

# February 2015

PRSRT STD  
U.S.  
POSTAGE  
PAID  
The Roundup  
ECRWSS  
Postal Customer

Welcome  
to the annual  
National Hard Spring  
Wheat Show  
5th Grade Bread Fair

# AG ROUNDUP

## Wheat Show Special Edition

**Farm & Ranch  
Monthly Magazine**

Published monthly by The Roundup  
PO Box 1207 • Sidney, MT 59270 • 1-800-749-3306



# 2015 National Hard Spring Wheat Show

By Brian Kaae  
Wheat Show President


The 2015 Wheat Show promises to be two days packed full of information and association to break the winter doldrums. As is tradition we will start the show with a hearty breakfast and a look at the weather as Leon Osborne, director of the regional weather center at UND, walks us through the possibilities and probabilities for the 2015 growing season. Updates on grain transportation plus the latest on fad diets and wheat gluten intolerance round out the morning leading us to lunch sponsored by the Williams County Farmers Union.

We all have a great understanding of our business, but how we articulate that understanding is very important so Katie Pinke, an ag advocate will help us understand how to communicate and maybe even stimulate the desire to communicate our business with the non-ag world. A farm program update, a session on how our wheat performs "in the oven" and wheat promotion issues lead us into the evening social where we can continue the informal education over supper and a beverage. The day isn't complete yet as Dr. Frayne Olson, NDSU crop economist discusses the grain market outlook followed by Joe Albrecht from the Minneapolis Grain exchange explaining how to maximize the market price of our crops.

Day two dawns with another breakfast and allows us time to visit across the table with our neighbor and stroll the trade show before we hear Dr. Mike Boehlje of Purdue University discuss what is probably one of the largest and most important inputs on our farms, labor.

We in Agriculture have a passion for our livelihood and the Williams County Ag Improvement Association has sponsored Mark J. Lindquist, "Passion! 8 Steps to Find Yours", as the Recognition Luncheon speaker. Hands-on demonstrations on Crop Salinity, New Durum Varieties, Scab Management and Marketing Strategies for High DON wheat will keep us from that after dinner lull and round out the show.

The Wheat Show Committee couldn't do it without the help of our sponsors, participants and you! So a big Thank You to all. Hope to see you there.



**A Continuation of 40 Years of Tuhy Angus Ranch Genetics!!**

*Striving To Create Relationships That Will Last Long After The Stock Trailer Gate Closes*

**First Year Breeding Guarantee**


**Raised Without Creep Feed**

**Selling 65 Performance Tested Yearling Angus Bulls**

**Saturday March 7, 2015**


Stockmen's Livestock West  
Dickinson, ND  
Sale Time: 1:00 P.M. MST  
Bull Viewing and Free Beef Lunch Prior to Sale

**PA Full Power 1208**



10 Sons Sell  
BW+4 WW+65 YW+122 MK+47

**Connealy Right Answer 746**



11 Sons Sell  
BW-2 WW+68 YW+122 MK+31

**Free Delivery Up To 300 Miles**

**Other AI Sires:**  
Kesslers Frontman R001  
Basin Excitement  
VDAR Really Windy 4097  
Connealy Final Product


**Herd Sires**  
DL Incentive S1  
Mytty Upward W321  
DL Consensus 222  
TA Frontman Y03

**Visit us online at: [www.JBAngus.com](http://www.JBAngus.com) to request a sale catalog**

**To view bulls or any of our cattle please give us a call anytime**

**Bobby & Erika Kubas**  
12545 31st St SW  
Belfield, ND 58622  
H: 701-677-4484  
C: 701-590-9814

This sale will be broadcast live on the internet.



**Auctioneer: Scott Weishaar**  
H: 701-872-5299  
C: 701-426-6826

**Jonathan & Stephanie Fieck**  
10570 16th St SW  
Manning, ND 58642  
H: 701-573-4658  
C: 701-590-3598





# SUNRISE EQUIPMENT

JOHN DEERE 2900 W. Holly, Sidney • 406-488-3112 • 1-800-967-3597 • www.sunriseequipment.biz

## Start The New Year With New Equipment!

### USED 4WD DRIVE TRACTORS

- 1981 JD 8640 (229 PTO HP), quad range trany, 3 hyds, PTO, 20.8x38 duals ..... \$16,500  
 1981 JD 8640 (229 PTO HP) Quad-range trany, 3 hyds, PTO, 3PT hitch, 14' Degelman dozer..... \$21,500

### USED MFWD & 2WD TRACTORS

- 2010 JD 8345R (345 eng hp), IVT trany, MFWD w/ suspension, 4 hyds, 3pt w/ quick hitch, PTO, 710/70r42 duals, front duals, no filter or fluid, 964 hrs ..... \$239,500  
 2000 JD 5510 (75 PTO HP) sync shuttle trany, MFWD, 3pt hitch, 18.4x30 singles..... \$21,500

### USED LOADER TRACTORS

- 2013 JD 6140R (140 eng HP), power quad trany, MFWD, 3pt hitch, 3 hyds, dual PTO, 480/80r38 singles, low hours, factory warranty, NEW JD H360 loader, 8' bucket, grapple, mechanical stick ..... \$129,000  
 2011 JD 5065E, (65 eng HP) MFWD, 3pt hitch, 1 hyd, PTO, only 103 hrs, new JD 553 load with 6' bucket ONLY 108 HRS!..... \$31,900  
 2008 JD 7330 (125 PTO HP) IVT trany, MFWD, 3 pt hitch, 3 hydraulics, dual PTO, 18.4X38 singles, JD 741 SL loader, 8' bucket, grapple, joystick..... \$109,500

### USED COMBINES

- 2011 JD 9670 STS, 520/85r38 duals, contour master, chopper, 26' unloading auger, Maurer GT extension.....CALL  
 2007 JD 9660 STS, 520/85r38 duals, contour

- master, chopper, maurer tank extentions.....CALL  
 2006 JD 9660STS, 520/85r38 duals .....CALL  
 2002 JD 9650 STS, 800/70r65 singles, chopper.... \$95,000  
 1999 JD 9610, 30.5x32 singles, chopper, chaff spreader, dual range cyl ..... \$69,500  
 used set of 18.4x38 duals for 9600, 9610 (60%rubber) ..... \$3,000  
 2012 635 FD draper platform.....CALL  
 2010 JD 630R platform, pickup reel.....CALL  
 2008 JD 635F flex platform .....CALL  
 1997 JD 930F flex platform ..... \$9,950  
 1997 JD 930F flex platform w/ CWS air real, header trailer ..... \$14,500  
 2001 MacDon 962 draper platform w/ pickup reel... \$19,500  
 1998 MacDon 962 draper platform w/ pickup reel ..... \$17,500  
 1993 MacDon 960D platform.....CALL

### USED HAYING EQUIPMENT

0% Financing for up to 5 years on all Balers O.A.C

- 2004 JD 4895 windrower, 18' platform, urethane conditioner .....\$52,500  
 2000 JD 955 rotary mower conditioner, 14'6".....\$11,900  
 2014 JD 569 round baler. loaded, like new...\$42,500  
 (2) 2011 JD 568 Round Balers, loaded. H241 &H242 ..... \$32,500 ea  
 2011 JD 568 round baler, loaded, net wrap...\$36,500  
 (2) 2009 JD 568 Round Baler, loaded. H176 & H206 ..... \$34,500

- 2007 JD 568 round baler, mega wide pickup, net wrap ..... \$19,500  
 2007 JD 568 Round Baler. Loaded except for kicker bar. H277..... \$28,500  
 2005 JD 567 Round Baler w/ net wrap, mega wide. H077 ..... \$16,900  
 1994 JD 535 Round Baler. H202 ..... \$8,500  
 1998 JD 566 Round baler. mega-tooth pickup ... \$9,250  
 3970 Forage Harvester ..... \$3,500

### USED BEET EQUIPMENT

- 2004 Amity 6 row beet harvester, steerable, row finder ..... \$33,500  
 WIC 9 row defoliator, steerable, knife scalper ... \$6,500  
 Artsway 786A defoliator, 6 row, steerable .....CALL  
 2005 Amity 6 row defoliator, steerable ..... \$11,500

### USED MISCELLANEOUS

- 746 loader mounts for 77-7920..... \$500  
 840 Loader mounts for 8000 series..... \$500  
 Brandt 4000EX grain vace ..... \$3,500  
 Brandt 5000EX grain vac ..... \$13,500  
 2013 Brandt 10x60 swing away auger, like new..... \$10,900  
 2006 Brandt 10x70 swing away auger with pit express drive over hopper ..... \$10,900  
 8x60 Sakundiak auger with engine ..... \$6,500  
 2011 JD XUV 825l gator, 4001 miles with roof and windshield..... \$8,950  
 2011 JD XUV 850i gator, 4282 miles ..... \$7,950  
 2003 Ford F150, 4.6L, V8, 4wd, auto, reg cab, long Diamond 72" & 62" mowers ..... \$2,500

# Brandt

Trust Brandt for industry-leading augers that just won't stop!

## AUGER & GRAIN VAC SALE!



# Dynamic Models of the Climate Prediction Center

Presented by Leon Osborne, Jr.

By Tie Shank

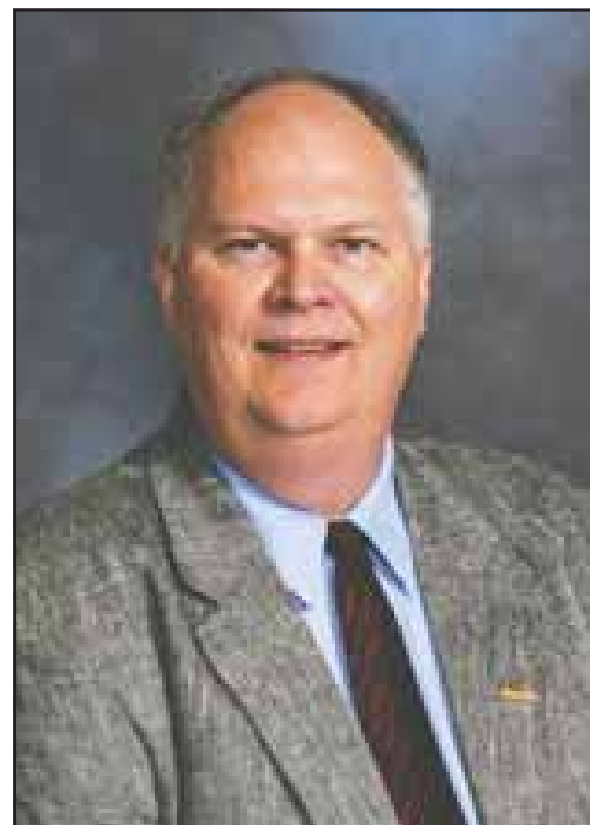
Join University of North Dakota's, Leon Osborne, Jr., Director of Regional Weather Information Center, on Tuesday, February 3rd as he kicks off the 2015 National Hard Spring Wheat Show.



Osborne is scheduled to speak during the breakfast meeting of the Wheat Show on

Tuesday, February 3rd. He is a nationally recognized speaker for his ability to predict long-term weather patterns and has been asked to share his outlook for the 2015 growing season.

Professor Leon Osborne has been on the faculty of the University of North Dakota since 1979. He currently is a Chester Fritz Distinguished Professor of Atmospheric Sciences, Director of the Regional Weather Information Center and the Surface Transportation Weather Research Center. Osborne received his M.S. in Meteorology from the University of Oklahoma and his B.S. in Physics from Utah State University. His research efforts include atmospheric data assimilation and the applications of mesoscale weather prediction modeling on surface related issues.



**Professor Leon Osborne, Jr - Director of Regional Weather Information Center, University of North Dakota**





# Low Rate Financing Available On All New Case IH Equipment



Skidsteers, Various  
attachments in stock



Farmall 110A w/loader



Puma 185



LB 434 Square Baler



Magnum 315



Thunder Creek 750 gal Fuel Trailer

## **USED TRACTORS**

1979 JD 4840, 3 pt, PTO ..... \$22,500  
2010 John Deere 3520 compact tractor, mfd,  
loader, misc attachments, 230 hrs .. 24,900  
2008 CaseIH Steiger 480, 1480 Hrs,  
Cummins engine, 710 radials, like  
new ..... \$179,000

## **USED MISCELLANEOUS**

Farmhand 25' mulcher ..... \$11,500  
Grasshopper 729, liquid cooled, 61' Power  
Fold deck, 1320 hours ..... \$8,900

## **USED SEEDING & SPRAYING**

Concord 4710 Drill, 3000 tow behind cart,  
hydraulic drive ..... \$30,000  
2005 Brandt 2SB4000, suspended boom, 90',  
1500 gal. tank ..... \$25,000

Monosem 6 row, 24" planter ..... CALL

## **USED HARVEST EQUIPMENT**

2005 2042 35' draper head ..... \$32,000  
MacDon 960 35' draper head, transport,

CIH adapter ..... \$10,000

## **USED HAYING EQUIPMENT**

2002 CaseIH LBX331 Square Baler ... \$29,000  
2008 CaseIH RB564 round baler, 8700 bales,  
mesh wrap, wide pickup, endless belts,  
hydraulic pickup lift, central lube ... \$26,500  
2006 RBX563 Round Baler, wide pickup,  
mesh wrap, endless belts, 8,000 bales, good  
cond. .... \$26,000  
CIH RBX 563 baler, mesh, wide pickup... \$25,000  
2003 CaseIH RBX562, MeshWrap,  
Like New ..... \$24,500  
1999 CaseIH RS561 ..... \$12,500  
1995 CaseIH 8465 ..... \$8,995  
1994 CaseIH 8480 Softcore ..... \$6,995  
1990 Hesston 560 Round Baler ..... \$5,500

## **USED COMBINES**

2006 2388, 2103 engine hours/1656 sep.  
hours, chopper consigned ..... \$115,000  
1999 CaseIH 2388, 2580eng/2071 Sep Hrs,  
very nice condition ..... Just Traded

Case IH 6088, 970 Hrs, duals ..... \$185,000

Case IH 2042 35' draper, transport ... Just Traded

## **USED BALE PROCESSORS**

Haybuster 2650, hydraulic chute kit, good  
condition ..... \$12,500  
2008 Vermeer Processor, BP8000 ... \$10,500

## **USED SKIDSTEER LOADERS**

2003 Case 75XT, 2400 Hrs ..... \$15,500

2002 Case 90XT, 2045 Hrs ..... 16,500

2012 Case TR270, tracks, cab, air, heat, 560  
Hrs ..... \$34,900

2013 Case TR270, tracks, cab, air,  
heat ..... Just Traded

Bobcat 773, Cab ..... Just Traded

Bobcat 331 Mini Excavator ..... \$20,000

# TRI-COUNTY IMPLEMENT

Sidney, MT • 2429 W. Holly • 406-488-4400 • 1-800-624-6540

Visit our web site at [tri-cnty.com](http://tri-cnty.com)

FINANCING PROVIDED BY  
**CNH CAPITAL**  
LENDING | LEASING | CREDIT CARDS | INSURANCE

**CASE IH**  
AGRICULTURE

© 2007 CNH America LLC. All rights reserved. Case IH is a registered trademark of  
CNH America LLC. CNH Capital is a trademark of CNH America LLC. [www.caseih.com](http://www.caseih.com)

## HANDLES HAY & SILAGE BALES EVEN IF THEY'RE KO'D.



"GOLDENBOY"  
AKA: THE 2650 Balebuster

2650 BALEBUSTER

- Save 30% of your hay and straw
- Shredder chamber handles bales in any condition
- Right hand discharge

- Self loading two bale processor
- One man operation
- Great for bedding or erosion control

**HAYBUSTER**  
DURATECH INDUSTRIES

# New Direction For Agriculture

Presented By Dr. Mike Boehlje

By Tie Shank

Join Dr. Mike Boehlje, on Wednesday, February 4th at 9:00 am for his presentation on 'New Directions for Agriculture.'

Dr. Boehlje, a Distinguished Professor of Agricultural Economics and Agricultural Business at Purdue University conducts research and teaches in the area of farm and agribusiness management and finance. His research interests include alternative systems of coordination of the food and industrial product chain, innovation and risk and uncertainty.

Professor Boehlje teaches a graduate/undergraduate course in agricultural finance

and a graduate course in economics of strategy in the MS/ MBA program. He teaches in the executive development programs of the Center for Food and Agricultural Business, as well as in schools and workshops for farmers, lenders and agribusiness leaders on finance/management/strategy topics.

Dr. Boehlje has received multiple awards and honors throughout his career and has numerous publications. He is a Fellow of the American Agricultural Economics Association and of the International Food and Agribusiness Management Association. He is also involved in applied research and Extension education programs on critical risk/finance/strategy issues facing farmers as part of the Center for Commercial Agriculture.

Dr. Boehlje's presentation will cover the following: The current business climate for agriculture, Will we have a bust or soft landing, What are the long term prospects for the industry, What will happen to land values, How do I position my business to handle the downturn, Strategies for success in turbulent times.



**Dr. Mike Boehlje, Distinguished Professor of Department of Agricultural Economics and Agricultural Business at Purdue University.**



**Wheat Show attendees participate in a small group hands-on session.**



# Leland Red Angus ...



**BROWN JYJ REDEMPTION Y1334 (#1441805)**

Calving Ease, Maternal and Carcass  
Top 1% CED, 2% HB and 11% GM



**PARINGA IRON ORE E27 (#1562199)**

Growth, Carcass and Maternal  
Top 4% Marb, 8% REA and 22% GM



**LELAND FIRE POWER Y50 (#1452038)**

Growth and Carcass –  
Top 11% WW  
and 15% YW,  
8% GM, 9% MA,  
12% REA

Growth, Carcass  
and Maternal  
Top 15% GM, 2% WW,  
2% YW, 2% CW  
and great phenotype



**LSF PROFESSIONAL 0418X (#1382579)**



**LELAND RIGHT GUN 292X (#1380789)**

Growth and  
Maternal  
Beautiful  
daughters –  
exceptional  
udders and  
fleshing

**All sale bulls will be  
50K tested!**

**Sell in Catalog Order**

**Free Delivery**

**First 700 Miles**

**Cattle Guaranteed**

**Free Sale Day Lunch**

**Catalog, videos and lot photos  
online mid-February  
[www.lelandredangus.com](http://www.lelandredangus.com)**

**View & bid online:**

**DVAuction** Broadcasting  
Real-time Auctions



# R Leland

**RED ANGUS RANCH**

Melvin & Luella Leland • (701) 565-2347  
Todd & Carla Leland • (701) 565-2361  
192 Hwy 16 N • Sidney, MT 59270 •  
[lelandra@restel.net](mailto:lelandra@restel.net) • [www.lelandredangus.com](http://www.lelandredangus.com)

*Annual Production Sale*

**Friday, March 13, 2015**

**1 p.m. MDT • At the Ranch**

41 mi. N of Beach, ND, or 34 mi. SE of Sidney, MT

**175 Bulls**

**50 Heifers**

**Including 18-month-old bulls  
from Koester Red Angus**



# Wheat Gluten Intolerance and Food Fads

Presented by Julie Garden-Robinson, Ph.D., R.D., L.R.D.

By Tie Shank

An article recently written by Professor and Food and Nutrition Specialist Julie Garden-Robinson claims that, according to the Celiac Disease Foundation, an estimated 1 percent of the population has celiac disease. They must avoid gluten in all foods, as well as other

gluten-containing items they might swallow such as toothpaste, mouthwash or glue on an envelope.

People who are female, Caucasian and of European descent appear to have a greater risk of ce-

liac disease. People with celiac disease might experience one or more of 300 different symptoms including abdominal pain, bloating, diarrhea, damage to their intestines and skin rashes.

People who are gluten-sensitive have similar symptoms but do not have the damage to their intestines. Issues with gluten must be diagnosed through medical testing with qualified professionals, not on your own.

In August 2014, the Food and Drug Administration released its final rule on gluten-free labeling. The labeling is voluntary and may appear on any food product with less than 20 parts per million of gluten. Wheat, rye, barley and crossbreeds are not gluten free, so any foods containing these grains cannot be labeled gluten free.

Join Julie on Tuesday, February 3rd at 10:00 am, for an in depth discussion on what gluten is, its function in foods, where gluten is found and the medical condition, celiac disease, which requires people to avoid it.



Julie Garden-Robinson, Ph.D., R.D., L.R.D.,  
Professor and Food and Nutrition Specialist



The Wheat Show Photo Contest



**We produce  
bulls  
that will keep  
you in the  
cow business.**



GDAR Game Day 449



Sitz Wisdom 481T



Apex Windy 078



AAR Leupold 0578



Sitz Dash 10277



VDAR Really Windy 4097



GDAR Wisdom 2244



GDAR CJD Justice 1717



GDAR Leupold 298



**Weaned Calf Value**

**\$W**

Weaned calf value (\$W) calculates the costs and revenues associated with birth weight, weaning weight, maternal milk, and mature cow size, effectively summarizing four of the most economically important traits that impact profitability on cow-calf operations\*.

The average \$W of the 2015 GDAR bulls on test ranks in the top 15% for the breed, making GDAR bulls the perfect fit for profit minded producers.

Contact us today to see how a GDAR bull will impact your operation.

\*For more information about \$W visit [www.gdar-angus.com](http://www.gdar-angus.com)

**225 Bulls Sell  
March 26, 2015**

1:00 MDT at the ranch • Sidney, MT

34750 County Road 127  
Sidney, MT 59270

**Gartner ~ Denowh**

**ANGUS RANCH**

**[www.gdar-angus.com](http://www.gdar-angus.com)**

Mick Denowh  
406-798-3355

Paul Denowh  
406-798-3375

Chad Denowh  
406-798-3541



# Congratulations to the “Top Ten Growers” of 2014!



**Back Row (L-R):** Todd Steinley, Dean Steinley, Jeff Beiber, Tim Karst, Terry Cayko, James Asbeck, Harvey Asbeck, John Asbeck & Pat Asbeck. **Front Row (L-R):** Don Snideman, Rob Schilling, Tyler Schilling, Ty Hurley, Rodney Hurley, Tim Hurley, Brandon Johnson & Casey Johnson. **Not pictured:** John Hoffman.

## Planter Test Stand Days

February 24th & 25th

Sunrise Equipment in Sidney

8am - 5pm



**Sidney Sugars**  
INCORPORATED

### 282 Acres or More

Grower .....	Acres.....	TPA .....	Sugar%....	Quality Rating
DC Farms & T&J Farms .....	648 .....	36.4 .....	18.39 .....	32.94
Texas Red Enterprises.....	315 .....	35.6 .....	18.55 .....	32.81
Tim Karst .....	357 .....	32.1 .....	19.36.....	32.19
6J Farms .....	285 .....	31.9.....	19.39 .....	32.14
Asbecks.....	416 .....	34.1 .....	18.44 .....	32.09

### 50 - 282 Acres

Grower .....	Acres.....	TPA .....	Sugar%....	Quality Rating
Don & Doreen Snideman.....	135 .....	36.9.....	18.03 .....	32.79
Rob Schilling .....	144 .....	37.1 .....	17.83 .....	32.65
Rod Hurley & TNT Farms.....	122 .....	33.6.....	19.12 .....	32.56
John Hoffman.....	57 .....	32.3.....	19.52 .....	32.44
3G Johnsons Farms.....	265 .....	33.1 .....	19.11 .....	32.36



# Farmers & Ranchers,



***American State Bank & Trust Company's Professional Ag-Lending Staff Is Ready To Help You On Your Road To Success!***

**American State Bank & Trust is proud to be a Major Sponsor of the 62<sup>nd</sup> Annual Hard Spring Wheat Show in Williston!**



Kurt Nielson



Dusty Berwick



Bob Rude



Aaron Granley



Banking, the American State Way.

223 Main Williston, ND • 701-774-4110

[www.asbt.com](http://www.asbt.com)

MEMBER FDIC



# Welcome To The Wheat Show!



**We're Your Business & Truck HEADQUARTERS!**

**SEE OUR FLEET & COMMERCIAL SPECIALISTS: KELLY & DUSTY**



MURPHY  
MOTORS  
INC.  
**28**  
YEARS  
1987-2014

**Murphy**  
MOTORS

Hours: Mon. 8am-8pm; Tues.-Fri. 8am-6pm; Sat. 9am-5pm  
1801 2nd Ave W. Williston, ND | 1-800-888-2927 • 701-577-2927





# Schedule of Events

NATIONAL HARD SPRING  
NDSU's Best of the Best  
WHEAT SHOW



Join Us At The Grand Williston Hotel On February 2<sup>nd</sup> – 4<sup>th</sup>  
Tuesday, February 3

7:30 .....	.....	Aaron Krauter, State Executive Director, ND Farm Service Agency Dwight Aakre, NDSU Farm Management Economist
.....	Welcome: Brian Kaae, President Welcome: Mayor Howard Klug Breakfast - \$10.00	3:00 .....
Dynamic Models of the Climate Prediction Center – Leon Osborne, Jr., Director of Regional Weather information Center, University of North Dakota	3:30 .....	Break
9:00 .....	Grain Transportation – Is Relief Looming? – Dan Wogsland, Executive Director, North Dakota Grain Growers Association	How Protein Quantities & Qualities Affect Bread Baking – Dr. Senay Simsek, NDSU Endowed Associate Professor, Wheat Quality Research
10:00 .....	Wheat Gluten Intolerance & Food Fads - Julie Garden-Robinson, NDSU Extension Food & Nutrition Specialist	4:20 .....
10:45 .....	Promoting Wheat in an Anti-Gluten World - Erica Olson, Marketing Specialist, North Dakota Wheat Commission	Reports From Commodity Leadership: Montana Wheat & Barley Committee–Buzz Mattelin, North Dakota Wheat Commission–Dustin Johnstrud, North Dakota Grain Growers–Dan Wogsland, North Dakota Barley Council–Mark Seastrand, United States Durum Growers Association–Russell Doe
12:00 .....	Lunch \$10	5:30 .....
Finding Your Voice At Americas Farm Table - Speaker Katie Pinke, Leader of Ad Farm	6:30 .....	Social Dinner \$10
2:00 .....	Farm Program Update	Grain Market Outlook Frayne Olson-NDSU Crop Economist & Marketing Specialist Joe Albrecht-Minneapolis Grain Exchange

Bigger Store, Same Friendly People, Same Great Prices



<b>Deli</b>	<b>Bakery</b>	<b>Meat</b>	<b>Floral</b>	<b>Produce</b>
433-6328	433-2867	433-1902	433-7673	433-5181

The Shops At Fox Run | 6am - 10pm Daily | [www.reynoldsmarket.com](http://www.reynoldsmarket.com)



701.572.6389  
inkspotnd@gmail.com  
404 West 2nd Street  
Williston, ND 58801

<b>Envelopes</b>	<b>Blue Prints</b>	<b>Rubber Stamps</b>	<b>Carbonless Forms</b>
<b>Business Cards</b>	<b>Banners</b>	<b>Stickers</b>	<b>Letterhead</b>
<b>Calendars</b>	<b>Note Pads</b>	<b>Holiday Cards</b>	<b>Brochures</b>



1802 13th Ave W • Williston, ND | 701-774-0055 or 1-800-264-1095 FCS of ND is an equal opportunity provider & employer

For all your  
application & crop  
protection  
chemical needs!



Kent Taylor, Owner • Watford City, ND  
701-444-3772 • [www.taylorag.com](http://www.taylorag.com) | Licensed in ND & MT



WILLISTON AREA  
CHAMBER OF COMMERCE  
CONNECT • ENGAGE • GROW • LEAD

“Raise The Bar”

SERVING AND ADVOCATING FOR WILLISTON  
AREA BUSINESSES SINCE 1907

[www.willistonchamber.com](http://www.willistonchamber.com)



# Schedule of Events

**NATIONAL HARD SPRING** 62<sup>nd</sup>  
**NDSU's Best of the Best**  
**WHEAT SHOW**



**Join Us At The Grand Williston Hotel On February 2<sup>nd</sup> – 4<sup>th</sup>**  
**Wednesday, February 4**

**7:30** ..... Breakfast - \$10.00

**Speaker-H2A Agriculture Foreign Worker Program**—Kevin Opp, Operations Manager & CEO  
Employment USA

**9:00** ..... **New Directions For Agriculture** – Dr. Mike Boehlje, Distinguished Professor, Department of

Agricultural Economics & Agricultural Business, Purdue University

- The Current Business Climate For Agriculture
- Will We Have A Bust Or Soft Landing
- What Are The Long Term Prospects For The Industry
- What Will Happen To Land Values
- How Do I Position My Business To Handle The Downturn
- Strategies For Success In Turbulent Times

**12:15** ..... **Recognition Lunch \$10**– Speaker Mark J. Lindquist, “Passion! 8 Steps To Find Yours!”

Mark is a nationally recognized motivational speaker & world-touring entertainer. He has appeared in AVC's Lost, CBS's Hawaii Five-O & The Universal Studios Movie “Battleship”

**2:15** ..... **Hands On Presentation** – Group Leaders: Keith Brown, Sam Arnson, Jim Saricka, Wade

Fischer, Chris Vallevik

Market Strategies For High Vomitoxin Durum Wheat—Daryn Edwards, Manager, Ray Farmers Union  
Elevator

Crop & Soil Salinity Demonstration—Chris Augustin, NDSU Area Extension Specialist

New Durum Varieties—Shana Pederson, NDSU Area Extension Specialist

How To Manage The Effects Of Scab & Other Durum Wheat Diseases—Venkat Chapera, Area  
Extension Crop Protection Specialist

AFS & Telematics-Future Tech For Farmers—Corrie Nygaard, Border Plains Equipment

**4:00** ..... Adjoin until Next Year's Wheat Show

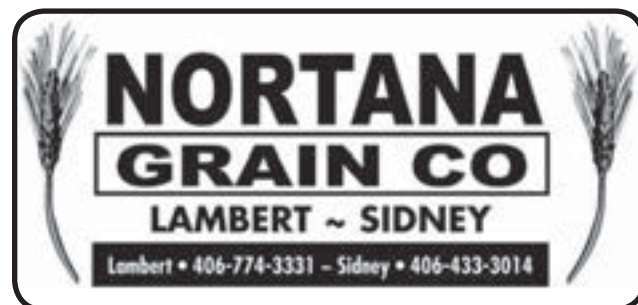


**Experience the Eagle Country Difference!**

**215 E. Main**  
**Sidney, MT**  
**406-433-1810**  
**800-482-1810**



**Hours:**  
**Mon-Fri:**  
**8am - 5pm**  
**Sat: 9am - 1pm**





# 2015 Wheat Show Hi-Lites

The 62nd Annual National Hard Spring Wheat Show will focus on a variety of issues but much emphasis will be given to strategies of preventing Fusarium head blight (SCAB) and marketing this year's crops which are heavily infested with scab and vomitoxin. These issues will be discussed by Dr. Senay Simsek of the Northern Crops Institute, NDSU Crop Quality Specialist and Grain Marketers.

Another hot issue on the agenda is grain transportation. Dan Wogsland, Executive Director of the Northern Grain Growers Association will give us the latest details on efforts to bring balance to get grains to milling and export destinations.

Consumer issues including gluten intolerance and food fads are at the top of this year's agenda along with new durum varieties and crop salinity tolerances.

The keynote speaker is Dr. Mike Boehlje of Purdue University. One of his presentations will focus on a possible cyclical downturn of agriculture income. He is concerned about the fall or a possible decline in exports due to the decline of economic growth in China and India. He also feels farmers can expect interest rates to

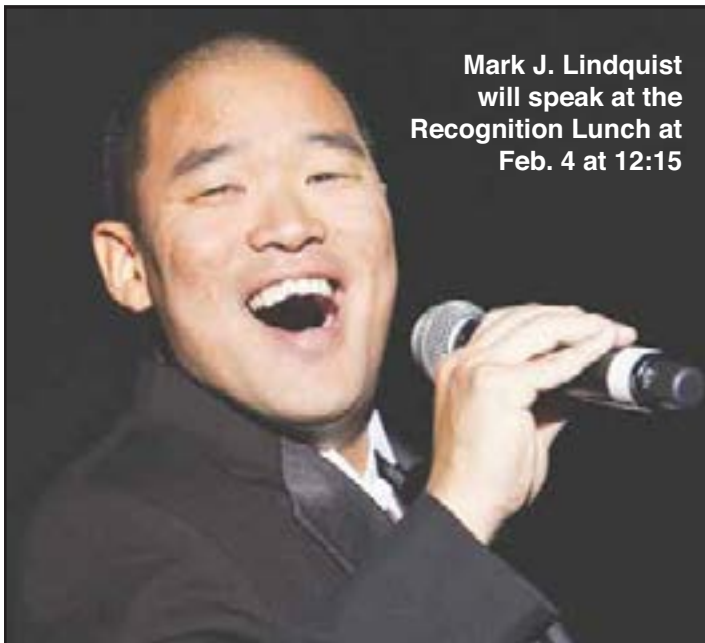
rise steadily during the balance of the decade. The U.S. farmers export products equal to approximately 25% of their income.

The world has put more land under the plow and he feels this and other factors could cause agricultural land values to drop as much as 15%.

Of course during his three-hour presentation Dr. Boehlje will present other information that is for certain to influence our production decisions in the near future.

During the Williams County Farmers Union luncheon attendees will learn how they can easily be advocates of the business of farming. Also, the Williams County Farmers Union has secured a great speaker who will talk, sing, and make us laugh and cry. This presentation by Mark J. Lindquist is titled "Passion! 8 Steps to Find Yours".

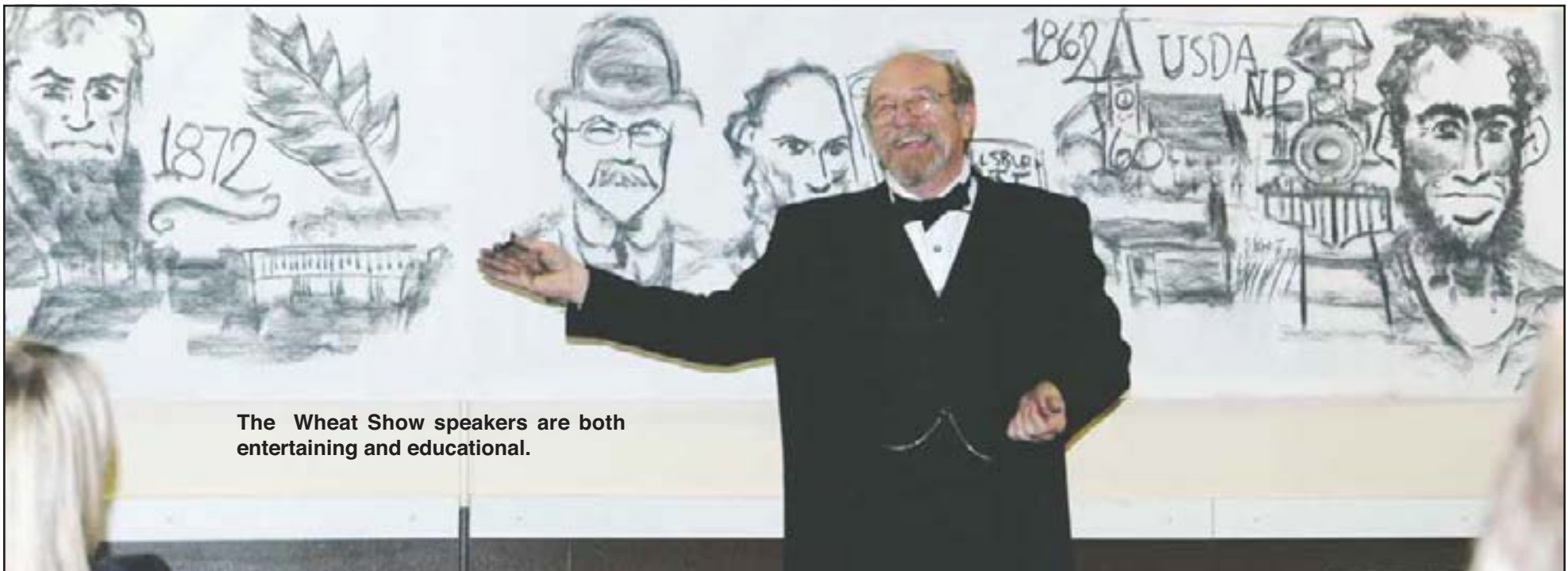
The "Trade Show", photo contest, and Bread Fair for area 5th grade students will continue as in the past.



Mark J. Lindquist  
will speak at the  
Recognition Lunch at  
Feb. 4 at 12:15



The Wheat Show  
Bread Fair.



The Wheat Show speakers are both  
entertaining and educational.





## Visiting Physicians

### • February 2015 •

**4 - Dr. Muhamad Sethi**  
- Endocrinology & Lipidology

**- Erica Riordan**  
- Certified Nurse Midwife

**5 - Dr. Mark Noel**  
- ENT  
- Audiology Services

**6 - Dr. Ravindra Joshi**  
- Orthopedist

**9 - Dr. Aaron Albers**  
- Podiatrist

**10 - Dr. Erdal Diri**  
- Rheumatologist

**12 - Dr. Samir Turk**  
- Cardiologist

**18 - Kerena Crowe**  
- Certified Nurse Midwife

**19 - Dr. Mark Noel**  
- ENT

**23 - Dr. Aaron Albers**  
- Podiatrist

**24 - Dr. Erdal Diri**  
- Rheumatologist

**26 - Pacemaker**

*To make an appointment with any of these specialists, call 701-572-7711.*

1321 W. Dakota Parkway  
Williston, ND  
701-572-7711  
1-800-735-4940

**Re-Inventing  
Health**

## GIBBS ANGUS RANCH STORTZ ANGUS RANCH

### “PERFORMANCE ON THE PRAIRIE”

**Wednesday, February 25**

1pm • Glendive Livestock Exchange • Glendive, MT

**Selling 115 Yearling  
Angus Bulls**

**AI Sires Featured:**

*Long Distance • AAR Ten X • Long Haul • Apex Windy 078*

*WMR Timeless • Really Windy • Rainmaker*

**\*Will feed until April 1st\* | Free delivery to central points**

**\*Will be fertility tested\***



**Many Bulls Suitable  
For Heifers!**



**Gibbs Angus Ranch**

*Tim & Laurie Gibbs*

406-486-5608 or 406-939-1084 | 738 Road 130 Fallon, MT 59326

**Stortz Angus Ranch**

*Ted & Tarena Stortz*

406-584-7585 | 757 Road 452 Lindsay MT, 59339



# Montana Stockgrowers Accepting Applications for Young Cattlemen's Conference

Don't miss this opportunity to learn more about the structure of the U.S. cattle industry and gain insight on the legislative process that guides our business. Montana Stockgrowers Association's Research and Education Endowment Foundation will send one Montana delegate on this year's Young Cattlemen's Conference (YCC), held May 27 – June 5, 2015. Applications, due March 1, are available at [mtbeef.org](http://mtbeef.org).

The Young Cattlemen's Conference is an opportunity for cattlemen and cattlewomen between the ages of 25 and 50 to visit segments of the beef industry in other parts of our nation with young ranchers from other states. Facilitated by the National Cattlemen's Beef Association (NCBA), participants will travel with national attendees to Denver, Chicago and Washington D.C., visiting JBS Five Rivers facilities, Chicago Board of Trade and Capitol Hill.

Last year's Montana delegate was Ryan Hughes from Dillon. "We are all dedicated to the same goal of being the best and providing the best product, whether we sell beef, promote beef, package beef, and feed or raise beef," said Hughes, following the 2014 YCC trip. "There wasn't one person that I met on the trip, that doesn't love and have a huge passion for their role in our industry."

The primary objective is to develop leadership qualities in young cattlemen and expose them to all aspects of the beef industry. The tour helps these young leaders understand all areas of our industry ranging from industry structure to issues management, from production research to marketing.

The MSGA Research and Education Endowment Foundation will ensure funding for one participant for the full cost of the tour along with travel expenses. Remaining expenses are the responsibility of the participant, who will be chosen from those who apply. Participants must be a member of Montana Stockgrowers Association and National Cattlemen's Beef Association.

To learn more about the Young Cattlemen's Conference and to complete an electronic application, visit the MSGA website, [mtbeef.org/young-cattlemens-conference](http://mtbeef.org/young-cattlemens-conference). In addition to the form questions, two letters of reference are required to complete the application process. All applications must be complete and postmarked or received by March 1, 2015. Please mail or fax to MSGA/REEF at the following address: Montana Stockgrowers Association | Attn: REEF YCC, 420 N. California St. Helena, MT 59601.

If you have any questions about the application process or YCC trip, please call the MSGA Office at (406) 442-3420 or e-mail [jesse@mtbeef.org](mailto:jesse@mtbeef.org).

The Research and Education Endowment Foundation (REEF) of the Montana Stockgrowers Association (MSGA) is a 501(c)3 nonprofit organization established to provide resources for education and research that supports the Montana Stockgrowers Association in enhancing the Montana ranching community, as excellent environmental stewards, in their production of healthy beef for the world.

## Lower Yellowstone Wool Pool Annual Meeting Feb. 9th

**By Tim Fine - MSU Extension Agent**

The Lower Yellowstone Wool Pool has been a great asset to area producers for many years. In case you are not familiar with the reason for the existence of a pool, its sole purpose is to gather wool from area sheep producers in one central location, grade said wool, and then combine that wool with other producers' wool to make a larger shipment. By combining these graded pools of wool together, instead of one person trying to market their product, there is now a greater amount of wool being marketed at one time. This process of combining and grading the wool will increase the amount of product that is marketed at one time, therefore ensuring a more consistent product and an increase in the price paid for the product.

The Lower Yellowstone Wool Pool was formed in the spring of 1987 for this reason. A group of local producers organized to aid in creating greater value for the wool they produce. Since the pool's inception, many tons of wool have been gathered, graded, bagged, and combined with wool from pools across the state of Montana to be marketed.

If you have sheep and are interested in learning more about the Lower Yellowstone Wool Pool, you are encouraged to join us for our annual meeting and dinner on Monday, February 9th at 6:00 PM (MST) at the Richland County Extension Office. The Lower Yellowstone Wool Pool annual meeting will begin with a lamb dinner at 6:00 and business meeting immediately following. If you cannot make it to the meeting but are still interested in becoming part of the pool, you are welcome to contact Tim Fine at the Richland County Extension Office at 406-433-1206 or Wade VanEvery, Lower Yellowstone Wool Pool president.

## Winter Seminars Scheduled for Sugar Beet Growers

**Submitted by NDSU Agriculture Communication**

Seminars for sugar beet growers are scheduled during February in Grafton, Grand Forks, Fargo and Wahpeton.

The seminars are sponsored by the North Dakota State University Extension Service and University of Minnesota Extension.

Topics include:

Subsurface water management

Integrated management of aphanomyces

Challenges and solutions for sugar beet insect pests

Weed management

Strategies to manage sugar beet diseases

Using the NDSU Extension pest management app

The seminars at each location will begin at 9 a.m. Dates and locations are:

Feb. 5 – Grafton Parish Center

Feb. 10 – Alerus Center in Grand Forks

Feb. 11 – Holiday Inn in Fargo

Feb. 12 – Eagles Club in Wahpeton

Continuing education credits will be available for those attending. The seminars are free and no registration is required.

For more information, contact NDSU county agents Brad Brummond (Walsh County) at (701) 284-6248 or [bradley.brummond@ndsu.edu](mailto:bradley.brummond@ndsu.edu); Michael Knudson (Grand Forks County) at (701) 780-8229 or [michael.d.knudson@ndsu.edu](mailto:michael.d.knudson@ndsu.edu); John Kringler (Cass County) at (701) 241-5711 or [john.kringler@ndsu.edu](mailto:john.kringler@ndsu.edu); Brock Shouldis (Richland County) at (701) 642-7793 or [brock.shouldis@ndsu.edu](mailto:brock.shouldis@ndsu.edu).

Also available to answer questions is Mohamed Khan, NDSU Extension sugar beet specialist, at (701) 231-8596 or [mohamed.khan@ndsu.edu](mailto:mohamed.khan@ndsu.edu).



# BEST *value in the* BADLANDS

*Please join us for our sale in  
Watford City!*

Outlaws Convention Center

Lunch starting at noon

Video auction sale at 2 p.m. CST

Cattle displayed at Watford City Scale Assoc.

*Production Sale - March 10, 2015*

*Offering* 90 Bulls  
20 Heifers

*Sale features:*

- Many ET brothers
- Large groups of 1/2 brothers
- 10 Two-year-old bulls
- Backed by hard-working, blue-collar cows
- Outcross for most popular bloodlines
- Volume Discounts
- 1st Year Breeding Guarantee
- High-roughage ration
- Carcass ultrasounded/performance tested
- No creep feed



Angus & Quarter Horses

Pete & Vawnita Best WATFORD CITY ND

701-570-6959 bestangus@yahoo.com

www.bestangusandquarterhorses.com

Sale will be broadcast on

**DVAuction**  
Broadcasting Real-Time Auctions



With Grand Consignor

*Hall Stock Farm*

Zac Hall - 701-426-0285

BERTHOLD, ND

hallstockfarm@hotmail.com

www.hallstockfarm.com





## YOU KNOW THE DIFFERENCE A DAY MAKES. SO DOES YOUR YIELD.

Product needs to be applied at the right agronomic moment to maximize yield potential. Case IH Patriot® series sprayers widen tight operating windows with a cab-forward, rear-engine design that balances weight distribution, getting you into the field earlier with less soil compaction. AIM Command® spray system provides a constant rate at a constant pressure over a wide speed range for consistent chemical coverage over the entire field, so you get the most out of every tank of product. New Case IH Patriot 3240 and 3340 sprayers feature Tier 4 B/Final Efficient Power technology with a patented SCR-only solution – improving fuel efficiency and reducing maintenance intervals. See your Case IH dealer or visit us online at [caseih.com](http://caseih.com).



**SEE US TODAY.**

**WEST PLAINS INC**  
**Beach, Bowman, Dickinson, & Hettinger, ND**  
**BORDER PLAINS EQUIPMENT**  
**Williston, Stanley, & Glasgow, MT**  
[www.plainsag.com](http://www.plainsag.com)



Case IH is a trademark registered in the United States and many other countries, owned by or licensed to CNH Industrial N.V., its subsidiaries or affiliates.

# 37th Annual GATE Feb. 13th

**By Kathy McLane**

The 37th annual GATE, the Glendive Agri-Trade Expo, is heading our way February 13th and 14th, 2015. Vendors displaying at this Glendive tradeshow are from across Montana and many states including North Dakota, South Dakota, Wyoming, Nebraska, Minnesota, Idaho and even Canada. The tradeshow will again be hosted at the EPEC building located at 313 S Merrill Street, Glendive, MT.

GATE provides an excellent venue to escape the tedium of winter doldrums and cabin fever with the opportunity to enjoy the company of our great folks in agricultural community & spending time with ag businesses and suppliers. New technologies and innovations keep the ag industry viable and growing.

As an added incentive in 2015, attend the Rangeland and Cropland weed seminars at GATE from 1-5 on Friday, February 13th. These seminars will qualify attendees for 3 points.

GATE raffle prizes this year are:

Grand Prize: Weatherby Vanguard Deluxe 270 Winchester with a beautiful Woodstock and a 4-16X50 Scope.

1st Prize: Ruger 77/17 Hornet with Heavy Duty laminated stock and Nikon 3-9X40 Scope.

2nd Prize: Remington 870 Wingmaster 12 gauge shotgun with a 28" barrel and high gloss Woodstock.

Glendive motels are offering room blocks especially for GATE so pack your sweetheart and attend. Speaker for the Saturday evening banquet is Northern Ag Net's Rocky Erickson. His humorous entertainment style will be enjoyed by all. Following the banquet, dance to one of the country's best dance bands, Sam Platt & the Kootenai Three.

Please contact any GATE member or contact 406-987-3777 with any questions or for more information. There are still vendor opportunities available but they will fill quickly. Join us for an annual event that is celebrating 37 years!



## Winter supplies for your any need!

Come see us in the **Ag/Hardware & Energy Division...**

We have **shovels, gloves, boots, ice melt, heaters, kerosene and hand warmers** to keep you warm this winter season!

Also, keep your family cozy with **propane** from United Prairie Cooperative!



We now offer  
**Honda Generators!**  
1,000 to 10,000 watt models



**HOURS:** Monday - Saturday: 6:00am - 7:00pm, Sundays: 8:00am - 5:00pm

Located at 241 West Main Street in New Town **888.627.3949** | [www.unitedprairie.coop](http://www.unitedprairie.coop)

*Serving You in Western North Dakota Since 1929*

## Safflower Technologies International

### 2015 AMERICAN FARMER PRODUCTION PARTNERSHIPS



**FREE** Henry Engraved American Farmer Tribute Rifle  
with Qualifying Seed Purchase!!

Program Includes Premium Contracts, Seed Discounts,  
Finance Options and More... Call for Details!

### Top of the Line Seed Genetics

**NEW SPRING WHEATS** from Limagrain, **DURUM**  
**CORN & SOYBEANS & SUNFLOWERS** from Nuseed & Legend,  
**NEW High Yielding SAFFLOWERS, PULSE SEEDS & MORE...**

**NOW SELLING**



**GRAIN BINS**

Call STI (701) 844-4797

Buying Safflower, Sunflowers & Pulses

# We Are Proud To Be A Major Sponsor of the 62<sup>nd</sup> Annual National Hard Spring Wheat Show February 2nd – 4th

**See one of our Ag Lenders for your financial needs.**

Real Estate • Operating • Equipment • Livestock • Irrigation



**Life. Make the Most Of It**

**OFFICES IN WILLISTON, WATFORD CITY,  
ALEXANDER & KILLDEER**

[firstintlbank.com](http://firstintlbank.com)

19 4th St E • Williston, ND ..... 701-774-8321

1331 9th Ave NW • Williston, ND ..... 701-609-5800





You are invited to the Annual Meeting of the  
**Lower Yellowstone Irrigation  
Districts**  
**And The Board Of Control**

**Join Us At The  
Sidney Moose Lodge  
On Friday, Feb 13<sup>th</sup>  
Starting At Noon**

**Serving Roast Beef  
Slide Show Showing Current Projects  
There Will Be Door Prizes**

**Peterbilt**

**For All Your Heavy  
Truck/Trailer Parts  
& Service**



**Agriculture, Oilfield & MORE**

**ALLSTATE PETERBILT**  
13579 58th St. NW • Williston, ND • North of New Love's Truck Stop  
701-774-0225 • 1-888-894-3511

# PLANTING SEASON IS AROUND THE CORNER!

Get rolling with Western  
Cooperative Credit Union!

We offer ag services for your  
operating and machinery needs.



Western Cooperative  
CREDIT UNION

WILLISTON • DICKINSON  
HEBRON • BEACH  
GLEN ULLIN • RAY  
[WWW.WCCU.ORG](http://WWW.WCCU.ORG)



NCUA





# MFBF Members Glean Knowledge From AFBF Convention

Submitted by Rebecca Colnar - Montana Farm Bureau

Forty-nine Montana Farm Bureau members who traveled to San Diego for the American Farm Convention January 9-14 had the opportunity to participate in workshops, hear speakers at the General Session, listen to the Young Farmer and Rancher contests, and meet other agriculturalists from across the country.

The meeting kicked off with AFBF President Bob Stallman addressing the successes of Farm Bureau as well as the challenges. "Farmers and ranchers care deeply about our environment and are focused on continuous improvement. However, we cannot sustain the nation's food supply if excessive restrictions and regulatory costs make the business of farming and ranching economically unsustainable," Stallman told the group, indicating that Farm Bureau will continue to oppose the Waters of the U.S. rule that would regulate land and water. "Farm Bureau has your back."

Keynote speaker U.S. Navy Commander Rorke Denver spoke at the general session Monday morning, Denver connected his experiences in the military with farming and ranching, and provided insights on teamwork and courage when faced with pressure-filled situations. Relating to serving in leadership, whether it is in the military or in agriculture, the ability to stay calm and let your training take over is what Denver said is critical to performing when the stakes are highest.

"Calm is contagious. If you keep your head, you keep your head," Denver said, relating to staying calm when leading others on the battlefield. "Calm is being focused on the job at hand when you need to do it at its most intense moment."

There were many workshops to choose from on two days of the convention, ranging from Farm Bill decisions and a Crop Market Outlook to Food Safety and Compliance and several leadership workshops.

MFBF members felt the workshops proved educational.

"I attended workshops on the farm bill which explained the decision tools to make choices easier, along with Mike Taylor, deputy commissions, Food and Drug Administration, giving insight on the Food Safety Modernization Act," noted Ted McFarland, Billings area rancher. His wife, Lisa, who serves as president of the Yellowstone County Farm Bureau and District Chair of the MFB Women's Leadership Committee, attended some leadership workshops. "We had one session where we studied various board games everybody probably grew up playing, and saw how they related to leadership."

Joe Garrity, Cascade County Farm Bureau, found the workshops to be very informative and said he will take new leadership ideas back to the county. His wife, Julie Meyer, visited with many of the County Farm Bureau Ag Idea Exchange booths

at the trade show where she took photos and made notes about each one to bring up at their next county meeting. Meyer's son, Corey Roberts, was inspired by seeing how other young people are developing their Young Farmer and Rancher Committees in their counties, and took away good leadership ideas.

Former Yellowstone County President Allan Hanley said he especially enjoy fellowship with other farmers and ranchers. "There is such a connection between all of us, whether someone has a small vegetable farm in Rhode Island, big ranch in Florida or a dairy in California."

MFBF District 7 Director Tom DePuydt of Saco echoed Hanley's sentiments. "No matter who you visited with at the convention, you have something in common," DePuydt says. "I learned a lot in the workshops on precision agriculture and using the Unmanned Aerial Vehicles, as well as enjoyed a leadership workshop on saying "yes" and improving communication in our organization."

Cyndi Johnson who farms with her husband, Ken, near Conrad, enjoyed hearing about new technology available, as well attending the workshop led by Charlie Arnot, CEO, Center for Food Integrity, on sound science versus what consumers choose to believe. "He covered how to begin a conversation to acknowledge the concerns of the consumer, then talked about how you move forward to establish credibility. Arnot believes people do eventually learn to decipher good from poor information."

Bruce and Edie Wright, small grain farmers from Bozeman, enjoyed the new IdeaAg trade show, as well as seeing the San Diego area. "It's always good to see other parts of our country and find out what farmers are doing in the area."

**EVERY MEMBER HAS A VOICE.  
EVEN THE ONES WHO CAN'T YET SPEAK.**

As an electric co-op member, your household has a say in how the co-op is run.  
Which helps you care for an even bigger family – your community. Learn more about  
the power of your co-op membership at [TogetherWeSave.com](http://TogetherWeSave.com).

**LYREC**  
LOWER YELLOWSTONE  
RURAL ELECTRIC COOPERATIVE  
Your Yellowstone Energy Cooperative  
[TOGETHERWESAVE.COM](http://TOGETHERWESAVE.COM)





# Photo Contest Part of Wheat Show

**By Warren Froelich - NDSU Extension Agent, Williams County**

One of my very favorite parts of the Wheat Show has been the photo contest. I look at the photos as art seen through the eyes of other people. The photos are placed into four categories; a) landscape, b) people, c) equipment/buildings and d) animals. Any photo that does not fit into one of these four is put into the miscellaneous group.

The photos are also grouped by the experience of each exhibitor. The "Advanced" division is for people who have been a member of a camera club for two years or more, have sold photography work or have completed advanced classes in photography in high school, college or an adult education situation. All other exhibitors will be classified for the "Novice" division.

The photos must be mounted on a cardboard/tag board or matted, with no frames or glass. The minimum print size is 5x7 inches. Trophies and cash awards will be

presented to exhibitors of top entries.

Prior to January 31, entries can be delivered to the Williams County Extension Office located in the Broadway Commons Building which is across the street from the new Law Enforcement Center. The preferable entry date is Monday, February 2 between the hours of 12:00 – 5:00 pm at the Grand Williston Hotel.

The photo contest also includes a non-competitive category which is for old-time black and white photos and professional photos of any size with no glass. These are a favorite for me as they bring back memories and of times before my birth. Photo exhibitors are asked to email a copy of their photo(s) to [ndsu.williams.extension@ndsu.edu](mailto:ndsu.williams.extension@ndsu.edu) before January 31 so that we can put together a slide presentation to show during the Recognition Luncheon on Feb. 4.

Past photo contest winners.



Welcome to the  
**62<sup>nd</sup> National  
Hard Spring  
Wheat Show!**

Feb 2-4, 2015 at the  
Grand Williston Hotel

**NATIONAL HARD SPRING**  
*NDSU's Best of the Best*  
**WHEAT SHOW**



**Sponsored by the National Hard Spring Wheat Show Board**

# Buy Local Products & Services In The MonDak Area

## Badlands Steel of Williston



Ryan Luebke gets ready to shape a piece of steel at Badlands Steel in Williston.

Badlands Steel, Williston, serves area farmers and ranchers as well as the oil field, working with new steel which they bend, shear and fabricate. The three owners Stewart Vachal (general manager), Rory Anderson and Dean Klein are all longtime Williston residents who joined together in April 2007 to open Badlands Steel. Manager Dennis Stevens has lots of experience having worked with steel for 15 years.

The company has a plasma cutter which can do specialized industrial applications. The cutter will cut through 2" thick material allowing them to build such things as specialty tools and pipe stands. The cutter takes away a lot of the labor for welders and other fabricators. They bring in the specifications, have

the pieces cut, and the welders can finish the jobs.

Badlands Steel has other specialty equipment, such as the "piranha" which allows them to produce recision holes of varying sizes, or their band saw which cuts strip after strip of identical steel. "We do the prep work. They (welders and others) do the rest," Vachal comments. He says the hardest part of the business is the fluctuating price of steel, which is based on global markets.

Badlands Steel invites you to stop by for all your steel needs, and to check out the plasma cutouts for yourself or as a gift. The business is located at 4324 4<sup>th</sup> Ave. W., Williston. The phone number is 701-774-2231.

## PRAIRIE PACKING & MEATS CO.

- ◆ USDA Inspected Facility
- ◆ Local Beef & Pork 1/2s & 1/4s
- ◆ Custom Slaughter & Processing
- ◆ Choice Steaks, Roasts, Chops & Ground Beef
- ◆ Wholesale to Food Service Businesses



David Slais  
Plant Mgr.

Corner of Hwy 1804 &  
East Bypass in Williston

701-577-6788 • M-F: 7-530 • Sat: 9-Noon • Major Credit Cards Welcome

### We Carry:

- New Steel • Aluminum • Stainless Steel
- Misc. Piano Hinges, Weld On Hinges, Latches



Located Just North of Walmart  
4324 4<sup>th</sup> Ave. W., Williston  
701-774-2231

### We Have:

- Press Brake
- Shear
- Plasma Table
- Auto Feed Band Saw
- Piranha Iron Worker

### Customer Service is Our #1 Priority



Construction Materials • New Steel • Aluminum & Stainless

<b>Sidney:</b> 35002 CR 123	406-433-7737 • 1-855-810-2995
<b>Glendive:</b> 2703 W. Towne St.	406-377-4398 • 1-800-423-5219
<b>Plentywood:</b> Hwy 16 East	406-765-2624
<b>Williston:</b> 13896 W. Front St.	701-572-5493
<b>Miles City:</b> 12 Peggy Lane	406-874-7428

**Bret & Brady Smelser**  
**Kelly Moody • Ken Syme**  
**Tim Mulholland • Ernie Gawryluk**

Every Time. Every Day.

• Service • Parts • Support • 24/7

5151 Midland Rd. Billings, MT 59101 P: 800.332.7788	1057 Red River Rd. Sidney, MT 59270 P: 406.433.1135
---	---

From the field to the  
table...our quality  
sugar is grown and  
processed in the  
MonDak area.

Always available at your  
favorite grocery outlet.



**Sidney Sugars**  
INCORPORATED





# MT Alfalfa Seed Committee

## Announces Grant Funding Available

**30th Annual**  
Production Sale  
GELBVIEH • ANGUS

# KOUNTZ

## RANCH, INC.

WEDNESDAY  
**MARCH 4, 2015**  
1:00 PM AT KOUNTZ RANCH

5 MILES EAST, 3 MILES SOUTH OF BROCKWAY  
JOIN US FOR LUNCH PRIOR TO THE SALE.

*Selling*

70 Head of Gelbvieh, Balancer & Angus Bulls  
15 Black Yearling Balancer Heifers  
Guest Consignor: Eissinger Land & Cattle  
15 Black Yearling Balancer Heifers

• FREE DELIVERY WITHIN 250 MILES •

*We offer FREE:*

- Feed until April delivery
- Semen test & vet check before delivery

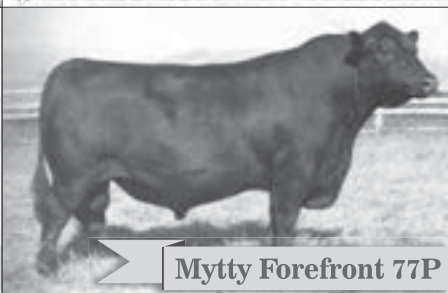
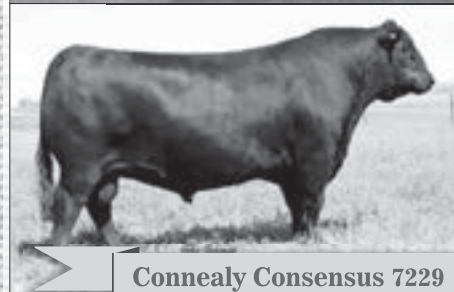
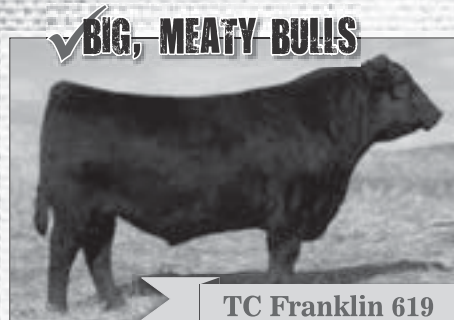
*ALL Bulls:*

- Will be ultra sounded for carcass traits
- Are guaranteed to be breeders
- Are performance tested
- Are tested free of PI-BVD

*Other Sires Represented*

- CC & 7 • SAV Iron Mountain 8066 • KHR 30W
- Bismarck 1075 • DJV Lead On 1175

✓ **BULLS CAN BE SEEN AT DYNNESONS' FEED LOT IN SIDNEY, MT**



For information & catalog contact:

BRAD KOUNTZ  
(406) 485-2191

CARY PHILLIPS  
(406) 485-2216

406 Brockway East  
Brockway, MT 59214  
ED HINTON, Auctioneer

## Request for Proposal Deadline February 3, 2015

Helena, Mont., The Montana Alfalfa Seed Committee is seeking proposals for grant funding available for projects, applied research, and feasibility analyses addressing Montana's alfalfa seed industry needs and opportunities. Montana produced over three million pounds of alfalfa seed valued at \$4.7 million in 2013.

Proposals should have practical, near-term application involving practices or organizational arrangements that will stimulate an expanded alfalfa seed industry. With \$35,000 available for project grants, the committee identified research projects about alfalfa seed fertility, including levels of micro-nutrients and macro-nutrients, and timing of fertilizer application, as their top priority. Additionally, the committee is encouraging applicants with projects benefiting the health and production of alfalfa leaf cutter bees to apply.

Generally, projects should be focused on projects improving the quality of alfalfa seed; development or improvement of control measures, alfalfa growing culture, or other research projects to benefit the industry; development of alfalfa seed industry including marketing, and promotions; or disseminating current and new information that benefits the alfalfa seed industry in Montana. For a full list of eligible projects, view the entire request for proposal.

Proposals must be submitted by February 3, 2015 to the Agriculture Development Division, PO Box 200201, Helena, MT, 59620-0201. Projects will be reviewed and selected by the Montana Alfalfa Seed Committee.

The committee provides direction for research and marketing toward the continued growth of the alfalfa seed industry and is comprised of eight members, serving three-year terms, appointed by the Governor. The next public committee meeting will be held on Tuesday, February 17, 2015 at the Big Horn Resort in Billings, Montana.

The Montana Department of Agriculture's mission is to protect producers and consumers, and to enhance and develop agriculture and allied industries. For more information on the Montana Department of Agriculture, visit [agr.mt.gov](http://agr.mt.gov).



# **SUPPORTING** **AG** ***We Lend Our Strength To Agriculture!*** **and serving the needs of our ag members**

[www.richlandfcu.com](http://www.richlandfcu.com)

## **SIDNEY**

201 West Holly St. • (406) 482-2704

Hours—9 a.m.-4 p.m., Mon.-Fri.

Drive-Up open 7:45 a.m.-5 p.m. M-F & 9  
a.m.-noon Sat.

24-Hour ATM



## **ROOSEVELT COUNTY**

18 East 2nd St. in Culbertson

(406) 787-5890

Hours — 9 a.m. - 3 p.m., Mon. - Fri.

# **Welcome To The Hard Spring Wheat Show!**



**We salute the Wheat Show committee on 62 years of promoting agriculture & educating area farmers & the public on the advancements in agriculture.**

**Mountrail-Williams  
Electric Cooperative**

*Williston, Stanley, New Town, ND*

**McKenzie Electric**  
*Watford City, ND*

**Sheridan Electric**  
*Medicine Lake, MT*

**Burke-Divide  
Electric Cooperative**

*Columbus, ND*

*Your Touchstone Energy Cooperative*





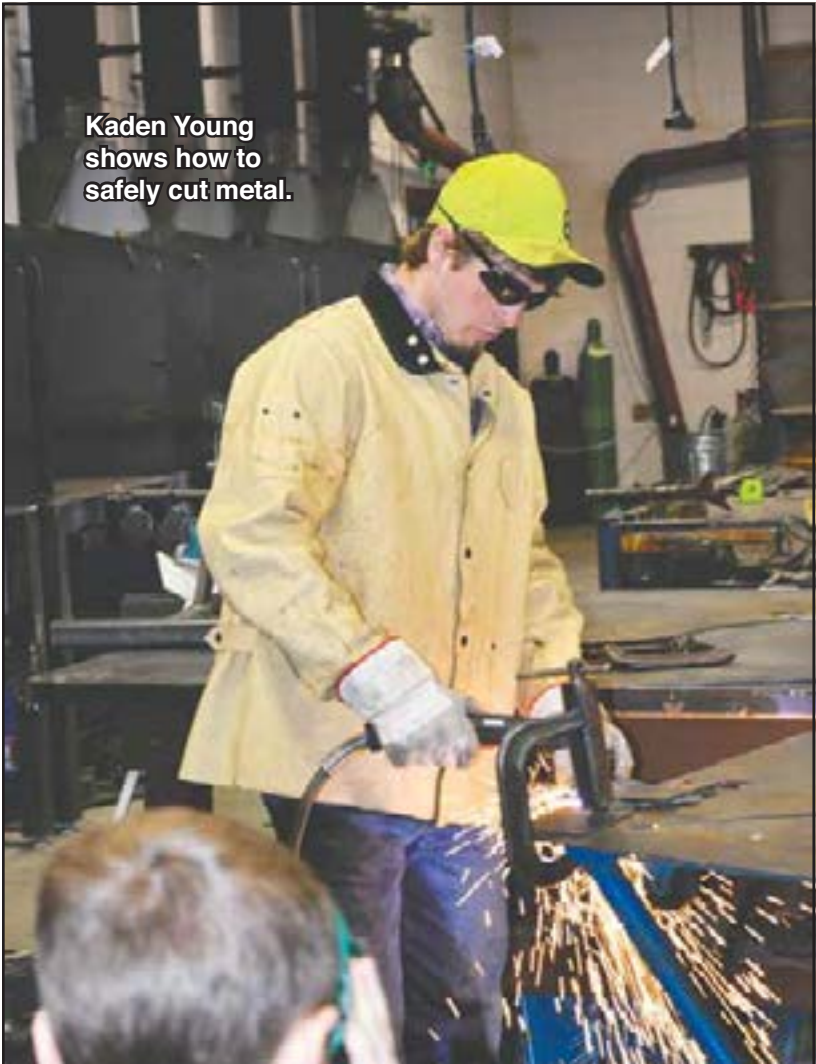
# Ag in the Classroom



Tell Hermanson demonstrates Welding Safety.



Sidney High School Ag in the Classroom presentation day was held Jan. 22. The Vocational Ag department presented the Plasma Cam, Torch & Welding Safety, Food Safety, Animal Safety and Tractor Safety to over 400 grade school students from schools around the area. Above: Ashlyan Johnston and Theresa Wick try on their Safety glasses before a presentation.



Kaden Young shows how to safely cut metal.



John Beyer and Marcus Lovegren present Tractor Safety.



# Keeping In Touch Has Never Been Easier!

**TK-2402**  
Hand Held 5  
Watts w/scan  
**\$289**



**SPOT**  
The 911 Device  
NOT to Die For!



**ALL-NEW**  
**SPOT TRACE™**  
THEFT-ALERT TRACKING DEVICE  
**Track Anything.** Anytime. Anywhere.

**Globalstar**  
**SATELLITE PHONES**

**\$149<sup>99</sup> mo** Unlimited Airtime  
• Plans to suit all your work  
& recreational needs!



**7302 HV**  
16 channels with scan  
as low as **\$359**



Call Larry Today At...

**ADVANCED**  
**COMMUNICATIONS**

Hand Helds, User Friendly Radios & Other Devices!

*"Your Communication Headquarters"*



Mobile Radios • Pagers • Satellite Telephones | Just North of McDonald's • Sidney, MT | 406-433-1659 • Toll Free: 1-866-433-1659

**Williston, ND**

701.572.8354  
866.572.8354

**Wildrose, ND**

701.539.2272

**Zahl, ND**

701.694.4111

**Culbertson, MT**

406.787.6606

**Fairview, MT**

701.844.5775

**Savage, MT**

406.776.2489

## WINTER GRAIN BIN SPECIALS



horizonresources  
Solutions for your success.



We're here to help with your storage needs with Westeel Wide-Corr grain bins and bin packages, complete with full floor aeration and unload systems. From 3,000 to 30,000 bushels, we have Westeel storage systems available for you!

[WWW.HORIZONRESOURCES.COOP](http://WWW.HORIZONRESOURCES.COOP)



# Sidney Sugars Honors Top Producers of 2014



By Meagan Dotson

The Top Ten Beet Growers Awards were held on Wednesday, January 14 at the Elks in Sidney. Recognized were the top five growers with 50- 282 acres and the top five growers with more than 282 acres. Tons per acre, sugar percentage and rating were all factors in determining who would be recognized. Before the growers were announced, Russ Fullmer of Crystal Sugars reviewed the 2014 season noting that it's one of the best in years in terms of sugar content and tonnage. The record breaking crop can be attributed largely to the ideal weather, with the exception of some heavy rains during the beginning of harvest and high winds which damaged two beet piler booms, one in Pleasantview and one in Culbertson. Farmers were able to plant about ten days earlier than usual, and while moisture was a concern, spring rains quickly put worries to rest. To everyone's pleasant surprise there were no damaging hail storms and September brought warm days and cool nights which was great for sugar content, the average being 18.44%. Roundup Ready Beets were largely credited for the tonnage which was 30.4 tons per acre or approximately 30,000 plants per acre. Even fields that had bouts with disease recovered nicely and had a good yield. Once the early harvest rains dissipated, harvest went smoothly and steadily and ended on October 25. The Top Growers have been recognized annually since 1985, the same year Fullmer started at the factory in Sidney and he notes that this is one in a series of finalities for him as he will be retiring at the end of 2015. The Top Five Growers with 50-282 acres are 1) Don and Doreen Snideman, 2) Rob Schilling, 3) Rodney Hurley & TNT Farms, 4) John Hoffman, and 5) 3 G Johnson Farms. The Top Five Growers with more than 282 acres are 1) DC Farms & T&J Farms, 2) Texas Red Enterprises, 3) Tim Karst, 4) 6J Farms, and 5) Harvey, James, John and Pat Asbeck. Congratulations to all the Top Growers of 2014.

Pictured are the Top 10 Growers for 2014. From L-R, back row: Top Growers (over 282 acres) Todd and Dean Steinley of DC & T&J Farms; Jeff Beiber of Texas Red Enterprises; Tim Karst, Terry Cayko of 6J Farms, and James, Harvey, John and Pat Asbeck. Front row: Top Grower (50-282 acres) Don Snideman; Rob and Tyler Schilling; Ty, Rodney and Tim Hurley of Rodney Hurley & TNT Farms; Brandon and Casey Johnson of 3 G Farms. Not pictured: John Hoffman.

## 282 Acres or More

Grower .....	Acres .....	TPA .....	Sugar% ....	Quality Rating
DC Farms & T&J Farms .....	648 .....	36.4 .....	18.39 .....	32.94
Texas Red Enterprises .....	315 .....	35.6 .....	18.55 .....	32.81
Tim Karst .....	357 .....	32.1 .....	19.36 .....	32.19
6J Farms .....	285 .....	31.9 .....	19.39 .....	32.14
Asbecks .....	416 .....	34.1 .....	18.44 .....	32.09

## 50 - 282 Acres

Grower .....	Acres .....	TPA .....	Sugar% ....	Quality Rating
Don & Doreen Snideman .....	135 .....	36.9 .....	18.03 .....	32.79
Rob Schilling .....	144 .....	37.1 .....	17.83 .....	32.65
Rod Hurley & TNT Farms .....	122 .....	33.6 .....	19.12 .....	32.56
John Hoffman .....	57 .....	32.3 .....	19.52 .....	32.44
3G Johnsons Farms .....	265 .....	33.1 .....	19.11 .....	32.36



## We Support Our Agricultural Community!



Be sure to attend the National Hard Spring Wheat Show at the Airport International Inn, Williston, Feb. 2-4



### Loyal Order of Moose

Williston Lodge No. 239

101 W. 2nd St. • Williston, ND • 701-572-2342

## We Have The Steel Building To Suit Your Needs



### Come By To See About Our Spring Scheduling!

Excavation To Completion Or  
Materials Only!  
Design Services Available!

Jim Bell, Manager • 406-480-7249 (Cell)



Open M-F: 8am - 5pm • Sat: 9am - 1pm  
34940 Hwy 23, Sidney | Office: 406-433-1888

## New Year, New Equipment, Same Great Service!

*Surprise Your Valentine With*



FARMERS ELEVATOR



Cold Weather  
Isn't A Problem!

**Carhartt**  
Hard at work since 1889.



Stock Trailers • Goose Necks • Bumper Pulls

By Titan &  
Road King



Special  
Orders  
Welcome!

1281 S. Central • Sidney, MT | 406-433-1401 | [www.cenex.com](http://www.cenex.com)

Open 7 days a week • Mon - Sat: 6am - 9pm • Sun: 9am - 6pm



# DC & T&J Farms Named Top Grower with 648 Acres



**Todd Steinley (L) and Dean Steinley (R) are recognized as the Top Growers with more than 282 acres at The Top Ten Awards on Wednesday, January 14.**

**By Meagan Dotson**

Brothers Todd and Dean Steinley of DC and T&J Farms were named Top Grower of the over 282 acres category with 648 acres, 36.4 tons per acre, a sugar content of 18.39% and a rating of 32.94. Todd Steinley has been farming since 1990 and Dean Steinley has been farming since 1995. Their grandfather began growing sugar beets in the late the 1920s when the factory opened and since then it has been a family operation for them as their dad continues to farm and all of their kids with them. The Steinleys have land all over the Sidney area including land north of town. They attribute their success to the “luck of the draw” with summer days that didn’t get too hot and no severe storms; the excellent year seemed to work out just as it was supposed to.

“We had rain and sunshine at the right times,” said Dean Steinley of the phenomenal season.

Both Steinleys were surprised at being Top Grower because they have so much acreage and while they were on the Top Ten list in 2007, they have never been named Top Grower before.

“Every year you try your hardest,” commented Todd Steinley. “You get out of it what you put into it.”

In addition to beets, they also grow malt barley, spring wheat and alfalfa. Though some of the challenges this year are commonplace such as fighting spring winds, the biggest issue is finding help. The oilfield has drawn many people away from farm work, however, their hired man, Gene Asbeck has been with them for four going on five years and plays an important role in seeing each season through.

“It’s got to be in your blood,” said Todd Steinley of farming. “You do it because you love to do it.”



# GATE AT EXPO 37<sup>th</sup> Annual 2015

**Glendive Agri-Trade Exposition**  
**Fri & Sat, Feb 13<sup>th</sup> & 14<sup>th</sup>**

Lunch Served  
 Both Days By The  
 Gateway Cowbells

## Exhibit Hours:

Friday: 9am - 6pm  
 Saturday: 8am - 4 pm



**GATE Raffle: Tickets are \$5 each or \$25 for 6**

**Grand Prize:** Weatherby Vanguard Deluxe 270 Winchester with a beautiful Woodstock & a 4-16x50 Scope. **1<sup>st</sup> Prize:** Ruger 77/17 Hornet with Heavy Duty laminated stock & Nikon 3-9x40 Scope. **2<sup>nd</sup> Prize:** Remington 870 Wingmaster 12 gauge shotgun with a 28" barrel & high gloss Woodstock. **Drawing held after the banquet.**

**As an added incentive in 2015, attending the Rangeland & Cropland Weed Seminars from 1-5pm will earn you 3 points!**

## Friday Schedule

9am - 6pm ..... Tradeshow  
 1 - 5 pm ..... Cropland & Rangeland Seminars

## Saturday Schedule

8am - 4pm ..... Tradeshow  
 4pm ..... Raffle Drawing  
 6pm ..... Banquet at the Moose Lodge  
 with Keynote Speaker & Humorous Presentation by Northern Ag Network's Rocky Erickson  
 Valentines Special Dance to the Exceptional Sam Platt & The Kootenai Three

Call 406-987-3777 or visit the website at [www.GATEXpo.com](http://www.GATEXpo.com)

# Welcome To The WHEAT SHOW!

## Williston Economic Development

701-577-8110 • Toll Free: 800-735-6959 • [www.WILLISTONDEVELOPMENT.COM](http://www.WILLISTONDEVELOPMENT.COM)  
 22 E. Broadway • PO Box 1306 | Williston, ND 58802-1306

Welcome to the 62<sup>nd</sup> National Hard  
 Spring Wheat Show, in Williston, ND

**Budweiser**  
 The Great American Lager

**DELANEY DISTRIBUTORS  
 INC**  
 WILLISTON, NORTH DAKOTA

THINK FRESH DRINK FRESH

We Invite You To Visit Us At The  
**62nd Annual**  
**National Hard Spring Wheat Show**  
 February 2nd – 4th



**MOTOROLA  
 SOLUTIONS**

Radio Solutions Channel Partner



**KOHLER  
 COMMUNICATIONS, INC.**

14012 W. Front St. • Hwy 2 & 85 W. • Williston, ND | 1-800-735-4932 • 701-774-8596

MOTOROLA, MOTO, MOTOROLA SOLUTIONS and the Stylized M Logo are trademarks or registered trademarks of Motorola Trademark Holdings, LLC and are used under license. All other trademarks are the property of their respective owners.  
 © 2015 Motorola Solutions, Inc. All rights reserved.



# Don And Doreen Snideman Are Recognized As The Top Grower With 50-282 Acres

By Meagan Dotson

For Don and Doreen Snideman who were named Top Grower with 50-282 acres, farming is a family tradition that they are proud to continue. The farm located west of Glendive along the Buffalo Rapids Irrigation Project has been in Doreen Snideman's family since the late 1920s-early 1930s. Doreen Snideman's grandfather came to the area from Nebraska when the beet factory opened; the factory went to Nebraska looking for farmers who were willing to relocate and grow sugar beets. Since then, her father and uncles have all farmed the land and she, as a third generation farmer, was pleased that her husband became a part of that tradition.

"I'm very proud of my parents and their work ethic and I'm very proud of

Don. He's so humble and that's a nice quality to see," says Doreen Snideman of her husband.

Don Snideman has been farming for twenty years and feels farming is more of a way of life than a job. Their crops include sugar beets, corn, wheat, alfalfa and barley. The Snidemans were named Top Grower with 135 acres, 36.9 tons per acre, 18.03% sugar content, and a rating of 32.79.

"The weather was by far the determining factor with the crop, it played a huge role. We were blessed with a big crop and Mother Nature really helped," said Don Snideman.

He also notes that there are challenges all the way through the season regardless of what kind of crop it is and adds that it is always a team effort and a family operation. In addition to their hired man who is "a tremendous help and one of the nicest people you'll ever meet", the couple's two daughters ages eleven and seven, go irrigating with their parents daily.

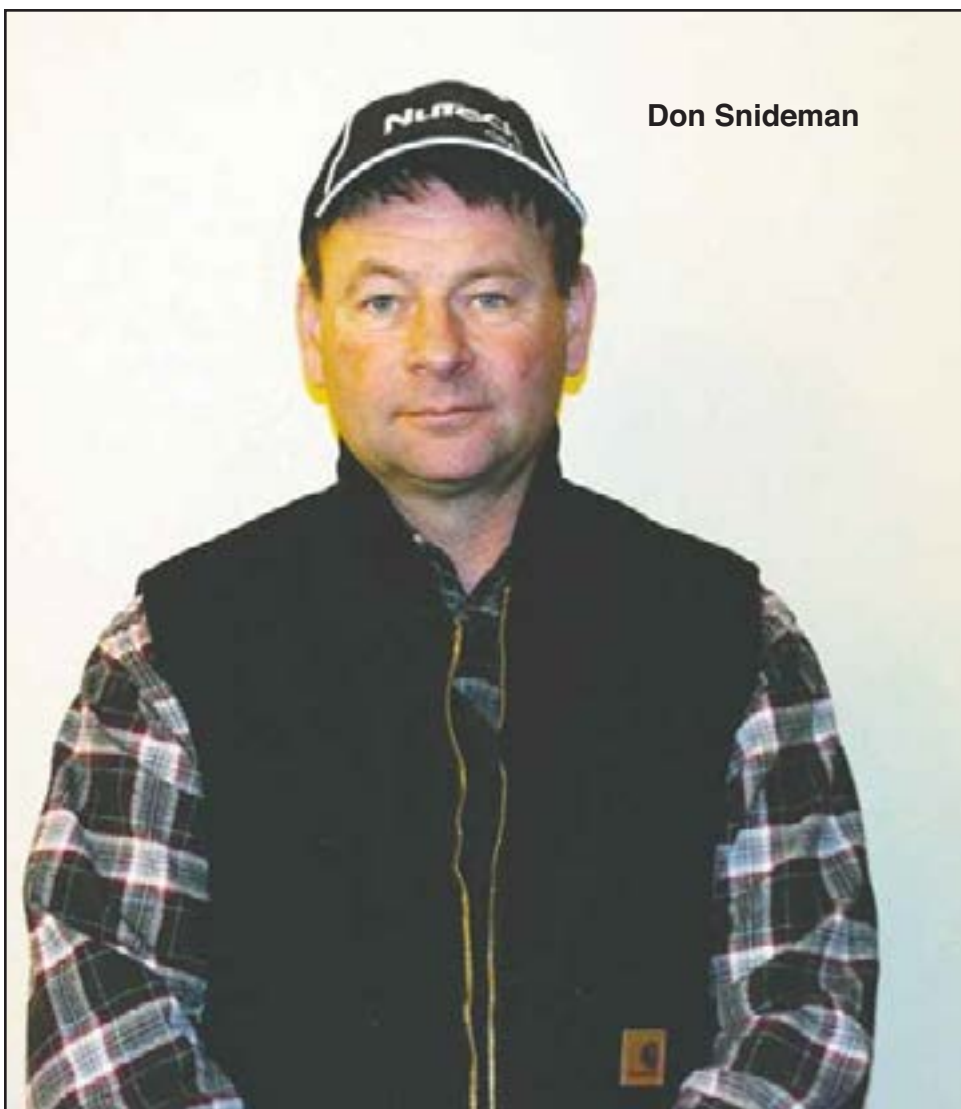
Although they have been recognized on the Top Ten Growers list before, this is their first year being named the Top Grower.

"It's a blessing, that's for sure," said Don Snideman at the Top Ten luncheon that was held Wednesday January 14. "I'm very surprised and honored."

## MFU Offers Scholastic Scholarships

GREAT FALLS, MT - The Montana Farmers Union (MFU) and several of its county organizations once again will offer scholarships to high school graduates planning to attend a university, college, community college or college of technology in or out of state. In addition, several memorial scholarships and opportunities offered by National Farmers Union are available as well. All told, MFU offers at least \$3,000 in scholarships, with NFU offering a similar amount.

The award criteria include scholastic achievement, school, community and Farmers Union involvement, Farmers Union membership, as well as an essay. All application information is available on the MFU website: [www.montanafarmersunion.com](http://www.montanafarmersunion.com). The MFU scholarship deadline is March 1, 2015. MFU also offers a competitive grant program available to members of the FFA & 4-H. These grant funds are made possible through the effort of the Montana Farmers Union Board of Directors. The application deadline is ongoing. Please see the MFU website for details.



Don Snideman



# Montana Cowboy Hall Of Fame To Honor Inductees At Circle The Wagons Gathering And Cowboy Ball In Helena, Feb. 7

## Submitted by Montana Cowboy Hall of Fame and Western Heritage Center

The Montana Cowboy Hall of Fame & Western Heritage Center (MCHF & WHC) extends an invitation to all to attend the 9th Annual Circle the Wagons Convention in Helena, Feb. 6 & 7 at the Great Northern Best Western Premier.

"This is an exciting time for the Montana Cowboy Hall of Fame," said MCHF & WHC President Bill Galt of White Sulphur Springs. "In this world focused on celebrity, fame and fortune, we are so glad to be able to honor those who set a positive example in their communities through their everyday deeds and hard work. We hope to see anyone and everyone who cares about Montana's Western heritage at this fun event in Helena."

The weekend will kick off Friday evening, Feb. 6 with a free Cowboy Social featuring entertainment by the Dillon Junior Fiddlers. The Inductee Recognition Ceremony Brunch will be held on Saturday, Feb. 7 at 10:30 a.m. to celebrate the notable accomplishments and lasting legacies of the inductees to the Montana Cowboy Hall of Fame Class of 2014. Tickets are \$30 per person. Early registration is recommended as this event sells out well in advance each year!

The 9th Annual Cowboy Ball and Benefit Auction will kick off at 6:30 p.m. on Saturday with a social hour and auction preview. This event will feature great Western music by World Livestock Auctioneer Champion Kyle Shobe and his band The Walk 'Em Boys. There will be both a silent and live auction featuring unique and Western items. Tickets to the Cowboy Ball are \$50 per person or \$450 for a 10-person table.

Register online at [www.montanacowboyfame.org](http://www.montanacowboyfame.org), by calling (406) 653-3800, or email [cstensland@montanacowboyfame.com](mailto:cstensland@montanacowboyfame.com). Rooms may be reserved at the Great Northern Best Western Premier in Helena by calling (406) 457-5500.



**CASE IH**  
AGRICULTURE

## PROTECT YOUR RED BEFORE YOU SHED.



## THIS IS NO AUTOMOTIVE COOLANT.

The use of generic automotive coolant in your tractor is simply 'wrong.' Major diesel engine manufacturers estimate that more than 50% of engine failures are cooling system related. Unlike automotive coolants, XHD Heavy-Duty Coolant / Antifreeze is formulated specifically for hard-working diesel engines.

- Superior liner pitting protection for wet sleeve cylinder liners
- Excellent long-term corrosion protection for all cooling system metals
- Premix includes demineralized, reverse-osmosis treated water to prevent scale caused by hard water deposits
- Includes Bitrex®, a bittering agent, to reduce the likelihood of accidental animal ingestion for safe use around the farm

Visit your local Case IH dealership today and stock up on XHD Heavy-Duty Coolant / Antifreeze.



**CNH** ORIGINAL  
PARTS

©2009 CNH America LLC. All rights reserved. CNH and Case IH are registered trademarks of CNH America LLC.

**TRI-COUNTY  
IMPLEMENT INC.**

2429 W. Holly Street  
Sidney, MT 59270  
Phone: (406) 488-4400



# Bidegaray Brothers

## Co-operators Of The Year

**By Julie Goss, Richland County Conservation District**

Richland County Conservation District has been recognizing individuals who co-operate with the district to implement conservation practices on the land for many years. In 1977 Jean Bidegaray received the distinction of conservation district co-operator of the year. Building on the conservation practices that their father began, Remi and Claude Bidegaray have been named Richland County Conservation District Co-operators of the Year for 2014.

Remi and Claude operate their diversified farm and ranch entity under Bidegaray Brothers, together they are continuing to implement conservation practices on their land. The operation is dryland cropland, irrigated cropland and rangeland. They grow corn, alfalfa, barley and spring wheat, using most of the crops as feed for their cattle operation. Irrigation water is pumped out of the Missouri River.

In the early 1990s they entered into a long term agreement with the Natural Resource Conservation Service and the Richland County Conservation District to begin leveling river bottom land to improve irrigation efficiency. In 1993 they used the Great Plains Conservation Program to improve rangeland. They installed cross fences and water accesses in order to distribute cattle more effectively on the rangeland. They also planted trees to offer shelter around the feedlot. Marginal cropland was entered into the Conservation Reserve Program (CRP) benefiting the soil and the wildlife. Using the Environmental Quality Incentives Program (EQIP) program in 2005 they added more stockwater pipelines. Due to the sandy soil on their operation they removed the field ditches and replaced them with buried piepe and began using gated pipe to irrigate their crops. They operated pivots on some lease land and realized the efficiency, water savings and timesavers that they provide. They also have a severe problem with pocket gophers damaging their irrigation ditches causing ditches to blow out resulting in sedimentation in the field. Seepage in the ditches hampers the ability to get water to all of the fields. With the help of EQIP they were able to install two pivots on their operation. This has helped them get an even application of water on the varying soil types. They are able to adjust the pivot operation according to soil types, fast pivot movement with low water application on heavy soils to prevent runoff and slow movement with high water on sandy soils. Remi and Claude participated in the Conservation Districts soil moisture monitoring project. This project helped flood irrigators that converted to pivot see how much moisture was in the soil at varying depths. They continue to participate in Irrigation Water Management using several different methods: wireless monitoring system, flow meters and the checkbook method. Water conservation and improved efficiency are important to the Bidegarays. In 2011, Remi and Claude entered into the Conservation Stewardship Program enhancing their operation with cover crop cocktails to improve soil health, implementing no till on both irrigation and dryland cropland and improving their Rangeland management with grazing rotations.

In order to be in compliance with the endangered species act for the Pallid Sturgeon, MT FWP and the US Fish and Wildlife Service proposed to mimic a spring rise on the Missouri River. Several pumpsites were in danger of being lost due to the elevation of their sites. Conservation Districts along the Missouri

River and NRCS worked together to help these landowners move their pumpsites to higher ground in anticipation of this "spring rise". Remi and Claude retrofitted two pumpsites with this project. The moving of these pumpsites proved to be beneficial during the actual flood of 2011.

Having irrigation pumpsites on the Missouri comes with its own special problems, specifically the silting in of the sites during the winter months. In order to assist Missouri river irrigators with this Richland and Roosevelt County Conservation Districts operate a dredge to clean out these sites. Remi and Claude are supportive of the Dredge and are always willing to help the dredge operator when he is working in their stretch of the river. They also help launch the dredge into the river at their pumpsite. This is very helpful due to the lack of boat ramps on the Missouri River.

By following in their father's footsteps and continuing to conserve, maintain and improve the natural resources on their operation; Remi and Claude know the value of protecting the natural resources for the next generation. Richland County is proud to honor them as Conservation District co-operators of the year for 2014.-



**Claude Bidegaray (L) and Remi Bidegaray (R) were recognized by the Richland County Conservation District as Conservation District Co-operators.**

# Serving Farm & Ranch Tire Needs for over 60 Years



- ***On-The-Farm & In-The-Field Tire Service***
- ***Quality Firestone Tractor and Implement Tires***

- \*Straight Talk
- \*Honest Service
- \*Fair Prices



**TOYO TIRES**  
DRIVEN TO PERFORM

## Western Tire Co.

1601 SOUTH CENTRAL • SIDNEY, MONTANA  
433-3858 • Open 7-5:30 M-F & 7-Noon Sat.

**AFTER HOURS CALL FORWARDING TO SERVICE REP**



## Contact Us About Your Spring Irrigation Plans!



### Services Offered By Valley® at Your Local Valley® Dealer:

Valley® Pivot Sales Installation Services and Parts • Floating Irrigation Pumps Installation & Repair • Pipeline

**Join Us At The National Hard Spring Wheat Show**  
**Feb 2nd – 4th At The Grand Williston Hotel!**



### Agri Industries Offers These Services:

- Valley Pivot Sales • Installation Services & Parts • Floating Irrigation Pumps
- Installation & Repair • Electrical • Pipelines • Water Well Drilling & Well Maintenance
- Plumbing • Trenching • Boring • Directional Drilling • Heating & Cooling • Full Parts Counter

**“WE CAN DO IT ALL! NO SUBS NEEDED.”**

<b>Sidney, MT</b>	:	<b>Williston, ND</b>	:	<b>Miles City, MT</b>
1775 S. Central Ave.	:	3105 - 2nd St. W	:	2106 S. Haynes Ave.
406-488-8066	:	701-572-0767	:	406-234-2309