

Farm & Ranch Monthly Magazine

Published monthly by The Roundup
PO Box 1207 • Sidney, MT 59270 • 1-800-749-3306

PRSR STD
U.S.
POSTAGE
PAID
The Roundup
ECRWSS
Postal Customer

AR
ROUNDUP

**June
2014
Edition**

Horsemanship Clinic

See page 21

Sidney Chamber Ag Appreciation Golf Tournament July 14



2013 1st Place Team, Sponsored by Lower Yellowstone Irrigation Project, (L-R) Neil Turnbull, Gene Fisher, Patrick Hackley and Dillon Murray.

Join in on the fun and support your local ranchers and farmers by sponsoring the 15th Annual Ag Appreciation Golf Tournament which will be held on July 14th.

The event is organized by the Sidney Area Chamber of Commerce and Agriculture, which is in the process of getting sponsors lined up for the event. Sponsorships are available at three different levels: \$50 golf cart sponsorship or \$200 team sponsorship. The \$50 sponsorship includes signage to promote business. The \$200 sponsorship allows two people from the business to be part of a team, partnered with ranchers and farmers. Prize Sponsors are also welcome. All sponsorships and golfer registrations are offered on a first paid, first reserved basis.

This is a great way to mingle and make connections with your farm and ranch friends and customers. For more information about sponsorships or to sign up to play please contact the Sidney Area Chamber of Commerce and Agriculture at 406-433-1916.



2013 2nd Place Team Sponsored by 1st Bank. (L-R) Tom Thompson, Camron Debruycker, Billie Taylor and Brad Franklin.



3rd Place Team Sponsored by XTO Energy (L-R) Dale Danielson, Jim Noble, Don Helm and Harold Schlothauer.

Serving Farm & Ranch Tire Needs for over 60 Years



- ***On-The-Farm & In-The-Field Tire Service***
- ***Quality Firestone Tractor and Implement Tires***

*Straight
Talk
*Honest
Service
*Fair
Prices



TOYO TIRES
DRIVEN TO PERFORM

Western Tire Co.

1601 SOUTH CENTRAL • SIDNEY, MONTANA
433-3858 • Open 7-5:30 M-F & 7-Noon Sat.

AFTER HOURS CALL FORWARDING TO SERVICE REP

FFA – Enhancing Skills You Already Have



By Tie Shank

2014 Sidney High School graduate Emily Schaff sets her sights on Rocky Mountain College in Billings, MT to pursue her educational goals and studies in Communication.

Growing up in Sidney, Schaff was involved in 4-H but wasn't raised on a farm or ranch. She became involved in the National FFA Organization during her 8th grade year due to the influence of her parents, Gary and Mary Schaff.

Her father, Gary, retired from Sidney schools this year after teaching Agriculture for the past 19 years and her mother, Mary, has worked at the Eastern Ag Research Center since 2006. Both her parents grew up on farms.

During her 8th grade year, Emily competed in The Creed Speaking competition during Leadership Day and took first place in the district. However she wasn't able to compete at the state level because she was not a high school student. After this and throughout her high school years in FFA, she realized her potential in public speaking and was very involved in Prepared Public Speaking and in Extemporaneous Public Speaking competitions.

Schaff states, "I want others to know that FFA is not just a group of farm kids, or a group to hang out with. You don't have to live on a farm to be involved in FFA. FFA helps kids to harness talents and enhance skills they already have. They help kids prepare to be successful in life."

Schaff's career goal is to work for the National FFA Organization or the Montana FFA Organization. It sounds like she's off to a great start.



SUNRISE EQUIPMENT

JOHN DEERE 2900 W. Holly, Sidney • 406-488-3112 • 1-800-967-3597 • www.sunriseequipment.biz

USED 4WD DRIVE TRACTORS

1989 JD 8760, 3 hyd's, 20.8x38 duals\$39,500
1995 JD 8970 (400 eng HP), powershift tranny, 4 hyd's,
520/ 85R42 duals.....\$69,500

USED MFWD & 2WD TRACTORS

2000 JD 5510 (75 PTO HP) sync shuttle tranny, MFWD, 3pt
hitch, 18.4x30 singles\$21,500

USED LOADER TRACTORS

2012 JD 7130 (110 HP), 16 speed powerquad tranny, MFWD,
3pt hitch, 3 hyd's, dual PTO, 18.4x38 singles, factory
warranty, low hours. NEW JD H360 loader, 8' bucket,
grapple, mech joystick\$118,900
2008 JD 7330, 20 speed, auto quad tranny, MFWD, 3pt
hitch, 3 hyd's, dual PTO, 18.4x42 singles, JD 741 SL
loader, 8' bucket, grapple, joystick\$98,500
2003 JD 7320 (105 PTO HP), 3pt hitch, 3 hyd's, dual PTO,
18.4 x 38 singles, 741 loader, 8' bucket, grapple and
joystick\$69,500
2008 JD 7330 (125 PTO HP) IVT tranny, MFWD, 3 pt hitch,
3 hydraulics, dual PTO, 18.4X38 singles, JD 741 SL
loader, 8' bucket, grapple, joystick\$109,500

USED COMBINES

(1) 2012 JD S660 combines, 520/85r38 duals, Contour
master, low low hours CALL
2006 JD 9660STS, 520/85r38 duals CALL
1990 JD 9600, 30.5x32 singles, chopper, chaff
spreader..... CALL

used set of 18.4x38 duals for 9600, 9610

(60%rubber).....\$3,000
2013 JD 635FD, draper platform with HHS in rigidCALL
2013 640 FD, draper platform, no HHS in rigid..... CALL
2012 635 FD draper platform, no HHS..... CALL
2010 JD 630R platform, pickup reel..... CALL
2004 JD 635F Flex platform, 35' CALL
1998 JD 930 platform with pickup reel..... CALL
1997 Macdon 960D platform CALL

USED HAYING EQUIPMENT

(2) 2011 JD 568 Round Balers, loaded. H241 & H242 ...\$36,500 ea
2010 JD 568 round baler, loaded, net wrap. H245 ...\$32,500
(2) 2009 JD 568 Round Baler, loaded. H176 & H206...\$34,500
2008 JD 568 Round baler, loaded. H227.....\$32,500
2007 JD 568 Round Baler. Loaded except for kicker bar.
H277.....\$28,500
2005 JD 567 round baler.....\$16,900
2003 JD 567 Round Baler w/ net wrap, mega wide. H077 ...\$21,500
1994 JD 535 Round Baler. H202\$8,500
1983 JD 530 round baler.....\$4,950
3970 Forage Harvester\$8,950

USED SEEDING EQUIPMENT

Flexicoil 5000/2320 Air Hoe Drill, 57', 7.2" Spacing (lot
F625).....\$42,500
(2) JD 9350 disk drills, 8' units, fertilizer, hitch\$4,750
(3) JD 9350 disc drills, 10' units, 6" spacing, fertilizer,
JD transport hitch.....\$11,500

USED MISCELLANEOUS

746 loader mounts for 77-7920\$500
(2) 740 Loader mounts for 7000 series\$300 ea
840 Loader mounts for 8000 series.....\$500
JD480B forklift, gas, 28' mast, side shift, fresh
overhaul\$8,950
2005 Brandt 5000EX grain vac\$12,500
2013 Brandt 13x70HP swing away auger.....\$23,500
2009 Brandt 10x60 Swing away auger.....\$9,500
2001 Brandt 10x60 swing away auger\$7,500
JD 780 manure spreader, hydra push, upper beater,
liquid end gate.....\$7,950
Diamond 72" & 62" mowers.....\$2,500

WOODS Batwing Mowers



**IDEAL FOR MAINTAINING PASTURES,
GRASSY FIELDS, DITCHES, CUTTING
WEEDS & LIGHT BRUSH.**

WOODS MOWER SALE

**Just An Example of Savings:
WOODS BW180
ROTARY CUTTER
WAS \$22,127**



NOW \$17,500

AUGER & GRAIN VAC SALE!



Brandt

Trust Brandt for industry-leading
augers that just won't stop!

BeefTalk: Beef and Oil

The center is integrating the changing dynamics of the energy industry into our mission.

By Kris Ringwall, Beef Specialist
NDSU Extension Service

The changing world of western North Dakota is a hot and cold topic. In a sense, most would consider change to be a point of reality. Seldom, if ever, does one get to make a statement about life and then control that point for a lifetime. We call that change.

Change always has been present, sometimes slow, sometimes fast, sometimes desired and sometimes not, but still present nevertheless.

Energy development has brought dynamic changes to western North Dakota. Our challenge as a historically agricultural-based region is to incorporate agriculture and energy in a productive manner that allows the past, present and future to coexist.

At the Dickinson Research Extension Center, our legislatively directed mission is to do research on native rangeland, beef cattle and agricultural soil products while emphasizing conservation and preservation for future generations.

The center is integrating the changing dynamics of the energy industry into our mission by expanding our relationship with the energy industry and still working with producers on conservation and preservation for future generations. Interestingly, as the center prepares for the development of a drill pad within the boundaries of the center's cattle pasture, this expanding relationship is conversational and physical.

Fences and cattle move, so patterns change and life will not be the same. An interesting point of change is that change can be from internal or external forces. In other words, self-driven or externally imposed.

This does not mean that one is more positive or negative than the other. It only means that the source of the change needs to be understood. Understanding the source helps, even if the outcome is still the same. Interestingly, these new developments are not new to those who came before us. Our ancestors also had to live with change.

Although unnoticed and without fanfare, the settling population has slowly died off in this state, and their sons and daughters are quickly leaving their shoes to be filled by a generation once removed. This generation no longer shares the deep roots of life on the land as the settlers knew it.

"It's about people" was a phrase utilized by former NDSU President Joe Chapman. It's a phrase that is at the core of what we do at the Dickinson REC.

To dismiss the need for people and minimize the importance of the sociological balance between urban and rural interactions and energy and agricultural interactions oversimplifies and destroys the sustainability of any social and production system.

The future of this region and the world must contain people in balance with the whole environment and sustaining dignified lifestyles. Those dignified lifestyles, always a potential loss in the winds of change, are at risk today. Not that current lifestyles are not dignified, but the whole mix of what it meant to be raised in total connectivity with the food around you through agriculture is no longer a majority thought.

Western North Dakota is at another "fork in the road" because it is dealing with problems associated with current and historical energy and agricultural systems. Although these systems work for some, the end result has been accelerated growth, leaving an aging rural agricultural population.

A concept of integrated agricultural and energy systems that are sustainable at the local level, keeps our rural population abundant, is beneficial to our urban partners and is capable of meeting the world's food and energy needs is slowly emerging. However, it is in its infancy.

Did the settlers really think through all the consequences of pounding a claim stake into a piece of ground? Probably not, but the need at the time was a potato to eat, some eggs to collect, a daily bucket of milk, a cellar for dry goods and, they hoped, a piece of meat. Starvation drove many settlers here, not economics. Keeping the next generation here certainly is not dependent on food availability.

If care is not taken, lost in the generational transition could be a way of life or purpose of existence that have less tangible positive impacts on "it's about people."

The center will continue expanding our relationship with the energy industry and working with agricultural producers to continue to emphasize conservation and preservation for future generations.

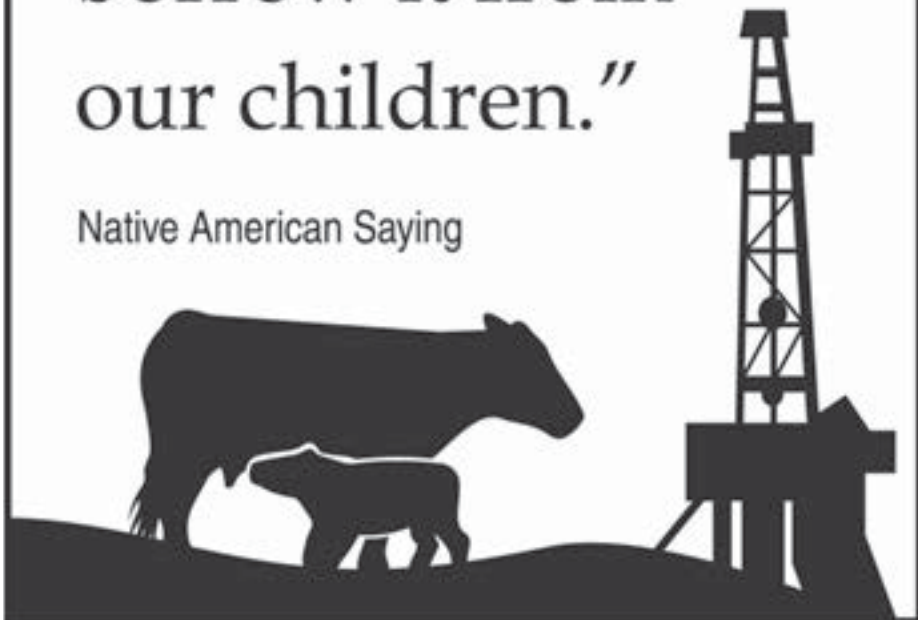
However, the answer already may be known if one learns from the past by reflecting on this old Native American saying: "We do not inherit the land from our ancestors; we borrow it from our children."

May you find all your ear tags.

For more information, contact Ringwall at 1041 State Ave., Dickinson, ND 58601, or go to <http://www.ag.ndsu.edu/news/columns/beeftalk/>.

"We do not inherit
the earth from our
ancestors; we
borrow it from
our children."

Native American Saying



Low Rate Financing Available On All New Case IH Equipment



Skidsteers, Various
attachments in stock



Farmall 110A w/loader



Steiger 550 Quad NEW



LB 434 Square Baler



Case IH WD1203 Windrower



RB 565 Round Baler

USED TRACTORS

1979 JD 4840, 3 pt, PTO	\$22,500
2008 CaseIH 435 Steiger, 710 duals, full auto guidance, HID lights, luxury cab, 1987hrs	SOLD!
1982 JD 4440, 3pt, 3 remote, quad range, new paint, duals, 11631hrs.....	SOLD!
2005 CaseIH MX255, MFD, 3pt, 3638hrs, 480/80R42 Duals w/CaseIH LX780 loader & grapple.....	\$108,000
Bobcat T190 track loader, cab, auxiliary hydraulics, 2002hrs.....	\$22,000
IH Hydro 70, gas engine, new tires, dual loader, grapple	\$10,000
1994 Case IH 7140 MFD, 3 remotes, 20.8 x 42 Duals, 7800 Hrs	\$49,000

USED MISCELLANEOUS

Farmhand 25' mulcher	\$11,500
(2) John Deere 2700 disc grippers, 7 shank.....	\$22,000 each
Artsway Belly Mower 6', mounts for a Farmall C	\$1,500
2005 Parma 30' mulcher	\$25,000

USED SEEDING & SPRAYING

Concord 4710 Drill, 3000 tow behind cart, hydraulic drive.....	\$30,000
2005 Brandt 2SB4000, suspended boom, 90', 1500 gal. tank	\$25,000
2005 CaseIH SPX 4410 self propelled sprayer, 1200 gal., 90' booms, Raven Auto Trac, 5700 Hrs, consigned	SOLD!

Summers 2pt sprayer, 88' booms, 500 gal tank, Dickey John monitor	\$6,500
Monosem 6 row, 24" planter	CALL
2005 CaseIH 2388, 1267R/1506E hrs., chopper, yield & moisture monitor, very good cond.....	CALL
w/ 2005 2042 35' draper head	CALL

USED HAYING EQUIPMENT

2008 CaseIH RB564 round baler, 8700 bales, mesh wrap, wide pickup, endless belts, hydraulic pickup lift, central lube ...	\$29,900
2006 RBX563 Round Baler, wide pickup, mesh wrap, endless belts, 8,000 bales, good cond.....	\$26,000

CIH RBX 563 baler, mesh, wide pickup...	\$25,000
2003 CaseIH RBX562, MeshWrap, Like New	\$24,500
2011 Haybuster 2650, hydraulic chute lift, big tires, very good condition.....	\$16,000
1999 CaseIH RS561	\$12,500
2008 Vermeer Processor, BP8000 ...	\$10,500
1995 CaseIH 8465	\$8,995
1994 CaseIH 8480 Softcore	\$6,995
1990 Hesston 560 Round Baler.....	\$5,500
New Holland 1475 mower conditioner...	\$8,500
USED COMBINES	
2006 2388, 2103 engine hours/1656 sep. hours, chopper w/30' 972 Macdon draper head, pickup reel, consigned	\$130,000

FINANCING PROVIDED BY
CNH CAPITAL
LENDING | LEASING | CREDIT CARDS | INSURANCE

TRI-COUNTY IMPLEMENT

CASE IH
AGRICULTURE

© 2007 CNH America LLC. All rights reserved. Case IH is a registered trademark of CNH America LLC. CNH Capital is a trademark of CNH America LLC. www.caseih.com

Sidney, MT • 2429 W. Holly • 406-488-4400
1-800-624-6540 • Visit our web site at tri-cnty.com

LIFT WITH YOUR FINGER, NOT YOUR BACK

Exclusive PowerFold® option lifts decks with the flip of a switch.

- Effortlessly raises FrontMount™ DuraMax® decks
- Access to underside of deck for easy maintenance
- Shortens length to simplify storage and trailering

Visit your dealer today for a demonstration!

TRI-COUNTY IMPLEMENT
SIDNEY, MT • 2429 W. HOLLY
406-488-4400 • 1-800-624-6540
WWW.TRI-CNTY.COM



GRASSHOPPER
IT'S SO MUCH MOWER™

GRASSHOPPERMOWER.COM

USED Mowers

Dixie Chopper LT 2500, 50" Deck.....	\$5,500
Grasshopper 618, 52 Front Deck.....	Call
Grasshopper 325D, Kubota Diesel engine, midmount, 72" Deck, 325 Hrs	Call

New Grasshoppers

Large selection of new front mount powerfold models in stock.

NDSU Extension Service: 4-H

Prepares Youth for Future

4-H is North Dakota's largest and only research-based youth development program.

**By Brad Cogdill, Director
NDSU Extension Service
Center for 4-H Youth
Development**

For more than 100 years, 4-H has played a key role in preparing youth to meet the challenges of tomorrow.

4-H is one of four key areas in which the North Dakota State University Extension Service focuses its programming. 4-H also is the largest and only research-based youth development program in North Dakota. It is available to all youth ages 5 to 18 in every county in North Dakota. Even though Extension Service work benefits youth and adults, the Extension Service believes that youth are a significant audience because the youth in our state are our future.

In 2014, the NDSU Extension Service celebrates the 100th anniversary of the signing of the Smith-Lever Act, which created the national Cooperative Extension System. As part of that celebration, we are focusing on how we extend knowledge and change lives.

The Extension Service, 4-H included, is largely responsible for moving technological and scientific advances from the laboratory and the test plots to practicing farmers and homemakers more rapidly than had been done anywhere else in the world. This centennial achievement makes it a fitting time to also recognize 4-H's achievements during those 100 years.

The passage of the Smith-Lever Act provided a permanent home for the educational movement called 4-H. Even though youth work was not specifically mentioned in the act, its supporters understood that youth work was the foundation for successful Extension endeavors. Today, we continue to affirm that by saying a strong Extension program equates to a strong 4-H program.

History well documents that no one person is credited with starting 4-H. It began as an enduring idea that was scattered among concerned citizens, school teachers, agricultural scientists and farm families. It was focused on creating an enlightened, future-focused and action-driven citizenry.

During its first 80 or so years, 4-H changed from an organization primarily concerned with improving agricultural production and food preservation to one dedicated to the development of young people. As it has evolved even further, a



Brad Cogdill, director of the NDSU Extension Service's Center for 4-H Youth Development

deeper relationship also has resulted between what young people are learning through 4-H and its connection to jobs and careers they choose.

It began through the concepts of youth and adults working together; providing youth with hands-on, real-life learning experiences; making land-grant university research accessible, practical and useful; helping youth become contributing, productive members of society; and creating an environment where youth are safe and supported. Due to its tie to the land-grant university, 4-H was rooted in the ideas of science as a base for its work.

Today's 4-H is built on the same basic principles and continues to offer traditional programs in subjects such as livestock judging, crops, and clothing and textiles. However, to meet the changing needs of our North Dakota youth and to ensure that 4-H remains a modern, vibrant, relevant organization that responds to current and future needs, it also offers programs in areas including aerospace, communications, personal development and leadership, civic education, shooting sports, geospatial science, energy and robotics. 4-H also devotes considerable time to planning, developing and implementing projects relevant to contemporary society.

More than 25,000 youth participate in 4-H programs each year in North Dakota. Youth participate through clubs, camping, special-interest groups, after-school programs and school-day enrichment experiences. For many youth, it is the only youth development program opportunity available to them because they live in rural areas where other youth programs do not exist.

4-H also relies on the support of a remarkable number of dedicated adult volunteers and community members.

Research now supports what we have known for years: 4-H makes a difference in the positive development of a young person. An eight-year study starting in 2002 surveyed more than 7,000 adolescents from diverse backgrounds across 42 U.S. states, including North Dakota. The study found that 4-H helps young people excel beyond their peers. The study defined and measured positive youth development and showed that youth involved in 4-H programs excel in several areas. 4-H'ers are:

Four times more likely to make contributions to their communities

Two times more likely to be civically active

Two times more likely to make healthier choices

Two times more likely to participate in science, engineering and computer technology programs during out-of-school time

The study also found that 10th-grade girls in 4-H are two times more likely and 12th-grade girls in 4-H are nearly three times more likely to take part in science programs, compared with girls in other out-of-school time activities.

Today the competition for young people's time and talents is tremendous. Likewise, adults as parents and volunteers face the same challenges. The results of this study provide a compelling reason why youth need to be part of 4-H. It also provides a compelling reason for parents and adult volunteers to be engaged in the program.

And now we also know, based on results of research, 4-H is an enduring idea that works. It works for the betterment of the youth who participate, the adults who work with them and the communities it serves. When 4-H youth pledge their head, heart, hands and health to better living, it really does mean for better living.

HOUSE, BUILDINGS & REAL ESTATE AUCTION

**SATURDAY,
JUNE 14, 2014
12:00 NOON**



6.8+/- ACRES

OWNERS: Brad and Brian Sharbono whose address is 21 Road 240, Glendive, MT will offer the following property to the public at auction. The final bid will be subject to their approval. The Owners reserve the right to accept or reject any and all bids.

PROPERTY LOCATION: From Glendive, MT- Take Interstate 94 W for 6 miles, take Exit 204 (Whoopup Creek), cross over the Interstate, turn right on road 255 for 2 miles.

PROPERTY DESCRIPTION: 6.8+/- Acres
Survey is pending.

HOUSE & BUILDING DESCRIPTION: 1104 sq ft House, 2 bedrooms, 2 full baths, 3 rooms & 1 bath in basement, fridge, stove, washer & dryer stay w/house, propane forced air, 1,000 gallon Propane Tank, 24x24 attached garage, underground sprinklers, large irrigated garden, 36x94 Steel Shed w/36x24 heated Shop, 40x70 Quonset Building w/dirt floor, 24x30 2-car Garage, 25x70 Wood Shed w/ 1/2 being open faced, 9x10 Wood Shed w/electricity, 6,000 bushel Grain Bin, (4) 1400 bushel Grain Bins, set of corrals.

A title commitment has been ordered and will be available, at their request, to prospective buyers for inspection prior to sale day. The above may or may not be the proper legal description; it was taken from the Dawson County tax receipts. The above does describe the property to be sold.

Mineral Rights: No mineral rights transfer.

Water Rights: All water rights held will transfer.

Taxes: Taxes will be pro-rated from the day of closing.

Title Insurance: Standard owners' title insurance will be provided by the seller through First American Title Holding Company, 204 N Kendrick Ave, Suite 205, Glendive, MT (406)365-5482

Terms: Cash. 10% down sale day, the balance due at closing the week of July 14, 2014 at the offices of First American Title Holding Company, 204 N Kendrick Ave, Suite 205, Glendive, MT (406)365-5482

Buyer's Premium: A 2 % Buyer's premium will be added to the winning bid price to arrive at the total contract price paid by the purchaser.

Your bid is considered acceptance of the terms of this auction. If you, the Buyer fails to close, the down payment is non-refundable. If the Sellers fail to close, 100% of the down payment will be returned. At this time there is no known reason that the Sellers would not be able to close. All funds are held in the escrow account of First American Title Holding Company, 204 N Kendrick Ave, Suite 205, Glendive, MT (406)365-5482

FOR MORE INFORMATION CONTACT:

R-K Auction Company
www.r-kauction.com
Rick Kniepkamp
(406)485-2548 or (406)939-1632 cell

AUCTIONEER'S NOTE: If you are looking for a ranchette only 8 miles from Glendive, this is the place for you! There are several buildings and grain bins that Brad and Brian would be interested in renting. This is a "MUST SEE" property! **Rick**



Circle, Montana

Statewide Auction

(406) 485-2548

WE SELL & ADVERTISE ACROSS THE UNITED STATES

www.r-kauction.com

Rick Kniepkamp (406) 485-2548 or cell (406) 939-1632

All information is from sources deemed reliable, but is not guaranteed by the Sellers or the Auctioneers. Offering is subject to error, omission, and approval of purchase by owner. We urge independent verification of each and every item submitted to the satisfaction of any prospective buyer. It is every potential bidder/purchaser's sole responsibility to accomplish his or her due diligence in whatever manner he or she deems advisable. Announcements made sale day take precedence over any printed materials. The property sells "As is-Where is." R-K Statewide Auction Service and its auctioneers are acting solely as auctioneers for the Sellers.



Crops and Weeds Field Day at MSU Post Research Farm set for July 8

Submitted by Fabian D. Menalled

The annual crops and weeds field day will be held at Montana State University's Post Research Farm west of Bozeman on Tuesday July 8 from 8:30 a.m. to 3:30 p.m.

Attendees can receive Certified Crop Adviser CEU credits, commercial/

government pesticide recertification credits and private applicator pesticide recertification credits.

This is an opportunity for pest control advisors, farm managers, chemical company cooperators, students and the general public to learn about ongoing crop and weed research programs at MSU. Research and demonstration plots of weed and pathogen management techniques, pesticide application strategies, cropping systems, pulse crop production and spring wheat breeding will be open throughout the day with staff available to answer questions.

Speakers will include Jane Mangold, Fabian Menalled, Ed Davis, Erick Lehnhoff, and Erin Burns on weed management; Alan Dyer on cereal pathogens; Chengci Chen on pulse crop production; Kent McVay on crop rotations; Hilary Parkinson on pest identification; and Luther Talbert on spring wheat breeding.

Registration is free and we will provide refreshments, lunch, and handbook.

Please pre-register no later than June 2 by contacting Hilary Parkinson at (406) 994-6297 or via e-mail hilary.parkinson@montana.edu. You can also register at the Post Farm on July 8. The Post Farm is located six miles west of Bozeman on Highway 191.

For more information, please visit the MSU Cropland Weed Management Web site at <http://www.ipm.montana.edu/CropWeeds>.

Culbertson Frontier Days Rodeo June 20 & 21

Each spring finds Culbertson playing host to the Saddle Club's Frontier Days. With the help of the Chamber of Commerce, two full days of western hospitality and fun include rodeos in the Saddle Club's unique tiered rodeo grounds, a parade on Saturday, a street dance on Friday and Saturday and concessions on the grounds. Contact Luke Anderson at 406-790-0722 or Ken at 406-798-3712 for more information or to register for the rodeo.

Roundup WEB.COM

*Don't get
nickel &
dimed for
your online
news and
classifieds*

A FATHER'S DAY GIFT THAT KEEPS ON GIVING.

From May 1 – June 30, 2014, when you buy qualifying[†] Case IH products, receive a Case IH Reward Card*. It's our way of saying, "Happy Father's Day."

\$50 REWARD CARD OFFER: POWER EQUIPMENT

Receive a \$50 Reward Card* when you buy qualifying[†] Case IH-branded power equipment.



\$50 REWARD CARD OFFER: TOOLS & STORAGE

Receive a \$50 Reward Card* for every \$200 purchase of Case IH-branded tools or tool storage.



\$50 REWARD CARD OFFER: RADIO & OBSERVATION SYSTEMS

Receive a \$50 Reward Card* when you buy any qualifying[†] radio or observation system.



**Hurry, offers end June 30, 2014.
SEE US TODAY FOR MORE INFORMATION.**

* Case IH Reward Cards will be mailed to qualifying customers within 90 days after the promotion end date which is June 30, 2014. In order to redeem your Reward Card, you must complete the claim form at the "Reward Center" on partstore.caseih.com by July 31, 2014. Case IH Reward Cards may be used to purchase eligible CNH Industrial parts and related services and products only at any Case IH dealership that accepts the CNH Industrial Capital Commercial Revolving Account. Case IH Reward Cards are not refundable for cash, are not transferable, will not be replaced if lost, stolen or destroyed. Case IH Reward Cards may not be used toward prior purchases and may not be used to make any payments on existing debts or account balances. Program subject to change or cancellation without notice.

† For a list of qualifying purchases, see your local Case IH dealer or visit partstore.caseih.com.

©2014 CNH Industrial America LLC. All rights reserved. Case IH is a trademark registered in the United States and many other countries, owned by or licensed to CNH Industrial NV, its subsidiaries or affiliates. CNH Industrial Capital is a trademark in the United States and many other countries, owned by or licensed to CNH Industrial NV, its subsidiaries or affiliates. www.caseih.com

MRC



TRI-COUNTY IMPLEMENT, INC.
2429 W HOLLY STREET
SIDNEY, MT 592709213
406-488-4400



ED FARM LIQUIDATION AUCTION

SATURDAY, JUNE 14TH, 2014
10:00 A.M.

LOCATION: From Glendive, MT- Take Interstate 94 W for 6 miles, take Exit 204 (Whoopup Creek), cross over the Interstate, turn right on road 255 for 2 miles

OWNERS: Slade Inc • **FOR MORE INFORMATION:** 365-9674 home 939-4841 Allen
Lunch will be available

FARM EQUIPMENT

- Versatile 936 Tractor, 12-speed, power shift, 3 pt, 4-hydraulics, duals, 4984 hours
- Case IH 7130 Tractor, 3 pt, PTO, duals, 6149 hours
- Case IH 7110 Tractor, 3 pt, Dual PTO, 8398 hours
- Intl 1486 Tractor, 3 pt, Dual PTO, duals, 9109 hours
- Farmall IH 656 Tractor, 3 pt, PTO, 4863 hours
- McCormick Farmall Super MTA Tractor, Dual Loader & Heavy Duty Front End
- Intl 480 Disc, 21'
- JD 640 Disc, 20'
- JD 36' Tool Bar
- Intl 140 Spinner Plow, 3 pt, 4-bottom
- Ace 5-bottom Spinner Plow, 3 pt
- JD 610 Chisel Plow, 27', double wing lift
- Harrows for JD Chisel Plow
- Intl 24' Harrows, 3 pt
- Unverferth Perfecta 26' Bar, 3 pt, double wing lift
- Ultra Mulcher 43 w/crowfoot wheels-25'
- Arts Way 2400 Leveler, 24', 3 pt
- Eversman 10' Leveler
- Arts Way 786 A Defoliator, 6-row, 24" steerable axle orbital motors
- Intl 669 Bean Cutter, 6-row
- Speedy 8-row 30" Bean Cutter
- IH 800 8-row 30" Planter, 3 pt
- IH 800 12-row 24" Planter, 3 pt
- IH Vibrashank, 20', 3 pt
- Elmers 8-row 30" spacing Cultivator, 3 pt
- Elmers 12-row 24" spacing Cultivator, 3 pt
- Field 8' Cultivator, 3 pt
- Westgo 8-row 30" Bar, 3 pt
- (3) small Cultivating Bars, 3 pt
- Rougher Bar, 6-row
- Diker, 3 pt
- Ditchers
- King Ditch Closer
- Crust Buster 6-wheels
- M&W 21' Rotary Hoe, 3 pt
- J D Rodweeder, 3 pt
- Orthman Rodweeder
- Cutaway Discs
- Weed Thinner Parts



COMBINE, TRUCKS, PICKUPS & SPRAYER

- Case IH 1688 Combine, AFX Rotor, 2675 hours
- Case IH 25' Flex Head w/finger reel, model 1020
- IH 810 20' Bean Header w/ Wren pickup
- IH 810 13 ft header w/ sund pickup
- Case IH 1010 Corn Head, 6-row 30" Wren Pickup

- Elmers 30' Header Trailer
- 1989 Ford L9000 diesel twin screw Truck, 9-speed, 20' aluminum box
- 1975 Ford 880 twin screw Truck, 13-speed, 22' box, 88,000 miles
- 1974 Chevy C65 Truck, tag axle, 16' box, 28,750 miles
- 1996 Ford F150 XLT Pickup, auto, 4x4,

- 107,000 miles
- 1995 Ford F150 XL Pickup, auto, 2x4, 156,000 miles
- 1980 Ford F150 Pickup, 4-speed, 2x4, 6-cylinder
- H&S 12-row 24" Sprayer, 3 pt
- Suzuki 4x4 (not running)



BINS, AUGERS, & IRRIGATION PIPE, & MISC

- (2) 18,000 bushel double ringed Bin Circles w/tarps
- 12,000 bushel single ringed Bin Circle w/tarp
- (2) 10,000 bushel single ringed Bin Circles w/tarps
- E-Kay Bin Sweep
- Sakundiak Auger, HD7-1200 w/Kohler motor
- Wheatheart 10x71 Swing away Auger
- (50) 10'x30' Aluminum Gated Pipe
- (600) Aluminum Siphon

- Tubes (various sizes 1 1/2"-3")
- Irrigation Socks
- Culvert (2'x20' long)
- Bean Knives
- Cultivator Sweeps
- Plow Parts
- Electro Magic Dirt Buster
- Power Washer
- Finco 25 gallon Sprayer
- B&S 9 hp Motor w/Pacer Pump

AGATES & HOUSEHOLD

- (6) 5 gallon buckets of Agates
- Antique Vanity w/round mirror
- Antique Sewing Machine w/table
- Antique General Chef Stove
- Pictures
- Bose Sound System
- Entertainment Center
- Computer Armoire, 6x3x2
- Dresser w/mirror

- (2) Wood Desks
- Book Shelf
- Bed Frames
- Dog Kennel
- (3) Wood Bar Stools
- (2) 2-dr Metal Cabinets
- Treadmill 345 Proform, space saver
- Telescope
- Christmas Tree
- Ironing Board
- Many Misc Knick Knacks

SOAPS, LOOFAHS & SUPPLIES

- (6) Boxes -3# gold Tins
- (11) Boxes 14 oz gold Tins
- Assorted Boxes of Caviar Tins
- 2 1/2 # Plastic Tubs w/lids
- 200+ Luffas/Loofahs
- 200+ Assorted Bath Salts, Gift Sets, Salts
- Assorted Fragrances & Colors for Soaps & Salts

- Soap Molds
- Blocks of Melt & Pour Base
- Shrink Wrap Machine w/large roll of Shrink Wrap
- (2) Long Counter Tops
- (4) 2-drawer Files
- Wood Display Boxes
- Mixing Bowls
- Food Processor
- Microwave

TIRES

- Truck Tires
- Single Wheel Front-end Tires (many)
- Spare Auto Wheels, Hub Caps
- (2) 11.2/38 Tires
- (2) 20.8/38 Tractor Tires, duals
- (2) bolt-on 420/80 R 46 duals

- (2) snap-on 420/80 R 46 duals
- (2) bolt-on 16.9/14-38 duals
- (2) snap-on 16.9/38 duals
- (2) 16.9/38 Tires
- (2) bolt-on 13.6/38 Tires
- MR-14/15 Radial Tube
- (2) 10.00 R 20 Radial Tube

GARDEN TRACTOR, TANKS, SHOP & MISC

- Deutz Allis T811 Riding Garden Tractor, 11 hp w/lawn mower & tiller
- MTD Gold 13 1/2 hp Lawn Mower w/bagger
- Banjo Grass Catcher
- (3) 1000 gallon Gas Tanks w/pumps
- 500 gallon Gas Tank w/pump
- Propane Tank on 3 pt Bar (weed burner)
- Propane Tanks, 20# & 100#
- 1050 gallon Water Tank
- Anhydrous Ammonia Tank
- Winpower PTO Generator
- Pickup Toolbox
- Tractor Tool Boxes
- 20th Century AC/DC Arc Welder
- Welding Helmet
- Jumper Cables
- Aluminum Ladder, 6'
- Airlift Jack
- Shop Vac, 5 hp
- (2) High Lift Jacks
- Daytona Body Repair Jack, 4-ton
- Blackhawk Jack, 4-ton
- Makita Cordless Drill
- Makita Skil Saw
- Prairie 80 gallon Air Compressor
- Jet Drill Press
- Continental 30 ton hydraulic Press
- Lesota 9" Grinder
- Clark 10" Table Saw
- Jorgenson Saw

- Kleen-o Filt (air filter cleaner)
- Boxes of various Roller Chain
- Ace Hanson Tap & Die Set
- Napa Bearing Race & Seal Set
- Napa Bushing Driver Set
- Napa 3/4 Impact Wrench
- Thorsen 3/4 Ratchet Tool Set
- Torque Wrenches
- Crescent Wrenches
- Wrench Set (up to 2")
- Pullers, Grease Guns
- Pipe Cutter
- Bolt Cutters
- Scoop Shovels
- Chisels, Punches
- Pliers, Vice Grips
- Pins, Bolts, Nuts
- Pry Bars
- Log Chain
- Shop Light
- Grant Battery Charger
- (2) Pail Feeders
- Numerous Shop Tools

AUCTIONEER'S NOTE:

Allen and Amy have decided to retire from farming and offer their full line of machinery at auction. Most of the big equipment has been kept inside and is field ready. Amy had a business making luffas soaps and will be offering that at auction, as well. We hope to see you on JUNE 14th!
Rick



RK
Rick Kniepkamp



Circle, Montana

Statewide Auction

(406) 485-2548

WE SELL & ADVERTISE ACROSS THE UNITED STATES
www.r-kauction.com

Rick Kniepkamp (406) 485-2548 or cell (406) 939-1632

All information is from sources deemed reliable, but is not guaranteed by the Sellers or the Auctioneers. Offering is subject to error, omission, and approval of purchase by owner. We urge independent verification of each and every item submitted to the satisfaction of any prospective buyer. It is every potential bidder/purchaser's sole responsibility to accomplish his or her due diligence in whatever manner he or she deems advisable. Announcements made sale day take precedence over any printed materials. The items sell "As is-Where is." R-K Statewide Auction Service and its auctioneers are acting solely as auctioneers for the Sellers.



Watford City, North Dakota

YES WE ARE OPEN

Submitted by Doug Bolken

In Watford City, we're pretty well-known for the energy industry, but did you know we are still a world class destination? Whether you are hoping to work, stay or play, Watford City area offers everything you need in terms of activities, comfort, and amenities.

On your trip, you will learn a lot about the growth of our region. You'll see the expansion of our roads, the busy movements of the energy industry, and an incredible pace of housing and commercial construction.

You'll also rediscover the spectacular outdoor and historical activities our region has long offered. Take a step off Highways 85 and 23 and you'll find vast untouched wilderness in the Theodore Roosevelt National Park and the surrounding grasslands. Last summer, a group of environmental scientists from Canada traveled more than 100 miles by foot throughout the national park and surrounding region, finding little sign of man or industry besides a scattering of farms and ranches.

In addition to the magnificent Theodore Roosevelt National Park and the northern trailhead of the Maah-Daah-Hey Trail, Watford City is located in the heart of western North Dakota's premier vacation attractions including the Fort Union Trading Post National Historic Site and the Missouri-Yellowstone Confluence Interpretive Center; the east is the Mandan-Hidatsa-Arikara Tribal Museum and the Earth Lodge Village at Four Bears; and of course the boating and fishing activities offered by beautiful Lake Sakakawea.

At night, you'll be well taken care of in Watford City. The energy industry has driven the addition of many new hotels and you'll have you're your pick of amenities between the seven hotels in Watford City alone. While you'll have no problem getting a room, you will be well nourished at the city's many food and beverage establishments.

The best part – Our region has a busy summer coming up with a number of community celebrations.

We kick off the summer June 26 through 29 with Watford City's Centennial Celebration, a festival that will include four straight days of concerts, arts and crafts, children's activities, golf and much more. You can even time your trip with a stop in Tioga the Wednesday before it all starts in order to catch the Million Barrel Party, celebrating the achievement of 1 million barrels of oil production per day within North Dakota.

If you can't make this trip, consider coming for our many other events, such as the hometown Fourth of July Celebration in Arnegard, the McKenzie County Fair, the renowned Cliff Hanger 4x4 Club Rendezvous which includes competitors from across American and Canada, and the Best of the West Ribfest where you'll find companies and groups competing against one another.

So come out west this summer. Check out what we offer in Watford or take a few more days to enjoy everything western North Dakota offers with stops in Medora, Dickinson, and Williston too. Learn more about the growth of our communities with your own eyes and take in a relaxing weekend enjoying our many amenities and festivities of new and old.

For more information on the Watford City Centennial go to www.watfordcitycentennial.com



Radio Stars will perform at the Watford City Centennial on Saturday, June 28th, 4:30 PM & Sunday, June 29th, 10:00 AM



Tigirlily will be at the Watford City Centennial on Saturday, June 28th, 7:00 PM.

WEST PLAINS INC, BORDER PLAINS EQUIPMENT, & NORTHERN PLAINS EQUIPMENT

Used Tractor and Hay Equipment Sale Over 100 Units to Choose From No Reasonable Offer Refused

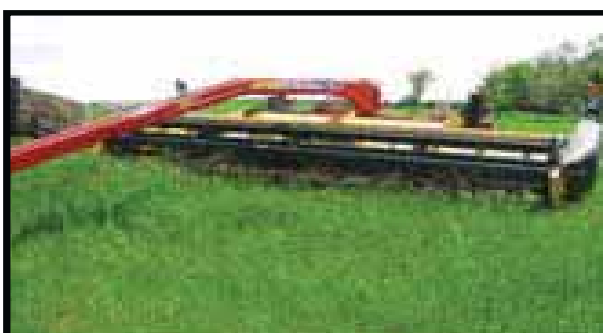
June 1st to June 30th 2014

Go to our website and click on "Special Sale Items" to see a full listing of all the units or call one of our Sales Representatives today.

borderplains.com westplains.com npend.com



'12 CIH Maxxum 140, 256 Hours, WUT716
\$90,000



'09 NH 1475, 18' Mower Conditioner, 32170W
\$18,000



'07 JD 568 Round Baler, GHAY42
\$23,000



'03 NH BR780 Round Baler, 38141W
\$12,500



'09 NH H7150, 18' Mower Conditioner, WUY399
\$27,000



'09 NH TV6070, 1390 Hours, 16166W
\$104,500

Border Plains Equipment
Stanley, ND • 701-628-2950
Williston, ND • 701-774-0957
Glasgow, MT • 406-228-9341
www.borderplains.com

West Plains Inc
Beach, ND • 701-872-4154
Bowman, ND • 701-523-3296
Dickinson, ND • 701-483-8741
Hettinger, ND • 701-567-4505
www.westplains.com

**Northern Plains
Equipment**
Mandan, ND • 701-663-9864
www.npend.com



Wolf Point Wild Horse Stampede Celebrating Their 91st Year

Marvin Brookman Stadium Wolf Point, Montana

By Tie Shank

The Wolf Point Wild Horse Stampede will be celebrating their 91st year at the Marvin Brookman Stadium in Wolf Point Montana July 10th – 12th.

Wolf Point Wild Horse Stampede is a three-day event including a PRCA sanctioned rodeo that brings the best cowboys to town. PRCA RAM Rodeo action will begin each evening at 7 p.m.

Events and festivities set for the 91st weekend celebration include KVCK Country Showdown and KVCK Korral talent show, class reunions, “Unsung He-

roes” Parade, carnival, the famous Catholic Hamburger Stand on Main Street, Tough Enough to Wear Pink Night, Stampede Roundup Golf Tournament, Street Dance, Wild Horse Race and Calcutta, Human Stampede, Museum Pancake Breakfast, Kids Stick Horse Rodeo, attendance by Miss Rodeo Montana, Cowboy Church, Art in the Park, open Team Roping, Hall Brothers “Raminator” monster truck feature attraction and more.

The Wolf Point Wild Horse Stampede was chosen by Travel Montana as one of “Montana’s 10 Best Parties!” This event will be held at the Marvin Brookman Stadium, which is located 0.25 mile east of Main Street.

Tickets go on sale June 16th by calling (406) 653-1770 or stop in at the Main Street ticket booth. For more information contact The Wolf Point Chamber of Commerce & Agriculture at (406) 653-2012, wolfpointchamber@gmail.com or visit www.wolfpointchamber.com

Wolf Point Wild Horse Stampede Events & Weekend Activities July 2014

July 9 – Wednesday - 5 PM Carnival Opens, 7 PM Country Showdown and KVCK Korral

July 10 – Thursday - 9 AM PRCA Rodeo Slack, 9 – 4 PM Stampede Roundup, Golf Tournament at Airport Golf Course, 11 AM Catholic Hamburger Stand Opens, 5 PM Carnival Opens, 7 PM Wild Horse Stampede Rodeo – Tough Enough to Wear Pink - Marvin Brookman Stadium (Gates open at 5:30 PM)

9 PM Street Dance – Main Street

July 11 – Friday - 8 AM PRCA Rodeo Slack followed by MRRC Open Team Roping, 1 PM “Unsung Heroes” Parade – Main Street, 5 PM Carnival Opens, 7 PM Wild Horse Stampede Rodeo – Marvin Brookman Stadium (Gates open at 5:30 PM)

July 12 – Saturday - 7 AM Human Stampede Run/Walk - Sherman Park, 7 – 11 AM Wolf Point Museum Benefit Pancake Breakfast at Museum on Hwy 2, 9:30 AM Cowboy Church – Fireman’s Park, 10 – 5 PM Art in the Park – Sherman Park, 1 PM “Unsung Heroes” Parade – Main Street, 2:30 PM “Stick Horse Rodeo” by Miss Rodeo Montana, 5 PM Carnival Opens, 7 PM Wild Horse Stampede Rodeo – Marvin Brookman Stadium

(Gates open at 5:30 PM)

July 13 – Sunday - 1 PM Outback 4 D Barrel Race – Marvin Brookman Stadium, 3 PM Catholic Hamburger Stand Closes



34.2+/- ACRES RICHLAND COUNTY LAND AUCTION

WEDNESDAY, JUNE 18, 2014
6:00 P.M.

LOCATION: From Sidney, MT – the intersection of HWY 16 and Hwy 200, go on Hwy 16 South 6.8 miles toward Glendive. **OWNER:** BUCK DABILL
FOR MORE INFORMATION: RICK KNIIEPKAMP 406-485-2548 or 406-939-1632

LEGAL DESCRIPTION:

34.2+/- ACRES A portion of the NW4 of Section 11, Township 21N, Range 58E Richland County Montana (of the 34.2 Acres, 4.8 Acres lie along the railroad track)
The Legal Description is too long to print.
This property was in the process of being subdivided. There is an approved sub-division with a preliminary plat. There is a Preliminary Subdivision Plat with 15 lots, ranging between 1-2 acres each. This Subdivision Plat can be found on our website.

A title commitment has been ordered and will be available, at their request, to prospective buyers for inspection prior to sale day. The above may or may not be the proper legal description; it was taken from the Richland County Tax Receipts.

WATER RIGHTS:

Any water rights held will transfer.

MINERAL RIGHTS:

No mineral rights will transfer.

TAXES:

Taxes will be pro-rated from the day of closing.

TITLE INSURANCE:

Standard owner's title insurance will be provided by the seller through Richland County Title, 1050 S Central, Sidney, MT 406-433-8584

TERMS:

Cash. 10% down sale day, the balance due at closing approximately 30 days from sale date at the office of Richland County Title, 1050 S Central, Sidney, MT 406-433-8584

BUYERS PREMIUM: A 2 % Buyers premium will be added to the winning bid price to arrive at the total contract price paid by the purchaser.

Your bid is considered acceptance of the terms of this auction. If you, the Buyer fails to close, the down payment is non-refundable. If the Sellers fail to close, 100% of the down payment will be returned. At this time, there is no known reason that the Sellers would not be able to close. All funds are held in the escrow account of Richland County Title, 1050 S Central, Sidney, MT 406-433-8584

All information is from sources deemed reliable, but is not guaranteed by the Sellers or the Auctioneers. Offering is subject to error, omission, and approval of purchase by owner. We urge independent verification of each and every item submitted to the satisfaction of any prospective buyer. It is every potential bidder/purchaser's sole responsibility to accomplish his or her due diligence in whatever manner he or she deems advisable. Announcements made sale day take precedence over any printed materials. The property sells "As is-Where is."

R-K Statewide Auction Service and its auctioneers are acting solely as auctioneers for the Sellers.

FOR MORE INFORMATION CONTACT:

R-K Auction Company www.r-kauction.com
Rick Kniepkamp (406)485-2548 or (406)939-1632 cell
Phone bidding will be accepted with pre-approval.

AUCTIONEER'S NOTE:

This is a PRIME piece of property lying along Highway 16. It is only 6.8 miles from Sidney, MT! If someone is looking for a small subdivision project, much of the work has already been done. Please call for more information. See you WEDNESDAY, June 18th!
Rick



RK
Rick Kniepkamp



Circle, Montana **Statewide Auction** (406) 485-2548

WE SELL & ADVERTISE ACROSS THE UNITED STATES

www.r-kauction.com

Rick Kniepkamp (406) 485-2548 or cell (406) 939-1632

All information is from sources deemed reliable, but is not guaranteed by the Sellers or the Auctioneers. Offering is subject to error, omission, and approval of purchase by owner. We urge independent verification of each and every item submitted to the satisfaction of any prospective buyer. It is every potential bidder/purchaser's sole responsibility to accomplish his or her due diligence in whatever manner he or she deems advisable. Announcements made sale day take precedence over any printed materials. The items sell "As is-Where is."

R-K Statewide Auction Service and its auctioneers are acting solely as auctioneers for the Sellers.

Buy Local Products & Services In The MonDak Area



Border Steel & Recycling



Bret, Bill and Brady Smelser.

The Smelser family is delighted to bring their family owned Border Steel & Recycling business back to Sidney. They opened in December 2011 at 35002 CR 123.

Rex Smelser helped start Pacific Hide & Fur in 1947 or 48. He retired in the 60s and his son Bill took over as manager.

In 1985 Bill was forced out of Pacific, due to his hearing. He and his son Bret both left and started Border Steel in Glendive. Bret's son Brady has worked full time since 2004 and is a partner in the business. Other shares are owned by Bret's sister Cindy Eleson, and his brother Todd's survivors. In the spring of '06, Border Steel opened its facility in Plentywood, expanded to Williston in '07 and came home to Sidney in December 2011.

They are truly happy to be back in Sidney. According to Bret and Brady, they "do it all". From new steel, aluminum and stainless to all your ag and construction and recycling needs, Border Steel & Recycling can take care of you. They also handle new and used iron. "We're adding to what we already had to offer from our other locations and growing on that," Brady said. He added, "This gives us the opportunity to better serve our loyal customers and to build new ones. Competition is healthy, the winners will be public-the consumers." Border Steel & Recycling can be reached at 406-433-7737 or toll free at 1-855-810-2995.

Customer Service is Our #1 Priority

Construction Materials • New Steel • Aluminum & Stainless

Sidney	Glendive	Williston	Plentywood
35002 CR 123 406-433-7737 1-855-810-2995	2703 W. Towne St. 1-800-423-5219	13896 W. Front St. 1-800-820-5493	Hwy 16 East 406-765-2624

Monthly Magazine

**111 West Main • Sidney, MT
433-3306 • Fax: 433-4114**

Every Time. Every Day.

• Service • Parts • Support • 24/7

5151 Midland Rd. Billings, MT 59101 P: 800.332.7788	1057 Red River Rd. Sidney, MT 59270 P: 406.433.1135
---	---

We Buy...Scrap

- Aluminum
- Copper
- Brass • Iron
- Vehicles

Sidney, MT
(800) 548-6364 • (406) 433-1301
www.pacific-steel.com

See us for Fencing Materials, Gates & Panels

• LLC •

FULL SERVICE AGRONOMY CENTER

Williston • Bethold • Carpio • Donnybrook • Ross • Parshall • New Town

+Fertilizer+Chemicals+Crop Consulting
+Custom Application+Soil Testing

701-572-3227
Call Jason Hanig, Kevin Geltel or Lance Skor
1109 6th Ave. Williston, ND

PRAIRIE PACKING & MEATS CO.

Corner of Hwy 1804 & East Bypass in Williston
Just 6 blocks down the new paved road!

- ◆ USDA Inspected Facility
- ◆ Local Beef & Pork 1/2s, 1/4s & Bundles
- ◆ Custom Slaughter & Processing
- ◆ Choice Steaks, Roasts, Chops & Ground Beef
- ◆ Wholesale to Food Service Businesses

David Slais
Plant Mgr.

701-577-6788 • M-F: 7-530 • Sat: 9-Noon • Major Credit Cards Welcome

We Carry:

- New Steel • Aluminum • Stainless Steel
- Misc. Piano Hinges, Weld On Hinges, Latches

Located Just North of Walmart
4324 4th Ave. W., Williston
701-774-2231

We Have:

- Press Brake
- Shear
- Plasma Table
- Auto Feed Band Saw
- Piranha Iron Worker

From the field to the table...our quality sugar is grown and processed in the MonDak area.

Always available at your favorite grocery outlet.

Sidney Sugars INCORPORATED

Richland County Centennial Celebration June 13-15

Rob Quist and Great Northern will
entertain at 8 p.m. – Friday, June 13



Sawyer Brown will perform June 14. Pictured are Joe Smyth, Gregg "Hobie" Hubbard, Mark Miller, Shayne Hill and Jim Scholten

Richland County will celebrate its 100th birthday with a huge party June 13-15. Enjoy free concerts by Rob Quist & Great Northern Friday night, and Sawyer Brown Saturday night, plus free BBQs each night. Airplane ping pong ball drops each afternoon will provide excitement and prizes to those lucky enough to pick up a specially marked ball. Local and children's entertainment will please all ages, while vendors will satisfy thirst and hunger pangs. Each evening, Dan Hunthausen & the Train Wrecks will provide entertainment in the beer garden. All take place at the Richland County Fairgrounds.

Self-guided community/historical tours will take place both days and the Sidney-Richland County Library will provide History tours.

The Sidney Kiwanis Club will host its Pie Social Friday from 11 am - 1 pm at the courthouse and kids of all ages are encouraged to take part in the Sidney-Richland

County Library Children's Street Fair.

Saturday starts off with the Centennial Parade at 10a.m. Please submit your entry to the Sidney Chamber of Commerce or go to the centennial website.

The Senior Coalition is sponsoring a Color Run at noon starting at Peterson Park. There is a registration fee of \$25 which will go to the Coalition for their activities.

Activities at the Fairgrounds Saturday afternoon include a Pedal Tractor Pull presented by Sidney FFA Alumni. Registration starts at 1 with the pull beginning at 2. Past and present county officials will be honored, as well as the Centennial Farms. There will also be an FFA Time Capsule presentation.

Sunday starts off with the centennial breakfast and church service, followed by the finale of cake and a balloon release at the Richland County Fair Event Center.

Farmers & Ranchers are invited to join the fun at the **Ag Appreciation Golf Tournament**

Free for area farmers & Ranchers! (Adults Only)

Monday, July 14th, 2014 At The Sidney Country Club
Registration 7:30-8:30am • Golfing starts at 9am



☐ **Yes, I'd like to play in the golf tournament.** *Please register no later than June 30th. Limited number of participants. Must be 21 or older.*

Name _____ **Phone** _____

Return to the Sidney Chamber office at 909 S. Central, Sidney, MT 59270 or Call 433-1916. Golfing is free for producers, businesses must sponsor a team to play. Adults only. Please wear proper footwear. Boots are not permitted on the course. Team makeup will be assigned by Ag Committee and Golf Course Pro. Sponsored by the Ag Committee of the Sidney Area Chamber of Commerce & Agriculture.



FATHER'S DAY SPECIALS FROM

AUTO PARTS

OFFERS GOOD JUNE 1-30, 2014

79⁹⁹

Black & Decker 68pc. 20-Volt Lithium Drill/Driver & Project Set with Case
#LDX120PK



13⁹⁹

Shell Rotella T Heavy-Duty Diesel Engine Oil
(1 gal. 15W40)
#550019913
(1 gal. 15W30)
#550019920



Save up to 58%!

2³⁹

CRC Brakleen Non-Chlorinated Brake Parts Cleaner
(14oz.) #095084
CRC Brakleen Chlorinated
(19oz.) #091314

2⁶⁹

Your Choice! 29⁹⁹

7pc. Gear Wrench Ratcheting Combination Wrench Set
(SAE) #9317 or
(Metric) #9417

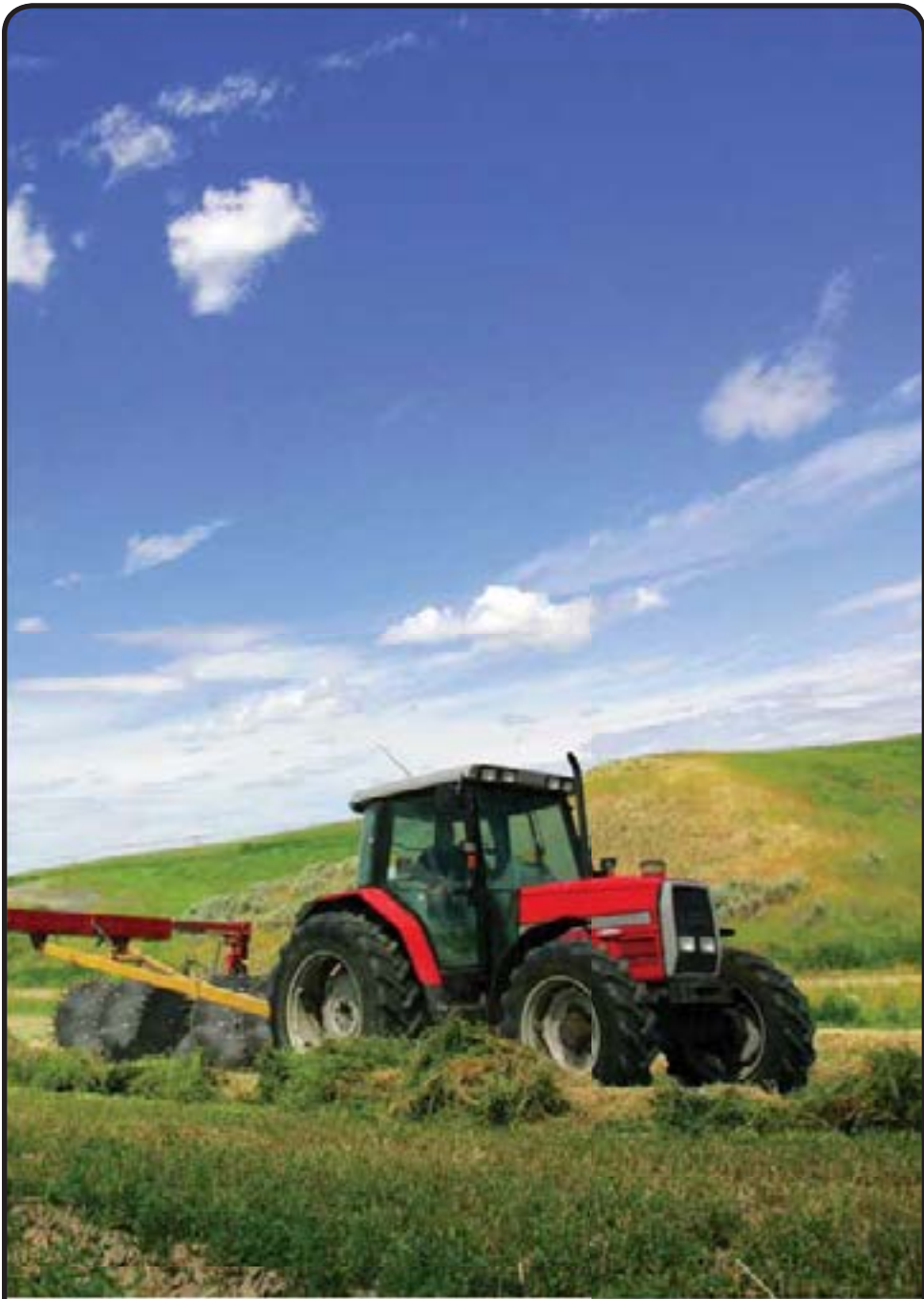


OR

Black & Decker LED Snake Work Light
#BDCF45L



109 2nd Ave NE, Sidney, MT | (406) 433-6430 | Mon-Fri: 7:30am - 5:30pm | Sat: 7:30am - 2pm

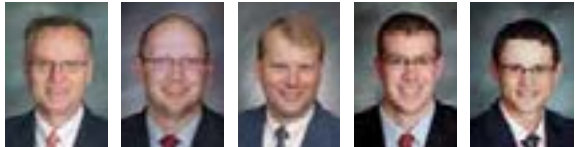


Helping you grow

As you spray, fence or up up hay, we're here to help you get the equipment, facilities and operating cash you need to grow.

Visit with our ag lending professionals to help you build your operation.

Give us a call: we'll provide peace of mind to keep you growing in today's farm and ranch economy.



KURT NIELSON DUSTY BERWICK ROB RUDE AARON GRANLEY DUSTIN FROELICH

774-4100 • www.asbt.com
223 Main Street • Williston, North Dakota



WHATEVER YOUR FINANCIAL GOALS ...

We'll help you reach them.

Thrivent Financial offers a full range of products and services to help you achieve financial security, including:

- Life insurance
- Annuities
- Mutual funds
- Retirement options
- Health insurance

We'll create a financial strategy that reflects your goals and values.



Harvey Senn
CLTC®, FIC, LUTCF
Financial Associate
406-433-6143

1050 S Central Ave.
Sidney, MT, 59270
877-433-6143



Ron Gebhardt
CLTC®, FIC
Financial Associate
406-433-5287

Certified Financial Planner Board of Standards Inc. owns the certification marks CFP® CERTIFIED FINANCIAL PLANNER™ and federally registered CFP (with flame design) in the U.S., which it awards to individuals who successfully complete CFP Board's initial and ongoing certification requirements.

Insurance products issued or offered by Thrivent Financial, the marketing name for Thrivent Financial for Lutherans, Appleton, WI. Not all products are available in all states. Securities and investment advisory services are offered through Thrivent Investment Management Inc., 625 Fourth Ave. S., Minneapolis, MN 55415, a FINRA and SIPC member and a wholly owned subsidiary of Thrivent. Thrivent Financial representatives are registered representatives of Thrivent Investment Management Inc. They are also licensed insurance agents/producers of Thrivent.

For additional important information, visit Thrivent.com/disclosures.

Van Hooks Arena Hosts Kerry Kuhn Horsemanship Clinic

(L-R) Randy Lander with his hafling horse, brothers Kory Kuhn and Kerry Kuhn from Kansas that run the horse clinic.



By Tie Shank

Van Hooks Arena hosted two sold out Kerry Kuhn Horsemanship Clinics, May 19 – 23 and May 24- 25.

Kerry Kuhn holds group clinics several times throughout the year at locations around the country. In order to cover more topics as progress and interest allows, each clinic group is limited to 12 riders and their horses. The #1 goal in each clinic is to develop a positive, willing attitude in both horse and rider without worrying about making mistakes. Riders will have an opportunity to learn new concepts and to see how others approach and resolve problems.

Born in Medicine Lodge, KS in 1975, Kuhn had an immediate love for horses. At the age of 12, Kuhn started his first two year old colt with the help of his grandfather, Dale Lukens. Growing up, he spent many days working horses and gathering cattle for local ranches with his grandfather. His passion for horses and training started at a young age, motivating him to learn as much as he could about communicating with horses. In high school, Kuhn competed in rodeo as a calf, team and steer roper. He

also spent several years training young thoroughbreds at a local racetrack.

Since the mid 90s, Kuhn has held horsemanship demonstrations and clinics all across the United States and Canada. His longtime dream of having a weekly TV series came true in January 2013 when his first episode of "Ridin' Horses with Kerry Kuhn" aired.

Kuhn comments on his website, "I have spent my whole life working with horses. As I look back on all the horses I have ridden since I was a kid, each one was a stepping stone for me. I'm sure I messed more of them up in the beginning than I helped, but they all helped me see more of what I was missing. This TV series is a wonderful tool for me to share what I have learned over the years, and help people see that horsemanship can be as easy as you let it be."

If you missed out on either of these two clinics, you may still be in luck. Kuhn is offering his Horsemanship Clinic in Tioga, ND August 15-17. To register, call Jody Bergstrom (701) 216-0115.



Tandra Klein with her draft horse at the clinic.



Nancy Van Hook participates with her horse Grace at the clinic.

“LASSO SOME FUN”

McKenzie County Fair • Thursday-Saturday, July 10-12 • Watford City, ND



General Admission:\$5 Button
Demo Derby/NDRA Rodeo:\$10 Adult, \$5 Ages 6-13,
 Under 6 is Free
Youth Rodeo:Free For All Attendees

Entertainment Highlights

.....
 : Carnival & Funtastic Kid Zone Thurs–Sat, July 10-12 • Draft Horse Competition Thurs, July 10 :

Wednesday, July 9

10am.....4-H Static Exhibit. Horse & Small Animal
 interview judging
 11am - 2pmEntry of Open Class Exhibits
 2-4pmEntry of ALL 4-H Livestock & Ultrasound Steers
 6-8pmEntry of Open Class Exhibits

Thursday, July 10

11am.....Curly's Funtastic Kid Zone Opens
 1-4pmJudging of Open Class Exhibits
 4pmFair Parade-Main Street

5:30pm Free Beef Barbecue

Friday, July 11

9am.....Commercial Exhibits Open
 2pm4-H Livestock Sale
 6pmDemolition Derby
 9pmBand “The Farthest Edge”

Saturday, July 12

9am.....Youth Rodeo
 1 & 6pm..... NDRA Rodeo Slack & Rodeo
 11:30am.....Face Painting & Bean Bag Toss
 3pm Lil' Buckaroo Rodeo
 9pmK-Hook



Last Year's Demo Derby



horizonresources

Solutions for your success.

Solutions for your success.



**Horizon Resources offers a full line of Crop Protection
 Products you need for a successful growing season.**

Williston, ND

www.horizonresources.coop

701.572.8354 / 866.572.8354

Wildrose, ND

701.539.2272

Zahl, ND

701.694.4111

Culbertson, MT

406.787.6606

Fairview, MT

701.844.5775

Savage, MT

406.776.2489

Prairie Fare: How Do You Define These Food and Agriculture Terms?

As a late-night comedian famously showed with his “person on the street” interviews, people do not necessarily know what “gluten” is.

By Julie Garden-Robinson, Food and Nutrition Specialist
NDSU Extension Service

I overheard an interesting conversation the other day. I don’t make it a practice of eavesdropping, but they were talking rather loudly nearby. My ears perked when the topic moved to food.

“I’m going gluten-free because I need to lose some weight,” one of them said.

“I gained weight when I went gluten-free,” the other noted.

“Really?” she replied with surprise.

I wanted to jump in and agree that gluten-free isn’t necessarily a weight-loss diet, but I ate my breakfast and read the newspaper.

As a late-night comedian famously showed with his “person on the street” interviews, people do not necessarily know what “gluten” is. It’s a protein found in wheat, barley and rye. For some people, it promotes a response from their immune systems.

People with celiac disease need to eliminate gluten from their diets to avoid damaging their small intestines. If the intestine is damaged, absorption of nutrients from other foods may be affected and many body systems can be damaged.

However, most of us are just fine eating gluten-containing foods. Be sure to visit with a health-care provider if you have concerns, though. The Celiac Disease Foundation at <http://celiac.org> has more information.

I wonder if the average person on the street would know the definitions of other specialized, sometimes confusing, terms associated with foods. Recently, I spent some time in California. One day I was going to order fruit, eggs, toast and coffee.

The restaurant menu featured terms such as “locally and sustainably produced,” “free range” and “fair-trade certified” associated with my menu choices. Could you define all these words?

Try this “quiz” about terms associated with food and food production. Here is your “word bank”: conventional, local food, organic, fair-trade certified, free range, natural and sustainable. Granted, some of these descriptions are legal terms from government sources while others have acquired definitions from common use.

This term refers to livestock raised in the open where they can roam. The U.S. Department of Agriculture regulates the use of this term for poultry.

Using traditional agricultural practices, growers may use man-made fertilizers or pesticides in this type of agricultural production.

Although a precise definition is not available, this word refers to food additives and foods that have no man-made ingredients. The use of this term is regulated when it is used on fresh meat and poultry labels.

A food product that complies with environmental and labor principles by a specific organization can carry a logo if the producer is licensed to use it.

This term means that the food has been grown in soil that has remained free of man-made pesticides or fertilizers for a specific length of time. The producers can be certified after they have met strict compliance guidelines.

Food with this designation is produced within a fairly close geographic location. Although the term does not have a precise definition, half of people surveyed a few years ago thought the food was produced within 100 miles of their homes.

According to the U.S. Department of Agriculture, this term refers to “an integrated system of plant and animal production practices that meet America’s need for food and fiber and enhance the natural resources that food growing depends upon.”

Here is the key: 1) free range; 2) conventional; 3) natural; 4) fair-trade certified; 5) organic; 6) local food; 7) sustainable.

You do not need acres of land to grow some food for your household. Some of

my “local food” will come from my backyard garden if the weather is agreeable this year. I will try to use sustainable practices and keep my food “natural” in my kitchen. Farmers markets and co-ops are other ways to enjoy locally produced foods.

Try gardening this year. When beginning a gardening project, consider the space and time you have available. Do you have a flower bed that could become a “vegetable bed?” Lettuce and radishes grow fairly quickly. String beans also pop up quickly and are fun for kids to harvest. How about a tomato plant in a large pot on your deck or some fresh herbs in a window box?

The NDSU Extension Service has many resources at <http://www.ag.ndsu.edu/horticulture> to help you learn how to grow your own food. To learn about square-foot and container gardening, see “Gardening Delights for All” at <http://www.ag.ndsu.edu/pubs/plantsci/hortcrop/h1600.pdf>.

Visit with your Extension agent/assistant to learn about classes, handouts, and helpful videos and websites. Later in the season, remember to visit the NDSU Extension Service food and nutrition website at <http://www.ag.ndsu.edu/food> for directions about preserving food.

By the end of summer, you could use your own locally grown food to prepare this recipe from Texas AgriLife Extension Service.



Stir-fry Veggies and Beef

- 1/2 tsp. ground ginger
- 1/8 tsp. garlic powder
- 1 tsp. soy sauce
- 1/3 c. water
- 1 c. sliced carrots
- 2 c. broccoli florets
- 1 bell pepper, chopped
- 1 medium onion, chopped
- 1 c. fresh mushrooms, sliced
- 2 Tbsp. oil
- 8 ounces sliced beef

Mix ginger, garlic powder, soy sauce and water; set aside. Rinse vegetables. Prepare vegetables as directed. Heat oil in a large frying pan and add meat when the oil is hot; stir until brown. Push meat to the side and in the middle of the pan, add carrots, onions and peppers. Cook for about one minute. Add mushrooms and broccoli, and cook until they are tender. Add the liquid mixture and cook until bubbly. Reduce heat, cover pan and cook for two more minutes. Service with whole-wheat pasta or brown rice.

Makes four servings. Each serving has 250 calories, 11 grams (g) of fat, 15 g of carbohydrate, 6 g of fiber, 23 g of protein and 410 milligrams of sodium.

(Julie Garden-Robinson, Ph.D., R.D., L.R.D., is a North Dakota State University Extension Service food and nutrition specialist and professor in the Department of Health, Nutrition and Exercise Sciences.)

Richland County Fair & Rodeo

"Life's A Ride at the Richland County Fair & Rodeo"

July 30 - August 2, 2014

In Concert

Sat., Aug 2nd • 7:30 pm



**Next Year's Fair:
August 5-8, 2015**

ALL FOUR DAYS

- Carnival by North Star Amusements
- Free Shows Daily
- Many, Many Exhibits
- Tons of Delicious Food

**& Special Guest
David Nail**



**Military
Appreciation Night
Thursday, July 31st**

**Carnival
PayOnePrice
Passes \$20**

PRESALE TICKETS AVAILABLE

BEGINNING MAY 28 • 8:30 AM

Package Deal \$59: 1 Concert Ticket, 1 Admission Button, 1 Thurs Rodeo Ticket & 1 Fri Rodeo Ticket

For info, call: 406-433-2801

PRCA Rodeo • Brookman Rodeo LLC

Thurs, July 31st & Fri, August 1st • 7:30pm each night

Concert Tickets

Presale:

General: \$40 • Reserved: \$45

During Fair Week:

(If Available)

General: \$45 • Reserved: \$50



Friday, August 1st

Contact the Richland County Fair Office: PO Box 1026 • Sidney, MT 59270 or call 406-433-2801 for more info or to request an accommodation for a disability. Richland County Fairgrounds 2118 W. Holly St. Grounds admission: \$2 a day without a button.

Keep A Cool Head

Don't get steamed when your cab air conditioning isn't cooling. Contact Tri-County Implement to get it working properly.

We have extensive experience, certified training & technical support to service your air conditioning system. We also have a full line of air conditioning parts in stock to keep your system working at its maximum cooling efficiency.

If you have a worn or leaking hose, we can replace it (in our service shop or at your location)—that means less downtime & more comfort for you!

Let Tri-County Implement be your air conditioning service source for all your equipment! Give us a call!



Tri-County Implement

2429 W Holly • Sidney, MT | 406-488-4400 • 1-800-624-6540

Visit our web site at: tri-cnty.com

FINANCING PROVIDED BY
CNH CAPITAL
LEASING | LOANS | CREDIT CARDS | INSURANCE

© 2014 CNH America LLC. All rights reserved. Case IH is a registered trademark of CNH America LLC. CNH Capital is a trademark of CNH America LLC. www.caseih.com

CASE IH
AGRICULTURE

Spotlight on Economics: Dynamic Changes in the Competition for Fertilizer

Through the years, fertilizer use has increased substantially in the U.S. and use in other countries also is expanding.

**By William W. Wilson, Sumadhur Shakya and Bruce Dahl
NDSU Agribusiness and Applied Economics Department**

Major changes are occurring in the U.S. fertilizer industry. One is the change in composition of crops and the more robust commodity market, which has caused an increase in fertilizer demand.

Second is the dramatic reduction in the price of natural gas, a primary input for fertilizer manufacturing. This change varies regionally and gives advantages to fertilizer plants in lower-cost natural gas states.

Another change is in competitive pressures. A number of new groups are looking to enter the industry, and some plants are looking to expand.

We analyzed the spatial competition in the U.S. fertilizer sector and tried to determine the likely future spatial distribution of production and flows of nitrogen fertilizer.

The industry has been dominated by a few major firms that will have to confront a number of new entrants in the market. There are at least 12 to 15 (some claim 25) new fertilizer plants being proposed in the U.S., with each costing about \$1.5 billion or more.

This industry has a number of important structural characteristics that impact competition and conduct. Domestic manufacturers have to compete with imports, demand is volatile, and firm processing functions have high fixed and low marginal costs.

Through the years, fertilizer use has increased substantially in the U.S. and use in other countries also is expanding. Fertilizer demand varies across crops and geographically, which has important implications for spatial competition. The expansion of corn production in the northern Plains is a major source of new demand.

Traditionally, the industry has been dominated by a few large players mainly in Oklahoma, Louisiana and Texas, and a few plants in the Midwest. The industry imported significant amounts of fertilizer to meet its needs, with nitrogen fertilizer imports amounting to 57 percent of consumption. Gulf imports are in the area of 13 million tons, mostly in the form of dry and ammonia that primarily funnel through Louisiana and Texas.

Imports and domestic prices are volatile and impact domestic plant utilization. Urea prices in the gulf have ranged from \$100 to \$200 per ton in the early 2000s to a peak of more than \$800 in 2008 and nearly that level again in 2012. Since then, prices have declined to the \$300 level. It is important to note that, in contrast to price relationships within the U.S., import prices have little relationship to U.S. or international natural gas prices. Also, the correlation between prices in the gulf and those at export origins, such as Trinidad, Russian or Black Sea ports, are very low.

Fertilizer manufacturing has tremendous economies of scale. Fixed costs are high and marginal costs low, and decline with increases in output. The dominant input cost is natural gas, which is 50 percent or more of the manufacturing costs, so access to low-cost natural gas provides an important advantage for plants. Indeed, it is partly the escalation in U.S. domestic oil output that is resulting in an increase in the variability of natural gas prices among regions. Prices are lower in states such as Louisiana, Texas, Oklahoma and North Dakota, which provide plants in those

areas with production advantages.

The breadth and scope of the new entrants in this industry is important. Since 2011, there have been many announcements about new plants, with each producing 1.1 million to 3.7 million tons per year.

The characteristics of the new plants are important. Some plants are expanding (CF Industries, Agrium and Koch); some are established cooperatives (CHS) or newly formed cooperatives (Northern Plains Nitrogen); some are regional energy firms (Dakota Gasification and Mississippi Power); and some are offshore firms expanding into U.S. markets (Eurochem).

Each plant has differing goals. Plants in existence would seek to expand and pre-empt new entrants. The cooperatives view this as a means to better serve their grower customers in a more vertically integrated system. Energy companies are looking for a use of their outputs. Offshore entrants are looking for opportunities to serve the U.S. market and potentially export fertilizer to other countries, including China.

Our model shows the distribution of fertilizer production, as well as flows from production areas to meet county level demands. The most valuable (lowest cost) origins for U.S. processing are primarily in Louisiana. Several locations in Wyoming, Iowa, Georgia, Nebraska, Kansas and North Dakota also would be positive.

While there are up to 25 proposed fertilizer projects, these results indicate that not all would be viable. This is particularly true if all were built, in which case many would operate at substantially less capacity. In a model specification that required any new plant to have a capacity utilization rate of 75 percent or more, the results change. In this case there would be only a few new plants, including those in Louisiana, Iowa and North Dakota.

Given these new plants, there would be substantial changes in the flow and distribution of products. Generally, these changes would result in reduced long-haul rail shipments. This possibly means that shorter-haul rail shipments would be competing with trucks. Rail volume would decrease in some routes. Results indicate that imports and shipments from import ports probably will decline and mostly be replaced by domestically produced products. Of particular importance is the prospective reduction in rail shipments from the Texas gulf.

The implications of these results are important. For growers, the results should be viewed as positive. The combination of new fertilizer plants producing at a lower cost ultimately will result in lower fertilizer costs and probably less volatile prices because, in part, the fertilizer will be produced with more stable domestic natural gas that is declining in value. The implications for the fertilizer industry probably are more dramatic. This is an industry characterized by volatile demands and large-scale manufacturing, which have high fixed and low marginal costs. Further, the nature of the entrants/expanders is such that they have differing motives for entry.

In the end, current fertilizer operators will face new plants that are more diverse in several respects. These reasons all suggest that there probably will be more new plants than needed, so they will be operating in a market with volatile demands and declining marginal costs. The impact of this would result in suppliers seeking to differentiate their products and distribution systems to seek competitive advantages.

Don't Lose Pounds to Infertile or Subfertile Bulls!

All bulls should have a breeding soundness exam each year. Bulls can be fertile one year & go bad the next!

We can test your bulls according to Society for Theriogenology (reproduction) standards. When we test bulls we will:

1. Measure the scrotal circumference
2. Palpate internal sex organs
3. Inspect penis & sheath for warts & other problems
4. Collect sperm & observe them under high power microscope for abnormalities.

We do bulls from 12 months to 12 yrs. of age. Larger groups of bulls can be done on your ranch. Individuals & trailer loads can be done Monday-Friday in the clinic.

PLEASE CALL AHEAD!

Western Veterinary Clinic

Williston, ND • 701-572-7878 or 1-800-828-6681

Doctors Lee Garbel, Jody Smith, Charlie Noland, Heidi Miller & Shayla Sorenson



**For All
Your
Heavy
Truck**



& Trailer Parts & Service

Agriculture, Oilfield & MORE

ALLSTATE PETERBILT

13579 58th St. NW • Williston, ND

Just North of the New Love's Truck Stop

701-774-0225 • 1-888-894-3511

Mon-Fri: 7am - 7pm • Sat: 8am - 3pm

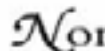
Wolf Point Wild Horse Stampede

Thurs-Sat, July 10-12, 2014

at the Marvin Brookman Stadium, Wolf Point, MT | Parades 1 pm Fri & Sat



RAM
RODEO SERIES



Northern
Prairie Auto Sales
406-653-1160 • Hwy 2, Wolf Point, MT 59201

Thursday Rodeo

**TOUGH ENOUGH
TO WEAR
PINK?**

Sponsored by WRANGLER®

Carnival July 9-12

RODEO TIMES

Thurs., Fri. & Sat. - 7 pm

Children under 12 free to Rodeo

(Gen. Admission Only)

Feature Attraction:

"The Raminator"

Tickets Go On Sale June 16

Order By Calling: 406-653-1770 • For More Info Call 406-653-2012

18 Time MPRC Committee Of The Year



USDA Announces \$78 Million Available for Local Food Enterprises, Historic Investment Will Support Entire Local Food Supply Chain

Submitted by Michael Damm

Agriculture Secretary Tom Vilsack today announced that USDA is making a historic \$78 million investment in local and regional food systems, including food hubs, farmers markets, aggregation and processing facilities, distribution services, and other local food business enterprises.

“The 2014 Farm Bill has given USDA new tools, resources and authority to support the rural economy,” Vilsack said. “Consumer demand for locally-produced food is strong and growing, and farmers and ranchers are positioning their businesses to meet that demand. As this sector continues to mature, we see aggregation, processing, and distribution enterprises across the local food supply chain growing and

creating jobs in rural and urban communities. These historic USDA investments, in support of local food, gives farmers and ranchers more market opportunities, provides consumers with more choices, and creates jobs in rural communities.”

Vilsack said today that forty-eight million dollars in loan guarantees for local food projects is now available through USDA’s Rural Development’s Business and Industry Guaranteed Loan Program, and \$30 million is available through competitive grants via the Agricultural Marketing Service’s (AMS) Farmers Market and Local Foods Promotion Program.

The 2014 Farm Bill requires USDA to set aside at least five percent of Business and Industry (B&I) program loan guarantees for projects that focus on local food business enterprises. Details on how to apply for local food funding through the B&I program are available on the Rural Development website. Applications are accepted on a rolling basis. The B&I program has the authority to fund local food infrastructure in urban areas as long as the project supports farm and ranch income and expands healthy food access in underserved communities.

Rural Development’s B&I program provides financial backing for rural business development in partnership with private-sector lenders. It is one of several USDA programs that help finance local foods projects. In 2013, Rural Development supported more than 170 local food infrastructure projects – from food hubs to scale-appropriate processing facilities, to cold storage and distribution networks. Entities eligible for B&I loan guarantees include cooperatives, non-profit organizations, corporations, partnerships or other legal entities, Indian tribes, public bodies or individuals.

The 2014 Farm Bill tripled funding for marketing and promotion support for local food enterprises by creating the Farmers Market and Local Foods Promotion Program, administered by the Agricultural Marketing Service (AMS). This new program makes \$30 million available annually to farmers markets, other direct producer-to-consumer venues, and other businesses in the local food supply chain. Under this program, \$15 million is now available for marketing and promotional support specifically for local food businesses, including food hubs, delivery and aggregation businesses, and processing and storage facilities along the local food supply chain, while \$15 million is for marketing support for farmers markets and other direct to consumer outlets. Since 2009, AMS, which administers this program, has funded nearly 450 projects totaling \$27 million to support direct marketing efforts for local food. More information about how to apply is available on the AMS website. Applications are due June 20, 2014.

These funding opportunities are cornerstones of the USDA’s commitment to support local and regional food systems. USDA’s Know Your Farmer, Know Your Food Initiative coordinates the Department’s policy, resources, and outreach efforts related to local and regional food systems. The Know Your Farmer, Know Your Food Compass maps nearly 3,000 local and regional food projects supported by USDA and eleven other federal agencies. Secretary Vilsack has identified local food as one of the four pillars of USDA’s commitment to rural economic development, along with exports, conservation and biobased economies.

Anthony Preite, State Director, USDA-Rural Development Montana, said, “This additional \$78 Million in Farm Bill funds could significantly raise the total Farm Bill dollars invested in Montana, from the more than \$3.4 million, Rural Developments has invested so far, in 2014.”

USDA Announces Changes to Fruit, Vegetable and Wild Rice Planting Rules

Submitted by Dale Ihry

USDA’s Farm Service Agency (FSA) has announced fruit, vegetable and wild rice provisions that affect producers who intend to participate in certain programs authorized by the Agricultural Act of 2014.

“Similar to previous programs that we’ve administered, planting fruits, vegetables or wild rice on base acres on a farm can result in a payment reduction for program participants,” said Aaron Krauter, State Executive Director for the North Dakota FSA.

Producers who intend to participate in the Agriculture Risk Coverage (ARC) or Price Loss Coverage (PLC) programs are subject to an acre-for-acre payment reduction when fruits and nuts, vegetables or wild rice are planted on the payment acres of a farm. Payment reductions do not apply to mung beans, dry peas, lentils or chickpeas. Planting fruits, vegetables or wild rice on acres that are not considered payment acres will not result in a payment reduction. Farms that are eligible to participate in ARC/PLC but are not enrolled for a particular year may plant unlimited fruits, vegetables and wild rice for that year but will not receive ARC/PLC payments for that year. Eligibility for succeeding years is not affected.

Planting and harvesting fruits, vegetables and wild rice on ARC/PLC acreage is subject to the acre-for-acre payment reduction when those crops are planted on either more than 15 percent of the base acres of a farm enrolled in ARC using the county coverage or PLC, or more than 35 percent of the base acres of a farm enrolled in ARC using the individual coverage.

Fruits, vegetables and wild rice that are planted in a double-cropping practice will not cause a payment reduction if the farm is in a double-cropping region as designated by the USDA’s Commodity Credit Corporation.

For additional information on fruit, vegetable and wild rice rules, visit www.fsa.usda.gov or contact your local USDA Service Center.

STAMPEDE

By Jerry Palen



"Some people get Road Rage.
Elmo gets Gate Rage!"



with United Prairie Cooperative in June!

ARROW FARMQUIP




In stock tub and alley portable loading cutes and more!

HAY RAKES



Pre-season **SALE** on hay rakes. Save **THOUSANDS!**

Enrossi Model RT 9 - 9 Wheel Rake - Reg. Price \$6,170. **Sale Price \$4,900!**
Model MK18 - 18 Wheel V Rake - Reg. Price \$22,365. **Sale Price \$17,900!**

FUEL SLIP TANKS



Your Choice!
25% Off!

PREMIER PORTABLE BUILDINGS




Up to 40 feet long!

(Limited to supplies on hand only for all sale items.)

United prairie

Hours: Monday - Sunday, 6am - 7pm

Located at 241 West Main Street in New Town **888.627.3949** | www.unitedprairie.coop
Serving You in Western North Dakota Since 1929



Western Cooperative
CREDIT UNION

Great Rates and Personal Service For Farmers and Ranchers

OPERATING MACHINERY LIVESTOCK REAL ESTATE

We are Committed to your Financial Success!

WILLISTON: 1300 BISON DRIVE • 215 WASHINGTON AVE.
572-4000 • 1-800-584-9220
RAY: 10 MAIN ST • 568-3663
WWW.WCCU.ORG




Giddy Up,

The McKenzie County Fair is Coming, July 9-12

By Jaimee Green

Where else can you watch an angry bull stomp and thrash about, watch blinged-out barrel racers steady their steeds, or witness brave pickup men charge toward bucking broncos? It's the same place where you can listen to live entertainment while enjoying a fist full of cotton candy while riding the zipper among friends and neighbors at the carnival! Before the dust settles on the 55th annual McKenzie County Fair, folks will have an opportunity to enjoy rodeo performances, a demolition derby, beef barbecue, two evening dances, carnival, petting zoo and 4H livestock and horsemanship shows; promising to be another roping, riding, bucking good time!

The four-day event kicks off July 9, and lasts until July 12. This year's theme is "Lasso Some Fun."

"As a committee I think we are most proud of the fact that we have been able to continue creating that small-town feel for our fair, even though our community has grown so much. People still feel safe and enjoy the family aspect of the event," said Janel Lee, a longtime fair committee member.

Events kick off on Wednesday, July 9, at 10:00 a.m. with a 4H livestock exhibit that lasts throughout the day.

The carnival will take place daily beginning Thursday, July 10, as well as Curly's Funtastic Kid Zone opening at 11:00 a.m. The 4H exhibits will continue that day with a swine show, goat show, sheep show and beef breeding show.

The traditional Olaf Leiseth Jr. Memorial Draft Horse Competition will take place Thursday at 7:00 p.m. with registration beginning at 6:00 p.m. "This really is a lost art and is something everyone should see," Lee said. There, the large, powerful horses will make their through an obstacle course to see which horse can complete the course without knocking over any of the cones. This year, there will also be a



The Farthest Edge will perform July 11.

National Wild Turkey Federal shooting booth and old time photos booth daily. Attendees will also have an opportunity to create Can Art, with artist Matt Sorensen, who can customize, mix and match pictures together into a single piece of artwork.

Commercial exhibitors will be there daily selling local crafts and goods until 9 p.m. on Thursday and Friday and until 7:00 p.m. on Saturday.

Thursday's Main Street parade will begin at 4:00 p.m. in Watford City followed by a beef barbecue beginning at 5:30 p.m. at the fairgrounds. The 4-H Open Class Dog and Livestock Competition will begin at 6:00 p.m.

On Friday 4-H awards will be presented at 1:00 p.m. followed by a livestock sale. At 2:00 p.m. registration opens for the demolition derby which is set to take place at 6:00 p.m. There will be live entertainment beginning at 9:00 p.m. with a performance by "The Farthest Edge" of Billings.

A youth rodeo is set to place on Saturday at 9:00 a.m. in the multi-purpose building followed by NDRA rodeo slack at 1:00 p.m. The Li'l Buckaroo Rodeo kicks off at 3:00 p.m. followed by McKenzie County Caviar at 4:30 p.m. and the Cake Walk at 5:00 p.m.

The NDRA rodeo begins at 6:00 p.m. with entertainment following at 9:00 p.m. with K-Hook.

General admission buttons cost \$5 and are good for every day of the fair. The buttons also include admission to the barbecue.

Tickets to the NDRA rodeo, or to the demolition derby, are \$10 for adults, \$5 for youth ages 6-13 and 6 and under are free.

For more information, email Carolyn Levang at levang4@ruggedwest.com. Or contact (701) 898-9801.

Planning for the fair is a year-long activity that will begin again in November when committee members attend a fair convention. There they will meet with entertainment and carnival acts to determine next year's entertainment line-up.

The first McKenzie County Fair on record dates back to 1959.



The 2013 Demolition Derby.

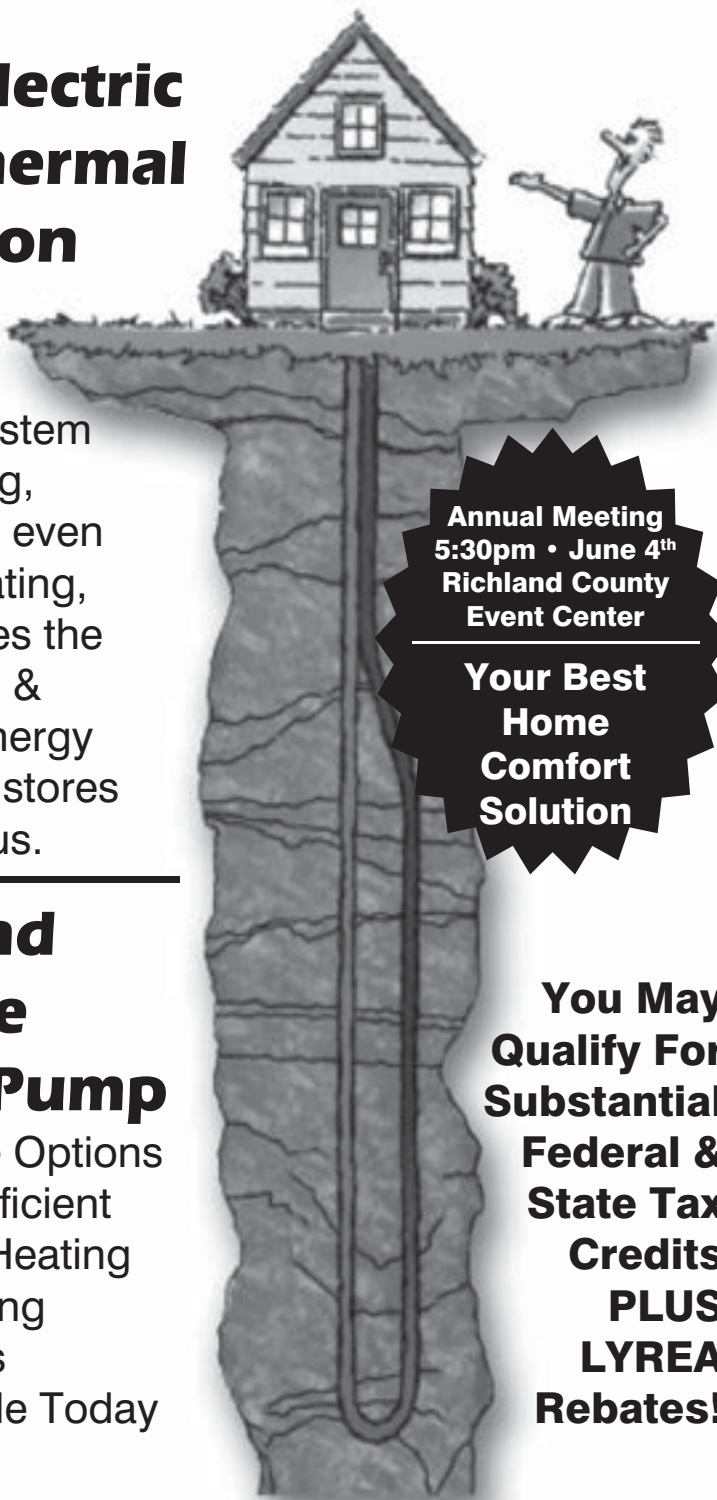
IF YOU'RE LOOKING FOR FREE ENERGY... ...YOU'RE GETTING WARMER!

The Electric Geothermal Solution

A single, simple system for heating, cooling & even water heating, which uses the abundant & natural energy the Earth stores beneath us.

Ground Source Heat Pump

- Flexible Options
- Most Efficient
- Home Heating & Cooling Options Available Today



Annual Meeting
5:30pm • June 4th
Richland County
Event Center

**Your Best
Home
Comfort
Solution**

**You May
Qualify For
Substantial
Federal &
State Tax
Credits
PLUS
LYREA
Rebates!**



Lower Yellowstone REA

3200 W Holly • Sidney • 406-488-1602 • www.lyrec.com

Your Touchstone Energy® Cooperative



TRINITY

Community Clinic -
Western Dakota

Visiting Physicians

• *June 2014* •

5 - Dr. Mark Noel
- Audiology Services

6 - Dr. Ravindra Joshi
- Orthopedist

9 - Dr. Aaron Albers
- Podiatrist

10 - Dr. Erdal Diri
- Rheumatologist

19 - Dr. Mark Noel
- Audiology Services

23 - Dr. Aaron Albers
- Podiatrist

26 - Dr. Emad Dodin
- Interventional Cardiology

*To make an appointment with any of these
specialists, call 701-572-7711.*

1321 W. Dakota Parkway
Williston, ND
701-572-7711
1-800-735-4940

**Re-Inventing
Health**



Summer is Coming!

Meet Our Pivot Crew!



(L-R): Avery BlackDog, Billy Lindsay, Allery BlackDog, Bryce Jones & Frenchy RattlingThunder



Your Full Turnkey Valley® Dealer Also Offering These Services:

- Valley Pivot Sales • Installation Services and Parts
- Floating Irrigation Pumps • Installation and Repair
- Water Well Drilling & Well Maintenance • Plumbing • Trenching
- Electrical • Pipelines • Boring • Directional Drilling
- Drip Irrigation Systems • Irrigation Systems Insurance
- Heating & Cooling

**“WE CAN DO IT ALL!
No SUBS NEEDED.”**

www.agriindustries.com | Licensed in MT & ND

Sidney, MT	:	Williston, ND	:	Miles City, MT
1775 S. Central Ave.	:	3105 - 2nd St. W	:	2106 S. Haynes Ave.
406-488-8066	:	701-572-0767	:	406-234-2309