

Mondak Area Stockgrowers Annual Meeting November 19

Mondak Area Stockgrowers will hold its annual meeting and dinner Monday, November 19 at the Sidney Country Club. The social takes place at 5:30p.m. followed by a beef entre dinner prepared by 'The Fringe'. Ms. Jude Capper will present, "Despite the drought, US beef production is green."

Jude L. Capper, Ph.D. is an independent Sustainability Consultant based in Bozeman, MT; and an Adjunct Professor of Animal Sciences in the Department of Animal Sciences at Washington State University.

Jude's current research and outreach work focuses on modeling the environmental impact of livestock production systems, specifically dairy and beef. Her principal professional goal is to communicate the importance of livestock industry sustainability and the factors affecting sustainability to enhance

the knowledge and understanding of stakeholders within food production from

the rancher and farmer through to the retailer, policy-maker and consumer.

Current research projects include comparisons of historical and modern production practices in dairy and beef industries;

and the effect of technology use and management practices upon environmental impact. She has an active social media presence and spends a considerable amount of time debunking some of the more commonly-heard myths relating to resource use and the environmental impact of livestock production.

Dinner is \$15 per plate for anyone who renews their membership, or becomes a new member, \$20 for others.

Many door prizes will be given away. If any farm or ranch wishes to sponsor a door prize, please bring it to the meeting.

Sidney Livestock Market center is sponsoring the meeting and dinner.

Come and learn about current issues facing the beef industry. The association needs your input, your ideas and your participation to keep this industry strong and united.

Jude L. Capper will be the guest speaker at the 2012 MonDak Area Stockgrowers meeting.



It's A Charlie Brown Christmas In 2012

The Sidney Area Chamber of Commerce and Agriculture announces the 2012 Christmas Stroll and Parade of Lights will be the day after Thanksgiving, November 23rd. Chosen as the theme this year is "It's A Charlie Brown Christmas".

The Chamber invites the community to become involved in the activities of this day. Food vendors can set up on East or West Main Street, or on the sidewalk along Central Avenue. Food items served in the past have included brats, pretzels, hot chocolate and cider, fry bread, and Christmas cookies. Burritos are already planned for this year. Electricity can be arranged for those needing power.

The Chamber Soup Contest will again be hosted by Ben and Brian McDowell, and their staff in the Restorx shop on South Central Avenue. Contestants must agree to make at least a roaster full of their specialty, and be on hand to serve. People's Choice awards of \$150 in Chamber Bucks will be divided between first and second place.

Entertainment is needed for the outdoor stage on East Main Street. Any type of vocal, instrumental, or dance act is welcome to sign up and perform. Seating will be available for the audience.

Wrapping up the downtown festivities will be the Parade of Lights at 7:00 p.m. The parade will line up in the Reynolds Market parking lot and travel north the full length of Central Avenue. All entries are encouraged to be decorated with holiday colors and lights. Awards will be given out for Best Use of Theme, Best Use of Lights, and Most Creative.

Contact the Chamber at 406-433-1916 or by emailing schamber@midrivers.com for more information or entries. The Chamber also encourages everyone to shop local this holiday season. The whole community benefits through supporting our local merchants.

Watford City Parade of Lights Coming Up

The Watford City Chamber of Commerce is "Celebrating a Storybook Christmas" this year for the Parade of Lights. They are looking for floats to participate in the parade, to make it fantastic this year.

The theme for this year's parade is, "Watford City Celebrates a Storybook Christmas." The only guidelines set for the floats is try to follow the theme and that no other floats can contain a "live" Santa, as they only want one float with Santa on it.

The parade will be November 23rd beginning at 6:30pm at RAC and continue down Main Street. The parade will make about a 3 mile loop through town. As soon as they are done, all the floats will park along Main Street for all to see and to be judged. There will be trophies handed out for the top floats at this point. Also during this time, children will have a chance to visit with Santa.

You may enter at any point, but please let the Chamber know that you are planning on entering a float so they can do a better job of advertising the event.

For further information, please contact the Watford City Area Chamber of Commerce at 701-580-1493.



Photo by Kris Baxter

Bridge Lighting Nov. 17

The Fairview Chamber of Commerce and Friends of the Fairview Bridge will hold their annual Bridge Lighting and Fireworks on Saturday, November 17 at Sundheim Park. Large lighted ornaments, generators and help are all needed to continue this awesome night. Anyone who wishes to bring an ornament or generator, or who can spare an hour or two is asked to contact Paul Eldridge at 701-744-5346 or Ray Trumpower at 406-742-5259. Cash donations to help purchase lights and ornaments are also welcome.

Kiwanis Has Coats!

No child has to be cold this winter. The Sidney Kiwanis Club has coats, hats, mittens and boots for children who need them. Just call or visit the Edward Jones, Nick Lonski, office at 611A S. Central Ave., Sidney, or call them at 406-433-3600.

Donations of clothing or cash are welcome to support this worthwhile project. If you wish to help, please contact any Kiwanian or Edward Jones, Nick Lonski.



McKenzie Building Center, Inc.

Always Your Trusted Partner - Since 1934 - Watford City, ND - (701)-444-3665

Lumber, Flooring, Appliances, Cabinets, Windows, Doors, and More!

CONTRACTORS - COMMERCIAL CUSTOMERS

ALL YOUR BUILDING NEEDS - WHOLESALE PRICES - FREE DELIVERY

STOP IN AND GET ACQUAINTED WITH NEW MANAGEMENT



RUSS ARCHER - PRESIDENT



STEVE SCHAEFFEL - MANAGING DIRECTOR

WE WILL MEET AND BEAT ANY SIMILAR ITEM PRICE!



YOUR OWN CREDIT LINE

0% INTEREST!

APPLY TODAY!

SUBJECT TO CREDIT APPROVAL

MCKENZIE BUILDING CENTER BOOM TRUCK DELIVERY





FULL UNIT BUYS WHILE SUPPLIES LAST



2-1/2" FLANGE I-JOISTS
9-1/2" AND 11-7/8" 1-3/4"
IWL 9-1/2", 11-7/8", 14"
IN-STOCK NOW



2X6-14 SPF
139 PC/UNIT
\$6.75 EA



SHEET ROCK
34 PC UNIT
4X12-1/2 \$13.80 PC



30' 40' 50' 4' OC AGTRUSSES
24' 2' OC RESIDENTIAL TRUSSES
IN-STOCK NOW

ELECTRICAL AND PLUMBING SALE



SINGLE GANG NAIL ON BOXES
Thomas & Betts \$1.29 EA



NM SHEATH WIRE
12-2 250' ROLL
REG \$89.99 NOW \$74.99



PLUMB QUICK "BOOT" CONNECTORS
FERNCO STARTING AT \$4.59



NOW STOCKING PEX PIPE
1/2" X 100'
\$27.99 ROLL

NEW ITEMS IN STOCK NOW



COMBO KIT
COMPRESSOR, FINISH NAILER
BRAD NAILER, HC STAPLER
\$299.95



JACKETS, BIBS, HOODED JACKETS, COVERALLS
Dickies



DEWALT TOOLS - JUST ARRIVED!
TABLE SAWS, CHOP SAWS, SAWZALL DRILLS
20V MAX WAS \$439.99 NOW \$359.99





METAL BUILDINGS ON SALE



30' X 40' 10' DELUXE POST FRAME
4' OC TRUSSES
2' FINISHED OVERHANG
1- WALK DOOR
1- 16' 8" OH DOOR
1- 10' SLIDING DOOR
4 WINDOWS
FREE OPENER! \$9,995





30' X 60' 12' POST FRAME
LAMINATED COLUMNS
4' OC TRUSSES
12' SLIDING DOOR
1 WALK DOOR
FREE PNEUMATIC NAILER! \$10,799

FREE \$20 MERCHANDISE WITH \$200 PURCHASE
McKenzie Building Center, Inc.

FREE \$100 MERCHANDISE WITH \$1,000 PURCHASE
McKenzie Building Center, Inc.

Phone: (701)-444-3665
Fax: (701)-444-4001
Highway 23 East, 1504 4th Ave NE
Watford City, ND 58854
Mon, Tues, Wed, Fri: 8 AM - 6 PM
Thurs: 8 AM - 8 PM
Sat: 8 AM - 1 PM
Sunday: Closed



Williston, ND
Watford City
Sidney, MT

www.McKenzieBuildingCenter.com

MBCI-61

*BASED ON MINIMUM ORDER

USDA 150th Birthday Celebration Held

By Ashley Harris
“The People’s Celebration” for the 150th Birthday of the USDA was held the evening of Thursday, Nov. 8th. The celebration included informational booths, speakers, a dinner, and an award presentation.

The evening started off with Sidney’s 5th Grade students exploring the booths and getting a brief presentation at each one. Booths covered numerous topics including: invasive species, national grasslands, grain products, healthy food choices, and information about Abe Lincoln from his “cousin”.

Following that the speakers gave their presentations, which were all very informative.

First up was Gary Adams with the USDA out of Helena, who spoke on the Emerald Ash Borer. The Emerald Ash Borer is an invasive species that can kill an ash tree within 3 years time. Adams’ presentation showed ways of noticing if a tree is infested.

Next up was Mark Henning with the USDA out of Miles City, who demonstrated the importance of ‘no tillage’ for soil. Henning explained that the more you till your soil, the more you break up the main components of it.

After him was Tony Preite with the USDA Rural Development, who spoke about what they are implementing and hoping for the area.

At this time, there was a break for a cake cutting with Abe’s cousin. Bill Brenner, of Sidney, who has traced his family heritage back to Nancy Hanks Lincoln, President Lincoln’s mother.

Following the cake was a representative from the Forest Service, speaking on the history of the Forest Service and Dakota Prairie Grasslands.



Steve and Marilyn Pust, Cooperator of the Year recipients, received their award Thursday evening at the 150th Celebration for the USDA. They are recognized for their efforts towards irrigation conservation and water quality issues. Steve and Marilyn received a plaque, an embroidered coat from Stockman Bank, and a cap from the Richland County Conservation District.

After him was Tatyana Rand with the USDA out of Sidney, who spoke about the Wheat Stem Sawfly and its effects throughout the MonDak region. Rand explained the Sawfly is an invasive species and what studies they are doing to control it.

The final speaker was Benjamin Clark with the MonDak Heritage Center in Sidney. Clark showed a number of local photos from the early 1900’s, while explaining the Homestead Act and how it affected our region.

Following the speakers, there was a social which led into dinner.

After dinner, the Cooperator of the Year Award was presented to Steve and Marilyn Pust, of Savage. Pust was chosen following consideration of all of his efforts towards irrigation conservation and water quality issues. Pust received a plaque, an embroidered coat from Stockman Bank, and a new

cap from the Richland County Conservation District.

To wrap up the evening, Montana Historian and Storyteller Hal Stearns spoke on “Homestead Dreams: From High Hopes to Lingering Legacy.” He spoke on the homesteading days of Montana, displayed some great historic photos and some personal historic facts.

Overall, the evening was a success and very informative to all. Congratulations to the USDA on 150 years.

Give your opinion on any story at
Roundup
WEB.COM



Bill Brenner, of Sidney, who is a distant cousin to Abraham Lincoln, was one of the booth presenters at the USDA Celebration Thursday evening. Pictured here are students from Sidney’s 5th Grade class looking at some of Brenner’s Lincoln memorabilia and hearing about the family history.



Scope Us Out!

- Hunting Rifles & Shotguns
- Shotgun Shells & Rifle Ammo
- Scopes by Vortex, Leupold, Nikon
- Range Finders
- Spotting Scopes
- Camo & Hunter Orange Clothing
- Authorized Winchester Gun Safes
In stock & drop shipping available
- Targets
- Game Bags
- Hunting Knives
- Gun Cleaning Supplies
- Scents, Decoys, Calls



**20% off Fishing Rods & Reels
Archery Targets**

HIGH CALIBER SPORTS

Hours: 9am-6pm Mon-Fri • 9am-4pm Saturday
214 S. Central Ave. • Sidney • Across from Centre Theatre
406-433-1800



South 40
Restaurant, Lounge & Casino
207 2nd Avenue NW, Sidney, Montana
(406) 433-4000 or 433-4100



GIFT CARD
Purchase in any amount and use at either Location!

Join the Gaming Club for extra jackpots and eatn extra points while plaing vegas line games in our spacious casino!

FREE Soup & Salad Bar Every Noon with Prime Rib Sandwich Special

Kids have a varied menu!



South 40
Restaurant Lounge & Casino
OPEN 8 a.m. Daily



Allyson Nentwig

KIDS! Register To Win Two Giant Christmas Stockings!

The South 40 is is a short walk from the Holiday Inn Express!

Now Taking Reservations for Thanksgiving Dinner. Serving till 3 p.m.



KARAOKE

every Wed., Fri. & Sat. Starting at 9 p.m.

Direct Sellers Fall Showcase

Saturday, Nov. 17
9 a.m. - 4 p.m.
Richland County Fairgrounds Event Center
Sidney, MT

Door prizes at every booth!  *Cash & Carry Items!* 

Sidney MOPs serving concessions all day!

Companies Represented:

AdvoCARE, Arbonne, Avon, Blessings Unlimited, Celadon Road, Cierra Ashley, The Clever Container Company, Close To My Heart, Cookie Lee, Daisy Blue Naturals, Damsel in Defense, Dove Chocolate Discoveries, Heavenly Special Teas, It Works, J.R. Watkins, Jamberry Nails, Jockey Person to Person, Just Jewelry, L'BRI Pure and Natural, Mary Kay, Miche, Norwex, Organo Gold, Origami Owl, The Pampered Chef, Paparazzi, PartyLite, Pink Zebra, Rodan & Fields, Scentsy, Signature HomeStyles, Silpada Designs, Stampin' Up!, Tastefully Simple, Thirty-One Gifts, Tupperware, Uppercase Living, Velata, Wildtree.

Incase of inclement weather the showcase will be held on Sunday, November 18

For all your Farm/Ranch,
Recreational, Residential,
and Commercial needs.



**Alan
Seigfreid**
**Amanda
Seigfreid**

Jim & Janice Knudsen 120 2nd St. N.E. • Sidney Mt. 59270
Broker/Owners (O) 406-433-3010 • (C) 406-489-3010
email: alans@midrivers.com
Website: www.missouririverrealty.com



Yellowstone Chiropractic Clinic
(406) 433-4757 222 2nd. Ave. SW
1-866-433-4757 Sidney, MT 59270



Dr Ryan Laqua
Chiropractic Physician

• Sports Injuries • DOT Physicals

• Personal Injuries & Pain Conditions

Thank You

We cannot begin to express our
thanks to all of our relatives,
neighbors & friends for your
overwhelming support during this
difficult time. God Bless You All.

The Family of George Winhofer

**We Welcome
Your
Engagement
and
Wedding
Announcements**

**We Will Publish Your
Announcement,
including a photo,
FREE of Charge
and in color whenever
possible**

Invitations will be charged for

**Send your
announcements to
Box 1207, Sidney, MT
email to
email@esidney.com
or stop by our office at
111 W. Main, Sidney**

The

Roundup

Fairview Warriors State Bound

The Fairview High School Football team will be playing for the State Championship this Saturday, November 17th, at 1PM in Superior. Fairview is 11-0 for the season and ranked 1st in the state. Tune in to 95.1 to hear live broadcast of the Fairview Warriors in the State Championship game.

Keller Benefit Nov. 17

Friends of Edgar and Tracy Keller are hosting a benefit slushburger feed and silent auction Saturday, November 17 from 6-9 p.m. at the VFW in Sidney. The Keller's unborn son, Grant, has multiple tumors in his right lung which will require major surgery at Denver Children's Hospital after he is born.

An account has been established at Stockman Bank in Sidney, under Donations for baby Grant Keller, for anyone wishing to help.

Turkey Trot Planned for November 23rd

The Sidney High School Cross Country team is hosting a Turkey Trot for all ages on November 23rd. There will be a 1k kids run for 6th grade and lower, a 3k walk, and a 5k run. All races will begin and finish at Sidney High School.

Registration forms can be picked up at any of the Sidney Public Schools. Fees for the Turkey Trot are as follows: Kids 1k is \$20 with pre-registration or \$25 the day of, 3k Walk is \$25 with pre-registration or \$30 the day of, and the 5k Run is \$30 with pre-registration or \$35 the day of. Race packets, including shirt, tag, schedule and course map will be available for pick up between 3pm and 6pm on Wednesday, November 21st at Sidney High School.

The Turkey Trot will begin with the Kids 1k starting at 10AM, followed by the 5k Run starting at 10:30AM, and the 3k Walk starting at 10:45 AM. The school will be open for indoor warm up and restroom use.

Awards will be presented to the 1st, 2nd, and 3rd place boys and girls in the Kids 1k, while gift and cash prizes will be awarded to 1st, 2nd, and 3rd place male and female 5k runners.

OBITUARIES

Gordon Sanders, 85 formerly of Sidney, MT & Savage, MT

Gordon Sanders passed away November 2nd at the VA home in Glendive, MT. No services are planned until spring in Geraldine, MT.

STATISTICS

Lake Water Level Reports

	Fort Peck	Sakakawea
Current Elevation.....	2234.0	1831.6
Last Week's Elev.	2234.0	1831.55
One Year Ago	2236.1	1841.2
Release For Day (C.F.S.)	10,000	22,000

Watford City Weather Data

Source: North Dakota Agricultural Weather Network				
Date	High	Low	Precip.	
Nov 5	44	31	0.05
Nov 6	62	32	0.00
Nov 7	51	40	0.00
Nov 8	61	33	0.00
Nov 9	41	23	0.02
Nov 10.	26	15	0.62
Nov 11.	19	5	0.00

Sidney Weather Data

Source: MSU Eastern Agricultural Research Center				
Date	High	Low	Precip.	
Nov 5	N/A	N/A	0.00
Nov 6	N/A	N/A	0.00
Nov 7	N/A	N/A	0.00
Nov 8	N/A	N/A	0.00
Nov 9	N/A	N/A	0.00
Nov 10	N/A	N/A	0.00
Nov 11	N/A	N/A	0.00
Average YTD Precipitation				00.00
2012 YTD Precipitation				00.00

EVENTS

SEND US YOUR EVENTS!

THE ROUNDUP: PO Box 1207, 111 West Main,
Sidney, MT 59270
406-433-3306 Fax: 406-433-4114
Email: classads@esidney.com

Richland County

Events in Sidney unless otherwise listed. MT Zone.

Wed., Nov. 14

7 p.m. — Beginning square dance lessons. Every Wed. at Sidney HS Band Room.

3-6 p.m. — West Side Book Fair. West Side Elementary School. Profit goes to the West Side Library Fund. For more info. contact Dawn Greenwood, teacher-Librarian, 433-5501. Everyone invited.

Thurs., Nov. 15

3-7:30 p.m. — West Side Book Fair. West Side Elementary School. Profit goes to the West Side Library Fund. Everyone invited. For more info. contact Dawn Greenwood, teacher-Librarian, 433-5501.

5 p.m. — TOPS, Crestwood NW entrance, Weigh-ins 5-5:30 p.m., Meeting 5:30-6 p.m.

8 p.m. — NA meeting, Millers' Corner banquet room.

Fri., Nov. 16

10 a.m. — West Side Book Fair ends. West Side Elementary School. Profit goes to the West Side Library Fund. For more info. contact Dawn Greenwood, teacher-Librarian, 433-5501. Everyone invited.

Sat., Nov. 17

9 a.m. — AA Group Trinity Lutheran Church Education bldg.

4 p.m. — Lighting of the Fairview Bridge; huge lighted ornaments will decorate Sundheim Park at 4 p.m.. Fireworks display, 7 p.m.

6-9 p.m. — Baby Grant Keller benefit. VFW in Sidney. The Keller's unborn son has multiple tumors in his right lung which will require major surgery at Denver Children's Hospital.

7 p.m. — AA Group Trinity Lutheran Church Education bldg.

Sun., Nov. 18

7 p.m. — AA Group Trinity Lutheran Church Education bldg.

Mon., Nov. 19

Noon — AA Group Trinity Lutheran Church Education bldg.

5:30 p.m. — MonDak Area Stockgrowers Annual Meeting & Dinner, social, 5:30 p.m.; meeting & dinner, 6 p.m. Dinner is \$15 per plate for anyone who renews dues or becomes a new member, \$20 per plate for all others.

Tues., Nov. 20

7 p.m. — AA Group Trinity Lutheran Church Education bldg.

McKenzie County

Events in Watford City unless otherwise listed. CT Zone.

Wed., Nov. 14

8 p.m. — Al-Anon, Sanford Room, McKenzie Co. Public Library.

Thurs., Nov. 15

5-7 p.m. — Chamber Business After Hours. Fox Hill Golf Course Club House, enjoy appetizers and wine and get the latest business news from community members, the Chamber and economic development.

8 p.m. — AA Group, Northern Pump & Compression. Call 770-3603 or 770-2675 for directions or ride.

Sat., Nov. 17

2-4 p.m. — Good Shepherd Home Bazaar & Craft Sale.

Other Counties

Wed., Nov. 14

8:30-9 a.m. — Soil Health Workshop, Biesiot Activities Center, Dickinson State University Campus, Dickinson, ND. For more information contact Heidi Heintz, 701-390-3222 or email heidihintz@hotmail.com. The courtesy of an RSVP would be appreciated.

View all monthly events on our calendar
at www.roundupweb.com.



Christmas Big Bucks Ready

Elk River Printing “Santas” display the Christmas Big Bucks that are hot off the press. Pictured left to right are Karen Boehler, April Boehler and Patti Tornabeni. The Christmas Big Bucks interest free loans are available at 1st Bank, Stockman Bank, and the Richland Federal Credit Union in Sidney, MT. Up to \$1,000 may be borrowed, with 9 months to repay. They must be spent by December 24th. Christmas Big Bucks is a project of the Trade Promotion Committee of the Sidney Area Chamber of Commerce and Agriculture, and 46 participating members.

Tractor & Equipment Plans Major Expansion

Tractor & Equipment Co. is pleased to announce the purchase of 50 acres of property in the Bakken Industrial Park north of Williston on Highway 2. The property will be the future home to a full service T&E The Cat Rental Store rental center providing machinery, electrical power generation, air compression and mobile air-conditioning rentals.

“T&E The Cat Rental Store already has the largest equipment rental fleet in the Bakken, and this investment will allow us to provide truly unrivaled local support to our rental customers,” said Troy Hickey, Vice President of Sales and Marketing. “When our new facility opens mid-2013, we will greatly increase our overall rental capacity in western North Dakota and eastern Montana, adding approximately 40,000 square feet with 12 full-service bays and other supporting areas for the rental business.” T&E will continue to operate its sales, parts, and service operations at its current Williston facility at 14078 West Front Street.

About Tractor & Equipment Co.

Since becoming an authorized Caterpillar® Dealer in 1929, Tractor & Equipment Co. (or “T&E”) has grown from its roots in Sidney, Montana, to a multi-store operation servicing 44 counties in western North Dakota, central and eastern Montana, and northern Wyoming. T&E operates 7 facilities in 6 cit-

ies under the names Tractor & Equipment Co., T&E The Cat Rental Store, and T&E Power Systems. Tractor & Equipment Co. offers Caterpillar® and other preferred brand equipment and power systems sales, parts, service and rentals for the construction, petroleum, mining, agricultural, governmental, electric power, on-highway, and industrial markets. For more information, please visit www.tractorandequipment.com.

on over, the FAMILY FUN begins behind the magenta pink door!

PARTY CENTRAL & GIFTS!

Main Street & POPCORN FACTORY

Made FRESH on location

15-25% off Thanksgiving Sale

Dinnerware • Napkins • Platters & More • Inflatables • Cooked Turkey! Limited Supply

Like US ON FACEBOOK! Party Central & Main Street Popcorn Factory

Address: 105 East Main Street Sidney, MT 59270 Telephone: 406-433-4FUN

Remember our Bake Sale Supplies! Cello Bags, Platters, Doilies & MORE!

I would like to express my gratitude and thanks to everyone who supported me throughout the election. Your support has been greatly appreciated.

Janice Klempel

PAID FOR BY JANICE KLEMPSEL FOR CLERK OF DISTRICT COURT, P.O. Box 255, LAMBERT, MT 59243

In Appreciation...

We are Giving Away A Meal Basket every Wednesday until Christmas. Turkey or Ham and all the trimmings. No Purchase Necessary... Sign Up Today

Open Tuca-Fri • 9am-6pm
Saturday • 10am-5pm

THE TRADING POST

111 East Main • Sidney • 406.433.7676

Baby Grant Keller Benefit

Saturday, Nov. 17 • 6-9 pm

VFW • Sidney

Slushburger Feed • Silent Auction

Or donate to the “Donations for Baby Grant Keller” fund at Stockman Bank, Sidney

Grant, the unborn son of Edgar & Tracy Keller, will require surgery after he is born to remove multiple tumors in his right lung.

Thank You.

Thank you to everyone for their support in the general election. It has been my pleasure to serve Richland County as your commissioner.

Don Stepler

Paid for by Stepler for Commissioner, 15243 County Road 321, Brockton, MT 59213, Kathy Stepler, Treasurer.

Stop in and meet our new bartenders
Mary Bradley & Lauren Mueller!

Plan to attend the Bobcat-Grizzly Game on Saturday with Beef Stew and Prizes for the Fans!

Vegas Line Games in the Pub's Spacious Casino!

22 Plasma TVs with NFL Sunday Ticket for your favorite games

Sounddog Speakers right at your table!

Super Bowl Party Tickets Drawn During Sunday, Monday & Thursday Football Games!

“Time Out” 4-6 p.m. Daily

\$1.00 off All Beers

WEDNESDAYS LARGE PIZZA & PAIL OF BEER \$19⁹⁹

FRIDAYS 18 WINGS & PAIL OF BEER \$19⁹⁹

Winners PUB SPORTS BAR & Casino

Open 8am-2am Daily

804 S. Central Ave



0% Interest Big Bucks Loans

Spendable at Participating Sidney Businesses

- Available At:**
- Richland Federal Credit Union
 - Stockman Bank
 - 1st Bank



Sponsored by
the Sidney Area
Chamber of
Commerce &
Agriculture

Land/Home Packages Available in Williston!



- Turn Key... We do it all
- One loan payment
- 1 acre lots
- Credit apps ran free
- We can arrange your financing.



3820 6th Ave W • Williston
Next to WalMart Tire Center
701-774-5310





Watford City Places 2nd in Region 8

The Watford City volleyball team lost to Ray in the Region championship in New Town on Nov. 8. Above: Watford City’s Taylor Dwyer #12 spikes the ball over the net during the Region 8 Tournament in New Town. The Wolves defeated the Stanley Blue Jays 17-25, 25-23, 25-18 and 25-20 in the semifinal game. (Photo by Kathy Taylor)

West Side School Holds Book Fair November 14 - 16

Sidney Elementary School will have its annual Book Fair, Nov. 14 - 16, at the West Side School Library, 1100 5th street SW. The Book Fair will be open during regular school hours, as well as from 3 - 6 PM Wednesday, Nov. 14 and 3 - 7:30 PM Thursday, Nov. 15. The fair ends at 10:00 A.M. Friday.

Profits from the Book Fair will go to the West Side Library Fund.

This reading event will offer students, parents and teachers the opportunity to see the latest works by popular authors and illustrators of books for children and young adults. Along with winners of state and national awards, the Book Fair will present hundreds of titles selected to excite and motivate students to become lifelong readers. Special attention is given to find books that will appeal to the emergent, the experienced and the reluctant reader.

All parents of Kindergar-

ten, Preschool and younger children are invited to attend, as there will be many selections just right for those age levels, too.

Ron and Barb Scherry, well-known educators in elementary education in Montana before taking over Great Northern Book Company, will be doing book talks with students Wednesday morning, and will be available throughout the Book Fair to give advice on reading selection.

For more information, contact librarian Dawn Greenwood at West Side Elementary School. 406-433-5001, ext. 105.

Thank You

The Sidney Public School’s Activities Office would like to express its thanks and gratitude to all the members of the Community, and the members of the Sidney Area Chamber of Commerce, that worked so hard in the past few weeks in the City of Sidney’s hosting of the Eastern A Divisional Cross Country Meet at the Sidney Country Club, and the C Divisional Volleyball Tournament at Sidney High School.

The community, and its efforts as hosts of these events, received much positive comment at both venues, and the efforts of the people involved were much appreciated by our fans, parents, and athletes, too.

Special thanks to those members of the Chamber of Commerce who supplied dinner to the volleyball teams on Thursday evening, and supplied the Hospitality Room on all three days... the C volleyball committee was very appreciative, and collectively look forward to coming back to Sidney next year for the event.

We truly live in a special town with special people!
- The Sidney Public School’s Activity Office

Public Notification of Sex Offenders Residing In McKenzie Co.



Samuel Medina

as Sexually Violent Predator - Caution
ND - Status: Registered, ND - Risk level: Undetermined

Mr. Justin D. Davis is a Sex Offender in the State of Montana. Mr. Davis resides at 9964 Highway 73, Mandaree, ND. Mr. Davis has a 2004 conviction in the State of Montana for Sexual Assault.

MT - Status: Inactive, MT - Risk level: Tier level 0

ND - Status: Registered, ND - Risk level: Undetermined

Mr. Samuel Robert Medina is a Sex Offender in the State of Montana. Mr. Medina resides at 104 14th St NW Lot 1, Watford City, ND. 58854, first Motor Home on Right hand Side as you enter the driveway. Mr. Medina has a 1996 conviction in the State of Montana for Sexual Intercourse without consent.

MT-Registered, MT- Risk Level – Non - Exp. , MT – Lists



Justin Davis



NOW FAMILIES CAN SHARE EVERYTHING. ONLY WITH VERIZON.

SHAREEverything™ Plan

Unlimited TALK • Unlimited TEXT
Shareable DATA on up to 10 devices
• Use your smartphone as a Hotspot at no extra charge

4G LTE
Samsung Galaxy S™ III
• Vivid 4.8" HD Super AMOLED™ display
• Android™ OS 4.0 Ice Cream Sandwich
• AllShare™ Play, Share, Shot, S Beam™

\$199.99
\$199.99 2-year price with new 2-year activation



120 East Main
Sidney, MT 59270 • 406-433-4370
ELECTRICLAND • 101 S. Merrill Ave
Glendive, MT 59330 • 406-377-3645

Activation fee/line: \$35. IMPORTANT CONSUMER INFORMATION: Subject to Card, Agmt, Calling Plan, rebate form & credit approval. Up to \$350 early termination fee/line & add'l charges apply to device capabilities. Unlimited calling for directly dialed, long calls between individuals. Offers & coverage, varying by svc, not available everywhere; see vzw.com. Limited time offer. Rebate debit card takes up to 6 wks & expires in 12 months. ©2012 Samsung Telecommunications America, LLC. Samsung, the Samsung and Galaxy S are both registered trademarks of Samsung Electronics Co., Ltd. 4G LTE is available in more than 400 markets in the U.S. LTE is a trademark of ETSI © 2012 Verizon Wireless.

*Opening Nov. 23
Clean Friday!*



Margies Car Wash
300 14th St. SE

Truck Rt. & 2nd St S.E., Sidney
2 Automatic Bays • 7'1" height
2 Oversized Hand Wash Bays

*Gift & Fleet
Cards On Site*
\$20. \$50. \$100 • Perfect Stocking Stuffers
or at B&B Builders, Inc.
108 2nd St. N.E., Sidney • 406-482-4401

New FCS Agent at the Richland County Extension Office

By Ashley Harris

The Richland County MSU Extension office announced that they have hired a new Family and Consumer Sciences agent. Ludmila Keller, graduate of Binghamton University, had been hoping to get an extension job. When asked why an extension job she replied, “It’s such a great opportunity to work with a community and to interact with the residents.” So when she saw an opening here in Sidney, she immediately got more information.

Keller’s main interest has always been in nutrition, which is why she decided to study it. She likes that she can take everything she learned and apply it to a community. She enjoys running, dancing, and especially likes Zumba. Keller also mentioned she loves spending time with her pets. Her dog, Gatsby, is a rhodesian ridgeback–lab mix with a happy go lucky attitude, while her cat, Loretta, is very grumpy.

“I’m looking forward to getting to know the community, local organizations, and businesses and find out what programs they would like to see started,” Keller said when asked what she hopes to accomplish as the FCS Agent. She realizes the issues of obesity, nutrition, and especially food costs aren’t only a national issue, but a real issue in our area due to the oil industry.

Keller is currently working on her Masters of Public Health Degree while finishing up her position as Research Assistant for Women’s Health at Virginia Commonwealth University. She also currently volunteers as a nutrition educator at a local free clinic, advising people on proper nutrition.

“I’m really excited. I’ve been to Sidney once and met a lot of people. I’m looking forward to meeting the community and helping them start the programs they would like to see happen,” stated Keller.

Keller is slated to start work November 13th. She is taking Judy Johnson’s old position, after she retired last summer.



Above: Keller while visiting her brother in Vienna, Austria this last September. Inset: Keller enjoying the outdoors in at her friend’s home in Virginia last year.



Okaidja & Shokoto Performs in Sidney

Okaidja & Shokoto provided an energetic evening of entertainment last Thursday at the Sidney Middle School. The mixture of song, dance and drums, along with a question and answer session, provided concert goers a glimpse of the African Diaspora. Okaidja & Shokoto was the third performance in this season’s Northeastern Arts Network series. The next concert is “Bottom Line Duo” January 31, 2013.

America Recycles Day

Fellow Montanans,
This November 15 will be the 15th anniversary of America Recycles Day! This day is an opportunity to recognize the daily decision we can all make to save energy and resources by recycling resources back into our economy.

There will be community events in Shelby, Helena, Miles City, Missoula, Lincoln, and Dillon. Additional events can still be posted at AmericaRecyclesDay.org or through RecycleMontana.org. A dozen Montana schools are competing in this year’s national Recycle Bowl from October 15 to November 9, with the school recycling the most per-capita guaranteed to win \$1,000, with an additional opportunity to compete nationally for funds to purchase recycling bins.

This year has seen improved recycling across the state, from electronic recycling events along the Hi-Line to a first-time plastics recycling event in Lewistown. Communities across the state have seen expanded options to recycle priority items such as e-waste and traditional recyclables through both events and expanded public and private services.

Visit Recycle Montana for more details about America Recycles Day events, the Recycle Bowl results, and recycling in Montana at RecycleMontana.org or (406) 461-9106. We also work to provide recycling education program for schools across the state.

Happy America Recycles Day Montana!
Submitted by Mark Nelson

WINTER IS COMING! WE HAVE THE SOLUTION!

SUB ZERO SOLUTIONS CABIN CLOSEOUT!

IN STOCK
INSUL-SKIRT
VERY, VERY EASY TO INSTALL
FULL SKIRTING KITS AVAILABLE!

CHECK OUT OUR EXPANDED PARTS DEPARTMENT!



GREAT SELECTION OF NEW & USED RVs

HURRY IN FOR THE BEST DEALS!



COATES RV
SINCE 1938
WILLISTON

Family Owned Since 1938
321 Gate Ave. • Williston, ND • 701.572.2250
coatesrvnorthdakota.com

Mule Deer Production Remains Low

Submitted by ND FWP
Aerial observations during the North Dakota Game and Fish Department's fall mule deer survey indicated production in 2012 was about the same as last year's record low.

Biologists who accompanied pilots in fixed-wing planes counted 1,224 (1,055 in 2011) mule deer in the October survey. The buck-to-doe ratio of 0.37 (0.47 in 2010) was similar to the long-term average of 0.43 bucks per doe, and the fawn-to-doe ratio of 0.59 equaled the lowest fawn-to-doe ratio since the demographic survey began in 1954. The long-term

average is 0.92 fawns per doe.

Bruce Stillings, big game supervisor in Dickinson, said mule deer densities in the badlands haven't been this low since 1996. "The three consecutive severe winters from 2008-11 were devastating to our mule deer and pronghorn populations," Stillings said. "These winters not only greatly reduced overall mule deer abundance due to winter-related mortality, but led to poor fawn production. Three years of few young animals entering the population has resulted in an aged population with few prime-aged breed-

ing females."

Winter 2011-12 was one of the mildest on record, but Stillings said it is likely the reproductive condition of the surviving females was still poor after being stressed for as many as three years.

"This summer was extremely dry, leading to reduced vegetative growth needed for fawn concealment and health of the doe," Stillings added. "An aging population and poor fawning habitat conditions resulted in another year of poor fawn production."

According to Stillings, no doe harvest is the first step needed to encourage popu-

lation growth, and another mild winter is needed to help this year's fawns survive until adulthood.

"A spring and summer with normal precipitation in 2013 would go a long way to promote habitat conditions more favorable for fawn survival leading to population growth," he added.

The fall aerial survey, conducted specifically to study demographics, covers 23 study areas and 293 square miles in western North Dakota. Biologists survey the same study areas in the spring of each year to determine a population index.



First Year Hunter
First year hunter Jace Johnson shot this 5x5 mule deer south of Sidney using a .243 rifle. (Photo by Heather Johnson)

HELP WANTED

McKenzie Building Center, Inc.

Always Your Trusted Partner - Since 1934

ACCOUNTANT/BOOKKEEPER FULL OR PART TIME

Experienced full charge bookkeeper/accountant to perform a variety of necessary office accounting tasks including data entry, general ledger, accounts receivable posting and accounts payable remittance preparation, checking purchase orders against delivery receipts, interacting with vendors, processing charge account applications to set up credit lines for customers, ability to close the monthly books, perform bank and daily deposit reconciliations, and perform all necessary accounting duties.

Please demonstrate working knowledge of QuickBooks or other accounting software and have verifiable experience.

Work full time or part time. We are an equal opportunity employer and will accommodate your family needs to allow you flexible work hours working from 20 to 40 hours weekly.

Salary negotiable based on your experience.

Please fill out the **JOB APPLICATION FORM** which you can print online by going to our website: www.McKenzieBuildingCenter.com and then bring it into the store or send it in the mail to the address below on the website or in this ad in order to be considered for an interview.

\$1000 BONUS IF WE HIRE YOU!

McKenzie Building Center, Inc.
P.O. Box 642
1504 4th Ave NE
Watford City, ND 58854
www.McKenzieBuildingCenter.com
701-444-3665



Store Hours
Mon - Fri: 7:00 a.m. - 5:30 p.m.
Sat: 8:00 a.m. - 12:00 p.m.
Sunday: Closed

Pieces OF THE PRAIRIE

PHOTOGRAPHY & GIFT SHOW

NOVEMBER 23RD, 2012
12:00 NOON - 9:00 PM
LONG X VISITOR CENTER/PIONEER MUSEUM

Enjoy a relaxing evening of wine, music, and shopping.

Pride of Dakota Food & Wine Tasting
Noon - 4 pm

Music, wine, and hors d'oeuvres with Jessie Veeder
5 - 9 pm

Photography and handmade gifts from four Western North Dakota women:

Jessie Veeder Scofield with Veeder Ranch Photography
Megan Pennington with Megan's Red Barn Gifts
Lindsay Wingerter with LMW Designs
Cheyanne Maki with Hang it on the Line

Part of the proceeds will benefit the Pioneer Museum of McKenzie County

When the going gets tough, the tough get a RAM!

\$32,049*
2012 Ram
Big Horn
Stock# 18814

\$35,108*
2012 Ram 1500
Outdoorsman
Stock# 19203

BIG FINISH 2012
DODGE CHRYSLER Jeep

Ryan MOTORS
1212 W. 2nd St, Williston

701-577-1111
WWW.DRIVERYAN.COM
*After Rebates and Ryan Discount

Burke, Divide Counties Designated as Primary Natural Disaster Areas

Submitted by **Dan Janes, Communications Coordinator**
USDA Farm Service Agency

Agriculture Secretary Tom Vilsack has designated Burke and Divide counties in northwest North Dakota as primary natural disaster areas due to damages and losses caused

Maximize Your Pivot \$\$\$ Irrigation Workshop

This past growing season came with several issues for growers from getting the crop planted in dry conditions to quality issues then having again dry conditions. Crop rotation and diversity are considerations producers must think about to while managing their farm operation. One of the biggest question marks in irrigation is how to achieve consistency in crop management and yields along with maintaining quality. To address some these questions, an irrigation workshop has been developed emphasizing research taking place in the region and specific management practices. The workshop will be held on Tuesday, December 18th, at the Williston Research Extension Center (Ernie French Center) starting at 9:30 a.m. (CST).

The workshop will start with a talk on soil health issues of salinity and alkaline from Chris Augustin, NCREC Soil Health Area Extension Specialist. Then discussion will switch to weed herbicide resistance and how rotating mode of actions will slow the resistant race with weeds by Jeff Stachler, NDSU Weed Scientist. Tom Scherer, NDSU Extension Ag Engineer, will present on how to measure and calibrate flow pressure on pivot so they are sit up correctly to wrap up the morning session

Following lunch, Chet Hill, Area Extension Ag Diversification Specialist, will review sprinkler uniformity and an overall spotlight of irrigation in the region. Mike Hove with the ND State Water Commission will give an update on the water permitting process and the real time metering monitoring systems being tested in the state. And finally, Tyler Tjelde, WREC Irrigation Agronomist will provide an update on the NessonValley irrigation research site and highlight a couple research projects on water management.

There will be a noon lunch sponsored by Mountrail-Williams Electric Cooperative. Mon-Kotawill be sponsoring the breaks during the workshop.

If you have any further questions, please call Chet Hill, NDSU Extension Area Ag Diversification Specialist, at (701)774-4315.

by the recent drought. The complete list of primary natural disaster areas includes Barnes, Benson, Billings, Bowman, Burke, Cass, Dickey, Divide, Eddy, Foster, Golden Valley, Grand Forks, Griggs, Logan, Lamoure, McIntosh, Nelson, Ramsey, Ransom, Sargent, Slope, Stark, Steele, Stutsman, and Traill.

In addition, farmers and ranchers in Mountrail, Renville, Ward and Williams counties now qualify for natural disaster assistance because their counties are contiguous to the primary natural disaster area. Additional contiguous counties from previous disaster designations include Adams, Cavalier, Dunn, Emmons, Grant, Hettinger, Kidder, McKenzie, Mercer, Morton, Pembina, Pierce, Richland, Sioux, Towner, Walsh and Wells Counties.

Secretary Vilsack's announcement comes as a result of a new streamlined disaster designation process unveiled this year. "These automatic designations based on drought put us several months ahead of where we would normally

be in the disaster assistance process," said Aaron Krauter, State Executive Director of Farm Service Agency in North Dakota. "For counties that haven't received an automatic designation, our County Emergency Boards are looking very closely at losses to see if they meet the criteria for secretarial disaster designation outside of the fast track process."

FSA's emergency loans are specifically targeted towards established farm operators who have suffered significant losses due to a disaster and are unable to receive credit from commercial lenders. In addition to providing low interest loans, FSA works with producers to develop a farm plan and get connected to a financial management training program. Farmers or ranchers who suffer at least a 30% loss to production or had a physical loss to livestock, livestock products, or other farm property may be eligible for emergency loans. Loan funds through FSA may be used to restore or replace essential property, pay production costs for the disaster year, reorganize the farming operation or refinance certain debts.

January 15 is New Deadline for Pheasant Release Applications

Montana landowners interested in raising and releasing ring-necked pheasants next year have until Jan. 15, 2013 to submit an application to the state wildlife agency.

This new application deadline is among several recommendations made by a citizens' advisory council and now a part of Montana's Upland Game Bird Enhancement Program's strategic plan.

"The new deadline is aimed at improving the flow

of program logistics," noted Debbie Hohler, Montana Fish, Wildlife and Parks' UGBEP's program biologist. "Once the release sites are evaluated by wildlife biologists, FWP can authorize the number of pheasants for release at a time that coincides with when pheasant raisers are ordering their chicks."

Under FWP's Upland Game Bird Release Program, landowners who attempt to establish pheasant populations in suitable habitat can be reimbursed for rais-

ing and releasing pheasants.

Landowners may apply annually for up to five consecutive years to establish pheasants. Projects must comprise at least 100 contiguous acres of land and contain a combination of habitat components including cover and food that upland game birds need to survive.

Lands enrolled in the pheasant release program must allow free public access to hunt upland game birds

during the season the releases take place.

Mail applications by Jan. 15, 2013 to: FWP Wildlife Bureau, Attn: UGBEP Pheasant Releases, P.O. Box 200701, Helena, MT 59620-0701. Program pheasants are usually be released between Aug. 1 and Sept. 15.

Hunting preserves, lands that host a commercial hunting enterprise and lands where hunting rights are leased or paid for are not eligible.

Thank You

To all of you
for voting in
the general
election.

*Richard
Cayko*

Paid for by Richard Cayko, East Fairview, ND

MonDak Area Stockgrowers

Annual Meeting & Dinner

Monday, November 19 • Sidney Country Club
Social at 5:30pm • Meeting & Dinner at 6:00pm

Come have a voice in your industry and learn about current issues facing the beef industry. We need you to make our association work - your input, your ideas, and your participation will keep this industry strong & united.

Dinner is \$15 per plate for anyone who renews dues or becomes a new member, \$20 per plate for all others.

Door Prizes

Guest Speaker:
Ms. Jude Capper
"Despite the drought, US beef production is green."

Annual Awards & Officer Elections – if you are interested in serving as an officer or director please contact Keith Dynneson
Meeting and Dinner sponsored by Sidney Livestock Market Center.
Thank You!

Christmas Tree of Remembrance

The service of remembrance will be on
Sunday, Dec. 2 at 1 p.m. in
the Chapel of Fulkerson
Funeral Home in Sidney.

Anyone who has lost a loved one is invited to attend the service. A tree will be set up and decorated with ornaments brought by family members. The ornaments may simply be a small picture, name or favorite ornament. These may be dropped off ahead of time should you not be able to attend or bring the ornament when you attend the service.
Refreshments served following the service.

Fulkerson Funeral Homes
315 Second St. NW, Sidney, MT
406-488-2805
email: ffh@fulkersons.com • www.fulkersons.com

MSU Soil Expert Offers Fertilizing Advice For Drought-Affected Farms

Submitted by MSU News Service

The extremely dry conditions in much of Montana may affect how producers manage nutrients for crop production next year, according to a Montana State University Extension soil expert.

There are a few recommended differences between nutrient management during drought conditions and normal conditions.

“The nutrients available for the next season’s crops may be either higher or lower than normal because the amount removed by the drought-stressed crop may be different than in a normal year and soil-nutrient cycles are altered,” said Clain Jones, Extension Soil Fertility specialist in the Department of Land Resources and Environmental Sciences at Montana State University.

There is an assumption that fewer nutrients are removed by the lower yields from drought stressed crops. However, some crops may have been harvested as forage rather than as grain. Harvest of the whole plant may remove more nutrients from the field than a grain harvest. Alternatively, if a crop is considered a total loss and not harvested at all, no nutrients are removed from the field.

The amounts of nutrients removed are more a function of the size of the harvest than of possible changes in grain or straw nutrient concentrations caused by drought.

Nitrogen removal by harvest is only one factor affecting next year’s available nitrogen supply.

Decreased downward nitrogen movement out of the rooting zone also contributes to potentially higher than normal fall nitrate-nitrogen levels. If there is substantial fall to mid spring rainfall, this residual nitrogen is susceptible to over-winter leaching loss, especially in coarse soil or soil with cracks.

“No-till slows decomposition of the plant residue, making less residual nitrogen available for leaching and therefore helps retain the nitrogen on the site,” Jones said. “A volunteer grain crop or winter weeds can help capture and hold some of the residual nitrogen.”

Phosphorus and potassium levels are largely influenced by: Reduced plant uptake, the harvest timing, the harvest amount, and which part of the plant is removed.

Harvesting wheat grain removes about 80 percent of the phosphorus taken up by the crop, with the remainder staying on the field if straw is not removed. Harvesting the wheat as forage at early heading removes only half as much phosphorus.

In contrast, most of the potassium taken up by wheat is in the leaves and stems and very little is removed in the grain. If wheat is harvested for forage at mid-heading then more potassium is removed than when wheat is harvested for grain.

The recycling of potassium from plant residue generally recharges soil potassium levels. However, lack of rain reduces release of potassium from plant material, causing reduced potassium soil test levels.

Jones advised producers to not overreact to low soil test potassium.

“The potassium is temporarily tied up in plant residue but most will become available to the next crop,” he said.

Soil sampling is the best tool available to help make fertilizer rate decisions, especially since nutrient removal estimates are not available for all crops at all stages of harvest.

Spring soil tests are a good gauge because available nutrients change from fall to spring. If possible, sample to a two to three foot depth to determine residual nitrogen. Sampling at six-inch increments can help determine where the nitrogen is located in the soil profile to evaluate risk and magnitude of leaching loss from the root zone.

Jones noted that plant nutrient uptake tends to be more variable across a field under drought conditions, so taking more samples can be helpful.

“Even if soil samples are available from the prior year, samples taken after drought provide a better basis for next year’s fertilizer needs because drought can change nutrient availability,” said Jones.

Also, analyzing soil samples in a drought year and comparing the results and yield records with ‘normal’ years can help interpret tests in future dry years.

Fertilizer rates should be based on available nutrients as indicated by soil tests and reasonable yield predictions, which are difficult under normal moisture conditions, let alone during drought cycles, Jones said.

Nitrogen credit from a legume crop grown for grain is not largely influenced by drought during the legume rotation. It can vary from zero to about 20 pounds nitrogen per acre, being at the upper end of this range when legumes have been grown several times in rotation.

Nitrogen credit should be at the low end when the spring following the legume crop is dry, which makes water, rather than nitrogen, the limiting factor for grain growth and delays the release of nitrogen from the legume residue. Phosphorus and potassium can be applied in the fall.

However, nitrogen is best applied near planting to avoid overwinter loss and adjust for overwinter changes. Nitrogen levels can be adjusted with top-dressing if moisture conditions improve after planting. This will minimize over- or under-fertilizing, which is costly to producers in drought as well as normal years.



Thank You!

I would like to thank everyone for their support and votes during the general election.

In grateful appreciation,
Yvonne Volkman

Paid for by Vote Volkman Campaign, 117 9th Ave. SW, Sidney, MT

Red Roof Presentations to Feature Maxine Trotter At Chateau de Mores State Historic Site, November 17

North Dakota native Maxine Trotter will lead a fun and thought-provoking presentation and group discussion entitled “Change, A Penny For Your Thoughts” at the Chateau de Mores State Historic Site in Medora on November 17 at 2 p.m. (MT).

This presentation kicks off the winter season Red Roof Presentations programs, and will include both a presentation and group discussion of changes that have occurred in the daily lives of people over the past 150 years. Trotter will present both artifacts and photographs as part of the discussion encouraging participants to interact and compare their lives with those who lived here as much as 150 years ago. The program is free and open to the public, light refreshments will follow.

Maxine Trotter was raised and educated in North Dakota. She taught elementary and junior high students for 36 years; 28 of those years were in Billings County, ND. Maxine has presented many educational workshops through Minot State, NDSU, and UND with the North Dakota Geographic Alliance, ND Reading Council, and ND Social Studies. Maxine’s hobbies include history and geography, and she works as an interpreter for the Chateau De Mores State Historic Site, Medora, ND.

Safer Winter Driving Starts Here!

 <p>2012 Ford Explorer XLT, AC cruise, tilt, power locks, windows, heated leather, P/S, rear cam, reverse sensor, dk. blue, 16,673 mi. #5877 List \$37,995 Sale Price \$35,341</p>	 <p>2012 Ford Explorer XLT, leather, AC, power locks, windows, dual heat/AC, power lift, 1 row reverse sensor, 628 mi., MI SOLD! List \$37,995 Sale Price \$39,450</p>
 <p>2011 Ford Ranger S/C XLT red, 4.0V6, 6 speed manual, air conditioning, tilt, cruise, power locks, windows, CD trailer tow, 3,208 mi. #5866 List \$26,995 Sale Price \$23,101</p>	 <p>2009 F150 CC XLT 4x4, 5.4 V-8, auto, power windows, locks, AC, cruise, tilt, TI, CD, P/M, 63,751 mi. #5878 List \$26,995 Sale Price \$25,233</p>
 <p>2008 Lincoln MKX AWD AC, cruise, tilt, power windows, locks, CD, leather heated/cooled power seats, remote start, sunroof, silver, 61,223 mi. #5873 List \$27,195 Sale Price \$25,631</p>	 <p>2005 Ford Explorer XLT tan, V6, automatic, air conditioning, tilt, cruise, power windows, locks, 147,725 mi. #5849 List \$8,495 Sale Price \$6,140</p>




Eagle Country Ford
Experience the Eagle Country Difference!

215 East Main • Sidney, MT
433-1810 or 1-800-482-1810

Mon. - Fri. 8 a.m. - 5 p.m.
Sat. 9 a.m. - 1 p.m.

 <p>2008 F250 CC XLT power locks, windows, AC, cruise, tilt, 5.4 gas, blue, auto, 43,095 mi. #5872 List \$27,995 Sale Price \$26,206</p>	
--	---



Duane MITCHELL
Richland County
COMMISSIONER
District #3
A positive impact for Richland County

Paid for by Mitchell for Richland County Commissioner, 1102 Southview Lane, Sidney, MT 59270

Thanks for your support and for voting. My goal is to serve the entire county and all aspects of it.



RED Annual Meeting

Richland Economic Development held its annual meeting Monday, November 5 at the Sidney Country Club. Above, RED Executive Director Leslie Messer talks about the accomplishments of the organization. Right, a capacity crowd, including, L to R, Williston Economic Development director Tom Rolfstad, state representative Matt Rosendale and Don Steinbeisser, Sr. listen intently to Messer's presentation.



Advisory Board Meetings Set

Outdoor enthusiasts are invited to attend a North Dakota Game and Fish Department advisory board meeting in their area.

These public meetings, held each spring and fall, provide citizens with an opportunity to discuss fish and wildlife issues and ask questions of their district advisors

and agency personnel.

The governor appoints eight Game and Fish Department advisors, each representing a multi-county section of the state, to serve as a liaison between the department

and public.

Any person who requires an auxiliary aid or service must notify the contact person at least five days prior to the scheduled meeting date.

Comment on this story or share on Facebook at

Roundup
WEB.COM

**Who's watching
your business?**

RTC leases and installs
Panasonic HD Cameras.

Monitor your home, business
or outdoor facilities.

Call 1.888.862.3115 for details!

RTC
www.RTC.coop



Visit our Model Homes and discuss with our sales people your opportunity to own vs rent.

**Iseman
Homes**
YOU'RE HOME, NOW.

*with approved credit

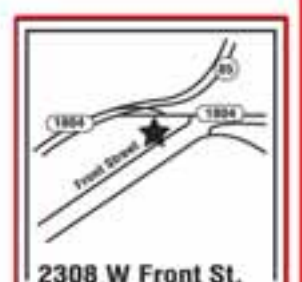
701-572-2590
2308 W. Front St.
Williston, ND 58801

*Iseman's
Stone Meadows
Sub-division*

Land and Home Packages
including water, sewer, electric, driveway
and sidewalk all on a one acre lot.

Packages starting at
\$970⁰⁰* a month
plus Taxes and insurance

Hours:
Mon-Fri • 9-6
Sat • 9-4



Family Practice Care Clinic

MONDAK

FAMILY CLINIC & PHARMACY



An Outreach Service of
SIDNEY HEALTH CENTER

Call to Schedule an Appointment Today!

742-5261

Clinic & Pharmacy Hours: 9am - 5pm • M, T, TH, F
304 S Ellery Ave • Fairview, MT

Come See Us After
The Lighting Of The
Bridge & Fireworks

For More Information Call:

406-742-5224

Water Hole #3

Fairview,
Montana

Kick Off The Holiday Season

Lighting Of The
Fairview Bridge

Saturday, Nov. 17

Huge Lighted
Ornaments
Will Decorate Sundheim
Park starting at 4 p.m.

Fireworks
Display 7 p.m.

Have Fun at the
Bridge Lighting

Mon-Kota, Inc.

Fertilizer & Irrigation
Sales & Service



Fairview, MT
701-844-5300

Have Fun At The
Lighting Of The
Bridge & Fireworks!

HURLEY'S

OILFIELD SERVICES

• Potable Water • Sewer System • Loaders

• Communications • Backhoe • Trucking

• Skid Houses • Porta Potties

406-742-5312 • Fairview, MT

Have Fun at the
Bridge!

Holiday Open House

9 a.m. - 3 p.m., Wednesday, Dec. 12

Goodies & Door Prizes
Please bring items for the Food Bank
Visit with Santa from 1-3 p.m.!



Merchants Bank

216 S. Ellery Ave., Fairview
(406) 742-5203



Enjoy The Lighting
Of The Bridge!

I

INTERSTATE
INDUSTRIAL

Steam Cleaning & Painting, Inc.

Marty Shaide

Fairview, MT
(406)-742-5634 • (406)-489-1441

IIS

SERVICES, INC.

Dan Cayko
(406)-480-5665

Marty Shaide
(406)-489-1441

Fairview, MT
(406)-742-3630

Stop In & Warm Up !

Dining
Room

Open:
Sun - Thurs. 5-9 p.m.
Fri. & Sat. 4 p.m. - 10 p.m.

Prime Rib
Served
Every
Friday &
Saturday
Night

Happy
Hour
5-7 p.m.
Mon-Fri



Saloon &
Casino
Open
10am-2am
Daily

401 Ellery Ave • Fairview, MT
(406) 742-8110

Please Enjoy the
Lighting of the
Fairview Bridge!

TRI-COUNTY IMPLEMENT

Sidney, MT • 2429 W. Holly
406-488-4400 • 1-800-624-6540
Visit our web site at tri-cnty.com



CASE IH

CONSTRUCTION, INC.

Fairview, MT 59221
Office: 406-742-5549

We Encourage Everyone
To Attend The Lighting
Of The Bridge & The
Fireworks



NEU

CONSTRUCTION, INC.

Fairview, MT 59221
Office: 406-742-5549

Stop In Before...or After
The Fun At The Bridge!
Enjoy the Fireworks!

Pizza • Burgers
Beer & More



FREE
Ice Cream
with Purchase

Open at 4:30 - Tues. - Fri.
Open at 2 p.m. Sat. & Sun.

McKenzie Building Center, Inc.

Always Your Trusted Partner - Since 1934 - Watford City, ND - (701)-444-3665
Lumber, Flooring, Appliances, Cabinets, Windows, Doors, and More!

FALL HOME IMPROVEMENT SALE

IMPROVE YOUR HOME - SAVE BIG NOW - EVERYTHING FOR YOUR HOME

FARM AND RANCH SUPPLIES

MCKENZIE BUILDING CENTER
BOOM TRUCK DELIVERY

RAILROAD TIES



8"X8"X8' **\$12.99**

TREATED POSTS
NOT POINTED



6"-8"X10' **\$20.99**

PROPANE HEATER
CONTRACTOR SERIES



HEATS UP TO 3,000 SQ. FT. **\$189.99**

WEED DRAGON
PROPANE TORCH KIT



\$57.95



CONTRACTOR SPECIALTY TOOLS AND SUPPLIES



Benjamin Moore

WE HAVE THOUSANDS OF COLORS

DEWALT TOOL SPECIAL! SAWS, ROUTERS, GRINDERS, DRILLS, TABLE SAWS, ETC.



18V CORDLESS SAW
\$244.95

SEE US FOR YOUR SPECIALTY TOOL NEEDS

WIDE VARIETY OF RHINO-TOOLS



FROM \$4.99

shop-vac
18 GALLON CAPACITY



\$149.99

TITAN - COMPLIANCE FALL PROTECTION KITS



\$119.99

ELECTRICAL AND PLUMBING SUPPLIES

LAMP HOLDER WITH PULL CHAIN



LEVITON
\$2.79

NM SHEATH WIRE



12-2 250'
REG \$89.99
NOW \$78.00

OUTDOOR LIGHTING LIGHT FIXTURES



DESIGN HOUSE
FROM \$8.99

WATER HEATER REPAIR PARTS, ELEMENTS, FITTINGS, THERMOSTATS

WE CAN SPECIAL ORDER WHAT YOU NEED

NOW STOCKING PEX TUBING



1/2" X 100' **\$27.99**

Thermo Tech



BAY AND SLIDING WINDOWS PATIO DOORS

FREE ESTIMATES AT LOCATION OR IN STORE

From \$99

WIN A 55" LCD HD T.V.



SANYO

WITH ANY \$20 PURCHASE OR MORE
DRAWINGS HELD MONTHLY
ENTER AS OFTEN AS YOU LIKE



CUSTOM KITCHEN CABINET SALE

FREE ESTIMATES AT LOCATION OR IN STORE

SPECIALS - BUDGET BUYS - SAVE BIG

"DUMP BIN" - SUPER SAVINGS



MISC. HARDWARE, FASTENERS, BRACKETS, CAULK, PAINT, BRUSHES, PAINT SUPPLIES, MISC. ASSORTMENTS, AND MORE!

FROM 49¢

PUSH CARPETING



WE CAN INSTALL FOR YOU
STARTING AT \$9.99 YD

VINYL FLOOR PLANKING



STARTING AT \$.99 SQ. FT.

YOUR OWN CREDIT LINE



0% INTEREST
APPLY TODAY!

SUBJECT TO CREDIT APPROVAL

RV WINTERIZING SALE

HEAT TAPES
FROM 9' TO 60'



WRAP-ON
FROM \$29.99

SPACE HEATERS



FROM \$39.95

POLYFOIL "DOUBLE BUBBLE" FOIL FACED INSULATION



48" WIDTH
\$2.79 L/F

RV WATER FILTERS 2 PACK
LASTS UP TO 6 MONTHS



\$32.99

SMOKE AND CO ALARM



Kidde
FROM \$8.99

FREE \$20 MERCHANDISE
WITH \$200 PURCHASE
McKenzie Building Center, Inc.

FREE \$100 MERCHANDISE
WITH \$1,000 PURCHASE
McKenzie Building Center, Inc.

Phone: (701)-444-3665
Fax: (701)-444-4001
Highway 23 East, 1504 4th Ave NE
Watford City, ND 58854
Mon, Tues, Wed, Fri: 8 AM - 6 PM
Thurs: 8 AM - 8 PM
Sat: 8 AM - 1 PM
Sunday: Closed



MBCI-50

www.McKenzieBuildingCenter.com

SHOP SIDNEY

The MonDak Area's Best Super Shopping Center



Winners Shop In Sidney
**Win a \$100
Gift Certificate**

Each Week 'Til Christmas
Register At The Sidney Firms Listed On This Page

But Wait...There's More

- Get a 0% Loan of \$500 to \$1000
- Register to Win \$1000 in Chamber Bucks
- AND THERE'S NO SALES TAX**

**Sidney's
got it!**



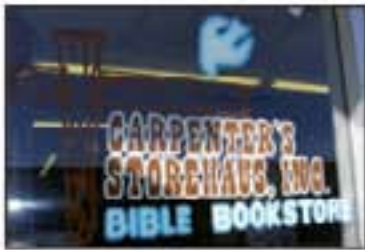
Reynold's Market



Reese & Ray's IGA



Finnicum's Furniture



Carpenter's Storehaus



John Stockhill Jewelers



Gem City Motors



Chad's Furniture



Sidney Liquor



Sunrise Music



Eagle Country Ford



Electricland/Radio Shack



High Caliber Sports & Main Appliance



Frontier



Johnson Hardware



Club Royale Casino



Trendz Salon



Farm and Home



Yellowstone Agate & Silver



Pro Build




Tri-County Implement



PATH




TIRED OF PAYING CRAZY HIGH RENT?



Own this brand new 16x80, 3 bedroom, 2 bath house for **under \$800** a month including lot rent!

Financing available with approved credit.
406-377-1258
53 Hwy 16 • Glendive, MT



Craft Brewing Has Growing Impact On Montana’s Economy

Montana’s 33 craft brewers represent a growing sector of manufacturing activity in the state, according to a new survey and economic impact study by researchers Colin Sorenson and Todd Morgan of The University of Montana Bureau of Business and Economic Research.

According to the report commissioned by the Montana Brewers Association and titled “The Economic Contribution of Craft Brewing in Montana,” the impact of the industry represents more than 430 jobs, nearly \$50 million in private-sector sales, \$9.8 million in private nonfarm compensation, \$1.8 million in government compensation and \$1.5 million in state government revenues.

Survey data collected by BBER show the brewing industry in Montana grew rapidly from 2010 to 2011. Production rose 18 percent, sales were up 20 percent, employment was up 39 percent, compensation increased 23 percent and expenditures were up 21 percent. Nearly 97 percent of Montana’s brewers participated in the survey and many reported offering a variety of employee benefits such as health insurance, retirement and paid vacations.

BBER’s study found that while the activity of craft breweries is concentrated in the more populous regions of the state, economic impacts of craft brewing extend into all regions. As of the end of calendar year 2011, there were 12 breweries in northwest Montana, seven in southwest Montana, four in north central Montana, eight in south central Montana and two in eastern Montana.

“These numbers show the tremendous potential for Montana’s breweries to continue to create jobs and wealth in Montana,” said Tony Herbert, executive director of the Montana Brewers Association. “The economic impact of the

brewing industry in Montana is large and growing, and the potential for breweries to generate more jobs, more state-wide tax revenues and more happy customers should not be underestimated.”

CWD Surveillance Continues

The state Game and Fish Department will continue its Hunter-Harvested Surveillance program during the 2012 hunting season, by sampling deer for chronic wasting disease and bovine tuberculosis from 17 units in North Dakota. In addition, all moose and elk harvested in the state are eligible for testing.

Samples from hunter-harvested deer taken in the western portion of the state will be tested from units 3A1, 3A2, 3A3, 3B1, 3B2, 3D1, 3D2, 3E1, 3E2, 3F1, 3F2, 4A, 4B, 4C, 4D, 4E and 4F.

Every head sampled must have either the deer tag attached, or a new tag can be filled out with the license number, deer hunting unit and date harvested.

Hunters are encouraged to drop off deer heads at the following locations:

- Alexander – Old School Meat Processing
- Dickinson – Dickinson Game and Fish district office,

Dean’s Meat Market

- Glen Ullin – Kuntz’s Butcher Shop
- Hazen – Hazen Meats
- Hettinger – Dakota Packing
- Kenmare – Des Lacs NWR, Lostwood NWR, Seykora’s Meat Processing
- Parshall – Myers Meats
- Williston – Williston Game and Fish district office, Martin Kirschbaum, Scenic Sports, Bickler Taxidermy, Zerr’s Taxidermy.

Moose and elk heads should be taken to a Game and Fish office.

CWD affects the nervous system of members of the deer family and is always fatal. Scientists have found no evidence that CWD can be transmitted naturally to humans or livestock.



fusionfightleague.com

SIDNEY INSANITY TWO

NOV 24

7:00 PM FAIRGROUNDS

BREAK OUT TOUR

SPONSORS: T & S Contracting Inc.
Richland Pump & Supply
Miller's Garbage Service
Lunderby Trucking

Portion of proceeds to benefit Logan Adams, an eight-year-old third grader from Fairview Montana. He is Diagnosed with Type 1 Diabetes and this is intended to help with travel and medical expenses.

TICKETS AVAILABLE AT PRO TIRE, or call Jerry at 406-489-0302
\$20 GEN • \$25 VIP GEN • FOR TABLES CALL 697-0542

BIG FINISH 2012



2013 Dodge Avenger SE

4 Door, 2.4-4cyl., Automatic, AC, Tilt, Cruise, Power Locks, Windows, UConnect Voice Command w/Bluetooth, Redline 2 Coat Pearl Paint.



#1835 Plus 5 Year, 100,000 Mile Power Train Warranty

Net Price After Rebate.....\$17,200
*must qualify for rebates



www.actionautochryslerdodgejeep.com

ACTION AUTO

For your transportation needs, call:
433-2312 • 1-800-788-2312
220 East Main, Sidney, MT



Gary McPherson
Hm: 488-7759



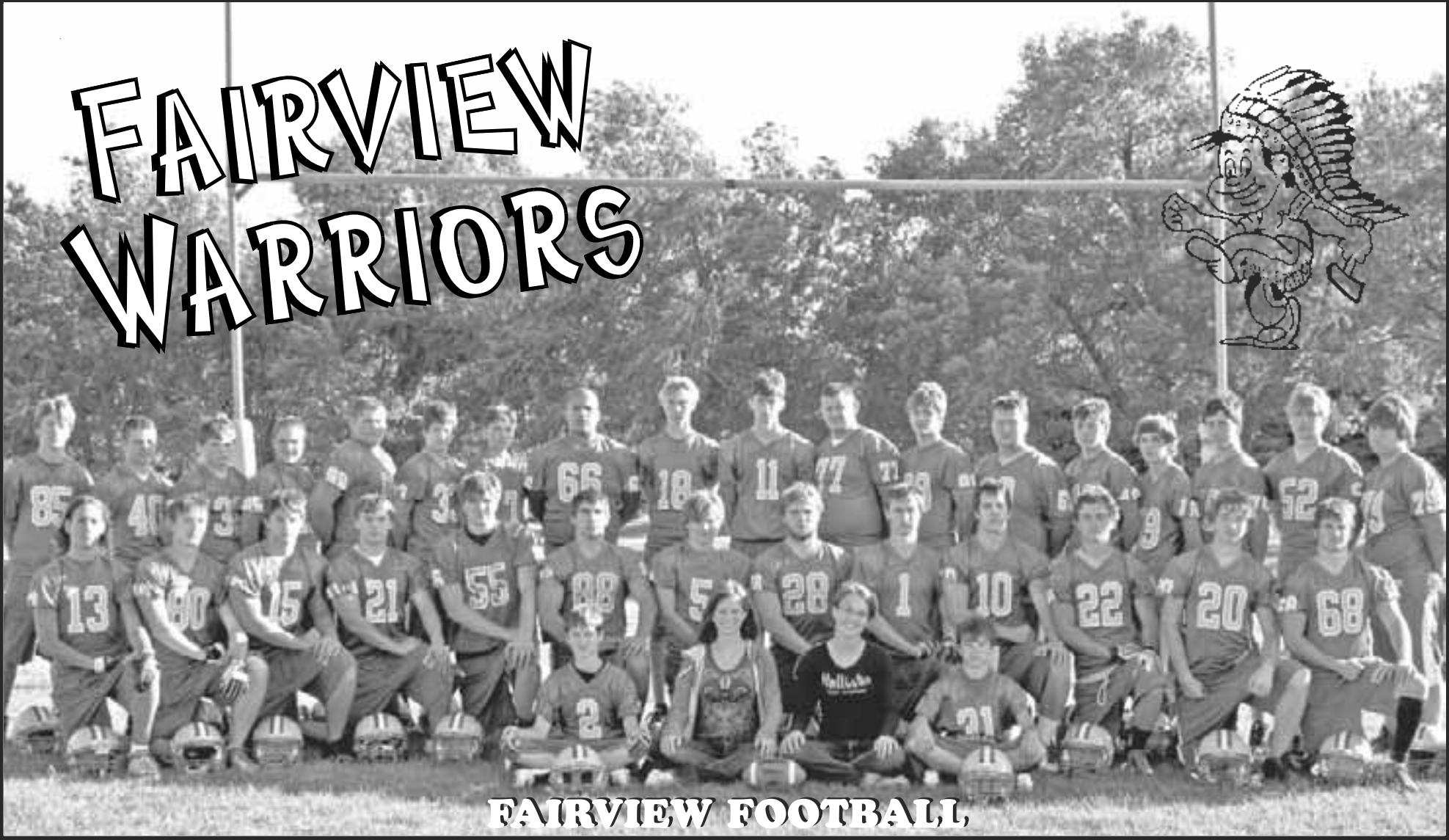
Gary Schoepp
Cell: 489-2312



Melissa Hansen
Cell: 804-941-2104

Good Luck at Semi-final Playoffs!

Fairview vs Superior at Superior
Saturday, Nov. 17 • 1 p.m.



Back Row (L-R) Nate Turner, Josh Johnson, Josh Hurley, Michael Calvert, Kordell Obergfell, Jonathon Lebsock, Monte Cayko, Austin Wicorek, Jared Gustafson, Ben Hardy, Riley Metzenberg, Justin Bieber, Donald Fugate, Brett Berry, Alex Taylor, RJ Castaneda, Dillon Karst, Dustin Rice. Middle Row (L-R) Jared Dahl, Seth Flynn, Riley Reynolds, Jordan Dahle, Jace Taylor, Logan Kjos, Kyle Shelmerdine, Cody Vitt, Jonathan Shaide, Brock Schriver, Scott Andreasen, Cody Shelmerdine, Cole Skorpil. Front Row (L-R) Mitchell Shaide, Mikaela McCall, Brittany Schneider, Cole Berry.



Merchants Bank

Expanded Hours:
Open 9 a.m.-4 p.m.
Monday thru Friday



Box 465 • Fairview, MT
406-742-5203

**SUPER
VALU**



Fairview
406-742-5441

Kilen Backhoe
Marvin Kilen & Sons

- Backhoe service
- Water systems
- Sewer & water service
- Trenching
- Pumps Sales & Service

406-798-3601
Fairview
489-1243 • 489-1426



PO Box 215- Sidney, MT
Oilfield and Pipeline
Construction
Phone
406-433-CHAZ (2429)
Fax: 406-433-2439

THE OASIS
GREENHOUSE



3-1/2 miles north of Fairview
on Highway 58
701-744-5752
oasis@midrivers.com



**BLUE ROCK
PRODUCTS CO.**
501 9th Ave NE, Sidney
406-433-3403



416 S. Ellery, Fairview
406-742-5224

IIS
SERVICES, INC.

Dan Cayko
(406)-480-5665
Marty Shaide
(406)-489-1441
(406)-742-3630 • Fairview, MT

**Bar
JV Angus**

Jim Vitt
406-798-3653
Dale Vitt
406-798-3398
Fairview, MT

**INTERSTATE
INDUSTRIAL**
Steam Cleaning & Painting, Inc.

Marty Shaide
Fairview, MT
(406)-742-5634
(406)-489-1441



Family Dining
Open 4:30 pm Tue. -Fri.
2 pm Sat. & Sun.
Fairview • **406-742-5180**

GOOD LUCK
FAIRVIEW WARRIORS!

Call 742-5261 for Your
Appointment Today!

MONDAK
FAMILY CLINIC & PHARMACY
An Outreach Service of
SIDNEY HEALTH CENTER
Hours: 9am - 5pm • M, T, TH, F
304 S Ellery Ave • Fairview, MT



904 East Main, Sidney, MT
406-482-1303
800-949-1303

Mon-Kota, Inc.
Fertilizer & Irrigation
Sales & Service

Fairview, MT
701-844-5300



Reinke
MORE RIGHT THAN RAIN



Oil Field Roads & Locations

- Reclaim Work
- Gravel & Scoria Hauling

Fairview, MT
406-742-5549
neuconst@midrivers.com



Open 10 a.m. - 2 a.m. Daily
401 Ellery Avenue
Fairview, MT
406-742-8110



Sidney Sugars
INCORPORATED
Sidney Montana

**HURLEY'S
OILFIELD SERVICES**

- Potable Water
- Sewer System • Loaders
- Communications
- Backhoe • Trucking
- Skid Houses • Porta Potties

406-742-5312
Fairview, MT

UM Professor Finds Greenland Absorbs Large Amounts Of Melt

Submitted by Joel Harper, Associate Professor, UM Department of Geosciences

University of Montana glaciologist Joel Harper will publish research findings in an article titled "Greenland Ice Sheet Contribution to Sea Level Rise Buffered by Meltwater Storage in Firn" in the Nov. 8 issue of the journal Nature.

According to the research, a large storage sink for meltwater generated on the surface of Greenland exists in a layer of old compacted snow called firn, which is up to 100 meters thick. Because some of the melt is absorbed by the firn, not all of the melt from the huge ice sheet contributes to rising sea levels, yet.

Scientists know that sea level currently rises about 3.2 mm per year, with about half of that rise comes from melting ice around the world. Researchers estimate that 20 to 40 percent of that new water comes from Greenland.

Harper led a team of researchers from the University of Wyoming, University of Colorado-Boulder and the Universite de Liege in Belgium to study the meltwater path on the Greenland ice sheet from 2007 to 2009. Funded by a National Science Foundation grant, the team set out to determine just how much of the meltwater generated in Greenland travels to the sea and what happens to the melt that doesn't.

"The melt generated from low elevations easily escapes to the ocean, but there's a large area at higher elevation where the fate of the melt is highly uncertain," Harper said. "Quantifying how melt can infiltrate and refreeze in cold snow and firn is critical to understanding sea-level changes."

The researchers spent three months spread over three summers traversing the ice sheet on snowmobiles and skis while taking measurements. They used a radar system to track water deep in the firn, drilled more than 30 ice cores and installed sensors within the ice to track the migration of

water.

They found that some of Greenland's melt can penetrate deeply into the firn, bypassing thick lenses of ice where previous water has refrozen. Since completing the field research, the team has run computer models based on their data to investigate the problem further. Their calculations quantify how much of the firn layer already has been filled by meltwater and how much additional storage remains.

Despite the fact that Greenland absorbs some of its massive melt, the firn is filling at a rate faster than winter snowfall can create more. Harper said the firn will hold an additional 322 to 1,289 gigatons of water, where 1 gigaton is equivalent to a cubic kilometer of water. Based on measurements of the melt already absorbed, the researchers were able to determine a rough estimate of how much longer the firn will continue to take melt.

"Under a range of plausible climate scenarios, filling this firn will take on the order of decades," Harper said. "It's not a year or two of heavy melt that's going to do it, but it's also not centuries. The rate that the storage sink is filled will dictate changes to the area of the ice sheet that contributes melt to the oceans."

"You can only route water into this storage sink for so long before it fills up and meltwater from higher elevations is rerouted to the oceans."

The research team's findings come at a crucial time for Greenland. Satellites have monitored the amount of melt on the ice sheet daily since 1980. These measurements show that the area experiencing melt and the duration of melt each summer have increased on average. This year was the first time since monitoring began that the entire ice sheet experienced melt, though ice cores show that this has happened on a few occasions in the past.

Despite the existence of the water storage sink in the firn layer, multiple lines of independent measurements show that Greenland has lost mass and the rate of mass loss has increased.

"Since the firn can absorb some of the surface melt, this means that understanding other mechanisms for mass loss, such as iceberg calving and melt of the nonfirn-covered areas are critically important," Harper said.

The next step is to study meltwater at the bottom of the ice sheet by drilling 1,000-meter long boreholes to take measurements beneath the ice. In August, Harper and a partner at the University of Wyoming were awarded a \$1.3 million NSF grant to investigate how the melt generated at lower elevations finds its way to the base of the ice and influences the movement of the massive ice sheet.

Fisheries Biologists Complete Fall Reproduction Survey

The North Dakota Game and Fish Department's annual fall survey shows low numbers of young-of-the-year fish in the Missouri River System, while Devils Lake once again showed exceptional numbers of young-of-the-year walleye.

Scott Gangl, fisheries management section leader, said the catch at Lake Sakakawea was poor for most species including walleye, especially considering 4 million were stocked this year. "We actually captured some 1-year-old fish that were only slightly bigger than this year's young-of-the-year," Gangl said. "The reservoir wasn't very productive this year given its rapid rate of elevation loss."

However, Gangl said production of forage fish in Lake Sakakawea has been fairly good over the last few years. "Our size structure and growth rate of our older game fish improved from a decade ago when there was a prolonged period of drought years," he said.

The Missouri River from Garrison Dam to Lake Oahe showed few young game fish or forage fish. "Fish populations in this stretch of the river are all based on natural reproduction, which was good in 2009-10," Gangl said. "We have an abundance of adult walleye and pike, but they are on the smaller side because they are only 2-3 years old. In addition, we lost a lot of forage in 2011, and poor reproduction again in 2012 continues to depress the forage base, leaving our game fish on the skinny side and growing slower than we would like."

This past spring Game and Fish personnel, along with South Dakota Game, Fish and Parks, stocked adult gizzard shad at eight sites throughout Lake Oahe. Gangl said the intent was for adult shad to reproduce and provide young-of-the-year for forage and a seed stock to rebuild the population. "We did detect some reproduction, but it will not be an overnight success," he added.

"We need a few more mild winters like last year before we see a rebuilding of the shad forage base like we had in the early 2000s."

The rapid loss of water that was witnessed this year in lakes Sakakawea and Oahe is alarming, Gangl said, but decreased system flows this fall will provide some recovery assistance.

Devils Lake showed the second highest young-of-the-year walleye catch rate on record, second only to 2009. "Devils Lake continues to be a walleye factory," Gangl said. "The high water levels on Devils Lake have improved natural reproduction for most fish species, and there is an abundance of young fish in the system."

A total of 367,000 walleye were stocked in East Bay

and East Devils Lake where natural reproduction tends to be less. However, Gangl said abundant young walleye were seen throughout the lake.

Fall reproduction sampling provides biologists with an index that measures natural reproduction and stocking success. Survey nets are designed for small, young fish which allows biologists to assess reproduction and status of both game and forage fish species. All large and mid-sized reservoirs are sampled every year, and many small lakes are targeted as well.



Miller's Corner
Convenience Store, Deli & Catering

Homemade Soups Daily Specials

It's Here!
24 Hour Pay at the Pump!

Coming Soon Dyed Diesel

Full Cafe Menu 11am-4pm • Mon-Fri

Dine in or Call Ahead for Pickup

406-433-4041
2201 West Holly, Sidney

Save Time & Money with Great Communication!

Mobile Radios

- 25 to 110 watts
- 8 to 128 channels
- small, easy to use

Starting at \$359⁰⁰



Hand Helds

TK-2302
Hand Held
5 Watts w/ Scan



Nice selection of portables!

We can find a place to make it fit!
Call Larry today at....

ADVANCED COMMUNICATIONS

Just North of McDonald's • Sidney, MT
406-433-1659 or Toll Free 1-866-433-1659



McKenzie Building Center, Inc.
Always Your Trusted Partner - Since 1934

FULL TIME OR PART TIME INSIDE SALES



Successful and long established retail/wholesale lumber and home improvement center, needs sales associates to assist customers with placing orders for lumber, building materials and helping to choose cabinets, carpeting and providing excellent customer service.

We are looking for motivated individuals who will have a base salary, depending on experience at a full time base salary of \$30,000-\$50,000 annually, plus commissions and sales incentives, which could bring the total compensation level to \$65,000 or more, and we will also consider applicants for part time work in the morning, afternoons and evenings and/or weekends.

WE OFFER FULL BENEFITS INCLUDING HEALTH INSURANCE, AFTER A TRIAL PERIOD TO APPLICANTS WHO ARE HIRED, ALONG WITH PERIODIC JOB REVIEWS AND INCENTIVE COMPENSATION.

Please fill out the **JOB APPLICATION FORM** which you can print online by going to our website: www.McKenzieBuildingCenter.com and then bring it into the store or send it in the mail to the address below on the website or in this ad in order to be considered for an interview.

\$1000 BONUS IF WE HIRE YOU!

McKenzie Building Center, Inc.
P.O. Box 642
1504 4th Ave NE
Watford City, ND 58854
www.McKenzieBuildingCenter.com
701-444-3665



McKenzie Building Center

Store Hours
Mon - Fri: 7:00 a.m. - 5:30 p.m.
Sat: 8:00 a.m. - 12:00 p.m.
Sunday: Closed

MOG1-54

SBA Helps Veterans Start, Grow and Expand Small Businesses

Submitted by Dennis Byrne

As the nation marks Veterans Day 2012, the U.S. Small Business Administration continues to build on its successful programs for America's military veterans, helping tens of thousands of veterans each year with small business financing, comprehensive business training and counseling and access to federal contracts.

In FY12, ending September 30, 2012, the Montana SBA District Office reported 13 loans to veterans for a total value of \$4,216,000. This compares to FY 11 when SBA serviced 36 loans to veterans valued at \$9,729,000, and 5 loans to disabled veterans valued at \$1,333,100.

The SBA Montana District Office will host a Veteran Business Opportunity Workshop in Helena on November 15th to educate Veterans about opportunities for their small business, for more information on this event visit www.sba.gov/mt.

"Around Veterans Day, our thoughts turn to the men and women who are currently serving in the Armed Forces, as well as to all veterans who have made sacrifices and served our country over the years," said SBA Administrator Karen Mills. "When you consider the leadership and management skills our veterans develop while on active and reserve duty, it's no wonder we see so many of them choose the path of small business ownership."

According to data from the U.S. Census Bureau veterans are successful small business owners. Nearly one in 10 small businesses nationwide are veteran-owned. Collectively, these 2.4 million small businesses employ almost 6 million Americans and generate more than \$1 trillion in receipts. In the private sector workforce, veterans are 45 percent more likely than those with no active-duty military experience to be self-employed.

SBA supports veteran business owners through entrepreneurial training and mentoring, access to capital, and business development opportunities through government contracts.

Entrepreneurial Development

This year SBA partnered with the Department of Veterans Affairs and the Department of Defense to develop a national entrepreneurship training program for transitioning service members as part of the new Transition Assistance Program. Operation Boots to Business: From Service to Startup was piloted with all four branches of the services in

summer and fall 2012. The Boots to Business program will be rolled out during 2013 providing exposure to entrepreneurship training to all 250,000 service members who transition from active duty to civilian life each year.

In a closely related effort, SBA and Syracuse University continue to expand the success of the Entrepreneurship Boot Camp for Veterans with Disabilities program. The growing partnership between SBA and Syracuse University, now in its fourth year, provides training on how disabled vets can start and grow a small business, with programs targeted to service-disabled veterans who served in Iraq and Afghanistan and their family caregivers, women veterans, and National Guard and Reserve members and their families. Since 2009, the first year SBA partnered with Syracuse University, 434 service-disabled veterans have participated in the program.

Participating schools include: Syracuse University, University of Connecticut, UCLA, Florida State University, Texas A&M University, Purdue University, Louisiana State University, and Cornell University.

SBA is also providing \$2.6 million through a cooperative agreement over three years for two programs; Women Veterans Igniting the Spirit of Entrepreneurship (V-WISE), that focuses on training, networking and mentorship for women veterans, and Operation Endure & Grow, targets National Guard and Reserve component members, their families and partners.

Access to Capital

In FY 2012, SBA backed more than 3,200 loans supporting nearly \$2.1 billion in financing to more than 2,800 Veteran-Owned Small Businesses (VOSBs) through its flagship 7(a) and 504 loan programs, including \$118 million through the Patriot Express Loan program. Patriot Express loans offer many advantages to veterans and to SBA's network of participating lenders nationwide. They feature one of SBA's fastest turnaround times for loan approval and an enhanced guaranty and interest rate on loans up to \$500,000 to small businesses owned by veterans, reservists and their spouses. Patriot Express loans can be used for most business purposes, including startup, expansion, equipment purchases, working capital, inventory or business-occupied real-estate purchases.

Government Contracting

The Service-Disabled Veteran-Owned Small Business

Concern Procurement Program allows federal agencies to set acquisitions aside for exclusive competition among service-disabled veteran-owned small business concerns. Federal prime contracting dollars awarded to Service-Disabled Veteran-Owned Small Businesses (SDVOSBs) increased for the fifth consecutive year to \$11.2 billion, or 2.65 percent, in FY2011, up from \$10.793 billion, or 2.50 percent, in FY2010.

Over the last year, SBA has created a series of online contracting courses called Government Contracting (GC) Classroom to help prospective and existing small businesses, including VOSBs and SDVOSBs, understand the basics about contracting with federal agencies. In addition, the Office of Veteran's Business Development provides procurement training to SDVOSBs to help them take advantage of federal contracting opportunities under the Service-Disabled Veteran-Owned Small Business Concern Procurement Program.

SBA reaches out to veterans through its 68 SBA district offices, 15 Veterans Business Outreach Centers nationwide, more than 1,000 Small Business Development Centers, 110 Women's Business Centers and some 12,000 SCORE volunteers, more than 40 percent of whom are veterans. SBA also has numerous programs creating government contracting opportunities for VOSBs. For more information, visit www.sba.gov/vets and www.sba.gov/reservists.

The Montana Chamber is Coming to a City Near You!

The Montana Chamber will be "Giving Thanks", appropriately with the season of Thanksgiving to reflect on the 2012 election results, discuss the Montana Chamber's agenda for the upcoming legislative session and to highlight the many benefits of membership at The Best Western Golden Prairie Inn, at 7:30 a.m., November 21, 2012.

We invite all businesses to attend for business networking, a short program, refreshments, and door prizes.



THE BUSINESS ROUNDUP
GOT A BUSINESS CARD? LET US HAND SOME OUT!
CALL FOR ALL THE DETAILS! 406.433.3306 OR 800.749.3306


GO TO
WWW.ROUNDUPWEB/DIRECTORY
FOR DIRECT LINKS TO
COMPANY WEBSITES
& LOCATIONS

Sax Communications
Communications Contractor & Supplier
Licensed in Montana & North Dakota

1-877-488-8066
Office: 406-488-8066
Fax: 406-488-8067

Jonathan Goetz
Communications Technician

1775 S. Central Ave.
Sidney, MT 59270
www.agriindustries.com

**DOORBUST'N**
Portables & Septic Service, LLC
Blaine Rogers, Owner

PO Box 1003
Sidney, MT 59270

Office: (406) 433-7588
Fax: (406) 433-7588
Service: (406) 488-0815

www.doorbustnportablessepticsservice.com

NICK JONES
REAL ESTATE
REALTOR®

TRUCK ROUTE SOUTH, SIDNEY
OR CONTACT ONE OF OUR AGENTS:

NICHOLAS J. JONES • DENNIS WICK • JUSTIN JONES • JERRIAN FRANKEN • KRISTIN LARSON
BROKER 406-480-1544 406-480-1350 406-480-9525 406-478-3773 406-480-5138
406-480-1544


www.NICKJONESRE.COM

Beagle
PROPERTIES INC.



View all our listings at
www.beagleproperties.com

Alexander RV Resort
Perfect Locations
Between Alexander & Watford City
Hwy 85 • Mile Marker 154
701-484-21RV • 701-484-2178



CUSTOMER SERVICE IS OUR #1 PRIORITY

**BORDER**
STEEL AND RECYCLING, INC.

Farm & Ranch Products & Construction Materials. New Steel, Aluminum & Stainless.

Brady Smelser • Tim Mulholland • Kelly Moody • Bret Smelser • Ernie Gawryluk

Sidney 35002 CR 123 406-433-7737 1-855-810-2995
Glendive 2703 W. Towne St. 1-800-423-5219
Williston 13896 W. Front St. 1-800-820-5493
Plentywood Hwy 16 East 406-765-2624

**McKenzie Building Center**
Always Your Trusted Partner

701-444-3665
888-842-3665
Fax: 701-444-4001
info@McKenzieBuildingCenter.com

PO Box 642
1504 4th Ave NE
Watford City, ND 58054

McKenzieBuildingCenter.com

MD HOSE & FITTING

The Right Connection! Parker

Hours: 7 a.m. - 5 p.m. Mon. - Fri.
205 10th Ave. S. E. Sidney • Sidney Red-E-Mix West Building
P: (406) 433-1590 • After Hours: (406) 478-3116
mdhose@midrivers.com

**SONDA'S solutions**

Specializing in FR Clothing

OFFICE: 406-433-6757 • CELL: 406-697-7153
2221 S. CENTRAL AVENUE • SIDNEY, MT 59270
FAX: 406-433-6755 • WEBSITE:
WWW.SONDASSOLUTIONS.COM

RV Depot

RV Parts & Mobile RV Repair
including in stock

• water heaters • furnaces • air conditioners • special orders available

Mon-Sat: Check for hours.
701-842-2306 • 305 S. Main • Watford City, ND

Roundup
WEB.COM

**S/L SERVICES, INC.**
Oil Field & Industrial Construction

2265 S. Central Ave.
Sidney, MT 59270
Email: sls@slservices.net
Phone: 406-433-6754
Fax: 406-433-6755



www.slserviceinc.com

Famous Dave's BBQ To Open In Williston

Ryan Restaurant Corporation, Braxton Development and Granite Peak Development are proud to announce the signing of a ground lease that will bring the award winning Famous Dave's BBQ restaurant to Williston, ND in the summer of 2013.

This will be the third Famous Dave's in North Dakota (Fargo, Bismarck) but the first in the state for the franchise group Ryan Restaurant Corporation. Owned by brothers Casey & Pat Ryan and based out of Billings, Montana they currently operate seven Famous Dave's Restaurants in Montana, Idaho and South Dakota as well as seven Applebee's Restaurants in Montana.

"Western North Dakota has been a market we've targeted for the last couple years and we're happy to have

finally found a great location," says Casey Ryan. The restaurant will be located in the Dakota Crossing Development at the corner of 14th St. W and US Highway 2 next to the newly completed Hampton Inn & Suites. "We're excited for the opportunities that Williston and the Bakken area offer. Famous Dave's is a natural fit for this region," says Pat Ryan.

Braxton Development is a privately owned and operated real estate development and holding company based in Bozeman, MT specializing in multifamily apartment communities and high quality hotels nationwide.

Granite Peak Development is the largest full service commercial real estate development company in Wyoming. They believe in building lasting relationships.

Recycling Challenge Brings Out Schools' Competitive Spirits

It's time to sign up for the annual School Recycling Challenge between November 15th, 2012 and Earth Day 2013.

Last year Fromberg High recycled more than 52 pounds of aluminum cans per student to win the state challenge and \$1,000 in the statewide contest. The prize money is in addition to the revenue received from recycling the cans. Fromberg reported earning more \$1,000 for the school just from recycling proceeds. Can Fromberg do it again? Will Cascade High School, which won the statewide contest in 2011 - and finished in second place nationally - rise to the challenge and win first place again? Or will your school?

The Montana Department of Environmental Quality (DEQ) is encouraging more schools to become involved in the annual competition. The School Recycling Challenge runs from America Recycles Day, November 15th of each year, to Earth Day, April 22nd of the following year. All schools are eligible to participate and must sign up by the January 16, 2013 deadline at www.cancentral.com/roundup.

The school with the highest per capita recycling rate in each state is awarded a \$1,000 prize. The school with the highest per capita rate nationwide receives a \$5,000 prize. Expedition Academy in Green River, Wyoming has won first place nationally for the past two years.

Last year more than ten Montana schools participated

in the Challenge, with three finishing in the top ten nationally. Fromberg, Cascade and Judith Gap High Schools all participated and came in second place, third place and sixth place, respectively. The nationwide contest is sponsored by the Can Manufacturers Institute.

"Montana students really get into the spirit of recycling and the competition between schools," said Sandra Boggs, Recycling and Market Development Specialist for DEQ. "These accomplishments demonstrate more than the pounds of aluminum cans recycled per student - it demonstrates how communities can step up and stand together in support of a single goal."

The competition seems to work really well for Montana schools, "since we have a low population density but a high number of recyclers," Boggs added. Rural schools have won all three national prizes for the past two years. "It would be great to see a Montana school win first place nationally and beat Wyoming," she said.

In addition to Fromberg High's 52 pounds per student accomplishment last year, Cascade High recycled over 28 pounds per student and Judith Gap did nearly 24 lbs of aluminum cans per student. Expedition Academy in Wyoming recycled more than 70 pounds per student.

Get your school signed up today!



MONTANA
POST FRAME

MOVING POST FRAME FORWARD

Zero-Interest Loans Available



Specializing in custom post frame buildings for residential, agriculture, or commercial applications



Call today for a free quote on your customized building:
Townsend: 406-266-9966 | Sidney: 406-202-3093

B I N G O

Billiards & Darts

203-05 Main Street, Lower Level, Williston
Same Entrance As Veteran's Affairs & J's Fashion Threads
572-6254 or 1-800-732-0962
Open: Tuesday - Saturday 1:30 pm - 5:30 pm
Call for after or before hours appointments

20% off

Bingo Daubers
Pool Cues & Accessories
Dart Sets & Accessories
Games • Playing Cards
Poker Chips

Selling Used:

Pool Tables • Juke Boxes
Dart Boards

Locally Owned & Operated by the Joseph Family



HELP WANTED



McKenzie Building Center, Inc.
Always Your Trusted Partner - Since 1934

**LUMBER YARD
CUSTOMER SERVICE
AND YARD SERVICE**



This position requires ability to lift up to 75 pounds, load and unload trucks, assist customers to accurately fill their orders for lumber and building materials, and work in all weather conditions. A friendly customer service attitude a must!

Previous experience with similar work helpful, but ability to do the work and be able to accurately count materials to replenish stock on hand and verify incoming orders is a must. Forklift experience and certification helpful and preference will be given to experienced fork lift operators. Also desirable is a clean driver history to perform delivery tasks using our company trucks.

Full or part time available \$25-\$50,000 salary depending on experience and work hours.

WE OFFER FULL BENEFITS INCLUDING HEALTH INSURANCE, AFTER A TRIAL PERIOD TO APPLICANTS WHO ARE HIRED, ALONG WITH PERIODIC JOB REVIEWS AND INCENTIVE COMPENSATION.

Please fill out the **JOB APPLICATION FORM** which you can print online by going to our website: www.McKenzieBuildingCenter.com and then bring it into the store or send it in the mail to the address below on the website or in this ad in order to be considered for an interview.

**\$1000 BONUS
IF WE HIRE YOU!**



McKenzie Building Center, Inc.
P.O. Box 642
1504 4th Ave NE
Watford City, ND 58854
www.McKenzieBuildingCenter.com
701-444-3665

Store Hours
Mon - Fri: 7:00 a.m. - 5:30 p.m.
Sat: 8:00 a.m. - 12:00 p.m.
Sunday: Closed

**HURLEY'S
OILFIELD SERVICES**

- Potable Water • Sewer System
- Loaders • Communications
- Backhoe • Trucking
- Skid Houses • Porta Potties

406-742-5312
Fairview, MT

**NEU
CONSTRUCTION, INC.**

Oil Field Roads & Locations
• Reclaim Work
• Gravel & Scoria Hauling

Fairview, MT
406-742-5549

**LONG X BOTTLE
SHOP**

In-store specials every week

8 a.m.-9 p.m.
Mon.-Sat.
1-5 p.m. Sun.
(Located in Long X Visitors Center)

Check out our hard ice cream!

Hwy. 85, Watford City
701-444-3335

Sports Booster

WEEKLY SCHEDULE

Varsity Football

Saturday, Nov. 17
Fairview vs Superior at State in Superior, 1 p.m.

Support Your Favorite Team

Be Sure To Thank The Sports Booster Schedule Sponsors On This Page



Family Dining

Fairview
406-742-5180

Open at 4:30 p.m. Tues.-Fri.
2 p.m. Sat. & Sun.



**FOOD
On The GO**

**Farmers Union
Oil Co.**
101 S Main • Watford City
701-444-3639



Smarter. Better. Faster.

www.RTC.coop
VOICE • DATA • VIDEO

The Roundup Classifieds

Reach Over 21,000 Readers Each Week
In Eastern Montana & Western North Dakota
And Always On The Internet at roundupweb.com
(Paypal required for online purchases)

\$7 up to 30 Words
Classy Deadline: Noon Monday

Add a photo to your classy online!
(Additional Charge)

HELP WANTED

ADMINISTRATIVE ASSISTANT WANTED
The Roundup is looking for a full time Administrative Assistant to work Monday 8-5, Tuesday - Friday 9-5. MUST have computer skills to include: Microsoft Word,

Internet and 10 key skills. Duties include answering phones, perform light cleaning and other duties as assigned. Wage negotiable DOE. Apply at Sidney Job Service.

CARRIERS WANTED
Need extra cash or want to get some exercise? We have

carrier routes available in most parts of Sidney. Call 406-433-3306, or fill out application at The Roundup, 111 W. Main, Sidney.

COOKS, DISHWASHERS & SERVERS
Wage DOE. Apply in person at Cattle-Ac, 119 N. Central Ave., Sidney, MT.

intakes. Must be able to work as needed, follow standard procedures, instructions and have excellent hygiene. CNA: Full-time or part-time, days or nights. Starting wage at \$10.30. Sign-on bonus of \$2,500 for FT and \$1,500 for PT paid over 10 quarters. Benefits include health insurance, life insurance, extended illness bank, 401K and paid vacation. RMC is an

equal opportunity employer. Please contact Shawna Durocher at 406-787-6401. Environmental Services. RMC is in need of a full-time Environmental Services employee. Flexible schedule. Duties include: maintaining cleanliness of the facility and grounds, laundry and house-keeping. RMC offers health insurance, life insurance, extended illness bank, 401K,

and paid vacation. Please contact Ken Forbregd at 406-787-6401.

LIBRARY DIRECTOR
Due to the upcoming retirement of our current director, the Sidney-Richland County Public Library Board of Trustees is accepting applications for the position of Library Director. The trustees seek a dynamic, visionary, innovative and experienced leader who will continue to develop and strengthen public library services in our community for our 21st Century patrons. For a more complete job description, qualifications and how to apply, go to: www.richland.org/spl or the Sidney Job Service.

Driver Wanted

Delivery driver for The Roundup. Must have valid driver's license, be able to lift at least 80 lbs. One day/week. Pick up application at 111 W. Main, Sidney, MT, or at the Sidney Job Service.



Are you an exceptional individual who is ready for success and the opportunity to grow your career in hospitality? Then we want to get to know you!

The ALL NEW Microtel Inn & Suites is in search of new and future hospitality professionals who are prepared to provide industry-leading levels of customer service and award-winning overall guest experiences.

No experience? NO PROBLEM! We will train and equip you with the skills and tools you need to succeed.

- Access to top-tier operational support
- Exciting career advancement opportunities
- Competitive wages and benefits.

You can check out our other hotels at www.microtel.com and www.oasismgmt.com, and also email info@microtelsidney.com to submit your resume or request an application. Resumes and applications can also be faxed to 303.325.1010.

Full & Part-Time positions available...

...Full & Part Time Breakfast Attendants
...Housekeeping





AGRI INDUSTRIES

Agri Industries Inc., a 30 year old company is looking for a top quality Telecommunications Technician and a Journeyman Electrician for our Sidney, Montana office. The Journeyman Electrician will require a valid Electrician's license in Montana and North Dakota. The ideal candidate shall have a proven track record of strong communication skills, quality workmanship, outstanding customer service, high ethical standards and a very positive attitude.

Some telecommunications experience preferred. A valid driver's license is required, and we are a drug free work place. We provide use of our service vehicles, and also offer a complete benefit package including: paid time off, medical and a 401(K). To apply - Call 406-488-8066 or fax resume to 406-488-8067.

Administrative Assistant Position Open

The Roundup is looking for a full time Administrative Assistant to work Monday 8-5, Tuesday - Friday 9-5. MUST have computer skills to include: Microsoft Word, Internet and 10 key skills. Duties include answering phones, perform light cleaning and other duties as assigned. Wage negotiable DOE. Apply at Sidney Job Service



Cooks Needed!

We need full & part-time cooks!

Barmaid Positions Available As Well

Competitive Wages!

Hi-Way Lounge
Alexander, ND • 701-828-3100

HELP WANTED
Panini's Pizzeria is now hiring cooks and waitresses for their new restaurant in Yellowstone Marketplace. Contact 541-510-5348 or stop by and pick up an application.

DRIVER WANTED
Delivery driver for The Roundup. Must have valid



Stockman Bank

Montana Banking.
Pure & Simple.

We are a Montana-born company, built on Western values, focused on creating long-standing relationships through integrity, expertise and results.

Join us in our Sidney office as a:

Real Estate Assistant

To view job opportunities, visit us and apply on-line at www.stockmanbank.com

EOE

The Roundup

Reaching over 8,400 Households in Western North Dakota and Eastern Montana Every Week

Classified Ad Order Form (Please Print)

1	2	3	4	5
6	7	8	9	10
11	12	13	14	15
16	17	18	19	20
21	22	23	24	25
26	27	28	29	30 \$7.00
31 \$7.10	32 \$7.20	33 \$7.30	34 \$7.40	35 \$7.50 (etc.)

\$7.00 for 30 words or less; additional words
10¢ each

Number of words _____ x Number of Times _____ = Cost \$ _____

Name _____

Payment Must Accompany Ad

Mail To:
The Roundup
P.O. Box 1207, Sidney, MT 59270

Help Wanted

 **\$14.80/hour**  **Wage Increase!!**

 **Bid jobs up to \$16.22/hour**  **Wage Increase!!**

 **Opportunity for advancement to full time positions**

 **On the job training**

 **Overtime may be available**

 **Employee Referral Program**

Apply in person or request an application from:
Sidney Sugars Incorporated
35140 County Road 125 - Sidney, MT - 406-433-9320
Apply at Job Service Work Force Center
211 N Central Ave – Sidney, MT
www.sidneysugars.com



Sidney Sugars

INCORPORATED

Walk-ins are welcome!

Equal Opportunity Employer • Drug Free Workplace

driver's license, be able to lift at least 80 lbs. One day/week. Pick up application at 111 West Main, Sidney, MT, or at the Sidney Job Service.

CLASS A DRIVERS

Now hiring class A drivers, housing available. Sidney, MT. New Equipment, safe, professional. Great management. 406-433-5522 or apply online at transystemsllc.com.

DENTAL HYGENIST

Looking for a motivated hygenist to join our team. State of the art, comprehensive, general, and cosmetic practice. Call 406-433-7645.

MUSEUM EDUCATION & DEVELOPMENT COORDINATOR

Seeking energetic professional for Museum Education and Development Coordinator for the MonDak Heritage Center in Sidney, MT; part-time with semi-flexible schedule, including occasional evenings and weekends. Main responsibilities will be developing and providing educational opportunities in the arts and history, and supervising and coordinating special events. Must have: strong customer service abilities, experience working with diverse age groups, particularly children and seniors, experience recruiting and supervising volunteers, excellent communication skills, both oral and written; Strong computer skills, experience with office equipment and knowledge of software such as Microsoft Office and Publisher, and social networking. Ability to multitask, organize and direct programs and activities. Museum, Art, or History backgrounds strongly preferred, but carefully considering all education and experience. Email bclark@richland.org for full description or to submit cover letter and resume. Open until filled.

HELPWANTED

Good, honest, reliable, self-motivated individual for office help. Hours are flexible. Part time is an option. Attn: Vern or William e-mail resume,bighornholding@yahoo.com

REAL ESTATE 77 ACRE RANCH FOR SALE

40 miles from I-90, borders state land, heavily wooded and rolling hills. West of Stillwater River 500 feet into State Land. Two small log cabins, log barn. \$595,000 COLBERT Real Estate. 406-328-4000.

LAND FOR SALE

Commercial and residential land available, two miles north of Arnegard, ND. Excellent location for travel to Watford City and Williston. 701-842-2168 or 701-570-8108.

FOR SALE

Newer 3 bdrm, 2 bath, 1,590 sq ft house on 23 acres N. of Sidney. Lg shelter belt, under ground sprinklers, 3 water wells. Includes 2 40x65 buildings, 28x60 shop/ 3 stall garage, small barn & grain bins, 36 adjoining acres also available. Owner financing avail. 406-482-8057.

FOR SALE

For sale, 3 bedroom, 2 bath home in Watford City. Asking \$160,000. Call 406-781-7734.

FOR SALE

2007 12x44 trailer house in Watford, excellent condition. Paid \$14,000 asking \$10,000. Can be seen at Roughrider Truck Stop south on highway 85 across from Eagles Bar. Gas heat, all appliances, 2 bedroom. Wheels & axles on ready to go. 406-489-1334 or 406-489-2788.

FOR SALE

Previous car wash on west end of Watford City in city limits, commercial zoned, floor heat works good, needs a little updating, excellent location. Asking \$350,000. 406-489-1334 or 406-489-2788, leave message if no answer.

FOR SALE IN WATFORD CITY

Aprox. 1.4 acres commercial zoned, 6 foot security security fence around the property, across from museum to the west. Asking \$250,000, excellent building location. 406-489-2788 or 406-489-1337.

FOR RENT

FURNISHED RENTALS Glendive. Nightly or weekly,Cable TV, WiFi, weekly cleaning. RV spaces/

full hookups. Riverview & Whispering Trees Suites & RV. glendivemotelrental.com. 406-253-0451 or 406-939-1720.

HANGER SPACE FOR RENT

Winter storage space in my hanger for your airplane, boat, etc. 406-482-8057.

WORKCREW HOUSING RENTAL

Housing rentals for workcrews in Williston, Sidney, Plentywood areas. Ready to move in immediately. Fully furnished, clean & spacious. Serious inquiries ONLY. 406-253-7922.

2 LOTS FOR RENT

2 lots available for rent in Sidney with purchase of manufactured home from Schmart Solutions. Home Financing available. 406-488-6183 or schmartsolutions@gmail.com.

FOR RENT

3 bedroom, 2 bath. Be ready December 1st. Serious inquiries only. No pets. 406-488-6183.

Sidney Montana

B & S

Mini Storage, R.V. & Trailers

406-433-2626

New Storage Facility

3 mi. N. of Sidney

Indoor Units
Security Fencing
Keypad Gate
Rent 6mo. get 7th mo. FREE

Parking Spots for RVs, Trailers, Boats, Etc.

406-433-2626

Truck and Trailer Auction

Mon., Nov. 19, 2012

1 p.m.

Sale Location: Crosby, ND

New Century Ag Truck Stop, south edge of Crosby on Highway 5.

Trucks

2007 Peterbilt 329, 13 speed, 624,794 miles

2006 Freightliner FL21 132 XL, 9 speed, 711,688 miles

2000 Kenworth W900, 13 speed, 526,414 miles

2005 Kenworth W900, 13 speed, 538,068

2004 Mack CH600

Trailers

2010 Egonex 130 BBL Tanker Trailer

2010 Egonex 130 BBL Tanker Trailer

2007 Egonex 130 BBL Tanker Trailer

1991 Trailmaster 110 BBL Tanker Trailer

1982 Trailmaster 110 BBL Tanker Trailer

Auction Items property of

1st National Bank

As is/Where is - No guarantees

HAUGLAND'S ACTION AUCTION

12505 124th St. NW - Ardmore, ND 58802

Phone 701-848-6234 - FAX: 701-848-6234

Not responsible for accidents. Those attending sale do so at their own risk.

www.hauglandauctions.com

•Cash Payments: 40% Discount

•Cash Payments: 40% Discount

•Cash Payments: 40% Discount

•Cash Payments: 40% Discount

•Cash Payments: 40% Discount

Help Wanted

Sidney Sugars Incorporated has the following positions open:

- Maintenance Electrician: \$22.21 hour starting; \$26.18 and full time with proven competence. Requires successful completion of employer administered written test.
- Boiler Operator: Class 1 or 2 license \$26.18. Class 3 \$21.95 hr with willingness to learn.Requires Montana or transferable Boiler Operator license.

Full time benefits are:

- Holiday, Vacation and sick pay
- Insurance for medical, dental and life
- Pension and 401 (k)

Apply in person or request an application from:
Sidney Sugars Incorporated,
35140 County Road 125, Sidney MT 59270
Email: ttaynor@crystalsugar.com
Phone: 406-433-9320 Fax: 406-433-9317

Sidney Sugars INCORPORATED

Walk-ins are welcome!

Equal Opportunity Employer • Drug Free Workplace

HELP WANTED

Watford City Homes, Inc.

FULL TIME OR PART TIME INSIDE SALES NEW HOMES

New manufactured home sales center needs experienced sales persons to show models, show designs and plan a home purchase for clients looking to buy a new manufactured or modular home.

We have a great program for financing the homes, hundreds of home plans and custom designs too.

Top consideration will be given to experienced homes sales people, and those with similar sales experience, but will consider highly motivated and personable person willing to work a flexible schedule with a base compensation and commission schedule that could allow earnings of \$45,000 to \$100,000 annually including commissions.

WE OFFER FULL BENEFITS INCLUDING HEALTH INSURANCE, AFTER A TRIAL PERIOD TO APPLICANTS WHO ARE HIRED, ALONG WITH PERIODIC JOB REVIEWS AND INCENTIVE COMPENSATION.

Please complete the application available on our website, and bring it in or mail it in order to be considered for an interview.

\$1000 BONUS

IF WE HIRE YOU!

Watford City Homes, Inc.

P.O. Box 642

1504 4th Ave NE

Watford City, ND 58854

www.WatfordCityHomes.info

701-609-7826

Anytime by Appointment

Mon - Fri: 7:00 a.m. - 5:30 p.m.

Sat: 8:00 a.m. - 12:00 p.m.

Sunday: Closed

WCHI-10

FOR RENT
RV spots in Sidney, have electric and water. 3 miles north and 2 miles east on Richland Park road at the end of the pavement next to the state park and river access a few blocks away. Quiet and private. Sewer will be installed soon. \$750/month, 406-489-1334, ask for Diane.

SERVICES
HOT SHOTTRUCKING
Haul Lass, LLC is now servicing the area. Delivering anywhere,

S&S Motors

See the CLEARANCE tag specials!

2009 GMC Yukon XL Denali, red, 31k mi.	\$44,995
2012 Chevy Suburban, mocha steel, DVD, Sunroof, 23k mi.	\$42,995
2009 GMC Yukon XL Denali, tan, DVD, 49k mi.	\$41,995*
2012 GMC Yukon SLT, silver, DVD, 25k mi.	\$39,995
2012 Ford Explorer Limited, brown, 14k mi.	\$39,995
2011 Ford F250 Lariat, brown, 19k mi.	\$39,995
2009 Chevy Tahoe LTZ, gray, 45k mi.	\$36,995
2012 GMC Acadia SLT, white, 27k mi.	\$34,995
2013 Ford Edge Limited, red, 22k mi.	\$34,995
2011 Ford F150 XLT, white, 29k mi.	\$31,995
2011 Ford F350 XL, white, 60k mi.	\$29,995
2009 Chevy Silverado LTZ, silver, 52k mi.	\$29,995*
2011 Jeep Grand Cherokee Laredo, black, 46 mi.	\$34,995
2012 Ford Escape Limited, white, 31k mi.	\$24,995
2007 GMC Yukon SLT, black, DVD, sunroof, 86k mi.	\$24,995
2007 Chevy Silverado 1500 Z71, gray, 61k mi.	\$24,995*
2009 Ford F250 Lariat, blue, 108k mi.	\$23,995
2007 Chevy Tahoe LT, blue, DVD, Nav 98k mi.	\$23,995
2008 Ford F150 XL, white, Ext. Cab, 34k mi.	\$21,995
2011 Ford Escape, gold, 33k mi.	\$21,995
2008 Taurus X Limited light blue, 48k mi.	\$19,995
2008 Ford Edge SEL, light blue, 74k mi.	\$17,995
2008 Honda Odyssey, white, 49k mi.	\$15,995
2006 Ford F350 XLT, white, Ext. cab, 103k mi.	\$15,995
2006 Chevy Tahoe LT, maroon, htd. leather, 106k mi.	\$14,995
2007 Buick Lucerne CXL, silver, 45k mi.	\$14,995
2005 Jeep Grand Cherokee Limited, gray,hemi, DVD, 103k mi.	\$13,995
2003 Ford F250 XLT, white, utility bed, 135k mi.	\$11,995
2008 Ford Edge SE, gray, 149k mi.	\$11,995
2008 Chevy Uplander LT, maroon, 94k mi.	\$9,995
2006 Chevy Malibu Maxx, tan, 70k mi.	\$8,995
2003 GMC Envoy, brown, 84k mi.	\$8,995
2000 Honda CRV, silver, 156k mi.	\$5,995
2006 Pontiac G6, grey, 166k mi.	\$5,995

www.sandsmotorsinc.com

444-2341 or Toll Free - 800-584-9205 • Watford City, ND

The Roundup

and

AG

ROUNDUP

are available in Williston at

- 3 Amigo's
- Albertson's
- Economart
- Gramma Sharon's
- Hedderich's
- Herman Oil Convenience Store
- M & H Convenience Store
- Scenic Sports & Liquor
- Simonson's
- Williston Airport

And in Trenton at

- Talon Smoke Shop
- Trenton Store

Pick up your FREE copy today!

anytime! Reliable, responsible & local! Give me a call at 406-480-0126 or 406-488-6613, email hoffhd@hotmail.com or fax 406-488-6107. Dianna Hoff, Hauler.

WELDING
Welding & repair work. No job is too small. Portable welder, reasonable rates. 701-444-2936.

COMPLETE SERVICE CENTER
The Roundup provides free Fax service at Meuchel Computer Services, Watford City, ND, for all news, photos & advertising copy. You may drop your Roundup payments at Meuchels.

WINDSHIELD REPLACEMENTS
Lowest price around. Quick service. Over 300 windshields in stock for cars, pickups & semis. Magrum Motors, 1820 2nd St. W., Williston. 701-572-0114.

Mini-Storage

STORAGE UNITS AVAILABLE

20X20 • 10X20
10X16 • 8X9

Sidney, MT
482-3799 or 482-2666

HEADQUARTERS FOR STOCKMEN

Williston Saddlery

14095 West Front Street - Williston, ND 58801
4 1/2 Miles West on Hwy. 2

• Trailers

• Saddles & Tack

• Complete Feed Line

• Livestock Equipment

• Animal Health Products

We are like a good Horse - We aim to please

TELEPHONE (701) 572-2267

Don't waste your recruitment \$\$\$

Reach 22,000 Readers In the MonDak Region Every Week

The Roundup

111 West Main • Sidney, MT
406-433-3306
www.roundupweb.com

VERMEER HAYING EQUIPMENT
See us today for all your haying & feeding equipment, sweeps & farm oil. Anderson Vermeer Sales & Service. Open Mon.-Fri., 8 a.m.-5:30 p.m. 701-828-3358 or 701-828-3482 (after hrs.). Alexander, ND.

HESSTON 1014
Hesston 1014 hydro swing hay conditioner. Williston, 701-875-4278, \$4000. O.B.O.

FOR SALE
Tired of wasting hay? Try the new Bextra Round Bale feeder or the new Common Sense double bale feeder. Also 24ft sections of steel windbreak. Call Kueffler Ranch Supply, 701-694-3620.

FOR SALE
20 Black Angus bred hfrs, and 20 F1 Bwf bred hfrs. Bred to calve April 1 with 45 days calving interval. Bred to calving ease Black Angus bulls. Madison Herefords 701-828-3507 or Feiring's Cattle Co. at 701-872-5888.

FOR SALE
Approximately 500 carryover mixed alfalfa/grass hay bales. Wt. 1100-1200 lbs. with plastic twine. 701-770-1622 (c) or 701-842-4107 (h), leave message.

RECREATIONAL VEHICLES
FOR SALE
2003, 28ft Forest River 5th wheel. 1 slide out, very good shape, brand new tires, oak furniture, couch long enough for adult. Pro-series slider used 1 time. Hook up in pickup for camper hookup, safest one you can purchase. Will do package deal w/ 95 Ford pickup. 406-979-5888.

FOR SALE
2003 Montana 36' 5th wheel Arctic package, 3 pop outs, great shape, \$25,000, O.B.O. 1993 Layton 26' bumper pull, sleeps 3, new tires, \$3,000. 406-480-1286, will deliver if it's within 50 miles.

FOR SALE
1981- 26' RV gooseneck camper Mayflower model. At Roughrider Truck Stop, 1 mile south in Watford. First \$1,500 takes it. Needs hot water heater, everything else is in good shape. Best deal in the whole area. 406-489-1334 or 406-489-2788.

TOP LINE ENGINEERING

CIVIL ENGINEERING
LAND SURVEYING
LAND PLANNING
SITE DEVELOPMENT
& ENTITLEMENTS

Arizona Office
4711 East Falcon Drive, Suite 334
Mesa, Arizona 85215
Phone: 480.969.5822

Montana & North Dakota Office
12635 Highway 200N
Sidney, Montana 59270
Phone: 701.570.2844

Contact: info@toplineengineering.com | Web: www.tlengr.com

VEHICLES
FOR SALE
2005 Pontiac Montana mini-van. Runs great, clean, good mileage. 91,000 miles, \$6,500. 406-798-3624.

FOR SALE
2004 Chevrolet Silverado 1500, Z71, 5.3 V8, 6 1/2 foot box, 75,000 miles, maroon color, tow package, excellent condition. 701-842-3052 (h), 701-641-3302 (c).

FOR SALE
1989 Chevy pickup. Has propane system. Doesn't run, but has motor available for \$600. 406-488-6183.

MISCELLANEOUS
FOR SALE
FIRE RESISTANT
Fire resistant clothing available at The Other Place, Culbertson, MT. 406-787-5211.

FOR SALE
25' tall Windmill for decorative purposes, \$1000 OBO. 406-798-3314.

FURNITURE & DISHES
FOR SALE
Corelle dishware, folding table & 4 chairs, brand new, \$50. Doll house, folding cot, Little Tikes blue & white toy box, \$75. Glider rocker & foot rest, \$150; La-Z-Boy recliner, \$100; coffee table, \$100, 1 end table, \$50. All in good condition. 406-480-2288.

FOR SALE
2012 Haro bike, 2 power bass 10" subs with sealed box and 600 watt amp, SDG 107 pitbike, entertainment stand, 2 Crossfire BMF 10" subs with ported box. 406-480-1499.

GUN SHOW
Minot State Fair Center. Nov. 24 & 25. This is a big show! Sat. 9a.m.-6p.m. Sun. 9a.m.-4p.m. 701-839-4679.

WANTED
SIDNEY COMBAT CLUB
We train men & women for mixed martial arts competitions, self-defense and conditioning. Now meeting at Sidney Healthworks; Tues. 6:30- 8:30 p.m., Wed. 7:30- 8:30 p.m., Thurs. 6:15- 7:15 p.m., Fri. 5:30- 7:30 p.m. \$35/month. For more information, call Barry, 406-480-2024.

Lunch Menus

Sidney Schools
Thurs., Nov. 15: Turkey gravy over biscuits, green beans, mandarin oranges.
Fri., Nov. 16: Chicken strips, potatoes & gravy, diced carrots, pineapple tidbits.
Mon., Nov. 19: Chicken drummies, savory rice, mandarin oranges, corn.
Tues., Nov. 20: Pancakes, sausage links, hash brown, applesauce, juice cup.
Wed., Nov. 21: School dismissed at noon.

Richey Schools
Thurs., Nov. 15: Drummies, mashed potatoes, mixed veggies, fruit.
Fri., Nov. 16: Slushburgers & salad bar.
Mon., Nov. 19: Chicken nuggets, gems, oranges.
Tues., Nov. 20: Chicken burgers, french fries, peaches.
Wed. Nov. 21: No School.

E. Fairview School
Thurs., Nov. 15: BBQ pork on bun, smiles, pears, mixed veggies.
Fri., Nov. 16: Thanksgiving Dinner.
Mon., Nov. 19: Chicken nuggets, mac & cheese, apples.
Tues., Nov. 20: PBJ, chicken noodle soup, peaches.
Thurs., Nov. 21: French bread pizza, garden rice, pineapple, bananas.

Fairview School
Thurs., Nov. 15: Turkey dinner and all the trimmings.
Fri., Nov. 16: Chef salad, peas, apple and orange slices, garlic toast.
Mon., Nov. 19: Biscuits and gravy, hashbrowns, eggs, fruit and juice.
Tues., Nov. 20: Macaroni cheese hamburger hotdish, corn, applesauce and bun.
Wed. Nov. 21: Hot dogs, chips, raw vegetables, mixed fruit.

Culbertson School
Thurs., Nov. 15: Sliced ham, green beans, pineapple, tidbits.
Fri., Nov. 16: Sub sandwiches, chips, apple slices.
Mon., Nov. 19: Beef and cheese burritos, rice & beans, fruit cocktail.
Tues., Nov. 20: Hot dogs, corn, applesauce.
Wed. Nov. 21: Chicken tenders, potato wedges, pears.

Bainville School
Thurs., Nov. 15: Taco soup, bread stick, fruit cocktail.
Fri., Nov. 16: Thanksgiving dinner, no salad bar.
Mon., Nov. 19: Popcorn shrimp, gems, mixed veggies, strawberries.
Tues., Nov. 20: Pizza, cheesecake.
Wed. Nov. 21: Hot roast beef sandwich, corn, mandarin orange cup.

Lambert School
Thurs., Nov. 15: Chalupa, fresh veggies, apples.
Fri., Nov. 16: Corn dogs, gems, jell-o.
Mon., Nov. 19: Pizza, chips, carrots, celery, graham crackers.
Tues., Nov. 20: Polish sausage, au-gratin potatoes, oranges.
Wed., Nov. 21: No school.

Froid School
Thurs., Nov. 15: Tomato soup, grilled cheese sandwiches, relishes, fruit.
Fri., Nov. 16: Baked cod, baked potatoes, veggies, relishes, fruit, buns.
Mon., Nov. 19: Taco chalupas, lettuce salad, fruit.
Tues., Nov. 20: Italian dunkers, lettuce salad, fruit.
Wed., Nov. 21: Hamburger stroganoff over noodles, veggies, fruit, buns.

Savage School
Thurs., Nov. 15: Tostitos/ chips, lettuce and cheese, green beans, pears.
Fri., Nov. 16: Chicken patty, fresh veggies, calico fries, pineapple.
Mon., Nov. 19: Spaghetti weiner casserole, peas, whole wheat bread, tropical fruit.
Tues., Nov. 20: Chicken ala king, biscuits, mixed veggies, applesauce.
Wed., Nov. 21: No school.

Rau School
Thurs., Nov. 15: Turkey potato/ gravy, green beans, bun, pumpkin bars.
Fri., Nov. 16: Soup day.
Mon., Nov. 19: Tater tot- hotdish, corn, peaches.
Tues., Nov. 20: Winner's choice.
Wed., Nov. 21 : No lunch, early out.

It May Feel Like Fall But Winter Is On Its Way

GET YOUR 4X4'S TODAY

Before The Snow Arrives!

**2002 HONDA ACCORD
EX SEDONA 4X4**
TAN/TAN CLOTH. ONLY 73,087 MILES, 4 CYL.
AT, A/C, TILT, SC, POWER SUNROOF,
STK #G4S25B



\$8,995

**2008 JEEP
COMMANDER 4X4 V6**
AT, A/C, TILT, SC, AM/FM/CD, WHITE/EBONY
CLOTH, 104,974 MILES, STK #G4S04B



\$12,995

**2008 TOYOTA SIENNA
XLE MINIVAN**
PW, PL, TILT, SC, POWER SEATS, EBONY,
38,742 MILES, STK #G4483A



\$22,995

**2010 BUICK ENCLAVE
CXL AWD**
PW, PL, TILT, SC, POWER SEATS, ALW,
35,500 MILES, STK #G3B39A



\$29,995

**2002 CHEVY
TAHOE LT 4X4**
PW, PL, TILT, SC, POWER SEATS,
WHITE/GREY LEATHER, STK #U4823B



\$7,995

**2007 CHEVY
SUBURBAN LTZ**
PW, PL, TILT, SC, POWER SEATS, CAPTURES
20" WHEELS, AM/FM/XM/CD, NAV, DVD,
SUNROOF, 83,040 MILES, STK #G4B38B



\$28,995

**2011 CHEVY
1500 CREW LTZ**
PW, PL, POWER SEATS, HTD SEAT, 7 LT, SC,
AM/FM/XM/CD, 8" ASSIST STEPS, 20"
WHEELS, ACCESS COVER, BOX RAILS,
SILVER/TITANIUM LEATHER,
36,669 MILES, STK #C4923A



\$34,995

**2006 FORD
TAURUS FWD V6**
PW, PL, TILT, SC, TAN/TAN CLOTH, 53,018
MILES, STK #U4006B



\$7,995

**2011 GMC YUKON XL
DENALI AWD V8**
6.2 L, AT, A/C, AUTO RIDE, 20" CHROME
WHEELS, PW, PL, TILT, SC, AM/FM/XM/CD,
NAV, DVD, SUNROOF, MOCHA STEEL, EBONY
LEATHER, 45,494 MILES, STK #K4975A



\$45,995

**2008 CHEVY 1500
CREW 4X4 LTZ**
PWS, PL, TILT, SC, POWER SEATS, MTD SEATS,
271, WHITE/EBONY, 146,490 MILES,
STK #G4351B



\$17,995

**2010 FORD F150
PLATINUM EDITION**
4X4, PW, PL, TILT, SC, AM/FM/CD, P SEATS,
RWD SLIDER, T COVER, P RUN BRDS, WHITE/
GRAY LTHR, 53,481 MILES STK #G4930A



\$33,995

Come see our sales consultants today!



PAT MURPHY
DEALER



RICK MOE
SALES
MANAGER



TARA PRATT
SALES



JOSH CLAP
SALES
MANAGER



TERRY LOUGH
SALES



LORNE RAY
FLEET
MANAGER



CHRIS
JACKSON
SALES



PATTY AMP
SALES



LARRY
STEWART
SALES



GALE DALBEY
BUSINESS
MANAGER



1801 2nd Ave W • Williston, ND
Call 1-800-888-2927 or 701-577-2927
HOURS: Monday 8am-8pm • Tuesday-Friday 8am-6pm • Saturday 9am-5pm
*In lieu of rebates, must finance through Ally. *Trade must be 1999 or newer

www.murphymotors.com



PICTURE YOURSELF IN THESE HOMES
WE HAVE A HOME FOR EVERY BUDGET
www.watfordcityhomes.info



FROM \$59,995
\$502 MONTH*



FROM \$69,995
\$586 MONTH*



FROM \$79,995
\$670 MONTH*



FROM \$89,995
\$753 MONTH*



FROM \$99,995
\$837 MONTH*



FROM \$129,995
\$1,085 MONTH*

New models arriving weekly or select your custom home.

- Free Appliances
- Free Carpeting
- Free 50 Gal Water Heater
- Free Delivery
- Free Central Heat
- Furniture Available



ORDER YOUR CUSTOM
CABIN TODAY FROM
\$29,995

Additions

- Add a Garage from \$4,995
- Add a Deck from \$1,995
- Add a Shed from \$1,995



USE THIS COUPON!
towards your home purchase

PAY TO THE ORDER OF *Home Buyer* \$ **\$5,000**
Five Thousand Dollars DOLLARS

Dream Home Watford City Homes, Inc.

www.WatfordCityHomes.info • (877)-839-3949 • Highway 23 East, Watford City, ND 58854

Phone: (701)-609-7826
Toll Free: (877)-839-3949
Hours:
Mon, Tues, Wed, Fri:
10 A.M. - 6 P.M.
Thurs: 10 A.M. - 8 P.M.
Anytime by appointment.



*FOR ILLUSTRATION PURPOSES ONLY. BASED ON GOOD CREDIT, 8% INTEREST 20 YEAR FINANCING. YOUR INTEREST RATE MAY VARY BASED UPON YOUR CREDIT AND AMOUNT FINANCED. WCH-01