

# The Roundup

PRSRT STD  
U.S.  
POSTAGE  
PAID  
The Roundup

(406) 433-3306  
Fax (406) 433-4114  
e-mail address:  
info@roundupweb.com  
www.roundupweb.com

Business Office:  
Located at 111 West Main  
Sidney, MT

Mailing Address:  
P.O. Box 1207  
Sidney, MT 59270

PRSRT STD  
ECRWSS  
U.S. POSTAGE  
PAID  
EDDM RETAIL

Local  
Postal Customer

Wednesday, May 11, 2016

Volume 42 • Number 13

## Cornerstone Bank Breaks Ground On New Location In Watford City

Submitted by Kristen Jaeger

A ground-breaking ceremony was held on Tuesday, May 3 for the new Cornerstone Bank in Watford City. The new bank is scheduled to open to customers in the summer of 2017. Watford City Market President Dale Patten says the move is necessary because of the bank's growth. Patten adds, "We have enjoyed participating in McKenzie County and Watford City's tremendous growth. We are very excited to bring new banking facilities to town that will allow us to not only continue serving customers and meeting the needs of the community, but also to continue to be a part of the area's growth."

The new location will be on Hwy 85 to the east across from Heggen Equipment. Conveniences like a drive up ATM and better parking will be in addition to the same great services offered at the current location. Cornerstone is working on this project with the Architecture Firm Wild CRG.

Cornerstone Bank is currently located at 500 2<sup>nd</sup> Ave SW in Watford City. The banks' name was changed from McKenzie County Bank to Cornerstone Bank in March 2015 through a merger between Lakeside Bank Holding Company and Cornerstone Bank Holding Company. McKenzie County Bank was started in 1982 and their rich history of community banking and

community commitment continues through Cornerstone Bank. With bank locations in Bismarck, Dickinson, Fargo, Makoti, New Town, Parshall, Plaza, and Watford City and additional mortgage offices in Grand Forks and Minot, Cornerstone Bank is a community bank that has been growing since 1952. Now one of North Dakota's ten largest financial institutions, Cornerstone Bank Holding Company is currently an \$800 million financial institution. Cornerstone Bank provides an expansive product offering while staying true to their mission of providing access to financial experts who give straight answers and the best possible financial options. Cornerstone's offerings include business and consumer loans, deposits and cash management services, online and mobile banking along with mortgage and investment services.



(L-R) K.C. Krumwiede (Wild CRG), Derrek Wilson (DW Excavating), Scott & Jane Swenson (Cornerstone Bank Board of Directors), Vicki Monsen and Janel Lee (Cornerstone Bank Team Members), Gene Veeder (McKenzie County Economic Development), Dale Patten (Cornerstone Bank Watford City Market President), Brent Sanford (Watford City Mayor). Photo by Kathy Taylor

## The Josh King Memorial Scavenger Hunt is Sure to Put 'Fun' in Fundraising, May 20

By Meagan Dotson

The Josh King Memorial Scavenger Hunt is happening Friday, May 20 with registration open at 5:30 p.m. and games beginning at 6 p.m. The event will be held in honor of the late Josh King, who served as a paramedic and Director of Ambulance. Anyone who knew King knew that he was incredibly devoted to his calling and to his community and many of the current Richland County EMTs were trained by or worked with him. After he passed away in 2013, family and friends set up the Ambulance Education Fund through the Foundation for Community Care and in 2015 the decision was made by King's family to create a scholarship fund for those looking to pursue advanced paramedic education.

The scavenger hunt will start in the IGA parking lot outside of the Foundation for Community Care, where on-call EMTs will be giving tours of the "King Ambulance"; registration is \$25 per person or \$100 for a team of five. From there, teams will be given the location of their first challenge, including hilarious shenanigan challenges and medic challenges. Some of the medic challenges will include taking vitals, splinting, the KED device, back boarding, CPR, administering the Heimlich, a life-sized Operation game, and an introduction to Lucas, which is a machine that administers automated chest compressions. These machines have been received throughout the state and the Richland County EMTs are looking forward to familiarizing the public with them and answering any questions. Prizes will be awarded to the Best Medic-in-Training, whoever gets the best grade from EMTs, Highest Score, which requires teams to take a picture at the end of each challenge and post it, and a prize for the Best Fundraiser. Those who've taken advantage of online registration at <http://tempuri.org/tempuri.html> have already begun fundraising. During the scavenger hunt, teams can raise money by being amateur street performers and earning donations, dressing up in costumes to get onlookers to donate money for a picture with them, finding 'sponsors' to back their crazy challenges, or whatever other legal means of fundraising you can think of. Individuals don't need to be part of a team to participate in the challenges or help with fundraising, however anyone who is going to be accepting donations for the scholarship fund must register and receive a denoted bracelet letting the public know that they are a legitimate part of fundraising events. Those who register will also get a t-shirt commemorating the event.

For those that aren't interested in partaking in the challenges, there is still plenty of fun to be had taking in the hilarious festivities and watching the wacky competition between teams, so come one and come all! The challenges are open to anyone, being most suitable for those ten and older, with at least one

Each registrant will receive this T-shirt; proceeds from the scavenger hunt will go to the Josh King Memorial Scholarship Fund.



adult per team and drivers are recommended for time efficiency.

Donations can be made by texting the word JOSH to 71777; registered teams will be given a unique word (e.g. JOSH32) to track their online donations. Donations can also be made directly at the event, online at <http://tempuri.org/tempuri.html>, or by mailing them to the foundation for Community Care, 221 2nd St NW, Sidney, MT, 59270, with Ambulance Education noted in the memo line.

All medic challenges are being provided by the Richland County Emergency Medical Service and prizes are being provided by the Foundation for Community Care.

There will be after-hours activities following the event. For more information, visit Josh King Scavenging Fundraiser on Facebook or call Alli Nelson at 406-580-6031. For more information about applying for the scholarship, contact the Foundation for Community Care at 406-433-2273.

Josh King was someone devoted to his family, his friends, and his work. He believed in 'providing the highest quality emergency care available to those who need it.' His memory reminds us that we can make a difference in the lives of our friends and neighbors, just as his memory continues to make a difference in the lives of those who knew him well.

## New Blog Website For The MonDak Area



By Sheridan Martin

Brought to the public by the Roundup Newspaper, a free-opinion blog in which citizens can submit anonymous submissions involving the MonDak Area. The website is called The MonDak Yak and can be found at [themondayak.com](http://themondayak.com).

The purpose of this website is to provide the public a source where they can anonymously provide their opinion on any sort of matter; whether it is a good or bad business experience, who they want to vote for this coming election and why, religious beliefs, personal thoughts, and anything that may come to mind where you want the public to see but may not want to share openly with a group of friends.

There are many ways you can submit to The Mondak Yak. There is the contact page found on the website, messaging the Facebook page, or simply emailing [themondayak@gmail.com](mailto:themondayak@gmail.com).

The MonDak Yak does censor all submissions. The website will not accept discriminating, vulgar, inappropriate and bullying posts. All submissions have to be submitted by email or through the contact form before being posted. Posts discriminating against a single person, race, or religious view will not be accepted. If someone submits an article that does fit these guidelines, Admin will send an email explaining why it will not be posted and/or work with you to change the story so it can be posted.

Also, if someone feels like they may not be the best writer, lead Admin of the site will work closely with them and write the story so that they can get their opinion heard.

So far the blog has already received personal opinion submissions on marriage, loud vehicles in the Shopko parking lot, and most recent; a submission on the athletic systems in small towns.

Be sure to check out [themondayak.com](http://themondayak.com), and comment on posts or submit to [themondayak@gmail.com](mailto:themondayak@gmail.com).

## Fairview City Wide Cleanup, Erase Your E-Waste Event This Saturday

Fairview residents are encouraged to help clean up the city this Saturday, May 14. While this past winter was an easy one, litter still accumulates and yard chores still need to be done. Dumpsters will be placed at the fire hall from 8am to noon for those wishing to dispose of unwanted items and trash. A tree chipper will be on site as well. An erase your e-waste event is being held during the same hours.

Anyone needing help with items is encouraged to call City Hall at 406-742-5616 by 5pm Friday, or Ray at 406-489-2624 Saturday morning.

This event is only until noon Saturday. Please do not drop off trash or e-waste after that time.

MNAXLP





Yellowstone Chiropractic Clinic

(406)-433-4757 222 2nd. Ave. SW  
1-866-433-4757 Sidney, MT 59270

**Dr. Ryan Laqua**  
Chiropractic Physician &  
Certified Medical Examiner

• Sports Injuries • DOT Physicals  
• Personal Injuries & Pain Conditions



WWW.COOKSONMAIN.COM

No. 224

Main Street

WILLISTON, ND 58801

PHONE: 701-572-2665

FAX: 701-572-2666

ANGELA DeMARS, proprietor

ANGELA@COOKSONMAIN.COM

We welcome news and sports stories!

Fax to: (406) 433-4114

email to: email@esidney.com

bring stories to 111 W. Main, Sidney

or call us at (406) 433-3306

The Roundup

The Roundup

Do you have news or photos you would like in The Roundup?

Richland ..... Meagan Dotson

County 406-478-0517

Roosevelt... Sheridan Martin

County 406-529-4031

McKenzie ..... Kathy Taylor

County 701-842-6188

AREA RECOVERY GROUPS

MONDAYS:  
12 p.m. — AA Group Trinity Lutheran Church Ed. bldg., 214 S. Lincoln Ave, Sidney.  
1 p.m. - 3 p.m. – Grief Reovery Support group at First Lutheran Church, Watford City.  
6 p.m. – Al-Anon,Trinity Lutheran Church Ed. bldg., 214 S. Lincoln Ave, Sidney.  
7 p.m. – Fairview Alive and Kicking at Faith Alliance Church, 704 S. Western Ave.  
8 p.m.— AA Group, Northern Pump & Compression, Watford City. Call 770-3603 or 770-2675 for directions or ride.

TUESDAYS:  
7 p.m. — AA Group Trinity Lutheran Church Ed. bldg., 214 S. Lincoln Ave, Sidney.

WEDNESDAYS:  
8 p.m.— Al-Anon, Sanford Room, McKenzie Co. Public Library, Watford City.

THURSDAYS:  
7 p.m. — NA meeting, MonDak Trucking office Bldg., 725 W. Holly, Sidney.  
8 p.m.— AA Group, Northern Pump & Compression, Watford City. Call 770-3603 or 770-2675 for directions or ride.

FRIDAYS:  
12 p.m. — AA,Trinity Lutheran Church Ed. bldg., 214 S. Lincoln Ave, Sidney.  
12 p.m. - 1 p.m. - AA meeting, basement of Wilmington Lutheran Church, Arnegard.  
6:30 - 7:30 p.m.- 5 Stones faith based recovery meeting, Sidney Nazarene, 606 9th St. SW, Back door is open.  
7 p.m. — Path to recovery at Faith Alliance Church, 704 S. Western Ave.  
8 p.m. — AA meetings, Trinity Lutheran Church Ed. Bldg, Sidney.

SATURDAYS:  
9 a.m. & 7 p.m. — AA Group Trinity Lutheran Church Education bldg., 214 S. Lincoln Ave, Sidney.  
3 p.m. - NA meeting, Straight The Path Grp, MonDak Office, 725 W. Holly St., Sidney.  
7 p.m. — AA 24 hour group, Northern Pump & Compression, Watford City. Call 770-3603 or 770-2675 for directions or ride.

SUNDAYS:  
3 p.m. - NA meeting, Straight The Path Grp, MonDak Office, 725 W. Holly St., Sidney.  
7 p.m. — AA Group Trinity Lutheran Church Ed. bldg., 214 S. Lincoln Ave, Sidney.

STATISTICS

LAKE WATER LEVEL REPORT

Sakakawea

Current Elevation.....1837.9

Last Week's Elev. ....1837.6

One Year Ago .....1838.4

Release For Day (C.F.S.) .....14,000

SIDNEY WEATHER DATA

Source: MSU Eastern Agricultural Research Center

Date	High	Low	Precip.
May 2.....	76	46	0.06
May 3.....	82	38	0.00
May 4.....	87	44	0.00
May 5.....	91	49	0.00
May 6.....	72	50	0.00
May 7.....	74	36	0.00
May 8.....	78	41	0.00
Total YTD Precipitation.....			4.48

# OBITUARIES

## Gottlieb “GB” Schmierer, 92, Savage, MT

Funeral services for Gottlieb “GB” Schmierer, 92, of Savage, MT, are at 10 a.m. on Thurs., May 12, 2016 at the First Lutheran Church in Savage with Pastor Nell Lindorff officiating. Interment will be in the Riverview Cemetery, under the direction of the Fulkerson-Stevenson Funeral Home. Remembrances, condolences and pictures may be shared with the family at www.fulkersons.com.

Gottlieb died on Saturday evening, May 7, 2016, at Glendive Extended Care Facility.

## Dorothy Barber, 87, Sidney, MT

Memorial services for Dorothy Barber, 87, of Sidney were held at 10 a.m., Thurs., May 5, 2016 at the Fulkerson-Stevenson Memorial Chapel, officiated by Reverend Richard Eggars. Cremation has taken place under the direction of Fulkerson-Stevenson Funeral Home. Her cremains will be interred with her husband in the Columbarium Wall in the Sidney Cemetery.

Remembrances, condolences and pictures may be shared with the family at www.fulkersons.com.

Dorothy died on Monday evening, May 2, 2016 at her home in Sidney.

# Sidney Girls Summer Fast Pitch League

The Sidney Girls Summer Fast Pitch League season game opener will be Tuesday, May 17th. Players consist of girls currently in grades 5-8. Games will be held Tuesday and Thursday nights, starting at 6 p.m. at the South Meadow Softball Complex. The end of the year tournament will be June 29th and 30th. Fundamental nights for players and coaches will be every Monday at 6 p.m. starting Monday, May 16th.

Teams consist of: Nick Jones Realty, coached by Amber Henwood and Melanie Morrill, 8th graders Malia Crosby, Rebekah Goerke, Zoe Morrill, Aidan Wiese; 7th graders Hadley Garsjo, Lexi Metz, Brooke Morrill; 6th graders: Lydia Breuer, Curstine Gaffield, Chloe Schroeder; 5th graders Lily Jones, Shanti Taylor, Aubrie Watson.

Gem City Motors, coached by Jozi Moore and Terri Moore 8th graders Trinity Brown, Hailey Christensen, Maddie Peters; 7th graders Brianna Brost, Serenity Kuntz, Jauslynn Niblock; 6th graders Jade Emly, Trudi Speldrich; 5th graders Tristyn Brost, Emma Cundiff, Allyson Nentwig, Sophie Peters, Lily Wick.

Healthy Smiles Dental Group, coached by Tony and Madison Thiessen 8th graders Jenna Baxter, Cheyenne Christian, Kodi Obergfell, Riley Thiessen; 7th graders Jaylen Baxter, Hannah Uran; 6th graders Tana Kostelecky, Naomi Schrader, Kodi Shulz, Joleah Sverdrup; 5th graders Hattie Brothen, KaiLeigh LaRoche, Kendyl Wacha.

## Girls Scout Troop #2358 Proceeds Benefit Boys & Girls Club

By Michele Seadeek

Girls Scout Troop #2358 led by Jenna Donahue had a bake sale. The scouts came together and decided to take their proceeds and donate it to Boys & Girls Club of Richland County. “Jenna Donahue called me and said that the girls wanted to make this donation to the Club and I thought wow, what a selfless act by these young ladies,” says Michele Seadeek, BGC Development Director. According to the Club, this donation will help provide Back-A-Kid scholarship funds for the summer camps provided by the Club.

Many Boys & Girls Club members are involved in dance, gymnastics, scouts, hockey, and a variety of other activities outside of the Club. “When clubs and organizations work toward a goal like this troop’s bake sale, the youth issues facing Richland County grow smaller day by day,” says Elaine Stedman, CEO of the Club. “The troop’s donation is a great example of the giving that our children are learning. Which is a great benefit to our society.”

To learn more about Boys & Girls Club of Richland County Back – A – Kid Scholarships or the Clubhouse plans go to www.richlandbgc.org or call 406-433-6763.

## Harvest Reporting Now Mandatory For Paddlefish Anglers

Submitted by Montana Fish, Wildlife & Parks

Paddlefish anglers with a yellow harvest tag that are anxious to fish on the Yellowstone River or Missouri River downstream of Fort Peck Reservoir in 2016 need to be aware of two issues.

First, for anglers with a yellow paddlefish harvest tag, opening day of paddlefish season is Sunday May 15; however the first harvest day is Tuesday May 17. This oddity of opening day results from designated Catch and Release days (Sunday, Monday, and Thursday) and mandatory Catch and Harvest days (Tuesday, Wednesday, Friday and Saturday). Thus, in 2016, the first two days of paddlefish season for anglers with a yellow tag is Catch and Release only which is restricted to the Intake Fishing Access Site only.

The second change is a new regulation that applies to all three paddlefish areas and harvest tags (white, yellow and blue). Anglers harvesting a paddlefish anywhere in Montana are required to report their harvest within 48 hours. Options for reporting a harvested paddlefish include on-site where the fish was harvested (like the fish cleaning station at Intake Fishing Access Site) or a phone hotline. Those wishing to report their harvest by phone must call 1-877-397-9453 or 406-444-0356. When reporting a harvest, anglers will be required to provide the following information: angler harvest tag number, jaw tag number (if present on fish), length of the fish measured from eye to fork of the tail, fish sex, date of harvest and the harvest location.

For more details on paddlefish regulations or season dates anglers are advised to read the 2016 Fishing Regulations or call a regional Fish, Wildlife & Parks office.

EVENTS

SEND US YOUR EVENTS!

THE ROUNDUP: PO Box 1207  
111 West Main • Sidney, MT 59270  
406-433-3306 • Fax: 406-433-4114 • Email: classads@esidney.com

**RICHLAND COUNTY**

Events in Sidney unless otherwise listed. MT Zone.

**Wed., May. 11**  
11:30 a.m. - Richland Red Hatters will meet at the Sidney Country Club. RSVP by May 9 to Sylvia at 798-3882 or Margaret at 488-4613.  
7 p.m. - CD Mosaic Tile Boxes. \$30. MonDak Heritage Center. 433-3500.  
**Thur., May. 12**  
2 p.m. - Presenting West Side Elementary Third Graders In: Off Their Rockers. West Side Gym.  
**Fri., May. 13**  
10:30 a.m. - 12 p.m. - Read & Play. Ages 0-5. Sing songs, play games, read books and craft with your child. Richland County Library. Free. 433-1917.  
3 p.m. - 7 p.m. - E-rase your E-waste at Richland County Shop, 2140 W. Holly. Bring your damaged and outdated electronic equipment such as computers, printers, scanners, keyboards, cell phones, cameras, TVs, VCRs, cable TV boxes, fax machines, copiers, stereos, game boys and specialized equipment used in businesses such as hospitals, law enforcement, manufacturing and even the oil field.  
**Sat., May 14**  
8 a.m. - 12 p.m. - Fairview city-wide cleanup and e-rase your E-waste event at the Fire Hall.  
9 a.m. - 3 p.m. - E-rase your E-waste at Richland County Shop, 2140 W. Holly.  
10 a.m. - 4 p.m. - Fun Sewing & Needle Art. Church of the Nazarene, 606 9th St. SW. 406-488-8126.  
10 a.m. - Family Friendly Fellowship Get Together. Fun bible discussions, songs, crafts, a hot pitch-in meal and yummy homemade donuts. Central Park. Free to the public and everyone is invited. Weather permitting. Please call Julia at 406-774-3309 or 406-480-5648 with any questions.  
**Sun., May. 15**  
6:00 a.m. - 1:00 p.m. - 26th Annual Free Will Firemen's Breakfast at the Fire Hall. Breakfast will consists of french toast, sausage, scrambled eggs, juice and coffee. There will also be an open house that morning, which will include different demonstrations and truck rides for kids of all ages.  
2 p.m. - 5 p.m. - Bingo. Sidney Moose Lodge. 406-433-3017.  
**Mon., May. 16**  
7 p.m. - Glass Fusion Dish. \$25. MonDak Heritage Center. 433-3500.  
**Tues., May. 17**  
12 p.m. - 4 p.m. - Walk In Tuesdays. May flowers. \$15. MonDak Heritage Center. 433-3500.  
3:30 p.m. - 5:30 p.m. - Lego Club & Lego League. Richland County Library. 433-1917  
7 p.m. - 8 p.m. - Ceramic Pet Bowl. \$25. MonDak Heritage Center. 433-3500.  
**Wed., May. 18**  
5 - 10 p.m. - Community Pint Night- Meadowlark Public House. \$1 for every pint sold will go to support a community organization.  
5:30 p.m. - A Meal & A Movie: Gold Diggers: Investment Fraud In The Treasure State. Hosted by MT Commissioner of Securities and Insurance. This movie tells the story of two of Montana’s most infamous investment scams in recent history. Sidney Elks Lodge. This event includes a complimentary meal for attendees. There is no admission fee but seating is limited. For reservations call 1-800-332-6148 or visit csimt.gov/fraudtour.  
7 p.m. - 8 p.m. - Agate Necklaces. \$20. MonDak Heritage Center. 433-3500.  
**Thurs., May. 19**  
7 p.m. - Candidates forum, Girard Hall. All local candidates have been invited. Call 406-798-3672 for more information.  
**Sat., May. 21**  
8 a.m. - 5 p.m. - Volunteer Event. Asking for volunteers to help process a very generous donation from the former Book Basket Retail Store. For more information contact Kelly at 433-1917. Richland County Library.  
10 a.m. - Family Friendly Fellowship Get Together. Fun bible discussions, songs, crafts, a hot pitch-in meal and yummy homemade donuts. Central Park. Free to the public and everyone is invited. Weather permitting. Please call Julia at 406-774-3309 or 406-480-5648 with any questions.  
2 p.m. - 3 p.m. - Kids Glass Fusion Sun Catcher. \$15. MonDak Heritage Center. 433-3500.

**WILLIAMS COUNTY**

Events in Williston unless otherwise listed. CT Zone.

**Sat., May. 14**  
8 a.m. - Community Sale. This is a Rummage sale with a silent & live auction and also food and beverage sales. Organized by United Way and Williston Sea Lions. Concessions will open at 7:30 a.m. Raymond Family Community Center.  
9 a.m. - 4 p.m. - Ft. Union Historical Sewing. Missouri Yellowstone Confluence Interpretive Center.  
9 a.m. - 12:30 p.m. - Garden Art Festival. This is a Relay For Life fundraiser event which features garden art, plants and fun garden items. All items are sold through silent auction or unique raffle. Sponsored by Peggy’s Pals Relay For Life Team. Lunch can be purchased from the Bethel Relay Team. Bethel Lutheran Home. Contact Deeann at 701-770-3508.  
**Sun., May. 15**  
3 p.m. - Jim & Cheryl Lingenfelter Concert. Missouri-Yellowstone Confluence Interpretive Center.  
**Tues., May. 17**  
7 p.m. - Williston Camera Club. All levels of experience welcome. James Memorial Art Center. Free.  
**Thurs., May. 19**  
7 p.m. - History Book Club. “The Immortal Irishman” by Timothy Egan. Missouri-Yellowstone Confluence Interpretive Center. Free refreshments. Please call in advance. 701-572-9034.

**MACKENZIE COUNTY**

Events in Watford City unless otherwise listed. CT Zone.

**Wed., May. 11**  
6:30 p.m. - Get To Know Your City Council Candidates. Watford City High School Theatre.  
**Thurs., May. 12**  
7 p.m. - Open public forum about radiation waste featuring Darrell Dorgan. Alexander City Hall.

**DAWSON COUNTY**

Events in Glendive unless otherswise listed. MT Zone

**Wed., May. 18**  
11:30 a.m. - A Meal & A Movie: Gold Diggers: Investment Fraud In The Treasure State. Hosted by MT Commissioner of Securities and Insurance. This movie tells the story of two of Montana’s most infamous investment scams in recent history. This event includes a complimentary meal for attendees. lendive Senior Citizens Center. There is no admission fee but seating is limited. For reservations call 1-800-332-6148 or visit csimt.gov/fraudtour.

MNAXLP



# Welcome New Owners Of Burns Creek Inn In Savage

By Sheridan Martin

Starting April 11th, 2016, Michelle Smith and her husband Bryan became the official new owners of Burns Creek Inn (BCI) Bar & Grill in Savage, MT.

"It was up for sale for quite awhile, and I had always had my eye on it. One night my husband and I were hanging out with the previous owners and they joked about us purchasing the bar, and we thought, 'Well, why not?'," said Michelle.

The bar is mostly family run, featuring Michelle, her husband, their daughter Brittany, and a few others.

Already the family has made some vast improvements, including all new wood paneling, brands on the walls, mirrors on the back of the bar and soon shelving. Future improvements include finishing the bar top, fixing the front step, and placing an awning in the front. "If you haven't been to BCI in a while, definitely come in and check it out! A lot has changed," said Michelle.

The new ownership of BCI have gotten plenty of compliments since opening April 11. "We have gotten so many compliments on our food, especially since we are open for lunch now. Our pizza has been a big favorite; all homemade pizza." Other items on BCI's new menu is filled with tasty burgers like their Cracker Jack burger, which is stuffed with cream cheese, jalapenos, grilled onions and topped with pepper jack cheese. They also have battered cod, chicken strips, a Reuben, soups

and salads, specialty pizza and a fully stocked kids' menu and sides and appetizers. "We also try to buy many of our food items locally. We get our meat from Craig's Meat right here in Savage, and our pork from my brother, Jim Miller, who runs Makin' Bacon."

Michelle mostly enjoys cooking and bar tending and working with her family, as well as providing a destination place for locals. "My great-grandfather ran a bar and I just enjoy providing a place for the people of Savage. High school kids come here for lunch, and families for dinner, and we have a well-serviced bar for the community. I actually had one woman come up to me and say, 'Even though this is a bar, I feel so safe bringing my children here for something fun to do. It's fixed up so nice and the food is great.'"

Soon BCI would like to set up pool tournaments and get dart boards for dart leagues; and install a horseshoe pit. They will also be setting up Karaoke Saturday nights, and once a month activities such as Bingo Monday and Trivia Tuesday. Michelle would also like to bring in live entertainment, whether it be a DJ or someone local, once a month.



Michelle Smith, new owner of Burns Creek Inn Bar & Grill, pictured with her son, Trale.

## Paddlefish Snagging Season Closed in ND

Submitted by North Dakota Fish & Game

The North Dakota Game and Fish Department closed the state's 2016 regular paddlefish snagging season, effective at 9 p.m. Central Daylight Time, on Monday, May 9. Snaggers are reminded that Sunday and Monday are snag-and-release only.

The 2016-18 fishing proclamation allows for the Game and Fish director to close the snagging season early if it appears the harvest will exceed 1,000 paddlefish.

"Snaggers this year have been extremely successful,"

said Greg Power, fisheries chief. "In addition, similar to last year, a high proportion of this year's harvest has consisted of mostly females, further necessitating an early season closure."

An additional four-day snag-and-release season will begin Tuesday, May 10 and run through Friday, May 13. Paddlefish snaggers with an unused paddlefish tag can continue snagging during the additional snag-and-release season, but must release all fish immediately. Snaggers who already used their tag on a harvested paddlefish are not

allowed to participate in the additional snag-and-release period.

Snag-and-release is legal only in that area of the Missouri River starting on the north shore from the Confluence boat ramp then east (downstream) one-half mile, and that area of the Missouri River starting on the south shore from the Confluence with the Yellowstone River then east (downstream) one-half mile (both areas will have boundary signs).

Paddlefish snagging is allowed only from 8 a.m. to 9 p.m. (CDT) during each day of the additional four-day season. The use or possession of a gaff on snag-and-release days is illegal.

Check out the new and improved BCI Bar & Grill in Savage, MT; they serve lunch from 11 a.m. - 2 p.m. on Thurs., Fri., Mon., and Tuesday, and serve dinner Thursday - Tuesday 6 p.m. - 9 p.m. They also have a Facebook page at Burns Creek Inn Bar & Grill, a monthly email newsletter, and are the perfect destination for parties!



**DJ Music**  
**Saturday,**  
**May 14th**

**Vernon's DJ Service**  
Starting at 8pm  
Join Us For Singing and Dancing!

**VFW Sidney**

Post 4099

Mon-Sat 10 am - 2 am  
124 2nd Ave NE • 433-9982



## NATIONAL NURSING HOME WEEK • MAY 8-14



THE 2016 THEME FOR NATIONAL NURSING HOME WEEK IS:

♥ "It's a Small World with a Big Heart" ♥



### Family, Life, Love

At Sidney Health Center Extended Care, we take care of the elderly and learn from their personal journeys. Get to know our community through the people who raised their families in the MonDak region.

Join our team... It's a journey worth exploring!

104 14th Ave. NW • Sidney, MT • 406-488-2300 • [www.sidneyhealth.org](http://www.sidneyhealth.org)

## Livestock Per Capita Fee Payments Due May 31

Helena – The Montana Department of Revenue mailed 2016 livestock per capita fee bills this week. Payment is due by May 31. Livestock owners can pay online at ReportYourLivestock.mt.gov or by mail with a check.

The 2015 Legislature changed the payment due date from November 30 to May 31 to decrease the time between livestock reporting and payment. March 1 was the deadline for livestock owners to report livestock they owned as of February 1.

If owners already paid their 2016 fees when they reported their livestock, they will not receive a bill.

All Montanans benefit from programs funded by per capita fees. Livestock producers benefit from programs to monitor animal health, monitor and restrict livestock imports, track animal movements, prevent and investigate livestock theft, and manage predators. The general public benefits from programs that prevent the spread of animal diseases to humans.

For more information, visit ReportYourLivestock.mt.gov or call toll free (866) 859-2254, in Helena, 444-6900.

## Super Saving Sale

Modulars starting at \$65 per sq. ft.



LOCK IN SALE PRICE, TAKE DELIVERY LATER!

• WOW!! Beautiful 2200 Sq. Ft. Modular with all the bells & whistles.

SAVE  
\$1000's

• 1600 sq. ft. modular, 3 bedroom, 2 bath, 6" walls, glamour bath, low-e windows, upgraded cabinets. **ONLY \$113,900**

**NEW HOMES**  
of the **FUTURE**

**406-248-1100**

[www.newhomesthefuture.com](http://www.newhomesthefuture.com)

7239 South Frontage Rd., Billings, Montana 59101



It's summer time and the kids are out of school! It's exciting, but during summer some families don't have access to school nutrition and need help with kid friendly food staples.

**YOU CAN HELP BY  
DONATING A JAR OF  
PEANUT BUTTER  
DRIVE  
TO HELP FIGHT CHILD  
HUNGER IN OUR  
COMMUNITIES.**

Your local Ford dealers and food banks are putting on the Ford Peanut Butter Drive this May. Check with your local Ford dealer for details. Drop off locations will vary.



**215 East Main • Sidney, MT**  
**433-1810 or 1-800-482-1810**  
[eaglecountryfordsales.com](http://eaglecountryfordsales.com)

VISIT **FORDFEEDSKIDS.ORG** TO DONATE TO THE FOOD BANK OF YOUR CHOICE.



**Sierra Osborne, Seth Prevost – Sr. Speech Division**

**Sierra Osborne, Jake Kunda, Johren Carpenter, Kyle Topp – Career Communications**

# Catchable Trout, Catfish, Pike Stocked

**WatfordCityHomes.info**



# FIREMEN'S ANNUAL BREAKFAST

- Free Will Donation | Rides & Fun For The Kids | Come Support Our Firemen! -

**Sunday, May 15 • 6 am - 1 pm • Sidney Fire Hall**

Serving sausage, french toast, scrambled eggs, juice & coffee



## DPHHS Reminds Montanans To Take Precautions To Avoid Hantavirus Infection This Spring

Submitted by DPHHS

The Department of Public Health and Human Services (DPHHS) reminds Montanans to be aware this spring about the risk of hantavirus.

Health officials say that hantavirus infection can occur during any month, but spring and summer months pose the highest risk for exposure as people clean cabins, outbuildings and campers or begin spring and summer recreation activities outdoors and come in contact with mouse and rat nesting materials. "Before you start cleaning garages, sheds or dusting off your camping gear, it is important to look for evidence of rodents and take steps to protect yourself," said DPHHS Director Richard Oppen.

With 42 cases of hantavirus reported since 1993, Montana has one of the highest rates of infection in the U.S. Hantavirus infection can cause severe illness and death with one in four of Montana cases resulting in death.

Studies in Montana have shown that the deer mouse, the most common host of the virus, is well dispersed throughout

the state and often tests positive for the virus. "When you open the door on your garage or cabin to begin spring cleaning, stop and think," Oppen cautions. "People can become infected when they breathe in air contaminated by the virus. It is important to not do things that raise dust, such as sweeping or vacuuming if signs of rodents are present. Protecting yourself and cleaning correctly will protect you and your family."

The best way to prevent hantavirus transmission is to control rodent populations in areas where you live and work. When cleaning areas where rodents may have been present, the following precautions should be followed:

Wear rubber or plastic gloves.

Thoroughly spray/soak area with a disinfectant or mixture of bleach and water to reduce dry dusty conditions in the area being cleaned.

Wipe or mop the area with a sponge or paper towel (throw away items after use).

Wash hands thoroughly with soap and warm water after removing gloves.

Never sweep or vacuum in these areas as this can stir up dust and aerosolize the droppings.

More information on hantavirus and its prevention can be found DPHHS on the website at: <http://www.dphhs.mt.gov/>

**UNION GATEWAY AGENCY**  
Your Insurance Team  
Independently  
Representing:

UGA

~Life  
~Health  
~Medicare Supplement  
~Medicare Part D  
~Group Health  
~Vision  
~Dental  
~Long Term Care

BlueCross BlueShield of Montana  
Aflac  
vsp Vision care for life

309 2<sup>nd</sup> St NW  
Sidney MT 59270  
phone 406-488-4366  
fax 406-630-4433

©2011 Vision Service Plan. All rights reserved. VSP and Vision care for life are registered trademarks of Vision Service Plan.

## County Agent Update

By Danielle Steinhoff

### Cutworms are active

North Dakota State University Extension Service puts out weekly reports called the Crop & Pest report. These reports start in May and go through early fall, which highlights all of the times where pests, diseases and stress factors can occur for plants. One article in this report is about Cutworms, more exactly the Army and pale western cutworms that have been reported feeding on winter wheat and weedy cultivated fields in northwest North Dakota. The army cutworm's larvae are gray to brown with the top darker than the bottom with a pale mid-dorsal line. The army cutworm is a climbing cutworm that consumes the leaves of its host plant; the plant can recover from army cutworm feedings. These cutworms are currently at the end of the development and

feeding period, so no control is recommended. Army cutworm moths will emerge in June and fly to the Rocky Mountains for a time of inactivity, late August to October they will fly back to the plains to lay eggs in the soil. The report states that army cutworms are primarily an early season pest of cereal crop, especially winter wheat. The pale western cutworm overwinters in North Dakota as eggs, which hatch soon into larvae early in the spring, when temperatures warm up to 50°F. These cutworms are about 1 ½ inches long when mature, and pale yellow with a white mid-dorsal line and two black inverted 'V's on head. They feed on the plant stems below the ground, if the growing point is destroyed from the larva feeding, the plant will not survive. Field scouting for cutworms is critical and should begin as soon as the crop emerges, then the fields should be checked twice a week until past the early growth stages. Cutworm

damage symptoms are foliar defoliation or cut/wilted plants, which lead to open patches in a field. Examining 100 plants per five sampling sites by walking a 'W' or 'V' pattern for a total of 500 plants in a field is recommended. The economic threshold for cutworms varies by crop.

Here's some of the thresholds for North Dakota field crops; alfalfa- 3 to 4 larvae per square foot (new stands only 2 per square foot), canola- 1 larvae per 3 feet of row, chickpeas/Field peas/Lentils- 2 to 3 larva per square meter, Corn- 3-6% of the plants cut, Small grains- 4 to 5 larvae per square foot, soybean- 1 larva per 3 feet of row, sugarbeet- 3 to 5 larvae per square foot and sunflowers- 1 larva per square foot. There are several different insecticides that are registered for cutworm control, consult the 2016 North Dakota Field Crop Insect Management Guide for more details on insecticides.

**Roundup**  
WEB.COM

Everything  
Roundup  
on the web.

MNAXLP

## USED EQUIPMENT SALE!

Skid Steers • Wheel Loaders  
Backhoes • Light Towers • Pumps  
Scissorlifts • Boomlifts • Forklifts  
Portable Generators (3kW-125kW)

**ALL UNITS AT  
SPECIAL PRICING!**  
WARRANTY & FINANCING AVAILABLE.

**United Rentals**

Ken Jacquot, Territory Sales Manager  
701-339-0616 • [kjacquot@ur.com](mailto:kjacquot@ur.com)  
5083 Bennett Industrial Drive • Williston, ND  
[unitedrentals.com](http://unitedrentals.com)

## BELOW INVOICE spring clearance!

**ALL NEW 2015's**

**INVOICE MINUS \$500 & MINUS REBATES**

2015 Edge SEL 3384  
2015 Edge SEL 3465  
2015 Escape SE 3375  
2015 Escape Titanium 3438  
2015 Expedition Limited EL 3418  
2015 Expedition Limited EL 3391  
2015 F-150 Lariat 3411  
2015 F-150 Lariat 3423  
2015 F-150 Lariat 3430  
2015 F-150 Lariat 3443  
2015 F-150 Lariat 3476  
2015 F-150 Platinum 3431  
2015 F-350 Superduty XLT 3361

**Call Peggy or Jackson @ 406-433-1810**  
**Trade-ins Welcome!**



215 East Main • Sidney, MT  
433-1810 • 1-800-482-1810 | [eaglecountryfordsales.com](http://eaglecountryfordsales.com)

## Richland County Fair & Rodeo

"Where The Road Ends & The Fun Begins"

**August 3-6, 2016**

**PRESALE TICKETS AVAILABLE**

(Tickets Available Only At The Fair Office)

**BEGINNING MAY 18 • 8:30 AM**

Package Deal \$68: 1 Concert Ticket, 1 Admission Button, 1 Thurs Rodeo Ticket & 1 Fri Rodeo Ticket

## In Concert

Sat, Aug 6<sup>th</sup> • 7:30 pm



CHRIS YOUNG

**Carnival**  
**Pay One Price**  
**Passes \$20**

**Concert Tickets**

**Presale:**

General: \$45 • Reserved: \$50

**During Fair Week:**  
(If Available)

General: \$50 • Reserved: \$55

With Special Guest  
Logan Mize



**PRCA Rodeo | Brookman Rodeo LLC**  
Thurs & Fri, August 4th & 5th  
7:30pm each night

**406-433-2801**





# Eastern C Divisional Track & Field Meet

## Thursday, May 19<sup>th</sup> At The Sidney Track Field



### Schedule of Events:

Track Events					
10:00am	100 Meter Hurdles Trials	Girls	3:50pm	3200 Meter Run	Girls
	110 Meter Hurdles Trials	Boys		3200 Meter Run	Boys
10:30am	100 Meter Dash Trials	Girls	4:30pm	1600 Meter Relay	Girls
	100 Meter Dash Trials	Boys		1600 Meter Relay	Boys
10:50am	1600 Meter Run	Girls	<b>Field Events</b>		
	1600 Meter Run	Boys	10:00am	Pole Vault	Boys
11:20am	200 Meter Dash Trials	Girls		Shot Put	Boys
	200 Meter Dash Trials	Boys		Javelin	Girls
11:50am	400 Meter Relay	Girls		Long Jump	Girls
	400 Meter Relay	Boys	11:30am	Discus	Boys
12:20pm	400 Meter Dash	Girls		Triple Jump	Boys
	400 Meter Dash	Boys		High Jump	Girls
Lunch Break			Lunch Break		
2:00pm	100 Meter Hurdles Finals	Girls	1:15pm	Javelin	Boys
	110 Meter Hurdles Finals	Boys		Long Jump	Boys
2:20pm	800 Meter Run	Girls		Pole Vault	Girls
	800 Meter Run	Boys		Shot Put	Girls
2:40pm	100 Meter Dash Finals	Girls	2:45pm	High Jump	Boys
	100 Meter Dash Finals	Boys		Discus	Girls
3:00pm	300 Meter Hurdles	Girls		Triple Jump	Girls
	300 Meter Hurdles	Boys			
3:30pm	200 Meter Dash Finals	Girls			
	200 Meter Dash Finals	Boys			

776-2447

Savage, Montana

- custom meat processing
- curing & smoking
- sausage & Jerky
- wild game

Slaughter at the plant or your farm!

Participating Teams: Lambert, Grenora, Froid/Med. Lake, Brockton, Culbertson, Bainville, Fairview, Savage & Circle.

203 2nd St. NW • Sidney

406-482-3737

www.reeseandraysiga.com

Family Dining

Open 4:30 pm Tue-Fri

2 pm Sat & Sun

Fairview • 406-742-5180

**We Support the Red Hawks!**

**Homestead Elevator**

Homestead, Froid

406-963-2343

• Video • Internet

• Wireless • Land Line

• Long Distance

**800.636.6680**

Scobey | Glasgow | Plentywood

Wolf Point | Poplar | Williston

Worden | Crow Agency

www.nemont.net

LAMBERT, MONTANA

406-774-3331

SIDNEY, MONTANA

406-433-3014

406-433-2508

406-742-5224

Fairview, Montana

416 S. Ellery

LAMBERT HISTORICAL SOCIETY & FOX LAKE SENIOR CITIZENS CENTER

Lambert, MT

**406-774-3439**

Open 10am - 2am Daily

401 Ellery Avenue

Fairview, MT

406-742-8110

**Steakhouse Hours:**

Sun-Thurs: 5-9pm

Fri & Sat: 5-10pm

Open 9am - 4pm

Monday - Friday

Box 465 • Fairview, MT

406-742-5203

**FDIC**

406-774-3475

Lambert, MT

Your savings federally insured to \$250,000.

National Credit Union Adm., a U.S. Govt. Agency

Serving Daniels, Sheridan & North Valley Counties

**Scobey, MT**

P.O. Box 1160 • 487-5391

**Medicine Lake, MT**

PO Box 267 • 789-2209

**Culbertson Pharmacy**

Open Mon-Sat 9-5

115 Broadway

Culbertson, MT

**406-787-5313**

Keith Brisben

Pharmacist

Savage, MT

**406-776-2334**

**Finnicum's**

Hardware

Furniture

Appliances

Giftware

Culbertson, MT • 406-787-5213

**MEDICINE LAKE AG SUPPLY MARATHON SEED CLEANING**

Chris & Amy Ator

Owners

PO Box 245 • 220 Main Street

Medicine Lake, MT 59247

789-2524 • 789-2493

Toll Free 1-866-528-7733

Cell 765-7453

marathon@nemontel.net

776-2500

SAVAGE, MT

• Oil Field Roads & Locations

• Reclaim Work

• Gravel & Scoria Hauling

Fairview, MT

**406-742-5549**

neuconst@midrivers.com

**Mon-Kota, Inc.**

Fertilizer & Irrigation

Sales & Service

**Reinke plus program**

Platinum Plus Certified

Fairview, MT • 701-844-5300

**Reinke**

MORE RIGHT THAN RAIN

**QUINNELL ELECTRIC**

- Commercial
- Residential
- Remodels
- New Construction

**Chuck Quinnell**

**406-776-2331**

3½ miles north of Fairview on Hwy 58

701-744-5752

oasis@midrivers.com

All You Need In One Quick Stop!

**B&S QUICK STOP**

Brockton, MT • 786-3229

**HURLEY'S OILFIELD SERVICES**

- Potable Water • Sewer System
- Loaders • Communications
- Backhoe • Trucking
- Skid Houses • Porta Potties

Dispatch: 701-844-1234

Fairview, MT

**Froid Grocery llc.**

107 Main • Froid, MT

**406-766-2413**

2429 W. Holly St.

**406-488-4400**

SIDNEY, MT

**488-4657**

Sales • Service • Installation

**TRANE**



# GRADUATION 2016

## Culbertson High School Graduation • May 21<sup>st</sup> at 2:00 pm



Alexi Bidegaray



Shay Bridges



Adam Buxbaum



Renee' Granada



Ashton Handy



Eric Hendrickson



Ethan Hendrickson



McKade Mahlen



Christopher Melbourne



Taylor Olson



Austin Pederson



Lindsay Reid



Tyrel Schneekloth



Wyatt Shelton

## Lambert High School Graduation • May 21<sup>st</sup> at 3:00 pm



Chelsea VanGorder



Madison VanGorder



Quentyn Evenson



Hazen Fink



Taylor Fink



Brock Frisbie



Giorgi Gioshvili



John Helmuth



Delaney Krenning



Brock Miller



Marshall Oland



Madison Patterson



Rachel Prevost



Téa Thiessen

## Bainville High School Graduation • May 14<sup>th</sup> at 2:00 pm



Robert Trayler



Sean Williams



Tim Wright



Lexi Anaya



Mikayla Dimmitt



AJ Friese



Samantha Holte



Beau Hyatt



Kevin Kramer



Andri Rhodes



Brandon Ross



Katie Sandvik



Michael Sheehan



Austin Strickland

## Med Lake High School Graduation • May 22<sup>nd</sup> at 4:00 pm



Taurean Baxter



Abbie Deubner



Chantz Hove



JD Stratton



Hunter Tufton



Jared Tufton



**Hurley's Oilfield Services**  
Fairview, MT • 701-844-1234

**Sidney Sugars Inc.**  
Sidney, MT • 406-433-3301

**Interstate Engineering**  
www.interstateeng.com

**Reynolds Market**  
Sidney, MT • 406-433-2305

**S/L Services, INC.**  
Sidney, MT • 406-433-6754

**Frontier**  
Sidney, MT • 406-488-4657

**Pepsi-Cola of Sidney**  
406-433-3403

**Tri County Implement**  
Sidney, MT • 406-488-4400

**Reese & Ray's IGA**  
Sidney, MT • 406-482-3737

**CQ Bar & Grill**  
Lambert, MT • 406-774-3421

**Lower Yellowstone REC**  
Sidney, MT • 406-488-1602

**Lambert Historical Society & Fox Lake Senior Center**  
Lambert, MT • 406-774-3439

**Sonda's Solutions**  
Sidney, MT • 406-433-6757

**Gem City Motors**  
Sidney, MT • 406-433-3120

**Western Cooperative Credit Union**  
Williston, ND • 701-572-4000

**Roosevelt Medical Center**  
Culbertson, MT • 406-787-6400

**Town & Country Repair**  
Lambert, MT • 406-774-3475

**Nemont discover us**  
www.nemont.net • 800-636-6680

**Richland Pump & Supply**  
Sidney, MT • 406-488-8706

**Elk River Printing**  
Sidney, MT • 406-433-4375

**Richland Federal Credit Union**  
Sidney, MT • 406-482-2704  
Culbertson • 406-787-5890

**Nortana Grain**  
Lambert, MT • 406-774-3331

**Culbertson Pharmacy**  
Culbertson, MT • 406-787-5313

**Smokey's Bar & Casino**  
Bainville, MT • 406-769-2871

**The Roundup**  
Sidney, MT • 406-433-3306

**Daniels-Sheridan FCU**  
Med Lake, MT • 406-789-2209

**Medicine Lake Ag Supply**  
Med Lake, MT • 406-789-2524

**Sheridan Electric**  
Med Lake, MT • 406-789-2231



GRADUATION 2016

Savage High School Graduation • May 14<sup>th</sup> at 1:00 pm



Trey Bloesser



Cara Clemmer



Ashley Green



Riley Hagler



Paxton Miller



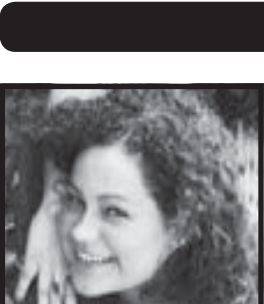
Gage Salsbury



Shelby Stanford



Kanyon Tysver



Mireya Gardner



Bailey Christofferson



Michael Eylander



Destiny Long



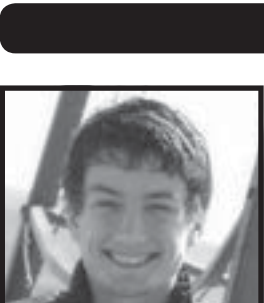
Momori Nakamura



Jace Qualley



Ryah Young



Ian Fatzinger



Shaye Johnson



Skilor May



Brittany Whiteman



Fairview High School Graduation • May 21<sup>st</sup> at 3:00 pm



Taylor Baxter



Cole Berry



Daniel Blondell



Michael Calvert



Reagan Finsaas



Rae'Van Hall



Benjamin Hardy



Bridger Hurley



Josh Hurley



Joshua Johnson



Mercedes Klein



Jonathon Lebsock



Gary Lyons



KateLyn Mocko



Dustin Rice



Brooke Richards



Mitchell Shaide



Sadie Swenson



Alex Wicks



Caitlin Yadon



**Richland Pump & Supply**  
Sidney, MT • 406-488-8706

**Frontier**  
Sidney, MT • 406-488-4657

**Congratulations, Class of 2016** *From the Fairview School Staff*

**Chaznline Construction**  
Fairview, MT • 406-798-7700

**Triple S Disposal**  
Savage, MT • 406-776-2500

**Sidney Sugars, Inc.**  
Sidney, MT • 406-433-3301

**Richland Federal Credit Union**  
Sidney, MT: 406-482-2704  
Culbertson: 406-787-5890

**Tri County Implement**  
Sidney, MT • 406-488-4400

**Reynolds Market**  
Sidney, MT • 406-433-2305

**Pepsi-Cola of Sidney**  
406-433-3403

**Elk River Printing**  
Sidney, MT • 406-433-4375

**Stockman Insurance**  
Richey, MT • 406-773-5521

**S/L Services, INC.**  
Sidney, MT • 406-433-6754

**MonDak Family Clinic**  
Fairview, MT • 406-742-5621

**Reese & Ray's IGA**  
Sidney, MT • 406-482-3737

**Gem City Motors**  
Sidney, MT • 406-433-3120

**Lower Yellowstone REC**  
Sidney, MT • 406-488-1602

**Hurley's Oilfield Services**  
Fairview, MT • 701-844-1234

**Waterhole #3**  
Fairview, MT • 406-742-5224

**Merchants Bank**  
Fairview, MT • 406-742-5203

**Double Barrel Saloon & Casino**  
Fairview, MT • 406-742-8110

**Interstate Industrial**  
Fairview, MT • 406-744-9051

**Mon-Kota Fertilizer**  
Fairview, MT • 701-844-5300

**W.L. Neu Construction, Inc.**  
Fairview, MT • 406-742-5549

**Korner Motel**  
Fairview, MT • 406-742-5259

**Sonda's Solutions**  
Sidney, MT • 406-433-6757

**The Oasis Greenhouse**  
Fairview, MT • 406-744-5752

**Interstate Engineering**  
www.interstateeng.com

**Powder Keg**  
Fairview, MT • 406-742-5180

**Quinnell Electric**  
Savage, MT • 406-776-2331

**The Savage Mine**  
Savage, MT • 406-798-3651

**High Caliber Sports**  
Sidney, MT • 406-433-1800

**Craig's Meat Processing**  
Savage, MT • 406-776-2447

**Pioneer Brand Products**  
Savage, MT • 406-776-2400

**Miller's Garbage Service**  
Savage, MT • 406-776-2334

**Froid Grocery, LLC**  
Froid, MT • 406-766-2413

**Milne Implement Co.**  
Glendive, MT • 406-377-2633

**Farmers Elevator & Ag Center**  
Richey, MT • 406-773-5758

**The Roundup**  
Sidney, MT • 406-433-3306



# GRADUATION 2016

## Sidney High School Graduation • May 22<sup>nd</sup> at 2:00 pm



Dameli Aimbetova



Amanda Anderson



Dominic Anderson



Kyler Anderson



Luke Beenken



Camden Berka



Clay Carpenter



Ryan Chatterton



Heather Chreiman



Bryana Christensen



Casy Christensen



Reiley Christophersen



Taylor Christophersen



Rian Cobb



Bridger Coffman



Tenna Cooley



Sierra Crowe



Megan Deming



Tetyana Denysenko



Matt Dey



Christian Eggar



Tristin Fahrnow



Desirae Fasching



Tayler Fischer



Matthew Folstad



Larren Foust



Clay Fox



Aaron Galvan



Christopher Gartner



Gunnar Gillespie



Dakota Gilligan



Kasey Godfrey



Brady Gorder



Alexis Haggerty



Kelsie Hall



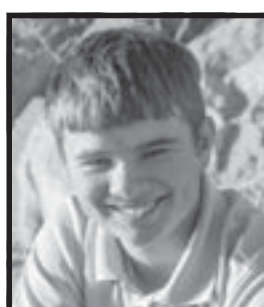
Kobie Hall



Harmonie Hampton



James Haraldson



Cayden Hecker



Tel Hermanson



Cyrus Hintz



Mikayla Holley



Robert Horton



Daniel Johnson



Dylan Johnson



Terry Johnson



Aubrey Kessel



Weini Ku



Ryan Lander



Braxten Larson



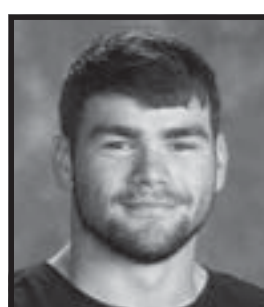
Nicholas Larson



Tess Ler



Sean Lofthus



Marcus Lovegren



Dillon Lunderby



Quinn McGlothlin

**Sunny's Family Restaurant**  
Sidney, MT • 406-433-1839

**CM Built Doors**  
Sidney, MT • 406-480-5570

**Elk River Printing**  
Sidney, MT • 406-433-4375

**Sidney Sugars Inc.**  
Sidney, MT • 406-433-3301

**Richland Federal Credit Union**  
Sidney, MT • 406-482-2704 | Culbertson • 406-787-5890

**Quilts & More**  
Sidney, MT • 406-482-3366

**Tri County Implement**  
Sidney, MT • 406-488-4400

**Reese & Ray's IGA**  
Sidney, MT • 406-482-3737

**Pepsi-Cola of Sidney**  
406-433-3403

**Lower Yellowstone REC**  
Sidney, MT • 406-488-1602

**Screen Play**  
Sidney, MT • 406-433-2400

**East-Mont Enterprises**  
Sidney, MT • 406-433-2910

**Taco Johns**  
Sidney, MT • 406-433-2295

**Richland Pump & Supply**  
Sidney, MT • 406-488-8706

**Gorder Trenching**  
Sidney, MT • 406-482-9672

**Beagle Properties**  
Sidney, MT • 406-482-4480

**Gem City Motors**  
Sidney, MT • 406-433-3120

**Interstate Engineering**  
www.interstateeng.com

**Hedahl's Auto Plus**  
Sidney, MT • 406-482-3304

**Reynolds Market**  
Sidney, MT • 406-433-2305



# GRADUATION 2016

Sidney High School Graduation • May 22<sup>nd</sup> at 2:00 pm



Coleton McIntyre



Chelsey Metcalf



Lindsey Minow



Micala Morehouse



Kyle Mueller



Blaine Nelson



Kolton Nevins



Hunter Nice



Cayla Norby



Lane Obergfell



Trista Papka



Lucas Partridge



Rafael Perez



Skylar Petrik



Taryn Potts



CeCelia Propp



Mercedes Rasmussen



Serena Raveling



Ashley Ray



Brianna Reid



Shelby Reidle



Emily Rindahl



Travis Rogers



Alfonso Rosales



Trent Schilling



Hunter Severson



Brett Smith



Danielle Steinley



Mattie Steinley



Michael Stevens



Cade Strasheim



Tyler Sturgis



Kade Swisse



Mason Thiel



Kaitlyn Tibbits



Peyton Tofte



Sarah Turek



Wyatt VanBuren



Maika Vang



Devon Watkins



Jarod Watson



Austin Watterson



Ethan White



Christopher Wick



Nang Widiyasa



LaTasha Wieferich



Preston Wilhelm



Katlyn Winter



Lane Wold



DeAunna Wraith



Dymond Wraith



Marlee Zentner



Shanan Zueger



**Brorson Elementary School**  
Sidney, MT • 406-798-3361

**Rau Elementary School**  
Sidney, MT • 406-482-8725

**CHMS, P.C.**  
Sidney, MT • 406-433-2092

**Action Auto**  
Sidney, MT • 406-433-2312

**Hurley's Oilfield Services**  
Fairview, MT • 701-844-1234

**B&J Heating Inc.**  
Sidney, MT • 406-482-4744

**Fulkerson-Stevenson Funeral Home**  
Sidney, MT • 406-488-2805

**Gurney Electric**  
Sidney, MT • 406-482-3204

**Seitz Insurance**  
Sidney, MT • 406-433-1411

**Party Central**  
Sidney, MT • 406-433-4FUN

**Bar JV Angus**  
Fairview, MT • 406-798-3653

**Farm & Home**  
Sidney, MT • 406-433-3400

**The Depot Casino**  
Sidney, MT • 406-433-4650

**PJ's Auto Glass & Tint**  
Sidney, MT • 406-798-3686

**Footers**  
Sidney, MT • 406-433-7827

**Frontier**  
Sidney, MT • 406-488-4657

**High Caliber**  
Sidney, MT • 406-433-1800

**SnL**  
Sidney, MT • 406-433-6754

**Sonda's Solutions**  
Sidney, MT • 406-433-6757

**Olson Plumbing & Heating**  
Sidney, MT • 406-482-4027

**Farm Bureau Financial Services**  
Sidney, MT • 406-433-1515



# The Roundup Classifieds

Reach Over 21,000 Readers Each Week In Eastern Montana & Western North Dakota And Always On The Internet at [roundupweb.com](http://roundupweb.com)  
(Paypal required for online purchases)

Add a photo  
to your classy online!  
(additional charge)

**Now Taking  
Credit Cards!**  
(5% charge added  
to all transactions)

**Get Up To 30 Words For Just \$9.25 • Deadline: Monday noon**

#### HELP WANTED

##### PT KITCHEN HELP

The Eagles Club, Watford City, is looking for part time kitchen help. Stop in 1 mi. south Hwy. 85S for an application.

##### CARRIERS NEEDED

Need extra cash or want to get some exercise while getting paid? We have carrier routes available in most parts of Sidney. 406-433-3306 or fill out application at The Roundup, 111 W. Main, Sidney.

##### HELP WANTED

Part-time, help wanted. 1 - 2 days a week. Bartender experience necessary. Call Betty at 480-7068 or stop in to the VFW to grab an application.

##### REAL ESTATE COMMERCIAL/RETAIL PROPERTY FOR SALE OR LEASE

**5 ACRE COMMERCIAL  
LOTS FOR SALE**  
Conveniently located between Williston & Watford City, right off Hwy. 85. Graded recently. Perfect for a new shop or business! Lots have rural water, power, RTC & electric right at the road. Hwy. 85, S. on 140th Ave. 77 NW, 1/4 mile on right. 406-471-4049.

##### FOR RENT

##### SPACE FOR YOUR BUSINESS

Looking for space for your business? We have several locations to choose from. Just opened up! Large office space complete with individual private offices. All utilities pd., wi-fi, internet, cellphone booster, in-house restaurant. Some spaces include windows for signs or displays. Yellowstone Marketplace, Central Ave. & West Main, Sidney. Call Linda at 406-489-1945 or Jody at 406-480-7279.

##### FOR RENT

For rent in Watford City, ND. Mobile home lots, RV spaces & truck parking. Call for pricing. 701-842-3357.

##### FARM & RANCH

##### FOR SALE

'05 Case RBX, 540 pto, net & twine wrap. '02 F-350, 4x4, auto, 7.3 diesel hydrobed. More information call 406-480-9634.

##### SIDNEY FEEDS

Sweet Pro Premium feed supplements for cattle & horses, Hefty Seed Co., south of Sidney. 406-488-4338.

##### MINERALS & SUPPLEMENTS

Complete line of minerals & supplements, Crystalx protein & mineral tubs for cattle, horses & sheep. All types of liquid feed for livestock. Calving supplies. R&J Ag Supply 406-488-1953, 406-480-2006, 1-800-233-2499, Sidney, MT.

##### VERMEER HAYING EQUIPMENT

See us today for all your haying & feeding equipment, sweeps & farm oil. Anderson Vermeer Sales & Service. Open Mon.-Fri., 8 a.m.-5:30 p.m. 701-828-3358 or 701-828-3482 (after hrs.). Alexander.

##### FOR SALE

Hay for sale. Can deliver any amount. 701-677-5696.

##### FOR SALE

Corral and windbreak board for sale. Custom saw milling to your dimensions. Call 406-478-0154.

##### VEHICLES FOR SALE

##### FOR SALE

'11 Ford F-150 Ecoboost with FX4 pkg. Black, leather interior, 55,000 miles, good condition. Asking \$27,000. 406-480-5057.

##### SERVICES

##### FOR RENT

Crane with operator. \$75/hr, 60' reach. 1ton lifting capacity. 701-770-6375.

##### FOR RENT

Backhoe with operator. \$75/hr. 701-770-6375.

##### R&L PAINTING

Will paint houses, barns, quonsets, silos, grain bins, etc. References available. R&L Painting, call 406-488-8244 or 406-480-4055.

##### TABLES & CHAIRS FOR RENT

Parties, weddings, get togethers. Ultimate Showdown Assoc. located at Hefty Seed Co. South of Sidney, has tables & chairs for rent. Will deliver. Call 406-488-4338.

##### MISCELLANEOUS LOOKING FOR

Needing summer pasture. call 406-480-9634.

##### FOR SALE

##### ALUMAWELD BOAT FOR SALE

'81 Alumaweld 17 1/2 ft boat, center console. '89 115 HP Mercury with approx 20 hrs on rebuilt power head. California jet, new liner, stainless steel impeller, new water pump. Power trim, new Bimini top. MINN-Kota foot control front mount trolling motor. This has plenty of storage in the front and middle seating areas. Shorelander trailer. \$7500.00 obo. Selling for health reasons. 406-488-5837 or 406-480-2106.

##### TOPPER FOR SALE

Gray topper - 6 1/2'. fits 2006 - 2007 Ford F-150. 701-744-5329.

#### Rocky Mtn. Hay Grinding and Fencing



We have a Jones Mighty Giant hay grinder ready to work. Has a 400 horse cat to make easy work out of most any hay.

2 hour min charge and hourly rate after that

**(406) 223-6671**

## For Sale:

Yearling Angus Bulls.  
Low birth weights,  
good quality with  
good dispositions.

Wahlstrom Angus | Alexander, ND  
701-572-0221 • 701-580-2601 • 701-572-5179

##### SY Soren

New! AgriPro's Highest Return Per Acre

##### SY Ingmar

Latest AgriPro Release  
Very High Protein PLUS  
High Yield Potential

##### Brennen

Balanced With High Yield and Protein

##### SY605 CL

High Yield CLEARFIELD® Spring Wheat

##### Trapeze Yellow Pea

New High Yielding Variety with  
Good Height and Standability

## SKOV SEED

Randy Skov | Fairview, MT

406-747-5217 Home | 406-489-0165 Cell

*Call Today!*

**AgriPro**

©2015 AgriPro and Skov are trademarks of AgriPro. All other names are trademarks of their respective owners. AgriPro is a registered trademark of AgriPro. All other names are trademarks of their respective owners.

## Mini-Storage



### STORAGE UNITS AVAILABLE

20X20 • 10X20  
10X16 • 8X9

Sidney, MT  
482-3799 or 482-2666

## NOW SERVING SIDNEY!



Pickup & Drop-offs in Sidney at

**MICROTTEL**  
INN & SUITES  
BY WYNDHAM

406-482-9011  
1500 S Central Behind McDonalds

Watford City Available At  
Meyer's Department Store  
701-444-2906  
200 N Main • Watford City, ND

Alterations Are Available  
Welders Jeans .....\$9  
Welders Shirts .....\$6  
Starched Dress Shirts...\$4<sup>55</sup>  
Starched Jeans .....\$8<sup>50</sup>

1129 2nd Avenue West  
Williston, ND 58801  
**701-572-3734**  
Mon-Fri: 8am - 6pm • Sat: 9am - 3pm

## The Roundup

Do you have news or photos you  
would like in The Roundup?

Richland ..... **Meagan Dotson**  
County 406-478-0517

Roosevelt... **Sheridan Martin**  
County 406-529-4031

McKenzie.....**Kathy Taylor**  
County 701-842-6188

## We Welcome Your Engagement and Wedding Announcements

We Will Publish Your  
Announcement,  
including a photo,  
**FREE** of Charge  
and in color whenever  
possible

Invitations will be charged for

Send your  
announcements to  
Box 1207, Sidney, MT  
email to  
[email@esidney.com](mailto:email@esidney.com)  
or stop by our office at  
111 W. Main, Sidney

## The Roundup



### EMPLOYMENT OPPORTUNITIES

Sidney Health Center's most valuable resource is the people  
who serve our patients, residents and guests. Join our team!

- Admissions Receptionist
- Certified Nurses Assistant  
*Extended Care*
- Dining Services  
*Utility Worker*
- Pre-Authorization Specialist
- Pharmacy Technician
- Registered Nurses

**We promote a Work-Life Balance**



9 Out of 10 Employees Agree:  
"I don't have to choose between  
my job and family!"

For additional information or to apply online, please visit our website  
or contact: Marilyn Olson • Phone: (406) 488-2571  
[mjolson@sidneyhealth.org](mailto:mjolson@sidneyhealth.org) • 216 14th Ave SW • Sidney, MT

Visit Our Website at: [www.sidneyhealth.org](http://www.sidneyhealth.org)

## The Roundup Auto Trader

### Only \$17 A Week!

If you run it for 2 weeks & it doesn't sell, we'll run  
it for 2 more weeks..... **FREE!**

#### 2000 Ford F450 - Passenger Bus

Includes wheelchair lift



#### MAGRUM MOTORS

1820 2nd St. W.  
Williston, ND  
701-572-0114

**\$8,000**

#### 2007 Honda Rebel – Black

Excellent condition, only 3800 miles, have nice  
windshield & saddle  
bags



**Call:**  
**406-787-5279**

**\$1,600**  
O.B.O.

#### 2004 GMC 1/2 Ton Work Truck

Includes utility topper, V-6, 5 speed, 89500 miles



**Call:**  
**406-480-5000**

**\$6,000**

### Want to place an ad in the Auto trader?

[classads@esidney.com](mailto:classads@esidney.com) • (406) 433-3306 for details



**5TH WHEEL FOR SALE**  
54' 5th Wheel Camper. Washer & dryer. Household 2 furnaces & 2 a/c. \$35,000.00. Call 406-360-1304.

**FORKLIFT FOR SALE**  
Hyster forklift for sale. Has 3 wheels. Have over \$2300 into machine. Runs on propane. Need to sell, make reasonable offer. Have too many projects.

Call for more info at 406-939-1451. Forklift is in Glendive, MT. Weight of forklift is 4500lbs.

**PUBLIC NOTICE**  
**MONTANA SEVENTH JUDICIAL DISTRICT COURT, RICHLAND COUNTY**  
IN THE MATTER OF THE NAME CHANGE OF Steve Sheehan. Cause No. DV-16-36. NOTICE OF HEARING ON NAME CHANGE. This is a notice that Petitioner has asked the District Court for a change of name from Steve Jay Sheehan to Anna Lee Partin. This hearing will be on 5/27/16 at 8:15 a.m. The hearing will be at the Law and Justice Center, Richland County. Dated: 04/26/16. Janice Klempel. Clerk of District Court. By: Yvonne Volkman.

**PUBLIC NOTICE**  
Montana Fish Wildlife & Parks (FWP) has released a draft environmental assessment (EA) for a Shooting Range Development Grant proposal from the Roundup Sportsmen's Association. The Roundup Sportsmen's Association Range is

FWP would provide \$14,590 in funding for Roundup Sportsmen's Association's proposed improvements of installing two wheelchair accessible vault latrines. The Roundup Sportsmen's Association Range is

located approximately two miles northwest of Roundup, Montana, at 83 Golf Course Road; Lat. 46.455852, Long. -108.564025; Section 11, Township 8 North, Range 25 East. For copies of the EA, phone FWP at 406-444-9947 (Helena) or write to FWP, Attn: Wayde Cooperider, PO Box 200701, Helena, MT 59620. For an electronic copy, visit FWP's website at <http://fwp.mt.gov> ("Public Notices"). Comments must be received by FWP no later than 5:00 p.m. on May 27, 2016. Written comments will be accepted on FWP's website, at the address above, or by email to [wacooperider@mt.gov](mailto:wacooperider@mt.gov).

**CARRIERS NEEDED**  
Need extra cash or want to get some exercise while getting paid? We have carrier routes available in most parts of Sidney. 406-433-3306 or fill out application at The Roundup, 111 W. Main, Sidney.

**Wheel Deals**

*Arnegard Auto Sales*

2013 Ford F150 Lariat.....	\$33,000	O.B.O.
2014 Ford F150 STX, Ext Cab.....	\$26,000	O.B.O.
2010 Camero 2SS Auto.....	\$22,500	O.B.O.
2008 VW Beetle .....	\$7,500	O.B.O.
2006 Chevy Impala.....	\$4,500	O.B.O.
2006 Chevy Malibu.....	\$4,000	O.B.O.
1998 Ford F150 4x4.....	\$2,500	O.B.O.

701-586-3552 • Hwy. 85W • Arnegard, ND

Check Us Out Weekly With:

**The Roundup**

Monthly With:

Or Online At:

**Roundup**  
WEB.COM

**The Roundup Classifieds**

Reaching over 11,079 Households in Western North Dakota and Eastern Montana Every Week

(Please Print)

1	2	3	4	5	6
7	8	9	10	11	12
13	14	15	16	17	18
19	20	21	22	23	24
25	26	27	28	29	30
31	\$9.35	32	\$9.45	33	\$9.55
34	\$9.65	35	\$9.75	36	\$9.85 (etc.)

\$9.25 for 30 words or less; 10¢ per additional word  
**Payment Must Accompany Ad**

Number of words \_\_\_\_\_ x Number of Times \_\_\_\_\_ = Cost \$ \_\_\_\_\_

Name \_\_\_\_\_

**Mail To:**  
The Roundup  
PO Box 1207, Sidney, MT 59270

Get Your Roundup, Ag Roundup or Visitor's Guide In Williston at:

- 3 Amigos
- Gramma Sharon's
- Hedderich's
- Kum 'n Go (2 Locations)
- Simonson's

**The Roundup**

111 West Main • Sidney, MT  
406-433-3306 • 1-800-749-3306

Is your Farm & Ranch business Roundup Ready

See Us Today We make good business better!

**The Roundup**

call us at:  
406-433-3306

email us at:  
[email@esidney.com](mailto:email@esidney.com)

MAKE YOUR NEIGHBORS HAPPY!

JOIN OUR CARRIER TEAM

**\$100**

SIGNING BONUS!  
(Distributed over a 5 month period)

**PLUS** COLD WEATHER BONUS DURING THE WINTER MONTHS & PERIODIC RAISES!

**The Roundup**

111 West Main • Sidney, MT | 406-433-3306 • 1-800-749-3306



# The Montana's Outdoor Legacy Foundation Contributes \$5,000

**By Michele Seadeek**  
The Montana's Outdoor Legacy Foundation (MTOLF) contributes \$5,000 to help launch the fundraising efforts for the Gartside Fishing Access Site Enhancement Project through the 2015 Sidney Leadership Class. Development of this project was created and spearheaded by Duane Beiber, Michele Seadeek and Anil Kara with oversight by the Montana Fish, Wildlife and Parks.

Montana gives us open spaces, wildlife, adventure, the opportunity to get away and places where we can re-connect to nature. "Keeping people engaged in outdoor recreation-and helping to ensure that future generations will also be engaged-is the core of our mission" said Jane Ratzlaff, President of Montana's Outdoor Legacy Foundation. "Gartside Fishing Access is a perfect fit for us and we are excited about helping to spearhead this effort. Public access plays a large role in the ability to get into the outdoors and as our state's population expands, that becomes more critical."

The Gartside Reservoir is located within Richland County south of Sidney, MT. The 44 acres of public and leased land has provided recreational options for many years. It offers a wide variety of activities from seasonal game fishing and recreational uses for boating (manual or electric troll only), kayaking and swimming; while the surrounding area is used for hiking, picnicking, and daytrips. Currently there is one official designated recreation area and entrance; however, there is an undeveloped visitor created access road that ends in a turnaround area. Due to its proximity to a grassy marsh, it is a prime place for a kayak entrance and would enhance access for fishing. More picnic areas could be created and improvements made to the current area used for parking and turnaround. In addition, two more picnic areas could be added on the small overlook-one on the upper area and the other on the lower outcrop- with added parking for a maximum of three cars. An informational trail sign about the reservoir could be added at the lower outcropping in the picnic area. These improvements would enhance the opportunity for more families and groups to enjoy this special area. However, it will only be possible if private donors step up to make it happen.

While Montana is truly an outdoor enthusiast's paradise full of prairies, forests, water, cliffs, valleys, wildlife and flora, we have taken for granted that we will be able to walk out our door and enjoy all our state has to offer anytime we choose. Times are changing and we simply must pay more attention to preserving our access points to Montana's amazing outdoors. The memories we make, surrounded by Montana's breathtaking scenery, are priceless. MTOLF invites you to invest in Sidney's newest access point today and help create a space at Gartside for memories waiting to happen!

To donate to this great cause, please contact Michele Seadeek at 620-767-2823 or Kristin Kennedy at the Sidney Chamber at (406) 433-1916 or mail donations to Sidney Chamber at 909 S Central Ave, Sidney, MT 59270.

**Roundup**  
**WEB.COM**

Everything Roundup  
on the web.

# Area Track Action



Cooper McGlothlin competes in the long jump at the Glendive Invitational. (Photo by Kari Jones)



Fairview's Taryn Candee competes in the long jump during the Wolf Point Invitational on Friday. The District 2-C track meet is Wednesday in Sidney. (Photo by Bill Vander Weele)

# Fort Buford Opens Season May 28 With Flag Raising

Submitted by The Historical Society Of North Dakota  
On May 28 Fort Buford State Historic Site begins summer hours and will be open daily from 10 a.m. to 5:30 p.m. Central Time. Opening day will feature the 6th Infantry Regiment Association frontier army re-enactors conducting a Flag Raising Ceremony at 1 p.m. Also on May 28, the Missouri-Yellowstone Confluence Interpretive Center will expand hours to daily from 9 a.m. to 6 p.m.



Jena Baxter hands off the baton to Riley Thiessen in the medley relay. (Photo by Kari Jones)



Carter Johnson vaults to a first place finish at the Middle School Glendive Invitational track meet on Saturday. (Photo by Kari Jones)





**REM**

**The REM GrainVac VR Technology sets a whole new standard in efficiency, speed and durability.**

**VRX Features:**

- 49' standard hose length
- Up to 6,000 bph
- 85 HP requirement

**VR12 Features:**

- 52' standard hose length
- Up to 10,000 bph
- 130 HP requirement



**AGI**  
AG GROWTH INTERNATIONAL  
grainvac.com

**Check our Website: [www.fesmt.com](http://www.fesmt.com)**



**FES FARM EQUIPMENT SALES**

*Serving you since 1964*

**Contact a Sales Professional at any of our 4 locations.**

**In Glasgow see Mike, Wade, Coel or Rob • 54275 HWY 2 East • Glasgow, MT. 59230 • 406-228-2496**

**In Plentywood see Jake • 804 East 1st Ave. Plentywood, MT. 59254 • 406-765-1531**

**In Culbertson see Mike or Luke • 21 West 2nd St. • Culbertson, MT. 59218 • 406-787-6201**

**In Circle see Ole, Mike or Don • Hwy 200 East Circle, MT. 59215 • 406-485-2145**



# Arnie's Motorcycle

\*Offer available on approved purchases of new, unregistered Kawasaki Vulcan® S models made on the Kawasaki Good Times™ Credit Card issued by Capital One, N.A. Offer valid 4/1/16-6/30/16. Your account must be open and current to be eligible for this offer. Subject to credit approval and creditworthiness, an APR of 3.95% with Minimum Payments of 1.57% respective of the purchase price are effective for 72 months or until the purchase is paid in full. Some options may not be available and other terms may apply. The payment may increase due to failure to make Minimum Payments required on statements or due to debt cancellation, late fees, or other fees. The variable Standard APR is 22.24%. Variable APR as of 2/16/16. Minimum Interest Charge \$2.

503 2nd St W • Williston, ND | 701-572-3382



**GOLDEN ANNIVERSARY SALES EVENT**

**SPEND LESS. RIDE MORE.**

**PAYMENTS AS LOW AS \$99/MONTH\* ON VULCAN® S MODELS**

\*With 10% down \$6,299 amount financed, with 3.95% APR for 72 months.

# REBATES UP TO \$2,500 ON SELECT MODELS

# Kawasaki



Lunch Menus

**Sidney School**  
**Thurs., May 12:** Hot ham & cheese, tatertots, fresh fruit, milk.  
**Fri., May 13:** Hot dog, baked beans, celery sticks, applesauce, milk.

**Mon., May. 16:** Chicken nuggets, potatoes w/gravy, steamed broccoli, mandarin oranges, dinner roll, milk.  
**Tues., May. 17:** Spaghetti w/ meat sauce, tossed salad, cheesy bread, fresh fruit, milk.  
**Wed., May. 18:** Super nachos, pears, milk.

**Savage School**  
**Thurs., May 12:** Senior's choice.  
**Fri., May 13:** Hamburgers.  
**Mon., May 16:** Spaghetti wiener casserole.  
**Tues., May. 17:** Turkey hot dish.  
**Wed., May. 18:** Tacos.

**Lambert School**  
**Thurs., May 12:** Chicken fajitas, fresh veggies, cherry cheese-cake, milk.  
**Fri., May 13:** Super potato oles, fresh veggies, caramel roll, milk.  
**Mon., May. 16:** Sweet & sour chicken, rice, stir fry veggies, caramel rolls, milk.  
**Tues., May. 17:** Pizza, chips, fruit, milk.  
**Wed., May. 18:** Chicken patties, smiley fries, corn, pears, milk.

**Froid School**  
**Thurs., May 12:** Spaghetti w/meat sauce, garlic bread, corn, salad bar, fruit, milk.  
**Fri., May 13:** Taco salad, taco bar, refried bans, salad bar, fruit, milk.  
**Mon., May. 16:** Tatertot caserole, buns, salad bar, fruit, milk.  
**Tues., May. 17:** Cook's choice.  
**Wed., May. 18:** Spanish rice, buns, veggies, salad bar, fruit, dessert, milk.

**Bainville School**  
**Thurs., May 12:** Egg salad sandwich, chips, veggies, fruit.  
**Fri., May 13:** Meatloaf, potatoes, fruit.  
**Mon., May. 16:** Cook's choice.  
**Tues., May. 17:** Cook's choice.  
**Wed., May. 19:** Cook's choice.

**Culbertson School**  
**Thurs., May 12:** Cheese raviolis, bread sticks, fruit, milk.  
**Fri., May 13:** Pizza, salad, fruit, milk.  
**Mon., May. 16:** Chicken fried steak dinner, fruit, milk.  
**Tues., May. 17:** Hot dogs, broccoli salad, chips, pineapple, milk.  
**Wed., May. 18:** Chicken legs, potato salad, fruit, milk.

**Richey School**  
**Thurs., May 12:** Chicken strips, vanilla pudding, mixed veggies, apricots, milk.  
**Fri., May 13:** Pork rib sandwiches, fries, fruit cocktail, corn, milk.  
**Mon., May. 16:** Beef strips, mixed veggies, pineapple upside down cake, milk.  
**Tues., May. 17:** Hot ham & cheese, peas, fruit cocktail, milk.  
**Wed., May. 18:** Chicken drummies, green beans, applecrisp, milk.

**Fairview School**  
**Thurs., May 12:** Pork enchilada, corn, mandarin oranges, milk.  
**Fri., May 13:** No school.  
**Mon., May. 16:** Philly cheese sloppy joes, potatoes, apple-sauce, milk.  
**Tues., May. 17:** Chicken enchilada casserole,peas, peaches, milk.  
**Wed., May. 18:** Spaghetti, bread, green beans, pineapple, milk.

**Rau School**  
**Thurs., May 12:** Breakfast for lunch.  
**Fri., May 13:** Tuna or turkey sandwich, chips, pickles, fruit.  
**Mon., May. 16:** Cook's choice.  
**Tues., May. 17:** Cook's choice.  
**Wed., May. 18:** Cook's choice.

**Watford City High School**  
**Thurs., May 12:** Crisпитos, rice, refried beans or black beans.  
**Fri., May 13:** Pizza, corn, dessert.  
**Mon., May. 16:** Chicken sandwich, pickles, french fries.  
**Tues., May. 17:** Grilled cheese, tomato soup, crackers, fresh veggies.  
**Wed., May. 18:** Cook's choice.

**Medicine Lake**  
**Thurs., May 12:** Quesadillas, potato wedges, salad, pineapple, dessert.  
**Fri., May 13:** Chicken alfredo, peas & carrots, bread sticks, pears.  
**Mon., May. 16:** Sliders, puff potatoes, mandarin oranges, brownies.  
**Tues., May. 17:** Taco in a bag, salad, strawberries, brownies.  
**Wed., May. 18:** Chicken a la biscuit, salad, jello, peaches.

Drivers Urged To Be Alert For Motorcycles

**Submitted by MNA**  
Helena – In a year when motorcycle-riding season began as much as six weeks early, safety officials are concerned about a possible spike in rider deaths. In the last ten years in Montana, 283 motorcyclists have died and more than 1,500 have been seriously injured in motorcycle crashes. Most crashes occur during the five-month peak period of May through September.

Because it's the start of prime riding season, May is Motorcycle Safety Awareness Month. Motorists are being reminded to watch out for motorcycles and share the road safely.

In three out of four crashes between a motorcycle and a motor vehicle, the motorcycle collision is frontal, according to facts from the National Highway Traffic Safety Administration (NHTSA). The majority of these crashes occur because the driver of the motor vehicle pulled in front of the motorcyclist.

"Of all the vehicles in the roadway, motorcycles are among the most vulnerable. Motorcycles are smaller, so they are harder to see. Their relative size also makes it more difficult to judge their speed accurately," says Jim Morrow, director of Montana Motorcycle Rider Safety (MMRS). "Look twice and actively search the lanes and intersections ahead and behind for an approaching motorcycle. Use your mirrors and signals before you enter traffic

or change lanes," Morrow recommends.

Motorcycles are not only less visible than cars; they are also less stable and often have high performance capabilities. A motorcycle crash is much more likely to result in serious injury or death. NHTSA reports that per mile traveled in 2013, the number of deaths on motorcycles was over 26 times the number in cars.

While motorists need to be alert for motorcycles, motorcyclists also have a responsibility to keep themselves safe, according to Morrow. "They can learn defensive riding and maneuvering skills and make sure they have the right protective gear," says Morrow.

The Montana Department of Transportation and the Mon-

tana Motorcycle Rider Safety Program offer the following advice for drivers and riders to share the road safely. Prevention of motorcycle crashes is critical to reaching Vision Zero, zero deaths and zero serious injuries on Montana roads.

Tips for drivers

Respect all other vehicles on the road, keep your full attention on driving and avoid distractions, allow a motorcyclist the full lane width—never try to share a lane, perform a visual check for motorcycles by checking mirrors and blind spots at intersections and before entering or exiting a lane of traffic, and always signal your intentions before changing lanes or merging with traffic, allow more following distance behind a motor-

cycle so the motorcyclist has enough time to maneuver or stop in an emergency.

Tips for motorcycle riders

Take a motorcycle safety course (<http://motorcycle.msun.edu>), wear brightly colored or reflective protective gear, wear a DOT-compliant helmet, strategically use your lane position to see and be seen, stay alert—and slow down when approaching left turns or intersections in anticipation of other drivers' actions, use signals in advance when changing lanes or turning, never ride impaired, observe speed limits—a third of nationwide motorcycle fatalities in 2013 were speeding.

MNAXLP

# ALL REMAINING 2015 SILVERADO AND SIERRA 1500'S



## Reg Cab, Double Cab, Crew Cab

# 20% OFF MSRP

## Savings Up To \$12,000

30 To Choose From

### Lease Special

## 2015 Silverado 1500 Crew Cab 4WD

# \$399 A Month

15,000 miles a year,  
\$2,500 Cash Down  
Or Trade Equity, OAC

### All Remaining 2015 Vehicles At Blow Out Prices

## Over 20 HD's Must Go

# Huge Savings



**CHEVROLET** **GMC** **GMC BUSINESS ELITE**

**SEE THESE SALES CONSULTANTS FOR QUALITY CAR BUYS!**

 Pat Murphy Dealer	 Wayne Rodvold General Manager	 Rick Moe Sales Manager	 Kelly Blomberg Fleet Manager	 Anthony Thompson Business Manager	 Colt Treffry Social Media Consultant	 Dusty Falcon Credit Dr.
 Greg Bowles Sales	 Thomas Graham Sales	 Tim Sorensen Sales	 Lori Christopherson Sales	 Cori Fenske Sales	 Jimmy Ramirez Sales	 Miguel Quezada Sales

*Se Habla Español*

**BAD CREDIT NO CREDIT NO PROBLEM**

**APPLY NOW!**

Call Dusty Falcon Today  
[www.NDCreditDr.com](http://www.NDCreditDr.com)



**SEE THESE SALES CONSULTANTS FOR QUALITY CAR BUYS!**

1801 2nd Ave. W. Williston, ND CALL 1-800-888-2927 or 701-577-2927 • Hours: MON.-FRI. 8am to 6pm; SAT. 9am-5pm

[www.murphymotors.com](http://www.murphymotors.com)



# Sidney, Fairview ‘E-Rase Your E-Waste’ Event Is May 13-14

By Beth Redlin

E-raise your E-waste organizers invite you to bring your damaged and outdated electronic equipment to the group’s spring recycling event May 13-14 in Sidney and Fairview. Now in its 12th year, E-raise your E-waste has recycled more than 380,000 pounds (190 Tons!) of electronic waste and is hoping to add substantially to that total in 2016, organizers said.

This spring’s collection will once again be held Friday and Saturday, May 13-14, in Sidney, while Fairview will hold its own mini collection event on Saturday morning, May 14, as part of that community’s annual Citywide Cleanup event.

Yellowstone E-waste Solutions of Billings is again the e-cycler for the event and provides their services for FREE, with a couple of exceptions. Participants wanting their hard drives removed from their computers or needing documentation certifying that their hard drive has been destroyed will need to pay a small fee of \$5 for each of those services. In addition, there is a fee for recycling CRT monitors and CRT television sets based on size: \$5 each for CRT TVs and monitors 19” or smaller; and \$10 each for anything larger.

## Sidney Collection

The Sidney E-raise your E-waste collection will be held as usual at the Richland County Shop at 2140 W. Holly in Sidney, next to the Fairgrounds. Signs will be posted. Times for the Sidney event are Friday 3-7 p.m. and Sat. 9 a.m. -3 p.m. Please note, the county shop is available for drop offs during event times ONLY, when Yellowstone E-waste Solutions employees and local volunteers will be available to help with loading and unloading.

Note, too, that anyone in the MonDak region, or even outside it, is welcome to bring their electronic items to the Sidney E-raise

your E-waste collection site during regular event hours. You do not need to be a Sidney or a Richland County resident to participate.

## Fairview Collection

In Fairview, items will be accepted at the Fairview Fire Hall from 8 a.m. to noon on Saturday, May 14, Fairview chamber organizers said. Note, that NO items, either regular trash or e-waste, will be accepted after the 12 pm deadline in Fairview; however, Fairview senior citizens and others needing help transporting their e-waste to the Fairview event can call City Hall (through Friday May 13) at 742-5616 to arrange assistance. On Saturday, those needing help in Fairview can call 489-2624.

## What Can I Bring?

Nearly all electronic devices are accepted, including computers and their components (printers, scanners, keyboards, etc.), cell phones, cameras, TVs, VCRs, cable TV boxes, fax machines, copiers, stereos, game boys and specialized electronic equipment used in businesses such as hospitals, law enforcement, manufacturing and even the oil field.

Please note, however, that NO consumer white goods, light bulbs, CFLs, mercury thermometers, alkaline batteries, or items containing refrigerants (including dehumidifiers), oils, or acids will be accepted. If you are unsure whether your item qualifies you can check out the handy “What to Bring...” handout posted on the USDA-ARS Northern Plains Agricultural Research Lab’s e-waste website at [www.ars.usda.gov/npa/npa/ewaste](http://www.ars.usda.gov/npa/npa/ewaste) or call Jackie Couture at 406-433-9422. In addition, a handy “Items List” recycling form is also available

at the website to further speed processing time for participants bringing both large and small amounts.

## Recycling Large Amounts

Local businesses, agencies and organizations with large amounts to e-cycle are asked to make an appointment to drop off their items by calling Jackie Couture at 406-433-9422. Please leave a message.

Where possible larger recyclers are also encouraged to palletize their own items, or send extra staff to help get it done. Details on acceptable items and how to palletize them can be found in the “What to Bring...” handout posted to the USDA-ARS Northern Plains Agricultural Research Lab’s e-waste website noted above.

## Fall Collection Also Planned

For those unable to participate in this weekend’s events, E-raise your E-waste is also hosting a second collection this fall (in Sidney only) the weekend of Sept. 9-10. Please consider joining us then.

The “E-raise your E-waste” effort in Sidney is coordinated by members of the Richland County Local Emergency Planning Committee (LEPC), and volunteers with other community organizations including the RSVP program. The Montana Department of Environmental Quality has also committed funds for advertising the 2016 events and the Richland County Public Works Department makes their facilities freely available for the collection event in Sidney.

MNAXLP

# USDA Offers New Loans For Portable Farm Storage And Handling Equipment

Submitted by Dan Janes

U.S. Department of Agriculture (USDA) will provide a new financing option to help farmers purchase portable storage and handling equipment. Farm Service Agency (FSA) Administrator Val Dolcini and Agricultural Marketing Service (AMS) Administrator Elanor Starmer announced changes to the Farm Storage Facility Loan (FSFL) program today during a local and regional food roundtable in Columbus, Ohio. The loans, which now include a smaller microloan option with lower down payments, are designed to help producers, including new, small and mid-sized producers, grow their businesses and markets. “As more communities reconnect with agriculture, consumer demand is increasing for food produced locally or regionally,” said Dolcini. “Portable handling and storage equipment is vital to helping farmers get their products to market more quickly and better maintain product quality, bringing them greater returns. That’s why we’ve added this type of equipment as a new category for our Farm Storage Facility Loan program.”

The program also offers a new “microloan” option, which allows applicants seeking less than \$50,000 to qualify for a reduced down payment of five percent and no requirement to provide three years of production history. Farms and ranches of all sizes are eligible. The microloan option is expected to be of particular benefit to smaller

farms and ranches, and specially crop producers who may not have access to commercial storage or on-farm storage after harvest. These producers can invest in equipment like conveyers, scales or refrigeration units and trucks that can store commodities before delivering them to markets. Producers do not need to demonstrate the lack of commercial credit availability to apply.

“Growing high-value crops for local and regional markets is a common entry point for new farmers,” said Starmer. “Since they often rent land and have to transport perishable commodities, a loan that can cover mobile coolers or even refrigerated trucks fills an important gap. These producers in turn supply the growing number of food hubs, farmers markets or stores and restaurants interested in sourcing local food.”

Earlier this year, FSA significantly expanded the list of commodities eligible for Farm Storage Facility Loan. Eligible commodities now include aquaculture; floriculture; fruits (including nuts) and vegetables; corn, grain sorghum, rice, oilseeds, oats, wheat, triticale, spelt, buckwheat, lentils, chickpeas, dry peas sugar, peanuts, barley, rye, hay, honey, hops, maple sap, unprocessed meat and poultry, eggs, milk, cheese, butter, yogurt and renewable biomass. FSFL microloans can also be used to finance wash and pack equipment used post-harvest, before a commodity is placed

in cold storage.

AMS helps thousands of agricultural food producers and businesses enhance their marketing efforts through a combination of research, technical services and grants. The agency works to improve marketing opportunities for U.S. growers and producers, including those involved in specialty crop production and in the local and regional food systems. Visit [www.ams.usda.gov](http://www.ams.usda.gov) to learn more about AMS services.

Today’s announcement will further advance the efforts of USDA’s Know Your Farmer, Know Your Food initiative, which coordinates the Department’s work to develop local and regional food systems. USDA is committed to helping farmers, ranchers, and businesses access the growing market for local and regional foods, which was valued at \$12 billion in 2014 according to industry estimates. Under this Administration, USDA has invested more than \$1 billion in more than 40,000 local and regional food businesses and infrastructure projects. More information on how USDA investments are connecting producers with consumers and expanding rural economic opportunities is available in Chapter IV of USDA Results on Medium.

To learn more about Farm Storage Facility Loans, visit [www.fsa.usda.gov/pricesupport](http://www.fsa.usda.gov/pricesupport) or contact a local FSA county office. To find your local FSA county office, visit <http://offices.usda.gov>.

# Save Time & Money With Great Communication!



**Handhelds**  
*TK-2402*  
 Handheld 5 watts w/scan  
**\$289**

**Mobile Radios**  
 50 to 110 watts •  
 16 to 127 channels •  
 small & easy to use •



*Starting at \$359.00*

**ADVANCED COMMUNICATIONS**  
*“Your communication headquarters”*  
**Mobile Radios • Satellite Telephones**  
**Just North of McDonald’s • Sidney, MT | 406-433-1659 • Toll Free: 1-866-433-1659**



Attention All Ranchers,  
**BRANDING SEASON IS HERE!**

Helena Chemical Company, in Watford City, has all of your supplies to get the job done. From pinkeye vaccines, 7-ways, 5-ways, needles, syringes, implants & more, we have it all!

We are also offering an intranasal administration of Inforce 3 which protects against IBR, PI3 & prevents respiratory disease caused by BRSV.

***Call ahead ordering is recommended to ensure availability.***

Don’t forget about pre-breeding vaccines & broad-spectrum parasiticides before pasture turnout.

We also have a 3-year rotational insecticide tag program that would work well on your operation to help aid in fly control.

**HELENA CHEMICAL**

**OFFICE: 701-444-3772**  
**BLAKE’S CELL: 701-770-4105**

**THE BUSINESS ROUNDUP**  
 REACH **26,500** READERS IN THE ENTIRE MONDAK REGION  
**406-433-3306 OR 800-749-3306 ~ INFO@ROUNDUPWEB.COM**  
 GO TO [WWW.ROUNDUPWEB/DIRECTORY](http://WWW.ROUNDUPWEB/DIRECTORY) FOR DIRECT LINKS TO COMPANY WEBSITES & LOCATIONS

**\$25<sup>00</sup>/WK**

**BIG SKY Surveying, PC.**  
*Joseph L. Kauffman, 12211 PLS*

- Subdivisions
- Land Use Consulting
- Topographic Survey
- Family Transfers
- Boundary Adjustments

- Construction Surveying
- Environmental Consulting
- F.E.M.A. Flood Plain Mapping



PO Box 170 • Sidney, MT 59270 | 406-488-9452 • 406-250-9452 | 215 S Central Ave • Sidney, MT

**HOSE ASSEMBLIES WHILE YOU WAIT**  


**Fluid Connectors • Industrial Hose • Seals**  
**Hydraulics • Pneumatics • Automation**  
**Filtration • Racor • Instrumentation**



**406.433.1590**  
After Hours 406-478-3116  
**406-433-1589**

**SIDNEY, MT**  
**205 2nd Ave NE**  
WWW.MFCPINC.COM



**Portables & Septic Service, LLC**  
**Blaine Rogers, Owner**

Office: (406) 433-7586  
Fax: (406) 433-7586  
PO Box 1003  
Sidney, MT 59270  
Service: (406) 489-6915

www.doorbustnportablessepticsservice.com

**For all your Farm/Ranch, Recreational, Residential, and Commercial needs.**



**Alan Seigfreid**  
**Amanda Seigfreid**

**Jim & Janice Knudsen**  
**Broker/Owners**

**120 2nd St. N.E. • Sidney Mt. 59270**  
**(O) 406-433-3010 • (C) 406-489-3010**  
email: [alans@midrivers.com](mailto:alans@midrivers.com)  
**Website: [www.missouririverrealty.com](http://www.missouririverrealty.com)**

**Customer Service is Our #1 Priority**



**Farm & Ranch Products & Construction Materials. New Steel, Aluminum & Stainless.**

**Brady Smelser • Tim Mulholland • Kelly Moody • Bret Smelser • Ernie Gawryluk**

Sidney  
35002 CR 123  
406-433-7737  
1-855-810-2995

Glendive  
2703 W. Towne St.  
1-800-423-5219

Williston  
13896 W. Front St.  
1-800-820-5493

Plentywood  
Hwy 16 East  
406-765-2624



**TRUCK ROUTE SOUTH, SIDNEY**  
**OR CONTACT ONE OF OUR AGENTS:**

JUSTIN JONES  
406-480-9525

DENNIS WICK  
406-480-1550

JERRAN FRANZEN  
406-478-3773

KRISTIN LARSON  
406-480-5139  
HOME: 798-3115

**WWW.NICKJONESRE.COM**

**MARTINI STEEL & SEAMLESS RAIN HANDLING**  
**Serving The Region For 50 Years!**

- Seamless Rain Gutters
- Siding & Roofing
- Soffit & Fascia
- Maintenance-Free Decks



**Office: 406-798-3828 • Tom: 406-480-9078 • Dan: 406-291-0437**



**Oil Field & Industrial Construction**

2265 S. Central Ave.  
Sidney, MT 59270  
Email: [les@slservices.net](mailto:les@slservices.net)  
Phone: 406.433.6754  
Fax: 406.433.6755



**www.slserviceinc.com**



**FR CLOTHING & EMBROIDERY**

Office: 406-433-6757  
Fax: 406-433-6755  
Mon-Fri: 8am - 6pm  
Closed: Sat & Sun  
2221 S. Central Avenue  
Sidney, MT 59270

**YOUR COMPANY HERE**

**ASPHALT • CHIP SEAL • SEAL COAT • CRACK SEAL • SLURRY SEAL TYPE I - II - III**  
**WWW.HARDRIVES-ASPHALT.COM**



James Bailey  
Sales Representative  
[jamesbailey@hardrives-asphalt.com](mailto:jamesbailey@hardrives-asphalt.com)

Office • 406.245.3128  
Cell • 406.672.8268  
Fax • 406.245.8834  
Office • 4800 Hellfrick Road  
PO Box 2535 • Billings, MT 59103

**Brandon Ensrud**  
*Master Electrician | Electrical Supervisor*

Electrical Division  
Electrical Contractor & Supplier  
Licensed in MT & ND

**Toll Free: 1-877-488-8066**  
**Office: 1-406-488-8066**  
**Fax: 1-406-488-8067**



**1775 S CENTRAL AVE • SIDNEY, MT 59270 | [WWW.AGRIINDUSTRIES.COM](http://WWW.AGRIINDUSTRIES.COM)**



**Submitted by Jessie  
Veeder Scofield**

Watford City's Long X Council on the Arts is pleased to present the Badlands Arts Showcase and Fundraising Gala on Thursday, May 26. Guests will enjoy an evening of original western North Dakota dance and music performances, art, coffee, dessert and hors d'oeuvres for purchase as part of one of the first events held in the beautiful new theater space in the new Watford City High School.

"Part of the mission of the Long X Council on the Arts is to celebrate Western North Dakota artists and provide the community access to the arts," said chairman Jan Dodge. "This goal of this event is to fulfill that mission and to raise funds so we can continue to do so for years to come."

The evening will begin at 5:30 when the doors open to the art show and silent auction featuring photography,

painting, pottery, jewelry and more from local and regional artists. Each artist has donated a piece to the silent auction to benefit the Long X Arts Council and many artists will have their work for sale as well.

Desserts, coffee and punch will be available while guests browse and additional hors d'oeuvres and sweets will be available for purchase as well.

At 7:00 doors will open to the performance showcase featuring Scandinavian music and dance by Minot's prestigious Rinat Mousafarov Institute of Dance, winners of North Dakota's Favorite Blues Band Award, Whiskey Rebellion, North Dakota's Favorite Folk Artist winner Jessie Veeder, nationally renowned cowboy poet and musician DW Grothe, yodeling sensation Kristi Goldade, as well as performances by Watford City's Meadowlark Dance Students and Watford City High School

Choir Students and other local favorites.

"The theater space itself is a sight to see," said committee member, organizer and performer Jessie Veeder. "Including the space in the design of the new school proves this community's commitment to the arts. I am so proud to be a part of this event and I think people will be blown away at the facility and the talent we have right here in our backyard."

Tickets are \$15 in advance and \$20 at the door. Tickets will be available for sale at the Long X Visitors Center and other area businesses as well as online at [www.longxarts.com](http://www.longxarts.com)

The Long X Council on the Arts is seeking sponsorships and donations. Find out how you can help support area arts and learn more about the lineup of artists and performers at [www.longxarts.com](http://www.longxarts.com).

MNAXLP

## A collection of various wind instruments, including flutes, recorders, and pan flutes, displayed on a table under a glass roof. The instruments are arranged in a row, with some standing upright and others lying down. The background shows a glass and metal structure, possibly a conservatory or a museum display case.



**145 Main • Watford City, ND • 701-842-3311**



## May 8-14, 2016

