

The Roundup

PRSRT STD
U.S.
POSTAGE
PAID
The Roundup

(406) 433-3306 or 1-800-749-3306
Fax (406) 433-4114
e-mail address:
info@roundupweb.com
www.roundupweb.com

Business Office:
Located at 111 West Main
Sidney, MT

Mailing Address:
P.O. Box 1207
Sidney, MT 59270

PRSRT STD
ECRWSS
U.S. POSTAGE
PAID
EDDM RETAIL

Local
Postal Customer

Wednesday, June 24, 2015

Volume 41 • Number 19

Super Valu In Fairview Is Under New Ownership

By Meagan Dotson

On April 30, 2015, Fairview native Tim Neu officially became the owner of the Super Valu grocery store in Fairview, MT. Neu had been a business owner in Florida, where he had lived for fifteen years before moving back to his home town in 2009 and working with his brother, owner of Neu Construction.

"I enjoyed having my own business and the store had been for sale for about a year. A grocery store is something that every town needs and there is a lot of potential for growth," he said about his decision to purchase the store. "There are approximately 1,000 mailboxes in the Fairview area and if the average household has three people, then you definitely have an area with a need for a grocery store."

New check-out lanes, scanners, and a point of sale system will be in place the week of June 22nd and the community is invited to stop in during their Customer Appreciation Days leading up to Old Timer's Festival, July 18th. Beginning Monday, July 13th, there will be a week-long outdoor produce sale. Stop in and enjoy a cup of complimentary coffee and cookies made in their full-service bakery.

Upcoming plans for the landmark building include new coolers, produce and meat cases, and the addition of a deli with a grab-and-go section to include pre-made sandwiches and wraps as well as some hot food options such as rotisserie chicken.

Neu is pleased to maintain the same great staff including Store Manager Pam Hoover. Hoover has worked at Super Value for 15 years and makes all the bakery items daily.

Renovations to the nearly 100 year old building will be complete this fall; the landmark building was originally a coal and lumber yard.

Super Valu is located at 303 S Ellery Ave in downtown Fairview. The store is open Monday through Saturday from 6:00 am until 8:00 pm and from 9:00 am until 5:00 pm on Sundays. To place an order with the bakery or for further information, call 406-742-5441.

Owner, Tim Neu & Store Manager, Pam Hoover



Oilfield Water Treatment Specialist To Speak At Froid Field Day Thursday

By Beth Redlin, USDA/ARS

A new speaker has been added to the Froid Research Farm Field Day roster for Thursday, June 25th. Dr. Rex Crick, Chief Operating Officer with Sionix Corporation and President of Sionix Oil-

field Solutions (SOS), will be speaking about SOS's new oilfield water reclamation operation in Culbertson.

The company purchased the former Montola oilseed crushing facility in Culbertson last summer and is building a new operation at the 45-acre site to treat, reclaim and market production and flowback water from crude oil production and fracking operations in the Bakken. The reclamation of oil field brines to a quality allowing reuse in the oilfield is not only a cost saver for oil companies, but also ensures preservation of an equivalent amount of freshwater from area aquifers for other uses, according to Dr. Crick. The process also negates the need for permanent disposal of that oilfield production water into deep saltwater disposal wells.

Dr. Crick will share information on SOS (<http://www.sionixsos.com>) and the progress of the Sionix facility at Culbertson during the evening meal portion of the Field Day program, which is set to begin at 5 pm at the farmsite.

The Froid Research Farm Field Day is Thursday, June 25th beginning at 1 pm. The farmsite is located 8 miles

north of Culbertson on Highway 16. The event is sponsored annually by the Roosevelt and Sheridan County Conservation Districts and Extension Offices and the USDA-ARS Northern Plains Agricultural Research Laboratory in Sidney, MT.

Other topics to be presented at this year's tour include information on wheat stem sawfly management, biological control of Canada thistle, pea leaf weevil management, overview of a new Extension on-farm energy audit program; a fallow replacement study incorporating oilseeds and a cover crop mix, along with information on another cover crop mix study looking at seeding depth and starter fertilizer, and more!

Two special workshops are also planned and include a "Drones 101 Workshop" for learning the basics of Unmanned Aerial Systems, and a demonstration by NRCS officials of an eye-opening rainfall simulator." Everyone is welcome. The tour and the meal are free.

For more information call or email Beth Redlin at 406-433-9427 or beth.redlin@ars.usda.gov.

Watford City HOMEFEST 2015 June 26 – 28



By Tie Shank

FRIDAY: The Watford City annual Homefest kicks off on Friday, June 26th with an all-day Art Show at the Long X Visitor Center, followed by the Trish Gravos Memorial Golf Scramble at Fox Hills Golf Course at 3:00 p.m.

Scranton, ND native and a contestant on season 6 of The Voice, Kat Perkins will be wrapping up the first night of Homefest with a free performance on Main Street beginning at 6:00 p.m.

SATURDAY: The Art Show will continue and run throughout the day at the Long X Visitor Center, while Food and Craft vendors and the Kids Zone fill the Main Street.

The Parade of Homes will begin at the Long X Visitor Center

at 9:00 a.m. and run through 5:00 p.m. The award presentation will take place at 7:45 p.m.

Be sure to watch the Baby Pageant at Noon on Main Street, followed by the StarKids Pageant at 2:00 p.m.

North Dakota native, Jessie Veeder & Outlaw Sippin' will perform for the Street Dance on Main Street at 8:00 p.m.

SUNDAY: The final day of Homefest begins with a Scandinavian Coffee Social at the First Lutheran Church at 8:45 a.m., followed by the First Lutheran Church Dedication at 9:30 a.m., and Lutheran Mass at 10:00 a.m. Lunch will willow Mass under the tent with music and a program.

Art Classes at Sunrise Festival of the Arts July 11

By Kim Simmonds, Exuctive Director MonDak Heritage Center

New this year to the Sunrise Festival of the Arts on July 11, 2015: Art classes!

Artist Peggy Kopp will be teaching Zentangle at 9:30am. Artist Jenny Baker will be teaching a watercolor class at 11:00am. The classes will take place in the covered shelter near the train in Veteran's Memorial Park and cost \$20 per person. Each class will last one hour, all supplies are included, and each registrant will take home a finished work of art.

Space is limited, so please call the Sidney Chamber of Commerce and Agriculture at 406-433-1916 to reserve your spot.

For more info, visit <http://www.sidneymt.com/> or call 406-433-1916.

MNAXLP



What's Your Next Big Dream...
REMODELING YOUR HOME, TAKING
A VACATION, BUYING A NEW CAR?

Make it a reality with a home equity line of credit.



Pam Burman
AVP, Consumer Loan Department Manager
NMLS ID# 523498
Stockman Bank
MONTANA BANKING. PURE & SIMPLE.™
For all your consumer lending needs,
call Pam today!
Sidney: 433-8600

© 2015 Stockman Bank | Member FDIC

Consult a tax advisor regarding the deductibility of interest. Subject of credit approval. Property insurance required.

WWW.STOCKMANBANK.COM



Mayor Norby Newest Sidney Kiwanis Member

The Sidney Kiwanis Club welcomed its newest member, Sidney Mayor Rick Norby, last Thursday, sponsored by Tami Christensen. Norby joined just in time to help with the Kiwanis Pie Social which will be held on Friday, July 10 on the courthouse lawn.

PARTY CENTRAL & Main Street POPCORN FACTORY

SUN & MON: CLOSED • TUES-FRI: 10AM - 5:30PM • SAT: 9AM - 4PM
105 East Main Street • Sidney, MT | 406-433-4FUN | www.partycentralandgifts.com

PATRIOTIC SUPPLIES!

DECORATING KITS
WEARABLES & HATS
PARADE ITEMS
PIN WHEELS & LIGHTS
FUN NOVELTY FUN! ON SALE NOW!

Roundup WEB.COM

**HOPE TO SEE YOU AT THE
McKenzie County Fair**
"Summer Time Fun For Everyone"
Thursday – Saturday, July 9 – 11, 2015
Watford City, ND

Entertainment Highlights

Carnival
Thursday – Saturday, July 9 – 10 – 11

Curly's Fantastic Kid Zone
Thursday – Saturday, July 9 – 10 – 11

Free Beef Barbecue
Thursday, July 9

Olaf Leiseth Jr. Memorial Draft Horse Competition
Thursday, July 9

Demolition Derby
Friday, July 10

NDRA Rodeo
Youth & Lil' Buckaroo Rodeos
Saturday, July 11

Animal Specialties
Thursday – Saturday, July 9 – 10 – 11

Matt Sorenson • Spray Paint Artist
Thursday – Saturday, July 9 – 10 – 11

Strolling Magician
Thursday – Saturday, July 9 – 10 – 11

If you have any questions, contact:
Carolyn Levang
10293 Hwy. 73
Keene, ND 58847
E-mail: levang4@ruggedwest.com
701-675-2306 (H)
Cell 770-6938 (C)

Youth Rodeo Entries, contact:
Eva Hepper
701-675-2016 (H)
701-898-9801 (C)
Entries online:
hepper@ruggedwest.com

General Admission
• \$5.00 Button – Good for all 3 days

Demolition Derby
• \$10 Adult, \$5 Ages 6-13, Under 6 Free

NDRA Rodeo
• \$10 Adult, \$5 Ages 6-13, Under 6 Free

Stop In During Homefest!



**WE'RE MORE THAN
JUST A DRUG STORE**

MT West & Other Purses • Scarves • Luggage
Jewelry • Russel Stover Chocolates
Woodwick, Ribbon Wick & Bridgewater Candles
Kitchen Items • Fragrances
National Brand Gift Cards • Man Cave Decoere

**Barrett Pharmacy
& Variety** 701-842-3311
145 Main • Watford City, ND
Mon - Fri: 9am - 6pm
Sat: 9am - 5pm

« PROFESSIONAL BULL RIDERS »

Eastern Montana's
BULL BLOWOUT

June 26-27, 2015
Sidney, MT
7:30 pm
Richland Co. Fairgrounds

TOURING PRO DIVISION

Advanced tickets:
HIGH CALIBER SPORTS,
TRIFECTA HOME CENTER,
SIDNEY CHAMBER,
SADDLE-UP: SIDNEY, MT
& WATFORD CITY, ND
\$15 ~ adults
\$10 Kids ~ 12 & under
Door price: \$20 and \$10

Kids
12 & under
FREE on
Friday!

Concessions
&
Beer
Gardens

For more information call
701-400-4534
Not Responsible for Accidents!

Stock provided by:
Bailey Pro Rodeo,
C/N Stars Bull Co./Fladeland Bucking Bulls,
Mosbrucker Rodeo, F & T Rodeo,
and other top contractors

Corporate Sponsors

Chute Gate Sponsors

W-FMX Sponsors

TRY OUR NEW



SIRLOIN BURGERS!

LETTUCE & TOMATO • BACON & CHEESE • STEAKHOUSE

ASIAN SALAD

IT'S BACK!





Open at 7am | 406-433-1983

1550 S Central • Sidney, MT

Congratulations
Kerry Meissner!
You Are Our
June Employee
Of The Month!



NASA Clears Launch Of RMC Experiment For The International Space Station



Photo credit courtesy of Melissa Holmes:RMC students Ayla Grandpre (left) and Erin Burns (right) demonstrate the NanoLab

Submitted by Jenny McPhail, Director of Marketing, Communications and Public Relations Rocky Mountain College

BILLINGS – NASA has granted clearance for RMC’s AGAR (Algae Growth And Remediation) experiment to be launched on the Space X7, Falcon 9, Dragon X rocket on June 28, 2015. Falcon 9 will launch from Cape Canaveral, Fla., and rendezvous with the International Space Station (ISS) to deliver and return cargo for NASA.

This payload to ISS will include RMC’s AGAR project, which began three years ago as part of NASA’s HUNCH (High School Students United with NASA to Create Hardware) initiative to inspire young science students to develop novel ideas and experiments for space exploration.

The student project began under the guidance of Dr. Deb Wines, a biology teacher at Billings Central Catholic High School, and Dr. Florence Gold, a NASA HUNCH Implementation Project Manager/Management POC for Fabrication Schools. The premise behind the student-led experiment was to test the growth of algae in zero gravity.

“What makes this experiment so unique is that this is the first time that growing algae in a solid media will have ever been done in zero gravity,” said Dr. Gold. She described how the AGAR experiment consists of growing algae in agar, a nutrient-rich gel commonly found in petri dishes. Dr. Gold explained that because algae converts carbon dioxide to oxygen there may be a significant benefit to developing ways to produce oxygen in space stations.

“Why is it so valuable? It’s about algae, which has a lot of wonderful uses – remediation of carbon dioxide into oxygen, as a food, and as a source of fuel. Can it grow well in microgravity? If it does, we can apply it to all of these uses.”

“We are placing algae in agar and seeing if it will grow in zero gravity,” explained Ayla Grandpre, one of the students working on the project. “To further this experiment, if it works, we hope to see if fruit flies can survive off the oxygen that the algae produces from the flies’ carbon dioxide.”

During a science research symposium in 2012, the project was one of the few selected to go to the ISS. However, the students had to develop a way for the experiment to be autonomous. That was when RMC’s Associate Professor of Computer Science Dr. Andy Wildenberg began working with the team.

“Because space scientists cannot interact with the hundreds of experiments on the ISS, it was critical to develop an experiment that can run untouched and be monitored from an orbit 220 miles above Earth,” said Dr. Wildenberg. For more than two years, Dr. Wildenberg and students, including RMC students, have worked on implementing the necessary biological research and designing the experimental chamber. To help fund the project, The Center for the Advancement of Science in Space (CASIS) awarded the students with a \$30,000 sponsorship to cover the cost of the launch to the ISS.

“This team has been great to work with these past two years,” said Kobi Hudson, one of the RMC students working on the project. Hudson was the recipient of the prestigious William A. Hiscock Memorial Award from the Montana Space Grant Consortium (MSGC) in 2014 for his design of the test structure (NanoRacks NanoLabs enclosure) that houses the experiment to test the growth of algae in zero gravity.

The NanoLabs enclosure will contain three jars that contain agar. Dr. Wildenberg explained, “Agar is basically jello, but algae can grow in it. NASA likes that because liquids in space are lousy. And NASA cares about growing algae because they spend a lot of money shipping oxygen up to the space station since they can’t convert carbon dioxide (CO2) to oxygen (O2). We hope that if the algae grows up there like it does down here, then it can be made into a unit that converts CO2 to O2.”

Through the AGAR experiment, algae will be grown inside a modularized aluminum box (NanoLabs enclosure), which is a 1-kilogram, 4-by-4-by-6 inch box. The box contains three small plastic jars containing the algae, a temperature sensor, grow lights, a camera, and a memory card to record data.

“I hope that we achieve a minimum goal of the documented growth of algae in AGAR in microgravity,” said Hudson. “I know we all look forward to seeing the first downlink of data. All of our hard work will be well represented in the data we receive. I am excited to keep moving forward with this project and I hope the data gives us a good starting point for the next phase in our mission to examine and perfect the growth of algae in AGAR in microgravity.”

The AGAR experiment will be on the ISS for approximately 30 days, during which time, photos of the algae growth and temperature readings will be recorded and monitored from the computer science lab at Rocky Mountain College. After a month on the ISS, the AGAR project will be “deorbited” – none of the experiment will be salvaged.

Dr. Wildenberg, Dr. Gold, and a number of the student-led team plan to attend the launch at Cape Canaveral, which will include a technical briefing and scientific discussion prior to the launch.

ONLY 3 LEFT!

GET YOUR CLOSEOUT DEAL TODAY!

2014 Closeout Sale

0% financing is available on select units. Check with sales staff on all rebate possibilities.



ST# 1149



ST# 3225



ST# 3285

ST#	VEHICLE	MAX REBATE
ST# 1149...	2014 FOCUS SE SEDAN, RUBY RED.....	\$3,500
ST# 3285.....	2014 TRANSIT CONNECT, WHITE	\$2,000
ST# 3225.....	2014 F150 S/C LARIAT, GR/GEM.....	\$4,000

Eagle Country Ford

Not all customers will qualify for max rebates, some may qualify for additional rebates. Must finance with Ford Motor Credit on some, some must have a trade-in, rebates may change.

“Experience the Eagle Country Difference!”

215 East Main • Sidney, MT | 433-1810 or 1-800-482-1810 | eaglecountryfordsales.com

Buy Today... Move In Tomorrow!

- Perfect for your family! This 18’x76’ home gives you luxury and affordability in one! See for yourself:
- 1317 square feet!
- 3 Bedroom 2 Bathroom
- 9ft Sidewalls
- Tray ceiling in living room
- Cement board siding
- Breakfast bar
- Patio door
- Entry Closet
- Deluxe master bath
- Transom windows
- Move in Ready!
- This is truly the Cadillac of single section homes!

Magnolia Homes

MH-111

Price Reduced

only \$84,995

Move In Ready Homes • Manufactured Home Lots Available

Land & Homes For Sale • RV Spots Available

WHEATLAND HILLS SUBDIVISION

ISEMAN HOMES

1026 Juniper ST. • Culbertson, MT | (406) 551-5187 | Mon, Wed & Thurs: 9am - 7pm • Tues & Friday: 9am - 6pm



RoundupWEB.COM
Everything Roundup on the web.

MNAXLP



Richland County Fair & Rodeo
 "Building Memories One Fair At A Time"
August 5-8, 2015
 PO Box 1026 • Sidney, MT
 406-433-2801

PRESALE TICKET PRICES AVAILABLE THRU JULY 31

PRCA Rodeo
Brookman Rodeo LLC
Thurs & Fri, August 6th & 7th
7:30pm each night

Free Activities!

- Agriculture & 4-H Exhibits
- Commercial Exhibits
- School Exhibits
- North Star Amusements Carnival
- Tigrilily; Wed Night (Aug 5) at the Grandstand

\$5 Freckle Farm Pony Rides

- Jeff Martin, The Blond Curly-Haired Magician; Wed-Sat
- Lloyd & Willy & Willy's Washboard Jamboree; Wed-Sat
- The Chicken Rider; Thurs-Sat
- Petting Zoo; Thurs-Sat

Package Deal \$68: 1 Concert Ticket, 1 Admission Button, 1 Thurs Rodeo Ticket & 1 Fri Rodeo Ticket

Wear pink to the Friday Rodeo for "Tough Enough to Wear Pink Night!"
 Wear red, white or blue to the Thursday Rodeo for "Military Appreciation Night!"

Carnival Pay One Price Passes \$20

Friday, August 7th

In Concert
Sat, Aug 8th • 7:30 pm



MARTINA MCBRIDE

With Special Guest Love and Theft

Presale:
 General: \$45

During Fair Week:
 (If Available)
 General: \$50

Ribfest 2015 Set For Aug. 7 In Watford City



The Ribfest 2015 Planning Committee has set Friday, August 7th for this year's event on Main Street, Watford City.

Concessions and the Street Fair will start at 10 a.m. and the rib contest will take place at 5 p.m. Main Street will be open for the public to enjoy lunch, live music, kids games and inflatables, and ribs until 9 pm.

This year's Ribfest is working together again with the 2nd Annual Bash on the Grass Concert Series featuring a concert by Sawyer Brown and Chris Cagle.

Sawyer Brown and Chris Cagle will perform at 8:30 at the McKenzie County Fairgrounds. Gates open at 6:30.

"Bringing these big names to an already popular event is pretty exciting," said committee chair Jessie Scofield about working with Bash on the Grass. "We hope people will be able to take in both the street fair and ribfest and the concert in the evening."

The Ribfest Committee is

currently taking registrations for ribfest teams, street fair vendors, and sponsorships.

"There's big prizes at stake and slots are filling fast, so get your registration in," said Scofield.

A \$1,000 prize will be awarded for the team with the best ribs. Second place will receive \$500 and there will be a \$250 prize for booth showmanship.

The day will be filled with live music from and entertainment from the Burning Hills Singers, Lonesome Willy and Jessie Veeder and Outlaw Sippin', among others.

Other events include inflatable kids' games, a children's "Diaper Derby" and a children's "Showdown" at noon where prizes will be awarded for the best western wear.

The public will also enjoy the Classic Car Show and a few friendly rounds of Bingo during the day. There will be street vendors and several ping pong drops that will offer special deals from Main Street businesses

"Ribfest just gets bigger and better every year," said Janel Lee, committee member. "It's a great way to bring the community together and celebrate the best parts of summer--music, friends, and food!"

The Best of the West Ribfest is limited to 20 teams. If you're interested in registering a team, sign up today as space is limited.

Teams, food and craft vendors and Classic Car Show participants may register online at www.watfordcityribfest.net.

More information for Bash on the Grass at www.facebook.com/WATFORDCITY-BASHONTHEGRASS

Ribfest is also looking for sponsors. If you are interested or have questions contact the Watford City Chamber of Commerce at 701-570-5084 or wcchamber@ruggedwest.com or www.facebook.com/BestOfTheWestRibfest for more information.

Save Time & Money With Great Communication!

Handhelds

TK-2402
 Handheld 5 watts w/scan

\$289

Kenwood

Mobile Radios

50 to 110 watts •
 16 to 127 channels •
 small & easy to use •
 starting at \$359 •

Fairview Old Timer's Buttons Available Now! \$1.00 While They Last!

Call Larry Today At...

ADVANCED COMMUNICATIONS

Mobile Radios • Pagers • Satellite Telephones

Just North of McDonald's • Sidney, MT | 406-433-1659 • Toll Free: 1-866-433-1659



"Your communication headquarters"

Sizzlin' Summer Cash Giveaway

\$5,000

QUALIFY DAILY STARTING JUNE 15!

1ST DRAWING 7/15 - \$500
2ND DRAWING 8/1 - \$1,500
3RD DRAWING 8/15 - \$3,000

Complete rules and regulations available at the Rodiron Grill Casino.

CASINO OPEN 8:00 A.M. DAILY!



520 N. CENTRAL AVENUE SIDNEY, MONTANA



WEB.COM

Everything Roundup on the web.







PLUS Lots of Other Big Boy Fireworks

Open June 26 - July 4
 3 Miles east of Fairview on Hwy 200
 (Previously Known as Big Opening)

BLACKWOOD ESTATES

RESIDENTIAL SUBDIVISION

Beautiful New Subdivision!
 Williston, ND

We specialize in first time homebuyers!

Here's what we offer you:

- Extremely low down payments
- Free pre-approvals
- 3 & 4 bedroom homes
- Fully applianced kitchens
- One + and 2 acre lots
- Attached 2 or 3 car garages
- FHA, VA, USDA & conventional loans
- Turn-key

Amenities:

- Five minutes from Walmart
- School bus service
- Park with water feature
- Great views!

5464 Matthew, Satinwood Model

\$2133 per month!



OAC: Financing \$123,400 on FHA loan, includes closing costs
 3.5% Down payment required, 4% Fixed 30 yr.
 \$2225 - \$1000 Principal & Interest - \$1225.00/mo.
 Estimated Taxes, Insurance, & Private Mortgage Insurance \$589.51 mo.
 Premier Home Mortgage, Inc., Cody Work, NMLS #173843

Get pre-approved online!



Largest display of homes!



For pricing & inventory, give us a call today!
701-264-8022

For housing purchases outside of Blackwood Estates, please call 701-847-7047

blackwoodestates.com

Left: Seth Dodds is swimming the back stroke im in the 13-14 year old division. Photos by Pam Dahl.


Roundup
WEB.COM
Everything
Roundup on
the web.



Right: High point winners were Hadley Garsjo, left in the 11-12 year old age division and Corbin Holler in the 8 & under age division.



Torey Dahl: 200 IM, 2nd place • 100 Back, 1st • 100 Fly, 1st. Seth Dodds: 200 IM, 2nd • 50 Free, 7th • 100 Free, 5th. Ethan Erickson: 25 Free, 3rd • 50 Free, 4th. Zoey Garsjo: 25 Free, 6th • 50 Free, 4th • 25 Back, 6th. Corbin Holler: 100 IM, 1st • 25 Free, 1st • 50 Free, 1st. Autumn Larson: 50 Free, 3rd • 100 Breast, 4th • 400 Free, 5th. Gracie Phelps: 50 Free, 4th • 100 Free, 3rd • 50 Fly, 9th.



22 BOOTS

**JUNE 27, 2015
VETERANS PARK
SIDNEY, MT
10:00 A.M. - 12:00 P.M.**

It is estimated that 22 Military Veterans commit suicide *EVERY* day. We invite all veterans, current service members, their families and the community to join us as we bring awareness and resources for the invisible wounds suffered by our service members. Speakers include:

- **VFW POST #4099**
Post Commander Les Poland
- **AMERICAN LEIGON**
Post Commander Jeff Wadell
- **MT AIR NATIONAL GUARD OUTREACH**
Kerrie Wheeler, LCPC
- **WARRIORS ON THE WATER**
Providing outdoor recreation and therapy for military veterans with PTSD
- **RIVER**
Rural Institute for Veterans Education & Research

Speakers begin at 10:30 a.m.

PTSD AWARENESS

ART OF WAR PROJECT

The MonDak Heritage Center presents the Art of War Project, June 12 through July 24, 2015. The Art of War Project's mission is to inspire hope and contribute to the health and well being of American Veterans dealing with PTSD by providing a positive outlet through art. Opening reception is Friday, June 12 at 7pm. Open and free to the public. Refreshments will be served. Founder Curt Bean and participating artists will be on hand to discuss their art.

Ron Boughton Farm Auction

Lunch will
be Served.

Sale Location:

➤ From Kenmare's west edge take Ward County rd. 1 & go 5 miles south to Ward County rd. 4 & then 4 3/4 miles west. (Farm on south side of road.)
➤ From Niobe go 5 miles south & 3/4 miles west.
➤ From Stanley go approximately 20 miles north on highway 8 to Burke County rd. 20, then go 8 1/4 miles east on Cty rd. 20

SALE INFO: Ron
(701) 848-6170
(701) 848-2453

Sat., June 27, 2015
11 a.m.

Rural
Kenmare
ND

Not many small items, be on time!

Tractors

2008 JD 9430 Track Tractor, 1370 hours
2008 Case IH MXU 135 with LX 156 loader
(2009), 2875 hours, self level loader.

Co-op #3 Tractor

Harvest Equipment

9600 JD Combine, 1263 separator hours,
chopper and chaff spreader, low hours &
always shedded, nice!

930 Straight header with header trailer,
pickup reel

914 Pickup header w/rake up pickup
25' JD 590 Swather

Field Equipment

45' JD 1820 Air drill w/1910 cart
45' Flexcoil cultivator, floating hitch

45' Wilrich cultivator w/gandy

72' Flexcoil harrow

35' Krause disk

Degelman reel rock picker, 6000 signature
series, hydraulic driven, hydraulic swing
hitch

Willmar fertilizer spreader
Swath roller

Trucks & Trailer

2004 Freightliner, Columbia, 22' box, triples,
rear controls, 430 detroit, 520,000 miles

1976 Chevy C60 single axle, roll tarp, 350
engine

1996 GMC 3500 w/flatbed

24' ABU 5th wheel trailer w/hay rack

Grain handling & storage

(3) 4200 bu. Meridian hopper bins w/air
8x52 Sakundiak auger, 18 HP engine, electric
start & winch

7x35 Sakundiak (2012) w/16 HP and drag
auger

10x62 Wheat heart swingout (2012)

Misc.

1500 gal water tank

235 gal service tank & pump

Valmar Box

Davis loader (for ford tractor)

gas pump

JD HX15 rotary mower

HAUGLAND'S ACTION AUCTION

12520 104th St. NW -- Ambrose, ND 58833
Phone 701-965-6234 -- FAX: 701-965-5234

No sale is too big, too
small, too near, or too far!

- Butch Haugland, #211
Auctioneer
- Drew Haugland, #730
Auctioneer
- Amber Haugland, #693
Auctioneer
- Diane Haugland, #236
Clerk

Not responsible for accidents. Those attending sale do so at their own risk.

www.hauglandauctions.com

DRIVE

AND DISCOVER






JEEP CHEROKEE SPORT 4X4

MSRP	\$26,785
Action Auto Discount	-\$476
Chrysler Rebates	-\$2,000
You Pay	\$24,309*



Deep cherry red crystal, automatic, air conditioning, tilt, cruise control, power locks, power windows, heated front seats, heated steering wheel, remote start

#4646

Plus 5 Year/100,000 mile limited powertrain warranty.

*Must qualify for all rebates

ACTION AUTO





GARY MCPHERSON
HM: 488-7759

GARY SCHLOEPF
Cell: 489-2312

JON NELSON
Cell: 206-669-5285

433-2312 • 1-800-788-2312

www.actionautochryslerdodgejeep.com

220 East Main, Sidney, MT






The Roundup Classifieds

Reach Over 21,000 Readers Each Week In Eastern Montana & Western North Dakota And Always On The Internet at roundupweb.com
(Paypal required for online purchases)

Add a photo to your classy online! (additional charge)

Now Taking Credit Cards!
(5% charge added to all transactions)

Get Up To 30 Words For Just \$9 • Deadline: Monday

HELP WANTED NEW BOARD MEMBERS NEEDED

The Lewis and Clark Trail Museum board is currently seeking new members. Please visit the museum, send an email to LewisandClarkND@gmail.com or call the museum at (701) 828-3595.

PART TIME KITCHEN HELP

The Eagles Club in Watford City is looking for part time kitchen help. Stop in 1 mi south Hwy 85S for an application.

BAINVILLE SCHOOL OPENING

Elementary education teacher opening. Salary starts at \$33,000. Affordable district housing available. Must have or be able to obtain appropriate Montana licensure. Application available at bainvilleschool.k12.mt.us or call Renee Rasmussen at 406-769-2321.

WRITER/EDITOR/ REPORTER

The Roundup is looking for a full-time writer/editor/reporter. Salary DOE. Apply at the Sidney Job Service.

CARRIERS NEEDED

Need extra cash or want to get some exercise while getting paid? We have carrier routes available in most parts of Sidney. Call 406-433-3306, or fill out application at The Roundup, 111 W. Main, Sidney.

BARTENDERS WANTED

Enjoy a private club atmosphere. Bartenders needed at the Elks Lodge, Sidney, MT. Call 406-480-9052.

REAL ESTATE FOR SALE BY OWNER

4 bedroom, 2 bath, 2 kitchen, 2 car garage, central A/C, fenced yard on large corner lot. All remodeled. At 223 3rd Ave NE, Sidney. Call 406-239-1596 or 406-239-6622. \$209,000.

MANUFACTURED HOME FOR SALE

Manufactured home for sale south of Watford City. Excellent condition, 1 acre lot with mature trees, triple garage, 20 x 22 shop, 3 bed, 2 bath. 1417 6th St SW. Must see! 701-770-3808. Priced to sell!

5 ACRE COMMERCIAL LOTS FOR SALE

Conveniently located between Williston & Watford City, right off Hwy 85. Graded recently. Perfect for a new shop, or business! Lots have rural water, power, RTC, & electric right at the road. Hwy 85, S. on 140th Ave NW, 1/4 mile on right. 406-471-4049.

FOR RENT OFFICE/RETAIL SPACE FOR RENT

Located in downtown Sidney within the Yellowstone Building. Utilities paid., cell phone booster, wireless internet, \$750/mo. Call Marci at 701-770-1904.

HOME FOR RENT

3 bedroom 2 bath, 16x76 home, with 12x20 shed, in Fairview email schmartsolutions@gmail.com or call 488-6183.

PARTIES, WEDDINGS, GET TOGETHERS

Ultimate Showdown Assoc. located at Hefty Seed Co. south of Sidney has tables &

chairs for rent. Will deliver. Call 406-488-4338.

FOR SALE

CHURCH PEWS

Twelve church pews with padded seats. Call 701-842-2556 if interested.

LOCALLY RAISED HAMBURGER FOR SALE

For sale - locally raised hamburger, \$4/lb. Call 406-489-3255.

ALPENLITE 5TH WHEEL

AlpenLite 5th wheel for sale. 32', 2 slides, new tires & batteries. Never lived in. \$15,000 OBO. 406-480-5000, leave message.

BOAT FOR SALE

Lund boat for sale. 18ft, 1984 Tyee wih 115hp with 10 horse kicker. After 6pm, call 406-776-2408 if interested.

AUTO

2002 AMERICAN IRON HORSE

American Iron Horse 2002 for sale. Call 406-381-6339 for more info. Must see to appreciate. Serious inquiries only.

Bakken Mobile Veterinary Service

Dr. Vince Stenson
Complete small animal care
8 am - 4 pm

Sidney:
Tues, June 30, July 7, 14, 21, 28
Tractor Supply Co.

Culbertson:
Wed, June 24, July 1, 8, 15, 22, 29
County Ext. Bldg on Main Street

Stops Available In **Fairview & Bainville** By Request

Call for Appointment
(701) - 609 - 3705

FARM & RANCH

J.D. 158 LOADER

J.D. 158 loader for sale, 8' bucket with grapple, J.D. mounts, 3 lever control, no welds, pins tight. \$6,000 OBO. Call 406-963-2228.

FARMHAND 248 LOADER

Farmhand 248 loader for sale, 7' bucket with grapple, J.D. mounts. \$1,750. Call 406-963-2228.

J.D. SICKLE MOWER

J.D. #11 sickle mower for sale. 7' sickle, 540 PTO. \$750. Call 406-963-2228.

RED ANGUS YEARLINGS FOR SALE

For sale - registered red angus yearling bulls. Franz Ranch, Ray or Jon Franz 406-798-3675.

CUSTOM HAY GRINDING

Fodder & Sons, Inc. custom hay grinding. Call Steven Vinnedge or Parker Hesper, 406-781-1197.

Mini-Storage



STORAGE UNITS AVAILABLE

20X20 • 10X20

10X16 • 8X9

Sidney, MT
482-3799 or 482-2666

SIDNEY FEEDS

Sweet Pro Premium feed supplements for cattle & horses. Located at Hefty Seed Co., south of Sidney. Call 406-488-4338.

MINERALS & SUPPLEMENTS

Complete line of minerals & supplements, Crystalx protein & mineral tubs for cattle, horses & sheep. All types of liquid feed for livestock. Calving supplies. R&J Ag Supply 406-488-1953, 406-480-2006, 1-800-233-2499, Sidney, MT.

VERMEER HAYING EQUIPMENT

See us today for all your haying & feeding equipment, sweeps & farm oil. Anderson Vermeer Sales & Service. Open Mon.-Fri., 8 a.m.-5:30 p.m. 701-828-3358 or 701-828-3482 (after hrs.). Alexander, ND.

SERVICES

R&L PAINTING

Will paint houses, barns, quonsets, silos, grain bins, etc. References available. R&L Painting, call 406-488-8244 or 406-480-4055.

AIRCRAFT BUYER AND SELLER

Aircraft buying or selling? Call Sidney Air Service, Inc for sales and acquisitions! Call 406-488-4031, ask for Barry.

WINDSHIELD REPLACEMENTS

Lowest price around. Quick service. Over 300 windshields in stock for cars pickups & semis. Magrum Motors, 1820 2nd St. W., Williston, 701-572-0114.

WELDING

Welding & repair work. No job is too small. Portable welder, reasonable rates. 701-444-2936.

Roosevelt Medical Center Culbertson, MT

Tel: 406.787.6401 www.rooseveltmedical.org

Current Employment Opportunities

CERTIFIED NURSE'S ASSISTANTS:
Urgently needed. Must be dependable, reliable, and compassionate.

HOSPITAL RN/LPN

Clinic RN/LPN: Needed Monday-Friday 8am-5pm. Duties include: general clinic nursing duties such as patient intake, chart documentation, assisting with procedures, pharmacy and specialty referrals, filing, scheduling, telephone contacts, input into computerized medical record, and child vaccinations.

RMC Benefits: Health & Life Insurance, 401K, Extended Illness Bank, Personal Time Off, and Competitive Salaries. For more information visit our web page or call 406.787.6401 Find us on Facebook
Quality Service • Caring People • Join Our Team!

J & S FEEDS
More than just a Feed Store...

jsfeeds@midrivers.com

P: 1-406-377-2180
F: 1-406-377-2181

1000 N MERRILL GLENDAVE, MT 59330

Gifts, Total Equine, Pet Foods, Ropes & Tack!

HEADQUARTERS FOR STOCKMEN
Williston Saddlery
14096 West Front Street - Williston, ND
4 1/2 Miles West on Hwy 2

We are like a good Horse - We aim to please

• Saddles - New & Used
• Tack & Riding Supplies
• Team Roping Items • Montana Silver Jewelry
• Purina Horse Feeds - Purina 4-H Show Feeds

"If ya wants it - we gots it.
If we ain't gots it - we can gets it.
If we can't gets it - ya don't really wants it!"

TELEPHONE
701-572-2267

SIDNEY HEALTH CENTER
Exceptional Care for Life

EMPLOYMENT OPPORTUNITIES

Sidney Health Center's most valuable resource is the people who serve our patients, residents and guests. Join our team!

- **Certified Surgical Scrub Technician**
- **Clinic Pharmacy Cashier/DME**
- **Clinic RN/LPN**
- **Food Services**
Cook
Utility Worker
- **Groundskeeper**
Regular & Seasonal
- **Lead Systems Engineer IT**
- **Lodge**
Cook
Dietary Aide

We promote a Work-Life Balance

STOP 100 9 Out of 10 Employees Agree:
"I don't have to choose between my job and family!"

For additional information or to apply online, please visit our website or contact: Marilyn Olson • Phone: (406) 488-2571
mjolson@sidneyhealth.org • 216 14th Ave SW • Sidney, MT

Visit Our Website at: www.sidneyhealth.org

Kids, Earn \$\$\$\$

Join The Roundup Carrier Team!

\$100

SIGNING BONUS!*

Plus Cold Weather Bonus During the Winter Months & Periodic Raises!

Routes Available In Many Sidney Neighborhoods!

Call us at:
(406)433-3306
for details.

The Roundup

*Distributed over a 5 month period.

The Roundup
Auto Trader

Only \$17 A Week!

If you run it for 2 weeks & it doesn't sell, we'll run it for 2 more weeks.....**FREE!**

2007 Freightliner Columbia

14L-455 Detroit, 10 speed ultrashift, Jake, good condition, has been DOT



Call 701-693-2833

\$29,500

Want to place an ad in the Auto trader?

classads@esidney.com • (406) 433-3306 for details

CALL FOR BIDS
Sioux Township, McKenzie County, ND, is accepting bids for a parking lot pavings project with the following specifications:
Bids can be submitted for either 4.5 inches of asphalt or 6 inches of reinforced 4000 psi air entrained concrete, reinforcing rod 24 inches on center.
Site preparation consists of: 475 cubic yards of sub excavation. 300 cubic yards of compacted aggregate base. 12,000 square feet of separation fabric. 1,100 square feet of 6 inch concrete removal, or 4.5 inches of asphalt with 7.5 inches of compacted aggregate base with separation fabric.
A North Dakota contractors license is required along with 5% bidders bond. Cashiers check and insurance certificate must accompany bid in separate envelope attached to the outside of the bid envelope. Bid prices will be guaranteed for 30 days.

Owner reserves the right to reject any and all bids or waive any irregularities or informalities in any bids or in bidding. Bids will be accepted until July 9, 2015. On that date bids will be opened at a township meeting held at the Cartwright Community Center at 7:00 pm CT. Submit bids to Ray Skogen, 15184 Highway 200, Cartwright, ND 58838. Email raymon220swift@yahoo.com.

CALL FOR BIDS
Souix Township, McKenzie County, ND, is accepting bids to make a water service connection between the 8" pvc McKenzie Rural Water line located on the north side of ND Highway 200 and the Cartwright Community Center and firehall located in the southeast quadrant of the intersection of ND Highway 200 and McKenzie County Road 16 in Cartwright, ND. Following are the requirements:
1. Approved Installer's Permit.
2. Approximately 300 feet of 1 inch 200 psi poly pipe bored at 7 foot depth.
3. Highway crossing permit.
4. 7 foot bury meter pit.
5. 1 inch curbstop and valve box.

6. Connect to the existing service line entering the building using the existing hydrant.
7. Necessary compaction on backfill.
Bidder prices must be guaranteed for 60 days. Owner reserves the right to reject any and all bids or waive any irregularities or informalities in any bids or in bidding. Bids will be accepted until July 9, 2015. On that date bids will be opened at a township meeting held at the Cartwright Community Center at 7:00

pm CT. Submit bids to Ray Skogen, 15184 Highway 200, Cartwright, ND 58838. Email raymon220swift@yahoo.com.

NOTICE
PLANT PARADISE
Plant Paradise will be open through July 3rd for regular business hours with daily specials in the bargain corral. We will be closed on July 4th and be open by appointment only until plants are gone thereafter. For more information please contact Linda at 798-3334.



The Roundup

Do you have news or photos from McKenzie County you would like in The Roundup?

CONTACT:
Kathy Taylor in Watford City
701-842-6188

The Roundup Classifieds

Reaching over 11,079 Households in Western North Dakota and Eastern Montana Every Week

(Please Print)

1	2	3	4	5	6
7	8	9	10	11	12
13	14	15	16	17	18
19	20	21	22	23	24
25	26	27	28	29	30
31	\$9.10	32	\$9.20	33	\$9.30
34	\$9.40	35	\$9.50	36	\$9.60 (etc.)

\$9.00 for 30 words or less; 10¢ per additional word
Payment Must Accompany Ad

Number of words _____ x Number of Times _____ = Cost \$ _____

Name _____

Mail To:
The Roundup
PO Box 1207, Sidney, MT 59270

LAND SALE

RICHEY, MT—DAWSON COUNTY

Whiteman Incorporated is accepting bids for:
Section 6- 21N 52E---547.18 tillable acres & 93.97 grass acres
Section 7- 22N-52E---551.74 tillable acres & 79.76 grass acres
Section 9- 21N-52E---441.97 tillable acres & 204 grass acres
½ section 2-20N-51E---291.74 tillable acres & 31 grass acres (CRP Section)
Section 6-N20-52E---529.53 tillable acres & 91.30 grass acres
Please submit 1st round signed bids with a contact number by July 25, 2015 to:

Tilda Whiteman
Box 72
Richey, Mt 59259

Bids will be reviewed and bidders will be notified of high bid. Bidders will then have an opportunity to raise their bid. Land titles can be secured after Oct. 1, 2015.

Whiteman Incorporated reserves the right to refuse or accept any bid.

Inquiries should be directed to
Tilda Whiteman @ 773-5575 or 979-5575

THE BUSINESS ROUNDUP

REACH 26,500 READERS IN THE ENTIRE MONDAK REGION

406-433-3306 OR 800-749-3306 ~ INFO@ROUNDUPWEB.COM

GO TO WWW.ROUNDUPWEB/DIRECTORY FOR DIRECT LINKS TO COMPANY WEBSITES & LOCATIONS

\$25⁰⁰/WK

Beagle PROPERTIES INC.

View all our listings at
www.beagleproperties.com

NICK JONES REAL ESTATE REALTOR

TRUCK ROUTE SOUTH, SIDNEY
OR CONTACT ONE OF OUR AGENTS:

JUSTIN JONES
406-480-9525

DENISE WICK
406-480-1550

JENNIFER FRANZEN
406-478-3773

KRISTIN LARSON
406-480-5139
HOME: 798-3115

WWW.NICKJONESRE.COM

For all your Farm/Ranch, Recreational, Residential, and Commercial needs.



Alan Seigfreid
Amanda Seigfreid

Jim & Janice Knudsen 120 2nd St. N.E. • Sidney Mt. 59270
Broker/Owners (O) 406-433-3010 • (C) 406-489-3010
email: alans@midrivers.com
Website: www.missouririverrealty.com

DOORBUSTN

Portables & Septic Service, LLC

Blaine Rogers, Owner

PO Box 1003
Sidney, MT 59270

Office: (406) 433-7586
Fax: (406) 433-7596
Service: (406) 489-8915

www.doorbustnportablessepticsevice.com

Steve Kober

Master Plumber

Plumbing Division
Licensed in MT & ND

Toll Free: 1-877-488-8066
Office: 1-406-488-8066
Fax: 1-406-488-8067
stevek.agri@gmail.com



1775 S CENTRAL AVE • SIDNEY, MT 59270 | WWW.AGRIINDUSTRIES.COM

HOSE ASSEMBLIES WHILE YOU WAIT



MFCP MOTION & FLOW
CONTROL PRODUCTS, INC.

Fluid Connectors • Industrial Hose • Seals
Hydraulics • Pneumatics • Automation
Filtration • Racor • Instrumentation

406.433.1590
After Hours 406.478.3118
Fax 406.433.1590

SIDNEY, MT
205 2nd Ave NE
WWW.MFCPINC.COM

Coverage for all the things you care for.

TIFFANY STEFFAN
323 E Main Street,
SIDNEY, MT 59270
TSTEFFAN@FARMERSAGENT.COM



Call 406-433-1377 today for Auto, Home, Life and Business.

Customer Service is Our #1 Priority



BORDER
STEEL AND RECYCLING, INC.

Farm & Ranch Products & Construction Materials. New Steel, Auminum & Stainless.

Brady Smelser • Tim Mulholland • Kelly Moody • Bret Smelser • Ernie Gawryluk

Sidney
35002 CR 123
406-433-7737
1-855-810-2995

Glendive
2703 W. Towne St.
1-800-423-5219

Williston
13896 W. Front St.
1-800-820-5493

Plentywood
Hwy 16 East
406-765-2624



SONDA'S
Solutions
Specializing in
FR CLOTHING & EMBROIDERY

Office: 406-433-6757
Fax: 406-433-6755
Mon-Fri: 8am - 6pm
Closed: Sat & Sun
2221 S. Central Avenue
Sidney, MT 59270



B&B
SALES & SERVICE
SIDNEY, MT
TRAILERS

TRAILERS
• Cargo • Flatbed
• Parts • Repairs
GOLF CARS
TRAEGER GRILLS
Mark Brodhead
Manager
Cell: 406-480-7332
Office: 406-433-1888
34940 Highway 23
Sidney, MT 59270

email: bbtrailers@midrivers.com
website: bbsalesandservice.com

TRADING POST

111 E. MAIN STREET • SIDNEY, MT. 59270

CONSIGNMENT • ANTIQUES
GUNS • TOOLS • PAWN

1-406-433-7676

ASK FOR JERRY OR JOANNA

MARTINI STEEL & SEAMLESS RAIN HANDLING

Serving The Region For 50 Years!

• Seamless Rain Gutters
• Siding & Roofing
• Soffit & Fascia
• Maintenance-Free Decks



Office: 406-798-3828 • Tom: 406-480-9078 • Dan: 406-291-0437



SERVICES, INC.
Oil Field & Industrial
Construction

2265 S. Central Ave.
Sidney, MT 59270
Email: las@slservices.net
Phone: 406.433.6754
Fax: 406.433.6755



www.slserviceinc.com

Roundup WEB.COM

YOUR COMPANY
HERE

USDA Opens Enrollment Period For Agriculture Risk Coverage And Price Loss Coverage Safety-Net Programs

WASHINGTON – U.S. Department of Agriculture (USDA) Secretary Tom Vilsack today announced that eligible producers may now formally enroll in the Agriculture Risk Coverage (ARC) and Price Loss Coverage (PLC) programs for 2014 and 2015. The enrollment period begins June 17, 2015, and will end Sept. 30, 2015.

“The extensive outreach campaign conducted by USDA since the 2014 Farm Bill was enacted, along with extending deadlines, is central to achieving an expected high level of participation,” said Vilsack. “We worked with universities to simplify these complex programs by providing online tools so producers could explore how program election options would affect their operation in different market conditions; these tools were presented to almost 3,000 organizations across the country. The Farm Service Agency also sent more than 5 million educational notices to producers nationwide and participated in over 4,880 educational events with more than 447,000 attendees. I am proud of the many committed USDA employees who worked hard over the last several months to provide producers support to help them make these important decisions.”

The new programs, established by the 2014 Farm Bill, trigger financial protections for agricultural producers when market forces cause substantial drops in crop prices or revenues. More than 1.76 million farmers have elected ARC or PLC. Previously, 1.7 million producers had enrolled to receive direct payments (the program replaced with ARC and PLC by the 2014 Farm Bill). This means more farms have elected ARC or PLC than

previously enrolled under previously administered programs.

Nationwide, 96 percent of soybean farms, 91 percent of corn farms, and 66 percent of wheat farms elected ARC. 99 percent of long grain rice farms, 99 percent of peanut farms, and 94 percent of medium grain rice farms elected PLC. For data about other crops and state-by-state program election results go to www.fsa.usda.gov/arc-plc.

Covered commodities under ARC and PLC include barley, canola, large and small chickpeas, corn, crambe, flaxseed, grain sorghum, lentils, mustard seed, oats, peanuts, dry peas, rapeseed, long grain rice, medium grain rice (which includes short grain and sweet rice), safflower seed, sesame, soybeans, sunflower seed and wheat. Upland cotton is no longer a covered commodity.

The 2014 Farm Bill builds on historic economic gains in rural America over the past six years, while achieving meaningful reform and billions of dollars in savings for the taxpayer. Since enactment, the U.S. Department of Agriculture has made significant progress to implement each provision of this critical legislation, including providing disaster relief to farmers and ranchers; strengthening risk management tools; expanding access to rural credit; funding critical research; establishing innovative public-private conservation partnerships; developing new markets for rural-made products; and investing in infrastructure, housing and community facilities to help improve quality of life in rural America. For more information, visit www.usda.gov/farmbill.

Super Saving Sale

Modulars starting at \$65 per sq. ft.



LOCK IN SALE PRICE, TAKE DELIVERY LATER!

• WOW!! Triplewide 2790 sq. ft. with all the bells & whistles.

SAVE \$1000's

• 1600 sq. ft. modular, 3 bedroom, 2 bath, 6" walls, glamour bath, low-e windows, upgraded cabinets. **ONLY \$113,900**

NEW HOMES
of the **FUTURE**

406-248-1100

www.newhomesthefuture.com

7239 South Frontage Rd., Billings, Montana 59101

HOMEFEST 2015

June 26-28

Friday

All Day:

Art Show: Long X Visitor Center

2:00-2:45 p.m.

Registration for Trish Gravos Memorial

Golf Scramble: Fox Hills Golf Course

3:00 p.m.

Tee Off for Trish Gravos Memorial Golf

Scramble: Fox Hills Golf Course

(Early start due to Kat Perkins at 8 pm)

8:00 p.m.

Kat Perkins Concert: Main Street



Saturday

All Day:

Art Show: Long X Visitor Center

Kids Zone: Main Street

Food & Craft Vendors: Main Street

9-5:00 p.m.

Parade of Homes

Start at the Long X Visitor Center

Parade of Homes

12:00 p.m.

Baby Pageant: Main Street

2:00 p.m.

StarKids Pageant: Main Street

7:45 p.m.

Award Presentation for Parade of Homes

8:00 p.m.

Jessie Veeder & Outlaw

Sippin': Street Dance on

Main St.



Sunday

8:30 a.m.

Scandinavian Coffee Social:

First Lutheran Church

9:30 a.m.

First Lutheran Church Dedication

10:00 a.m.

Lutheran Mass after Dedication

Lunch follows Mass

Under the Tent with Music and a Program



For More Information on Homefest and other Chamber events visit our website @ watfordcitychamber.com

Meyers Department Store

UHS

"We Have Something For Everyone!"

200 N Main
Watford City
701-444-2906

Pro
Auto Body

Corky & Marla Hayden
405 7th St. NE
Watford City, ND
701-842-2797

McKenzie County



Long X Visitor's Center
Watford City, ND
701-444-5804
www.4eyes.net

1 One Stop

Hwy 85 W • Watford City, ND
701-444-3122

Lund Oil Co.
Watford City, ND
701-842-2805

Farmer's Union Oil Co.



501 6th Ave SE
Watford City, ND
701-444-3639

LONG X BOTTLE SHOP



Hwy. 85 Watford City
701-444-3335
Mon-Sat: 8am - 9pm
Sunday: 1 - 5pm

(Located in the Long X Visitor Center)

RTC

Smarter. Better. Faster.

www.RTC.coop
Phone • Internet • TV

Dakota West
CREDIT UNION

329 N. Main • Watford City
701-444-6484
Toll Free: 800-411-7590

McKenzie Electric COOPERATIVE



908 4th Ave. NE
Watford City, ND
701-444-9288

Delmar Rink Construction

Keene, ND
701-675-2700

Farmers Union INSURANCE
"You're Never Alone"

Dennis Anderson Representative

701-444-3273
229 N. Main
Watford City, ND

For all your application & crop protection chemical needs!

TAYLOR Ag Service

Kent Taylor, Owner
Watford City, ND
701-444-3772
Licensed in ND & MT

S&S Motors

• Pre-owned Vehicles
• Full Service Shop

701-444-2341
WATFORD CITY, ND
www.sandsmotorsinc.com

Northern States Fishing Tool Co., Inc.

Service & Rental Tools
Box 346 • Watford City, ND
701-842-3350

Feedin' the Bakken TJ's PIZZA & More

Watford City, ND
Mon-Sat: 9am - 10pm • Sun: 4 - 9pm
701-842-2771
½ mile south on Hwy. 85

Coca-Cola

of Williston
Your Locally Owned & Operated Soft Drink Specialist

701-572-6746

Agents with answers.

Eric Mogen
Watford City
444-6048

Nodak Mutual Insurance Company
www.nodakmutual.com

Roundup

A DARN GOOD LITTLE NEWSPAPER!

PO Box 1207
Sidney, Montana
406-433-3306



IN ADDITION TO CARS,
TRUCKS & FARM IMPLEMENTS

**WE HAVE
TIRES FOR**

- Horse Trailers
- Motor Homes
- ATV's
- Garden Tractors
- Boat Trailers
- Golf Carts
- Flatbed Trailers
- Wheelbarrows
- Utility Trailers
- Tillers
- Campers
- More

If we don't have it,
we can get it!
We can also
get rims.

Western Tire Co.

1601 SOUTH CENTRAL • SIDNEY, MONTANA

433-3858 • Open 7-5:30 M-F & 7-Noon Sat.

Unreal RC
The Ultimate in Remote Control Hobbies

*Brushless Electric -
Greater Speed and Reliability*

**GAS & ELECTRIC CARS, TRUCKS,
PLANES, BOATS AND HELICOPTERS**



701-577-1032
Located In
Chaney's Total Auto

PROP SHOP

PROPELLER SERVICE

REPAIR • BALANCE • PITCH







Modern Machine

WORKS

701-572-7741 • 1-800-319-7741

Williston, ND

LONG X BOTTLE SHOP

Located In the
Long X Visitors'
Center

Mon-Sat: 9am - 9pm
701-444-3335
Watford City, ND



In-Store Specials Every Week

JET SKI® ULTRA® 310LX

**SUPERCHARGED
TO EXCITE**

- INDUSTRY-FIRST HEAT-RESISTANT SEAT COVER
- 310 HP SUPERCHARGED ENGINE
- JETSOUND™ AUDIO SYSTEM

**Arnie's
Motorcycle**

**503 2nd St W
Williston, ND
701-572-3382**

Kawasaki
Let the good times roll.

KAWASAKI CLAIMS: Ride responsibly. HP measured in PS at the crankshaft under controlled conditions. Actual performance may vary. Always wear a USCG-approved personal flotation device, eyewear, and other appropriate safety apparel. Never ride under the influence of drugs or alcohol. Respect the rights of shoreline residents and other marine recreationists. Read manual from the start. Take a Boating Safety course. For more information visit www.USCGBoating.org. Jet Ski® watercraft are inboard powerboats and their use is subject to all applicable federal, state, and local boating laws. Read Owner's Manual and all on-product warnings. ©2014 Kawasaki Motors Corp., U.S.A.

15JKU310LX6X5C6X5C

Make TJ's a stop on your way to and from the lake!

Full Menu

- Steaks • Hamburgers • Pizza
- Seafood • On/Off Sale Liquor • Drive-up Window • Full Bar • Big Screen TVs



Hwy. 85S
701-842-2771
Watford City, ND

Enjoy the great outdoors this year!

**Low Rate
Secured
Loans**

***We Finance The Fun
Things In Life!***

Richland
FEDERAL CREDIT UNION

201 West Holly St. • Sidney, MT (406) 482-2704
18 East 2nd St. • Culbertson, MT (406) 787-5890

NCUA

Equal Housing Lender

OUTDOORS

Fireworks Prohibited On Wildlife Management Areas

display is not compatible.

Excessive noise and commotion that come with fireworks disturbs wildlife, and their explosive nature is a potential source of wildfires. Chances of a wildfire developing are greatly enhanced when explosives, such as fireworks, come in contact with tall grasses in rural areas.

A complete list of the WMA regulations is available on the Game and Fish website, gf.nd.gov.

DPHHS Urges Caution Regarding Rabies Exposures

If you or your child has any contact with a bat, or are bitten or scratched by any wild or stray animal, please do the following:

- Wash any bite or wound with soap and water.
- Contact a health care provider or public health department

- Contact a health care provider or public health department for appropriate follow-up.

Because bat bites can be difficult to detect, it is important that any potential physical contact with a bat be brought to the attention of a health care provider or public health officials for a risk assessment. Bats found in homes, especially sleeping areas, are a concern because people can be bitten by bats and not even be aware they were bitten. "It is important to consult with health authorities if you find a bat in your home," Oppen said.

"We urge people not to approach or feed wild or and stray animals and never touch a bat," said Elton Mosher of the DPH-HS Communicable Disease and Epidemiology Bureau. "Protect yourself, your pets and the community by getting your animals vaccinated and don't touch wild animals."

Officials remind anyone who may have been exposed not to destroy the animal before speaking to contacting the local health department. It may be possible to observe some animals to rule out rabies and eliminate the need for preventive treatment. Contact the local health department or animal control for instructions on what to do. More information can be found at <http://dphhs.mt.gov/>


Turn In Your Favorite Fishing Story And Get A



FREE Rod/Reel Combo

Submit your favorite fishing story and photos to The Roundup...and if we publish them, you will receive a free rod/reel combo!

EXPLORE RICHLAND COUNTY



Richland Park

- Picnic Shelter • Boat Ramp
- Camping • Playground
- Family Fun

**North of Sidney on Hwy 200,
then east on County Road 128**

Paul Williams, RN Departs RMC

By Jaimee Green
Paul Williams, a registered nurse, has left the Roosevelt Medical Center Clinic and moved to the San Francisco Bay area of California, where he accepted a nursing position with Tri-City Health Center.

Williams joined RMC in 2011 in an effort to learn more about working in the clinic environment and to positively impact the community. In California he will be working as a care coordinator in a specialty clinic focusing on disease prevention.

"It was a bittersweet decision to leave. I am going to greatly miss the friendliness of the community and the sense of family I have experienced at RMC," he said.

The new job is offering him career advancement that will bring him closer to his goal of working in public health and disease prevention. Williams also said he has been wanting to return to the Bay Area for some time. The move will bring him to a central location for visiting his family, most of whom reside in Orange County and the Sacramento area.



Paul Williams, RN

State Historical Society Of North Dakota Wins National Award For New Grade 8 Online Curriculum

BISMARCK — The State Historical Society of North Dakota was selected as a 2015 Leadership in History Award of Merit winner by the American Association for State and Local History for its multimedia project, "North Dakota: People Living on the Land," a new grade 8 North Dakota studies curriculum. The Award of Merit is presented for excellence in history programs, projects, and people.

"North Dakota is the first state in the country to offer an online eighth grade state history course based on primary sources," said Neil Howe, North Dakota Studies program coordinator. The new grade 8 online curriculum is free and available to the public at www.ndstudies.gov/gr8. The curriculum includes 90 topics on the history of North Dakota and is complemented with documents, photographs, maps, and films. It covers the place that is today North Dakota from about 500 million years ago to current events. Topics range from the formation of soil to the recent oil boom; from the quarrying of flint to Bobcat manufacturing.

MNAXLP

NO MATTER HOW "CUSTOM," WE CAN HANDLE IT!

- Commercial Store Front • Door Repair
- Window Installation & Repair
- Custom Glass Replacement
- Any Size Insulated Double Pane Glass
- Custom Shower Doors & Mirrors
- Roof Repair, Painting, Vinyl Siding & Mirrored Walls
- And More!



Vinyl Siding

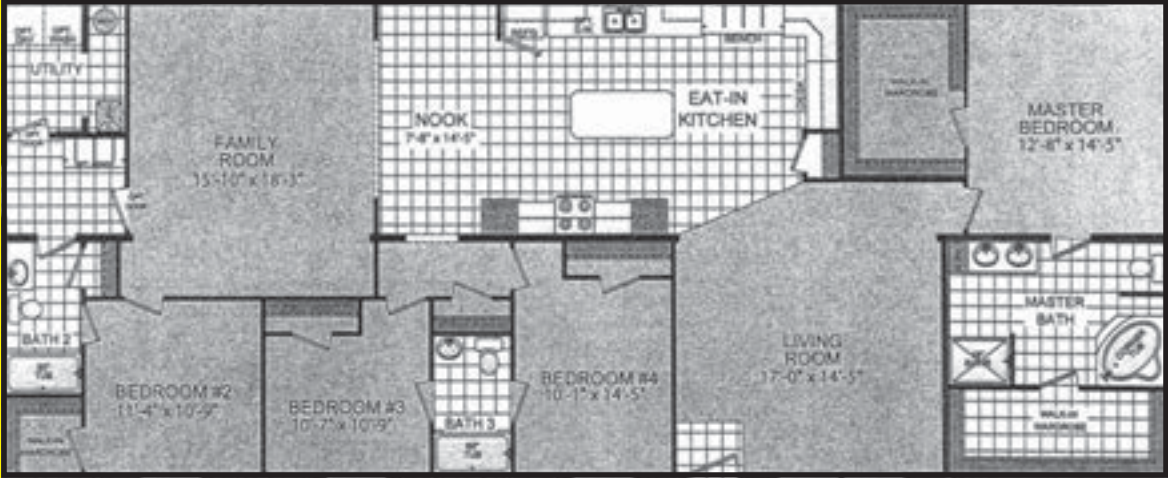


Mirrored Walls



WATFORD
Glass **701-300-0908**
"A Better Community Glass & Door Company!"
WWW.WATFORDGLASSANDDOOR.COM

SAVE \$32,000 ON THIS 4 BED/3 BATH "RED CEDAR" HOME!



At 2,305 Sq Ft and featuring a spacious Master Bedroom with 2 Walk-In Closets, Tray Ceilings, and a ceramic Serentiy dual-head shower, this home is a deal that won't come around again!

Many Other Homes Also Available To Suite Your Needs!

Useman Homes
YOU'RE HOME, NOW.

Mon-Fri: 9am-6pm
Sat: 9am - 4pm
2308 West Front St. Williston, ND | 701-572-2590



It's Raining Rams!



Ryan
MOTORS 701-577-1111 1212 W 2nd St, Williston, ND





Verizon Cellular Plus Ribbon Cutting

The Sidney Area Chamber of Commerce and Agriculture hosted a ribbon cutting at Verizon Cellular Plus in Sidney last Thursday. The store opened in Sidney in 2010 and moved to its current location at 323 S. Central Ave. last October. Cellular Plus provides upgrades and new activations on Verizon phones with great customer service and problem solving. They also do internet connections and home phones. Pictured, L to R, are Chamber board member Karli Johnson, Wireless sales consultants Jocelyn Kittson, Kwin Redman and Kayla Flock; Chamber administrative assistant Katie Larson, Chamber board president Brandon Taylor, Chamber events coordinator Marissa Eberling, Cellular Plus store manager Cindy Gustafson and Wireless sales consultant Ashley Harris. Not pictured are Wireless sales consultants Samantha Miller and McKayla Asay.

Pesticide Points Announced for Sidney ARS Dryland Field Day

Submitted by Beth Redlin, USDA-ARS

The Sidney ARS Dryland Farm Field Day set for this coming Friday morning, June 19th, has been awarded 2 private and 2 commercial pesticide applicator points for those participating, organizers noted this week. The event is co-sponsored by the USDA Agricultural Research Service's (ARS) Northern Plains Agricultural Research Laboratory in Sidney and the Richland County Extension Service.

The Sidney ARS Field Day is set for Friday, June 19th from 9 am -12:30 pm, at the dryland research farm located about 4 miles north of Sidney on the Culbertson Highway. Take a left at County Road 129 and a second left on County Road 346 to get to the farm-site. A free lunch will be served courtesy of Richland County Extension. Rainplace is the Richland Co. Extension Office Conference Room at 1501 N. Central Ave. in Sidney.

A highlight of the morning is a special hour-long "Drones 101" workshop designed to acquaint tour goers with the basics of the machines. Other talks to be presented include information on E3 Farm Energy Audits, Biological control of Canada thistle, Drought influences on wheat stem sawfly outbreaks and control by its natural enemies, Attacking wheat stem sawfly inside the stem, Seeding depth and starter fertilizer for cover crop mixes, new large square baling software calculating RFV for alfalfa on the go, nitrogen rate impacts on greenhouse gas emission under a wheat pea rotation, and a special demonstration of a NRCS Rainfall Simulator.

For more information, contact Beth Redlin at 406-433-9427 or by email at beth.redlin@ars.usda.gov.

Summer Art Camps At The MDHC Throughout July

Creativity for kids of all ages! There will be four sessions this summer including: Session 1 – Teen Visionaries (ages 15-18), July 7-10th, 12 pm – 4pm • Session 2 – Prolific Preteens (ages 10 – 14), July 13-16th, 9 am – 12 pm • Session 3 – Clever Children (ages 6-9), July 20-23rd, 9 am – 12 pm • Session 4 – Unique Infants (ages 1-5), July 27-30th, 9 am- 10:30 am. A parent or guardian must accompany all children under the age of 6. Price is only \$35 per week, so call us at (406) 433-3500 to reserve your children's' spots today!

HAPPY FATHER'S DAY



2015 BUICK VERANO FWD

2.4L, 4CYL, 6-SPEED AUTO, CARBON BLACK. B6553.
MSRP: \$26,540.

**LEASE \$253/MO
39 MONTHS**

10K miles/year. \$1,715 due at signing
+ title, taxes & licensing.
O.A.C. See dealer for details.

2015 CHEVROLET CRUZE LT

1.4L 4CYL, AUTO, SUMMIT WHITE. C7029.
MSRP: \$21,700.

**LEASE \$189/MO.
36 MONTHS**

10K/year. O.A.C.
See dealer for details.

2014 BUICK ENCORE AWD

1.4L 4CYL, AUTO, LEATHER GROUP, RUBY RED. B6289.
MSRP: \$31,245.

**SALE PRICE
\$27,995**

O.A.C.
See dealer for details.

from



**SEE THESE SALES CONSULTANTS
FOR QUALITY CAR BUYS!**



Se Habla Español

Mark Waggoner is "The Credit Doctor"

**TAX TIME IS CAR TIME
YOUR JOB IS YOUR CREDIT
www.NDcreditDR.com**



1801 2nd Ave. W. Williston, ND Call 1-800-888-2927 or 701-577-2927 •Hours: Mon. 8am-6pm ; Tues.-Fri. 8am-6pm; Sat. 9am-5pm
www.murphymotors.com

We Will Be Closed, Friday, July 3th

So That Our Employees & Their Families May Enjoy The Holiday

The Roundup

We Apologize For Any Inconvenience This May Cause.

Director Of U.S. Agriculture Department's National Institute Of Food And Agriculture To Visit MSU In July

Submitted by MSU News

BOZEMAN - Sonny Ramaswamy, director of the U.S. Department of Agriculture's (USDA) National Institute of Food and Agriculture (NIFA), will visit Montana State University in July. Ramaswamy's visit includes a question and answer session that is free and open to the general public.

Ramaswamy's visit is hosted by the MSU Office of Research and Economic Development and the MSU College of Agriculture. It will include meetings with MSU faculty, who will share current research on pest management, soil, weeds, crops and livestock. Ramaswamy will also tour several MSU laboratories and meet with MSU students and research administrators. An hour-long question and answer session that is free and open to the general public, as well as to MSU students, faculty and staff, will be held Wednesday, July 29, at 1:15 p.m. in room 138 of the Animal Bioscience Building.

On Thursday, July 30, Ramaswamy will also visit Little Big Horn College in Crow Agency, where he will speak with faculty and administrators. Like MSU, Little Big Horn College is a land-grant institution, and the two institutions partner with NIFA on issues related to food, agriculture, natural resources and human sciences.

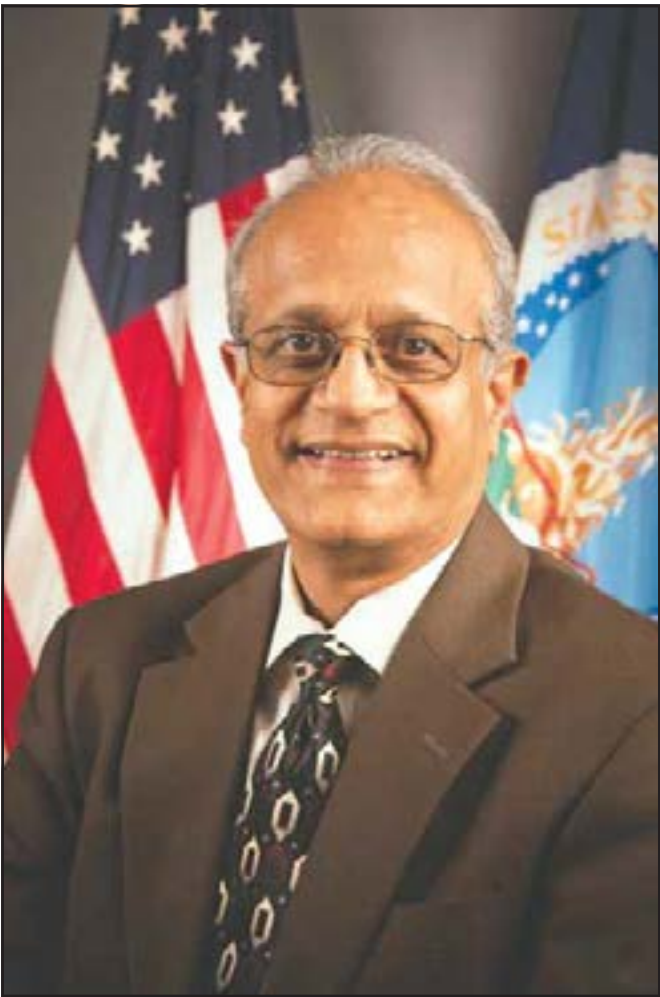
"We are pleased to welcome Dr. Ramaswamy to our campus this summer and share our agriculture research and growing research profile with our tribal land-grant colleagues," said Charles Boyer, MSU vice president of agriculture. "As an agriculture college, we are committed to addressing challenges associated with feeding the world in the 21st century; support from USDA and NIFA is a critical component in being able to deliver cutting-edge agricultural research."

During his visit, Ramaswamy will take a tour of the Missouri River headwaters and learn about water resources and availability, as well as the impacts of tourism. He will also learn about MSU research in targeted grazing and reducing tillage, integrated pest management, sustainable foods, antibiotic resistant pathogens and zoonotic diseases.

"Our nation's success in addressing the 21st century challenge of ensuring food security is linked directly to the research, education and Extension work of our partner institutions, and the time I spend on the ground learning about their accomplishments is invaluable," Ramaswamy said. "Montana State University is a critical partner to NIFA in addressing global food security challenges, and I am eager to see the work (the university is) doing to find solutions to climate change, drought and food production."

Ramaswamy's visit follows a meeting by the world's top experts in food production and security held in Bozeman earlier this spring, when MSU hosted the United States Agency for International Development's (USAID) Board for International Food and Agricultural Development (BIFAD), of which MSU President Waded Cruzado is a board member. BIFAD members spoke with MSU faculty and students on topics such as global food security and hunger, poverty, enhanced nutrition, natural resources and agriculture research.

At NIFA, Ramaswamy oversees funds for a wide range of research, education and extension projects that address needs of American farmers, ranchers and agricultural producers. He has published



Sonny Ramaswamy, director of the U.S. Department of Agriculture's (USDA) National Institute of Food and Agriculture (NIFA), will visit Montana State University in July. Photo courtesy of Sonny Ramaswamy.

more than 150 journal articles, book chapters, and a book and has received myriad awards as a scientist and department head. Those awards include being named a fellow of the American Association for the Advancement of Science, a fellow of the Entomological Society of America, and a distinguished graduate alumnus of Cook College, Rutgers University.

In 2012, President Barack Obama appointed Ramaswamy to serve as the director of NIFA. Prior to joining NIFA, Ramaswamy served as dean of Oregon State University's College of Agricultural Sciences and director of the Oregon Agricultural Experiment Station. He previously was associate dean of the Purdue University College of Agriculture, where he directed the university's agricultural research programs from 2006 to 2009. Prior to joining the Purdue faculty, he was head of Kansas State University's Department of Entomology and served as faculty with Mississippi State University and as a research associate at Michigan State University.

For more information on Ramaswamy's visit, contact the MSU Office of Research and Economic Development at 994-2891.

MNAXLP

County Agent Update

By Danielle Steinhoff, Agriculture and Natural Resources Agent Williams County

Fair Season

Every summer North Dakota counties have a county fairs. One thing that you see at the majority of fairs is kids with their projects or livestock. An interest in Agriculture can start at a young age for some, whether they grow up on a farm or ranch or learn about it in a class. June 24th-28th is the Williams County fair, this is the time for the kids to shine. At the Williams County fair we have static exhibits, which will include sewing, baking, welding, horticulture, crop production and many more. Starting as young as 5, 4-H members are able to learn life long, the fair is the time to show off their projects that they have worked on all year round.

The other part of the fair is the livestock, members that are showing livestock can range from 5 to 19 years old. Through months of work, sweat, blood and maybe even tears comes the time for them to shine. At the Upper Missouri Valley Fair we have cattle, sheep, goats, swine and rabbits. With the halt on bird movements because of the bird flu, we canceled the poultry show this year. Those that show cattle sometimes pick out their animals once they are born, the rest of the animals are not long there afterwards. Part of the 4-H experience is learning responsibility, the 4-H members are in charge of feeding, watering and general maintenance of these animals for months. Over those months, the members have to halter break steers, shave sheep and swine, and learn showmanship techniques and skills. I mentioned the responsibility factor previously, but leadership, strength, problem solving, and independence are also skills members will learn.

Watching youth be passionate about something like livestock, or one of the many static projects is a wondering site.

Having visitors to the shows and the barn stalls is something that the 4-H program looks forward to. So come on out to the fair, be ready to watch some of Williams County youth show off their hard work.

Project Safe Send

Coming up the last two weeks of July will be Project Safe Send. This program is for pesticide disposal for farmers, ranchers, pesticide dealers and applicators, government agencies, homeowners and the general public. This program accepts any pesticides; herbicides, insecticides, rodenticides and fungicides, that are old, unusable or banned in the state. This program is free, the funds are fees paid by pesticides manufacturers to register their product in North Dakota.

If the containers the pesticides are in are deteriorating or leaking, pack them in a larger container and add absorbent materials, such as cat litter. There is no need to preregister unless you are bringing more than 1,000 pounds, if you are please register 5 days in advances at 800-242-7535 or 701-329-2231. Please note: fertilizers, surfactants, adjuvants, pesticide rinsate, empty containers or containers of paints or oil are not accepted at collection sites.

2015 Collection dates and sites that are close to Williams County are listed below, all of them at 9a.m.- 3p.m. local time

Thursday, July 16: Center- 3738 Hwy 25
Friday, July 17: Flasher- 6590 Co. Road 84
Monday, July 20: New England- 11704 61 St SW
Tuesday, July 21: Parshall- 7198 38th St NW
Wednesday, July 22: Kenmare- 49501 422 Ave NW

All of these locations are North Dakota Department of Transportation facilities



Yellowstone Chiropractic Clinic
(406)-433-4757 222 2nd. Ave. SW
1-866-433-4757 Sidney, MT 59270

Dr. Ryan Laqua
Chiropractic Physician &
Certified Medical Examiner



• Sports Injuries • DOT Physicals
• Personal Injuries & Pain Conditions

DEMOLITION DERBY

Friday, July 10, 2015 at 6pm CST
Pit Gates Open at 2pm CST

1 st Place.....	\$2,500
2 nd Place	\$1,200
3 rd Place.....	\$850



\$100 Entry Fee (Includes Driver and 1 Pitman)
\$15 For Each Addition Pitman

Settle It In The Mud
\$100 Per Heat Winner • \$50 Per Consolation
Pickup Derby
1 Heat Only • Held Before Main Feature • Payout: All Entry Fees + \$1,000

For Car tech questions, contact Cody at: 701-368-0072
For rules and entry info, contact Carolyn at: 701-675-2306 or levang4@ruggedwest.com

Destination
SUMMER FUN!

The Richland County Tavern Association would like to wish everyone a fun & safe summer!

Please Don't Drink & Drive...Call for a Ride!

We Support The Sidney Shuttle: 406-433-3636

RCTA

Richland County Tavern Association

Cattle-Ac • Cheerio Lounge • Club Royale • Club Tavern
Double Barrel Saloon • Elks Lodge • Lucky Lil's
Ranger Lounge • Sidney Liquor • South 40
Winner's Pub • VFW Club • Waterhole #3

IT'S AMERICA'S BIRTHDAY

AND YOU GET THE PRESENT!

REGISTER TO WIN A

\$100

GIFT CARD

DRAWING HELD JULY 3

Make Sure You're Ready For The Weekend:

- Fishing & Camping Supplies
- Clothing • Footwear

We Will Be Closed July 4 & 5



Mon-Sat: 9am - 6pm • Sun: 10am - 4pm
440 N Central Ave • Sidney, MT
Shops at Fox Run • 406-433-1800

'T FREE! WE SUPPORT OUR TROOPS! FREEDOM ISN'T FREE! WE SUPPORT OUR TROOPS
 Saturday, June 27TH, Is National
— POST TRAUMATIC —
STRESS DISORDER DAY

The NILE Foundation would like to thank everyone involved and especially those who gave donations. Questions, please contact the NILE Office (406) 256-2495

It's time for Congress to step in and check EPA's blatant overreach. Farmers and ranchers know the importance of protecting water resources. Federal rules should let them continue taking care of the land while producing our food, fiber and renewable energy.

WOOD GROUP

