

# The Roundup

Phone (406) 433-3306  
Fax (406) 433-4114  
E-mail address:  
[info@roundupweb.com](mailto:info@roundupweb.com)  
[www.roundupweb.com](http://www.roundupweb.com)

Business Office:  
Located at 111 West Main  
Sidney, MT

Mailing Address:  
P.O. Box 1207  
Sidney, MT 59270

PRSR STD  
U.S.  
POSTAGE  
PAID  
The Roundup  
  
ECRWSS  
Postal Customer

Wednesday, November 1, 2017

Volume 43 • Number 38

## MonDak Ag Research Summit Scheduled for November 15th

By Anna Dragseth

On Wednesday, November 15th, the MonDak Ag Research Summit will be held at the Richland County Event Center located in Sidney. The event will start at 9:00am MST and end at 3:00 pm MST. It will feature MonDak area agricultural researchers from the North Dakota Williston Research Extension Center, Montana Eastern Agricultural Research Center, and the USDA Agricultural Research Service.

The Summit's purpose is to highlight current research projects and results from local agricultural research centers. The presentations will highlight management strategies that can save both dryland and irrigated growers time and money. The program will include updates on projects investigating wheat and sugarbeet diseases, noxious weeds, insect pests, cropping systems, crop varieties, high-tunnel vegetable production, and grasshopper outbreaks.

Participants will have several opportunities to interact directly with scientists. There will be small group discussions in the afternoon and informal conversations throughout the event during lunch breaks and poster sessions. Local producers will have the opportunity to learn from each other and share thoughts on managing diseases, weeds, and crop rotations. Researchers want to connect with local producers and hear about problems they are facing, observations they may have, and suggestions for future research. Participants will also earn 2 Montana pesticide applicator points and 1.5 Certified Crop Advisor CEU's for attending.

All three state and federal institutions have the expertise to research every crop grown in the region, soils, diseases, pests, and much more. All producers, industry representatives, extension educators, research staff, and anyone interested in learning about agricultural research in the MonDak area are encouraged to attend.

A free lunch sponsored by the Northern Pulse Growers Association will be served at 12:30 pm.

Please pre-register on-line at <https://tinyurl.com/y9b218xs>. To register by phone or if you have questions, call Beth Redlin at 406-433-2020. Pre-registration is free and will enter you for a chance to win a set of collectible model tractors donated by T&E of Williston. As an additional incentive to pre-register, the first 50 people to pre-register will receive a weatherproof cell phone pouch and a water bottle. Pre-registration closes November 8th.

## Winner's Pub Celebrates 20 Years This Weekend

By Dianne Swanson

The Winner's Pub in Sidney has been a destination for sports fans and gamers for 20 years.

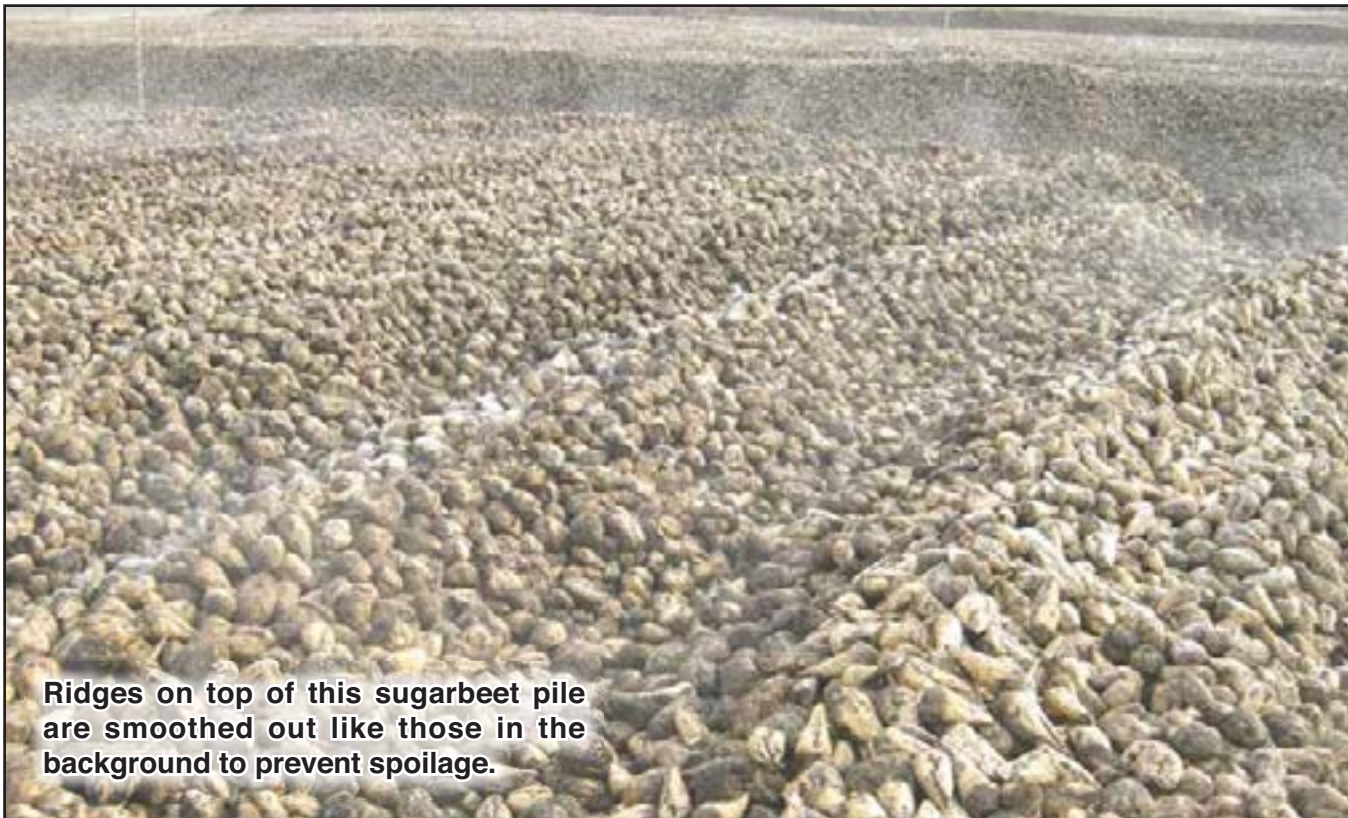
Started in 1997 by Arnie and Lola Hansen at 120 South Central, the Pub features gaming machines, big screen TVs and sports memorabilia from the area. It soon became the popular place to go for sports fans wishing to watch the games on TV, or hash out the night's win or loss. The pictures and articles covering the walls and table tops detail the area's sports history from way back, and new ones are added periodically.

In 2005, The Pub moved to its current location at 804 S. Central where the larger space allowed for more big screen TVs, gaming machines, better parking, and more guest space in both the bar and casino.

Now under the management of Hansen's son-in-law Ray Johnson, the Winner's Pub continues to welcome the latest

Continued on page 3A.

## Preserving Sugar Beets Through Campaign



Ridges on top of this sugarbeet pile are smoothed out like those in the background to prevent spoilage.



Forced air ventilation helps preserve the beets during campaign.

By Dianne Swanson

It's a bit unusual to see a Sno Cat driving on top of a huge pile of sugar beets, but Richard Albin was doing just that last week at the Sugar Valley station, Fairview. Now that beet harvest is complete, the goal at Sidney Sugars is to keep those beets at their optimum quality until all the processing is done, about mid-February.

The science of storage has been studied extensively by Kelly Thomas, plant physiologist/genetics with American Crystal. Through years of study, Thomas has documented the activity in beet piles and how storage can be improved. During harvest, the pilers create ridges at the top, creating a chimney effect which creates hot spots when the beets respire.

In 1992, Roger Hill, president of Sidney Sugars, Don Lind, Sidney factory manager, Dave Melin agricultural manager and Albin devised a plan to even out the ridges to better preserve the beets. Albin uses a Bombardier 350 h.p. Sno Cat with a 14' blade to level the tops of the beet piles in the Sidney Sugars growing area. He was headed to Savage next and possibly on to Billings. He's leveled beet piles as far away as Greely, CO and is on his 5th machine. He enjoys the work and says, "I'd be plowing snow in Red Lodge this winter if I didn't have cattle to feed every day." He will also plow snow off the beet piles this winter if needed.

Sidney Sugars also uses passive and forced air ventilation to cool the beets. This year 72,000 tons are under passive



Richard Albin stands beside his Sno Cat after completing work at the Sugar Valley station.

ventilation with another 95,000 in Fairview and Sidney under forced air, which is a huge increase from last year. The goal is to give the beets a good chill, but not freeze, so fans are run at certain temperature ranges. Agriculturalists Kathryn Cayko at Sugar Valley and Vanessa Pooch at the factory yard are on call 24/7. They both set alarms to alert them if the temperature gets too warm and they have to get the fans turned on, even if it's at 2 a.m. That regimen typically lasts until December, or the first good snow fall, or when the temperature hits 0 degrees. "The beets store really well with the cold air from the first few months," Cayko said.

Sidney Sugars flies the piles and uses an infrared camera to capture the temperature of the beets. This year they will also utilize a company out of Watford City that employs drones. The fly-overs show a dramatic difference in the temperature of the beets with forced air ventilation, and they also show any trouble spots that may need to be dealt with. Depending on the results, Sidney Sugars hopes to do more with drones in the future. The first test will take place next week with fly-overs continuing once a month through campaign.

Final results are in for this year's harvest with 31.2 tonnage and 17.99 sugar. All beets have been hauled from the Culbertson area and Powder River should be completed next week. Non-vented beets should be at the factory by mid to late January followed by passive, then forced air ventilated beets.

## Sidney Mayoral Forum Held Oct. 24, Election Nov. 7

By Jordan Hall

More than 140 people gathered for a mayoral forum at the Richland County Extension Office on Tuesday, October 24. Hosted by the Sidney Area Chamber of Commerce and Agriculture, the three mayoral candidates partook in the final of three such forums designed to give voters a better view of their options this election cycle.

Brad Faulhaber, history and government teacher at Sidney High School, asked questions on behalf of the Chamber, some of which were provided by high school students.

Among a whole barrage of questions posited during the evening, each candidate was asked to speak to the topic of drug and alcohol abuse and what they, as the mayor, could do to help the problem.

Norby answered with certainty, "I am one who can speak on behalf of this, because I've budgeted for this the last four years. Some have accused me of showing favoritism to the police department, and I probably have, because I want to see it fully staffed...I believe that the police department and sheriff's department are working together."

Everett answered the question regarding drugs and alcohol by responding, "Kindergarten is not too young to start educating children about the dangers of drugs and alcohol. The saying that it takes a village to raise a child is certainly true....As far as the police department is concerned, I haven't looked up the numbers. As long as [the police] feel that they have tools and training necessary they need, we can help."

Asked if they would be willing to cut the budget and how they would make such decisions, Norby responded with char-

acteristic specificity, "We already went through a year where we had to make major cuts. We had to cut 350 thousand dollars out of our budget, and we'll have to do the same thing next year. We have to move employees where they need to be. Anything that we lacked was in the general fund. Anything that we can cut coming out of the general fund, we already have. Moving forward, starting an ice and snow district will help so it won't have to come from the general fund."

Everett didn't have a specific answer to that question, explaining, "I can't pretend to understand the city budget. I have not personally looked at it. Before making any decisions I like to gather information to be as knowledgeable as possible."

Debra Gilbert said, "The first thing I would do is listen to the voice of the employee...I would order and prioritize the projects and evaluate the projects and the resources. We would have to - at that point - we would have to do the documentation and follow the protocol we have in place."

When asked how they would build cooperation with other groups, Everett answered, "I think communication is key and positive relationships. Teamwork makes the train work."

Gilbert answered, "Well there are plenty of boards out there. We've got the Board of Health, the Kiwanis and Lions, and you've got all sorts of places to go."

"When I became mayor in 2014," Norby said in response, "The first thing I did was sit down and meet with economic development and the Chamber, places like that to see where it was, and it wasn't good...To me, it's involvement and involving every person around you so they know what you're doing and you know what they're doing...Getting to know people and what

they need is the biggest thing to me. I go to their meetings, and they go to my meetings. You get more accomplished that way."

The jovial mood between the candidates seemed temporarily halted when asked how to recruit and retain quality professional staff in the city office.

Gilbert said, "I feel for the treasurer position, you really need someone with an accounting background...when you have one person doing two jobs, I don't feel that person can do it to the best of their ability. So, I think trying to recruit professional staff is difficult. You will probably have to train them. You will probably have to pay them a little bit more."

Norby responded forcefully, "Actually, it's a very good question. It's always an issue that City Hall has taken a beating over the last several years. In my honest opinion, I have professional staff. I wouldn't want to spend one single day spending taxpayer dollars without having the people around me I do have around me. I got a gentleman here with 35 years of experience whose knowledge I have and I can count on. I have a public works director of ten years, and a lady doing two positions, but if I'm going to have to pay an accountant 35 dollars an hour, where do you get the money to do that? I got somebody doing a way better job than any accountant can do it...to me, I really take it personal and I'm criticized for it, because you can't find anyone better for the positions than the people we now have."

"I believe in people. I believe in their abilities," Everett answered simply. "I believe in everyone having the tools they need to do the best jobs they can. I believe in everyone becoming the best versions of themselves they can."





**Janet Sergent**  
Real Estate  
Loan Officer  
NMLS ID# 525727

**REAL ESTATE FINANCING**  
For Home Purchases & Refinancing  
Stop in today and see Janet Sergent in Sidney



**Richland**  
FEDERAL CREDIT UNION

www.richlandfcu.com  
201 West Holly St. • Sidney, MT (406) 482-2704  
18 East 2nd St. Culbertson, MT (406) 787-5890



**MODEL DRIVE-IN CLEANERS**  
SCIENTIFIC "ODORLESS" CLEANING

**Pickup And Delivery Dates:**  
**Sidney: Mon & Thurs**  
**Watford City: Wed & Sat**

Serving Watford City At Meyer's Department Store  
200 N Main • 701-444-2906 | Mon-Fri: 10am - 6pm • Sat: 10am - 5pm

Serving Sidney At Big Sky Embroidery And Design  
108 E Main • 406-433-7679 | Mon-Fri: 10am - 5pm

**DRY CLEANING | SHIRTS & JEANS STARCH | WELDERS STARCH**  
1129 2nd Ave W • Williston, ND | 701-572-3734 | www.willistondrycleaners.com  
Mon-Fri: 8am - 6pm • Sat: 9am - 3pm




**Michele Herres**  
Agent

**State Farm**  
Providing Insurance and Financial Services

**AUTO • HOME  
LIFE • BANK  
HEALTH • BUSINESS**

216 S Central Ave • Sidney, MT 59270  
Bus: 406-488-2400 • Fax: 406-488-2405  
michele@herresinsurance.com


MT Lic 26-03A1  
ND Lic 34-03A1




**UNION GATEWAY AGENCY**  
*Your Insurance Team  
Independently  
Representing:*

~Life  
~Health  
~Medicare Supplement  
~Medicare Part D  
~Group Health  
~Vision  
~Dental  
~Long Term Care


309 2<sup>nd</sup> St NW  
Sidney MT 59270  
phone 406-488-4366  
fax 406-630-4433



**BlueCross BlueShield  
of Montana**



**Aflac**



**vsp**  
Vision care for life

©2011 Vision Service Plan. All rights reserved. VSP and Vision care for life are registered trademarks of Vision Service Plan.

**Vendor's  
Showcase!**  
**Thurs - Sat, Nov 2 - 4**



**Reidel • Shun Knives**  
**Jura Coffee/Espresso Makers**  
*Come see what's new!*



**COOKS ON MAIN**  
*for the everyday chef*  
Mon - Fri: 10am - 8pm • Sat: 9am - 6pm • Sun: 1-5pm  
Check us out at [www.cooks-on-main.com](http://www.cooks-on-main.com) or visit us on facebook  
701-572-COOK (2665) • (F) 701-572-2666 | 224 Main Street • Williston, ND

**Check Us Out Weekly With:**



**Monthly With:**

**Or Online At:**



**STATISTICS**

**LAKE WATER LEVEL REPORT**

			<b>Sakakawea</b>
Current Elevation.....	1841.7		
Last Week's Elev. ....	1841.4		
One Year Ago .....	1839.0		
Release For Day (C.F.S.) .....	15,000		

**SIDNEY WEATHER DATA**

Source: MSU Eastern Agricultural Research Center

Date	High	Low	Precip.
October 23.....	58.....	38.....	0.00
October 24.....	65.....	28.....	0.00
October 25.....	76.....	38.....	0.00
October 26.....	51.....	20.....	0.00
October 27.....	49.....	14.....	0.00
October 28.....	64.....	23.....	0.00
October 29.....	53.....	30.....	0.00
Total YTD Precipitation.....	7.97		

# OBITUARIES

## Lois Dynneson Olsen, 83 Sidney, MT

Funeral services for Lois Dynneson Olsen, 83, of Sidney are at 10 a.m., Wednesday, November 1 at Pella Lutheran Church in Sidney with Pastor Joel Westby officiating.

Interment will be in the Sidney Cemetery, Sidney, MT under the direction of Fulkerson-Stevenson Funeral Home of Sidney.

Remembrances, condolences and pictures may be shared with the family at [www.fulkersons.com](http://www.fulkersons.com).

Lois died on Friday evening, October 27 at her home surrounded by her family.

## Orvin Finsaas, 78 E. Fairview, ND

Funeral services for Orvin Finsaas, 78, of East Fairview are at 2 p.m., Friday, November 3 at East Fairview School Gymnasium with Pastor Sheldon McGorman of Assembly of God Church of Watford City, ND officiating.

Interment will be in the Fairview Cemetery, Fairview, ND under the direction of Fulkerson-Stevenson Funeral Home of Sidney.

Remembrances, condolences and pictures may be shared with the family at [www.fulkersons.com](http://www.fulkersons.com).

Orvin died on Saturday evening, October 28 at Sidney Health Center, Sidney, MT.

## Sarah Phyllis Petersen, 96 Sidney, MT

Funeral service for Sarah Phyllis Petersen, 96, of Sidney, MT was at 10 a.m., Tuesday, October 31 at People's Congregational Church with Pastor Neil Lindorff officiating.

Interment in Richland Memorial Park Cemetery under the direction of Fulkerson-Stevenson Funeral Home of Sidney.

Remembrances, pictures and condolences may be shared with the family at [www.fulkersons.com](http://www.fulkersons.com).

Phyllis died at Sidney Health Center Extended Care Facility on October 25.

## John Leo Rassier, 65 Sidney, MT

Mass of the Christian Burial for John Leo Rassier, 65, of Sidney is at 11 a.m., Thursday, November 2 at St. Matthew's Catholic Church in Sidney with Fr. Jim O'Neil as presider.

Family will be receiving friends on Wednesday, November 1 from 2-8 p.m. at Fulkerson-Stevenson Funeral Home.

Wake services are at 6 p.m., Wednesday, November 1 at Fulkerson-Stevenson Funeral Home.

Interment will be at 2 p.m., Saturday, November 4 in St. Mary's Catholic Cemetery, Melrose, MN under the direction of Fulkerson-Stevenson Funeral Home of Sidney.

Remembrances, condolences and pictures may be shared with the family at [www.fulkersons.com](http://www.fulkersons.com).

John died on Friday evening, October 27 at Sidney Sugars, Sidney, MT.

## Healthy Smiles Dental and Orthodontics Veterans Day Special

Healthy Smiles Dental and Orthodontics will be have a Veterans Day special on Thursday, Nov. 9. There will be free cleanings and exams for all veterans. Please call 406-433-7645 to set up your appointment today. Healthy Smiles is located at 203 2nd Ave. SW in Sidney.

## Change Your Impact Series Part 4: TIU, LIU

## Financial Burden

**By Richland County Partnership For Promise Coalition**

Underage drinking is a problem that costs Montanans significant financial burden each year. In 2013, it cost \$0.3 billion! That's \$300 million tax dollars "spent on medical care, work loss, and pain and suffering associated with the multiple problems resulting from the use of alcohol by youth." Taylor DM, Miller TR. (2015). Methodology: Underage Drinking Fact Sheets. These costs also include criminal justice expenses and property damage expenses.

To put this cost into perspective: at most local drinking establishments or bars, an adult can easily pay \$3.75 - \$5.00 for a single drink. Underage youth are more likely to drink beer though. Purchased beer from a retail store is around \$.86 per can. However, according to Taylor and Miller's reports, for each drink consumed underage, \$4.20 of tax dollars are spent by the state to combat the results of underage drinking.

Still, adults in our community often overlook the financial consequences and personal problems caused by youth drinking alcohol.

According to the document Underage Drinking In Montana: The Facts (2013), there is great harm associated with underage drinking in Montana. Traffic crashes, violent crime (which includes: rape, robbery, and assault), property crime, unintentional injury (includes fatal burns, drowning, and suicide), and high-risk sex are the main harms that are attributed to underage drinking.

Whether an adult knowingly allows youth to drink in their homes or takes no steps to prevent it, adults need to know that they are contributing to the hardships those youth may face. These choices, to provide and to allow underage youth access alcohol in their home, put a burden on our community and state in dealing with the aftermath of underage drinking.

Challenge yourself to Talk It UP & Lock It Up. Talk to youth about what this information means to you and take precautions by counting and locking up your alcohol. It is that simple to make positive impacts on Richland County youth! Send your comments to the Editor to further this conversation.

Next time: Change Your Impact Series, Part 5, A Youth's Perspective

MNAXLP



**SEND US YOUR EVENTS!**  
THE ROUNDUP: PO Box 1207  
111 West Main • Sidney, MT 59270  
406-433-3306 • Fax: 406-433-4114 • Email: [classads@esidney.com](mailto:classads@esidney.com)

**RICHLAND COUNTY**  
**Events in Sidney unless otherwise listed. MT Zone.**  
**Thurs., Nov. 2**  
7 p.m. - **Cascade Quartet Concert** - Tickets available at the door, \$15/adults/\$13 seniors/\$10 students. MonDak Heritage Center, 120 3rd Ave., SE, Sidney, MT.  
**Sat., Nov. 4**  
7-10 p.m. - **Wine & Food Festival** - Wine and food pairings highlighting local restaurants and silent auction, exclusive artwork and experiences. Admission: \$75 per ticket available for purchase at the Foundation for Community Care or by calling 406-488-2273. No tickets sold the night of the event. Stockman Bank Upper Level, 301 W Holly Street, Sidney, MT.  
**Sun., Nov. 5**  
5 p.m. - **Casual! Contemporary! Conversation!** - Join our weekly group for a casual gathering with contemporary music, a discussion of scripture and communion and children's activities offered as needed. Everyone welcome. For more information call the church, 433-3110 or Pastor Melanie Martin-Dent, 406-560-6371. Lonsdale United Methodist Church, Sidney, MT.  
**Tues., Nov. 7**  
6 p.m. - **REDC Annual Meeting Banquet** - The evening will entail an overview of 2017 activities and a great meal. Sidney Elks Lodge. Mail or fax your RSVP as soon as possible.  
**Thurs., Nov. 9**  
**Free Dental Cleanings And Exams For Veterans** - Call 406-433-7645 to schedule an appointment. Healthy Smiles Dental & Orthodontics, 203 2nd Ave. SW, Sidney, MT.  
**Sat., Nov. 11**  
9 a.m. - 2 p.m. - **Fall Bazaar & Bake Sale** - Cinnamon rolls, soup, sandwiches, pie, coffee, baked goods and gift baskets. Shepherd of the Valley Lutheran Church, 211 East Holly, Sidney, MT.  
5-8 p.m. - **Richland County Sportsmen's Club, Inc. Shooting Range Fundraiser** - Great family fun. Free taco feed, bowling and shoes. Dutch auction, silent auction, door prizes for kids, ladies and mens gifts, gun raffle, food gift certificate drawings for veterans only. OK Lanes, 173 Miller Street, Sidney, MT.  
**Sun., Nov. 12**  
11 a.m.-2 p.m. - **St. Theresa's Fall Dinner** - Turkey and all the trimmings, salads and pies. Free will donation. Lambert School Multi-Purpose Room, Lambert, MT.  
**Wed., Nov. 15**  
9 a.m.-3 p.m. - **MonDak Ag Research Summit** - A free event to learn about research relevant for your operation. Crop diseases, wheat stem sawfly/invasive weeds; dryland and irrigated cropping systems, pulse crops, small grain varieties for irrigated and dryland production and more. Richland County Event Center, Sidney, MT. Register by Nov. 8 at <https://tinyurl.com/y9b218xs> or contact Beth Redlin at [beth.redin@ars.usda.gov](mailto:beth.redin@ars.usda.gov), 406-433-2020.  
**Thurs., Nov. 16**  
5 p.m. - **East Fairview School Chili & Turkey Bingo** - Chili will be served at 5 p.m., \$5/person. Bingo starts at 6 p.m. Prizes include 20 turkeys, \$50 blackout, 50/50 drawing and more. East Fairview School Gym.  
**Sat., Nov. 18**  
6 p.m. - **Meat Madness** - Social, 6 p.m., supper, 6:30 p.m. Live music by Stumbling Free, 7-11 p.m., live and silent auction. Tickets \$40 and can be purchased at Central Elementary, John Stockhill Jewelers, Sidney Area of Commerce and Agriculture and Stockman Bank. All proceeds going toward construction of restrooms and concession facility on the North side of Swanson Field at SHS. Richland County Event Center, Sidney, MT.

**ROOSEVELT COUNTY**  
**Events in Froid unless otherwise listed. CT Zone**  
**Sat., Nov. 4**  
12 p.m. - **Northeast Montana Land & Mineral Owners Association Meeting** - Lunch at 12 p.m., meeting starts at 1 p.m. An election will be held for 2 directors' positions, Butch Michels and Dennis Trudell. Community Center, Froid, MT.

**McKENZIE COUNTY**  
**Events in Watford City unless otherwise listed. CT Zone**  
**Sat., Nov. 4**  
10 a.m.-4 p.m. - **Winter Coat Drive** - Winter warm up/coat donation multi-vendor show. All adult and children's coats will be donated to Oil Rush Ministry. Watford City Civic Center Gym, Watford City, ND.  
**Tues., Nov. 7**  
5-7 p.m. - **McKenzie County Skills Initiative** - Hear about career, workforce and business development efforts from area institutions in Watford City. For more information contact Daniel Stenberg, 701-444-7419. Rough Rider Center, 2209 Wolves Den parkway, Watford City, ND.  
**Tues., Nov. 14**  
5 p.m. - **Turkey Bingo** - The local 4-H will be having their soup and sandwich fundraiser starting at 5 p.m. as well as a bake sale prior to Bingo. Bingo will start at 6:30 p.m. \$1 per card. Middle School Commons Area, Watford City, ND.  
**Thurs., Nov. 16**  
5:30-7:30 p.m. - **Explore Art Community Classes (Gouache)** - Gouache paint is similar to watercolors, but is opaque, which allows for different techniques. Supplies included with your \$59 per class registration fee. Portion of proceeds benefit Long X Arts Foundation. Rough Rider Center, Watford City, ND. To register call 701-572-2835.

**WILLIAMS COUNTY**  
**Events in Williston unless otherwise listed. CT Zone.**  
**Fri., Nov. 3**  
6 p.m. - **Introduction of Miss America 2018 & Coronation of Miss North Dakota 2017** - Bakken Auditorium - Following this ceremony a public reception will be held at 7:30 p.m. in the Phil Jackson Fieldhouse. Tickets: \$10/adult; \$5/students. To purchase tickets visit [missnorthdakota.org](http://missnorthdakota.org), in person at the Williston Visitor's Center, or at the event.  
**Sat., Nov. 4**  
9 a.m.-4 p.m. - **Scrapbooking** - Participants should bring their own materials and lunch. Missouri-Yellowstone Confluence Interpretive Center. 701-572-9034.  
**Sun., Nov. 5**  
3 p.m. - **Sunrise Brass Concert** - Free admission. Missouri-Yellowstone Confluence Interpretive Center. 701-572-9034.  
**Fri., Nov. 10**  
5 p.m. - **2017 Charity Ball - Deuces Wild Dueling Pianos** - Dinner and dessert, silent and live auctions, cocktails, dancing. Grand Williston Hotel, 3601 2nd Ave. West, Williston, ND.  
6-11:30 p.m. - **Vet's Fest** - Admission, free will donation of food or money for this local veterans benefit. Learn more about available local services from area Veteran Service Groups. People's choice chicken wing voting from 6:30-8 p.m., cash bar, music by Jade's Agenda, Harley-Davidson Fashion Show and more. Black Magic Harley-Davidson, 6611 2nd Ave. West, Williston, ND. For more information contact Kim Schmaltz, 701-572-1798.

**DAWSON COUNTY**  
**Events in Glendive unless otherwise listed. MT Zone**  
**Wed., Nov. 1**  
5-7 p.m. - **Annual Roast Beef Dinner** - Glendive United Methodist Church, 206 W. Towne St., Glendive, MT. Tickets available at the church office or at the door.  
**Sat., Nov. 11**  
10 a.m. - **Glendive Cancer Support Group** - Survivors and caregivers welcome. GMC Canary Center, 202 Prospect Dr., Glendive, MT. 406-377-4639.  
7:30 p.m. - **3 Redneck Tenors Concert** - DCHS, 900 N. Merrill, Ave., Glendive, MT. For more information contact Bruce Peterson, 406-377-5846 or [emca.pres@gmail.com](mailto:emca.pres@gmail.com).  
**Wed., Nov. 15**  
12-1 p.m. - **October Lunch 'n' Learn** - Join Dave Steiner for "Enhancing Porches and Entryways for the Holidays." Dave will demonstrate several great holiday ideas for your homes front entrance. Tea and coffee provided, bring your own lunch. Glendive Public Library Community Room. For more information visit <http://tinyurl.com/prgkapr>.



## Winner's Pub Celebrates 20 Years...

Continued from page 1A.

technology to enhance its customer experience. Sounddog speakers on each table let the fans select a game and listen to it individually. The Sounddog app may also be downloaded to a mobile device for listening pleasure. With 22 big screen TVs and lots of sports packages including NFL Sunday Ticket, customers are able to watch every football game including the Bobcats, Grizzlies and Bison.

The Pub welcomes coaches and fans with free appetizers after every Sidney Eagle weekend home game and supports local sports activities including contributing to the new scoreboard at Swanson Field.

Winner's Pub also has loyalty program where members can earn points with every purchase as well as receive different

promotional offers to keep customers coming back. The Gaming Club rewards players and offers up match plays coupons of \$5 and \$10 as well as other random prize drawings.

A new menu has just been launched with the most popular items still available and tasty new items added such as signature shredded beef nachos, chicken fried steak sandwich, fried pickles, fried Twinkies and several other new items to choose from. The full menu is available until 2 a.m. and takeout orders are always welcome. You can even have a steak delivered from the South 40 while watching your game.

Johnson appreciates all the employees who make the Winner's Pub a fun place to go. He feels fortunate to have someone as loyal as Kevin Johnson who celebrates 20 years at the Pub this Sunday. Traci Berglund has also been a dedicated employee with 18 years of service and the remainder of their capable employees includes Katie Zadow, Kassie Klein, Jennifer Warner and Chase Hall. "They're all good employees and we encourage everyone to come in and visit with them," Johnson said.

For current information on the Pub's activities, visit [www.winnerspubsidney.com](http://www.winnerspubsidney.com) or check them out on Facebook.

Be sure to stop by The Winner's Pub this weekend and enjoy some 20th Anniversary fun and specials.



Eight of the 22 big screen TVs with sports action at the Winner's Pub.

## Bring This Coupon In For An Oil Change

Includes:

- Labor • Oil Filter
- Up to 8 Quarts of Synthetic Oil
- Windshield Washer Fluid
- Top-off
- 27 Multipoint Inspection
- All Makes & Models

**\$34.95\***  
Expires 12-31-17

**CERTIFIED SERVICE**  
Regular Price \$39.95

\*SEE DEALER FOR DETAILS. OIL CHANGE PRICE EXCLUDES DIESEL ENGINES

BUICK

CHEVROLET

GMC

CERTIFIED SERVICE

**Gem City MOTORS**

703 S. CENTRAL • SIDNEY, MT | [WWW.GEMCITYMOTORS.COM](http://WWW.GEMCITYMOTORS.COM) | 406-433-3120

## Be Prepared For Winter With A REMOTE CAR STARTER

Start Your Vehicle  
With Just the Push  
of a Button From  
the Comfort of Your  
Home or Office

We Install On All  
Makes & Models!\*



**Gem City MOTORS**

703 S. Central • Sidney, MT | [www.gemcitymotors.com](http://www.gemcitymotors.com) | 406-433-3120

\*See Dealer For Details.

2017  
**Direct Sellers**  
FALL SHOWCASE

Richland County Fair Event Center • Sidney, Montana

**Companies Represented:**

Arbonne, Avon, Beachbody, Damsel in Defense, doTERRA, Gold Canyon, Jamberry Nails, Jordan Essentials, Just Jewelry & Boutique, Kalo & Co., Lipsense, LuLaRoe, Market America, Monat, Norwex, Paparazzi Accessories, Perfectly Posh, Pink Zebra, Plexus, Plunder Designs, Premier Jewelry, Rodan + Fields, Scentsy, Tastefully Simple, Thirty-One Gifts, Tupperware, Usborne Books, VoxxLife, Wildtree, Young Living, ZealZurita

**Saturday November 4th**  
9am - 4pm

DOOR PRIZES AT EVERY BOOTH! CASH AND CARRY ITEMS AVAILABLE! CONCESSIONS WILL BE SERVED BY MOPS.

IN CASE OF INCLEMENT WEATHER, EVENT WILL BE HELD ON SUNDAY, NOVEMBER 5TH. IF YOU ARE A DIRECT SELLER WHO'S NOT LISTED AND WOULD LIKE TO ATTEND, PLEASE CONTACT ROXANNE KEARL @ 406-480-4627.

**MONDAK AG RESEARCH SUMMIT**

NOVEMBER 15, 2017 ~ 9 AM-3 PM (MT)  
RICHLAND COUNTY EVENT CENTER, SIDNEY, MT

FREE! OPEN TO ALL! LUNCH! DOOR PRIZES!

MT PESTICIDE POINTS AVAILABLE (2 PRIVATE, 2 COMMERCIAL) & 1.5 CCA CEUS!

Learn about research relevant to your farm or ranch!  
View more than 20 posters on current projects!  
Chat with researchers about your operation!

Preregister online or by mail/phone (see below) by Nov. 8th  
<https://tinyurl.com/y9b218xs>  
and be eligible to WIN a collectible tractor set from T&E of Williston!

Must be present to win.

**OUR PROGRAM**

9:00 am Welcome

9:15 am **Crop Diseases**  
Audrey Kalil - Fusarium head blight management and planting scabby seed  
Frankie Crutcher - Effect of seed treatments for control of Rhizoctonia root rot of sugarbeet

9:45 am **Wheat Stem Sawfly / Invasive Weeds**  
Tatyana Rand - Biological control of the wheat stem sawfly  
Stefan Jaronksi - Microbial control of wheat stem sawfly  
John Gaskin - Update on invasive weeds and biocontrol

10:30 am **Poster Session / Break** (Visit with the scientists)

11:15 am **Dryland and Irrigated Cropping Systems**  
Don Tanaka - Soil health in diverse dryland cropping systems of the northern Great Plains  
Bart Stevens - Irrigated cropping sequence with sugarbeet and soybean  
Bart Stevens / Chengci Chen - Sugarbeet response to tillage and nitrogen management

12:00 pm **Variety Discussion Panel**  
Chengci Chen - Pulse crop variety performance in Eastern MT  
Tyler Tjelde - Small grain varieties for irrigated production  
Austin Link - Small grain varieties for dryland production

12:30 pm **Lunch - Sponsor: Northern Pulse Growers Association**  
Speaker - Brian Gion, Marketing Director of NPGA

1:30 pm **Concurrent Sessions**  
Room 1: Small group discussions with scientists and attendees  
Room 2: Kyla Splichal - High tunnel vegetable production  
Dave Branson - Grasshopper outbreak prediction

2:15 pm **Poster Session / Refreshments** (Visit with the scientists)

3:00 pm End program

**OUR SPONSORS THANKS!**

Northern Pulse Growers Association  
Dawson County Implement, Glendive, MT  
Bilings, Glendive and Sidney  
Tri-County Implement, Inc. Sidney, MT  
Agri Industries Sidney, MT

To preregister, please include number attending (for the lunch) and their names (for the tractor prize drawings). Mail completed form by Nov. 8th to:  
Beth Redlin, USDA-ARS-NPARI, 1500 N. Central Avenue, Sidney, MT 59270

Name(s): \_\_\_\_\_ No. attending \_\_\_\_\_

You may also preregister by calling 406-433-2020 or emailing [beth.redlin@ars.usda.gov](mailto:beth.redlin@ars.usda.gov)

## 11th Annual Holiday Extravaganza

Tues, Nov. 7th • 4pm-8pm

Veteran's Memorial Building in Watford City

Get Your Photos  
with  
Santa

by Snapping Turtle Photography



Supper served by WCHS Close Up  
Coffee and cookies for our guests  
LYO Bake Sale  
Music by Kathie Konsor

### List of Vendors:

Pampered Chef  
Tupperware  
Mary Kay  
Jamberry  
Usborne Books and More  
Paisley's Treasures  
Suzi Q Boutique  
Lavin the Good Life  
Gallery on the go with Karen  
Gold Canyon  
Miss Willow's Nest  
Boutique  
Dally Up Designs  
Scentsy  
Premier Designs Jewelry

KO Leather  
Thirty-One  
Origami Owl  
Hang It On The Line  
Mary and Martha  
Arbonne  
Beaver Creek Creations  
Norwex  
Hitchin' Post Boutique  
Monat  
Designs by Lori  
The Cocoa Exchange  
Junkin' and Refunkin'  
Lilla Rose  
Shipping Crate Pottery  
Signature Homestyles

Smile, Sparkle & Shine with Julie  
We 3 B's  
Wooden Designs and Signs  
Clever Container  
Barbara Curren Photography  
The Sparkling Spur  
Lularoe  
Lori's Custom Creations  
Wild Tree  
Pure Haven  
The Ranch Boutique  
Farris Enterprises  
Pockets



# SIDNEY EAGLES

## FOOTBALL QUARTERFINAL PLAYOFFS

### Sat, Nov. 4 • 1 pm

### Dillon at Sidney



**SIDNEY EAGLE FOOTBALL**

**Bottom (L-R):** Alec Lovegren, Jarred Vojacek, Boston Peters, Bryce Thompson, Kolby Hutzenbiler, Jace Winter, Cooper McGlothlin, Nick Edwards. **2nd Row (L-R):** Kadin Lefors, Christian Dean, Jordan Darby, Jett Jones, Trey Fischer, Carter Johnson, Brody Skogen, Waylon VanBuren, CJ Nevins. **3rd Row (L-R):** Keelen Geiser, Jaxson Franklin, Tucker Swigart, Jace Johnson, Riley Jackson, Garrison Hughes, Jayden Vojacek, Tate Wieferich, Kaden Olsen, Kade Rindahl. **4th Row (L-R):** Kelton Lefors, Ritchie Crosby, Layne Swigart, Riley Waters, Riley Kostelecky, Sawyor Thogerson, Wyatt Heringer, Slade Cutler, Taylen Eggum. **5th Row (L-R):** Kade Graves, Trevor Dean, Xander Mackenzie, Alex Lee, Ryan Wyman, Max Peters, Jackson Thogersen. **6th Row (L-R):** Jed Fox, Bill Steinley, Carter Hughes, Cash Cundiff, Ernie Clifton, Ryan Horner. **7th Row (L-R):** Dorian Obergefell, Ty Metz, Ben Wenzel, Dustin Coughlin, Trey Schepens, Ashton Swenson, Kolton Reid. **Photo by Pam McGlothlin.**

**Gem City**  
MOTORS

2017-GMC-SIERRA

UP TO \$10,000 OFF

703 S. Central • Sidney

**406-433-3120**

www.gemcitymotors.com

**Screen Play**  
Screen Printing & Embroidery

Mon-Thurs: 9-12 & 1-5  
Closed Friday  
2405 West Holly St.  
406-433-2400  
screenplay@midrivers.com

Rau  
Elementary  
School

406-482-8725  
12138 Cnty Rd 350  
Sidney, MT

**Eagle Country**  
Ford

Experience the Eagle Country Difference!

Mon-Fri: 8am - 5pm  
Sat: 9am - 1pm

215 East Main St • Sidney  
1(800)482-1810 • 433-1810

www.richlandfcu.com

**Richland**  
FEDERAL CREDIT UNION

Sidney & Roosevelt County  
Office In Culbertson

**GOOD LUCK SIDNEY  
EAGLE FOOTBALL!**

**Jones**  
Construction  
Service Inc.  
406-433-2987

Proud parents & grandparents  
of Jett Jones

It's All About Saying Goodbye

**FULKERSON  
STEVENSON  
FUNERAL HOME**

315 Second St. NW  
Sidney, MT 59270  
406-488-2805  
email: ffh@fulkersons.com  
www.fulkersons.com

**John Stockhill**  
JEWELERS

"The House of Diamonds"

116 S. Central Ave  
Sidney, MT  
406-433-2702

**FRONTIER**  
Heating • Refrigeration • Air Conditioning

SIDNEY, MT  
**488-4657**

Sales • Service • Installation

**TRANE**

**HIGH CALIBER  
SPORTS**

**& Athletics**

Mon-Sat: 9am - 6pm  
Shops at Fox Run  
Sidney, MT | 406-433-1800

**Reynolds**  
MARKET

1151 S. Central • Sidney, MT  
Open Daily 6am - 10pm  
Grocery **433-2305**

reynoldsmarket.com

**ELK RIVER  
PRINTING**

Your 1-Stop  
Full-Service Print Shop

ALL COMMERCIAL PRINTING  
Full Color Marketing Materials  
Color Copies • B&W Copies  
Lamination • Specialty Papers  
Card Stock

433-4375 • Sidney, MT

**FARM & HOME  
SUPPLY**

809 East Main  
Sidney, MT  
406-433-3400

PIZZA & FINE  
FOODS

**Hwy. 16 S,  
Sidney  
Montana**

406-433-4650

**THE DEPOT**

**Tri-County  
Implement**

Sidney, Montana  
406-488-4400

2429 W. Holly St.  
**406-488-4400**

**HURLEY'S  
OILFIELD SERVICES**

- Potable Water • Sewer System
- Loaders • Communications
- Backhoe • Trucking
- Skid Houses • Porta Potties

Dispatch: 701-844-1234  
**Fairview, MT**

**FooterS**  
PIZZA • SUBS • SALADS  
**433-SUBS**

616 S. Central  
Sidney, MT  
406-433-7827  
Open 10:30am Daily

Richard L. Fink, D.M.D.  
Erin B. Fink, D.D.S.

**FINK DENTAL  
CENTER**

122 2nd Avenue S.E.  
Sidney, MT 59270  
**406-433-4422**

**East-Mont  
Enterprises Inc.**

Candy • Paper Goods  
Cleaning Supplies  
& More!

608 E. Main • Sidney  
Wholesale Distributors  
**406-433-2910**

**GURNEY  
ELECTRIC  
Inc.**

Sidney, MT  
406-482-3204

- Electrical Supplies & Equipment
- Decorative Lighting
- Electrical Service

**Sidney Sugars**  
INCORPORATED

**pepsi**

**BLUE ROCK  
PRODUCTS CO.**

501 9th Ave NE, Sidney  
406-433-3403

**Richland  
Pump & Supply**

(406) 488-8706  
David Williams  
Cell (406) 489-8706  
Scott Ramus  
Cell (406) 489-8707  
1511 S Central Ave • Sidney

**Good Luck!**

**CM BUILT DOORS**

406-433-2504 • 406-480-5570

**406-480-5570**  
**406-433-2504**



# Gun Range Fundraiser Nov. 11

By Jordan Hall

Local residents are working hard to provide to the public an all-inclusive shooting range in the Sidney area. The Roundup spoke with the president of the Richland County Sportsman's Club, Larry Christensen, who explained the plans.

"Right now," Christensen said, "we're still in the process of looking for land. We have four different locations picked out, and we're trying to get into contact with the proper people and go from there."

Christensen explained the purpose of the range, saying, "It will be an all-inclusive range. It will include everything when completed from a thousand yard range to a one hundred yard range for rifles, also for handguns and a small caliber range for .22s and also a sporting range for shotguns. It will have everything a sportsman could possibly want in terms of a gun range."

Everyone, with a simple membership, will be able to enjoy the range, Christensen said.

"Everyone from Boy Scouts to 4-H and other groups will be able to use it. It is going to be a public range with membership. We want to control the experience that you have and make sure it's a fun time, and not a range that's cluttered with trash or garbage or that people haven't taken care of. One of our main goals is that we wanted to draw people to the range so that they're not out shooting on public land and making or leaving a mess."

In order to secure purchase of land, the club is having a fundraiser on November 11 from 5-8 p.m. at OK Lanes, with free bowling and free tacos for participants. Also included is a free drawing for veterans for food gift certificates, the raffling off of a Ruger 10-22 rifle, Benelli 20 gauge shotgun, and a 6.5 Creedmoor rifle.

Christensen said, "Along with a lot of door prizes, it will just be a good, family fun event."

Currently, the region has a pistol range in Plentywood, rifle ranges in Williston and Glendive, and a small caliber indoor range in Glendive. But this will be the first all-inclusive range for the region. With nearly sixty members on the rolls, the Richland County Sportsman's Club is growing.

"Hopefully, by next year at this time we've got something concrete that we can put together and say 'this is it.' The average time frame for this type of project has been about two or so years," Christensen explained.

When asked why shooting is a good or wholesome hobby, Christensen answered, "First and foremost, we have the Second Amendment. Guns are a very enjoyable, safe way of having a fun day with your family that – as long as they are handled properly – are safe. Where else can you go for a day with your family, spend very little money, and enjoy it? If you go to a movie you may spend forty dollars, but you can go to the range all afternoon from noon to sundown and not spend forty dollars. Guns are good for protection and essential for our freedom and liberty."



Larry Christensen

**Yellowstone Chiropractic Clinic**  
(406)-433-4757 222 2nd. Ave. SW  
1-866-433-4757 Sidney, MT 59270

**Dr. Ryan Laqua**  
Chiropractic Physician &  
Certified Medical Examiner

• Sports Injuries • DOT Physicals  
• Personal Injuries & Pain Conditions

**RICHLAND ECONOMIC DEVELOPMENT CORP.**  
(A Non-Profit, County-wide Economic Development Corporation)

**Invites You To Join Us At Our**

# ANNUAL MEETING

**Tuesday, November 7<sup>th</sup>, 2017 at 6pm at the Sidney Elks Lodge**  
**Please RSVP by October 31st**

As someone interested in successful economic development, your attendance and participation will be greatly appreciated. We are honored to have guest speaker, Mr. Martin DeWitt, USDA Business Program Specialist, provide us some insight on potential resources to assist our area as we look forward in our economy. The charge to attend the meeting and the meal is \$40, in advance. The cost of the meal at the door, without RSVP is \$45. You may fax or call the office with your annual meeting plans. We appreciate your consideration to the caterers and ask that you RSVP by October 31st, 2017.

This event is open to the public.

**From the Board of Richland Economic Development Corp.**  
*Many thanks to our investment partners working together for Richland County's Future*

**Guest Speaker:**  
**Dr. Martin DeWitt**  
USDA Business Program Specialist

1060 S Central Ave • Sidney, Montana | 406-482-4679 • Fax: 406-482-5552 | redc@midrivers.com • www.richlandeconomicdevelopment.com

**J SPORTS**  
Sporting Goods

- Fishing Camping
- Ammo Hunting
- Fitness Sports
- Clothing Biking

701-260-5228  
JSportsSportingGoods.com  
1100 4th Ave NE  
Watford City, ND 58854

**Dakota West**  
CREDIT UNION

340 N. Main • Watford City  
701-444-6484  
Toll Free: 800-411-7590

**Delmar Rink Construction**

Keene, ND  
701-675-2700

# Watford City Wolves

Quarter Final Playoffs | Sat, Nov. 4 • Watford City at Fargo Shanley, 1pm (CST)



**Front Row:** Blake Bigelow, Jackson Faller, Hunter Neether, Cooper Knutson, Jady Ewing, Jarek Hogue, Brett Skarda, Jayden Lobato, Kason Hartel, Connor Dennis, Carter Zenz, Antonio Garcia. **2nd Row:** Coach Justin Johnsrud, Nishan Smith, Kaleb Goff, Jacob Goff, Jacob Juarez, Carter Knutson, Ethan Morris, Hunter Schwarzenberger, Dylan Lobato, Evan Heiser, Elijah Brown, Keegan Kaczmar, Jaxson Kettle, Coach Jerome Hoffman. **3rd Row:** Coach Logan Suter, Kyle Foster, Payton Steig, Tate LaPierre, Ethan Arnegard, Brett Rowe, Jaris Cooper, Ryan Elphic, Jacob Schwarzenberger, Michael Carter, Mason Kron, Andres Alfaro, Coach Marshall Krebs. **4th Row:** Nick Fiedler, Camdon Barnett, Brayden Jasmann, Ryan Domerese, Ian Lewis, Dijwar Ahmed, Sean Brothers, Colton Martinez, Kade Quale, Bradley Hernandez, Trey Polivka. **Not Pictured:** Trystyn Rutkowski, Tanner Olson, and Giovani, Vasquez

Meyers Department Store

**abs**

"We Have Something For Everyone!"

200 N Main  
Watford City  
701-444-2906

**McKenzie Electric COOPERATIVE**

A Touchstone Energy Cooperative

3817 23rd Ave NE  
Watford City, ND  
www.mckenzieelectric.com  
701-444-9288

**RTC**  
Smarter. Better. Faster.

www.RTC.coop  
Phone • Internet • TV

**Coca-Cola**

of Williston

Your Locally Owned & Operated Soft Drink Specialist

701-572-6746

**CEDEX Farmer's Union Oil Co.**

**HOT STUFF PIZZA**

501 6th Ave SE  
Watford City, ND  
701-444-3639

**Need answers?**  
Ask your Nodak Insurance agent.

**Eric Mogen**  
Watford City  
444-6048  
nodakins.com

**Nodak Insurance Company**

**EMPIRE NUTRITION**

1005 S MAIN ST  
WATFORD CITY, ND  
701-444-3941

**THE BUSINESS ROUNDUP**  
REACH 26,500 READERS IN THE ENTIRE MONDAK REGION  
406-433-3306 OR 800-749-3306 ~ INFO@ROUNDUPWEB.COM

GO TO WWW.ROUNDUPWEB/DIRECTORY FOR DIRECT LINKS TO COMPANY WEBSITES & LOCATIONS

**\$25<sup>00</sup>/WK**

For all your Farm/Ranch, Recreational, Residential, and Commercial needs.

**MISSOURI RIVER REALTY**

Alan Seigfreid  
Amanda Seigfreid

Jim & Janice Knudsen 120 2nd St. N.E. • Sidney Mt. 59270  
Broker/Owners (O) 406-433-3010 • (C) 406-489-3010  
email: alans@midrivers.com

Website: www.missouririverrealty.com

**TIMBER AUTO BODY**

SAND BLASTING | WINDSHIELDS | ROCK CHIPS | FIBERGLASS  
From semi's to compact vehicles, bring it in! We'll work on it!

2004 12th St SE • Watford City, ND • PO Box 592 • 701-444-2834

**DOORBUSTN**  
Portables & Septic Service, LLC

Blaine Rogers, Owner

Office: (406) 433-7586  
Fax: (406) 433-7586  
PO Box 1083 Sidney, MT 59270 Service: (406) 489-9915

www.doorbustnportablessepticsservice.com

**BORDER STEEL AND RECYCLING, INC.**

Customer Service is Our #1 Priority

Farm & Ranch Products & Construction Materials. New Steel, Aluminum & Stainless.

Brady Smelser • Tim Mulholland • Kelly Moody • Bret Smelser • Ernie Gawryluk

Sidney 35002 CR 123 406-433-7737 1-855-810-2995  
Glendive 2703 W. Towne St. 1-800-423-5219  
Williston 13896 W. Front St. 1-800-820-5493  
Plentywood Hwy 16 East 406-765-2624

HOSE ASSEMBLIES WHILE YOU WAIT

**MFCP MOTION & FLOW CONTROL PRODUCTS, INC.**

Fluid Connectors - Industrial Hose - Seals  
Hydraulics - Pneumatics - Automation  
Filtration - Racor - Instrumentation

406.433.1590  
After Hours 406.478.3116 Fax 406.433.1589

SIDNEY, MT 205 2nd Ave NE  
WWW.MFCPINC.COM

**Parker Store**

YOUR COMPANY HERE



# Divisional C Volleyball Tourney

Thurs - Sat, Nov 2-4: Sidney High School

## Thursday, November 2 Schedule

10 am	Savage vs Ekalaka
11:30 am	Scobey vs Broadus
2:00 pm	Wibaux vs Froid/Lake
3:30 pm	North Country vs Fairview



### SAVAGE VOLLEYBALL

Back (L-R): Bethany Wells, Rianna Clifton, Brynn Salsbury, Soda Rice, Emily Reynolds, Kayla Nelson, and Breanna Adolph.  
Middle (L-R): Shayanne Castro, Jordan Romero, Haylie Conradsen, Ashlind Conradsen, Alexia Papka, and Taryn Hagler. Front (L-R): Kiana Miller and Tyler Lien



GOOD LUCK  
FAIRVIEW WARRIORS!

Call 742-5261 for Your Appointment Today!

**MONDAK**  
FAMILY CLINIC

the Chairman Service of  
SIDNEY HEALTH CENTER

M-TH: 8:30am - 5pm  
Fri: 8:30am-Noon  
304 S Ellery Ave • Fairview, MT

*Prairie*  
**Electric**

406-776-2474  
prairieele@midrivers.com  
Savage, MT

Good Luck!  
From  
**THE SAVAGE MINE**

PO Box 30 • Savage, MT  
406-798-3651



### FROID/LAKE VOLLEYBALL

Front (L-R) Aleah Johnson, Kennedy Ereth, Diamond Baxter, Cierra Parsons, Sandi Hicks, Kinsey Rassmussen, Meg Ator  
Back (L-R) Assistant Coach--Nyby, Jennifer Lancaster, Morgan Mason, Haley Labatte, Sydney Dethman, Mackenzie Dethman, Sydney Labatte, Kayla Kidder, Head Coach--Kiah Smith.

406-742-5224

**Water Hole #3**

Fairview, Montana  
416 S. Ellery

**TRIPLE**

**DISPOSAL**  
776-2500  
SAVAGE, MT

**POWDER KEG**

EST. 1972

Family Dining  
Open 4:30 pm Tue-Fri  
2 pm Sat & Sun  
Fairview • 406-742-5180

**THE OASIS GREENHOUSE**

3 1/2 miles north of Fairview on Hwy 58

701-744-5752  
oasis@midrivers.com



### FAIRVIEW VOLLEYBALL

Back (L-R): Emily Sundheim, Jadyn Gackle, Ally Young, Logan Schipman, Hanna Skov, Emily Axtman, Alexis Sundheim, Jae Kloker, Torrie Hurley, Bailee Vitt, Amber Berry, Bailey Seader, Mackenzie Hall, Becca Deming, Macy Seadeek, & Montana Zevenbergen. Front (L-R): Asst. Coach Amy Karst, Head Coach Anil Kara, & Manager Karissa Martinez.

**Miller's Garbage Service**

Savage, MT  
406-776-2334

**NEU'S SUPERVALU**

- Grocery • Bakery
- Fresh Meat • Beer
- Ice • Snacks
- Full Service Deli

406-742-5441  
303 S Ellery St • Fairview, MT

**Daniels-Sheridan**  
Federal Credit Union

Your savings federally insured to \$250,000.  
National Credit Union Admin., a U.S. Govt. Agency

Serving Daniels, Sheridan & North Valley Counties  
**Scobey, MT**  
P.O. Box 1160 • 487-5391  
**Medicine Lake, MT**  
PO Box 267 • 789-2209

**NEU CONSTRUCTION, INC.**

- Oil Field Roads & Locations
- Reclaim Work
- Gravel & Scoria Hauling

**Fairview, MT**  
**406-742-5549**  
neuconst@midrivers.com

**QUINNELL ELECTRIC**

- Commercial
- Residential
- Remodels
- New Construction

**Chuck Quinnell**  
**406-776-2331**

**HURLEY'S OILFIELD SERVICES**

- Potable Water • Sewer System
- Loaders • Communications
- Backhoe • Trucking
- Skid Houses • Porta Potties

Dispatch: 701-844-1234  
**Fairview, MT**

**Merchants Bank**

Open 9am - 4pm  
Monday - Friday

Box 465 • Fairview, MT  
406-742-5203

**FDIC**

**GOLD RUSH CASINO**

504 South Ellery  
Fairview, MT

Lounge: 742-4653 • Office: 742-4654  
Open From 10am - 2am

**Mon-Kota, Inc.**  
Fertilizer & Irrigation Sales & Service

**Reinke plus program**  
Platinum Plus Certified

Fairview, MT • 701-844-5300

**Reinke**  
MORE RIGHT THAN RAIN

**GOOD LUCK!**

From the Fairview School Staff

**FAIRVIEW WARRIORS**

**Craig's MEAT PROCESSING** 776-2447  
Savage, Montana

- custom meat processing
- curing & smoking
- sausage & Jerky
- wild game

**Slaughter at the plant or your farm!**

**Body Bliss MASSAGE**

**Cammi Seader**  
406-480-5180  
812 9th St West  
Fairview, MT  
Open 8am - 5pm

**The County Implement**

Sidney, Montana  
406-488-4400

2429 W. Holly St.  
**406-488-4400**

**DOUBLE BARREL SALOON & CASINO**

Open 10am - 2am Daily  
401 Ellery Avenue  
Fairview, MT  
406-742-8110

**Steakhouse Hours:**  
Sun-Thurs: 5-9pm  
Fri & Sat: 5-10pm

**Sidney Sugars**

**Richland Pump & Supply**

(406) 488-8706  
David Williams  
Cell (406) 489-8706  
Scott Ramus  
Cell (406) 489-8707  
1511 S Central Ave • Sidney

**HOTEL ALBERT**  
Lounge & Casino

419 S. Ellery  
Fairview, MT  
406-742-5164

**pepsi**

**BLUE ROCK PRODUCTS CO.**  
501 9th Ave NE, Sidney  
406-433-3403



# North Dakota Hunting Edition

White-tailed and Mule Deer Hunting Season is Nov. 10-26. For more information go to [gf.nd.gov/hunting](http://gf.nd.gov/hunting). (Photo from [gf.nd.gov](http://gf.nd.gov))

## Deer Season Questions and Answers

By ND Game & Fish Department

Every year the North Dakota Game and Fish Department receives questions from deer hunters who want to clarify rules and regulations. Some common questions are listed below. Hunters with further questions are encouraged to call the Game and Fish Department at 701-328-6300, from 8 a.m. – 5 p.m. weekdays, or access the hunting and trapping link at the department's website, [gf.nd.gov](http://gf.nd.gov).

What licenses do I need for deer gun season? A fishing, hunting, and furbearer certificate, the general game and habitat stamp or a combination license, and the deer license. Gratis license holders need only the gratis license.

Can I use my gratis license to take a mule deer doe? Not in unit 4A.

I shot a deer in Unit 3F2. What field dressing restrictions must I follow? Hunters cannot transport a carcass containing the head and spinal column outside of the unit unless it's taken to a state-inspected meat processor within five days of the harvest date. In addition, the head can be removed from the carcass and taken to a licensed taxidermist or to a chronic wasting disease surveillance drop-off location. If the deer is processed in the field to boned meat, and the hunter wants to leave the head in the field, the head must be legally tagged and the hunter must be able to return to or give the exact location of the head if requested for verification.

I received a lottery license, and I own land in another unit. Can I hunt on my land in the other unit with my lottery license? A person who holds a valid license to hunt deer may hunt the same species and sex of deer on land in an adjoining unit for which that person would be eligible for a gratis deer license.

I can't find my deer license. What should I do? You must obtain an application for a duplicate license from the Game and Fish Department – by calling 701-328-6300 or printing it off the website at [gf.nd.gov](http://gf.nd.gov). Fill out the form, have it notarized and return it to the Department along with a fee. You may not hunt without the deer license in your possession. If you find the original license after receiving a replacement, you must return the original to a local game warden or Game and Fish office.

Can hunters age 14 or 15 (and qualifying 13 year olds) with a youth season license who did not harvest a deer during the youth season hunt the regular deer gun season with this license? Yes, but you are subject to the restrictions listed on the license.

I was unsuccessful in filling my mule deer buck license in a restricted unit during the youth season. Can I hunt the remainder of the state during the regular gun season? No. You are restricted to the same unit as during the youth season.

I shot a deer, but it is rotten. What can I do? You must take possession of the animal by tagging it. A license only allows you the opportunity to hunt. It is not a guarantee to harvest a deer, or to the quality of the animal.

What should I do if I find a wounded deer? Contact a game warden. Do not shoot the deer unless you want to tag it, or are instructed by the warden to do so.

Is camouflage blaze or orange acceptable for the deer gun season? No. You must wear both a hat and outer garment above the waistline totaling at least 400 square inches of solid daylight fluorescent orange.

I hunt with a bow. When do I have to wear orange? Only during the regular deer gun season.

Can I hunt road rights-of-way? Do not hunt on road rights-of-way unless you are certain they are open to public use. Most road rights-of-way are easements under control of the adjacent landowner and are closed to hunting when the adjacent land is posted closed to hunting.

Can I hunt on a section line if it is posted on both sides? No. If the land is posted on both sides, the section line is closed to hunting, but is still open for travel.

Can I retrieve a wounded deer from posted land? If the deer was shot on land where you had a legal right to be and it ran on posted land, you may retrieve it. However, you may not take a firearm or bow with you. The department suggests contacting the landowner as a courtesy prior to entering.

What if the landowner says I cannot retrieve a deer from posted land that was shot on land where I had a right to be? Contact a game warden.

Can I drive off a trail on private land to retrieve a deer? Unless prohibited by a landowner or operator, you may drive off-trail on private land once a deer has been killed and properly tagged. You must proceed to the carcass by the shortest accessible route, and return to the road or trail by the same route. However, off-trail driving is prohibited in

all circumstances on state wildlife management areas, Bureau of Land Management lands, national wildlife refuges, national grasslands, federal waterfowl production areas and state school land.

Do I need to pay attention to the fire danger index in November? In a year with a lack of moisture it can be of concern. When these conditions are present, hunters should keep track of the daily fire danger index, which restricts off-trail vehicle use and recreational fires when the index is in the Very High, Extreme and Red Flag Warning categories. Some counties may also still have localized restrictions in place.

Can I transport someone else's deer? Yes, but you will need a transportation permit from a game warden. The license holder, person transporting the animal, and the carcass must be presented to the game warden before the permit is issued.

What if I am going to take my deer head to a taxidermist and meat to a butcher shop? How do I keep the tag with it all?

The tag should remain with the head and the carcass tag should remain with the meat.

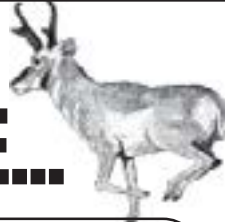
May I carry a pistol when I am hunting with a deer rifle? Yes, but the handgun must meet minimum requirements listed in the deer hunting regulations to be legal for taking deer.

Can I use a bow to fill my regular deer gun license? Yes. You may use any legal firearm or bow during the regular deer gun season.

Can I carry both bow and gun afield during deer gun season if I have both licenses? Yes, but only if you are going to fill your gun license. No firearms, except handguns, may be in the hunter's possession while hunting with a deer bow license. However, handguns may not be used in any manner to assist in the harvest of a deer with an archery license.

AFTER YOU BRING IN THE

# BIG ONE...



**STOP IN & CHECK  
OUT OUR COOL  
SPECIALS!**

## D & M's Office

10 a.m.-1 a.m. Mon.-Sat. • 12-10 p.m. Sun.  
701-842-6132 • 115 Main • Watford City, ND

## HUNTING IS IN FULL SWING!

### Get Your Rifle, Ammo & All Your Gear Right Here

**Basketball Shoes &  
Hockey Gear Are Here!**

**HIGH  
CALIBER  
SPORTS**

**& 4 Athletics**  
One Location To Serve You Better!

440 N Central Ave • Sidney, MT  
Shops at Fox Run | 406-433-1800  
Monday-Saturday: 9am - 6pm  
Sunday: 10am - 4pm

## "Friendliest Bar in Town"



- ☆ Cold Beer
- ☆ Darts
- ☆ Pool
- ☆ Pull Tabs

## CITY BAR

Main St. • Watford City, ND • 701-444-4287

## Outsider's

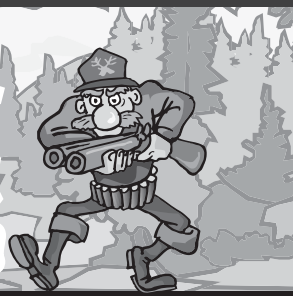
Open 7 Days A Week  
8am - 1am  
Kitchen Closes at 11pm

### BAR & GRILL

Serving The Area's BEST

Breakfast, Burgers, Wings & Sandwiches. Plus A Full Bar!

### Stop In Before & After Hunting For Breakfast or Beer & A Burger!



905 3rd Ave SW (South of Watford Motel) • 701-842-2693

## LONG X LIQUOR STORE

**New  
Specials  
Every  
Week!**

**Ice • Liquor • Wine • Pop**

Mon-Thurs: 9am - 9pm • Fri: 9am - 10pm • Sat: 10am - 10pm  
Highway 85 • Watford City (Long X Visitor's Center) | 701-444-3335

## Get Ready For Hunting!



- Carhartt – Rain Defender Hoodies, Coats & Overalls
- FR Coats & Overalls • Firearms • Ammo
- Men & Women's Outerwear • Bags • Backpacks
- Fleece, Sweaters & Button-down Shirts • Knives
- Wool Socks • Boots by Georgia, Carhartt, Muck & Rocky
- Space Heaters • Binoculars • Flashlights

**CENEX**

## Farmers Union Oil Co.

501 6th Ave SE • Watford City | Open 5am - 10pm Daily • 701-444-3639



The  
Roundup  
Classifieds

Reach Over 21,000 Readers Each Week In Eastern Montana & Western North Dakota And Always On The Internet at [roundupweb.com](http://roundupweb.com)  
(Paypal required for online purchases)

Add a photo  
to your classy online!  
(additional charge)

Now Taking  
Credit Cards!  
(5% charge added  
to all transactions)

Get Up To 30 Words For Just \$9.25 • Deadline: Monday noon

**HELP WANTED**  
**HANDY MAN WANTED**  
Experience necessary. Carpentry, plumbing, electrician. Not afraid of heights. Small jobs only. 406-489-1945 or apply at Yellowstone Marketplace, 102 N. Central Ave., Sidney, MT.

**DRUG AND ALCOHOL TESTER**  
Looking for a male drug and alcohol tester. Will be mostly in the office but may be required to do some mobile work. Furnished housing available. Call Rena, 406-489-1467.

**FOR RENT**  
**ONE BEDROOM APARTMENTS**  
Savage Sunrise Manor Assisted Living Facility, 407 Mesa Street, South. Call 406-776-2040, leave name and number.

**APARTMENT FOR RENT**  
Large 2 bedroom apartment \$650/month. Heat and water included. No pets, no smoking, off street parking with winter plug-in. Call 488-5916 or 488-5119, if no answer, please leave message.

**FARM & RANCH**  
**IRRIGATED FARM FOR LEASE**

900 acres irrigated farm for lease between Sidney and Fairview, 400 acres of the 900 are under pivot, 1,000 head feed lot, pasture for 75 cows. Contact Dennis Wick at Nick Jones Real Estate, 310 14th St. SE, Sidney, MT for more details, 406-433-4445.

**FOR SALE**  
We sell Mouse Assault bait. Kills mice quickly. Williston Saddlery, Hwy 2 West. 701-572-2267.

**SIDNEY FEEDS SALT SALE**  
Redmond block and bagged salt. Sweet Pro feed supplements and Redmond Salt products. For the best for your cattle and horses, call 406-488-4338.

**WEANING SUPPLIES**  
Mr. Cowman: Weaning supplies - vaccinations, dewormer pour on, steel feed

bunks, panels, round bale feeders, portable loading chute. Williston Saddlery, Hwy 2 West. 701-572-2267.

**ALFALFA HAY FOR SALE**  
500 1st cutting irrigated alfalfa bales put up in nice shape. Net wrapped, about 70 inch bales. Cartwright, ND. Call 701-425-1913.

**FOR SALE**  
Portable corral panel trailers. Continuous fence 5 bar or 6 bar 20 foot sections. Gates made out of 2" pipe. Corner post station braces. Call for more information, 701-770-2260.

**RITCHIE LIVESTOCK WATER FOUNTAINS**  
On hand and we have replacement parts. Williston Saddlery, Hwy 2 West. 701-572-2267.

**VERMEER HAYING EQUIPMENT**  
See us today for all your haying & feeding equipment, sweeps & farm oil. Anderson Vermeer

Sales & Service. Open Mon.-Fri., 8 a.m.-5:30 p.m. 701-828-3358 or 701-828-3482 (after hrs.). Alexander.

**SERVICES**  
**WELDING**  
Welding & repair work. No job is too small. Portable welder, reasonable rates. 701-444-2936.

**MOVING? TOO BUSY TO DEEP CLEAN? NEED PAINTING?**  
Call 406-489-7289 for free estimates.

**AIRCRAFT BUYING, SELLING AND APPRAISALS**  
Aircraft buying, selling and appraisals? Call Sidney Air Service, Inc for sales and acquisitions! Call 406-480-2024, ask for Barry.

**CLEANING**  
Deep cleaning, garage cleaning. Organize, organize, organize. Call for more information, 406-205-7785.

**ROUND OR RECTANGULAR TABLES & CHAIRS FOR RENT**  
Parties, weddings, get togethers. Ultimate Showdown Assoc. Located at Hefty Seed Co. South of Sidney, has tables & chairs for rent. Will deliver. Call 406-488-4338.

**PILOT SERVICE**  
You buy it we fly it. Single engine, multi engine, turbine. Aircraft management service also available. Call 406-480-2024, ask for Barry.

**FOR SALE**  
**1995 GMC YUKON, 1993 CHEVROLET PICKUP**  
4x4 winter, 1995 GMC Yukon, 201,000 miles, all original except brakes and shocks, uses and leaks nothing, no dents or rust, dependable, \$3,750 or best offer. 1993 Chevrolet 1/2 ton 4x4, short box pickup, 247,000 miles, no dents, recent motor and transmission, no leaks, \$3,750 with propane unit or \$2,900 without, dependable. Must sell best offer. 701-744-5729.

**PICKUP TOPPER; WOOD CHIPPER**  
Topper 6 1/2', fits 2006-2007 Ford pickup, \$400; DR Wood Chipper, ten hour use, \$1,500. Call 701-744-5329.

**WANTED**  
**OLD HORSE**  
Want old horse to keep my old horse company. The horse will have a good home. Call Pat at 701-744-5678.



**TIRES FOR SALE**  
**\$100<sup>00</sup> Each**  
We've just purchased a semi-load of new Michelin LT 245-75-17, 10 ply pickup tires & Goodyear 265-70-17 pickup tires & are selling them for \$100 each - carry out price.  
**MAGNUM MOTORS**  
1820 2nd St W • Williston, ND | 701-572-0114

**INSTALLED WINDSHIELDS FOR MOST MAKES & MODELS ONLY \$220**  
**MAGNUM MOTORS**  
Williston, ND • 701-572-0114 • 701-770-6375

**For Sale by Bid– Digger Truck**

McKenzie Electric Cooperative, Inc. has the following digger truck for sale by sealed bids. This is a 1995 GMC C7H042 Digger with 128,120 miles.

Sealed Bids are due on Monday, November 27th at 4:30 PM to Jamie Cross. To see this truck, please ask for Jim or Brandon at the MEC office at 3817 23rd Avenue NE, Watford City, ND or call 701-444-9288 with questions.

MEC hereby disclaims any warranties, expressed or implied, of merchantability or fitness for a particular purpose. This property is being sold on an "as is" basis.

Seller reserves the right to reject any and all bids.

**Bids can be mailed to:**

McKenzie Electric Cooperative, Inc.,  
Sealed Bid  
PO Box 649  
Watford City, ND 58854-0649



**For Sale by Bid– Bucket Truck**

McKenzie Electric Cooperative, Inc. has the following bucket truck for sale by sealed bids. This is a 2007 GMC Topkick C5500 bucket with 166,385 miles.

Sealed Bids are due on Monday, November 27th at 4:30 PM to Jamie Cross. To see this truck, please ask for Jim or Brandon at the MEC office at 3817 23rd Avenue NE, Watford City, ND or call 701-444-9288 with questions.

MEC hereby disclaims any warranties, expressed or implied, of merchantability or fitness for a particular purpose. This property is being sold on an "as is" basis.

Seller reserves the right to reject any and all bids.

**Sealed Bids can be mailed to:**

McKenzie Electric Cooperative, Inc.,  
Sealed Bid  
PO Box 649  
Watford City, ND 58854-0649



THESE AND MANY MORE  
GREAT FAMILY HOMES!



**A Great Home with Quality Updates!**  
This 4 bedroom, 1 and 1/2 bath home is situated on a 7,000 sq ft lot. The roof was replaced this year and the heating and cooling systems have been recently updated and well maintained. There is a fenced backyard with a covered concrete patio. The detached 24' x 30' double garage has alley access for off street parking. A dine in kitchen, sunny living room, and a basement family room give this home plenty of space and charm. # R8527



**Beautiful Home Built in 2011**  
This 5 bedroom, 3 bath home is nearly new. Built in 2011, 1,500 sq. ft. on the main and 1,500 sq. ft. basement fully finished. Home sits on two lots in the Sidney Circle 2 Subdivision. This beautiful property is a must see. Call today to set up your showing. #R8526

310 14th St. SE, Sidney  
406-433-4445

Or contact one of our agents at home:

NICK JONES  
REAL ESTATE

Justin Jones, Broker/Owner.....406-480-9525  
Jerrian Franzen, Broker.....406-478-3773  
Dennis Wick, Agent.....406-480-1550  
Terran Hillesland, Agent.....406-480-0129  
Kristin Larsen, Agent.....406-480-5139

[www.NICKJONESRE.COM](http://www.NICKJONESRE.COM)

Lunch Menus!

**Sidney Schools**

**Thurs., Nov. 2:** Chicken fried steak, potatoes and gravy, corn, peaches.

**Fri., Nov. 3:** No school.

**Mon., Nov. 6:** Chicken drumstick, potatoes and gravy, grapes, dinner roll.

**Tues., Nov. 7:** Hot ham and cheese, cheesy potatoes, green beans, peaches.

**Wed., Nov. 8:** Cheeseburger, french fries, banana.

**Savage School**

**Wed., Nov. 1:** Nachos.

**Thurs., Nov. 2:** Grilled cheese, tomato soup.

**Fri., Nov. 3:** Pork steak.

**Mon., Nov. 6:** Hot dogs.

**Tues., Nov. 7:** Beef stroganoff.

**Wed., Nov. 8:** Tostadas.

**Rau School**

**Wed., Nov. 1:** Egg roll, salad, watermelon, breadstick, root beer float.

**Thurs., Nov. 2:** Pork chops, cheesy potato, peas, mandarin oranges.

**Fri., Nov. 3:** No school.

**Mon., Nov. 6:** Chicken strips, smiley fries, corn, mixed fruit.

**Tues., Nov. 7:** Cheeseburger soup, veggies, applesauce, breadstick.

**Wed., Nov. 8:** Kindergarten pick! Taco in a bag, rice, salad, strawberries, chocolate pudding.

**Froid School**

**Thurs., Nov. 2:** Corn chowder, turkey sandwiches, fruit, milk.

**Fri., Nov. 3:** Corn dogs, fries, veggies, fruit, milk.

**Mon., Nov. 6:** Shepherds pie, buns, fruit, milk.

**Tues., Nov. 7:** Breakfast pizza, hash browns, go-gurts, fruit, milk.

**Wed., Nov. 8:** Beef pot roast, mashed potatoes and gravy, veggies, fruit, milk.

**Bainville School**

**Wed., Nov. 1:** Polish dogs, sauerkraut, potato salad, pears.

**Thurs., Nov. 2:** Creamy potato soup, roll, fruit.

**Fri., Nov. 3:** BBQ chicken sandwich, cole slaw, baked beans, peaches.

**Mon., Nov. 6:** Elise Romo Day! Chicken nuggets, smiley french fries, corn, oreo chocolate mousse.

**Tues., Nov. 7:** No school.

**Wed., Nov. 8:** Lasagna, garlic bread, green beans, strawberries/bananas.

**Richey School**

**Wed., Nov. 1:** Chicken strips, broccoli, mandarin oranges, chocolate chip cookies, milk.

**Thurs., Nov. 2:** Tacos, fresh veggies, applesauce, milk.

**Fri., Nov. 3:** Cheeseburgers, fries, steamed carrots, fruit cocktail, milk.

**Mon., Nov. 6:** Burritos, spanish rice, corn, pineapple, milk.

**Tues., Nov. 7:** Hot ham and cheese, peas, peaches, pudding, milk.

**Wed., Nov. 8:** Chili, cinnamon roll, pears, milk.

**Culbertson School**

**Wed., Nov. 1:** Ravioli, breadsticks, fruit, milk.

**Thurs., Nov. 2:** Chicken strips, tater tots, fruit, milk.

**Fri., Nov. 3:** Cheeseburgers, fries, fruit, milk.

**Mon., Nov. 6:** Pizza, fruit, milk.

**Tues., Nov. 7:** Spaghetti, garlic toast, fruit, milk.

**Wed., Nov. 8:** Beef stroganoff, noodles, veggies, fruit, milk.

**Lambert School**

**Wed., Nov. 1:** Polish sausage, boiled potatoes, cabbage, fruit, milk.

**Thurs., Nov. 2:** Lasagna, corn, garlic bread, fruit, milk.

**Fri., Nov. 3:** Beef strips, tater tots, carrots, fruit, milk.

**Mon., Nov. 6:** Chicken alfredo, peas, breadstick, fruit, milk.

**Tues., Nov. 7:** Super nachos, fresh veggies, fruit, milk.

**Wed., Nov. 8:** Turkey dinner.

**Fairview School**

**Thurs., Nov. 2:** Corn dogs, chips, pears, dessert, milk.

**Fri., Nov. 3:** No school.

**Mon., Nov. 6:** Pork rib sandwiches, baked beans, mixed fruit, milk.

**Tues., Nov. 7:** Chicken legs, mashed potatoes with gravy, corn, mandarin oranges, milk.

**Wed., Nov. 8:** Taco in a bag (lettuce, meat, cheese), peaches, milk.

**Watford City School**

**Thurs., Nov. 2:** Boneless BBQ pork rib on a bun, fries, baked beans, fruit cocktail.

**Fri., Nov. 3:** Belgian waffle with fruit and whipped topping, sausage patty, carrots, fresh fruit.

**Mon., Nov. 6:** Corn dog, waffle fries, corn, peaches.

**Tues., Nov. 7:** Beef stroganoff over buttered noodles, roll, green beans, jello with fruit.

**Wed., Nov. 8:** Chicken rings, cheesy potatoes, peas, cinnamon applesauce.

**Alexander School**

**Wed., Nov. 1:** Teriyaki or orange chicken, fried rice, fortune cookie.

**Thurs., Nov. 2:** Pizza sticks or calzones, broccoli with cheese.

**Fri., Nov. 3:** Sausage frittas, french toast stick, scrambled eggs.

**Mon., Nov. 6:** Shredded pork on a bun, wedges, baked beans.

**Tues., Nov. 7:** Chicken strip or fish stick, rice pilaf.

**Wed., Nov. 8:** Tater tot hot dish, green beans, bread.

The  
Roundup  
Classifieds

Reaching over 10,889 Households in Western North Dakota and Eastern Montana Every Week

(Please Print)

(1) _____	(2) _____	(3) _____	(4) _____	(5) _____	(6) _____
(7) _____	(8) _____	(9) _____	(10) _____	(11) _____	(12) _____
(13) _____	(14) _____	(15) _____	(16) _____	(17) _____	(18) _____
(19) _____	(20) _____	(21) _____	(22) _____	(23) _____	(24) _____
(25) _____	(26) _____	(27) _____	(28) _____	(29) _____	(30) _____ (\$9.25)
(31) _____ (\$9.35)	(32) _____ (\$9.45)	(33) _____ (\$9.55)	(34) _____ (\$9.65)	(35) _____ (\$9.75)	(36) _____ (\$9.85) (etc)

\$9.25 for 30 words or less; 10¢ per additional word  
**Payment Must Accompany Ad**

# of words \_\_\_\_\_ x # of Times \_\_\_\_\_ = Cost \$ \_\_\_\_\_

**Mail To:** \_\_\_\_\_  
The Roundup Name \_\_\_\_\_  
PO Box 1207, Sidney, MT 59270

Ranch For Sale

Richland County, Montana

20 miles south of Sidney, MT on Highway 261

5060 Acres Total

3780 acres deeded. 1280 acres states leases to transfer with ranch. 260 +/- acres tillable in Hayland. Annual Taxes: \$4,620 (2016)

\$3,500,000

Excellent Improvements & Well Watered  
Cattle & machinery can be purchased from seller

For Additional Information Contact Roger Cymbaluk

Basin Brokers, Inc. • PO Box 456 • 106 Main Street

Williston, ND 58802-0456 | 1-800-572-5560 • 1-701-572-5560



Join our team! Job Opportunities

<b>Certified Nurse Assistant</b> <b>Extended Care</b>	<b>Lodge Resident Assistant</b>
	<b>MDS Coordinator - ECF</b>
<b>Clinic Receptionist - Float</b>	<b>Medical Staff Informatics</b>
<b>Food Service</b> <b>Cook</b> <b>Utility Worker</b>	<b>Personal Assistance Aide</b>
<b>Information Systems</b> <b>Technician</b> <b>Project Lead</b>	<b>Registered Nurses</b> <b>Acute Care</b> <b>CCU</b> <b>Clinic</b> <b>Extended Care</b> <b>OB</b> <b>Surgery</b>
<b>Laboratory Medical Technologist/Medical Laboratory Technician</b>	<b>Retail Pharmacy Support Staff</b>
<b>LPN</b> <b>Clinic</b> <b>Extended Care</b>	<b>Surgical Scrub Technician</b>



**BENEFITS:** Health insurance • Generous paid leave • Competitive pension plan • Flexible spending accounts • Voluntary dental, vision, critical illness and accident insurance • Life and AD & D Insurance • Hospital and Fitness Facility Discounts

For additional information or to apply online, please visit our website or contact:

**Human Resources • Phone: (406) 488-2571 • [HR@sidneyhealth.org](mailto:HR@sidneyhealth.org)**  
216 14th Ave SW • Sidney, Montana

Visit Our Website at: [www.sidneyhealth.org](http://www.sidneyhealth.org)





## Seniors Win Powder Puff Football

Powder Puff football was held at the football field in Sidney last Saturday night. The seniors won in OT. Breanna Frank makes an interception during the game. (Photo by Pam McGlothlin)

# BOB MCGINNIS

## REAL ESTATE & PERSONAL PROPERTY AUCTION

SATURDAY, NOVEMBER 4TH, 2017 • 9:00AM MST • SIDNEY, MT

**Real Estate • Offered at 2:00 pm MST**

Location: East Main St., Sidney, MT. Directly North from Farm & Home

Directions: Take Sidney Truck Route from Central Ave. to sale site. Watch for signs

The following property will be offered at public auction. Final bid will be subject to seller's approval. The seller reserves the right to accept or reject any and all bids.

**Legal Description:** KENOVY ADD (SIDNEY), S33, T23 N, R19 E, BLOCK 009, Lot 00A, TRACT A TRACT B AND TRACT C IN TR D LESS ST HY BLK-9 KNOV ADD All property located in KENOVY SUBDIVISION

**Real Estate Viewing Dates:** By appointment, contact Dan Goss 406-480-2778

**Property Location:** 3RD ST NE, Sidney, MT 59270

Being offered at auction is a +/- 16,553 sq. ft. commercial lot with a +/- 2,400 sq. ft. shop and warehouse. Property is situated directly on the Sidney truck route with access to both the truck route and 3rd St. NE. This would make a great location for a commercial warehouse, storage area, or for a new commercial business or the expansion of an existing business. Shop has plenty of space for floor loads or for storing commercial equipment. Please contact Dan Goss 406-480-2778 for more information.

**Mineral Rights:** All minerals are reserved.

**Taxes:** Taxes will be prorated from day of closing.

**Closing Costs:** Seller will pay all normal closing costs. Buyer to pay any cost associated with financing.

**Title Insurance:** Standard owner's title insurance will be provided by the seller through Richland County Title Co. Sidney, MT 59270 (406) 433-8584

**Real Estate Terms:** Cash. The highest accepted bidder will be required to enter into a written buy-sell agreement and tender a ten-per-cent (10%) non-refundable down payment at the conclusion of the auction. Title will be transferred by warranty deed with the insurance. The balance is due in cash at closing on or before Monday, December 4th 2017 (Seller will be open to early closing if buyer so desires.) at the office of Richland County Title, 1250 S. Central Ave., Sidney, MT 59270 (406) 433-8584. All funds shall be held in the escrow account of Richland County Title, 1250 S. Central Ave., Sidney, MT 59270 (406) 433-8584.

You are a considered acceptance of the terms of the auction. If you, the buyer, fail to close, the down payment is non-refundable. If the seller fails to close, 100% of the down payment will be returned. At this time there is no known reason that the seller would not be able to close. All information is from sources deemed reliable, but is not guaranteed by the seller or the Auctioneer.

Offering is subject to error, omission, and approval of purchase by seller. We urge independent verification of each and every item submitted to the satisfaction of any prospective buyer. It is every potential purchaser's sole responsibility to accomplish his or her due diligence in whatever manner he or she deems advisable prior to sale time. The Auctioneer/Auction Company shall not be responsible or liable in any way if the seller fails to honor any bid, or refuses or cannot close title in accordance with the writing bid or any contract entered in respect thereof. Arrangements made sale the take precedence over any printed or internet materials. The property shall "As is" where is. MONTANA AUCTION COMPANY BACKLASH AUCTION & APPRAISAL and its auctioneers are acting solely as auctioneers for the seller.

For More Information Contact: DAN GOSS, AUCTIONEER • (406) 480-2778 Sidney, MT • MONTANA AUCTION COMPANY SIDNEY, MONTANA 59270

### Tools & Shop Equipment

- Hammer 10 ton floor hoist
- Weaver 2 post floor hoist
- South Bend metal lathe, lathe drive, 15" swing, 8 ft bed, works great
- South Bend metal lathe, 3 ft bed, needs work
- Thor valve grinder and Sioux valve grinding set
- Briggs and Stratton 10hp pressure washer
- Briggs and Stratton 11hp 6000w generator
- McCulloch 2000w generator
- Lincoln Ideal Arc SP130 wire welder
- Thermal Dynamics FAK 26 plasma cutter
- Kawasaki 11.5 v cordless tool set
- Chicago Electric cordless tool sets
- Porter Cable air roller
- PE bull 10 ton port-a-power
- JET bearing splitter
- JET Drill press
- DuraCraft drill press
- Rockford parts washer
- Omaha Industrial 1hp bench grinder
- 6" bench grinder
- Makita chop saw
- Craftsman buffer
- Lots of air impact wrenches (1/2, 3/4, 1")
- Air chisels and grinders
- All American 3 tier tool box
- (2) 8 drawer MAC tools bottom tool boxes
- 1/2" Williams sockets
- 3/4 drive Oxtorque torque wrench
- Pittsburgh 3/4 drive ratchet set
- Thorsen 3/4 drive socket set
- S-K 3/4 drive socket set
- Crowder 3/4 drive socket set
- Other 3/4 drive socket sets
- Tap and Die sets
- Ridgid pipe wrenches 24"-48"

### Rifles & Shotguns

- Winchester 94 Commemorative Canadian Centennial 67 30-30
- Savage Model 16 300 Winchester Short Mag Stainless
- Ruger M77 MK II 270 Skeeterized "Boat Paddle" Stock Stainless
- Century Arms R1A1 .308 w/ wood stock and bipod
- Ruger M77 7mm Mag Tang Safety
- Remington 700 VTR .308 w/ Ultimate Sniper Major Pilester stock and Pentax Scope
- Winchester Model 37 12ga Break open
- Remberg 835 LR Mag 12ga 2 3/4 - 3 1/2"
- Marlin Model 93 Bolt 22 WMR

### Trucks & Vehicles

- 1997 Ford F250, 7.3 Diesel, 5 spd manual, 4x4, flatbed, rebuilt front end, new tires, 265,000 miles, 130,000 on new engine
- 1994 Chevy 1 ton, 4wd, 5 spd manual, 454, new clutch & fuel pump, new high output oil pump, brand new flat bed, runs great, 234,000 miles
- 1999 Jeep Cherokee Laredo, 6 cylinder, auto, leather, loaded, chain runs great, 186,376 miles
- 1982 GMC Sierra, 3/4 ton, with rebuilt Goodwrench 300, 4 spd, runs good, needs fuel tank
- 1987 Chevy C30 grain truck, rebuilt 360, 4-2 transmission, 18 ft steel box & hoist, runs great
- 1991 GMC Top Kick, 365 propane, 5/4 manual transmission, 16R bed wheelie & display
- 1985 International, DT486 diesel, manual transmission, needs head gasket
- 1980 Ford F700, propane small block Ford, 5-4 transmission, 11.5 ft bed with ball
- 1955 M55 deuce and a half flat fire truck, runs good, originally from Glasgow Air Force Base
- 1942 Ford 1 1/2 ton truck, straight 6, flat roll bed with jet poles and winch, great project truck
- 1952 Chevy loadmaster truck, large corner cab windows, best box

### Pistols & Revolvers

- Ruger Super Blackhawk .44 Mag
- Ubers 1873 Cattleman S&W 44-40
- CZ 451 Pistol 7.65 cal with case holder and accessories
- Ruger MK II Bolt Barrel 22LR
- Cimarron 1858 Remington Army 44 cal

### Ammunition & Primers

- CCI 22LR Suppressor Subsonic Hollow point (50 Boxes with 50 Rounds each box)
- Rem-UMC 17 Hornet (10 Boxes with 50 rounds per box)
- Remington Subsonic 22LR Hollow point (5 Boxes of 500 Rounds)
- CCI 22 WMR Maxi-Mag TNT (80 Boxes of 50 or 8 Boxes of 500)
- CCI Small Pistol Primers (5 Boxes of 1000)
- CCI Large Pistol Primers (4 Boxes of 1000)

Disclaimer for firearms: Must be 18 to bid on long guns and 21 to bid on handguns. Handguns sold only to 18 residents. Handguns can be transferred to a FFL dealer in the Buyer's state at the Buyer's expense. All buyers MUST be able to pass federal background check to purchase firearms. Background checks and firearms pickup will be performed at High Country Sports, 441 E. Central, Sidney, MT 59270. State and federal laws apply.

### Fork Lifts & Other Equipment

- Caterpillar fork lift, needs work
- Yale fork lift for parts
- Mobility fork lift, Made in Fargo, ND, needs work
- Sixsteel hydraulic grapple pipe fork
- 3 bottom spinner plow
- Model 880-S bottom plow
- Sherman model 1400 loader
- Dual model 100 loader
- Tasci Lightning weeder
- 3 point post hole auger
- (3) 30x24" culvert brand new, never used

### Trailers

- 36' Herman flatbed, gooseneck trailer, 3 axle, open steel deck, 8,000lb, worn winch
- 30' Ranger Trail All, flatbed, gooseneck trailer, 3 axle, hydraulic, beaver tail, steel deck, winch
- (2) military fuel transporters, pink hitch, 11,000-25 military tons

### Collectible Tractors

- International Harvester 806, PTO, runs great, good sheet metal
- Fordson 3H, good running condition
- Ford 8N, good condition
- John Deere model A, styled, single front wheel, 42" rear tires, good project tractor
- Case DC tractor with 3 point, good paint
- Fordson Major Diesel, 3 point, PTO
- Fordson Super Major Diesel, 3 point, PTO
- Fordson Major Diesel, 3 point, CC narrow front, good sheet metal
- Case VAC narrow front, McCormick Deering W69
- Farmall H wide front

**Motorcycles**

- 2001 Kawasaki KX 100, always kept inside, runs great
- 1987 Yamaha XT 250
- 1979 Yamaha KX 80
- 1975 Yamaha Chappy, very collectible
- 1970 Honda Trail 90, good original condition

### Stationary Engines

- 1 1/2 IHC Type M on cart, runs good
- 1 1/2 John Deere E, complete, good project engine

For more photos & information please visit [www.montanaauctioncomp.com](http://www.montanaauctioncomp.com)

TERMS AND CONDITIONS: Cash or good check, all items sold AS-IS, WHERE-IS. No warranties are expressed or implied by Montana Auction Company. It is the buyer's responsibility to inspect all items and all statements and environments made on sale day by auctioneers and sellers take precedence over any and all advertising. Information given is believed to be true and correct to the best of the seller's knowledge. All potential buyers are urged to inspect items prior to bidding. All sales are non-refundable and buyers are responsible for payment. Items once marked sold, not responsible for accidents.

**MONTANA AUCTION COMPANY**  
DAN GOSS, AUCTIONEER  
12302 CR 341W • SIDNEY, MT 59270  
406-480-2778

# Christmas Sale!

## Boxed Beef Sticks

2½ lb. box (40-50 per box) ..... **\$20**

## Boxed String Cheese

(individually wrapped)..... **\$12**

## Smokey Snack Sticks

16 oz. (11-12 per package)..... **\$12**

**Support your 4-H program by planning now to place an order when a member contacts you or call 433-1206**

By popular request, Richland County 4-H Clubs will be taking orders through Nov. 15<sup>th</sup> for the same great tasting beef & cheese sticks offered during our Spring Citrus Sale. These will make great gifts for those hard-to-buy-for on your Christmas list!

Deliveries will be made the week of November 27<sup>th</sup>

# FAIRVIEW WARRIORS

## QUARTER FINAL FOOTBALL PLAYOFFS

### Saturday, Nov. 4 • 1 pm • at Drummond/Phillipsburgh



(L-R): Manager Lak Klokter, Asst Coach Josh Taylor, Easton Hopes, Sterling Sannon, Alex Schriver, Trevor Karst, Luke Lebsock, Gabe Schipman, Austin Calvert, Dylan Elletson, Brady Buxbaum, Braiden Taylor, JJ Klein, Carson Cayko, Jesse Selting, Paul Hardy, Mason Schirman, Rex Reynolds, Tom Neu, Bryce Neu, Steve Rice, Ethan Neu, Hunter Whitmus, Cody Asbeck, Kaden Skogas, Alex Young, Tyler Woertink, Parker Sian, Will Smies, Head Coach Levi Seitz, Manager Gerit Johnson. **Not pictured:** Asst. Coach Keith Bieber.

406-742-5224

Water Hole #3

Fairview, Montana

416 S. Ellery

**THE OASIS GREENHOUSE**

3½ miles north of Fairview on Hwy 58

701-744-5752

[oasis@midrivers.com](mailto:oasis@midrivers.com)

**GOOD LUCK!**

From the Fairview School Staff

**FAIRVIEW WARRIORS**

GOOD LUCK FAIRVIEW WARRIORS!

Call 742-5261 for Your Appointment Today!

**MONDAK FAMILY CLINIC**

An Outreach Service of SIDNEY HEALTH CENTER

M-TH: 8:30am - 5pm  
Fri: 8:30am-Noon

304 S Ellery Ave • Fairview, MT

**NEU CONSTRUCTION, INC.**

- Oil Field Roads & Locations
- Reclaim Work
- Gravel & Scoria Hauling

Fairview, MT

**406-742-5549**

[neuconst@midrivers.com](mailto:neuconst@midrivers.com)

**POWDER KEG**

EST. 1972

Family Dining

Open 4:30 pm Tue-Fri  
2 pm Sat & Sun

Fairview • 406-742-5180

**NEU'S SUPERVALU**

- Grocery • Bakery
- Fresh Meat • Beer
- Ice • Snacks
- Full Service Deli

406-742-5441

303 S Ellery St • Fairview, MT

**Mon-Kota, Inc.**

Fertilizer & Irrigation Sales & Service

**Reinke plus program**

Platinum Plus Certified

Fairview, MT • 701-844-5300

**Reinke**

MORE RIGHT THAN RAIN

**Merchants Bank**

Open 9am - 4pm  
Monday - Friday

Box 465 • Fairview, MT  
406-742-5203

**FDIC**

Equal Housing Lender

**HURLEY'S OILFIELD SERVICES**

- Potable Water • Sewer System
- Loaders • Communications
- Backhoe • Trucking
- Skid Houses • Porta Potties

Dispatch: 701-844-1234

Fairview, MT

**HOTEL ALBERT**

Lounge & Casino

419 S. Ellery  
Fairview, MT

406-742-5164

**GOLDRUSH CASINO**

504 South Ellery  
Fairview, MT

Lounge: 742-4653 • Office: 742-4654

Open From 10am - 2am

**DOUBLE BARREL SALON & CASINO**

Open 10am - 2am Daily

401 Ellery Avenue  
Fairview, MT  
406-742-8110

**Steakhouse Hours:**  
Sun-Thurs: 5-9pm  
Fri & Sat: 5-10pm

**Sidney Sugars**

INCORPORATED

**Richland Pump & Supply**

(406) 488-8706  
David Williams  
Cell (406) 489-8706  
Scott Ramus  
Cell (406) 489-8707  
1511 S Central Ave • Sidney

**pepsi**

**BLUE ROCK PRODUCTS CO.**

501 9th Ave NE, Sidney  
406-433-3403

**Tri-County Implement**

Sidney, Montana  
406-688-4400

2429 W. Holly St.  
**406-488-4400**

**TRIPLE DISPOSAL**

776-2500  
SAVAGE, MT

**Millers Garbage Service**

Savage, MT  
406-776-2334



The Easiest Place

For Kids to Get Beer

..is right next to the milk.

TALK IT UP, LOCK IT UP!

A message from District II Alcohol & Drug Prevention



# Johnson Marks 20 Years With the Winners Pub

Employee loyalty is really hard to find but Kevin Johnson has been loyal to the Winners Pub in Sidney since it opened 20 years ago.

Kevin was looking for a change from Path and the Pro Shop when Lola Hansen asked if he wouldn't like to try bartending at the new Winners Pub about to open across the street from his family's business, Johnson Hardware. She recognized his interest in sports as a friend and a customer of the South 40. "Although he had no experience as a bar tender, I convinced him that he could back out if he wasn't liking it," she said. "He's been our rock ever since."



Kevin Johnson

When Hansen asked him to consider the position, Johnson said he made a list of plusses and minuses and decided he was going to try it. "It's the best decision I ever made," he said. "I never thought I'd be here for 20 years. Lola saw something in me that I didn't see in myself and I was pretty much the first employee they hired."

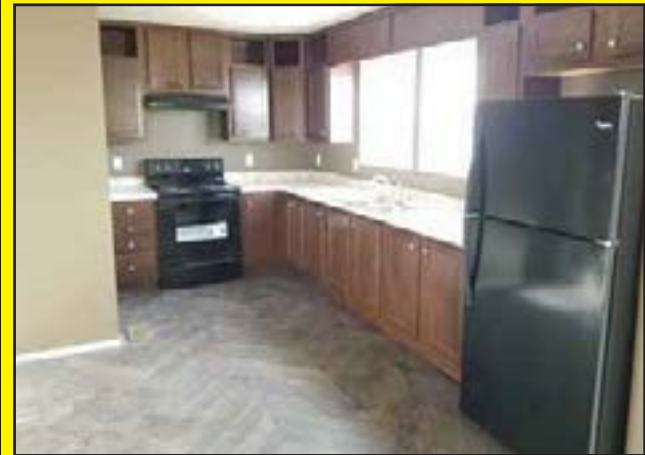
"They treat me really good and I really love my job. I get to watch sports and talk about it," Johnson said about why he had stayed so long. Johnson enjoys taking care of his customers and credits great co-workers with making his job easy.

Hansen says Johnson is always on top of the sports boards and makes sure the right games are playing on all the TVs, whether it's football, baseball or hockey. He has a fantasy team and attends Sidney Eagle events so he knows those players and coaches as well.

Johnson is the son of Hubert and the late Lucille Johnson. He has been married to Jodi for 15 years and their daughter Ashley is a Sidney High graduate working at DeNardos while contemplating college choices.

The Winners Pub is celebrating its 20th anniversary this weekend. Stop by on Kevin Day, Sunday, November 5th for some cake and congratulate Kevin Johnson on his 20 years at the Pub.

# COMFORTABLE LIVING!



2015 Crest 8814

16' x 80',

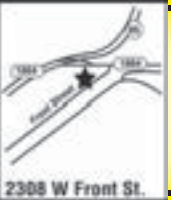
3 bed/2 bath

\$51,995

plus setup & tax where applicable



Mon: 9am - 7pm • Tues-Thurs: 9am - 6pm  
Fri: 9am - 5:30pm • Sat: 9am - 4pm  
2308 West Front St. Williston, ND | 701-572-2590



FREE DELIVERY WITHIN 100 MILE RADIUS!

# Roughrider TKD Tournament Results



Pictured (L to R) Back: Master Nanette Bergerson, Henry Colvin, Ivy Colvin, Dresden Wesley and Rob Bergerson. Front: McKenzie Bundy and Maiah Goff.

Eastern Montana Martial Arts Academy attended the Roughrider TKD Tournament Saturday, October 21st in Mandan, ND. Sidney & Culbertson students were among the participants and placed as following:

- Maiah Goff: 2nd Breaking.
- Henry Colvin: 4th sparring, 4th pattern.
- Ivy Colvin: 4th pattern.
- Dresden Wesley: 1st Breaking, 2nd pattern, 2nd sparring.
- Rob Bergerson: 3rd Pattern.

Winners


PUB

20

YEAR

ANNIVERSARY


NOVEMBER 3-5



KEVIN'S DAY

NOVEMBER 5

He'll be giving away Gifts and Cake during Sunday Games (while they last) Stop in and congratulate him on 20 years at The Pub!



EVERYONE REGISTERS FOR A HAWAIIAN GETAWAY WITH \$500 TRAVELER CASH!

November 3rd 10-For-10

November 4 Munchers following Playoff Game





22 HDTVs 1997 to 2017 Casino




406-433-4636 | 804 South Central • Sidney, MT



Richland County Ambulance Service

JOB FAIR



November 8th AND December 6th

6:00 PM - 9:00 PM

Sidney Health Center ER Conference Room



Come learn about opportunities with the Ambulance Service and the upcoming EMT Training Class.

216 14th Ave SW • Sidney, MT • (406) 488-2180  
www.sidneyhealth.org