



The Roundup

PRSR STD
U.S.
POSTAGE
PAID
The Roundup

(406) 433-3306 or 1-800-749-3306
Fax (406) 433-4114
e-mail address:
roundup@esidney.com

Business Office:
Located at 111 West Main
Sidney, MT

Mailing Address:
P.O. Box 1207
Sidney, MT 59270

Wednesday, February 22, 2012

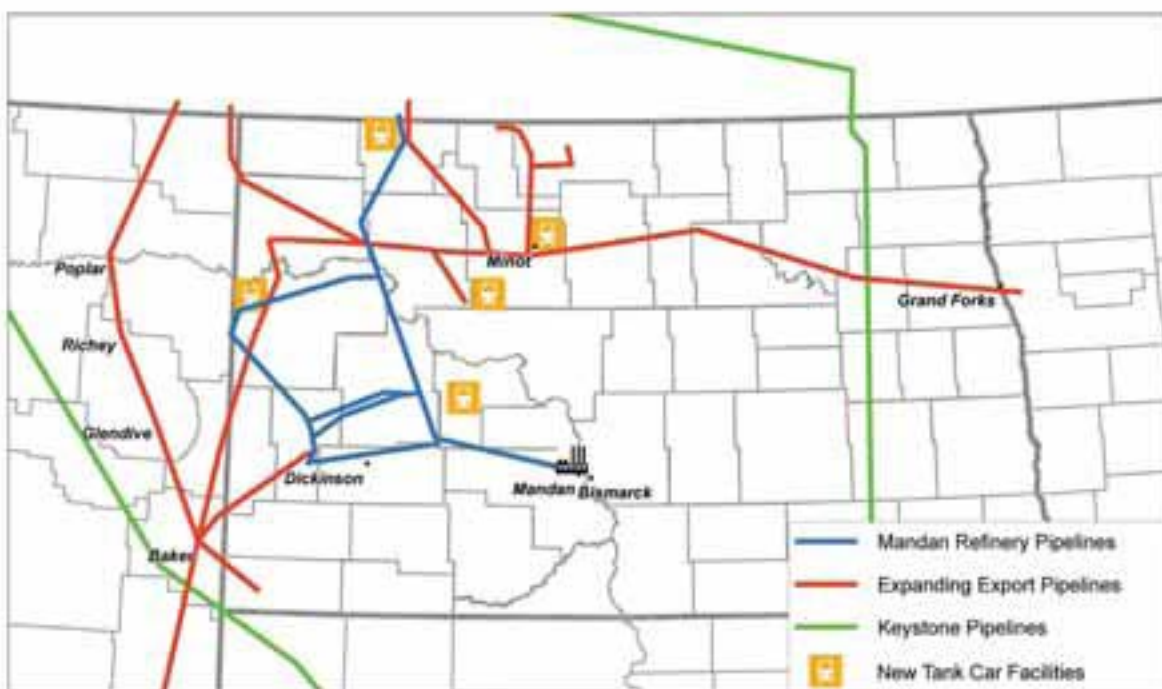
Volume 38 • Number 1

“Shared Strength” Community Concert Set For March 18

Oil Pipeline Planned To Cross Lake Sakakawea

EXPANDING OIL PIPELINES

Map from North Dakota Pipeline Authority



A Community Concert, “Shared Strength,” presented by the community, for the community, will be held at 2 p.m. Sunday, March 18 at St. Matthew’s Parish Center, Sidney.

According to the organizers, the concert will be a musical program created to reaffirm the shared strength this community possesses in the midst of so many changes in all our lives. Their sincere goal is to help remind each other why our community is a special place to live.

In addition to the concert, there will be a silent auction with the proceeds going to the Arnold Family Educational Fund. Anyone wishing to donate items for the auction may call Leann Pelvit at the MonDak Heritage Center, 433-3500.

Help is also needed for set-up, cleanup and other tasks, both on Saturday and Sunday. Groups or individuals who would like to help are asked to call Ginny Herrick at 433-4016.

Nathan Langwald Benefit Set For March 2-3

A Rummage Sale will be held on Friday, March 2, from 4-7 p.m., and Saturday, March 3, from 9 a.m.-2 p.m. at St. Matthew’s Parish Center, Sidney.

Proceeds from this event will be used to defray expenses that the Nathan Langwald family has had as a result of his head injury in August.

If you have questions (or items to donate) call Judy Reid at 488-7754 or Shelley Kessler at 488-3125.

In lieu of participating in this event, you might also want to make a donation to the “Nathan Langwald Benefit Fund” at Richland Federal Credit Union.

Child Find/Developmental Screening

A Child Find/Development screening will be held at Central School, 200 3rd Ave. SE, Sidney, Monday and Tuesday, March 5-6 from 2:30-7 p.m. and again Monday and Tuesday, April 3-4 from 2:30-7 p.m.

To have your child included in the screening, appointments are necessary and will be taken by calling the Sidney Schools administration office at 433-4080 during school hours and 488-8134 in the evenings and weekends.

You are encouraged to bring your child even if they attended last year. The screening is provided at no cost as a public service of the Sidney Public Schools. For further information, call Michelle Monsen at 433-4251.

Training Course: Customer Service In A Fast Growing Economy

The Williston Area Chamber of Commerce will be hosting the upcoming training class “Customer Service in a Fast Growing Economy” Thursday, Feb. 23 from 3-5 p.m. at Target Logistics Bear Paw Lodge meeting room, north of Williston on Hwy. 2 on the east side of the road.

The class will be presented by Luanna Fisketjon, Mayville State University.

Your employees will learn tactical skills necessary to delight customers in our fast paced business environment. This class is ideal for front line employees in retail, financial, reception, etc.

Chamber Members are free and non-members are \$10.

Call Megan at the Chamber, 701-577-6000 or email Megan@WillistonChamber.net.

By Jodi McPherson

Major pipeline company, Enbridge, recently announced plans to build a Bakken oil pipeline crossing from one side of Lake Sakakawea to the other, but will need an environmental go ahead from several federal agencies before it can be built.

Enbridge, a Canadian pipeline company, is already a major transporter of North Dakota oil. The pipeline would be built 36 miles east

of Watford City, boring under the lake, to a point 9 miles southeast of Tioga. From there oil would go into a second east-west pipeline Enbridge is building alongside its original line over to Berthold and eventually to a distribution hub point in Clearwater, MN.

The request will be considered by state and federal regulators. If approved, Enbridge would like to have the pipeline operating by the end of 2013. It would cost

\$136 million to build, and would be capable of carrying up to 100,000 barrels of oil a day.

Before they can build the line across the lake, the company must clear an Environmental Assessment being conducted now by the Bureau of Land Management (BLM).

About three miles of federal land are involved in the proposal therefore BLM will have a large part in the permitting of the pipeline.

The U.S. Forest Service and the U.S. Army Corps of Engineers are cooperating with the environmental document and pipeline permitting process.

The Enbridge line is similar to a recently commissioned Four Bears line, which is expected to remove a great amount of trucks traveling every day on North Dakota Highways 22 and 85. Pipelines would potentially help to make roadways safer by decreasing truck traffic.

Lake crossings are a controversial proposal so the agencies will need to determine if they are a good idea. Newer engineering methods have improved the safety of pipelines in water and wetlands.

The BLM will look at the potential for oil spills, the effect of drilling under Lake Sakakawea, impact on plants, wildlife, cultural and historic sites, and how the construction will affect the local communities.

There are currently a few pipelines across Lake Sakakawea. Tesoro and Enbridge, at the far west end of its east-west line, cross with crude oil lines; WBI and Northern Border cross with natural gas lines; and Dakota Gasification Co. crosses with carbon dioxide.

BLM is taking public comments on Enbridge’s proposed Sanish line until Feb. 29. Lowell Hassler is the BLM’s project manager in its Dickinson office. <http://www.blm.gov/mt/st/en.html>.

Slayer Games Grand Opening March 1

Slayer Games is the newest addition to the Yellowstone Marketplace in downtown Sidney.

The Slayer Games store focuses on buying, selling and trading new and used video games and consoles. They have planned a grand opening of the store on March 1.

Slayer Games owner Jeremy Mills, brother of Sandwich Artist co-owner Amy Armstead, saw a need for a store of this type in the Sidney area.

“People want to be able

to buy, sell or trade both new and older games,” commented Mills.

Currently, the store has games for Wii, Xbox 360, PSP, PS2 and PS3. Over time the inventory and variety of games will grow as people trade and sell their games. “We plan to carry PC games, Nintendo DS & 3DS and the new Sony Vita console,” said store manager Chris Paynter. “We will also carry classic games for Nintendo, Nintendo 64, Super Nintendo, Atari and Sega Genesis eventually.”

Some of the newest game titles they have available are *Final Fantasy 13*, *Never Dead*, *Kingdoms of Amalur: Reckoning* as well as the much anticipated *Twisted Metal* release coming soon.

The store also plans to have consoles set up for people to demo the games. They currently have a Xbox 360 and Xbox 360 Kinect set up for customers to try out.

“At Slayer Games we want to be one-on-one with the customer, to be able to give them advice on games and even the latest tips on how to beat a game. We want to be the gamers friend. Stay a while, talk and chat about your game. Its going to be about the gamer, not us,” stated Mills.

Stop by to see the latest titles Slayer Games has to offer. Slayer Games is located in the Yellowstone Marketplace, 102 N. Central Ave., Sidney.



Pictured above: A customer plays Xbox 360 Kinect Sports in the Slayer Games store.



McKenzie Smith and Bryan McDowell

Smith-McDowell Announce Engagement

Nancy Vaira and Duane Smith, Sidney, are pleased to announce the engagement of their daughter, McKenzie Mariana Smith to Bryan Joseph McDowell, son of Peggy Errecart and Ben McDowell, Sidney.

Both are graduates of Sidney High School and work at RestorX of Montana, Sidney.

A June 9 wedding is planned at the Assembly of God Church, with a reception to follow at the Sidney Country Club.

Trading Post Has New Owners New Location

Jerry and Joanna Hughes are fulfilling a dream by purchasing the Trading Post and moving it to 111 E. Main, downtown Sidney. The couple has always enjoyed yard sales, shopping at second hand stores, going to auction sales and helping others sell their things. They also enjoy meeting people and dickering. "It's always been fun for us," Joanna said. "This is a natural extension for us, a dream come true," Jerry added. The Hughes family moved to Sidney in 2006, when Jerry accepted a position at Busch Ag. Joanna has been a stay-at-home mom to 7-year-old Jerome who is autistic.



Jerry, Joanna & Jerome Hughes

The store is a great fit, with Joanna able to work days and Jerry coming in to finish the late afternoons and evenings. Jerome receives the necessary stability in his life with an area designed just for him. Rounding out the family are two friendly dogs, Cocoa and Coffee.

The Trading Post has always been more than just a store. People would come in to sit by the fire and enjoy a cup of coffee and a chat. Hughes are continuing that tradition, with the coffee always on and a fireplace in the works for the near future. "We want it to be a store and a neighborhood place where people can come in, have a cup of coffee and visit," Jerry stated.

Hughes purchased consignment and inventory, including the pawn from Donna Hunsbedt. They're always looking for new merchandise and wish to have items to satisfy interests of all kinds. They will be expanding the gun section and in-

vite customers to let them know of any specific needs and wants. "If we don't have it, we'll try to get it for you," Jerry said. They're planning to expand the pawn as well. All pawn items are insured and secured. Some individuals use the pawn shop as a safe storage option. Consignment items are the lifeblood of the store. Contact Jerry or Joanna about consigning your items. They will even come to your location to give estimates. Home based businesses are invited to contact them about potential display space as well.

Reaction has been very positive from the community. "People are so happy that the store isn't going away. There's a need for this kind of store here," Joanna said. With their great downtown location, Hughes plan to join the Chamber of Commerce

and participate in all the fun events that take place throughout the year.

Very soon, The Trading Post will also be an internet store, providing even more opportunities for the buying and selling public.

Jerry and Joanna are grateful for the opportunity to turn their dream into a reality. "Donna has been an invaluable source of strength and advice," Jerry stated. "She's done more than her part to make this transition easy."

They're also thankful to Barb Connor for continuing her consignment of the back bar from the old Stockman Bar in Fairview. Building owner B&B Builders also receives lots of

praise from the Hughes family. "They've been wonderful. They've bent over backward to get us into this building," Jerry stated. Hughes also wished to thank Stockman Bank for being so great to work with, and the entire business community for being so receptive and helpful.

The Trading Post is open Monday-Friday from 10 a.m.-7 p.m. and Saturdays from 10 a.m.-5 p.m. Their phone number is 406-433-7676.

Richland County Baseball
Sign-ups will be held on
Tuesday, Feb. 28
& Wednesday, Feb. 29
and again on
Tuesday, March 6
& Wednesday, March 7
6-8 p.m. at Westside School

Player fees are as follows:
T-ball & Rookie - \$40.00
Minors & Majors - \$50.00
Babe Ruth - \$100.00
Legion - \$250.00
Please bring insurance cards to sign-ups.

Let's thrive! **Thrivent Financial for Lutherans**

Does retirement feel like a distant dream?

Now is the time to maximize your retirement savings with a Traditional or Roth IRA at Thrivent Financial.

Call today.

Harvey F. Senn
LUTCF, FIC
Regional Support Associate
CA Insurance ID No. 0E58464
1050 S Central
Sidney, MT 59270
Office: 406-433-6143

Ron Gebhardt
FIC
Financial Associate
1050 S Central
Sidney, MT 59270
Office: 406-433-5287

Insurance products issued or offered by Thrivent Financial for Lutherans, Appleton, WI. Not all products are available in all states. Securities and investment advisory services are offered through Thrivent Investment Management Inc., 625 Fourth Ave. S., Minneapolis, MN 55415, 800-847-4836, a FINRA and SIPC member and a wholly owned subsidiary of Thrivent Financial for Lutherans. Thrivent Financial representatives are registered representatives of Thrivent Investment Management Inc. They are also licensed insurance agents of Thrivent Financial.

• NOT A DEPOSIT • NOT FDIC INSURED • NOT INSURED BY ANY FEDERAL GOVERNMENT AGENCY • NOT GUARANTEED BY THRIVENT FINANCIAL BANK • MAY LOSE VALUE

For additional important disclosure information, please visit Thrivent.com/disclosures.

21268C R9-11 © 2011 Thrivent Financial for Lutherans 201103678

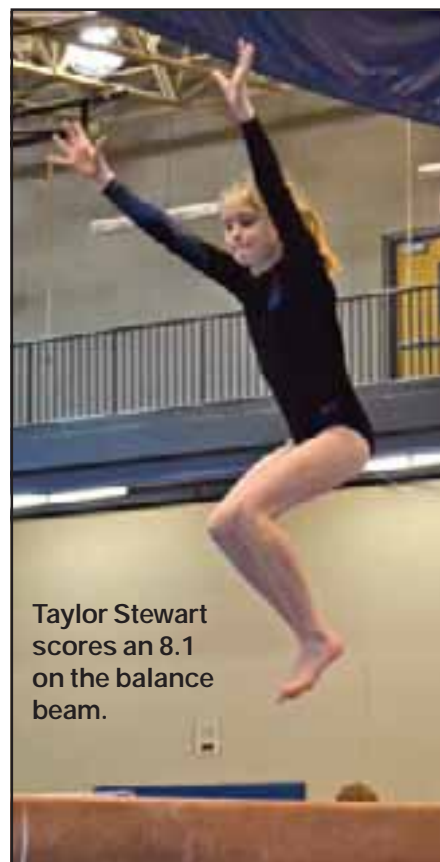
Gymnasts Compete In Jamestown

The Optimist Winter Escape USA Gymnastics Meet
Feb. 18, 2012

Level 4: Bethany Wells: Vault-8.1 Bars-8.8 Beam-7.9 Floor-7.95 All-Around-32.75 Taylor Stewart: Vault-8.15 Bars-8.5 Beam-8.1 Floor-8.0 All-Around-32.75, Zoe Morrill: Vault-9.35 Bars-8.35 Beam-8.5 Floor-8.3 All-Around-34.50, Becca Deming: Vault-8.65 Bars-8.3 Beam-8.2 Floor-8.2 All-Around-33.35



Sidney Gymnasts (L-R) Becca Deming, Zoe Morrill, Taylor Stewart and Bethany Wells.



Taylor Stewart scores an 8.1 on the balance beam.

BINGO, BILLIARDS & DART SUPPLIES

Complete Line of:
Bingo Supplies
All Major Brand Name Pool Cues
Pool & Billiard Accessories
Dart Sets & Accessories
Poker Chips, Cards & Dice

Lots of New Merchandise Just Arrived!

Selling New & Used:
Pool Tables • Pin Ball Machines • Jukeboxes
Video Arcades • Foos Ball Tables

203-05 Main Street, Lower Level, Williston
Same Entrance As Veteran's Affairs & J's Fashion Threads
572-6254 or 1-800-732-0962
Thursday - Saturday 1:30 pm - 5:30 pm
Call for after or before hours appointments

We Recover, Repair & Recondition All Pool Tables!
Locally Owned & Operated by Chuck Joseph

Rauschendorfer Construction
For All Your Steel Building Needs

406-433-7767 • 406-489-1880

NOW SUPPLYING FRAMING AND ALUMINUM MATERIALS FOR SALTWATER AND TREATER BUILDINGS

MonDak Energy Alliance Schedules Meeting To Preview Upcoming Industrial Developments

The MonDak Energy Alliance will preview upcoming industrial developments at their next meeting on Thursday, March 1 at 7 p.m. (CT) in the Courtyard at the Airport

International Inn, Williston. All parties interested in business and energy development and community growth in the MonDak region are encouraged to attend.

There will be a social mixer with heavy hors d'oeuvres at 6:15 p.m. Bring your business cards and plan on networking. There is no charge for admission.

Dakota Oil Processing, LLC will provide an overview of the company's progress. Dakota Oil Processing, LLC was established with a purpose to build a diesel refinery in Trenton.

There will be presentations on activity in the region of the Bakken oil play. Oneok Partners has been invited to provide an update on their growth activity. Halliburton will show the processes involved in fracturing a well. In addition, Captain Alan Billehus, North Dakota Highway Patrol, will discuss what's fact and what's fiction on the crime rates in the Williston area.

The MonDak Energy Alliance is a consortium of public and private interests from eastern Montana and western North Dakota that seeks to act as a catalyst for business and industrial projects that can build and diversify the economy of the MonDak region by leveraging its tremendous energy resources. The Alliance seeks to de-

velop oil, coal, wind and bio-fuels and to take advantage of the synergies afforded by developing them together. Their website is at: www.mondakenergy.com.

For membership information, please contact Ken Callahan at 701-572-1620 or email Ken.Callahan@mdu.com.

To register online for the event, please visit www.willistondevelopment.com/event.aspx.

The Alliance is co-chaired by Williston Mayor Ward Koeser and Sidney Mayor Bret Smelser.

For more information contact the Williston Economic Development office at 701-577-8110.

- Agenda Update**
- 5:30 p.m. - Board Meeting
 - 6:30 p.m. - Social/Mixer (heavy hors d'oeuvres)
 - 7 p.m. - Call to Order - Welcome and Introductions: Williston Mayor Ward Koeser, Co-chair
 - 7:05 p.m. - Mon-Dak En-

ergy Alliance Update: Sidney Mayor Bret Smelser, Co-chair

7:10 p.m. - Oneok Partners

7:30 p.m. - North Dakota Highway Patrol – Fact and Fiction on the Crime in the Williston Area: Alan Billehus, North Dakota Highway Patrol captain, Williston

7:50 p.m. - Halliburton Energy Services – Fracing Process: Jonathon Mack, Halliburton district technology manager, Williston

8:10 p.m. - Dakota Oil Processing, LLC – Project Overview: Chester Trabucco, Dakota Oil Processing CEO, Trenton

8:30 p.m. - Panel Discussion: Program speakers will form a panel to answer the audience's questions.

9 p.m. - Adjourn
The meeting is open to the public and there is no registration fee to attend. To save time at the meeting please register in advance at <http://www.willistondevelopment.com/events.aspx>.

New World Sugarbeet Production Record Set Using A Betaseed Variety

World record sugarbeet grower, Ben Abatti, Jr., Baja Farms, was honored at the California Beet Growers annual meeting for setting a new yield record using a Betaseed, Inc. variety.

Baja Farms planted Betaseed's 4521R sugarbeet variety in a 70-acre field that averaged 78.71 tons per acre, with 15.89% sugar content. Overall, Abatti's crop produced 25,014 lbs. of sugar per acre, breaking the old record by 500 lbs. Knowing the land and matching it to a variety that works, is key in growing a top crop.

"I have used various Betaseed varieties for the past ten years, using the 4521R variety for the past four years. I conduct my own in-house trials before planting large acres of any variety. I chose this variety of seed because it out-performed all other varieties under varying conditions," said Ben Abatti, Jr., Baja Farms.

Betaseed's research and development team plants several trials per market so that approved varieties of sugarbeet seed are available at planting time. Growers using these varieties have experienced strong emergence and high-yielding harvests throughout the years.

"4521R is just a great workhorse that does well, yielding tremendous tonnage and sugar content. I would strongly recommend this variety to anyone wanting to increase their bottom line. From the strong vigor shown at emergence to the high tonnage harvested at the end. This plant produces results! It is truly an honor to hold this world record," said Ben Abatti, Jr. with his family by his side as he received the award.

World record sugarbeet crops are not new to Betaseed. In 2002, Betaseed

variety 4430R yielded over 20,773 lbs. of sugar per acre to set the world record that stood for many years.

Betaseed, Inc., headquartered in Shakopee, MN, is the market leader in sugarbeet seed research and development. Known for strong variety performance, Betaseed has had a longstanding commitment to

the beet sugar industry focusing its research on developing new varieties to improve the efficiency, and profitability of sugar production for over 40 years.

For further information about Betaseed, contact Kristen Iacarella, Corporate Marketing Manager at 952-233-6937 or visit betaseed.com.

First Annual Bakken Brew Fest Scheduled

The Sidney Area Chamber of Commerce and Agriculture will host an exciting new event this year: the Bakken Brew Fest, scheduled for Saturday, March 10 at the Richland County Fair Event Center. Doors open at 7 p.m. and ticket holders will then enjoy an evening of tasting new microbrews, sampling hearty hors d'oeuvres, and listening to live music provided by the Clintons from Bozeman. The event will feature over 25 microbrews on tap, developed by regional breweries.

"Attendees will have the opportunity to sample many different microbrews," says Cami Skinner, Sidney Chamber president and one of the organizers of this event. "Most of the breweries represented are from Montana. The Ranger Lounge will cater the food, which will complement the beers on tap."

She adds, "Everyone who attends will receive a signature beer tasting glass bearing the Bakken Brew Fest logo." The Clintons, a band from Bozeman, will provide music for listening and dancing. "The Clintons have a pop rock/country flavor," Skinner comments. "We'll have tables set out at the Event Center but we'll also have a dance floor so people can dance if they wish."

The idea for this event came from many sources. The Chamber took the various ideas and organized them into this new event, the Bakken Brew Fest. Members also decided to use the new event as a venue to give something back to the community.

"We received lot of interest from multiple people to host an event like this," Skinner comments. "The brew fest is a great setting to bring people together, while also providing the Chamber with an opportunity to return something to the community. This year a portion of the event proceedings will benefit the Sherry Arnold Scholarship Fund."

Skinner urges people to purchase tickets in the near future as the Chamber will limit the number of attendees. "The response has been phenomenal so far," she says. "Since we will only sell a limited number of tickets, don't delay in your purchase. General admission costs \$50 per person, and we also offer VIP tables of eight or ten people."

People can obtain more information about VIP tables from the Sidney Chamber, 406-433-1916.

Interested people can purchase tickets from the Chamber and from the Ranger Lounge in Sidney.

WHETHER IT IS VERY SIMPLE, OR ELEGANTLY SOPHISTICATED, A LASTING MEMORIAL REPRESENTS A LIFE THAT HAS TOUCHED US



Contact us now so we can help you find a monument or grave marker to dedicate to your loved one.

Fulkerson Funeral Home
It's All About Saying Goodbye

315 Second St. NW Sidney, MT 59270 406.488.2805

www.fulkersons.com • email: ffh@fulkersons.com

Cattle Men...



- OB Supplies
- Panels
- Purina Mineral Tubs
- Mineral Feeders
- Hi-Heg Claving Pen
- Calf Warming Box
- SturD Round Bale Feeders
- Colostrum, Electrolytes
- Z Tags: Any Color - Any Amount

Williston Saddlery

"Your local Purina Mills Feed Dealer"

Hwy 2 West, Williston, ND • (701) 572-2267



Purina Dealer

- Trailers • Saddles
- Complete Feed Line
- Livestock Equipment
- Animal Health Products

*We are like a good Horse
We aim to please*



"Time Out" \$1.00 off
4-6 p.m. Daily All Beers

WEDNESDAYS
LARGE PIZZA & PAIL OF BEER \$19.99

FRIDAYS
18 WINGS & PAIL OF BEER \$19.99

Play Buzztime Trivia!

New Vegas Line Games!

Match up Fruits, Dollars & 7's • Bonus Rounds

Win Plenty Of Cash!

Part Time Bartender Position Open!

22 Plasma TVs
for all sporting events plus

SPASS

Sounddog Speakers right at your table!

QUICK STADIUM FOODS AVAILABLE TIL CLOSE EVERY NIGHT!



Winners PUB SPORTS BAR & Casino
804 S. Central Ave

For all your Farm/Ranch, Recreational, Residential, and Commercial needs.

Alan Seigfreid
Amanda Seigfreid

Missouri River REALTY

Jim & Janice Knudsen 120 2nd St. N.E. • Sidney Mt. 59270
Broker/Owners (O) 406-433-3010 • (C) 406-489-3010
email: alans@midrivers.com
Website: www.missouririverrealty.com

Yellowstone Chiropractic Clinic

(406) 433-4757 222 2nd. Ave. SW
1-866-433-4757 Sidney, MT 59270

Dr Ryan Laqua
Chiropractic Physician

• Sports Injuries • DOT Physicals
• Personal Injuries & Pain Conditions

Blue Water Drug Collections

Breath Alcohol Testing
Urine & Hair Test Collection

Mobile service or by appointment at
Yellowstone Chiropractic Clinic
222 2nd Ave SW • Sidney
406-480-1105 • Beth - 406-480-1183 • Marilyn
406-488-1153 • After Hours
bluewaterdrugcollections@gmail.com

The Roundup

Do you have news or photos from McKenzie County you would like in The Roundup?

CONTACT:
Kathy Taylor in Watford City
701-842-6188

Don't waste your recruitment \$\$\$

Reach 22,000 Readers In the MonDak Region Every Week

The Roundup

111 West Main • Sidney, MT
406-433-3306
www.roundupweb.com

Mary Ann Meschke Minch, 89, Sidney, MT

Funeral services for Mary Ann Meschke Minch, 89, Sidney, MT, were at 10 a.m. Tuesday, Feb. 21, 2012, at the Pella Lutheran Church, Sidney, with Pastor George Karres officiating.

Interment was in the Sidney Cemetery, Sidney, under the direction of the Fulkerson Funeral Home, Sidney.

Remembrances and condolences may be shared with the family at www.fulkersons.com.

Mary Ann died early Friday morning, Feb. 17, 2012 at the Sidney Health Center, Sidney.

LeRoy "Salty" Prichard, 87, Sidney, MT

Funeral services for LeRoy "Salty" Prichard, 87, Sidney, MT, were Friday, Feb. 17, 2012 at St. Matthew's Catholic Church, Sidney, with Father Jim O'Neil presiding.

Wake services were at 6 p.m., Thursday, Feb. 16, 2012, at the Fulkerson Memorial Chapel. Interment was in the Sidney Cemetery, Sidney, under the direction of Fulkerson Funeral Home, Sidney.

Remembrances and condolences may be shared with the family at www.fulkersons.com.

Salty died on Saturday, Feb. 4, 2012 at the Sidney Health Center Extended Care Facility.

John C. Steinbeisser, 70, Sidney, MT

Mass of the Christian Burial for John C. Steinbeisser, 70, Sidney, is at 10 a.m. Thursday, Feb. 23, 2012, at St. Matthew's Catholic Church, Sidney, with Father Jim O'Neil as presider.

Wake services are at 5:30 p.m., Wednesday, Feb. 22, 2012, at the Fulkerson Funeral Home, Sidney.

Interment will be in the Sidney Cemetery, Sidney, under the direction of the Fulkerson Funeral Home.

Remembrances and condolences may be shared with the family at www.fulkersons.com.

John died Saturday, Feb. 18, 2012, at the Sidney Health Center, Sidney.

Dennis Eggum, 65, Sidney, MT

Mass of the Christian Burial for Dennis Eggum, 65, Sidney, MT, was at 10 a.m. Monday, Feb. 20, 2012 at St. Matthew's Catholic Church, Sidney, with Father Jim O'Neil presiding.

Wake services were at 6 p.m., Sunday, Feb. 19, 2012, at the Fulkerson Funeral Home Chapel, Sidney.

Interment was in the Richland Memorial Park Cemetery under the direction of Fulkerson Funeral Home, Sidney.

Remembrances and condolences may be shared with the family at www.fulkersons.com.

Dennis died at his home on Monday, Feb. 13, 2012 in Sidney.

Charles "Buddy" Schow, 65, Sidney, MT

Funeral services for Charles "Buddy" Schow, 65, will be at 10 a.m., Saturday, Feb. 25, 2012 at the Fulkerson Memorial Chapel, Sidney, MT.

Interment will be in the Sidney Cemetery under the direction of Fulkerson Funeral Home, Sidney.

Remembrances and condolences may be shared with the family at www.fulkersons.com.

Buddy passed away on Friday, Feb. 10, 2012 at the Eastern Montana Veterans Home.

STATISTICS

Lake Water Level Reports

	Fort Peck	Sakakawea
Current Elevation	2234.4	1838.2
Last Week's Elev.	2234.7	1838.4
One Year Ago	2235.2	1838.8
Release For Day (C.F.S.)	12,100	23,500

Watford City Weather Data

Source: North Dakota Agricultural Weather Network

Date	High	Low	Precip.
Feb. 13	35	2	0.00
Feb. 14	39	20	0.00
Feb. 15	40	20	0.05
Feb. 16	32	16	0.00
Feb. 17	36	16	0.00
Feb. 18	35	16	0.00
Feb. 19	49	17	0.00

Sidney Weather Data

Source: MSU Eastern Agricultural Research Center

Date	High	Low	Precip.
Feb. 13	42	20	0.00
Feb. 14	39	19	0.00
Feb. 15	37	16	0.08
Feb. 16	37	14	0.00
Feb. 17	36	9	0.00
Feb. 18	49	15	0.00
Feb. 19	47	19	0.00
Average YTD Precipitation			0.56
2012 YTD Precipitation			0.18

79th Annual Lutefisk & Meatball Dinner Saturday

First Lutheran Church, 916 Main, Williston, is having their 79th Annual Lutefisk and Meatball Dinner in the Fellowship Hall, Saturday, Feb. 25. They will be serving from 11 a.m.-6 p.m. or until they are out of food.

Tickets are available at the church office, Monday-Friday. Adults: \$15; students through junior high school: \$6; preschoolers: \$2.

Six hundred men, women and youth are involved in preparing, planning and serving the family style dinner. There will be delivery service until 3 p.m., and take-out service from 11 a.m.-5:30 p.m. Please call the church at 701-572-6363, on the day of the dinner to arrange these services.

Over 3,500 people were served meatballs and lutefisk at the 2011 dinner. The church will be preparing 2,400 lbs. of lutefisk, 1 ton of potatoes for lefse and potatoes for the meal, and 650 lbs. of hamburger for meatballs, and all the trimmings for the dinner.

Millers' Corner
Convenience Store, Deli & Catering

Lunch Plate Specials
Petite Plate \$5.25
Regular Plate \$6.95

Wednesday February 22
Oriental Chicken Stir Fry

Thursday February 23
Meatloaf
Twice Baked Potato

Friday February 24
BBQ Ribs
Scalloped Potatoes

Monday February 27
BBQ Pork
Bistro Mac & Cheese

Tuesday February 28
Swedish Meatballs
Boiled Potatoes

Grill is On Til 6 p.m. Mon.-Fri.

406-433-4041
2201 West Holly, Sidney



EVENTS

SEND US YOUR EVENTS!
THE ROUNDUP: PO Box 1207, 111 West Main, Sidney, MT 59270
406-433-3306, Fax: 406-433-4114
Email: classads@esidney.com

Richland County

Events in Sidney unless otherwise listed. MT Zone.

- Wed., Feb. 22**
7 p.m. — Gambler's Anonymous, Millers' Corner back room.
- Thurs., Feb. 23**
5 p.m. — TOPS, Crestwood NW entrance, Weigh-ins 5-5:30 p.m., meeting 5:30-6 p.m.
6:30 p.m. — Pinochle, Moose Lodge.
8 p.m. — NA meeting, Millers' Corner banquet room.
- Fri., Feb. 24**
5-7 p.m. — Sidney Knights of Columbus Council #3002 Fish Fry. Fridays during Lent, 5-7 p.m. St. Matthew's Parish Center, 310 7th St. SE. \$9/adult.
- Sat., Feb. 25**
9 a.m. & 7 p.m. — AA meeting, Trinity Lutheran Church Education bldg., 214 S. Lincoln.
1 p.m. — Zentangle Art Class, MonDak Heritage Center, \$35/ea. Must pre-register. Call Peggy Kopp, 406-798-3894.
- Sun., Feb. 26**
7 p.m. — AA meeting, Trinity Lutheran Church Education bldg., 214 S. Lincoln.
- Mon., Feb. 27**
12 p.m. — AA meeting, Trinity Lutheran Church education bldg., 214 S. Lincoln.
- Tues., Feb. 28**
7 p.m. — AA meeting, Trinity Lutheran Church education bldg.

McKenzie County

Events in Watford City unless otherwise listed. CST Zone.

- Wed., Feb. 22**
1-4 p.m. — Farmland Leasing Workshop, Courthouse.
5:15 p.m. — Junior Class Organizational After Prom Party Meeting, McKenzie Co. Library, Sanford Room.
- 8 p.m.** — Al-Anon, Sanford Room, McKenzie Co. Public Library.
- Thurs., Feb. 23**
8 p.m. — AA Group, Northern Pump & Compression. Call 770-3603 or 770-2675 for directions or ride.
- Mon., Feb. 27**
5:30 p.m. — Multi-State Concealed Firearms Classes, Civic Center.

A Little Bit Country Wheat Show Proclaimed A Success

By Warren Froelich
NDSU Extension Agent
Williams County

The 59th National Hard Spring Wheat Show is history. Being heavily involved, along with over 20 other farm producers, agri-businesses and NDSU co-workers, I may be a bit biased in proclaiming the event a total success starting with the Bread Fair which focused on teaching area 5th grade students how to make bread. The instruction started by showing the students where the flour comes from and some of the steps in processing wheat into white and whole wheat flours. At first, it appeared a daunting task to get the attention of nearly 350 5th graders. I soon realized that Heather Wisness, NDSU Family Nutrition agent, serving Williams and McKenzie counties, has a special skill-set that captivates the eyes and ears of young people.

Through the use of special audio and visual materials, this very large group of energetic youth, was able to witness, step-by-step, how flour, yeast, water, honey, dry milk and salt

were mixed to form the dough. Each had an opportunity to learn how the dough was kneaded. After the nearly two-hour learning experience, everyone took home a pan of dough for baking.

This was the 29th consecutive year for the Bread Fair. Using a conservative annual participation of 300 we can accurately say over 8,700 students from this area have not only learned the basics of bread making, but are also aware of why wheat is important and how flour is made.

Healthy Soil

All of the educational sessions during the Wheat Show were well attended but Jim Hoorman, Ohio State University, served to captivate the audience with his presentations on soil health. He started by telling us healthy and sick soils each have things in common. He described healthy soils as having: 1) live plants growing year around to absorb energy and 2) healthy microbial populations which process 90% of the energy in soils whereas sick soils tend to have compaction problems, high bulk density, poor water infiltration, poor

water holding capacity, bare soils and low organic matter.

Hoorman stressed the importance of roots and their contribution to organic matter. They are crucial for moisture and nutrient uptake for the plant and are the pipeline of life for both the plant and microorganisms in the soil. He stated that the majority of organic matter comes from roots. But, to achieve root growth we must promote vegetative (above ground) growth. This can be accomplished by mimicking natural vegetation through continuous cropping and the use of cover crops.

Hoorman cited a comparison of organic matter content of conventionally tilled and long term no-till soils in Ohio. He showed conventionally tilled soils in Ohio as having 1-3% organic matter with a plow layer of 8-10 inches and microbial life dominated by bacteria. I found the organic matter level to be quite similar if not a little high in comparison to soil samples area growers submitted to NDSU for nutrient testing. My office no longer receives a copy of the NDSU test results so I cannot make a modern-day comparison since we have shifted to continuous cropping systems. Back in the '80s and early '90s almost all of the soil test reports showed organic matter to be in the 1.5 to 2.5% range on cropland.

Soil organic matter levels on long-term no-till soils in Ohio is now reported to be at the 4-6% levels. This is approaching levels which we find in North Dakota native soils. Hoorman reports other benefits on these soils including high residue on the surface, macropores throughout the soil profile, and the microbial life is no longer dominated by bacteria but now includes plenty of fungi.

There is much more to Hoorman's recipe to increasing soil health. For more details go to our website at www.ag.ndsu.edu/williamscountyextension. On the left side of the page, click [59th Annual Hard Spring Wheat Show](#) and scroll to the bottom of the page for direct links to Hoorman's publications.

Billings MACo Presentation

The Montana Association of Counties held their Mid-Winter Conference in Billings Feb. 15-16. With all of the state and national attention that has been focused on the MonDak region and the oil and gas development, MACo took the opportunity to dedicate a full day of presentations to Eastern Montana and the challenges that they face. With a room full of county commissioners and officials from around the state in attendance, Rep. Matt Rosendale (HD 38) was the first speaker. Rosendale gave a power point presentation that included much of the information he had shared with legislators on a bus tour which he organized through the area in November. The slide show described the increased demands on the area including school systems, roads and water and sewer systems. It also itemized the enormous investment that the industry has made, and continues to make, lending credibility to the long term prospects of the activity. The representative stated that "The largest obstacle to the full development of this resource is the lack of infrastructure to support it. That includes pipelines and rail to transport the product to markets and adequate infrastructure in our communities to support the labor force and ancillary businesses. Ample tax revenue is collected from this production," he stated, "more

needs to be directed back to the communities that generate it".

Sidney Mayor Bret Smelser was next up with commentary about the need for statutory changes in order to direct a larger portion of the revenue generated from the production tax, back to the municipalities. Throughout the area the municipalities typically support 50% of the county's population yet only receive .10% of the production tax. That doesn't provide the communities the revenue that they need in order to address the increased demands on services.

After the two presentations, Commissioners Jim Skillestad (Dawson) and Loren Young (Richland) gave some comments about how they were dealing with the impacts. Later speakers included Tom Richmond, Montana Board of Oil and Gas. Richmond gave a detailed accounting of Montana's oil and gas production and of the fracing process.

MACo executive director Harold Blattie thanked the speakers for attending the conference. After participating in Rep. Rosendale's bus tour he was amazed at the activity and told the audience "you need to see it to believe it". "I am sure that the 2013 legislative session will have legislation focused on this region so this information is certainly valuable as we go forward".

Court Documents Filed In Arnold Case

By Jodi McPherson

Detailed court documents filed in Richland County District Court were released Feb. 17 in the abduction and murder of Sidney teacher Sherry Arnold. Charging documents reveal that Arnold was choked to death the morning of Jan. 7 and is likely to be buried in a remote area near Williston, ND.

The documents reveal that Michael Spell, 22, confessed to investigating agents that he and Lester Waters Jr., 47, abducted Sherry Arnold while she was jogging and killed her.

After Montana's Governor Brian Schweitzer and North Dakota Governor Jack Dalrymple signed extradition requests, both men were extradited on Feb. 14, from Williston, where they had been held, to Sidney.

The documents largely focus on the alleged confession of Spell.

Court documents reveal that on or about Jan. 7, 2012, Waters and Spell restrained Arnold by forcing her to remain in a green Ford Explorer after Spell had grabbed her and forced her into the vehicle on or near Holly Street.

On Jan. 12, Williston police, who were aware of the investigation, located a 1993 dark green Ford Explorer being driven by Waters. He was advised he was being detained for questioning regarding a homicide investigation and that a search warrant for his vehicle was being obtained. Waters later declined to be interviewed prior to speaking with an attorney.

An inventory of Waters' personal belongings included a

receipt from Walmart, in Williston, dated Jan. 7, 2012, at 9:36 p.m. for bread, bologna and a shovel.

On Jan. 13, the FBI located and interviewed Spell in Rapid City, SD. He confessed to the agents that he and Waters abducted Arnold while she was jogging and killed her. He expressed his desire to help locate the body. Spell said Waters was smoking crack cocaine during the entire trip, and that Waters began talking about kidnapping and killing a female.

According to Spell's confession, Waters was smoking crack cocaine on the morning of Saturday, Jan. 7. The same morning Arnold, 43, went missing after an early morning run.

Spell said the grave site, a two or three foot deep hole, was at the end of a shelter belt on an old farmstead in a rural, isolated area outside of Williston.

Evidence collected has been submitted to the federal crime lab for testing. Authorities are continuing to search for Sherry Arnold's body.

Both Waters and Spell are facing a charge of felony aggravated kidnapping. They are scheduled to appear in Richland County District Court on Feb. 28.

IT'S HERE...
34th Annual
Richland County
4-H Citrus Sale

Now Taking Orders For

- ✿ Rio Star Red Grapefruit
- ✿ California Navel Oranges
- ✿ Washington Red Delicious Apples
- ✿ Braeburn Apples ✿ D'Anjou Pears

PRICES:

- \$19 - 16 lb. Box of pears
- \$19 - 18 lb. Box of apples, oranges, pears
- \$19 - 18 lb. Box of grapefruit, oranges, Braeburn apples
- \$19 - 18 lb. Box of apples, oranges, grapefruit, pears
- \$26 - 30 lb. Box of grapefruit/oranges mix
- \$26 - 30 lb. Box of grapefruit, oranges, Braeburn apples
- \$26 - 30 lb. Box of apples, oranges, grapefruit, pears
- \$26 - 30 lb. Box of apples, oranges, pears
- \$15 - 20 lb. Box of grapefruit
- \$18 - 20 lb. Box of oranges
- \$21 - 40 lb. Box of grapefruit
- \$26 - 40 lb. Box of oranges
- \$15 - 9 lb. Box of 10 oranges, 6 apples*, 4 pears
- \$15 - 9 lb. Box of Braeburn Apples
- \$18 - Boxed Beef Sticks (40-50 Ct.)
- \$11 - Box of Cheese Sticks (24)

*half Red Delicious/half Braeburn

**Support your local 4-H program by
placing an order with a local 4-H member
or call 433-1206.**

Delivery March 29th
All Fruits Guaranteed!

COOKS ON MAIN
for the everyday chef

Soda Stream Fizz Machine!

Fizz Starter Kits start at \$149⁹⁹

Additional \$20 mail in rebate now available!

No High Fructose Corn Syrup!
No Aspartame!
Up to 2/3 less sugar
than store bought soda!

Cooks on Main does CO2 exchanges
and has over 20 flavors available!

Open Monday - Saturday
9:00 a.m. - 6:00 p.m.
224 Main Street • Williston ND
701-572-COOK (2665) • (F) 701-572-2666

Income Tax & Bookkeeping Services

- Oilfield Returns
- Complete Bookkeeping
- Business Returns
- Payroll Services
- Farm
- Bank Reconciliation
- Rental Property, etc.
- Quick Books Consulting

**QUALITY TAX PREPARATION
AND BOOKKEEPING** Fast, Accurate
& Affordable!

Take the
"Stink" out of
Income Taxes

29 Years
Experience

1416 2nd Ave. West
in the Sunset Mall
P.O. Box 595
Williston, ND 58801
Office: 701-572-0891
Fax: 701-572-2134



John Anderson

John Anderson Set To Replace Uncle Kracker At 2012 Richland County Fair & Rodeo

Uncle Kracker's upcoming performance at the Richland County Fair & Rodeo on Aug. 4, has been cancelled due to scheduling conflicts.

John Anderson has been contracted to replace Uncle Kracker, and to open for Joe Nichols.

It's been over a quarter century since John Anderson changed country music the first time. That was back in the '80s when that jaw-dropping country voice combined with huge hits like "Wild And Blue" and "Swingin'" to pave the way for the decade's neo-traditional movement. In the early '90s, he did it again with "Seminole Wind", a bona fide classic that reignited his career and helped fan the flames of the coming country explosion with hits like "Straight Tequila Night" and the album's unforgettable title track. Well, it's 2012 and Anderson's back to reestablish himself as a country music icon and as a contemporary musical force to be reckoned with.

For more information on John Anderson, visit: www.johnanderson.com.

For more information regarding the Richland County Fair, visit: <http://www.richlandcountyfairandrodeo.org>.

Dickinson State University Announces Fall 2011 Dean's List

A total of 326 students were recently named to the Dickinson State University Fall 2011 Dean's List.

In order to be selected to the Dean's List, a student must have achieved a minimum semester grade-point average of 3.5 (on a 4.0 scale) and have completed a minimum of 12 credits during the semester.

Local students named to the Dean's List include: Ashley Farr, Afton Garland, Janae Moore, Tiffany Pedersen, Kari Sergent and Brady Sundheim.

Check out RoundupWEB.COM

Good Luck at the Eastern C Divisionals Boys & Girls Basketball Tourney



F
A
I
R
V
I
E
W

Back (L-R) Riley Reynolds, Jonathan Shaide, Jace Taylor, Justin Bieber, Cody Vitt, Logan Kjos, Cody Shelmerdine, Kyle Shelmerdine. Front (L-R) Brock Schriver, Kristian Shaide, Tim Hurley, Duncan Sloan.

Merchants Bank
Formerly First Security Bank-West
New Name, Same Friendly People
FDIC
Box 465 • Fairview, MT
406-742-5203

INTERSTATE INDUSTRIAL
Steam Cleaning & Painting, Inc.
Marty Shaide
Fairview, MT
(406)-742-5634
(406)-489-1441

GOOD LUCK FAIRVIEW WARRIORS!
Call 742-5261 for Your Appointment Today!
MONDAK
FAMILY CLINIC & PHARMACY
An Outreach Service of SIDNEY HEALTH CENTER
Hours: 9am - 5pm • M, T, TH, F
304 S Ellery Ave • Fairview, MT

NEU CONSTRUCTION, INC.
Oil Field Roads & Locations
• Reclaim Work
• Gravel & Scoria Hauling
Fairview, MT
406-742-5549
neuconst@midrivers.com

HURLEY'S OILFIELD SERVICES
• Potable Water
• Sewer System • Loaders
• Communications
• Backhoe • Trucking
• Skid Houses • Porta Potties
406-742-5312
Fairview, MT

Valley CROP CARE
904 East Main, Sidney, MT
406-482-1303
800-949-1303



S
A
V
A
G
E

Back (L-R) Shad Stanford, Wyatt Hagler, Braden Ler, Zach Tunnell-Wilson, Chase Hagler. Front (L-R) Tanner Hagler, Trent Prevost, Chris Reynolds, Head Coach Bart Haflich. No pictured: Lawrence Hergenrider, Michael Reynolds, Austin Jensen, Ryder Rice, Braden Reisthamel.

POWDER KEG
EST. 1972
Family Dining
Open 4:30 pm Tue. -Fri.
2 p.m. Sat. & Sun.
Fairview • 406-742-5180

SUPER VALU
Fairview
406-742-5441

Mon-Kota, Inc.
Fertilizer & Irrigation Sales & Service
Fairview, MT
701-844-5300
Reinke
MORE RIGHT THAN RAIN
www.reinke.com

Culbertson Pharmacy
Open Mon - Sat 9-5
115 Broadway
Culbertson, MT
406-787-5313
Keith Brisben
Pharmacist

IIS SERVICES, INC.
Dan Cayko
(406)-480-5665
Marty Shaide
(406)-489-1441
406-742-3630 • Fairview, MT

FINNICUM'S
Hardware • Furniture
Appliances • Giftware
Culbertson, MT • 406-787-5213
The Other Place
Family Clothing & Dry Goods
Culbertson, MT
406-787-5211



C
U
L
B
E
R
T
S
O
N

Back Row L to R: Colton Zahn, Austin Oelkers, Nathan Hackley, Drew Larsen. Middle Row: Manager Landon Bidegaray, Michael Azure, Ben Bighorn, Shayne Cochran, James Jasper. Front Row: Kyle Nielsen, Maschil Boyd, Lane Sherman, Justin Larsen, Coach Cody Stepler. Not pictured: Assistant Coach Barry Bighorn.



31st Annual Quilt Show at MonDak Heritage Center Now Through March 3

The MonDak Heritage Center is pleased to announce the 31st Annual Quilt Show is now open through March 3. Come browse 45 entries and vote for your favorite for the Peoples' Choice Award. Prizes this year are \$50, \$30 and \$20 for first, second and third place. From this winter's latest project to antique heirlooms, the MonDak features quilts everyone will enjoy. This special event is made possible by the membership of the MonDak Heritage Center. Come vote for your favorites!

Upcoming IVN Session In Watford City For Parents, Becoming A Love & Logic Parent Series

By Marcia Hellandsaas
NDSU Extension Agent, McKenzie/Dunn Counties
Is being a parent draining your energy? Parents of tots to teens use these Love & Logic strategies to energize. Reduce the nagging and complaining from your children, promote thinking and responsibility, and give consequences with empathy. Put a laugh back into your parenting in this five-week IVN series!

Become a Love & Logic parent starting on Wednesday, March 7 and continuing on March 14, 21 and April 4 and 11 at the Courthouse Meeting Room, Watford City, from 6:30-8 p.m. CT.

Participants MUST register by calling the McKenzie County Extension Office at 701-444-3451 or emailing: marcia.hellandsaas@ndsu.edu. Pre-registrations are requested by March 2.

Program conducted by North Dakota Parent Education Network with funding from North Dakota Department of Human Services – Children and Family Services.

Wolf Point High School Thur. - Sat., Feb. 22-25



Back (L-R) Brittany Schneider, Jordan Gifford, Tiffany Kittleson, Amie Taylor. Middle (L-R) Trisha Hurley, Masyn Klose, Abbey Lebsock, Bailey Schriver, Faith Vitt. Front (L-R) Erin Cozzens, Mikaela McCall, Amanda Otterstetter, Alexis Gustafson.



Back (L-R) Manager Lindsey Reid, Hannah Boyd, Kate Reid, Allie Crowder, Bailly Nickoloff, Erica Nickoloff, Mercadeez Clark. Middle (L-R) Tori Kirkaldie, Samantha Fellman, Zandalie Martell, Rayneese Bets His Medicine, Mariah Machart, Caitlin Hofman. Front (L-R) Assistant Coach Erica Reid, Shelby Weeks, Renee Oelkers, ChelbiBrugh, Emily Nielsen, Coach Ashley Sullivan.



Back (L-R) Hanna Jepsen, Bridger Rice, Brittany Smith, Shanae Prevost. Front (L-R) Shelby Stanford, Brittany Conradsen, Desiree Martell.

Wednesday, Feb. 22

Boys: Fairview vs Hinsdale, 2:30 p.m.
Boys: Culbertson vs Lustre, 4 p.m.
Boys: Scobey vs Westby/Grenora, 5:30 p.m.
Saco/Whitewater vs Savage, 7 p.m.

Thursday, Feb. 23

Girls: Fairview vs Nashua, 12 p.m.
Girls: Circle vs Saco/Whitewater, 1:30 p.m.
Girls: Hinsdale vs Savage, 3 p.m.
Girls: Scobey vs Culbertson, 4:30 p.m.

FAIRVIEW

Kilen Backhoe Marvin Kilen & Sons

- Backhoe service
- Water systems
- Sewer & water service
- Trenching
- Pumps Sales & Service

406-798-3601

Fairview
489-1243 • 489-1426

THE OASIS COUNTRY HOUSE

3-1/2 miles north of Fairview
on Highway 58
701-744-5752

oasis@midrivers.com

Sidney Sugars
INCORPORATED
Sidney Montana

CULBERTSON

www.richlandfcu.com

Richland FEDERAL CREDIT UNION

Sidney & Roosevelt County
Office In Culbertson

**Bar & Casino
& Steakhouse**
10 a.m. - 2 a.m. Daily
Happy Hour
5-7 p.m. Monday - Friday
401 Ellery Avenue • Fairview
406-742-8110

416 S. Ellery, Fairview
406-742-5224

SAVAGE

Good Luck! From THE SAVAGE MINE

PO Box 30, Savage, MT
406-798-3651

QUINWELL ELECTRIC

Construction & Commercial Refrigeration & Electrical
Chuck Quinnell
406-776-2331
Lloyd Quinnell
406-776-2345

1-800-636-6680
www.nemont.net

MEAT PROCESSING 776-2447
Savage, Montana
NEW ADDITION
SLAUGHTERHOUSE

- custom meat processing
- curing & smoking
- sausage & jerky • wild game
- slaughter at the plant or your farm

VALLEY FUEL

For All Your Vehicle Service Needs!
Convenience Store
CONOCO
Highway 16 • Savage, MT
406-776-2354

406-776-2474

We Support the Warriors!

Valley Garage Inc.

299 Main Street
Savage, MT
406-776-2237

Bar JV Angus

Jim & Dale Vitt
Fairview, MT
406-798-3653

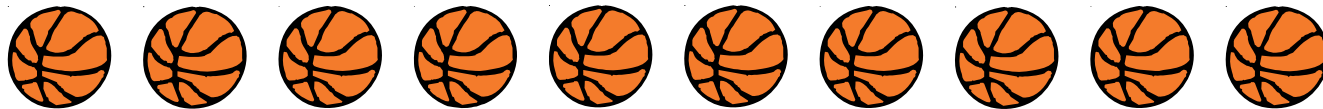
Pioneer...
The Quality Forage Source.

For more information contact:
HARLAN CONRADSEN
Savage, MT • 406-776-2400

GOOD LUCK SIDNEY EAGLES

Class A Divisionals • Glendive

Thurs.-Sat., Feb. 23-25



Sidney vs. Hardin • Thursday • 6 p.m.

Good Luck Eagles!

703 E. Main • Sidney
406-433-3410
Mon-Fri 9-5:30

Clay and Cheryl Moran

Gem City Motors

GMC AN AMERICAN REVOLUTION

BUICK
The New Class of World Class

703 S. Central • Sidney
406-433-3120
www.gemcitymotors.com

We're Proud to Support the Sidney Eagles!

BLUE ROCK PRODUCTS CO.
501 9th Ave NE • Sidney, MT
406-433-3403

Reese & Ray's IGA

203 2nd St. NW • Sidney
406-482-3737

M&M Cafe
Restaurant Special Events Catering

Schools-We can work within your budget. All buses & fans call ahead for later hours!

Open
Mon.-Sat. 5 a.m.-9 p.m.
Sunday 5 a.m.-8 p.m.
1721 S. Central Ave. • Sidney
406-433-1714

THE DEPOT
Casino POKER KENO

HAS PIZZAZZ

Hwy. 16 S • 406-433-4650
Sidney, MT

• WE DELIVER •

i'm lovin' it

Sidney, MT
406-433-1983

CHMS, P.C.
CERTIFIED PUBLIC ACCOUNTANTS

Audits, Estate Planning, Business Consulting, Estate Tax, Income Tax

P.O. Box 1067
104 Second Avenue SW
Sidney, MT
406-433-2092
FAX 406-433-2095



Back (L-R)
Lexi Prevost,
Whitney Leuenberger,
Cedar Lewis,
Madeline Warner,
Elise Torgerson.
Middle (L-R)
Abby Haraldson,
Krista Steinbeisser,
Ciara Sinks,
Lakayla Nentwig.
Front (L-R)
Kortney Mayer,
Colleen Crosby,
Hailey Steinbeisser.

Sidney vs. Miles City • Thursday • 8 p.m.

Frontier
Heating • Refrigeration
Air Conditioning
Sales/Service/Installation
Sidney, MT
406-488-4657

No One's a Stranger at the...

RANGER
LOUNGE & CASINO & EATERY

101 S Central • Sidney, MT
406-482-4566

Eagle Country Ford
Experience the Eagle Country Difference!

Mon-Fri. Hours: 8 - 5 p.m.
Sat. Hours: 9 - 1 p.m.

215 East. Main St. • Sidney
1(800)482-1810 • 433-1810



Top Row (Left to Right) Kevin Fike , Colin Moran , Brett Montgomery , Brad Anvik , Shane Monsen , Ryan Sullivan.
Middle Row (Left to Right) Mgr Molly Brodhead , Caleb Benson , Shay Steinbeisser , Justin Brown , Josh Torgerson , James Basta , Colton Moran , Mgr Kodi Satra. Bottom Row (Left to Right) Mgr Chelsea Strasheim , Cody Steinbeisser , Austin Papka , Alex Irigoien , Zach Hoffman , Marcus Mayer , Mgr Keziah Olson.

Footers
salads Subs & such

616 S. Central
Sidney, MT
406-433-7827

Open 10 a.m.
Daily

ARMSTRONG LAW OFFICE P.C.

Lee E. Armstrong
armslaw@midrivers.com
Licensed in Montana and North Dakota

406-433-7700
FAX 433-7720
212 S. Central

www.richlandfcu.com

Richland
FEDERAL CREDIT UNION

Sidney & Roosevelt County
Office In Culbertson

ACTION AUTO

Jeep
CHRYSLER Dodge Dodge Trucks

406-433-2312
1-800-788-2312
220 E Main
Sidney, MT

East-Mont Enterprises Inc.

- Candy
- Paper Goods
- Cleaning Supplies & More!

608 E. Main • Sidney
Wholesale Distributors
406-433-2910

Olson Plumbing & Heating

PO Box 375 • Sidney, MT
482-4027

Sidney Sugars
INCORPORATED
Sidney Montana



District 2 C Basketball Action

Culbertson Cowboys guard Justin Larsen goes up against Fusion's Jared Rosaaen. Culbertson won the game 59-33. The Cowboys advance to the Eastern C Divisional Tournament. For more pictures from the tournament go to www.roundupweb.com.

**This Week's Featured Home...
The Wyatt 1512 sq.ft.**

\$94,563

• Completely Set up • 3 Bedroom/2 Bath • Central Air
• Upgraded Appliances • Upgraded Flooring • Large Entertainment Center

Iseman Homes 2308 W. Front St. • Williston, ND 58801
Since 1920 **701-572-2590**

Our Happy Meals Just Got Healthier!

Now Includes Apples & Fries!

**20% fewer calories
15% less sodium
20% less saturated fat**

Starts **Thursday, Feb. 23**

i'm lovin' it Locally owned and operated Sidney • 433-1983

TRENTON INDIAN SERVICE AREA SPECIAL ELECTION 2012

The 2012 Special Election for Chairperson-At-Large to finish out term expiring in April 2013 will be held Wednesday March 7, 2012. The polls will open at 10:00 a.m. and close at 7:00 p.m. (local time).

POLLING PLACES:
 District I 2nd Floor Conference Room-Williams County Courthouse—Williston
 District II Trenton Indian Service Area—Trenton
 District III VFW Hall-Main Street-Bainville MT

CANDIDATES:
Tony Moran, Sr.
Henry "Chig" LaDue

ABSENTEE BALLOT REQUEST:
 Those voters unable or temporary absent for the General Election may request an Absentee Ballot in writing. The deadline date to request an Absentee ballot is February 24, 2012. This is being done to give "...the voter sufficient time to permit the voter to execute and return the absentee ballot through the US Postal Service on or before the date of the election." All absentee ballots will be counted after all other ballots have been counted after polls close. To Request an Absentee ballot, please write to:
 Cheryl Donovan
 P.O. Box 302
 Trenton, North Dakota 58853

CANDIDATE WATCHERS:
 Deadline for candidates to submit a list of watchers to the Election Board is February 24, 2012. This will ensure a fair and orderly election pursuant to the Election Code "...Each candidate shall be entitled to have a watcher at the polls and the tallying, but such watcher shall in no way interfere with the conduct of the election." The counting of ballots will be held in the TISA Boardroom after all polls close. The Election Board, Administrative Counsel, and Candidate Watchers will be present at counting. The public will be invited for the certification of the Election after the counting.

ELECTION BOARD MEMBERS:
 Chairman Cheryl Donovan
 District I Inspector LaRae Falcon
 District II Inspector Corrine Johnson
 District III Inspector Judy Erickson

Score Big with These Lunch Specials!

Test Drive One Of These 3 Great Vehicles & Have Lunch On Us!*

2008 F150 Crew Cab
81,815 miles, Arizona Beige
Only \$18,995
 Stk# 5769

2010 Ford Taurus SEL
20,417 miles
Only \$21,995
 Stk# 5715

2007 Chevy Suburban
101,300 miles
Only \$24,995
 Stk# 8313

Eagle Country Ford
 Experience the Eagle Country Difference!
 *Receive a voucher for a free lunch.
 215 E. Main • Sidney, MT
 406-433-1810
 800-482-1810



Good Luck Wolves!



District 15 Tourney

Fri., Sat., Mon., Feb. 24, 25, 27

New Town, ND

Friday, Watford City vs White Shield, 4 p.m.



Front row, L-R: Stat Tillie Alvshere, McKayla Haugeberg, Katie Mogen, Brianna Alex, Amanda Mogen, Fallon Fladeland, Stat Brittany Jevne. Back row, L-R: Head Coach John Zenz, Madison Brown, Tasha Bailey, Sadie Kieson, Charlie Hystad, Taylor Sparby, Asst. Coach Eric Krogen, Asst. Coach Nancy Deutsch.

CENEX Farmer's Union Oil Co.
HOT STUFF
101 South Main
Watford City, ND
701-444-3639

Twist Drive-In
Watford City, ND
701-842-3595

Farmers Union Insurance
"You're Never Alone"
Dennis Anderson
Representative
701-444-3273
229 N. Main
Watford City, ND

Enjoy *Coca-Cola* CLASSIC
Coca-Cola Bottling
Williston, ND
701-572-6746

For all your application & crop protection chemical needs!
TAYLOR Ag Service
Kent Taylor, Owner
Watford City, ND
701-444-3772
Licensed in ND & MT

1 One Stop
Hwy. 85 W.
Watford City, ND
701-444-3122
Lund Oil Co.
Watford City, ND
701-842-2805

RTC
Smarter. Better. Faster.
www.RTC.coop
VOICE • DATA • VIDEO

Pro
Auto Body
Corky & Marla Hayden
405 7th St. NE
Watford City, ND
701-842-2797

Agents with answers.
Eric Mogen
Watford City
444-6048
Nodak Mutual Insurance Company
www.nodakmutual.com

Front Porch Floral
Flowers
Balloons
Gift Baskets
336 N Main • Watford City
701-842-4664

McKenzie Electric COOPERATIVE
A "Exclusive Energy" Cooperative
908 4th Ave. NE
Watford City, ND
701-444-9288

S&S Motors
• Preowned Vehicles
• Full Service Shop
701-444-2341
WATFORD CITY, ND
www.sandsmotorsinc.com

FIRST INTERNATIONAL BANK & TRUST
MEMBER FDIC
Williston, ND 58801
701-774-8321
Watford City, ND 58854
701-842-2381

Watford City Veterinary Clinic
R.D. Nelson DVM
701-842-2037

Farmers Union INSURANCE
"You're Never Alone"
Dennis Anderson
Representative
701-444-3273
229 N. Main
Watford City, ND

Delmar Rink Construction
Keene, ND
701-675-2458

Northern States Fishing Tool Co., Inc.
Service & Rental Tools
Box 346
Watford City, ND
701-842-3350

Dakota West CREDIT UNION
329 N. Main • Watford City
701-444-6484
toll free 800-411-7590

Informational Meeting Scheduled To Discuss Culbertson Corridor Planning Study

The Montana Department of Transportation (MDT) is holding the first informational meeting on the Culbertson Corridor Planning Study on Wednesday, March 7, beginning at 6 p.m. The meeting will be held at the Town Hall, 210 Broadway, Culbertson. The purpose of the meeting is to inform the community on the corridor study scope and purpose, take questions, and solicit input from the community on the existing conditions and concerns within the corridor.

Community participation is a very important part in identifying issues and shaping future transportation planning, and public attendance is welcomed and encouraged. Comments may be submitted at the toll free comment line (1-800-714-7296), in writing at the meeting, or by mail to Carol Strizich, Project Manager, MDT Statewide and Urban Plan-

ning, 2960 Prospect Avenue, Helena, MT. 59620. Please indicate comments are for the Culbertson Corridor Planning Study.

MDT has initiated the process to develop the Culbertson Corridor Planning Study. The project study area encompasses a rectangular area around the town of Culbertson, which includes a 4-mile segment of U.S. 2 (between reference post 642.8 and reference post 646.8) and a 5-mile segment of MT 16 (between reference post 86.6 and reference post 88.6 north and between reference post 0 and reference post 3 south of Culbertson).

The corridor planning study will identify cost-effective ways to address transportation needs within the Study area. The Culbertson Corridor Planning Study is a pre-NEPA/

MEPA study that allows for earlier planning-level coordination with the public, environmental resource and other agencies and will inform any subsequent environmental review processes if any transportation projects are moved forward from the study. The corridor study is designed to determine what if anything can be done to improve the corridor and to facilitate a smooth and efficient transition from transportation planning to project development/environmental review. It is important to note that the Corridor Planning Study is developed strictly as a planning project and not a design project.

Future announcements will be made prior to all public events through the local media and the study mailing list. Interested parties are encouraged to join the project mailing list by submitting their name and contact information to Grey Turner, turnergrl@cdmsmith.com.

A study website has been developed and can be accessed at www.mdt.mt.gov/pubinvolve/culbertson/.

MDT attempts to provide accommodations for any known disability that may interfere with a person's participation in any service, program or activity of our department. If you require reasonable accommodations to participate in this meeting, please call Grey Turner, at 801-363-3955 at least two days before the meeting. For the hearing impaired, the TTY number is 406-444-7696 or 1-800-335-7592, or call Montana Relay at 711. Accommodation requests must be made at least 48 hours prior to the meeting. Alternative accessible formats of this information will be provided upon request.

New, Streamlined Elk & Deer Permit Application Packet Available Now—New Deadline Is March 15

Along with the new March 15 deadline to apply for 2012 deer and elk hunting permits, the new streamlined eight-page application packet—that contains all the information residents need to apply—is now available at all license providers, Montana Fish, Wildlife & Parks offices and online at fwp.mt.gov.

The new deadline was approved by the Montana FWP Commission in response to hunters' requests for more time to plan their fall deer and elk hunts, according to FWP spokesman Ron Aasheim, Helena.

"The new packets also offer a fast and convenient way to identify hunting districts where buck deer and bull elk permits are available," Aasheim said. "Hunters have consistently asked FWP to make things simpler and easier to understand, so we attempted to boil down all the permit application essentials into a brief packet. It's different, so we are urging hunters to go online or pick one up locally to get accustomed to the new format."

Aasheim said more than 80,000 applications have been printed and distributed statewide to FWP license providers. "We're also reaching out to more than 86,000 hunters who participate in the bonus point system with direct mail postcards to alert them of the new March 15 deadline and easy-to-use deer and elk application and information packet."

As in past years, Aasheim said a 2012 elk license is needed to apply for a special elk permit. But also new this year, to accommodate the new application deadline, elk licenses are now on sale for residents. In past years, elk licenses were not available for sale until mid-February.

"People are busy and they're seeking more convenient ways to participate so we're trying to be responsive to those needs," Aasheim explained. "Most Montana hunters are used to their hunting regulations arriving in April, but today they can pick up a new application packet and begin to plan now and then apply for their deer and elk permits by March 15."

Successful applicants will receive their permits in April and, as a result, have three extra months to make preparations for their fall hunts.

"Everything needed to apply is in the new application and information packet," Aasheim said.

Aasheim noted Montana's final deer and elk regulations—including those listed as pending in the deer and elk permit application packet—will be finalized by the FWP Commission on Feb. 16. The Commission's action on the pending hunting districts in the deer and elk application packet

will be available online Feb. 17. He said 2012 regulations will be posted online by March 15, and hard copy regulations will be on the shelf at FWP offices and local license providers by April 1. Hunters who'd like to review Montana 2011 regulations can do that online at fwp.mt.gov. Click the "For Hunters" tab.

Nonresidents who wish to apply for big game combination, elk combination or deer combination licenses and deer and elk permits for the 2012 fall Montana hunting season can also apply online or download an application from FWP's website. To request an application by mail, write to: Licensing Section; Montana FWP; PO Box 200701, Helena MT; 59620-0701; or call: 406-444-2950. The application deadline is March 15.

MFU Schedules Oil & Gas Leasing Workshops Feb. 27-28

The Montana Farmers Union will host two educational meetings about oil and gas leasing. The Feb. 28-29 meetings are designed to help landowners understand leasing options for natural resources and minerals associated with their property.

Meetings will be held in Glendive at the Moose Hall at 1 p.m. on Feb. 27 and in Billings at the Depot, Montana Avenue at 9 a.m. Feb. 28.

The workshops will give landowners the tools they need to learn about water, leasing and other natural resource considerations.

Presenters at the workshops will include representatives from the Dept. of Natural Resources and Conservation discussing water considerations, Montana Land and Minerals Owners Association, and also invited is a geologist and hydrologist.

Following the oil and gas meeting will be a lunch and producer crop update. Lunch is \$5 for members and \$10 for non-members. Please RSVP for an accurate lunch count.

Attendees are asked to register with the MFU office at 452-6406 or 800-234-4071 or via e-mail at mfu@montanafarmersunion.com. With increased interest in oil and gas exploration west of the Bakken and into Montana, now is the time to learn what you need to know before being approached or signing a lease of your mineral rights.

HOUSE & REAL ESTATE AUCTION

Owner: Debra Albin
310 4th Street SW, Sidney, MT

Open House

Sunday, Feb. 26, 2012
2-4 p.m.

Auction

Sat., March 17, 2012 3 p.m.

Roads will be marked w/auction signs.

PROPERTY LOCATION:

In Sidney, MT- Turn west on 4th Street SW (near the Middle School on Central Ave.) for 3 blocks, the house is on the south side of street

For more information: Rick Kniepkamp

406-485-2548 or 939-1632

www.r-kauction.com

Save Time & Money with Great Communication!

Mobile Radios

- 25 to 110 watts
- 8 to 128 channels
- small, easy to use

Starting at
\$359⁰⁰



Hand Helds

TK-2302

Hand Held
5 Watts w/ Scan



Nice selection of portables!

We can find a place to make it fit!


Call Larry today at...

ADVANCED COMMUNICATIONS


Just North of McDonald's • Sidney, MT
406-433-1659 or Toll Free 1-866-433-1659

22nd Annual Production Sale
SATURDAY, MARCH 3, 2012
1:00 P.M. MST • STOCKMEN'S WEST
DICKINSON, ND


Selling 45 High-performance, easy-fleshing bulls



K-C-F Bennett Total
BW WW YW SC Milk Marb REA Fat
-2 +45 +82 +56 +20 +28 06 +078



A.I. SIRES
KESSLERS FRONTMAN R001
KCF BENNETT TOTAL
CAR EFFICIENT 534
SITZ UPWARD 307R
MYTTY IN FOCUS



Kesslers Frontman R001
BW WW YW SC Milk Marb REA Fat
-1 +57 +96 -03 +24 +23 +51 +024

Tuhy
ANGUS RANCH

RICHARD & SANDRA TUHY
10449 15TH ST. SW • MANNING, ND 58642
(701) 573-4391 • (701) 290-0748
www.luckyvalley.com

Bulls fed free until April 1, 2012. • Raised without creep feed.
Average 205 weight of 739 lbs. • Many bulls are suitable for heifers.
First-year breeding season guarantee.

PREBUILT HOMES
BUILT IN SMALL TOWN USA & MOVED TO YOUR TOWN ASAP!

For more information contact:
Toby Romo at 406-769-2094

romocarpentry.com

HOMES BY **R** BAINVILLE, MT

NEU
CONSTRUCTION, INC.

Oil Field Roads & Locations
• Reclaim Work
• Gravel & Scoria Hauling

Fairview, MT
406-742-5549

LONG X BOTTLE SHOP

In-store specials every week. Check out our hard ice cream!

8 a.m.-9 p.m. Hwy. 85, Watford City
Mon.-Sat. 701-444-3335
1-5 p.m. Sun.
(Located in Long X Visitors Center)

TAYLOR
Ag Service

Kent Taylor, Owner
Watford City, ND
701-444-3772
Licensed in ND & MT

RTC
Smarter. Better. Faster.

www.RTC.coop
VOICE • DATA • VIDEO

HURLEY'S
OILFIELD SERVICES

• Potable Water • Sewer System
• Loaders • Communications
• Backhoe • Trucking
• Skid Houses • Porta Potties

406-742-5312
Fairview, MT

Sports Booster WEEKLY SCHEDULE

Basketball

Wednesday, Feb. 22

Fairview, Hinsdale, Culbertson, Lustre, Scobey, Westby/Grenora, Saco/WW, Savage at Eastern C Divisionals in Wolf Point: Fairview vs Hinsdale Boys, 2:30 p.m.; Culbertson vs Lustre Boys, 4 p.m.; Scobey vs Westby/Grenora Boys, 5:30 p.m.; Saco/WW vs Savage Boys, 7 p.m.

Thursday, Feb. 23

Fairview, Nashua, Circle, Saco/WW, Hinsdale, Savage, Scobey, Culbertson at Eastern C Divisionals in Wolf Point: Fairview vs Nashua Girls, 12 p.m.; Circle vs Saco/WW Girls, 1:30 p.m.; Hinsdale vs Savage Girls, 3 p.m.; Scobey vs Culbertson Girls, 4:30 p.m.

Winner of Fairview/Hinsdale game vs Winner of Culbertson/Lustre game, Boys 6 p.m. Winner of Scobey/Westby/Grenora game vs Winner of Saco/WW/Savage game, Boys 7:30 p.m.

Laurel, Hardin, Glendive, Billings Central, Sidney, Miles City at Eastern "A" Divisionals in Billings: Girls: Glendive vs Miles City, 2 p.m.; Boys: Hardin vs Glendive, 4 p.m.; Girls: Hardin vs Sidney, 6 p.m.; Sidney vs Miles City, 8 p.m.

Friday, Feb. 24

Laurel, Hardin, Glendive, Billings Central, Sidney, Miles City at Eastern "A" Divisionals in Billings: Billings Central vs winner of Girls: Glendive/Miles City game, 2 p.m.; Boys: Laurel vs winner of Hardin/Glendive game, 4 p.m.; Girls: Laurel vs winner of Hardin/Sidney game, 6 p.m.; Boys: Billings Central vs winner of Sidney/Miles City game, 8 p.m.

Fairview, Nashua, Circle, Saco/WW, Hinsdale, Savage, Scobey, Culbertson at Eastern C Divisionals in Wolf Point: Winner of Fairview/

Nashua game vs Winner of Circle/WW game, Girls at 3 p.m.; Winner of Hinsdale/Savage game vs Winner of Scobey/Culbertson game, Girls at 4:30 p.m. Eastern C Championship Game Boys, 7:30 p.m.

Saturday, Feb. 25

Laurel, Hardin, Glendive, Billings Central, Sidney, Miles City at Eastern "A" Divisionals in Billings: Eastern C Championship Game Girls, 7 p.m.

Friday, Feb. 24

Watford City District Girls Tourney in New Town, Watford City vs White Shield, 4 p.m.; Parshall vs Mandaree, 5:30 p.m.; Stanley vs Lewis & Clark-NS, 7 p.m.

Hockey

Friday, Feb. 24

Sidney Peewee vs Bismarck Senators at Bismarck, 6:30 p.m.
Sidney Jr Gold vs Watford City at Watford City, 7 p.m.
Watford City Bantam vs Bismarck Governors at Watford City, 6:30 p.m.
Watford City Jr Gold vs Sidney at Watford City, 8:30 p.m.

Saturday, Feb. 25

Sidney Girls 12U vs Williston at Williston, 12:15 p.m.
Sidney Peewee vs Bismarck Capitals at Bismarck, 11:45 p.m.
Sidney Bantam vs Bismarck Governors at Sidney, 10:30 a.m.
Watford City Bantam vs Bismarck Americans at Watford City, Noon

Sunday, Feb. 26

Sidney Girls U19 vs Crosby at Crosby, 1 p.m.
Sidney Peewee vs Bismarck Rangers at Bismarck, 11:45 a.m.
Sidney Bantams vs Bismarck Americans at Sidney, 10:30 a.m.
Sidney Jr Gold vs Crosby at Crosby, 4 p.m.

Support Your Favorite Team

M&M Cafe

All buses and fans call ahead for later hours!

1721 S. Central Ave. Sidney
406-433-1714

Wagon Wheel
Cafe & BBQ

Hours:
6 a.m. - 7 p.m.
Mon. - Sat.
6 a.m. - 2 p.m. Sun.

Fairview, MT
742-5200

Be Sure To Thank
The Sports Booster
Schedule Sponsors
On This Page

Family Dining

POWDER
KEG

Fairview
406-742-5180

Open at 4:30 p.m. Tues.-Fri.
2 p.m. Sat. & Sun.

HOT STUFF
PIZZA

FOOD
ON THE GO

Farmers Union
Oil Co.

201 S Main • Watford City
701-444-3639

We Support
All The
Area Teams!

Member FDIC

Main St. • Alexander • 701-828-3338
100 N Main • Watford City • 701-842-2381

Harold Hamm, Continental Resources CEO, To Headline Montana Ambassador Annual Meeting

Governor Brian Schweitzer has announced that Harold Hamm, Continental Resources, the largest independent oil producer in the Bakken region, will keynote the Montana Ambassadors annual meeting and conference. The conference theme is "Imagine the Possible" and will be held at the Billings Crowne Plaza March 22-23.

Hamm, Continental Resources chairman and CEO, founded the predecessor company in 1967 as an oilfield service provider, later expanding to focus on the exploration and production of crude oil and natural gas properties in Oklahoma. In 1993, Continental Resources expanded into the Rocky Mountain region, first into the Red River Units of Montana and the Dakotas, and then into the Bakken Shale play in Montana and North Dakota. The company is now the third largest crude oil producer in the Rocky Mountain region, the largest leaseholder and driller in the Bakken Shale and the largest leaseholder in the Anadarko Woodford in Oklahoma, with additional operations in the South and East regions of the United States.

"The Montana Ambassadors play an important role in sharing our success stories, such as our top business climate and high quality of life, to attract new businesses and create jobs. We are also excited to have Harold Hamm, a leader in the energy industry, speak at the annual meeting," Governor Schweitzer said.

A special energy panel will highlight the second day of the conference and include leaders in wind power development, coal development, merchant electrical transmission line development, and oil pipeline development.

The Governor will also present five major Montana Ambassador Awards for their outstanding service to the state of Montana. The following recipients will be recognized:

The Montana Ambassador of the Year is Leslie Messer, Richland County Economic Development executive director. Messer serves on the Ambassadors Board of Directors and exemplifies what it means to be a Montana Ambassador through her service to the organization and the state of Montana. She works every day with businesses involved in the Bakken development and growth of eastern Montana.

The Montana Ambassador Entrepreneur of the Year is Sarah Calhoun, Red Ants Pants, White Sulphur Springs. Calhoun's clothing manufacturing and sales business operates in a way that protects Montana's quality of life. She has demonstrated leadership, innova-

tion, entrepreneurial spirit and commitment to the economic development in the state. Calhoun was among entrepreneurs at a recent meeting at the White House as part of the Business Leaders' Forum on Jobs and Economic Competitiveness.

The Montana Ambassadors Business of the Year is Stillwater Mining Company. Stillwater Mining Company currently employs over 1,500 workers and has demonstrated extraordinary innovation in the highly competitive mining industry. Frank McAllister, Stillwater Mining chairman and CEO, is expected to accept the award. The company recently added 81 new jobs and announced plans to spend \$68 million on the expansion of its mines.

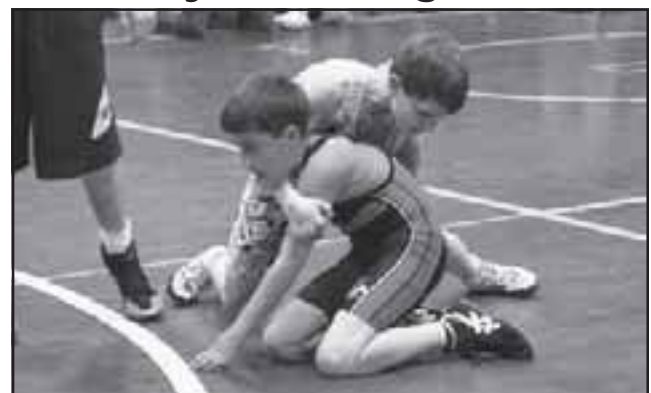
Montana Ambassadors Mike Malone Educator of the Year is Dr. Waded Cruzado, Montana State University. Dr. Cruzado has demonstrated outstanding accomplishment, excellence and leadership in the field of education in her brief time as MSU president. Under her leadership, MSU has won more than \$215 million in research grants in the past two years, earning MSU the Carnegie "very high research activity"

classification. Cruzado secured the largest university system donation ever from Montana native Jake Jobs, \$25 million, to construct a new state-of-the-art Business School at MSU.

Outreach Montana Ambassador of the Year is awarded to Lynda Colucci, Global Indemnity/Diamond State Group, Pasadena, CA. Colucci, a native Montanan, hosted a very successful outreach event in the San Francisco Bay Area that resulted in at least one business expanding to Montana. She continues to build interest in business expansion to Montana and is in the process of establishing a Southern California Chapter for Montana Ambassadors.

For more information on these awards and the Annual Meeting and Conference, visit <http://www.montanaambassadors.com>. The Montana Ambassadors is a volunteer, not-for-profit organization of leaders in business, education, economic development and local and state government with a common dedication of supporting the Governor's economic development agenda and improving the economy of Montana.

Sidney Wrestling Action



Jett Jones, Sidney, turns his opponent at the Chateau Duals Wrestling Tournament Saturday. (Photo by Kari Jones)



Xander Dean, Sidney, works to turn his opponent at the Red/Blue Wrestling Tournament for the younger wrestlers Friday night in Chateau. (Photo by Kari Jones)



Brady Gorder looks for the pin at the Butte Cyclops tournament. Gorder placed 4th at the tournament. (Photo by Kari Jones)

The Roundup Classifieds

Reach Over 21,000 Readers Each Week
In Eastern Montana & Western North Dakota
And Always On The Internet at
roundupweb.com

(Paypal required for online purchases)

\$7 up to 30 Words

Classy Deadline: Noon Monday

Add a photo
to your classy
online!

HELP WANTED

ADMINISTRATIVE ASSISTANT/RECEPTIONIST

The Roundup has an immediate opening for a full time administrative assistant/receptionist Mon.-Fri. Experience w/PageMaker, Microsoft Word & Excel programs a +. Will be answering phones, waiting on customers, some bookkeeping work & entering classified ads. Friendly family working environment. Wages depend on experience & education. If interested, apply at the Sidney Job Service & take necessary basic tests.

POSITIONS AVAILABLE

Richland Opportunities, Inc. has 1 full time & 6 part time positions available for direct care staff to serve adults with developmental disabilities in group home setting with evening & weekend hours. FT position is Thurs.-Mon.

overnights starting at 10 p.m. through shift end with starting wage of \$10.10, includes full benefits w/paid insurance. Part time wage is \$9.35 w/ partial benefits. 6 mo. wage increase. Apply at ROI 1100 Silurian Lane or call Tami at 406-488-3341. Closes upon filling position.

LOAN OFFICER

Daniels-Sheridan Federal Credit Union is looking for a loan officer for our Medicine Lake office. Knowledge of financial management, budgeting, computer skills, strong organization & communication skills. Wages & benefit package will be based on qualification & experience. Position open until filled. Interested & qualified applicants can send resume to: Daniels-Sheridan Federal Credit Union, attn: Patricia Zuck, President/CEO, PO Box 1160, Scobey, MT 59263-1160.

JANITOR WANTED!!

Looking for full or part-time help. Duties include sweeping, mopping, dusting, vacuuming, deep cleaning & other duties as requested. Wages are negotiable. Apply at Sidney Cleaners & Laundry, 121 2nd Ave NE, Sidney, 406-433-1405.

COOKS/BARTENDERS

Full & part time cooks & bartenders, Hi-Way Lounge, Alexander, 701-828-3100.

BUILDING CENTER HELP

In store help wanted. McKenzie Building Center, Watford City. 701-444-3665.

CARRIERS WANTED

Need extra cash or want to get some exercise? We have carrier routes available in most parts of Sidney. New motor route just opened. Call Linda to apply or fill out application at The Roundup.

LAUNDRY WORKER

Sidney Cleaners is looking for a full time presser/laundry worker. Mon.-Fri. 8 a.m.-5 p.m. Apply at Sidney Cleaners, 121 2nd Ave NE or call 406-433-1405.

WAITRESSES/WAITERS

PT waitresses or waiters wanted at Betania Ristorante Italiano. Weekend openings, 4-10 p.m. Fill out application at the restaurant.

MECHANIC WANTED

Mechanic with tractor/tank trailer experience. Welding/fabrication Experience a +. Excellent pay, benefits & health insurance! Call Russ Wolfgram, Rugged West: 701-842-4977.

REAL ESTATE

EVERS CREEK
Low down payment will buy 1.5 acre wooded, level building site west of Whitefish, MT. \$1000 down, \$452/mo., 7%, 30 yrs. on

sales price of \$69,000. No closing costs. 877-707-7544 or 406-293-6333.

SNOW CREEK

Remote 10 acres SW of Bonners Ferry, ID. Bordered by National Forest. Secluded w/ great views & good access. No down, \$325/mo., 7%, 30 years on sales price of \$48,500. No closing costs. 877-707-7544 or 406-293-6333.

OLDER HOME

Keene, older home complete inside remodel in 2008. Approx. 1200 sq. ft. + 465 sq. ft. basement, sits on 1/2 acre lot, no building ordinances. 701-842-2778 or 701-570-3527 ask for Paul.

FOR RENT

COMPANIES
Need a place to conduct your business? We can accommodate your needs. Great

Sidney location near Hwy. 16. 406-488-4338 for more info.

WANTED: ROOM TO RENT

Wanting a room to rent, willing to be nanny, housekeeper, elderly care, just need a room to sleep in either Sidney or Richland County. 406-489-2755.

SERVICES

CARPENTRY SERVICES
Carpenter, Remodels, New Construction. Free Estimates.

Patrick W. Baxter, Fairview. 406-489-2836

HOT SHOT TRUCKING

Haul Lass, LLC is now servicing the area. Delivering anywhere, anytime! Reliable, responsible & local! Give me a call at 406-480-0126 or 406-488-6613, email hoffhd@hotmail.com or fax 406-488-6107. Dianna Hoff, Hauler.

ADMINISTRATION ASSISTANT/RECEPTIONIST HELP WANTED

The Roundup has an immediate opening for a full time administration assistant/receptionist Monday-Friday. Experience with Pagemaker, Microsoft Word & Excel programs a plus. Will be answering phone, waiting on customers, some book keeping work and entering classified ads. Friendly family working environment. Wages depend on experience and education. If interested, apply at the Sidney Job Service and take necessary basic tests.

S&S Motors

See the CLEARANCE tag specials!

- 2011 Chevy Suburban LTZ, white, DVD, 12k mi. **\$51,995**
- 2009 GMC Yukon Denali XL, red, DVD, 30k mi. **\$46,995**
- 2009 GMC Yukon Denali XL, white, DVD, 47k mi. **\$43,995**
- 2011 GMC Yukon XL, black, DVD, 18k mi. **\$41,995**
- 2010 Ford F150 Platinum, red, sunroof, 25k mi. **\$39,995**
- 2011 Chevy Traverse LTZ, black, DVD, 24k mi. **\$38,995**
- 2010 Ford F150 Lariat, black, Nav., 24k mi. **\$36,995**
- 2008 Chevy Tahoe LTZ, maroon, DVD, sunroof, 44k mi. **\$36,995**
- 2009 Chevy Suburban LTZ, gray, DVD, 57k mi. **\$36,995**
- 2009 Ford F150 Platinum, silver, 36k mi. **\$35,995**
- 2011 Dodge Ram, Laramie, red, Nav., sunroof, 18k mi. **\$33,995**
- 2011 GMC Acadia, red, htd. leather, 26k mi. **\$33,995***
- 2011 Ford Edge Ltd., black, htd. leather, 22k mi. **\$31,995***
- 2009 Ford F150 Lariat, maroon, 45k mi. **\$31,995**
- 2009 Dodge Ram 3500, diesel, long box, 55k mi. **\$31,995***
- 2010 Ford F150, Fx4, blue, 47k m. **\$29,995**
- 2009 Ford F250 XLT, white, 42k mi. **\$29,995**
- 2010 Ford Edge Ltd., gray, htd. leather, 35k mi. **\$27,995***
- 2008 Buick Enclave CXL, blue, DVD, 48k mi. **\$27,995***
- 2009 Chevy Silverado 1500, gray, 35k mi. **\$27,995***
- 2010 Ford F150 XLT, gray, 43k mi. **\$27,995**
- 2011 Ford Edge SEL, blue, 33k mi. **\$26,995***
- 2007 Chevy Tahoe, silver, 97k mi. **\$22,995**
- 2011 Ford Escape XLT, gray, 38k mi. **\$21,995**
- 2007 Chevy Silverado 1500, white, ext. cab, 67k mi. **\$17,995**
- 2002 Chevy 2500 HD, gray, diesel, 165k mi. **\$14,995**
- 2008 Pontiac Grand Prix, white, 51k mi. **\$11,995**
- 2006 Cadillac DTS, silver, htd. leather, 81k mi. **\$13,995***
- 2006 Ford Mustang, convertible, blue, leather, 76k mi. **\$10,995**
- 2005 Buick LeSabre, light blue, 95k mi. **\$8,995**
- 2001 Dodge Ram 1500, maroon, 103k mi. **\$7,995**
- 2005 Dodge Grand Caravan, blue, DVD **\$7,995***
- 2002 Buick Park Avenue, silver, 99k mi. **\$7,995**
- 2004 Ford Crown Victoria, green, leather, 83k mi. **\$6,995**
- 2002 Pontiac Bonneville SE, tan, 165k mi. **\$4,995**
- 1995 Ford F150 XLT, brown, 109k mi. **\$3,995**

www.sandsmotorsinc.com

444-2341 or Toll Free - 800-584-9205 • Watford City, ND

Your local Bible Book Store. If we don't have it, we'll order it for you.
119 So. Central Sidney, MT
406-433-3355
www.carpentersstorehaus.com
www.gloriasdiscovery.com

Stockman Bank
Montana Banking. Pure & Simple. We are a Montana-born company, built on Montana values, focused on creating long-standing relationships through integrity, expertise and results. Join us in our Sidney office as a: **Full Time Receptionist** To view job opportunities, visit us and apply on-line at **www.stockmanbank.com** EOE

House For Sale
House • Shed • Pole Barn on 4 acres
Extra Acres Also Available

5+ Bedrooms, 2 1/4 Baths
3,600 sq.ft. 3 level home, 1,200 sq.ft. per floor
20x20 Sunroom • Front Porch • Balcony
48x88 Shed with 14x14 & 14x24 overhead doors
24x40 3 stall pole barn with doors
Fenced pasture & back yard • beautiful landscape
Asking \$550,000
406-742-5160 or 406-489-4608

Expanding Business
Looking for a
Nail Tech
Call An English Touch
406-433-1430 • Sidney, MT

Mini-Storage

STORAGE UNITS AVAILABLE
20X20 • 10X20
10X16 • 8X9
Sidney, MT
482-3799 or 482-2666

The Roundup

Reaching over 8,400 Households in Western North Dakota and Eastern Montana Every Week
Classified Ad Order Form (Please Print)

1	2	3	4	5
6	7	8	9	10
11	12	13	14	15
16	17	18	19	20
21	22	23	24	25
26	27	28	29	30 \$7.00
31 \$7.10	32 \$7.20	33 \$7.30	34 \$7.40	35 \$7.50 (etc.)

\$7.00 for 30 words or less; additional words 10¢ each

Number of words _____ x Number of Times _____ = Cost \$ _____

Name _____ **Payment Must Accompany Ad**

Mail To:
The Roundup

P.O. Box 1207, Sidney, MT 59270

WELDING

Welding & repair work. No job is too small. Portable welder, reasonable rates. 701-444-2936.

COMPLETE SERVICE CENTER

The Roundup provides free faxservice at Meuchel Compter Services, Watford City, for all news, photos & advertising copy. **You may drop your Roundup payments at Meuchels.**

FARM & RANCH

DITCHWITCH

3' Ditch Witch chain auger vibrating plow, 4x4 diesel. Heavy duty tilt trailer, 9 ton. 406-270-3194.

CALVING SUPPLIES

Cattlemen: Calving supplies, calf startena, HH calving pen, panels, HD round bale feeders, Purina Mineral tubs with Availa 4. Williston Saddlery, Hwy 2 W. 701-572-2267.

BEXTRA ROUND BALE FEEDERS

Selling hay saving Bextra bale feeders. Steel framed calf shelters & steel framed windbreaks. Wooden 16' feed troughs. 3-pt trailer hitches & pallet forks to fit loader buckets. Kueffler Ranch Supply, 701-694-3620.

VERMEER HAYING EQUIPMENT

See us today for all your haying & feeding equipment, sweeps & Farm Oil. Anderson Vermeer Sales & Service. Open Mon.-Fri., 8 a.m.-5:30 p.m. 701-828-3358 or 701-

828-3482 after hrs., Alexander.

MISCELLANEOUS FOR SALE

QUICK CEMENT

25 bags of Quick Cement \$4.50/bag. 15 - 8' PCV posts \$10/ea. Misc. pots & pans. 701-828-3044.

GLENDIVE GUN SHOW

Glendive Gun Show, E.P.E.C. Bldg., 313 S. Merrill, Glendive. March 2,3 & 4. Show hrs: Fri. 4-9 p.m.; Sat. 9 a.m.-6 p.m.; Sun. 9 a.m.-3 p.m. Questions or reservations call Ernie 406-377-3969.

VEHICLES FOR SALE

CAR/PICKUP/CAMPER
'85 Buick LeSabre, \$1,000.
'88 Chevy 3/4T, 2X4, \$750.
Older camper trailer, \$1,000.
Cream cans, \$20/ea. Lots for rent, water & sewer paid, \$400. Leave message if no answer. 406-774-3453.

FOR SALE

'07 Honda CRF70 dirt bike, exc. cond., \$1,000. OBO. 406-478-0072.

FOR SALE

'06 Ford F-150 Lariat, crew cab, smoke stone, htd. leather, remote start, new tires, box cover, 91k mi., \$19,000. 701-675-2195 or 701-578-4510.

FOR SALE

'03 Dodge Grand Caravan Sport, 128k mi., good cond., original owner, \$4,900. 406-742-5446.



Beautiful, Completely Upgraded Private Chalet For Sale

Located 10 miles east of Miles City, MT, in the Pine Hills Ranchettes. 2,200 sq. ft. of redwood wrap-around deck to enjoy the breathtaking canyon view.

See more pictures at www.realestatemilescity.com or Call Integrity Realty at 406-234-8100

Need Loader Work Done?
Loading Gravel & Scoria • Snow Removal
Cleaning Corrals & Much More!

JD 644EZ
4 Yard Bucket
Quick Detach Grapple

Call 406-489-1711 for estimates!

Are you an exceptional individual who is ready for success and the opportunity to grow your career in hospitality?

Then we want to get to know you!

The ALL NEW Microtel Inn & Suites is in search of new and future hospitality professionals who are prepared to provide industry-leading levels of customer service and award-winning overall guest experiences.

No experience? NO PROBLEM! We will train and equip you with the skills and tools you need to succeed.

- Access to top-tier operational support
- Exciting career advancement opportunities
- Competitive wages and benefits.

So if you're the type of person who thrives on providing a peerless level of service and an unforgettable customer experience, apply today!

You can check out our other hotels at www.microtel.com and www.oasismgmt.com, and also email info@microtelsidney.com to submit your resume or request an application. Resumes and applications can also be faxed to 303.325.1010.

Entry-level and supervisory positions are available in...

- ...Front Desk
- ...Housekeeping
- ...Property Maintenance

ROUNDUP TRADER

PLACE YOUR PHOTO HERE!!

Only \$15/wk
Email: classads@esidney.com

2004 Yukon XL
137k mi., 4 wheel drive, leather interior, DVD, remote start, good tires, maroon.
\$9,900
Call 406-489-2612

OVEN FOR SALE
Hobart commercial double deck convection oven, double deep fryer, 6' commercial hood, exhaust & 5 suppressant system. Call Russ at 406-489-7431.

TRUCKS
Off lease pickups, utility trucks, SUV's. Wholesale.
www.glendivesales.com
800-726-6763

Is your Farm & Ranch business Roundup Ready

See Us Today We make good business better!

Roundup
406-433-3306
email@esidney.com

E&N Odd Job Service
We do all kinds of odd jobs. Give us a call!
Thank You!
406-478-1007

<p>SY Soren New! AgriPro's Highest Return Per Acre</p> <p>Kelby High Protein and Complete Agronomics</p> <p>Jenna The Yielder with Protein</p> <p>Reeder Good Yields and Protein Under Wide Ranging Conditions</p>	<p>SY Tyra New! AgriPro's Slightly Tolerant Variety</p> <p>Brennan Balanced With High Yield and Protein</p> <p>SY605 CL High Yield CLEARFIELD® Spring Wheat</p> <p>Trapeze Yellow Pea</p>
--	---

Call For Varieties Not Listed

SKOV SEED New High Yielding Variety with Good Height and Standability

Randy Skov | Fairview, MT
406-747-5217 Home | 406-489-0165 Cell

Call Today!

CHAMPION
IAC Modular & HUD Standards

SchMart SOLUTIONS, LLC
Sidney, MT 59270
Debra Schaeffer Owner
406-488-6183 • 406-489-6183

Very Affordable
Customize Your Modular Home, Single or Double Wide

schmartsolutions@gmail.com

Land For Sale

Selling by sealed bids, **2-20+ acre lots.**
7 Miles SE of Sidney on Highway 23, on a bus route.
Call 406-488-1097 evenings for info or to view.

Send Bids To:
Keith & Bonnie Osborne
12214 CR 353A • Sidney, MT 59270

Owners reserve the right to accept or reject any or all bids.
Bid closing March 15, 2012

SIDNEY HEALTH CENTER
Exceptional Care for Life

Sidney Health Center is accepting applications for the following positions:

- Perioperative Service Environmental Serv. Tech/Aide
- RN Home Health/Hospice
- Director Operating Room
- PT Resident Assistant Lodge
- Environmental Services
- Surgical Technologist

For additional information or to apply online, please visit our website at: www.sidneyhealth.org

- or contact -

Marilyn Olson
216 14th Ave SW • Sidney, MT 59270
Phone: (406) 488-2571
mjolson@sidneyhealth.org

Montana - Wyoming West RANCH BROKERAGE

Clifton M Berglee, DVM
(406) 628-2341 • (406) 860-7319/c

Cannonball River Ranch
1,248 deeded acres, 1 mile Cannonball River, 5,800 SF hand-peeled log home/lodge, separate care-takers residence, hip roof barn, excellent variety of game birds & deer, a great place for family & friends. 5 miles west of Lake Oahe. 45 miles south of Bismarck, ND.

Bar JN Angus Ranch
4,040 acres, 180 ac irrigated, 2 pivots, 1,200 ton hay inventory, steel corrals, certified scale, nice 5 bedroom home, Interstate 94 frontage, Yellowstone River valley, Hysham, MT

Bell-Potts Ranch
9,371 deeded acres, 312 acres BLM, 300 cows, 5-6 mi Little Porcupine Cr, 200 ac flood irrigated, 21 dams, 4-6 wire fences, cheap operating, heavy weaning weights, Forsyth, MT

Crow Creek Ranch
17,400 acres, 3000 ton hay, 650-900 cows depending on hayland use, 7 miles Powder River, 4 miles Crow Creek, 37 inch mule deer & 25 inch whitetail bucks taken, new home, heated shop. school bus, \$5.8M cash.

Reservoir Ranch
275 cows, 3 pivots, 10 side rolls, 2,000 ton hay inventory, ranch improvements, fronts HWY 91 and Interstate 15, 8 mi N of Dillon, MT

Phillipsburg Valley Ranch
550-600 cows, 7 pivots, 200 hd FS permit, 1,600 ton hay inventory, ranch improvements, 2 mi Trout Cr, elk, moose, sheep & goats, 10 minutes to Georgetown Lake (summer water skiing or winter snow skiing at Discovery Basin), Phillipsburg, MT

--Public Notice--

Nortana Grain Co. in Lambert MT. is seeking bids for the demolition and removal of the Nortana grain elevator, annex, scale room, attached feed shed and offices located in Lambert beginning in 2012. All services in the current facility will be discontinued in 2012. Please contact the general manager, Tondel Beery at 406-774-3331 or cell 480-3535 for details. No services plan to be interrupted. All services will continue but moved to the new office/shop building in January of 2012. Parallel to the demolition, a new state of the art portable seed cleaner, modern grain handling equipment, and a feed shed will replace the facility.

nortana GRAIN CO.
406-774-3331
406-433-3014

LAMBERT-SIDNEY

Roundup
WEB.COM

Lunch Menus

Richey Schools
Wed., Feb. 22: Super salad bar.
Thurs., Feb. 23: Beef Stroganoff w/noodles, pears, bread.
Fri., Feb. 24: Pizza & salad bar.
Mon., Feb. 27: Wiener wraps, chips, mixed veggies.
Tues., Feb. 28: Meatloaf, mashed potatoes, green beans, bread.

Sidney Schools
Wed., Feb. 22: Fish nuggets, macaroni & cheese, potato smiles, apple, milk.
Mon., Feb. 27: Hamburger gravy, mashed potatoes, green beans, pull-aparts, applesauce, milk.
Tues., Feb. 28: Chicken noodle soup, PB & J sandwiches, crackers, pears, pudding, milk.

Rau School
Wed., Feb. 22: Pizza, salad, fruit, brownies, milk.
Mon., Feb. 27: Ham & potato hot dish, carrots, mixed fruit, rolls, milk.
Tues., Feb. 28: Beef patty, potatoes & gravy, green beans, mandarin oranges, milk.

E. Fairview School
Wed., Feb. 22: Chili, cinnamon roll, apples, carrots.
Mon., Feb. 27: Hot dog, potato wedges, lettuce salad, apples.
Tues., Feb. 28: Chicken tortilla lasagna, rice, green beans, oranges, garlic bread.

Fairview School
Wed., Feb. 22: Chef salad w/cheese & egg, fruit, pudding, pretzel.
Thurs., Feb. 23: NO SCHOOL
Fri., Feb. 24: NO SCHOOL
Mon., Feb. 27: Soup & sandwich, raw veggies, fruit.
Tues., Feb. 28: Pulled pork sandwich, potato, green beans, fruit.

Culbertson School
Wed., Feb. 22: Meatloaf, baby bakers, fruit, jello.
Thurs., Feb. 23: Egg roll, rice, stir fry veggies, banana, fortune cookie.
Fri., Feb. 24: Chicken tenders, fries, apple, cookie.
Mon., Feb. 27: Tater tot casserole, peaches, chocolate chip bar.
Tues., Feb. 28: Chicken burger, fries, mandarin oranges.

Bainville School
Wed., Feb. 22: Cheese tortellini, marinara sauce, broccoli, garlic bread
Thurs., Feb. 23: Chicken fajitas, peaches, PB&J sandwiches.
Fri., Feb. 24: Spaghetti w/meat sauce, corn, bubble bread.
Mon., Feb. 27: Corn dogs, potatoes, veggie, fruit.
Tues., Feb. 28: Shepherd's pie, beans, bread sticks.

Lambert School
Wed., Feb. 22: Hobo stew, cheese, crackers, buns, cinnamon buns, milk.
Thurs., Feb. 23: Chicken, mashed potatoes, gravy, green beans, fruit cocktail, buns, milk.
Fri., Feb. 24: NO SCHOOL.
Mon., Feb. 27: Chicken ala King, salad, pineapple upside down cake, milk.
Tues., Feb. 28: Hot ham & cheese, chips, fruit salad, milk.

Froid School
Wed., Feb. 22: Hamburger stroganoff over noodles, relishes, coleslaw, cherry crisp, buns, milk.
Thurs., Feb. 23: Baked cod, potato wedges, buttered corn, mandarin oranges, buns, milk.
Fri., Feb. 24: Super gems, apple wedges, milk.
Mon., Feb. 27: Milk rice, assorted sandwiches, relishes, fruit bar, milk.
Tues., Feb. 28: Pizza-combo or pepperoni, lettuce salad, bananas, milk.

Savage School
Wed., Feb. 22: Polish dogs/sauerkraut, mashed potatoes, peas, mandarin oranges, bread.
Thurs., Feb. 23: Hamburger/bun, French fries, pears.
Fri., Feb. 24: Burrito, tossed salad, fruit cocktail.
Mon., Feb. 27: Mini corn dogs, smiley faces, peaches, fresh vegetables.
Tues., Feb. 28: Scalloped potatoes & ham, corn, pears, bread.

PRESIDENTS' DAY SALE 0%

PLUS \$2,000 FINANCING ON 2011 SILVERADOS AND SIERRAS

** Must finance with Ally. Includes trade-in allowance and loyalty. Must own a 1999 or newer GM vehicle.

2011 SILVERADO 3500 2WD CHASSIS/CAB
MSRP \$37,070
***MURPHY'S PRICE \$30,036**



2011 SILVERADO 2500 4WD LTZ CREW DURAMAX
MSRP \$56,330
***MURPHY'S PRICE \$49,988**



2011 IMPALA LS SEDAN
MSRP \$25,810
***MURPHY'S PRICE \$20,513**



2011 MALIBU 2LT
MSRP \$28,675
***MURPHY'S PRICE \$22,867**



2011 SILVERADO 3500 4WD EXT CAB LT
MSRP \$41,122
***MURPHY'S PRICE \$33,790**



2011 SIERRA 2500 HD CREW CAB 4WD
MSRP \$44,810
***MURPHY'S PRICE \$37,246**



2011 SILVERADO 2500 4WD EXT CAB LT
MSRP \$41,760
***MURPHY'S PRICE \$34,418**



2011 SILVERADO 4WD CREW CAB
MSRP \$41,470
***MURPHY'S PRICE \$32,763**



2011 ACADIA AWD SLT 2
MSRP \$47,885
***MURPHY'S PRICE \$42,844**



2011 SILVERADO 2500 CREW CAB
MSRP \$44,059
***MURPHY'S PRICE \$36,775**



2011 SILVERADO 3500 SRW 4WD REG CAB
MSRP \$37,180
***MURPHY'S PRICE \$30,086**



2011 TRAVERSE AWD 2LT
MSRP \$39,970
***MURPHY'S PRICE \$35,724**



2011 SILVERADO 2500 4WD CREW CAB
MSRP \$44,470
***MURPHY'S PRICE \$36,706**



2011 TAHOE 4WD LT
MSRP \$50,055
***MURPHY'S PRICE \$42,938**



* Includes all applicable discounts and rebates. Includes trade allowance rebate. Trade must be 1999 or newer, includes owner loyalty. Must own 1999 or newer GM vehicle. Need not trade it in.



SEE THESE SALES CONSULTANTS FOR QUALITY CAR BUYS!



1801 2nd Ave. W. Williston, ND
Call 1-800-888-2927 or 701-577-2927
Hours: Mon. 8am-8pm ; Tues.-Fri. 8am-6pm; Sat. 9am-5pm

www.murphymotors.com



Watford City's 145# Trevor Kalberer placed 7th at the North Dakota State Wrestling Tournament in Fargo. Kalberer (shown above) won by decision over Riley Lura (Carrington) 6-0. Watford City placed 27th at the tournament. (Photo by Frank Fish)



Cortnee Fischer and Brian Cox

Fischer-Cox Announce Engagement

Jory and Stacy Fischer, Sidney, are pleased to announce the engagement of their daughter, Cortnee Marie Fischer, to Brian Andrew Cox, son of Sue Cox and the late Gary Cox, Sidney.

Both are graduates of Sidney High School. Cortnee is attending Rocky Mountain College, Billings, MT.

Brian is employed with Sanjel. A June 1 wedding is planned in Billings.

Governor Hopeful Rick Hill Visits Sidney

By Jaimee Green

While Democrats and Republicans sort out who is going to take the lead and run the strongest campaign in the 2012 run for Montana Governor, it appears Republican Rick Hill and Democratic Attorney General Steve Bullock are ahead of everyone in funding their campaigns.

Governor hopeful, Rick Hill stopped in Sidney on his campaign trail last week to meet with various business owners and government officials.

Hill's story includes a humble childhood as one of four children who grew up in



Rick Hill

a one room apartment in the back of a tire shop. He is one of the first children in his family to attend college and struggled as a single parent running a business in his earlier years.

He was elected as Montana's Congressional Representative in 1996. Prior to that, he was asked by Governor Marc Racicot to act as Montana State Fund Board of Directors chair. He also served on the Montana Science and Technology Alliance Board of Directors.

"Education is a primary focus issue for Rick Hill. He wants Montana students to have the educational opportunities needed to develop the skills they need to be successful. He is also passionate about streamlining government to alleviate inefficiencies to ensure government works with businesses and not against them" said Jessica Sena, media and scheduling assistant.

According to his website, the underlying cause of many of the state's problems in the funding of education, low wages and budget shortfalls stem from an under-developed economy. He envisions Montana as an economic powerhouse and wants to remove the barriers to this progress through tax cuts and priority budgeting.

In agriculture, he wants to keep Montana's producers competitive in the global marketplace and to continue growth in the state's agricultural arena.

Together with his wife, Betti, he lives in Helena. He has three grown sons.

Some of the candidates Hill is running against include Attorney General Steve Bullock, Ken Miller, former State Senator, Cory Stapleton, former State Senator from 2007-2008, Jim O'Hara, a current Chouteau County Commissioner, Neil Livingston, a relatively unknown Republican candidate and CEO of the crises management company called Executive Action. Livingston has also been an adjunct professor in Washington, DC, at Georgetown University.

The Montana Constitution prohibits two-term incumbent Governor Brian Schweitzer from seeking a third term in office.

The 2012 general elections are taking place on Nov. 6.

INDUSTRIAL SHOWING

Tues. - Thurs., Feb. 21-23
We Bought the Zoo @ 7:30 p.m.

Fri. - Thurs., Feb. 24 - Mar. 1
Contraband @ 7:30 p.m.

Centre Theatre

Adults: \$7
Students: \$5
Matinee \$5

Call Our Hotline for updates - 406-480-6684 (MOVIE) - Sidney

Join the Sidney Crew for their Open House Celebration

Wednesday, March 7

Attend Our Panel School

8:00 a.m. • Valley Pro Panels
2:00 p.m. • Valley Select Panels

Enjoy Lunch

- Burgers
- Brats
- Refreshments

Your Full Turnkey Valley® Dealer also offering these services:

- ★ Valley® Pivot Sales, Installation Service and Parts
- ★ Floating Irrigation Pumps, Installation and Repair
- ★ Water Well Drilling ★ Electrical ★ Pipelines
- ★ Directional Drilling ★ Drip Irrigation Systems
- ★ Irrigation Systems Insurance

One contractor to do it all. No subs needed.

AGRI INDUSTRIES

Williston, ND • 701-572-0767 or 1-800-735-4908
Sidney, MT • 406-488-8066 or 1-877-488-8066
Miles City, MT • 406-234-2309 or 1-800-207-0650
visit us at agriindustries.com

AGRI INDUSTRIES
Plumbing Division

Sax Electric
Sax Communications