

The Roundup

Phone (406) 433-3306
Fax (406) 433-4114
E-mail address:
info@roundupweb.com
www.roundupweb.com

Business Office:
Located at 111 West Main
Sidney, MT

Mailing Address:
P.O. Box 1207
Sidney, MT 59270

PRSR STD
U.S.
POSTAGE
PAID
The Roundup

ECRWSS
Postal Customer

Wednesday, September 13, 2017

Volume 43 • Number 31

Golf Year Round at ParTee Golf

By Dianne Swanson

Golfers rejoice! Dan and Monica Cayko have opened ParTee Golf in Fairview, offering golfers of all skill levels the opportunity to play year round.

Two top of the line Premium Commercial golf simulators accommodate your golf needs with driving range and short game practice, virtual tournaments and online play. There are different modes of play such as stoke, scramble, best ball, stable ford, skins and more.

The simulators let you play on 63 courses from around the world, allowing you to change your time of day, weather and even your elevation. The simulator displays the courses beautifully on an 8' X 12' screen in HD with top of the line graphics and sound. The touch screen monitor and custom computer system measure club head and ball data, making it easier than ever to perfect your golf swing. Up to eight people can play per machine.

The system uses real clubs and balls which can be brought in or are available for rent. An in-house washer will insure the equipment is clean.

Caykos decided to offer ParTee golf to provide the community with an extra activity, primarily in the wintertime, but also when it's too hot or wet to be on an outdoors course, or when those courses are busy with tournaments. It's also a great learning and practice tool for students.



Caykos plan to host a grand opening after beet harvest. Watch for league sign-ups as well. ParTee Golf is also a great place for private parties and concessions are available.

ParTee Golf is open from 9 a.m. to 9 p.m. Call ahead to reserve your tee time, 406-742-3630.

McKenzie County's 19th Annual Heritage Day September 16

Saturday, September 16th is the 19th Annual McKenzie County Heritage Day and the 25th anniversary of the McKenzie Heritage Association. Festivities begin at 11AM Central time in Heritage Park in Watford City, and all are welcome to celebrate. Admission is a free-will donation.

Beginning at 11:30, the District I Cattlewomen will serve slushburger meals for \$5 to prepare you for day-long festivities. A program to honor the country as well as recognition of several special individuals will take place at noon.

Throughout the day, Bob Petermann, cowboy poet and musician, will provide stories and music. An old-time photo booth, displayed artwork, rabbits, tractors, food and games will be available, until the close of the celebration at 5PM.

Kids' activities are scheduled throughout the day, from a sack race to who can hand on to an egg the longest, followed by finding the coins in a straw pile at 3PM. The Long X Arts Foundation will be providing art lessons, and Miss Karen Shaide will be in period dress and play an old time school teacher in the Nelson School. She will teach brief school lessons, starting at 1130, and again at 2pm.

Steve the Blacksmith will be demonstrating a horse-shoeing, and Leroy DeFoe will have his horse on display. Also on display will be rabbits from the Borderlands Rabbit Club, with the possibility of winning a rabbit to take home. From 1 to 3PM, a saw mill, threshing machine, stationary bailer and horsepower demonstrations will take place on the north end of the park.

Heritage Park in Watford City will be a-buzz with celebration of times past. If you attend in period dress, you just might get a special treat. For information, visit the McKenzie County Heritage Park Facebook page, facebook.com/mckenziecoheritagepark/.

County Commission holds Property Tax Increase to Net Zero for Coming Year

The McKenzie County Commission voted unanimously to hold property tax increases to net zero in the upcoming fiscal year. County Departments are being asked to cut 1% from their proposed budgets to stay in line with the Commission's goal.

A Public Hearing on the budget is set for Sept. 19th at 7:00 pm in the County Commission Board Room in the McKenzie County Courthouse. The public is encouraged to attend.

"This board determined that we want to hold county property tax to a net zero increase. So between now and budget hearing, departments are really going to have to work on finding efficiencies, and work through a list of priorities in an effort to find 1%," said Vice Chairman Vawnita Best.

Since the departments are being asked to cut 1 % from their budget requests, Chairman Doug Nordby explained the process leading up to the hearing: "We are planning on having all departments come in before the Commission on September 19th. Those departments then have the ability to make changes to their proposed budgets and explain enhanced line items or special project or need requests."

McKenzie County has one of the lowest mill levies in the State. A mill levy is based on total valuation of real property within the county; land, buildings and other above or below ground properties that are privately owned. The taxable valuation of real property in McKenzie County in 2016 was \$178,629,896. This year the value is estimated at \$242,000,000. A large portion of this increase in value is from 'non-wellhead' gas and oil industry facilities, commonly referred to as 'centrally assessed property', which makes up approximately 52% of McKenzie County's property value.

Residents who did not see an increase in valuation, will see a property tax decrease in the County portion of their taxes, recognizing that there will not be the 12% buy down in property taxes from the state of North Dakota this year. Auditor Erica Johnsrud explained, "McKenzie County recently performed a countywide property valuation to equalize property values, ensuring fair and equitable assessment. Where property value was not adjusted during the countywide valuation, the county portion of those taxes will actually go down this year."

McKenzie County's Preliminary Budget for 2018 is \$103,023,745. Roughly 30% of the county budget will be funded from Gross Production Tax (GPT). GPT is revenue in lieu of property tax for the impact of approximately 4,800 oil well heads in McKenzie County. GPT is redistributed to impacted local political subdivisions for oil and gas impacts by the North Dakota legislature. \$5.1 million in Property Taxes will be levied in 2018 to provide funding for a portion of County operating expenses. Those levies are:

- Agriculture property is 6% of the \$5.1 million.
- Residential property is 10.2 % \$5.1 million.
- Commercial property is 32% of 5.1 million.
- Oil and Gas (centrally assessed) property is 52% of \$5.1 million.

The McKenzie County Preliminary Budget Hearing is set for Tuesday, Sept. 19th at 7:00 pm, in the County Commission Board Room, 201 5th St. NW, Watford City, ND. MNAXLP

Cornerstone Bank Celebrates 35 Years and New Building by Giving Back to the Community



Since opening in Watford City 35 years ago, McKenzie County Bank has changed its name to Cornerstone Bank and has moved to a new location, but the bank's commitment to community has remained unchanged.

Scott Swenson, a Founder of McKenzie County Bank and Cornerstone Bank Corporate Board Member, is on the McKenzie County Healthcare Board of Trustees. He says, "Since our inception 35 years ago, we have always maintained a strong commitment to giving back to this community. One of the key components to a thriving community is a strong healthcare system, and we will be helping to raise funds for the new Cardiac Rehabilitation Unit during our new building grand opening, along with thanking our many loyal customers and friends."

The grand opening for Cornerstone Bank's new location is set for September 19-21. All week the bank invites you to bring in your loose change to their coin counter and you may choose to donate it to the Electrocardiogram (ECG) in the Cornerstone Cardiac Rehabilitation Unit at the new McKenzie County Healthcare medical facility. Cornerstone Bank will provide matching money for donations.

On Tuesday, September 19, representatives from the McKenzie County Healthcare System as well as Anova Health and Sanford Health will be at the bank with information about the services they provide. At 10:00 a.m. Lieutenant Governor Brent Sanford will be on hand for the flag raising and ribbon cutting. At 5:30 that afternoon, the 5K for \$5K Wellness Walk/Run will once again raise money for the ECG at the new medical facility. The walk will begin and end at the Kent Pelton Nature Park. Participants should pre-register at the bank or at https://www.runreg.com/cornerstone. Pre-registrants will receive t-shirts while supplies last. The registration fee is \$25 (plus an additional \$2.90 for online registration).

"Thank you to Cornerstone for always being steadfast supporters of McKenzie County Healthcare Systems! Not only have they been generous contributors to the new medical facility, but also are excellent at championing local participation, like the walk/run where proceeds will be allocated to an electrocardiogram machine for the new facility," said Daniel Kelly, CEO of

McKenzie County Healthcare Systems.

On Wednesday, September 20 the bank is taking time to thank the community as they serve a free BBQ from 11 a.m. – 1 p.m. They are also putting "bonus bucks" in their new drive up ATM as an added perk.

The grand opening celebration wraps up on Thursday, September 21 and as the bank is a proud supporter of the school music department, they will host local youth musicians to provide music throughout the day. The Cornerstone Team will also be doing Random Acts of Kindness in the community.

"It's fitting that Thursday is National Gratitude Day. We're so grateful for this community, the healthcare system, the school system and our loyal patrons," says Jane Swenson, a Founder of McKenzie County Bank and Cornerstone Bank Corporate Board Member.

The new Watford City Cornerstone Bank location is 106 8th Ave SE (on Hwy 85 to the east across from Heggen Equipment). McKenzie County Bank was started in Watford City in 1982 by the Darold Petersen family, who also owned and operated Lakeside State Bank in New Town, originating back to 1952. The Petersen family remains Cornerstone Banks' largest shareholder. McKenzie County Bank was formed on the premise of serving the community and helping customers, which remains true today at Cornerstone Bank.

Cornerstone Holding Company, based in North Dakota, is the parent company of Cornerstone Bank. One of North Dakota's ten largest financial institutions, Cornerstone Holding Company is an \$820 million financial institution. Cornerstone Bank has North Dakota locations in Bismarck, Dickinson, Fargo, Makoti, New Town, Parshall, Plaza, Watford City and a South Dakota location in Sioux Falls. There are Cornerstone Mortgage offices in Grand Forks and Minot, North Dakota along with Aberdeen, South Dakota. Cornerstone Bank provides an expansive product offering while staying true to their mission of providing access to financial experts who give straight answers and the best possible financial options. Cornerstone's offerings include business, ag and personal loans; deposits and cash management services; online and mobile banking along with mortgage services.



REAL ESTATE FINANCING
For Home Purchases & Refinancing
Stop in today and see Janet Sergent in Sidney



Richland
FEDERAL CREDIT UNION

www.richlandfcu.com
201 West Holly St. • Sidney, MT (406) 482-2704
18 East 2nd St. Culbertson, MT (406) 787-5890



Yellowstone Chiropractic Clinic
(406)-433-4757 222 2nd. Ave. SW
1-866-433-4757 Sidney, MT 59270



Dr. Ryan Laqua
Chiropractic Physician &
Certified Medical Examiner

• Sports Injuries • DOT Physicals
• Personal Injuries & Pain Conditions



State Farm
Providing Insurance and Financial Services

**AUTO • HOME
LIFE • BANK
HEALTH • BUSINESS**

Michele Herres
Agent
216 S Central Ave • Sidney, MT 59270
Bus: 406-488-2400 • Fax: 406-488-2405
michele@herresinsurance.com

Thank You

The family of Louise Asbeck would like to thank the community for their generous support during this difficult time. Thank you to the Sidney Police Department and the Sidney Ambulance crew for your fast response and for being so supportive of our family. Also thank you to Father Jim, Father Tran, and the Catholic Daughters for the beautiful service. We never know what life has in store for us but it is wonderful to live in a community that is so supportive when we need it. Thank you for the phone calls, cards, food and for stopping by to check on our family. It was greatly appreciated.

God Bless.
– Mitch & Kathy, Gene & Tanya,
Kemp & Laurie, Nicole & Tim



Pickup And Delivery Dates:
Sidney: Mon & Thurs
Watford City: Wed & Sat
Bainville: Wed & Sat

Serving Watford City At Meyer's Department Store
200 N Main • 701-444-2906 | Mon-Fri: 10am - 6pm • Sat: 10am - 5pm
Serving Sidney At Big Sky Embroidery And Design
108 E Main • 406-433-7679 | Mon-Fri: 10am - 5pm
Serving Bainville At Rustic-N-More
Main Street • 406-480-3871 | Wed-Sat: 10am - 7pm

DRY CLEANING | SHIRTS & JEANS STARCH | WELDERS STARCH
1129 2nd Ave W • Williston, ND | 701-572-3734 | www.willistondrycleaners.com
Mon-Fri: 8am - 6pm • Sat: 9am - 3pm

We Welcome News & Sports Stories!

Fax To: 406-433-4114 • Call: 406-433-3306
Email To: info@roundupweb.com
Bring Stories To 111 W. Main • Sidney, MT





**The Roundup
Help Wanted**

The Roundup Newspaper is looking for a freelance reporter to cover area events and write feature stories as needed. Pick up an application at The Roundup office located at 111 West Main, Sidney or call 406-433-3306 for more information.



STATISTICS

LAKE WATER LEVEL REPORT

	Sakakawea
Current Elevation.....	1842.2
Last Week's Elev.....	1843.3
One Year Ago.....	1838.7
Release For Day (C.F.S.)	24,000

SIDNEY WEATHER DATA

Source: MSU Eastern Agricultural Research Center

Date	High	Low	Precip.
September 4.....	72.....	51.....	0.00
September 5.....	71.....	40.....	0.00
September 6.....	80.....	38.....	0.00
September 7.....	85.....	41.....	0.00
September 8.....	89.....	46.....	0.00
September 9.....	94.....	53.....	0.00
September 10.....	89.....	57.....	0.00
Total YTD Precipitation.....			5.17

OBITUARIES

Jose “Joe” Reyna, 71 Sidney, MT formerly of Savage, MT

Memorial services for Jose “Joe” Reyna, 71, of Sidney, MT formerly of Savage, MT were held at 11 a.m., Saturday, September 9 at the Richland County Event Center in Sidney, MT under the direction of Fulkerson-Stevenson Funeral Home of Sidney, MT.

Remembrances, condolences and pictures may be shared with the family at www.fulkersons.com.

Joe died on Saturday, September 2 at Sidney Health Center, Sidney, MT.

Alberta M. Wilkison-Sowle, 95 Billings, MT formerly of Sidney, MT

Funeral services for Alberta M. Wilkison-Sowle, 95, of Billings, MT, formerly of Sidney, were held at 10 a.m., Thursday, September 7 at Fulkerson-Stevenson Memorial Chapel in Sidney with Pastor Joel Westby of Pella Lutheran Church officiating.

Interment was held in the Fairview Cemetery, Fairview, ND under the direction of Fulkerson-Stevenson Funeral Home of Sidney.

Remembrances, condolences and pictures may be shared with the family at www.fulkersons.com.

Alberta died early Monday morning, September 4 at Sweet-water Assisted Living, Billings, MT.

Youth Art Classes Starting Sept. 14 in Watford City

The Long X Arts Foundation out of Watford City will be hosting two youth art classes this fall, every Thursday starting on September 14 and running through November 2nd at the Rough Rider Center in Watford City.

The first class is for homeschoolers of all ages and will focus on Modern European Artists. It will be held from 10-11:15 am.

The second class is for After School Artists and will focus on Elements of art for grades 4-7. This class will run from 3:45 - 5:15 pm.

Register at www.longxarts.com/events

Each class is \$60 for the full 8 week course.

The mission of the Long X Arts Foundation is to enrich the lives of Watford City and McKenzie County community members and youth by offering unique opportunities for arts-based development, cultivation and entertainment.

Questions, contact Jessie Scofield, Director at longxart@gmail.com or 701-770-8659.

Williston Dog Jog Sept. 16; Proceeds To Benefit MonDak Animal Rescue Operations

The MonDak Animal Rescue’s (MDAR) annual Dog Jog will be held Saturday, September 16. The event will utilize proceeds from the fundraiser to support operational costs of the shelter. MDAR rescues/adopts more than 350 pets a year; making sure every pet sees a local veterinarian for vaccines prior to adoption. The Dog Jog also allows MDAR to keep its adoption fees lower and bring the spay/neuter clinic to the community every February.

CHI St. Alexius Health Williston to Sponsor Fashion Show Sept. 23

CHI St. Alexius Health Williston invites the community to a fashion show on Sept. 23 beginning at 5 p.m. at the Williston Area Recreation Center. The fashion show will focus on breast cancer treatment and reconstruction options in Williston. The reception will begin at 5 p.m. followed by catwalk at 6 p.m. There will be local shops, interactive booths, wine and cheese samples, massages, art and much more. Dress up for a girl's night out or enjoy a one-of-a-kind date night! The cost is \$10 per ticket.

New Program Aimed At Equipping And Inspiring New Leaders Coming Sept. 14 To Sidney

Much of small town life is run by volunteers who sit on boards, committees and councils. A new MSU Extension program is planned in Sidney to give new and seasoned volunteers information that will help them be more effective in their volunteer roles.

Leading Local, an innovative, one-day, activity-based workshop is planned in Sidney Thursday, September 14th from 8:30 a.m. to 3:30 p.m. at the USDA/ARS Research Center at 1500 North Central Avenue. The session will be presented by Dan Clark, Director of the MSU Extension Local Government Center. The cost to attend is \$20 if participants register before September 8 and \$25 after that date. Participants are encouraged to RSVP by calling the MSU Extension Richland County Extension office at 433-1206.

The Leading Local workshop will offer tips and insights that will help new volunteers feel more prepared to serve on boards and seasoned volunteers to feel more effective in their roles. Topics covered include best practices for running effective meetings, how to plan for action, information on personality styles and generations and how they might work better together.

Leading Local was developed in response to a need expressed by leaders across the state for help with their volunteers. In many small towns, board members have noticed that their volunteer base is shrinking and that their level of participation is changing. Leading Local was patterned from a successful program in North Dakota aimed at addressing the same issues.

MSU Extension Local Government Center is located on the MSU Bozeman campus and provides training, technical assistance, and research to local officials to strengthen the capacities of Montana’s local governmental units to deliver essential services efficiently.

MNAXLP

EVENTS
SEND US YOUR EVENTS!
THE ROUNDUP: PO Box 1207
111 West Main • Sidney, MT 59270
406-433-3306 • Fax: 406-433-4114 • Email: classads@esidney.com

RICHLAND COUNTY

Events in Sidney unless otherwise listed. MT Zone.

Wed., Sept. 13

11 a.m.-2 p.m. - **Sidney Chamber Member Appreciation BBQ** - Sidney Chamber parking lot, tailgate style, wear your gear.

Thurs., Sept. 14

8:30 a.m.-3:30 p.m. - **Leading Local** - A workshop for current and prospective members of elected or appointed boards, councils and committees. Fee: \$25. USDA/ARS Research Center, 1500 N. Central Ave., Sidney, MT. For more information call Richland County Extension Office at 406-433-1206 or email richland@montana.edu.

Fri., Sept. 15

8 a.m.-4 p.m. - **Vision of Hope Benefit** - Community garage sale! Antiques, household items, crafts, baked goods and lots more. This event continues 8 a.m.-2 p.m., Sept. 16. St. Matthew’s Gym, 310 7th St. SE, Sidney.

Sat., Sept. 16

7:30 a.m. - 12 p.m. - **Richland County Farmers Market** - Parking lot east of the Richland County Public Library, corner of 2nd St. NW and 2nd Ave. NW, Sidney, MT.

10 a.m. - noon - **Lonsdale Free Store Open** - Clothes and other wearable items available to anyone at no charge Lonsdale United Methodist Church, 205 3rd Ave SE, Sidney.

Mon., Sept. 18

5-7 p.m. - **Sidney Gymnastics Club Fall Registration At The Gym** - This event will continue on Sept. 19. For more information call 406-433-3008 or visit our facebook page.

5:30 p.m. - **Grief Recovery Method Group Meeting** - Steps to help you become more complete and move beyond a loss in your life. St. Matthew’s Parish Center, 310 7th St. SE, Sidney, MT. To register or for more information contact Deb Prevost, 406-433-2389.

7 p.m. - **Big Sky Concert Series Kickoff** - With Montana Repertory theatre’s “Raised In The Saddle.” MonDak Heritage Center. Season and individual tickets available at the door.

Wed., Sept. 20

5 - 10 p.m. - **Community Pint Night**- Meadowlark Public House. \$1 for every pint sold will go to support a community organization.

Sat., Sept. 23

8 a.m. - **Jamison Whiteman Benefit** - Starting with breakfast at the Elks Club, 123 3rd St. SW, Sidney, MT and then moving on to the Sidney Country Club at 11 a.m. with the Wanna Be An Elk Golf Scramble. Finishing up the day at the Elks Club at 6 p.m. with a free will offering pig roast and silent auction. For more information contact Ryan Laqua, 406-480-9052 or email rlaqua@midrivers.com.

Fri., Sept. 29

All day and evening - **Harvest Fest** - Shops at Fox Run.

Sales, kids activities and live music.

McKENZIE COUNTY

Events in Watford City unless otherwise listed. CT Zone

Thurs., Sept. 14

Youth Art Classes - These classes are every Thursday through Nov. 2. Art Class for Homeschoolers, Modern European Artists, 10-11:15 a.m.; After School Artists - Elements of Art. 3:45-5:15 p.m., \$60/student for 8 week course. Rough Rider Center, Watford City, ND. Register at www.longxarts.com/events. For more information contact Jessie Scofield, 701-770-8659 or jessieveeder@gmail.com.

Sat., Sept. 16

11 a.m.-5 p.m. - **Heritage Day** - Old-time machinery demonstrations, music, fun for the kids and more. McKenzie County Heritage Park, Watford City, ND.

5-9 p.m. - **Farmer’s Market & Burgers In The Park** - Enjoy entertainment and games as well as Lion’s Club burgers. Alexander Park on Manning Ave. New vendors are welcome, for more information call 701-828-3595. Alexander, ND.

Sat., Sept. 30

6 p.m. - **MCHS Women’s Day** - An evening get together for women to enjoy a meal and an inspiring Christian message from Bethany Hamilton. Rough Rider Center, Watford City, ND. For tickets visit <https://www.eventbrite.com>.

WILLIAMS COUNTY

Events in Williston unless otherwise listed. CT Zone.

Sat., Sept. 16

7:30 a.m. - **Community Appreciation Golf Tournament** - 18 hole team scramble at Eagle Ridge Golf Club, Williston, ND. Breakfast and lunch is included. \$100 per person/4 person teams, 7:30 a.m. registration/check-in, 9 a.m. shotgun start. Call 701-572-6500 to enter, limited to first 22 teams. Proceeds will go to the WACC Military Affairs Committee to support area veterans, soldiers, their families and the Freedom Monument. 9 a.m.-5 p.m. - **Blacksmithing Workshop** - Learn the basic techniques of blacksmithing with a free workshop presented by blacksmiths, Guy Pontoriero, Tom Brown, John Hutter and Stuart Reed. Forges and anvils will be available and everyone is encouraged to participate. Fort Union Trading Post National Historic Site. 701-572-9083.

9 a.m.-12 p.m. - **Farmers Market** - Home grown products, visits from the fire department and MonDak Animal Rescue, DIY crafts and food trucks. 110 W Broadway Parking Lot, Upper Missouri District Health Unit, Williston, ND. For more information call 701-580-9343 go to www.willistondowntown.com.

10 a.m.-2 p.m. - **Mondak Animal Rescues Dog Jog** - Walk around the park, free will offering lunch, photos with pets and more. Spring Lake Park, Williston, ND. For pledge forms visit www.mondakanimalrescue.org.

Sun., Sept. 17

3 p.m. - **“Sisters 4” Concert** - Free admission. Missouri-Yellowstone Confluence Interpretive Center. 701-572-9083.

Thurs., Sept. 21

5-9 p.m. - **Art & Wine Walk** - Browse a selection of art from different regional artists throughout downtown Williston while sampling a variety of wines. Tickets \$30 in advance at Cooks on Main or Castle Framing or \$40 the day of the event at The James Memorial Art Center.

7 p.m. - **Fort Buford History Book Club** - Join history buffs in a discussion of this month’s selected book, “As I Remember, Stories of Eastern Montana Pioneers,” by Gladys Kauffman. Free refreshments. Please call in advance, 701-572-9034. Missouri-Yellowstone Confluence Interpretive Center.

Fri., Sept. 22

9 a.m.-4 p.m. - **Confluence Quilters Monthly Meeting** - All experience levels invited and instruction provided. Bring your own lunch and unfinished projects. This event continues on Sept. 23. Missouri-Yellowstone Confluence Interpretive Center. 701-572-9034.

Sat., Sept. 23

5 p.m. - **Stylin’ Against Breast Cancer Fashion Show** - A fashion show paired with local shops, interactive booths featuring wine/cheese pairing, massages and more. Williston ARC, 822 18th St. East, Williston, ND.

DAWSON COUNTY

Events in Glendive unless otherwise listed. MT Zone

Fri., Sept. 15

4-8 p.m. - **Glendive Gun Show** - EPEC, 313 S. Merrill. This event continues 9 a.m.-6 p.m., Sept. 16 and 9 a.m.-3 p.m., Sept. 17. For more information contact Ernie, 406-377-3969.

Sat., Sept. 16

9:30 a.m.-2 p.m. - **Fall Craft & Quilt Bazaar** - Handmade crafts and quilts, bake sale, pie and coffee, caramel rolls, lunch served. Zion Lutheran Church, 401 Riverview, Glendive, MT. For more information call Verna Carpenter, 406-365-4465.

Wed., Sept. 20

12-1 p.m. - **Lunch ‘n’ Learn** - Join Laura Glueckert for “Introduction to Quilting.” Tea and coffee will be provided, bring your own lunch. Glendive Public Library Community Room. For more information visit <http://tinyurl.com/prgkapr>.

Sat., Sept. 23

9 a.m.-3 p.m. - **Veteran’s Stand Down** - Service providers will assist veterans with finding medical care, legal services, VA benefits, Adult Education, Employment and more. All veterans and families of veterans are welcome. EPEC, 313 S. Merrill Ave., Glendive, MT. For more information contact Karen Ohlin or Amy Deines at 406-377-3314 or any Eastern MT Job Service Office.

Sidney Health Center Set To Host Another “Live It Up!” Event For Local Women

Sidney Health Center will host its annual “Live it up!” event for women on Thursday, September 28 with a focus on living your best life. The theme for the evening is “Be the Best Version of You.”

Once again, the evening promises to be fun, educational and entertaining. The festivities will kick-off at the Richland County Fair Event Center with a social at 5:30 p.m. featuring a light menu catered by the Pizza House. During the social hour, there will be door prize drawings from local businesses, time to mingle with friends over a glass of wine, opportunities to learn more about managing your health, and a special corner dedicated to Sidney Health Center’s newest service, Advanced Aesthetics. Jacquelyn Free, FNP will be the emcee for the evening and will introduce our guest speaker, Sarah Calhoun, who is an inspirational, keynote speaker from White Sulphur Springs, Montana.

Sarah Calhoun has nearly two decades of leadership experience in both non-profit and small business sectors, working in the outdoor education industry before founding Red Ants Pants in 2006. Calhoun has been called a “revolutionary figure in rural business today” and a “powerhouse of inspiration for women in business.” Her dynamic style and inspiring experiences as an entrepreneur make her a highly sought after keynote speaker. She has given two TEDx talks, dozens of keynote addresses, and has been featured on national television programs such as CNBC, CNN, and Bloomberg.

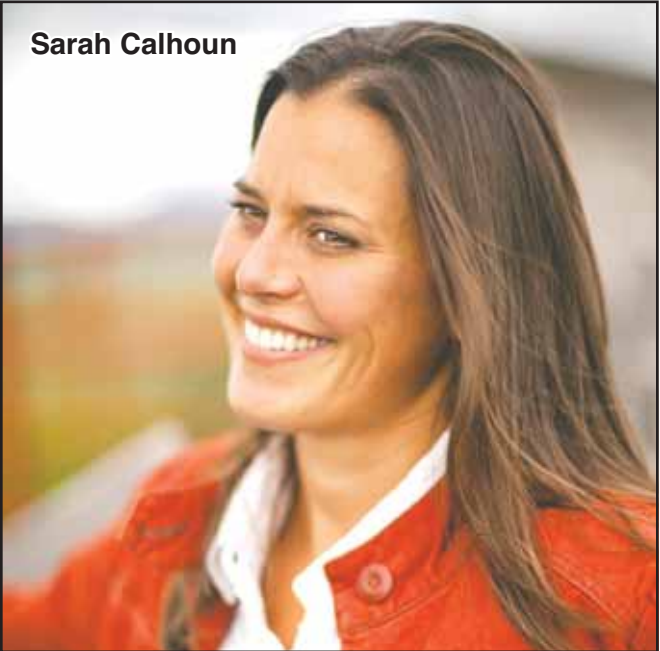
Tired of wearing men’s work pants that didn’t fit, Calhoun designed pants that would fit, function and flatter working women. Red Ants Pants are made in the USA and is based out of White

Sulphur Springs where the storefront, distribution center, and international headquarters all reside in an historic saddle shop. Known for their grass roots marketing efforts, including ‘Tour de Pants,’ the direct sales business model is proving effective.

To show support for the hard-working side of Montana and beyond, the Red Ants Pants Foundation was born in 2011. The Foundation supports women’s leadership, working family farms and ranches, and rural communities – the three things most important to Calhoun and the Red Ants Pants Community.

To take part in this fun, educational program individuals must be at least 21 years of age. All “Live it up!” events are designed to empower women to live life to the fullest by encouraging them to care for themselves and the ones they love.

Tickets are available at Sidney Health Center’s Caring Corner Gift Shop for \$25.00 per ticket prior to the event and \$30.00 at the door. Reserved tickets are also available for \$150 for six tickets through the Marketing and Communications Department. Call today to reserve your table at (406) 488-2595.



Sarah Calhoun



Rouge Ilc Day Spa Holds Ribbon Cutting

Rouge Ilc Day Spa held its grand opening and ribbon cutting last week. The full service spa offers manicures, pedicures, lash extensions, facials, massage, waxing, makeup and airbrush tanning in a beautiful, relaxing atmosphere. Pictured, front row, l to r, Laura Schieber, Sidney Chamber; Storm Yetter, massage therapist; Kelcey Fixen, owner and esthetician; Revel Goss, Tyler and Arien’s daughter; Arien Goss, owner and nail technician; Cheyanne Rauschendorfer, massage therapist; Susan Joy, Sidney chamber executive director. Back row, l to r, Kelcey’s significant other Chris Hart, Kelcey’s mom Carrie Fixen, Arien’s husband Tyler Goss and her mom Jakkie Waller. Rouge Ilc Day Spa is located at 118 S. Central Ave., Sidney. Call 406-433-4624 for an appointment. (Photo submitted)

MNAXLP

We Have What You Need For A

SUCCESSFUL HUNT!

- ✓ LIGHTED NOCKS
- ✓ FIREARMS & AMMO
- ✓ HUNTING LICENSES
- ✓ GAME CAMERAS



HIGH CALIBER SPORTS & **4 Athletics**
One Location To Serve You Better!

440 N Central Ave • Sidney, MT
Shops at Fox Run | 406-433-1800
Monday-Saturday: 9am - 6pm
Sunday: 10am - 4pm

Finish Off The

HARVEST FESTIVAL FUN

Fri, Sept 29 • 8pm - Midnight



Live Music

By
“The Relics”

Full Outdoor Beverages And Food

Montana Made Spirits and New Selection of Wines by Bozeman Spirits and George’s Distribution



520 N Central Ave • Sidney, MT
406-433-3300 | www.rodirongrill.com

Event will be held indoors if necessary due to inclement weather



A step in the right direction...

For personal service on all your home loan needs, call Cheryl or Julia today!

With over 50 years of combined real estate lending experience, Cheryl and Julia are now serving Dawson County and Wibaux County home loan purchases and refinances out of our Sidney bank location.

APPLY ONLINE ANYTIME AT STOCKMANBANK.COM



301 West Holly Street
Sidney: 433-8600

stockmanbank.com

©2017 Stockman Bank | Member FDIC



Cheryl VanEvery
433-8605
NMLS ID# 523475



Julia Hill
433-8618
NMLS ID# 403732

The McKenzie County Cowboy Association Presents

The 64th Annual NDRA State Finals

CHAMPIONSHIP RODEO

Fri & Sat, Sept 29th (7pm CT) And 30th (6pm CT)



Exhibition at 8am • Open at 10am

New This Year!

JACKPOT BARREL RACING

Saturday, September 30th

Starting at 8am


\$1,500 Purse

- Bareback Riding
- Bull Riding
- Bullfighters
- Ladies Barrel Racing
- Ladies Breakaway
- Men's All Round
- Pickup Men
- Rookie of the Year
- Saddle Bronc
- Sr. Men's Breakaway
- Steer Wrestling
- Team Roping Header
- Team Roping Heeler
- Tie Down Roping
- Women's All Round

MCKENZIE COUNTY FAIRGROUNDS, WATFORD CITY, ND


For more information go to NDRODEO.COM

Watford City provides unexpected amenities and comforts. This safe and friendly community features more than 800 rooms in stunning new hotels, dozens of restaurants from fine dining to casual eateries, busy cocktail bars, and an energetic downtown.
Visit www.VisitWatfordCity.com and click on Events




SAVAGE WARRIORS HOMECOMING

Wed: The Great Outdoors | Thurs: Tacky Tourist | Fri: Warrior Spirit Day




FOOTBALL

(L-R): Gentry Conradsen, Timothy Ricks, Gage Bloesser, Parker Tofte, Sloan McPherson, Jared Hofer, Andrew Waldie, Owen Nelson, Sawyer Thiel, Owen Nelson, and manager Nichole Kelley



VOLLEYBALL


Back (L-R): Bethany Wells, Rianna Clifton, Brynn Salsbury, Soda Rice, Emily Reynolds, Kayla Nelson, and Breanna Adolph. **Middle (L-R):** Shayanne Castro, Jordan Romero, Haylie Conradsen, Ashlind Conradsen, Alexia Papka, and Taryn Hagler. **Front (L-R):** Kiana Miller and Tyler Lien



ROYALTY

Back (L-R): Owen Nelson and Nick Moore. **Front (L-R):** Ashlind Conradsen, Emily Reynolds, Alex Couture, Brynn Salsbury, and Jordan Romero.

Good Luck!
From
THE SAVAGE MINE
PO Box 30 • Savage, MT
406-798-3651

TRIPLE

DISPOSAL
776-2500
SAVAGE, MT

Good Luck Warriors!
Prairie Electric

406-776-2474
prairieele@midrivers.com
Savage, MT

QUINNELL ELECTRIC
• Commercial
• Residential
• Remodels
• New Construction
Chuck Quinnell
406-776-2331

Craig's MEAT PROCESSING 776-2447
Savage, Montana
• custom meat processing
• curing & smoking
• sausage & Jerky
• wild game
Slaughter at the plant or your farm!

Good Luck All Area Teams!
(Miller's) Garbage Service

Savage, MT
406-776-2334


Sidney Sugars
INCORPORATED

Tri County Implement

2429 W. Holly St.
406-488-4400

Gem City Motors

2017-GMC-SIERRA
UP TO \$10,000 OFF
703 S. Central • Sidney
406-433-3120
www.gemcitymotors.com

PARTY CENTRAL
★ & Main Street
School Spirit!
You've Got The Pride, We've Got The Colors
Ongoing Sale!
105 East Main • Sidney, MT | 406-433-4386
Open Tues-Fri til 5:30 • Sat: 9-3
WWW.PARTYCENTRALANDPOPCORN.COM

HURLEY'S OILFIELD SERVICES
• Potable Water • Sewer System
• Loaders • Communications
• Backhoe • Trucking
• Skid Houses • Porta Potties
Dispatch: 701-844-1234
Fairview, MT

Richland Pump & Supply

(406) 488-8706
David Williams
Cell (406) 489-8706
Scott Ramus
Cell (406) 489-8707
1511 S Central Ave • Sidney


BLUE ROCK PRODUCTS CO.
501 9th Ave NE, Sidney
406-433-3403


INTERSTATE ENGINEERING
40 YEARS OF SERVICE
ENGINEERING • SURVEYING • PLANNING
(406) 433-5617
425 East Main, Sidney
part of the Sidney community since 1979
www.interstateeng.com
Montana | North Dakota | Minnesota | South Dakota

Roundup
A DARN GOOD LITTLE NEWSPAPER!
Sidney, Montana
406-433-3306

Parade of Homes Becomes Semi-Annual Event

Brenda Larson, owner of Creative Solutions in Sidney, has made the difficult decision to host the popular Parade of Homes every other year. Although the Parade will not take place this fall, Larson is anxious to do the event next year and already has some great homes lined up. She truly appreciates the co-operation she receives from homeowners who are willing to open their homes to the public for a very worthy cause. The event has raised over \$35,000 for the Boys and Girls Club of Richland County, with a goal of \$10,000 each year. Last year, Larson was unable to meet that goal due to declining ticket sales and advertisers in the program book. Time constraints, lack of homes, and the huge financial obligations required to pull off an event of the magnitude of the Parade of Homes dictated that there would not be an event in 2017. After careful consideration, Larson decided to make the move to a semi-annual event. "I believe we'll have a better turnout if we go to every other year," Larson explained. "Ticket sales were down last year, as well as the number of advertisers in the booklet. Plus, it's hard to find six homes every year. By going to every other year, the public will be excited about viewing the homes, home owners will have more time to prepare and we'll be able to continue the financial contributions to the Boys and Girls Club."

Area Football Action



Watford City's Carter Zenz, #28, breaks a tackle as he runs for a first down in Friday night's match up against Fargo Shanley at Fridley Field. Shanley defeated the Wolves 25-0. (Photo by Kathy Taylor)



Eagles Win Over Hardin

The Sidney Eagles traveled to Hardin this past Friday and came out with a win of 34-7. Jace Johnson gets ready to throw the football. The Eagles will host the Glendive Red Devils this Friday at 7 p.m. for homecoming. (Photo by Pam McGlothlin)



Score one for your savings...
with our great CD's!

18 Month Term CD

1.50% APY

Fixed rate for the Term!

18 month Term CD-annual percentage yield (APY) accurate as of 8/7/2017. Offer valid through 9/29/2017. Non-institutional funds only. Opening balance minimum of \$500.00. You must maintain at least the required minimum opening balance in the account each day to obtain the disclosed APY. Penalty may be imposed for early withdrawal. Automatically renews to a 24 month Term CD. You will have 10 calendar days after the maturity date to change terms or withdraw funds without penalty. Stockman Bank, serving our neighbors with integrity since 1953.

29 Month Bonus CD

1.75% APY

One-time rate change option & flexibility to add funds!

29 month Bonus CD-annual percentage yield (APY) accurate as of 8/7/2017. Offer valid through 9/29/2017. Non-institutional funds only. Opening balance minimum of \$500.00. You must maintain at least the required minimum opening balance in the account each day to obtain the disclosed APY. You may make unlimited deposits, minimum of \$250 each during the initial term until 14 calendar days prior to maturity date or until the balance of your account reaches \$100,000.00. Penalty may be imposed for early withdrawal. Automatically renews to a 24 month Term CD. You will have 10 calendar days after the maturity date to change terms or withdraw funds without penalty. Interest rate and APY will remain in effect until you exercise the one-time rate change option or until maturity. During the original term of the account, you may choose to exchange the interest rate you earn on this account for the rate the Bank is offering on a 24 month Term CD.

Stockman Bank

Montana's Brand of Banking

301 West Holly Street
Sidney: 433-8600

stockmanbank.com
©2017 Stockman Bank | Member FDIC

Rural Leadership North Dakota Short Course set for Watford City

By Marcia Hellandsaas
NDSU Extension Agent, McKenzie County

Does your community have a need for a project that you are interested in? Do you think your community can benefit from a project that you have in mind?

If you answered yes to one or both of these questions, the Rural Leadership North Dakota Short Course may be just the thing you have been looking for to get your project off the ground.

The Rural Leadership North Dakota (RLND) Short Course is an NDSU Extension Service sponsored program whose purpose is to provide leadership development opportunities to citizens across western North Dakota and eastern Montana.

Participants will have the opportunity to enhance their leadership effectiveness attributes, learn effective communication skills, understand and manage conflict, understand how people grow/change as leaders and understand the importance of service/volunteerism. All of these learning opportunities will be achieved as participants work on their chosen community project.

The RLND Short Course program will consist of five sessions that will run from 11:00 am to 4:00 pm CST in Watford City. The dates for the sessions are Tuesdays—October 10, 24, November 7, 21 and December 5. Session topics will include an

orientation to discuss your community project, discuss the RLND program and group activities to enhance networking capabilities; understanding behavioral styles of individuals; learning effective communication skills; understanding and managing conflict; and discussing rural living topics such as assimilating into small communities, the seven capitals of healthy communities, how to approach people and getting things done in small communities.

The RLND Short Course is open to anyone in western North Dakota and eastern Montana that desires to be an active learner through project work and who wants to work on a community project in which they have an interest and they feel will benefit their community.

The tuition for the RLND Short course is \$250 per participant and includes noon lunches, breaks and all short course materials. For McKenzie County residents, possible tuition assistance is available.

For more information, or to register for the RLND Short Course, contact Marcia Hellandsaas, McKenzie County Extension Agent, at 701-444-3451 or email marcia.hellandsaas@ndsu.edu. Registration and the \$250 tuition fees are due at the McKenzie County Extension Office, 201 5th Street NW, Suite 525, Watford City, ND 58854 by September 20, 2017.

Montana Centenarians To Be Honored In Glendive

The Montana Department of Public Health and Human Services (DPHHS) will honor Montana Centenarians Tuesday, September 12 at noon in Glendive at the Eastern Plains Event Center.

The luncheon is part of the 49th annual Governor's Conference on Aging. Lt. Governor Mike Cooney will serve as the event's keynote speaker.

"I have so much respect and admiration for our Montana Centenarians who live life to the fullest each and every day," Cooney said. "These individuals are wonderful representatives of our state, and set an excellent example for all of us to follow."

Approximately four Montana Centenarians from several eastern Montana communities plan to attend the event. A total of 9 Centenarians were honored September 7 in Kalispell.

These are Montanans who will turn age 100 or older as of December 31, 2017.

DPHHS recently asked Montana Centenarians their secret to longevity, the most amazing event in their life, a favorite quote and various other insights into their lives.

Here are a few of the responses of those planning to attend the Glendive luncheon:

Roselyn Lueck, age 100, Sidney. She was born and raised in North Dakota and moved to the Fairview area with her husband Ewald where they ranched. They were married 62 years. She loved living in the country raising her daughters and driving tractor. She loves spending time with her grandchildren. In regards to her secret to longevity, Lueck adds, "I don't know if there are any secrets, I've just been very fortunate."

Irene Moore, age 101, Culbertson. She was born in South Dakota and came to Froid with her parents to visit her brother. She states that the most amazing events in her life were meeting her husband and raising their two sons. Irene states that she has no secret to longevity. She does add though, "just eat good and get plenty of rest." She will turn 102 in December.

Emma Schaubel, 100 years old, Miles City. Schaubel was born in a homestead cabin in Huntley Project and worked her way through Eastern Montana University by working at the public library. She earned a two-year teaching certificate and taught in the rural schools near Billings, and later earned a four-year degree. During this time, she married and followed her husband from base to base. They eventually came back to Montana and he was eventually transferred to Miles City through his work. For 21 years, she continued to teach school in Miles City. Emma was able to travel to many countries. Even after retirement she continued to teach, organized an exercise class, a folkdance

group for seniors and took her program to rest homes, schools, the senior center and the Bucking Horse Parade dance on a float. In 1987 she was Homemaker Volunteer of the Year. Her secret to longevity: Most likely keeping busy teaching others.

Frances Logan Sunwall, age 100, Fairview. She was born and raised in North Dakota and a teaching position brought her to Sidney. She has two sisters that reached age 100 or older as well. She is proud to be included in that milestone. Her secret to longevity includes not only those genetics but she states, 'When it comes to staying young, a mindlift beats a facelift any day.' One of her favorite quotes is 'time will take care of everything except wrinkles.'

DPHHS also recently asked Montanans to submit the names of Centenarians, and that list is at 119 names and growing. The current DPHHS Centenarian list of those who are currently age 100 or older is as follows:

(2) are age 108
(2) are age 107
(3) are age 106
(8) are age 105
(7) are age 104
(12) are age 103
(24) are age 102
(25) are age 101
(36) are age 100

This year's Conference on Aging is designed to raise the public's awareness of the state's current senior population, as well as focus attention on the impact of the baby boomer generation which started turning 65 in 2011. The theme this year is: "Age Out Loud". The conference is being held in two locations this year in order to increase access.

Montana's 2010 census showed that Montana is home to 175 centenarians and that it is one of the fastest growing segments of our aging population.

This year's conferences will cover a variety of topics including family caregiving; new information on understanding abuse, neglect, and exploitation of the elderly; Alzheimer's, renter's rights, preventing falls, and more.

According to DPHHS officials, Montana has one of the fastest growing 65 and older populations in the nation. In Montana, 1,065 people turn 65 every month or 12,775 people per year. And, this trend will continue for the next 16 years.

Additional conference information can be found at: <http://dphhs.mt.gov/SLTC/aging/GovernorsConferenceonAging.aspx>

MNAXLP

Bring This Coupon In For An Oil Change

Includes:

- Labor • Oil Filter
- Up to 8 Quarts of Synthetic Oil
- Windshield Washer Fluid
- Top-off
- 27 Multipoint Inspection
- All Makes & Models

\$34.95*

Expires 12-31-17

CERTIFIED SERVICE

'Regular Price \$39.95

*SEE DEALER FOR DETAILS. OIL CHANGE PRICE EXCLUDES DIESEL ENGINES

BUICK CHEVROLET GMC

Gem City MOTORS

703 S. CENTRAL • SIDNEY, MT | WWW.GEMCITYMOTORS.COM | 406-433-3120

UNION GATEWAY AGENCY

Your Insurance Team Independently Representing:

~Life
~Health
~Medicare Supplement
~Medicare Part D
~Group Health
~Vision
~Dental
~Long Term Care

309 2nd St NW
Sidney MT 59270
phone 406-488-4366
fax 406-630-4433

UGA

BlueCross BlueShield of Montana

Affac

vsp

©2011 Vision Service Plan. All rights reserved. VSP and Vision care for life are registered trademarks of Vision Service Plan.

IN ORDER TO COOK UP SOMETHING GREAT,
**WE WILL BE
CLOSED SEPT 17-30**
PLEASE CALL IN TO PICK UP ORDERS

NEW!
ONLINE REGISTRY
*All Our Culinary
Classes Are Now Online*
Check Out Our Bridal Registry!

COOKS ON MAIN
for the everyday chef

701-572-COOK (2665) • (Fax): 701-572-2666
Open Mon - Sat: 9am - 6pm | 224 Main Street • Williston, ND
check us out at www.cooksmain.com or visit us on facebook

SLMC

SIDNEY LIVESTOCK MARKET CENTER

406-482-3513 • WWW.SIDNEYLIVESTOCK.COM

Working Hard To Build A Competitive Marketplace For Your Livestock!

Customer Appreciation BBQ

September 20 • 12pm

SALES EVERY WEDNESDAY

Wed, Sept 13th	Feeder Special & All Class Cattle Sale 9:00 AM
Wed, Sept 20th	Yearling & Calf Special & All Class Cattle Sale 9:00 AM
Wed, Sept 27th	Feeder Special & All Class Cattle Sale 9:00 AM
Fri, Sept 29th	Sheep Sale 11:00 AM
Wed, Oct 4th	Feeder Special & All Class Cattle Sale 8:00 AM
Wed, Oct 11th	Feeder Special & All Class Cattle Sale 8:00 AM
Wed, Oct 18th	Feeder Calf Special & All Class Cattle Sale 8:00 AM
Wed, Oct 25th	Feeder Calf Special ONLY 8:00 AM
Sat, Oct 28th	Bred Stock Special & Cows & Bulls ONLY 8:00 AM

Tim Larson: 406-480-2666 | Dustin Cymbaluk: 701-220-0813 | Christy Albin: Office Manager

Jeep

CELEBRATION EVENT

2017 JEEP
CHEROKEE
LATITUDE 4X4
stock #4872

MSRP \$33,485
Discounts & Rebates \$6,212
Sales Price
\$27,273

9 speed, automatic, diamond black crystal

2017 JEEP
RENEGADE
TRAILHAWK 4X4
stock #4939

MSRP \$29,800
Discounts & Rebates \$6,774
Sales Price
\$23,026

9 speed, automatic, jetset blue

ACTION AUTO

Our Website Is Open 24/7

433-2312 • 1-800-788-2312
www.actionautochryslerdodgejeep.com
220 East Main, Sidney, MT

GARY MCPHERSON
Hm: 488-7759

GARY SCHOEPP
Cell: 489-2312

JON NELSON
Cell: 206-669-5285

RAM DODGE CHRYSLER Jeep



SIDNEY EAGLES

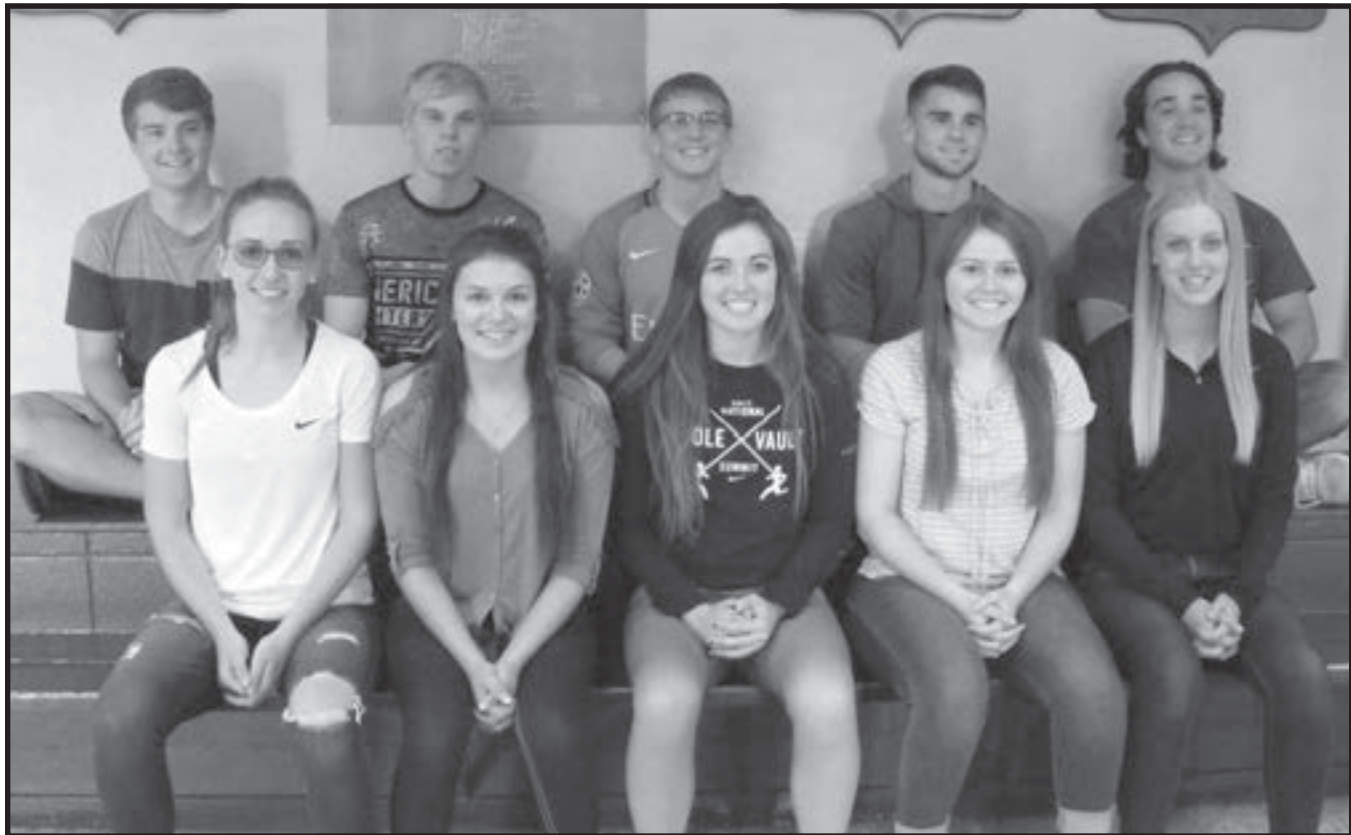
Homecoming Week

Mon-Fri, Sept 11-15

Homecoming Events

Monday - Black & White Day
Tuesday - Tourist Day
Wednesday - Celebrity Day
Thursday - Sitcom Homeroom Wars
Friday - Screaming Eagle Day

Coronation - Monday at 7 pm. **Parade** - Friday at 2:30 pm
Football - Friday at 7 pm. Dance to follow in the courtyard.



ROYALTY

Back (L-R): Ben Brodhead, Jace Johnson, Waylon VanBuren, Alec Lovegren and Sawyor Thogersen. **Front (L-R):** Breanna Frank, Holly Bouchard, Myka Steinbeisser, Madison Thiel and Tierney Messmer.



VOLLEYBALL

Back (L-R): Ainhoa Idoate, Carlee Strasheim, Olivia Kober, Lilli Seitz, Lauren Beenken, Maddy Hammer, MaKenzie Bjork and Madison Thiel. **Middle (L-R):** Brooke Franklin, Ali Merritt, Taylor Stewart, Hadley Garsjo, Shea Roberts, Curstine Gaffield, Aidan Wiese, Morgan Slade and Katie Berglund. **Front (L-R):** Michelle Loan, Alexa Iversen, Jaylen Baxter, Brooke Morrill and Rebecca Aldrich. Not picture Cassidy Larson, Riley Thiessen, Zoe Morrill, Maddison Peters, Ashlynn Kessel, Jenna Baxter, Alexa Iverson and Michelle Loan.



CROSS COUNTRY

Back Row (L-R): Claire Frank, Sean Earle, Clayton Olson, Breanna Frank, Will Steinbeisser, Cole Roberts, Keenan Earle, Connor Fink. **Middle (L-R):** Erin Erickson, Rae Hintz, Josie Yockim, Brandon Smith, Julian Imhof, Abby Reitz, Alex Messer, Christian Green. **Front (L-R):** Riley Jimison, Patrick Prince, Kaiden Cline, Everett Jensen, Whitney Shaffer, Brianna Lunderby, Janelle Brien, Serenity Kuntz.

ARMSTRONG LAW OFFICE P.C.

Licensed in Montana and North Dakota | 212 S. Central, Sidney

Lee. E. Armstrong
 armslaw@middrivers.com

406-433-7700
 212 S. Central • Sidney, MT



Experience the Eagle Country Difference!

Mon-Fri: 8am - 5pm
 Sat: 9am - 1pm

215 East Main St • Sidney
 1(800)482-1810 • 433-1810



• CARGO • FLATBED
 • UTILITY • PARTS • REPAIRS

Yamaha Golf Carts | Traeger Grills
 Cell: 406-480-7332
 Office: 406-433-1888
 34940 Hwy 23 • Sidney, MT



Mon-Sat: 9am - 6pm
 Shops at Fox Run
 Sidney, MT | 406-433-1800



BLUE ROCK PRODUCTS CO.
 501 9th Ave NE, Sidney
 406-433-3403

Don't Forget...

• Softshell Saturday
 • Taco Tuesday
 • Taco Bravo Thursday



724 S. Central Ave
 Sidney, MT
 406-433-2295

Richard L. Fink, D.M.D.
 Erin B. Fink, D.D.S.



FINK DENTAL CENTER
 122 2nd Avenue S.E.
 Sidney, MT 59270
 406-433-4422



Richland County Fair & Rodeo
August 1-4, 2018
 The Fairgrounds & Event Center are available to rent. Call or email for scheduling.
 PO Box 1026 • Sidney, MT
 406-433-2801 | jlarson@richland.org
 www.richlandcountyfairandrodeo.org

ONGOING SALE!

WE'VE GOT VARIOUS SPIRIT ACCESSORIES AVAILABLE IN ALL YOUR SCHOOL COLORS!

PARTY CENTRAL & Main Street

Open Tues-Fri til 5:30 • Sat: 9-3 | 433-4386 | 105 E Main • Sidney, MT



Mon-Thurs: 9-12 & 1-5
 Closed Friday
 2405 West Holly St.
 406-433-2400
 screenplay@middrivers.com

MUNCHERS FOLLOWING THE HOMECOMING GAME!



804 S. Central Ave • 406-433-4636



Terrific New Menu!

Register To Win a Mexican Getaway after Eagle Sports Action



We've Got NFL Sunday Ticket So You Won't Miss Your Favorite Game!

Gem City MOTORS

2017-GMC-SIERRA



UP TO \$10,000 OFF
 703 S. Central • Sidney
406-433-3120
 www.gemcitymotors.com

It's All About Saying Goodbye

FULKERSON STEVENSON FUNERAL HOME

315 Second St. NW
 Sidney, MT 59270
 406-488-2805
 email: ffh@fulkersons.com
 www.fulkersons.com

Hedahls

Auto Value Parts Stores

115 2nd Ave SE
 Sidney, MT
 406-482-3304
1-800-962-7068



Mending Services
 ATM • Wi-Fi
 Open 24 Hours
406-433-9274

115 9th Ave. NE, Sidney
 (one block north of Farm & Home on the truck route)

Good Luck!



406-480-5570
406-433-2504



1151 S. Central • Sidney, MT
 Open Daily 6am - 10pm
Grocery 433-2305

reynoldsmarket.com



Call your local agent
Cathy Hintz
406-488-8326
 2405 W. Holly St. • Sidney

ELK RIVER PRINTING

Your 1-Stop Full-Service Print Shop
 ALL COMMERCIAL PRINTING
 Full Color Marketing Materials
 Color Copies • B&W Copies
 Lamination • Specialty Papers
 Card Stock

433-4375 • Sidney, MT

STOP IN AFTER THE GAMES!

- **ATM • Full Bar & Tap Beer**
- **Friendly Atmosphere & Service**

**10+ U-1
Machines**



222 S. Central • Sidney, MT | 406-433-7222 | Mon-Fri: 9am - 5pm | "Customers are the jewels in our crown"

**GOOD LUCK SIDNEY
EAGLE FOOTBALL!**

**Jones
Construction
Service Inc.**
406-433-2987

*Proud parents & grandparents
of Jett Jones*

**"Dig 'er Done!"
GORDER
TRENCHING**

- Trenching for new and existing Home Waterlines
- Your local Montana Fiberglass Stock Tank Dealers

Specializing in Farm & Ranch Waterline and Water Tank installation

Shane & Lisa Gorder
482-9672
11685 CR350 • Sidney

FRONTIER
Heating • Refrigeration • Air Conditioning
SIDNEY, MT
488-4657
Sales • Service • Installation
TRANE

**Rau
Elementary
School**

406-482-8725
12138 Cnty Rd 350
Sidney, MT

GOOD LUCK!

SONDA'S
FR CLOTHING & EMBROIDERY

Office: 406-433-6757
Fax: 406-433-6755
2221 S. Central Ave • Sidney
www.sondassolutions.com

**Richland
Farm & Supply**

(406) 488-8706
David Williams
Cell (406) 489-8706
Scott Ramus
Cell (406) 489-8707
1511 S Central Ave • Sidney

**INTERSTATE
ENGINEERING**

40 YEARS OF SERVICE
ENGINEERING • SURVEYING • PLANNING
(406) 433-5617
425 East Main, Sidney
part of the Sidney community since 1979
www.interstateeng.com
Montana | North Dakota | Minnesota | South Dakota

**Olson
Plumbing
& Heating**

PO Box 375 • Sidney, MT
482-4027

**East-Mont
Enterprises Inc.**

Candy • Paper Goods
Cleaning Supplies
& More!

608 E. Main • Sidney
Wholesale Distributors
406-433-2910



FOOTBALL

Bottom (L-R): Alec Lovegren, Jarred Vojacek, Boston Peters, Bryce Thompson, Kolby Hutzenbiler, Jace Winter, Cooper McGlothlin, Nick Edwards. **2nd Row (L-R):** Kadin Lefors, Christian Dean, Jordan Darby, Jett Jones, Trey Fischer, Carter Johnson, Brody Skogen, Waylon VanBuren, CJ Nevins. **3rd Row (L-R):** Keelen Geiser, Jaxson Franklin, Tucker Swigart, Jace Johnson, Riley Jackson, Garrison Hughes, Jayden Vojacek, Tate Wieferich, Kaden Olsen, Kade Rindahl. **4th Row (L-R):** Kelton Lefors, Ritchie Crosby, Layne Swigart, Riley Waters, Riley Kosteletzky, Sawyor Thogerson, Wyatt Heringer, Slade Cutler, Taylen Eggum. **5th Row (L-R):** Kade Graves, Trevor Dean, Xander Mackenzie, Alex Lee, Ryan Wyman, Max Peters, Jackson Thogersen. **6th Row (L-R):** Jed Fox, Bill Steinley, Carter Hughes, Cash Cundiff, Ernie Clifton, Ryan Horner. **7th Row (L-R):** Dorian Obergfell, Ty Metz, Ben Wenzel, Dustin Coughlin, Trey Schepens, Ashton Swenson, Kolton Reid. **Photo by Pam McGlothlin.**



CHEERLEADERS

(L-R) Hailee Ivory, Hailey Christensen, Bryanna Brakefield, Lilana Johnson, Cheyenne Christian, Cammy Heck, Trinity Brown (back), Jessica Romo (front), Jasmine Harris (back) and Ashlee LeFores (front). **Photo by Jeniffer See, Life as I See it Photography.**

GOLF

Back (L-R): Andone Idoate, Tyler Iversen, Matt Hansen, Troy Pugh, Gabe Sweet, Ben Brodhead, Jaret Aisenbrey, Chase Morehouse, Kade Anderson, Thomas Moore, Keston LeRoy and Josh Aisenbrey. **Front (L-R):** Adriana Beyerle, Kaelyn Volk, Tierney Messmer, Torey Dahl, Emma Torgerson, Sarah Karanjai. **Photo by Pam McGlothlin.**

**SIDNEY
CARBURETOR
& ELECTRIC**

303 N. Central Ave.
Sidney, MT
406-482-3302

**HURLEY'S
OILFIELD SERVICES**

- Potable Water • Sewer System
- Loaders • Communications
- Backhoe • Trucking
- Skid Houses • Porta Potties

Dispatch: 701-844-1234
Fairview, MT

**Niehenke
Welding**



CNC Plasma
B&W Hitches • Grade 8 Steel Bolts
Since 1921
"Over 96 Years of Service"
312 N. Central Ave • Sidney, MT
406-433-1007

Sunny's
"It's Always Sunny at Sunny's!"
Family Restaurant

102 E. Main • Sidney
406-433-1839

Mon-Sat: 5am - 3pm
Fri & Sat: Midnight - 5am
Sun: 5am - 2pm

CHMS, P.C.

**CERTIFIED PUBLIC
ACCOUNTANTS**

Audits, Estate Planning, Business
Consulting, Estate Tax, Income Tax
PO Box 1067
104 Second Avenue SW
Sidney, MT
406-433-2092
Fax: 406-433-2095

**Small World
Child Care & Preschool**

Infants to 12 Years Old
Infant & Toddler Certified

Connie Sturgis

320 23rd Ave NW • Sidney, MT
406-488-7337
Mon-Fri: 6am - 5:30pm

**FARM & HOME
SUPPLY**

809 East Main
Sidney, MT
406-433-3400

Sidney Sugars

INCORPORATED

FooterS
PIZZA • SUBS • SALADS
433-SUBS

616 S. Central
Sidney, MT
406-433-7827
Open 10:30am Daily

**NORBY
INCORPORATED**

Sidney, MT

433-2266

**John Stockhill
JEWELERS**

"The House of Diamonds"

116 S. Central Ave
Sidney, MT
406-433-2702

**HAVE
FUN!**

From the Sidney School Staff

SIDNEY EAGLES

**Farm Bureau
Financial Services**

Peggy Errecart.....406-433-1509
Mark Martin.....406-433-4850
Cara Nelson.....406-433-1515

302 W Main • Sidney, MT
www.fbfs.com • www.mwfb.com

REESE & RAY'S

IGA

203 2nd St. NW • Sidney
406-482-3737
www.reeseandraysiga.com

GOOD LUCK!

ROUSTABOUT
SIDNEY MONTANA

406-433-6754 • Fax: 406-433-6755
2265 S. Central Ave • Sidney
les@slservices.net • www.slserviceinc.com

**Trinity County
Implement**
Sidney, Montana
808-628-1400

2429 W. Holly St.
406-488-4400

**THE DEPOT
Casino**
POKER KENO

HAS PIZZAZZ

PIZZA & FINE FOODS
• WE DELIVER •
Hwy. 16 S, Sidney, MT • 406-433-4650

Yellowstone Chiropractic Clinic

**DOT Physicals • Sports Injury Treatment
Other Injuries & Pain Conditions**

Dr. Ryan Laqua, Chiropractic Physician
406-433-4757 • 1-866-433-4757
222 2nd Ave SW • Sidney, MT

www.richlandfcu.com

Richland
FEDERAL CREDIT UNION

Sidney & Roosevelt County
Office In Culbertson

Eighteen Block Management Areas In Region 7 Restrict Access – For Now

By MT FWP

With the ongoing drought and fire danger, 19 Block Management Program co-operators in Fish, Wildlife & Parks Region 7 have restricted or closed access to their land until fire conditions improve.

The most updated list is available below, or people may visit the FWP website at fwp.mt.gov to check for any possible additional closures or changes to existing restrictions. Click on Hunting, then Block Management, then under the various regions to track closures.

“You may experience additional restrictions as you venture into the field,” said Region 7 Hunting Access Coordinator Travis Muscha. “Please be courteous and respect the restrictions put in place by landowners.”

FWP has no plans to

close hunting seasons, leaving it up to landowners’ discretion whether to allow access. The agency is monitoring its own sites but at present has no plans to restrict access.

There are hundreds of Block Management Areas in Region 7 offering access to more than two million acres, so even with the closures, plenty of opportunities on private and public lands remain. Block Management staff at FWP regional headquarters in Miles City are available to assist people seeking areas to hunt.

Hunters should be aware that all of Region 7 is under Stage 1 fire restrictions, which means that campfires in hunting camps are banned, and smoking is allowed only in a vehicle or in an area clear of vegetation. To check whether there are restrictions or closures in areas you may want

to hunt, visit inciweb.nwcg.gov.

Muscha mentioned some things sportsmen and women can do to help alleviate the start of any wildfires:

- Park your vehicle on bare ground or ground completely void of tall grass
- Drive only on established roads
- Avoid driving through trails that may have tall grass
- After you leave an area, please wait for few minutes to make sure that a fire has not started where your vehicle was parked

• Bring along a fire extinguisher or water-filled weed sprayer, shovel or axe

- Check on any fire restrictions in place in the area where you are hunting

Have a safe and successful hunting season!

BMA's Closed or Significantly Restricted Due to Fire Danger Region 7 Date of Report: September 11, 2017						
BMA #	BMA Name	County	Date Closed	Date Open	Type of Restriction	Comments
23	Kountz Ranch	Garfield	8/31/2017		Entire BMA Closed	Closed until fire danger conditions improve
52	June Loomis	Garfield	8/21/2017		Partial closure	Herman Ridge (North) portion of BMA is closed for the 2017 season due to high fire danger
72	Hubing Ranch	McCone	5/15/2017		Entire BMA Closed	Closed until fire danger conditions improve
73	Kondelik Ranch	McCone	9/11/2017		Entire BMA Closed	Closed until fire danger conditions improve
100	Lloyd Adams	Dawson	8/28/2017		Entire BMA Closed	Closed until fire danger conditions improve
106	Idland Ranch	Dawson	9/11/2017		Entire BMA Closed	Closed until fire danger conditions improve
107	Cedar Breaks Ranch - Type 1 & 2	Dawson	9/2/2017		Entire BMA Closed	Closed until fire danger conditions improve
116	Cullinan Ranch	Dawson	9/1/2017		Entire BMA Closed	CLOSED FOR SEASON
117	Country Cross Ranch	Dawson	9/1/2017		Entire BMA Closed	Closed until fire danger conditions improve
144	Thiessen Ranch	Richland	8/15/2017		Entire BMA Closed	Closed until fire danger conditions improve
156	Christiansen Farms	Richland	8/15/2017		Entire BMA Closed	Closed due to fire danger until Oct. 1
160	Biery Brothers Ranch	Rosebud	9/5/2017		Entire BMA Closed	Closed until fire danger conditions improve
202	Fluss Ranch	Prairie	9/1/2017		Entire BMA Closed	Closed until fire danger conditions improve
233	Country Cross Ranch	Prairie	9/1/2017		Entire BMA Closed	Closed until fire danger conditions improve
301	Osmo Farms	Custer	9/10/2017		Entire BMA Closed	Closed until fire danger conditions improve
315	Moore Ranch	Custer	8/15/2017		Entire BMA Closed	Closed until fire danger conditions improve
319	Hofmann Ranch	Custer	9/5/2017		Entire BMA Closed	Closed until fire danger conditions improve
325	Bice Ranch	Custer	8/15/2017		Entire BMA Closed	Closed until fire danger conditions improve
328	David Hoenke	Custer	9/5/2017		Entire BMA Closed	Closed until fire danger conditions improve
344	Crescent Cross Ranch	Fallon			Access Road Closed	Access Road south of ranch HQ closed due to high fire danger
349	Dale Schweigert	Fallon	8/15/2017		Entire BMA Closed	Closed until fire danger conditions improve
416	Pezzarossi Ranch	Powder River			Walk-In Only	Due to extreme fire danger, landowner has requested walk-in only hunting. Please park in short grass or bare ground and do not drive off county road. Smoke only in your vehicle.
465	Simonitsch Ranch	Carter			Walk-In Only	Due to extreme fire danger, landowner has requested walk-in only hunting. Please park in short grass or bare ground and do not drive off road. Smoke only in your vehicle.

A Fiddle, A Flute, and Some Friends, October 1st

Pastors Alvina Olstead and Melanie Martin-Dent will be hosting a musical program called “A Fiddle, A Flute, and Some Friends”, at Pella Lutheran Church in Sidney on Sunday, October 1, at 3:00.

Pastors Olstead and Martin-Dent developed the program after weeks of unsuccessfully planning to practice music together. Olstead, Pastor of the Ebenezer and Froid Lutheran congregations, is a fiddle-player, and Pastor Martin-Dent, of Lonsdale Methodist Church in Sidney, is a flute player. The pair had intentions to practice together, but could never seem to get together.

Olstead had the idea to invite others to play together as a fundraiser, and thus the name was born.


Admission will be a free-will offering that will support the Freedom in Christ Prison Ministry. The ministry is supported entirely by donations, and was started by the ELCA, the Evangelical Lutheran Church in America. As Martin-Dent explained, “the state no longer provides a prison chaplain at the men’s state prison in Deer Lodge. The Ministry provides a full-time prison pastor, who provides worship services, counseling, baptisms, and Bible studies”.

Martin-Dent is the chairperson for the Ministry Council, and was on board with Olstead’s idea for the event.

Olstead and Martin-Dent will be joined by vocalist Mary Pfau, singer and guitarist Pastor Wade Brinkhopf, the Sunrise Brass Ensemble, and a Sidney High School choir ensemble. Music will vary from classical, to hymns, to popular music.

Enjoy a variety of music from local artists and support the Freedom in Christ Prison Ministry at Pella Lutheran Church at 3:00PM on Sunday, October 1st.


MNAXLP

**POLARIS**

FACTORY AUTHORIZED CLEARANCE

REBATES UP TO


\$1,000



SPORTSMAN 2017 SPORTSMAN 570


BIGGEST SALE OF THE YEAR

FINANCING AS LOW AS **2.99% APR FOR 36 MONTHS**

**TYDAK**
MOTORSPORTS

TyDak Motorsports
313 12th ST SE
Watford City, ND

VISIT POLARIS.COM FOR MORE OFFERS

**POLARIS**

Offers vary by model. Rebate offers valid on select 2014-2017 new and unregistered models purchased between 7/26/17-9/30/17. Finance offers valid on select 2014-2018 new and unregistered models purchased between 7/26/17-9/30/17. See your authorized dealer for complete details. Rates as low as 2.99% APR for 36 months. Examples of monthly payments required over a 36-month term at a 2.99% APR rate: \$29.00 per \$1,000 financed; and at an 8.99% APR rate: \$30.87 per \$1,000 financed. An example of a monthly payment with \$0 down, no rebate, on APR of 2.99% APR for 36 months at a MSRP of \$9,999.00 is \$290.74, total cost of borrowing of \$947.50 with a total obligation of \$10,946.50. Down payment may be required. Other financing offers may be available. See your local dealer for details. Minimum Amount Financed \$5,000. Maximum Amount Financed \$50,000. Other qualifications and restrictions may apply. Financing promotions void where prohibited. Tax, title, license, and registration are separate and may not be financed. Promotion may be modified or discontinued without notice at any time in Polaris' sole discretion.

Warning: Polaris' off-road vehicles can be hazardous to operate and are not intended for on-road use. Driver must be at least 16 years old with a valid driver's license to operate. Passengers, if permitted, must be at least 12 years old. All riders should always wear helmets, eye protection, and protective clothing. Always use seat belts and cab nets or doors (as equipped). Never engage in stunt driving, and avoid excessive speeds and sharp turns. Riding and alcohol/drugs don't mix. All riders should take a safety training course. Call 800-942-9794 for additional information. Check local laws before riding on trails. ©2017 Polaris Industries Inc.



THE BUSINESS ROUNDUP

REACH 26,500 READERS IN THE ENTIRE MONDAK REGION

406-433-3306 OR 800-749-3306 ~ info@roundupweb.com

GO TO WWW.ROUNDUPWEB/DIRECTORY FOR DIRECT LINKS TO COMPANY WEBSITES & LOCATIONS



\$25⁰⁰/WK

For all your Farm/Ranch, Recreational, Residential, and Commercial needs.



Alan Seigfreid
Amanda Seigfreid

Jim & Janice Knudsen
Broker/Owners
email: alans@midrivers.com
Website: www.missouririverrealty.com

120 2nd St. N.E. • Sidney Mt. 59270

(O) 406-433-3010 • (C) 406-489-3010

**TIMBER**
AUTO BODY

SAND BLASTING | WINDSHIELDS | ROCK CHIPS | FIBERGLASS
From semi's to compact vehicles, bring it in! We'll work on it!
2004 12th St SE • Watford City, ND • PO Box 592 • 701-444-2834

KOLSTAD EYE CLINICS
SIDNEY MONTANA

FULL SERVICE
UPDATED EQUIPMENT • REASONABLE PRICES
Office Open Mon-Wed 9am - 5pm
Doctor Is In Every Monday. Walk-Ins Welcome On Mondays
1405 4th ST SW • Sidney, MT | 406-433-2705

Customer Service is Our #1 Priority

**BORDER**
STEEL AND RECYCLING, INC.

Farm & Ranch Products & Construction Materials. New Steel, Aluminum & Stainless.

Brady Smelser • Tim Mulholland • Kelly Moody • Bret Smelser • Ernie Gawryluk

Sidney Glendive Williston Plentywood

35002 GR 123 2703 W. Towne St. 13896 W. Front St. Hwy 16 East

406-433-7737 1-800-423-5219 1-800-820-5493 406-765-2624

1-855-810-2995

HOSE ASSEMBLIES WHILE YOU WAIT

**MFCP MOTION & FLOW**
CONTROL PRODUCTS, INC.

Fluid Connectors - Industrial Hose - Seals
Hydraulics - Pneumatics - Automation
Filtration - Racor - Instrumentation

406.433.1590
After Hours: 406.478.3116
Fax 406.433.1589

SIDNEY, MT
205 2nd Ave NE
WWW.MFCPINC.COM

**Parker Store**



**DOORBUSTN**
Portables & Septic Service, LLC
Blaine Rogers, Owner

PO Box 1003
Sidney, MT 59270

Office: (406) 433-7546
Fax: (406) 433-7596
Service: (406) 488-0916

www.doorbustnportablessepticsevice.com

YOUR COMPANY HERE



**Roundup**
WEB.COM

Ken Tyler
Utility Foreman

Boring & Trenching
Underground Contractors

Toll Free: 1-877-488-8066
Office: 1-406-488-8066
Fax: 1-406-488-8067
ktyler.agri@gmail.com

**AGRI**
INDUSTRIES

1775 S CENTRAL AVE • SIDNEY, MT 59270 | WWW.AGRIINDUSTRIES.COM

FAIRVIEW HOMECOMING

Monday - Saturday



Fairview Football

(L-R): Manager Lak Kloker, Asst Coach Josh Taylor, Easton Hopes, Sterling Sannon, Alex Schriver, Trevor Karst, Luke Lebsock, Gabe Schipman, Austin Calvert, Dylan Elletson, Brady Buxbaum, Braiden Taylor, JJ Klein, Carson Cayko, Jesse Selting, Paul Hardy, Mason Schirman, Rex Reynolds, Tom Neu, Bryce Neu, Steve Rice, Ethan Neu, Hunter Whitman, Cody Asbeck, Kaden Skogas, Alex Young, Tyler Woertink, Parker Sian, Will Smies, Head Coach Levi Seitz, Manager Gerit Johnson, **Not pictured:** Asst. Coach Keith Bieber.



Fairview Volleyball

Back (L-R): Emily Sundheim, Jadyn Gackle, Ally Young, Logan Schipman, Hanna Skov, Emily Axtman, Alexis Sundheim, Jae Kloker, Torrie Hurley, Bailee Vitt, Amber Berry, Bailey Seader, Mackenzie Hall, Becca Deming, Macy Seadeek, & Montana Zevenbergen. **Front (L-R):** Asst. Coach Amy Karst, Head Coach Anil Kara, & Manager Karissa Martinez.



Fairview Cross Country

(L-R): Lexie Selting, Sky Schirman, Ashley Karst, Steph Nay, Ashton Neu, Matt Hurley, Britnee Gullikson, Head Coach Bert Olson. **Not Pictured:** Tanner Poulson, Zurra Dzhuzumkulova, & Albert Garcia



Fairview Royalty

(L-R): Addy Kortess, Landin Skov, Sierra Rowlett, Rex Reynolds, Jade Lawhead, Torrie Hurley, JJ Klein and Bailee Vitt.

GOLD RUSH CASINO

504 South Ellery
Fairview, MT
Lounge: 742-4653 • Office: 742-4654
Open From 10am - 2am

Homecoming Week Events

Mon: Mardi Gras Day | Tues: Trick or Treat Day | Wed: Ranch Day | Thurs: Heroes vs. Villains Day
Fri: Crazy Blue & Gold Day (Football at 7pm, Dance 10pm-12am)
Sat: (Volleyball at 4pm)

HOTEL ALBERT
Lounge & Casino

419 S. Ellery
Fairview, MT
406-742-5164

DOUBLE BARREL SALOON & CASINO

Open 10am - 2am Daily
401 Ellery Avenue
Fairview, MT
406-742-8110
Steakhouse Hours:
Sun-Thurs: 5-9pm
Fri & Sat: 5-10pm

NEU'S SUPERVALU

- Grocery • Bakery
- Fresh Meat • Beer
- Ice • Snacks
- Full Service Deli

406-742-5441
303 S Ellery St • Fairview, MT

NEU CONSTRUCTION, INC.

- Oil Field Roads & Locations
- Reclaim Work
- Gravel & Scoria Hauling

Fairview, MT
406-742-5549
neuconst@midrivers.com

406-742-5224

Water Hole #3

Fairview, Montana
416 S. Ellery

THE OASIS GREENHOUSE

3½ miles north of Fairview on Hwy 58
701-744-5752
oasis@midrivers.com

POWDER KEG

EST. 1972

Family Dining
Open 4:30 pm Tue-Fri
2 pm Sat & Sun
Fairview • 406-742-5180

Mon-Kota, Inc.
Fertilizer & Irrigation Sales & Service

Reinke plus program
Platinum Plus Certified
Fairview, MT • 701-844-5300

Reinke
MORE RIGHT THAN RAIN

GOOD LUCK FAIRVIEW WARRIORS!

Call 742-5261 for Your Appointment Today!

MONDAK FAMILY CLINIC

An Outreach Service of
SIDNEY HEALTH CENTER

M-TH: 8:30am - 5pm
Fri: 8:30am-Noon
304 S Ellery Ave • Fairview, MT

HAVE FUN!

From the Fairview School Staff

FAIRVIEW WARRIORS

HURLEY'S OILFIELD SERVICES

- Potable Water • Sewer System
- Loaders • Communications
- Backhoe • Trucking
- Skid Houses • Porta Potties

Dispatch: 701-844-1234
Fairview, MT

Body Bliss MASSAGE

Cammi Seader

406-480-5180
812 9th St West
Fairview, MT
Open 8am - 5pm

Good Luck All Area Teams!

Millers Garbage Service

Savage, MT
406-776-2334

Richard Pump & Supply

(406) 488-8706
David Williams
Cell (406) 489-8706
Scott Ramus
Cell (406) 489-8707
1511 S Central Ave • Sidney

INTERSTATE ENGINEERING

40 YEARS OF SERVICE

ENGINEERING • SURVEYING • PLANNING
(406) 433-5617
425 East Main, Sidney
part of the Sidney community since 1979
www.interstateeng.com
Montana | North Dakota | Minnesota | South Dakota

CASE III

County Implement

Sidney, Montana
406-488-4400

2429 W. Holly St.
406-488-4400

PARTY CENTRAL

8th & Main Street
POPCORN THEATRE

School Spirit!
You've Got The Pride, We've Got The Colors
Ongoing Sale!

105 East Main • Sidney, MT | 406-433-4386
Open Tues-Fri till 5:30 • Sat: 9-3
WWW.PARTYCENTRALANDPOPCORN.COM

GOOD LUCK!

ROUSTABOUT

406-433-6754 • Fax: 406-433-6755
2265 S. Central Ave • Sidney
les@slservices.net • www.slserviceinc.com

pepsi

BLUE ROCK PRODUCTS CO.

501 9th Ave NE, Sidney
406-433-3403

GOOD LUCK!

SONDA'S

FR CLOTHING & EMBROIDERY

Office: 406-433-6757
Fax: 406-433-6755
2221 S. Central Ave • Sidney
www.sondassolutions.com

ELK RIVER PRINTING

Your 1-Stop Full-Service Print Shop

ALL COMMERCIAL PRINTING
Full Color Marketing Materials
Color Copies • B&W Copies
Lamination • Specialty Papers
Card Stock

433-4375 • Sidney, MT

Gem City MOTORS

2017-GMC-SIERRA

UP TO \$10,000 OFF
703 S. Central • Sidney
406-433-3120
www.gemcitymotors.com

Sidney Sugars

Good Luck All Area Teams!

TRIPLE DISPOSAL

776-2500
SAVAGE, MT

The Roundup Classifieds

Reach Over 21,000 Readers Each Week In Eastern Montana & Western North Dakota And Always On The Internet at roundupweb.com
(Paypal required for online purchases)

Add a photo to your classy online! (additional charge)

Now Taking Credit Cards! (5% charge added to all transactions)

Get Up To 30 Words For Just \$9.25 • Deadline: Monday noon

HELP WANTED
DRUG AND ALCOHOL TESTER
Looking for a male drug and alcohol tester. Will be mostly in the office but may be required to do some mobile work. Furnished housing available. Call Rena, 406-489-1467.

FREELANCE PHOTOGRAPHER
The Roundup Newspaper is looking for a freelance photographer to cover area events and collect relevant info as needed. Pick up an application at The Roundup office located at 111 West Main, Sidney, or call 406-433-3306 for more information.

TIRES FOR SALE
\$100⁰⁰ Each
We've just purchased a semi-load of new Michelin LT 245-75-17, 10 ply pickup tires & Goodyear 265-70-17 pickup tires & are selling them for \$100 each - carry out price.
MAGNUM MOTORS
1820 2nd St W • Williston, ND | 701-572-0114

CARRIERS NEEDED
Need extra cash or want to get some exercise while getting paid? We have carrier routes available in most parts of Sidney. 406-433-3306 or fill out application at The Roundup, 111 W. Main, Sidney.

FREELANCE REPORTER
The Roundup Newspaper is looking for a freelance reporter to cover area events and write feature stories as needed. Pick up an application at The Roundup office located at 111 West Main, Sidney or call 406-433-3306 for more information.

INSTALLED WINDSHIELDS FOR MOST MAKES & MODELS ONLY \$240
MAGNUM MOTORS
Williston, ND • 701-572-0114 • 701-770-6375

FOR RENT
3 BEDROOM TOWNHOUSE
3 bedroom, 2 1/2 bath with attached garage, modern kitchen with appliances, Northview subdivision. Call 406-489-5195.

TRAILER SPACE
Trailer space for rent, sewer, water and electric. \$650/month. Call 406-798-3097.

HOUSE FOR RENT IN SIDNEY
Large 3,000 Sq. Ft., 3+2 bedroom with 2 1/2 bath and attached garage for rent near West Side School. Many refurbishments and updates with large family area. No smokers or pets and one year lease required. Credit check and renter history required. 406-488-6442.

LOOKING FOR SPACE FOR YOUR BUSINESS?
We have several retail/office space units available for rent in downtown Sidney. All utilities pd., free internet, cellphone booster, in-house restaurant (Mucho Si). Units may be remodeled to fit your needs. If interested call Linda at 406-489-1945 or see at 102 N. Central Ave.

FARM & RANCH FOR SALE
Portable corral panel trailers. Continuous fence 5 bar or 6 bar 20 foot sections. Gates made out of 2" pipe. Corner post station braces. Call for more information, 701-770-2260.

SIDNEY FEEDS SWEET PRO SUPPLEMENTS
Sweet Pro feed supplements and Redmond Salt products. For the best for your cattle and horses, call 406-488-4338.

VERMEER HAYING EQUIPMENT
See us today for all your haying & feeding equipment, sweeps & farm oil. Anderson Vermeer Sales & Service. Open Mon.-Fri., 8 a.m.-5:30 p.m. 701-828-3358 or 701-828-3482 (after hrs.). Alexander.

SERVICES
AIRCRAFT BUYING, SELLING AND APPRAISALS
Aircraft buying, selling and appraisals? Call Sidney Air Service, Inc for sales and acquisitions! Call 406-480-2024, ask for Barry.

R&L PAINTING
Will paint houses, barns, quonsets, silos, grain bins, etc. References available. R&L Painting, call 406-488-8244 or 406-480-4055.

PILOT SERVICE
You buy it we fly it. Single engine, multi engine, turbine. Aircraft management service also available. Call 406-480-2024, ask for Barry.

ROUND OR RECTANGULAR TABLES & CHAIRS FOR RENT
Parties, weddings, get together. Ultimate Showdown Assoc. Located at Hefty Seed Co. South of Sidney, has tables & chairs for rent. Will deliver. Call 406-488-4338.

MISCELLANEOUS WANTED
I am a strong buyer of old comic books that originally sold for 10¢ to 12¢ each when new. Call Tim, 303-517-9875, Colorado.

GRIEF RECOVERY SUPPORT GROUP
Are you suffering from one of the more than 40 losses in your life? Would you like help

that gives you steps to become more complete and move beyond your loss? There will be a Grief Recovery Method group starting Monday, September 18 at 5:30 p.m. at St. Matthew's Parish Center, 310 7th St. SE, Sidney. To register or for more information contact Deb Prevost at 406-433-2389.

GLENDIVE GUN SHOW
The EPEC building, 313 S. Merrill, September 15, 16, 17. Hours: Friday 4-8 p.m.; Saturday, 9 a.m.-6 p.m.; Sunday, 9 a.m.-3 p.m. Questions call Ernie, 406-377-3969.

GARAGE SALE
WATFORD'S "BIG ONE" IS COMING
Women of First Lutheran Church, Rummage Sale and Lunch, Watford City Civic Center. Rummage: Thursday, September 21, 2-7 p.m.; Friday, September 22, 9 a.m.-3 p.m. (\$1/bag Friday at 1 p.m.) Lunch Friday until 2 p.m., slush burgers, coleslaw, chips, homemade pie, lemonade, coffee.

HOME FOR SALE



Beautiful custom home on 10 acres, 1/2 mile off highway near Crane, MT. 4 bed/2 bath, large 40'x60' shop, several out buildings, private setting with canal on East & state pasture on West.
Call 701-260-1477

\$395,000 (OBO)

The Roundup Help Wanted



The Roundup Newspaper is looking for a freelance reporter to cover area events and write feature stories as needed. Pick up an application at The Roundup office located at 111 West Main, Sidney or call 406-433-3306 for more information.

THESE AND MANY MORE GREAT FAMILY HOMES!



\$221,000

This home opens immediately to a spacious living room and formal dining area. A newly remodeled kitchen, family room, and full bath complete the main level. Upstairs are 3 good sized bedrooms and a full bath. Downstairs you'll find additional living space as well as a second full kitchen. This home is centrally located near downtown on a large corner lot. #R8498



\$359,000

This 5 bedroom, 3 bath home is nearly new. Built in 2011, 1,500 sq. ft. on the main and 1,500 sq. ft. basement fully finished. Home sits on two lots in the Sidney Circle 2 Subdivision. This beautiful property is a must see. Call today to set up your showing. #R8526

310 14th St. SE, Sidney
406-433-4445

Or contact one of our agents at home:

Justin Jones, Broker/Owner 406-480-9525
Jerrian Franzen, Broker 406-478-3773
Dennis Wick, Agent 406-480-1550
Terran Hillesland, Agent 406-480-0129
Kristin Larsen, Agent 406-480-5139

NICK JONES REAL ESTATE
www.NICKJONESRE.COM

The Roundup Help Wanted



The Roundup Newspaper is looking for a freelance photographer to cover area events and collect relevant info as needed. Pick up an application at The Roundup office located at 111 West Main, Sidney, or call 406-433-3306 for more information.

Ranch For Sale

Richland County, Montana
20 miles south of Sidney, MT on Highway 261

5060 Acres Total
3780 acres deeded. 1280 acres states leases to transfer with ranch. 260 +/- acres tillable in Hayland. Annual Taxes: \$4,620 (2016)

\$3,500,000

Excellent Improvements & Well Watered
Cattle & machinery can be purchased from seller

*For Additional Information Contact Roger Cymbaluk
Basin Brokers, Inc. • PO Box 456 • 106 Main Street
Williston, ND 58802-0456 | 1-800-572-5560 • 1-701-572-5560*



Join our team! Job Opportunities

- Ambulance
Licensed Ambulance Driver
- Certified Nurse Assistant
Acute Care
Clinic
Extended Care
- Clinic Medical Assistant
- Environmental Services
Housekeeper
- Food Service
Cook
Utility Worker
- Information Systems
Technician
Project Lead
- Laboratory Medical Technologist/Medical Laboratory Technician



- Licensed Practical Nurse
Clinic
Extended Care
- Lodge at Lone Tree Creek
Resident Assistant
- Medical Staff Informatics
- Registered Nurses
Acute Care
CCU
Clinic
Extended Care
OB
Surgery
- Respiratory Therapist
- Surgical Scrub Technician

Check Us Out Weekly With:

The Roundup

Monthly With:

Or Online At:

Roundup WEB.COM



The Roundup

AUTO TRADER

YOUR VEHICLE HERE!
Give some details about your vehicle. Is it gently used, or basically new?

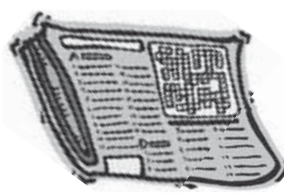


For Info, Call:
123-456-7890

\$12,345
OR BEST OFFER

ONLY \$17 A WEEK!
If you run it for two weeks & it doesn't sell, we'll run it for two more weeks **FREE!**
classads@esidney.com • (406) 433-3306 for details

Get Your Roundup, Ag Roundup or Visitor's Guide In Williston at:



- 3 Amigos
- Gramma Sharon's
- Kum 'n Go (3 Locations)
- Simonson's

The Roundup

111 West Main • Sidney, MT
406-433-3306 • 1-800-749-3306

Big Sky
Concert
Season
Kicks Off
Sept. 18
with
“Raised in
the Saddle”



The first performance of the Big Sky Concert Season kicks off on Monday, September 18th with Montana Repertory Theatre’s presentation of “Raised in the Saddle” The Phantasmagorical Journey of a Future Rodeo Queen by Jay Ketterling. This comedy rolls across the Big Sky state via steam locomotive, following teenage cowgirl Alice Greenough as she encounters a who’s-who list of famous Montanans such as Charlie Russell, Jeannette Rankin, Cooper King William Clark and others . Alice will need that ‘iron will’ she’s known for, because this train ride will prove every bit as exciting and challenging as sticking to the 1,200 pounds of buckin’, snortin’, and kickin’ muscle that’s waiting to greet her at her first rodeo competition! Playwright Jay Ketterling earned his BA in English/creative writing at the University of Montana in 1982 and is currently a working writer living in Missoula. “Raised in the Saddle” is his

latest commissioned play for the Montana Repertory Theatre’s Educational Outreach. Montana Repertory Theatre’s mission is to tell the great stories of our world to enlighten, develop, and celebrate the human spirit in an ever-expanding community. This captivating performance will be held at the MonDak Heritage Center at 7:00 p.m. Season tickets can be purchased at the door: adults \$45, senior \$40, and students \$35. Individual tickets can also be purchased at the door. For additional concert information contact Candy Markwald 406-488-4155, Jill Hill 406-489-4304, or Leann Pelvit at 406-433-3500. The Big Sky Series is made possible in part by the Montana Performing Arts Consortium Presenter Development Program which is supported by grants from the National Endowment for the Arts, Montana Arts Council, and a legislative grant from Montana’s Cultural Trust.

The MonDak
Heritage
Center
Announces
Oktoberfest
Featuring Twin
Kennedy



Twin Kennedy



The MonDak Heritage Center and Northeastern Arts Network present Oktoberfest on Friday, October 6 at 7:00 p.m. at the MonDak, 120 3rd Ave SE, Sidney! Doors open at 6:30 p.m. Featuring live music by the country duo Twin Kennedy, a wide selection of seasonal beers, German brats, and other refreshments. Comprised of West Coast sisters Carli and Julie Kennedy, Twin Kennedy started making music together before they could talk. With Carli on vocals and guitar, and Julie on vocals and violin, these powerhouses will fill your soul with joy and warmth through their seamless harmonies and heartfelt songwriting. No bond compares to that of sisters, and the

same is to be said about the blend of their kindred voices, making every performance nothing short of awesome. Tickets are \$55/person or \$45 for MDHC Members. Must be 21 or older to attend. Proceeds support MDHC and NAN programs, exhibits, and collections preservation. To purchase tickets, stop by the MonDak Heritage Center or call (406) 433-3500. Or order tickets online at mondakheritagecenter.org. Sponsored by Blue Rock Distributing, Edward Jones Financial Advisors (Enid K. Huotari, Jerry E. Hughes, Nick Lonski, & Lauren Sukut), Fink Dental Center, Fulkerson-Stevenson Funeral Home, Redneck Meats, Reynold’s Market, Seitz Insurance, and Tri-County Implement!

MNAXLP

\$5 INSTANT SAVINGS
ON GALLON-SIZED CONTAINERS
All prices after instant savings.
See store for details.

INTEGRITY
MEDALLION

Starting At \$27⁹⁹	Starting At \$24⁹⁹	Starting At \$16⁹⁹	Starting At \$33⁹⁹	Starting At \$28⁹⁹
Integrity Exterior Flat House Paint	Integrity Interior Flat Wall Paint	Integrity Interior Flat Ceiling Paint	Medallion Exterior Flat House Paint	Medallion Interior Flat Wall Paint

\$7 INSTANT SAVINGS
ON GALLON-SIZED CONTAINERS
All prices after instant savings. See store for details.

Starting At \$39⁹⁹
Pristine Exterior Flat House Paint



Starting At \$35⁹⁹
Pristine Interior Matte Wall Paint



\$13⁹⁹ Before Mail-In Rebate
- \$4⁰⁰ Mail-In Rebate
\$9⁹⁹ After Mail-In Rebate
Bulls Eye 1-2-3 Primer Sealer



\$1⁹⁹
Premium Enamel Aerosol Spray Paint
• Formulated for indoor or outdoor use
• Fast drying & ideal for wood, metal & crafts
• Available in 27 colors 789793



SAVE 47%

\$3⁹⁹
Chalky Finish Spray Paint
• Creates an ultra matte, non-reflective finish with slight texture
• 12oz 771269
Other colors available.



JOHNSON SALE ENDS 9-23-17
HARDWARE & FURNITURE since 1915
www.johnsonhardwareandfurniture.com
Monday-Friday: 8am - 5:30pm • Saturday: 8am - 4pm
111 S. Central • Sidney, MT | 406-433-1402

Diana Youngquist
Independent Skin Care Consultant

JAFRA
THE POWER TO TRANSFORM LIVES

34609 Highway 200
Home: 406-798-7754 Cell: 406-489-3368
diayoung@outlook.com
Independent Consultant

Adult Education Classes for Fall 2017
Please call Sidney High School at 433-2330
for more information or check our website at
sidney.k12.mt.us, Resources/Adult Ed

Monday
Latin Dance, Instructor-Kristin Norgaard, 480-2746, 5:15-6:15 pm, \$20.00 (see Wednesday info)

Strength and Conditioning, Instructor-Kira Pewonka, 480-5308, \$20.00 (Wednesdays, also)
Beginning Sept. 18, 6:15 pm, SHS Commons
Strength and conditioning class open to all levels! The class will consist of using functional movements, constantly varied, at a high intensity. Designed to build endurance and strength to use in all aspects of everyday life. A class full of energy and positive reinforcement, to help each individual feel their strongest and have fun while doing it!

Beginning Sewing Class, Instructor-Sara McMillan, (347) 807-8187, \$20.00
Beginning Sept. 18, 6:00 pm, SHS Family Consumer Science, Rm. 104
Learn to use your own machine and make a few basic beginner projects such as an apron, table runner, baby blanket and simple tote bag.

Tuesday
Beading Class, Instructor Dianne Etzel, 488-6487, \$20.00
Beginning Oct. 3 from 6:00-9:00, SHS Commons.
This class is for people interested in learning many types of beading techniques. Create unique jewelry that you can keep for yourself or give to friends and family as gifts.

ESL (English as a Second Language), Instructor-Bee Morales, \$20.00
Beginning Oct. 12, 6:00-7:30 pm, Location-Sidney Middle School, Rm. 123
(See Thursday info)

Beginning Quilting, Instructor-Nancy Van Hook, 482-3366, \$20.00 plus materials
Beginning Sept. 19, 5:30 pm, Location-Quilts and More
Sewing machine, sewing supplies and cutting tools are needed.

Snowman Gathering Wool Applique, Instructor-Kelly Markle, 482-3366, \$20.00 plus materials
Beginning Oct. 3, 5:30 pm, Location-Quilts and More
Learn techniques, tips and tricks in working with wool.

Wednesday
Men’s Volleyball, instructor-Dennis Marker, \$20.00
Beginning Sept. 20, 7:00-9:00 pm, West Side School Gym
Still one of the most popular adult education classes offered. Come and find out why.

Women’s Volleyball, instructor-Amber Beyer, \$20.00
Beginning Sept. 20, 7:00-8:30 pm, SHS Gym
Popular class for women. Knee pads are recommended. All skill levels welcome.

Variety Sewing, Instructor-Pam Taylor, 482-3366, \$20.00 plus materials
Beginning Sept. 20, 10:00 am, Quilts and More
Create three different projects. You’re never too old to learn new techniques!

Beginning Sewing Class, Instructor-Sara McMillan, (347) 807-8187, \$20.00
Beginning Sept. 20, 6:00 pm, SHS Family Consumer Science, Rm. 104
Learn to use your own machine for quilting. We will make an American flag from start to finish.

Latin Dance, Instructor-Kristin Norgaard, 480-2746, \$20.00
Beginning Sept. 20, 5:15 pm (Mondays, also), Location-SHS Commons
Join this fun and effective aerobic workout. Learn fitness steps with Latin-inspired music. You will burn calories and tone up while having fun!

Strength and Conditioning, Instructor-Kira Pewonka, 480-5308, \$20.00
Beginning Sept. 18, 6:15 pm, SHS Commons

Thursday
ESL (English as a Second Language), Instructor-Bee Morales, \$20.00
Beginning Oct. 12, 6:00-7:30 pm, Location-Sidney Middle School, Rm. 123
Do you want to improve your English speaking and listening skills? ESL classes are designed for those whose native language is not English. These classes will emphasize practical English for daily life and employment situations. *¿Quieres aprender a hablar y escuchar mejor el inglés? Estas clases son diseñadas para aquellos quienes idioma nativo no es el inglés. Estas clases pondrán énfasis en inglés práctico para la vida diaria e igualmente para situaciones de empleo.*

Saturday
Laura Heine Collage Applique, Instructor-Nancy Van Hook, 482-3366, \$20.00 plus materials
Beginning Sept. 20 (three Saturdays), 10:00 am, Quilts and More
Bring your own collage kit or plan to purchase one.

The adult education program is looking for teachers who would like to work in the program. If you are interested in teaching, please call Sidney High School.

Jamison Whiteman All Day Benefit Scheduled For Sept. 23

To start off the day, enjoy breakfast at the Sidney Elks Club in Sidney at 8 a.m. with proceeds going to the Jamison Whiteman fund. At 11 a.m. join in the fun at the Wanna Be An Elk golf scramble at the Sidney Country Club. To end the day, there will be a free will offering pig roast and silent auction Sat., Sept. 23 at 6 p.m. at the Elks Club, 123 3rd St. SW in Sidney to benefit Jamison Whiteman, son of Jamie and Leslie Whiteman of Sidney.

Jamison Whiteman is the cutest 8 year old boy you will ever meet with the biggest smile around. Jamison has had a long road of surgeries, treatments, tests, doctors, etc. When Jamison was born 3 months early, he was diagnosed with a severe type of cerebral palsy, asperger syndrome & a vision impairment, all leaving him wheelchair bound and in pain.

At 3 months old, he was life flighted to Billings, MT where he underwent his first surgery in what will have been 27 plus in his life so far with many more in his future. Jamison has had top CP treatments/surgeries all to no avail.

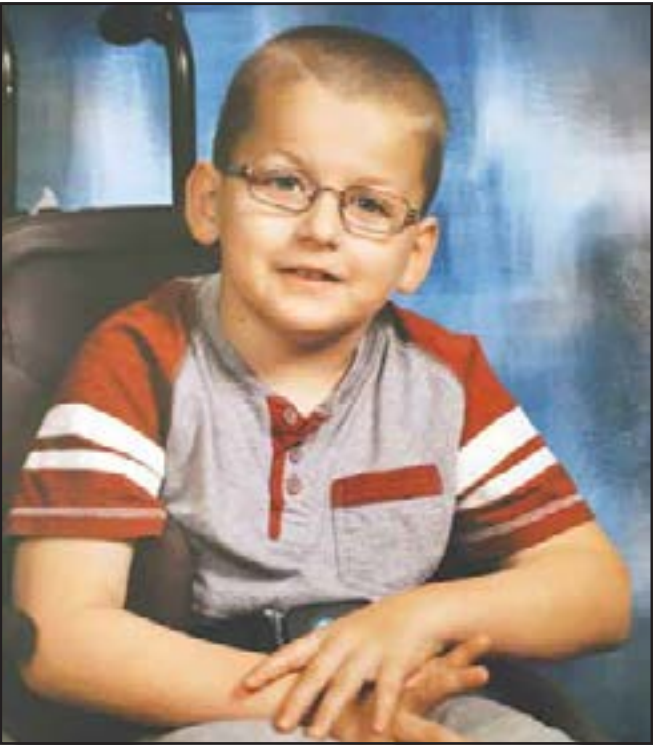
Jamison had a pain pump inserted in his belly that led into

his spine which his body rejected, causing many surgeries to drain huge infection abcesses in his back, a shunt put in his head then removed due to infection with many surgeries in between again, a stomach infection which caused some of his intestines to be removed, a selective dorsal rhizotomy (soldering of nerve roots in spinal cord to help with pain and loosening of muscles) which caused an entire body infection that almost killed him, just to name a few.

Jamison now weighs 83 lbs. His parents have little to no adaptive equipment or nursing care to help in the caring for their son. There is no sign of him walking and he will be facing many more surgeries and hardships in his future.

If you have a donation that you would like to contribute, call Kathy Nicholson at 406-480-9032. Please include a business card and or a brochure to be displayed with the donations. Financial donations can be made to the Jamison Whiteman benefit account at Stockman Bank.

For more information about the benefit call Ryan Laqua at 406-480-9052 or email rlaqua@midrivers.com.



Eight year old Jamison Whiteman of Sidney.



WillistonAuto.com

OVER 415 NEW & USED VEHICLES IN-STOCK!

SEPTEMBER SAVINGS EVENT

#28885

2017 GMC SIERRA 1500 DENALI CREW CAB SHORT BOX 4WD
\$8,355 | \$4,500 Bonus Cash*
BELOW MSRP | \$3,855 Price Reduction
SALE PRICE **\$53,455**
Based on MSRP of \$61,810. Stk# G8216. Tax, title, license and \$99.50 doc fee extra. Expires 10/02/17
* Not available with special finance or lease offers.

2017 GMC SIERRA 1500 DENALI CREW CAB SHORT BOX 4WD
\$8,456 | \$4,500 Bonus Cash*
BELOW MSRP | \$3,956 Price Reduction
SALE PRICE **\$54,479**
Based on MSRP of \$62,935. Stk# G8304. Tax, title, license and \$99.50 doc fee extra. Expires 10/02/17
* Not available with special finance or lease offers.

2017 GMC SIERRA 1500 SLT CREW CAB 4WD PREMIUM PKG.
\$9,199 | \$5,500 Bonus Cash*
BELOW MSRP | \$3,699 Price Reduction
SALE PRICE **\$48,766**
Based on MSRP of \$57,965. Stk# G8145. Tax, title, license and \$99.50 doc fee extra. Expires 10/02/17
* Not available with special finance or lease offers.

2017 GMC SIERRA 1500 DENALI CREW CAB SHORT BOX 4WD
\$8,130 | \$4,500 Bonus Cash*
BELOW MSRP | \$3,630 Price Reduction
SALE PRICE **\$51,185**
Based on MSRP of \$59,315. Stk# G8351. Tax, title, license and \$99.50 doc fee extra. Expires 10/02/17
* Not available with special finance or lease offers.

2017 GMC SIERRA 2500 SLT CREW CAB 4WD STANDARD BOX
\$5,935 | \$2,250 GMF Cash *
BELOW MSRP | \$3,685 Price Reduction
SALE PRICE **\$50,045**
Based on MSRP of \$55,980. Stk# G7973. Tax, title, license and \$99.50 doc fee extra. Expires 10/02/17
* When you finance thru GMF with delivery by 10/02/17.

2017 GMC SIERRA 1500 DENALI CREW CAB 4WD SHORT BOX
\$8,265 | \$4,500 Bonus Cash*
BELOW MSRP | \$3,765 Price Reduction
SALE PRICE **\$52,550**
Based on MSRP of \$60,815. Stk# G8241. Tax, title, license and \$99.50 doc fee extra. Expires 10/02/17
* Not available with special finance or lease offers.

OVER 75 PRE-OWNED VEHICLES ON SALE NOW!

2017 Jeep Patriot Sport Stk# U8166A, 13,110 Miles..... \$19,995	2016 GMC Sierra 2500HD Denali Stk# U8571A, 43,817 Miles..... \$58,995	2015 Chevy Silverado 2500HD High Country Stk# G8248A, 61,694 Miles..... \$53,995	2014 RAM 2500 Laramie Stk# G7968A, 69,318 Miles..... \$38,995
2017 Jeep Patriot Sport Stk# U8167A, 11,107 Miles..... \$19,995	2016 Chevrolet Silverado 1500 LT Stk# U8596A, 9,175 Miles..... \$39,995	2015 Jeep Grand Cherokee Limited Stk# G8201B, 37,688 Miles..... \$34,995	2014 Chevrolet Silverado 1500 LTZ Stk# C5876A, 20,525 Miles..... \$37,995
2017 Chevrolet Silverado 1500 LT Stk# U8611A, 2,616 Miles..... \$40,995	2016 Ford F-250 Stk# U8565A, 48,459 Miles..... \$47,995	2015 GMC Yukon SLE Stk# B8147A, 28,000 Miles..... \$40,995	2014 Chevrolet Silverado 1500 LTZ Stk# U8563A, 100,025 Miles..... \$33,995
2017 Chevrolet Corvette Grand Sport Stk# B8193B, 519 Miles..... \$72,995	2016 Ford F-150 Stk# G8475A, 33,407 Miles..... \$40,995	2015 Chevrolet Silverado 1500 High Country Stk# C8565A, 50,700 Miles..... \$39,995	2014 Ford F-150 Stk# U8564A, 52,325 Miles..... \$35,995
2016 Chevrolet Impala Limited LT Stk# U7697A, 26,854 Miles..... \$18,995	2016 Dodge Challenger SRT Hellcat Stk# C8617A, 5,760 Miles..... \$55,995	2015 Chevrolet Tahoe LTZ Stk# C8631A, 7,496 Miles..... \$54,995	2014 Ford Mustang GT Stk# C7761B, 75,385 Miles..... \$21,995
2016 Chevrolet Tahoe LTZ Stk# U8220A, 33,841 Miles..... \$54,995	2016 RAM 2500 Laramie Stk# C8619A, 9,202 Miles..... \$50,995	2015 Chevrolet Silverado 1500 LTZ Stk# C7877A, 28,026 Miles..... \$40,995	2014 Ford F-150 Stk# C8600B, 89,826 Miles..... \$32,995
2016 Dodge Grand Caravan R/T Stk# U8223A, 30,983 Miles..... \$21,995	2015 Toyota Tundra Stk# C8109A, 39,032 Miles..... \$38,995	2015 Chevrolet Tahoe LT Stk# C8416A, 70,002 Miles..... \$38,995	2014 Toyota Tundra Stk# C8297A, 55,052 Miles..... \$32,995
2016 Cadillac Escalade Luxury Collection Stk# G8240A, 27,868 Miles..... \$65,995	2015 GMC Yukon Denali Stk# G8194A, 16,011 Miles..... \$57,995	2015 GMC Acadia Denali Stk# B8197A, 19,423 Miles..... \$35,995	2014 RAM 2500 Laramie Stk# U8547B, 56,000 Miles..... \$46,995
2016 Chevrolet Silverado 3500HD LTZ Stk# U8315A, 9,672 Miles..... \$60,995	2015 Chevrolet Cruze 2LT Auto Stk# U8345A, 45,595 Miles..... \$14,995	2014 Chevrolet Corvette Stingray Stk# C7551A, 5,185 Miles..... \$53,995	2014 GMC Sierra 1500 SLT Stk# U8642A, Miles..... \$29,995
2016 Toyota 4Runner Stk# G8226B, 13,507 Miles..... \$40,995	2015 INFINITI QX80 Stk# K8189B, 21,075 Miles..... \$57,995	2014 Chevrolet Silverado 1500 LTZ Stk# C7660A, 20,896 Miles..... \$39,995	2013 Cadillac CTS Premium Stk# C7747A, 49,133 Miles..... \$24,995
2016 GMC Sierra 1500 SLT Stk# U8400A, 19,845 Miles..... \$47,995	2015 GMC Sierra 3500HD Denali Stk# U8398A, 45,851 Miles..... \$56,995	2014 Cadillac Escalade Platinum Stk# U8273B, 48,313 Miles..... \$45,995	2013 GMC Yukon XL 1500 Denali Stk# C8173A, 82,026 Miles..... \$34,995
2016 GMC Sierra 1500 Denali Stk# U8428A, 8,380 Miles..... \$62,995	2015 Chevrolet Silverado 2500HD LTZ Stk# C8149A, 96,822 Miles..... \$32,995	2014 Chevrolet Impala LT w/2LT Stk# G8237B, 56,879 Miles..... \$16,995	2013 Chevrolet Silverado 1500 LTZ Stk# B7811A, 83,475 Miles..... \$30,995

WillistonAuto.com

Pictures for illustration only. Vehicles subject to prior sale due to advance advertising deadlines. Offers good thru October 2 2017. Tax, title, license and \$99.50 doc fee extra.

MonDak Animal Rescue Construction Project Is Back On Track

Construction on Williston's new \$5 million animal shelter is back on track. Officials with MonDak Animal Rescue (MDAR) have hired a new company to manage the remainder of the project. Edman Builders, LLC, a Williston-based firm, anticipates the Buck Scheele Family Animal Center will be ready to open in the spring of 2018.

"We are trying to wrap up the shell before the weather turns south," said Joseph Edman, president of Edman Builders, LLC.

The 18,000 square foot building is located in northeast Williston near Spring Lake Park and the Frontier Museum. The facility will mainly serve as a place for stray, lost, abandoned or surrendered animals (mostly dogs and cats) to stay until they are adopted. Under the MDAR's current system, foster families care for displaced or sick animals until they are rehomed. The group has one paid staff member to oversee the process.

Lisa Patton, MDAR board member said the pet community is still suffering adverse effects from the downtown in oil and gas activity.

"We took in 400 animals that were rescued and rehomed in the last calendar year," said Patton, "We are still seeing a lot of animals left behind; we are finding them in vacant apartments and empty homes and not all of them are healthy when they come to us."

The Buck Scheele Family Animal Center will provide ample space for rescues and adoptions as well as pet boarding, dog day care, grooming and shelter veterinary services. The multiuse facility was made possible through a generous gift from Lois Scheele. The longtime Williston resident donated \$5 million in remembrance of her husband, the late Buck Scheele. A sign recognizing the Scheele family's philanthropy will be placed on the exterior of the building.

"It is inspiring to have a family kind enough to play such a large role in this project," said Edman.

In addition to the Scheele donation, the City of Williston STAR Fund, Williston Parks and Recreation District and Frontier Museum have all contributed to the project. Edman hopes to have a construction open house yet this year to showcase the building's contemporary design and features.

Meanwhile, the MDAR Dog Jog is scheduled Sept. 16 at Spring Lake Park from 10 a.m.-2 p.m. There will be a walk, silent and live auctions and other activities throughout the event. All of the proceeds will benefit operational costs for MonDak Animal Rescue.

For more information call 701-577-7387 or email mon-dakanimalrescue@gmail.com



Lisa Patton, MDAR board member and Joseph Edman, president of Edman Builders, LLC, are anxious to get construction completed at the new Buck Scheele Family Animal Center in Williston. (Williston Economic Development)

Energy Roundup

Oasis Petroleum Hosts Bike Giveaway During Alexander's Old Settler's Day

48 Bikes In Total Donated By Various Businesses



Mike Haase from Oasis Petroleum helps Gunnar Forbes and his mom Kaila from Sidney during the bike giveaway.



The Oasis Petroleum crew lines up before the Alexander Old Settler's parade.

Oasis Petroleum Inc, an independent exploration and production company, focuses on the acquisition and development of unconventional oil and natural gas resources in the North Dakota and Montana regions of the Williston Basin. Oasis Petroleum was founded in 2007 and is headquartered in Houston, Texas. Local offices are located in Alexander, Watford City, Williston and Powers Lake. Alexander office employees are : Superintendent-Conrad Ellis, Foreman: Mike Haase, Pete Transtrom and Dave Couture. Administrative Assistant: Carla Stomley.

Oasis Petroleum has been an Old Settlers Parade participant for several years but this year Conrad Ellis wanted to do something different! When he went to town to purchase candy to give away he thought it would be fun to give away a couple bikes and helmets as well....he had them in his office and a vendor came in and said he would like to donate a couple too, well that got Conrad thinking maybe other vendors would like to donate so he started calling others, throughout the week prior to the picnic there were at total of 48 bikes and helmets dropped off at the Alexander Oasis office!

Participating sponsors include: Oasis Petroleum, Wolla Trucking, Secure Energy, JMAC/Indian Hills Disposal, Jerry's Weed Control, Astro Chem, Busy Bee's Hot Oil, Gibson/Wisco, JNS Trucking, Alpha Roust About, Distribution NOW, Nuverra/Power Fuels, Double EE, T&R Transport, E & M SERVICES, LTR, MBI, APEX Remington, Schlumberger Production Technology, RockWater, Shores Lift Solutions and Grainger.



Madison Winne of Watford City rides away on her new bike.

Roundup

WEB.COM

MOBILE FRIENDLY

Lunch Menus!

Sidney School
Thurs., Sept. 14: Hot ham and cheese, cheesy potatoes, fresh fruit.
Fri., Sept. 15: Pizza, tossed salad, pineapple tidbits.
Mon., Sept. 18: BBQ pork riblet, oven wedges, peaches.
Tues., Sept. 19: Chicken nuggets, potatoes and gravy, vegetable normandy, apricots, dinner roll.
Wed., Sept. 20: Soft shell taco, mandarin oranges, gelatin.
Savage School
Thurs., Sept. 14: Croissants.
Fri., Sept. 15: Hot dogs.
Mon., Sept. 18: Macaroni hot dish.
Tues., Sept. 19: Chicken a la king.
Wed., Sept. 20: Spaghetti wiener casserole.
Rau School
Thurs., Sept. 14: Pizza, salad, mandarin oranges, brownie.
Fri., Sept. 15: Cheeseburger soup, strawberries, fresh veggies, breadstick.
Mon., Sept. 18: Chicken strips, fries, corn, mixed fruit, monster cookie.
Tues., Sept. 19: Spaghetti, green beans, pears, garlic bread.
Wed., Sept. 20: Chicken and rice casserole, carrots, applesauce, breadsticks.
Froid School
Thurs., Sept. 14: Super nachos, taco bar, lettuce mix, fruit, milk.
Fri., Sept. 15: Chicken patty on a bun, rice pilaf, peas, fruit, milk.
Mon., Sept. 18: Fish sticks, macaroni and cheese, veggies, fruit, milk.
Tues., Sept. 19: Goulash, corn, buns, fruit, milk.
Wed., Sept. 20: Chicken legs, scalloped potatoes, peas, dessert, fruit, milk.
Bainville School
Thurs., Sept. 14: Beef stroganoff, noodles, peas, apples.
Fri., Sept. 15: Corn dog, gems, broccoli, mandarin oranges.
Mon., Sept. 18: Italian dunkers, carrots, fruit.
Tues., Sept. 19: Chicken broccoli cheddar bake, apples.
Wed., Sept. 20: Slush burgers, tater tots, pears.
Richey School
Thurs., Sept. 14: Tacos, fresh veggies, mandarin oranges, milk.
Fri., Sept. 15: Chicken alfredo, garlic toast, corn, fruit cocktail, milk.
Mon., Sept. 18: Fish burger, fries, green beans, applesauce, milk.
Tues., Sept. 19: Biscuits and gravy, scrambled eggs, grapes,

hash browns, milk.
Wed., Sept. 20: Weiner wraps, baked beans, pears, milk.
Culbertson School
Thurs., Sept. 14: Bacon cheeseburgers, french fries, fruit, milk.
Fri., Sept. 15: Chicken nuggets, smiley potatoes, fruit, milk.
Mon., Sept. 18: Pizza, salad, fruit, milk.
Tues., Sept. 19: Tacos, spanish rice, fruit, milk.
Wed., Sept. 20: Homemade chili, cinnamon rolls, fruit, milk.
Lambert School
Thurs., Sept. 14: Chicken fried steak, mashed potatoes, gravy, peas, fruit, milk.
Fri., Sept. 15: Lasagna, corn, garlic bread, fruit, milk.
Mon., Sept. 18: Fish sandwich, tater tots, fruit salad, carrots, milk.
Tues., Sept. 19: Chicken, mashed potatoes, gravy, buns, green beans, fruit, milk.
Wed., Sept. 20: Baked potato bar, fruit, milk.
Fairview School
Thurs., Sept. 14: Chicken alfredo, green beans, tropical fruit, milk.
Fri., Sept. 15: Corn dogs, carrot sticks, apples, dessert, milk.
Mon., Sept. 18: Chicken burgers, chips, strawberry cups, milk.
Tues., Sept. 19: Quesadillas, refried beans, pears, milk.
Wed., Sept. 20: Taco in a bag (meat, cheese, lettuce), apples, milk.
Watford City School
Thurs., Sept. 14: Pasta with meaty marinara sauce, garlic toast, mixed veggies, peaches or grapes.
Fri., Sept. 15: Crisпитos, tater rounds, corn, jello with fruit, fresh fruit.
Mon., Sept. 18: Belgian waffle with fruit toppings and whipped cream, syrup, sausage links, hash brown patty, fresh fruit.
Tues., Sept. 19: Hot ham and melted cheese on a croissant, baked lays, veggies with dip, sliced apples.
Wed., Sept. 20: Chicken tenders, mashed potatoes with gravy, steamed carrots, corn bread, fruit.
Alexander School
Thurs., Sept. 14: Teriyaki chicken, fried rice, egg roll.
Fri., Sept. 15: Super nachos.
Mon., Sept. 18: Chicken strips or finger steaks, mashed potatoes, green beans, bread.
Tues., Sept. 19: Tater tot hotdish, corn, homemade buns.
Wed., Sept. 20: Build your own pizza.

E

M

SERVICES LLC

Main Office: 701-842-6309 • Fax: 701-842-6319

305 12th Street SE, Watford City, ND

3001 Red River Drive, Sidney, MT

5060 Bennett Industrial Dr. Williston, ND

2522 132nd C Ave NW Arnegard, ND

www.emservicesus.com

We Are Your Oilfield Supply Headquarters!

Richland Pump & Supply

Down Hole Sucker Rod Pumps

Tubing Anchors • Gates

Hydraulic Hoses & Belts

Balon Ball Valves • Line Pipe • Tubing

Fittings • Norris Sucker Rods

Stanley, ND

701-628-8706

Sidney, MT

406-488-8706 • rpands@midrivers.com

Count on *Tractor & Equipment Co. and T&E The Cat Rental Store*, for all your equipment buying and rental needs. From concrete saws to heavy construction equipment, we offer products from Cat® and other leading brands to meet most jobsite needs.

Lindsay Smith

406-696-0714

T & E

CAT Rental Store

Customer Service is Our #1 Priority

BORDER

STEEL AND RECYCLING, INC.

Construction Materials • New Steel • Aluminum & Stainless

Brady Smelser • Tim Mulholland • Kelly Moody • Bret Smelser • Ernie Gawryluk • Ken Syme

Sidney

35002 CR 123

406-433-7737

1-855-810-2995

Glendive

2703 W. Towne St.

1-800-423-5219

Williston

13896 W. Front St.

1-800-820-5493

Plentywood

Hwy 16 East

406-765-2624

HURLEY'S

OILFIELD SERVICES

• Porta Potties • Potable Water

• Sewer Systems • Loaders

• Communications • Backhoe

• Trucking • Skid Houses

Dispatch: 701-844-1234 | Fairview, MT

SPACE FOR YOUR FAMILY!



The New “Ward”

28' x 68', 4 bedroom, 2 bathroom, lots of living space

\$113,495

plus setup & tax where applicable

Iseman Homes

YOU'RE HOME, NOW.

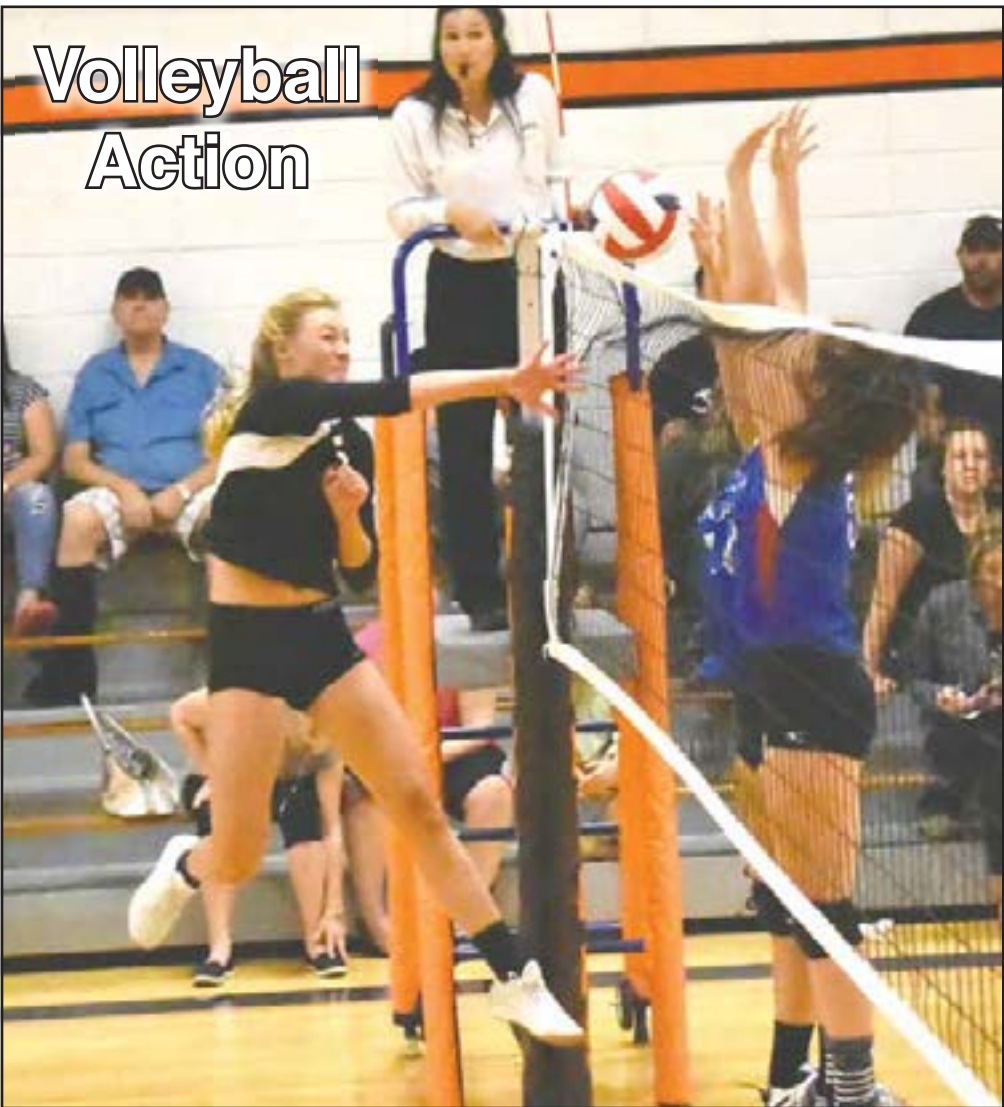
Mon: 9am - 7pm • Tues-Thurs: 9am - 6pm

Fri: 9am - 5:30pm • Sat: 9am - 4pm

2308 West Front St. Williston, ND | 701-572-2590

FREE DELIVERY WITHIN 100 MILE RADIUS!





Volleyball Action

In For the Kill

Savage’s Soda Rice spikes the ball against Richey/Lambert during a home match Sept.7. The Warriors beat the Fusion 3 games to 0 (25-5, 25-15, 25-11). Savage also bested Bainville 3 games to 0 at home on Sept. 5 (25-20, 25-17, 25-20).

Alexander Volleyball Scores

Alexander Comets VS. Trenton (in Trenton) Sept. 7
Alexander 3 Trenton 1 (25-21, 25-18, 10-25, 25-22)
Please send other team scores to info@roundupweb.com for publication.



New Kiwanis Members

The Sidney Kiwanis Club recently welcomed new members Monte Silk, Sidney superintendent of schools, left; and Tom Halvorsen, Richland County deputy attorney.

THINK SAFETY

Harvest Has Begun!

We urge everyone to “think safety” during the annual sugarbeet harvest. Please be mindful of the added truck traffic on the roads.

Best Wishes For A Great Harvest!



Sidney Sugars

INCORPORATED

Sidney, Montana | 406-433-3309



We want to say thank you!

Join us as we celebrate and give back to the community that has supported us for 35 years.

Grand Opening September 19-21, 2017

106 8th Ave SE, Watford City (Hwy 85 across from Heggen Equipment)





CORNERSTONE BANK

106 8th Ave SE | PO Box 1410 | Watford City, ND 58854-1410

Member FDIC

www.cornerstonebanks.net



- Daily - September 19-21**
- Stop in for a tour and refreshments.
 - Bring in your loose change to our coin counter and donate it to the Electrocardiogram (ECG) in the Cardiac Care Unit at the new hospital. Cornerstone Bank will match up to \$500 in donations.
- Tuesday, September 19: Wellness Day**
- Come and see local healthcare providers at the bank and learn about their services.
 - 10:00 a.m. Flag Raising Ceremony with Lt. Governor Brent Sanford. Social to follow.
 - 5:30 p.m. 5K Walk/Run departing from Kent Pelton Nature Park. \$25* registration fee with proceeds going to the ECG at the new hospital. Visit www.runreg.com/cornerstone or call 701-444-6411. Pre-registrants will receive shirts while supplies last. *\$2.90 fee added when registering online.
- Wednesday, September 20: BBQ & Bonus Bucks**
- 11:00 a.m. – 1:00 p.m. BBQ lunch served.
 - Check out our new drive-up ATM. There just might be a surprise!
- Thursday, September 21: National Gratitude Day**
- Hear music from local youth musicians.
 - Look around town for Random Acts of Kindness courtesy of Cornerstone Bank.