

The Roundup

Phone (406) 433-3306
Fax (406) 433-4114
E-mail address:
info@roundupweb.com
www.roundupweb.com

Business Office:
Located at 111 West Main
Sidney, MT

Mailing Address:
P.O. Box 1207
Sidney, MT 59270

PRSRRT STD
U.S.
POSTAGE
PAID
The Roundup

ECRWSS
Postal Customer

Wednesday, November 8, 2017

Volume 43 • Number 39

Pulse Crop Update Part Of Ag Summit Program

Brian Gion, Marketing Director for the Northern Pulse Growers Association, is the featured luncheon speaker at the MonDak Ag Research Summit set for Wednesday, Nov. 15, at the Richland County Event Center (on the fairground) in Sidney. Gion will be giving an update on the 2017 pulse crop, including yield, quality and markets, as well as covering what “the upcoming 2018 crop year might look like.”

Gion joins scientists from the MonDak area’s three ag research centers who will be providing their own updates to producers on research relevant to their operations. In addition to the various presentations, researchers from the MSU Eastern Ag Research Center in Sidney, the NDSU Williston Research Extension Center in Williston, and the USDA Agricultural Research Service facility in Sidney are also participating in afternoon small group listening sessions on various topics. They are particularly interested in hearing what farmers and ranchers are seeing in

their operations and what production issues they think need to be addressed.

The day’s events begin at 9 am MT and run to 3 pm. Topics covered for the day include presentations on crop disease research and research into invasive weeds, wheat stem sawfly, dryland and irrigated cropping systems, as well as a crops variety discussion panel and additional talks on high tunnel vegetable production and grasshopper outbreak prediction. More than two dozen posters outlining additional research from the three labs will also be on display, with the researchers available to answer questions during scheduled poster sessions.

The event is free, but participants are encouraged to preregister to get a head count for lunch. The preregistration deadline has also been extended to Friday, Nov. 10. As an additional incentive, those preregistering are eligible to win a

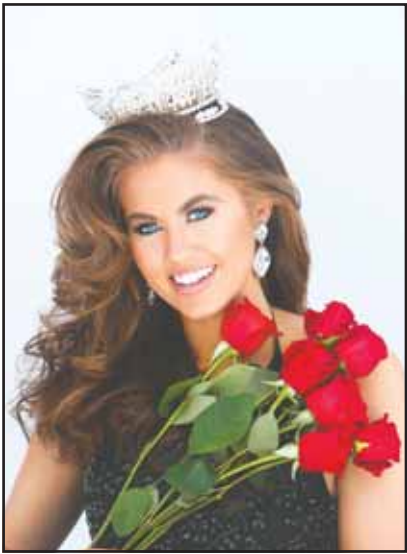
set of collectible model tractors from T&E of Williston, and the first 50 registering will also receive a weatherproof cell phone pouch and water bottle.

To preregister on-line go to <https://tinyurl.com/y9b218xs>. To register by phone or if you have questions, call Beth Redlin at 406-433-2020. For pesticide applicators and agronomists, those attending the Ag Research Summit are eligible for 2 private and 2 commercial MT pesticide applicator points and 2 Certified Crop Advisor CEU’s.

Sponsors for this event include: the Northern Pulse Growers Association, T&E of Williston, the City of Williston-Economic Development, NDSU Extension Service, Agri-Industries of Sidney, Tri-County Implement, Inc. of Sidney, Cross Petroleum Service of Sidney, Glendive and Billings and Dawson County Implement of Glendive.

Homecoming Celebration for Miss America Held in Williston

Miss America 2018 Cara Mund, formerly Miss North Dakota 2017, was honored at a Homecoming Celebration in Williston ND on Friday, Nov. 3 and in Bismarck ND on Saturday, Nov. 4. She is the first Miss North Dakota to be crowned Miss America in the 70 year history of the Miss ND Organization. In Williston, the Sidney High School Band, under the direction of Kylie Sundt entertained the crowd.



Miss America 2018 Cara Mund (Photo by Matt Boyd Photography)

Several hundred people attended the celebrations, which included greetings from ND Lt. Governor Brent Sanford, Williston Mayor Howard Klug, Mandan Mayor Tim Helbling and Bismarck City Commissioner Josh Askvig, ND Senators John Hoeven and Heidi Heitkamp and Congressman Kevin Cramer. Several titleholders from other states were in attendance to pay tribute to Cara as well as were more than 20 “Forever” Miss North Dakotas. While at the Williston event, Cara officially crowned the new Miss North Dakota 2017 Lizzie Jensen. Representatives of the Miss America Organization, headquartered in Atlantic City, NJ, were also in attendance.

For more information on the Miss America 2018 Cara Mund, go to missamerica.org

Trash Pickup in Sidney

The City of Sidney will be collecting trash on Thursday, Nov. 9 for those whose normal collection day is Friday, Nov. 10 due to the Veterans Day holiday. Please have roll out cans curbside by 7 a.m on Thursday. Any questions call 406-480-1530.

Design Your Succession Plan Workshop Offered in Watford City

By Marcia Hellandsaas

NDSU Extension Agent, McKenzie County

“Design Your Succession Plan” is a workshop specially written to help farm and ranch families get started on their succession plan.

This interactive series will be held on November 28, 30 and December 7 at the NDSU Extension Service/McKenzie County Office at 205 6th Street NW in Watford City. Classes will start at 1:30 pm CT and conclude by 4:30 pm CT. Participants are encouraged to attend all sessions.

Class participants will receive a workbook to help them prepare a vision for the future of their operation. They will also receive tools to help them improve communications with family. Choosing and working with professionals such as attorneys, accountants, lenders, insurance agents and tax experts during the succession planning process will also be included.

“This program will help you shape the legacy of your family farm or ranch business and save hundreds of dollars by completing crucial planning steps before visiting with professionals,” said Marcia Hellandsaas, NDSU Extension Agent in McKenzie County.

Please contact the NDSU Extension Service in McKenzie County at 701-444-3451 to receive more information or email marcia.hellandsaas@ndsu.edu. You may also go to <https://www.ag.ndsu.edu/succession>. Registrations are taken at the NDSU Extension Service Office in McKenzie County.

Steinbeisser Receives Distinguished Service Award

Don Steinbeisser of Sidney recently received the Distinguished Service Award from the Montana Water Resources Association (MWRA) and its counterparts in North Dakota, South Dakota and Wyoming citing his lifelong dedication and concern for agriculture and water users throughout Montana, and for his effort and participation as a director of the MWRA.

Steinbeisser has served on the Lower Yellowstone Irrigation District board of directors for 50 years, including 29 years as president and still serves today at the continued request of his peers and the LYIP who appreciate his experience and diplomatic skills. He was elected to the MWRA board of directors in 2013 and continues to serve today.

Steinbeisser was a member of the Montana Dakota Sugar Beet Growers Association for 22 years as well as the National Sugar Beet Growers Association, including two years as president. He traveled extensively to Washington, DC to lobby for sugar, work on several farm bills and protect growers during the NAFTA negotiations and other federal trade deals. He also served two terms as representative to the Montana legislature and then as District 19 senator from 2005-2012. He served on several committees and was often relied on by both political parties to fairly moderate contentious legislative hearings.

Mike Murphy of the MWRA said, “In the legislature and as a member of the MWRA and LYIP board of directors, Don has worked steadfastly to protect water and other private property rights for the benefit of Montana’s hard working agricultural producers. Most recently, Don and the LYIP have been in a legal battle with extremist environmental groups trying to force



Don Steinbeisser and Mike Murphy

the removal of their Intake diversion.”

Steinbeisser was born in Sidney and raised on the family farm where his sons and nephew now farm. After high school, he joined the army reserves and was honorably discharged in 1962. He returned to Sidney and farmed with his father and brother Joe raising sugar beets, cattle, sheep, corn, wheat and hay. He married Leona Gierke in 1959 and together they raised five children. Leona died unexpectedly in January 2006, after 46 years of marriage. Don married Amelia (Lia) in December 2007. They have ten grandchildren and seven great grandchildren.

Steinbeisser’s daughter-in-law DelRae wrote, “Though somewhat retired, Don is still relied upon for his wisdom, experience and advice. He is the patriarch of our family, the role he cherishes the most.”

Canisters at Richland County Landfill to Reopen Thursday

Canisters at the Richland County landfill have been closed temporarily due to the dumping of about 30 barrels of oil over two weekends. County Commissioners said the canisters will reopen on Thursday, November 9th but Commissioner Loren Young said, “If the abuse starts up again, we will consider closing them again.”

The county has seen an uptick in dumping at sites in Lambert and Savage as well as at the landfill. The canisters are designed to accommodate “under the sink” garbage and small branches, etc. not truckloads of trash. Lately, the sites have been the scene of large amounts of white goods or appliances, construction materials and other items which are not allowed.

Lights are being installed at all three locations with Savage and the landfill location to be ready within a few days. Weather

permitting, Lambert will be next. New signage explaining the restrictions on use of the canisters is also being prepared and will be installed at each location. The county is also considering installing surveillance cameras depending on the legal ramifications. Illegal dumping costs the taxpayers money with extra personnel required to deal with cleanup and the commissioners would appreciate any information that would help stop it.

Appliances, tires without rims, trees and shrubs are all accepted at the landfill at no charge, with specific areas for each. Small amounts of oil, such as that from changing the oil in a car, are also allowed.

The landfill is open Monday through Saturday from 7:30 a.m. to 4:15 p.m.



Sidney Defeats Dillon In Quarterfinal Playoffs

The Sidney Eagles defeated Dillon last Saturday afternoon in quarterfinal playoffs, 38-22. The Eagles will host Columbia Falls this Saturday at 1 p.m. in the semi-final playoffs. Christian Dean catches an interception in the game. (Photo by Pam McGlothlin)

Check Our Facebook For Weekly Menu or Changes

Book Your Parties Today!

Breakfast Buffet:
10am-2pm Every Sunday
Salad Bar & Lunch Menu Available

Sat. Steak Night:
5-9pm

Kat's Kitchen

123 3rd St SW • Sidney, MT
406-630-2608 • Check Us Out On

Yellowstone Chiropractic Clinic

(406)-433-4757 222 2nd. Ave. SW
1-866-433-4757 Sidney, MT 59270

Dr. Ryan Laqua
Chiropractic Physician & Certified Medical Examiner

• Sports Injuries • DOT Physicals
• Personal Injuries & Pain Conditions

OPEN BACK IN OUR OLD LOCATION!

301 Main St.
Watford City, ND
Open Tues - Sat: 6:30am - 2pm
701-335-6565

Pickup And Delivery Dates:

Sidney: Mon & Thurs
Watford City: Wed & Sat

Serving Watford City At Meyer's Department Store
200 N Main • 701-444-2906 | Mon-Fri: 10am - 6pm • Sat: 10am - 5pm

Serving Sidney At Big Sky Embroidery And Design
108 E Main • 406-433-7679 | Mon-Fri: 10am - 5pm

DRY CLEANING | SHIRTS & JEANS STARCH | WELDERS STARCH

1129 2nd Ave W • Williston, ND | 701-572-3734 | www.willistondrycleaners.com
Mon-Fri: 8am - 6pm • Sat: 9am - 3pm

Happy Thanksgiving

From:

The Roundup

In order to spend the Thanksgiving Holiday with friends & family, we will be closed on Thanksgiving Day & Friday, November 24. Advertising Deadline is 4pm Wednesday, November 22.

111 West Main • Sidney, MT
406-433-3306 • 1-800-749-3306

STATISTICS

LAKE WATER LEVEL REPORT

Sakakawea

Current Elevation.....	1841.3
Last Week's Elev.	1841.7
One Year Ago	1839.1
Release For Day (C.F.S.)	15,000

SIDNEY WEATHER DATA

Source: MSU Eastern Agricultural Research Center

Date	High	Low	Precip.
October 30.....	31	20	0.00
October 31.....	39	19	0.00
November 1.....	42	28	0.00
November 2.....	31	26	0.00
November 3.....	31	26	1.30
November 4.....	28	11	0.10
November 5.....	19	10	1.10
Total YTD Precipitation.....			8.08

OBITUARIES

David Fasching, 63 Sidney, MT

Private funeral services were held for David Fasching, 63, of Sidney at Fulkerson-Stevenson Funeral Home of Sidney. Family received friends on Saturday, November 4 from 2-3:30 p.m. at Fulkerson-Stevenson Funeral home of Sidney. Remembrances, condolences and pictures may be shared with the family at www.fulkersons.com. Dave died on Monday, October 30 at Sidney Sugars, Sidney, MT.

Healthy Smiles Dental and Orthodontics Veterans Day Special

Healthy Smiles Dental and Orthodontics will host a Veterans Day special on Thursday, Nov. 9 with free cleanings and exams for all veterans. Please call 406-433-7645 to set up your appointment today. Healthy Smiles is located at 203 2nd Ave. SW in Sidney.

USDA Announces Enrollment Period for Safety Net Coverage in 2018

The U.S. Department of Agriculture (USDA) today announced that starting Nov. 1, 2017, farmers and ranchers with base acres in the Agriculture Risk Coverage (ARC) or Price Loss Coverage (PLC) safety net program may enroll for the 2018 crop year. The enrollment period will end on Aug. 1, 2018. “Since shares and ownership of a farm can change year-to-year, producers must enroll by signing a contract each program year,” said Farm Service Agency (FSA) Acting Administrator Steve Peterson. “I encourage producers to contact their local FSA office to schedule an appointment to enroll.” The producers on a farm that are not enrolled for the 2018 enrollment period will not be eligible for financial assistance from the ARC or PLC programs for the 2018 crop should crop prices or farm revenues fall below the historical price or revenue benchmarks established by the program. Producers who made their elections in previous years must still enroll during the 2018 enrollment period. “This week FSA is issuing approximately \$850 million in rice payments,” said Peterson. “These payments are part of the \$8 billion in 2016 ARC and PLC payments that started in October to assist enrolled producers who suffered a loss of revenue or price, or both. Over half a million producers will receive ARC payments and over a quarter million producers will receive PLC payments for 2016 crops.”

The ARC and PLC programs were authorized by the 2014 Farm Bill and offer a safety net to agricultural producers when there is a substantial drop in prices or revenues for covered commodities. Covered commodities include barley, canola, large and small chickpeas, corn, crambe, flaxseed, grain sorghum, lentils, mustard seed, oats, peanuts, dry peas, rapeseed, long grain rice, medium grain rice (which includes short grain and sweet rice), safflower seed, sesame, soybeans, sunflower seed and wheat. Upland cotton is no longer a covered commodity. For more details regarding these programs, go to www.fsa.usda.gov/arc-plc. For more information, producers are encouraged to visit their local FSA office. To find a local FSA office, visit <http://offices.usda.gov>.

FSA County Committee Elections to Begin; Producers to Receive Ballots Week of Nov. 6

Farmers and Ranchers Have a Voice in Local Farm Program Decisions

North Dakota Farm Service Agency (FSA) Acting State Executive Director Brian Haugen today announced that the U.S. Department of Agriculture (USDA) will begin mailing ballots to eligible farmers and ranchers for the 2017 FSA County Committee elections on Monday, Nov. 6, 2017. Producers must return ballots to their local FSA offices by Dec. 4, 2017, to ensure that their vote is counted. “County committee members represent the farmers and ranchers in our North Dakota communities,” said Haugen. “Producers elected to these committees have always played a vital role in local agricultural decisions. It is a valued partnership that helps us better understand the needs of the farmers and ranchers we serve.”

Nearly 7,700 FSA County Committee members serve FSA offices nationwide. Each committee has three to 11 elected members who serve three-year terms of office. One-third of county committee seats are up for election each year. County committee members apply their knowledge and judgment to help FSA make important decisions on its commodity support programs; conservation programs; indemnity and disaster programs; emergency programs and eligibility.

Haugen said producers must participate or cooperate in an FSA program to be eligible to vote in the county committee election. Farmers and ranchers who supervise and conduct the farming operations of an entire farm, but are not of legal voting age, also may be eligible to vote.

Farmers and ranchers will begin receiving their ballots the week of Nov. 6. Ballots include the names of candidates running for the local committee election. Voters who did not receive a ballot can pick one up at their local FSA office. Ballots returned by mail must be postmarked no later than Dec. 4, 2017. Newly elected committee members and their alternates will take office Jan. 1, 2018.

For more information, visit the FSA website at www.fsa.usda.gov/elections. You may also contact your local USDA Service Center or FSA office. Visit <http://offices.usda.gov> to find an FSA office near you.

MNAXLP

EVENTS

SEND US YOUR EVENTS!

THE ROUNDUP: PO Box 1207
111 West Main • Sidney, MT 59270
406-433-3306 • Fax: 406-433-4114 • Email: classads@esidney.com

RICHLAND COUNTY
Events in Sidney unless otherwise listed. MT Zone.
Thurs., Nov. 9
Free Dental Cleanings And Exams For Veterans - Call 406-433-7645 to schedule an appointment. Healthy Smiles Dental & Orthodontics, 203 2nd Ave. SW, Sidney, MT.
5-7 p.m. - **FCCLA Fall Fest** - Carnival games, prizes, soup dinner. East Side School, Fairview.
Fri., Nov. 10
11:30 a.m. - **Richland Red Hatters Lunch Meeting** - Footers. RSVP by Nov. 8. Call Sylvia, 798-3882 or Margaret, 488-4613.
Sat., Nov. 11
9 a.m. - 2 p.m. - **Fall Bazaar & Bake Sale** - Cinnamon rolls, soup, sandwiches, pie, coffee, baked goods and gift baskets. Shepherd of the Valley Lutheran Church, 211 East Holly, Sidney, MT.
5-8 p.m. - **Richland County Sportsmen's Club, Inc. Shooting Range Fundraiser** - Great family fun. Free taco feed, bowling and shoes. Dutch auction, silent auction, door prizes for kids, ladies and mens gifts, gun raffle, food gift certificate drawings for veterans only. OK Lanes, 173 Miller Street, Sidney, MT.
Sun., Nov. 12
11 a.m.-2 p.m. - **St. Theresa's Fall Dinner** - Turkey and all the trimmings, salads and pies. Free will donation. Lambert School Multi-Purpose Room, Lambert, MT.
Tues., Nov. 14
10 a.m. - 4 p.m. - **Miniature Art Show** - Viewing is free and open to the public. This event will continue through Jan. 20. MonDak Heritage Center, 120 3rd St. SE, Sidney, 406-433-3500. Tuesday-Friday, 10 a.m.-4 p.m.; Saturdays, 1-4 p.m. 4-6:30 p.m. - **Sunrise Women's Clinic Open House** - Public is welcome to take a tour, ask questions, meet the staff and board members. 116 3rd Ave. NW, Sidney, MT.
Wed., Nov. 15
9 a.m.-3 p.m. - **MonDak Ag Research Summit** - A free event to learn about research relevant for your operation. Crop diseases, wheat stem sawfly/invasive weeds; dryland and irrigated cropping systems, pulse crops, small grain varieties for irrigated and dryland production and more. Richland County Event Center, Sidney, MT. Register by Nov. 8 at <https://tinyurl.com/y9b218xs> or contact Beth Redlin at beth.redin@ars.usda.gov, 406-433-2020.
Thurs., Nov. 16
5 p.m. - **East Fairview School Chili & Turkey Bingo** - Chili will be served at 5 p.m., \$5/person. Bingo starts at 6 p.m. Prizes include 20 turkeys, \$50 blackout, 50/50 drawing and more. East Fairview School Gym.
Sat., Nov. 18
10 a.m. - 1 p.m. - **Annual Bazaar** - Bake sale, cookie walk, lunch. Lonsdale United Methodist Church, 201 3rd Ave. SE, Sidney, MT. 433-3110.
6 p.m. - **Meat Madness** - Social, 6 p.m., supper, 6:30 p.m. Live music by Stumbling Free, 7-11 p.m., live and silent auction. Tickets \$40 and can be purchased at Central Elementary, John Stockhill Jewelers, Sidney Area of Commerce and Agriculture and Stockman Bank. All proceeds going toward construction of restrooms and concession facility on the North side of Swanson Field at SHS. Richland County Event Center, Sidney, MT.
6 p.m. - **Fairview Community Foundation Festival of Trees** - Wreaths and trees, silent auction, 6 p.m., live auction, 7 p.m. Free Hors d' oeuvres from 6-8 p.m. Karaoke at 9 p.m., Double Barrel Saloon & Casino, Fairview. To donate a tree or wreath call Laurie, 406-489-1094 or Marsha, 406-480-0349.
Fri., Nov. 24
11 a.m. - 2 p.m. - **Chili Cook-Off** - Old Fire Hall, Sidney, MT. Prizes awarded. Sign up at Reynolds Market customer service desk or on Reynolds Market facebook page.
3-5 p.m. - **Parade Of Trees** - View every tree on display at the MonDak Heritage Center from 3-5 p.m. Live auction will be after the viewing of the trees. For more information call 406-433-6763.

McKENZIE COUNTY
Events in Watford City unless otherwise listed. CT Zone
Tues., Nov. 14
5 p.m. - **Turkey Bingo** - The local 4-H will be having their soup and sandwich fundraiser starting at 5 p.m. as well as a bake sale prior to Bingo. Bingo will start at 6:30 p.m. \$1 per card. Middle School Commons Area, Watford City, ND.
Thurs., Nov. 16
5:30-7:30 p.m. - **Explore Art Community Classes (Gouache)** - Gouache paint is similar to watercolors, but is opaque, which allows for different techniques. Supplies included with your \$59 per class registration fee. Portion of proceeds benefit Long X Arts Foundation. Rough Rider Center, Watford City, ND. To register call 701-572-2835.
6:30-8:30 p.m. - **Holiday Wine and Canvas Party** - Community paint night and pride of Dakota food and wine sampling. \$35. Gallery On The Go, 141 3rd St. SW (2nd floor) Watford City, ND.
Fri., Nov. 17
2 p.m. - **Camp Christmas** - Holiday art and craft class for kids, 2nd-6th graders. This event continues on Dec. 1, 8 and 15. Homeschoolers, 2-3:15 p.m.; after school artists, 3:45-5 p.m. \$55 for four week class, supplies included. Rough Rider Center, Watford City, ND. Hosted by the Long X Arts Foundation.

WILLIAMS COUNTY
Events in Williston unless otherwise listed. CT Zone.
Fri., Nov. 10
5 p.m. - **2017 Charity Ball - Deuces Wild Dueling Pianos** - Dinner and dessert, silent and live auctions, cocktails, dancing. Grand Williston Hotel, 3601 2nd Ave. West, Williston, ND.
6-11:30 p.m. - **Vet's Fest** - Admission, free will donation of food or money for this local veterans benefit. Learn more about available local services from area Veteran Service Groups. People's choice chicken wing voting from 6:30-8 p.m., cash bar, music by Jade's Agenda, Harley-Davidson Fashion Show and more. Black Magic Harley-Davidson, 6611 2nd Ave. West, Williston, ND. For more information contact Kim Schmalz, 701-572-1798.
Fri., Nov. 17
9 a.m.-4 p.m. - **Confluence Quilters Monthly Meeting** - All experience levels invited and instruction provided. Bring your own lunch and unfinished projects. This event continues on Nov. 18. Missouri-Yellowstone Confluence Interpretive Center. 701-572-9034.
Fri., Nov. 24
6 p.m. - **Holiday Lights Parade** - The parade starts at the New Armory and ends at Harmon Park. Downtown Williston, ND. For more information call Williston Chamber of Commerce, 701-577-6000.
After Parade - **Warm Up After Light Up** - Hot chocolate, sweet treats and live music. Say hello to Santa. Free event, donations welcome. James Memorial Art Center, Williston, ND, 701-774-3601.

DAWSON COUNTY
Events in Glendive unless otherwise listed. MT Zone
Sat., Nov. 11
10 a.m. - **Glendive Cancer Support Group** - Survivors and caregivers welcome. GMC Canary Center, 202 Prospect Dr., Glendive, MT. 406-377-4639.
7:30 p.m. - **3 Redneck Tenors Concert** - DCHS, 900 N. Merrill, Ave., Glendive, MT. For more information contact Bruce Peterson, 406-377-5846 or emca.pres@gmail.com.
Wed., Nov. 15
12-1 p.m. - **October Lunch 'n' Learn** - Join Dave Steiner for "Enhancing Porches and Entryways for the Holidays." Dave will demonstrate several great holiday ideas for your homes front entrance. Tea and coffee provided, bring your own lunch. Glendive Public Library Community Room. For more information visit <http://tinyurl.com/prgkapr>.
Sat., Nov. 18
5:30 p.m. - **Denim & John Deere Green** - Farmers and ranchers appreciation dinner. Keynote by Jon Arneson, dance to North River, social hour, 5:30 p.m., dinner, 6:30 p.m. EPEC, Glendive, MT. RSVP to the Glendive chamber, 406-377-5601 or email chamber@midrivers.com.
7 p.m. - **Light Parade** - Starts at Slocum & Kendrick and ends at the EPEC. Downtown Glendive, MT. For more information contact Chamber of Commerce, 406-377-5601.

The MonDak Heritage Center Announces Paleoindians Of Montana By Ruthann Knudson

The MonDak Heritage Center announces Paleoindians of Montana: 13,000 to 8,000 Years Ago by Ruthann Knudson on Thursday, November 16 at 7:00 p.m. at the MonDak Heritage Center, 120 3rd Ave SE, Sidney. Montana was a different landscape 13,000 years ago, with glacial melt water to the north, more ice in the mountains, and a climate cooler than today's—and paleoindian people lived here! Knudson discusses the Montana Anzick/Wilsall, Barton Gulch, Indian Creek, MacHaffie, and Mill Iron archaeological sites, as well as sites in North Dakota, Wyoming, Idaho, and the Canadian provinces. She details how people relied heavily on big-game food sources, small mammals, fish, and plants and also describes how during these years there were wildfires, volcanic eruptions, and natural climatic variations to which people adapted as they made the beautiful stone tools we still find today. Ruthann Knudson is an adjunct professor of sociology and anthropology at Montana State University and lives in Great Falls. This fourth program in the Cultures of Montana series for Home-



Ruthann Knudson

town Humanities is FREE and open to the public. Sponsored by Humanities Montana, an independent, nonprofit affiliate of the National Endowment for the Humanities. For more information and the full schedule of programs for the Cultures of Montana series and Hometown Humanities contact MDHC at (406) 433-3500 or visit mondakheritagecenter.org.

MNAXLP

Diana Youngquist
Independent Skin Care Consultant

34609 Highway 200

Home: 406-798-7754 Cell: 406-489-3368
diayoung@outlook.com

Independent Consultant



Richey FFA Hosts Annual Harvest Banquet

FFA members at Richey High School hosted their Annual Harvest Banquet. The purpose of the Banquet is to raise money to attend the National FFA Convention in Indianapolis. The FFA members prepared food for the banquet and provided the free meal to the community. The members also prepared gift baskets to be auctioned off at the Harvest Banquet by Rick Kniepkamp. Above: Richey FFA Students. Right: Richey High School foreign exchange student, Aybuke Tombul works on her harvest basket. (Submitted by Anna Dragseth)



Gifts From The Heart

Submitted by Jakkie Waller

The Richland County Christmas Coalition is pleased to announce that the annual "Gifts from the Heart" gift distribution for those in need is scheduled for December 9, 2017. The event will once again be held at the Masonic Temple (on Main, across from the Courthouse) in Sidney. The hours for the distribution will be from 7:00 a.m. until 1:00 p.m. and recipients will be allowed to choose gifts for a child that resides full time in their home and is under the age of 18. Recipients must be residents of Richland County. The Gifts from the Heart program also provides food bags along with gift distribution. The goal is to provide every family with all the in-

gredients to make Christmas Dinner too!

Now is the time to begin keeping an eye out for gifts to donate. Many good buys can be found locally and Christmas will be here before we know it. Unwrapped toy donations can be dropped off at any local Edward Jones offices. Hats & mittens can be donated at any Richland County financial institution. Money donations can be taken to Stockman Bank or by contacting Jakkie Waller for pick up.

If you or your group would like to assist in setting up, food sorting or be shopper assistants, please call or text Jakkie at 406-480-9117.

Please remember, we ask that children DO NOT accompany the parent or

guardian during the shopping experience.

Fall Bazaar

Shepherd of the Valley Lutheran Church is holding their annual fall bazaar and bake sale on Saturday November 11, beginning at 9 a.m., 211 East Holly Street in Sidney.

Bring a friend and come for a fresh baked cinnamon roll and coffee or just enjoy some shopping for that VIP in your life. Choose from a selection of specialty gift baskets, crafts and quilts.

Baked goods will also be available for sale. Soup and sandwiches, pie and coffee will also be available for purchase.

GRAND OPENING

Friday, November 10th • 11am - 7pm

FOOD! FUN! FREE PLAY!
DRAWINGS! LEAGUE SIGNUPS!

PLAY ON ONE OF OUR PREMIUM GOLF SIMULATORS!

205 Jennison Drive • Fairview, MT | 406-742-3630

Be Prepared For Winter With A
REMOTE CAR STARTER

Start Your Vehicle With Just the Push of a Button From the Comfort of Your Home or Office

We Install On All Makes & Models!

Just In Time For Christmas

Gem City
MOTORS

703 S. Central • Sidney, MT | www.gemcitymotors.com | 406-433-8120

*See Dealer For Details.

The Eagle Foundation brings you...
MEAT MADNESS

SATURDAY
NOVEMBER 18TH
6:00 PM SOCIAL 6:30 PM SUPPER
RICHLAND COUNTY FAIR EVENT CENTER

Come experience our version of the once popular turn of the century beefsteak events!
Join the Eagle Foundation along with corporate sponsor:
Mid-Rivers Communications

as we serve up decadent beef, chicken, and pork with sides of potatoes, vegetables, and dessert. The catch? No forks, no knives and no spoons...fingerfood at its best!

ALL proceeds going toward construction of Restrooms and a Concession facility on the Northside of Swanson Field at SHS.

Dance to Live Music by Stumbling Free of Helena, Montana 7-11 pm
Live and Silent Auctions!
Processed and Packed 1/2 Beef, Diamond Stud Earrings, Henry Golden Boy 22 Rifle, 5-Night Whitefish Mountain Resort Vacation, Reclaimed Wood and Tin Box, 20 qt. Pelican Cooler, and much more!

TICKETS \$40 AVAILABLE
Purchase yours at Central Elementary, John Stockhill Jewelers, Sidney Area Chamber of Commerce and Agriculture, and Stockman Bank!

JOIN US FOR RAFFLES, FREE TACO FEED, FREE BOWLING & MORE!
NOV 11 • 5-8PM AT OK LANES
173 MILLER STREET • SIDNEY, MT
Dutch Auction, Silent Auction, Door Prizes for Kids, Gifts for Men and Women, and a Drawing for Vets

Raffling these Items:

- Ruger 10-22 Rifle
- 20 Gauge Benelli Shotgun
- 32" TV

Must be present to win

- Ruger Precision 6.5
- Creedmore Rifle with Hawks Scope & Hard Case

Need not be present to win, only 200 tickets available. Approx value \$2,500

Veterans!
Enter a Drawing to Win \$50 Food Gift Certificate (4 Winners)
Or \$25 Food Gift Certificate (1 Winner)
Bring The Whole Family!

Richland County Sportsmen's Club, Inc.
Sidney, Montana

Must be able to pass a background check for all firearms.
All proceeds will go toward the purchase of land for a shooting range.



THIS HOLIDAY SEASON,
HELP A FAMILY IN NEED

Welcoming donations of
Hats & Mittens for the
Christmas Coalition &
Non-Expired Canned
Goods for the
Fairview
Food Bank

Join us every
Friday in December
for Hot Cider &
Cookies!

Merchants Bank
Big enough to serve you | Small enough to know you
216 S. Ellery Ave. • Fairview, MT | 406-742-5203 | Mon-Fri: 9am - 4pm

Pictures With
Santa
Fri, Dec 15 • 1-3pm



Fairview Community Foundation

Festival of Trees
November 18th at 6pm

- Live & Silent Wreath & Tree Auctions
- Free Hors d'oeuvres
- Karaoke

Call Laurie at 406-489-1094 or Marsha at 406-480-0349 if you would like to decorate & donate a tree or wreath

Held At The Double Barrel • 401 Ellery Avenue • Fairview, MT

Enjoy The
Lighting of the Bridge

Unique Gift Ideas for the
Grandpa Who Has Everything!
Jerky • Pork Rinds • Pickled Eggs
Pork Hocks • Specialty Candies
And Candy Canes For Everyone

East-Mont Enterprises Inc.
CANDY • PAPER GOODS • CLEANING SUPPLIES & MORE!
608 E. Main • Sidney, MT | Wholesale Distributors | 406-433-2910

ENJOY ALL
THE EVENTS
IN FAIRVIEW
THIS
SUNDAY!

LYREC
LOWER YELLOWSTONE
RURAL ELECTRIC COOPERATIVE

Your "Touchstone Energy" Cooperative

3200 W. Holly • Sidney, MT | 406-488-1602 • www.lyrec.com

Enjoy The Festivities
This Sunday!

\$4.00 off ANY 16" PIZZA or **\$2.00 off ANY 16" ECONOMY**
Now Thru Nov 12th

POWDER KEG
EST. 1972
45 Years

WWW.POWDERKEGPIZZA.COM
New Items, Menus, Specials & More!

CUSTOMER REWARDS CARD:
For each \$30 or more that you spend per visit, earn one star. Collect 5 stars & get \$10 off your next purchase!
No Cards To Keep, We Do It All!

Pizza • Burgers • Beer • & More!
Free Ice Cream!

Fairview, MT • 406-742-5180
Open Tues-Fri at 4:30 pm • Sat & Sun at 2 pm

Happy Holidays!

Water Hole #3

416 S. Ellery, Fairview
406-742-5224

Enjoy the weekend
and an ice cold
Pepsi!

BLUE ROCK PRODUCTS
SIDNEY MT

FAIRVIEW BRIDGE

**Come out and enjoy
the lighting of the bridge!**

Sunday, November 12
Fireworks at Fairview Bridge at 7:00 pm

Stockman Bank
Montana's Brand of Banking

301 West Holly Street
Sidney: 433-8600

stockmanbank.com
©2017 Stockman Bank | Member FDIC

**Stop In
For Great
Food & Fun!**

Festival of Trees
Sat, Nov 18th • 6pm
Live & Silent Auction of Trees & Wreaths
Free Hors d'oeuvres 6-8pm
Karaoke Starts at 9pm

Steakhouse Hours:
Sun-Thurs: 5-9pm • Fri & Sat: 5-10pm • Prime Rib Every Fri & Sat!

Weekday Happy Hour
From 5-7pm!

LIVE POKER NIGHTLY!

DOUBLE BARREL SALOON & CASINO
401 ELLERY AVE
FAIRVIEW, MT
406-742-8110

Bridge to the Holidays

Sunday, November 12th



Bridge Lighting 5-8pm Fireworks 7pm

- Chili & Refreshments by Fairview High School Drama Club
- Horse & Wagon Rides by Katelyn Dynneson
- Live Music by Glenda Kreiman
- Free Will Donations For Fireworks

Santa Will Be There!




Shari Twigg, MD

Welcome to Fairview for Silver Bells
Wishing you and yours a very Merry Christmas
and Healthy New Year in 2018!

ADVANCED AESTHETICS
A Service of SIDNEY HEALTH CENTER

HOURS
Monday: 9 AM - 5 PM
Tuesday: 10 AM - 7 PM
Wednesday: 10 AM - 7 PM
Thursday: 9 AM - 5 PM

304 S Ellery, Suite 2 • Fairview, MT • Phone: 406-742-5256

Merry Christmas!

FROM ALL OF US AT

NEU'S SUPERVALU

- Grocery • Bakery • Fresh Meat • Beer
- Ice • Snacks • Sandwiches

406-742-5441 | 303 S Ellery St • Fairview, MT




Jacquelyn Free, FNP

Welcome to Fairview for Silver Bells!
Wishing you and yours a very Merry Christmas
and Healthy New Year in 2018!

MONDAK FAMILY CLINIC
An Outreach Service of
SIDNEY HEALTH CENTER

HOURS
Monday - Thursday:
8:30 AM - 5:00 PM
Friday:
8:30 AM - Noon

304 S Ellery • Fairview, MT • Phone: 406-742-5261

Happy Holidays!



TRIPLE DISPOSAL

776-2500 SAVAGE, MT



GOLD RUSH CASINO

504 South Ellery
Fairview, MT

Lounge: 742-4653 • Office: 742-4654 • 10am - 2am

Season's Greetings



406-776-2334 • Savage

Happy Holidays
From All Of Us At:



HOTEL ALBERT
Lounge & Casino

419 S. Ellery • Fairview, MT | 406-742-5164

Welcome
To The Holidays!

Enjoy All The Festivities Sunday!



W.L. NEU CONSTRUCTION, INC.

Fairview, MT 59221
Office: 406-742-5549

Welcome to
Fairview's Silver Bells

Everyone at
MonKota Fertilizer
& Irrigation would
like to wish you a
Merry Christmas
and Thank You
for your business.



Mon-Kota, Inc.
Fertilizer & Irrigation
Sales & Service

Fairview, MT • 701-844-5300

Merry Christmas!



HURLEY'S
OILFIELD SERVICES

- Porta Potties • Potable Water
- Sewer System • Loaders
- Communications • Backhoe
- Trucking • Skid Houses

Fairview, MT
Dispatch: 701-844-1234

SIDNEY EAGLES

FOOTBALL SEMI-FINAL PLAYOFFS

Sat, Nov. 11 • 1 pm

Columbia Falls at Sidney



SIDNEY EAGLE FOOTBALL

Bottom (L-R): Alec Lovegren, Jarred Vojacek, Boston Peters, Bryce Thompson, Kolby Hutzenbiler, Jace Winter, Cooper McGlothlin, Nick Edwards. **2nd Row (L-R):** Kadin Lefors, Christian Dean, Jordan Darby, Jett Jones, Trey Fischer, Carter Johnson, Brody Skogen, Waylon VanBuren, CJ Nevins. **3rd Row (L-R):** Keelen Geiser, Jaxson Franklin, Tucker Swigart, Jace Johnson, Riley Jackson, Garrison Hughes, Jayden Vojacek, Tate Wieferich, Kaden Olsen, Kade Rindahl. **4th Row (L-R):** Kelton Lefors, Ritchie Crosby, Layne Swigart, Riley Waters, Riley Kostelecky, Sawyor Thogerson, Wyatt Heringer, Slade Cutler, Taylen Eggum. **5th Row (L-R):** Kade Graves, Trevor Dean, Xander Mackenzie, Alex Lee, Ryan Wyman, Max Peters, Jackson Thogersen. **6th Row (L-R):** Jed Fox, Bill Steinley, Carter Hughes, Cash Cundiff, Ernie Clifton, Ryan Horner. **7th Row (L-R):** Dorian Obergfell, Ty Metz, Ben Wenzel, Dustin Coughlin, Trey Schepens, Ashton Swenson, Kolton Reid. **Photo by Pam McGlothlin.**

Gem City Motors

2017-GMC-SIERRA

UP TO \$10,000 OFF

703 S. Central • Sidney

406-433-3120

www.gemcitymotors.com

Screen Play

Mon-Thurs: 9-12 & 1-5
Closed Friday
2405 West Holly St.
406-433-2400
screenplay@midrivers.com

Rau Elementary School

406-482-8725
12138 Cnty Rd 350
Sidney, MT

Eagle Country Ford

Mon-Fri: 8am - 5pm
Sat: 9am - 1pm

215 East Main St • Sidney
1(800)482-1810 • 433-1810

www.richlandfcu.com

Richland

FEDERAL CREDIT UNION

Sidney & Roosevelt County
Office In Culbertson

GOOD LUCK SIDNEY EAGLE FOOTBALL!

Jones Construction Service Inc.

406-433-2987

Proud parents & grandparents of Jett Jones

It's All About Saying Goodbye

FULKERSON STEVENSON FUNERAL HOME

315 Second St. NW
Sidney, MT 59270
406-488-2805
email: ffh@fulkersons.com
www.fulkersons.com

John Stockhill JEWELERS

"The House of Diamonds"

116 S. Central Ave
Sidney, MT
406-433-2702

FRONTIER

Heating • Refrigeration • Air Conditioning

SIDNEY, MT
488-4657

Sales • Service • Installation

TRANE

HIGH CALIBER SPORTS & Athletics

Mon-Sat: 9am - 6pm
Shops at Fox Run
Sidney, MT | 406-433-1800

Reynolds MARKET

1151 S. Central • Sidney, MT
Open Daily 6am - 10pm
Grocery **433-2305**

reynoldsmarket.com

ELK RIVER PRINTING

Your 1-Stop Full-Service Print Shop

ALL COMMERCIAL PRINTING
Full Color Marketing Materials
Color Copies • B&W Copies
Lamination • Specialty Papers
Card Stock

433-4375 • Sidney, MT

FARM & HOME SUPPLY

809 East Main
Sidney, MT
406-433-3400

PIZZA & FINE FOODS

Hwy. 16 S, Sidney Montana

406-433-4650

THE DEPOT

Tri-County Implement

2429 W. Holly St.
406-488-4400

HURLEY'S OILFIELD SERVICES

- Potable Water • Sewer System
- Loaders • Communications
- Backhoe • Trucking
- Skid Houses • Porta Potties

Dispatch: 701-844-1234
Fairview, MT

FooterS 433-SUBS

616 S. Central
Sidney, MT
406-433-7827
Open 10:30am Daily

Richard L. Fink, D.M.D.
Erin B. Fink, D.D.S.

FINK DENTAL CENTER

122 2nd Avenue S.E.
Sidney, MT 59270
406-433-4422

East-Mont Enterprises Inc.

Candy • Paper Goods
Cleaning Supplies & More!

608 E. Main • Sidney
Wholesale Distributors
406-433-2910

GURNEY ELECTRIC inc.

Sidney, MT
406-482-3204

- Electrical Supplies & Equipment
- Decorative Lighting
- Electrical Service

Sidney Sugars

pepsi

BLUE ROCK PRODUCTS CO.

501 9th Ave NE, Sidney
406-433-3403

Richland Pump & Supply

(406) 488-8706
David Williams
Cell (406) 489-8706
Scott Ramus
Cell (406) 489-8707
1511 S Central Ave • Sidney

Good Luck! CM BUILT DOORS

406-480-5570
406-433-2504

Obstacles: Opportunities for Growth?

By Jerry "Doc" Kessler

Everybody knows that life has ups and downs. Life sometimes seems to have too much pain and misfortune. Hundreds of books have been written about the subject – dating back to Old Testament times. We still do not understand why people have to suffer. I will try to briefly discuss the medical, religious, and psychological aspects of this topic. It is a subject I can relate to (medically and personally), have researched at length, but certainly do not have all the answers.

A large amount of physical pain is actually useful. If you didn't feel pain, you might not pull your hand away from a hot stove. If you ignore the pain of appendicitis or a heart attack, the results can be disastrous. In the book "The Gift of Pain," Dr Brand, reminds us that the lack of normal pain sensation (in Diabetes and Leprosy) is what puts patients at risk of sores, injuries, infections, and amputations. The unrelenting pain that cancer patients have, on the other hand, is terrible and unfair. This is an obvious situation where doctors should prescribe narcotics (and other medications) to ease suffering.

Theologians (like St Augustine and Martin Luther) wrote that pain and suffering is a part of God's creation. Sometimes people need pain to motivate them to correct the errors in their lives. Authors in past centuries did not get mad at God for this human experience. It was, in many ways, a reminder that life on this earth is not perfect.

What if you don't believe in a Judeo-Christian God? Even if you don't, pain may have some value. Friedrich Nietzsche, the famous 19th century German philosopher, made this famous statement: "What does not kill me makes me stronger." In a similar way, the first of the Four Noble Truths of Buddhism says that "all life is suffering." When a person acknowledges this fact, then the pain is easier to bear. Some people are better at this than others.

Why do people experience pain when they have done nothing wrong? That is the tougher question. Recall the story of Job in the Old Testament. The "trials of Job" challenges one's belief that God is kind and compassionate. Job lost everything (family, friends, and fortune) despite the fact that he was a good man. He could hardly believe

that this was happening to him. The Bible says that Job was blameless. Despite his suffering, Job refused to give up his faith. By the grace of God, he eventually had his blessings restored.

We can calmly discuss pain in a theoretical manner, but it is much different if we experience this on a personal level. Harold Kushner, a Jewish rabbi, wrote a book entitled "Why Do Bad Things Happen to Good People." It explains how this question was forced on him when his own son became ill. Another good read on the subject is Philip Yancey's famous book: "Where is God When It Hurts." This author notes that modern day people seem to denounce the value of pain, and accuse God of lacking compassion. Some people deny the existence of God because of "the pain issue." The persecution and resurrection of Christ, in my opinion, answers that question. Of course God loves us. He sent His Son to die for us. And I don't believe God causes pain. It is possible that pain "just happens" or is the work of the devil. Theologians say that pain is the result of Adam's disobedience in Eden by taking the iconic apple from "the tree of knowledge of good and evil, for when you eat from it you will certainly die." It was Adam's desire to be God that has caused the problem.

The Cursillo movement also addresses this issue. These retreats were started by Catholics in Spain in 1944. Many other Christian denominations now have similar retreats. St Matthew's Church of Sidney sponsors "Cum Christo" weekends each February. They invite Christians of all denominations, and are

similar to Cursillo weekends. One of the many topics discussed during these weekends is "Obstacles." Not to give too much away, but the implication is that the only true obstacle is ourselves. If you want to learn more about these weekends contact the 2018 retreat leaders: Roy Fisher (406-480-1341) or Julie Brodhead (406-489-1500).

Alcoholics Anonymous also talks about this subject: "We came to realize that pain and suffering provide more of an opportunity for growth than does comfort and success." Much of our suffering is our own doing. Even in situations where it doesn't seem like we are at fault, we need to admit that we are at least part of the problem – otherwise there is no solution. It is noteworthy that Eldridge Cleaver, an early leader of the Black Panther movement, famously made a similar statement. Nowadays this is something that few people care to admit.

C.S. Lewis, a famous Christian author, said that pain is a "megaphone to rouse a deaf world." Lewis says that God gets our attention through pain hoping that we become humbled and less self-sufficient. We need to give up the notion that we can fix every problem with self-will and determination. We need God, and can only find contentment by loving and serving Him.

Is pain a useful thing? Many famous people think so. But nobody wants it in their own lives. Are obstacles an opportunity for growth? I think so. The question has medical, psychological, and philosophical implications. I also believe there is a spiritual aspect to this topic. I raise the questions. I leave the answers to you.

Rau Student Of The Quarter

Rau Elementary School is proud to announce Lily Reisig, daughter of Lincoln and Kelly Reisig, as the Student of the Quarter. Lily is very hard working and strives to do her best at everything she does. She is always willing to lend a helping hand to teachers and students alike. She is respectful and completes her tasks throughout the day with a smile on her face. Lily is kind and does her best to make sure everyone is included. Lily is polite and follows the rules in the classroom, lunchroom and on the playground. Lily's special interests include anything Harry Potter, and hanging out with friends.



Lily Reisig

OPEN HOUSE



**Tuesday,
November 14th
4-6:30pm**

We invite the public to stop by, get a tour, ask us questions, meet our staff & board members & to learn about all that we do!

116 3rd Ave NW • Sidney, MT (across from the library)



**YOU'RE INVITED TO...
SIDNEY HEALTH CENTER'S**

ANNUAL MEETING WEDNESDAY, NOVEMBER 15TH SIDNEY COUNTRY CLUB

Member sign-in and a dinner buffet starts at 6:00 p.m.
The annual meeting will follow at 6:30 p.m.

AGENDA:

Election of Directors • Financial Report • Other Reports • Presentation on 2017 Highlights



Find us on
Facebook

Although Sidney Health Center is a membership corporation, non-members are welcome to attend. If you are interested in becoming a member, please call Jacquie McDermott, Executive Assistant, at (406) 488-2364 or stop in at Sidney Health Center, 216 14th Avenue SW, Sidney, MT for an application.

216 14TH AVE. SW • SIDNEY, MT • (406) 488-2100
VISIT US ONLINE: WWW.SIDNEYHEALTH.ORG

YEAR END SALES EVENT

Celebrate America's Best-Selling Brand.



\$1,000 + 0%
For 72 Months*

EXPLORER



ST 3539

F150



ST 3574

EXPEDITION



ST 3584

ESCAPE



ST 3535



*Ends November 30, 2017

**"Experience the Eagle
Country Difference!"**

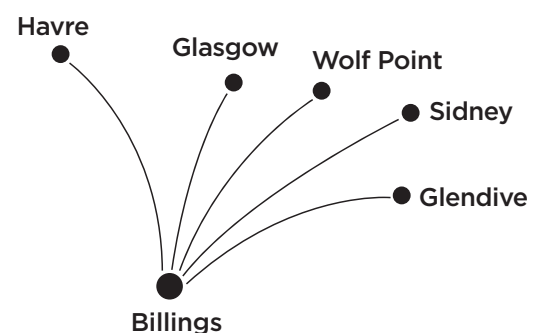
215 East Main • Sidney, MT | 433-1810 or 1-800-482-1810 | eaglecountryfordsales.com



Dash away to Billings.

'Tis the season to connect with family and friends on a fast flight from Northeastern Montana to Billings and beyond. Enjoy the holidays, and the ride.

\$29*
from each way



Cape Air
Enjoy the ride.

capeair.com 800-CAPE-AIR

*Including all taxes and fees. Fares are subject to availability and other conditions. Fares may change without notice, and are not guaranteed until ticketed.

The Roundup Classifieds

Reach Over 21,000 Readers Each Week In Eastern Montana & Western North Dakota And Always On The Internet at roundupweb.com
(Paypal required for online purchases)

Add a photo to your classy online! (additional charge)

Now Taking Credit Cards! (5% charge added to all transactions)

Get Up To 30 Words For Just \$9.25 • Deadline: Monday noon

TIRES FOR SALE
\$100⁰⁰ Each
We've just purchased a semi-load of new Michelin LT 245-75-17, 10 ply pickup tires & Goodyear 265-70-17 pickup tires & are selling them for \$100 each - carry out price.
MAGNUM MOTORS
1820 2nd St W • Williston, ND | 701-572-0114

INSTALLED WINDSHIELDS FOR MOST MAKES & MODELS ONLY \$220
MAGNUM MOTORS
Williston, ND • 701-572-0114 • 701-770-6375

HELP WANTED DRUG AND ALCOHOL TESTER
Looking for a male drug and alcohol tester. Will be mostly in the office but may be required to do some mobile work. Furnished housing available. Call Rena, 406-489-1467.

FOR SALE
We sell Mouse Assault bait. Kills mice quickly. Williston Saddlery, Hwy 2 West. 701-572-2267.

RITCHIE LIVESTOCK WATER FOUNTAINS
On hand and we have replacement parts. Williston Saddlery, Hwy 2 West. 701-572-2267.

ALFALFA HAY FOR SALE
500 1st cutting irrigated alfalfa bales put up in nice shape. Net wrapped, about 70 inch bales. Cartwright, ND. Call 701-425-1913.

THESE AND MANY MORE GREAT FAMILY HOMES!

NEW!
Home offers 780 sq.ft. on main floor and 780 sq.ft. finished basement. 2 Bedroom and 1 full bath on the Main floor, with 2 non-conforming rooms and full bath downstairs. Hardwood floors in the living room with herring features. Kitchen with eat-in dining area. Basement also offers a family room and Laundry area. Fenced yard, central air, double detached garage off the alley. Small garage for yard equipment. This home is a must see! # R8534

\$159,999

Approx. 10 acres. 3 bed/2 bath home with large shop, 1,800 sq.ft. updated, master bedroom opens to a patio. Kitchen is open to the dining area and living room with brick fireplace. Acreage includes a 40 x 60 concrete shop, large patio, garden shed, garden area, many annual flowerbeds, manicured lawn with mature trees. Irrigation and sprinkler system comes with the property. #R8528

\$395,000

310 14th St. SE, Sidney 406-433-4445
Or contact one of our agents at home:

Justin Jones, Broker/Owner406-480-9525
Jerrian Franzen, Broker406-478-3773
Dennis Wick, Agent406-480-1550
Terran Hillesland, Agent406-480-0129
Kristin Larsen, Agent406-480-5139

NICK JONES REAL ESTATE
www.NICKJONESRE.COM

FREELANCE PHOTOGRAPHER
The Roundup Newspaper is looking for a freelance photographer to cover area events and collect relevant info as needed. Pick up an application at The Roundup office located at 111 West Main, Sidney, or call 406-433-3306 for more information.

CARRIERS NEEDED
Need extra cash or want to get some exercise while getting paid? We have carrier routes available in most parts of Sidney. 406-433-3306 or fill out application at The Roundup, 111 W. Main, Sidney.

FREELANCE REPORTER
The Roundup Newspaper is looking for a freelance reporter to cover area events and write feature stories as needed. Pick up an application at The Roundup office located at 111 West Main, Sidney or call 406-433-3306 for more information.

FOR RENT LOOKING FOR SPACE FOR YOUR BUSINESS?
We have several retail/office space units available for rent in downtown Sidney. All utilities pd., free internet, cellphone booster, in-house restaurant (Mucho Si). Units may be remodeled to fit your needs. If interested call Linda at 406-489-1945 or see at 102 N. Central Ave.

FARM & RANCH FOR SALE
1990 18 foot 5th wheel Kiefer stock trailer, new tires. 1980 IH 540 manure spreader, very good shape. 701-842-2013.

SIDNEY FEEDS SALT SALE
Redmond block and bagged salt. Sweet Pro feed supplements and Redmond Salt products. For the best for your cattle and horses, call 406-488-4338.

The Roundup Help Wanted

The Roundup Newspaper is looking for a freelance reporter to cover area events and write feature stories as needed. Pick up an application at The Roundup office located at 111 West Main, Sidney or call 406-433-3306 for more information.



Ranch For Sale
Richland County, Montana
20 miles south of Sidney, MT on Highway 261

5060 Acres Total
3780 acres deeded. 1280 acres states leases to transfer with ranch. 260 +/- acres tillable in Hayland. Annual Taxes: \$4,620 (2016)

\$3,500,000

Excellent Improvements & Well Watered
Cattle & machinery can be purchased from seller

For Additional Information Contact Roger Cymbaluk
Basin Brokers, Inc. • PO Box 456 • 106 Main Street
Williston, ND 58802-0456 | 1-800-572-5560 • 1-701-572-5560

For Sale by Bid– Digger Truck

McKenzie Electric Cooperative, Inc. has the following digger truck for sale by sealed bids. This is a 1995 GMC C7H042 Digger with 128,120 miles.


Sealed Bids are due on Monday, November 27th at 4:30 PM to Jamie Cross. To see this truck, please ask for Jim or Brandon at the MEC office at 3817 23rd Avenue NE, Watford City, ND or call 701-444-9288 with questions.

MEC hereby disclaims any warranties, expressed or implied, of merchantability or fitness for a particular purpose. This property is being sold on an "as is" basis.

Seller reserves the right to reject any and all bids.

Bids can be mailed to:

McKenzie Electric Cooperative, Inc.,
Sealed Bid
PO Box 649
Watford City, ND 58854-0649



A step in the right direction...

For personal service on all your home loan needs, call Cheryl or Julia today!

With over 50 years of combined real estate lending experience, Cheryl and Julia are now serving Dawson County and Wibaux County home loan purchases and refinances out of our Sidney bank location.

APPLY ONLINE ANYTIME AT STOCKMANBANK.COM

Stockman Bank
Montana's Brand of Banking

301 West Holly Street
Sidney: 433-8600

stockmanbank.com

©2017 Stockman Bank | Member FDIC



Cheryl VanEvery
433-8605
NMLS ID# 523475



Julia Hill
433-8618
NMLS ID# 403732

Join our team! Job Opportunities

Certified Nurse Assistant Extended Care	Lodge Resident Assistant
Clinic Receptionist - Float	MDS Coordinator - ECF
Food Service Cook Utility Worker	Medical Staff Informatics
Information Systems Technician Project Lead	Personal Assistance Aide
Laboratory Medical Technician/Medical Laboratory Technician	Registered Nurses Acute Care CCU Clinic Extended Care OB Surgery
LPN Clinic Extended Care	Retail Pharmacy Support Staff
	Surgical Scrub Technician

 **SIDNEY HEALTH CENTER**
Exceptional Care for Life

 **TOP 100**

BENEFITS: Health insurance • Generous paid leave • Competitive pension plan • Flexible spending accounts • Voluntary dental, vision, critical illness and accident insurance • Life and AD & D Insurance • Hospital and Fitness Facility Discounts

For additional information or to apply online, please visit our website or contact:
Human Resources • Phone: (406) 488-2571 • HR@sidneyhealth.org
216 14th Ave SW • Sidney, Montana

Visit Our Website at: www.sidneyhealth.org

FOR SALE
Portable corral panel trailers. Continuous fence 5 bar or 6 bar 20 foot sections. Gates made out of 2" pipe. Corner post station braces. Call for more information, 701-770-2260.

VERMEER HAYING EQUIPMENT
See us today for all your haying & feeding equipment, sweeps & farm oil. Anderson Vermeer Sales & Service. Open Mon.-Fri., 8 a.m-5:30 p.m. 701-828-3358 or 701-828-3482 (after hrs.). Alexander.

96 KUBOTA L2900 GST 4WD
Tractor, loader, backhoe, heavy duty forks, 796 hours, \$3000. 406-578-4333.

BOER GOATS FOR SALE
Been with a buck for 45 days, due in January, good for 4-H projects, up to date vaccinations, \$150 each. 406-769-7328.

SERVICES MOVING? TOO BUSY TO DEEP CLEAN? NEED PAINTING?
Call 406-489-7289 for free estimates.

AIRCRAFT BUYING, SELLING AND APPRAISALS
Aircraft buying, selling and appraisals? Call Sidney Air Service, Inc for sales and acquisitions! Call 406-480-2024, ask for Barry.

PILOT SERVICE
You buy it we fly it. Single engine, multi engine, turbine. Aircraft management service also available. Call 406-480-2024, ask for Barry.

ROUND OR RECTANGULAR TABLES & CHAIRS FOR RENT
Parties, weddings, get together. Ultimate Showdown Assoc. Located at Hefty Seed Co. South of Sidney, has tables & chairs for rent. Will deliver. Call 406-488-4338.

FOR SALE PIZZA OVEN
2 deck commercial gas pizza oven, lge, free standing, \$2,000. 406-480-7279.

1995 GMC YUKON, 1993 CHEVROLET PICKUP
4x4 winter, 1995 GMC Yukon, 201,000 miles, all original except brakes and shocks, uses and leaks nothing, no dents or rust, dependable, \$3,750 or best offer. 1993 Chevrolet 1/2 ton 4x4, short box pickup, 247,000 miles, no dents, recent motor and transmission, no leaks, \$3,750 with propane unit or \$2,900 without, dependable. Must sell best offer. 701-744-5729.

PICKUP TOPPER; WOOD CHIPPER
Topper 6 1/2', fits 2006-2007 Ford pickup, \$400; DR Wood Chipper, ten hour use, \$1,500. Call 701-744-5329.

MISCELLANEOUS HEALTH
If you had an IVC filter placed for blood clotting, between 2010-present time, you may be entitled to compensation. Call Attorney Charles H. Johnson, 1-800-535-5727.

Happy Thanksgiving From: The Roundup
In order to spend the Thanksgiving Holiday with friends & family, we will be closing on Thanksgiving Day & Friday, November 24. Advertising Deadline is 4pm Wednesday, November 22.

111 West Main • Sidney, MT
406-433-3306 • 1-800-749-3306

Speech, Drama & Debate Team Competes in Billings



Kyla Carlson and Atlas Hill

The Sidney High School Speech, Drama & Debate Team travelled to Billings this weekend participating in the Eastern Opener. Competing against 18 Schools from AA,A,B & C, the Drama Team finished 3rd overall in Sweeps, with freshman Kyla Carlson placing 8th and Senior Atlas Hill placing 1st in Dramatic Solo. The team travels to Miles City next week. (Photo by Christy Pierce)

Annual Parade of Trees November 24th

The 15th Annual Parade of Trees will take place Friday, November 24 at the MonDak Heritage Center in Sidney, MT. Viewing starts at 3 p.m. with the auction commencing at 5 p.m. Jeremy Norby will be the auctioneer.

This joint fundraiser for the Boys and Girls Club of Richland County and the MonDak Heritage Center benefits youth programs at each facility.

Individuals, organizations and businesses are encouraged to decorate a Christmas tree or wreath and bring it to the MDHC between November 14 and 21. There will also be special ornaments for sale with the proceeds helping to purchase items for the Boys and Girls Club's new home.

Trees will stay at the MDHC until after their Christmas event and be available for pickup December 5 – 8.

Plan now to attend this fun event, take home a fully decorated tree, and help out the youth in our area.

Meat Madness Nov. 18

Submitted by Daniel Farr

The Sidney Eagle Foundation had its beginning in 2001 with its first major project, bleachers and the announcer's booth at Swanson Field. Since that time, the Eagle Foundation has continued to help fund numerous K-12 school projects through fund raising and with generous giving from our school community. A project that remains unrealized is the construction of a Concessions area and Restroom Facility on the northside of Swanson Field. This facility serves the community as well as area schools for hosting of district/divisional track meets and other community events.

At present, the Foundation has approximately \$30,623.35 raised and set aside for this project and this year, the Eagle Foundation is kicking-off a campaign with our corporate sponsor, Mid-Rivers Communication to see this projected completed. Inter-

state Engineering of Sidney has provided the Foundation with an estimated cost of \$187,000.

The kick-off event is "Meat Madness" and will be held Saturday, November 18th at the Event Center. Meat Madness is a spin on the turn of the century beef-steak events that involved a lot of meat and bread and of course, No Fork, No Knives and No Spoons. Through the support of our primary sponsor, Mid-Rivers Communications, you will be provided with a dinner that includes beef, chicken, pork and potatoes, veggies and dessert for a mere \$40 per person with all proceeds going toward the project.

The event will begin at 6:00 PM with a social hour and dinner to begin at 6:30 PM. Included in the evening is live music provided by Stumbling Free of Helena, Montana and both live and silent auctions. The live auction will include ½

a beef, cut and wrapped donated by Steinbeisser Farms, diamond stud earrings from John Stockhill Jewelers, a Henry Golden Boy 22 donated by DTF Educational Consulting in cooperation with High Caliber Sports, a 70 quart Pelican Cooler, a reclaimed wood and tin bar, and a week stay at a beautiful condominium at Whitefish Mountain. The silent auction will contain a variety of items donated by local business.

Come join Mid-Rivers Communications and the Eagle Foundation on November 18th for a great evening of dining, dancing and fun for a great cause. Tickets can be obtained at Stockman Bank, Central School, the Sidney Area Chamber of Commerce and Agriculture, and John Stockhill Jewelers. Join in the Madness on November 18, 2017.

Bring This Coupon In For An Oil Change

Includes:
• Labor • Oil Filter
• Up to 8 Quarts of Synthetic Oil
• Windshield Washer Fluid
• Top-off
• 27 Multipoint Inspection
• All Makes & Models

\$34.95* Expires 12-31-17

CERTIFIED SERVICE
Regular Price \$39.95

*SEE DEALER FOR DETAILS. OIL CHANGE PRICE EXCLUDES DIESEL ENGINES

703 S. CENTRAL • SIDNEY, MT | WWW.GEMCITYMOTORS.COM | 406-433-3120

SHOP SIDNEY



Winners Shop In Sidney

Win a \$50 Gift Certificate

Each Week 'Til Christmas
Register At The Sidney Firms Listed On This Page

But Wait... There's More

- Get a 0% Loan of \$500 to \$1000
- Register to Win up to \$3,000 in Chamber Bucks AND THERE'S NO SALES TAX

Sidney's got it!



Farm & Home



John Stockhill Jewelers



ElectricLand



Eagle Country Ford



High Caliber Sports & C4 Athletics



Reese & Ray's IGA



Reynolds Market



Tri-County Implement

COMFORTABLE LIVING!

2015 Crest 8814 | 16' x 80', 3 bed/2 bath



\$51,995

plus setup & tax where applicable

Useman Homes
YOU'RE HOME, NOW.

Mon: 9am - 7pm • Tues-Thurs: 9am - 6pm
Fri: 9am - 5:30pm • Sat: 9am - 4pm
2308 West Front St. Williston, ND | 701-572-2590

FREE DELIVERY WITHIN 100 MILE RADIUS!



Let Us Help Plan Your Auction

The Steffes Way.

Selling Land & the Equipment to Farm It Since 1960



Interested in a farm retirement or equipment auction, timed online event, or land auction? Give us a call to help you through the process.

Our Winter 2017 Market Update is now available!

Inside we share our market experience, observations, and guidance to what lies ahead regarding land and ag machinery. Download a copy today at SteffesGroup.com

406.204.7002 | SteffesGroup.com

over
45
AUCTIONS
this Fall

INCLUDING

Aglron

Consignment
5 Events
in 4 States

View Complete
Auction Listings at
SteffesGroup.com



Sidney Health Center Recognized For Improvement In Patient Care

Sidney Health Center was awarded the Montana Rural Healthcare Performance Improvement Network's Quality Improvement Award for its work on Emergency Transfer Communication. Awards were announced during the general session at the MHA Annual Convention held in Billings, MT this fall and the award was received at a recent Performance Improvement Network area meeting.

The Montana Rural Healthcare Performance Improvement Network (PIN) is a voluntary membership of 48 critical access hospitals throughout the state. Through this Network, member hospitals are able to benchmark their performance with their peers on a variety of financial, utilization and direct patient care measures that encourage safe, effective, patient-centered care delivery in even

the most remote communities of the state. PIN quality of care measures are based on national benchmarks, but are tailored to reflect the realities of the state's rural population.

Sidney Health Center has demonstrated a commitment to its community and the region it serves through its involvement with the MT Rural Healthcare PIN. Throughout the last year, PIN members worked in areas focused on four core improvement areas; patient satisfaction and engagement, transitions of care from the emergency room, emergency room stay times, and immunizations for health-care workers. Award winners are required to demonstrate measurable improvement in one of the previously mentioned quality of care focus areas over the previous year and show consistent participation in the PIN's data programs.

Applicants are also required to demonstrate an active and leading role in supporting PIN quality improvement efforts by participating in PIN events and sharing with peers throughout the state.

The mission of the MT Rural Healthcare PIN is to develop and provide a collaborative support system which will enable small rural hospitals to have the ability to deliver quality care and achieve customer satisfaction. PIN activities are supported by the Medicare Rural Hospital Flexibility (Flex) Program, which provides funding to spur quality and performance improvement activities, stabilize rural hospital finance and integrate emergency medical services (EMS) into existing health care systems. The program encourages the development of cooperative systems of care in rural areas to increase efficiencies.



Pictured with the PIN Award and representing the Sidney Health Center Emergency Department are Pam McGlothlin, RN, Director of Nursing; Peggy Kopp, RN, Quality Improvement Director; and Renee Williams, RN, Charge Nurse.



2017 CHEVY

CLOSEOUT

THE 2017s ARE GOING FAST!

20%^{} BELOW MSRP**

on most 2017 Impala, Sonic, Spark, Malibu, Cruze and Trax models in stock**



BUY FOR

3.9% APR*

FOR 72 MONTHS

2017 CHEVROLET SILVERADO 1500 CREW CAB LTZ 4x4

\$52,040

After \$6,025 Price Reduction and \$1,500 Cash Allowance

Stk# C8192. MSRP \$59,565. Pearl Tricoat, Navigation, Block Heater,LTZ Plus Pkg, High Desert Pkg. Plus tax, title, license and \$199.00 doc fee.



BUY FOR

3.9% APR*

FOR 72 MONTHS

2017 CHEVROLET TAHOE PREMIER 4x4

\$65,158

After \$6,867 Price Reduction

Stk# C8085. MSRP \$72,025. Pearl Tricoat, 22" Wheels and Tires, Head-Up Display, Splash Guards. Plus tax, title, license and \$199.00 doc fee.

*Available to qualified buyers.3.9% APR for 72 Months: Payments based on \$15.60 per thousand dollars financed. May require down payment. Financing thru GM Financial. Not available with special finance, lease and some other offers. Take delivery by 11/30/17.

FIND NEW ROADS™

WillistonAuto.com



CERTIFIED SERVICE



COMPLETE CARE
Your Comprehensive Owner Benefit Program. See dealer for details.

** Excludes select base trims. Offer includes price reduction below MSRP and cash allowance. Not available with special finance, lease or other offers. Take delivery by 11/30/17.



WE ARE PROFESSIONAL GRADE



0%[†] APR

72 MONTHS

ON SELECT MODELS!

On Approved Credit.



2017 GMC CANYON EXTENDED CAB SLE 4x4

\$1,750

BELOW MSRP

\$1,750 Price Reduction

SALE PRICE **\$35,100**

OR \$33,350 After \$1,750 GM Trade-In Allowance

MSRP of \$36,850. Stk# G8425. Tax, title, license and \$199 doc fee extra. Expires 11/31/17 †2.99% APR for 72 Months available to qualified buyers. Payments based on \$15.19 per thousand dollars financed. May require down payment. Financing thru GM Financial. Not available with special finance, lease and some other offers. .



2017 GMC ACADIA DENALI AWD

\$4,385

BELOW MSRP

\$2,000 GMF Cash *
\$2,385 Price Reduction

SALE PRICE **\$46,900**

OR \$49,784 After \$2,500 GM Trade-In Allowance

MSRP of \$51,285. Stk# G8255. Tax, title, license and \$199 doc fee extra. Expires 11/31/17 †2.99% APR for 72 Months available to qualified buyers. Payments based on \$15.19 per thousand dollars financed. May require down payment. Financing thru GM Financial. Not available with special finance, lease and some other offers. .



2017 GMC SIERRA 2500HD SLT CREW CAB 4WD

\$4,216

BELOW MSRP

\$2,500 GMF Cash *
\$3,716 Price Reduction

SALE PRICE **\$52,284**

OR \$49,784 After \$2,500 GM Trade-In Allowance

MSRP of \$56,500. Stk# G8231. Tax, title, license and \$199 doc fee extra. Expires 11/31/17 †3.90% APR for 72 Months available to qualified buyers. Payments based on \$15.60 per thousand dollars financed. May require down payment. Financing thru GM Financial. Not available with special finance, lease and some other offers. .



2017 GMC YUKON XL SLT 4x4

\$3,596

BELOW MSRP

\$3,596 Price Reduction

SALE PRICE **\$60,924**

OR \$58,424 After \$2,500 GM Trade-In Allowance

MSRP of \$64,520. Stk# G8390. Tax, title, license and \$199 doc fee extra. Expires 11/31/17 †3.90% APR for 72 Months available to qualified buyers. Payments based on \$15.60 per thousand dollars financed. May require down payment. Financing thru GM Financial. Not available with special finance, lease and some other offers. .

† Expires 11/31/17. Available on select 2017 Yukon XL vehicles. Financing at 0.00% APR for 72 Months available to qualified buyers. Payments based on \$13.89 per thousand dollars financed. May require down payment. Financing thru GM Financial. Not available with special finance, lease and some other offers. .

OVER 124 PRE-OWNED VEHICLES PRICED TO SELL!

CREDIT ISSUES? WE CAN HELP GET YOU APPROVED!

All Applications Accepted. Apply Online Now or Call Grady Thorstad Today!

WillistonAuto.com



CHEVROLET



WE ARE PROFESSIONAL GRADE



Cadillac



BUICK

Pictures for illustration only. Vehicles subject to prior sale due to advance advertising deadlines. Offers good thru October 31 2017. Tax, title, license and \$199.50 doc fee extra.

1801 2ND AVENUE WEST, WILLISTON, ND | 800.888.2927 | 701.577.2927

Change Your Impact Series

Part 4: A Youth's Perspective

By Richland County Partnership For Promise Coalition

Our school superintendents, administrators, and teachers have a great deal of responsibility to our children. Year round they provide opportunity for our children to learn, grow, adapt, excel and succeed; not just in the academic field, nor just in athletic areas either. The school has also become the place to learn good behaviors, positive self-image and the six pillars of character: TRUSTWORTHINESS, RESPECT, RESPONSIBILITY, FAIRNESS, CARING, and CITIZENSHIP. In building our youth using these pillars, the school invariably is involved in prevention of risky behaviors like alcohol and drug use. Last week was Red Ribbon Week throughout the Nation and Richland County. All the local schools participated in some way to bring awareness to the risks associated with underage drinking and drug misuse. The kids participated in a variety of activities and listened to many tragic stories from local and distant representatives in hopes that some of these prevention efforts will impact some of the youth positively. But how do we know that these efforts are working? How do we as parents, as school employees, as public health and safety officers know that we are making a definitive impact?

Every two years, in the spring, the majority of youth in Montana schools take a risk assessment from the Department of Public Health and Human Services (DPHHS) that assists in determining the answers to those questions. Here is an excerpt from the state letter that is going out to every superintendent of each school in Montana this next week. "Prevention works

when you understand the factors that raise a student's risk for substance misuse (risk factors) and those that may offer some degree of protection from these risks (protective factors) and then use this knowledge to design interventions aimed at steering students away from substance misuse." The Montana Prevention Needs Assessment (PNA) is anonymous and voluntary to the youth and the schools but the information learned from this assessment is used to allocate federal prevention funding as the state of Montana does not provide prevention dollars. This survey provides valuable information on a county level that helps health departments, prevention organizations like District II, schools, other community clubs and organizations, and us as parents see how our youth community views aspects of alcohol and drug misuse, bullying, school violence, and internet related sexual advances. The survey also identifies protective factors like school activities, community events, home life, social interactions, etc. The Montana Prevention Needs Assessment provides a unique look at each county in Montana allowing prevention and risk management to occur on a local and customized level.

Each of our children will take this anonymous survey in the spring so take time to talk to your child about these risk factors and help them understand how the six pillars of character are reflected in their choices.

For more information about the Montana Prevention Needs Assessment visit: <http://dphhs.mt.gov/amdd/SubstanceAbuse/CDDATA/PNADATA/2016PNA-Data#505496058-county-data>, for specific county data from the 2016 survey results.

Your local health department and District II Alcohol and Drug Program would also have that information available.

Challenge yourself to Talk It Up & Lock It Up. Talk to youth about what this information means to you and take precautions by counting and locking up your alcohol. It is that simple to make positive impacts on Richland County youth! Send your comments to the Editor to further this conversation.

Next time: Change Your Impact Series, Part 6, Support youth, but not in the way you think!

Save Time & Money With Great Communication!



Handhelds
TK-2402
Handheld 5 watts w/scan
\$289



Mobile Radios
50 to 110 watts •
16 to 127 channels •
small & easy to use •

Starting at \$359.00

Authorized **KENWOOD** Dealer

Call Larry Today At...
ADVANCED COMMUNICATIONS
"Your communication headquarters"
Mobile Radios • Satellite Telephones
Just North of McDonald's • Sidney, MT | 406-433-1659 • Toll Free: 1-866-433-1659

Energy Roundup

Company's First International Oil Shipment Targeted for November

OKLAHOMA CITY, Oct. 17, 2017 /PRNewswire/ --



Continental Resources, Inc. (NYSE: CLR) (the Company) today announced its first-ever sale of Bakken oil specifically for delivery overseas. The Company has sold 1,005,000 barrels of Bakken crude oil for November delivery to Atlantic Trading and Marketing ("ATMI"), which intends to export the oil to China.

Daily sales transactions of 33,500 barrels per day in

November will take place in Cushing, Oklahoma. ATMI then plans to transport the oil for loading on tankers at Texas ports.

"This is a historic day for Continental and begins a new chapter in our long-term strategy to establish multiple international markets for American light sweet oil," said Harold Hamm, Continental's Chairman and Chief Executive Officer. "This new normal was created by the American shale energy revolution and the lifting of the 1977 crude oil export ban. We expect to see many similar industry transactions in coming months and years."

In December 2015 the



U.S. lifted its ban on oil exports, allowing foreign sales to be transacted without a license. Oil exports have grown steadily in the past two years, primarily to foreign refineries configured specifically to process light sweet crude oil. "We recognized back in 2015, when we were working to lift the export ban, that American light sweet oil would be a good fit for these refineries, especially in Europe and Asia," Mr. Hamm said.

"The current \$6 discount to Brent should not exist, given the consistency and high

quality of WTI, as well as relative shipping costs," he said. "Stabilized U.S. production and increasing industry sales of American crude to international markets will drive down U.S. inventories, correcting much of the recent disparity between Brent and WTI prices. Modern modes of transport in the crude oil sector today eliminate price disparities between markets and allow free markets to work."

He noted that Continental continues to develop additional international markets for its light sweet oil.

Guest Editorial: Honoring Our Veterans

By U.S. Senator Steve Daines

One of the greatest privileges of serving Montana in Washington, D.C. has been hearing the most admirable stories of Montanans who have fought for our nation all across the globe.

Dr. Joseph Medicine Crow served as an Army scout during WWII and fulfilled the requirements to become a war chief. Ben Steele served in the U.S. Army Air Corps and was captured by the Japanese – he was a prisoner of war for 1,244 days during WWII. David Thatcher took part in the Doolittle Raid and was awarded the Silver Star. If you've ever seen the movie, "Thirty Seconds Over Tokyo," you'll have seen Robert Walker play the part of Corporal Thatcher.

This year I led a bill in the Senate to designate three VA facilities after these Montanans, to preserve their legacies and serve as a reminder of our nation's heroes. We owe a debt of gratitude to men and women like Dr. Joseph Medicine Crow, Ben Steele, David Thatcher and many others.

Each November 11th we gather from all corners of our state to say thank you to our country's veterans for their selfless service to defend the freedoms that we hold dear. And we've done so for nearly a century. The first Veterans Day was celebrated on November 11, 1919, the first year anniversary of the end of WWI.

As the son of a U.S. Marine, I have long had an appreciation for those who serve our nation in uniform. My father enlisted in the 58th Rifle Company in Billings in 1957 and it was through him that I first learned of the sacrifice and courage displayed by those who serve in our armed services.

They've saved lives, provided humanitarian relief and payed the price of freedom for you and me. They are America's best and most honored. They are our veterans. They're all around us every day and on this day, we honor them.



E M SERVICES LLC
Main Office: 701-842-6309 • Fax: 701-842-6319
305 12th Street SE, Watford City, ND
3001 Red River Drive, Sidney, MT
5060 Bennett Industrial Dr. Williston, ND
2522 132nd C Ave NW Arnegard, ND
www.emservicesus.com

We Are Your Oilfield Supply Headquarters!

Down Hole Sucker Rod Pumps
Tubing Anchors • Gates
Hydraulic Hoses & Belts
Balon Ball Valves • Line Pipe • Tubing
Fittings • Norris Sucker Rods

Richland Pump & Supply

Stanley, ND
701-628-8706
Sidney, MT
406-488-8706 • rpands@midrivers.com

Count on **Tractor & Equipment Co. and T&E The Cat Rental Store**, for all your equipment buying and rental needs. From concrete saws to heavy construction equipment, we offer products from Cat® and other leading brands to meet most jobsite needs.

Lindsay Smith
406-696-0714

T & E 

Customer Service is Our #1 Priority

BORDER STEEL AND RECYCLING, INC.

Construction Materials • New Steel • Aluminum & Stainless

Brady Smelser • Tim Mulholland • Kelly Moody • Bret Smelser • Ernie Gawryluk • Ken Syme			
Sidney 35002 CR 123 406-433-7737 1-855-810-2995	Glendive 2703 W. Towne St. 1-800-423-5219	Williston 13896 W. Front St. 1-800-820-5493	Plentywood Hwy 16 East 406-765-2624

HURLEY'S OILFIELD SERVICES

- Porta Potties • Potable Water
- Sewer Systems • Loaders
- Communications • Backhoe
- Trucking • Skid Houses

Dispatch: 701-844-1234 | Fairview, MT

THE BUSINESS ROUNDUP
REACH 26,500 READERS IN THE ENTIRE MONDAK REGION
406-433-3306 OR 800-749-3306 ~ info@roundupweb.com

GO TO WWW.ROUNDUPWEB/DIRECTORY FOR DIRECT LINKS TO COMPANY WEBSITES & LOCATIONS

\$25⁰⁰/WK

For all your Farm/Ranch, Recreational, Residential, and Commercial needs.

MISSOURI RIVER REALTY

Alan Seigfreid
Amanda Seigfreid

Jim & Janice Knudsen 120 2nd St. N.E. • Sidney Mt. 59270
Broker/Owners (O) 406-433-3010 • (C) 406-489-3010
email: alans@midrivers.com
Website: www.missouririverrealty.com

TIMBER AUTO BODY

SAND BLASTING | WINDSHIELDS | ROCK CHIPS | FIBERGLASS
From semi's to compact vehicles, bring it in! We'll work on it!

2004 12th St SE • Watford City, ND • PO Box 592 • 701-444-2834

DOORBUSTN
Portables & Septic Service, LLC
Blaine Rogers, Owner

Office: (406) 433-7586
Fax: (406) 433-7586
PO Box 1083 Sidney, MT 59270
Service: (406) 489-9915

www.doorbustnportablessepticsservice.com

Customer Service is Our #1 Priority

Farm & Ranch Products & Construction Materials. New Steel, Aluminum & Stainless.

BORDER STEEL AND RECYCLING, INC.

Brady Smelser • Tim Mulholland • Kelly Moody • Bret Smelser • Ernie Gawryluk			
Sidney 35002 CR 123 406-433-7737 1-855-810-2995	Glendive 2703 W. Towne St. 1-800-423-5219	Williston 13896 W. Front St. 1-800-820-5493	Plentywood Hwy 16 East 406-765-2624

HOSE ASSEMBLIES WHILE YOU WAIT

MFCP MOTION & FLOW CONTROL PRODUCTS, INC.

Fluid Connectors • Industrial Hose • Seals
Hydraulics • Pneumatics • Automation
Filtration • Racor • Instrumentation

406.433.1590
After Hours 406.478.3116
Fax 406.433.1589

SIDNEY, MT
205 2nd Ave NE
WWW.MFCPINC.COM

Parker Store

YOUR COMPANY HERE



Michele Herres
Agent


MT Lic 26-03A1
ND Lic 34-03A1



State Farm
Providing Insurance and Financial Services

**AUTO • HOME
LIFE • BANK
HEALTH • BUSINESS**

216 S Central Ave • Sidney, MT 59270
Bus: 406-488-2400 • Fax: 406-488-2405
michele@herresinsurance.com




UNION GATEWAY AGENCY

*Your Insurance Team
Independently
Representing:*


~Life
~Health
~Medicare Supplement
~Medicare Part D
~Group Health
~Vision
~Dental
~Long Term Care

309 2nd St NW
Sidney MT 59270
phone 406-488-4366
fax 406-630-4433


www.uniongatewayinsurance.com



**BlueCross BlueShield
of Montana**



Aflac



vsp
Vision care for life

©2011 Vision Service Plan. All rights reserved. VSP and Vision care for life are registered trademarks of Vision Service Plan.



**Christmas
Sale!**

Boxed Beef Sticks
2½ lb. box (40-50 per box) **\$20**

Boxed String Cheese
(individually wrapped)..... **\$12**

Smokey Snack Sticks
16 oz. (11-12 per package)..... **\$12**

**Support your 4-H program
by planning now to place
an order when a member
contacts you or call 433-1206**

By popular request, Richland County 4-H Clubs will be taking orders through Nov. 15th for the same great tasting beef & cheese sticks offered during our Spring Citrus Sale. These will make great gifts for those hard-to-buy-for on your Christmas list!

Deliveries will be made the week of November 27th



Lunch Menus!

Sidney Schools

Thurs., Nov. 9: Lasagna, garlic toast, tossed salad, pears.

Fri., Nov. 10: Corn dogs, tater tots, mandarin oranges.

Mon., Nov. 13: Burritos, tossed salad, apple.

Tues., Nov. 14: Holiday dinner.

Wed., Nov. 15: Super nachos, peach cups.

Savage School

Thurs., Nov. 9: Philly cheese sandwich.

Fri., Nov. 10: Hamburgers.

Mon., Nov. 13: Taco hot dish.

Tues., Nov. 14: Turkey dinner.

Wed., Nov. 15: Ham and cheese.

Rau School

Thurs., Nov. 9: Chicken fried steak, mashed potatoes with gravy, green beans, pears.

Fri., Nov. 10: Biscuits and gravy, scrambled eggs, peach cups.

Mon., Nov. 13: Tater tot hotdish, green beans, fresh fruit, bun.

Tues., Nov. 14: Chicken burger, fries, carrots, fruit salad.

Wed., Nov. 15: Turkey, mashed potatoes with gravy, peas and carrots, mandarin oranges, pumpkin bar.

Froid School

Thurs., Nov. 9: Taco soup with beans, cornbread, applesauce, taco bar, milk.

Fri., Nov. 10: Chicken strips, rice pilaf, veggies, fruit, milk.

Mon., Nov. 13: Chili, cinnamon rolls, cheese sticks, milk.

Tues., Nov. 14: Chicken fajita salad, taco bar, fruit, milk.

Wed., Nov. 15: Salisbury steak, mashed potatoes and gravy, veggies, fruit, dessert, milk.

Bainville School

Thurs., Nov. 9: Pollo con crème, taco bar, tortillas, rice, beans.

Fri., Nov. 10: Carlee Azure Day! Chicken pot pie, steamed honey carrots, chocolate chip cookie.

Mon., Nov. 13: Shepherds pie, cheesy breadstick, fruit.

Tues., Nov. 14: Fajitas, taco bar, blueberries.

Wed., Nov. 15: Slush burgers, french fries, apples.

Richey School

Thurs., Nov. 9: Chicken alfredo, garlic toast, broccoli, mandarin oranges, milk.

Fri., Nov. 10: Enchilada caserole, dinner roll, applesauce, green beans, milk.

Mon., Nov. 13: Chicken fajitas, fresh veggies, fruit cocktail, milk.

Tues., Nov. 14: Goulash, steamed peas and carrots, pineapple, milk.

Wed., Nov. 15: Chicken burger, corn, peaches, milk.

Culbertson School

Thurs., Nov. 9: Hot pockets, salad, fruit, milk.

Fri., Nov. 10: Popcorn chicken, smiley potatoes, fruit, milk.

Mon., Nov. 13: Hot dogs, potato chips, fruit, milk.

Tues., Nov. 14: Chicken drummies, mashed potatoes and gravy, fruit, milk.

Wed., Nov. 15: Sloppy joes, fries, fruit, milk.

Lambert School

Thurs., Nov. 9: Chicken a la king, salad, fruit, milk.

Fri., Nov. 10: Slush burgers, chips, green beans, fruit, milk.

Mon., Nov. 13: Tuna noodle hot-dish, peas, buns, fruit, milk.

Tues., Nov. 14: Chicken patties, mashed potatoes, gravy, green beans, fruit, milk.

Wed., Nov. 15: Meatball subs, fresh veggies, fruit, milk.

Fairview School

Thurs., Nov. 9: Hamburger gravy over rice, green beans, apple-sauce, dessert, milk.

Fri., Nov. 10: No school.

Mon., Nov. 13: Hot dogs, gems, pears, milk.

Tues., Nov. 14: Chicken burgers, fries, pineapple, milk.

Wed., Nov. 15: Burritos, spanish rice, tropical fruit, milk.

Watford City School

Thurs., Nov. 9: Baked potato with toppings, steamed broccoli, mandarin oranges.

Fri., Nov. 10: No school.

Mon., Nov. 13: Cheesy breadsticks with marinara dipping sauce, green beans, grapes.

Tues., Nov. 14: Loaded nachos with toppings, corn, peaches.

Wed., Nov. 15: Pork chop, mashed potatoes with gravy, steamed carrots, dessert.

Alexander School

Thurs., Nov. 9: Super nachos.

Fri., Nov. 10: No school.

Mon., Nov. 13: Hot dog or brat, macaroni and cheese.

Tues., Nov. 14: Popcorn chicken bowl, mashed potatoes, corn.

Wed., Nov. 15: Swedish meatballs on rice, corn, garlic toast.

Soaring Eagle Program at High School

Students who are selected to be a “Soaring Eagle” are students who display positive school spirit and are supportive of fellow students, do his or her best academically, participate in at least one school activity, are considerate and respectful of others, are goal-oriented and are all around good students of Sidney High School.

Three students will be selected at the end of each month, beginning in October, from each of the four grades. Selections will be made by class officers and their advisors, for their grade, during the last week of each month.

Once students are selected, the list will be turned in to Miss Thiel or Mrs. Peters by the last school day of the month. Students will be acknowledged on daily announcements and in



The students selected for October are front (L-R) Gabe Hayes, Shae Roberts, Nicolas Trevino, Ali Merritt, Kadin LeFors and Morgan Slade. Back Row (L-R) Tierrany Trudell, Ben Brodhead, Kaelyn Volk, Lauren Beenken, Carter Hughes and Cammy Heck.

the The Roundup and or the Sidney Herald.
All selected students for the month will be eligible for a \$20 gift certificate drawing to a local business. Also, all selected students will receive a certificate and a treat.

Crime of the Week

By Richland County Crimestoppers

This week’s Richland County Crimestopper is asking the community to help in locating a dog that bit a 13-year old female as she was walking on 6th St. SE in Sidney at about 5PM on October 26, 2017. The Sidney Police Department received a report from Sidney Health Center that a 13-year old female had been brought to the hospital with a dog bite. Upon speaking to the victim, it was learned that she had turned off South Central Ave onto 6th St. SE and was walking eastbound. The victim stated that she had been walking for a few minutes on 6th St. SE when she saw a brown colored dog, that she believed was maybe a pit bull in a yard next to the sidewalk she was walking on. She did not notice the dog coming up behind her and was bit by the dog on the back of her leg. The dog then ran off and the victim did not see where the dog went. She then went home and was taken to the hospital by her family. The bite caused puncture wounds and bruising to the back of her right leg. The victim is not familiar with the area but feels she or the person that was with her could identify the dog if she saw it again.

It is very important that this dog is located so that it can be determined if the animal has had it proper rabies shots. Crimestoppers has been asked by the Richland County Health Department and Sidney Police Department to help located this brown dog that may be a pit bull type. The dog may be owned by someone living on 6th St. SE or close to the area. The victim will have to start a series of shots if authorities are unable to determine if the dog is current on it shots. Please contact Crimestopper, the Sidney Police Department at 406-433-2210 or the Richland County Health Department at 406-433-2207.

As with any investigation it is possible that a member of the public saw or heard something that may assist investigators with the investigation of this matter. Crimestoppers believes that someone may have information on the brown dog that bit this young female walking on 6th ST. SE. If you have knowledge or information on any crimes in Richland

County, contact CRIMESTOPPERS by calling 433-6666 Monday through Friday between 8:00 AM and 5:00 PM. You can also contact Crimestoppers in Richland County anytime (24/7) by going to our New Crimestoppers website at www.richlandcs.com then going to Submit a Web Tip or by texting the code “CSRC plus your message to: 274637 (CRIMES). You can also contact the Richland County Sheriff’s Office at 406-433-2919

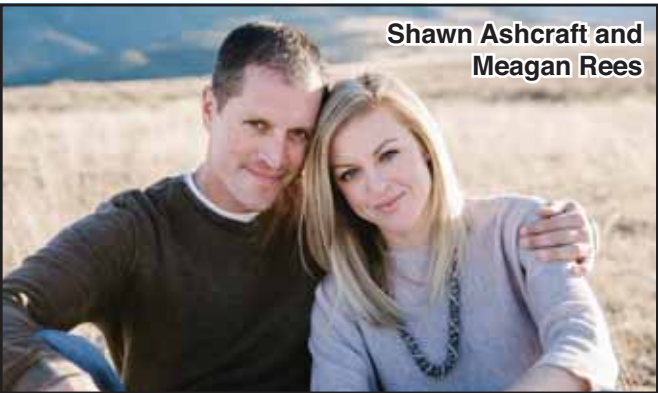
The new Richland County Crimestoppers restarted in 2013 has already paid individuals providing information to law enforcement that led to the arrest of those committing crimes in Richland County.

Richland County Crimestoppers has a new Facebook page, please check it out.

** Check the Wanted Person section of the Richland County Crimestoppers website each week for those wanted in Richland County. At least one new entry will be posted each week with photo if available. Crimestoppers is asking for information that would help lead to the arrest of those with an active warrant in Richland County.

Remember: As with all Crimestoppers tips, calls are not recorded and the call will remain confidential. You may be eligible for a cash reward of up to \$1000.00 for information concerning this case or any other serious crime.

Rees-Ashcraft Announce Engagement




Shawn Ashcraft and Meagan Rees

Al Rees and the late Kim Rees of Billings are proud to announce the engagement of their daughter Meagan Rees to Shawn Ashcraft, son of Johnny and Lynda Ashcraft of Kalispell. Meagan is a Financial Analyst at PayneWest Insurance in Billings and Shawn is an Education Professional. Meagan is also the granddaughter of Jim and Maxine Stoner and the late Don and Roxy Rees of Sidney. Shawn is the nephew of Dr. Jimmie and Kay Ashcraft of Billings, former Sidney residents. The couple are planning a May 2018 wedding.

**NOW ACCEPTING
NEW PATIENTS**

VETERANS DAY SPECIAL • THURSDAY, NOVEMBER 9TH

**FREE
Cleanings
and Exams
to ALL
Veterans!**



*Celebrating Excellence With
Over 20 Years of Experience*

**Healthy Smiles
Dental &
Orthodontics**

Services by a General Dentist

203 2nd Ave SW • Sidney, MT | 406-433-7645 | Mon-Thurs: 8am - 5pm • Fri: 8am - 2pm

**The Easiest Place
For Kids to Get Beer**

..is right next to the milk.

TALK IT UP, LOCK IT UP!

A message from District II Alcohol & Drug Prevention

