

The Roundup

PRSR STD
U.S.
POSTAGE
PAID
The Roundup
ECRWSS
Postal Customer

Phone (406) 433-3306
Fax (406) 433-4114
E-mail address:
info@roundupweb.com
www.roundupweb.com

Business Office:
Located at 111 West Main
Sidney, MT

Mailing Address:
P.O. Box 1207
Sidney, MT 59270

Wednesday, September 23, 2020

Volume 46 • Number 33

Grand Opening For Watford City Fox Hills Elementary School Set For Sept. 25

By Anna Dragseth

On Friday, Sept. 25, at 5 p.m., there will be a grand opening and ribbon-cutting ceremony for the new Fox Hills Elementary School, 2610 Wolf Den Parkway, Watford City. This event will recognize the efforts and support that has been put into the making of this building while providing a tour of all of the state-of-the-art aspects of Fox Hills Elementary School.

Although the McKenzie County School District No. 1 is excited to have a grand opening of the new Fox Hills Elementary School, it will be different than initially planned, due to COVID-19 and CDC guidelines. "The open house will follow health and safety guidelines and social distancing as much as possible; tiered scheduling is being considered to ensure the number of attendees will be limited," stated Dr. Steven Holen, Superintendent of Schools, McKenzie County District No. 1.

The details of the open house are still being finalized, but the general idea is to share the building with the community and celebrate its opening.

In addition to the event, the McKenzie County School District No. 1 staff is also planning on creating a virtual tour, to give more community members an opportunity to view the building." The current situation makes it



Photo submitted.

somewhat challenging; however, we believe it is important for the community to see the new building and to celebrate its completion and value to our school district," explained Holen.

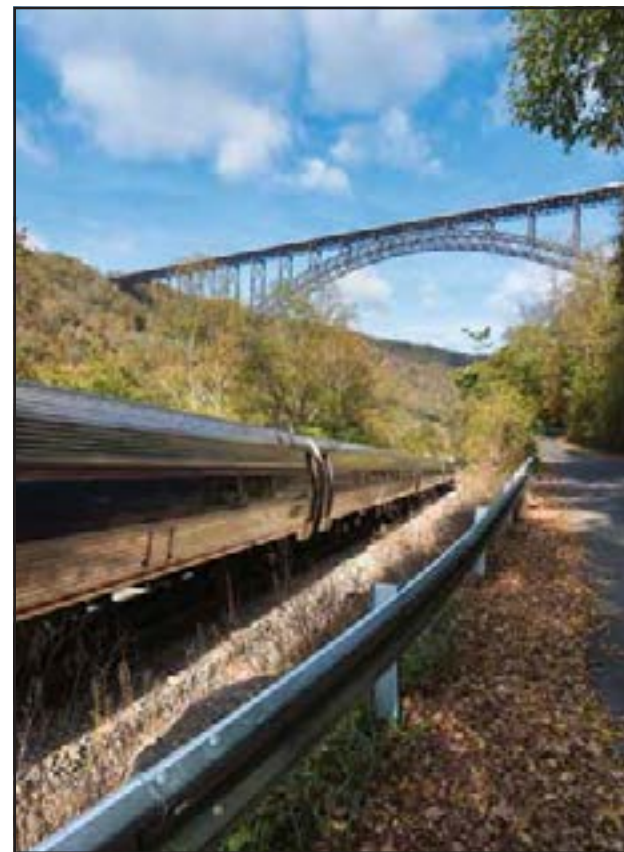
Since the start of the school year, Sept. 8, this two-story 90,000 square foot building has effectively addressed the overcrowding situation in Watford City's current elementary school. Holen explained that this new building has been beneficial, especially with the current COVID-19 pandemic situation. "We have approximately 450 students in each of our two elementary school

buildings, which provides some efficiencies for families and bus transportation. The class sizes are very positive this year at the elementary level, with classes averaging below 20 students in each of the buildings. The new elementary school allowed the school district to reconfigure all grade levels to the desired format of two K-5 buildings, a 6-8 middle school, and a 9-12 high school," added Holen.

He also said that the environment has been a "vast improvement in distributing the grade levels more equitably and provides a positive educational environment

for all grade levels K-12. The attendance boundary for the elementary level is new to our community. However, the enrollment split between both elementary schools is almost equal and successful regarding the implementation of our first boundary line. The overall impact on all grade levels K-12 is significant with this new building as it changes our environment for the current elementary, middle school, and high school and brings the overall facility plan developed several years ago to reality."

Amtrak And COVID-19



By Tieheena Lemerond

Due to the COVID-19 pandemic and the decrease in travel demand, Amtrak will be making changes to their Long-Distance train frequencies in October. Many routes will be changing from daily service to tri-weekly. Those routes changing are California Zephyr, Capital Limited, City of New Orleans, Coast Starlight, Crescent, Empire Builder, Lake Shore Limited, Palmetto, Southwest Chief and Texas Eagle.

Effective the week of Oct. 19, the Empire Builder route that services Williston and travels between Chicago and either Spokane or Portland/Seattle will change from a daily route to three times per week. The Empire Builder makes several stops throughout North Dakota along its route.

On Sept. 9, Amtrak President & CEO Bill Flynn testified before the U.S. House Subcommittee on Railroads. He advised the committee that the first five months of fiscal year 2020 Amtrak was in a stronger position than its soon to be 50-year history. Then, COVID-19 hit and within a matter of weeks, "Amtrak's ridership plummeted by 97%."

Amtrak has taken many actions to minimize health and safety risks to their customers and their employees, but the financial impact has been more than significant. Flynn advised that Amtrak's revenue loss from ticket sales would be \$1.266 billion. Because of this, Amtrak has been forced to make several cost-cutting decisions. One of the more critical decisions has been adjustment to train service.

Flynn states, we "now anticipate needing up to \$4.9 billion in funding to operate and invest in our network, support our partners, and address various congressional concerns like avoiding employee furloughs and maintaining daily long distance service."

Amtrak has stressed that the long-distance frequency adjustments will be temporary. Their intention is to re-store service frequency to previous levels when ridership returns; however, they will evaluate their numbers in Feb. 2021. They anticipate the route cuts will last until at least June 2021.

In a Q&A after Flynn's testimony, Amtrak representatives assured the subcommittee they will follow the direction of Congress and they made it clear they are seeking funds to keep the current service levels intact. Like the airlines and others who received CARES Act funding in the spring, the CARES Act monies Amtrak received will run out at the end of September.

Rail Passengers Association:

On Sept. 2, 2020, the Rail Passengers Association (RPA) put out a "Push to avert service cuts to Amtrak and public transit" letter urging passengers to keep the pressure on Congress to pass an emergency relief bill, including \$5 billion for Amtrak and \$32 billion for transit.

"Many passenger rail advocates believe this is the beginning of the end for Amtrak's long-distance network across the country," states RPA in their letter. They are requesting passengers email their Congressional delegation with their story of how these cuts would affect them and/or their community.

Questions for RPA should be directed to narp@narpail.org or by calling 202-408-8362.

Frontier Tires & Glass In Sidney Now Open

Frontier Tires & Glass, Sidney, is now open for business. The new owners are Bryce Dinkelman, Brandon Batty and Joseph Knapp. The shop is located south of Sidney on HWY 16, 2650 South Central Ave. Their hours of business are Monday-Friday, 7 am-6 pm, Saturday from 7 am-2 pm.

The three men began life each individually in the rural communities of America. They were raised on the principles that all men and women were endowed by their creator with certain inalienable rights including the God given right to life, liberty, and the pursuit of happiness.

Their lives were vastly different. Each one eventually found themselves working in the Bakken Shale. Each one has come to love the Bakken area. This land for them is truly the frontier. It is open and free, harsh and vast, ever changing, full of adventure and opportunity. Each of these men has re-located their families here and have now made this home. After Covid-19 rocked the oilfield and the economy this team of three began to look for an opportunity in the area that could fill a need.

Continued on page 3A.



Pictured is (L-R) Brandon Batty, Joseph Knapp and Bryce Dinkelman, owners of Frontier Tire & Glass, Sidney.



Richey Homecoming

Richey of R&L Fusion had their homecoming parade and pep rally on Friday, Sept. 18 with their King Sam Smith and Queen Rhiannon Reichel. R&L beat Wibaux 47-20 during the homecoming football game. (Photo by Janet Fatzinger)



Savage Homecoming

Savage held their homecoming last week. Pictured above is Queen Shyanne Castro and King Sloan McPherson. The Savage volleyball team beat Bainville 3-0 and Savage football won against Bainville 80-8 on Sept. 19.

LYREC Book, Game & Food Drive in Oct.

In the spirit of Co-op Month Lower Yellowstone Rural Electric Cooperative (LYREC) will be holding a book, game, and food drive throughout the month of October.

Unfortunately, the seniors and children have felt the impact of social isolation with the COVID-19 pandemic. In an effort to shine light on this pandemic, LYREC will be collecting new and used books, puzzles, games, crafts etc. The donations will be distributed to several organizations throughout the LYREC service territory.

The Richland County Food Bank is continuously in need of donations. All donations are greatly appreciated.

There will be a bin placed in the front of LYREC office for donations.

If you would like to make a monetary donation, please call LYREC office at 406-488-1602.



REAL ESTATE FINANCING
For Home Purchases & Refinancing
Home Equity Loans Also Available

Janet Sergent
Real Estate Loan Officer
NMLS ID# 525727
www.richlandfcu.com

Richland
FEDERAL CREDIT UNION

201 W Holly St • Sidney, MT • 406-482-2704 | 18 E 2nd St • Culbertson, MT • 406-787-5890



Yellowstone Chiropractic Clinic
(406)-433-4757 222 2nd Ave. SW
1-866-433-4757 Sidney, MT 59270


Dr. Ryan Laqua
Chiropractic Physician &
Certified Medical Examiner

• Sports Injuries • DOT Physicals
• Personal Injuries & Pain Conditions

Thank You

Friends of the Fairview Bridge and the Fairview Chamber of Commerce would like to express their deep appreciation to Hurley Enterprises of Fairview for services “above and beyond” during the recent east end Cartwright Tunnel repair.

Huge thank yous also go out to the Double Barrel Saloon & Casino and Powder Keg for providing meals, and to the Montana Conservation Corps, a division of AmeriCorps, for their excellent work.





Pickup And Delivery Dates:
Sidney: Wed Only
Watford City: Tues, Thurs & Sat

We would like to assure all of our customers and staff that Model Drive-In Cleaners is taking all necessary steps recommended by our Drycleaners Association and backed by the Centers for Disease Control during the COVID-19 outbreak. This means all items coming in and going out of Model Drive-In Cleaners will be sanitized.

Our Williston and Watford City stores remain open with hours of operation unchanged, however our Sidney store is temporarily closed.

Serving Watford City At Door 204
204 N Main • 701-842-6441 | Mon-Fri: 7am - 6pm • Sat: 10am - 5pm
Serving Sidney At Big Sky Embroidery And Design
108 E Main • 406-433-7679 | Mon-Fri: 10am - 5pm

DRY CLEANING | SHIRTS & JEANS STARCH | WELDERS STARCH
1129 2nd Ave W • Williston, ND | 701-572-3734 | www.willistondrycleaners.com
Mon-Fri: 8am - 6pm • Sat: 9am - 3pm

AREA RECOVERY GROUPS

MONDAYS:
12 p.m. — AA Monday Noon Group, Matthew House Office, 416 2nd St. NW, Sidney, MT.
1 p.m. - 3 p.m. — Grief Recovery Support group, First Lutheran Church music room, Watford City.
6 p.m. — Al-Anon Family Group Meeting, Trinity Lutheran Church Ed. bldg., 214 S. Lincoln Ave., Sidney, MT.
8 p.m. — AA Group, Northern Pump & Compression, Watford City. Call 770-3603 or 770-2675 for directions or ride. Hotline/Info 701-609-8663.

TUESDAYS:
7 p.m. — AA Welcome Home Group, Sunny's Family Restaurant, 102 E. Main St., Sidney, MT, Central Avenue Entrance.
7 p.m. — 24-hour Women's AA group meeting, Northern Pump & Compression, Watford City. Hotline/Info 701-609-8663.

THURSDAYS:
7:30 p.m. — Al-Anon Meeting, Presbyterian Church, 316 4th Ave. NE, Watford City, ND.
8 p.m. — AA Group, Northern Pump & Compression, Watford City. Call 770-3603 or 770-2675 for directions or ride. Hotline/Info 701-609-8663.

FRIDAYS:
6:30 - p.m. - 5 Stones - Faith Based Recovery meeting, Sidney First Church of the Nazarene, 606 9th St. SW, Back door is open.
7 p.m. — AA Welcome Home Group, Sunny's Family Restaurant, 102 E. Main St., Sidney, MT, Central Avenue Entrance.

SATURDAYS:
7 p.m. — AA Welcome Home Group, Sunny's Family Restaurant, 102 E. Main St., Sidney, MT, Central Avenue Entrance.
7 p.m. — AA 24 group meeting, Northern Pump & Compression, Watford City. Hotline/Info 701-609-8663.

SUNDAYS:
7 p.m. — AA Welcome Home Group, Sunny's Family Restaurant, 102 E. Main St., Sidney, MT, Central Avenue Entrance.

STATISTICS

LAKE WATER LEVEL REPORT

Sakakawea

Current Elevation.....	1839.9
Last Week's Elev.	1840.0
One Year Ago	1846.6
Release For Day (C.F.S.)	14,000

SIDNEY WEATHER DATA

Source: MSU Eastern Agricultural Research Center

Date	High	Low	Precip.
September 14	75	43	0.00
September 15	67	46	0.00
September 16	63	40	0.00
September 17	72	38	0.00
September 18	79	39	0.00
September 19	77	45	0.00
September 20	71	54	0.00
Total 2020 YTD Precipitation.....	6.262		

OBITUARIES

Benjamin “Ben” McDowell, 59, Sidney, MT

Memorial services for Benjamin “Ben” McDowell, 59, Sidney, MT are at 2 p.m., Wednesday, Sept. 23, 2020, at Richland County Event Center at the Fairgrounds with Pastor David Huskamp officiating.

Cremation has taken place under the care of Fulkerson-Stevenson Funeral Home, Sidney, MT.

Remembrances, condolences and pictures may be shared with the family at www.fulkersons.com.

Ben passed away on Thursday evening, Sept. 10, 2020 at his home in Sidney, MT.

Donald J. “Don” Steinbeisser, 85, Sidney, MT

Mass of the Christian Burial for Donald J. “Don” Steinbeisser, 85, Sidney, MT was held at 10 a.m., Friday, Sept. 18, 2020, at Richland County Event Center at the Fairgrounds with Father Jim O’Neil as presider.

Wake/Rosary services were at 6 p.m., Thursday, Sept. 17, 2020, at St. Matthew’s Catholic Church, Sidney, MT.

Interment was in Sidney Cemetery, Sidney, MT under the care of Fulkerson-Stevenson Funeral Home, Sidney, MT.

Visitation was Thursday, Sept. 17, 2020 from 10 a.m.-4 p.m. at the funeral home and one hour before services at Richland County Event Center.

Remembrances, condolences and pictures may be shared with the family at www.fulkersons.com.

Don passed away Saturday, Sept. 12, 2020 in Billings, MT.

Forrest W. Markle, 71 Sidney, MT

Memorial services for Forrest W. Markle, 71, Sidney, MT were held at 2:30 p.m., Saturday, Sept. 19, 2020 at Faith Alliance Church, Sidney, MT with Pastor Paul Turek officiating, under the care of Fulkerson-Stevenson Funeral Home, Sidney, MT.

Remembrances, condolences and pictures may be shared with the family at www.fulkersons.com.

Forrest passed away Sunday, Sept. 13, 2020 at his home in Sidney, MT.

James “Jim” Stoner, 75 Sidney, MT

A funeral service for James “Jim” Stoner, 75, Sidney, MT was held 10 a.m., Monday, Sept. 21, 2020 at Sidney Church of the Nazarene with Pastor Richard Evans officiating.

Burial of cremated remains took place in Dawson County Cemetery, Glendive, MT under the direction of Fulkerson-Stevenson Funeral Home, Sidney, MT.

Visitation was Sunday, Sept. 20, 2020 from 10 a.m.-4 p.m. at Fulkerson-Stevenson Memorial Chapel, Sidney, MT.

Remembrances, condolences and pictures may be shared with the family at www.fulkersons.com.

Jim passed away Tuesday, Sept. 15, 2020 at his home in Sidney, MT.

Lois A. Lang, 93 Sidney, MT

Mass of the Christian Burial for Lois A. Lang, 93, and Loran Lang, 92, Sidney, MT were held at 2 p.m., Tuesday, Sept. 22, 2020 at St. Matthew’s Catholic Church, Sidney, MT with Father Jim O’Neil as presider.

Interment was in Sidney Cemetery, Sidney, MT under the care of Fulkerson-Stevenson Funeral Home, Sidney, MT.

Visitation was Monday, Sept. 21, 2020 from 10 a.m. - 5 p.m. and family received friends from 3-5 p.m.

Remembrances, condolences and pictures may be shared with the family at www.fulkersons.com.

Lois passed away Tuesday evening, Sept. 15, 2020, at Sidney Health Center Extended Care, Sidney, MT.

Richland County Switches To All-Mail Ballot General Election

In Person Voting Available at Courthouse on Nov. 3

Submitted by Ruth Moore, Elections Clerk, Richland County Clerk & Recorder’s Office

After much discussion, Richland County will be having an all-mail ballot election for the Nov. 3, 2020 General Election to keep uniformity and fairness throughout the state. With the majority of the counties going with an all-mail ballot and multiple media outlets and candidate sites putting out all-mail specific instructions, voters are getting confused with conflicting information. Richland County will no longer be having a polling place election as we have previously stated.

As per the Governor’s directive, in-person voting will still be permitted. Voting booths will be set up in the Courthouse for in-person voting. Ballots may be dropped off in person at the Clerk & Recorder’s office.

Ballots will be mailed Friday, Oct. 9. Ballots will only be mailed to active registered voters. Voter status and address may be checked by contacting the Clerk & Recorder’s office at 406-433-1708 or at <https://app.mt.gov/voterinfo/>. Inactive voters will need to fill out a registration card to become active to receive a ballot. For security, ballots cannot be forwarded. Change of address forms and registration forms are available at the Clerk & Recorder’s office or online.

Signup For The Roundup

The Roundup offers free weekly mail delivery in Sidney. If you have a Sidney mailing address and currently do not receive The Roundup newspaper at home (and would like to) sign up today! Stop by 111 West Main, call 406-433-3306 or send your name and address to us at either classesads@esidney.com or PO Box 1207, Sidney, MT 59270.

EVENTS

SEND US YOUR EVENTS!

THE ROUNDUP: PO Box 1207 • 111 West Main • Sidney, MT
406-433-3306 • Fax: 406-433-4114 • Email: classesads@esidney.com

RICHLAND COUNTY

Events in Sidney unless otherwise listed. MT Zone.
Book, Game & Food Drive Oct. 1-31
Lower Yellowstone Rural Electric Cooperative will be collecting new and used books, puzzles, games, crafts, etc. for seniors and children and distributing them to several organizations within the LYREC service territory. They will also be collecting for donations for Richland County Food Bank. For monetary donations call LYREC office, 406-488-1602.

Wed., Sept. 23
10 a.m.-4 p.m. - **Richland County Timeline** - Through Oct. 3. - **39th Annual Quilt & Needlework Show** - Through Oct. 3. Viewing is free and open to the public. MonDak Heritage Center, Tues.-Fri., 10 a.m.-4 p.m.; Sat., 1-4 p.m. For more information call 406-433-3500, e-mail mdhc@richland.org or visit <https://mondakheritagecenter.org/>.

Thurs., Sept. 24
10 a.m.-4 p.m. - **Drive-Thru Flu Shot Clinic** - Adults only, regular and high-dose flu shots, no appointment needed, Richland Co. Fire Hall. Follow traffic signs to enter fire hall from the north side. For more information call Richland Co. Health Dept., 406-433-2207.

Fri., Sept. 25
10 a.m.-5 p.m. - **Walk-In Handprint Plate: Quarantine 2020** - Create a “2020 Quarantine” Walk-In Handprint Plate with your little ones. Appointments required, masks required for ages 6 and up, 15 minute time slots, cost \$30, spaces limited. MonDak Heritage Center. Call 406-433-3500 or stop by to make an appointment.

Sat., Sept. 26
7:30 a.m. - Noon - **Richland County Farmers Market** - Parking lot east of Sidney-Richland County Library on the corner of 2nd St. NW and 2nd Ave. NW. Masks encouraged.
9 a.m. - **Debby Hatter Benefit** - Four person golf scramble, tournament registration 9-10:30 a.m., tee off at 11 a.m., Sidney Country Club, \$50 per golfer. Followed by a free will offer brisket & pulled pork dinner, 5 p.m. and silent & live auction, 7 p.m., Sidney Elks Lodge. For more information on benefit and auction call Kathy Nicholson, 406-480-9032, on golf tournament call Ryan Laqua, 406-480-9052. An account has been set up at Richland Federal Credit Union for financial donations. 5:30-7 p.m. - **Matthew House Chili Dinner Fundraiser** - Open to the public. Sidney Moose Lodge.

Sun., Sept. 27, Oct. 11, 25
9 a.m.-noon - **Breakfast** - Open to the public. Sidney Moose Lodge.
1 p.m. - **Bingo** - Open to the public. Sidney Moose Lodge.

Mon., Sept. 28
7 p.m. - **Snacks & Chats** - Anxiety & depression support group for teens ages 13-19. Board games, foosball, ping pong and treats. Meetings on 2nd and 4th Mondays each month, Pella Church, not church related.

Fri., Oct. 2
6:45 p.m. - **Kathleen Williams Meet And Greet** - Kathleen Williams candidate for the US House will meet voters at 320 23rd Ave, NW, Sidney. Public welcome.

Sat., Oct. 3
10 a.m.-4 p.m. - **Open Studio Saturdays** - All participants must make an appointment by calling 406-433-3500 or email mdhc@richland.org. Participants limited to 7 maximum. Adults 18+ years old only, must wear a mask. MonDak Heritage Center.

Mon., Oct. 5
6:30-8 p.m. - **Mothers of Preschoolers (MOPS) Meetings** - Open to all Moms with school aged children and younger, including Moms who are expecting. Appetizers, desserts, guest speakers, videos, discussions and crafts. Sidney Lutheran Brethren Church, 1101 Madison Lane. No childcare provided. For more information call Stacy Abar, 406-672-1463.

Sat., Oct. 10
4 p.m. - **Trace Louis Memorial Event** - Free will donation dinner, 50/50 tickets; 100/100 raffle, silent and live auction. Happy hour, 4:30 p.m. Free will donation dance with live band, Stone Yellow. Book drop, books donated to local school. Richland Ranger Hockey Arena.

Sat., Oct. 17
5-10 p.m. - **Mule Deer Foundation Fund-Raising Banquet** - Fun for the whole family. Dinner and auction featuring live and silent auctions, gun raffles, hunting trips, premium outdoor gear and more. Richland County Event Center.

McKENZIE COUNTY

Events in Watford City unless otherwise listed. CT Zone
Thurs., Sept. 24 & Oct. 1
3-5 p.m. - **Food Giveaway Only** - First Presbyterian Church, 316 4th Ave. NE.

Fri., Sept. 25, 7 p.m. & Sat., Sept. 26, 6 p.m.
2020 NDRA Championship Finals Rodeo - Wide variety of vendors, concessions and beer garden. Wild ride for each performance, \$250, buckle for the champion, kids boot race. For more information contact Eva Hepper, 701-898-9801. McKenzie County Fairgrounds.

Wed., Sept. 30
2-4 p.m. - **Workforce Connection Information & Networking Forum** - Job seekers, employers and interested community members are invited to attend, no cost to participate. Job seekers will hear of ways to help them with the job search, and employers will hear about effective human resource strategies to help them find the best workers. Rough Rider Center. For more information contact the Rough Rider Center.

Sat., Oct. 17
8:30 a.m. - **2020 Fall Frolic 5K Run/Walk** - 8:30 a.m. check in; 9 a.m. race start. Rough Rider Center. Preregister at roughridercenter.com, \$30. T-shirt, medal, race bib and brunch included with registration. For more information contact Asha Kirkland, 701-842-3665 or ashak@roughridercenter.com.

WILLIAMS COUNTY

Events in Williston unless otherwise listed. CT Zone.
Sat., Sept. 26
10 a.m.-12 p.m. - **Out of the Darkness Williston Experience** - Free registration can be completed online by searching “Williston out of the darkness experience registration” and clicking on AFSP website. Four locations to meet: Alien Park, Harmon Park, Spring Lake Park, and Dakota Parkway. For more information contact Tarren Rehak, 701-770-7891 or tarren.rehak@willistonschools.org. Donations accepted until Dec. 31.

Sat., Sept. 26, Oct. 3, 10
9 a.m.-noon - **Main Street Williston Market** - Vendors will be selling homemade and homegrown goods and food. Sponsor activity, food truck and music each week. Main street between 1st and 2nd Sts., and the Hedderich’s lot. Please respect social distancing.

Fri., Oct. 16
7-9 p.m. - **Wine Not** - An exclusive wine tasting and Charcuterie board event, James Memorial Art Center, 621 1st Ave. W. Only 10 tickets available good for 2 participants, \$100 each. Tickets sold at the James Memorial Art Center during office hours. For more information call 701-774-3601.

DAWSON COUNTY

Events in Glendive unless otherwise listed. CT Zone
Mon.-Fri., Sept. 28-Oct. 23
8 a.m.-8 p.m. - **Dawson Community College Annual Christmas Card Art Exhibition** - Jane Carey Memorial Gallery, DCC Campus. Four winners chosen; winning artists have their designs made into greeting cards and envelopes. Greeting card proceeds will fund the DCC Art Club. Vote for your favorite at dawson.edu.

Sat., Oct. 10
5:30-8:30 p.m. - **Dawson Community College Annual Buccaneer Bash** - Heavy hors d’oeuvres, live and silent auctions, games and cash bar. This event supports Dawson College Foundations efforts to provide support and scholarships to students. To purchase tickets or sponsorships contact Dennis Harp, 406-941-2519 or dharp@dawson.edu.

Sidney Volleyball Action

Sidney took on Havre in volleyball at home on Sept. 18. The Eagles lost to the Blue Ponies in three sets 25-16, 14-25 and 22-25. Sidney will face Wolf Point Sept. 26 at home starting at 1 pm. Pictured is Sidney outside hitter Hadley Garsjo pushing the ball over the net in Game 2.



Fall Classes Open For Registration

For details and to register, visit handyandysnursery.com or our Facebook page

September 26Fall Arrangement
October 3Fall Wreath
October 10 & 17..... Succulent Pumpkins

Fall Arrangement September 26th

Monday - Friday: 9am - 5:30pm
Saturday: 9am - 5pm
3515 West Front St
Williston, ND | 701-572-6083

Handy Andy's
Since 1952 Nursery

2020 Census State Championship

Submitted by Leslie Messer Executive Director Richland Economic Development Corp
Game on, Montana! Can we count you in?
Complete the 2020 Census, and help your community bring home the state championship plus \$20,000 in federal funding per Census response.
That's right, Montana

gets \$20,000 in federal funding over a decade for each person counted in the Census. Based on Census data Montana receives:
• Almost \$500 million each year for education programs
• Nearly \$600 million each year for infrastructure
• Over \$1 billion each year for health care
• Over \$250 million each year for seniors, workers, and families
And, nationally, Census data helps fund \$5 billion each year for Indian Health Services.
10 minutes of your time = 10 years of funding.
Only 53.7% of Richland County residents have responded! WE CAN DO BETTER!! The deadline is Sept. 30!

Frontier Tires & Glass...

Continued from page 1A.

Bryce, loyal and efficient, started in the oilfield in 2007 driving truck and mechanical work, he eventually made his way to the Bakken and then was recruited by an oil firm to Colorado to run the maintenance program in Colorado, North Dakota, Pennsylvania and Texas. Later Bryce started his own mechanic company called WB Automotive which did oil changes, brakes, struts, wiring, DOT inspections as well as owning his own trucking company.

Brandon is a fun and hardworking man who started a roustabout company when the federal government was drilling hot and heavy in the Vernal, UT and Dinosaur Colorado fields. When the U.S. presidency had an administration change with the election of 2008, drilling was nearly stopped on all federal lands. Brandon needed a new Frontier to work in.

Joseph is a man of integrity and loves people. In his career his focus has been building relationships with people. He originally came to the Bakken to operate locomotives in Trenton, and has worked since then in the oilfield in trucking and trains. In May, Joseph was fortunate to enter into business with Bryce and Brandon.

This Eastern Montana, Western North Dakota oil patch was full of opportunity because of 3 things. First: the existing BNSF railroad that was still in service from the Great Northern Railway system. This railroad is still in service because of the amazing commitment to agriculture that exists in Minnesota, North Dakota, Montana, Idaho and Washington state. This railroad gave the ability to get Bakken oil to the market by railcar. Second: the advanced technology

from directional drilling. This allowed the driller to draw much more petroleum out of the ground at lower cost and with a much smaller environmental impact. Third: private property ownership. With the land up here held in the hands of private farmers, families, and businesses, the free market system was able to work. When supply and demand dictate the market price and the government's role is to protect individual rights, Americanism can flourish. It's not perfect but it has been a more perfect union since 1776 than centuries of previous civilizations.

Bryce, Brandon and Joseph were all beneficiaries of these 3 ingredients that made the 2010-2014 boom. Brandon who is the founder of Triple B roustabout services, initially hoped to make a good start here. Brandon has come to love Richland, Roosevelt, Dawson, McKenzie and Williams counties and did not want to leave. After the oil bust from Covid-19 Brandon began to look for other opportunities to diversify his services to help hedge the boom and bust cycles.

Bryce & Joseph decided that the need was here for an additional tire, glass and light maintenance facility and began looking for property. They called on Brandon Batty as an experienced businessman and friend to get some advice. The idea excited Brandon as he had previously contemplated the idea of an adding a tire store to Triple B Roustabout Services. At the first business meeting they included auto glass as an additional service.

The idea was here, the opportunity was here, the personnel was here. Now where to do the business? Brandon suggested they look at the old McJunkin Redman building on the

southside of Sidney next to Amunrud's RVs. there sits a 5-acre lot with 2 shops. The short-topped older shop has a long front porch and looks like a building you might see on the old frontier where a trapper might trade fur and buy supplies for the up-coming winter. The site is a perfect location for a tire & windshield shop, plenty of room for cars, trucks and semis.

The original building was designed and built by John Zaback in 1980 when he had a dream to build a motorcycle facility to service the area. John named the company M & R Cycles after his sons Mike and Rodney. John ran the business with the help of his family and friends. John passed away in 1998 while vacationing in Arizona. The business was bought out and the parts and assets were sent to Williston.

The building was then purchased by an investment company who added a very large shop and improved some additional acreage for storage and it was leased to McJunkin Redman MRC, an oilfield supply company. MRC was acquired and the inventory again was sent to Williston. The building sat vacant from 2015 until July 2020 when Bryce, Brandon and Joseph began clean-up and moderate renovation.

The building is now being used again to service the people, families and businesses of the MonDak.

The name Frontier Tires & Glass was affectionately chosen as a tribute to the past. President Thomas Jefferson commissioned Lewis & Clark who headed the Corps of Discovery; pioneers and immigrants came here looking for an opportunity and a better life; and the frontier of future generations that can still believe, dream and build on our history.

Drive Thru Flu Shot Clinic

Thursday, September 24, 2020,
10AM—4PM

Richland County Fire Hall, Sidney MT

Get your flu shot without getting out of your vehicle!

Bring your Insurance, Medicare or Medicaid cards :: Cash or Check
Adults only-no children, no pets :: Flu shots only

Call for an appointment for families and children during our regular clinic hours
406-433-2207

COVID-19 Safety
DO NOT attend the clinic if you are not feeling well.
DO NOT attend if you are waiting for test results from a COVID-19 test.
DO NOT attend if you have COVID-19 or have been exposed to COVID-19 in the last 14 days.
Masks are required!

NOW OPEN

• FRONTIER •

TIRES & GLASS

EST. 2020

- Tires
- Windshields
- Brakes
- Struts
- Alignments
- Oil Changes
- Semi-Truck wiring, lights, brakes & tires
- DOT Inspections
- And More!

Mon-Fri: 7am - 6pm • Sat: 7am - 2pm | 406-488-TIRE (8473)
2650 S Central Ave • Sidney, MT (Old M&R Cycles Building)

SPRUCE UP THE HOME BEFORE FALL

Dining Room Sets • Beds • Night Stands • Books
Antiques • Desks • Wall Decor • Couches & More!

YELLOWSTONE Marketplace

Mon-Sat: Noon - 6pm • Sun: by appointment
406-489-1945 • 102 N Central Ave • Downtown Sidney

MISSOURI RIVER FARM

County Rd 355 • Fairview, MT
181± Acres | \$750,000
MLS# 311303 • CMPMontana.com

2020 BEST BROKERAGES

- Acreage: 181± total; 121± irrigated
- Highly Productive Agricultural: Sugarbeets and Wheat
- Plentiful Water Rights: Lower Yellowstone Ditch and Missouri River
- Missouri River Frontage
- Incredible Hunting: Pheasant, Waterfowl, and Deer

NICK DODGE
REALTOR/BRS
NICK@CMPMONTANA.COM
406.593.2666

CAREY KANAVAL
BROKER/GR/SPS
CAREY@CMPMONTANA.COM
406.880.2355

Presented exclusively by:
CLEARWATER MONTANA PROPERTIES
CMPMontana.com | 800.577.3013
SportsAfieldTrophyProperties.com



LAMBERT HOMECOMING MON - FRI, SEPT 21-25

Friday

12 noon.....Homecoming parade down Main St.
12:30-1:15 p.m....Community Pep Assembly
1:30 p.m.....Early out
7 p.m.....Football vs Froid/Lake, coronation at half time
9-midnight.....Homecoming Dance

DRESS UP DAYS

Mon No School Thurs..... Mom/Dad Day
Tues Sports Day Fri Fusion Pride Day
Wed Wild West Day

Gem City Motors
2020 GMC SIERRA 1500 SLT
SAVE \$6,000
703 S. Central • Sidney
406-433-3120
www.gemcitymotors.com



FUSION FOOTBALL

Back (L-R): Assistant Coach Jim Miller, Josh Sponheim, Nevin Kelly, Blaine Frisbie, Grady Gonsioroski, Layne Herman, Brett Mullin, Head Coach Brock Miller. **Front (L-R):** Trace Krenning, Corbin Mullin, Nicholas Engesser, Mason Elverude, Tieggen Cundiff. **Not Pictured:** Austin Lien.

TRIPLE
DISPOSAL
776-2500
SAVAGE, MT
Jim & Rebecca Miller

Millers Garbage Service
Savage, MT
406-776-2334

FUSION CROSS COUNTRY

(L-R): Mataya Veverka, Ryan Eggert, Head Coach: Cesar Mireles, Nicholas Ellerton, Assistant Coach Carla Smith, Samuel Smith, Matthew Ellerton, Jacob Smith.



pepsi

Nutrien Ag Solutions
Your agronomist helping you feed the future
Chet Hill
Sidney, MT
406-413-0309



FUSION VOLLEYBALL

Back (L-R): Head Coach Shasta Senner, Kiera Strohm, Paige Carda, Jaylyn Klempel, Rhiannon Reichel, Halley Mullin, Brie Mullin, Laurel Sponheim, Shaelyn Williams, Assistant Coach Michelle Switzer. **Front (L-R):** Gracelyn Gonsioroski, Lauren Prevost, Shawna Eggert, Makyya Beyer, Isabelle Fatzinger, Taylor Goosen.

TOWN & COUNTRY REPAIR
406-774-3475
Lambert, MT

Eagle Country Ford
"Experience the Eagle Country Difference!"
Sales & Service
Mon-Fri: 8am - 5pm
Sales
Sat: 9am - 1pm
215 East Main St • Sidney
1-800-482-1810 • 433-1810

LAMBERT ROYALTY

Back (L-R): Paige Carda, Amber Pflughoft, Makyya Beyer. **Front (L-R):** Brett Mullin, Blaine Frisbie, Grady Gonsioroski.



PJ's Auto Glass & Tint
• Auto Glass Replacement
• Window Tinting
• Interstate Battery Dealer
Insurance Approved
Sidney, MT | 406-798-3686

Case Implement
2429 W. Holly St.
406-488-4400

SONDA'S
FR CLOTHING & EMBROIDERY
Office: 406-433-6757
Fax: 406-433-6755
2221 S. Central Ave
Sidney, MT

NORTANA GRAIN CO
LAMBERT - SIDNEY
406-774-3331
SIDNEY, MONTANA
406-433-3014
406-433-2508

DOORBUSTIN
Portables & Septic Service, LLC
• Portable Toilet Rentals
• Septic Pumping & Installation
• Jetting Frozen Sewer Lines
• Pump Repair & Replacement • Snake Jobs
• Camera-Locate Sewer Lines
• Pipe Burst Sewer Lines • Troubleshooting
Office: 406-433-7586 • Fax: 406-433-7596
Service: 406-489-0915
PO Box 1003 / 34980 Hwy 23, Sidney, MT

LET'S GO FUSION!
From the
Lambert School Staff

Richland Pump & Supply
(406) 488-8706
David Williams
Cell (406) 489-8706
Scott Ramus
Cell (406) 489-8707
1511 S Central Ave • Sidney

CQ BAR & Grill
"Only" Bar In Town
Lunch served anytime
Orders to go
"Best Burgers In Town!"
406-774-3421 • Lambert

Have Fun At Homecoming!

HURLEY'S OILFIELD SERVICES

Porta Potties • Potable Water • Loaders • Communications • Backhoe • Trucking • Skid Houses

Dispatch: 701-844-1234 / Fairview, MT

Protect Yourself With The Flu Shot

Across the country, shipments of this season's influenza (flu) vaccine are arriving at healthcare facilities. Though COVID-19 continues, there is currently no available COVID-19 vaccine. While the seasonal flu shot won't provide protection from COVID-19 infection, it will reduce the likelihood of a double infection of the flu and COVID-19.

Thankfully, the preventative actions we're all taking now, by wearing a mask, social distancing, staying home when you're sick, and avoiding large gatherings, are also helpful in avoiding the seasonal flu.

The best way to avoid getting the flu, however, is to get the annual flu shot. The annual flu shot may help you to lessen the severity of the flu if you do contract the virus, keeping you out of the ER and recovering quicker than without the vaccine's protection.

"The flu shot can prevent an infection that can lead to hospitalization or

even death. Having influenza on its own can be deadly; having COVID-19 on its own can also be deadly. Why not protect yourself when you can?" said Jacquelyn Free, FNP-C, Richland County Health Officer and healthcare provider, MonDak Clinic, Fairview.

Each flu season, which runs from October-March, flu cases, deaths and trends are tracked and reported by public health. During the 2019-2020 influenza season, Richland County saw 137 flu cases, with 7 hospitalizations and one death. The highest rates of infection were in the populations from age 0-18 years old, and from 25-65 years old. Of all cases, only 28 out of the 137 cases had received the flu shot.

If you are feeling sick and are diagnosed with the flu, your medical provider will recommend that you stay home from school, work and activities for between five and seven days. You'll need that time to rest and recover,

and staying home will avoid spreading the infection to others.

The Richland County Health Department will be holding the annual mass flu shot clinic as a drive-through at the Richland County Fire Hall, Sidney on Sept. 24, from 10 a.m.-4 p.m. The Drive-Through Clinic will serve adults only, and offers both regular and high-dose flu shots. No other shots will be given during the clinic. No appointment is needed. Flu shots cannot be given to those who have animals in their vehicles. Children may be in the vehicle, but may not receive flu shots. Follow traffic signs to enter the Fire Hall from the north side.

DO NOT attend the clinic if you are not feeling well. DO NOT attend if you are waiting for test results from a COVID-19 test. DO NOT attend if you have COVID-19 or have been exposed to COVID-19 in the last 14 days.

Flu shots, as well as other vaccines, for children

and families will be available during regular clinic hours, on Monday, Tuesday, and Wednesday, 10 a.m.-4:30 p.m. by appointment. Additional clinic hours are the second Wednesday until 6 p.m., and the third Thursday of the month, from 1-4 p.m. by appointment. Check the Department Facebook page at www.facebook.com/RichlandCountyHealthDepartment for changes to regular clinic hours.

For further information or to inquire about group billing, contact the Richland County Health Department at 406-433-2207.



UNION GATEWAY AGENCY

Your Insurance Team
Independently
Representing:



BlueCross BlueShield
of Montana



Aflac



PacificSource
HEALTH PLAN

~Life
~Health
~Medicare Supplement
~Medicare Part D
~Group Health
~Vision
~Dental
~Long Term Care

202 3rd Ave NW
Sidney MT 59270
phone 406-488-4366
fax 406-630-4433

www.uniongatewayinsurance.com

Legislative Report

Greetings,

I had my last interim EQC meeting last week. We discussed issues like delisting grizzlies, wilderness study areas, TENORMS in waste disposal sites, a new license for trappers, aquatic invasive species, chronic wasting disease, and many other topics. We heard from many speakers and went on several educational tours. There was a lot of discussion about these issues. We again see the philosophy differences between committee members when talking about issues like delisting the grizzlies. The National Wildlife Federation CEO stated in testimony that we need to learn to co-exist with grizzlies. Where my philosophy, along with the majority of the committee, is to hunt them before they kill some child playing in his backyard someplace. To this area we talked about the waste disposal sites and decided to make our regulations equal to that of North Dakota. We didn't think we

should have to deal with all the waste if we didn't have the whole industry.

The other thing we dealt with in this process was the pandemic. Some of the meetings were held by ZOOM. It proved to be a very frustrating situation. The loss of interaction with people and the problems with technology created communication gaps. It was a very inefficient way to do the people's work.

We are getting close to another election in this great country. As great as it is there are still a lot of problems to be solved. We have people burning public buildings, private businesses, shooting law enforcement and ordinary citizens. We have elected officials who are encouraging these violent protesters and saying they are going to defund law enforcement. On the other hand, there is another choice to vote for. Please be an informed voter.

There has been some talk about my votes on a

human trafficking bill and some bills related. My wife and I have 17 grandchildren and 1 great grandchild and human trafficking is a big concern to us. All most bills do is tweak Montana code. Human trafficking was already illegal in Montana code before SB 147 was introduced. Montana code was not perfect before, and it still is not perfect after SB 147. The difference now is we are going to spend more money with very little change in the result. Montana Family Foundation is strongly against human trafficking and they have put a lot of effort and resources into fighting it. They trust my judgment and have endorsed me in my senate race.

As always, I welcome questions on any issues. You can contact me at 406-365-7967, my cell 989-1372, my email steve.hinebauch@mtleg.gov, or regular mail 610 Road 118, Wibaux, MT 59353.

- Steve Hinebauch

MCKENZIE COUNTY COWBOYS ASSOCIATION

Presents A Wild West Weekend



2020 NDRA CHAMPIONSHIP

★ Finals Rodeo ★

Friday, Sept. 25 - 7 p.m. • Saturday, Sept. 26 - 6 p.m. CT

MCKENZIE COUNTY FAIRGROUNDS
WATFORD CITY, ND

- Wide variety of vendors under the big top tent
- Concessions and Beer Garden

Wild Ride for each performance \$250 Buckle for the Champion!

★ Kids Boot Race ★

EACH PERFORMANCE!!

For More Information Contact
Eva Hepper 701-898-9801

Host Hotels

TEDDY'S
Residential Suites

Teddy's Residential Suites • 700-442-4444
111 1st Ave. SE • Watford City, ND

LITTLE MISSOURI

Little Missouri Inn & Suites • 700-442-4444
111 1st Ave. SE • Watford City, ND

Thank to a brand of great people.
Let them know you're with the BEST to get the best.



NATIONAL COFFEE DAY

TUES, SEPT 29





GET DOUBLE PUNCHES ON NATIONAL COFFEE DAY TUES, SEPT 29TH ONLY!



PUNCH CARD

204 N. MAIN ST 701-842-6441

Meyers Department Store/Door 204

M-F: 10am - 6pm Sat: 10am - 5pm | 701-444-2306 | 200 N Main, Watford City, ND

Coffee for Every Taste!

AMERICA'S COFFEE

BLACK RIFLE COFFEE COMPANY

ESTABLISHED 2014

Beans, Ground & Rounds

A portion of all sales go to Veterans.

Fun Mugs to Drink It From!

Marci Cundiff - Owner

A place to find all of your home essentials and bare necessities!

121 2nd Ave NE • Sidney, MT
406-480-2676 • mtbarecave@gmail.com




BUY ANY SIZE LATTE, GET A SECOND AT HALF PRICE

add chocolate popping pearls for 25¢

Only On Tues, Sept 29 NATIONAL COFFEE DAY



THE COFFEE STOP

303 1/2 N Central Ave
Sidney, MT
Mon-Fri: 6am - 6pm
Sat: 7am - 6pm
Sun: 8am - 2pm

GRAB A PERFECTLY BREWED BEVERAGE IN OUR COFFEE BAR!

50¢ off 1 DAY ONLY TUES, SEPT 29 9AM - 6PM

ANY SIZE BEVERAGE

Choose From Your Favorite!
Coffees • Hot Chocolate • Italian Soda • Chai Teas
Ice Rages • Smoothies • Red Bull Chargers



4 & Athletics

One Location To Serve You Better!

440 N Central Ave • Shops at Fox Run • Sidney, MT
406-433-1800 | Mon-Sat: 9am - 6pm • Sun: 10am - 4pm



FAIRVIEW HOMECOMING

MON - FRI, SEPT 21-25

DRESS UP DAYS & EVENTS:

Mon Pajama Day
Tues Superhero Day
Wed Wacky Day
Thurs Inside Out Day
..... Coronation, 7 p.m.

Fri Blue & Gold Day
..... Parade 1 p.m.
..... Volleyball 3 p.m. North Gym
..... Football vs Scooby Starr Field 7:30 p.m.
..... Royalty announced at halftime of fb game

Gem City Motors
2020 GMC SIERRA 1500 SLT
SAVE \$6,000
703 S. Central • Sidney
406-433-3120
www.gemcitymotors.com

Miller's Garbage Service
Savage, MT
406-776-2334



Water Hole #3
Fairview, Montana
416 S. Ellery
406-742-5224

TRIPLE DISPOSAL
776-2500
SAVAGE, MT
Jim & Rebecca Miller

horizonresources
Solutions for your success.
Fairview, MT
701.844.5775
horizonresources.coop

NEU'S SUPERVALU
• Grocery • Bakery
• Fresh Meat • Beer
• Ice • Snacks
• Full Service Deli
406-742-5441
303 S Ellery St • Fairview, MT

FOOTBALL PICTURE:
Top (L-R): Coach Seitz, Steve Rice, Easton Hopes, Brady Buxbaum, Garrett George, Paul Hardy, Keaton Condie, Coach Bieber. **2nd row (L-R):** Coach Taylor, Jace Buxbaum, Jack Smies, Tristin Skov, Canyon Taylor, Hunter Sharbono, Coach Taylor. **3rd row (L-R):** Rowan Bushnell, Gavin Serafini, Martin Manuel, Walker Whitmus, Dylan Lorenz, Nathan Turnbow, Jace Vitt. **Bottom (L-R):** Gordon Knapp, Landen Thompson, Jaxon Vitt, Curt Rice Jr., Brock Schlothauer, Bridger Free, Jeff Tjelde.

Eagle Country Ford
"Experience the Eagle Country Difference!"
Sales & Service
Mon-Fri: 8am - 5pm
Sales
Sat: 9am - 1pm
215 East Main St • Sidney
1-800-482-1810 • 433-1810

DOUBLE BARREL SALOON & CASINO
Open 10am - 2am Daily
401 Ellery Avenue
Fairview, MT
406-742-8110
Steakhouse Hours:
Sun-Thurs: 5-9pm
Fri & Sat: 5-10pm

pepsi

**Straight Talk • Fair Prices
Honest Service**
WESTERN TIRE
1601 S Central • Sidney, MT
406-433-3858
Mon-Fri: 7am - 5:30pm
Sat: 7am - 12pm



Case Implement
2429 W. Holly St.
406-488-4400

HOTEL ALBERT
Lounge & Casino
419 S. Ellery
Fairview, MT
406-742-5164

Powder Keg PIZZA
Family Dining
Open 4:30 pm Tue-Fri
2 pm Sat & Sun
Fairview • 406-742-5180

Richland Pump & Supply
(406) 488-8706
David Williams
Cell (406) 489-8706
Scott Ramus
Cell (406) 489-8707
1511 S Central Ave • Sidney

VOLLEYBALL PICTURE:
Top (L-R): Coach Kara, Teigan Taylor, Dani Berry, Megan Asbeck, Emily Sundheim, Avery Seadeek, Piper Hurley, Jacy Gackle, Morgan Slade, Scout Hopes, Coach Kloker. **Middle (L-R):** Allison Weiss, Allison Axtman, Mekenzy Lopez, Aubree Johnson, Emily Johnson, Kallee Hopes, Allison Jensen, Taylor McPherson, Mariah Ponce. **Bottom (L-R):** Britta Poulsen, Hannah Hurley, Grace McPherson, Savannah Manuel, Hallee Judd, Madyson Lopez, Abby Berry.

Sidney Sugars
INCORPORATED

SONDA'S
FR CLOTHING & EMBROIDERY
Office: 406-433-6757
Fax: 406-433-6755
2221 S. Central Ave
Sidney, MT

Open 9am - 9pm Daily
Par Tee GOLF
Call Ahead For Tee Times
Private Parties Welcome
205 Jennison Drive
Fairview, MT
406-742-3630

PJ's Auto Glass & Tint
• Auto Glass Replacement
• Window Tinting
• Interstate Battery Dealer
Insurance Approved
Sidney, MT | 406-798-3686



MONDAK FAMILY CLINIC
An Outreach Service of
SIDNEY HEALTH CENTER
406-742-5261
304 S Ellery Ave
Fairview, MT
Mon. - Thurs.: 8:30am-5pm
Friday: 8:30am-Noon

Mon-Kota, Inc.
Fertilizer & Irrigation
Sales & Service
Reinke plus program
Platinum Plus Certified
Fairview, MT • 701-844-5300
Reinke
MORE RIGHT THAN RAIN

DOORBUSTN
Portables & Septic Service, LLC
• Portable Toilet Rentals
• Septic Pumping & Installation
• Jetting Frozen Sewer Lines
• Pump Repair & Replacement • Snake Jobs
• Camera-Locate Sewer Lines
• Pipe Burst Sewer Lines • Troubleshooting
Office: 406-433-7586 • Fax: 406-433-7596
Service: 406-489-0915
PO Box 1003 / 34980 Hwy 23, Sidney, MT

GOLD RUSH CASINO
504 South Ellery
Fairview, MT
Lounge: 742-4653 • Office: 742-4654
Open From 10am - 2am



Merchants Bank
Open 9am - 4pm
Monday - Friday
Box 465 • Fairview, MT
406-742-5203
FDIC

Roundup
A DARN GOOD LITTLE NEWSPAPER!
Sidney, Montana
406-433-3306

PLAY TO WIN!
From the Fairview School Board,
Administration & Staff
FAIRVIEW WARRIORS

W.L. NEU CONSTRUCTION, INC.
Oil Field Roads & Locations
Reclaim Work • Gravel & Scoria Hauling
neuconst@midrivers.com
Fairview, MT | 406-742-5549

SIDNEY AUTO SUPPLY
AUTO PARTS, TOOLS,
EQUIPMENT & HEAVY DUTY
TRUCK PARTS
809 E Main St • Sidney, MT
Sidney Auto Supply: 406-433-6430 • Farm & Home: 406-433-3400
Mon-Fri: 7:30am - 5:30pm • Sat: 7:30am - 2pm

FARM AND HOME
HARDWARE, HOUSEWARE,
YARD, GARDEN & JANITORIAL
SUPPLIES

Have Fun At Homecoming!

HURLEY'S OILFIELD SERVICES

Porta Potties • Potable Water • Loaders • Communications • Backhoe • Trucking • Skid Houses

Dispatch: 701-844-1234 / Fairview, MT

Championship Encourages Counties And Tribes To Compete For The Highest Increase In Self-Response Rates To The 2020 Census

Submitted by Carla Hunsley, Montana's Missouri River Country

Helena, MT - The Montana Department of Commerce has launched the 2020 Census State Championship to encourage counties and tribes in Montana to compete for the highest increase in self-response rates to the 2020 Census from now until Sept. 30. With only 15 days left in the 2020 Census count, the Commerce Department and the Montana Complete Count Committee are urging every Montana resident to respond to the 2020 Census before the shortened deadline of Sept. 30.

"This is the final count-down for the 2020 Census," said Lt. Gov. Mike Cooney,

of Montana Complete Count Committee Chair. "The counties and tribes that win the 2020 Census State Championship will get not only bragging rights with a trophy to prove it, but will also receive their fair share of federal funding for the next 10 years, accurate representation in the state legislature, and the knowledge that they contributed to the possibility of Montana regaining a second seat in the U.S. House of Representatives. Game on, Montana!"

There will be two winners for counties and two winners for tribal nations based on the percentage increase in self-response rates, as well as for the increase in the number of households that respond to

the 2020 Census until Sept. 30. To enter the championship, Montana residents who have not yet responded to the 2020 Census can do so at MY2020CENSUS.GOV, by calling 1-844-330-2020 or by mailing in the paper form if they received one.

The U.S. Census Bureau suspended all field operations from March to early May to slow the spread of COVID-19, and then cut short the deadline to Sept. 30 to respond to the Census. As a result, Montana's self-response rate is below the national average, with 59.2% of Montanans having self-responded to the 2020 Census, compared to the national average of 65.9%, according to the U.S. Census Bureau.

Even with door-to-door counting by U.S. Census workers, Montana's overall response rate is below the national average, and tribal nations and rural counties in Montana are at risk of an undercount.

The federal government is responsible for counting all households every 10 years, while the state supports the effort to educate and promote the importance of the Census. In June, Governor Steve Bullock allocated \$530,500 to the Montana Department of Commerce to continue Census education and outreach efforts.

The Montana Department of Commerce is using that funding to partner with the Montana Nonprofit Association, Western Native Voice, Forward Montana Foundation and Missoula-based marketing agency Windfall to conduct targeted outreach aimed at low self-responding areas of the state to encourage residents in those areas to fill out the Census.

For every Montanan not counted, the state stands to lose an estimated \$20,000 in federal funding over the next decade. Census information is also used to draw local

voting and school districts, and it determines whether Montana will receive a second seat in the U.S. House of Representatives.

You can track your community's progress in the 2020 Census State Championship at <https://census.mt.gov/State-Championship>.

And respond to the 2020 Census today at MY2020CENSUS.GOV, by calling 1-844-330-2020, or by mailing in your paper Census form if you've received one.

MDA Recruits For Noxious Weed Seed Free Forage Advisory Council

Submitted by Chelsi Bay

Helena, MT - The Montana Department of Agriculture (MDA) is currently recruiting for open positions on its Noxious Weed Seed Free Forage Advisory Council. The following council terms are currently vacant:

- Certified Weed Seed Free Forage Producer (Eastern Region)
- Certified Weed Seed Free Forage Producer (Any Region)
- Outfitter's or Guide's Organization
- Certified Weed Seed Free Forage Producer (Central Region)
- Western County Weed District Representative
- Eastern County Weed District Representative
- Forage Product Processor

Members of the advisory council provide guidance to the Noxious Weed Seed Free Forage (NWSFF) Program, which implements a cooperative forage and product certification system with federal, state, local, and private land managers that benefits Montanans and other states by producing and making available forage free of noxious weed seeds. Council meetings take place annually on one day in January or February.

Those interested in serving on the Noxious Weed Seed Free Forage

Advisory Council can submit a letter of interest and apply to MDA. More information and applications are available on the NWSFF Council website. Nominations can be submitted to Montana Department of Agriculture, PO Box 200201, Helena, MT 59620-0201, or agr@mt.gov.

The Montana Department of Agriculture's mission is to protect producers and consumers, and to enhance and develop agriculture and allied industries. For more information on the Montana Department of Agriculture, visit agr.mt.gov.

"I know Kathleen will go to Washington and put Montanans, not special interests, first. She'll stand up for farmers and ranchers, and make sure we get a fair shake in the House."

Buzz Mattelin
Farmer, Culbertson

KATHLEEN WILLIAMS
FOR MONTANA

VOTE KATHLEEN WILLIAMS FOR CONGRESS
Solutions. The Montana Way.
KathleenForMontana.com

Paid for by Kathleen Williams for Montana

2020 SUMMER'S END INCENTIVES

\$4,000 In Rebates & 0% for 60 Months

rebates are subject to financing with Ford and a trade-in, on approved credit



#3882

2020 EXPEDITION MAX

Starwhite, Limited, Stealth Package, DVD



#3886

2020 EXPEDITION MAX
Rapid Red, Limited



#3908

2020 EXPEDITION MAX
Agate Black, XLT, DVD



"Experience the Eagle Country Difference!"

215 East Main • Sidney, MT | 433-1810 or 1-800-482-1810 | eaglecountryfordsales.com

WESTERN TIRE

FALL CLASSIC 2020

HANKOOK IS THE OFFICIAL TIRE OF MLB

NOW THRU OCT 31

Buy 4 Select Hankook Tires

GET UP TO
\$80*



Dynapro MT2

\$70*



Kinergy 4S2

\$60*



Dynapro AT2

\$50*

Dynapro HP2, HT & Ventus S1noble2

\$40*

Kinergy PT

Hankook
driving emotion

Get your rebate faster!
submit online at
www.hankookrebates.com

*Hankook prepaid Mastercard® by mail-in or online rebate. See dealer for complete details.

WE DO MORE THAN JUST TIRES:

• Brakes • Shocks • Struts • Alignments • Oil Changes

WESTERN TIRE

TOYO TIRES
DRIVEN TO PERFORM™

► Straight Talk
► Honest Service
► Fair Prices

Firestone

1601 S Central Ave • Sidney, MT | 433-3858 | Mon-Fri: 7am - 5:30pm



McKenzie Electric
COOPERATIVE

A Touchstone Energy Cooperative
The Power of Mutual Ownership

3817 23rd Ave NE
Watford City, ND
www.mckenzieelectric.com
701-444-9288



LYREC
LOWER YELLOWSTONE
RURAL ELECTRIC COOPERATIVE

Follow Us On Social Media!

3200 W Holly St • Sidney, MT
488-1602 • www.lyrec.com



Nutrien
Ag Solutions™

Chet Hill
Sidney, MT: 406-413-0309

Jillian Mahlen
Williston, ND: 701-570-0322

Tafer Mason
Froid, MT: 406-963-7100

Brian McCabe
Froid, MT: 406-230-6120



Mon-Kota, Inc.
Fertilizer & Irrigation
Sales & Service

Reinke plus program
Platinum Plus Certified

Fairview, MT • 701-844-5300

Reinke
MORE RIGHT THAN RAIN

Straight Talk • Fair Prices
Honest Service



WESTERN TIRE

1601 S Central • Sidney, MT
406-433-3858
Mon-Fri: 7am - 5:30pm
Sat: 7am - 12pm



The Country Implement
Sidney, Montana
406-488-4400

2429 W. Holly St.
406-488-4400

SEE US FOR YOUR
INSURANCE NEEDS



Stockman Insurance

It's All About Saying Goodbye

FULKERSON STEVENSON
FUNERAL HOME

315 Second St. NW
Sidney, MT 59270
406-488-2805
email: ffh@fulkersons.com
www.fulkersons.com



NATIONAL FARM SAFETY & HEALTH WEEK

EVERY FARMER COUNTS

SEPTEMBER 20-26, 2020

The 2018 data for the U.S. Bureau of Labor Statistics indicates that the agricultural sector is still the most dangerous in America with 574 fatalities, or an equivalent of 23.4 deaths per 100,000 workers. Fall harvest time can be one of the busiest and most dangerous seasons of the year for the agriculture industry. For this reason, the third week of September has been recognized as National Farm Safety and Health Week. This annual promotion initiated by the National Safety Council has been proclaimed as such by each sitting U.S. President since Franklin D. Roosevelt in 1944. National Farm Safety and Health Week is led by the National Education Center for Agricultural Safety (NECAS), the agricultural partner of the National Safety Council.




"We Put Value On The Line"

Sheridan Electric

Medicine Lake, MT
406-789-2231

The theme for National Farm Safety and Health Week 2020 is "Every Farmer Counts." The theme is to acknowledge, celebrate, and uplift America's farmers and ranchers who have encountered many challenges over the past couple of years, yet continue to work hard to provide the food, fiber, and fuel that we need. According to the 2017 Census of Agriculture, there are about 3.4 million agricultural producers in America, which is only about one percent of our population. These farmers and ranchers not only provide the essentials that we need, but they do wonderful things for their families and friends, their communities, and beyond. That is why "Every Farmer Counts" and now is the time to prioritize their safety and health.



QUINNELL ELECTRIC

- Commercial
- Residential
- Remodels
- New Construction

Chuck Quinnell
406-776-2331



horizonresources
Solutions for your success.

Fairview, MT • 701.844.5775
Savage, MT • 406.776.2489
Culbertson, MT • 406.787.6606

horizonresources.coop



Coca-Cola
of Williston

Your Locally
Owned & Operated
Beverage Specialist

701-572-6746

SIDNEY AUTO SUPPLY
AUTO PARTS, TOOLS,
EQUIPMENT & HEAVY DUTY
TRUCK PARTS

 **AUTO PARTS**

809 E Main St • Sidney, MT
Sidney Auto Supply: 406-433-6430 • Farm & Home: 406-433-3400
Mon-Fri: 7:30am - 5:30pm • Sat: 7:30am - 2pm

FARM AND HOME
HARDWARE, HOUSEWARE,
YARD, GARDEN & JANITORIAL
SUPPLIES



RTC
Smarter. Better. Faster.

www.RTC.coop
Phone • Internet • TV



Roundup

A DARN GOOD
LITTLE
NEWSPAPER!

Sidney, Montana
406-433-3306



Reynolds MARKET


Shops At Fox Run
404 N Central • Sidney, MT
Open Daily 6am - 10pm
406-433-2305
reynoldsmarket.com



HELENA

HELENA CHEMICAL COMPANY

1164 Hwy 1806 W
PO Box 1229
Watford City, ND
701-444-3772




Sidney Sugars
INCORPORATED



Miller's Garbage Service

Savage, MT
406-776-2334



Loyal Order of Moose

Williston Lodge No. 239
101 W. 2nd St. • Williston, ND • 701-572-2342



Eagle Country Ford

"Experience the Eagle Country Difference!"

Sales & Service
Mon-Fri: 8am - 5pm
Sales
Sat: 9am - 1pm
215 East Main St • Sidney
1-800-482-1810 • 433-1810

We Salute all the Farmers and Ranchers!

HURLEY'S OILFIELD SERVICES

Porta Potties • Potable Water • Loaders • Communications • Backhoe • Trucking • Skid Houses

Dispatch: 701-844-1234 / Fairview, MT

Williston Basin Speedway Fall Roundup, Sept. 19-20

Sept. 19 Results, Sept. 20 Rain Out

IMCA Hobby Stock A Feature 1

1st Place: Brad King, Minot, ND, 43
2nd Place: John Flory Jr, Williston, ND, 18
3rd Place: Riese Dignan, Kenmare, ND, 144
4th Place: Kyler Satran, Minot, ND, 22
5th Place: Alex Tvedt, Minot, ND, 103
6th Place: Dennis Breivik II, Williston, ND, 11B
7th Place: Doug Thompson, Minot, ND, 5

IMCA Modified A Feature 1

1ST Place: Chris Schroeder, Williston, ND, 6
2nd Place: Jason Wolla, Ray, ND, 27W
3rd Place: Wayne Johnson, Minot, ND, 4J
4th Place: John Flory, Williston, ND, 19
5th Place: Travis Hagen, Williston, ND, 14T
6th Place: Zach Dockter, Norwich, ND, 6Z
7th Place: Kyler Jeffrey, Williston, ND, 72X
8th Place: Jeremiah LaDue, Trenton, ND, 1
9th Place: Dillon Price, Glendive, MT, 308
10th Place: Tim Dignan, Kenmare, ND, 5D
11th Place: Joren Boyce, Minot, ND, 67
12th Place: Tony Marsh, Dickinson, ND, 80
13th Place: Jake Schroeder, Williston, ND, 22K

IMCA Northern SportMod A Feature 1

1st Place: Erik Laudenschlager, Minot, ND, 49
2nd Place: Brady Bjella, Williston, ND, 99
3rd Place: Darren Medler, Minot, ND, 74
4th Place: Kelly Henderson, Minot, ND, 24
5th Place: Makenzie Hagen, McGregor, ND, 10Z
6th Place: Brock Beeter, Minot, ND, 48
7th Place: Robby Rosselli, Minot, ND, 0
8th Place: Jeff Bieber, Fairview, MT, 89
9th Place: Chris Anderson, Williston, ND, 57
10th Place: CJ Peterson, Richey, MT, 14P
11th Place: Alex Bashner, Williston, ND, 8B
12th Place: Rick Hanson, Williston, ND, 24X
13th Place: Tanner Weeks, Plentywood, MT, 00
14th Place: Tyler

Weeks, Plentywood, MT, 44
15th Place: Dennis Chapman, Minot, ND, 27
16th Place: Tom Dale-ske, Sidney, MT, 91

IMCA Stock Car A Feature 1

1st Place: Joe Flory, Williston, ND, 20
2nd Place: Dalton Flory,

Williston, ND, 20F
3rd Place: Mike Hagen, Williston, ND, 27X
4th Place: Chris Ellis, Williston, ND, 421

5th Place: Nick Lund, Crosby, ND, 13L
6th Place: Justin Bachmeier, Williston, ND, 16B
7th Place: Joren Boyce,

Minot, ND, 67
8th Place: Jeremiah LaDue, Trenton, ND, 10J
9th Place: Blaine Durward, Trenton, ND, 12D

Bond Family

AUCTION

Saturday October 10th, 2020 10:00 am MT

For more information and pictures please visit;
www.montanaauctioncomp.com

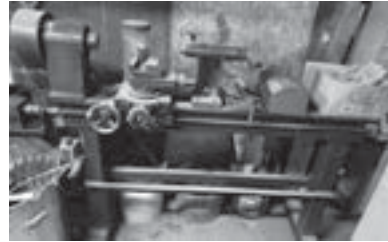
Shop Supplies and Tools

Central Machinery metal lathe 230v
Wood lathe 120v
Hobart 160 amp stick welder
Electric 1500 psi pressure washer
3 way air compressor
Craftsman socket set
Electric jig saw
Drill doctor
Bench vise
Husky tool box
Craftsman Hammerhead auto hammer
Large band saw
Delta band saw
Commercial scale
2 ton chain hoist
1/2" air drill
Chainsaw sharpener
Tap and die set
Large drill bit set
Steam and scrub
Block and tackle
Binder
Battery Chargers
Weed Trimmers
Tow Ropes
Jumper Cables
Welding Helmets
Hardhats

Outdoors

8 gun sentinel safe
Coleman propane stove
Hitch mounted bike carrier
Gold mining pans
Bullet Chronograph
Large meat saw
New meat slicers
Malibu picnic set
Electric turkey fryer
Tackle box
Spotting scope tri pod
Snow shoes
Boot dryer
Electric snow blower
Fishing pole case
Metal detector
RCBS prep center
Reloading supplies
Folding patio tables
Ceiling mount bike rack
Fly tying supplies
Butcher shop tape dispenser
Golf Clubs

TERMS AND CONDITIONS:
Cash or good check. All items sold AS IS, WHERE IS.
No warranties are expressed or implied by Montana Auction Company, its auctioneers, or the sellers. Any and all statements and announcements made on sale day by auctioneers and owners take precedence over any and all advertising. Information given is believed to be true and correct to the best of the owner's knowledge. All potential buyers are urged to inspect items prior to bidding. All sales are considered final and buyers are responsible for purchased items once marked sold. Not responsible for accidents.



Covid 19 notice: When attending the auction please follow social distancing guidelines recommended by the State of Montana. Feel free to wear a mask. We ask if you are not feeling well or have a compromised immune system, please stay home for your own safety and the safety of others. We will be happy to take phone bids if you are not able to attend the auction. Thanks.

Lunch will be available!

Directions from the Terry, MT exit; travel north 4 tenths of a mile to Spring street, turn west at the convenience store and continue to Courtenay Ave. Auction site is on your left.

Household and Antiques

Heavy vintage dining table
Rolltop desk
Commercial sewing machine
Deep freeze
(2) Chest of drawers
Lots of shelving units
Single bed frame
Electric pressure cooker
Indoor turkey fryer
Theater popcorn popper
Hamilton Beach deep fryer
Kitchen Aid food processor
Honeywell heater
Dishes
Silverware
Baking scales
Superlock sewing machine
Sewing supplies
Ham radio supplies
Old library desk
Computer desk
Religious decor
Glassware
Antique bibles
Cookbooks and music books
Nikon camera
Briefcases
New stationary bike
Antique dishes
Antique poker chips
Brooklyn lanterns
Antique watch
Antique wooden statue of Joseph and Jesus
Silver candelabra
Wall clock
Cordless spotlight
Large crockpot
100s of books
Wood rocking chair
Holmes fan
Coffee makers
Electric knife sharpener
Hurricane spin scrubber
Electric laminator
Turkey roaster and accessories
Bella 8in1 grill station
Paper cutters
Holepunches
Coin sorter
Kodak projector
Clipboards and file folders



MONTANA AUCTION COMPANY
DAN GOSS, AUCTIONEER
406-480-2778



THE BUSINESS ROUNDUP

Reach 26,500 Readers in the Entire MonDak Region

Call: 406-433-3306 or email: info@roundupweb.com

visit www.roundupweb.com/directory for direct links to company websites & locations

\$25⁰⁰ WK

NICK JONES REAL ESTATE
TRUCK ROUTE SOUTH, SIDNEY
OR CONTACT ONE OF OUR AGENTS:

Justin Jones 406-480-9525
Jerrian Franzen 406-478-3773
Dennis Wick 406-480-1550

www.NICKJONESRE.COM

Signs OF SIDNEY

Signs • Banners
Vehicle Lettering
Vinyl Letters
Location Signs
Decals
with High Tack Option

224 6th St. SW, Sidney • 406-433-2476 • signsofsidney@midrivers.com

• Gift Bouquets • Tuxedos • Balloons
• Fresh Made Flavored Popcorn
• Holiday & Solid Tableware

PARTY CENTRAL & MAIN STREET POPCORN
105 E Main • Sidney | 406-433-4386

High Caliber Sports & Athletics
One Location To Serve You Better!

440 N Central Ave • Sidney, MT
Shops at Fox Run | 406-433-1800
Mon-Sat: 9am - 6pm • Sun: 10am - 4pm
www.highcalibersportsinc.com

Network • Automation • Smart Home • AV Solutions

ELECTRICLAND

225 2nd Ave NE • Sidney, MT | Mon - Fri: 9am - 5pm | 406-433-4370

DOORBUSTN
Portables & Septic Service, LLC

Office: (406) 433-7586
Fax: (406) 433-7596
Service: (406) 489-0915 • Troubleshooting

Blaine Rogers – Owner | PO Box 1003 | 34980 Hwy 23 • Sidney, MT

Sidney LUMBER
Mon-Fri: 8am - 3pm
1420 5th St SW • Sidney, MT
406-433-7767 • By Appt: 406-489-1880

WE WILL NOW CONTRACT YOUR ENTIRE JOB!

FOX HILLS GOLF COURSE

New 18-Hole Course:
• 12-Playable: now open
• Driving Range: now open
• Fox Hole Restaurant: open daily 11am - 10pm
Catering Available! Contact us to book parties, banquets, weddings, receptions, corporate meetings, etc.

701-842-2074 | 3104 4th Ave. NE | Watford City, ND

Customer Service is Our #1 Priority

Border
STEEL & RECYCLING, INC.

Sidney: 35002 CR 123 • 406-433-7737
Glendive: 2703 W. Towne St. • 406-377-4398
Plentywood: Hwy 16 East • 406-765-2624

Williston: 13896 W. Front St. • 701-572-5493
Miles City: 12 Peggy Lane • 406-874-7428

Savage Homecoming Highlights



Savage held their homecoming last week. The Savage High School class of 2024 are “Working on a Victory” during the homecoming parade on Sept. 19. Pictured are (L-R) Brooke Reuter, Karley McPherson, Jaidyn Alvstad, Connor Lyons and Cade Tombre.



Brooke Reuter hits the ball past two Bainville players during set two of the homecoming volleyball game on Saturday. Savage beat Bainville three sets to zero 25-11, 25-18 and 25-10.

Retirement

2209 124th T Ave NW, Watford City, ND

AUCTION

TIMED ONLINE

OPENS OCT. 7

CLOSES: THURSDAY, OCTOBER 15 | 10AM

2020

PREVIEW: Monday, September 28 - Thursday, October 15 | LOADOUT: Thursday, October 15 from 9AM-5PM

INCLUDES: Semi Tractors, Side Dump Trailers, Vacuum & Crude Trailers, Dry Van Trailers, Pickups, Truck Attachments & Parts

STEFFES

SteffesGroup.com

Steffes Group, Inc., 2000 Main Ave East, West Fargo, ND 58078 | 701.237.9173

NBT ENTERPRISE (NICKLEBACK) | Shawn, 801.319.5089

or Terry Moe at Steffes Group, 701.237.9173 or 701.580.2426

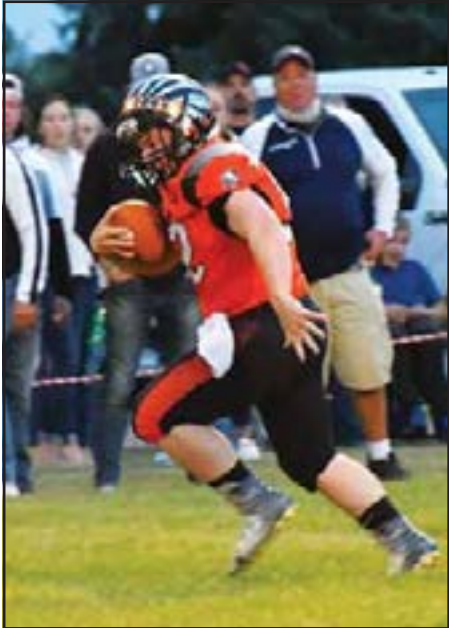
TERMS: All items sold as is where is. Payment of cash or check must be made sale day before removal of items. Statements made auction day take precedence over all advertising. \$35 documentation fee applies to all titled vehicles. Titles will be mailed. Canadian buyers need a bank letter of credit to facilitate border transfer. Scott Steffes ND&I



Savage senior Sloan McPherson breaks through the banner to start the homecoming football game Saturday night. Savage beat Bainville 80-8.



Caesn Erickson runs back an interception for a touchdown in the second half.



Gentry Conradsen scores on a 61 yard run in the first quarter of the homecoming game versus Bainville.

We Welcome You!

THE BEST ARE HERE!

Come And See The

2020 NDRA CHAMPIONSHIP FINALS RODEO

MCKENZIE COUNTY FAIRGROUNDS

FRIDAY, SEPT. 25 • 7 P.M. SATURDAY, SEPT. 26 • 6 P.M.

WATFORD CITY, ND

- Vendors
- Concessions
- Beer Gardens

Red Rock Auto Presents

Motor Trends

Truck of the Year for 2019 & 2020

The Ram 1500 & Heavy Duty Trucks

RED AUTO ROCK

1212 4th Ave. NE • Watford City, ND • 701-842-4070

www.redrockauto.com

Sales Hours

8 a.m. - 7 p.m. Monday - Thursday

8 a.m. - 6 p.m. Friday

8 a.m. - 5 p.m. Saturday

Stockman Bank

SAVINGS CLUB

We are proud to partner with ZooMontana and the opening of the Stockman Bank Sloth Exhibit.

SLOW AND STEADY SAVINGS WITH STEVIE!

INTRODUCING OUR NEW STOCKMAN BANK SAVINGS CLUB FOR KIDS 10 & UNDER

- Receive a special Coin Bank with your initial opening deposit*
- Save \$100 and take home your very own cuddly, stuffed Stevie!

Montana’s Brand of Banking

*Requires a Stockman Bank Savings account. Amount needed to open account and minimum balance required is waived for customers 18 and under.

Member FDIC | Equal Housing Lender