



The Roundup

PRSR STD
U.S.
POSTAGE
PAID
The Roundup

(406) 433-3306 or 1-800-749-3306
Fax (406) 433-4114
e-mail address:
info@roundupweb.com
www.roundupweb.com

Business Office:
Located at 111 West Main
Sidney, MT

Mailing Address:
P.O. Box 1207
Sidney, MT 59270

Wednesday, February 20, 2013

Volume 39 • Number 1

Rockin' Your Heart Out Cattlemen's Ball To Be Held Saturday

By Ashley Harris

The MonDak Area Stockgrower's Association has partnered up with the Foundation for Community Care to bring the area a night of rockin' good fun, music and dancing. The 1st Annual Cattlemen's Ball will be held Feb. 23rd at the Richland County Fair Event Center. There will be a social at 6:30 followed by a prime rib dinner catered by The Ranger Lounge at 7. The live band will start at 9 with plenty of dancing until midnight.

The evening will give guys and gals a chance to get all dressed up and go out, as the event is formal/semi-formal. The evening will also include a silent auction, live auction and door prizes. The cost for the evening is \$45, which covers the prime rib dinner and an entry for door prizes, one of which is chaps custom made by Wade McMillen. Attendees must be at least 21 to attend, as alcohol will be available. Tickets are available for purchase at The Lucky Buckle and at the Foundation for Community Care, but they are going fast and only 350 tickets will be sold.

Some people in the area may remember the Cattle Crawl which was held in 2008, 2009 and 2010. The Cattle Crawl was a chance for locals to sample beef dishes at a variety of local restaurants. The event was held to showcase beef and its healthy benefits, which is also the focus of the new Cattlemen's Ball.

Members of the MonDak Area Stockgrower's Association had been talking about doing an evening like this for a while, and finally decided to just do it. The event aims to increase awareness of heart health and the health benefits of beef in a diet. They invite the whole community to come together to have fun and support a cause, as proceeds will go to the American Heart Association and to the Foundation for Community Care to support local healthcare. Businesses and individuals have an opportunity to be a sponsor to support the cause with three different levels of sponsorship including the sirloin level at \$500, the New York strip level at \$1000, and the prime rib level at \$1500. Sponsorships will include a number of recognition and advertisement opportunities throughout the evening as well.

Marci Albin, member of the MonDak Stockgrowers Association, stated, "It's not just for farmers and ranchers. Put on your dancing shoes, cocktail dress, and come out for a rockin' good time."



One of the door prizes available at the Rockin' Your Heart Out Cattlemen's Ball are these custom chaps, made by Wade McMillen.

The Depot to Re-open

By Ashley Harris

Since the fire that nearly destroyed the building on October 8th, The Depot has been working to re-open the local eating establishment. The inside of the building was a total loss due to fire, heat and smoke. Owner Mark Wilkinson stated, "All that was left was the shell."

Many updates have been made to create a more modern and relaxing atmosphere. The dining area appears larger with the kids' game room separated by a new large bar-style table for parties. Also added to the dining room are 3 large flat-screen TVs, tray ceilings, new games for the kids, and numerous tables for plenty of pizza lovers. As Wilkinson stated, "New look, same old Depot."

As it is a popular place, the menu did not need to be changed but they did make one addition in honor of the local firemen. There is a new Fireman's Pizza which will include sausage, pepperoni, bacon, onion, jalapenos, sauerkraut, pineapple and cayenne pepper.

The dining room is not the only thing that has changed, as they have doubled the size of the casino and added a side entrance. The casino has all new games and numerous flat screen TVs.

The Depot will re-open Thursday, Feb. 21, as long as

everything goes as planned. They will be open Monday through Thursday from 10:30

until 9:30, Friday through Saturday from 10:30 until 10:30, and Sunday from

10:30 until 9. Come on out and check out the "new" Depot.



The new look behind the counter at The Depot.



The front door to The Depot, which has a new entry way.



The Depot has a new modern look to it.

Gossett Chiropractic Arts to Open Watford City Office

Dr. Michael Gossett and wife Jill (Wagner) are happy to announce the expansion of their Chiropractic business to Watford City. The main branch of Gossett Chiropractic has been in business for five years and is located in Bismarck, ND.

At Gossett Chiropractic Arts, learn how chiropractic care can change your life using technology used by NASA. Their technology helps identify the true underlying cause to your health issues and nervous system disturbance. Their goal is to help your nervous system regain the ability to heal itself and regulate all body functions, so you can live your life to its fullest.

They will be taking appointments at the Watford City location two days a week, every other week starting Feb. 27 and 28.

Gossett Chiropractic Arts branch clinic is located at 216 6th Ave. S.E., Watford City, ND 58854, on the truck bypass. Call to schedule your appointment at (701)-250-2182. For more information, visit www.gossetatchiropracticarts.com.

Beat the Spring Rush Sale



Take Advantage of Low Prices Now for Delivery in the Spring!



3820 6th Ave W • Williston
Next to Walmart Tire Center 701-774-5310

InstaLodge Opens Phase I



InstaLodge features fully equipped modern kitchens in each unit.

By Tie Shank

After months of hard work and uncooperative weather, InstaLodge will be opening phase I of their community in Arnegard. Approximately 200 rooms became available February 8th. The 30,000 square foot lodge, 4000 square foot health club and 24 hr food service with chef prepared meals are expected to open in April along with an additional 200 rooms.

Each building in Phase I has four bedrooms, a large kitchen and combination living/dining room, washer, dryer, stove, dishwasher, refrigerator, microwave, toaster and fully equipped kitchens. The rooms are all private with private bathrooms.

Ruben Carrasquillo, Operations Director, states, "We are a housing community. We understand the focus oil companies have on safety and how much they value

their human resources. We are proud that our values closely align with theirs in this respect and in many others like the shared commitment we have to the communities we serve. We are hospitality professionals and we understand this business very well. Our goal is to partner with all companies involved in exploration and drilling in this region. . . and are confident we will be a proper extension of their business by providing excellent hospitality services that will enable them to attract the best employees and contractors."

Carrasquillo also feels it's very important for people to know that InstaLodge is not just a "great escape" for

oil field workers to come back to every night and enjoy a comfortable night's sleep and a safe environment where they can recharge, but it is also a great place for any person or groups visiting this part of the country.

"One simple phone call or email will connect you to a very professional team member that will immediately respond to any and all inquiries," stated Carrasquillo.

To make a reservation or to inquire about lodging call 1-(800)-769-3874

To inquire about employment, apply online at www.InstalodgeND.com or apply in person for an immediate interview.

COMING SOON...

NEW SHIPMENT OF



Assault Rifles

NEW SHIPMENT OF AMMO HAS ARRIVED!



Hours: 9am-6pm Mon-Fri
9am-4pm Saturday
214 S. Central Ave. • Sidney
Across from Centre Theatre
406-433-1800

Richland County Injury Prevention Team Would Like to Acknowledge and Thank MDU

Submitted by Mary Friesz

During 2013 the Richland County Injury Prevention Team will recognize a local business each month that promotes responsible, safe and positive practices with their employees. The team believes that safety polices implemented in the workplace not only create a safe work environment but also help keep our community safe. Employees not only use these practices at work but take them home, which make them great role models in our community.

Montana-Dakota Utilities implemented a distracted driving policy that prohibits sending or reviewing text messages while driving a company vehicle. Also, if it is necessary for an employee to place or receive a cellular phone call at any time while operating a vehicle, the employee will safely drive the vehicle off the road to a location where the vehicle can be stopped without risk to the employee or a third party.

"I believe our distracted driving policy is a good example of how we keep our employees safe, but also how that commitment ensures the safety of the public as a whole," said Elisa Chapin, safety manager for Montana-Dakota Utilities. "Focusing on driving tasks should be the driver's first priority."

The injury prevention team would like to applaud the efforts of Montana-Dakota Utilities and their employees for caring about the safety of our community. By putting the policy into action they are encouraging good driving habits which in turn will be paid forward when their drivers model good driving practices to others who look to them as a role model.

Thank You Montana-Dakota Utilities for all you do in support of our community.

If your business or a business you know has a Seat Belt Policy, a No Usage Cell Phone Policy or other policies that help make Richland County a safer place to enjoy life please contact Mary Friesz, Richland County Injury Prevention Specialist at the Richland County Health Department 433-2207. The Richland County Injury Prevention Team can also assist you in creating implementing policies.

Please join us for our Bainville Dollars for Scholars

Dinner-Talent Show and Silent Auction!

Saturday March, 16th @ 6 P.M.

Doors open at 5:30 P.M.

Location Bainville School

Tickets on sale, call Bainville School @

769-2210 To Purchase your Ticket!

Eastern MT Impact Coalition Launches Energy Impact Study

Diverse group working to positively and proactively embrace opportunities and challenges of energy development.

Submitted by Leslie Messer

The Eastern Montana Impact Coalition (Coalition) last week announced via meetings with eastern Montana legislators and government stakeholders that it has launched a study to identify how and when eastern Montana communities will be impacted by accelerating energy development. The study's goal is to help local communities understand the timing and magnitude of these impacts and determine the priority issues to be addressed and investments required to benefit from energy development and build the foundation for sustainable growth. Formed early in 2012, the Coalition includes a unique collaboration between four economic Districts, including Great Northern Development Corporation (SEMDC). These Districts collectively represent 16 counties, which encompass approximately 43,000 square miles of eastern Montana (about the size of New York State).

"We are blessed to have large untapped energy reserves, but need only look across the border to North Dakota to see how rapid energy development can dramatically impact local communities. Energy development does provide tremendous opportunities for our communities but requires government and industry to work in partnership to achieve positive long term growth through thoughtful investments in infrastructure, housing, public safety, job training, education and healthcare. Through this study and in collaboration with our communities, the state, federal government and the energy industry, we

can anticipate, prepare, respond and embrace energy development; creating a detailed road map that prioritizes issues, engages local communities and anticipates the needs of future Montanans," said Leslie Messer with the REDC. "With the advent of new technologies in oil extraction, several regions across the United States are experiencing explosive energy development but none have undertaken an effort such as this that involves federal, state and local governments as well as local communities, businesses and citizens," added Martin DeWitt with GNCD. "Working together we can insure we are prepared for and able to take advantage of all that energy development has to offer our state. We want solid, sustainable communities that can thrive now and in the future and that we can all be proud of."

To conduct the study, the Coalition retained a multidisciplinary team of experts, from Montana and beyond. This team, which includes civil engineers, land use planners, economists, real estate development advisors and economic development specialists, is first working to define the impacts and then will collaborate with local communities and other stakeholders to create a detailed road map that prioritizes investments needed to create the infrastructure necessary to build quality communities that support growth and long term job creation. These investments will leverage the revenue from energy resources to generate long term returns for local communities and the entire state while simultaneously planning for future generations.

According to Jason Rittal of EPEDC, the initially

funded portion of the study will include: Mapping the location, size and timing of anticipated energy development; Projecting the impact this development will have on infrastructure, jobs, housing and public safety and healthcare as well as a variety of community land use issues; Conducting education and outreach events with impacted communities; Informed by the vision and concerns of impacted communities, create a high level road map to prioritize investments that will mitigate impacts and support future growth.

This consulting team is being led by Jones, Lang, LaSalle, one of the world's largest real estate services firms and is further supported by a core team which includes; SmithGroup JJR, one of the nation's leading architecture, engineering and planning firms; Allied Engineering, a civil engineering firm based in Bozeman that has worked extensively with energy impacted communities in North Dakota and Eastern Montana; and Ecolibrium, a multidisciplinary consulting company based in Bozeman.

For further details about the Coalition and this study, please contact a Coalition member: Leslie Messer, REDC, 406-482-4679, email: lmredc@midrivers.com; Martin Dewitt, GNCD, 406-653-2590, email: martin@gncd.org; Jim Atchison, SEMDC, 406-748-2900, email: semdc@bhwi.net; Jason Rittal, EPEDC, 406-698-3255, email: jrittal@midrivers.com.



The contract signing between the Eastern MT Impact Coalition (EMIC) and Jones, Lang, LaSalle. Back row (L to R) Leslie Messer, REDC, Jason Rittal, EPEDC, Jim Atchison, SEMDC. Front row (L to R) Martin DeWitt, GNCD, and Bob Hunt, Jones, Lang, LaSalle.

WHETHER IT IS VERY SIMPLE, OR ELEGANTLY SOPHISTICATED, A LASTING MEMORIAL REPRESENTS A LIFE THAT HAS TOUCHED US



Contact us now so we can help you find a monument or grave marker to dedicate to your loved one.



Fulkerson Funeral Home
It's All About Saying Goodbye

315 Second St. NW Sidney, MT 59270 406.488.2805

www.fulkersons.com • email: ffh@fulkersons.com

Correction

The story entitled "Western Building Center Opening in Culbertson" that appeared on page 1 of the Feb. 13, 2013 edition of The Roundup contained the incorrect website address, the correct website address for Western Building Center is www.westernbuildingcenter.com. We sincerely apologize for any inconvenience this error might have caused.

TOP LINE ENGINEERING

CIVIL ENGINEERING
LAND SURVEYING

LAND PLANNING
SITE DEVELOPMENT
& ENTITLEMENTS

Arizona Office
4711 East Folsom Drive, Suite 354
Mesa, Arizona 85215
Phone: 480.969.3822

Montana & North Dakota Office
323 E. Main St., Box 884
Sidney, Montana 59270
Phone: 701.570.2844

Email: info@toplineengineering.com | Web: www.tlengr.com

The Last of the 2012s! At Factory Invoice

-Ford Rebate!



1 F150

1 2012
Ford Edge



3
Superdutys



Trades Welcome

Must Finance with Ford Motor Credit to Maximize rebates



See Jackson, Peggy, or Keith

Experience the Eagle Country Difference!

215 E. Main • Sidney, MT • 406-433-1810 • 800-482-1810



Jackson White



Peggy Franzen




Keith Bostrom

For all your Farm/Ranch, Recreational, Residential, and Commercial needs.




Alan Seigfreid
Amanda Seigfreid

Jim & Janice Knudsen 120 2nd St. N.E. • Sidney Mt. 59270
Broker/Owners (O) 406-433-3010 • (C) 406-489-3010
email: alans@midrivers.com
Website: www.missouririverrealty.com



Yellowstone Chiropractic Clinic
(406) 433-4757 222 2nd. Ave. SW
1-866-433-4757 Sidney, MT 59270



Dr. Ryan Laqua
Chiropractic Physician

- Sports Injuries • DOT Physicals
- Personal Injuries & Pain Conditions

Heaven to Earth Church

We're New, Fun and Exciting...
But We Still Stand For The Word of God

Service Sundays, 10:30 am
Microtel Inn, Sidney, MT

Fri, Feb 22, 7:30 pm • Sat, Feb 23, 2 pm
Sun, Feb 24, 10:30 am

David Kraft: Country Gospel Singer & Evangelist
Presenting: Creationism vs Evolution

Christian Based Counseling
• Addictions • Depression
• Marriage • Pre-marriage

Rev. Mike Shaffer
406-480-5827 • countryboy925@gmail.com



Do you have news or photos from McKenzie County you would like in The Roundup?

CONTACT:
Kathy Taylor in Watford City
701-842-6188

STATISTICS

Lake Water Level Report

Sakakawea Fort Peck

Current Elevation.....	1827.8.....	2222.9
Last Week's Elev.	1828.0.....	N/A
One Year Ago.....	1838.3.....	N/A
Release For Day (C.F.S.).....	22,600.....	7,000

Watford City Weather Data

Source: North Dakota Agricultural Weather Network

Date	High	Low	Precip.
Feb. 11.....	29.....	15.....	T
Feb. 12.....	31.....	19.....	0
Feb. 13.....	37.....	30.....	0
Feb. 14.....	36.....	19.....	0.08
Feb. 15.....	29.....	9.....	T
Feb. 16.....	32.....	25.....	0.03
Feb. 17.....	43.....	27.....	0

Sidney Weather Data

Source: MSU Eastern Agricultural Research Center

Date	High	Low	Precip.
Feb. 11.....	34.....	18.....	0.00
Feb. 12.....	41.....	22.....	0.00
Feb. 13.....	40.....	31.....	0.00
Feb. 14.....	31.....	17.....	T
Feb. 15.....	N/A.....	N/A.....	N/A
Feb. 16.....	N/A.....	N/A.....	N/A
Feb. 17.....	N/A.....	N/A.....	N/A
Average YTD Precipitation.....			0.54

Radon Test Kits Available for Richland County Residents

Submitted by Stephanie Ler

Ten free radon test kits are available for Richland County residents. Test kits will be distributed on a first come, first served basis, and must be reserved by calling Stephanie Ler at 406-433-2207.

Radon is a colorless, odorless, radioactive gas found in many homes. Radon comes from the breakdown of uranium, which is found naturally in soil, and enters the home through tiny cracks and holes in the foundation. Studies have shown that continued exposure to high levels of radon gas increases the risk of developing lung cancer. Radon levels in a home

can only be identified by radon testing.

In an effort to develop a more comprehensive radon program in Montana, the Department of Environmental Quality has partnered with Accustar Labs to distribute test kits and retain the data collected from each test kit.

For questions or to reserve a radon test kit, please contact Stephanie Ler at 406-433-2207.

OBITUARIES

**Helen Gierke, 86,
Bismarck, ND
(formerly of Sidney)**

Funeral services for Helen Gierke, 86, of Bismarck, ND, formerly of Sidney, MT were at 10:00 a.m., Saturday, February 16, 2013 at Pella Lutheran Church in Sidney, MT with Pastors George Karres and Charlane Lines officiating. Internment was in the Richland Memorial Park Cemetery, Sidney, MT under the direction of Fulkerson Funeral Home of Sidney. Remembrances and condolences may be shared with the family at www.fulkersons.com.

Helen died on Monday evening, February 11, 2013, at the Missouri Slope Lutheran Care Center in Bismarck, ND.

**Darnell Sparks, 52,
Froid, MT**

Funeral services for Darnell Sparks, age 52, of Froid, MT, will be held at 1:00 p.m., Saturday, February 23, at Fulkerson Memorial Chapel in Sidney, MT. Darnell died Sunday evening, February 17, 2013 at her home near Froid, MT, after a long illness with cancer. Remembrances and condolences may be shared with the family at www.fulkersons.com.

Are You Too Busy?

Submitted by

Community Wide Conference Planning Committee

It certainly is a busy time for all of us in Richland County. Many businesses are struggling with fewer employees to do the same or even increased amounts of work. It is a time that "Time Management" skills may prove to be, more than ever, helpful to review and implement.

In exercising our time management skills, it is advised to first assess where you are currently spending your time. Our time can be categorized into four areas: 1) those tasks that require our urgent attention and are very important such as deadlines and a crisis, 2) those tasks that are somewhat urgent but not necessarily as important such as some phone calls, meetings, etc. 3) those tasks that are not very important and not very urgent but seem easier to find the time to do such as pleasant activities, the easier tasks of our jobs or 4) those tasks that are important but not urgent such as relationship building, planning activities, and growing new opportunities for your work site.

It is not unusual when we assess where we spend most of our time we find that a dedicated person will be spending most of their time on urgent tasks, both important as well as not important. But many times, it is felt that a lot of people do not spend enough time in the category of tasks that are important but not urgent such as planning. By choosing not to find time to spend on activities such as planning and prevention, you may be losing out on an opportunity to get an investment of your time. For example, making a little more time in your schedule to plan for the future may reap many benefits in the future for you and your company.

Every citizen of Richland County as well as any county employee, or business owner is being a given a chance to put their true time management skills to the test. You have an opportunity arising in March to spend a fraction of your time on an activity that is an investment in not only your job, or business but in your family, neighbors and friends future as well.

Please actively participate in the 5th Annual Community Wide Conference to be held **Monday March 18th 5:00 to 7:30 pm & Tuesday March 19th 8:30 am to 4:00 pm** as a "Richland County Open House" platform held at the Event Center in Sidney. Please plan to attend this **FREE** event, bring a friend or two. To register (for head count for food) or for more information go to www.richland.org.

If you are too busy to attend this Conference then you may just miss a chance to invest in the future of Richland County and help to address those very issues causing you to be "too busy" to attend.



EVENTS

SEND US YOUR EVENTS!

THE ROUNDUP: PO Box 1207, 111 West Main,
Sidney, MT 59270
406-433-3306 Fax: 406-433-4114
Email: classads@esidney.com

Richland County

Events in Sidney unless otherwise listed. MT Zone.

Thurs., Feb. 21

12 p.m.— The Sidney Kiwanis Club meets every Thursday at noon at the Elks Lodge.

12 p.m.— Savage Senior Center will host a meal.

12:45 - 1:45 p.m. — Sidney Senior Citizen Center will be having a potluck lunch and cards. For more info. call 406-433-8077.

5 p.m. — TOPS, Crestwood NW entrance, Weigh-ins 5-5:30 p.m., Meeting 5:30-6 p.m.

6:30p.m.— Sidney Moose Lodge Pinocle games.

7 p.m. — Interfaith Community Outreach will host a Coffee Hour at the LDS Church, 1215 5th St SW.

8 p.m. — NA meeting, Millers' Corner banquet room.

Fri., Feb. 22

— Sidney Soccer Assoc. Registration Deadline.

11:30 a.m. — Sidney Senior Citizen Center will be hosting a meal. For more info call 406-433-8077.

Sat., Feb. 23

9 a.m. & 7p.m. — AA Group Trinity Lutheran Church Education bldg.

10 a.m. — Gamblers Anonymous at Millers' Corner.

10 a.m. - noon — United Methodist Free Store is holding their grand re-opening celebration. For more info call 406-433-3110, 406-433-3151 or 406-951-1626.

6:30 p.m. - 9 p.m. — Cattlemen's Ball at the Richland County Event Center. The live band starts at 9 p.m. Tickets are available for purchase at The Foundation For Community Care for \$45 per person.

All Day — AAU Wrestling Tournament at Sidney High School Gym.

Sun., Feb. 24

1 p.m. — Savage Senior Center will be hosting cards, coffee, and potluck at 1pm.

6:45 p.m.— Early Bird Bingo at the Moose Lodge regular bingo at 7 p.m.

7 p.m. — AA Group Trinity Lutheran Church Education bldg.

Mon., Feb. 25

11:30 a.m. — Sidney Senior Citizen Center will be hosting a meal. For more info call 406-433-8077.

Noon — AA Group Trinity Lutheran Church Education bldg.

Tues. Feb. 26

7 p.m. — AA Group Trinity Lutheran Church Education bldg.

9 a.m. - noon — Senior Commodities distribution will be at the back door of the Nutter Building 123 W. Main, Sidney.

Wed., Feb. 27

11:30a.m. - 1p.m. —The Sidney Women of the Moose will serve soup until gone.

6 p.m. - 8p.m. — Interfaith Community Outreach will host a free meal and get acquainted at the Assembly of God church, 414 E. Main St.

7 p.m. — Beginners Square Dancing at Sidney High School, come as you are.

McKENZIE COUNTY

Events in Watford City unless otherwise listed. CT Zone.

Wed., Feb. 20

8 p.m.— Al-Anon, Sanford Room, McKenzie Co. Public Library.

Thurs., Feb. 21

8 p.m.— AA Group, Northern Pump & Compression. Call 770-3603 or 770-2675 for directions or ride.

Wed., Feb. 27

4 p.m. - 7p.m. — Spring Show at the Watford County Civic Center.

OTHER SURROUNDING COUNTIES

Feb., 23

11 a.m. - 6 p.m. — Or until out of food, 80th Annual Lutefisk and Meatball Dinner Hosted by First Lutheran Church, Fellowship Hall, Williston, ND.

View all monthly events on our calendar at www.roundupweb.com.

Housing for Essential Services Personnel Will Soon be Available

By Tie Shank

Wolf Run Village in Watford City will soon house many essential services personnel including: emergency medical personnel, police officers, teachers and others who are committed to serving the needs of the community.

42 apartments: 24 one bedroom units and 18 two bedroom units will be constructed to the highest standards and will be available to rent furnished or unfurnished at affordable rates, some as early as August

2013. "The goal is to get the school teachers out of the portable trailers and into apartments before the new school year begins," states Bakken Housing Partners Sales and Property Manager, Katie Walters.

Walters advises, "We

are hoping to break ground in approximately three weeks."

In addition to the apartments, a 15,000 square foot daycare facility will be opening before the end of the year. Wolf Pup Daycare Center will be a state-of-the-art facility

with the most modern equipment. It will exceed the state daycare standards and will have the ability to take care of up to 200 children.

Gene Veeder, Executive Director of the McKenzie County Job Development Authority, comments "We've

been trying for a number of years to put a daycare facility like this together and we're hoping to have it completed before year end 2013. This will help enable some people to get back to work and with the affordable housing, we're finally able to offer these service workers a decent place to live where they can bring their families and stay."

Wolf Run Village will be located in the heart of Watford City, directly adjacent to the town's playground

and water park and opposite the Watford City elementary school. The project is made possible by the generous donations of the Roughriders, 2EP Resources, Whiting Oil & Gas, Power Fuels and MBI Energy Services.

The Board of Directors continues to research grants and welcomes donations to complete the much needed project.

If you'd like information on this project or would like to make a donation, please contact 701-580-6684.



United Methodist Free Store Grand Reopening Feb. 23

The United Methodist Free Store is holding their grand re-opening celebration on Saturday, Feb. 23rd. The store suffered water damage from a roof leak in January, but has re-located to different rooms in the church and is ready to serve the community once again. A special feature of this day will be the Prom Shop, with prom dresses, shoes and accessories ready to be chosen for that special dance this spring. The Free Store is located at Lonsdale United Methodist Church, 205 3rd Ave. S.E. in Sidney, across the street from Central School. All items of clothing, in all sizes from infant to adult, are available at no charge. It will be open from 10 a.m. to noon. For more information call (406)433-3110, (406)433-3151 or (406)951-1626.

Pipeline Reclamation Workshop Set In Sidney March 5th

Submitted by Beth Redlin

Rangeland reclamation is no easy task, and the need for more information on how to do it effectively is growing as the number of pipelines criss-crossing the open prairies of eastern Montana and western North Dakota increase with oil and gas development in the Bakken.

To meet that need, a one-day workshop that brings together reclamation researchers, energy company representatives and ranchers and land managers to discuss the best methods for managing pipeline reclamation is planned for Tuesday, March 5th in Sidney.

The all-day workshop runs from 8 am to 4:30 pm, held at the new Montana State University research

and Extension building complex located at 1499 N. Central Avenue in Sidney. Lunch is included.

Presentation topics include: Reclamation Planning, Soil Management and Erosion, Weed and Grazing Management, What and How to Plant and more. Area ranchers, land managers and industry representatives will discuss their experiences and best practices in reclamation.

In addition to scheduled presentations, workshop attendees will also have the opportunity to participate in informal discussions with presenters throughout the day.

The workshop is being sponsored by the USDA-ARS Northern Plains Agri-

cultural Research Laboratory, the Richland County Extension Office and the Northern Great Plains Section of the Society for Range Management.

There is a \$10 registration charge. Attendees will receive lunch and a later mailing of the best practices publication that will be developed from the workshop. Space is limited, so you are encouraged to register early.

For more information, or to register, contact: Beth Redlin at 406-433-9427 or beth.redlin@ars.usda.gov.

Sidney Soccer Registration
Deadline is Fri, Feb 22
 Form available at
<http://www.midrivers.com/~sidsoccer/>
 or Reynolds Market










Sidney Soccer Association

Phone and Internet Discounts Available to CenturyLink Customers

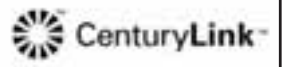
The Montana Public Service Commission designated CenturyLink as an Eligible Telecommunications Carrier within its service area for universal service purposes. CenturyLink's basic local service rates for residential voice lines are \$14.73 per month and business services are \$30.00 per month. Specific rates will be provided upon request.

CenturyLink participates in a government benefit program (Lifeline) to make residential telephone service more affordable to eligible low-income individuals and families. Eligible customers are those that meet eligibility standards as defined by the FCC and state commissions. Residents who live on federally recognized Tribal Lands may qualify for additional Tribal benefits if they participate in certain additional federal eligibility programs. The Lifeline discount is available for only one telephone per household, which can be either a wireline or wireless telephone. A household is defined for the purposes of the Lifeline program as any individual or group of individuals who live together at the same address and share income and expenses. Lifeline service is not transferable, and only eligible consumers may enroll in the program. Consumers who willfully make false statements in order to obtain Lifeline telephone service can be punished by fine or imprisonment and can be barred from the program.

Lifeline eligible subscribers may also qualify for reliable home high-speed Internet service up to 1.5Mbps for \$9.95* per month for the first 12 months of service. Further details are available at centurylink.com/internetbasics.

If you live in a CenturyLink service area, please call 1-800-244-1111 or visit centurylink.com/lifeline with questions or to request an application for the Lifeline program.

*CenturyLink Internet Basics Program - Residential customers only who qualify based on meeting income level or program participation eligibility requirements, and requires remaining eligible for the entire offer period. First bill will include charges for the first full month of service billed in advance, prorated charges for service from the date of installation to bill date, and one-time charges and fees described above. Qualifying customers may keep this program for a maximum of 60 months after service activation provided customer still qualifies during that time. Listed High-Speed Internet rate of \$9.95/mo. applies for first 12 months of service (after which the rate reverts to \$14.95/mo. for the next 48 months of service), and requires a 12-month term agreement. Customer must either lease a modem/router from CenturyLink for an additional monthly charge or independently purchase a modem/router, and a one-time High-Speed Internet activation fee applies. A one-time professional installation charge (if selected by customer) and a one-time shipping and handling fee applies to customer's modem/router. **General** - Services not available everywhere. CenturyLink may change or cancel services or substitute similar services at its sole discretion without notice. Offer, plans, and stated rates are subject to change and may vary by service area. Deposit may be required. Additional restrictions apply. **Terms and Conditions** - All products and services listed are governed by tariffs, terms of service, or terms and conditions posted at centurylink.com. **Taxes, Fees, and Surcharges** - Applicable taxes, fees, and surcharges include a carrier Universal Service charge, carrier cost recovery surcharges, state and local fees that vary by area and certain in-state surcharges. Cost recovery fees are not taxes or government-required charges for use. Taxes, fees, and surcharges apply based on standard monthly, not promotional, rates.



Millers' Corner
 Convenience Store, Deli & Catering

Fast Break "Fixins"

Grab 'n Go Made Fresh


Monday thru Friday
 Burgers, Pasties, Hot Pockets, Pizzas, Fried Chicken, Soup, Salads, Sandwiches, Fries, Steak Quesadillas, Double-stuffed burritos, & more!

406-433-4041
 2201 West Holly, Sidney

MEN'S RETREAT
Mend-A-Heart


DATE: Tuesday, February 26th
TIME: 5:30 PM to 9:00 PM
PLACE: Church of Christ Fellowship Hall
 905 4th St SW • Sidney

Sidney Health Center Hospice will host its annual Men's Mend-A-Heart Retreat on February 26th. The event is open to all men who have suffered a loss. The evening will start with a supper, followed by a presentation from guest speaker, Tom Diede and sharing. There is no cost to attend. Please call the Hospice office at (406) 488-2138 to pre-register.



SIDNEY HEALTH CENTER HOSPICE

216 14TH AVE SW • SIDNEY, MT • PHONE: (406) 488-2138
 VISIT US ONLINE AT: WWW.SIDNEYHEALTH.ORG



Good Luck at the Eastern C Divisionals Boys & Girls Basketball Tourney Wolf Point High School Wed. - Sat., Feb. 20-23



Sidney Sugars
INCORPORATED
Sidney Montana

Richland Pump & Supply

(406) 488-8706
David Williams
Cell (406) 489-8706
Scott Ramus
Cell (406) 489-8707
1511 S Central Ave • Sidney

www.richlandfcu.com



Richland
FEDERAL CREDIT UNION

Sidney & Roosevelt County
Office In Culbertson

Culbertson Pharmacy

Open Mon - Sat 9-5
115 Broadway
Culbertson, MT
406-787-5313
Keith Brisben
Pharmacist

IIS SERVICES, INC.

Dan Cayko
(406)-480-5665
Marty Shaide
(406)-489-1441
(406)-742-3630 • Fairview, MT

FINNICUM'S
Hardware • Furniture
Appliances • Giftware
Culbertson, MT • 406-787-5213

The Other Place
Family Clothing & Dry Goods
Culbertson, MT
406-787-5211



Merchants Bank

Open 9 a.m.-4 p.m.
Monday thru Friday



Box 465 • Fairview, MT
406-742-5203

INTERSTATE INDUSTRIAL
Steam Cleaning & Painting, Inc.

Marty Shaide
Fairview, MT
(701)-744-9051
(406)-489-1441

The Roosevelt Medical Center team supports our area sports teams.



Roosevelt Medical Center
Culbertson, MT
406-787-6400 Clinic
406-787-6401 Hospital
rmchealthcare.org

NEU CONSTRUCTION, INC.

Oil Field Roads & Locations
• Reclaim Work
• Gravel & Scoria Hauling

Fairview, MT
406-742-5549
neuconst@midrivers.com

HURLEY'S OILFIELD SERVICES

- Potable Water
- Sewer System • Loaders
- Communications
- Backhoe • Trucking
- Skid Houses • Porta Potties

406-742-5312
Fairview, MT

GOOD LUCK
FAIRVIEW WARRIORS!

Call 742-5261 for Your Appointment Today!

MONDAK
FAMILY CLINIC & PHARMACY
An Outreach Service of
SIDNEY HEALTH CENTER
Hours: 9am - 5pm • M, T, TH, F
304 S Ellery Ave • Fairview, MT



POWDER KEG

Family Dining
Open 4:30 pm Tue. -Fri.
2 p.m. Sat. & Sun.
Fairview • 406-742-5180

Bar JV Angus

Jim Vitt
406-798-3653
Dale Vitt
406-798-3398
Fairview, MT



Valley CROP CARE

904 East Main, Sidney, MT
406-482-1303
800-949-1303



Bar & Casino & Steakhouse
10 a.m. - 2 a.m. Daily
Happy Hour
5-7 p.m. Monday - Friday
401 Ellery Avenue • Fairview
406-742-8110



Water Hole #3

416 S. Ellery, Fairview
406-742-5224

Mon-Kota, Inc.
Fertilizer & Irrigation
Sales & Service

Fairview, MT
701-844-5300



Reinke
MORE RIGHT THAN RAIN
www.reinke.com

Wednesday, Feb. 20

Girls: Hinsdale vs Circle, 2:30 p.m.
Girls: Nashua vs Fairview, 4 p.m.
Girls: Culbertson vs Scobey, 5:30 p.m.
Girls: MonDak vs Saco/WW, 7 p.m.

Thursday, Feb. 21

Boys: Nashua vs Culbertson, noon
Boys: Hinsdale vs MonDak, 1:30 p.m.
Boys: Fairview vs Frazer, 3 p.m.
Boys: Circle vs Scobey, 4:30 p.m.



Front (L-R) Hannah Boyd, Mariah Machart, Rayneese Bets His Medicine, Renee Granada, Alexi Bidegaray, Ashton Handy. Back (L-R) Assistant Coach Erica Reid, Zandie Bighorn, Tori Kirkaldie, Kate Reid, Shelby Weeks, Erica Nickoloff, Emily Nielsen, Coach Ashley Sullivan.



Back (L-R) Erin Cozzens, Trisha Hurley, Caitlin Yadon, Alexis Gustafson. Middle (L-R) Bailey Schriver, Faith Vitt, Abby Lebsock. Front (L-R) Masyn Klose, Amie Taylor, Brittany Schneider.



Front (L-R) Assistant Coach Lance Marquardt, Justin Larsen, Michael Azure, Ben Bighorn, Shayne Cochran, Coach Cody Stepler. Middle L to R: Manager Donald Weinberger, Lane Sherman, Coltan Zahn, Adam Buxbaum, Ty Handy, Manager Landon Bidegaray. Back (L-R) Fabian Munoz, Christopher Azure, Nathan Hackley, Tristan Sun Rhodes, Manager McKade Mahlen.



Back (L-R) Alex Schriver, Tanner Reynolds, Jared Gustafson, Cody Shelmerdine, Logan Kjos, Brock Schriver, Jace Taylor, Cody Vitt, Jonathan Shaide, Kyle Lawhead, Rex Reynolds, Lak Kloker. Middle (L-R) Laden Livings, Monte Cayko, Sean Murphy, Ben Hardy, Justin Bieber, Alex Taylor, Jonathon Lebsock. Front (L-R) Cole Berry, Carson Cayko, Mitchell Shaide, Reagan Finsaas, Paul Hardy, Michael Calvert.

CULBERTSON

FAIRVIEW

CULBERTSON

FAIRVIEW

AAU Wrestling Results For Choteau and Butte

The Sidney Wrestling Club took 23 wrestlers to Choteau and Butte this weekend for wrestling action. Three wrestlers from outside our club also traveled with the team. Wrestlers on the team were: Everett Jensen, Christian Dean, Matt DeWitt (Wolf Point), Jaret Aisenbrey, Josh Aisenbrey, Jett Jones, Jace Winter, Jeremiah Paine (Wolf Point), Trevor Dean, Avery Gurney, Tristan Kohntopp, Casey Christian, Jace Johnson, Trace Jones, Waylon VanBuren, Riley Chatterton, Kelton LeFors, Ryan Wyman, Keegan Kary (Baker), Parker Dean, Tyler

Hayden, Keelen Geiser and Richard Ramos.

On Saturday the 5th-8th grade wrestlers participated in the annual Choteau Duals. The team won the first dual against Conrad 81-36; the second dual they beat Helena Bearcats 79-21; and the third dual they defeated Fairfield 85-33. In the semi-finals, the team lost to Billings/Castle Rock 36-62, and proceeded to take 3rd place by beating Great Falls East 57-44.

On Sunday the wrestlers participated individually in the Butte Cyclops Tournament. Those placing in the

tournament are as follows:

1st Keegan Kary, Cadet 120, 2nd Trevor Dean, Novice 112, 2nd Richard Ramos, Schoolboy 175, 2nd Trace Jones, Cadet 113, 2nd Tyler Hayden, Cadet 138, 4th Christian Dean, Novice 70, 4th Keelen Geiser, Novice

140, 4th Casey Christian, Schoolboy 112, 4th Tristan Kohntopp, Cadet 113, 5th Parker Dean, Cadet 132, 6th Riley Chatterton, Schoolboy 120, 7th Jeremiah Paine, Schoolboy 98, 8th Jace Winter, Schoolboy 91, 8th Waylon VanBuren, Schoolboy 112

Shepard Tournament Results

The Sidney Wrestling Club traveled to Shepard Saturday. They had 24 wrestlers compete. There were 760 wrestling from Montana and Wyoming.

Tots
#30 Eli Lonski 6th, #45 Jaiden Gustafson 1st
Bantam
#40 Reece Graves 1st, #45 Tanner Becker 5th, #65

Zander Dean 1st, #70 Chace Waters 2nd

Midget
#58 Ben Carlsen 6th, #60 Shane Waltner 4th, #63 Aden Graves 1st, #65 Ashton Berger 5th, #100 Cole Humphries 5th

Novice
#60 Kade Graves 1st, Kolby Hutzenbiler 3rd, #65 Devon Becker 5th, #75 Matt Hanson 6th, #90 Riley Waters 3rd, #100 Brodey Skogen 2nd, #128 Trey Schepens 4th

Elite
#165 Garrett Darby 2nd.

Sidney Commodities

Senior Commodity Program Distribution will be on Tuesday, February 26th, the back door of the Nutter Building 123 W. Main Sidney, MT, 9 to noon.

Right: Waylon VanBuren at the Butte Cyclops. (Photos by Kari Jones)



Christian Dean at Choteau Duals



Josh Aisenbrey at Choteau Duals



Sidney Basketball

The Sidney Eagles were in Hardin this past Saturday. Lexi Prevost, #24 goes up for a shot in Hardin on Saturday. The Lady Eagles defeated Hardin 56-53.



Paul Brannan, #10 shoots a basket in Hardin on Saturday. The Sidney Eagles were defeated by Hardin 73-48. The Eagles are headed to divisionals this Thursday at the Billings Metra. The Eagles will play Miles City at 2 p.m. The Lady Eagles will play Glendive at 4 p.m. (Photos by Kathy Johnson)

73rd Annual Meeting Saturday, March 16

at the
Office/Shop Complex in Lambert

Dinner will begin at 5:30 pm

Annual meeting to commence at 6:30

The board positions of Phil Fink and Jeff Johnson are up. Anyone is eligible to run regardless of what district you reside in. Phil has decided not to run for reelection. Russ Larson and Craig Johnson are on the nominating committee so please contact them if you are interested in these positions.

2012 was a very profitable year for your co-op.

Nortana continues to invest heavily in our staff, our most important asset. Over one million five hundred thousand was again spent on rolling stock and facility upgrades.

Nortana Grain is positioned to meet the everyday needs and challenges of your farm and ranch.

Your co-op is here to serve you tomorrow and your children and grandchildren for many years to come.

Over \$200,000 in patronage dividends and \$150,000 of stock retirement will be handed out at the meeting along with many door prizes and lots of good food.

Come Celebrate Another awesome year in the nicest office/shop complex in eastern Montana.

Nortana Grain has some amazing plans to better serve you in 2013 and beyond, come hear about them on Saturday night, March 16th



**NORTANA
GRAIN CO**

LAMBERT ~ SIDNEY

Lambert • 406-774-3331 ~ Sidney • 406-433-3014

A Little Bit Country

Wheat Show Left Life Changing Messages

Submitted by Warren Froelich

The 60th National Hard Spring Wheat Show is now history. I may sound a bit prejudiced by saying the line-up of speakers was outstanding starting with Jolene Brown, who is a Certified Speaking Professional (CSP) and ending with Rick Bieber, a self-spoken farmer who has taken his farm rags to riches.

Jolene is an exciting public speaker with a vast amount of experience working with farm families who desire to pass the farm's legacy from one generation to another. One of her many statements which still sticks with me related to how well we know the science and economics of agriculture but have very few skills of working with people, the most important resource on any farm or ranch. During her 2 ½ hour initial presentation she emphasized that the farm must be treated as a business if it is to have a legacy. This starts with the farm having a leader who strives to find a replacement. She mentioned that the boss of the family farm business has two hats, one as a parent and one as a leader. The challenge is only one hat can be worn at a time. She cited an example when a father had to fire a son because of poor performance. She stated many father-son relationships are successful but

sometimes very tough decisions must be made if the farm is to succeed.

It is not my intent to give a complete report of Jolene's presentation. That would be impossible. However, if you were unable to attend the Wheat Show I urge you to seek out her book "Sometimes You Need More Than A 2x4!" This can be done at her website: www.jolenebrown.com.

I really don't know where to start my report on Rick Bieber's presentation. He was scheduled to speak for one hour. However, with the many questions thrown at him I am glad we scheduled him to be the last speaker. Those questions kept Rick at the podium for another 1.5 hours. Rick has a 5,000 acre farm near Trail City, South Dakota, only about 70 miles straight south of my original stomping grounds. He claims his area may receive an inch or two more of moisture

per year than this area but insists his practices of no-till farming and crop rotations using grass and broadleaf plants will work here.

Rick is very passionate about the health of his soil. He is an astute student of the relationships between soil micro-organisms, plant roots and the effect these have on improved soil organic matter levels. He acknowledges it is the higher organic matter levels that give his soils the ability to hold more moisture thus producing greater yields.

Rick was quite detailed in the performance of his yields and financial returns. His data also included figures on water use efficiency. In other words, he has been recording trends in yields per inch of water received.

If you were unable to attend the Wheat Show to hear Rick, you may reach him at: 2till@westriv.com.

Time to Repeal Oil and Gas Tax Holiday

Submitted by Steve Paulson
Northern Plains Resource Council

The message Wednesday at the Montana State Capitol in Helena was that it's time for oil and gas companies to pay their fair share of taxes instead of getting a free ride on most of their production.

At a press conference sponsored by the Northern Plains Resource Council, Senator Christine Kaufmann (D-Helena) outlined her Senate Bill 295, which would repeal the tax-free holiday Montana gives oil and gas companies on the first 12 to 18 months of production. A typical Bakken formation well yields 57% of its production in the first 18 months, but the current tax holiday means that most of the production from each well is never taxed in Montana.

"It's time to bring the oil companies home from their holiday," said Kaufmann to several dozen Northern Plains members and other supporters. "From 2008 to 2012, the tax holiday cost the state and counties \$152 million. Our impacted towns and cities have lost another \$73 million during this period."

Kaufmann's SB 295 would capture the revenue from oil and gas taxes into two funds. The first would immediately go to alleviate demands on local infrastructure from the Bakken oil boom such as roads, sewers, housing, the proliferation of man-camps, police and fire services, and schools. The rest would establish a permanent renewable resources trust fund to promote renewable resources such as solar, wind, and geothermal, and also would preserve wildlife habitat for hunting and fishing.

"It takes cities and towns in the affected region two years before they can collect money from oil and gas taxes," Kaufmann said. "And only one-tenth of 1 percent goes to the municipalities."

"Of course these corporations will fly their executives in their private planes to Helena to tell us why they just can't make it without the tax breaks, and that they might take their business elsewhere. But it's not about the taxes they pay –

oil companies will go where the oil is. Montana has a lower tax on oil and gas than both Wyoming and North Dakota. Are they just going to pick up and move to North Dakota? If they want Montana oil, they will come here whether there is a tax holiday or not."

Deborah Hanson, a longtime Miles City resident and member of Northern Plains, told the press conference about conditions in eastern Montana communities. "Local governments need the money and they needed it four years ago," Hanson said. "In some towns, friends no longer socialize after work because of the influx of new people and traffic. Women are afraid to go out alone. Their home towns no longer seem like home. Our communities need tax fairness to deal with this exploding growth. Just as we Montanans pay our fair share in taxes, it's time oil and gas companies do, too."

The Rev. Cathy Barker, a United Church of Christ pastor in Helena said it is important that money for Bakken communities does not rob social programs funded by the state general fund.

"We need to fund infrastructure and social programs, but through a system that is fair and just for all Montana taxpayers," Barker said.

New Wolf Laws Take Effect Immediately

A wolf management bill that won swift and overwhelming bipartisan support in the Montana Legislature was signed into law today by the state's new governor. Gov. Steve Bullock said the new law, sponsored by Rep. Kelly Flynn, will allow hunters to purchase up to three wolf licenses and lowers the price of a nonresident wolf license from \$350 to \$50. The measure will also fortify state wildlife officials' science-based efforts to manage Montana's recovered and growing wolf population, the Governor said.

"This legislation leaves management of the gray wolf where it belongs, in the hands of scientists, not politicians," Gov. Bullock said.

The legislation was amended by law makers to allow hunting and trapping of wolves near national parks and allows wildlife officials to close such areas after established wolf harvest quotas are met.

In signing the legislation, Gov. Bullock asked FWP to ramp up education programs aimed at averting the harvest of collared wolves near national parks. Gov. Bullock also directed his staff to determine the best way to reengage the wolf advisory council. The council was originally formed to lead the state's productive wolf conservation and management plan discussions more than 12 years ago.

The new law also allows for wolf hunters to use their license after 24 hours of purchase, instead of a five-day wait; authorizes the use of electronic calls; and removes the requirement for wolf hunters to wear hunter-orange clothing after the general deer and elk hunting seasons have ended.

The recovery of the wolf in the northern Rockies an area generally compromised of wolf populations in Montana, Idaho and Wyoming, remains one of the fastest endangered species comebacks on record. The recovery goal for wolves in the three states was set at a minimum of 30 breeding pairs successfully reproducing wolf packs and a minimum of 300 individual wolves for at least three consecutive years. In the mid 1990s, to hasten the overall pace of wolf recovery, the U.S. Fish and Wildlife Service released wolves into Yellowstone National Park and central Idaho. By 2002 the recovery goal was reached and the wolf population has increased every year since.

Today, at least 1,774 wolves in 287 packs and about 109 breeding pairs, live in the region. The minimum Montana wolf population estimates at the end of 2011 include 653 wolves, in 130 verified packs, and 39 breeding pairs. New official population estimates are expected in March. Montana's wolf hunting and trapping seasons are open through Feb. 28. So far, hunters have taken 115 wolves and trappers have reported taking 84 wolves. For more information, visit FWP online at fwp.mt.gov. Click "Montana Wolf Hunt".

Natural Resource Impacts from Oil & Gas Industry Input Meetings

The McKenzie County Soil Conservation District (MCSCD) will be hosting Local Input Meetings for the public in the following locations:

Cartwright Community Center
February 27, 2013 • 10:00 - 12:00 p.m.

Squaw Gap Hall
February 27, 2013 • 1:30 - 3:30 p.m.

Grassy Butte Hall
February 28, 2013 • 1:30 - 3:30 p.m.

Keene Dome
March 7, 2013 • 1:00 - 3:00 p.m.

Power Fuels Apartments Clubroom, Watford City
March 6, 2013 • 1:00 - 3:00 p.m.
All times listed are in Central Standard Time

These meetings will allow the following:

- MCSCD & NRCS to share known Oil and Gas related natural resource issues.
- Input to be gained on other natural resource concerns the public may have.
- Determine actions the MCSCD & NRCS can take to assist the public in addressing and avoiding these impacts in the future.

Please plan to attend one of these meetings.
If you have any questions, please contact the MCSCD & NRCS at 1-701-842-3528 Ext. 3

Huge Clearance Sale

On All Used

5th Wheels Motor Homes & Travel Trailers

**3rd Annual Coates RV
Camping Show
March 22, 23, 24**

**All Marked
Down For
Immediate
Sale!**

COATES RV
SINCE 1938
WILLISTON

Family Owned Since 1938
321 Gate Ave. • Williston, ND • 701.572.2250
coatesrvnorthdakota.com

Boys and Girls Club Annual Dinner & Auction March 16

Submitted by Sarah Sifers

The Boys and Girls Club of Richland County Annual Dinner & Auction has been set for 5:00 pm on Saturday, March 16th at The Richland County Fair Event Center. Last year the club raised over \$40,000 thanks to the generosity of this community. Some of the items that have already been secured for this year's auction include Autographed Photos of: Adrian Peterson - the Minnesota Vikings, 2012 NFL MVP, Cam Newton - Carolina Panthers, Drew Brees - New Orleans Saints, Matt Ryan - Atlanta Falcons, Percy Harvin - Minnesota Vikings, Joe Thiesmann - Notre Dame Fighting Irish, Jerome Bettis -Pittsburgh Steelers, Arnold Palmer and Phil Mickelson. Also an autographed Football from Kevin Williams - Minnesota Vikings, and Laser Autographed Football from the 2008 Dallas Cowboys. In addition we will feature NFL team hats autographed by Michele Tafoya!

Additionally we will have a variety of beauty products from everyone at Mark Anthony & Co., an iPad 2 from Electric Land, a Rock Star bike from Blue Rock, a large stuffed pony from Wells Fargo, a Women's Makeover including a \$300 Gift Certificate to the Lucky Buckle and a Facial by Glow (Nikki Carda) and 2 tickets to 10 nights of the NFR December 5-14 from the Richland County Fair Board. More information will follow as other items are donated to the event.

This year's theme is "St. Patrick's Day" and guests arriving in costume or wearing green will be entered into a special raffle. The dinner will be catered by The Ranger Lounge, Casino, & Eatery and will be buffet style, featuring Mike's famous chicken fried steak and roast beef. Special appetizers will also be available starting at 5:00 pm. Tickets for the event are \$25.00 each. If you have any collectibles, game tickets, or general merchandise that you would like to donate please contact Sarah Sifers at 433-6763. We will also

be approaching businesses and individuals throughout the community in the next few weeks to ask for donations and to sell tickets to the event. We truly appreciate all of the support that the community has provided to help the Boys and Girls Club provide a positive place for our local young people to go and to help fulfill the mission of the club "To inspire and enable all young people to realize their full potential as productive, responsible, and caring citizens."



Game Wardens Association to Give Scholarship

The North Dakota Game Wardens Association has a \$300 scholarship available for a graduating high school senior entering college in fall 2013 who enrolls in fisheries or wildlife management with an emphasis on law enforcement.

Applicants must be North Dakota residents and have maintained a 3.25 grade point average. The scholarship will be awarded to the student upon proof of enrollment in college.

Applications are available by contacting the North Dakota Game and Fish Department at 328-6604; or email ndgf@nd.gov. Applications must be postmarked no later than May 10, 2013.

Honda Pilots Starting At:



\$31,842



- 4 Wheel Drive
- 21 Miles Per Gallon
- Back-up Camera
- 87 Cubic Feet of Cargo Space
- 16 Different Seating Arrangements





Ryan

MOTORS

1212 W. 2nd St, Williston

WWW.DRIVERYAN.COM

Some features may not be included in all models

Energy Roundup



Spud Date Set

By Jaimee Green

With plans for drilling set for May, the city of Sidney will soon have a horizontal well drilling underneath its soil, and residents holding mineral rights leases are anxiously wondering if the well will tap into a reservoir of black gold.

The project has been making headway for several years as lease agreements were gathered by Bakken Oil, of Sidney, and others. But, it wasn't until the Montana Board of Oil and Gas Conservation signed the well application docket number 257-2012 on Dec. 13, 2012 that the project became a rapidly moving reality.

The permit allows for four sections, two located in city limits and two other sections north of Sidney. Originally, only two sections were requested and changes to the well

application had to be made to ensure the wells were far enough away from city limits. The pad for the well will be built to potentially accommodate multiple laterals on the site and will be located one mile north of town on the Arnold Dige property. Whether or not more than one lateral is set up will be determined by whether or not the first lateral is successful.

XTO Energy of Sidney is in charge of both installing the well and operating the site once the well is operational.

"The chances XTO are taking stem from the well site running a bit to the north of the trough of the Bakken. It's a big gamble on their part and they have invested extra multiple thousands of dollars into this project because of the vast amount of leases involved. I want to thank them for that," Sidney Mayor Bret Smelser said.

While the ink on the permit to drill is newly dry, the idea of tapping into the potential for oil underneath the city limits began in the early 1980s with the owners of Elliot Oil.

Although Bakken Oil refused to comment, it would seem the task they had of contacting residents and securing mineral lease agreements must have been very time consuming. Smelser said obtaining leases for such a large endeavor, and with some 2,500 leases obtained in this process, Bakken Oil had a daunting job to complete, yet secured the needed amount of signatures necessary to enable the project to proceed.

Clint Hecker, a lease agreement holder for land located on the 59 East section received his letter from Bakken Oil some time ago. "They made the process simple to

understand and participate in," he commented.

The property sections where residents were offered leases agreements include Township 23 North, Range 59 East, MPM and all sections of 28, 29, 32 and 33. In total, this involves about 2,500 properties.

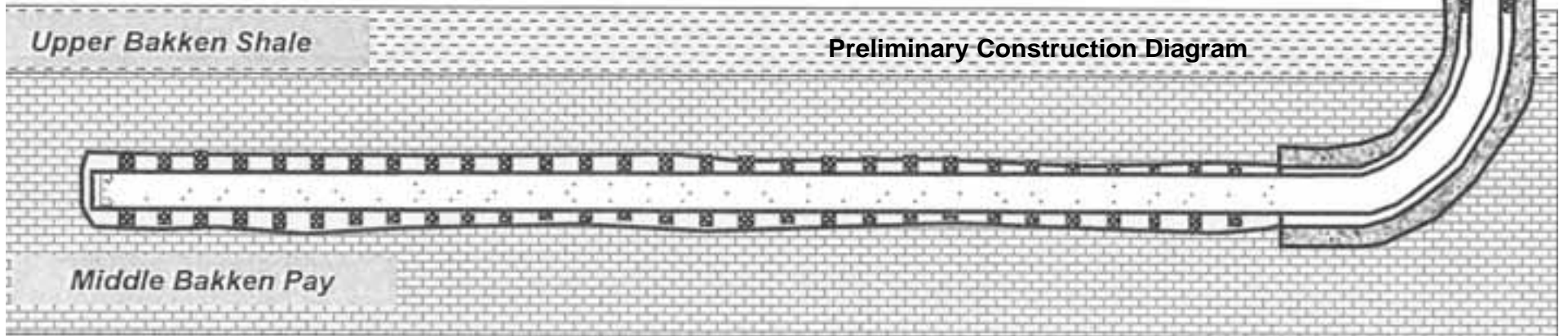
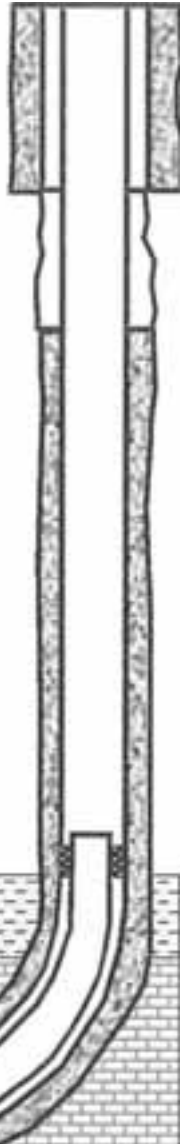
If the well goes commercial, generating revenues, residents holding mineral lease stand to receive \$50 to \$100 annually from their leases located in and around Sidney city limits. If the first well is a success, more wells will be set up resulting in more potential revenue for those property owners.

The city of Sidney looks to benefit from its 40 acres of parks that have been leased with the hopes of the well drilling commercial. "We were hoping to lease land underneath the streets and alleys too, but the residents of Sidney are receiving

30% extra acreage for their properties," said Smelser. With the parks acreage alone, the city would be on tap to receive between \$14,500 and \$17,000 a year if one well produces between 200 and 300 barrels a day at \$75 a barrel.

Smelser said if the well is successful he plans to donate his oil check back to the city to help pay for infrastructure and city employee wages to help offset the costs of trying to keep up with the demands of the oil boom. He is hoping others in the community will do the same and has plans for launching a voluntary campaign.

"Fortunately for the city of Sidney, XTO stepped up and are committed to this project. If this project is successful, it will provide a small revenue stream for Sidney for a long time to come," Smelser said.



Steel & More for the Oil Field

- Process Steel • Plate • Hot Roll Sheet
- Rebar • Pipe

PACIFIC
STEEL & RECYCLING

Open 8am - 5pm Mon - Fri
13904 W. Front St., Williston, ND • 701-572-1095

American Truck & Equipment Co., Inc.

• Custom built fabrications of all types
• Aluminum Welding
• Rig up of oil field trucks
• Truck & Trailer repair (mechanical & electrical)
• DOT Inspections

5050 139th Ave. NW Lot 113 • Williston, ND
(701) 572-2832 • Fax: (701) 572-2803

JMAC
SAND & GRAVEL | EARTHMOVING
UNDERGROUND UTILITIES | SITE DEVELOPMENT

For employment information visit:
www.jmacresources.com/Jobs

Mitchell's OIL FIELD SERVICE, INC.

"Mitchell's can build it, fix it, lift it, haul it"

Roustabout Crews - Winch Trucks - Cranes
Cherry Pickers - Wellsite Supervision
Contract Pumping - Treaterhouse Construction
Steamers - Pipeline Construction

Mitchell's is a great place to work!

www.mitchellsoilfield.com

Housing Community Now Open
Arnegard-Watford City

All private bedrooms with private bathrooms

Highway 85 at 134th Ave. NW
Safe & Clean • 800-769-3874

Fully Equipped Kitchens
instalodgend.com

We Are Your Oil-field Supply Headquarters!

Down Hole Sucker Rod Pumps
Tubing Anchors • Gates
Hydraulic Hoses & Belts
Ballon Ball Valves • Line Pipe • Tubing
Fittings • Norris Sucker Rods

Richland Pump & Supply

Stanley, ND
701-628-8706
Sidney, MT
406-488-8706 • rpands@midrivers.com

HURLEY'S OILFIELD SERVICES

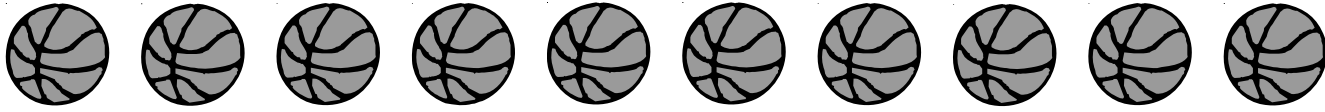
- Porta potties • Potable Water
- Sewer System • Loaders
- Communications • Backhoe
- Trucking • Skid Houses

406-742-5312 • Fairview, MT

GOOD LUCK SIDNEY EAGLES

Class A Divisionals • Billings

Thurs.-Sat., Feb. 21-23



Sidney vs. Glendive • Thursday • 4 p.m.

GURNEY ELECTRIC inc. Sidney, MT
406-482-3204

*Electrical Supplies & Equipment
*Decorative Lighting Electrical Service

We're Proud to Support the Sidney Eagles!



BLUE ROCK PRODUCTS CO.
501 9th Ave NE • Sidney, MT
406-433-3403

www.richlandfcu.com

Richland
FEDERAL CREDIT UNION

Sidney & Roosevelt County
Office In Culbertson



i'm lovin' it

Sidney, MT
406-433-1983



Frontier

Heating • Refrigeration
Air Conditioning
Sales/Service/Installation
Sidney, MT
406-488-4657

Eagle Country
Ford

Experience the Eagle Country Difference!

Mon-Fri. Hours: 8 - 5 p.m.
Sat. Hours: 9 - 1 p.m.

215 East. Main St. • Sidney
1(800)482-1810 • 433-1810

ACTION AUTO



406-433-2312
1-800-788-2312
220 E Main
Sidney, MT



Back Row (L-R) Jace Sullivan, Elise Torgerson, Ciara Sinks, Latasha Wieferrich, Daryn Wolff, Levi Weltkol, Crystal Gauthier. Middle Row (L-R) Lakayla Nentwig, Krista Steinbeisser, Morgan Thiel, Lexi Prevost. Front Row (L-R) Mattie Steinley, Lexi Haggerty, Hailey Steinbeisser, Kortney Mayer.

Sidney vs. Miles City • Thursday • 2 p.m.



Back Row (L-R) Luke Montgomery, Austin Papka, Jesse Abelseh, Colin Moran, Adam Lake, Caleb Benson, Colton Moran. Middle Row (L-R) Logan Theil, Cade Strasheim, Rylee Peterson, Kory Halvorson, Justin Brown, Paul Brannan. Front Row (L-R) Molly Brodhead, Tyler Quilling, Tristan Rohner, Brady Bell, Cody Steinbeisser, Chelsea Strasheim.

Gem City
MOTORS



703 S. Central • Sidney
406-433-3120

www.gemcitymotors.com



Reese & Ray's IGA

203 2nd St. NW • Sidney
406-482-3737



(406) 488-8706

David Williams
Cell (406) 489-8706
Scott Ramus
Cell (406) 489-8707
1511 S Central Ave • Sidney

Shop Us for...

- Furniture
- Bedding
- Appliances

FINNICUM'S
in

Williston, Culbertson
and Sidney

SIDNEY TAX SERVICE, INC.

Computer Accounting
Tax Returns • Payroll
DOUG LANG
BILL ZIMMERMAN
CRAIG PRICE

115 2ND ST NE • SIDNEY, MT
406-433-3131

Footers
salads Subs & such

616 S. Central
Sidney, MT
406-433-7827

Open 10 a.m.
Daily

East-Mont Enterprises Inc.

- Candy
- Paper Goods
- Cleaning Supplies & More!

608 E. Main • Sidney
Wholesale Distributors
406-433-2910

W Mitchell's
OIL FIELD SERVICE, INC.

ONE NATION UNDER GOD

Mitchell's is a great place to work!

www.mitchellsoilfield.com

Olson Plumbing & Heating

PO Box 375 • Sidney, MT
482-4027



Sidney Sugars
INCORPORATED
Sidney Montana

Hoffman Sewing Challenge Coming to Eastern Montana

Submitted by Lucy Lovec, Chairperson

Local quilting and sewing enthusiasts will have the opportunity to view the workmanship of fellow artists from across the country on March 9. The premiere Hoffman Challenge Collection is coming to Sidney. Included in the trunk show is a collection of 40 quilts and 30 garments and accessories made by sewing artists from across the country.

The show will be in Sidney one day only on Saturday March 9, 10am to 4pm MST at the MSU Extension- EARC Building. Admission is \$5. The show is sponsored by the Sidney/Eastern Montana Chapter of the American Sewing Guild.

The Hoffman Challenge begins with the sponsoring company, Hoffman California Fabrics, choosing a fabric as the focus for the competition. The challenge intends to inspire textile artists world-wide to create an original item using a recognizable portion of the challenge fabric. The submission of an entry for the Hoffman Challenge commits that entry to travel in one of several trunk collections for a full year. Now in its 26th year, entries come from all 50 states and 7 different countries.

Sewing enthusiasts in Eastern Montana will want to take this opportunity to view the Hoffman collection of quilts, clothing and accessories. The visual impact and workmanship of each piece will be inspirational.



1st Place Mixed Technique "Spilling Over"



Jason Mitchell

Jason Mitchell Outdoors Fort Peck

Jason Mitchell of the outdoor program, Jason Mitchell Outdoors recently filmed an ice fishing segment on Fort Peck Reservoir. Mitchell along with three additional outdoor writers targeted trophy pike near Rock Creek in the Dry Arm.

"We caught several big pike, the size and girth of these fish is impressive and Fort Peck might be one of the Nation's best kept secrets for huge pike," explains Mitchell. The anglers used tip ups and Northland Tackle Predator Rigs baited with either frozen herring or big suckers to catch most of the bigger pike. Points and shelves that cut near sharp breaking channels produced many of the biggest pike with most of the pike caught in less than fifteen feet of water.

"The high water Fort Peck had a few years back has definitely benefitted the lake with some solid year classes of fish. That is typical of these Missouri River Reservoirs when high water covers some of the vegetation on the shoreline, you get year classes of pike that eventually grow up to be really big pike," explains Mitchell. Besides several trophy pike, the anglers caught a mixed bag of lake trout, ling and walleye.

Jason Mitchell Outdoors reaches over twelve million households on Fox Sports North and Fox Sports Midwest airing in the following states; ND, SD, NE, KA, MN, WI, IA, IL, MO and IN. The trophy pike segment filmed last week on Fort Peck will air this upcoming fall and winter. Show schedule and listings can be found at www.jasonmitchelloutdoors.com.



J&S FEEDS

1000 N. MERRILL • GLENDIVE



COME IN FOR ALL YOUR CALVING NEEDS. CALL AHEAD, WE'LL GET IT READY!

Mineral Specials • Purina • Vaccines
 Check Store for Details • Crystalyx • Vigortone
 • Linn Panels • Horse Tack
 • QLF (Quality Liquid Feed)
 • Animal Health
 • Western Accessories
 • Montana Silversmith

Mon. - Fri. 8:00-5:00
 Sat. 8:00-12:00
(406) 377-2180

"Animals Make Better People, Purina Makes Better Animals"

B I N G O

Billiards & Darts

203-05 Main Street, Lower Level, Williston
 Same Entrance As Veteran's Affairs & J's Fashion Threads
 572-6254 or 1-800-732-0962
 Open: Tuesday - Saturday 1:30 pm - 5:30 pm
 Call for after or before hours appointments

20% off Bingo Daubers
 Pool Cues & Accessories
 Dart Sets & Accessories
 Games • Playing Cards
 Poker Chips

Selling Used:
 Pool Tables • Juke Boxes
 Dart Boards
 Locally Owned & Operated by the Joseph Family



IT'S HERE...
 35th Annual
 Richland County
4-H Citrus Sale

Now Taking Orders For


- ✿ Rio Star Red Grapefruit
- ✿ California Navel Oranges
- ✿ Washington Red Delicious Apples
- ✿ Braeburn Apples ✿ D'Anjou Pears

PRICES:
 \$20 - 16 lb. Box of pears
 \$20 - 18 lb. Box of apples, oranges, pears
 \$20 - 18 lb. Box of grapefruit, oranges, Braeburn apples
 \$20 - 18 lb. Box of apples, oranges, grapefruit, pears
 \$26 - 30 lb. Box of grapefruit/oranges mix
 \$26 - 30 lb. Box of grapefruit, oranges, Braeburn apples
 \$26 - 30 lb. Box of apples, oranges, grapefruit, pears
 \$26 - 30 lb. Box of apples, oranges, pears
 \$15 - 20 lb. Box of grapefruit
 \$18 - 20 lb. Box of oranges
 \$21 - 40 lb. Box of grapefruit
 \$26 - 40 lb. Box of oranges
 \$15 - 9 lb. Box of 10 oranges, 6 apples*, 4 pears
 \$15 - 9 lb. Box of Braeburn Apples * half Red Delicious
 \$18 - Boxed Beef Sticks (40-50 Ct.) half Braeburn
 \$11 - Box of Cheese Sticks (24)
 \$12 - Smokey Snack Sticks (10-12 Ct.)

Support your local 4-H program by placing an order with a local 4-H member or call 433-1206.




Delivery March 28th
 All Fruits Guaranteed!




Sitz Upward 307R
 BW WW YW SC Milk Marb REA Fat
 +2.4 +70 +134 +1.45 +41 +.35 +.76 +.006

23rd Annual Production Sale
SATURDAY, MARCH 2, 2013
 1:00 P.M. MST • STOCKMEN'S WEST
 DICKINSON, ND

Selling 50 Yearling Angus bulls



A.I. SIRES
 KESSLERS FRONTMAN R001
 SITZ UPWARD 307R
 K C F BENNETT TOTAL
 CONNEALY RIGHT ANSWER
 CONNEALY FINAL PRODUCT
 CONNEALY IMPRESSION



Kesslers Frontman R001
 BW WW YW SC Milk Marb REA Fat
 -2 -51 +68 +.49 +.33 +.30 +.69 +.004

Tuhy

ANGUS RANCH

RICHARD & SANDRA TUHY
 10449 15TH ST. SW • MANNING, ND 58842
 (701) 573-4391 • (701) 290-0748
www.luckyvalley.com

Bulls fed free until April 1, 2013. • Raised without creep feed.
 Average 205 weight of 715 lbs. • Many bulls are suitable for heifers.
 First-year breeding season guarantee.

MSU Ext. Offers Online Courses In Weed Identification & Pesticide Application

Submitted by MSU News Service

Montana State University Extension and the Schutter Diagnostic Lab are offering new online courses covering plant anatomy and the diagnostic features of 32 state-listed noxious weeds.

The free courses are offered to assist early detection of noxious weeds in Montana and provide pesticide applicator credits.

The three-course series has been designed to assist with early detection and rapid response (EDRR) across Montana. The goal of EDRR is to recognize high priority plants and take action to manage them while populations are still small.

Often small plant populations can be eradicated or controlled with much less expense compared to large, well-established populations. A key aspect of EDRR is a well-educated citizenry that can recognize and accurately identify high priority weeds in the field.

The first course covers plant anatomy terms critical to plant identification.

The second course identifies diagnostic features of the highest priority noxious weeds for statewide EDRR. Weeds like flowering rush, rush skeletonweed, and Japanese knotweed are included. Many people have potentially never seen these weeds before since they are not widely established in Montana.

The third course covers diagnostic features of noxious weeds common in many areas of the state, including weeds like spotted knapweed, common tansy, and sulfur cinquefoil. Each course ends with a challenging quiz of the material presented.

The free online courses, which can take one to two hours per course to complete, are available to anyone interested in learning more about noxious weed identification. Private, commercial and governmental pesticide applicators can receive re-certification credits for completing the courses.

To access the courses, go to <http://msuextension.org/learn/invasiveplants>.

If you are interested in learning more about the courses or have questions, please contact Hilary Parkinson, plant diagnostician for the MSU Schutter Diagnostic Lab, (406) 994-1871 or hilary.parkinson@montana.edu; or Jane Mangold, MSU Extension Invasive Plant Specialist, (406) 994-5513 or jane.mangold@montana.edu.

Sidney High School 2nd Quarter Honor Roll

Freshman:

Tenna Cooley, Kelsie Hall, Aubrey Kessel, Skylar Petrik, Shelby Reidle, Sarah Turek, Brianna Reid, Camden Berka, Tel Hermanson, Robert Horton, Chelsey Metcalf, Devon Watkins, LaTasha Wierich, Katlyn Winter, Marlee Zentner, Megan Deming, Micala Morehouse, Taryn Potts, Shanane Zueger, Luke Beenken, Clay Carpenter, Tayler Fischer, Tess Ler, Marcus Lovegren, Cayla Norby, Cade Strasheim, Austin Watterson, Matthew Dey, Matthew Folstad, Harmonie Hampton, Dylan Johnson, Kyle Mueller, Mattie Steinley, Nang Widiyasa, Lindsey Minow, Trent Schilling, Kade Swisse, Kaitlyn Tibbits, Danielle Steinley, Daniel Johnson, Nicholas Larson, Sierra Crowe, Desirae Fasching, Michael Stevens, Tyler Wray, Bridger Coffman, Matthew Dynneson, Tristin Fahrnow, Alexis Haggerty, Ryan Lander, Christopher Wick.

Sophomores:

Brady Bell, Kory Halvorson, Kortney Mayer, Holly Papineau, Logan Thiel, Taylor Thiessen, Christian Anglesey, Hailey Steinbeisser, Tucker Heller, Adam Lake, Mark LaPan, Amanda DeMary, Sean Smith, Natasha Uran, Austin Lange, Tessa Dahl, Ethan Graves, Madison Jurgens, Jose Reyna, Hallee Taylor, Lakayla Nentwig, Tate Getchell, Cody Christian, Morgan Kohntopp, Nathaniel Langwald, Malorie Cvancara, Audria Tудie Crosby, Gresh Jones, Tyler Messer, Taylor Searer, Augusta Wick.

Juniors:

Juan Aguilar, Eliska Cvrkalova, Ariana Gaskin, Rieta Iversen, Nicole Moore, Reanna Peterson, Rylee Peterson, Alexis Prevost, Jeremiah Rhines, Emily Schaff, Taylor Utgaard, Victoria Hill, Ethan Chamberlain, Sheridan Sundheim, Tresha Sanders, Megan Johnson, Colton Hecker, Luke Montgomery, Colin Moran, Dace Fisher, Connor Frank, Leah Larson, Paul Brannan, Tyler Mathern, Jared Troutt, Lexie Brunsvold, Robert Frank, Dominique Radke, Torea Tofte, Kalah Frazier, Jocelyn Kittson, Jozi Moore, Bryan Messer, Ryan Steinbeisser, Cash Nesper, Sam Reid, Michael Waddell, Tristan Potts, Cheyenne Chamberlain, John Elmore, Jessi Harmon, Braydn Rooks, Jordan Stevens.

Seniors:

Amy Bieber, Olivia Hintz, Michaela Lofthus, Heather McDonald, Mikayla Minow, Ashley Bjork, Abbe Byer, Alec Johnson, Krista Steinbeisser, Duran Vigasaa, Chelsea Strasheim, Amy Schaffer, Mario Winsky, Timothy Francis, Jesse Staffanson, Jalyssa Gorder, Colton Moran, Margret Carda, Jason Papineau, Morgan Thiel, Molly Wilkinson, Abigail Haraldson, Amanda Heinle, Kiara Shaver, Courtney Anderson, Jade Brunsvold, Dailyn Finnicum, Matthew Johnson, Ryder Peterson, Marcos Aguilar, Abby Balcer, Taylor Tighe, Heidi Anderson, Molly Brodhead, Taimeca Byre,

Whitney Leuenberger, Matthew Lang, Kyle Smith, Tyler Stevens, Spencer Brost, Dain Earwood, Amanda Herbst, Maci Holst, Elise Torgerson, Jesse Ziler, Matthew LaPan, Austin Papka, Matthew Litten, Justin Brown.

Lambert School Honor Roll 2012-2013 2nd Quarter

Lambert School supports two honor roll awards. Students maintaining a 4.0 – 3.5 will earn an "A" honor roll status. Students with a 4.0 are indicated with an "*". "B" honor roll status is for students earning a 3.0 – 3.49.

"A" Honor Roll 3.5 – 4.0

Bailee Fink*, Cameron Johnson, Claire Kennedy, Tristan Mullin*, Jared Rosaaen*, Jessica Williams, Cameron Gomke*, Lars Kvaalen, Christian Prevost*, Piyawan Ruengarak, Chris Sommerfeld, Shelby Hier*, Jacob Rosaaen, Autumn Rehbein*, Alyssa Damm*, Quentyn Evenson, Hazen Fink*, Taylor Fink, Brock Frisbie*, John Helmuth*, Rachel Prevost*, Téa Thiessen*, Sean Williams, Emily Carda, Abby Herman, Kelvin Hill, Colin Kennedy, Trent Lien, Rain Rehbein*, Casey Watson, Molly Pust

"B" Honor Roll 3.0 – 3.49

Alexis Johnson, Ryan Boss, Erich Pust, Silja Springfield, Lane Verschoot, Brandon Whitney, Eathan Carda, Seth Torgerson, Tori Cundiff.

Lambert School 1st Semester Honor Roll 2012-13

Lambert School supports two honor roll awards. Students maintaining a 4.0 – 3.5 will earn an "A" honor roll status. Students with a 4.0 are indicated with an "*". "B" honor roll status is for students earning a 3.0 – 3.49.

A Honor Roll

Jessica Williams, Jared Rosaaen, Tristan Mullin, Claire Kennedy, Cameron Johnson, Bailee Fink, Chris Sommerfeld, Piyawan Ruengarak, Christian Prevost, Cameron Gomke*, Lars Kvaalen, Autumn Rehbein, Shelby Hier, Sean Williams, Téa Thiessen*, Rachel Prevost, John Helmuth*, Brock Frisbie*, Taylor Fink, Hazen Fink*, Quentyn Evenson, Alyssa Damm, Emily Carda, Abby Herman, Kelvin Hill, Colin Kennedy*, Rain Rehbein*, Casey Watson, Molly Pust.

B Honor Roll

Alexis Johnson, Brandon Whitney, Lane Verschoot, Silja Springfield, Ryan Boss, Kyle Watson, Jacob Rosaaen, Malakai Killick, Eathan Carda, Trent Lien, Tori Cundiff.



THE BUSINESS ROUNDUP
GOT A BUSINESS CARD? LET US HAND SOME OUT!
 CALL FOR ALL THE DETAILS! 406.433.3306 OR 800.749.3306

GO TO
WWW.ROUNDUPWEB/DIRECTORY
 FOR DIRECT LINKS TO
 COMPANY WEBSITES
 & LOCATIONS

AGRI INDUSTRIES
 Water Professionals
 Underground Contractors
Bill Borchert & Lane Boyce 1775 S. Central Ave.
 Licensed Water Well Drillers Sidney, MT 59270
 email: bill@agriindustries.com www: www.agriindustries.com
 1-877-488-8066
 Office: 406-488-8066
 Fax: 406-488-8067

S SERVICES, INC.
 Oil Field & Industrial Construction
 2265 S. Central Ave.
 Sidney, MT 59270
 Email: lee@slservices.net
 Phone: 406.433.6754
 Fax: 406.433.6755
www.slserviceinc.com

RV Depot
 RV Parts & Mobile RV Repair
 including in stock
 • water heaters • furnaces • air conditioners • special orders available
 Mon-Sat: Check for hours.
 701-842-2306 • 305 S. Main • Watford City, ND

SONDA'S solutions
 Specializing in FR Clothing
 OFFICE: 406-433-6757 • CELL: 406-697-7153
 2221 S. CENTRAL AVENUE • SIDNEY, MT 59270
 FAX: 406-433-6755 • WEBSITE:
WWW.SONDASSOLUTIONS.COM

Beagle PROPERTIES INC.
 View all our listings at
www.beagleproperties.com

MD HOSE & FITTING
 Hours: 7 a.m. - 5 p.m. Mon. - Fri.
 205 10th Ave. S. E. Sidney • Sidney Red-E-Mix West Building
 P: (406) 433-1590 • After Hours: (406) 478-3116
mdhose@midrivers.com

Customer Service is Our #1 Priority
BORDER STEEL AND RECYCLING, INC.
 Farm & Ranch Products & Construction Materials. New Steel, Aluminum & Stainless.
 Brady Smelser • Tim Mulholland • Kelly Moody • Bret Smelser • Ernie Gawryluk
 Sidney Glendive Williston Plentywood
 35002 CR 123 2703 W. Towne St. 13896 W. Front St. Hwy 16 East
 406-433-7737 1-800-423-5219 1-800-820-5493 406-765-2624
 1-855-810-2995

Antiques • Collectibles • Pawn
 Guns • Gently Used Items
THE TRADING POST
 111 East Main • Sidney • 406.433.7676
 Open: Mon-Fri • 9 am - 6 pm • Saturday • 10 am - 5 pm

DOORBUSTN
 Portables & Septic Service, LLC
 Blaine Rogers, Owner
 PO Box 1003 Office: (406) 433-7588
 Sidney, MT 59270 Fax: (406) 433-7598
 Service: (406) 488-0075
www.doorbustnportablessepticsevice.com


YOUR COMPANY HERE

Roundup WEB.COM

NICK JONES REAL ESTATE REALTOR
 TRUCK ROUTE SOUTH, SIDNEY
 OR CONTACT ONE OF OUR AGENTS:
 NICHOLAS J. JONES • DENNIS WICK • JUSTIN JONES • JERRIAN FRANKEN • KRISTIN LARSON
 BROKER 406-480-1330 406-480-9525 406-478-3773 406-480-5129
 406-480-1544 WWW.NICKJONESRE.COM 906-794-3115

National FFA Week February 16-23



 **Lower Yellowstone REA**
Highway 16 NW
Sidney, MT
488-1602

 **Northern States Fishing Tool Co., Inc.**
Service & Rental Tools
Box 346
Watford City, ND
701-842-3350



www.richlandfcu.com
Richland
FEDERAL CREDIT UNION
Sidney & Roosevelt County
Office In Culbertson

Western Bank of Wolf Point
111 3rd Ave. S
Wolf Point
653-5500
FDIC

 "We Put Value On The Line"
Sheridan Electric
Medicine Lake, MT
406-789-2231

Northland Feed & Seed, Inc.
Quality Feeds & Animal Health
Watford City, ND
842-3511

 **i'm lovin' it**
Sidney, MT
406-433-1983

 **Valley CROP CARE**
904 East Main, Sidney, MT
406-482-1303
Fax: 406-482-2251

SEE US FOR YOUR INSURANCE NEEDS
 **Stockman Insurance**

 **McKenzie Electric COOPERATIVE**
A "Exclusive Energy" Cooperative
908 4th Ave. NE
Watford City, ND
701-444-9288

 **Frontier Heating • Refrigeration Air Conditioning**
Sales/Service/Installation
Sidney, MT
406-488-4657


 **Richland Farm Mutual Insurance**
(406) 488-4898

 **Sidney Sugars**
INCORPORATED
Sidney Montana

Mon-Kota, Inc.
Fertilizer & Irrigation Sales & Service
 Fairview, MT
701-844-5300
 **Reinke**
MORE RIGHT THAN RAIN

All-West
Ranch Supply
1555 S. Central
(across from McDonalds)
Sidney, MT
433-3025

 **Olson Plumbing & Heating**
PO Box 375 • Sidney, MT
482-4027

 **Northwest FARM CREDIT SERVICES**
ADVANCING RURAL AMERICA'S SUCCESS
123 N. Central Ave.
Sidney, MT 59270
(406) 433-3920
1-800-769-1040
www.northwestfcs.com

TRI-COUNTY IMPLEMENT
2429 W. Holly St
Sidney, MT
406-488-4400 or
1-800-624-6540
CASE III

 **Nemont**
discover us
1-800-636-6680
www.nemont.net

 It's All About Saying Goodbye
Fulkerson Funeral Home
315 Second St. NW
Sidney, MT 59270
406-488-2805
email: ffh@fulkersons.com
www.fulkersons.com

 **Regal Eagle Casino & Lounge**
900 1/2 South Central • Sidney, MT
Behind The Lone Tree Inn • 433-3245

Enjoy **Coca-Cola CLASSIC**
Coca-Cola Bottling
Williston, ND
701-572-6746

CENEX Farmer's Union Oil Co.

101 South Main
Watford City, ND
701-444-3639

Food Check-Out Week Promotes Stretching Grocery Dollars

Submitted by Rebecca Colnar

Food Check-Out Week is a time to show consumers how to stretch their food dollars as well as celebrate the productivity of farmers and ranchers. Eating healthy while on a tight budget is within reach for most Americans, provided they're willing to invest some time in strategic shopping. During Farm Bureau's upcoming Food Check-Out Week, Feb. 17-23, farmer and rancher members will focus on spreading the word about how consumers can stretch their grocery dollars with healthy, nutritious food. They will use it as a time to reach out to consumers in person and through social media to answer questions about the food they grow or the livestock and poultry they raise.

Montana Farm Bureau Women's Leadership Committee (WLC) has two cel-

ebrations; one during Food Check-Out Week where the committee will educate shoppers at selected grocery stores and make food donations to the Ronald McDonald House (RMH). County Farm Bureau WLC members will collect donations for their local food banks or the RMH. The RMH serves as a home away from home for families of hospitalized children. Through these charitable donations to local Ronald McDonald Houses (and other charities), Farm Bureau recognizes the need that everyone has to find solutions to feeding families healthy foods on a tight budget. The third week of February was selected for Food Check-Out Week as a way to celebrate American food and as a bridge to National Nutrition Month in March.

The Montana Farm Bureau WLC will also serve cinnamon rolls and talk to legis-

lators about agriculture on March 27 in the Capitol Rotunda in Helena.

"Food Check-Out Week, along with our event at the Capitol, is a perfect way to speak with consumers and lawmakers," said Gretchen Schubert, chair, MFB WLC. "It gives an opportunity for farmers and ranchers to tell their stories and how they produce abundant, healthy food."

Schubert cites ideas for saving money while grocery shopping, such as having a shopping list; making healthy, inexpensive snacks instead of buying pricey ones; clipping coupons; not buying a product unless you are sure you'll eat it; and not shopping when you're hungry.

"Specialty, processed foods cost more, and often aren't as nutritious as making a meal from scratch," noted Schubert.

On the national level, the

American Farm Bureau (AFB) Women's Leadership Committee donated food and funds to Ronald McDonald House Charities of Phoenix, Feb. 11 as a kick-off to Farm Bureau's annual Food Check-Out Week. Lillian Ostendorf, the former MFB WLC chair who now serves on the AFB WLC Committee Board, participated in the national event in Phoenix. The AFB WLC set up an informational booth at the Wigwam Farmer's Market and handed out recipe cards,

spun a trivia wheel and had the opportunity to interact with consumers young and old.

"We had great rapport with a lot of people, and the kids were very enthusiastic and asked a lot of questions. We had one little boy ask us if we really had animals on our farm. Of course, we told him about our cattle, horses and sometimes even sheep," said Ostendorf.

Following a morning at the farmers' market, the WLC held a fundraiser luncheon

which enabled the committee to write an \$8,100 check to the Ronald McDonald House. In addition, they purchased \$400 in groceries and delivered them to the Phoenix RMH.

"This was one of our most successful national Food Check-Out Week events," noted Ostendorf. "We raised an amazing amount of money, presented great fresh food to the Ronald McDonald House, and interacted with many different consumers."

Target Logistics Announces Watford City Lodge Grand Opening

Bakken facility provides home-style accommodations for 334 workers

Submitted by Randy Pruet

Target Logistics, the largest turnkey workforce housing provider in the United States, will hold the Grand Opening and Ribbon Cutting of its Watford City Lodge on Thursday, February 21 at 5:30 PM. The lodge is designed to accommodate the ever-growing workforce in the Bakken and now provides much-needed housing for 334 oil, gas and pipeline workers – with an additional 300 bedrooms planned for this summer.

"Keeping workers comfortable, well fed and safe comprise what we describe as 'The Economics of Comfort™'," says Target Logistics Founder and CEO Brian Lash. "We have proven that this directly results in increased productivity, lower attrition and fewer onsite accidents – all leading to a better return on investment for our clients."

Located at 2509 14th Street NW in Watford City (approximately two miles North on County Road 35 off of U.S. Highway 85N), the Watford City Lodge employs approximately 30 people and features:

334 bedrooms with private or Jack and Jill bath-

rooms

Target Logistics Hibernator Sleep System™ with pillow-top mattresses

36" flat-screen televisions with cable access and DVD players, free Wi-Fi throughout

Desk, chair, and wardrobe in every room

Individually climate controlled rooms

Kitchen and dining area open 24-hours serving three hot meals daily

Game and recreation room with televisions, gaming tables and Internet Café

Gym with state-of-the-art equipment, sauna

Housekeeping services

Complimentary self-service laundry with free deter-

gent

Target Market™ convenience store

Secure well-lit parking, 24-hour security, controlled entry access cards

"Target Logistics is new to Watford City and McKenzie County and we intend to be a valued addition to the area," says Lash. "We embrace an enthusiastic sense of corporate citizenship toward the communities and environments in which Target Logistics operates."

With the addition of the Watford City Lodge, Target Logistics operates 16 properties in North America with more than 5,600 total beds. Additional properties will begin construction in 2013.

Sign Up for Dry Redwater

Submitted by Gayle Nelson, Thiel Water District

We are a small rural water district located east of the Yellowstone River SE of Sidney off of MT 23. We are outside of the current boundary for the Dry-Redwater Regional Water Authority. We must treat our water for floride and the system is aging. Repairs and improvements are very costly. Dry Redwater can ask for an extension of service area. If you live in the vicinity of Highway 23 east of the Yellowstone River across the MDU bridge and would be interested in connecting to the Dry Redwater, please contact Mandie Nay, DRWA Coordinator 406-485-3792 or drwa@midrivers.com Please send an enrollment form WITHOUT the good intention fee. They need to be able to show there is an interest and a need to extend this service. They need the information by February 28.

Dry-Redwater Regional Water Authority

DRWA is a rural water system being designed for construction in the counties of McCone, Dawson, Richland and Prairie. Our goal is to sustain a rural water system and provide high quality drinking water at a reasonable rate.

ENROLLMENT DEADLINE IS FEBRUARY 28, 2013

FOR FINAL CONSTRUCTION DESIGN

If you are interested in good quality water, please contact us immediately!

TEL: (406) 485-3792

Dry-Redwater Regional Water Authority (DWRA)

drwa@midrivers.com
www.midrivers.com/~drwa

HURLEY'S OILFIELD SERVICES

- Potable Water • Sewer System
- Loaders • Communications
- Backhoe • Trucking
- Skid Houses • Porta Potties

406-742-5312
Fairview, MT

NEU CONSTRUCTION, INC.

Oil Field Roads & Locations

- Reclaim Work
- Gravel & Scoria Hauling

Fairview, MT
406-742-5549

LONG X BOTTLE SHOP

In-store specials every week. Check out our hard ice cream!

8 a.m.-9 p.m. Hwy. 85, Watford City
Mon.-Sat. 701-444-3335
1-5 p.m. Sun.
(Located in Long X Visitors Center)

Sports Booster WEEKLY SCHEDULE

Basketball

Wednesday, February 20

Eastern C Divisionals at Wolf Point:
Girls: Hinsdale vs Circle, 2:30 p.m.;
Nashua vs Fairview, 4 p.m.;
Culbertson vs Scobey, 5:30 p.m.,
MonDak vs Saco/WW, 7 p.m.

Thursday, February 21

Sidney at Billings Metra: Girls: Sidney vs Glendive, 4 p.m.; Billings Central vs Miles City, 8 p.m.
Sidney at Billings Metra: Boys: Sidney vs Miles City, 2 p.m. Glendive vs Hardin, 6 p.m.

Eastern C Divisionals at Wolf Point:
Boys: Nashua vs Culbertson, noon;
Hinsdale vs MonDak, 1:30 p.m.;
Fairview vs Frazer, 3 p.m.; Circle vs Scobey, 4:30 p.m.

Watford City Girls at Bowman, 8 p.m.

Friday, February 22

Dickinson Trinity girls at Watford City, 7:15 p.m.

Sidney at Billings Metra
Eastern C Divisionals at Wolf Point

Saturday, February 23

Sidney at Billings Metra (Divisionals)
Eastern C Divisionals at Wolf Point

Hockey

Friday, February 22

Sidney Girls 12U at Crosby, 6:30 p.m.
Watford City Jr. Gold at Sidney, 7:30 p.m.
Bismarck Bantams at Watford City, 6:30 p.m.

Saturday, February 23

Sidney Girls U19 at Williston, 11:45 a.m.
Mandan Bantam at Sidney, 10:30 a.m.
Mandan Bantam at Watford City, 5 p.m.

Support Your Favorite Team

Be Sure To Thank The Sports Booster Schedule Sponsors On This Page

Family Dining

POWDER KEG

Fairview
406-742-5180

Open at 4:30 p.m. Tues.-Fri.
2 p.m. Sat. & Sun.

HOT STUFF PIZZA

FOOD ON THE GO

Farmers Union Oil Co.

101 S Main • Watford City
701-444-3639

RTC

Smarter. Better. Faster.

www.RTC.coop

VOICE • DATA • VIDEO

The Roundup Classifieds

Reach Over 21,000 Readers Each Week
In Eastern Montana & Western North Dakota
And Always On The Internet at roundupweb.com
(Paypal required for online purchases)

\$7 up to 30 Words
Classy Deadline: Noon Monday

Add a photo to your classy online!
(Additional Charge)

HELP WANTED

CARRIERS WANTED
Need extra cash or want to get some exercise? We have carrier routes available in most parts of Sidney. Call 406-433-3306, or fill out application at The Roundup, 111 W. Main, Sidney.

COOKS, DISHWASHERS & SERVERS

Wage DOE. Apply in person at Cattle-Ac, 119 N. Central Ave., Sidney, MT.

HELP WANTED

Panini's Pizzeria is now hiring cooks and waitresses for

their new restaurant in Yellowstone Marketplace. Contact 541-510-5348 or stop by and pick up an application.

HELP WANTED

Do you need a position where you get back more than you receive? Where you are told you look nice even on your worst days. ROI has full time and part time positions available for direct care professionals. Training is provided. FT includes health insurance, housing allowance, savings for retirement,

bonus, and personal time off with wage starting at \$10.00 or \$10.25 depending on the shift with six month raise. PT includes housing allowance, savings for retirement and bonus with wage starting at \$9.50. Variety of hours and shifts open. Call Tami @ 488-3341, or apply @ Richland Opportunities, Inc. 1100 Silurian Lane, Sidney.

DENTAL HYGIENIST

Looking for a motivated hygienist to join our team. State of the art, comprehen-

sive, general, and cosmetic practice. Call 406-433-7645.

GYMNASTICS INSTRUCTOR NEEDED

Sidney Gymnastics Club is currently looking for an outgoing individual to instruct Wheelers Class, Mon. & Wed. 4 p.m. - 5 p.m. & Tumblebugs Class Tues. 3 p.m. & Friday 3 & 4 p.m. No experience necessary, willing to train. For more information please call Coach Pat McWilliams, 406-478-9101.

BARTENDER NEEDED

Bartender needed at the Elks Lodge, apply in person 123 3rd st. SW, Sidney.

SEASONAL HELP NEEDED

Crop Production Services, Fairview, MT, is looking for seasonal full-time help from the end of March to the end of September. This job requires you to be able to load/unload boxes up to 60lbs. and be able to drive a forklift. Will be delivering agricultural chemicals in northeast Montana and northwest North Dakota. Must have CDL with

HazMat endorsement if not will help in getting one. Must also have a clean driving record and be able to drive pickups along with fifth-wheel trailer. Call 406-742-8800, ask for Greg or Cathy.

REAL ESTATE

LAND FOR SALE
Commercial and residential land available, two miles north of Arnegard, ND. Excellent location for travel to Watford City and Williston. 701-842-2168 or 701-570-8108.

Xango Mangosteen Juice
The Carpenter's Storehaus
Your Local Bible Book Store
Sidney, MT
406-433-3355

Stockman Bank
Member FDIC
Montana Banking. Pure & Simple.
We are a Montana-born company, built on western values, focused on creating long-standing relationships through integrity, expertise and results. Join us in our Sidney office as an:
Ag Loan Assistant or Customer Service Representative
To view job opportunities, visit us and apply on-line at www.stockmanbank.com
EOE

Help Wanted

Factory Labor:
 • **\$14.80/hour; Bid jobs up to \$16.22/hour**
 • **Opportunity for advancement to full time positions**
 • **On the job training, overtime may be available & Employee Referral Program**

Sidney Sugars Incorporated has the following positions open:

- **Maintenance Electrician:** \$22.21 hour starting; \$26.18 and full time with proven competence Requires successful completion of employer administered written test.
- **Boiler Operator:** Class 1 or 2 licence \$26.18. Class 3 \$21.95 hr with willingness to learn. Requires Montana or transferable Boiler Operator License.
- **Machinist:** \$22.21 hour starting; \$26.18 and full time with proven competence. Responsible for, but not limited to, operating a variety of mechanical machinery. Welding and cutting skills also beneficial.

Full Time benefits are:

- Holiday, Vacation and sick pay
- Insurance for medical, dental and life
- Pension and 401 (k)

Apply in person or request an application from:
Sidney Sugars Incorporated
 35140 County Road 125 - Sidney, MT - 406-433-9320
Apply at Job Service Work Force Center
 211 N Central Ave - Sidney, MT
www.sidneysugars.com

Walk-ins are welcome!
Equal Opportunity Employer
Drug Free Workplace

Hefty SEED COMPANY
Agronomist Position Available Immediately

Hefty Seed Company has a top level agronomy position open now at the Sidney location. Individuals who have been in the field for a minimum of 3 years experience required. Six figure income + the perks. Work for an outstanding company and a leader in the field!

For more information, call Hefty Seed Company Sidney: 406-488-4338 (HEFT)

At Sidney Health Center, we promote a Work-Life Balance...

Sidney Health Center's most valuable resource is the people who serve our patients, residents and guests.

9 Out of 10 Employees Agree:
"I don't have to choose between my job and family!"

Join our team!

EMPLOYMENT OPPORTUNITIES

- Clinic Receptionist
- Donor Research Coordinator - FCC
- Extended Care Facility
 Certified Nurse Assistant
 LPN/RN Night Nurse
- Lodge
 Environmental Services
 Lead Food Services Supervisor
 Resident Assistant
- Patient Financial Counselor
- Payroll Supervisor

TOP 100

SIDNEY HEALTH CENTER
 Exceptional Care for Life

For additional information or to apply online, please visit our website or contact:
 Marilyn Olson - Phone: (406) 488-2571
mjolson@sidneyhealth.org
 216 14th Ave SW - Sidney, MT

Visit Our Website at: www.sidneyhealth.org

Roosevelt Medical Center Culbertson, MT

Tel: 406.787.6401 www.rooseveltmedical.org

Current Employment Opportunities:

Dietary Supervisor	Registered Nurses
Licensed Practical Nurses	Part-time Dietary Aide
Certified Nursing Assistants	Clinic Receptionist

RMC benefits: Health & Life Insurance, 401K, Extended Illness Bank, Personal Time Off, and Competitive Salaries.
 For more information please call Audrey at 406.787.6401 for Clinic position please call Amber at 406.787.6400.



QUALITY SERVICE • CARING PEOPLE • JOIN OUR TEAM!

FOR SALE
1973 Magni. 14x70. Has newer stove, newer remote dishwasher, waterheater recently replaced, clothes washer & dryer, window type airconditioner. Comes with large deck, 20x? petition, sizable front porch. Has bolt on type hitch. A steal at \$3,500. Located in Glendive. Call for more info. A must see item! 406-939-1451.

LOTS OF CHARM
House & acreage for sale in Vida, MT, south of Wolf Point. 2.2 acres, lots of apple trees & huge pine trees. Total of 6

bedrooms, 2 full bathrooms, large family room in the basement. Lots of extras, Price Reduced to \$185,000. 406-488-6183 or email debschmart@gmail.com.

FOR RENT
APARTMENT FOR RENT
Splitting of 2 bedroom apt. in Sidney, MT. \$850 first and last month's rent due. Rent includes electric, cable, heat and garbage. Available immediately. 715-699-2146.

LOG HOME FOR RENT
Newly remodeled log home for rent. 2bed, 1bath, fully furnished, incl. dishes and grill on deck. 18 miles South of Watford City. Nice, quiet location. No pets/smoking. Will do a background check. Call 701-260-1515.

HOUSE FOR RENT
2 bdrm. house, fully furnished, 2-car oversized garage, util. paid, located between Sidney and Savage on the Yellowstone River. \$2,000/mo. plus down payment. Call Lee, 406-978-3714.

REMODELED ROOMS FOR RENT
Remodeled, furnished rooms for rent, all util. including T.V. and internet paid, washer and dryer available, \$720/mo., Sidney. Call 406-489-1467 or 218-234-1161.

SERVICES
WELDING
Welding & repair work. No job is too small. Portable welder, reasonable rates. 701-444-2936.

COMPLETE SERVICE CENTER
The Roundup provides free Fax service at Meuchel Computer Services, Watford City, ND, for all news, photos & advertising copy. You may drop your Roundup payments at Meuchels.

WINDSHIELD REPLACEMENTS
Lowest price around. Quick service. Over 300 windshields in stock for cars, pickups & semis. Magrum Motors, 1820 2nd St. W., Williston. 701-572-0114.

FARM & RANCH MINERALS & SUPPLEMENTS
Complete line of minerals & supplements. Protein & mineral tabs for cattle, horses & sheep. All types of liquid feed for livestock. Calving supplies. R&J Ag Supply 406-488-1953, 406-480-2006, 1-800-233-2499, Sidney, MT.

VERMEER HAYING EQUIPMENT
See us today for all your haying & feeding equipment, sweeps & farm oil. Anderson Vermeer Sales & Service. Open Mon.-Fri., 8 a.m.-5:30 p.m. 701-828-3358 or 701-828-3482 (after hrs.). Alexander, ND.

20' FLEXICOIL NO TILL AIRSEEDER FOR SALE
8000 series no till double shoot, double disc airseeder with 1330 aircart. Hydraulic folding. Seeding tool is 3-

point mounted, compact design for short turning radius. Call Doug at 406-769-2052.

MISCELLANEOUS FOR SALE

FIRE RESISTANT
Fire resistant clothing available at The Other Place, Culbertson, MT. 406-787-5211.

SHEDS FOR SALE
\$3,000, 10x16, wood frame, metal outside, choice of door, on skids, will deliver or build on-site. Call 406-274-2512.

GUN FOR SALE
DPMS Oracle .223 5.56, brand new in box. Collapsible stock, \$1,800. Call 406-478-9489.

FOR SALE
13,500 watt Coleman Generator, \$3,000; 37 gal. pickup service tank, \$350; 8x20 shipping containers (new), \$5,600; 40 gal. shop air compressor with hose and reel (new), \$375; 35 gallon water tank with legs, \$75; light welding table, \$20; 40lb. aluminum propane bottle, \$50; 4-P265/7V/R-17 Goodyear Wranglers on aluminum GMC wheels, \$1,200; 1 1/2 nylon rope with chain ends, \$70, call 406-482-8057.

WANTED
SIDNEY COMBAT CLUB
We train men & women for mixed martial arts competitions, self-defense and conditioning. Now meeting at

Sidney Healthworks; Tues. 6:30- 8:30 p.m., Wed. 7:30- 8:30 p.m., Thurs. 6:15- 7:15 p.m., Fri. 5:30- 7:30 p.m. \$35/month. For more information, call Barry, 406-480-2024.

DEER & ELK ANTLERS
Deer & elk antlers, brown or white, sheds, racks, or mounts. TOLL FREE 1-866-245-9139.

NEW CHURCH LOOKING FOR A HOME
Looking for a building to purchase or lease. Call 406-480-5827 or email countryboy925@gmail.com.

VEHICLES
1971 DODGE PICKUP
1971 Dodge D 100 pickup, 2WD, 318 motor, no power steering, w/60,000 original miles, runs good. Asking \$1,500, prices are somewhat negotiable. Call Blaine Karst at 406-742-5427 or 406-480-5915.

RECREATIONAL VEHICLES
1972 MFG BOAT
1972 MFG 14' boat w/ 80 horse Evinrude motor, 2 stroke, electric start, power trim, 2 six-gallon gas tanks, runs good, asking \$1,200, prices are somewhat negotiable. Call Blaine Karst at 406-742-5427 or 406-480-5915.

GIVE AWAY
BED SETS
Two full size mattress & box spring sets w/frame, in good condition. 701-842-2556.

MISCELLANEOUS
GLENDIVE GUN SHOW
E.P.E.C. Bldg. 313 S. Merrill. March 1,2 & 3. Show hours are from Friday, 4 p.m. to 9 p.m., Saturday 9 a.m. to 6 p.m., and Sunday 9 a.m. to 3 p.m. Questions or reservations, call Ernie at 406-377-3969.

Need Storage?
• Commercial • Residential
• Secure Steel Units

5x10'	\$61
10x10'	\$79
10x15'	\$94
10x20'	\$109
10x25'	\$124
10x30'	\$139

SUNRISE MINI STORAGE
Next to the McDonalds in Sidney
Call Today 406-433-6464

HEADQUARTERS FOR STOCKMEN
Williston Saddlery
14096 West Front Street - Williston, ND 58801
4 1/2 Miles West on Hwy. 2

- Trailers
- Saddles & Tack
- Complete Feed Line
- Livestock Equipment
- Animal Health Products

*"If ya wants it - we gots it.
If we ain't gots it - we can gots it.
If we can't gots it - ya don't really wants it!"*

TELEPHONE (701) 572-2267

Full Line of Calving Supplies

The Roundup Auto Trader

2010 Dodge 3500 Diesel
Mega Cab Laramie. Fully loaded. Bed cover, bed rug, custom wheels with Boss V Snow Plow
58,000 miles
Call 406-480-9219

Only \$17 A Week!!

If you run it for 2 weeks & it doesn't sell, we'll run it for 2 more weeks

FREE!!!
Email: classads@esidney.com
Call: (406) 433-3306 for details.

\$42,000

S&S Motors

See the CLEARANCE tag specials!

2009 GMC Yukon XL Denali, red, 31k mi	\$44,995
2012 GMC Yukon XL SLT, silver, DVD, sunroof, 21k mi	\$43,995
2012 Buick Enclave, red, 22k mi	\$35,995
2012 Ford Explorer Limited, silver, sunroof, 60k mi	\$34,995*
2011 Ford F250 XLT, silver, 39k mi	\$32,995
2011 Ford F250 XLT, white, 47k mi	\$31,995
2011 GMC Sierra SLE, gray, 17k mi	\$31,995
2011 Ford Edge Limited, black, 31k mi	\$29,995
2012 Jeep Grand Cherokee Laredo, gray, 24k mi	\$29,995
2011 Ford F250 XLT, red, 33k mi	\$29,995
2011 Ford F350 XL, white, 60k mi	\$27,995*
2012 Ford F150 STX, blue, 17k mi	\$27,995
2010 Ford F150 XLT, tan, 32k mi	\$26,995
2010 GMC Sierra 1500, silver, 35k mi	\$24,995
2006 Dodge Ram 2500, white, diesel, manual, 117k mi	\$23,995
2007 GMC Yukon, white, 78k mi	\$23,995
2011 Chevy Equinox LT, mocha, 43k mi	\$22,995
2010 Jeep Wrangler Sport, white, 28k mi	\$22,995
2011 Ford Escape Limited, red, 47k mi	\$21,995
2007 Chevy Tahoe LT, blue, DVD, nav, 98k mi	\$21,995*
2008 Honda Ridgeline, black, 87k mi	\$20,995
2006 Ford Lariat, tan 80k mi	\$19,995
2008 Ford Edge SEL, light blue, 74k mi	\$16,995*
2006 Ford F350 XLT, white, Ext. cab, 103k mi	\$15,995
2008 Mercury Mariner, silver, 90k mi	\$14,995
2005 GMC Sierra SLC, black 162k mi	\$13,995
2005 Jeep Grand Cherokee Limited, gray, hemi, DVD, 103k mi	\$12,995*
2008 For Taurus X SEL, silver, 89k mi	\$11,995
1999 Ford F250 XLT, tan, Ext. cab, diesel, 139k mi	\$9,995
2006 Ford Escape XLT, silver, 107k mi	\$9,995
2003 Honda Accord EX, blue, 131k mi	\$7,995
2005 Ford Taurus SE, blue, 81k mi	\$6,995
2006 Pontiac G6, gray, 166k mi	\$5,995
2002 Pontiac Grand Am GT, silver, 103k mi	\$4,995
2003 Buick Lesabre, white, 131k mi	\$4,995

www.sandsmotorsinc.com
444-2341 or Toll Free - 800-584-9205 • Watford City, ND

Wanted
Food Vendor
Busy corner in Sidney, MT.
Power Available
(406) 480-1913

Mini-Storage

STORAGE UNITS AVAILABLE

20X20 • 10X20
10X16 • 8X9

Sidney, MT
482-3799 or 482-2666

The Roundup

Reaching over 8,400 Households in Western North Dakota and Eastern Montana Every Week

Classified Ad Order Form (Please Print)

1	2	3	4	5
6	7	8	9	10
11	12	13	14	15
16	17	18	19	20
21	22	23	24	25
26	27	28	29	30 \$7.00
31 \$7.10	32 \$7.20	33 \$7.30	34 \$7.40	35 \$7.50 (etc.)

\$7.00 for 30 words or less; additional words 10¢ each

Number of words _____ x Number of Times _____ = Cost \$ _____

Payment Must Accompany Ad

Name _____

Mail To:
The Roundup
P.O. Box 1207, Sidney, MT 59270

Lunch Menus

Sidney Schools

Thurs., Feb. 21: No School
 Fri., Feb. 22: No School
 Mon., Feb. 25: Chicken burger, cheesy potatoes, diced carrots, fruit cocktail.
 Tues., Feb. 26: Hot dogs, french fries, peaches.
 Wed., Feb. 27: Spaghetti w/ meat sauce, tossed salad, breadsticks, pears.

Richey Schools

Thurs., Feb. 21: Chicken parmesan pasta w/ sauce, bread, fruit & veggie.
 Fri., Feb. 22: Fish sandwich, salad bar.
 Mon., Feb. 25: Chicken nuggets, mac & cheese, corn, oranges.
 Tues., Feb. 26: Pork chop sandwich, fries, green beans, apples.
 Wed., Feb. 27: Super salad bar.

E. Fairview School

Thurs., Feb. 21: No school
 Fri., Feb. 22: No school
 Mon., Feb. 25: Baked ham, sweet potatoes, corn, apples.
 Tues., Feb. 26: Chili, corn bread, fresh veggies, fresh pineapple.
 Wed., Feb. 27: Breakfast for lunch.

Fairview School

Thurs., Feb. 21: No school
 Fri., Feb. 22: No school
 Mon., Feb. 25: Chef salad, egg, cheese sticks, oranges and breadstick.
 Tues., Feb. 26: Soup and sandwich, raw vegetables and apples.
 Wed., Feb. 27: Super nachos, rice, raw vegetables and pears.

Savage School

Thurs., Feb. 21: Baked potato bar, broccoli, pears.
 Fri., Feb. 22: Super nachos, refried beans, mandarin oranges.
 Mon., Feb. 25: Scalloped potatoes and ham, corn, mandarin oranges.
 Tues., Feb. 26: Lasagna, cottage cheese, french bread, green beans, pineapple.
 Wed., Feb. 27: Grilled cheese, tomato soup, fruit.

Lambert School

Thurs., Feb. 21: Chicken or beef enchiladas, fresh veggies, oranges.
 Fri., Feb. 22: Hamburger gravy, mashed potatoes, corn, apricots.
 Mon., Feb. 25: Chicken patties, mashed potatoes, gravy, green beans, cake.
 Tues., Feb. 26: French dip, baked potato, cream corn, apple crisp.
 Wed., Feb. 27: BBQ pork, baked beans, potato salad, mandarin oranges.

Culbertson School

Thurs., Feb. 21: Super nachos, mandarin oranges.
 Fri., Feb. 22: Au gratin potatoes and ham, green beans, pears.
 Mon., Feb. 25: Beef stroganoff, carrots, peaches.
 Tues., Feb. 26: Chicken strips, french fries, apricots.
 Wed., Feb. 27: Sweet n' sour meatballs, rice, pears.

Bainville School

Thurs., Feb. 21: Chili, breadsticks, celery w/ peanut butter.
 Fri., Feb. 22: Chicken or shrimp alfredo, dirt cake.
 Mon., Feb. 25: Chicken burger, FF, broccoli normandy, pears
 Tues., Feb. 26: Ham and scalloped potatoes, carrots, 1/2 banana, dinner roll.
 Wed., Feb. 27: Goulash, corn, bread, fruit.

Rau School

Thurs., Feb. 21: No school
 Fri., Feb. 22: No school
 Mon., Feb. 25: Chicken gravy, mashed potatoes, carrots, pears.
 Tues., Feb. 26: Breakfast for lunch.
 Wed., Feb. 27: Italian dunkers, green beans, peaches.

PRESIDENTS' DAY SALE

2012 Chevy MALIBU

GREY MET. EBONY, PW, PL, TILT, SC, A/C, AM/FM/CD, U5176A, 26,563 MILES



\$16,995

2009 Chevy 1500 CREW

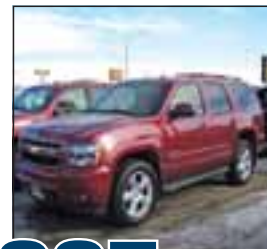
SILVER/EBONY CLOTH, PW, PL, TILT, SC, P. SEAT 5.3 V8, ATOD, A/C, 4X4, AL WHEELS, U4865A, 26,712 MILES



\$27,995

2007 Chevy TAHOE

PW, PK, TILT, SC, AM/FM/CD, 4WD, 8 PASS, AL WH, SPORT RED MET/EBONY CLOTH, G4794B, 83,142 MILES



\$23,995

2008 Cadillac EXT

AWD, BLK/EBONY LTHR, PW, PL, TILT, SC, 6.2 V8, AWD, DVD, SUNROOF, NAV, NEW TIRES, CHROME 22" WHEELS, K4272A, 79,643 MILES



\$29,995

2011 Chevy 1500 CREW LTZ

PW, PL, PWR SEATS, HTD SEAT, 7 LT, SC, AM/FM/XM/CD, 6" ASSIST STEPS, 20" WHEELS, ACCESS COVER, BOX RAILS, SILVER/TITANIUM LEATHER, 36,669 MILES, STK#C4923A



\$31,995

2012 Ford FUSION SE

PW, PL, TITLT, SC, AUTO, BLACK/EBONY CLOTH, U5181A, 23,187 MILES



\$17,995

2012 Jeep LIBERTY

4.4, V6, PW, PL, A/C, TILT, SC, AM/FM/CD, SILVER/EBONY, U5182A, 37,838 MILES



\$18,995

2012 Dodge AVENGER

PW, PL, STILT, SC, AM/FM/CD, GREY MET/EBONY CLOTH, U5178A, 14,374 MILES



\$16,995

2011 GMC YUKON DENALI

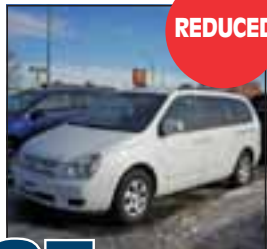
AWD, V8, 6.2 L, AT, A/C, AUTO RIDE, 20" CHROME WHEELS, PW, PK, TILT, SC, AM/FM/XM/CD, NAV, DVD, SUNROOF, MOCHA STEEL, EBONY LEATHER, 45,494 MILES, STK#4975A



\$43,995

2008 Kia SEDONA

AT/AC, TILT, SC, PW, PL, AM/FM/CD, CRUISE, C4268B, 95,275 MILES



\$7,995

2012 Dodge RAM 3500

PW, PL, P SEAT, A/C, TILT, SC, CUMMINS DSL, AUTO, LONGBOX, W/5TH WH HITCH, C4871A, 10,513 MILES



\$39,995

2011 Ford F250 S. DUTY

6.7 DSL, LTHR, PW, PL, TILT, SC, P SEATS, BLUE/GRAY, CLOTH, C5160A, 73,552 MILES



\$37,995

2010 Chevy DURAMAX DSL

SILVER/TITANIUM LTHR, PW, PL, TILT, SC, P SEATS, HTD SEATS, ALLISON GSD AUTO, 4X4, SPRAY LINER, NERFS, C4565A, 52,731 MILES



\$39,995

2013 Ford EDGE AWD

PW, PL, SC, TILT, LAXOR BLUE/EBONY CLOTH, AL WHEELS, U5179A, 21,471 MILES



\$29,495

2010 GMC SIERRA DEANLI

6.2L 403HP, V8, PW, PL, TILT, SC, P SEATS, HTD/CPPLD SEATS, 20" CHR WH, DIAMOND WHITE, COCOA CASH INT, G4955A, 17,885 MILES



\$39,995



TAX TIME IS CAR TIME!

Call The Credit Doctor Mark Waggoner or apply online at www.ndcreditdr.com

Guaranteed Credit Approval!



Murphy MOTORS



1801 2nd Ave. W. Williston, ND
 Call 1-800-888-2927 or 701-577-2927

Hours: Mon. 8am-8pm ; Tues.-Fri. 8am-6pm; Sat. 9am-5pm

www.murphymotors.com

SEE THESE SALES CONSULTANTS FOR QUALITY CAR BUYS!

