

# The Roundup

PRSRT STD  
U.S.  
POSTAGE  
PAID  
The Roundup  
ECRWSS  
Postal Customer

Phone (406) 433-3306  
Fax (406) 433-4114  
E-mail address:  
info@roundupweb.com  
www.roundupweb.com

Business Office:  
Located at 111 West Main  
Sidney, MT

Mailing Address:  
P.O. Box 1207  
Sidney, MT 59270

Wednesday, April 7, 2021

Volume 47 • Number 9

## Wildfire Rages In Theodore Roosevelt National Park's North Unit

Multiple agencies and fire response units from across the region have been battling a wildfire in the Theodore Roosevelt National Park's North Unit since Saturday. The Theodore Roosevelt National Park Facebook page posted the following statement on April 5:

*On Saturday April 3, a fire ignited just outside the north boundary of the North Unit of Theodore Roosevelt National Park. Sunday, April 4, fire crews completed a successful back burn along US 85 and the park road in an attempt to contain the fire in the northeast section of the park.*

*The North Unit of the park remains closed to the public at this time. Fire crews from US Forest Service, National Park Service and local fire departments are currently fighting the fire and will be re-assessing as conditions change.*

*Fire restrictions are in place for all units of the park. Campfires and the use of*



Photo shared on Theodore Roosevelt National Park's Facebook page. Courtesy of Nick Ybarra.

*non-propane camp stoves are not allowed at this time. Please use caution when visiting the park, as fire danger is very high.*

McKenzie County issued a Fire Emergency and

Burn Ban as of March 2 due to the extremely dry conditions in the area. Both McKenzie and Williams counties remain in a high fire danger rating.



Photo shared on Sidney Volunteer Fire Department's Facebook page.

## Burgum Surveys Wildfire In Billings County, Thanks Firefighters For Keeping Residents, Medora Safe

Bismarck - Gov. Doug Burgum visited Billings County to survey areas damaged by a wildfire that broke out Thursday, April 1 thanking the firefighters and emergency services personnel from more than 20 agencies who fought the blaze and successfully kept it from reaching the city of Medora, which had been evacuated as a precaution.

"We are deeply grateful to the Billings County and Medora fire departments, the North Dakota National Guard, the U.S. Forest Service, North Dakota Forest Service, North Dakota De-

partment of Emergency Services, National Park Service, and all the other local, state and federal team members and volunteers who collaborated to keep the wildfire contained and residents safe," Burgum said.

"Because of their quick action, teamwork and communication, the wildfires were contained, saving lives and property, including historic Medora," the governor added. "As drought conditions persist, we will continue to keep resources at the ready and encourage North Dakotans to observe burn bans and follow safety pro-

ocols to prevent wildfires."

Burgum declared a statewide wildfire emergency on Thursday enabling the North Dakota National Guard to deploy two UH-60 Black Hawk helicopters with water buckets to help fight the fire. Earlier Thursday, Burgum had placed the Guard on standby to provide help if additional resources were needed to respond to a growing number of wildfires in North Dakota as extreme drought conditions continue to spread across the state.

During a press conference held Friday in Medora against the backdrop of

scorched hills next to the Burning Hills Amphitheatre, the governor noted that the area burned by wildfires so far this year in North Dakota – over 30,000 acres – is more than triple the 9,200 acres that burned in wildfires during all of 2020. Eight counties saw wildfires on Thursday alone. This week's National Drought Mitigation Center report shows 47% of North Dakota in extreme drought – up from 27% last week – with 38% in severe drought and 15% in moderate drought.

The Billings County fire was about 50% contained

Friday afternoon and had burned more than 3,000 acres but resulted in no injuries, deaths or lost structures, Burgum noted.

"This is a credit to all of the volunteers, all of the firefighters and all of the leadership that went into this," he said during the press conference.

For information on how to prevent wildfires, or to view maps showing current burn ban restrictions and fire danger levels, visit [www.ndresponse.gov](http://www.ndresponse.gov).

## Boys & Girls Club Of The MonDak Out Of The Gate Kentucky Derby Gala Sidney April 10

By Jess Lyons

Looking for something fun to do this weekend, then the fourth annual Out of the Gate Kentucky Derby Gala might be what you're looking for at Richland County Event Center, Saturday, April 10, 6-10 p.m.

This year will be a tad different because of COVID-19, including social distancing, pre-assigned seating, dinner served instead of a buffet, masks are recommended but not required.

Electronic bidding will be featured once again this year, the VIP Sponsorship Pre-event table will be featuring horse races, a wine/Crown Royal pull, as well as heads and tails which starts at 4:45 p.m. with activities beginning at 5 p.m. The Gala's menu service will be an option between chicken or brisket.

Tickets are \$90/person and are available at BGCDerby21.givesmart.com or by texting BGCDerby to 76278Tickets, tickets can also be purchased at the Boys and Girls Club office during regular business hours or by calling 406-433-6763.

## Sidney Lions Club Celebrates 50 Years Of Service

Submitted by  
Kristin Kennedy  
Sidney Lions Club

Sidney - Sidney Lions Club will celebrate its 50th year anniversary on Saturday, May 15 at Sidney Elks Lodge.

Since the club's chartering in 1971, its members have worked on a variety of projects in the local community, such as Adopt-a-

highway, Christmas Wreath, Flags for First Graders, Lions Trap Shoot fundraiser for Scholarships, Meals-on-wheels, Mint Sales, Peace Poster, People Movers the Richland County Fair & Rodeo, Pie Social at Crestwood & the Lodge, Youth Track Meet, Sight Screenings - just to name a few. Proceeds from past fundraising events have gone to scholarships,

flood victims, Camp Mak-A-Dream, Richland County Food Bank, area schools, local non-profits and many, many, more. Currently, the Sidney Lions Club is planning the Youth Track Meet on May 10 and Lions Trap Shoot on June 27.

According to Raymond Carlson, 2020-2021 Club President, "We are proud of our club's 50 years of ser-

vice to the community. The Lion club members thank everyone who contributes to this important work. You are truly helping Lions make a difference in our community."

To celebrate this milestone, the Club will host a 50th Anniversary celebration at the Sidney Elks Lodge, Saturday, May 15. Social hour will start at 5 p.m. with a Prime Rib Dinner and

program to follow. Tickets are available to all past, present, and future Lions on EventBrite by visiting [sidneylionsclub50th.eventbrite.com](http://sidneylionsclub50th.eventbrite.com). Live music from the Relics will begin at 8 p.m. and is open to the public. Groovy Retro Threads are encouraged.

The Sidney Lions Club has 62 members and meets on the 2nd and 4th Mondays at 12 p.m. at Sidney Moose Lodge. Lions clubs are a group of men and women who identify needs within the community and work together to fulfill those needs. For more information or to get involved with the Sidney Lions Club, please contact [sidney.lions.club@gmail.com](mailto:sidney.lions.club@gmail.com) or find us on Facebook Sidney Lions Club.

Lions Club International is the world's largest service club organization with more than 1.4 million members in approximately 46,000 clubs in more than 200 countries and geographical areas around the world.

## St. Matthew's Spring Fling Sidney May 8

On Saturday, May 8 from 7-11 p.m. the St. Matthew's Spring Fling will take place for Grades 6-8. This year the Semi Formal Dance will take place at Central School's Gymnasium. The admission is \$10 per person and the boys are asked not wear blue jeans, shorts or T-shirts and the girls should not wear shorts or pants but modest dresses are encouraged. There will be DJ music by Midnight Express. Masks will be required. For more information contact Colleen Haralson, 482-2680.








**REAL ESTATE FINANCING**  
For Home Purchases & Refinancing  
**Home Equity Loans Also Available**

**Janet Sergent**  
Real Estate Loan Officer  
NMLS ID# 525727  
www.richlandfcu.com

 **Richland**  
FEDERAL CREDIT UNION

201 W Holly St • Sidney, MT • 406-482-2704 | 18 E 2nd St • Culbertson, MT • 406-787-5890



**Yellowstone Chiropractic Clinic**  
(406)-433-4757 222 2nd. Ave. SW  
1-866-433-4757 Sidney, MT 59270

**Dr. Ryan Laqua**  
Chiropractic Physician &  
Certified Medical Examiner



• Sports Injuries • DOT Physicals  
• Personal Injuries & Pain Conditions

**WEEKLY FRAUD TIP**  
BROUGHT TO YOU BY  **Stockman Bank**

**COVID-19 VACCINE SCAMS**  
Keep an eye out for some of the fraudsters' tactics:


- Offers of something vague in the future for your money now.
- Emails, phone calls, knocks on the door from people claiming that the vaccine can be delivered to you.
- Offers for a generic version of the vaccine that claim to have received FDA approval.

**Politely decline and take any information to your known medical professional. If you suspect a scam, report it to the FTC at [ftc.gov/complaint](https://www.ftc.gov/complaint).**


Member FDIC | Equal Housing Lender 

**Richland County Transportation**  
**Is Open To Everyone!**

Ride to work, doctor, grocery store, swimming pool & so much more



**Call 433-RIDE (7433)**  
Reduced rates for advanced reservations

Follow us on  for any changes or cancellations

**AREA RECOVERY GROUPS**

**MONDAYS:**  
**12 p.m.** — AA Monday Noon Group, Matthew House Office, 416 2nd St. NW, Sidney, MT.  
**1 p.m. - 3 p.m.** — Grief Recovery Support group, First Lutheran Church music room, Watford City.  
**6 p.m.** — Al-Anon Family Group Meeting, Trinity Lutheran Church Ed. bldg., 214 S. Lincoln Ave., Sidney, MT.  
**7 p.m.** — Live Free Narcotics Anonymous, Church of God., 814 6th St. NE, Sidney, MT.  
**8 p.m.** — AA Group, Northern Pump & Compression, Watford City. Call 770-3603 or 770-2675 for directions or ride. Hotline/Info 701-609-8663.

**TUESDAYS:**  
**7 p.m.** — AA Welcome Home Group, Sunny's Family Restaurant, 102 E. Main St., Sidney, MT, Central Avenue Entrance.  
**7 p.m.** — 24-hour Women's AA group meeting, Northern Pump & Compression, Watford City. Hotline/Info 701-609-8663.  
**7 p.m.** — Live Free Narcotics Anonymous, Church of God., 814 6th St. NE, Sidney, MT.

**WEDNESDAYS:**  
**7 p.m.** — Live Free Narcotics Anonymous, Church of God., 814 6th St. NE, Sidney, MT.

**THURSDAYS:**  
**7 p.m.** — Live Free Narcotics Anonymous, Church of God., 814 6th St. NE, Sidney, MT.  
**7:30 p.m.** — Al-Anon Meeting, Presbyterian Church, 316 4th Ave. NE, Watford City, ND.  
**8 p.m.** — AA Group, Northern Pump & Compression, Watford City. Call 770-3603 or 770-2675 for directions or ride. Hotline/Info 701-609-8663.

**FRIDAYS:**  
**6:30 - p.m.** - 5 Stones - Faith Based Recovery meeting, Sidney First Church of the Nazarene, 606 9th St. SW, Back door is open.  
**7 p.m.** — Live Free Narcotics Anonymous, Church of God., 814 6th St. NE, Sidney, MT.  
**7 p.m.** — AA Welcome Home Group, Sunny's Family Restaurant, 102 E. Main St., Sidney, MT, Central Avenue Entrance.

**SATURDAYS:**  
**7 p.m.** — Live Free Narcotics Anonymous, Church of God., 814 6th St. NE, Sidney, MT.  
**7 p.m.** — AA Welcome Home Group, Sunny's Family Restaurant, 102 E. Main St., Sidney, MT, Central Avenue Entrance.  
**7 p.m.** — AA 24 group meeting, Northern Pump & Compression, Watford City. Hotline/Info 701-609-8663.

**SUNDAYS:**  
**7 p.m.** — Live Free Narcotics Anonymous, Church of God., 814 6th St. NE, Sidney, MT.  
**7 p.m.** — AA Welcome Home Group, Sunny's Family Restaurant, 102 E. Main St., Sidney, MT, Central Avenue Entrance.

**STATISTICS**

**LAKE WATER LEVEL REPORT**  
**Sakakawea**

Current Elevation.....1836.7  
Last Week's Elev. ....1836.9  
One Year Ago .....1840.2  
Release For Day (C.F.S.) .....18,000

**SIDNEY WEATHER DATA**

Source: MSU Eastern Agricultural Research Center

Date	High	Low	Precip.
March 29.....	56	20	0.001
March 30.....	29	10	0.007
March 31.....	49	6	0.000
April 1.....	70	21	0.000
April 2.....	70	27	0.000
April 3.....	76	30	0.000
April 4.....	78	29	0.000
Total 2021 YTD Precipitation.....			0.384

# Clean Williston Event Scheduled for April 24

**Submitted by Communications Strategist  
City of Williston, Caitlin Pallai**

Williston - In celebration of Earth Day on April 22 and in preparation for Band Day on May 8, the City of Williston's Spring Clean Williston event is scheduled for Saturday, April 24, 8 a.m.-12 p.m.

In the event of inclement weather, Clean Williston will be held on Saturday, May 1, and this change will be announced on City of Williston social media and [www.cityofwilliston.com](http://www.cityofwilliston.com).

Canceled in 2020 due to COVID-19, Clean Williston is a tradition going back over 20 years and is held biannually in the spring and fall.

"Clean Williston is one way to give back to your community," explained City of Williston Mayor Howard Klug. "Williston tries to provide opportunities for you and your family, and this is a way to demonstrate pride for what is happening in Williston."

Individuals and groups interested in participating in this year's Clean Williston event can register online for one of 34 zones. Register online at <http://bit.ly/CleanWilliston>.

Volunteers are asked to meet at 8 a.m. in Davidson Park located at 11th St. W and 9th Ave. W the day of the event. Individuals who do not register for a zone in advance are welcome and will be assigned to a zone!

Volunteers will receive a free Clean Williston t-shirt and a light, prepackaged snack. Public Works will provide safety vests, gloves, and garbage bags.

Full garbage bags can be left on the side of the road in each zone for pick up or individuals can bring their bags to Davidson Park for disposal.

Participants are also asked to return their safety vests, gloves, and any unused garbage bags.

In addition to collected trash, the following will also be accepted at Davidson Park:

- Wood – Two containers (trees and construction material) will be available. This service is free.
- Metal – One container provided by Pacific Steel and Recycling will be available. This service is free. Items that cannot be loaded by hand will be redirected to either recycling facility.
- Cardboard – Please breakdown boxes. This service is free.
- Tires – Individuals are limited to four tires per person. Chamley Pipe and Salvage will shred for free.
- White paper – The North Dakota Recycling Secure Shred truck will be available from 8 a.m.-12 p.m. for public shred. The first two boxes are free with additional boxes costing \$10 per banker's box.
- Individuals are encouraged to wear masks and practice social distancing where applicable. In addition, out of an abundance of caution, a community BBQ will not be held in conjunction with this Clean Williston event.

In addition to Clean Williston, the following events will be held later in the summer:

- Free Landfill Day – Saturday, May 15
  - E-Waste Day – Wednesday, June 9
- For more information on this story, please contact Caitlin Pallai, Communications Strategist, at 701-713-3800 or [caitlinp@ci.williston.nd.us](mailto:caitlinp@ci.williston.nd.us).

# One-Dish Meals

**Written by Carrie Krug  
MSU/Richland Co. FCS Extension Agent  
Submitted by  
Richland County Nutrition Coalition**

With spring and the summer months rapidly approaching, sometimes spending a lot of time in the kitchen making dinner and cleaning up the mess is the last thing we want to do. However, one-pot, skillet, or sheet pan meals might make this task fast, easy, and clean up a breeze. Many meals that we eat might already fit within the category of one-dish meals from soups and stews, one-pot casserole, crockpot or Insta pot dinners, skillet meals, and any dish that is made using only one-pot, pan, skillet, you get the picture.

Have you been thinking about trying a sheet pan meal that can quickly be cooked in your oven? Here are some tips and tricks from Sara Waldman (2016) in the Knowledge @ Noon "Sheet Pan Dinners" booklet as part of the Maris des Cygnes Extension District Master Food Volunteers with Kansas State Extension.

1. When selecting vegetables, try to pick ones that will cook at the same rate to help over or undercooking of vegetables, such as potatoes and beets together and mushrooms with asparagus. If you choose to intermix your vegetables (ones that will cook faster than others), try cooking the ones that will take longer, first adding the ones that take less time later in the cooking process.
2. Line your sheet pans for easy clean up with aluminum foil or parchment paper.
3. Try adding herbs and spices to your sheet pan dinners or anything that sounds good to you for flavor.
4. You can even marinate your selected meat before baking. Many proteins do best when they are marinated for a minimum of an hour and some overnight.
5. If worried about your sheet pan dinner, try adding a sauce to help finish the dish. Maybe a pesto, salsa, etc., is just what you need to add some flavor or texture to your dinner.
6. Try assembling the whole sheet pan meal ahead of time, covering, and refrigerating until ready to slide in your hot oven for extra busy nights.

With so many one-dish options out there, why not try something new? Make a one-pot pasta dish, sheet pan fajitas, or skillet chicken potpie. There are so many options that you can incorporate into your busy weeknight or weekend dinner or lunch meals. Make extra and use for additional meals throughout the week or freeze (in proper freezer containers) for later.

Are you looking for some great one-pan or one-pot recipes? Check out the Richland County Nutrition Coalition Facebook page at [www.facebook.com/1trcnc1](https://www.facebook.com/1trcnc1), and the Pinterest page at [www.pinterest.com/1trcnc1](https://www.pinterest.com/1trcnc1) for more information regarding this topic throughout the month of April.



**EVENTS**  
SEND US YOUR EVENTS!  
THE ROUNDUP: PO Box 1207 • 111 West Main • Sidney, MT  
406-433-3306 • Fax: 406-433-4114 • Email: [classads@esidney.com](mailto:classads@esidney.com)

**RICHLAND COUNTY**  
Events in Sidney unless otherwise listed. MT Zone.  
**Wed., April 7**  
10 a.m. -4 p.m. - **2021 Youth Art Show** - Showing through April 24. - **Cataclysm Exhibition** - Showing through May 29. - MonDak Heritage Center, Tues.-Fri., 10 a.m.-4 p.m.; Sat., 1-4 p.m. For more information call 406-433-3500, e-mail [mdhc@richland.org](mailto:mdhc@richland.org) or visit <https://mondakheritagecenter.org/>.  
**Mon., April 12 & 26**  
7 p.m. - **Snacks & Chats** - Anxiety & depression support group for teens ages 13-19. Board games, foosball, ping pong and treats. Pella Church, not church related.  
**Thurs., April 15**  
11:30 a.m. - **Richland Red Hatters Lunch Meeting** - Sidney Country Club. RSVP by April 14. Call Sylvia, 798-3882 or Margaret, 488-4613.  
**Fri., April 16**  
7 p.m. - **Sidney Gymnastics Club Designer Bag Bingo Night** - Tickets, \$50 (includes 12 games of bingo and 2 drink tickets) additional cards \$10. Cash and carry items available for purchase. Sidney Elks Lodge, 123 3rd St SW. Tickets can be purchased at The Shoppes at Peifer's General Store during business hours or message the Gymnastics Facebook page using Venmo.  
**Sat., April 17**  
10 a.m.-4 p.m. - **Open Studio Saturdays** - All participants must make an appointment call 406-433-3500 or email [mdhc@richland.org](mailto:mdhc@richland.org). Adults 18+ years old only, masks required, other restrictions apply. Take home an Art to go Kit for your little ones. MonDak Heritage Center. If you are unable to make it during open studio hours set up an appointment with Jessica, 406-433-3500. For more information e-mail [mdhc@richland.org](mailto:mdhc@richland.org) or visit <https://mondakheritagecenter.org/>.  
**Mon., April 19, May 3**  
6:30-8 p.m. - **Mothers of Preschoolers (MOPS) Meetings** - Open to all Moms with school aged children and younger. Sidney Lutheran Brethren Church, 1101 Madison Lane. No childcare provided. For more information call Stacy Abar, 406-672-1463.  
**Tues., April 20**  
12 p.m. - **Job Service Employers Committee Meeting (JSEC)** - Open to everyone. Reynolds Market conference room. For more information call Margie 406-433-1204 ext. 204.  
**Wed., April 21-Sat., April 24**  
10 a.m.-5 p.m. - **Create personal and festive Mother's Day art with your kids at MonDak Heritage Center** - Appointments need to be made in advance by calling 406-433-3500. Choose a clay fingerprint necklace (\$20) or an elephant plate (\$30-\$40).  
**Fri., April 30**  
6 p.m. - **Richland County Republicans Lincoln-Reagan Day Dinner** - All are welcome, \$40 adults, \$20 students. Sidney Elks Lodge. For more information call Sherry Mitchell, 406-488-3502.  
**Sat., May 8**  
7-11 p.m. - **St. Matthew's Spring Fling** - Semi formal dance, grades 6-8, Central School's Gymnasium, \$10 per person. DJ music by Midnight Express. Masks required. For more information call Colleen Haralson, 482-2680.

**McKENZIE COUNTY**  
Events in Watford City unless otherwise listed. CT Zone  
**Fri., April 9**  
6-8 p.m. - **Couples Sip 'n Paint Long X Art Foundation** - Two canvases, one painting, \$45 per couple, bring your own beverage, snacks provided, Rough Rider Center.  
**Sat., April 10**  
8 a.m.-4 p.m. - **American Red Cross Babysitter's Training Course** - Ages 11-15 interested in babysitting encouraged to attend. NDSU Extension Office, 205 6th St NW. Preregistration requested by April 7, call 701-444-3451 or email [marcia.hellandsaas@ndsu.edu](mailto:marcia.hellandsaas@ndsu.edu).  
4-6 p.m. - **Clay Fairy Class Long X Arts Foundation** - Create your own fairy house, for kids and adults. \$40 each. Rough Rider Center.  
5-9 p.m. - **Police vs. Fire Department Knockerball Hockey** - Doors open at 4 p.m., \$5 admission fee, cash bar until 9 p.m., Dave Hansen Arena, Rough Rider Center.  
**Thurs., April 15, 29**  
2-4 p.m. - **Food Giveaway with New Winter Hours** - First Presbyterian Church, 316 4th Ave. NE.  
**Sat., April 17**  
11 a.m.-2 p.m. - **Still Life Oil Painting Class Long X Arts Foundation** - Learn the art of oil painting while creating a still life. Tickets \$45, supplies provided no experience necessary. All ages and levels welcome. Rough Rider Center.  
3 p.m. - **Watford City Recreation Dodgeball Tournament** - Ages 16+, \$10/team (need minimum of 4 on a team) Rough Rider Center. To register visit [watfordcityparks.com](http://watfordcityparks.com).  
**Sun., April 18**  
2-4 p.m. - **Damsel In Defense Empower Hour Alexander**- Come experience self defense tools and accessories. Wild Flour Café & Bakery. For more information contact Tahya Papineau, [empoweredwithtahya@outlook.com](mailto:empoweredwithtahya@outlook.com); Facebook empowered with Tahya, 701-290-3946.  
**Tues., April 20**  
2-4 p.m. - **Food Pantry Handouts** - First Lutheran Church, 212 2nd St. NW. For more information call McKenzie County Extension Office, 701-444-3451 or visit McKenzie County Food Pantry Facebook page for dates, times and updates.  
**Wed., April 21**  
5-7 p.m. - **Clothing Embroidery Class Long X Arts Foundation** - Learn basic techniques of hand embroidery. \$20, bring your own clothing, supplies included no experience necessary. Rough Rider Center.

**WILLIAMS COUNTY**  
Events in Williston unless otherwise listed. CT Zone.  
**Sat., April 10**  
10 a.m. - **Sexual Assault Awareness & Prevention 5K Event** - Community gathering to raise awareness about the prevalence of sexual assault and relationship violence. Registration \$15, 10 a.m.; run/walk event, 11 a.m.; meal and speakers, noon; yoga and sound bath, 1 p.m.; Spring Lake Park. For more information contact [lacey.choicerecovery@gmail.com](mailto:lacey.choicerecovery@gmail.com).  
**Fri., April 16, 2-7 p.m. & Sat., April 17, 9 a.m.-6 p.m.** - **Western Area Builders Association 2021 Western North Dakota Home & Garden Show** - Something for everyone. April 16, free admission. April 17, \$5 per person, kids 10 and under free. Raymond Family Community Center. For more information, 701-572-5744 or [eo@willistonbuilders.com](mailto:eo@willistonbuilders.com).  
**Sat., April 17**  
11 a.m. - **Special Olympics North Dakota Polar Plunge** - To plunge participants raise a minimum of \$75 by collecting pledges from friends, family and the community, to cover the entry fee and Polar Plunge first incentive prize. Plunge registration, 11 a.m.-12:30 p.m.; plunges being 12:30 p.m. with Awards Ceremony following. Spring Lake Park. Register at [www.specialolympicsnd.org](http://www.specialolympicsnd.org). For more information call 701-746-0331 or email [info@specialolympicsnd.org](mailto:info@specialolympicsnd.org).

**DAWSON COUNTY**  
Events in Glendive unless otherwise listed. CT Zone  
**Sat., April 24**  
**Anton's Recycling Run** - 5km run to raise awareness of recycling opportunities in the community. Funds will go to Special Olympics and GROW. Uran Center, 1515 W. Bell St. For more information visit <https://www.plotaroute.com/route/1437553?units=km>.  
6:30-11:30 p.m. - **Glendive's 2nd Annual Gala** - Enjoy and evening out the family and friends while supporting Makoshika Wellness and DCDV. Catering, cash bar, music, silent auction, wine auction. Tickets \$50, Eastern Plains Event Center.





Feeding The Hungry Event

Reynolds Market Sidney store manager Loren Kutzler presents a donation of \$1,713.09 to Richland County Food Bank volunteers, from left, Candy Markwald, Gloria Yockim and Duane Pust. Money raised was part of the Feed the Hungry promotion. Locally, customers purchased specific items at Reynolds Market and part of the proceeds went to the local food bank. Over \$4,500 was raised in the Reynolds Market stores to assist the food banks in feeding our neighbors. Thank you to all who participated in this very worthwhile program. (Submitted photo)

Under the Northern Lights

Alexander held their prom on March 27 themed, “Under the Northern Lights.” Pictured is the Alexander prom court from left, Tianna Dwyer (Queen), Zechariah Albright (King), Drew LeBrun (Prince) and Corynna Turnquist (Princess). (Submitted photo)



American Red Cross Babysitter’s Training Course Offered In Watford City

Submitted by McKenzie Co. Extension Agent Marcia Hellandsaas

A workshop designed to help youth develop basic skills for babysitting will be held on Saturday, April 10 at the NDSU Extension Office, 205 6th St NW, Watford City. The course will start with 8:30 a.m. CT registration and will conclude by 4 p.m. CT. Anyone ages 11-15 interested in babysitting is encouraged to attend.

Topics to be included in the training are: leadership and learning to be a safe and responsible babysitter, basic care, safety and safe play and first aid.

Pre-registration is requested by Wednesday, April 7 at the NDSU Extension/McKenzie County. Please call 701-444-3451 to register or email marcia.hellandsaas@ndsu.edu.

The session will be taught by McKenzie County Extension Agent Marcia Hellandsaas.

**GAS OIL CHANGE**  
(includes multipoint inspection)  
**\$54.95\***

**DIESEL OIL CHANGE**  
(includes multipoint inspection)  
**\$84.95\***

Brake & Transmission Fluid change | Alignments | Tires  
Windshields | Cabin Filters | Wiper Blades | Towing

BUICK

CHEVROLET

GMC

CERTIFIED SERVICE

**Gem City**  
MOTORS

\* See dealer for details. Coupon required.

703 S. CENTRAL • SIDNEY, MT | WWW.GEMCITYMOTORS.COM | 406-433-3120

Helping generations achieve their goals.

**Kris Mrachek**  
CFP®, APMA®, AEP®  
Private Wealth Advisor

**Aaron Muzzy**  
APMA®, CRPC®  
Financial Advisor

1500 14th St W Ste 210  
Williston, ND 58801  
701.577.4697 | planwithLFP.com

Legacy Financial Partners  
Ameriprise Private Wealth Advisory Practice

Legacy Financial Partners a private wealth advisory practice of Ameriprise Financial Services, LLC. The Compass is a trademark of Ameriprise Financial, Inc. Ameriprise Financial Services, LLC. Member FINRA and SIPC. ©2020 Ameriprise Financial, Inc. All rights reserved.

**WE CAN GET YOUR VEHICLE READY FOR SPRING TRAVELING!**

**FRONTIER TIRES & GLASS**

EST. 2020

- Tires • Windshields • Brakes • Struts
- Alignments • Oil Changes
- Semi-Truck Wiring, Lights, Brakes & Tires
- Dot Inspections • And More!

Mon-Fri: 7am - 6pm • Sat: 7am - 2pm | 406-488-TIRE (8473)  
2650 S Central Ave • Sidney, MT (Old M&R Cycles Building)

Beauty is in Bloom

**Shari Twigg, MD**  
Board Certified in Aesthetic Medicine

**APRIL SPECIALS**

**Chemical Peels**

- Buy 4 sessions, get the 5<sup>th</sup> one free!

**Skinfinity**

- Buy 2 sessions, get the 3<sup>rd</sup> one free!

**IPL (Intense Pulsed Light)**

- Buy 4 sessions, get the 5<sup>th</sup> one free!

**Medical-Grade Skin Care**

- Purchase any Exfoliant, get 25% off a Cleanser!
- Buy Full Size Age Reverse System, get Ultra Firming Eye 25% off!
- In office or online!

**ADVANCED AESTHETICS**  
A Service of Sidney Health Center

Call now to schedule!  
406.742.5256

304 S. Ellery Avenue, Ste. 2 | Fairview, MT  
SHCAAdvancedAesthetics.org | f @

GREAT FUTURES START HERE.

**Out of the Gate Kentucky Derby Gala**

Date: Saturday, April 10, 2021

Time: 6–10 p.m.

VIP Sponsorship Table Pre-Event doors open at 4:45 with activities beginning at 5

Place: Richland County Event Center

Tickets: \$50/person through March 31  
\$90/couple through March 31  
\$60/person after March 31

Featuring: Interactive horse races, silent and live auction  
Southern cuisine

Tickets are available online at BGCDerby21.givesmart.com or by texting BGCDerby21 to 76278 Tickets may also be purchased at the Boys & Girls Club office during regular business hours or by calling 433-6763. Masks and social distancing are recommended.

Race Sponsor

Decorations Sponsor

Table Sponsors

Promotional Sponsors

Honorees: MonDak API



# The Roundup Classifieds

Get Up To 30 Words For Just \$9.25 • Deadline: Monday noon

Reach Over 21,000 Readers Each Week In Eastern Montana & Western North Dakota And Always On The Internet at [roundupweb.com](http://roundupweb.com)

(Paypal required for online purchases)

Add a photo to your classy online! (additional charge)

**Now Taking Credit Cards!**  
(5% charge added to all transactions)

**HELP WANTED**  
FULL-TIME AND PART-TIME TEMPORARY POSITIONS ARE AVAILABLE AT

**MSU EASTERN AG RESEARCH CENTER (EARC)**  
Wage starts at \$12/hour depending on experience

Check Us Out Weekly With:

# The Roundup

Monthly With:

Or Online At:

[RoundupWEB.COM](http://RoundupWEB.COM)



# FOR SALE



Sears X Cargo  
Lightweight Vehicle  
Luggage Carrier

## \$25<sup>00</sup>

# YELLOWSTONE Marketplace

406-489-1945 | 102 N Central Ave • Sidney, MT  
(Corner of Central Ave & Main St)

## Lunch Menus

**Sidney School**  
**Thurs., April 8:** Meatballs in gravy over potatoes, steamed broccoli, apple-sauce, hot rolls.  
**Fri., April 9:** Hot ham and cheese, cheesy potatoes, peaches, gelatin.  
**Mon., April 12:** Taco salad, orange wedges.  
**Tues., April 13:** BBQ pork sandwiches, baked beans, fried apples, chips.  
**Wed., April 14:** Homemade pizza, tossed salad, peaches.

**Savage School**  
**Thurs., April 8:** Mini corn dogs.  
**Fri., April 9:** Pizza sticks.  
**Mon., April 12:** Chicken alfredo lasagna.  
**Tues., April 13:** Senior meal - Gentry! Sub sandwiches.  
**Wed., April 14:** Senior meal - Taryn! Hamburgers on buns.

**Rau School**  
**Thurs., April 8:** French toast sticks, sausage links, scrambled eggs, apple-sauce.  
**Fri., April 9:** Soft shell tacos, lettuce, pears.  
**Mon., April 12:** Chicken sandwiches, fries, mixed fruit.  
**Tues., April 13:** Tater tot hotdish, corn, jello with fruit, dinner rolls.  
**Wed., April 14:** Breakfast sandwiches, hash browns, apple slices.

**Froid School**  
**Thurs., April 8:** Breakfast burritos, hash browns, go-gurts, fruit.  
**Fri., April 9:** Shrimp mates, sweet potato fries, veggies, fruit.  
**Mon., April 12:** Breakfast tater tot hotdish, rice pilaf, peas, fruit.  
**Tues., April 13:** Pizza pasta, bosco sticks, veggies, fruit.  
**Wed., April 14:** Kaya's day! Philly cheese steak subs, fries, veggies, fruit, sugar cookies.

**Bainville School**  
**Thurs., April 8:** Hawaiian chicken, rice, stir fry veggies, bananas.  
**Fri., April 9:** Spaghetti, garlic toast, caesar salad, apples.  
**Mon., April 12:** Soft tacos, taco bar, refried beans, mandarin oranges.

**Tues., April 13:** Chicken sandwiches, french fries, celery sticks, peaches.  
**Wed., April 14:** Beefaroni, garden salad, applesauce.

**Richey School**  
**Thurs., April 8:** Cheeseburgers, tater tots, broccoli, fruit.  
**Fri., April 9:** Sloppy joes, mixed veggies, fruit.  
**Mon., April 12:** Baked potato bar, fruit.  
**Tues., April 13:** Chicken broccoli casserole.  
**Wed., April 14:** Orange chicken, stir fry veggies, rice, fruit.

**Culbertson School**  
**Thurs., April 8:** Orange chicken, rice, pineapple.  
**Fri., April 9:** Corn dogs, fries, corn.  
**Mon., April 12:** Pizza, salad, applesauce.  
**Tues., April 13:** Soft shell tacos, refried beans, churros.  
**Wed., April 14:** Turkey roast, mashed potatoes, broccoli.

**Fairview School**  
**Thurs., April 8:** Sub sandwiches, pasta salad, veggies, fruit.  
**Fri., April 9:** No school.  
**Mon., April 12:** Hot dogs, fries, veggies, fruit.  
**Tues., April 13:** Totchos (taco tater tots) Spanish rice, fruit.  
**Wed., April 14:** Chicken cordon bleu casserole, veggies, fruit, buns.

**Alexander School**  
**Thurs., April 8:** Baked chicken breast or cod, rice pilaf, broccoli with cheese.  
**Fri., April 9:** Spaghetti or alfredo, garlic toast.  
**Mon., April 12:** Hot dogs or brats, macaroni and cheese.  
**Tues., April 13:** Hamburgers or chicken stroganoff, green beans, breadsticks.  
**Wed., April 14:** Breakfast for lunch.

**Watford City School**  
**Thurs., April 8:** Sloppy joes with ranch tater tots.  
**Fri., April 9:** Pepperoni french bread pizza, side salad.  
**Mon., April 12:** Fish sticks, macaroni and cheese.  
**Tues., April 13:** Chicken fajitas, Spanish rice.  
**Wed., April 14:** Cheeseburgers, sour cream fries.

and education. Schedule: Now through October, Mon.-Fri. 7 a.m.-4 p.m. Must be 16 years of age and older. Applications are available at EARC located one mile north of Sidney on Hwy 200 at 1501 North Central Avenue, calling 406-433-2208 or emailing [cherie.gatzke@montana.edu](mailto:cherie.gatzke@montana.edu). MSU-Bozeman is an AA/ADA/EEO/Vet Pref Employer.

**FREELANCE REPORTER**  
The Roundup Newspaper is looking for a Freelance position for reporter to take photos & write stories at a weekly regional publication. Must have computer skills, valid driver's license and reliable automobile. Short distance travel may be necessary. Required testing for: spelling & grammar (basic), reading comprehension & Microsoft Word 2010 at Job Service. Call 433-1204 for testing. To apply, contact Sidney Job Service for a generic application.

**HANDYMAN**  
Handyman wanted for wide range of maintenance and repair. 406-489-5195.

**CARRIERS NEEDED**  
Need extra cash or want to get some exercise while

getting paid? We have carrier routes available in several parts of Sidney. 406-433-3306 or fill out application at The Roundup, 111 W. Main, Sidney.

**FOR RENT APARTMENT**  
2 bedroom, 1 bath, pet friendly, \$625. 406-489-5195.

**FOR SALE IRRIGATION PUMP; TOP SOIL**  
Irrigation pump, 50 Hp, JD motor #40390F001, Cornell pump model #4RBF16 Rockford hand clutch, exhaust primer, Murphy switches, crankshaft pulley and mounting bracket for generator. Used to run remote pivot system, 100 gallon fuel tank all mounted on pull trailer. Excellent unit, \$5,000. Topsoil, rock and weed free, \$15 per yard, loaded. 701-744-5729.

**MISC. FOR SALE**  
Amana cooktop range, \$300; Whirlpool refrigerator \$375; 3 display signs; baby crib, full-size w/mattress, \$35; 3 way-mirror medicine cabinet, like new, \$300.

4-drawer filing cabinet, \$45. 406-489-1945, noon-6 p.m.

**SERVICES**  
**ROUND OR RECTANGULAR TABLES & CHAIRS FOR RENT**  
Parties, weddings, get-togethers. Ultimate Showdown Assoc. Located at Hefty Seed Co. South of Sidney, has tables & chairs for rent. Will deliver. Call 406-488-4338.

**DO YOU NEED HELP WITH HOUSEWORK IN THE SIDNEY AREA?**  
Call 406-973-2498! Will dust, vacuum, mop, clean bathrooms, fold laundry, wash dishes. Years of experience.

**WANTED**  
**WANTED TO BUY MOTORCYCLES, PICKUP**  
1970s era Yamaha DT 175cc Enduro motorcycle; Yamaha 500cc TT or XT dirt bike; K2 900cc or 1000cc Kawasaki K2 road bike. Older, stickshift GM pickup, minor repairs ok. Wanted to teach youngsters how to drive, over flavors considered. Must be resonable, 701-744-5729.

**NOW SELLING NEW AND USED TIRES**  
offering light mechanics as well

**MAGNUM MOTORS**  
Williston, ND • 701-572-0114 • 770-6375

## The Roundup Help Wanted

Freelance position for reporter to take photos & write stories at a weekly regional publication. Must have computer skills, valid driver's license & reliable automobile. Short distance travel may be necessary. Required testing for: spelling & grammar (basic), reading comprehension & Microsoft Word 2010 at Job Service. For testing & generic application, contact Sidney Job Service at 406-433-1204.



**NEW SY 611CL2**  
High Yield and protein Manage resistant grasses with 2 gene herb tolerance Soren pedigree

**SY Murdock**  
Excellent Yield with Good Protein Strong Straw

**ND Riveland Durum**  
High Yields and Test Weight Medium maturity

**SY McCloud**  
Very High protein and Yield, Ex TW and strong disease package

**SY Longmire**  
Solid Stem built to Yield with very good protein potential, good overall disease package

**Lanning**  
Higher Protein Vida Replacement

**Brennan**  
Balanced With High Yield & Protein Last available certified as it has been discontinued

**Hyline Yellow Pea**  
High Yielding Variety with Good Height & Standability

**Richlea Lentils**

**SKOV SEED**  
Randy Skov | Fairview, MT  
406-747-5217 Home  
406-489-0165 Cell

*Call Today!*

\*CLEARFIELD and beyond are trademarks of BASF. ©2002 BASF Corporation. All rights reserved. Always read and follow label directions.

**AgriPro**

PVPA 1994—Unauthorized propagation prohibited. Plant variety protection granted or applied for Syngenta varieties.

## Inspired to CARE



### Join our team! Job Opportunities

Cancer Care Infusion Registered Nurse	Nursing Director of Nursing Acute Care
Clinic LPN/RN Same Day Clinic	Registered Nurse Emergency Room
Dining Services Cook	Registered Nurse or LPN Med/Surg
Emergency Medical Technician	Registered Nurse OB
Environmental Services Extended Care Housekeeper Housekeeper Laundry Aide	Pharmacy Technician – Compounding Specialist
Extended Care Certified Nurse Assistant Engagement Aide Licensed Practical Nurse Registered Nurse	Rehab Services Speech Language Pathologist
Laboratory Laboratory Assistant Medical Technologist (MLS/CLS) or Medical Laboratory Technician (CLT)	Respiratory Services Respiratory Therapist
	Surgery Perioperative RN

**SIDNEY HEALTH CENTER**  
Exceptional Care for Life

For additional information or to apply online, visit our website or contact: Human Resources at (406) 488-2571 [HR@sidneyhealth.org](mailto:HR@sidneyhealth.org) 216 14th Ave SW • Sidney, MT

**BENEFITS:** Health insurance • Generous paid leave • Competitive pension plan • Flexible spending accounts • Voluntary dental, vision, critical illness and accident insurance • Life and AD & D Insurance • Hospital and Fitness facility discounts

Visit Our Website at: [www.sidneyhealth.org](http://www.sidneyhealth.org)

*Seed For Sale*

**DURUM**  
Cert. Joppa, Cert. Lebsack & Cert. Alkabo

**SPRING WHEAT**  
Cert. SY Ingmar, Cert. Bolles & Cert. SY Longmire

**BARLEY**  
Common Haybet (Forage) & Cert. Lavina (forage)

**OATS**  
Common Jury

**FLAX**  
Cert. Hammond

**LENTILS**  
Cert. Green Viceroy's & Cert. Red CDC Maxim CL

**Green Peas**  
Cert. Viper

SOME VARIETIES ARE LIMITED. SUBJECT TO NDSS CERTIFICATION.

**Signalness Farms**  
Larry: 701-770-2500  
Jason: 701-770-0926  
Watford City, ND

**INSTALLED WINDSHIELDS FOR MOST MAKES AND MODELS**

**MAGNUM MOTORS**  
Williston, ND • 701-572-0114 • 701-770-6375

**CASH FOR Mobile Homes**

**1990+ Newer REH Sales**

**970-308-5571**

## NOW HIRING!

**Deli Clerk and Cashier Positions**  
Full Time or Part Time positions  
Wages DOE starting at \$12/hr • Benefits  
Must be available to work a variety of shifts including weekends

**Deli Clerk responsibilities include:**

- preparing and serving all deli items
- slicing meat and cheese
- serving the public
- stocking, rotating and maintaining inventory
- providing outstanding customer service
- assist with prep area cleaning

*Applicant will need to demonstrate the ability to be organized, work independently and with all team members to provide a great atmosphere for both customer and employees, all while maintaining the overall appearance of the dept.*

**Cashier responsibilities include:**

- must be friendly and outgoing
- Outstanding customer service
- Must be able to operate a cash register
- perform all related checkout procedures in a fast, efficient, friendly, and accurate manner

**Apply online at [reynoldsmarket.com/employment](http://reynoldsmarket.com/employment) or pick up an application at the store**

  
**Shops at Fox Run | 404 N Central Ave • Sidney, MT**  
406-433-2305 | [www.ReynoldsMarket.com](http://www.ReynoldsMarket.com)

The Roundup

# AUTO TRADER

**YOUR VEHICLE HERE!**

Give some details about your vehicle. Is it gently used, or basically new?



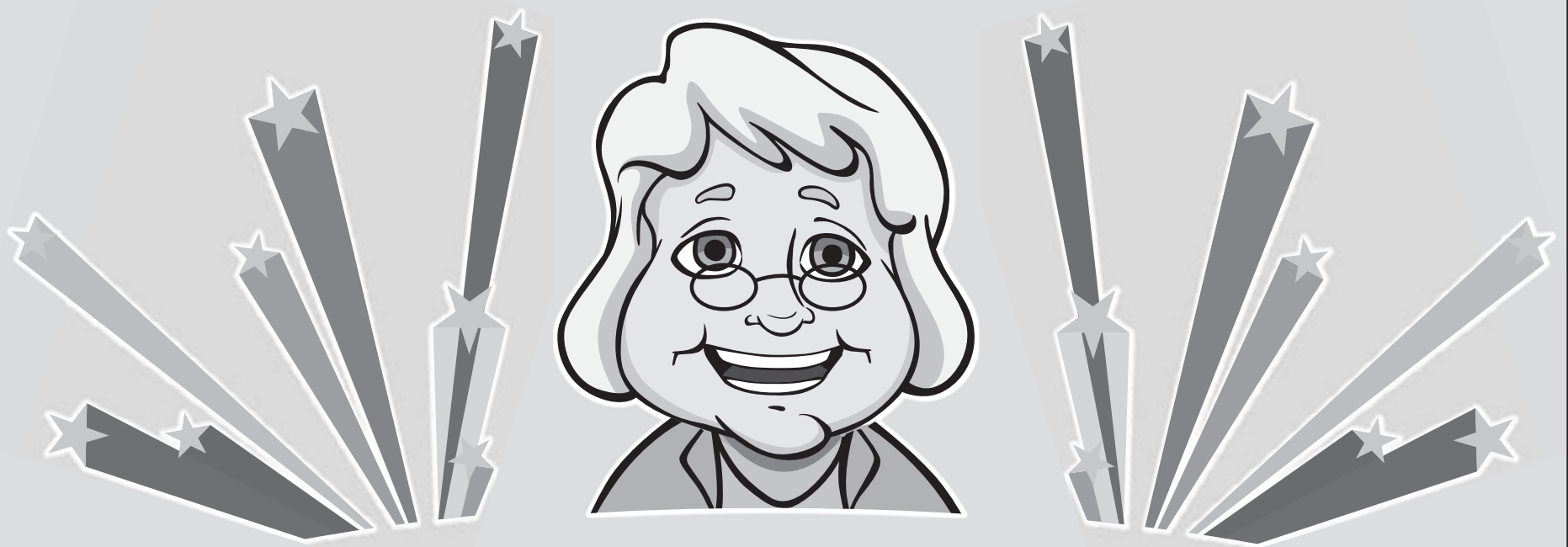
For Info, Call: 123-456-7890

**\$12,345**  
OR BEST OFFER

**ONLY \$17 A WEEK!**

If you run it for two weeks & it doesn't sell, we'll run it for two more weeks **FREE!**  
[classads@esidney.com](mailto:classads@esidney.com) • (406) 433-3306 for details





# RETIREMENT SALE ENDING SOON



## STORES FULL OF OTHER TREASURES!

- Hard Cover & Paperback Books • Antiques • \$ Store
- Readers Digest Condensed • Local Photography • Agate Bags
- Western Bookends • Display Racks & Signs • Silverware Jewelry
- Agate Nuggets • Agate Rings & Necklaces • Belt Buckles & Bolos
- Misc. Chairs • Kay Hamberg Original Art • Dinette Sets

# YELLOWSTONE *Marketplace*



# Ballots Needed By April 16 To Help Pass Montana Oilseed Crop Checkoff

By Anna Dragseth

The Montana Oilseed Advisory Committee is proposing a 0.5% checkoff for canola, camelina, flaxseed, mustard, safflower, soybeans, and sunflower crops.

This checkoff means that growers can voluntarily have 0.5% taken off their sale price when they sell their crop and that half a percent will be used to benefit the overall production of oilseed crops and growers.

If this checkoff is passed, then the Montana Oilseed

Advisory Committee will help advise the Montana Department of Agriculture on how to invest those funds for market development, research, and education.

In order to be passed, the Committee will need to receive several ballots supporting this checkoff by Friday, April 16.

“The Oilseed Committee can take those funds and decide how to spend them to support oilseed production in Montana. For example, we can choose to send them

to research projects that would help the growers better understand how to grow the crops, send them to market development projects to help find local processing options or help start local processing options to encourage different uses for the crops, and then also education to make sure that whatever we’re doing is getting back to the producers,” said Jeannie Rude, PRO Co-op Ag Center agronomist and MT Oilseed Committee member.

The committee decided to include canola, camelina, flaxseed, mustard, safflower, soybeans, and sunflower crops because they are the seven largest acreage oilseed crops in the state.

According to the National Agricultural Statistics Service, Montana oil crops added over \$54 million in value to the U.S. economy in 2019 and Montana ranks second in the nation for production of canola, flaxseed, and safflower.

Rude explained that the crops included in this checkoff are a broad group because they represent both dryland and irrigated growers. She said, “Montana growers are typically involved in more than one of these crops. If a grower is interested in oilseeds, they are probably producing more than one of these, and so it kind of made sense to lump these seven crops together rather than pursuing seven different checkoffs.”

Rude believes that checkoffs provide an immense number of benefits to producers. She said, “You have to look at other checkoffs just to see how valuable they are to growers. Forty four % of the wheat and barley checkoff goes into research and 28% of it goes to market development. The research of the wheat and barley checkoff goes into everything from variety trials to how to fertilize wheat/barley crops to get better yields. Montana varieties that are developed in Montana by MSU scientists are funded by the wheat barley checkoff.”

Rude is involved with the oilseed checkoff because she sees the benefit of other crops that have checkoffs and believes that there are opportunities with the oilseed crops both in research and market development. She said, “If growers believe in the role of the checkoff, but are pretty busy getting ready to seed, then I can’t argue much with that, but we really need them to mail the ballots back if they support this checkoff.”

# KIDS EARN \$\$\$

## JOIN THE ROUNDUP CARRIER TEAM

# \$100

**SIGNING BONUS!**

(Distributed over a 5 month period)

## PLUS COLD WEATHER BONUS DURING THE WINTER MONTHS & PERIODIC RAISES!



# The Roundup

111 West Main • Sidney, MT | 406-433-3306

# Roundup

## WEB.COM



MOBILE FRIENDLY



# NOW Inc. Completes Flex Flow Acquisition

HOUSTON--(BUSINESS WIRE)--NOW Inc. (NYSE: DNOW) announced the closing of its acquisition from GR Energy Services, a portfolio company of Pine Brook, of substantially all of the assets used in connection with its Flex Flow business, predominantly relating to the rental, sale and service of surface mounted and trailer mounted horizontal pumps, including jet pump systems.

**Transaction Highlights:**

- Flex Flow significantly expands DistributionNOW's existing product offering with the addition of its rental product solution, comprising an industry leading fleet of 240 trailer-mounted horizontal pumping ("H-pump") units

- The combined geographical footprint will enhance DistributionNOW's rapid asset deployment, service and customer contact in the midstream market across the Permian, Scoop-Stack, Haynesville and Bakken plays and Canada's Montney region
- Flex Flow's team of highly skilled H-pump service experts complement DistributionNOW's experienced pump service technicians, further providing customers with complete pumping solutions, allowing broader purchase or lease investment choices
- The transaction has been structured to address current market conditions with initial consideration of \$90 million in cash and additional cash contingent con-

sideration if certain profitability thresholds are achieved during the one-year period following the closing of the transaction

Flex Flow is the leading provider of H-pump solutions for fluid movement applications. Flex Flow has earned a strong reputation on H-pump expertise throughout the lifecycle of the application, through its suite of rental, permanent installation, service and support offerings. Jeff Wilhelm, senior vice president overseeing Flex Flow, will join DistributionNOW and continue his role leading the business.

Peter Goode, GR Energy Services co-founder and chairman, said "I thank the management and staff of



Flex Flow for their contribution to the growth of the GR Energy Services business over the past five years. I wish them all the best in the next chapter of the evolution of the Flex Flow business. I am confident that the expanded opportunities available to them at DistributionNOW will enable them

to continue to build their business while providing them with expanded career opportunities.”

Toby Eoff, NOW Inc. president - Process Solutions, added, “I am very excited about the value we will be able to offer our customers, from expanded application options to more service offerings, as we join together two best in class, highly trained and technical service organizations. It is my belief that the combination of these two organizations, with a shared focus on the customer being priority one and investing in and supporting our employees, will create greater value for our customers and elevate DistributionNOW into the leading pump supplier of choice. We are happy to welcome

the Flex Flow employees to the DistributionNOW family.”

David Cherechinsky, NOW Inc. president and CEO, commented, “This acquisition meets the criteria we have set for inorganic investment: it bolsters and further differentiates DistributionNOW in non-commoditized customer solutions, strengthens and broadens Process Solutions in the fluid handling space, enhances our offering in the midstream markets, and provides enhanced gross margins and EBITDA flow-through dynamics. I also believe the Flex Flow business will benefit from our DigitalNOW® innovation investments. I am excited to introduce the customer-enticing complementary benefits this new venture provides.”

Count on **Tractor & Equipment Co. and T&E The Cat Rental Store**, for all your equipment buying and rental needs. From concrete saws to heavy construction equipment, we offer products from Cat® and other leading brands to meet most jobsite needs.

Lindsay Smith  
406-696-0714

**T & E** 

## We Are Your Oilfield Supply Headquarters!



- Down Hole Sucker Rod Pumps
- Tubing Anchors • Gates
- Hydraulic Hoses & Belts
- Balon Ball Valves • Line Pipe • Tubing
- Fittings • Norris Sucker Rods

**Stanley, ND**  
701-628-8706  
**Sidney, MT**  
406-488-8706 • rpands@midrivers.com

*Customer Service is Our #1 Priority*

# Border

STEEL & RECYCLING, INC.

*Farm & Ranch, Oil Field & Construction Materials, Fencing Supplies, New Steel, Pipe, Aluminum & Stainless*

Sidney: 35002 CR 123 • 406-433-7737  
Glendive: 2703 W. Towne St. • 406-377-4398  
Plentywood: Hwy 16 East • 406-765-2624

Williston: 4705 W. Front St. • 701-572-5493  
Miles City: 12 Peggy Lane • 406-874-7428



# UINTAH

**SURVEYING • ENGINEERING • DRAFTING**

104 2nd Ave SW, Suite 300 • Sidney, MT  
406-433-9650 | www.intahgroup.com

# HURLEY'S

## OILFIELD SERVICES

- Porta Potties • Potable Water
- Loaders • Communications • Backhoe
- Trucking • Skid Houses

**Dispatch: 701-844-1234 | Fairview, MT**



# Legal & Financial Planning For Alzheimer's – A Free April Webinar

Today, 22,000 Montanans are among more than 6 million people in the United States living with Alzheimer's disease. By 2050, if no cure is found, that nationwide total will approach 13 million. Caring for those loved ones day-to-day is one challenge. Preparing for the potentially staggering costs is yet another.

Financial planners estimate that the average cost of a single year in a nursing home ranges from \$70,000 - \$100,000. Stays can range from several months up to 10 years or more. Unfortunately, the average working-age American's retirement savings is less than \$100,000.

The Alzheimer's Association is helping families anticipate and prepare for both the legal and financial challenges that accompany a diagnosis of Alzheimer's or other dementia with a free webinar on Wednesday, April 28, 10-11:30 a.m.

"Legal and Financial Planning for Alzheimer's" is an interactive program where participants learn about important legal and financial issues to consider, how to put plans in place, and how to access legal and financial resources near them.

Legal and Financial Planning for Alzheimer's is one in a series of live webinars offered at no charge during the month of April. The full schedule for the month includes:

(En Espanol) Conozca las 10 Senales de Alzheimer's: Thursday, April 8, 10-11 a.m.

• Understanding and Responding to Dementia-related Behavior (Behavior is a powerful form of communication and one of the primary ways that people with dementia communicate their needs and feelings as the ability to use language declines. But these behaviors can be challenging for caregivers. Join us to learn how to decode behavioral messages and learn strategies to intervene with some of the most common behavioral challenges.) Thursday, April 15, 10-11:30 a.m.

Effective Communication Strategies (This workshop teaches caregivers to decode verbal and behavioral communication from someone with Alzheimer's and other dementias. Develop strategies for having meaningful connection with people in differing stages of dementia.) Tuesday, April 13, 2-3:30 p.m. and Wednesday, April 21, 7-8:30 p.m.

• Advancing the Science: Alzheimer's and De-

mentia Research (An overview of Alzheimer's disease science and the latest advances in research to find a prevention, treatment and cure.) – Wednesday, April 14, 2-3 p.m.

• Healthy Living for Your Brain and Body: Tips from the Latest Research (We've always known that the health of the brain and body are linked, but now science is able to provide insights into how we can optimize our physical and cognitive health as we age. Learn about research in the areas of diet and nutrition, exercise, cognitive activity and social engagement, and use hands-on tools to help you incorporate these recommendations into a plan for healthy aging.) Tuesday, April 20, 10-11 a.m.

• COVID-19 and Caregiving – (Caring for someone living with dementia during the COVID-19 pandemic adds unique challenges for caregivers. This program provides simple tips caregivers can put in place whether the person living with dementia lives at home, in a residential facility, or care providers are coming into the home.) Monday, April 26, 10-11 a.m.

• Legal and Financial Planning for Alzheimer's (An interactive program where you'll learn about important legal and financial issues to consider, how to put plans in place, and how to access legal and financial resources near you.) Wednesday, April 28, 10-11:30 a.m.

• Living with Alzheimer's: for Care Partners – Early Stage – Part 1 – (In the early stage of Alzheimer's disease, families face new questions as they adjust. What does the diagnosis mean? What kinds of plans

need to be made? What resources are available to help? This 3-part program provides practical answers to the questions that arise in the early stage. Hear from those directly affected and learn what you can do to cope with the changes that come with an early-stage diagnosis.) Monday, April 12, 6-7:30 p.m.

• Living with Alzheimer's: for Care Partners – Early Stage – Part 2 – (In the early stage of Alzheimer's disease, families face new questions as they adjust. What does the diagnosis mean? What kinds of plans need to be made? What resources are available to help? This 3-part program provides practical answers to the questions that arise in the early stage. Hear from those directly affected and learn what you can do to cope with the changes that come with an early-stage diagnosis.) Monday, April 19, 6-7:30 p.m.

• Living with Alzheimer's: for Care Partners – Early Stage – Part 3 – (In the early stage of Alzheimer's disease, families face new questions as they adjust. What does the diagnosis mean? What kinds of plans need to be made? What resources are available to help? This 3-part program provides practical answers to the questions that arise in the early stage. Hear from those directly affected and learn what you can do to cope with the changes that come with an early-stage diagnosis.) Monday, April 26, 6-7:30 p.m.

• Living with Alzheimer's: for Caregivers – Middle Stage – Part 1 – (In the middle stage of Alzheimer's disease, those who were care partners now become

hands-on caregivers. Join us for this 3-part series and hear caregivers and professionals discuss helpful strategies to provide safe, effective and comfortable care in the middle stage of Alzheimer's.) Thursday, April 15, 2-3:30 p.m.

• Living with Alzheimer's: for Caregivers – Middle Stage – Part 2 – (In the middle stage of Alzheimer's disease, those who were care partners now become hands-on caregivers. Join us for this 3-part series and hear caregivers and professionals discuss helpful strategies to provide safe, effective and comfortable care in the middle stage of Alzheimer's.) Thursday, April 22, 2-3:30 p.m.

• Living with Alzheimer's: for Caregivers – Middle Stage – Part 3 – (In the middle stage of Alzheimer's disease, those who were care partners now become hands-on caregivers. Join us for this 3-part series and hear caregivers and professionals discuss helpful strategies to provide safe, effective and comfortable care in the middle stage of Alzheimer's.) Thursday, April 29, 2-3:30 p.m.

Like all programs and services of the Alzheimer's Association, the webinars are offered at no charge, but registration is required. To register, call the free Alzheimer's Association Helpline at 800-272-3900. To learn more about Alzheimer's Association programs and services, go to www.alz.org.

~Life  
 ~Health  
 ~Medicare Supplement  
 ~Medicare Part D  
 ~Group Health  
 ~Vision  
 ~Dental  
 ~Long Term Care

202 3rd Ave NW  
 Sidney MT 59270  
 phone 406-488-4366  
 fax 406-630-4433

UNION GATEWAY AGENCY  
 Your Insurance Team  
 Independently  
 Representing:

Locally owned and operated in Watford City, ND  
 Serving North Dakota and Montana

Steel sales! No piece too big or too small!  
 Field and shop welding!  
 Special prices for our ranchers and farmers!  
 Material forming, rolling, shearing and machine work

We stock...

- Steel - plate, angle, tubes, flat bar, pipe, beams and more
- Aluminum – plate, channel, angle, round bar and more
- Piano hinges, bullet hinges, teardrop hinges, all thread, spring latches, D-rings...
- AND MUCH MORE!

In God We Trust

Office: 701-842-2759 • 24/7: 701-690-7571  
 1504 11th Ave SE • Watford City, ND | PO Box 522

OIL AND FILTER SALE

Save  
 75¢  
 gal  
 Drums & Cases

Check out all our low prices on oil & filters!  
 Hurry In... Save now during our spring oil sale!

SPECIAL PRICING ON ALL OILS

501 6th Ave SE  
 5am - 9pm Daily • 701-444-3639

JULIAN & LLOYD NYGAARD  
 RETIREMENT FARM  
 AUCTION

Starts at 11 am CDST  
 WEDNESDAY,  
 April 21, 2021  
 RURAL CROSBY, ND

Location: 5 miles East of Crosby on Hwy 5, 5 miles S on County 17, 1 mile E, 1 mile N/14 miles North of Wildrose on County 17  
 Call Lloyd for Information:  
 701-641-8809

1252C 104th St. NW – Ambrose, ND 58833  
 Phone 701-965-6234 – FAX: 701-965-5234

Not responsible for accidents. Those attending sale do so at their own risk.

WWW.HAUGLANDSACTIONAUCTION.COM

Lunch Served

TRACTORS • VEHICLE AND TRAILERS • FIELD EQUIPMENT  
 HARVEST AND HAYING EQUIPMENT • SHOP TOOLS  
 MISCELLANEOUS ITEMS

VISIT OUR WEBSITE AND FACEBOOK PAGE TO SEE THE FULL LISTING AND ONLINE BIDDING OPTIONS!

DVAuction  
 Broadcasting Real Time Auctions

EXCELLENT SELECTION OF QUALITY PRE-OWNED VEHICLES

Here's Just A Sample:

2007 Ford 1/2 Ton .....\$3,000  
 2003 Honda Pilot .....\$4,500  
 2008 Pontiac Grand Prix .....\$5,000  
 2006 Chevy Impala .....\$4,800  
 2003 Chevy Blazer .....\$3,500

Greg Magrum - Owner      Robert Lindquist - Sales

1820 2nd St W • Williston, ND | 701-572-0114 | Financing Available



### Spring Classes Open For Registration

For details and to register, visit [handyandynursery.com](http://handyandynursery.com) or our Facebook page

April 10 .....Early Bird Veggies  
April 16 .....Fly-Trap Terrarium  
April 24 .....Bonsai Basics  
May 4.....Spring Pots

Early Bird Veggies  
April 10



Monday - Friday: 9am - 5:30pm  
Saturday: 9am - 5pm  
3515 West Front St  
Williston, ND | 701-572-6083

**Handy Andy's Nursery**  
Since 1952

## Williston Fire Department Provides Update On April 3 Fire North Of Williston



Fire north of Williston, taken on April 3 at 4:30 pm CDT, courtesy of Williams County. (Submitted photo)

### SIDNEY, MONTANA REAL ESTATE AUCTION

THURSDAY, APRIL 22, 8AM - 12PM<sup>MST</sup>

100x180 CHIEF BUILDING (BUILDING #1)  
• Front Showroom, approx. 100x50 w/suspended ceiling & 2nd story Mezzanine  
• Parts Room, approx. 30x45 finished area w/ suspended ceiling & O/H Mezzanine for storage  
• Main Shop, approx. 100x100  
• South Bay, approx. 100x30 for heated storage

41x46 HOOP STYLE BUILDING (BUILDING #2)

CONCRETE LOADING DOCK (ITEM #3)  
80x120 CHIEF BUILDING (BUILDING #4)  
• Heated Wash Bay w/full length drain pit & Alkota LP  
• Heated Shop Area, approx. 80x45

12x66 MOBILE HOME ON CONCRETE PAD W/CARPORT & LEAN TO GARAGE (ITEM #5)  
40x160x16 COLD STORAGE SHED (BUILDING #6)

Please Visit [SteffesGroup.com](http://SteffesGroup.com) for a Detailed Buyers Prospectus, Complete Terms, Photos & Details!

**SteffesGroup.com**  
Steffes Group, Inc., 2000 Main Ave East, West Fargo, ND 701.237.9173

For Information, contact our office at 701.237.9173 at Steffes Group, or Scott Steffes, 701.361.0440 (MT RE Broker #16877)

Scott Steffes MT RE Broker #16877. TERMS: 10% down upon signing purchase agreement with balance due at closing in 45 days.

34940 Hwy 23, Sidney, MT 59270



**Submitted by Communications Strategist City of Williston, Caitlin Pallai**

Williston - On Saturday, April 3 the Williston Rural Fire Department was dispatched to a brush fire north of Williston. Following initial efforts to contain this fire, the Williston Rural Fire Department requested mutual aid from the Williston Fire Department (WFD).

WFD responded with three brush trucks and two tender trucks, an apparatus that specializes in the transport of water from a water source to a fire.

While WFD was working one of the fire's flanks, the wind shifted, and the fire rapidly overtook Brush Truck #3. WFD personnel were able to evacuate and were evaluated with no injuries.

Brush Truck #3 is confirmed as a total loss.

In addition to WFD, fire fighters and personnel from Grenora, Wildrose, Alamo, Minot, Fairview, Epping, Ray, Tioga, and Williams County/Williston Emergency Management responded to this brush fire.

As of 8:30 p.m. CT, Sat., April 3, the fire was considered contained and WFD was released. The Williston Rural Fire Department is now performing "mop up," or extinguishing residual fire.

The cause of this brush fire is undetermined at this time. For more information on this story, please contact Division Chief of Operations, Matt Clark, at 701-572-3400 or [mattc@ci.williston.nd.us](mailto:mattc@ci.williston.nd.us).

For more information on the Williston Fire Department, please visit [www.wfdems.com](http://www.wfdems.com) and follow WFD on Facebook (@WillistonFire).

## Governor Gianforte Reduces Barriers To Vaccine Administration

**Submitted by Brooke Stroyke, Office of the Governor**

Helena - Governor Greg Gianforte has issued a directive to reduce barriers to vaccine administration in pharmacies across Montana.

"As we expand vaccine eligibility to all Montanans on April 1, we're focused on reducing barriers Montanans face to get the vaccine and increasing access to it," Governor Gianforte said. "To that end, the directive I issued will make it easier for pharmacies to efficiently administer doses to more Montanans."

The directive authorizes pharmacists to use any health care provider, who is licensed by Montana or another state and who is qualified to administer vaccines under his or her scope of practice, to assist in the administration of COVID-19 vaccines for the duration of the state of emergency.

The directive also temporarily waives a restriction on the number of pharmacy technicians a registered pharmacist may supervise for the purpose of administering the COVID-19 vaccine and conducting associated administrative duties and procedures.

The directive is in effect for the remainder of Montana's state of emergency per Executive Order 2-2021 and can be viewed [https://governor.mt.gov/\\_docs/Directives/PHA-Ratio-Directive-under-2-2021\\_FINAL.pdf](https://governor.mt.gov/_docs/Directives/PHA-Ratio-Directive-under-2-2021_FINAL.pdf).

## FIRESTONE FARM HARD REWARDS AG TIRE REBATES

SAVE INSTANTLY ON TWO OR MORE FIRESTONE AG TIRES

**\$25<sup>00</sup> off** eligible radial implement tires

**\$100<sup>00</sup> off** eligible radial tires

**\$200<sup>00</sup> off** eligible AD<sup>2</sup>™ radial tires

Stop In Or Call Us For Eligible Tires. Offer Good Now Through April 30, 2021.



**Straight Talk \* Honest Service \* Fair Prices**  
1601 S Central • Sidney, MT | 433-3858 • Mon-Fri: 7am - 5:30pm

## IT'S TAX SEASON

Here Are Some Helpful Tips From The IRS:

Drop off taxes

**Getting your refund is more important than ever.**

We're here to help with your tax prep. Safely drop off your docs and go – with or without an appointment.

**H&R BLOCK**

Questions? Call us.

606 S CENTRAL, SIDNEY | CALL 406-433-1818 FAX 406-433-5013 | Filing Deadline Is Now May 17th

Don't count on receiving a refund by a certain date. Some refunds are required to be held until after late February.

Track your refund on IRS.gov or the IRS mobile app, IRS2Go.

All IRS Taxpayer Assistance Centers (TACs) are by appointment only. Don't wait until it's too late to ask questions! However, Most questions can be resolved on the IRS.gov website without visiting a TAC.

There are tools, filing options and other services and resources available on [www.irs.gov](http://www.irs.gov).

**Consumer Alerts on Tax Scams**

Note that the IRS will never:

- Call to demand immediate payment using a specific payment method such as a prepaid debit card, gift card or wire transfer. Generally, the IRS will first mail you a bill if you owe any taxes.
- Threaten to immediately bring in local police or other law-enforcement groups to have you arrested for not paying.
- Demand that you pay taxes without giving you the opportunity to question or appeal the amount they say you owe.
- Ask for credit or debit card numbers over the phone.

Smith, Lange & Halley, P.C.

Certified Public Accountants  
Teresa M. Halley  
Cory W. Wheeler  
Amy A. Bieber

1060 S. Central Ave., Suite 1  
Sidney, MT 59270  
(406) 433-4510  
Fax: (406) 433-4518  
Website: [www.cpasidney.com](http://www.cpasidney.com) • Email: [slhpc@midrivers.com](mailto:slhpc@midrivers.com)

You'll profit from our experience!

## Signup For The Roundup

The Roundup offers free weekly mail delivery in Sidney. If you have a Sidney mailing address and currently do not receive The Roundup newspaper at home (and would like to) sign up today! Stop by 111 West Main, call 406-433-3306 or send your name and address to us at either [classads@esidney.com](mailto:classads@esidney.com) or PO Box 1207, Sidney, MT 59270.



# Pinwheels For Prevention

By Erin Helms

April 1 marks the beginning of child abuse awareness month, a month to recognize the importance of families and communities working together to strengthen families to prevent child abuse and neglect.

In 1983, President Ronald Reagan formally established April as child abuse prevention month and every year since communities across the US have come

together to bring awareness to the child abuse and neglect crisis, and how communities can come together to help families grow their own resiliency. The blue pinwheel has become the symbol of this important month because the pinwheel represents the whimsy and innocence of childhood and the shape of the pinwheel calls to mind the positive cycles of love and support, we can help families create. The pinwheel itself

is also a great reminder of playfulness and joy and the childhoods we all want for the children in our communities.

This month we are issuing a challenge to you, wear blue in support of child abuse prevention share your selfies with #GoBlue #StrongFamilies #SafeKids #GrowingBetterTogether #CAPM, plant or color some pinwheels, find an organization or attend a conference to gain more information on how

you can help like the virtual offering of No More Violence Week <https://www.allianceforyouth.org/no-more-violence-week-great-falls-mt?fbclid=IwAR2QVzS17Af-hpLu8MMdlipSx-6douaZDHD4SH1pKT-Gi1T4bDvcaFp12PVVI> and the Montana Prevent Child Abuse and Neglect Conference <https://dphhs.mt.gov/cfsd/canconference> and most importantly spread the word and share the importance of

this month.

You can find more information about pinwheels for prevention at <https://preventionchildabuse.org/> and <https://familyconnectionsmt.org/>

Erin Helms



## MSU Extension, MSU Alumni Foundation To Offer Estate/Legacy Planning Webinars

MSU News Service

Bozeman - Montana State University Extension, in partnership with the MSU Alumni Foundation, will offer a five-part webinar series on estate and legacy planning. Thoughtful Thursdays will run from 10-11 a.m. beginning April 15-May 15.

In the first session, viewers will learn how to pass property without probate while saving more money for their heirs. The Montana Legislature has provided payable-on-death designations, transfer-on-death registrations and transfer-on-death deeds, and according to Emily Standley, MSU Extension Fergus/Petroleum County agent, viewers will understand how these designations override provisions written in wills.

The second session will discuss how traditional and Roth IRAs can be useful estate planning tools. Participants will discover how qualified charitable distributions from a traditional IRA can support your favorite charity or nonprofit while reducing your tax liability at the state and federal levels, said Kevin Brown, associate vice president of development for estate, trust and gift planning for the MSU

Alumni Foundation.

The series' third session will touch on the Montana Endowment Tax Credit, which MSU Extension family economics specialist Marsha Goetting calls a major benefit for Montana taxpayers and Montana charities.

"This credit could provide a credit up to \$10,000 annually on your Montana income tax," she added. "This is a win-win for Montana taxpayers and Montana charities and nonprofits. Montana is one of just a few states to offer such a credit."

The fourth session will cover how charitable gift annuities are different from commercial annuities and how they can provide income, support a person's favorite charities or nonprofits and reduce state and federal income taxes.

The final session will explore how a charitable remainder trust could be a valuable tool in any estate plan.

Registration is required for the webinars. For more information and to register, visit <https://www.montana.edu/estateplanning/thoughtfulthursdays/>.

### LARRY & NANCY JOHNSON RETIREMENT FARM AUCTION

**Starts at 11 am CDST  
FRIDAY,  
April 23, 2021  
ALAMO, ND**

**Location:** 27 miles N of Williston on Hwy 85 to 77 SE & 1 1/2 mile E or 2 1/2 miles S of 29 mile corner at Jct of 50 & 85 then to 77 SE

**Call Larry for Information:**  
701-641-2146

**Lunch Served**

**TRACTORS • FIELD EQUIPMENT • HARVEST EQUIPMENT  
HAYING & LIVESTOCK EQUIPMENT • VEHICLES & TRAILERS  
MISCELLANEOUS ITEMS**

VISIT OUR WEBSITE AND FACEBOOK PAGE TO SEE THE FULL LISTING AND ONLINE BIDDING OPTIONS!

**DVAuction**  
Broadcasting Real-Time Auctions

• Butch Haugland, #211 Auctioneer  
• Drew Haugland, #730 Auctioneer  
• Amber Haugland, #693 Auctioneer  
• Diane Haugland, #236 Clerk

12520 104th St. NW -- Ambrose, ND 58833  
Phone 701-965-6234 -- FAX: 701-965-5234

Not responsible for accidents. Those attending sale do so at their own risk.

[WWW.HAUGLANDSACTIONAUCTION.COM](http://WWW.HAUGLANDSACTIONAUCTION.COM)

# SPRING REBATES

## On New Vehicles

**2020 FORD EDGE SEL  
#3963, Desert Gold**

**\$5,000 REBATES**

---

**2020 FORD EXPEDITION  
#3987, Magnetic  
OAC Ford Credit, Trade-In Required**

**\$5,000 REBATES**

---

**2021 FORD RANGER  
#3994, Carbonized Grey,  
Lariat**

**\$2,250 REBATES**

**Eagle Country Ford**

215 East Main • Sidney, MT | 433-1810 or 1-800-482-1810 | [eaglecountryfordsales.com](http://eaglecountryfordsales.com)

See dealer for details  
**"Experience the Eagle Country Difference!"**

# THE BUSINESS ROUNDUP

Reach 26,500 Readers in the Entire MonDak Region

Call: 406-433-3306 or email: [info@roundupweb.com](mailto:info@roundupweb.com)

visit [www.roundupweb.com/directory](http://www.roundupweb.com/directory) for direct links to company websites & locations

**\$25<sup>00</sup> WK**

**NICK JONES REAL ESTATE**

TRUCK ROUTE SOUTH, SIDNEY  
OR CONTACT ONE OF OUR AGENTS:

Justin Jones 406-480-9525  
Jerrian Franzen 406-478-3773  
Dennis Wick 406-480-1550

[www.NICKJONESRE.COM](http://www.NICKJONESRE.COM)

**Signs OF SIDNEY**

224 6th St. SW, Sidney • 406-433-2476 • [signsofsidney@midrivers.com](mailto:signsofsidney@midrivers.com)

**Signs • Banners  
Vehicle Lettering  
Vinyl Letters  
Location Signs  
Decals  
with High Tack Option**

• Gift Bouquets • Tuxedos • Balloons  
• Fresh Made Flavored Popcorn  
• Holiday & Solid Tableware

**PARTY CENTRAL & MAIN STREET POPCORN**

105 E Main • Sidney | 406-433-4386

**HIGH CALIBER SPORTS & ATHLETICS**

**One Location To Serve You Better!**

440 N Central Ave • Sidney, MT  
Shops at Fox Run | 406-433-1800  
Mon-Sat: 9am - 6pm • Sun: 10am - 4pm  
[www.highcalibersportsinc.com](http://www.highcalibersportsinc.com)

Network • Automation • Smart Home • AV Solutions

**ELECTRICLAND**

225 2nd Ave NE • Sidney, MT | Mon - Fri: 9am - 5pm | 406-433-4370

**DOORBUSTIN**

Portables & Septic Service, LLC

Office: (406) 433-7586  
Fax: (406) 433-7596  
Service: (406) 489-0915

• Portable Toilet Rentals  
• Septic Pumping & Installation  
• Jetting Frozen Sewer Lines  
• Snake Jobs  
• Camera-Locate Sewer Lines  
• Pipe Burst Sewer Lines (eliminates digging up entire yard)  
• Troubleshooting

Blaine Rogers - Owner | PO Box 1003 | 34980 Hwy 23 • Sidney, MT

**Sidney LUMBER**

Mon-Fri: 8am - 3pm  
1420 5th St SW • Sidney, MT  
406-433-7767 • By Appt: 406-489-1880

**WE WILL NOW CONTRACT YOUR ENTIRE JOB!**

**YOUR COMPANY HERE**

**Border**

STEEL & RECYCLING, INC.

Sidney: 35002 CR 123 • 406-433-7737  
Glendive: 2703 W. Towne St. • 406-377-4398  
Plentywood: Hwy 16 East • 406-765-2624

Customer Service is Our #1 Priority

Farm & Ranch, Oil Field & Construction Materials, Fencing Supplies, New Steel, Pipe, Aluminum & Stainless

Williston: 13896 W. Front St. • 701-572-5493  
Miles City: 12 Peggy Lane • 406-874-7428



# 2Part Equipment Retirement AUCTION

Visit [SteffesGroup.com](http://SteffesGroup.com) for Complete Lot Listings, Photos & Details!

PREVIEW: April 1 – April 21, 8AM – 5PM MST | **LOADOUT:** April 21 – April 30, 8AM – 5PM MST

AUCTIONEER'S NOTE: Registration, terms, & details at [SteffesGroup.com](http://SteffesGroup.com)

📍 34940 Hwy 23, Sidney, MT 59270

## Live On-Site Equipment

- Wheel Loader & Attachments
- Telehandlers
- Tractor Loader Backhoes
- Track Skid Steer Loaders
- Wheel Skid Steer Loaders
- Skid Steer Attachments
- Mini Track Loader & Attachment
- Mini Excavators
- Mini Excavator Attachments
- Scissor Lifts
- Boom Lifts
- Manlifts
- Trenchers
- Trench Compactors
- Semi Tractors
- Dump Trucks
- Service Pickups
- Pickups
- New & Used Tandem Axle Equipment & Car Trailers
- New & Used Single Axle Equipment Trailers
- New & Used Tilt Bed Trailers
- New Deckover Trailers
- Roll-Off Trailer & Bins
- Dump Trailers
- New & Used Enclosed Trailers
- Water Trailer
- Portable Generators
- Light Towers
- Portable Air Compressors
- Heaters
- MFWF Tractor & Loader
- Landscaping & Other Equipment
- Man Baskets
- Fuel Trailer & Fuel Tanks

## Timed Online Equipment

- New Flatbed Truck Bodies
- Cement Equipment
- Cement Forms & Supplies
- Landscaping Equipment
- Support Equipment
- Shop Equipment & Tools
- Consumables, Support Items & Parts

## WEDNESDAY, APRIL 21

**Live On-Site Equipment Starting at 10AM<sup>MST</sup>**

**Timed Online Equipment Closing at 7PM<sup>MST</sup>**

# SteffesGroup.com

Steffes Group, Inc., 2000 Main Ave East, West Fargo, ND | 701.237.9173

## RENTAL SERVICES RETIREMENT

**Mike Weeks, 406.433.1888 or 406.478.4698**

or Terry Moe at Steffes Group, 701.237.9173 or 701.580.2426

All items sold as is where is. Payment of cash or check must be made sale day before removal of items. Statements made auction day take precedence over all advertising. \$35 documentation fee applies to all titled vehicles. Titles will be mailed. Canadian buyers need a bank letter of credit to facilitate border transfer. Scott Steffes ND81, MT-RRE-BRO-LIC-16877

## Foundation For Community Care Receives Donation From Stockman Bank And Their Employees

**Submitted by Jennifer Boyer, Operations Coordinator**


Sidney - The Foundation for Community Care, a non-profit organization focused on ensuring access to excellent, lifelong healthcare services for our community, received a generous gift from the employees at Stockman Bank, Sidney and in turn inspired a matching gift by Stockman Bank. They chose to impact the Sidney Health Center Cancer Care as well as the Bridge Fund, which grants assistance to qualified patients and helps with expenses associated with required travel for specialized care outside of Sidney Health Center.

"Our community is blessed to have amazing care right here close to home, and the routine of cancer care makes it that much more imperative. The Foundation has received feedback stating that it is so appreciated by patients and their families. Stockman Bank and their employees show that they are dedicated to be invested in this community," stated Jennifer Bover, Foundation Operations Coordinator.

Thank you to Stockman Bank and their employees for supporting local healthcare with their charitable contributions! For more information about the Foundation for Community Care, or to find out how you can help impact your community, please go to our website at [www.foundationforcommunitycare.org](http://www.foundationforcommunitycare.org), stop by our office at 221 2nd St. NW, Sidney or call 406-488-CARE (488-2273).



**On Tuesday, March 30, Stockman Bank employees donated \$800 to the Foundation for Community Care Cancer Center and Stockman Bank matched the donation. Pictured are President of Stockman Bank, Wade Whiteman, Melissa Boyer, Jennifer Boyer and Jaena Cotter. (Photo submitted by Morgan Taylor)**



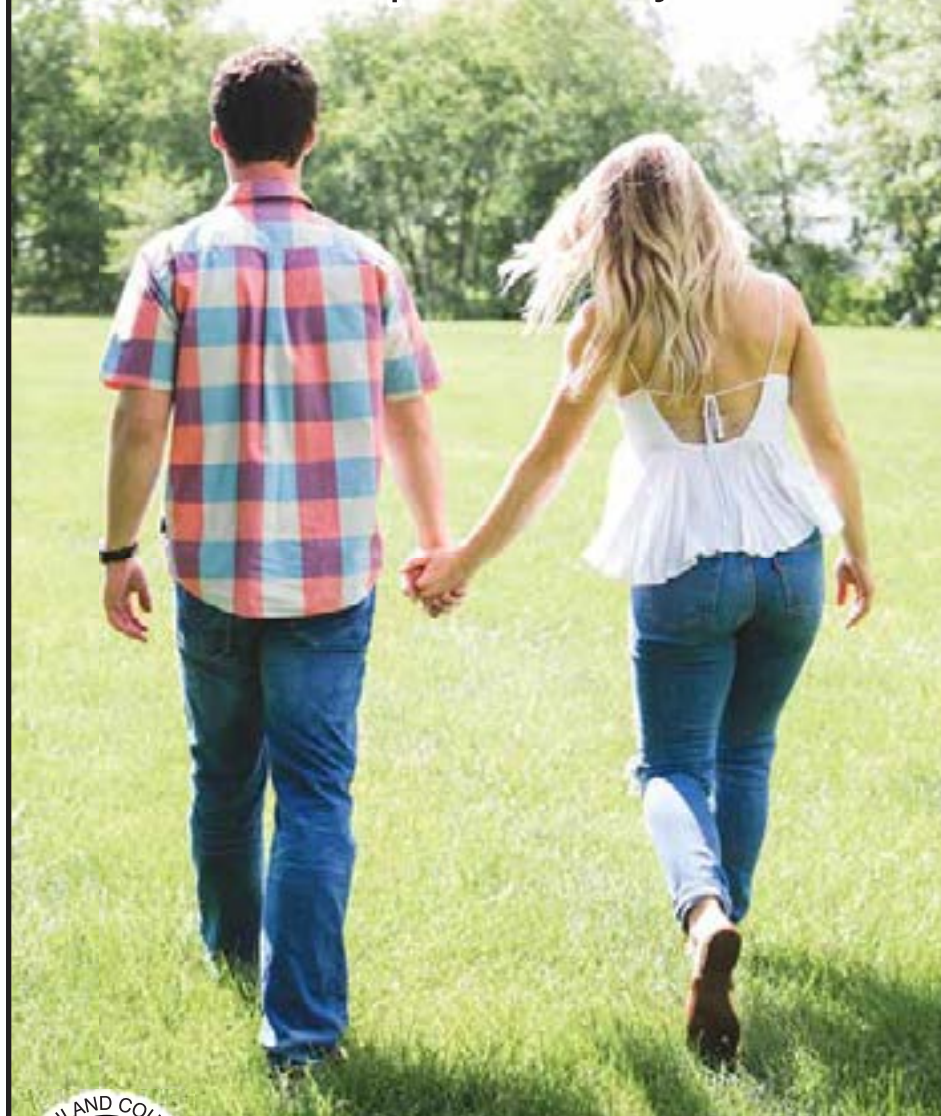
# Class C Track Action

**Savage's Brooke Reuter takes off in the 100-meter dash during the Glasgow Invitational on Thursday, April 1. The freshman finished first in the 100, second in the 400 and third in the 200 at the meet. (Submitted photo)**



***AFFORDABLE SERVICES,  
QUALITY CARE, PRIVACY  
AND CONFIDENTIALITY***

- STD & HIV Testing
- Pregnancy Testing • Birth Control
- Emergency Contraception
- Condoms • Pap Tests • Physical Exams



## Richland County Family Planning

**Call 406-433-2207 For An Appointment**  
**Mon & Thurs: 8am - 5pm**  
**1201 W Holly St Suite 1 • Sidney, MT**

# APRIL SHOWERS JACKPOT

**4 Random  
2500pt  
Winners  
Throughout  
The Month!**

## x2 POINTS

TUESDAYS: 6-10PM  
SUNDAYS: ALL DAY

***“Customers are the jewels in our crown”***

**406-433-7222**

**222 S Central Ave • Sidney, MT**

**\*Must be a member of Club Royale Casino Player's Club to participate in all promotions and present to win. Ask attendant for details regarding all promotions.**

