

The Roundup

PRSRT STD
U.S.
POSTAGE
PAID
The Roundup
ECRWSS
Postal Customer

Phone (406) 433-3306
Fax (406) 433-4114
E-mail address:
info@roundupweb.com
www.roundupweb.com

Business Office:
Located at 111 West Main
Sidney, MT

Mailing Address:
P.O. Box 1207
Sidney, MT 59270

Wednesday, September 2, 2020

Volume 46 • Number 30

HUNTING

Special Section

See
pages
5A - 7A.

1st Annual Spinnin' Pole Arena Youth Playday Set for Sept. 5

By Anna Dragseth

The 1st annual youth rodeo, Spinnin' Pole Arena Playday, is set to take place on Saturday, Sept. 5 at 10 a.m. This event will take

place at 12481 21st St. NW, Watford City and will feature barrels, poles, flag race, speed race, and dummy roping. The cost is \$5 per event and is open to ages 13

years of age and younger. Awards will be given to the top six contestants in each event and all-around champions (top three in each age group).

This event is sponsored by Watford City area businesses and generous donors including Drakin Oilfield Const., Delta Constructors, McKenzie County Farm

Bureau, Beaver Creek Kids, Wagoner Enterprises, and Denise Matson.

Corps Of Engineers Announces Public Hearing Dates For Keystone XL Pipeline

Omaha, NE - The U.S. Army Corps of Engineers, Omaha District has scheduled public hearings for the purpose of collecting information or evidence which will be considered in evaluating the proposed USACE permit action for the Keystone XL Pipeline.

During the public hearings, interested parties will be afforded the opportunity to present their views, opinions and information on the proposed project.

Hearing dates are scheduled for Sept. 28, 2020, MT; Sept. 29, 2020, SD and Oct. 1, 2020, NE. All three hearings will take place from 4-8 p.m. CST. Due to the COVID-19 pandemic the public hearings will be virtual. Dial-in: 1-888-251-2949 or 215-861-0694; Access Code: 4691237#.

Richland County COVID-19 Update Aug. 29 Active 2 Recovered 54 Deaths 2 Total 58

By Stephanie Ler, RS, MPH, Richland County Health Department Public Information Officer

The Richland County Health Department is announcing additional active cases of COVID-19 in Richland County residents, and the release of two cases from isolation. This brings the total case count to 58. At this time, 54 of the total cases are recovered, and two are active, with two deaths.

Active case updates are as follows:

Case 58: A male in his 20s who is not hospitalized and is isolating at home. The case investigation is ongoing. The individual was symptomatic.

Case 57: A female in her 50s who is not hospitalized and is isolating at home. The case investigation is ongoing. The individual was

named as a contact to a positive case and became symptomatic in quarantine.

Case 56: A male in his 30s who is not hospitalized and is isolating at home. The case investigation is ongoing. The individual was named as a contact to a positive case and was symptomatic.

Case 55: A male in his 60s who is not hospitalized and is isolating at home. The case investigation is complete. The individual was named as a contact to a positive case and became symptomatic in quarantine.

The Health Department continues to monitor up to 30 close contacts daily. The Health Department's investigations show that residents could be doing more to follow COVID-19 preventative recommendations, particularly in regard to not going out when sick, staying

home after being tested, and avoiding large gatherings.

It is imperative that Richland County residents follow instructions from the Health Department and healthcare providers. The following are important reminders:

- If you are not feeling well, particularly including symptoms of a dry cough, fever, shortness of breath, headache, and other cold-like symptoms, stay home until you feel better. This means that you do not go to work, do not attend regular activities, and cancel or postpone appointments.

- If you have been tested for COVID-19 for any reason, including preoperative testing, you must stay home until test results are received. This means that you do not go to work, do not attend regular activities, and cancel or postpone ap-

COVID-19 Case Update for Richland County, MT	
Active Cases	2
Recovered Cases	54
Total Deaths	2
Total Cases in County	58
Contacts Being Monitored	30
Masks are Recommended	
Date: August 29, 2020	
Questions? Call the 24/7 COVID Information Line at 406-433-6947	

pointments. Those who were named, as a contact to a positive case will quarantine for 14 days post-exposure.

- All residents should be practicing social distancing, including limiting the number of close contacts. This means avoiding large gatherings where social

distancing is difficult. Wear a mask as required and when social distancing is difficult.

Together we can slow the spread of COVID-19 in our community. Please do your part so Richland County can recover socially and economically from this pandemic.

The Roundup Donates \$2,000 to Local Contact Tracers

The Roundup donated a portion of the proceeds from their Discovering the MonDak area guide to help with local contact tracing efforts.

Right: Daphne Clark, Upper Missouri District Health Unit Public Information

Officer holds a check for \$1,000 donated from The Roundup last week. Upper Missouri District Health Unit conducts contact tracing for both Williams and McKenzie Counties in North Dakota.



Stephanie Ler, Richland County Health Department Public Information Officer (left) and Brittany Petersen, Richland County Health Department Administrator presented with a check for \$1,000.

Williston Basin International Airport Schedules Active Shooter Training



XWA terminal exterior. (Photo submitted)

Submitted by Caitlin Pallai, Communications Strategist, City of Williston Administration

Williston, ND – The Williston Basin International Airport (XWA), in conjunction with the Williston Police Department and the Transportation Security Administration (TSA), will conduct active shooter training on Wednesday, Sept. 2 at 9:30 a.m.

The exercise will be held within the commercial terminal and will not cause any disruption to normal operations. The facility will be open during the exercise; however, designated areas will be identified.

"This exercise will take place at approximately 9:30 a.m. after the morning commercial flight departs," explained Anthony Dudas, Airport Director. "We ask that the public only attend if they have a need to be within the terminal such as renting a car, etc."

The exercise is scheduled to take one hour.

Notifications describing the exercise will be posted at terminal entrances the day of and announcements will be made over the building's public address system informing passengers and citizens who may be in the terminal that

this is only a drill.

"The purpose of the exercise is to train airport terminal employees for an active shooter event in a safe and controlled environment," added Dudas. "This training is important for airport staff and tenants to get real world experience should an active shooter enter our facility."

Blank ammunition will be fired within the facility to provide realistic gunfire sounds and to provide airport personnel an opportunity to understand situational awareness and potential reactions.

Media is invited to cover the training.

For more information on this story, please contact Anthony Dudas, Airport Director, at 701-875-8594 or anthonyd@ci.williston.nd.us.

For future XWA updates and news, please follow XWA on Facebook (@flywillistonXWA) and Instagram (@xwaairport).

For more information on XWA, please visit www.fly-williston.net.

The Williston Basin International Airport is located at 14127 Jensen Lane, Williston, ND 58801.



Yellowstone Chiropractic Clinic

(406)-433-4757 222 2nd. Ave. SW
1-866-433-4757 Sidney, MT 59270

Dr. Ryan Laqua
Chiropractic Physician &
Certified Medical Examiner

• Sports Injuries • DOT Physicals
• Personal Injuries & Pain Conditions





Pickup And Delivery Dates:

Sidney: Wed Only
Watford City: Tues, Thurs & Sat

We would like to assure all of our customers and staff that Model Drive-In Cleaners is taking all necessary steps recommended by our Drycleaners Association and backed by the Centers for Disease Control during the COVID-19 outbreak. This means all items coming in and going out of Model Drive-In Cleaners will be sanitized.

Our Williston and Watford City stores remain open with hours of operation unchanged, however our Sidney store is temporarily closed.

Serving Watford City At Door 204
204 N Main • 701-842-6441 | Mon-Fri: 7am - 6pm • Sat: 10am - 5pm
Serving Sidney At Big Sky Embroidery And Design
108 E Main • 406-433-7679 | Mon-Fri: 10am - 5pm

DRY CLEANING | SHIRTS & JEANS STARCH | WELDERS STARCH

1129 2nd Ave W • Williston, ND | 701-572-3734 | www.willistondrycleaners.com
Mon-Fri: 8am - 6pm • Sat: 9am - 3pm



UNION GATEWAY AGENCY

Your Insurance Team
Independently
Representing:

~Life
~Health
~Medicare Supplement
~Medicare Part D
~Group Health
~Vision
~Dental
~Long Term Care



Blue Cross Blue Shield
of Montana



Aflac



PacificSource
HEALTH PLANS

202 3rd Ave NW
Sidney MT 59270
phone 406-488-4366
fax 406-630-4433

AREA RECOVERY GROUPS

MONDAYS:
12 p.m. — AA Monday Noon Group, Matthew House Office, 416 2nd St. NW, Sidney, MT.
1 p.m. - 3 p.m. — Grief Recovery Support group, First Lutheran Church music room, Watford City.
6 p.m. — Al-Anon Family Group Meeting, Trinity Lutheran Church Ed. bldg., 214 S. Lincoln Ave., Sidney, MT.
8 p.m. — AA Group, Northern Pump & Compression, Watford City. Call 770-3603 or 770-2675 for directions or ride. Hotline/Info 701-609-8663.


TUESDAYS:
7 p.m. — AA Welcome Home Group, Sunny's Family Restaurant, 102 E. Main St., Sidney, MT, Central Avenue Entrance.
7 p.m. — 24-hour Women's AA group meeting, Northern Pump & Compression, Watford City. Hotline/Info 701-609-8663.

THURSDAYS:
7:30 p.m. — Al-Anon Meeting, Presbyterian Church, 316 4th Ave. NE, Watford City, ND.
8 p.m. — AA Group, Northern Pump & Compression, Watford City. Call 770-3603 or 770-2675 for directions or ride. Hotline/Info 701-609-8663.

FRIDAYS:
6:30 - p.m. - 5 Stones - Faith Based Recovery meeting, Sidney First Church of the Nazarene, 606 9th St. SW, Back door is open.
7 p.m. — AA Welcome Home Group, Sunny's Family Restaurant, 102 E. Main St., Sidney, MT, Central Avenue Entrance.

SATURDAYS:
7 p.m. — AA Welcome Home Group, Sunny's Family Restaurant, 102 E. Main St., Sidney, MT, Central Avenue Entrance.
7 p.m. — AA 24 group meeting, Northern Pump & Compression, Watford City. Hotline/Info 701-609-8663.

SUNDAYS:
7 p.m. — AA Welcome Home Group, Sunny's Family Restaurant, 102 E. Main St., Sidney, MT, Central Avenue Entrance.



STATISTICS

LAKE WATER LEVEL REPORT
Sakakawea

Current Elevation.....1841.0
Last Week's Elev.1841.9
One Year Ago1848.2
Release For Day (C.F.S.)26,000

SIDNEY WEATHER DATA

Source: MSU Eastern Agricultural Research Center

Date	High	Low
Precip.		
August 249249
August 259267
August 269058
August 278853
August 287546
August 298750
August 307350
Total 2020 YTD Precipitation5.972	

OBITUARIES

Chase Raymond Barnedt, 25, Dickinson, ND formerly of Paul, ID

Chase Raymond Barnedt, 25, Dickinson, ND formerly of Paul, ID, died in a traffic accident, Monday, Aug. 24, 2020 near Grassy Butte, ND.

A viewing was scheduled 6-8 p.m., Friday, Aug. 28, 2020 at Church of Jesus Christ of Latter-day Saints, Dickinson, ND.

Funeral services will be in Paul, ID.

Fulkerson-Stevenson Funeral Home, Watford City, ND is caring for the family.

Remembrances, condolences and pictures may be shared with the family at www.fulkersons.com.

Ernest Stordahl, 76 Sidney, MT

Ernest Stordahl, 76, Sidney, MT, passed away Thursday, Aug. 20, 2020, at St. Vincent Healthcare, Billings, MT.

A memorial service was held 10 a.m., Friday, Aug. 28, 2020 at Fulkerson-Stevenson Memorial Chapel, Sidney, MT.

Fulkerson-Stevenson Funeral Home, Sidney, MT is caring for the family.

Remembrances, condolences and pictures may be shared with the family at www.fulkersons.com.

Gordon Berndt, 95 Williston, ND

Gordon Berndt, 95, Williston, ND, passed away Sunday, Aug. 23, 2020 in Billings, MT.

Services are pending, Fulkerson-Stevenson Funeral Home, Sidney, MT is caring for the family.

Remembrances, condolences and pictures may be shared with the family at www.fulkersons.com.

Richland County to Hold Voting at Polling Locations Absentee Voting Registration Still Available

Submitted by Ruth Moore, Elections Clerk, Richland Co. Clerk & Recorder's Office

Richland County will be conducting a polling place election for the General Election on Nov. 3, 2020. We are fortunate to have enough election judges to make this possible.

Change of Polling locations: Sidney Precincts 1, 2, 3, 4, 8, 9, 22 and 23 will vote at the Event Center at the Richland County Fairgrounds. These precincts previously voted at Sidney Assembly of God.

Precinct 12 will vote at the Fairview Senior Center. This precinct previously voted at St Catherine's Church.

All voters on the absentee list will have ballots mailed out on Oct. 9, 2020. Voted absentee ballots may be mailed back or dropped off in person at the Clerk & Recorder's Office, located on the 3rd floor of Courthouse, 201 W. Main Street. Voters can still sign up for absentee ballots. Absentee ballots can be requested up until noon the day prior to the election, however it is strongly recommend voters plan ahead to allow for adequate time for mailing.

Voters may check their voting status online at <https://app.mt.gov/voterinfo/> or contact Clerk & Recorder's Office at 406-433-1708.

The training date for election judges is to be determined.

MDT Launches Poplar Roundabouts Online Exhibit Website Educates Traveling Public on How to Drive Roundabouts

Submitted by Melissa Shannon, Strategies 360

Poplar, MT – This week, the Montana Department of Transportation (MDT) launched an online exhibit online open house to provide the community of Poplar more information about the benefits of roundabouts in Poplar and to educate residents about safely driving them.

"We launched this website because we realize that roundabouts are new to many Montanans who live in rural parts of our state," said Shane Mintz, MDT district administrator. "We want to help folks in Poplar understand why we installed the roundabouts and to alleviate any concerns about safely driving through them."

MDT normally hosts in-person open houses, but due to COVID-19 restrictions they are utilizing online technology to engage with communities around Montana.

MDT is installing roundabouts at intersections throughout Montana with a high history of severe crashes, injuries, and damage to vehicles. Roundabouts are specifically designed to prevent the biggest safety risks to drivers, like high-speed T-bone, head-on, and rear-end crashes that are known to cause traffic deaths.

Roundabouts are proven to reduce fatalities and serious injuries at rural intersections. MDT now has 10 years of before and after data on a rural roundabout in Montana that shows a 100% reduction in fatal crashes, an 87% reduction in injury crashes, and a 26% reduction in total crashes.

The roundabouts in Poplar are targeted at addressing similar intersection-related crashes on US 2 through Poplar, including one fatal crash. MDT also anticipates the Poplar roundabouts to more effectively calm traffic and provide slower and more uniform speeds through town.

The online exhibit is available here: <https://mdt.mt.gov/pubinvolve/poplar/exhibit/>.



SEND US YOUR EVENTS!

THE ROUNDUP: PO Box 1207 • 111 West Main • Sidney, MT
406-433-3306 • Fax: 406-433-4114 • Email: classads@esidney.com

RICHLAND COUNTY

Events in Sidney unless otherwise listed. MT Zone.

Wed., Sept. 2
10 a.m.-4 p.m. - **Richland County Timeline** - Through Oct. 3. - **39th Annual Quilt & Needlework Show** - Through Oct. 3. Viewing is free and open to the public. MonDak Heritage Center, 406-433-3500. Tues.-Fri., 10 a.m.-4 p.m.; Sat., 1-4 p.m. For more information call 406-433-3500, e-mail mdhc@richland.org or visit <https://mondakheritagecenter.org/>.

Sat., Sept. 5
7:30 a.m. - Noon - **Richland County Farmers Market** - Parking lot east of Sidney-Richland County Library on the corner of 2nd St. NW and 2nd Ave. NW. Masks encouraged but not required.

10 a.m.-4 p.m. - **Open Studio Saturdays** - All participants must make an appointment by calling 406-433-3500 or email mdhc@richland.org. Participants limited to 7 maximum at all times. Adults 18+ years old only, must wear a mask. MonDak Heritage Center.

Fri., Sept. 11, 3-7 p.m. & Sat., Sept. 12, 9 a.m.-noon - **E-rase Your E-waste Sidney** - Open to residents throughout the MonDak. Collection site Richland County Shop, 2140 W, next to the fairgrounds. Members of the public should stay in their vehicles if possible and if you get out please wear a mask or maintain social distancing guidelines.

Sat., Sept. 12
9 a.m.-noon - **E-rase Your E-Waste Fairview** - Open to residents throughout the MonDak. Collection site water station on 9th St. Fairview seniors or others needing assistance call Judge Ray Trumpower, 742-5616, Saturday only. Members of the public should stay in their vehicles if possible and if you get out please wear a mask or maintain social distancing guidelines.

Sun., Sept. 13
2 p.m. - **MonDak Heritage Center Annual Meeting** - All members of MDHC and interested members of the public are welcome to attend. Door prizes and refreshments, free to attend. MonDak Heritage Center.

Mon., Sept. 14
6:30-8 p.m. - **Mothers of Preschoolers (MOPS) Meetings** - Open to all Moms with school aged children and younger, including Moms who are expecting. Appetizers, desserts, guest speakers, videos, discussions and crafts. Sidney Lutheran Brethren Church, 1101 Madison Lane. No childcare provided. For more information call Stacy Abar, 406-672-1463.

7 p.m. - **Snacks and Chats** - Anxiety & depression support group for teens ages 13-19. Board games, foosball, ping pong, treats. Not church related. Pella Lutheran Church.

Tues., Sept. 15
12 p.m. - **Job Service Employers Committee Meeting (JSEC)** - Open to everyone. Reynolds Market conference room. Meetings every third Tues. of the month. For more information call Margie 406-433-1204 ext. 204.

Thurs., Sept. 17
11:30 a.m. - **Richland Red Hatters Lunch Meeting** - Sidney Country Club. RSVP by Sept. 15. Call Sylvia, 798-3882 or Margaret, 488-4613.

6-8 p.m. - **Light The Night For Cancer Care** - Luminary lanterns to display at the Foundation; garden solar lights to display in your yard, \$10 per lantern or solar light buy at the Foundation for Community Care or online at foundationforcommunitycare.org. Join virtually on facebook, video chats with cancer patients, musical entertainment, luminary lantern tribute; or drive-through or stop by the Foundation, luminary lantern display or ice cream stand.

Sat., Sept. 19
9 a.m.-12:30 p.m. - **Eastern Montana Out of the Darkness Walk** - Veteran's Memorial Park. Walker check in 9 a.m. No cost. Fundraiser for American Foundation for Suicide Prevention. For more information contact Nick Kallem, 406-478-5546 or email easternmtootd@gmail.com.

Sat., Sept. 26
5 p.m. - **Debbi Hatter Benefit** - Free will offer brisket & pulled pork dinner; silent & live auction, 7 p.m. Sidney Elks Lodge. For more information call Kathy Nicholson, 406-480-9032.

McKENZIE COUNTY

Events in Watford City unless otherwise listed. CT Zone

Thursday - Sept. 3
5:30-7 p.m. - Watford Market - Live music, vendors, Lion's Club \$5 burger plates, demonstrations and more. Kent Pelton Nature Park.

Sat., Sept. 5
10 a.m. - **Spinnin' Pole Arena Playday** - Barrels, poles, flag race, speed race, dummy roping. Entry fees \$5 per event, awards given. 12481 21st St. NW. For more information, 406-853-5779 FMI.

Thurs., Sept. 10, 24 & Oct. 1
3-5 p.m. - **Food Giveaway Only** - First Presbyterian Church, 316 4th Ave. NE.

Fri., Sept. 11
7-9 p.m. - **Pumpkin Garland** - Mary will be teaching how to string together 5 decorated wooden pumpkins. Rough Rider Center. Tickets \$30 via Eventbrite. Hosted by Long X Arts Foundation. Limited spots available.

Sat., Sept. 12
8 a.m.-6 p.m. - **Tobacco Gardens Fall Walleye Classic** - Rules meeting Sept. 11, 6 p.m., Lewis & Clark building. \$100 per 2 person team.

9 a.m. - **Suicide Awareness Run/Walk** - Starts in the parking lot of Stonehome Brewing Co. Routes will be mapped out for 5K, 10K and half marathon. Donations will go to the National Alliance of Mental Illness.

Tues., Sept. 15
2-4 p.m. - McKenzie Co. Food Pantry - First Lutheran Church, 212 2nd St. NW.

WILLIAMS COUNTY

Events in Williston unless otherwise listed. CT Zone.

Saturdays, Sept. 5-Oct. 10
9 a.m.-noon - **Main Street Williston Market** - Vendors will be selling homemade and homegrown goods and food. Sponsor activity, food truck and music each week. Main street between 1st and 2nd Sts., and the Hedderich's lot. Based on COVID-19 regulations please respect social distancing at the market.

Thurs., Sept. 10
5-8 p.m. - **September Art & Wine Walk** - Visit local businesses, browse unique original artwork and enjoy a variety of wines and light appetizers in downtown Williston. \$40 presale ticket; \$50 ticket at the door. Tickets available at Cooks on Main and Castle Framing. Must be 21+ to attend. For more information call 701-580-9343 or visit the event Facebook page.

Sat., Sept. 12 & Sun., Sept. 13
9 a.m.-5 p.m. - **3rd Annual Northern Plains Military Show** - Buy, sell, trade display. Fairgrounds multipurpose building, 519 53rd St. E. \$5 admission; students, military, veterans, free with ID; dealer tables, \$10 each. For more information and table reservations contact Ben, 701-770-8143, lassey@restel.com or Facebook [northernplainsmilitaryshow](https://www.facebook.com/northernplainsmilitaryshow).

Sat., Sept. 19
Art Fest & Band Day 2020 - Harmon Park. Browse art, crafts, product and food booths, bid in the live action.

Sat., Sept. 19 & Sun., Sept. 20
7 p.m. - **Williston Basin Speedway Fall Round Up** - Dirt track racing with the whole family! Gate prices each night: \$10 adult; \$8 seniors and military; \$5 kids 8-12; 7 & under free. Williston Basin Speedway.

DAWSON COUNTY

Events in Glendive unless otherwise listed. CT Zone

Mon., Sept. 7, Labor Day
10 a.m.-5 p.m. **Glendive Dinosaur & Fossil Museum Open For Labor Day** - For more information visit www.creationtruth.org.

Cornerstone Bank Expands Financial Services

Submitted by SVP/
Director of Marketing and
Communications
Kristin Jaeger

Cornerstone Bank is excited to announce the availability of Private Wealth Advisors serving Bismarck, Dickinson, Watford City, New Town, Parshall, Plaza and Makoti.

Ryan Dressler has joined Cornerstone Financial Group as a private wealth advisor. Dressler earned his degree from the University of North Dakota. He has been working in the financial services industry since 2016 and holds his Series 7, 63, and 66 through LPL Financial and is licensed for Life, Annuity, Health and Long-Term Care Insurance. Dressler is a Bismarck native and currently resides there with his wife, Ashley and their daughter.

Jeremy Gunderson has joined Cornerstone Financial Group as a private wealth advisor. Gunderson earned



Jeremy Gunderson
(Photo submitted)

his degree in Investments from the University of North Dakota. He has been working in the financial services industry since 2012 and holds his Series 7, 63, and 66 through LPL Financial and is licensed for Life, Annuity, Health and Long-Term Care Insurance. Gunderson is a native of Bismarck and resides there today.

Cornerstone Financial



Ryan Dressler
(Photo submitted)

Group offers a full range of financial services such as Estate Planning, Financial Planning, Life, Disability and Long-term Care Insurance, Stocks, Bonds, Brokered CD's, and Mutual Funds, Qualified Retirement Plans, Traditional, Roth, & Rollover Services, and Fixed and Variable Annuities.

Letter To The Editor To the Residents of Richland County

On behalf of the Office of Sheriff and my staff, I want to express our appreciation for your continued support during these trying times.

We are seeing changes across the nation affecting the relationship between law enforcement and the public. Our community continues

to show their confidence, providing morale support and funding our work with your tax dollars.

The year 2020 has presented Richland County residents with many challenges relating to economics, health, education and public safety. As Sheriff, I recognize

these challenges and pledge that I and my staff will work diligently to fulfill our mission to protect and serve the residents of Richland County. It is an honor to serve a community that supports the Office of Sheriff.

- John K. Dynneson,
Sheriff

Sidney Kiwanis Welcomes New Member

New Kiwanis member Wade Whiteman was inducted into the Sidney Kiwanis Club, Thursday, Aug. 27 and is sponsored by Garth Kallevig. Wade is vice president at Stockman Bank Sidney (Photo submitted)



RICHLAND COUNTY FAIR & RODEO CENTENNIAL RIFLES



PURCHASE AT THE FAIR OFFICE
406-433-2801 - JLARSON@RICHLAND.ORG

With the right
financial advisor,
life can be brilliant.



Kristopher Mrachek, CFP®, APMA®, AEP®
Private Wealth Advisor



Legacy Financial Partners
A private wealth advisory practice of Ameriprise Financial Services, LLC.

1500 14th St W Suite 210
Williston, ND 58801
701.577.4697
Kristopher.S.Mrachek@ampf.com
planwithLFP.com



Legacy Financial Partners
Ameriprise Private Wealth Advisory Practice

Ameriprise Financial Services, LLC. Member FINRA and SIPC. © 2020 Ameriprise Financial, Inc.

Fall Classes Open For Registration

For details and to register, visit handyandysnursery.com or our Facebook page

September 12 Fall Cauldron
September 19 Succulent Cement Minis
September 26 Fall Arrangement

*Fall Cauldron
September 12th*



Monday - Friday: 9am - 5:30pm
Saturday: 9am - 5pm
3515 West Front St
Williston, ND | 701-572-6083

Handy Andy's
Nursery
Since 1952

80 OF THE FINEST CLASSIC AND COLLECTOR CARS

★ 9TH ANNUAL MONTANA ★
CLASSIC CAR AUCTION
1248 1ST AVENUE NORTH, BILLINGS
★ **SEPTEMBER 5** ★
2020



LUNCH AVAILABLE!

DOORS OPEN AT 9 AM

FOR PRE-AUCTION
INSPECTION AND
BIDDER REGISTRATION



AUCTION
BEGINS AT
NOON

WWW.CLASSICCARAUTION.US ★ 406-698-7930

Sidney Health Center Proudly Welcomes

Dr. Noel Nguewoun Internal Medicine

Sidney Health Center is pleased to welcome Dr. Noel Nguewoun to the medical staff as an internal medicine physician. Starting in September, he will be seeing patients through the Primary Care Clinic.

Dr. Nguewoun provides a wide range of primary care services to adults 18 years of age and older. His scope of practice includes preventive care and health maintenance. Also diagnosing, treating illnesses and managing chronic conditions including, but not limited to high blood pressure, heart disease, diabetes, lung disease, and obesity.

Now Accepting
New Patients

To schedule an
appointment, please
call 406-488-2510



SidneyHealth.org
214 14th Ave SW | Sidney, MT



**SIDNEY
HEALTH
CENTER**

Exceptional Care for Life

The Roundup Classifieds

Get Up To 30 Words For Just \$9.25 • Deadline: Monday noon

Reach Over 21,000 Readers Each Week In Eastern Montana & Western North Dakota And Always On The Internet at roundupweb.com

(Paypal required for online purchases)

Add a photo to your classy online! (additional charge)

Now Taking Credit Cards! (5% charge added to all transactions)

HELP WANTED
PART TIME HOUSEKEEPER
Fairview School is looking for a part time housekeeper. (20 hr week) Duties will include cleaning the fitness center. The application can be found at www.fschool.org >Resources>Employment >Classified Application. Return the application to the Superintendents office.

HOME HEALTH CARE TOBACCO GARDENS
Three days a week, 406-489-2922.

START YOUR REWARDING CAREER TODAY!
Must be motivated and a self-starter. Reliable vehicle necessary. Duties include advertising sales for the Sidney/Fairview area,

answering office phone, billing assistance, type-setting and customer service. Experience a plus, but not required. Compensation to be discussed. Apply at Sidney Job Service.

FREELANCE REPORTER
The Roundup Newspaper is looking for a Freelance position for reporter to take photos & write stories at a weekly regional publication. Must have computer skills, valid driver's license and reliable automobile. Short distance travel may be necessary. Required testing for: spelling & grammar (basic), reading comprehension & Microsoft Word 2010 at Job Service. Call 433-1204 for testing. To apply, contact Sidney Job Service for a generic

application.

HANDYMAN
Handyman wanted for wide range of maintenance and repair. 406-489-5195.

DENTAL HYGIENIST
Healthy Smiles Dental is looking for an energetic and motivated hygienist to join our team. Please drop off resume at 203 2nd Ave. SW, Sidney or email drthiessen@midrivers.com.

CARRIERS NEEDED
Need extra cash or want to get some exercise while getting paid? We have carrier routes available in several parts of Sidney. 406-433-3306 or fill out

application at The Roundup, 111 W. Main, Sidney.

FOR RENT
OFFICE FOR RENT
1050 South Central Ave., Sidney, MT. Please call 406-480-2367 for more information.

APARTMENT
2 bedroom, 1 bath, pet friendly, \$625. 406-489-5195.

SERVICES
SMALL ENGINE REPAIR & MOWERS
Also do rototillers, weed wackers and generators. Pickup and delivery available. Call Phil, 702-

912-8090.

DO YOU NEED HELP WITH HOUSEWORK?
Call 406-973-2498! Will dust, vacuum, mop, clean bathrooms, fold laundry, wash dishes. Years of experience.

TRIANGLE R ENTERPRISES
Trenchless water line services, horizontal boring, water line installation, septic installation, rural water connections, licensed and insured. Call 406-489-5378.

ROUND OR RECTANGULAR TABLES & CHAIRS FOR RENT
Parties, weddings, get-togethers. Ultimate Showdown Assoc. Located at Hefty Seed Co. South of Sidney, has tables & chairs for rent. Will deliver. Call 406-488-4338.

FOR SALE
TENT CAMPER
Pop up tent camper for sale, good condition. Call 701-770-5699 or 701-774-8101.

NOTICE
ATTENTION LEAF FOR BLACK TABLE LEFT AT YELLOWSTONE MARKETPLACE
Attention Yellowstone Marketplace customers

who purchased black round table. The leaf for it was left at the store. Call Linda, 406-489-1945.

LEGAL
NEPOTISM RESOLUTION NOTICE
NOTICE IS HEREBY GIVEN that pursuant to the requirements of Section 2-2-302, MCA the Board of Trustees of **Savage School Districts No. 7J and 2** intends to take action on the following matter at Board Meeting to be held on the 15th day of September, 2020 at 7:00 p.m. in the Savage School Commons. The possible employment of **Tess Ler** who is related to Trustee, **Brandon Ler** by consanguinity (blood) within the fourth degree or affinity (marriage) within the second degree for the position of **Co-Concession Advisor**. If you have any questions, comments or objections prior to said Board Meeting, please direct all such inquiries to:

Martha Potter,
Superintendent
Savage School District
No. 7J & 2
Phone Number: (406)776-2317
Fax Number: (406)776-2260

(Publish September 2 and 9, 2020)

Morton Standard
Morton Quality. Classic Designs. Affordable Price.



Learn more at your local sales office

406-939-2211
Sidney, MT

701-845-4411
Valley City, ND

701-352-2882
Grafton, ND

701-222-2555
Bismarck, ND

701-471-3768
Minot, ND

MORTON BUILDINGS

Available to select geographies. Certain restrictions may apply. ©2009 Morton Buildings, Inc. All rights reserved. A listing of GC licenses available at mortonbuildings.com/licenses

Introducing Morton Standard - Our new line of affordable storage buildings with our most popular sizes and options, and the Morton quality you expect. A classic design, with limited, but popular options. From our materials, to our craftsmanship, to our best-in-class warranty, it's the standard for post-frame buildings. The Morton Standard.

mortonbuildings.com/MortonStandard

POSITION AVAILABLE

Advertising Sales Consultant/Administrative Assistant

Must be motivated and a self-starter. Reliable vehicle necessary. Duties include advertising sales for the Sidney/Fairview area, answering office phone, billing assistance, type-setting & customer service. Experience a plus, but not required. Compensation to be discussed.

Apply at the Sidney Job Service

The Roundup 111 West Main • Sidney, MT
406-433-3306
www.roundupweb.com

Get Your Roundup, Ag Roundup or Visitor's Guide In Williston at:

- Simonson's
- 3 Amigos
- Kum 'n Go
- Gramma Sharon's
- Go Go Cafe & Donuts

The Roundup

111 West Main • Sidney, MT
406-433-3306 • info@roundupweb.com

Lunch Menus

Sidney School
Thurs., Sept. 3: Tomato soup, toasted cheese, applesauce.
Fri., Sept. 4: No school.
Mon., Sept. 7: No school.
Tues., Sept. 8: Chicken patty on a bun, oven wedges, grapes.
Wed., Sept. 9: Spaghetti, tossed salad, garlic toast, mandarin oranges.

Savage School
Thurs., Sept. 3: Tostadas, mexi-rice, lettuce cups, cheese, black olives, salsa, sour cream, mandarin oranges.
Fri., Sept. 4: No school.
Mon., Sept. 7: No school.
Tues., Sept. 8: Hamburger gravy, green beans, bread, apricots.
Wed., Sept. 9: Sloppy joes on a bun, fries, veggies, pears.

Rau School
Thurs., Sept. 3: Italian dunkers, green beans, grapes.
Fri., Sept. 4: No school.
Mon., Sept. 7: No school.
Tues., Sept. 8: Crispito, Spanish rice, mixed berries.
Wed., Sept. 9: Goulash, green beans, apple, dinner roll.

Froid School
Thurs., Sept. 3: Biscuits and gravy, scrambled eggs, go-gurts, blueberries.
Fri., Sept. 4: Hot dog on a bun, fries, baked beans, fruit.
Mon., Sept. 7: No school.
Tues., Sept. 8: Tater tot casserole, buns, fruit.
Wed., Sept. 9: Chicken alfredo, garlic bread, veggies, fruit, dessert.

Bainville School
Thurs., Sept. 3: Swedish meatballs, mashed potatoes, green beans, breadsticks, pears.
Fri., Sept. 4: Chicken alfredo, caesar salad, banana.
Mon., Sept. 7: No school.
Tues., Sept. 8: Orange chicken, rice, veggie egg rolls, pears.
Wed., Sept. 9: German pork, spaetzle, sweet and sour cabbage, peaches.

Richey School
Wed., Sept. 2: French dip, au jus, tots, peas, mixed fruit.
Thurs., Sept. 3: Chicken tenders, fries, carrots, applesauce.
Fri., Sept. 4: No school.
Mon., Sept. 7: No school.
Tues., Sept. 8: Tacos, fresh veggies, pears.
Wed., Sept. 9: Corn dogs, fries, corn, pears.

Culbertson School
Wed., Sept. 2: Chicken fried steak, mashed potatoes, gravy, broccoli.
Thurs., Sept. 3: Riblet sandwich, fries, pears.
Fri., Sept. 4: Picture day! Pizza, breadsticks, marinara, pineapple. 2 p.m. out!
Mon., Sept. 7: No school.
Tues., Sept. 8: Soft shell tacos, rice, churros.
Wed., Sept. 9: Spaghetti, green beans, breadsticks.

Lambert School
Thurs., Sept. 3: Goulash, corn, buns, fruit.
Fri., Sept. 4: Italian dunkers, peas, fruit.
Mon., Sept. 7: No school.
Tues., Sept. 8: Meatballs, mashed potatoes, gravy, buns, broccoli, fruit.
Wed., Sept. 9: Roast beef and swiss, chips, fruit.

Fairview School
Thurs., Sept. 3: Hot dogs, macaroni and cheese, veggies, fruit.
Mon., Sept. 4: No school.
Fri., Sept. 7: No school.
Tues., Sept. 8: Chicken burgers, pasta salad, fruit.
Wed., Sept. 9: Chef salad, veggies, fruit, breadsticks.

Alexander School
Thurs., Sept. 3: Tater tot hotdish, green beans, dinner roll.
Fri., Sept. 4: No school.
Mon., Sept. 7: No school.
Tues., Sept. 8: Super nachos.
Wed., Sept. 9: Shredded pork on a bun, wedges.

Watford City School
Tues., Sept. 8: Soft pretzel with cheese sauce, carrots, strawberry cups.
Wed., Sept. 9: Hot dogs with macaroni and cheese, corn, peaches.

☆☆☆☆☆☆☆☆☆☆☆☆☆☆☆☆☆☆☆☆

Labor Day

☆☆☆☆☆☆☆☆☆☆☆☆☆☆☆☆☆☆☆☆

Advertising & News
Deadline for our
Sept 2nd Issue is
10am Thurs, Aug 27th.

HAVE A SAFE & HAPPY LABOR DAY WEEKEND!

The Roundup 111 West Main
Sidney, MT • 406-433-3306

The Roundup Classifieds

Reaching over 10,889 Households in Western North Dakota and Eastern Montana Every Week

(Please Print)

(1) _____	(2) _____	(3) _____	(4) _____	(5) _____	(6) _____
(7) _____	(8) _____	(9) _____	(10) _____	(11) _____	(12) _____
(13) _____	(14) _____	(15) _____	(16) _____	(17) _____	(18) _____
(19) _____	(20) _____	(21) _____	(22) _____	(23) _____	(24) _____
(25) _____	(26) _____	(27) _____	(28) _____	(29) _____	(30) _____
(31) _____	(32) _____	(33) _____	(34) _____	(35) _____	(36) _____

(31) (\$9.35) (32) (\$9.45) (33) (\$9.55) (34) (\$9.65) (35) (\$9.75) (36) (\$9.85) (etc)

\$9.25 for 30 words or less; 10¢ per additional word

Payment Must Accompany Ad

of words _____ x # of Times _____ = Cost \$ _____

Mail To: Name _____
The Roundup
PO Box 1207, Sidney, MT 59270

NOW SELLING NEW AND USED TIRES
offering light mechanics as well

MAGNUM MOTORS
Williston, ND • 701-572-0114 • 770-6375

INSTALLED WINDSHIELDS FOR MOST MAKES AND MODELS

MAGNUM MOTORS
Williston, ND • 701-572-0114 • 701-770-6375

POSITION AVAILABLE


Savage School is receiving applications for either a Head Cook Position or an Administrative Assistant Position

ONLY ONE POSITION WILL BE FILLED

If you are interested in one of these positions, please call the office for more information and a district application. A background check will be done and references will be required.


School office: 406-776-2317
Email marthap@savagepublicschool.com

Inspired to CARE



Join our team! Job Opportunities

Cancer Care Radiation Therapist	Laboratory Medical Technologist (MLS/CLS) or Medical Laboratory Technician (CLT)
Clinic RN or LPN ENT Clinic Primary Care Clinic Receptionist	Phlebotomist/Lab Clerk
Dining Services Clinical Dietitian Cook Food Service Worker II Utility/Dishwasher	Lodge Cook Resident Assistant
Environmental Services Housekeeper Laundry Aide	Nursing Registered Nurse ER Registered Nurse Med/Surg Registered Nurse OB
Extended Care Assistant Director of Nursing Certified Nurse Assistant Licensed Practical Nurse Registered Nurse Senior Executive Social Services Manager	Sleep Lab Technician Surgery Certified Scrub Technician Sterile Processing Technician
	Telemedicine In-Room Presenter Visiting Nurse/Hospice Registered Nurse



SIDNEY HEALTH CENTER
Exceptional Care for Life

For additional information or to apply online, visit our website or contact:
Human Resources at (406) 488-2571
HR@sidneyhealth.org
216 14th Ave SW • Sidney, MT

BENEFITS: Health insurance • Generous paid leave • Competitive pension plan • Flexible spending accounts • Voluntary dental, vision, critical illness and accident insurance • Life and AD & D Insurance • Hospital and Fitness facility discounts

Visit Our Website at: www.sidneyhealth.org

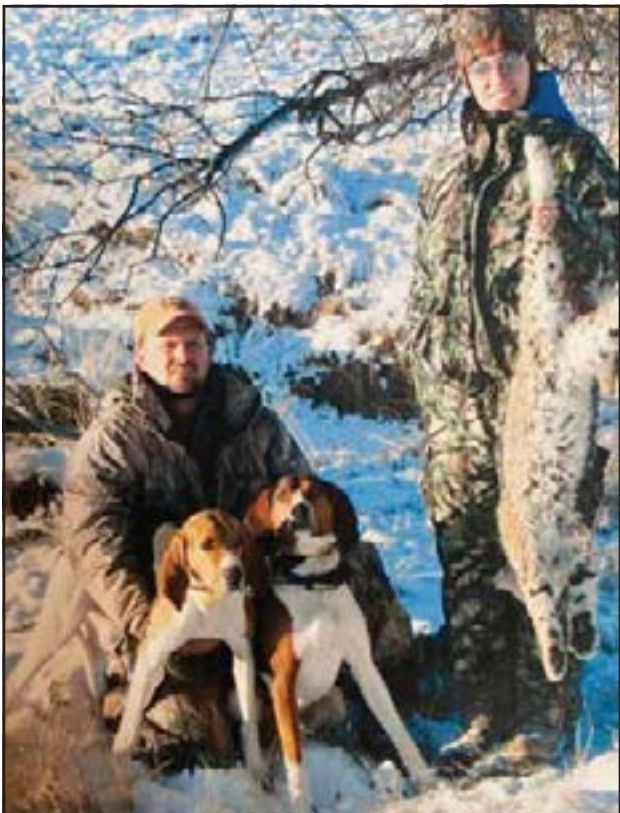
HUNTING

Special Section

Hunting: A Family Tradition for the Thiels



Chuck Thiel with the antelope he shot by Savage.



Chuck Thiel with his hunting dogs and Jesi Thiel with her bobcat that she shot.



Chuck Thiel with the elk he shot by Seeley Lake, MT.



Chuck Thiel with the whitetail deer he shot by Savage. (Photos submitted)



Chuck Thiel with the mountain goat he shot by Bozeman, MT.



Jesi Thiel with the mountain lion she shot by Seeley Lake, MT.

GUNS 'N' THINGS, LLC

Selling:

- Fire Arms
- Accessories
- Reloading Equipment
- Ammunition

PLUS:

- Pawn
- Gun Smithing
- Special Orders
- Gift Certificates
- Smartwool Socks
- Montana Mapping Land-owner Chip For Your GPS

406-377-3969 or 939-GUNS
Mon-Fri: 9am - 6pm • Sat: 9am - 4pm • Sun: Closed
305 N. Merrill • Glendive, MT

Outsider's

WATFORD CITY, ND

Open 7 Days A Week
10am - 1am
Kitchen Closes at 11pm

BAR & GRILL

Serving The Area's BEST
Breakfast, Burgers, Steaks, Wings & Sandwiches. Plus A Full Bar!

Stop In Before & After Hunting For Breakfast, Lunch or Dinner!

905 3rd Ave SW (South of Watford Motel) • 701-842-2693

By Anna Dragseth

Chuck Thiel comes from a long line of hound hunters. His family has been raising and hunting with hound dogs for over 80 years!

"My dad was a hound guy, and so was my grandpa and great-grandpa," stated Chuck Thiel.

Thiel carried on the hound hunting tradition and still actively hound hunts with his family, but his passion for hunting encouraged him to seek out other hunting avenues at a young age. "I have been hunting my whole life. My dad kind of got me into it, but I took off

at a young age and went hunting for all different kinds of animals."

Chuck has hunted in many different states, including parts of Wyoming, Montana, North Dakota, Idaho, and even Canada. He has hunted a variety of animals such as moose, elk, deer, antelope, bears, mountain lions, bobcats, coyotes, and raccoons. "My favorite thing to hunt would probably be bobcats, but mountain lions are pretty fun to hunt, I run both of them with my hound dogs. I also really enjoy bow hunting whitetail deer; those would be among my

top favorites," added Chuck.

Chuck is a very active bowhunter. "As far as bow-hunting goes, I am pretty big into it. This year I am looking to shoot either a whitetail or mule deer buck with my bow, and I will also bowhunt an antelope pretty soon," said Chuck.

In addition to bowhunting, Chuck also likes to hunt pheasants with his Labrador Retrievers, trap, rifle hunt, and of course, hunt with his hounds, but he says that his family is what makes hunting fun. "There has not been an animal that I have harvested

Continued on page 7A.

Get Ready For Hunting!

- Ammo • Coolers • Bags • Backpacks • Fleece, Sweaters & Button-down Shirts • Knives • Binoculars • Flashlights • Headlamps • Boots by Muck, Ariat & Twisted X • Camo Balaclavas, Hats, Gloves & Outwear • Hunting Blinds • Food for on-the-go

Est. 1929
Farmers Union Oil Co.
of Watford City, ND

501 6th Ave SE
5am - 10pm Daily • 701-444-3639

MARK YOUR TERRITORY WITH MAN-CAVE DECOR!

Barrett Pharmacy & Variety

145 Main • Watford City, ND • 701-842-3311

Flattening The Curve On Chronic Wasting Disease

By Tom Puchlerz
It's cool this morning. There is a different feel to the air. The days are slowly getting shorter, my bird dogs are getting restless and I am listening for that first bugle of a bull elk down in the river bottom. It's that time when I, and all hunters, anxiously prepare for the glorious days we spend pursuing

our quarry in the forests and uplands of our Montana. But this year things are different, and as we take to the field we must acknowledge that difference and change our behavior for the sake of the hunt, our wildlife and our fellow hunters.

Over the past six months Montanans have gotten a lesson in "flattening the curve" and as a state we're working hard to keep COVID-19 spread to a minimum. We've learned the importance of social distancing and surveillance testing. It's a lesson we can use to protect our deer, elk and moose from Chronic Wasting Disease; the always-fatal neurological condition that was first detected here in 2017 and is spreading across the state.

As we've learned, social distancing is essential to limit the spread of COVID-19 in people. That means being physically separated by enough space to prevent

transmission. We've had to work from home, shut down large swaths of our economy and limit gatherings. It's been tough, but necessary.

As with COVID-19, keeping large concentrations of wild deer and elk from occurring is critical in limiting the spread of CWD. The disease is spread through bodily fluids and direct contact between animals, so when they're concentrated in large groups it's far more likely to spread. As there is no known immunity and the disease is always fatal, our only option is to reduce the density of game in areas with a high prevalence of CWD. It's a difficult proposition, because as hunters and wildlife enthusiasts we all like to have an abundance of animals.

Testing, like with COVID-19, plays a critical role in the management of CWD. With a robust, proactive testing program for hunter-harvested animals we can detect areas with higher prevalence of CWD and focus on these hotspots to lower the spread. Montana is off to a good start since the first detection of CWD in 2017. Last year large scale testing occurred for the first time and the roughly 7,000 animals sampled showed an infection rate of 2%. That's a level we can live with and we

need to keep it there.

So, what can we do as individual hunters? First, do not inadvertently spread the disease. This happens by transporting and disposing game carcasses improperly. Montana just updated its statewide regulation on the transport of game carcasses and requires them to be either left in the field or disposed of in a Class One landfill in the area where the animal was killed.

Second, report any animals that show signs of CWD (i.e.: underweight, confusion, stumbling) and participate in the state's proactive testing program of hunter-harvested animals.

Finally, keep informed about CWD prevalence in areas you hunt. Do your part in keeping animals dispersed by participating in hunts designed to keep large groups of animals from congregating and by supporting hunter access initiatives that keep our elk and deer well distributed on the landscape during our liberal general hunting season.

As hunters, we must be committed to doing our part to "flatten the curve on CWD."

Tom Puchlerz is a retired biologist, U.S. Forest Service. He serves as Montana Wildlife Federation president.

GET WHERE YOU NEED TO BE THIS HUNTING SEASON



Arnie's Motorcycle

Side-by-Sides & ATVs by

701-572-3382 | 503 2nd St W • Williston, ND

Hunting For A Great Deal? Check Out Our Inventory Reduction Sale!



All New & Used RVs In Stock On Sale Now!

Unicover Toppers Are Also Available

Amunrud's RV, Inc.
Sales & Service Center
406-433-2226 • www.amunrudsrvinc.com • Hwy 16 S., Sidney, MT

BRANDS YOU CAN TRUST!

OPTICS

**LEUPOLD** **RITON**

COOLERS, CAMP STOVES & MORE



KNIVES FROM



FIREARMS

GREAT SELECTION OF AMMO

**RUGER**
**Savage Arms**
The Definition of Accuracy
Remington

CAMPING SUPPLIES & FULL LINE OF AMMO

JOHNSON
HARDWARE & FURNITURE
since 1915

Mon-Fri: 9AM - 5:30PM
Sat: 9AM - 4PM
www.JOHNSONHARDWAREANDFURNITURE.COM



RUGBY HOMES

& RV CENTER

Mon-Fri: 8am - 5pm • Sat: 9am - 3pm | 701-776-5878 • 701-572-2250
321 Gate Ave • Williston, ND | rugbyhomesandrvcntr.com

AFTER YOU BRING IN THE

BIG ONE...





STOP IN & CHECK OUT OUR COOL SPECIALS!

D & M's Office
10 a.m.-1 a.m. Mon.-Sat. • 12-10 p.m. Sun.
701-842-6132 • 115 Main • Watford City, ND

For All Your Hunting Needs This Fall, Stop In To Horizon Resources!



**horizonresources**
Solutions for your success.

CONVENIENCE STORE LOCATIONS IN:
Williston, Ray & Wildrose,
North Dakota & Fairview, Montana

1.800.247.15584 | www.horizonresources.coop

HUNTING FOR A GREAT MEAL?

Family Dining
Pizza • Burgers
Beer & More!





Free Ice Cream With Purchase!
Fairview, MT • 406-742-5180
Open Tues-Fri at 4:30 pm • Sat & Sun at 2 pm

Montana FWP
Offering Free
Online Courses
For Hunter
Bowhunter
Education Students

Montana Fish, Wildlife & Parks is offering online hunter and bowhunter education courses this year in response to social distancing requirements and restrictions on group gatherings related to COVID-19.

To take the online hunter education courses, Montana students can get the free code by accessing our website at <http://fwp.mt.gov/education/hunter/> and select the course you want to take.

The online courses, which are developed and administered by the outdoor education company Kalkomey, include text, videos and interactive scenarios to engage students. Students will need to pass a final test to qualify for a certificate.

At this time, students aged 10 and 11 (under age 12 before Jan. 16, 2021) will not have an option for an online class. Those students can hunt as an apprentice this year. To learn how to sign up for the hunter apprentice program, go to: fwp.mt.gov/hunting/licenses/all/apprenticeHunter/default.html

If there are any questions, please call your local FWP office or 406-444-9947 or 406-431-0539.

Hunting: A Family Tradition...

Continued from page 5A.

that my wife and my kids haven't been there with me (for years). My whole family was with me when I killed my mountain goat. It was a good time just because everyone was there and we had to hunt pretty hard for it," stated Chuck.

Chuck's wife, Jesi, has been just as active as Thiel when it comes to hunting. "Our family does it all together, my wife included, she is a hardcore hunter! A couple of years ago, my wife killed a monster mountain lion, and that was awesome, I mean I have treed hundreds of lions, but that one was the

biggest one that I have ever seen," said Chuck

Both of Thiel's sons, Sterling and Sawyer, are also big into hunting. "One of my sons killed a giant whitetail in 2019."

Last year, Chuck was particularly excited because he got the opportunity to fill a tag-of-a-lifetime with his son, Sawyer. Chuck said, "My son and I drew two bull tags up at the lake last year, and it was kind of neat because I have put in for 30 some years to draw that tag, and my son drew one the same year I did!"

When Chuck was asked what his favorite part about hunting is, he explained,

"Just the fact that I get to have fun with my family. As long as my family is involved and having a good time, it makes it worthwhile."

Hunting is a "several generation thing" in the Thiel family, and they plan to carry on the tradition of hunting for many more generations.

Enjoy The Great Outdoors This Year!
LOW RATE SECURED LOANS
We Finance The Fun Things In Life!
Richland
FEDERAL CREDIT UNION
NMLS ID#480123
201 W Holly St • Sidney, MT | 406-482-2704
18 E 2nd St • Culbertson, MT | 406-787-5890





- Horse Trailers
- ATV's
- Boat Trailers
- Flatbed Trailers
- Utility Trailers
- Campers

IN ADDITION TO CARS, TRUCKS & FARM IMPLEMENTS

WE HAVE TIRES FOR

- Motor Homes
- Garden Tractors
- Golf Carts
- Wheelbarrows
- Tillers
- More

If we don't have it, we can get it! We can also get rims.

WESTERN TIRE
1601 South Central
Sidney, Montana

 433-3858
Open 7-5:30 M-F

All The Gear You Need For Hunting Season

ARCHERY


FIREARMS


OPTICS


KNIVES


CLOTHING


**One Location To Serve You Better!**
440 N Central Ave • Shops at Fox Run
Sidney, MT
4 Athletics
406-433-1800 | Mon-Sat: 9am - 6pm • Sun: 10am - 4pm

Energy Roundup

Whiting Petroleum Announces Expected Appointment of Lynn Peterson as CEO
Company Also Announces Expected Changes to Board of Directors

DENVER--(BUSINESS WIRE)--Whiting Petroleum Corporation (NYSE: WLL) ("Whiting" or the "Company") announced the expected appointment of Lynn Peterson, a 40-year oil and gas industry veteran, as chief executive officer, effective as of the company's anticipated emergence from chapter 11, which is projected to occur on Sept. 1, 2020. Peterson succeeds Bradley J. Holly, who will resign effective at that time to pursue other interests following the company's restructuring. Peterson will also join the company's board of directors.

"We thank Brad for his leadership and strategic contributions that built the foundation for Whiting to expeditiously complete its financial restructuring and implement pivotal enhancements with a stronger balance sheet and improved

cost structure. During this period of unprecedented volatility for the industry, Whiting set the standard for executing on a challenging business plan. In addition, over his tenure he built a strong management team and advanced the company's efforts in sustainability with a focus on diversity and inclusion," said James Catlin, Whiting's lead director. "As a board, and in partnership with Brad, we are committed to conducting an orderly emergence from chapter 11 and transitioning seamlessly to the new executive leadership team which has a strong track record of maximizing shareholder value through transactions in the basins where Whiting operates."

Upon the company's emergence from chapter 11, Whiting will also welcome a new independent Board of

Directors that is anticipated to consist of Chairman Kevin McCarthy (Kayne Anderson Capital Advisors vice chairman), Janet L. Carrig (former Conoco Phillips senior vice president & general counsel), Susan Cunningham (former Noble Energy, Inc. executive vice president), Paul Korus (former Cimarex Energy Co. senior vice president and chief financial officer), Daniel Rice (Rice Investment Group founder and partner, former Rice Energy CEO) and Anne Taylor (former Deloitte vice chairman & managing partner).

"We believe that Lynn brings strong leadership, extensive industry knowledge and unique perspective to Whiting's business in the Williston and DJ basins, leveraging his deep experience that includes operating the same cornerstone asset

during his tenure at Kodiak prior to its acquisition by Whiting," said new incoming Chairman Kevin McCarthy. "Lynn's strategic and operating experience will allow us to enhance and capitalize on the company's attractive portfolio as we look to create value for our shareholders."

Peterson most recently served as SRC Energy Inc. Chief Executive Officer and Chairman before its combination with PDC Energy, Inc. in January 2020. Prior to SRC Energy, Peterson was Kodiak Oil & Gas Corp. co-founder, chief executive officer and chairman before its integration with Whiting in December 2014. Peterson began his career in accounting and auditor roles at Ernst & Young and holds a Bachelor of Science in Accounting from the University of Northern Colorado.

"I am honored to join



and lead the Whiting team of talented employees and eager to work alongside our new board of directors, which is one of the finest assembled in the E&P sector, to build upon the momentum achieved through the restructuring for a bright Whiting future.

With a keen focus on excellence, discipline in all facets of our operations, continuing emphasis on environmental, health and safety, and good citizenship within the communities in which we live and operate, I am confident that Whiting will create value even in this

challenging environment.

As we emerge from chapter 11, the company has significantly reduced its leverage and strengthened its balance sheet. Moving forward, we expect to focus on the development of our top-tier Bakken acreage, further reducing our leverage, and driving down operating and G&A costs. This should position the company well for the anticipated industry consolidation that we expect to see in the coming years, particularly in the opportunity-rich landscape of the Williston Basin."

Count on Tractor & Equipment Co. and T&E The Cat Rental Store, for all your equipment buying and rental needs. From concrete saws to heavy construction equipment, we offer products from Cat® and other leading brands to meet most jobsite needs.

Lindsay Smith
406-696-0714

T & E 

We Are Your Oilfield Supply Headquarters!



Down Hole Sucker Rod Pumps
Tubing Anchors • Gates
Hydraulic Hoses & Belts
Ballon Ball Valves • Line Pipe • Tubing
Fittings • Norris Sucker Rods

Stanley, ND
701-628-8706
Sidney, MT
406-488-8706 • rpands@midrivers.com

Customer Service is Our #1 Priority

Border
STEEL & RECYCLING, INC.

Farm & Ranch, Oil Field & Construction Materials, Fencing Supplies, New Steel, Pipe, Aluminum & Stainless

Sidney: 35002 CR 123 • 406-433-7737
Glendive: 2703 W. Towne St. • 406-377-4398
Plentywood: Hwy 16 East • 406-765-2624

Williston: 4705 W. Front St. • 701-572-5493
Miles City: 12 Peggy Lane • 406-874-7428

**UINTAH**

SURVEYING • ENGINEERING • DRAFTING

104 2nd Ave SW, Suite 300 • Sidney, MT
406-433-9650 | www.uintahgroup.com

HURLEY'S
OILFIELD SERVICES

- Porta Potties • Potable Water
- Loaders • Communications • Backhoe
- Trucking • Skid Houses

Dispatch: 701-844-1234 | Fairview, MT

NEW!

Massimo Motor Dealer

• ATV • UTV • BIKE • FUN!



• FFL Licensed Fire Arms Dealer

• Live Bait/Fishing Tackle & Supplies

• MT Hunting & Fishing Licenses

• Cover Seats & Upholstery For Motorcycles & ATVs

ALL-SEASON
MOTORSPORTS

123 7th St SW • Sidney, MT

406-433-6712 • After Hours: 489-3837

(1/2 Block west of Loaf n' Jug)

SEE US FOR YOUR
OUTDOORS AND
SPORTING NEEDS!

• Hunting & Fishing Equipment

• Camping Gear & Apparel



440 N Central Ave • Shops at Fox Run
Sidney, MT



406-433-1800 | Mon-Sat: 9am - 6pm • Sun: 10am - 4pm

Enjoy The Great
Outdoors This Year!

LOW RATE
SECURED
LOANS

We Finance The
Fun Things In Life!



FEDERAL CREDIT UNION
NMLS ID#480123


201 W Holly St • Sidney, MT | 406-482-2704

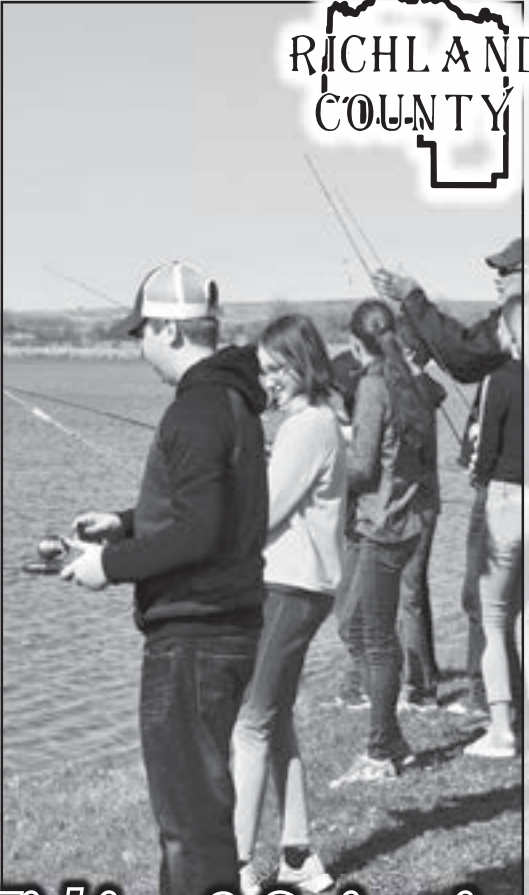
18 E 2nd St • Culbertson, MT | 406-787-5890





Explore





Fishing & Swimming
at Gartside!

OUTDOORS

Local Conservation Key to Big Goals



Nick Gevock (Photo submitted)



Rachelle Schrute (Photo submitted)

By Nick Gevock and Rachelle Schrute

As Montana hunters and anglers, we know a lot about restoring wildlife and habitat through solid conservation efforts. We've been doing it for over a century and those decades of conservation work has led to the abundance of wildlife we enjoy today.

At the turn of the 20th Century, we had reduced the massive big game herds to a boneyard. There were roughly 5,000 elk in Montana and nearly every other species was faring just as poorly.

Montana hunters, working closely with landowners, the fledging Fish and Game Department and others, set about restoring wildlife. Today, more than 170,000 elk roam our great state. The deer and antelope populations have rebounded, and countless other wildlife species have bounced back.

We learned early on that habitat protection and restoration are the key elements for wildlife. That work continues today through our efforts to protect important habitat on public lands, our work to restore key areas from degradation and the collaboration efforts with private landowners to maintain working farms and ranches that provide important habitat for wildlife.

Our cooperative efforts in Montana coincide perfectly with a national campaign called the "30x30" initiative. It's an ambitious conservation vision to conserve 30% of lands and waters by the year 2030. The initiative is backed by scientists and is supported by local and national elected officials, businesses, and conservation organizations.

We know this goal sounds difficult, but in Montana we've been at this for decades. That experience has taught us that the best conservation efforts start at the grassroots level in local communities with broad stakeholders coming together to solve difficult issues by taking everyone's interests into account.

The grizzly bear is a prime example of a species that was in serious jeopardy just four decades ago but has seen a strong comeback following numerous solid conservation measures. Recently, Governor Steve Bullock's Grizzly Bear Advisory Council completed nearly a year's worth of work to craft recommendations for future grizzly conservation and management.

It acknowledges that grizzlies will continue to expand in numbers and range, and calls for increased public education

and on-the-ground measures to reduce conflicts with livestock and people. Building a landscape that they can move through with minimal conflict is essential to future grizzly conservation and will be the result of partnerships between Montana hunters, anglers and landowners toward common sense and effective wildlife conservation.

This is just one small example of the locally based efforts in Montana to maintain our open space and the shared outdoor heritage it supports. There are numerous other public-private partnerships that make a real difference for the people who live and work in these areas and contribute so much to thoughtfully conserving Montana's land.

The 30x30 goal may seem daunting but taking it on is like eating an elephant – one plate at a time. For Montanans, this is how we have carried out wildlife conservation for decades; by bringing everyone to the table and solving the difficult issues around wildlife and the habitat needed to maintain it. With solid cooperation, this will continue well into the future to maintain the state we all love.

Nick Gevock is the Montana Wildlife Federation conservation director and serves on the governor's Grizzly Bear Advisory Council. Rachelle Schrute is co-lead of the Montana Artemis Alliance.

Montana FWP Taking Comment On 2021 Fishing Regulation Proposals

FWP is accepting comment on proposed fishing regulations for 2021. The department has 20 proposed changes for 2021, with most changes involving minor corrections and clarifications to avoid confusion and inadvertent violations.

One larger-scale proposal is requiring mandatory catch, kill, and report of all walleye captured in the Western Fishing District. The intent of this regulation is to prevent additional illegal introductions of walleye in western Montana and to potentially help the department detect illegal introductions and take action sooner. Noxon Reservoir and Cabinet Gorge Reservoir, where established walleye populations are already known to exist, would be exempt from this regulation.

Another proposal would place a bag limit on crayfish harvested from McGregor Lake in NW Montana. McGregor Lake has a native crayfish population and there is growing concern that harvest for consumption as well as predation from illegally introduced smallmouth bass could have population scale impacts to the crayfish population.

Other proposed changes involve clarification on use of live bait fish in the Central and Eastern Fishing Districts, improve consistency of kokanee salmon fishing regulations in central Montana, changing regulations for some new and existing kid's fishing ponds, among several other relatively minor clarifications.

To see all the proposed changes, please visit the FWP website at <http://fwp.mt.gov/fish/publicComments/regsProposals.htm>.

The department will be taking comment on the proposed changes until Sept. 17. Comments can be submitted through the FWP website, emailed to fwpfish@mt.gov, or sent via U.S. Mail to Fishing Regulations, PO Box 200701, Helena MT, 59620.



IN ADDITION TO CARS,
TRUCKS & FARM IMPLEMENTS



WE HAVE
TIRES FOR

•Horse Trailers

•ATV's

•Boat Trailers

•Flatbed Trailers

•Utility Trailers

•Campers

•Motor Homes

•Garden Tractors

•Golf Carts

•Wheelbarrows

•Tillers

•More

If we don't have it,
we can get it!
We can also
get rims.



1601 South Central
Sidney, Montana

433-3858

Open 7-5:30 M-F

FUEL UP WITH US FOR YOUR NEXT
GREAT OUTDOOR ADVENTURE





horizonresources
Solutions for your success.

Williston, ND
701.572.2171

Fairview, MT
701.742.5273

Malta, MT
406.654.1199

horizonresources.coop

MSU Extension To Offer New Agriculture Business Development Course On Direct Marketing Meat

From MSU News Service

Bozeman - Montana State University Extension, in conjunction with Oregon State University, will offer a new agriculture business development course on direct marketing meat. The Western Meat School, Montana Edition, is an online or hybrid learning experience for farmers, ranchers, butchers and others. The six-week course will meet on Wednesday evenings beginning Nov. 4. It will cover key topics in production, processing and marketing to produce high-quality meat and then sell it to diverse market channels. It is not a processing or butchering course.

The adult education course is intended for a range of individuals, including farmers and ranchers with at least a couple years' experience; meat processors and butchers; meat buyers, distributors and retailers; Extension specialists, agents and educators; and those from nongovernmental organizations working on local livestock and meat supply chain issues.

The entire course will be available in real time online. A socially distanced group watching site is planned for 10 to 12 attendees in Billings, depending on guidance at the time from the state of Montana, MSU, local public health officials

and the Centers for Disease Control and Prevention. The group component may be adapted or canceled for safety.

The course cost is \$120 per individual or \$160 for couples or business partners, with online registration at <https://westernmeatschool.com/enroll>. Registration is open now, and discounts may be available for attendees from Montana. For more information on the course and USDA Western SARE-funded discounts, email or call Tommy Bass, livestock environment associate specialist, MSU Extension, at tmbass@montana.edu or 406-994-5733.

The course is promoted by Oregon State University and the Niche Meat Processor Assistance Network. Colorado State Extension piloted it in 2019. The Western Extension Risk Management Education Center and other secondary sponsors fund development and management of the course.

More information is available at westernmeatschool.com/.

MSU's Virtual Celebrate Agriculture Weekend Scheduled For Nov. 13-14

From MSU News Service

Bozeman - Celebrate Agriculture, an annual weekend-long event held each year by Montana State University's College of Agriculture, has been scheduled to take place virtually Friday, Nov. 13, and Saturday, Nov. 14.

The weekend, which celebrated its 20th anniversary in 2019, will include many of the same elements as an in-person event, as well as some new virtual programming. Scholarship winners and donors will be honored, as will past recipients of the college's Outstanding Agricultural Leader award, which has recognized more than 80 people since its inception in 1995.

Celebrate Agriculture weekend is an opportunity to recognize those people who invest in the future of agriculture and hundreds of agriculture students through those scholarships, said MSU Vice President for Agriculture Sreekala Bajwa. The College of Agriculture awarded more than \$550,000 in scholarships during the 2019-2020 academic year through more than 130 individual awards.

"The scholarship donors that we honor each year at Celebrate Agriculture truly change the lives of so many of our students," said Bajwa, who also serves as College of Agriculture dean and the Montana Agriculture Experiment Station director. "Our tireless supporters and generous benefactors make a direct impact on our students and the work we do in the college. It is their willingness to give and recognition of the importance of agriculture that makes so much of what we do possible."

Virtual content for Celebrate Agriculture will be available Nov. 13 on the College of Agriculture website, <http://agriculture.montana.edu/celebrateag>. The weekend will also include the annual Science as Art Contest for MSU agriculture students, who are tasked with translating their perceptions of science and agriculture into art projects using a variety of media. Celebrate Agriculture will also feature virtual speakers, research presentations, opportunities to engage with students and faculty within the college, and departmental celebrations.

The Department of Agricultural Economics and Economics will host a virtual version of its usual Agricultural Economic Outlook Conference during the celebration. The web-based conference will be free and open to the public, and will take place on Nov. 13 from 9 to 11:30 a.m. Information on presenters and the conference agenda can be found at <https://ampc.montana.edu/fallconference/>.

"Many things look different this school year, and

one of those is Celebrate Ag weekend. But we also know that making this event virtual is about more than just ourselves. It's about keeping every member of our community safe and

healthy," said Bajwa. "We are so looking forward to coming back to Celebrate Agriculture in person next year, bigger and better than ever."

THANK YOU!



Thank you to Hurley Enterprises & Exploration Drilling for purchasing my 4-H market steer as well as for your continued support of the Richland County 4-H program!
- Allyson Young



Sidney TENDOKAN School of

TAE KWON DO

Fall Class Schedule: Starting Sept. 8th

All Tae Kwon Do Classes
\$50⁰⁰mo
Accepting New Students Anytime, Family Rates Vary

Beginning Youth (Age 5-10)
Mon & Wed
5:30 - 6:15pm
Advanced Youth (Age 5-10)
Tues & Thurs
5:30 - 6:15pm

Beginning/Advanced Youth & Adults (Age 11+)
Tues & Thurs
6:30-7:30pm

For more info, call Mike Bergh (evenings) at 488-8590 or 488-8222
or visit www.facebook.com/sidneytendo

COLLECTIBLE CAR & TRACTOR AUCTION

To preview items contact
Dan Goss
406-480-2778

ROD KILSDONK ESTATE

*** Saturday, September 19th, 2020 9:00am MT ***

The following items will be available for live or online bidding at 10:00am Mountain Time.



1967 Dutch Star motor home, 30', 460 Ford engine, VERY CLEAN

- Sports Cars**
- 1999 Ford TransAm, auto, 5.7L V8, Ram Air Hood, 112544 miles
 - 1990 Corvette, convertible, auto, 5.7L V8, shows 4335 miles (odometer works)
 - 2002 Ford, auto, 3.8L, 80744 miles
 - 1999 Ford, convertible, auto, 3.8L, 78723 miles
 - 2001 Ford, auto, convertible, 5.7L, 70145 miles
 - 2002, Ford, auto, 3.8L, 163000 miles
 - 1994 Corvette, auto, 350 (project car)
 - 1985 Corvette, auto, 350 (project car)
 - 1994 Chevrolet Camaro (project car)
 - 1983 Trans Am, 5 speed, 350, (project car)
 - 1984 Pontiac Fire, 4cyl, manual, (project car)
 - 1986 Pontiac Firebird (project car)
 - 1977 Datsun 280Z, auto
 - 1993 Mustang Convertible, auto, 3.8l (project car)



Collector Cars & Trucks

- 1957 Chevy 3500 NAPCO 4x4, 265 V8
- 1964 Chevy C10 pickup, 2wd 4 spd, long box
- 1948 Chevy 1.5 ton truck
- 1960 Chevy bus
- 1939? DeSoto 4 door sedan, suicide doors
- 1971 VW Camper, 37873 miles, v8, bed down bed, pop up roof. Great Shape!
- 1970 VW bus
- 1965 Dodge Polara 2 door hard top
- 1979 9H Scout
- 1940 Ford 2 door coupe
- 1940 Ford pickup flathead V8
- (2) Mid-30s Chevy pickups
- 1973 Chevy 2wd pickup, long box, 454, 4 speed

- Motorcycles & ATVs**
- 2005 Yike with VW engine
 - 1986 Yike with VW engine
 - 1986 Kawasaki street bike with hard bags
 - 1963 Honda 350
 - Older trike with no engine
 - Yamaha mini enduro (has Honda fuel tank)
 - Kawasaki mini bike
 - Harley Davidson ATV
 - Honda 4 trax (parts)
 - (2) Honda Trail 90 frames

Shop, Lawn & Garden

- Farmhand 60 gallon upright air compressor
- Yard Machine 24" front line trimmer
- ATV Sprayer
- Coleman contractor air compressor
- Central Pneumatic gas powered air compressor
- Black and Decker 1 1/2 table saw
- Century 250 amp stick welder
- Central Machine jig saw
- Miller Roughneck welder with Techweld engine
- Dewalt Acetylene torches and bottles
- Log chains and chain boomers
- Numerous 1.5-2.5 ton floor jacks
- Schrammer 200 amp battery charger
- Spark plug service
- Duracell 8000w gas generator
- Generac 8000w generator
- Pulsar 4500w generator
- Lots of electric drills, reciprocating saw, trouble lights
- 2 ton engine hoist
- Engine stand
- Parts washer
- Propane heaters
- Car ramps
- Aluminum folding ladders
- Wrenches, hammers, sockets, ratchets, pliers, screwdrivers and other hand tools
- Rigid pipe wrenches
- Tire irons, pry bars, wrecking bars, post hole diggers, grouse guns
- Axes and sledge hammers with Technoweld engine
- Large Sledge House Jack
- Rolls of sheep wire
- AC gauges
- Lots of motor oil, grease, shop fluids
- Lots of misc. air filters, oil filters and other parts
- Lots of misc. hardware
- Shovels, rakes, forks
- Slide on Jacobs finish mower for parts
- Many mowers & filters for parts
- Cub Cadet SC100HW 159cc push mower (like new)
- Cub Cadet BC490 trimmer, gas

BID NOW Online Bidding Provided By **EquipmentPhotos**

For simulcast bidding information go to www.montanaauctioncomp.com

Boats & Boat Motors

- 1957 20ft. Crestliner, closed cabin, mercury engine
- 1973 14ft Larson with Johnson Super Sea Horse
- 14ft. Sea Rymph Fishing Machine with 35 Evinrude
- 16ft Sabre Craft, Closed Cabin, 4 cylinder inboard
- 14ft. Early Aluminum Crestliner with 35hp Johnson
- 12ft. Vintage mini speed boat, n engine
- 14ft. Sears with 28hp sears engine
- Vintage Mini Hydroplane boat (no engine)
- 1971 Lonstar bass boat
- Fan boat with Continental A658F airplane engine
- 10ft. Crestliner with 9.9 Johnson
- 14ft. Traveler Atlas w 650 Mercury
- McCulloch-Scott 7.5 hp
- (2) Scott Aviator B&K-matic
- (2) Montgomery Ward's
- (2) Johnson Sea Horse
- Evinrude Elio
- Goodyear
- Sea King
- Sea Horse Ship
- Johnson South Bend
- Eisenman Neptune
- McCulloch Scott
- Goodyear (blue)
- Hawthorn
- Firestone
- Mercury Comet Twin Mark 6
- SC case, narrow front, new tires, repainted
- Fort Major Backhoe, gas engine
- Whiteland, diesel w/ loader, new inductor pump
- Ford 8N, new tires, 3 point, PTO
- S Case, Standard, PTO
- Farnall M, wide front, PTO, hydraulics, not running
- Oliver 70, narrow front, PTO, not running
- Oliver 70, Tricycle, PTO, not running
- Oliver 70, Tricycle, PTO, not running
- IH W9, foot clutch, PTO, HYD, needs carb work
- Super M Farnall with PTO loader, PTO, HYD
- Farnall 560, diesel, adjustable wide front, PTO, TA, Hyd
- Farnall H, tricycle, belt pulley, hyd, PTO
- Farnall H, narrow front, PTO, belt pulley, not running
- Farnall H, tricycle, belt pulley, PTO, new rings
- Farnall H, narrow front, PTO, belt pulley, not running
- Farnall 560 Diesel, F11 loader, hyd, 3PT, PTO, TA, not running
- Minneapolis Moline UTS, Hyd, PTO, not running
- IH 660, F21 Farmhand loader, standard, Hyd, PTO, TA
- Case DC, Tricycle, PTO, belt pulley, repainted
- Case SC, Tricycle, PTO, repainted
- Case 400, adjustable wide front, 3 pt, PTO
- Case D, PTO, Hyd
- Case D, PTO, Hyd
- Ford 9N, Flathead 4 engine
- IH 560 Diesel Wheatland, PTO, Hyd
- IH Super WD9, foot clutch, PTO



RVs & Vehicles

- 1998 Dutch Star motor home, 30', 460 Ford engine, 74,000 miles VERY CLEAN
- 1995 Chevrolet 2500, EXT cab, short box, Air/Brake, auto, 350, 175,000 miles
- 1973 Winnebago Indian, 460 ford engine, shows 74000 miles
- 1998 Jeep Cherokee Laredo, auto, 4x4 (May need work)
- 2000 Pontiac Grand Prix SE, 4 door, auto, 120000 miles
- 1993 Ford F-250, Sept, 4wd, flat bed, 5.8

Trailers

- 2011 Load Trail, 24ft flatbed, bumper pull, ramps, 12,000#
- 24ft, gooseneck, flatbed, 18,000# winch, 7,000# axle (no manufacturer tag)
- 1992 Ponderosa 16ft, gooseneck stock trailer, center gate
- 1992 Diamond D 19ft, Stock Combo, gooseneck, living quarters, tack room
- 1981 Kiefer 14ft, bumper pull stock trailer
- 1970 HW 14ft, bumper pull stock trailer, open top
- 1964 Chevy pickup box trailer
- Toyota pickup box trailer
- Car dolly
- Multiple homemade trailers



Implements & Antique Equip.

- 851 New Holland chain baler
- 8ft, 3 PT blade
- 8ft, 3 pt snow blower
- 3pt Speedee post hole digger
- Du-AI loader
- Danrauser 3pt post driver
- 8ft John Deere back blade
- Manure basket for loader
- Slate spear for loader
- Farmhand grapple
- Caldwell 3 pt post hole digger
- (2) 2 row cultivators
- John Deere 25 pull type combine
- IH Sickle Mower
- Hand cultivators
- Walking plow
- 3 bottom JD plow
- JD Sickle mower
- IH No. 2 horse mower
- IH Dump Rake
- Horsedrawn Slaps
- 2 bottom Dearborn plow
- 1 row IHC corn planter
- 4ft 3 pt sickle mower
- 2 bottom Ferguson 3 PT plow
- Timber PTO Slicer (slicer style)
- 3 PT cultivator

Auctioneer's Note:
Rod was an avid collector of a wide range of unique items. This will be a great chance to bid on some hard to find cars, tractors, and antiques. Plus, a wonderful piece of country property will be offered as well. Plan to spend the day with us September 19th.



MONTANA AUCTION COMPANY
DAN GOSS, AUCTIONEER
12302 CR 341W • SIDNEY, MT 59270
406-480-2778

DIRECTIONS FROM SIDNEY, MT: West from Town Pump truck stop on HWY 200 (Lambert Hwy) for 4.5 miles. Turn south on County Road 345 and travel 1 mile to auction site.



WATCH FOR SIGNS. Lunch will be served.

Real Estate

The Rod Kilsdonk Estate is offering the following property at auction at 1:00 pm:

Legal Description: S10, T22N, R56E, S4SW, +/-40 acres
Real Estate Viewing Dates: By appointment, contact Dan Goss 406-480-2778

Property Highlights: Property Highlights: Quiet country living 4 miles from Sidney, MT! If you have been looking for a quiet place away from town with solitude this is the property for you! Being offered at auction is a one of a kind property at the end of county road 345 which means no traffic. The property features +/- 40.5 acres with a modular home that features +/-1152 sq. ft. of living space located just 1 mile off highway 200. The home has 2 bedrooms and 1 and 1/2 bath, spacious kitchen, dining and living room and sits on an unfinished basement that is also +/-1152 sq. ft. that is plumbed for a bathroom and ready to build to your desire. There is a 24x24 attached 2 car garage that is lined and insulated. Also on the property is a huge 40x100 steel framed shop with concrete floor and electricity. This building would be great for storage or as a workshop. There is a small 18x24 outbuilding with concrete floor and electricity as well. The home also has updated siding, newer asphalt shingle roof, forced air propane heat and central air. There is newer laminate flooring in the kitchen area and brand new carpet throughout the rest of the home. The majority of the acreage is pasture that would provide grazing for a few head of livestock and has also been used as hay ground in past years. There is a small barn area in the corner of the large shop that could be used for 4-H animals or horses. There is a shelter belt in the northwest corner of the property with mature trees and a developing shelter belt with younger trees on the north end of the property. This property has a great view of the Yellowstone River valley and offers a quiet living space with lots of wildlife, plenty of room for pets and animals and lots of gardening area. This is a one of a kind property and the type that doesn't become available often. If you're been looking for an opportunity to move out of town and into a quiet part of Eastern Montana but still be just a few miles from town don't miss out on this property!

Mineral Rights: All Minerals Are Reserved

Taxes: Taxes will be prorated from day of closing.

Closing Costs: Closing Costs will be split between buyer and seller. Buyer will pay any additional financing costs.

Title Insurance: A title commitment has been requested from Richland County Title and Standard owner's title insurance will be provided by the seller through Richland County Title Co. Sidney, MT 59270 (406) 433-8584. All funds shall be held in the escrow account of Richland County Title, 1050 S. Central Ave., Sidney, MT 59270 (406) 433-8584. Your bid is considered acceptance of the terms of this auction. If you, the Buyer, fail to close, the down payment is non-refundable. If the Sellers fail to close, 100% of the down payment will be returned. At this time there is no known reason that the Seller would not be able to close. All information is from sources deemed reliable, but is not guaranteed by the Seller or the Auctioneer. Offering is subject to error, omission, and approval of purchase by seller. Seller reserves the right to refuse any and all bids. We urge independent verification of each and every item submitted to the satisfaction of any prospective buyer. It is every potential bidder/purchaser's sole responsibility to accomplish his or her due diligence in whatever manner he or she deems advisable prior to sale time. The Auctioneer/Auction Company shall not be responsible or liable in any way if the seller fails to honor any bid, or refuses or cannot close title in accordance with the winning bid or any contract entered in respect thereof. Announcements made sale day take precedence over any printed or internet materials. The property sells "As is-Where is." MONTANA AUCTION COMPANY and its auctioneers are acting solely as auctioneers for the seller. For More Information Contact: DAN GOSS, AUCTIONEER - (406) 480-2778 Sidney, MT - MONTANA AUCTION COMPANY SIDNEY, MONTANA 59270

Real Estate Terms: Cash or approved check. The highest accepted bidder will be required to enter into a written buy-sell agreement and tender a five-per-cent (5%) non-refundable down payment at the conclusion of the auction. Title will be transferred by warranty deed with title insurance. The balance is due in cash at closing on or before Monday, October 19th 2020 (Seller will be open to early closing if buyer so desires.) at the office of Richland County Title, 1050 S. Central Ave. Sidney, MT 59270 (406) 433-8584. All funds shall be held in the escrow account of Richland County Title, 1050 S. Central Ave., Sidney, MT 59270 (406) 433-8584. Your bid is considered acceptance of the terms of this auction. If you, the Buyer, fail to close, the down payment is non-refundable. If the Sellers fail to close, 100% of the down payment will be returned. At this time there is no known reason that the Seller would not be able to close. All information is from sources deemed reliable, but is not guaranteed by the Seller or the Auctioneer. Offering is subject to error, omission, and approval of purchase by seller. Seller reserves the right to refuse any and all bids. We urge independent verification of each and every item submitted to the satisfaction of any prospective buyer. It is every potential bidder/purchaser's sole responsibility to accomplish his or her due diligence in whatever manner he or she deems advisable prior to sale time. The Auctioneer/Auction Company shall not be responsible or liable in any way if the seller fails to honor any bid, or refuses or cannot close title in accordance with the winning bid or any contract entered in respect thereof. Announcements made sale day take precedence over any printed or internet materials. The property sells "As is-Where is." MONTANA AUCTION COMPANY and its auctioneers are acting solely as auctioneers for the seller. For More Information Contact: DAN GOSS, AUCTIONEER - (406) 480-2778 Sidney, MT - MONTANA AUCTION COMPANY SIDNEY, MONTANA 59270



For more photos and information go to www.montanaauctioncomp.com

COVID 19 notice: When attending the auction please follow social distancing guidelines recommended by the State of Montana. Feel free to wear a mask. We ask if you are not feeling well or have a compromised immune system please stay at home for your own safety and the safety of others. We will be happy to take phone bids if you are not able to attend the auction. Thanks.

buzzed driving is drunk driving

Did You Know?

- Drunk driving is often a symptom of a larger problem: alcohol misuse and abuse.
- Alcohol-impaired motor vehicle crashes cost more than an estimated \$37 billion annually.
- Every year thousands of people die in alcohol-impaired driving crashes - one every 51 minutes

The national

Drunk Driving. Over the Limit. Under Arrest.

impaired driving crackdown is a comprehensive impaired driving prevention program organized by the U. S. Department of Transportation's National Highway Traffic Safety Administration (NHTSA) that focuses on combining high-visibility enforcement with heightened public awareness through advertising and publicity.

HOTEL ALBERT
Lounge & Casino

419 S. Ellery
Fairview, MT
406-742-5164

Powder Keg PIZZA

Family Dining
Open 4:30 pm Tue-Fri
2 pm Sat & Sun
Fairview • 406-742-5180

Sidney Elks Lodge
BPOE #1782
123 3rd St. SW, Sidney
Open at 4pm Mon-Sat
406-433-2406

GOLD RUSH CASINO

504 South Ellery
Fairview, MT
Lounge: 742-4653 • Office: 742-4654
Open From 10am - 2am

SIDNEY HEALTH CENTER
Exceptional Care for Life

Hospital • 216 14th Ave SW
Phone: 406-488-2100

Extended Care • 104 14th Ave NW
Phone: 406-488-2300

HURLEY'S OILFIELD SERVICES

- Potable Water • Loaders
- Communications
- Backhoe • Trucking
- Skid Houses • Porta Potties

Dispatch: 701-844-1234
Fairview, MT

LYREC
LOWER YELLOWSTONE RURAL ELECTRIC COOPERATIVE

Follow Us On Social Media!

3200 W Holly St • Sidney, MT
488-1602 • www.lyrec.com

It's All About Saying Goodbye

FULKERSON STEVENSON FUNERAL HOME

315 Second St. NW
Sidney, MT 59270
406-488-2805
email: ffh@fulkersons.com
www.fulkersons.com

Delmar Rink Construction

Keene, ND
701-675-2700

"We Put Value On The Line"

Sheridan Electric

Medicine Lake, MT
406-789-2231

of Williston

Your Locally Owned & Operated Beverage Specialist

701-572-6746

NEU CONSTRUCTION, INC.

- Oil Field Roads & Locations
- Reclaim Work
- Gravel & Scoria Hauling

Fairview, MT
406-742-5549
neuconst@midrivers.com

TRIPLE DISPOSAL
776-2500
SAVAGE, MT

Jim & Rebecca Miller

Tid County Implement

2429 W. Holly St.
406-488-4400

Miller's Garbage Service

Savage, MT
406-776-2334

Roundup

A DARN GOOD LITTLE NEWSPAPER!

Sidney, Montana
406-433-3306

Savage Volleyball

Savage's setter Taryn Hagler sets the ball in Bainville on Friday. The Warriors defeated Wibaux Thursday and Bainville Friday to start their volleyball season. (Photo by Bill Vander Weele)

Letter to the Editor

Dear neighbors,

It's summer in Richland County. Like you, my days are filled with sunburns, hard work, and spending time outside with loved ones. However, as your local librarian, there is one pressing topic that I would like to visit about with you: the 2020 Census. I know there is a lot going on right now and the census is easy to overlook, but the stakes are too high to do that, and our community has too much to lose if we don't act quickly.

Right now, only 51.9% percent of Richland County residents have responded to the Census – that puts us at 20 out of 56 counties. Census efforts in rural Montana were significantly impacted by the COVID-19 shutdown and that means it is up to us to get every single Richland County resident counted. This year it's easier than ever to respond – you can even do it on your cell phone.

Our county has a lot at stake during this census cycle – school funding, highway dollars, voting districts, emergency services, and business grants are all based on census data. The amount of federal dollars our local county government receives depends on our population, and our population is determined by census responses – each person not counted represents \$20,000 in missed funds over the course of the next decade. We can't afford to miss one single resident this year.

A rural community like ours has enough challenges these days. Imagine if a sizable portion of our population wasn't counted just because our neighbors didn't bother to respond to the census? What would be lost from our community fabric? How much more might you have to pay on your property taxes to backfill our school and road maintenance budgets? What would your kids miss out on if our schools and libraries are underfunded for the next ten years? What would it be like to have more legislators from other communities far away representing us in Helena and Washington, DC? Richland County is a special place for so many reasons, and we want to keep it that way. Responding to the census ensures that we get our fair share of funding to support our community.

On Aug. 11 census workers started door-to-door visits to households that have not yet responded – save yourself a visit by completing your census online or by phone right now at 1-844-330-2020 or www.my2020census.gov.

Do it for your neighbors, for your pocketbook, for our schools, roads, healthcare centers, and for the quality of life we all enjoy.

Be a good neighbor. Step up for our community today and complete the 2020 Census!

Sincerely,
Kelly Reising,
Sidney-Richland County Library Director

Richland County Transportation Is Open To Everyone!

Ride to work, doctor, grocery store, swimming pool & so much more

Call 433-RIDE (7433)
Reduced rates for advanced reservations

Follow us on for any changes or cancellations

THE BUSINESS ROUNDUP

Reach 26,500 Readers in the Entire MonDak Region

Call: 406-433-3306 or email: info@roundupweb.com

visit www.roundupweb.com/directory for direct links to company websites & locations

\$25⁰⁰ WK

NICK JONES REAL ESTATE
TRUCK ROUTE SOUTH, SIDNEY
OR CONTACT ONE OF OUR AGENTS:

Justin Jones 406-480-9525
Jerrian Franzen 406-478-3773
Dennis Wick 406-480-1550

www.NickJonesRE.com

Signs OF SIDNEY

Signs • Banners
Vehicle Lettering
Vinyl Letters
Location Signs
Decals
with High Tack Option

224 6th St. SW, Sidney • 406-433-2476 • signsofsidney@midrivers.com

• Gift Bouquets • Tuxedos • Balloons

• Fresh Made Flavored Popcorn

• Holiday & Solid Tableware

PARTY CENTRAL & MAIN STREET POPCORN

105 E Main • Sidney | 406-433-4386

High Caliber Sports & Athletics

One Location To Serve You Better!

440 N Central Ave • Sidney, MT
Shops at Fox Run | 406-433-1800
Mon-Sat: 9am - 6pm • Sun: 10am - 4pm
www.highcalibersportsinc.com

Network • Automation • Smart Home • AV Solutions

ELECTRICLAND

225 2nd Ave NE • Sidney, MT | Mon - Fri: 9am - 5pm | 406-433-4370

DOORBUSTN
Portables & Septic Service, LLC

Office: (406) 433-7586
Fax: (406) 433-7596
Service: (406) 489-0915

- Portable Toilet Rentals
- Septic Pumping & Installation
- Jetting Frozen Sewer Lines
- Snake Jobs
- Camera-Locate Sewer Lines
- Pipe Burst Sewer Lines (eliminates digging up entire yard)
- Troubleshooting

Blaine Rogers – Owner | PO Box 1003 | 34980 Hwy 23 • Sidney, MT

Sidney LUMBER

Mon-Fri: 8am - 3pm
1420 5th St SW • Sidney, MT
406-433-7767 • By Appt: 406-489-1880

WE WILL NOW CONTRACT YOUR ENTIRE JOB!

FOX HILLS GOLF COURSE

701-842-2074 | 3104 4th Ave. NE | Watford City, ND

New 18-Hole Course:

- 12-Playable: now open
- Driving Range: now open
- Fox Hole Restaurant: open daily 11am - 10pm

Catering Available! Contact us to book parties, banquets, weddings, receptions, corporate meetings, etc.

Border
STEEL & RECYCLING, INC.

Sidney: 35002 CR 123 • 406-433-7737
Glendive: 2703 W. Towne St. • 406-377-4398
Plentywood: Hwy 16 East • 406-765-2624

Williston: 13896 W. Front St. • 701-572-5493
Miles City: 12 Peggy Lane • 406-874-7428

Customer Service is Our #1 Priority

Farm & Ranch, Oil Field & Construction Materials, Fencing Supplies, New Steel, Pipe, Aluminum & Stainless

Back To School Safe Driving Tips For Teens

Submitted by Injury Prevention Specialist, DUI Task Coordinator Don Smies

Earning a driver's license is an exciting time in any teen's life. Soon, you'll be thinking about graduation, college, and careers. We at the Richland County Health Department Injury Prevention and DUI Task Force, want to help make sure you get through one of the major milestones in your life. We're teaming up with NHTSA, to encourage teen drivers to follow the rules of the road while behind the wheel driving back to school.

We know you're excited to have the keys in hand after all these years, but we really want to take this time to talk about the importance of safe driving habits and of following the law. Teens, your parents play an important role in helping you take smart steps to stay safe on the road, but ultimately it's up to you to make the right decisions behind the wheel. The following five rules are a great starting point, helping you become a safer driver.

1. Don't drive impaired. If you are under age 21, it's illegal for you to drink alcohol, and it's illegal for you to drive after drinking alcohol. Did you know that in 2017, 15% of teen drivers involved in fatal crashes had alcohol in their system? But alcohol isn't the only substance that can keep you from driving safely: Marijuana, like other drugs, affects a driver's ability to react to their surroundings. Driving is a complex task, and marijuana slows reaction times, affecting the driver's ability to drive safely. Remember that alcohol and drugs, (illegal, prescription, or over-the-counter) impair

driving and have deadly consequences.

2. Buckle Up - Every trip, every time, everyone, front seat and back. Your seat belt is designed to keep you safe in a crash, but only if you're wearing it. You should always buckle your seat belt, whether you're sitting in the front seat or back, no matter how long or short the trip. In 2017, there were 539 passengers killed in vehicles driven by teen drivers, and more than half (60%) of those passengers who died were not buckled up at the time of the fatal crash. Even more troubling, when the teen driver was unbuckled, 87% of the passengers killed were also unbuckled. Before you start driving, buckle your seat belt and check to make sure your passengers are wearing theirs, too. It's a simple task that could save your life.

3. Eyes on the road, hands on the wheel, all the time. It's tempting to answer a text or check your social media while driving, but those few seconds that you take your eyes off the road could be your last. If you think that your cell phone is your only distraction, you're wrong. Other passengers, audio, climate controls, eating or drinking while driving are all examples of dangerous distracted driving.

4. Follow the posted speed limit. Speed limits aren't just suggestions; they are there to keep you safe. In 2017, more than one-quarter (27%) of teen drivers of passenger vehicles involved in fatal crashes were speeding at the time of the crash. Remember to always drive within the speed limit; it could be what saves you from a deadly crash.

5. Passengers. Driving your friends to school may seem like a good idea, but it's not. Per data analyzed by NHTSA, teen drivers were 2.5 times more likely to engage in one or more potentially risky behaviors when driving with one teenage passenger, when compared to driving alone. The likelihood of teen drivers engaging in risky behaviors triples when driving with multiple passengers. If you have a provisional driver's license, be sure you are aware of the restrictions on your graduated driver licensing laws regarding transporting passengers, driving at night, and other key safety areas.

We know you're probably hearing a lot of messages from your parents about things they want you to do, but the message about safe driving could save you and your friends' lives. There's a reason your parents are so strict when it comes to you getting behind the wheel. Surveys show that teens whose parents set firm rules for driving typically engage in less risky driving behaviors, and are involved in fewer crashes.

Now that you know the most important behaviors to follow to keep yourself safe, be sure to follow them every time you drive.

If you have any questions, need some additional information on teen drivers or would like to be a member of the Injury Prevention/DUI Task Force please contact Don Smies, coordinator 406-433-2207. Check us out on Facebook, www.facebook.com/RichlandCountyHealthDepartment or on Live Stories, <https://insight.livestories.com/s/v2/dui-injury-prevention-task-force/e5038097-8a98-4fa0-8c03-d4360a6f815d>.



HOT Summer Deals

ON USED FORD ESCAPES

#6539

2017 FORD ESCAPE TITANIUM
65,340 miles | Ruby Red

#6540

2016 FORD ESCAPE TITANIUM
91,970 miles | Sunset Metallic

#6544

2020 FORD ESCAPE TITANIUM
3,700 miles | Velocity Blue

#6545

2020 FORD ESCAPE TITANIUM
4,222 miles | Sedona Orange

"Experience the Eagle Country Difference!"

215 East Main • Sidney, MT | 433-1810 or 1-800-482-1810 | eaglecountryfordsales.com

NWNDCF Relief Fund Grants Total \$97,000

Submitted by Megan Laudenschlager, Strengthen ND Williston - The Northwest North Dakota Community Foundation (NWNDCF) has awarded grants from the Relief Fund to organizations supporting human services and access to food in Williams, Divide, McKenzie, and Mountrail counties as a result of COVID-19 and energy industry pressures. This grant allocation brings the total committed from the Relief Fund to \$97,000.

The most recent grant awards total \$12,000 and reflect the priorities of human services support and health and safety:

- \$2,000 to the Family Crisis Shelter: Funds will be utilized to pay for hotel rooms for women and children in NW North Dakota so they may escape domestic violence.
- \$10,000 to Williston Schools: Funds will be utilized by schools in District #1 and #8, as well as St. Joseph's Catholic School and Trinity Christian School, to purchase and provide personal protective equipment for students and much-needed classroom supplies.

Tom and Cheryl Powers made the gift of \$10,000 possible, through a pass-through gift to the NWNDCF Relief Fund.

"We are grateful for the support of northwest North Dakota residents like Tom and Cheryl Powers," remarked Ward Koeser, NWNDCF Board of Directors President. "It is through the area's generosity, like that displayed by the Powers family, that the Community Foundation is able to serve as a vehicle to meet the needs of northwest North Dakota's communities."

Organizations and community groups working to meet needs created by the COVID-19 pandemic and recent economic pressures are invited to submit an application for funding to support their cause. Applications are reviewed on a monthly basis.

Individuals and businesses seeking to support the NWNDCF Relief Fund can donate online at www.NWNDCFCommunityFoundation.org or by sending a check to: NWNDCF, PO Box 371, Williston, ND 58802-0371. All gifts to the NWNDCF Relief Fund are tax deductible.

NOW AVAILABLE AT

PIZZA HOUSE

— BYOB —
BUILD YOUR OWN
BUCKET

Minimum of a \$6 savings!
Choose from any of our bottled/
canned alcoholic beverages.

**710 S Central Ave
Sidney, MT
406-433-1971**
Tues-Thurs: 11am - 9:30pm
Fri-Sun: 8am - 9:30pm

PROFITABLE EAGLE RV PARK AUCTION

WITH REAL ESTATE & HOUSE

SUNDAY, SEPTEMBER 13, 2020
1:00 P.M. AT LOCATION

LOCATION: SIDNEY, MT-- From the Town Pump take Highway 16 S for 2.8 miles
OWNERS: BOB & PATTY GARNER • FOR MORE INFORMATION & SHOWINGS: RICK 406-485-2548 OR 939-1632
Please check out: eaglervparkmt.com

Physical Address:
12019 Hwy 16, Sidney, MT

PROPERTY DESCRIPTION: 6.35 +/- Acres S19, T22 N, R59 E, M & B TRACT IN LOT 4 SEE BKA104/227

R V & HOUSE INFORMATION: The RV Park was built in 2011, is open year around and can manage 40 units of any size. Paved Road, Full hookups, Clean Water, Laundry, Private Bathrooms, Private Showers, Wi Fi Service

The house is 3950 sq ft, 5-bedrooms, 3-baths, RO system (3) car garage (40x30) attached, meat locker, 16x32 barn, 32x32 sheep barn, (2) Wells 1-for House & 1-for RV Park.

THE FINAL BIDS WILL BE SUBJECT TO THE OWNER'S

APPROVAL: THE OWNER'S RESERVE THE RIGHT TO ACCEPT OR REJECT ANY AND ALL BIDS ON THE REAL ESTATE.

A title commitment has been ordered and will be available, at their request, to prospective buyers for inspection prior to sale day. The above may or may not be the proper legal description; it was taken from the Richland County tax receipts. The above does describe the property to be sold.

Water Rights: All water rights held will transfer.

Taxes: Taxes will be pro-rated from the day of closing.

Title Insurance: Standard owners' title insurance will be provided by the seller through Richland County Title, 1050 S Central, Sidney, MT 406-433-8584

Terms: Cash, 10% down sale day, the balance due at closing approximately 30 days from the Auction at the offices of Richland County Title, 1050 S Central, Sidney, MT 406-433-8584

Buyer's Premium on Real Estate Only: A 2 % Buyers premium will be added to the winning bid price to arrive at the total contract price paid by the purchaser.

Your bid is considered acceptance of the terms of this auction. If you, the Buyer fails to close, the down payment is non-refundable. If the Sellers fail to close, 100% of the down payment will be returned. At this time, there is no known reason that the Sellers would not be able to close. All funds are held in the escrow account of Richland County Title, 1050 S Central, Sidney, MT 406-433-8584.

All information is from sources deemed reliable but, is not guaranteed by the Sellers or the Auctioneers. Offering is subject to error, omission, and approval of purchase by owner. We urge independent verification of each, and every item submitted to the satisfaction of any prospective buyer. It is every potential bidder/purchaser's sole responsibility to accomplish his or her due diligence in whatever manner he or she deems advisable. Announcements made sale day take precedence over any printed materials. The property sells "As is-Where is." RK Statewide Auction Service and its auctioneers are acting solely as auctioneers for the seller.

FOR MORE INFORMATION:
RICK KNEPKAMP, R-K AUCTION
406-485-2548 or 406-939-1632

AUCTIONEER'S NOTE:
This R V Park is a great opportunity to buy an income producing property. It is a first-class property with "state of the art" R V hook-ups. There is a beautiful spacious home on this property. The Sellers are ready to retire and are very motivated to sell, so you do not want to miss this opportunity. Hope to see you on SUNDAY, September 13th. ~Rick

RK
Rick Kniepkamp
STATEWIDE AUCTION (406) 485-2548

WE SELL & ADVERTISE ACROSS THE UNITED STATES
www.r-kauction.com
Rick Kniepkamp (406) 485-2548 or cell (406) 939-1632

All information is from sources deemed reliable but, is not guaranteed by the Sellers or the Auctioneers. Offering is subject to error, omission, and approval of purchase by owner. We urge independent verification of each, and every item submitted to the satisfaction of any prospective buyer. It is every potential bidder/purchaser's sole responsibility to accomplish his or her due diligence in whatever manner he or she deems advisable. Announcements made sale day take precedence over any printed materials. The property sells "As is-Where is." RK Statewide Auction Service and its auctioneers are acting solely as auctioneers for the seller.

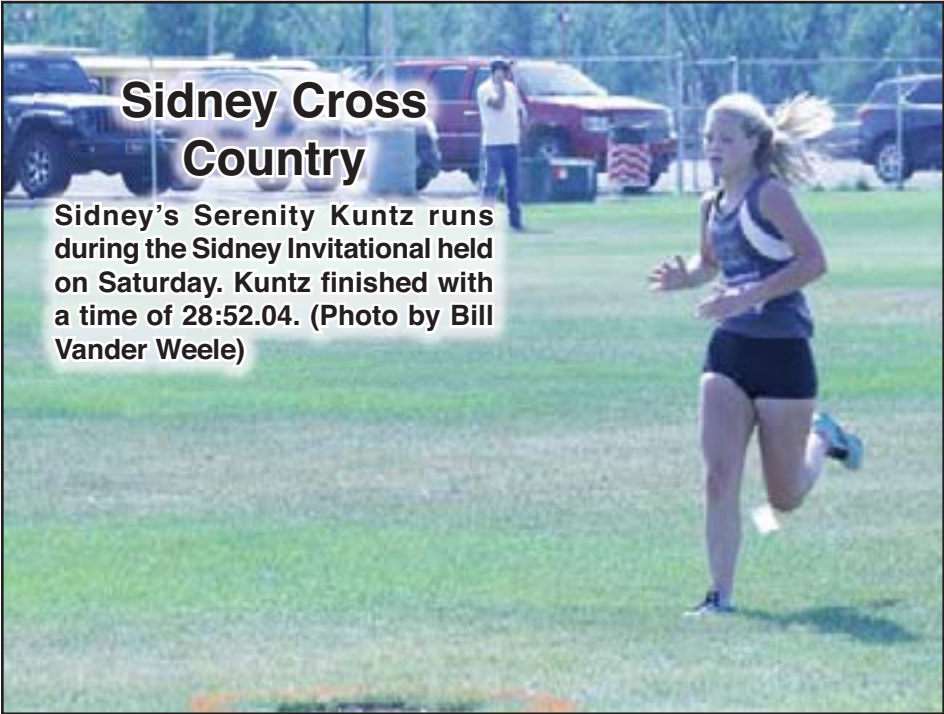
SLA RIVER PRINTING • SIDNEY, MONTANA

Census Rapid Response: Aug. & Sept. Activities

The 2020 Census closes Sept. 30, 2020. Leading up to that time, the the McKenzie County Complete Count Committee (<https://www.countmckenzie2020.com/>) has been working to count everyone. The August events the Rapid Response Team was present at, Fun Fest and the first five weeks

of the Farmers Market, counted over 80 households. That estimates to over \$1.5 million in additional federal program revenue to the community over the next ten years!
In addition to the August events, the Rapid Response will be at the final Watford Market, Sept. 3 and at Cash-

wise Foods on Friday, Sept. 11 from 4-7 p.m. and Sept. 18 from 4-7 p.m..
If you have not yet completed your 2020 Census online, please do so now. It is very easy and takes five minutes: <https://my2020census.gov/>



Sidney Cross Country
Sidney's Serenity Kuntz runs during the Sidney Invitational held on Saturday. Kuntz finished with a time of 28:52.04. (Photo by Bill Vander Weele)

MORE GOOD USED FURNITURE JUST ARRIVED!

Closets • Dressers • 3 Twin Beds
4 Night Stands • Small Desk • Couch & More!



HUNTERS



Locking Gun Cabinet
holds 8 guns plus drawer for ammo



Elk Head
great decoration piece

Watch for "assistance" signs on door

YELLOWSTONE Marketplace

406-489-1945 • 102 N Central Ave • Downtown Sidney



SAFETY FIRST, ADVENTURE SECOND.

Explore with care and help slow the spread of COVID-19 in Montana.



WEAR A MASK



MAINTAIN SOCIAL DISTANCE (AT LEAST 6 FT. APART)



WASH YOUR HANDS & USE HAND SANITIZER



AVOID TOUCHING YOUR FACE



COVER COUGHS & SNEEZES




THANK YOU FOR HELPING KEEP RESIDENTS & VISITORS SAFE.


VISITMT.COM

MONTANA

GET YOUR WHEELS READY FOR... Labor Day Travels



DYNAPRO AT2





TOYO AT III



WE DO MORE THAN JUST TIRES:

• Brakes • Shocks • Struts • Alignments • Oil Changes





- Straight Talk
- Honest Service
- Fair Prices



1601 S Central Ave • Sidney, MT | 433-3858 | Mon-Fri: 7am - 5:30pm