

# The Roundup

PRSRT STD  
U.S.  
POSTAGE  
PAID  
The Roundup

(406) 433-3306 or 1-800-749-3306  
Fax (406) 433-4114  
e-mail address:  
info@roundupweb.com  
www.roundupweb.com

Business Office:  
Located at 111 West Main  
Sidney, MT

Mailing Address:  
P.O. Box 1207  
Sidney, MT 59270

PRSRT STD  
ECRWSS  
U.S. POSTAGE  
PAID  
EDDM RETAIL

Local  
Postal Customer

Wednesday, December 24, 2014

Volume 40 • Number 45



## Fairview Elementary Christmas Program

Fairview K-5<sup>th</sup> grade presented a delightful Christmas program Tuesday, December 16.

Left: Santa made a surprise visit at the end of the program. Receiving a candy cane from Santa are, L to R, Jaxon Turcotte, Michaela Gosselin and Mkenzi Lustig.

Below: Fairview's kindergarten class entertained the audience with three numbers. Pictured are front row, L to R, Mayzee Molloy, Kyra Umback, Karlee Nay, Taylor Paulin, Kyle Skogas, Paige Emly, Nellie Cotton. Back row, L to R, Grant Knapp, Elliot Thompson, Caiden Morley, Hailey Vincent, Brandin Stern, Adi Baxter and David Arbogast.

## Moreno Resigns at Fairview School Board Meeting

At the December meeting of the Fairview School board, Principal Ruben Moreno resigned his position effective June 30, 2015 after Superintendent Luke Kloker recommended that his contract not be renewed, without cause.

In his statement, Moreno took full responsibility for, and defended, his actions which led up to him being placed on paid administrative leave by Kloker on September 10, 2014.

He said he would not look the other way and allow nepotism, bullying, intimidation, harassment, verbal or physical abuse or discrimination against children, student/athletes, staff, teachers, community members or himself. "As a coach, educator and administrator, I have a moral obligation to serve and protect my students, staff, teachers and community."

Moreno also stated that as an employee of the district he was denied his right to executive or open session by the superintendent. "A complete accounting of events would have allowed me to tell the school board my side of the story at the September 9 board meeting."

In the letter from Kloker, Moreno was not allowed on school property without asking permission. In an interview, Moreno said he resented having to ask for permission to attend District activities, especially those his daughter is directly involved in.

Negotiations involving his resignation had been taking place over the past few months. Moreno said he was offered multiple settlement opportunities with less salary and changes in housing status. Negotiations were completed Monday, December 15 at the board meeting between attorneys.

Superintendent Kloker did not return a call for comments by press time.

## Sidney Chamber Banquet January 19

All community members are welcome to Sidney's Chamber of Commerce Annual Banquet at the Sidney Country Club on January 19<sup>th</sup>, 2015. Join us as we highlight our volunteers and businesses and give you a preview of what to expect in 2015! Join the Sidney Chamber and be a part of the difference. For more information call 406-433-1916 or 406-433-1127.

MNAXLP



The second grade class presents "You're a Mean One Mr. Grinch" Pictured are front, L to R, Kynlee Turcotte, Brady Selting, Sydnee Jolma, Tristian Adams and Trevor Croucher. Back row, L to R, are Wyatt McPherson, Gabe Callendar, Gavin Callendar, Jameson Goerke, Michael Elmer, Ayva Moreno, Jessica Turnbow, Katie Bradley and Deacon Gackle.



## MonDak Ag Days and Trade Show Jan. 16<sup>th</sup> and 17<sup>th</sup>

The MonDak Ag Days and Trade Show is shaping up to be a great experience for 2015 with the Ringling 5 performing and plenty of presenters for all interests Friday and Saturday. The banquet will be held Friday, January 16<sup>th</sup>.

Some presenters for Ag Days include: Rachel Endecott, Extension Beef Specialist, speaking on EPDs in beef cattle, Leon Osborne presenting next growing season's weather outlook, and a member of the FSA Office will hold a discussion regarding the new farm bill.

The trade show still has open booths to fill and wants to expand their trade show to include more interests! All interested parties are welcome to apply for a booth- including those interested in presenting in home and garden specialties or any others. You are welcome to contact the Richland County Extension Office at 406-433-1206 for more info.

All are welcome to come and learn January 16<sup>th</sup> and 17<sup>th</sup> at the Richland County Fair Event Center! Keep up to date on news regarding MonDak Ag Days in future issues of The Roundup and on the Facebook page for MonDak Ag Days at [www.facebook.com/mondakagdays](http://www.facebook.com/mondakagdays).



The Ringling 5





**Janet Sergent**  
Real Estate  
Loan Officer  
NMLS ID# 525727

**REAL ESTATE FINANCING**  
For Home Purchases & Refinancing  
Stop in today and see Janet Sergent in Sidney



**Richland**  
FEDERAL CREDIT UNION

www.richlandfcu.com  
201 West Holly St. • Sidney, MT (406) 482-2704  
18 East 2nd St. Culbertson, MT (406) 787-5890

**For all your Farm/Ranch, Recreational, Residential, and Commercial needs.**



**Alan Seigfreid**  
**Amanda Seigfreid**

**Jim & Janice Knudsen** 120 2nd St. N.E. • Sidney Mt. 59270  
**Broker/Owners** (O) 406-433-3010 • (C) 406-489-3010  
email: alans@midrivers.com  
**Website: www.missouririverrealty.com**



**Yellowstone Chiropractic Clinic**  
(406)-433-4757 222 2nd. Ave. SW  
1-866-433-4757 Sidney, MT 59270



**Dr. Ryan Laqua**  
Chiropractic Physician &  
Certified Medical Examiner

• Sports Injuries • DOT Physicals  
• Personal Injuries & Pain Conditions



**The Roundup**

**Do you have news or photos from McKenzie County you would like in The Roundup?**

**CONTACT:**  
Kathy Taylor in Watford City  
701-842-6188

**AREA RECOVERY GROUPS**

**MONDAYS:**  
**Noon** — AA Group Trinity Lutheran Church Ed. bldg., 214 S. Lincoln Ave, Sidney.  
**6 p.m.** — Al-Anon, Trinity Lutheran Church Ed. bldg., 214 S. Lincoln Ave, Sidney.  
**7 p.m.** — Fairview Alive and Kicking at Faith Alliance Church, 704 S. Western Ave.  
**8 p.m.** — AA Group, Northern Pump & Compression, Watford City. Call 770-3603 or 770-2675 for directions or ride.

**TUESDAYS:**  
**7 p.m.** — AA Group Trinity Lutheran Church Ed. bldg., 214 S. Lincoln Ave, Sidney.

**WEDNESDAYS:**  
**5:00 p.m.** — Sober Life Young People's NAAA 12- step recovery group, 25 yr. old & younger, Trinity Lutheran Church Ed. bldg., 214 S. Lincoln Ave, Sidney.  
**8 p.m.** — Al-Anon, Sanford Room, McKenzie Co. Public Library, Watford City.

**THURSDAYS:**  
**7 p.m.** — NA meeting, MonDak Trucking office Bldg., 725 W. Holly, Sidney.  
**8 p.m.** — AA Group, Northern Pump & Compression, Watford City. Call 770-3603 or 770-2675 for directions or ride.

**FRIDAYS:**  
**noon** — AA, Trinity Lutheran Church Ed. bldg., 214 S. Lincoln Ave, Sidney.  
**6:30 - 7:30 p.m.** - 5 Stones faith based recovery meeting, Sidney Nazarene, 606 9th St. SW, Back door is open.  
**7 p.m.** — Fairview Alive and Kicking at Faith Alliance Church, 704 S. Western Ave.  
**7 p.m.** — **Watford City area Celebrate Recovery**, Assembly of God, 2117 S. Main. For help call Robert 417-296-2809 or Stephanie 417-296-2810.  
**8 p.m.** — AA meetings, Trinity Lutheran Church Ed. Bldg, Sidney.

**SATURDAYS:**  
**7P.M.** — AA 24 hour group, Northern Pump & Compression, Watford City. Call 770-3603 or 770-2675 for directions or ride.  
**9 a.m. & 7 p.m.** — AA Group Trinity Lutheran Church Education bldg., 214 S. Lincoln Ave, Sidney.

**SUNDAYS:**  
**7 p.m.** — AA Group Trinity Lutheran Church Ed. bldg., 214 S. Lincoln Ave, Sidney

**STATISTICS**

**LAKE WATER LEVEL REPORT**

	<b>Sakakawea</b>
Current Elevation.....	1840.6
Last Week's Elev. ....	1840.7
One Year Ago .....	1833.5
Release For Day (C.F.S.) .....	16,000

**SIDNEY WEATHER DATA**

Source: MSU Eastern Agricultural Research Center

Date	High	Low	Precip.
Dec. 15 .....	28 .....	24 .....	0.00
Dec. 16 .....	24 .....	19 .....	0.00
Dec. 17 .....	23 .....	18 .....	0.00
Dec. 18 .....	31 .....	19 .....	0.00
Dec. 19 .....	43 .....	16 .....	0.00
Dec. 20 .....	46 .....	16 .....	0.00
Dec. 21 .....	29 .....	17 .....	0.02
Total YTD Precipitation .....			13.79

# OBITUARIES Christmas Cash Winners

## Clifford R. Lamphier, 89, Sidney, MT

Funeral services for Clifford Lamphier, 89, of Sidney, Montana were at 2:00 p.m., Saturday, December 20, 2014 at Peoples Congregational Church in Sidney with Pastor Neil Lindorff officiating. Interment took place in Richland Memorial Park Cemetery under the direction of Fulkerson Funeral Home of Sidney. In lieu of flowers, donations may be made to the American Legion, VFW Club of Sidney, or the NRA. Remembrances, condolences and pictures may be shared with the family at [www.fulkersons.com](http://www.fulkersons.com). Clifford passed away peacefully at his home on December 12, 2014 surrounded by family and holding Mom's hand.

## Barbara E. Olson, 82, Bridger, MT

Funeral services for Barbara E. Olson, 82, Bridger, MT formerly of Sidney, MT were at 10:00 a.m., Saturday, December 20, 2014, at the Assembly of God Church in Sidney, MT with Pastor Les Anderson officiating. Interment was in the Sidney Cemetery, Sidney, MT under the direction of Fulkerson Funeral Home of Sidney, MT. Remembrances, condolences and pictures may be shared with the family at [www.fulkersons.com](http://www.fulkersons.com). Barbara E. died on Saturday, December 13, 2014, at her daughter's home in Bridger, MT.

## David Thiel, 66, Sidney, MT

Funeral services for David Thiel, 66 of Sidney, MT were at 10:00 a.m., Monday, December 22, 2014 at Assembly of God Church in Sidney, MT with Pastor Pat McWilliams officiating. Interment took place in Sidney Cemetery, Sidney, MT under the direction of Fulkerson Funeral Home. Remembrances, condolences and pictures may be shared with the family at [www.fulkersons.com](http://www.fulkersons.com).



David Thiel

David Charles Thiel, husband extraordinaire, rest now my love. David Charles Thiel was born to Charles Leroy Thiel and Lillie Ann McCoy Thiel in Sidney, MT on July 27, 1948. David's outlook and religion were very simple: Jesus died for my sins, I accept him. End of story. David's marriage of 43 years to Patti Jo Watson Thiel started on bended knee with the declaration: "You are the only girl I have ever met who is good. Marry me." She did, January 23, 1972. As a child, David and Frank Gurney often played hooky to go fishing in the Yellowstone River. David's favorite sport, "laughing", thanks to all you coffee shop buddies and waitresses. You know your names. David's niece said that David was a gifted man who used every gift that he was given to live his life. I know that when he entered heaven God cheered. David's activities included: fishing, boating, hunting, long-range shooting, dog and horse training, carving gun stocks, and cabinet making. David built his own house, too. David worked seasonally with his Father Chuck and Uncle Stan from age 12 to 1978 doing hot tar roofing, where they nicknamed him tarbaby. At age 17, he worked doing seismography with two companies including with Dale Erikson for one or two winters. Then, he worked at the Holly Sugar factory for five or six seasons. He worked for Bill Smelser at Pacific Hide and Fur skinning furs for two years in the winter. In 1978, he co-founded Sticka and Thiel Construction. In 1986, he founded Sidney Roofing and Concrete. His son Patrick joined him in business when he was a teen. David encouraged his son to form his own business in 2003, where they partnered together until today. David died on Tuesday morning, December 16, 2014 at the Sidney Health Center in Sidney, MT.

David is survived by honored mother Lillie Ann Smith of Butte, MT; siblings, Donna Stephenson of Butte, MT, Dudley Thiel of Sidney, MT, Charles Thiel of Bozeman, MT, and Chester Thiel of Bozeman, MT; three children: Stephanie (Andrew) of Montgomery, NY, Patrick of Sidney, MT, and Shyla of Northeast, PA; foster son, Adam Barnett of Butte, MT. David had eight grandchildren: Joel (Allison), Cassandra, Mitchell, Daniel, Aydan, Kara, Tiffany, and Emily. David is preceded in death by father, Charles Thiel; and sister, Marcy Oliver. MNAXLP

# No Family This Christmas? Join Ours!

The Fairview Alliance Church welcomes local residents and visitors to a free Christmas Eve dinner Wednesday, December 24, from 4:30 to 6:00 p.m. Our desire is to include those who may be away from their families this season, but everyone is welcome. Enjoy good food and fellowship, with simple activities for children and a candlelight carol service to follow at 6:30 p.m. Don't spend the holidays all alone. Please join us at 702 Western Avenue, across from Fairview High School. Call Pastor Kelly Sloan at 406-742-5425 for more information.

# Hunter Education Classes in 2015

Submitted by the North Dakota Game and Fish Department

Students interested in taking a hunter education class in 2015 should visit the North Dakota Game and Fish Department website at [gf.nd.gov](http://gf.nd.gov) for a statewide list of courses. Many classes will be added over the next several weeks, and the rest will be added throughout the year as they are finalized. To register, click on the online services tab, and "online course enrollment" under the hunter education heading. Classes are listed by city, and can also be sorted by start date. To register for a class, click on "enroll" next to the specific class, and follow the simple instructions. Personal information is required. Those who do not have access to the Internet and want to sign up for a class can call the hunter education program in Bismarck at 701-328-6615. Individuals interested in receiving a notice by email when each hunter education class is added can click on the "subscribe to news, email and text alerts" link found below the news section on the department's home page. Check the box labeled "hunter education class notification" under the education program updates. State law requires anyone born after December 31, 1961 to pass a certified hunter education course to hunt in the state. Hunter education is mandatory for youth who are turning 12 years old, and children can take the class at age 11.

# Coyote Catalog Available for Hunters, Landowners

Submitted by Marissa Eberling  
Sidney Chamber of Commerce

Our Christmas Cash winners for \$250.00 are Barb Connor and Courtney Hill; our \$500.00 winner is Tony D'Amico. A huge thank you to our sponsor The Lone Tree Gun Show for making the Christmas Cash Giveaway possible. We also want to thank all of the businesses that participate in accepting the Chamber Bucks Program.

Submitted by the North Dakota Game and Fish Department

The Coyote Catalog, a statewide effort connecting coyote hunters and trappers with landowners who want fewer coyotes in their areas, has been reopened by the North Dakota Department of Agriculture and the North Dakota Game and Fish Department. "I encourage landowners, especially farmers and ranchers who have problems with coyote depredation, to sign up for the Coyote Catalog," said Agriculture Commissioner Doug Goehring. "Hunting and trapping are valuable tools in managing these predators."

This past season, 74 landowners signed up for the Coyote Catalog, a more than 50 percent increase over the previous year. Nearly 900 hunters and trappers also signed up. NDGA officials estimate livestock producers in North Dakota lost more than \$1 million last year to coyotes. At the same time, coyotes are a popular furbearer species for hunters and trappers. "This can be a good way for hunters and trappers to locate new places to go," said Game and Fish Director Terry Steinwand. "We've also had some positive feedback from landowners as well."

Goehring and Steinwand said the U.S. Department of Agriculture Wildlife Services should be the first contact for landowners experiencing coyote depredation of livestock. Landowners can sign up on the NDGA website at [www.nd.gov/ndga/coyote-catalog](http://www.nd.gov/ndga/coyote-catalog). Required information includes county and contact information. Hunters and trappers can sign up at the NDGF website, [gf.nd.gov](http://gf.nd.gov). Throughout the winter, hunters or trappers will receive information on participating landowners, and they can then contact landowners to make arrangements. Anyone who registered for the Coyote Catalog in the past must register again to activate their names on the database. The Coyote Catalog will remain active through March 31, 2015. For more information, contact Stephanie Tucker, NDGF, at 701-220-1871; [satucker@nd.gov](mailto:satucker@nd.gov); or Jamie Good, NDGA, at 701-328-2233 or [jgood@nd.gov](mailto:jgood@nd.gov).

**EVENTS**

**SEND US YOUR EVENTS!**  
THE ROUNDUP: PO Box 1207  
111 West Main • Sidney, MT 59270  
406-433-3306 • Fax: 406-433-4114 • Email: [classads@esidney.com](mailto:classads@esidney.com)

## RICHLAND COUNTY

Events in Sidney unless otherwise listed. MT Zone.

**Wed., Dec. 24th**  
**4:30 p.m. - 6:00 p.m.** - The Fairview Alliance Church welcomes local residents and visitors to a free Christmas Eve dinner. Our desire is to include those who may be away from their families this season, but everyone is welcome. Enjoy good food and fellowship, with simple activities for children and a candlelight carol service to follow at 6:30 p.m. Please join us at 702 Western Ave, across from Fairview High School.

**Thurs., Dec. 25th**  
**11:00 a.m. - 2:00 p.m.** - Sidney Knights of Columbus #3002 Annual Community Christmas Dinner. Held at St. Matthew's Multi-purpose Room, 310 7th St SE. Serving turkey, ham, and all the trimmings. Everyone is invited and volunteers are welcome! Free will offering. Please call 433-2510 for delivery.

**Thurs., Jan. 8th**  
**2:00 p.m.** - Richland Co. Injury Prevention/ DUI Task Force will have their quarterly meeting in the Community Service Building, 1201 West Holly, room 201. Priority item on the agenda is determining a 2015 action plan. All meetings are open to the public and community members are encouraged to get involved. The team's goal is educating and bringing awareness on safety for Richland County.

**Sun., Jan. 11th**  
**12:30 p.m. - 5:00 p.m.** - The First Lutheran Church of Savage will hold its annual Lutefisk and Meatball Dinner at the First Lutheran Church in Savage. Serving will be \$15 for adults and \$3 for children under 12.  
**2:00 p.m.** - Please join us as we welcome Montana's own Jonny Cash tribute band as they perform at the MonDak Heritage Center. The Cold Hard Cash Show is an original and innovative tribute to the music of Johnny Cash and The Tennessee Three! Fronted by guitarist and singer Merie Travis Peterson. The Cold Hard Cash Show brings to life classic Cash songs from the Sun & Columbia Records Catalogs to the modern American recordings, performing with the energy of the Live at Folsom and San Quentin albums with a sound so accurate you'd think you're listening to The Man in Black himself! The event is FREE to the public.

**Dawson County**  
Events in Glendive unless otherwise listed. MT Zone.

**Wed., Jan. 14th**  
**12:00 p.m.** - Please join Glendive's Friends of the Library for our January Lunch'n'Learn. Captain Mark Reddick, Miles City PD, Member of Montana Internet Crimes Against Children, will speak about "Scams and the Elderly, Internet Safety, and Internet Trends and Scams."

**Other Counties**  
Events unless otherwise listed. CT Zone

**Williams County**  
**Mon., Dec. 29th**  
**6:00 p.m.** - Monay night movie at Spring Lake Park "Frozen" hosted by the Spring Lake Park Lights Drive.

**Tues., Dec. 30th**  
**5:30 p.m. - 8:30 p.m.** - Visit from Frozen's Elsa and Live Reindeer Exhibit at Spring Lake Park! Sponsored by Spring Lake Park Holiday Lights Drive. MNAXLP

**View all monthly events on our calendar at:**  
**[www.roundupweb.com](http://www.roundupweb.com)**



# Fairview Centennial Rifle on Sale Through Dec. 31

MNAXLP



Submitted by Staci Miller

Fairview, MT, "the town too big for just one state", continues to celebrate 100 years. In recognition of the city's centennial, the Fairview Chamber and Fairview Festival Committee are offering an opportunity to purchase a limited edition Henry Big Boy .45 colt. The Historical Armory designed an engraved snapshot of the Fairview community including Brodhead Maternity Home,

Fairview Bridge, elevator, sugar beet, wheat, fishing & hunting and an oil rig.

The guns can be ordered via email at fairviewfestival@gmail.com or by mail by filling out an order form available at Merchants Bank in Fairview. The cost of the gun is \$1600.00 and is only available until December 31st, 2014. All orders must be paid in full prior to December 31st.

The proceeds of the rifle

sales will benefit Fairview projects through the Fairview Chamber and Fairview Festival committees.

**Roundup**  
**WEB.COM**  
Everything  
Roundup on  
the web.



## To Kathy's Many Friends:

As phone calls & sympathy cards continue to arrive, I am reminded more & more of the many lives Kathy influenced during her short time here & the impossible task of expressing our deep appreciation for the many months of calls, cards, gifts, food, support, best wishes & help coping during the time of her illness.

Seemingly without effort, Kathy impacted everyone she came in contact with – listening, with that lovely dimpled smile, helping, caring & touching everyone she met. I only knew her for a brief, totally delightful 15 years & was always amazed at her unlimited ability to exude love.

As a gesture of thanks, I will close by repeating some of your own written, often repeated description of her

"Beautiful, with her radiant cheery smile; a big-hearted angel who lit up the room with her twinkling eyes; a larger than life doll."

I will keep after the Thank Yous & apologize for the delay. In the meantime, I thank you – our whole family thanks you – & as you know already, Kathy thanks you.

– John & Terri, Gina, Chris, Allison, Jennifer, JJ & all our family

# Cattle·ac

**GIFT CARDS**  
**For Holiday**  
**Gift Giving!**

Gift Cards are Available in any Amount

May be Redeemed at the Cattle-ac AND the Rodlron Grill!

**COMING SOON**

**RODIRON**  
GRILL

520 N. Central Ave., Sidney

**406.433.7174**  
**119 N. Central Ave., Sidney**  
**www.cattleac.com**

# THROUGH IT ALL

As your life unfolds, change is waiting around every corner. That's why it's comforting to know, for nearly 75 years, Blue Cross and Blue Shield of Montana has been with you every step of the way. So when life calls, and you need us most, we're here for you...through it all.



**BlueCross BlueShield of Montana**

A division of Health Care Service Corporation, a Mutual Legal Reserve Company, an Independent Licensee of Blue Cross and Blue Shield Association.

LEARN MORE OR ENROLL TODAY at [BCBSMT.COM](http://BCBSMT.COM) | 855.765.1222

# 2014 BLOWOUT SALE!

REMAINING NEW 2014 VEHICLES WILL BE SOLD AT INVOICE

0% financing is available on select units. Check with sales staff on all rebate possibilities.

**Eagle Country Ford**

**ST# 3297**  
**ST# 3133**  
**ST# 3339**

Not all customers will qualify for max rebates, some may qualify for additional rebates. Must finance with Ford Motor Credit on some, some must have a trade-in, rebates may change.

STOCK NUMBER	VEHICLE	MAX REBATE
ST# 1134	2014 FUSION SE, FWD, WHITE	\$4,000
ST# 1146	2014 FOCUS SE HATCH, BLUE	\$3,500
ST# 1149	2014 FOCUS SE SEDAN, RUBY RED	\$3,500
ST# 3214	2014 EXPLORER SPORT, WHITE	\$2,000
ST# 3285	2014 TRANSIT CONNECT, WHITE	\$2,000
ST# 3006	2014 EDGE SEL, AWD, WHITE	\$3,500
ST# 3307	2014 EDGE LIMITED, AWD, SILVER	\$3,500
ST# 3339	2014 EDGE SEL, AWD, BLACK	\$3,500
ST# 3171	2014 F150 CC LARIAT, KOD/BR	\$4,000
ST# 3225	2014 F150 S/C LARIAT, GR/GEM	\$4,000
ST# 3233	2014 F150 CC LARIAT, BLUE JEANS	\$4,000
ST# 3293	2014 F150 CC LARIAT, RUBY RED	\$4,000
ST# 3296	2014 F150 CC LARIAT, PALE/ADO	\$4,000
ST# 3297	2014 F150 CC LARIAT, RUBY RED	\$4,000
ST# 3171	2014 F150 CC STX, SILVER	\$4,000
ST# 3133	2014 F350 CC KING RANCH, WHITE	\$5,000
ST# 3146	2014 F350 CC LARIAT, GR/GEM	\$5,000
ST# 3198	2014 F350 CC XLT, KODIAC BR	\$6,000

**"Experience the Eagle Country Difference!"**  
215 East Main • Sidney, MT | 433-1810 or 1-800-482-1810 | [eaglecountryfordsales.com](http://eaglecountryfordsales.com)



# Happy Holidays!

From Lowell, Charlie  
& the Gang at

## Arnegard Auto Sales & Charlie's Service

701-586-3552 • Hwy. 85 W • Arnegard, ND



We Wish You Happy Holidays From  
Granda Don & Grandma Debbie!

### ANDERSON VERMEER SALES

701-828-3358 or 701-828-3359 • Alexander, ND

# Season's Greetings!

## HAPPY HOLIDAYS!



From Laura & the Badlands Crew!

### BADLANDS HARDWARE

701-842-3321 • 104 N Main • Watford City, ND

Merry Christmas  
& Happy New Year!



### The Lineman's Christmas Eve

'Twas the night before Christmas  
And all through the house  
Not a creature was stirring  
Cause the power was out.  
How could this happen?  
How could it be?  
The house is all dark,  
Even lights on the tree.  
The lineman's asleep  
all cozy and warm,  
His power apparently  
Spared by the storm.  
Deep into slumber  
But soon to awake,  
Cause a tree on the line  
Has caused it to break.  
The calls swamp the office,  
"MY POWER IS OUT!"

Get them here quickly,  
cause I carry clout."  
The dispatcher calls  
With a hint of despair  
to tell the lineman  
The need for repair.  
In three or four hours  
The trouble is found:  
The road didn't pass  
Where the tree went down.  
Out in the snow  
They carry their tools  
And fix the fault  
As they learned in the schools.  
They leave the scene  
and drive back in the dawn.  
The line is now clear  
And all power is on.

And now it's the morning  
The kids shout with glee,  
Their eyes shining bright  
As the lights on the tree.  
The lineman is home now  
As tired as can be.  
The storm has ignored  
His Christmas Eve.  
He's not asking for praise  
Or for you to applaud,  
Cause according to him  
it's just part of the job.  
But please just remember  
As you pick up the horn  
And you call to the office  
He may be out in the storm.

-Unknown

701-444-9268 • Toll free: 1-800-584-9239 • 906 4th Ave. NE • Watford City, ND

## Bring The Kids In!

We Now Have A Family-Friendly Section



### Happy Holidays!

To all our friends  
& customers!



905 3rd Ave. SW (South of the  
Watford Hotel) • 701-842-2693

### BAR & GRILL



Wishing everyone  
a Happy Holiday season  
and a Prosperous  
New Year!



**MBI**  
Energy Services

## Holiday Greetings To All Our Friends!



### From Lund Oil, Inc. & One Stop

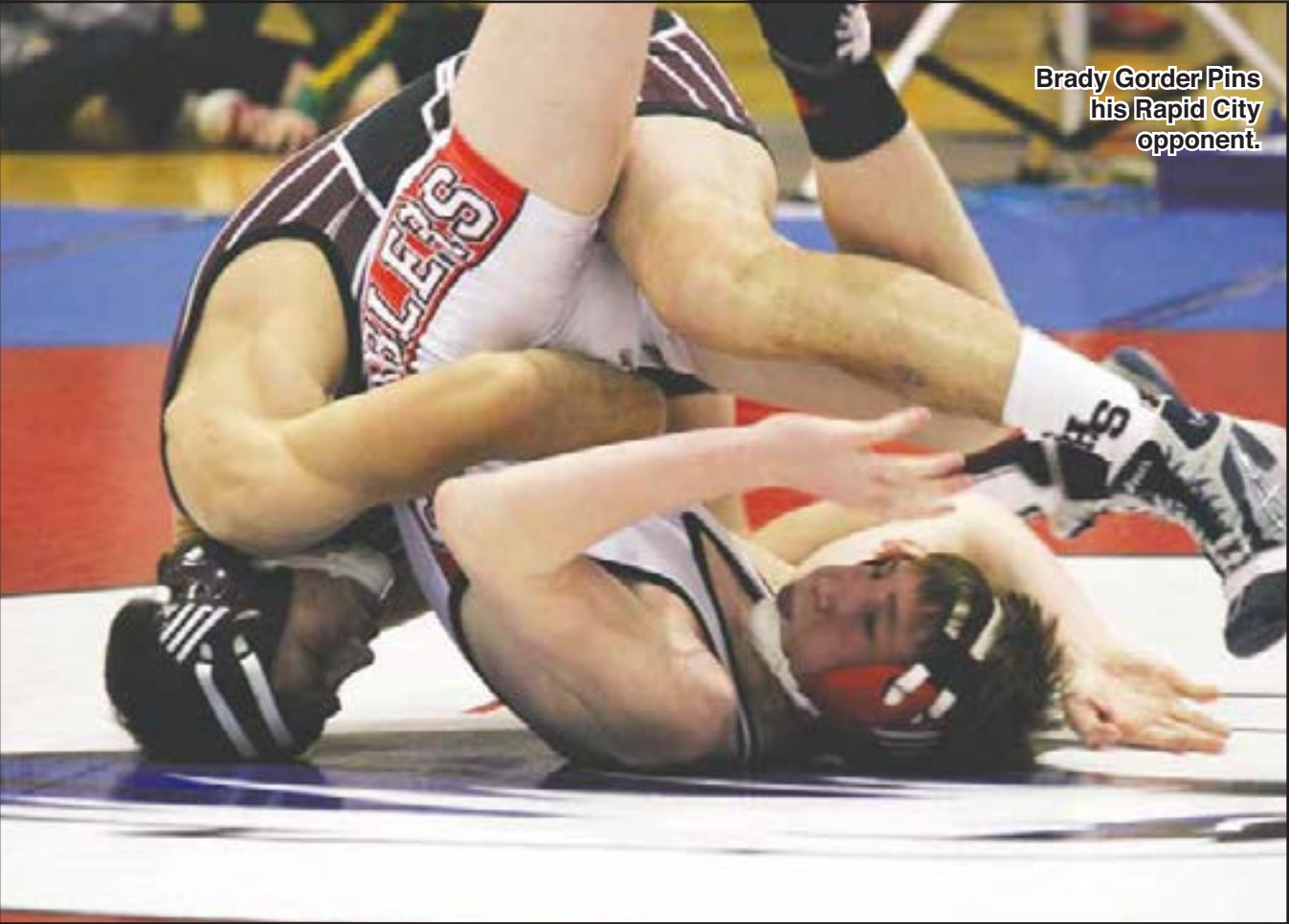
#### ONE STOP

Hwy 85 W • Watford City, ND | 701-444-3122

### Lund Oil, Inc.

Watford City, ND | 701-842-2805





Brady Gorder Pins  
his Rapid City  
opponent.



**COOKS ON MAIN**  
*for the everyday chef*

## NEW YEAR'S EXTRAVAGANZA

*MAKE IT PERFECT WITH:*

- MOSCOW MULES CUPS • BARWARE ESSENTIALS
- QUICK APPETIZERS • AND MORE!

Open Mon - Sat: 9am - 6pm  
224 Main Street • Williston, ND  
701-572-COOK (2665) • (F) 701-572-2666

## Sidney Wrestling Action

The Sidney varsity wrestlers traveled to Gillette for the Pat Weede Memorial Tourney last weekend. The team took 2nd behind Rapid City Central. Gresh Jones, Wyatt VanBuren, Ethan Graves and Cristian Gomez went undefeated in their weight classes. Gresh Jones brought home the Outstanding Wrestler Award for the lower weight divisions for the 2nd year in a row. (Photos submitted by Kari Jones)



Hunter Severson looks  
for the pin against  
his Natrona County  
opponent.

## Sidney Wrestlers Place at Butte Duals

Team scores: 1. Havre 2. Sidney 3. Columbia Falls  
Individual placers: 113 # Wyatt Vanburen 2<sup>nd</sup> • 138 # Ethan Graves 3<sup>rd</sup> • 126 # Gresh Jones 1<sup>st</sup> • 152 # Ryan Chatterton 1<sup>st</sup> • 160 # Doug Rooney 3<sup>rd</sup> • 170 # Cody Johnson 1<sup>st</sup> • 182 # Cody Christian 1<sup>st</sup> • 205 # Hunter Severson 4<sup>th</sup> • HWT Christian Gomez 3<sup>rd</sup>

HERE'S TO A  
**SPARKLING  
NEW YEAR!**

## New Years Specials

**Serving 4 - 10 pm**

*Soup & Salad Bar Included With All Meals*

**PRIME RIB** \$ **18**  
*Regular .....*

*Queen.....* \$ **24**

*King .....* \$ **28**

*Reservations Welcome*

You're never a stranger at the

**RANGER**  
*Lounge, Casino & Eatery*

Open Mon-Sat: 10am - 2am • Sun: Noon - 2am  
110 S. Central • Sidney, MT • 482-4566

## MERRY CHRISTMAS!

*The Richland County Tavern Association  
would like to extend best wishes for a very  
happy, healthy & safe holiday season.*

*Please Don't Drink & Drive...  
...Call for a Ride!*

**We Support The Sidney  
Shuttle: 406-433-3636**

# RCTA

*Richland County Tavern Association*

Cattle-Ac • Cheerio Lounge • Club Royale • Club Tavern • Double Barrel Saloon  
Elks Lodge • Lucky Lil's • Ranger Lounge • Sidney Liquor • South 40  
Winner's Pub • VFW Club • Waterhole #3

## DRIVE THROUGH WINTER



### 2013 RAM 2500 MEGA CAB

Laramie pkg, 6.7 Cummins turbo diesel,  
automatic, air, leather trim, navigation, heated  
front/rear seats, power sunroof, 44,847 Miles,  
true blue/bright silver. #6803



### 2006 RAM 2500 QUAD CAB

5.9 Cummins turbo diesel,  
automatic, SLT pkg, 4 door, 4x4  
88,895 miles, gray #6772



### 2014 JEEP PATRIOT LATITUDE

4x4, 4 door, 2.4 4-cyl, tilt, white,  
automatic, air conditioning,  
cruise, 7,175 miles, #6785



### 2014 DODGE JOURNEY SXT

All wheel drive, 3.6-V6,  
automatic, air conditioning,  
12,278 miles, red, #6786



### 2010 FORD F150 EXT CAB

XLT pkg, 5.4 V8, automatic, air, tilt,  
cruise, power seat, trailer tow pkg,  
50,862 miles, maroon. #7331



### 2014 CHRYSLER 300C AWD

3.6-V6, automatic, fully  
equipped, 10,796 miles, red,  
#6779

**ACTION AUTO**  
433-2312 • 1-800-788-2312  
www.actionautochryslerdodgejeep.com  
220 East Main, Sidney, MT

Gay McPherson 482-7799  
Gay Schoepf 482-2192  
Jon Nelson 205-649-5285



# Influenza Cases Increasing, Public Health Officials Encouraging Vaccination

Submitted by the Montana Department of Health and Human Services  
Local and state public health officials are seeing a significant increase in the number of confirmed influenza cases being

*We will close at 3pm,  
Dec 24th & be closed  
Christmas Day*

*//*

*We will be closed Dec 31st & Jan 1st*



Mark Brodhead | Manager • 406-480-7332 (Cell) • Office: 406-433-1888  
34940 Hwy 23, south of Sidney by the Flashing Light  
M-F: 8am - 5pm • Sat: 9am - 1pm | [www.bbsalesandservice.com](http://www.bbsalesandservice.com)



## Café Villarreal

**214 S Ellery Ave • Fairview, MT**  
**406-742-5307**

Sun: Closed  
Mon-Thur: 5am - 9pm  
Fri & Sat: 5am - 5pm • 10pm - 4am  
**Serving Mexican & American Food**

## Border Plains Equipment West Plains Inc. and Northern Plains Equipment Offer You THE TOTAL PACKAGE!

EQUIPMENT YOU NEED AT A PRICE YOU CAN AFFORD WITH  
A GUARANTEE THAT GIVES YOU PEACE OF MIND!



**USED  
COMBINES**

36 Month Interest Waiver  
Or An Additional 24 Months  
Of Power Train Protection  
Included On Select Units



**USED  
4WD TRACTORS**

24 Month Interest Waiver  
Or An Additional 24 Months  
Of Power Train Protection  
Included On Select Units



**USED SELF PROPELLED  
SPRAYERS**

24 Month Interest Waiver  
Or An Additional 24 Months  
Of Power Train Protection  
Included On Select Units

Sale Ends December 31, 2014

<b>Border Plains Equipment</b> Stanley, ND • 701-628-2950 Williston, ND • 701-774-0957 Glasgow, MT • 406-228-9341 <a href="http://www.borderplains.com">www.borderplains.com</a>	<b>West Plains Inc.</b> Beach, ND • 701-872-4154 Bowman, ND • 701-523-3296 Dickinson, ND • 701-483-8741 Hettinger, ND • 701-567-4505 <a href="http://www.westplains.com">www.westplains.com</a>	<b>Northern Plains Equipment</b> Mandan, ND • 701-663-9864 <a href="http://www.npend.com">www.npend.com</a>
--	--	---

FINANCING PROVIDED BY  
**CNH CAPITAL**  
LEASING | LENDING | CREDIT CARDS | INSURANCE

© 2014 CNH American LLC. All rights reserved.  
Case IH is a registered trademark of CNH American LLC. CNH Capital is a  
trademark of CNH American LLC. [www.caseih.com](http://www.caseih.com)




# MDT Proposes A Resurfacing Project For MT Highway 23 Near Sidney, MT

Submitted by Lori Ryan, Public Information Officer  
The Montana Department of Transportation (MDT) would like to notify the public and seek comments on a proposal to resurface about 4.7 miles of MT Highway 23, east of Sidney, MT in Richland County. The project begins east of the intersection with Secondary 261, at reference post (RP) 2.8 and extends east for 4.7 miles ending on the Montana / North Dakota border at reference post 7.5.  
Proposed work includes fixing dips in the pavement, applying a new overlay, installing rumble strips, and finishing with a seal & cover (chip seal), upgraded pavement marking, signage and guardrail. The purpose of the project is to extend the service life of the highway and take a cost-effective action to preserve and maintain the existing highway. The project is tentatively scheduled for construction in 2015, depending on completion of all project development activities and availability of funding.  
No new Right-of-Way or utility relocations will be needed. For more information, please contact Glendive District Administrator Shane Mintz at (406) 345-8212 or Project Design Engineer Steve Heidner at (406) 3458247. For the hearing impaired, the TTY number is (406) 4447696 or 1-800-335-7592, or call the Montana Relay at 711. Members of the public may submit written comments to the Montana Department of Transportation Glendive office at PO Box 890, Glendive MT 59330-0890, or online at [www.mdt.mt.gov/mdt/comment\\_form.shtml](http://www.mdt.mt.gov/mdt/comment_form.shtml)

# MEC Donates to Make a Wish

By Brooke Solberg, McKenzie Electric Cooperative  
On December 12th, McKenzie Electric Cooperative hosted their annual Christmas Party for the employees and board members at Outlaws Bar and Grill. During the event, a silent auction was set up with various items donated by staff, board members and contractors.  
This silent auction has been taking place since 2007 at MEC, and has made contributions totaling \$4,597, prior to the 2014 year. 2014 set a new bar for the auction, after achieving the highest donation amount yet, \$1,359. After the 2014 event, MEC will have raised over \$5,956 for various organizations that serve in our own communities, through this holiday silent auction. Previous donations have been sent to recipients such as the Salvation Army, Relay for Life, and McKenzie County Social Services. All of the auction items and funds raised were contributed thanks to MEC's employees, board members and contractors.  
The high bidder for the evening of December 12th was Steve Lautenschlager, contributing \$850 for two silent auction items. As the highest bidder Steve chose to send the total auction amount to the Make a Wish Foundation of ND.  
Make a Wish Foundation is a national non-profit organization that funds wishes to children with life-threatening medical conditions. In 2013, Make a Wish granted the wishes of over 14,000 Kids. By granting wishes to these children, wish kids and their families emerge happier, more confident and renewed to overcome every obstacle.  
This holiday season was definitely the season for giving at McKenzie Electric, thanks to the generosity of many employees and board members present that evening. Because of their contributions, this monetary donation will help cover the cost of a child's wish in the coming months.  
As another year comes to a close, it's important to pay forward the successes that have blessed our lives in the past year, and to remember that this is the season for giving. MEC's employees and board are proud to give back to the communities in which we live and serve.

*Rejoice In  
The Miracle*



*Wishing all of our friends and  
neighbors a blessed holiday.  
Thanks for the kindness you've  
shown us this past year.*



Fairview, MT 59221  
Office: 406-742-5549



# Montana Healthcare Foundation To Provide Funds To Health Departments In Montana - DPHHS To Help

The Montana Healthcare Foundation announced that it will make \$1.3 million in grants to health departments throughout the state beginning in March 2015. “Local and Tribal health departments are in a great position to help us identify health needs in Montana’s communities,” said Aaron Wernham, the foundation’s CEO. “Our goal is to improve health and strengthen public health services throughout the state.”

Since the Foundation is just beginning to build the infrastructure needed to make and administer grants—and won’t have its own grant making system fully operational until next year—the Foundation will distribute the funds with help from the Montana Department of Public Health and Human Services (DPHHS).

DPHHS has the infrastructure and expertise to assist the Foundation on a one-time basis. And the goals of the Foundation’s grant are consistent with the state’s health improvement plan. These funds will provide critically needed support to local and Tribal health officials seeking to improve the health of Montanans.

“Improving the health of every Montanan is really what we are about,” said Richard Oppen, the Director of DPHHS. “We often rely on partners and are delighted to collaborate with the Montana Healthcare Foundation.”

Cooperation between a non-profit and state agency is common. “DPHHS has master agreements with local and Tribal health departments already in place, which will streamline the administration of these grants,” said Wernham. “DPHHS will also provide data and technical assistance to help make sure these grants are successful.”

Here’s how it will work- The Foundation will make \$1.3 million available to health departments throughout the state and

DPHHS will manage the process. Most of the money, \$900,000, will be used by health departments to better understand the health needs in their communities and to improve the delivery of public health services. The balance of the money will be used by DPHHS to provide technical assistance, including onsite training and data collection and analysis.

On behalf of the Foundation, DPHHS will issue guidelines that will assist communities to apply for grants. There are three levels of funding and health departments can select which is most appropriate for their communities. Depending on which level health departments apply for, funding will be provided to develop community leadership, develop strategic health improvement plans, or implement specific health programs.

Foundation leaders believe that this initial round of giving will have several significant benefits. It will give local and Tribal health departments greater capacity to improve the health of their constituents. It will provide the Foundation and DPHHS information on health needs and the best strategies and partners to address them. And it will also help the Foundation plan future grant making programs.

“This is a great way to kick off our efforts to improve the health of everyone in Montana,” said Wernham. “We appreciate DPHHS’s technical expertise and administrative help which will allow us to begin building partnerships with communities around the state.”

# USDA Seeks Applications for Grants to Help Finance Rural Broadband

MNAXLP

USDA Rural Development Montana State Director Anthony Preite announced today that USDA is soliciting applications for Fiscal Year (FY) 2015 Community Connect Program grants. The program provides grants to establish essential broadband services in rural communities where it is currently not available.

“Many rural communities in Montana do not have access to broadband,” said Preite. “USDA’s Community Connect Grant Program ensures that rural residents have the ability to run businesses, get the most from their education, and benefit from the infinite services that fast, reliable broadband provides.”

The minimum amount of grants awarded will be \$100,000; the maximum is \$3,000,000. The deadline for applications to be submitted is February 17, 2015.

Last year, USDA announced new rules to better

target Community Connect grants to areas where they are needed the most. To view the rules, go to: <http://www.gpo.gov/fdsys/pkg/FR-2013-05-03/pdf/2013-10502.pdf>

Since its inception, the Community Connect program has funded 237 projects with investments of \$149 million.

In Illinois, a \$300,000 Community Connect Grant helped Mt. Vernon.Net Inc. create a broadband network serving rural rescue services, the police department, schools and residents. This network has increased public safety by enabling emergency services to receive real-time updates. It also has enhanced educational opportunities by allowing students to use online resources and has grown business opportunities by opening up e-commerce options to rural businesses.

For more information, see page 75120 of the December 17, 2014 Federal

Register or contact Kim Jacobs at (307)254-0910 or [kim.jacobs@wdc.usda.gov](mailto:kim.jacobs@wdc.usda.gov).

President Obama’s historic investments in rural America have made our rural communities stronger. Under his leadership, these investments in housing, community facilities, businesses and infrastructure have empowered rural America to continue leading the way – strengthening America’s economy, small towns and rural communities.

# Making Health Insurance Make Sense

Submitted by Mike Fierberg, CMS Public Affairs

Answers to Some of the Most Commonly Asked Questions

Q: I don’t have health insurance, but I missed the deadline to get covered starting January 1. Can I still enroll? Will I be penalized for missing part of the year?

A: Yes, you can still enroll. Open Enrollment in the Health Insurance Marketplace runs until February 15, 2015, so there’s still time to get covered. If you do that, and if you keep your policy in force for the rest of 2015, you won’t have to pay a Shared Responsibility Fee, even though you had a month or two without coverage. You can do this by going to [www.healthcare.gov](http://www.healthcare.gov), or calling the Marketplace at 1-800-318-2596, any time. Phone lines are open 24 hours every day. You can also find local help by going to [localhelp.healthcare.gov](http://localhelp.healthcare.gov) and entering your home town or zip code. Unbiased, trained people will help you shop, compare, and enroll.

Q: I already have coverage through the Health Insurance Marketplace, which automatically renewed, but the premium went up. Can I still shop for a better deal?

A: Yes. You can still change plans before February 15, and the change will be effective March 1. And many people will find that shopping in the Marketplace can really pay off. More than 70% of those already enrolled can find a lower premium plan, at the same metal level, before tax credits, than they have now. In addition, going back into the Marketplace will help assure you of getting all the tax credits you are eligible for. If your allowed tax credit went up on 2015, but you automatically renewed, you could be missing out on lower upfront costs for your policy. On the other hand, if your allowed credits went down, you need to know that now, so you won’t have to repay the excess when you file your taxes next year.

Q: Filling out the application was a time-consuming and frustrating process last year. Do I have to go through the whole thing again?

A: No. If you’ve already filled out an application, you’ll find about 90% of the renewal document is already filled in with information you’ve given. It’s easy to change anything if you need to. If you’re new to Marketplace, you’ll be directed to an all-new application page, which is much shorter and simpler than last year’s, for the vast majority of people.

For more information, visit [www.healthcare.gov](http://www.healthcare.gov), or call the Marketplace call center at 1-800-318-2596, 24 hours a day, except for major holidays.



Stk# 53101N  
2012 NH SP.365F, 350 Hours  
Was \$268,000 **Now \$249,000**



Stk# 23389W  
2011 CIH 9120, 690E/545S Hours  
Was \$290,000 **Now \$242,000**



Stk# A00299  
2012 CIH 8230, 550 Hours  
Was \$302,000 **Now \$265,000**



Stk# GUH308  
2013 CIH 7230, 445 Hours  
Was \$298,000 **Now \$237,000**

**Border Plains Equipment**  
Stanley, ND • 701-628-2950  
Williston, ND • 701-774-0957  
Glasgow, MT • 406-228-9341  
[www.borderplains.com](http://www.borderplains.com)

A00327 - 2009 – Nitro Sprayer – 1087 Hours .....	Was \$257,000 now \$235,000
53202W – 2012 – CIH 4430 – 518E Hours .....	Was \$308,000 now \$278,000
WUY409 – 2012 - CIH 4430 .....	Was \$310,000 now \$278,000
WUY417 – 2012 - CIH 4430 – 450 Hours .....	Was \$310,000 now \$278,000
WUY405 – 2013 – CIH 4430 – 400 Hours .....	Was \$323,000 now \$309,000
24074W – 2008 – NH CR9070 – 1329 Hours .....	Was \$225,000 now \$167,000
23388W – 2012 – CIH 9230 – 599E Hours .....	Was \$313,000 now \$288,000
23370W – 2011 – CIH 9120 .....	Was \$290,000 now \$242,000
23347W – 2011 – CIH 9120 – 942E/729S Hours.....	Was \$263,000 now \$242,000
23341W – 2011 – CIH 9120 .....	Was \$263,000 now \$242,000
UC773 – 2012 – CIH 8230 .....	Was \$286,000 now \$265,000
GUH266 – 2012 – CIH 8230 .....	Was \$302,000 now \$265,000
GUH306 – 2013 – CIH 8230 – 380 Hours .....	Was \$314,000 now \$274,000
GUH301 – 2013 – CIH 8230 – 397 Hours .....	Was \$314,000 now \$274,000
WUH719 – 2009 – CIH 8120 – 1023 Hours .....	Was \$208,000 now \$180,000
UC724 – 2009 – CIH 8120 .....	Was \$239,000 now \$180,000
UC712 – 2010 – CIH 8120 .....	Was \$258,000 now \$190,000
GUH287 – 2010 – CIH 8120 .....	Was \$227,000 now \$190,000
UC735 – 2011 – CIH 8120 – 800 Hours .....	Was \$278,000 now \$217,000
GUH270 – 2012 – CIH 7230 .....	Was \$290,000 now \$237,000
23133B – 2007 – CIH 7010 – 1944 Hours .....	Was \$166,000 now \$130,000

**West Plains Inc**  
Beach, ND • 701-872-4154  
Bowman, ND • 701-523-3296  
Dickinson, ND • 701-483-8741  
Hettinger, ND • 701-567-4505  
[www.westplains.com](http://www.westplains.com)

**Northern Plains Equipment**  
Mandan, ND • 701-663-9864  
[www.npend.com](http://www.npend.com)



Stk# 23387W  
2012 CIH 9230, 560E Hours  
Was \$313,000 **Now \$288,000**



Stk# WUY407  
2011 CIH 4420, 735 Hours  
Was \$245,000 **Now \$239,000**



Stk# 53216W  
2012 CIH 4430, 445 Hours  
Was \$305,000 **Now \$278,000**



Stk# 53106B  
2012 CIH 4430, 656 Hours  
Was \$309,000 **Now \$278,000**



## Super Saving Sale

Modulars starting at \$60 per sq.ft.



**LOCK IN SALE PRICE, TAKE DELIVERY LATER!**  
• **WOW!!** Triplewide 2790 sq. ft. with all the bells & whistles.

**SAVE \$1000's**

• 1600 sq. ft. modular, 3 bedroom, 2 bath, 6" walls, glamour bath, low-e windows, upgraded cabinets. **ONLY \$103,900**

**NEW HOMES**  
of the **FUTURE**

**406-248-1100**

[www.newhomesofthefuture.com](http://www.newhomesofthefuture.com)

7239 South Frontage Rd., Billings, Montana 59101

Ring In The New Year  
With Family & Friends!

## Dinner Specials:

- **Oven-Broiled Lobster Tail (10-12oz)**
- **Center-Cut Top Sirloin Steak & Lobster**  
Includes Soup or Salad & One Side
- **Complimentary Chocolate-Dipped Strawberries For Diners**  
(while they last)

Champagne & Party  
Favors At Midnight!

Cattle·ac

STEAKHOUSE • CASINO • BAR  
[www.cattleac.com](http://www.cattleac.com) | 406-433-7174 | Sidney, MT

End Of The Year Inventory Reduction Sale  
Over 30 Units Priced To Sell  
Our Loss Is Your Gain  
Units Can Be Seen On Our Website  
By Clicking The “Hot Deals” Button



# Game Warden Exam Dec. 29

**Submitted by North Dakota Game and Fish Department**  
Individuals interested in taking the game warden exam scheduled for Dec. 29 are reminded to register by submitting an online application through the North Dakota State Job Openings website.  
Applicants must be at least 21 years of age and have a bachelor's degree. Other requirements are a current North Dakota peace officer license, or eligibility for a license, and a valid driver's license. Candidates must have excellent interpersonal skills in communications and writing, and must not have a record of any felony convictions.  
Game wardens enforce game and fish laws and related regulations in an assigned district and other locations as determined by the department. Wardens normally work alone under varied conditions, at all hours of the day, night and weekends. In addition to law enforcement duties, wardens assist in the areas of public relations, education programs, and hunter and boat safety education.  
Selection procedures following the test may include an evaluation of the application, a structured oral interview, background and reference checks, and psychological and medical examinations.  
The salary for beginning game wardens through training is \$3,500 per month. Upon successful completion of training, the salary is \$4,016 - \$6,693 per month. Wardens also receive the state benefits package, including travel allowance. Uniforms and other equipment are provided.

# DSU Fall Commencement Features Two Student Speakers From Dickinson

**Submitted by Mark Billings, Dickinson State University**  
Dickinson, North Dakota natives Joshua Kralicek and Sarah Jennings were the featured student speakers Of the 110 total graduates, 28 graduated Cum Laude with a minimum GPA of 3.5, three graduated Magna Cum Laude with a minimum GPA of 3.75, and one student graduated Summa Cum Laude with a minimum GPA of 3.9, said Johnna Douthit, assistant director of academic records at DSU.  
While the majority of students were from North Dakota, the graduating class represented 12 other states, including California, Arizona, Texas, Florida, Georgia, Connecticut, South Dakota, Montana, Wyoming, Colorado, Minnesota and Wisconsin. Students from the countries of Canada, China, Nigeria and Uganda also graduated in the fall commencement.  
"With the smaller number of graduates and intimate setting in Stickney Auditorium, fall commencement is a special event," said Douthit.  
DSU is ranked by U.S. News & World Report as one of the top public universities in the Midwest in its 2015 Best Colleges report. One of 11 institutions in the North Dakota University System, DSU offers 51 bachelor's degrees, four associate degrees and two certificate programs.

Classes are offered in Dickinson, Bismarck, and Williston; 81 courses are online.  
The university's mission is to provide high-quality accessible programs, promote excellence in teaching and learning, support scholarly and creative activities, and provide services relevant to the economy, health and quality of life for the citizens of North Dakota.  
The following students have graduated from Dickinson State University;  
Carl Dynneson of Sidney, MT graduated with a Bachelor of Science in Biology  
Carl Dynneson of Sidney, MT graduated Cum Laude with a Bachelor of Science in Education in Biology Education and Composite Science Education  
Located in Dickinson, ND, Dickinson State University is a member of the North Dakota University System. Dickinson State University is a regional four-year institution that offers more than 50 undergraduate programs in education, fine arts, communication, agriculture, nursing, natural science and business. Learn more about Dickinson State University at [www.dickinsonstate.edu](http://www.dickinsonstate.edu)

# Energy Roundup

# Oil Industry A "Godsend"

**Submitted by Jessica Sena**  
One of the most exciting things to take place in this country over the last few years has been the resurgence in American oil from American soil. The conversation about energy has changed from one about scarcity to one of abundance.  
Along with the tremendous uptick in drilling and production, has come the demand for thousands of jobs. The demand for workers couldn't have come at a more opportune time either, as much of the country saw unemployment numbers skyrocket during the recent economic recession of 2008. Today, energy producing states like North Dakota and Texas are experiencing the lowest unemployment numbers in the

United States, and still have openings for job seekers. This poses huge opportunities for not only oil prolific areas, but for neighboring states as well. Montana is a prime example of a state that's seen an economic boom in light of a nearby oil boom.  
Not all who've entered the oilfield had previous experience working in oil and gas. In fact, many have gone to work in the oil patch due to declining wages or work shortages in other industries. Take Kurt Kukowski, for example, now with Northern Oilfield Services in Plentywood, MT.  
Originally from Minnesota, Kurt taught and coached for 11 years in Wisconsin before deciding that he would move to Plentywood to take a job in the Bakken, so that he could

provide more for his family. That was two years ago. Now, Kurt's wife Becky and their two children, Henry (6) and Vera (3), have also made Montana home. Becky teaches and coaches in the Plentywood School system.  
Kurt is a lease operator, also known as a pumper, and has one of the more routine positions in the oilfield. He gauges tanks daily for fluid levels, recording the numbers first, then calling them into the office by two-way radio. Pumpers also ensure the units and fluid lines are working properly, and act as the eyes and ears on the ground.  
"Towels, a wrench, and a tank gauge are the most important tools for a pumper," Kurt said, who is meticulous about keeping locations clean.  
Many pumpers start out as roustabouts, giving them the opportunity to troubleshoot and problem solve by gaining on-the-job experience of how everything works and is built on a well location. This makes it easier to identify any irregularities on regular pumping routes.  
When asked if a person could make a long-term career out of an oilfield job, Kurt replied, "Of course! I'm trying to."  
The life span of a well can be as long as 40 years. Kurt checks 24 wells a day (between Montana and North Dakota) and is one of eight pumpers at Northern.  
Brandon Cunningham is another pumper at Northern, and has a B.S. in Computer Science, though he was working as a journeyman butcher in Washington before moving to Montana. He says that when the recession hit, union members with fewer years were hit especially hard, and he was barely getting by.  
He'd heard that many were finding high-paying jobs in the Bakken, and left Washington to find out for himself. Though it took time for Brandon to find housing, he now makes a comfortable living, and is even able to send money home to relatives.  
Like Brandon, many arrive



Brandon Cunningham

in the oilfield with post-secondary degrees they simply cannot put to work. One such short service employee at Northern, Dustin, has four associate degrees which he says he couldn't use in northern California, where he moved from just a few months ago.  
Some oilfield workers bring experience from other

natural resource industries, like Joe Klessig. Joe moved out to Montana, also from Wisconsin, with a background in logging. He brought with him a Commercial Driver's License and experience driving heavy equipment, including logging trucks, which has proven valuable in his position with Northern Oilfield Services.



"Towels, a wrench, and a tank gauge are the most important tools for a pumper."  
— Kurt Kukowski

Count on **Tractor & Equipment Co. and T&E The Cat Rental Store**, for all your equipment buying and rental needs. From concrete saws to heavy construction equipment, we offer products from Cat® and other leading brands to meet most jobsite needs.

Lindsay Smith  
406-696-0714

T & E CAT Rental

**SONDA'S solutions**

**Specializing in FR Clothing**

OFFICE: 406-433-6757 • CELL: 406-697-7153  
2221 S. CENTRAL AVENUE • SIDNEY, MT 59270  
FAX: 406-433-6755 • WEBSITE: [WWW.SONDASSOLUTIONS.COM](http://WWW.SONDASSOLUTIONS.COM)

**SERVICES, INC.**  
Oil Field & Industrial Construction

Phone: 406-433-6754  
Fax: 406-433-6755  
[www.slserviceinc.com](http://www.slserviceinc.com)

2265 S. Central Ave. Sidney, MT 59270  
Email: [les@slservices.net](mailto:les@slservices.net)

**Recruiting? We Can Help!**

**The Roundup**

406-433-3306 | [info@roundupweb.com](mailto:info@roundupweb.com)

**HAZLINE CONSTRUCTION**  
406-433-2429 • SIDNEY, MT

**Oilfield & Pipeline Construction**

Phone: (406) 433-CHAZ (2429)  
Fax: (406) 433-2439  
1405 4th St. SW Sidney, MT • Ste. #7

**Customer Service is Our #1 Priority**

**BORDER STEEL AND RECYCLING, INC.**

**Construction Materials • New Steel • Aluminum & Stainless**  
Brady Smelser • Tim Mulholland • Kelly Moody • Bret Smelser • Ernie Gawryluk • Ken Syme  

Sidney	Glendive	Williston	Plentywood
35002 CR 123 406-433-7737 1-855-810-2995	2703 W. Towne St. 1-800-423-5219	13896 W. Front St. 1-800-820-5493	Hwy 16 East 406-765-2624

**JMAC resources**  
Sand & Gravel | Earthmoving  
Underground Utilities | Site Development



For employment information visit:  
[www.jmacresources.com/Jobs](http://www.jmacresources.com/Jobs)

**MBI Energy Services**

Currently seeking Class A CDL Drivers in our ND locations

Become a part of MBI's team today!

701.575.8242  
Apply online [www.mbienergyservices.com](http://www.mbienergyservices.com)

**We Are Your Oilfield Supply Headquarters!**

**Richland Pump & Supply**

Down Hole Sucker Rod Pumps  
Tubing Anchors • Gates  
Hydraulic Hoses & Belts  
Balon Ball Valves • Line Pipe • Tubing  
Fittings • Norris Sucker Rods

Stanley, ND  
701-628-8706  
Sidney, MT  
406-488-8706 • [rpands@midrivers.com](mailto:rpands@midrivers.com)



# The Roundup Classifieds

Reach Over 21,000 Readers Each Week In Eastern Montana & Western North Dakota And Always On The Internet at [roundupweb.com](http://roundupweb.com)  
(Paypal required for online purchases)

Add a photo  
to your classy online!  
(additional charge)

Now Taking  
Credit Cards!  
(5% charge added  
to all transactions)

Get Up To 30 Words For Just \$9 • Deadline: Monday

**HELP WANTED**  
**CITY ATTORNEY**  
**CONTRACTED SERVICES**  
The City of Alexander will be accepting proposals for contract City Attorney services. Proposals will be accepted until 4:00 p.m. on Monday December 15, 2014. Proposals can be mailed to the City of Alexander P.O. Box 336 Alexander, N.D. 58831 or emailed to [cityofalexander@ruggedwest.com](mailto:cityofalexander@ruggedwest.com), or dropped off at the City Hall at 112 Manning Ave. For inquiries please contact the City Hall at 701-828-3461 or e-mail at [cityofalexander@ruggedwest.com](mailto:cityofalexander@ruggedwest.com).

**BARTENDERS WANTED**  
Enjoy a private club atmosphere. Full & part time bartenders needed at the Elks Lodge, Sidney, MT. Apply in person with Randy, 1pm - 6pm at 123 3rd St. S.W.

**CARRIERS WANTED**  
Need extra cash or want to get some exercise while getting paid? We have carrier routes available in most parts of Sidney. Call 406-433-3306, or fill out application at The Roundup, 111 W. Main, Sidney.

**WANTED SERVERS & KITCHEN STAFF**  
Wage DOE. Apply in person at Cattle-Ac, 119 N. Central Ave., Sidney, MT.

**REAL ESTATE**  
**5 ACRE COMMERCIAL LOTS FOR SALE**  
Conveniently located between Williston & Watford City, right off Hwy 85. Graded recently. Perfect for a new shop, or business! Lots have rural water, power, RTC, & electric right at the road. Hwy 85, S.

on 140th Ave NW, 1/4 mile on right. 406-471-4049.

**FOR RENT**  
**HOUSE FOR RENT**  
House for rent in Lambert. Clean 2 bedroom house, no smoking, drugs, or pets. \$1,000/mo plus \$1,000 deposit. Call 406-774-3731.

**RETAIL SPACE FOR RENT**  
Located in downtown Sidney, will remodel to suit. Utilities pd., cell phone booster, wireless internet, in-house restaurant. \$750/mo. Call Linda, 406-489-1945 or Marci, 701-770-1904.

**SERVICES**  
**THE QUEEN'S CORK**  
Host a guided tasting of Napa Valley Artisan Wines in your home. \$29.95+ shipping. Call 406-765-7713 email: [freddy@nemont.net](mailto:freddy@nemont.net). Find me on Facebook: The Queen's Cork.

**SANDING & SNOW REMOVAL**  
Hot Wheels Sanding & Snow Removal. 1 1/2 yard sander & large plows. Call 406-489-3219.

**WINDSHIELD REPLACEMENTS**  
Lowest price around. Quick service. Over 300 windshields in stock for cars pickups & semis. Magrum Motors, 1820 2nd St. W., Williston, 701-572-0114.

**CLEANING**  
Will clean houses, apartments, rental units, work force housing, business offices, anything you need cleaned, I can do. Will do weekly, bi-weekly times available. Will clean around your schedule. Shampoo carpets & deep cleaning as well. 406-478-2373 or 406-488-1192 leave message. References

available upon request.

**WELDING**  
Welding & repair work. No job is too small. Portable welder, reasonable rates. 701-444-2936.

**FARM & RANCH FOR SALE**  
1200 to 1300 lbs steers, grass fed on the hoof. 701-570-2357.

**HAY FOR SALE**  
1200 lb. round bales. 2013 alfalfa @ \$50/ton. 2014 alfalfa @ \$70/ton. Call 701-770-1622.

**HAY BALERS AND RANCH SUPPLIES**  
Tired of wasting hay? Try the Bextra Round Bale Feeder or the Common Sense double bale feeder. Steel calf shelters (save calves and tax deductible!) Also 24ft steel windbreak, free standing panels. J.D. 535 round baler, Hesston 6550 hay conditioner and a 2007 Case-IH MFWD JX95 loader tractor. Kueffler Ranch Supply 701-694-3620.

**MINERALS & supplements**  
Complete line of minerals & supplements, Crystalx protein & mineral tubs for cattle, horses & sheep. All types of liquid feed for livestock. Calving supplies. R&J Ag Supply 406-488-1953, 406-480-2006, 1-800-233-2499, Sidney, MT.

**VERMEER HAYING EQUIPMENT**  
See us today for all your haying & feeding equipment, sweeps & farm oil. Anderson Vermeer Sales & Service. Open Mon.-Fri., 8 a.m.-5:30 p.m. 701-828-3358 or 701-828-3482 (after

hrs.). Alexander, ND.

**FOR SALE**  
**RESTAURANT EQUIPMENT FOR SALE**  
Open your pizza restaurant with a large double stone cooking oven, plus other restaurant equipment. Call Russ @ 406-489-1945.

Check us out weekly  
with...



Monthly with...



Or take advantage of  
all our publications  
every day at...



## FOR RENT

3-4 bedroom newly  
built houses for rent in  
Williston, ND.  
\$2,750 - \$2,800.  
Please contact  
Johnston Property  
Management for  
details. 701-842-4205

## AIRCRAFT FOR SALE:

**1981 Hughes 269C TTA 3132:** TSMOH 845, 3 new M/R blades, Component times on request, big fuel and much more. ~~\$157,000~~ **\$147,000**

Call Barry at Sidney Air Service: 406-480-2024

HEADQUARTERS FOR STOCKMEN  
*Williston Saddlery*  
14006 West Front Street - Williston, ND 58801  
4 1/2 Miles West on Hwy. 2

- Trailers
- Saddles & Tack
- Complete Feed Line
- Livestock Equipment
- Animal Health Products

*"If ya wants it - we got it.  
If we ain't got it - we can get it.  
If we can't get it - ya don't really want it!"*

We are like a good Horse -  
We aim to please

TELEPHONE  
(701) 572-2267

**Hefty**  
SEED COMPANY

**Agronomist Position Available Immediately**

Hefty Seed Company has as agronomy position open now at the Sidney location. Work for an outstanding company and a leader in the field!

**For more information, call Hefty Seed Company, Sidney at : 406-488-4338 (HEFT)**

**We Will Be Closed  
From Noon, Dec 24<sup>th</sup>  
Through  
Sun, Dec 28<sup>th</sup>**

Merry  
Christmas

**The Roundup**

111 West Main • Sidney, MT | 406-433-3306 • 1-800-749-3306

**COOKS NEEDED!**

**We Need Full & Part-time Cooks!!**

Room & Board Available

Wages are competitive!

**Hi-Way Lounge**  
Alexander, ND • 701-828-3100

**Kids, Earn \$\$\$**  
Join The Roundup Carrier Team!

**\$100**  
SIGNING BONUS!

Plus Cold Weather Bonus During the Winter Months & Periodic Raises!

Routes Available In Many Sidney Neighborhoods! Call Erin at (406)433-3306 for details.

**The Roundup**

\*Distributed over a 5 month period.

**Bakken Mobile Veterinary Service**

**Dr. Vince Stenson**  
Complete small animal care  
**8 am - 4 pm**

**Sidney:**  
Tues, Dec 30 & Thurs, Jan 8  
Tractor Supply Co.

**Culbertson:**  
Wed, Dec 24, 31, Jan 7, 14 & 28  
County Ext. Bldg on Main Street

**Call for Appointment**  
(701) - 609 - 3705

**Mini-Storage**

**STORAGE UNITS AVAILABLE**  
20X20 • 10X20  
10X16 • 8X9

Sidney, MT  
482-3799 or 482-2666



# HELP WANTED

Are you looking for a fulfilling career with a large regional energy supplier? If so, Montana-Dakota Utilities is looking for you!

## Results Technician in Sidney, MT

### Major Responsibilities:

- Constructs, maintains, installs and inspects all electronic equipment and instrumentation within a power plant facility

### Minimum Qualifications:

- Associate Degree in Electronic Technology or equivalent work experience
- Ability to read and interpret blueprints and electronic schematic, piping and instrumentation diagrams, logic and loop diagrams, and systems
- Ability to work independently, utilize hand tools, mobile work platforms, and testing equipment

### MDU offers:

- Competitive salary
- Eligible for Annual Incentive and Safety bonus plan
- 401(k) savings plan with employer match and retirement contribution
- Health, dental, vision and life insurance
- Tuition Reimbursement

**Apply today at [jobs.mdu.com](http://jobs.mdu.com)!**

Montana-Dakota Utilities Co • A Division of MDU Resources Group, Inc

**MP** Must be legally authorized to work in the United States, no sponsorships considered. Subject to pre-employment drug testing & background checks. MDU is an equal opportunity employer M/F/D/V Apply online & check our other vacancies currently open with the MDU Resources Group, Inc. on our website: [jobs.mdu.com](http://jobs.mdu.com)

**SIDNEY HEALTH CENTER**  
Exceptional Care for Life

**EMPLOYMENT OPPORTUNITIES**

Sidney Health Center's most valuable resource is the people who serve our patients, residents and guests. Join our team!

- Certified Nurses Assistants
- Environmental Services
- Food Services
- Lodge Cook & Dietary Aide
- Radiation Technologist/Ultrasound
- Registered Nurses

**We promote a Work-Life Balance**

**TOP 100** 9 Out of 10 Employees Agree: "I don't have to choose between my job and family!"

For additional information or to apply online, please visit our website or contact: Marilyn Olson • Phone: (406) 488-2571  
[mjolson@sidneyhealth.org](mailto:mjolson@sidneyhealth.org) • 216 14th Ave SW • Sidney, MT

**Visit Our Website at: [www.sidneyhealth.org](http://www.sidneyhealth.org)**



The

Roundup

Will Be Closed From 12pm - 1pm  
Every Tuesday - Friday

111 West Main • Sidney, MT | Office: 433-3306 • Fax: 433-4114

The Auto Trader Is Back!

Place Your Photo Here

ONLY \$17 A WEEK!  
If you run it for 2 weeks & it doesn't sell,  
we'll run it for 2 more weeks for  
**FREE!!**  
Email: [classads@esidney.com](mailto:classads@esidney.com) • Call (406) 433-3306 for details.

AUTO TRADER

The

Roundup

Classifieds

Reaching over 10,659 Households in Western North Dakota  
and Eastern Montana Every Week

(Please Print)

1	2	3	4	5	6
7	8	9	10	11	12
13	14	15	16	17	18
19	20	21	22	23	24
25	26	27	28	29	30
31	\$9.10	32	\$9.20	33	\$9.30
34	\$9.40	35	\$9.50	36	\$9.60 (etc.)

\$9.00 for 30 words or less; 10¢ per additional word  
**Payment Must Accompany Ad**

Number of words \_\_\_\_\_ x Number of Times \_\_\_\_\_ = Cost \$ \_\_\_\_\_

Name \_\_\_\_\_

**Mail To:**  
The Roundup  
PO Box 1207, Sidney, MT 59270

HURLEY'S  
OILFIELD SERVICES

• Potable Water • Sewer System  
• Loaders • Communications  
• Backhoe • Trucking  
• Skid Houses • Porta Potties  
**406-742-5312**  
Fairview, MT

NEU  
CONSTRUCTION, INC.

• Oil Field Roads & Locations  
• Reclaim Work  
• Gravel & Scoria Hauling  
Fairview, MT  
**406-742-5549**

LONG X BOTTLE  
SHOP

Drive Thru  
Mon-Sat:  
10am-8pm  
Sun: 1-4:30pm  
Hwy. 85 Watford City  
**701-444-3335**  
(Located in the Long X Visitor Center)

Walk In  
Mon-Sat:  
8am-9pm  
Sun: 1-5pm

Sports Booster

WEEKLY SCHEDULE

**Hockey**

Sat, Dec 27  
Sidney All Teams Alumni Tourney

Fri-Sun, Jan 2-4  
Sidney Girls U19 at Aberdeen Tourney  
Sidney Girls 12U at Fargo Tourney  
Fargo at Sidney Jr. Gold, 7 pm

Fri, Jan 2  
Watford City Jr. Gold at Crosby,  
7:30 pm  
Park River at Watford City Jr. Gold,  
7:30 pm

Sat, Jan 3  
Dickinson at Sidney PeeWee, 1 pm  
Sidney Bantam at Minot, 11 am  
Park River at Sidney Jr. Gold, 7 pm  
Watford City PeeWee at Bismarck Red,  
4:15 pm  
Fargo at Watford City Jr. Gold A, 11 am  
Watford City Bantams at Bismarck,  
2:30 pm  
Fargo at Watford City Jr. Gold B, 7 pm

Sun, Jan 4  
Minot Black at Sidney PeeWee, 12 pm  
Sidney Bantam at Bismarck, 10 am  
Sidney Jr. Gold at Watford City, 12 pm  
Watford City PeeWee at Bismarck  
White, 12:45 pm

Thurs, Jan 8  
Dickinson at Watford City Jr. Gold A,  
7:30 pm

Bottineau at Watford City Girls, 7 pm  
Savage Girls at Culbertson, 6 pm  
Savage Boys at Culbertson, 7:30 pm  
Fairview Girls at Westby, 6 pm  
Fairview Boys at Westby, 7:30 pm  
R&L at Bainville Girls, 6 pm  
R&L at Bainville Boys, 7:30 pm  
Froid/Lake at Brockton Girls 6 pm  
Froid/Lake at Brockton Boys, 7:30 pm

Sat, Jan 3  
Sidney Boys at Hardin, 12/1:30/3 pm  
Sidney Girls at Hardin, 12/1:30/3 pm  
Bowman at Watford City Boys, 5 pm  
Watford City Girls at Ray, 2:30 pm  
MonDak at Savage Girls, 4 pm  
MonDak at Savage Boys, 5:30 pm  
Brockton at Fairview Girls, 4 pm  
Brockton at Fairview Boys, 5:30 pm  
Culbertson at Lambert Girls, 4 pm  
Culbertson at Lambert Boys, 5:30 pm  
Froid/Lake Girls at Circle, 4 pm  
Froid/Lake Boys at Circle, 5:30 pm

Tues, Jan 6  
Sidney Boys at Plentywood,  
4/5:30/7 pm  
Sidney Girlst at Plentywood,  
4/5:30/7 pm  
Watford City Boys at White Shield  
high, 7:30 pm  
Trenton at Bainville Girls, 6 pm

Thurs, Jan 8  
R&L at Fairview Girls, 6 pm  
R&L at Fairview Boys, 7:30 pm

**Basketball**

Mon, Dec 29  
Watford City Boys at Our Redeemers  
High, 7:15 pm  
Watford City Girls at Our Redeemers  
high, 5:45 pm

Fri, Jan 2  
Glasgow at Sidney Boys,  
4:15/5:45/7:30 pm  
Glasgow at Sidney Girls,  
4:15/5:45/7:30 pm

**Wrestling**

Fri & Sat, Jan 2 & 3  
Sidney at Fargo

Sat, Jan 3  
Watford City at Fargo

Tues, Jan 6  
Sidney at Miles City

Thurs, Jan 8  
Watford City at Stanley, 6 pm

Be Sure To Thank The Sports Booster Schedule Sponsors On This Page

Family Dining!  
EST. 1972  
Fairview  
406-742-5180  
Open at 4:30pm Turs-Fri  
2pm Sat & Sun

FOOD & GO  
CENEX  
Farmer's Union Oil Co.  
501 6th Ave SE • Watford City  
701-444-3639

Smarter. Better. Faster.  
[www.RTC.coop](http://www.RTC.coop)  
Phone • Internet • TV

THE BUSINESS ROUNDUP

REACH 26,500 READERS IN THE ENTIRE MONDAK REGION

406-433-3306 OR 800-749-3306 ~ [INFO@ROUNDUPWEB.COM](mailto:INFO@ROUNDUPWEB.COM)

GO TO [WWW.ROUNDUPWEB/DIRECTORY](http://WWW.ROUNDUPWEB/DIRECTORY) FOR DIRECT LINKS TO COMPANY WEBSITES & LOCATIONS

\$25<sup>00</sup>/WK

NICK JONES  
REAL ESTATE

REALTOR

TRUCK ROUTE SOUTH, SIDNEY  
OR CONTACT ONE OF OUR AGENTS:

Justin Jones  
406-480-9525

Dennis Wick  
406-480-1550

Jermain Frenzen  
406-478-3773

Kristin Larson  
406-480-5139  
Home: 798-3115

[WWW.NICKJONESRE.COM](http://WWW.NICKJONESRE.COM)

Coverage for all the things  
you care for.

TIFFANY STEFFAN  
323 E Main Street,  
SIDNEY, MT 59270  
[TSTEFFAN@FARMERSAGENT.COM](mailto:TSTEFFAN@FARMERSAGENT.COM)

FARMERS  
INSURANCE

Call 406-433-1377 today for Auto, Home, Life and Business.

B&B  
SALES & SERVICE

SIDNEY, MT

TRAILERS

TRAILERS  
• Cargo • Flatbed  
• Parts • Repairs  
GOLF CARS  
TRAEGER GRILLS  
Mark Brodhead  
Manager  
Cell: 406-480-7332  
Office: 406-433-1888  
3490 Highway 23  
Sidney, MT 59270

email: [bbtrailers@midrivers.com](mailto:bbtrailers@midrivers.com)  
website: [bbsalesandservice.com](http://bbsalesandservice.com)

SLS  
SERVICES, INC.

Oil Field & Industrial  
Construction

2265 S. Central Ave.  
Sidney, MT 59270  
Email: [ls@slservices.net](mailto:ls@slservices.net)  
Phone: 406.433.6754  
Fax: 406.433.6755

[www.slserviceinc.com](http://www.slserviceinc.com)

AGRI  
INDUSTRIES

Plumbing Division

Steve Kober  
Master Plumber  
email: [stevek.agri@gmail.com](mailto:stevek.agri@gmail.com)

Valley V  
PERFORMANCE  
PLUS DEALER

1-877-488-8066  
Office: 406-488-8066  
Fax: 406-488-8067  
1775 S. Central Ave.  
Sidney, MT 59270  
[www.agriindustries.com](http://www.agriindustries.com)

HOSE ASSEMBLIES WHILE YOU WAIT

MFCP  
MOTION & FLOW  
CONTROL PRODUCTS, INC.

Fluid Connectors • Industrial Hose • Seals  
Hydraulics • Pneumatics • Automation  
Filtration • Racor • Instrumentation

406.433.1590  
After Hours: 406.478.3116  
Fax: 406.433.1589

SIDNEY, MT  
205 10th Avenue SE  
[WWW.MFCPPINC.COM](http://WWW.MFCPPINC.COM)

TRADING POST

111 E. MAIN STREET • SIDNEY, MT. 59270

CONSIGNMENT • ANTIQUES  
GUNS • TOOLS • PAWN  
1-406-433-7676  
ASK FOR JERRY OR JOANNA

YOUR COMPANY  
HERE

Beagle

PROPERTIES INC.

View all our listings at  
[www.beagleproperties.com](http://www.beagleproperties.com)

CUSTOMER SERVICE IS OUR #1 PRIORITY

BORDER  
STEEL AND RECYCLING, INC.

Brady Smelser • Tim Mulholland • Kelly Moody • Bret Smelser • Ernie Gawryluk  
Sidney Glendive Williston Plentywood  
35002 CR 123 2703 W. Towne St. 13896 W. Front St. Hwy 16 East  
406-433-7737 1-800-423-5219 1-800-820-5493 406-765-2624  
1-855-810-2995

SONDA'S  
solutions

Specializing in FR Clothing

OFFICE: 406-433-6757 • CELL: 406-697-7153  
2221 S. CENTRAL AVENUE • SIDNEY, MT 59270  
FAX: 406-433-6755 • WEBSITE:  
[WWW.SONDASSOLUTIONS.COM](http://WWW.SONDASSOLUTIONS.COM)

DOORBUSTN

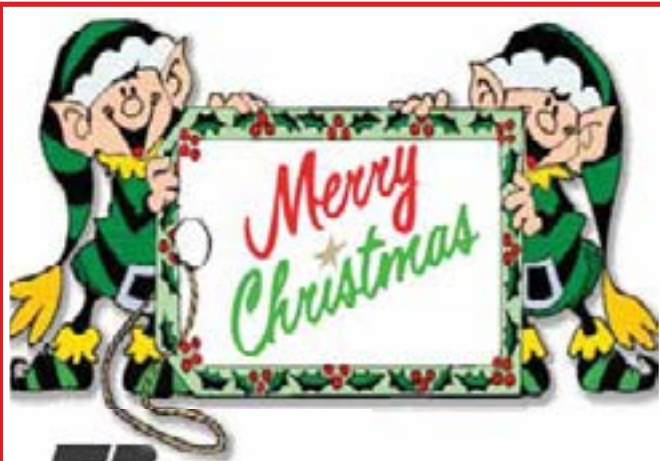
Portables & Septic Service, LLC

Blaine Rogers, Owner

PO Box 1903  
Sidney, MT 59270  
[www.doorbustnportablessepticsservice.com](http://www.doorbustnportablessepticsservice.com)

Office: (406) 433-7586  
Fax: (406) 433-7586  
Service: (406) 489-8915





From Eric,  
Cindy,  
Kela &  
Danielle

**Nodak Mutual  
Insurance Company**

www.nodakmutual.com  
Eric Mogen • Watford City • 701-444-6048

## MERRY CHRISTMAS

FROM DAKOTA WEST CREDIT UNION!



**Sitting (L-R):** Dennis Keller, Sue Keller, Denton Zubke, Sandy Bakke, Vonnie Johnsrud. **Standing (L-R):** Londa Fossum, Megan Valladares, Karen Rafferty, Sherrie Ridl, Tammy Kalberer, Richard Braithwaite, Shelbi Auen, Wanda Brown, Liz Bigley, Joel Kolle, Shonna Bowman, Charlene Frick. **Not Pictured:** Stef Russell, McKenzie McCoy, Tashnia Pinero, Angie Baldwin.

**Dakota  
West  
CREDIT UNION**

Main Office: 340 N Main • Watford City, ND | 701-444-6484

## Happy Holidays from Denise, Malissa & staff



**D&M's Office**  
701-842-6132 • 15 Main • Watford City, ND

## HAPPY HOLIDAYS!



**Front (L-R):** Jim Renbarger, Jim Bredwick, David Tschetter  
**Back (L-R):** Jody Renbarger, Bev Olson, Kari Korslien, Emily Wagner

**American  
INSURANCE CENTER**

701-842-2466  
137 N. Main  
Watford City, ND

## Happy Holidays!



**LONG X  
BOTTLE SHOP**

701-444-3335  
Located in the Long X Visitor's Center



"Can this plane fly faster  
than Santa's sleigh?"

## Happy Holidays

From  
Kent and Kathy Taylor and the Taylor Ag Crew

**Taylor Ag  
Services, Inc.**

701-444-3772 | www.taylorag.com | Watford City, ND

## Happy Holidays



From DeLaura, Jeff and Josslyn Dodds  
and the Barrett Pharmacy Crew

**Barrett Pharmacy & Variety**

145 Main • Watford City, ND • 701-842-3311

## Holiday Greetings



**Sitting:** Scott Swenson, Vicki Monsen, Stacey Arndt, DeNiece Renk, Jane Swenson  
**Middle Row:** Nancy Lee, Sara Ceynar, Stacy Hurt, Brenda Fields, Michelle Schreiber, Lynnette Gallo  
**Back Row:** Chelsea Warnke, Jeff Gronos, Susie Lundin, Dia Northrop, Dale Patten, Wade Elder  
**Not Pictured:** Janel Lee and Arianne Essick



**McKenzie County Bank**

P. O. Box 1410

WATFORD CITY, NORTH DAKOTA 58854

Hwy. 85 W • Watford City, ND

(701)444-6411

www.mckenziecountybank.com

MEMBER FDIC

## Seasons Greetings



**Feedin' the Bakken  
TJ's PIZZA  
& More**  
Watford City, ND

From all of us!

701-842-2771  
½ mile south on Hwy. 85  
Watford City, ND



# Why Pay High Rent?



Luxurious 3 bed/2 bath modular home. Ready to move into! 1800 sq ft with additional 1000 sq ft walk-up attic access. On a 1-acre lot with 2-stall attached garage. Located in Missouri Meadows subdivision 4 miles east of Walmart, Williston.

**Approximate Monthly Payment: \$2,300**

3820 6th Ave. W, Williston - Behind Walmart

701-570-9390 • 701-774-5310 | [www.HomesJJ.com](http://www.HomesJJ.com)



# A Steak in Ag

## A Monthly Report by R-CALF USA

MNAXLP

Recently the Chicago Mercantile Exchange Inc., (CME) took emergency action to unlock the stalled feeder cattle futures market that had been locked the limit down for an unprecedented five consecutive days. In response to the lockdown, cash feeder cattle prices fell approximately \$120 per head for an 800 lb. steer, in just two weeks.

There are many reasons this could have happened including an increase in corn prices and negative feeding margins. However, because the market is thin and cleared by cash rather than by delivery of the actual commodity, it is vulnerable to manipulation.

R-CALF USA has asked the CME and the Commodity Futures Trading Commission (CFTC) to investigate this event to determine if our suspicions of market manipulation are correct.

Ag Secretary Vilsack blamed producers for his

checkoff failure in a recent interview with DTN Ag Policy Editor Chris Clayton. Vilsack had issued a formal notice in the Federal Register on November 10, 2014, seeking public comments on how those reforms should look.

R-CALF USA submitted comments that refute Vilsack's claim that the industry agrees more money is needed for the checkoff. The comments state that after a decade of inaction by USDA to correct the abuses, corruption and conflicts of interest that pervade the current national Beef Checkoff Program, members of R-CALF USA voted overwhelmingly to urge Congress to repeal the program.

A 2010 independent audit report revealed that the checkoff program's primary contractor, the National Cattlemen's Beef Association (NCBA), misappropriated over \$216,000, which the NCBA was later forced to pay back.

Vilsack is responsible for ensuring that the mandatory assessments collected from U.S. cattle producers are being properly spent and he has failed his responsibility. Blaming hard working U.S. cattle producers for that failure is disgraceful, as is pulling baseless facts out of thin air.

Foot-and-mouth disease (FMD) outbreaks persist in South Korea despite wishful thinking by Ag Secretary Vilsack and World Organization for Animal Health (OIE). FMD is perhaps the most contagious disease known to cloven-footed animals like cattle, hogs, sheep, deer and elk. Vilsack has already relaxed import restrictions on livestock and meat from certain areas within counties with FMD and now proposes to greatly expand the areas within those FMD-affected countries that would be eligible to export livestock and meat to the United States.

But that would be irresponsible and dangerous according to R-CALF USA. For example, look at the recurring outbreaks of FMD in South Korea, a country that both Vilsack and the OIE has declared free of FMD. However, South Korea continues to have FMD breakouts and the official cause is "unknown or inconclusive."

The public can still comment on Vilsack's proposal to allow the importation of fresh meat from FMD-affected Northern Argentina. Comments must be submitted on or before December 29, 2014. To comment, go to <http://www.regulations.gov/#!docketDetail;D=APHIS-2014-0032>.

# Richland Co. Injury Prevention/ DUI Task Force Team Quarterly Meeting

By Mary Sundheim, Injury Prevention Specialist - DUI Task Force Coordinator

Richland County Injury Prevention/DUI Task Force Team will have their next quarterly meeting January 8, 2014. It will be held at 2:00 pm in the Community Service Building, 1201 West Holly in Sidney room 201. Priority item on the agenda will be determining 2015 action plan, what does the community need the team to focus on. All meetings are open to the public and community members are encouraged to get involved. The team's goal is educating and bringing awareness on safety for Richland County. For more information please contact Mary Sundheim, Injury Prevention Specialist at the Richland County Health Department 406-433-2207.

# YEAR-END HOLIDAY Special

# SAVE UP TO 20% OFF ON SELECT VEHICLES!

# Merry Christmas

*from Murphy Motors!*

## 2014 CHEVROLET IMPALA LS

SILVER ICE METALLIC, 2.5L AUTO, MSRP: \$28,465. C6112.

**SALE PRICE: \$22,772**

+ T.T. & L AFTER MURPHY DISCOUNTS AND REBATES. O.A.C. Not all offers apply. See dealer for details.



## 2014 CHEVROLET CAMARO ZL1

CONVERTIBLE, RED ROCK METALLIC, 6.2L V8, SUPER CHARGED, AUTO. C5847.

MSRP: \$66,155.

**SALE PRICE: \$52,924**

+ T.T. & L AFTER MURPHY DISCOUNTS AND REBATES. O.A.C. Not all offers apply. See dealer for details.



## 2014 GMC SIERRA 1500

4WW DOUBLE CAB, QUICK SILVER METALLIC, 5.3L V8 AUTO. MSRP: \$46,155.

**SALE PRICE: \$36,924**

+ T.T. & L AFTER MURPHY DISCOUNTS AND REBATES. O.A.C. Not all offers apply. See dealer for details.







**SEE THESE SALES CONSULTANTS FOR QUALITY CAR BUYS!**

Mark Waggoner is "The Credit Doctor"

Credit Concerns?

Apply online at [www.NDcreditDR.com](http://www.NDcreditDR.com)





Pat Murphy  
Dealer



Mark Waggoner  
Credit Doctor



Rick Moe  
Sales Manager



Ben Brewer  
New Cars Manager



Kelly Blomberg  
Fleet Manager



Anthony Thompson  
Business Manager



Dusty Falcon  
Fleet Sales



Wallace Moore  
Sales



Tom Tooley  
Sales



Tony Thompson  
Sales



Jimmy Ramirez  
Sales

*Se Habla Espanol*

1801 2nd Ave. W. Williston, ND Call 1-800-888-2927 or 701-577-2927 •Hours: Mon. 8am-8pm ; Tues.-Fri. 8am-6pm; Sat. 9am-5pm

[www.murphymotors.com](http://www.murphymotors.com)



# A Little Bit Country

## Field Inspected Seed List Now Available

By Warren Froelich, NDSU Extension Agent - Williams County

As the year comes to an end crop growers are beginning to solidify their plans for the 2015 growing season. One decision which often is difficult is choosing the variety. Often growers will give serious consideration to the variety planted the previous season as they were satisfied with the yield and have seed from their own production. However, many growers wish to select a new variety simply because new varieties frequently out produce the old. It wasn't too many years ago when a common yield goal was 30 bushels per acre. These days most growers feel 40-50 bushels are more realistic. This substantial increase must be credited to new farming practices, improved equipment and the research breeding programs which produce larger yields under specific environmental conditions.

If growers are looking for seed of a new variety and cannot find a local source, the first place I recommend is searching the North Dakota Field Inspected Seed publication. This gives a list of growers by crop, variety and location who had fields inspected and approved for further actions which lead to final certification. Final certification is made when seed produced from the inspected field is cleaned by an approved seed conditioner and random samples meet the standards established by the State Seed Department. Such standards include germination, purity, freedom of weed seeds and other crop seeds.

Recently the extension office received several copies of the 2015 growers who had fields inspected. These are available by stopping at the office. The publication also is on the State Seed Departments website, [www.ndseed.com](http://www.ndseed.com).

### Winter Weather Prediction Favorable

Adnan Akyuz, North Dakota State Climatologist emailed me a digital copy of the North Dakota Climate Bulletin which is a quarterly publication of the North Dakota State Climate Office, College of Agriculture, Food Systems and Natural Resources at North Dakota State University. The publication gives a lot of information about weather conditions since September.

The publication reported this autumn was the 43rd coldest on record in North Dakota and it was the 29th driest statewide since 1895.

For the future Mark Ewen's, Consulting Climate Forecaster for the National Oceanic and Atmospheric Administration, believes this month will be warm and dry, followed by a cold and wetter January then a milder but dryer February. For these predictions he uses climate signals (the phase of El Nino, the Arctic Oscillation and others) and the years that these signals have overlapped in the past. Based on the average climate signals for September-November 2014, the years 1951/52; 1968/69; 1969/70; 1979/80; 1985/86; 1994/95 and 2003/04 represent those years most similar to this year. I hope he is correct.

So what is spring going to bring? Allen Schlag, Service Hydrologist at the NOAA's National Weather Service in Bismarck, reminds readers there is no solid idea on how spring is going to unfold as it is so far into the future when it comes to forecasting exact weather and hydrologic conditions for a given day or week. Most weather models only go out ten days in the future.

With this in mind I am anxiously waiting to hear Dr. Leon Osborne, Professor of Atmospheric Sciences at the

University of North Dakota, give his outlook for the 2015 growing season during the Wheat Show on Tuesday, February 3rd.

### Look For New Elm Trees

It looks like two new elm trees will be available this coming year. Both show resistance to Dutch elm disease.

One of them is Prairie Expedition ® which was a lone survivor among a grove of elm trees that died from the disease. This tree is an introduction by NDSU and named in honor of the 200th anniversary of the Lewis and Clark Expedition.

The second is named First Edition St. Croix ®. An arborist was led to a massive 100-year old tree in a front yard outside the Twin Cities. Just as the case with Prairie Expedition, laboratory testing confirmed this tree tolerated Dutch elm disease.

Merry Christmas wishes from our team of staff including Mindy Sigvaldsen, Michelle Garcia, along with Mary and I. We all have families and friends with which to share this joyous holiday season. We hope you can enjoy the same happiness.

MNAXLP

# RoundupWEB.COM

Everything Roundup on the web.

THE GIFT OF COMFORT AND JOY

MON 50% OFF

OFFER VALID 11/02/14 - 01/04/15

SPOT TRACE  
Theft-Alert Tracking Device



As Low As  
**\$49.95**  
AFTER MAIL-IN REBATE

SPOT GEN3™  
Global Satellite GPS Messenger



As Low As  
**\$74.95**  
AFTER MAIL-IN REBATE

GLOBALSTAR  
PHONE  
Satellite Phone



As Low As  
**\$249.95**  
AFTER MAIL-IN REBATE  
Unlimited minutes, \$149<sup>99</sup> per month. See dealer for details.

With SPOT & GLOBALSTAR you can give the gift of life, make crystal clear calls & protect your gifts—all from beyond the reach of standard cell phones.

Call Larry Today At...

**ADVANCED COMMUNICATIONS**

Authorized KENWOOD Dealer

Globalstar

"Your communication headquarters"


Mobile Radios • Pagers • Satellite Telephones

Just North of McDonald's • Sidney, MT | 406-433-1659 • Toll Free: 1-866-433-1659

Dream BIG

FINAL DAYS


Save big now at your local Ford Dealer. The final days of the Dream Big Sales Event are here. Start the new year in America's favorite brand!



2014 **FUSION SE**

**0.0% + \$1000**


APR FINANCING\* CASH BACK\*



2014 **F-150 LTD**

**2.9% + \$1000**

APR FINANCING\* CASH BACK\*




2015 **ESCAPE SE**

**.90% + \$500**

APR FINANCING\* CASH BACK\*

Hurry to your local Ford Dealer today. It all ends January 5.



Go Further

Eagle Country Ford

[www.eaglecountryford.dealerconnection.com](http://www.eaglecountryford.dealerconnection.com)

<sup>1</sup>Based on 2013 CY sales. <sup>2</sup>Dealer will add disclaimer here.

<sup>3</sup>Not all buyers will qualify for special rates. Please see dealer for details on approved credit.



***New Years Eve  
Party Supplies & More!***



# STAND For Our Youth



**Above: Rau Students sing Christmas carols at the Lodge.**



**Left: 6<sup>th</sup> Grade Savage Students, with Zedina head of Matthews House, Kingsland, and Vicky Parker.**

# We'll Pay Your Heating Bill!

**On any single or doublewide home sold & delivered during January, February, March & April.**

**See us for all  
the details.**



**Winter Hours:**  
**Mon-Fri: 9am-6pm • Sat: 9am - 4pm**  
**2308 West Front St. Williston, ND | 701-572-2590**



Submitted by Vicky Parker, District II Drug and Alcohol

STAND is a youth group that meets in schools in Richland County. We are there to support youth in making positive and healthy choices, specifically with alcohol, tobacco, and other drugs. We currently have groups meeting at Savage, Brorson, Rau, and Sidney Middle School.

Savage STAND gathered gifts and goodies for Matthew's House, Brorson did some caroling, Sidney Middle School handed out JOY Coupons, sang, and played music at Crestwood, Rau STAND members headed over to The Lodge and shared some Christmas Cheer.

STAND also has room for adults who are interested in helping with the important challenge of impacting youth in our community. The adult STAND group meets the last Tuesday of the month.

We are very proud of our youth STAND groups who so graciously wanted to share some Christmas kindness!

If you want to know more about the youth or the adult STAND please contact Vicky Parker Project Coordinator 433-4097 Email: [vparkerrc@yahoo.com](mailto:vparkerrc@yahoo.com)

We STAND by our youth, STAND up for our youth and Support our youth as they STAND for themselves!

# Greytak Calendars for Sale

**Submitted by Josie Evenson**

Don Greytak calendars are on sale now. Don Greytak, a pencil artist from Havre, Montana showcases his work in these great calendars. Greytak's portraits illustrate rural life and a down home way of living. The profits from these calendars will benefit the Montana 4-H Foundation. The Montana 4-H Foundation serves as a non-profit corporation that continually supports the state wide 4-H program, which allows youth and leaders to participate in many life changing experiences through the 4-H program. The calendars can be purchased at local financial institutions or the Richland County Extension Office located at 1499 N. Central Ave, Sidney MT. If you have any further questions please call the Extension Office at 406-433-1206.

ONLY 10 LEFT

**Get Yours Before They're Gone!**

# 2014 Ram 2500 SLT Crew Cab



**MSRP..... \$45,920**

**Ryan Discount .....-\$6,998**

**Rebate .....-\$5,000**

**You Pay ..... \$33,922**



**Must qualify for all rebates. Tax title license & doc fee extra.**

**Ryan**  
**MOTO**

**MOTORS 701-577-1111 1212 W 2nd St, Williston, ND**



## RAM