

The Roundup

(406) 433-3306 or 1-800-749-3306
Fax (406) 433-4114
e-mail address:
info@roundupweb.com
www.roundupweb.com

Business Office:
Located at 111 West Main
Sidney, MT

Mailing Address:
P.O. Box 1207
Sidney, MT 59270

Wednesday, May 7, 2014

Volume 40 • Number 12



Sidney FFA Banquet

The Sidney FFA Club held their annual banquet on May 1 at the Sidney High School. Pictured above Sidney FFA members proudly display the cake commemorating the 75th birthday of the Sidney Chapter. Members shown are front (L-R) Emily Schaff, Rian Cobb and Daria Anderson. Middle (L-R) Ryan Steinbeisser, Casey Christensen and Marianne Gartner. Back row (L-R) Garret Leland, Chris Gartner, Ethan Chamberlain and Jeremy Rhines.

Club advisor Ted Fulgham recognized each FFA member to congratulate them on their work throughout the year. Fulgham also expressed a special thanks to the Sidney High School Cafeteria/Janitorial staff, the Sidney FFA Alumni, Vanessa Pooch, Colin Gartner, James Brower, Tractor Supply Company and Border Steel for their contributions to the club throughout the year.

Watford City, North Dakota Celebrates its 100 Years in June – Festival Vendors Wanted

Submitted by Doug Bolken

The City of Watford City will be celebrating its 100th year the last weekend in June and we need Art, Craft & Commercial Vendors to help in the celebration.

Our Centennial festivities begin on Thursday, June 26 with a dedication of our new Centennial Park and end on Sunday, June 29th with a non-denominational church service.

The highlight of this event is our two day Centennial Festival which is set among the trees and along the creek of the City Park and McKenzie County Fairgrounds. Vendors will be able to display their product throughout the festival.

Our Festival Main Stage Events include: Native American Dancers, Baby Pageant, Magic Keith, Music with Jeff Nelson, Medora's Burning Hills Cloggers, Blake Krabbseth Magician, Merrill Piepkorn & the Radio Stars/Old Time Music. We are featuring musical acts of Quintana Biffert, The Taylors and The Dwaylors, Tom Brosseau, Mr. Feelgood and the Firm Believers, Whiskey Rebellion, Six Appeal, Tigirlily and 32 Below.

Along with these Main Stage Events, we are including Jumping Castle & Games, Clowns, Face Painting, Balloons, Hands-On Interactive Games for the Kids and are having our own film festival featuring local films: 6 Brothers, Cowboys & Crude and Small Town Soldiers.

The excitement doesn't stop here; we will be having events



Park.

We are expecting to have 5,000 attendees at our Centennial Celebration. If you are an Art, Craft or Commercial Vendor and would like to be part of our festival please contact us. Vendor information and application can be found at www.watfordcitycentennial.com or by contacting Amanda Kieson at 701-842-6831 or Whippinstitch@yahoo.com.

www.watfordcitycentennial.com

The Watford City Centennial Steering Committee is comprised of Patsy Levang, Chairperson, plevang@yahoo.com, 701-570-2493; Jan Dodge, Exhibits & Film Festival, Jandodge74@gmail.com, 701-570-2493; Doug Bolken, Marketing, dbolken@co.mckenzie.nd.us, 701-444-5804; Sandi Sanford, Centennial Book, sandiandbrent@ruggedwest.com, 701-570-4588; Kristin Bolken, Special Events, kbolken@mckenziehealth.com, 701-842-4606; Lindsay Wingerter, Homefest & Art in the Park, wchomefest@gmail.com, 701-580-0587.

throughout the city - Centennial Parade down Main Street; All School Reunion at the High School; Trish Gravos Memorial Golf Scramble and Steak Fry at the Fox Hills Golf & Country Club; Threshing Demonstration at Heritage Park and a rousing Alumni Baseball Game at Legion

Richland County Centennial Celebration June 13-15

Richland County will celebrate its 100th birthday with a huge party June 13-15. Enjoy free concerts by Rob Quist & Great Northern Friday night, and Sawyer Brown Saturday night, plus free BBQs each night. Airplane ping pong ball drops each afternoon will provide excitement and prizes to those lucky enough to pick up a specially marked ball. Local and children's entertainment will please all ages, while vendors will satisfy thirst and hunger pangs. Each evening, Dan Hunthausen & the Train Wrecks will provide entertainment in the beer garden. All take place at the Richland County Fairgrounds.

Self-guided community/historical tours will take



place both days and the Sidney-Richland County Library will provide History tours.

The Sidney Kiwanis Club will host its Pie Social Friday at the courthouse and kids of all ages are encouraged to take part in the Sidney-Richland County Library Children's Street Fair.

Saturday starts off with

the Centennial Parade at 10a.m. Please submit your entry to the Sidney Chamber of Commerce or go to the centennial website.

The Senior Coalition is sponsoring a Color Run at noon starting at Peterson Park. There is a registration fee of \$25 which will go to the Coalition for their activities.

Activities at the Fairgrounds Saturday afternoon include a Pedal Tractor Pull presented by Sidney FFA Alumni. Registration starts at 1 with the pull beginning at 2. Past and present county officials will be honored, as well as the Centennial Farms. There will also be an FFA Time Capsule presentation.

Sunday starts off with

the centennial breakfast and church service, followed by the finale of cake and a balloon release at the Richland County Fair Event Center.

Vendors and local entertainment are still needed. Vendors can contact Libby Berndt or Kris Weltikol, while entertainers can contact Tom Pavak or Jennifer Neilsen.

Committee members:

Jamie Larson
Benjamin Clark
Kris Weltikol
Libby Berndt
Jacki Young
Marci Albin
Jodi Berry
LaVanchie Starkey
Angie Nelson
Amelia Spade
Fred Lake

'E-rase Your E-waste' 10th Annual Collection Event This Weekend



Submitted by Beth Redlin

E-rase your E-waste invites you to celebrate our 10th anniversary year by bringing your damaged and/or outdated electronic equipment to our joint recycling events in Sidney and Fairview this weekend. E-rase your E-waste has recycled more than 154 Tons of electronic waste during the past 10 years and we'd like to, again, add substantially to that total in 2014.

The dates for this year's spring weekend collection in Sidney are this Friday and Saturday, May 9-10, with a joint mini collection in Fairview on Saturday morning, May 10, as part of that community's annual Citywide Cleanup event.

Yellowstone E-waste Solutions of Billings is again the e-cycler for the event and provide their services for FREE, with two small exceptions. Participants wanting their hard drives removed from their computers will need to pay a small fee of \$5 for removal. In addition, those needing documentation certifying that their hard drive has been destroyed will also be charged a \$5 fee.

Sidney Collection:

Again, the collections in Sidney and Fairview are all FREE as noted above! The Sidney E-rase your E-waste events will be held as usual at the Richland County Shop at 2140 W. Holly in Sidney, next to the Fairgrounds. Signs will be posted. Times for both spring and fall events in Sidney are Fridays 3-7 pm and Saturdays 9-3 pm. Please note, the county shop is available for drop offs during event times ONLY, when Yellowstone E-waste Solutions employees and local volunteers will be available to help with loading and unloading.

Note, too, that anyone in the MonDak region, or even outside it, is welcome to bring their electronic items to the Sidney E-rase your E-waste collection site during regular event hours. You do not need to be a Richland County resident to participate.

Fairview Collection:

In Fairview, items will be accepted at the Fairview Fire Hall from 8 a.m. to noon on Saturday, May 10, Fairview chamber organizers said. Note, that NO items, either regular trash or e-waste, will be accepted after the 12 pm deadline in Fairview; however, Fairview senior citizens and others needing help transporting their e-waste to the Fairview event can call City Hall at 742-5616 to arrange assistance through Friday. On Saturday, those needing help in Fairview can call 489-2624.

What Can I Bring?

Nearly all electronic devices are accepted, including computers and their components (printers, scanners, keyboards, etc.), cell phones, cameras, TVs, VCRs, cable TV boxes, fax machines, copiers, stereos, game boys and specialized electronic equipment used in businesses such as hospitals, law enforcement and manufacturing and even the oil fields.

Please note, however, that NO consumer white goods, light bulbs, CFLs, mercury thermometers, alkaline batteries, or items containing refrigerants (including dehumidifiers), oils, or acids will be accepted. If you are unsure whether your item qualifies you can check out the handy "What to Bring..." handout posted on the USDA-ARS Northern Plains Agricultural Research Lab's e-waste website at www.ars.usda.gov/npa/npar/ewaste or call Jackie Couture at 406-433-9422. In addition, a handy "Items List" recycling form is also available at the website to further speed processing time for participants bringing both large and small amounts.

Local businesses, agencies and organizations with large amounts to e-cycle are asked to make an appointment to drop off their items also by calling Jackie Couture at 406-433-9422. Please leave a message.

Where possible larger recyclers are also encouraged to palletize their own items, or send extra staff to help get it done. Details on acceptable items and how to palletize them can be found in the "What to Bring..." handout posted to the USDA-ARS Northern Plains Agricultural Research Lab's e-waste website as noted above.

Fall Collection Also Planned:

For those unable to participate in this weekend's events, we are also hosting a second collection this fall (in Sidney only) the weekend of Sept. 5-6. Please consider joining us then.

The "E-rase your E-waste" effort in Sidney is coordinated by members of the Richland County Local Emergency Planning Committee (LEPC), Richland Opportunities Inc., and volunteers with other community organizations including the RSVP program. The Montana Department of Environmental Quality has also committed funds for advertising the 2014 event and the Richland County Public Works Department makes their facilities available for the collection event in Sidney.

For all your Farm/Ranch,
Recreational, Residential,
and Commercial needs.

Jim & Janice Knudsen
Broker/Owners
email: alans@midrivers.com
Website: www.missouririverrealty.com



Alan
Seigfreid
Amanda
Seigfreid

120 2nd St. N.E. • Sidney Mt. 59270
(O) 406-433-3010 • (C) 406-489-3010



Yellowstone Chiropractic Clinic
(406)-433-4757 222 2nd. Ave. SW
1-866-433-4757 Sidney, MT 59270

Dr. Ryan Laqua
Chiropractic Physician &
Certified Medical Examiner

• Sports Injuries • DOT Physicals
• Personal Injuries & Pain Conditions



Coordinated by: Richland Co. LEPC, ROI, and USDA-ARS-NPARK

**e-rase your
e-waste!**

...at our tenth annual
community e-cycling event!



Fri-Sat, May 9-10

Times:
Friday, May 9th: 3 p.m. - 7 p.m.
Saturday, May 10th: 9 a.m. - 3 p.m.

Location:
Richland County Shop in Sidney
2140 W. Holly (by fairgrounds)

Cost:
FREE!

Collection in Fairview, too!

Saturday, May 10, 8 a.m. - Noon

Fairview’s annual City Wide Clean-up Day will include **FREE** e-waste recycling at the city Firehall! Seniors or others needing assistance may call City Hall at 742-5616 through Fri., or 489-2624 on Sat.

For more info, visit our website at www.ars.usda.gov/npa/npark/ewaste

AREA RECOVERY GROUPS

MONDAYS:
Noon — AA Group Trinity Lutheran Church Ed. bldg., 214 S. Lincoln Ave, Sidney.
1 - 3 p.m. — Grief Recovery Support Group in First Lutheran Church, Fellowship Room, Watford City.
6 p.m. — Al-Anon, Trinity Lutheran Church Ed. bldg., 214 S. Lincoln Ave, Sidney.
7 p.m. — Fairview Alive and Kicking at Fairview Alliance Church, 704 S. Western Ave.
8 p.m. — AA Group, Northern Pump & Compression, Watford City. Call 770-3603 or 770-2675 for directions or ride.

TUESDAYS:
7 p.m. — AA Group Trinity Lutheran Church Ed. bldg., 214 S. Lincoln Ave, Sidney.

WEDNESDAYS:
5:00 p.m. — Sober Life Young People’s NAAA 12- step recovery group, 25 yr. old & younger, Trinity Lutheran Church Ed. bldg., 214 S. Lincoln Ave, Sidney.
8 p.m. — Al-Anon, Sanford Room, McKenzie Co. Public Library, Watford City.

THURSDAYS:
7 p.m. — NA meeting, MonDak Trucking office Bldg., 725 W. Holly, Sidney.
8 p.m. — AA Group, Northern Pump & Compression, Watford City. Call 770-3603 or 770-2675 for directions or ride.

FRIDAYS:
6:30 - 7:30 p.m. - 5 Stones faith based recovery meeting, Sidney Nazarene, 606 9th St. SW, Back door is open.
7 p.m. — **Watford City area Celebrate Recovery**, Assembly of God, 2117 S. Main. For help call Robert 417-296-2809 or Stephanie 417-296-2810.
8 p.m. — AA meetings, Trinity Lutheran Church Ed. Bldg, Sidney.

SATURDAYS:
7P.M. — AA 24 hour group, Northern Pump & Compression, Watford City. Call 770-3603 or 770-2675 for directions or ride.
9 a.m. & 7 p.m. — AA Group Trinity Lutheran Church Education bldg., 214 S. Lincoln Ave, Sidney.

SUNDAYS:
7 p.m. — AA Group Trinity Lutheran Church Ed. bldg., 214 S. Lincoln Ave, Sidney

STATISTICS

LAKE WATER LEVEL REPORT

	Sakakawea	Fort Peck
Current Elevation.....	1837.4	2226.1
Last Week’s Elev.....	1837.2	2225.7
One Year Ago.....	1828.2	2223.2
Release For Day (C.F.S.).....	26,000	7,900

WATFORD CITY WEATHER DATA

Source: North Dakota Agricultural Weather Network

Date	High	Low	Precip.
April 28.....	NA	NA	NA
April 29.....	NA	NA	NA
April 30.....	NA	NA	NA
May 1.....	NA	NA	NA
May 2.....	NA	NA	NA
May 3.....	NA	NA	NA
May 4.....	NA	NA	NA
YTD Rainfall.....			22.44

SIDNEY WEATHER DATA

Source: MSU Eastern Agricultural Research Center

Date	High	Low	Precip.
April 28.....	40	32	0.62
April 29.....	48	33	0.09
April 30.....	60	35	0.00
May 1.....	69	35	0.00
May 2.....	59	46	0.03
May 3.....	50	38	0.00
May 4.....	42	35	0.03
Average YTD Precipitation.....			2.17

OBITUARIES

Matthew Brenner, 24, Sidney, MT

Funeral services for Matthew Brenner, 24, of Sidney where at 2 p.m., Friday, May 2, 2014, at the Sidney High School gym with Pastor Vicki Waddington of Lonsdale United Methodist Church officiating. Fulkerson Funeral Home of Sidney handled the arrangements. Remembrances, condolences and pictures may be shared with the family at www.fulkersons.com. Matthew died on Monday afternoon, April 28, 2014, at the Sidney Health Center.

Randal “Randy” Kringen, 56, Sidney, MT

Funeral services for Randal “Randy” Kringen, 56, of Sidney were at 3 p.m., Saturday, May 3, 2014, at the Richland County Event Center with Pastor George Karres of Pella Lutheran Church officiating. Cremation followed services under the direction of Fulkerson Funeral Home of Sidney. Remembrances, condolences and pictures may be shared with the family at www.fulkersons.com. Randy died on Monday morning, April 28, 2014, at the Sidney Health Center.

Elaine Deg, 91, Sidney, MT

Memorial services for Elaine Deg, 91, of Sidney, MT were at 11 a.m., Monday, May 5, 2014, at Trinity Lutheran Church in Sidney with Pastor David Warner officiating. Cremation followed Sunday visitation under the direction of Fulkerson Funeral Home, Sidney. Remembrances, condolences and pictures may be shared with the family at www.fulkersons.com. Elaine died on Tuesday, April 29, 2014, at the Billings Clinic, Billings, MT.

Montana Department of Revenue Warns of Email Scam

Submitted by Mary Ann Dunwell

Helena — The Montana Department of Revenue is warning people about a new email scam that could potentially harm computer systems, and steal identities and financial information. These email messages target people in and out of state. They are not from the department and the department recommends that people delete these fraudulent email notifications.

Taxpayers are receiving email messages with a variety of subjects, one that claims they owe money to the Montana Department of Revenue.

“We consider these scams to be serious threats to the public,” said Revenue Department Director Mike Kadas. “We want to assure people that we’re being vigilant and taking necessary measures to advise the public of these threats in a timely manner.”

The scam messages do not contain Montana phone numbers or mailing addresses. Most important, the department does not initiate contact with our customers through email. All notifications regarding money owed would be sent through the U.S. Postal Service with the official State of Montana, Department of Revenue letterhead.

This is another reason people should keep virus shield software active and updated on all electronic devices.

Officials discovered this scam today when the call center began receiving calls about this scam from people both in and out of state.

If you have questions about emails you may have received, please don’t hesitate to call our call center toll free at (866) 859-2254, or in Helena at 444-6900. Regular call center hours are Monday through Friday, 8 a.m. to 5 p.m.

For more information about guarding against identity theft and what to do if you think you’ve become the victim of the crime, call the Montana Department of Justice, Consumer Protection Office at 1-800-481-6896 or email contactocp@mt.gov.

A Steak in Ag

Submitted by Laurel Masterson

R-CALF USA may be defined as a non-profit producer organization, but our work benefits anyone who eats meat and lives in an economy that includes agriculture. We’re more than a producer organization, we’re your organization!

Country-of-Origin Labeling (COOL): The fight’s not over. The decision we wrote about last month by the D.C. Court of Appeals has been vacated. Now, an En Banc hearing — a hearing with all 11 judges seated at the D.C. appellate court instead of the 3 at the initial hearing — has been scheduled for mid-May. This hearing will decide what standard must be used to determine if country-of-origin labeling violates the meatpackers’ free speech.

CEO Bill Bullard featured speaker at TPP event.

On April 17, R-CALF USA CEO Bill Bullard spoke during a Transpacific Partnership (TPP) free trade agreement forum in Washington, D.C. This event was hosted by The American Bar Association.

We Urged Secretary Jewell to Cease Armed Confrontation with Nevada Rancher.

In a recent letter, we urged U.S. Department of the Interior, Sally Jewell, to cease her ongoing efforts to confiscate cattle owned by Nevada rancher Cliven Bundy and his family.

We made no judgment regarding the non-payment of grazing fees by the Bundys, but we did express our concern for the aggressive actions of the Department of the Interior.

We submitted comments in opposition to USDA’s plan to import fresh beef from FMD-affected Brazil.

We criticized the plan by the USDA, Animal and Plant Health Inspection Service (APHIS) to relax United States’ border protections to allow the importation of fresh beef from 14 Brazilian states, even though Brazil is not a country free of foot-and-mouth disease (FMD).

We also included numerous arguments to refute APHIS’ claim that the risk of introducing FMD would be adequately mitigated under the proposed rule.

Additionally, we submitted comments urging the U.S. Air Force should utilize less populated areas for training.

In these comments we urged the Federal Aviation Administration to seek other options rather than to expand the Powder River Training Complex in Montana, Wyoming, North Dakota and South Dakota.

We also argue that the U.S. Air Force should utilize less populated areas for military flight training rather than the proposed location that will affect about 11,000 ranching operations that generate approximately \$886 million in annual revenues.

All letters, comments and presentations mentioned above are available at www.r-calfusa.com.

The Meat Racket is still for sale through R-CALF USA. We’re able to offer it at the discounted price of \$25 (retail \$28). To order: Send \$25 to R-CALF USA Box 30715, Billings, MT 59107 with The Meat Racket in the memo line or call 406-252-2516 and order with a credit card.

R-CALF USA is solely funded by donations and member dues. Please consider becoming a member. For more info or to join, go to www.r-calfusa.com, 406-252-2516.

*Beautiful Flowers for
your Beautiful Mother!*

*Come in or call us for
florals, plants, candy
bouquets & gifts!*

Petals
floral and more
701-842-2867

Pre-orders preferred
512 N Main • Watford City
Purple House
On North Main St. By Hospital



**The
Roundup**

**Do you have news or photos from
McKenzie County you would like
in The Roundup?**

CONTACT:
Kathy Taylor in Watford City
701-842-6188

EVENTS

SEND US YOUR EVENTS!
THE ROUNDUP: PO Box 1207
111 West Main • Sidney, MT 59270
406-433-3306 • Fax: 406-433-4114 • Email: classads@esidney.com

Richland County

Events in Sidney unless otherwise listed. MT Zone.

Thurs., May 8
12 - 8 p.m. — Sidney High School 63rd Annual Howard Eicholtz Spring Exhibit, Sidney High School.

Fri., May 9
6:30 - 7:30 a.m.— Men’s Breakfast Fellowship, Sidney Lutheran Brethren Church.
8 a.m. - 12:30 p.m. — Sidney High School 63rd Annual Howard Eicholtz Spring Exhibit, Sidney High School.
11:30 a.m. — Sidney Senior Citizen Center will be hosting a meal. For more info call 406-433-8077.
3 - 7 p.m. — E-rase your E-waste, Richland County Shop, 2140 W. Holly (by fairgrounds).
6:30 p.m. — Battle of The Big Horn, MonDak Heritage Center, Free & open to the public.
6:30 pm — 5 stone drug and alcohol recovery meeting, Sidney Church of Nazarene, 606 9th ST. SW, back door is open.

Sat. May 10
8 a.m. - noon — E-rase your E-Waste, Fairview Fire Hall.
9 a.m. - 3 p.m.— E-rase your E-Waste, Richland Co. Shop, 2140 W. Holly, Sidney.
10 a.m. - 4 p.m. — Fun Sew & Needle Art, Nazarene Church, 606 9th St. SW. Just bring a project to work on and have some fun.
7 -11 p.m. — Spring Fling semi-formal dance for 6th - 8th grade, St. Matthew’s Parish Center. \$8 per person. Dress code for boys is no blue jeans, shorts or t-shirts. Dress code for girls is no shorts or pants. Students will only be allowed to leave early if picked up and signed out by a parent.

Sun., May 11
1 p.m. — Savage Senior Center cards & potluck .
6:45 p.m. — Sidney Moose Lodge Bingo, Main Session 7:00 p.m.

Mon., May 12
5:30 p.m. — Sidney Lion’s Elementary track meet, Sidney High School track.
11:30 a.m. — Sidney Senior Citizen Center will be hosting a meal. For more info call 406-433-8077.
6:30 p.m. — Sidney Moose Lodge Pinochle games.

Tues., May 13
6 p.m. — Sons of Norway will be celebrating Syttende Mai , 714 E. Main St. Come join us for a catered meal (\$14) and entertainment celebrating the 200th anniversary of Norwegian Constitution Day! Please RSVP by May 5 to Mark at 488-6228.

Thurs., May 15
1 - 4 p.m. — SuperHost training, Sidney Elks Lodge. Refreshments provided. Please call the Sidney Chamber at 433-1916 to register, there is no cost to attend.
7 p.m. — American Sewing Guild, MSU Extension Building. Contact Laurie for more info. 701-481-9900.

May 6 - May 31
Exhibit: Annual Custer County Juried Art Show, MonDak Heritage Center.

McKENZIE COUNTY

Events in Watford City unless otherwise listed. CT Zone.

Thurs., May 8
12 p.m. - 2 p.m. — McKenzie Co. Food Pantry, lower level of the First Lutheran Church, 212 2nd Ave. NW, Watford City, Cash Wise food giveaway, for more info or to set up an appt. call 701-444-3451 or www.mcfoodpantry.com.
7 p.m.— Pinochle, Watford City Senior Center, 205 5th St. NW, for more info call 842-3760.

Fri., May 9
7 p.m. — Watford City area Celebrate Recovery, Assembly of God, 2117 S. Main. For help call Robert 417-296-2809 or Stephanie 417-296-2810.

Mon., May 12
1 - 3 p.m. — Grief Recovery Support Group First Lutheran Church, Fellowship room, Watford City.

Weds., May 14
7 p.m. — If you are interested in starting a slow pitch softball team or would like to join a team please contact Keith Larson at 701-580-8380. Watford City Golf Course, second meeting.

Mon. & Tues., May, 20 & 21, 2014
Watford City Area Chamber of Commerce presents, Deborah Dragseth, PH.d. Professional Development training, all classes held at Teddy’s Residential Suites, 113 9th Ave. SE, Watford City.

**View all monthly events on our calendar at:
www.roundupweb.com**



African Children’s Choir to Perform in Sidney May 7

Submitted by Lydia Sherwood

The African Children’s Choir melts the hearts of audiences with their charming smiles, beautiful voices and lively African songs and dances. The program features well-loved children’s songs, traditional Spirituals and Gospel favorites. Concerts are free and open to all. A free-will offering is taken at the performance to support African Children’s Choir programs, such as education, care and relief and development programs.

Music for Life (The parent organization for The African Children’s Choir) works in seven African countries such as Uganda, Kenya, Rwanda, Sudan, Nigeria, Ghana and South Africa. MFL has educated over 52,000 children and impacted the lives of over 100,000 people through its relief and development programs during its history. MFL purpose is to help create new leadership for tomorrow’s Africa, by focusing on education.

The African Children’s Choir has had the privilege to perform before presidents, heads of state and most recently the Queen of England, Queen Elizabeth II, for her diamond jubilee. The Choir has also had the honor of singing alongside artists such as Paul McCartney, Annie Lennox, Keith Urban, Mariah Carey, Michael W. Smith, and other inspirational performers!

Most recently, the African Children’s Choir accompanied South African opera singer, Pumeza Matshikiza, on some tracks for her debut album which was recorded at Abbey Road Studios in London.

Promotional support of this community concert is greatly appreciated.

The African Children’s


Choir is a nonprofit humanitarian and relief organization dedicated to helping Africa’s most vulnerable children today so they can help Africa tomorrow. No tickets, donations welcome.

The performance will take place May 7, 2014, at the Lonsdale United Methodist Church in Sidney, MT.

Memorial services for

Kirstin Wiseman

Daughter of Brian & Cyndi Wiseman



Will be held at the Sidney High School
Gymnasium on Wednesday, May 7th at 2:30 p.m.

Mother’s Day Brunch

Sunday, May 11

11am - 2pm at the
Waterhole Event Center

Kids Welcome!



406-742-2274
Fairview, Montana

Mother’s Day Specials

SUNDAY, MAY 11TH

Serving starts at 11am

-Crab Stuffed Tilapia
Served on a bed of fettuccini tossed in a lemon cream sauce with bacon & Asparagus

-T-Bone Steak (24oz)

New “Late Nite” Menu
Fri-Sat: 10pm - 12:30am



Sidney, MT
433-7174 • www.cattleac.com

BRIGHTEN YOUR HOME THIS SPRING

OPEN HOUSE

SAT, MAY 10 • 9-6PM | SUN, MAY 11 • 10-4PM



Many New Items For Spring!

VARIETY OF BASKETS & FLOWERS
AND A LARGE SELECTION OF BLOOMING PLANTS!

ANNUALS • PERENNIALS • VEGETABLES • HANGING BASKETS
FERTILIZER • SEED POTATOES • POTTING SOIL • ONION PLANTS
PERENNIAL GRASSES • BLOOMING PLANTS • HYBRID PETUNNIAS

Yellowstone Valley Greenhouse

Mon-Fri: 9am - 6pm • Sun: 10am - 4pm | Rain or Shine
35247 Cty Rd 127 • Sidney, MT | 406-482-8051
2 miles north of Sidney on Hwy 200, turn east on Cty Rd 127, paved road to 4-way, east 1/2 mile on left

FOR MOTHER, WITH LOVE

Arrangements | Grab-n-Go Bouquets
Plants | Balloons | Cards




Special Orders Must Be Placed
by Friday, May 9th

Fri & Sat Delivery Available
Floral Dept. Open Mother’s Day: 8am - 2pm | 433-7673
Customer Service Rep. Will Be Available to Assist Picking up Orders.



Reynolds MARKET

Same friendly people. Same great prices.
Part of the community since 1925
The Shops At Fox Run • 404 N. Central Ave • Sidney
6am - 10pm Daily | www.reynoldsmarket.com | 406-433-2305



**Judy Myllymaki
Barrel Racing
Clinic**

May 31 & June 1
at the Sidney
Saddle Club

Contact mjbrunsvold@hotmail.com | 406-488-1054



PARTY CENTRAL

GRADUATION IS HERE
SHOP NOW & SAVE!

25-50% OFF
ON SELECT GRADUATION ITEMS

**MOTHER'S
DAY SPECIALS**

ALL YOUR AREA SCHOOL COLORS!
BALLOONS • COLORED POPCORN • GIFTS
DECORATIONS • TABLEWARE • PERSONALIZED NAPKINS

MON: NOON-5:30PM • TUES-FRI: 10AM - 5:30PM
SAT: 9AM - 4PM • SUN: CLOSED

105 East Main Street • Sidney, MT | 406-433-4FUN | www.partycentralandgifts.com



Sidney Soccer Action

Sidney U16 team defeated Miles City’s U19 by a score of 1-0. Sidney’s Alec Lovegren scored the winning goal. Sidney also came out on top over Lewistown by a score of 3-0. Lovegren scored two goals and Cale Bandelin scored one. The Sidney U19 team will travel to Laurel May 10. Above: Timothy Peterson kicks the ball vs Lewistown. (Photo by Heather Johnson)

Sidney Students
of the Month



Laura Elmore
Laura Elmore

I am pleased to report that the Student of the Month for the month of April is Laura Elmore. Laura is the 1st period attendance aide for Charlie Clock. Laura has a very pleasant and friendly demeanor. She has a genuine concern for the feelings of others. Laura greets visitors in the office with a warm smile and answers questions in a gracious manner. Her responsibilities include filing, answering phones and making copies among other office related tasks. Laura has an excellent work ethic



Sam Reid
Sam Reid

while completing her assigned duties and does so with a positive attitude. She does everything that is asked of her without complaint and asks for any extra work to keep herself occupied. Laura is an outstanding person who possesses the positive qualities which make her a valuable asset to the office staff. She is the daughter of James and Melissa Elmore and Mary Elmore. The Mathematics Dept is happy to recognize Sam Reid as the student of the month. He is the son of Gary and Hyunae Reid. Sam is currently



Yarenci Gonzolez
Yarenci Gonzolez

taking Calculus, the most advanced mathematics class at the high school. Sam has a curious mind, and often asks questions beyond the scope of his assignments to help deepen his understanding of the topic. Sam has challenged himself his senior year with a rigorous set of courses to prepare him well for his career goal. He was intrigued by a visit from a petroleum engineer to the classroom last year and set that career as his goal. He has since researched what he needed to do meet that goal and has worked very hard to be prepared to enter Montana Tech next year and be successful.

Sidney Duathlon

Submitted by Tim Fine

The Richland County run and bike club will be hosting the Sidney Duathlon on Saturday, June 7. The duathlon will consist of a 5k run-10k bike-and an additional 5k run. This Run-Bike-Run will start at 8 am mountain time with registration from 7am to 7:45 on Saturday, June 7th at Meadow Park in Sidney. It is competitive with prize money for the top places for individuals and teams and many door prizes. The race will begin at Meadow Park with a 5k that will go through the northwest portion of Sidney. Single participants, teams of two, or teams of three can compete in this race in their respective divisions. Registration is \$20 per person prior to May 23rd. After May 23rd it is \$35 per person. Check our website for the race course and more information <http://www.runsidney.com>. For more information, feel free to contact Tim Fine at 489-1914.



GIVE YOUR OLD ELECTRONICS NEW LIFE

PACIFIC RECYCLING

When it comes time to retire your electronics, bring them to Pacific Steel & Recycling for the best prices and service. We'll make sure they get a new purpose with our environmentally friendly recycling process. Plus, you can trust us to keep your personal information secure until final destruction.

Serving the MonDak for Over 70 Years!
406-433-1301 | 35023 County Road 123 • Sidney, MT | PACIFIC-RECYCLING.COM

MOTHER'S DAY

Gifts & Sweets



MT West & Other Purses • Scarves • Luggage
Jewelry • Russel Stover Chocolates
Woodwick Candles • Kitchen Items
Fragrances • National Brand Gift Cards
Mother's Day Cards

**Barrett Pharmacy
& Variety**



701-842-3311
145 Main • Watford City, ND
Mon - Fri: 9am - 6pm
Sat: 9am - 5pm

Check Out All These Fine Lines For Mother's Day!

**MT Silversmiths • Taylor Brands • Cowgirl Tough
Cruel Girl • Southern Tread**

**25% All Womens' Jeans
Now Through Mother's Day**

See Us For All Your Western Needs!

SADDLES & TACK
SADDLE UP
WESTERN WEAR
WATFORD CITY, ND

109 6th Ave SE, Watford City, ND
701-842-2629
www.saddleupsaddlesandtack.com

Motorcycle Safety Awareness Month Highlights Deadly Season - Motorists and Riders Have Responsibility to Prevent Deaths

Submitted by Jim Morrow
As the season warms, the number of motorcycles on Montana roads will increase—and so will crashes. Motorcyclist deaths in Montana increased 50 percent in 2012 and more than 13 percent again last year.

“We all want to have fun and enjoy our favorite recreation, but motorists and motorcyclists need to safely share the road—see and be seen,” said Jim Morrow, director of Montana Motorcycle Rider Safety (MMRS). “Motorcycle Safety Awareness in May is an opportunity to remind everyone they have a responsibility to be aware of other vehicles and prevent a tragedy from happening,” said Morrow.

Approximately 80 percent of reported motorcycle crashes result in injury or death while the figure for automobile crashes is about 20 percent, according to motorcycle safety information from the National Highway Traffic Safety Administration (NHTSA).

Drivers can overlook motorcyclists because they are smaller and have a lower profile. Because of the smaller size, drivers can also misjudge how close a motorcycle is, and how fast it is going, according to Morrow.

“People often see what they expect to see. If you are not thinking about motorcycles, your brain may not perceive a motorcycle,” said Morrow. “The cool weather has kept riders off the roads, so drivers aren’t used to them yet. Now its time to be alert for motorcycles, on all roads, all the time,” he added.

Research from NHTSA shows that per vehicle mile traveled, motorcyclists are about 39 times more likely than passenger car occupants to die in a crash. A majority of collisions involving a motorcycle and another motor vehicle tend to occur at intersections or during a lane change. Morrow encourages motorists to actively search for an approaching motorcycle before entering or changing lanes.

“Check your mirrors and your blind spot,” said Morrow. Motorcyclists also have a responsibility to keep themselves safe. A substantial number of motorcycle fatalities are single vehicle crashes.

“Distraction, speed, not wearing a helmet, operator error—these are all elements that contribute to injuries and deaths for motorcycle riders,” said Morrow. “Wear your protective gear, make sure you are visible, stay within speed limits—and always ride sober,” he advised.

The right riding skills are also critical to motorcyclist safety. The purpose of the Montana Motorcycle Rider Safety program is to teach riders of all levels how to improve their safety.

“More skilled is more safe,” said Morrow. “Our highly trained rider coaches can help even advanced riders break bad habits and avoid common problems that cause crashes,” he said.

More information about rider courses can be found at motorcycle.msun.edu.

Montana Motorcycle Rider Safety offers these tips for drivers and motorcyclists.

Drivers can help keep motorcyclists safe by their own driving habits:

Respect all other vehicles on the road.
Allow a motorcyclist the full lane width—never try to share a lane.

Perform a visual check for motorcycles by checking mirrors and blind spots at intersections and before entering or exiting a lane of traffic.

Always signal your intentions before changing lanes or merging with traffic.

Don’t be fooled by a flashing turn signal on a motorcycle; wait to be sure the motorcycle is going to turn before you proceed.

Allow more following distance—three or four seconds—behind a motorcycle so the motorcyclist has enough time to maneuver or stop in an emergency.

Never tailgate. In dry conditions, motorcycles can stop more quickly than cars.



- Focus on driving and don’t get distracted.
- Never drive while impaired.
- To keep themselves safer, motorcyclists should:
- Avoid riding in poor weather conditions.
- Wear brightly colored protective gear and a DOT-compliant helmet.
- Use turn signals for every turn or lane change, no matter what other vehicles are around.
- Combine hand signals and turn signals to draw more attention to themselves.
- Use reflective tape and stickers to be more conspicuous.
- Use lane position to be most visible to other drivers.
- Never drive while impaired.
- Continue to build safe riding skills.



Everything Roundup on the web.

Fairview Clean Up Day May 10

The Annual Cleanup Day in Fairview will take place Saturday, May 10. Everyone is encouraged to clean up after the long cold winter and take advantage of the dumpsters, which will be placed at the Fire Hall, from 8 am to noon.

Due to the positive response last year, the Fairview Chamber will again host an erase your ewaste event from 8 am until noon in conjunction with the cleanup. Bring your electronic items for recycling, and save the landfill from unnecessary contamination.

Anyone needing help with trash or electronics is asked to call Fairview City Hall at 742-5616 Monday through Friday or call Ray at 489-2624 on Saturday morning.



The Ultimate in Remote Control Hobbies

Brushless Electric - Greater Speed and Reliability

GAS & ELECTRIC CARS, TRUCKS, PLANES, BOATS AND HELICOPTERS



701-577-1032

Located In Chaney's Total Auto

Montana

PADDLEFISH SEASON

Starts May 15

SEE US FOR:

Rods • Gaffs • Weights

Hooks • And More!

We Sell MT Fishing Licenses!



Archery Range Now Open!

HIGH CALIBER SPORTS

Mon-Fri: 9am - 6pm • Sat: 9am - 6pm
440 N Central Ave • Sidney, MT
Shops at Fox Run • 406-433-1800

Join us at our

Open House

Sat & Sun, May 10th & 11th



THE OASIS GREENHOUSE

Come see us, we grow smiles!

3½ miles north of Fairview on Hwy 58

701-744-5752 | oasis@midrivers.com

Tues - Sat: 9am - 6pm • Sun: 1pm - 5pm

TREAT MOM TO THE SOUTH 40 FOR MOTHER’S DAY!



SERVING 10:30AM - 9PM:

BAKED HAM, POT ROAST, PRIME RIB, BABY BACK RIBS, BAKED CHICKEN, STEAK & SEAFOOD SELECTIONS

Karaoke Every Wed, Fri & Sat At 9pm!

NEW! Draft Night Tuesdays! \$2 off Pitchers

Ladies Night! 8pm - 11pm • Wednesdays \$2 off all Martinis & Blender Drinks

Now Hiring Bartenders & Grill Cook

Call 406-433-4354 for job descriptions or apply at job service or the South 40



Restaurant, Lounge & Casino

Just a short walk from the Holiday Inn Express!
207 2nd Ave. NW • Sidney, MT
(406) 433-4999 or 433-4338



The Perfect Combo for Mom!

A New Camera & a Sweet, New Tablet for Viewing All the Photos!

ELECTRICLAND

We have the largest selection of cameras & camcorders in the area!

Mon-Fri: 9am - 6pm • Sat: 9am - 5pm

101 South Merrill Avenue • Glendive, MT • 406-377-3645 | 410 N. Central, Shops at Fox Run • Sidney • 406-433-4370



COOKS ON MAIN
for the everyday chef

Great Mother's Day Items

3QT LE CREUSET BAKER W/LID: **\$59⁹⁹**
2PC LE CREUSET OVAL BAKERS: **\$59⁹⁹**
WÜSTHOF PARING KNIFE: **\$39⁹⁹**

Open Mon - Sat: 9am - 6pm
224 Main Street • Williston, ND
701-572-COOK (2665) • (F) 701-572-2666

1st Annual Richland Co. Youth Dodgeball Tourny Huge Success!

The 1st Annual Richland County Above the Influence Dodgeball Tournament was a huge success this past weekend with 17 youth and adult teams from Richland County participating in the event.

The event was organized by the youth involved in STAND throughout the County as well as the SHS Leo Club in order to provide healthy alternative activities for our areas youth and to engage our community in drug free events. In addition, more than 320 pounds of food were given as admission fees into the tournament to be donated to the Richland County Food bank.

STAND 4 YOUTH is involved with schools within Richland County helping to identify issues on bullying, underage drinking, drugs and tobacco and address those issues by promoting healthy positive lifestyles.

The Above the Influence Dodgeball tournament will be an annual event and if you would like to get involved in helping our youth please contact Melissa Dean @ 433-

4097 or visit us on Face Book at STAND4YOUTH.

A special thank you to all those who volunteered their time to help make this event possible and to Law Enforcement for having a "celebrity" team and to all the community members who attended and supported the event.



Richland County Deputy Gabe Zeiler, Richland County Deputy Josh Harris, Sidney Law Enforcement Officer Spencer Claridge participate in the tournament. (Photo by Kristi Kuylen)

National Nurses Week

Tuesday, May 6th - Monday, May 12th

The work of America's 2.9 million registered nurses to save lives and to maintain the health of millions of individuals is the focus of this year's National Nurses Week, celebrated annually May 6 – 12 throughout the United States. This year, the American Nurses Association has selected "Nurses Leading The Way..." as the theme for 2014. The ANA supports and encourages National Nurses Week recognition, programs through the state and district nurses associations, other specialty nursing educational facilities, and independent health care companies and institutions.

Annually, National Nurses Week begins on May 6, marked as RN Recognition Day, and ends on May 12, the birthday of Florence Nightingale, founder of nursing as a modern profession. In honor of National Nurses Week and RN Recognition Day, nurses around the country are encouraged to wear their school nursing pin, or any special nursing pin that day.

ANA, through its 54 constituent member associations, advances the nursing profession by fostering high standards of nursing practice, promoting economic and general welfare, promoting a positive and realistic view of nursing, and lobbying Congress and the regulatory agencies on health care issues affecting nurses and the public.

Traditionally, National Nurses Week is devoted to highlighting the diverse ways in which nurses, the largest health care profession, are working to improve health care. From bedside nursing in hospitals and long-term care facilities, to the halls of research institutions, state legislatures, and Congress, the depth and breadth of the nursing profession is meeting the expanding health care needs of American society.





of Williston
Your Locally
Owned & Operated
Soft Drink
Specialist
701-572-6746



Sidney Sugars
INSURANCE

Free Estimates &
Professional Installation



**611 South Cenral Ave
Sidney, MT • 482-5032**



FRONTIER
Heating • Refrigeration • Air Conditioning
**SIDNEY, MT
488-4657**
Sales • Service • Installation




**Northern
States Fishing
Tool Co., Inc.**

Service & Rental Tools
Box 346 • Watford City, ND
7 0 1 - 8 4 2 - 3 3 5 0



**Fulkerson
Funeral Home**

315 Second St. NW
Sidney, MT 59270
406-488-2805
email: ffh@fulkersons.com
www.fulkersons.com

REESE & RAY'S



203 2nd St. NW • Sidney
406-482-3737


- Landline
- Wireless
- Broadband
- Long Distance
- Nemont.TV
- Business Phone Systems



800.636.6680 www.nemont.net



**2429 W. Holly St.
406-488-4400**

**Western
Bank
of Wolf Point**
111 3rd Ave. S
Wolf Point
653-5500




**Mon-Fri: 8am - 5pm
Sat: 9am - 1pm**

215 East Main St • Sidney
1(800)482-1810 • 433-1810

**East-Mont
Enterprises Inc.**

**Candy • Paper Goods
Cleaning Supplies
& More!**

**608 E. Main • Sidney
Wholesale Distributors
406-433-2910**

**QUINNELL
ELECTRIC**

- Commercial
- Residential
- Remodels
- New Construction


**Chuck Quinnell
406-776-2331**



329 N. Main • Watford City
701-444-6484
Toll Free: 800-411-7590



**PO Box 375 • Sidney, MT
482-4027**



i'm lovin' it
**Sidney, MT
406-433-1983**

THE DEPOT
POKER **Casino** KENO
HAS PIZZAZZ

PIZZA & FINE FOODS
• WE DELIVER •
Hwy. 16 S, Sidney, MT • 406-433-4650



908 4th Ave. NE
Watford City, ND
701-444-9288

USDA Releases Final 2012 Ag Census Report - Two Montana Counties Make National List for Top Wheat and Beef Cow Production

Submitted by Jayson O'Neill

The U.S. Department of Agriculture National Agriculture Statistics Service (USDA NASS) released the final 2012 Ag Census Report today, including information on agriculture in Montana. The full report can be found at [agcensus.usda.gov/index](http://www.agcensus.usda.gov/index.php) <<http://www.agcensus.usda.gov/index.php>>. The USDA NASS takes a complete count of America's farms and ranches and the people who operate them every five years. The last survey was conducted in 2007. "Agriculture is a foundation of Montana's economy with over \$4.2 billion in agricultural products produced in 2012. This report allows us to examine the variety of crops grown and number of livestock in our state, and use that information to direct our programs and policies to meet producers' needs," said Director Ron de Yong, department of agriculture. Highlights of 2012 Census of Agriculture for Montana:

- Market Value of Agricultural Products: \$4.2 billion 51%
- Average Per Farm \$151,035 59%
- Direct Sales to Consumers \$9.4 million 49%
- Cropland Harvested 9.5 million acres 4%
- Farms with Internet access 20,884 farms 74.6%
- Total Production Expenses \$3.5 billion 47%

In addition to the highlights above, two Montana counties were ranked in the top five nationally for production of wheat and beef cows in 2012. Chouteau County ranked number three in total wheat production, with over 19.4 million bushels produced. Beaverhead County was Montana's top beef cow producing county, ranking fifth in the country with 77,087 beef cows. "The local food movement is becoming more of a force in Montana, providing local agricultural products to local consumers. Farmers sold over \$9.4 million in agricultural products directly to consumers in 2012. It is part of the reason we were recently ranked as one of the ten top states for local foods," explained de Yong. Montana was ranked by Strolling of the Heifers in their 2014 Locavore Index <<http://www.strollingoftheheifers.com/locavoreindex/>> as the ninth most committed state to local foods. The index measures on a per-capita basis the number of farmers markets, the number of consumer-supported agriculture operations (CSAs), and the number of food hubs, plus the percentage of each state's school districts with active Farm-to-School programs. "As we thought after the preliminary numbers were released earlier this year, agriculture has had a good run during the last five years. However, production expenses like fuel, feed, and fertilizer rose dramatically too, up an average of 47 percent. There aren't many industries that experience such an increase in the cost of doing business," said de Yong. Montana Department of Agriculture's mission is to protect producers and consumers, and to enhance and develop agriculture and allied industries. For more information on the Montana Department of Agriculture, visit [agr.mt.gov](http://www.agr.mt.gov) <<http://www.agr.mt.gov>>.

as the ninth most committed state to local foods. The index measures on a per-capita basis the number of farmers markets, the number of consumer-supported agriculture operations (CSAs), and the number of food hubs, plus the percentage of each state's school districts with active Farm-to-School programs. "As we thought after the preliminary numbers were released earlier this year, agriculture has had a good run during the last five years. However, production expenses like fuel, feed, and fertilizer rose dramatically too, up an average of 47 percent. There aren't many industries that experience such an increase in the cost of doing business," said de Yong. Montana Department of Agriculture's mission is to protect producers and consumers, and to enhance and develop agriculture and allied industries. For more information on the Montana Department of Agriculture, visit [agr.mt.gov](http://www.agr.mt.gov) <<http://www.agr.mt.gov>>.

Sidney Liquor Store is Proud to Announce the Transfer of Ownership to Bryon & Terra Stanford



Same Great Service! We Will Be Here For You!

SIDNEY
Liquor
STORE

Your only local retail liquor sales outlet
436 N. Central • Shops at Fox Run
406-433-2862 • M-F: 9-6 • Sat: 9-5

Roundup
WEB.COM
Everything
Roundup on
the web.

Super Saving Sale

Modulars starting at \$60 per sq. ft.



LOCK IN SALE PRICE, TAKE DELIVERY LATER!
• WOW!! Triplewide 2790 sq. ft. with all the bells & whistles.

SAVE
\$1000's

• 1600 sq. ft. modular, 3 bedroom, 2 bath, 6" walls, glamour bath, low-e windows, upgraded cabinets. **ONLY \$103,900**

NEW HOMES
of the **FUTURE**

406-248-1100
www.newhomesthefuture.com

7239 South Frontage Rd., Billings, Montana 59101



Once In A Lifetime Opportunity!

Richland County Centennial Items On Sale Now!

- Belt Buckles
- T-Shirts
- Jackets
- Mugs • Caps
- Umbrellas
- Can Koozies
- Tumblers
- Golf Balls
- Wine Glasses
- And More!



Available at the MonDak Heritage Center, The Lucky Buckle (406-433-5825) and the Sidney Chamber of Commerce and Agriculture (406-433-1916).

ONLY 11 CENTENNIAL RIFLES LEFT!

Contact the MonDak Heritage Center to purchase
406-433-3500

\$1,600 EACH

CUSTOM HOMES ON YOUR LAND

MODULAR HOMES FROM EXCAVATION TO COMPLETION

Licensed General Contractor Rus Inc. - We travel to ND, MT, SD, & WY



OPEN HOUSE
MAY 10 & 11



OPEN HOUSE
MAY 10 & 11

Add Garage
or Basement to
any Home

SPECIAL PRICE
\$173,900

1,508 Sq. Ft. - 3 Bedroom, 2 Bath

- ✓ Includes Unit
- ✓ Includes Full Concrete Basement
- ✓ Includes Excavation, Digout & Back Fill
- ✓ Includes Set & Finish
- ✓ Includes Delivery
- ✓ Includes Basement Stairs
- ✓ Includes All Appliances
- ✓ Includes Inside Plumbing

Excavation to Completion
Home Plans

• SAVE •

Let us do all the work from Excavation to Completion. We will bid your favorite plan with no cost to you!

MODEL HOME OPEN HOUSE
SAT, MAY 10TH & SUN MAY 11TH
12:00 PM - 4:00 PM

- Take Broadway E over river
- N. on 20th ave E
- Right on 11th St. E
- North On 134th Ave NW
- ★5231 134th Ave NW, Williston



SPECIAL PRICE
\$189,900

2,027 Sq. Ft. - 4 Bedroom, 2½ Bath

- ✓ Includes Unit
- ✓ Includes Full Concrete Basement
- ✓ Includes Excavation, Digout & Back Fill
- ✓ Includes Set & Finish
- ✓ Includes Delivery
- ✓ Includes Basement Stairs
- ✓ Includes Inside Electrical
- ✓ Includes Outside Electrical Disconnect

Excavation to Completion
Home Plans

907-398-9712 | LHEATH.AK@GMAIL.COM

GET GROWING!



Huge Selection of:

- Bedding Plants •
- Perennials •
- Shrubs •
- Trees •



Handy Andy's
Nursery

Mon-Sat: 9am - 6:30pm
Sun: Noon - 4pm
13824 West Front St
Williston, ND | 701-572-6083

Deer Season Set, Online Apps Available Now

North Dakota's 2014 deer season is set, with 48,000 licenses available to hunters this fall, 11,500 fewer than last year, and the lowest number since 1980.

Randy Kreil, wildlife chief for the State Game and Fish Department, said even after five years of reducing gun licenses, deer populations are still below management objectives in most units. Currently, only units 3F1, 3F2 and 4F meet or exceed management goals.

"Harvest and survey data indicate deer numbers are still declining, especially in the eastern part of the state," Kreil said.

The statewide hunter success rate in 2013 was 55 percent, which is lower than in 2012 (63 percent), and well below the department's goal of 70 percent.

Adequate snow cover needed for winter aerial surveys occurred only in the northeast. Results showed deer numbers were down 21 percent in unit 2C and 29 percent in unit 2D.

Statewide, Kreil said high quality deer habitat continues to be lost and will limit the potential for population recovery.

Out west, the number of antlered mule deer licenses in the badlands was increased modestly. However, as was the case the past two years, no antlerless mule deer licenses are available in units 3B1, 3B2, 4A, 4B, 4C, 4D, 4E and 4F. This restriction applies to regular gun, resident and nonresident any-deer bow, gratis and youth licenses.

Hunters are able to draw one license for the deer gun season and one for the muzzleloader season, and purchase an archery license. There is no concurrent season, and a hunter

cannot receive more than one license for the deer gun season.

The number of licenses available for 2014 includes 1,350 for antlered mule deer, an increase of 200 from last year; 932 for muzzleloader, down 270 from last year; and 134 restricted youth antlered mule deer, an increase of 19 from last year.

North Dakota's 2014 deer gun season opens Nov. 7 at noon and continues through Nov. 23. Online applications for the regular deer gun, youth, muzzleloader, and resident gratis and nonresident landowner seasons will be available May 5 through the Game and Fish Department's website at gf.nd.gov. Also, paper applications will be at vendors throughout the state by mid-May. The deadline for applying is June 4.

A new state law requires residents age 18 or older to prove residency on the application by submitting a valid North Dakota driver's license number or a North Dakota nondriver photo identification number. Applications will not be processed without this information.

Gratis applications received on or before the regular deer gun lottery application deadline (June 4) will be issued any-legal-deer license. As per state law, applications received after the deadline will be issued based on licenses remaining after the lottery – generally only antlerless licenses remain.

Total deer licenses are determined by harvest rates, aerial surveys, depredation reports, hunter observations, input at advisory board meetings, and comments from the public, landowners and department field staff.

District 2C Track & Field Meet

Wednesday, May 14th At The Sidney Track Field

Schedule of Events:

Track Events	
9:30am	100 Meter Hurdles..... Girls
	110 Meter Hurdles..... Boys
10:00am	100 Meter Dash Trials..... Girls
	100 Meter Dash Trials..... Boys
10:20am	400 Meter Run..... Girls
	400 Meter Run..... Boys
10:50am	1600 Meter Run..... Girls
	1600 Meter Run..... Boys
11:20am	200 Meter Dash Trials..... Girls
	200 Meter Dash Trials..... Boys
11:45am	400 Meter Relay..... Girls
	400 Meter Relay..... Boys
12:30pm	300 Meter Hurdles..... Girls
	300 Meter Hurdles..... Boys
1:00pm	100 Meter Dash Finals..... Girls
	100 Meter Dash Finals..... Boys
1:30pm	800 Meter Run..... Girls
	800 Meter Run..... Boys
1:55pm	200 Meter Dash Finals..... Girls
	200 Meter Dash Finals..... Boys

Field Events	
2:15pm	3200 Meter Run..... Girls
	3200 Meter Run..... Boys
2:45pm	1600 Meter Relay..... Girls
	1600 Meter Relay..... Boys

Field Events	
9:00am	Pole Vault..... Girls
	Pole Vault..... Boys
	Shot Put..... Girls
	Javelin..... Boys
	High Jump..... Boys
	Triple Jump..... Girls
10:30am	Discus..... Girls
	Long Jump..... Boys
12:00pm	Javelin..... Girls
	High Jump..... Girls
	Shot Put..... Boys
	Triple Jump..... Boys
1:30pm	Long Jump..... Girls
	Discus..... Boys

Participating Teams: Lambert, Grenora, Froid/Med. Lake, Brockton, Culbertson, Bainville, Fairview, Savage & Circle.

IIS SERVICES, INC.
Dan Cayko
(406)-480-5665
Marty Shaide
(406)-489-1441
(406)-742-3630 • Fairview, MT

REESE & RAY'S
IGA
203 2nd St. NW • Sidney
406-482-3737



POWDER KEG


Family Dining
Open 4:30 pm Tue-Fri
2 pm Sat & Sun
Fairview • 406-742-5180

We Support the Red Hawks!

Homestead Elevator

Homestead, Froid
406-963-2343

- Landline
- Wireless
- Broadband
- Long Distance
- Nemont.TV
- Business Phone Systems



800.636.6680 www.nemont.net

Good Luck!
From
THE SAVAGE MINE

PO Box 30 • Savage, MT
406-798-3651



406-742-5224

Fairview, Montana
416 S. Ellery

LAMBERT HISTORICAL SOCIETY & FOX LAKE SENIOR CITIZENS CENTER

Lambert, MT
406-774-3439



DOUBLE BARREL SALOON & CASINO

Open 10am - 2am Daily
401 Ellery Avenue
Fairview, MT
406-742-8110
Steakhouse Hours:
11am - 9pm, Sun - Thurs
11am - 10pm, Fri & Sat



Merchants Bank

Open 9am - 4pm
Monday - Friday
Box 465 • Fairview, MT
406-742-5203



TOWN & COUNTRY REPAIR

406-774-3475
Lambert, MT



Daniels-Sheridan Federal Credit Union

Your savings federally insured to \$250,000.
National Credit Union Adm., a U.S. Govt. Agency

Serving Daniels, Sheridan & North Valley Counties
Scobey, MT
P.O. Box 1160 • 487-5391
Medicine Lake, MT
PO Box 267 • 789-2209

Culbertson Pharmacy

Open Mon-Sat 9-5
115 Broadway
Culbertson, MT
406-787-5313
Keith Brisben
Pharmacist



Miller's Garbage Service

Savage, MT
406-776-2334

FINNICUM'S

Hardware • Furniture
Appliances • Giftware
Culbertson, MT • 406-787-5213

The Other Place


Family Clothing & Dry Goods
Culbertson, MT • 406-787-5211



INTERSTATE INDUSTRIAL
Steam Cleaning & Painting, Inc.

Marty Shaide
Fairview, MT
(701)-744-9051
(406)-489-1441

Western Bank of Wolf Point
111 3rd Ave. S
Wolf Point
653-5500





NEU CONSTRUCTION, INC.
Oil Field Roads & Locations
Residential Work • Street & Scoria Hauling

• Oil Field Roads & Locations
• Reclaim Work
• Gravel & Scoria Hauling

Fairview, MT
Fax: 406-742-5550
Office: 406-742-5549
neuconst@midrivers.com

Mon-Kota, Inc.
Fertilizer & Irrigation
Sales & Service

Fairview, MT
701-844-5300



Reinke
MORE RIGHT THAN RAIN

QUINNELL ELECTRIC

- Commercial
- Residential
- Remodels
- New Construction

Chuck Quinnell
406-776-2331



THE OASIS GREENHOUSE

3½ miles north of Fairview on Hwy 58
701-744-5752
oasis@midrivers.com

All You Need In One Quick Stop!

B&S QUICK STOP

Brockton, MT • 786-3229

HURLEY'S OILFIELD SERVICES

- Potable Water • Sewer System
- Loaders • Communications
- Backhoe • Trucking
- Skid Houses • Porta Potties

406-742-5312
Fairview, MT



Froid Grocery llc.
107 Main • Froid, MT
406-766-2413

MEDICINE LAKE AG SUPPLY MARATHON SEED CLEANING

Chris & Amy Ator
Owners



PO Box 245 • 220 Main Street
Medicine Lake, MT 59247
789-2524 • 789-2493
Toll Free 1-866-528-7733
Cell 765-7453
marathon@nemontel.net



Craty's MEAT PROCESSING 776-2447
Savage, Montana

- custom meat processing
- curing & smoking
- sausage & Jerky
- wild game

Slaughter at the plant or your farm!

Richland County is Accepting ECP Applications for Flood Damage

Emergency Conservation Program (ECP) Application Deadline is May 30, 2014

Submitted by Tammy Lake

Richland County has been approved to implement the Emergency Conservation Program (ECP) due to floods. Producers need to file an ECP application with the FSA before starting work on land damaged by flood water. Emergency Conservation Program is a cost share program which assists producers with damage caused by excessive rain and the floods that have occurred. Signup for the program begins on May 1, 2014 and ends May 30, 2014.

A producer qualifying for ECP assistance may receive cost-share levels not to ex-

ceed 75% of the eligible cost of restoration measures. The Richland County Committee has been approved for the following conservation practices to correct damage due to the flood:

EC1 - Removing Debris from Farmland: Practice is used for removing debris from farmland. A typical example of this is taking debris off crop-land and fences.

EC2- Grading, Shaping, Releveling, or Similar Measures: Practice is used for grading, shaping and leveling land that has been damaged by the flood and is returned to agricultural use. Example

- Land has erosion caused by flood and leveling of the land is needed to restore it.

EC3- Restoring Permanent Fences: Practice corrects damage to fences caused by the flood. Example - Fences in water gaps which have been washed out due to the high water.

Cost-share is calculated up to 75% of the actual costs, after they are adjusted based on the age of the fence.

Age of fence: Allowable actual cost factor

0-5 years old 100% of computed cost-share

6-10 years old 75% of computed cost-share

11-30 years old 60% of computed cost-share

Over 30 years old 0% of computed cost-share

EC4 - Restoring Conservation Structures and Other

Installations: Practice restores conservation structures and installations damaged by the flood. Example - Restoration of ditches and other permanently installed systems destroyed by the flood.

Eligibility for cost share assistance is based on a minimum of \$1,000 of eligible damage. All requests for cost share are subject to the availability of funds. Producers are encouraged to provide the FSA office with the following data at the time of application: Location of the damage and extent of the damage, such as length of fence, time needed to remove debris, damage to land or conservation structures with estimates of costs to repair. Please call the office at (406) 433-2103 to schedule an appointment.

Montana FWP Joins North Dakota in Mule Deer Study

Forty mule deer in Regions 6 and 7 were recently captured and fitted with GPS (global positioning system) collars as part of a larger study looking at the effects of energy development on mule deer.

Last year, in light of the increasing energy development overlapping with primary mule deer range in North Dakota, the North Dakota Game and Fish initiated a 5-year research project (3-year field season) to investigate the effects of energy development on mule deer space use, survival and demographics. The addition of collared mule deer in Montana to the concurrently running mule deer study in North Dakota could serve as an excellent opportunity to establish pre-energy development data on mule deer resource selection, survival, abundance and demographics and also serve as a control for the North Dakota study where energy development is already underway.

"Our collars were put in areas that have not been developed yet to serve as a control area for the study. It's a great opportunity to team up with our colleagues in North Dakota and to learn more about what local deer are doing, where they're going, how healthy the population is and causes of mortality. You always learn things you didn't even know you were looking for when you put out radio or GPS collars," said Melissa Foster, Glendive area Wildlife Biologist.

The study is expected to provide valuable pre-development demographic data (reproduction, survival, abundance, and distribution), resource selection data, and any avoidance information they detect from collared deer. This information, together with the results of the larger study, will provide region-specific data to better manage mule deer through landscape changes associated with energy and natural resource development.



Nurses Leading the Way

Sidney Health Center salutes its nursing staff during National Nurses Week. They make a difference each day caring for the members of our community.



216 14th Ave SW • Sidney, Montana • Phone: 406-488-2100 • Visit us online at www.sidneyhealth.org

New Summer Hours!

Mon-Fri: 8am - 4pm

TIFFANY STEFFAN

323 E Main Street,
SIDNEY, MT 59270
TSTEFFAN@FARMERSAGENT.COM
LICENSED IN MT & ND



Call 406-433-1377 today for Auto, Home, Life and Business.

BRING IN A TRADE - GET AN EXTRA \$500*

ONLY 4 LEFT! | BELOW FACTORY INVOICE | ALL REBATES STILL APPLY



#2925

2013 Edge Limited AWD, White

Invoice \$37,153

0%/72mo + \$1000 FMC -\$1,000

Eagle Country Ford Disc -\$1,500

You Pay \$34,653



#3095

2013 Edge SEL AWD, Silver

Invoice \$35,864

0%/72mo + \$1000 FMC -\$1,000

Eagle Country Ford Disc -\$1,500

You Pay \$33,364

#3166...2013 Flex Limited Ruby Red.....Retail: \$47,460...Invoice....\$44,756
Ford Final Pay -\$5,500
Eagle Country Ford Discount -\$1,500
You Pay ... \$37,756

#3041... 2013 F150 CC Tuscany Black Ops.....Retail: \$70,487...Invoice....\$61,664
Max Ford Rebates -\$4,500
Eagle Country Ford Discount -\$1,500
You Pay ... \$55,664



"Experience the Eagle Country Difference!"

215 East Main • Sidney, MT | 433-1810 or 1-800-482-1810 • eaglecountryfordsales.com

*In Eagle Country Ford Discounts. Rebates based on 59270 zip code. Not all customers will qualify for all rebates. Rebates may include financing with Ford Motor Credit and or trade assistance from Ford. 0% financing may be available in lieu of cash rebate. Check with sales staff for individual rebates.

WIC Celebrates 40th Anniversary

Food package changes to increase fruit and vegetable benefit for children

Submitted by Jon Ebelt

In May, the Special Supplemental Nutrition Program for Women, Infants and Children (WIC) will celebrate its 40th anniversary in Montana and nationwide.

According to state public health officials, WIC was launched 40 years ago in Montana as a pilot program on the Northern Cheyenne and Fort Peck Indian Reservations.

Currently, the federally-funded program has grown to 90 clinics located in various Montana communities and all seven Indian Reservations.

"It's well documented that WIC plays a vital role in the health of Montana's at-risk women, infants and children," said DPHHS Director Richard Oppen. "This is a program that has been around for four decades, and will no doubt keep providing quality services that help improve birth outcomes and save health care costs for many more years to come."

Studies have shown that WIC helps reduce the likelihood of adverse birth outcomes such as very low birth weight. The program also is also a strong proponent of breastfeeding, which has shown to be healthier for infants since they receive antibodies from breast milk that protects them against infection.

Coinciding with the 40th anniversary, Montana WIC is announcing several changes to the food package offered to clients as a result of recently adopted federal requirements. Some of changes go into effect beginning May 1, 2014, and the rest in the coming months.

"These changes are designed to help make for an even healthier, more appealing food package to the thousands of people we serve," Oppen said. "The goal is to sustain and increase participation in the program. We think these changes will help us achieve that goal."

The most healthy and exciting change that goes into effect on May 1 is the fruit and vegetable benefit for children will increase from \$6/month to \$8/month. "This change will provide a nice boost to fruit and vegetable consumption for young children," said DPHHS WIC Director Joan Bowsher. "Introducing children to more fruits and vegetables at an early age really points Montana kids in the right direction toward making healthy food choices."

Another popular change is that participants will also be able to pay the difference if their fruit and vegetable purchase goes over the dollar amount value of their benefit. "This change will

make it much more convenient for our clients to use the benefit," Bowsher said. "It's sometimes difficult to have their fruit and vegetable purchases add up to the exact benefit amount. Now, clients will be able to cover the extra cost during the same transaction if they want to."

WIC provides nutrition education, breastfeeding support, healthcare referrals and healthy foods to pregnant, postpartum and breastfeeding women, infants and children up to age five. On average, the program serves about 20,000 individuals each year in Montana.

To qualify for WIC, there are certain income guidelines and one must be a Montana resident.

For more information about the program, call 1-800-433-0239 or visit <http://www.dphhs.mt.gov/wic/>

RoundupWEB.COM

Everything Roundup on the web.



West Dakota Water – Saving North Dakota Roads

By Tie Shank

Williston: West Dakota Water (WDW) is saving the state, counties and townships millions of dollars in road maintenance and construction costs through private investment in water pipeline infrastructure.

WDW Principal Engineer Drew Poeckes states, "The most economical way to transport water is through a pipeline. We currently pipe water upwards of 30 miles to well sites by utilizing permanent underground infrastructure to transport the water. West Dakota Water takes away much truck traffic to and from well sites thus saving the state, counties and townships money on the maintenance of their road systems. We are a private company putting in infrastructure (pipelines) that takes the burden off of the public infrastructure (roads)."

WDW is a subsidiary company to JMAC Resources, Inc., and has worked closely with their engineering and technical partner Bartlett & West, to plan, design, construct and provide operational services for fresh water delivery.

WDW was granted an industrial permit by the ND

State Water Commission in 2012 to withdraw 10,000 ac-ft. annually from the Missouri River. In addition to this permit, WDW was also permitted to construct permanent submerged intakes into the Missouri River for withdrawing this water. The installed intakes allow for year round access to the water even in the harshest weather conditions.

Poeckes states, "Not only does WDW take much needed strain off of public roads, but also helps to ensure the aquifers of North Dakota are preserved for use by future generations." Poeckes adds, "West Dakota Water recognizes the desire by the State of North Dakota to put waters of the Missouri River to beneficial use that further expand the economy of North Dakota. If the state fails to put its share of the Missouri River to beneficial use it risks the potential of losing that water to downstream states. We knew the state's desire was to develop the Missouri River water for industrial uses such as hydraulic fracturing and to get away from using our North Dakota aquifer water as the aquifer water takes years to replenish. We are utilizing the

Missouri River water for the betterment of our state. The aquifer water is considered sacred and the state would rather it be saved for agricultural and municipal uses."

In addition to saving the North Dakota Public infrastructure and North Dakota's aquifer water, pipelining water from the Missouri River to oil and energy sites has multiple other benefits including:

- 1) Safety – less truck traffic
- 2) Environmental – less dust
- 3) Diesel – less trucks on the road equals less diesel fuel being burned.
- 4) Efficiency - huge cost savings for oil & energy companies

In February of 2014, the ND State Water Commission published, Facts About North Dakota Fracking & Water Use, and in this publication they state, "Surface water is the preferred source, because the region where the oil extraction is occurring contains the Missouri River, through which approximately 96 percent of the water in North Dakota's rivers and streams flows annually. The



Booster pump setup for an above ground temporary water line for Emerald oil. This pump has been running 24 hours/day since February & has pumped over 2,000,000 barrels of water (equivalent to over 16,000 truck loads).

Missouri River system is an extremely valuable source of water, both in terms of quality and quantity." Additionally the publication states some interesting facts:

The average fracking process in North Dakota requires about seven acre-feet of water.

One day of the average daily flow of the Missouri River at Bismarck (45,480 acre-feet) is enough water to frac 6,497 wells, or 87% of all the wells that have been fracked in North Dakota.

The Missouri River system is located in the heart of the oil production efforts with

massive amounts of water that are readily available. WDW has the permits, the tools, and the ability to efficiently and quickly meet the water needs of the oil and energy industry in the McKenzie County area of western North Dakota.

If you'd like more information on West Dakota Water, contact Drew Poeckes at 701-580-5968.

Left: West Dakota water crew members roll out 8" layflat hose for delivering water to an XTO frac.



Count on **Tractor & Equipment Co. and T&E The Cat Rental Store**, for all your equipment buying and rental needs. From concrete saws to heavy construction equipment, we offer products from Cat® and other leading brands to meet most jobsite needs.

Lindsay Smith
406-696-0714

T & E

CAT Rental

**SONDA'S solutions**

Specializing in FR Clothing

OFFICE: 406-433-6757 • CELL: 406-697-7153
2221 S. CENTRAL AVENUE • SIDNEY, MT 59270
FAX: 406-433-6755 • WEBSITE: WWW.SONDASOLUTIONS.COM

SLS SERVICES, INC.
Oil Field & Industrial Construction



Phone: 406-433-6754
Fax: 406-433-6755
www.slserviceinc.com

2265 S. Central Ave. Sidney, MT 59270
Email: les@slservices.net

Steel & More for the Oil Field

• Process Steel • Plate • Hot Roll Sheet
• Rebar • Pipe

**PACIFIC**
STEEL & RECYCLING™

Williston and Area:
• 13904 W. Front St., Williston, ND
• 701-572-1095

Sidney and Area:
• 35023 County Road 123, Sidney, MT
• (800) 548-6364
• (406) 433-1301

We Buy Scrap!

www.pacific-steel.com

**CHAZNLINE CONSTRUCTION**
406-433-2429 • SIDNEY, MT

Oilfield & Pipeline Construction

Phone: (406) 433-CHAZ (2429)
Fax: (406) 433-2439
1405 4th St. SW Sidney, MT • Ste. #7

MBI Energy Services

Currently seeking Class A CDL Drivers in our ND locations

Become a part of MBI's team today!

701.575.8242
Apply online www.mbienergyservices.com

Customer Service is Our #1 Priority

**BORDER**
STEEL AND RECYCLING, INC.

Construction Materials • New Steel • Aluminum & Stainless
Brady Smelser • Tim Mulholland • Kelly Moody • Bret Smelser • Ernie Gawryluk • Ken Syme

Sidney 35002 CR 123 406-433-7737 1-855-810-2995	Glendive 2703 W. Towne St. 1-800-423-5219	Williston 13896 W. Front St. 1-800-820-5493	Plentywood Hwy 16 East 406-765-2624
---	--	--	--

We Are Your Oilfield Supply Headquarters!

**Richland Pump & Supply**

Down Hole Sucker Rod Pumps
Tubing Anchors • Gates
Hydraulic Hoses & Belts
Balon Ball Valves • Line Pipe • Tubing
Fittings • Norris Sucker Rods

Stanley, ND
701-628-8706
Sidney, MT
406-488-8706 • rpands@midrivers.com

Reach Over 21,000 Readers Each Week In Eastern Montana & Western North Dakota And Always On The Internet at roundupweb.com
(Paypal required for online purchases)

Add a photo to your classy online! (additional charge)

Now Taking Credit Cards! (5% charge added to all transactions)

Get Up To 30 Words For Just \$9 • Deadline: Monday

HELP WANTED
HELP WANTED
Found It Now is now accepting applications for our all positions for our Watford City location. Experience preferred but willing to train. We are looking for self-starters, dependable, have a current driver's license, and be able to work well with co-workers. Salary depending on experience, benefits available. To Apply: Please drop of resume at 4327 4th Ave West, Williston, ND or email resume to founditnow1@yahoo.com.

HELP WANTED
Mid-Level Manager
An aggressive Oilfield Services Company is seeking a mid/upper-level supervisor(s) for the Eastern Montana and Western North Dakota region. The ideal candidate(s) need to have established relations with oilfield companies and experience in directing field personnel in the maintenance and construction of oil and gas facilities (treater shacks, pumping units, pressure vessels, valves, tank batteries, flow lines, and other services). Typical responsibilities will include, handling day to day maintenance requests, tracking work tickets and expenses, coordinating labor and materials, working with clients to reduce cost, and optimizing

our operations. A key role will be to ensure safe operations of employees through job safety analysis, stop work authority, personnel coaching, and following proper work procedures. Contact Mr. White @ 254-394-2471.

HELP WANTED
Found It Now is now accepting applications for our all positions for our Watford City location. Experience preferred but willing to train. We are looking for self-starters, dependable, have a current driver's liscense, and be able to work well with co-workers. Salary depending on experience, benefits available. To Apply: Please drop of resume at 4327 4th Ave West, Williston, ND or email resume to founditnow1@yahoo.com.

CITY OF SIDNEY
Is accepting applications for water plant operator. Part time summer park and street maintenance, must be 16 or older. If interested, please fill out application at City Hall, 115 2nd St. SE, Sidney.

HELP WANTED
Part time bartender. Apply with Randy at Sidney Elks Club between 1 - 4 pm, 123 3rd St. SW, Sidney. 406-433-2406.

CARRIERS WANTED
Need extra cash or want to get some exercise? We have carrier routes available in most parts of Sidney. Call 406-433-3306, or fill out application at The Roundup, 111 W. Main, Sidney.

HELP WANTED
The Roundup Newspaper is looking for a freelance writer to cover the Sidney, Watford City & Williston areas. Apply at Sidney Job Service

COOKS & SERVERS
Wage DOE. Apply in person at Cattle-Ac, 119 N. Central Ave., Sidney, MT.

REAL ESTATE FOR SALE
28x56 modular home, 2012 model, 4 bedroom, 2 full bathrooms, set up on 1 acre lot and ready to move into, located along blacktop road, Route 30. Priced to sell quick. Call Jim Pojorlie, West Plains Realty, 701-260-0141.

Kilen Backhoe Service

- Sewers • Basements
- Water Pipelines

Marvin: 406-798-3601

Marlon: 406-489-1243

Kenny: 406-489-1426

BEAUTIFUL LOG HOME FOR SALE
5 Miles SW Of Sidney, MT 4 bedroom, 2 baths, attached double garage. Partially finished basement, updated kitchen and bath, outbuildings. Priced below appraisal value at \$439,000. Call 406-798-3540 or email for more info and viewing at jfsmacdonald@yahoo.com.

REAL ESTATE FOR LEASE

FOR LEASE
For cash lease. Two quarters of grazing land, for five years. Red Water River flows through land, plus a well. Land is located Northwest of Richey Montana. Former Ruth Cooper property. Legal- SCT: 02 TWN: 22 N RNG: 50 E S02, T22 N, R50 E, SW4 cont 160 AC, SCT: 02 TWN: 22N RNG: 50E S02, T22 N, R50 E, LOTS 3, 4,

Bakken Mobile Veterinary Service

Dr. Vince Stenson
Complete small animal care
8 am - 4 pm

Sidney:
Thurs, May 22
Tractor Supply Co.

Culbertson:
Wed, May 7, 14, 21, 28
County Ext. Bldg on Main Street

Bainville:
Wed, May 28
The Welcome Stop

Fairview:
Wed, May 14
The Powder Keg

Call for Appointment
(701) - 609 - 3705

Reynolds MARKET
Part of the community for 89 years

We are accepting applications for:

Full/Part-Time Cashiers, Produce & Bakery Clerk

Must be willing to work flexible hours, evenings & weekends. Willing to train, wages DOE & benefits available.

Full/Part-Time Cake Decorator

Hours will vary. Experience preferred. Benefits available.

Full-Time Bakery Manager

Management experience preferred, ability to motivate staff, oversee inventory, merchandising, scheduling & dept. sales. Wages DOE & full benefits offered.

Pick up an application at the Guest Service Center or bring a resumé to Reynolds Market or apply online at:
www.reynoldsmarket.com
406-433-2305 | Shops at Fox Run • 404 N. Central, Sidney

AUCTION

Saturday, May 17, 2014, 11 AM
At the E.P.E.C., 313 S. Merrill Ave., Glendive, MT

Dr. Ken Zuroff has retired from his optometric practice. He will sell the furniture from his office. This merchandise is in very good condition. This is a great opportunity for someone setting up a new office, or for someone needing to add to, or change your office furniture. Doug Hendrickson has recently retired from his long-time job as a UPS mechanic. He will be selling lots of good tools. We've added some very nice pieces of antique furniture & collectibles.
Open House: Friday, May 16, 1 PM to 7 PM

Office Furniture:
Desk, 7' x 30" w/ 2 File Drawers on One End
Could be used as Credenzas:
Storage Cabinet, 10' x 24" w/ 6 Sliding Doors
2 Storage Cabinets, 8' x 16" w/ 4 Sliding Doors
L-Shaped Corner Table, 7' x 5' x 24" Wide
11' x 24" Table w/Formica Top
2 - 6' x 18" Tables w/ Formica Tops
Conference Table, 8' x 3', 10 Black Chairs
2 Tall Display Shelves, Sm Wooden Display Box
Square Coffee Table, 2 Matching End Tables
2 Table Lamps, Another End Table
12 Wooden Arm Chairs w/ Padded Seats & Backs
More Asstd Arm Chairs w/ Padded Seats
Several Asstd Sizes Office Chairs on Rollers
Low Stools on Rollers, Taller Metal Stool
Adjustable (Up & Down) Swivel Chair
Several Adjustable (Up & Down) Tables on Rollers
Small Desk, Child's Wooden Chair
2 - 4 Drawer Metal File Cabinets, Small Table
Assorted Storage Cabinets:
Some w/ 1 Drawer, 1 Door; Some w/ 2 Doors
Some w/ 2 Drawers, 2 Doors
Bookcase w/ 1 Sliding Door, Lots of Mirrors
Set - 2 Small Corner Tables w/Crayon Décor
Lots of Ducks Unlimited Pictures, Other Pictures
Asstd Decorative Bird Cages, Silk Tree Plant
"Doctor" Figurines, Live Philodendron Vines
Small TV & VCR, Kenmore Microwave
Printers, Old Monitors, Other Computer Access

Antiques & Collectibles:
3-Pc. Bedroom Set, Dbl Bed Frame, Dresser, & Vanity w/Mirror, Oak Library Table
Oak Free-Standing Full-Length Cheval Mirror
1930's Art Deco "Waterfall" Vanity w/ Round Mirror, White Wicker Loveseat & Table
Blond Drop-leaf Dining Table w/ 2 Leaves & 4 Matching Chairs, Writing Desk
Maple Oval Table w/ Pedestal Legs & 2 Leaves that Pop-Up, Old Platform Scale w/ Weights
Old chest of Drawers, Needs Refinishing
"Magic Mill" Flour Grinder, Pot Belly Stove
Triton 3-Wheeled Cruiser, Adjustable
Fisher Dual Cassette Player & Recorder
Fisher DVD Player, Sansui Reverb Amplifier
Fisher Component Amplifier
Adjustable Table w/Leather Inset
Old Wooden Table, to Refinish

Boat: 2-Person Jon Boat, Minn Kota Trolling Motor

Tools:
Mac Top-Box Tool Cabinet
Snap-On Bottom Box Tool Cabinet
1/2" Drive Air Impact Wrench
3/8" Drive Air Butterfly Impact Wrench
1/2" & 3/4" Drive Impact Sockets
3/8" Drive Air Drill, Several 1/2" Drive Sockets
Mac, Snap-On, & Wright Tools & Combination Wrenches & More, Makita Angle Grinder
Rockwell Blade Runner (Saw), Table-Top Model

Sale by GRANMOE AUCTIONS
Glendive, MT
RON: (406) 365-4482; RAY: (406) 377-3539

TERMS: CASH OR GOOD CHECK

DERs, Supervisors & Owner Operators Hands-On Workshop

WORK HARD...WORK SAFE...THE BAKKEN WAY!

Everything you need to know about the Drug & Alcohol Process & DoT Audits!

May 6th at the Richland County Fairgrounds Event Center in Sidney, MT
May 7th at the Veterans Memorial Building in Watford City, ND
Time: 8:00am - 5:00pm

SCHEDULE OF ACTIVITIES

- **Cami Gilberton & Kelly Krapu: Compliance & Safety Services, Inc.**
Transportation & Safety Consultants speaking on Driver Qualification Folders, Drug & Alcohol Program, Hours of Service Records, Entry-level Training Requirements, Vehicle Maintenance Records & Accident Files. Participants will walk away with a better understanding of FMCSA regulations & will be prepared in the event of a FMCSA Compliance Review or Safety Audit.
- **Dr. David Kuntz: Clinical Reference Laboratories**
Toxicologist with Clinical REference Laboratories speaking on Compliance Issues, Quick Tests as well as the kind of drugs that are our there now, particularly the new designer drugs such as Bath Salts & K2 Spice.
- **Mercer County Deputy Ray Becker & his K-9 dog will be doing demonstrations**
- **Lunch Break 1 Hour** (Pulled Pork, Coleslaw, Chips & Beverages)
- **Panel Experts for open question forum are to include:**
Brad Harrington: DER Power Fuels
Chris Treager: DER Tervita
Angela Christianson: DER Sidney Sugars
Tim Anderson: SAP District II Alcohol & Drug Program
Vickie Schmidt: TPA/MRO Schmidt & Associates
- **Becky Sturdevant: Montana Common Sense Coalition & M.A.D.D.**
Designated Employer Representative Tips
Marijuana & Workplace Safety
Non-DOT Drug Testing Program
Impairing Medical & Mental Health Conditions (FMCSA Exams)

Registration Fee: \$50 per individual • \$45 per individual for reserving in advance • \$45 per individual for groups of 5 or more (All Options Include Lunch). **For reservation, sponsorship, or questions, please contact Wendy Haugen or Diane Edinger at 406-433-2650**

Special Thanks To Our Sponsors:

STORAGE UNITS AVAILABLE

20X20 • 10X20
10X16 • 8X9

Sidney, MT
482-3799 or 482-2666

FRANZ CONSTRUCTION INC.

Is Looking For:

- Truck drivers with current CDL
- Equipment operators
- Mechanics
- Welders
- An office assistant

*Benefits Available
Wages DOE*

Apply in person or Employment Office

1700 S. Central • Sidney, MT

Exceptional Care for Life

EMPLOYMENT OPPORTUNITIES

Sidney Health Center's most valuable resource is the people who serve our patients, residents and guests. Join our team!

- **Certified Nurses Assistants**
*Emergency Room
Extended Care
Surgical Services Aide*
- **Environmental Services**
- **Lodge Resident Assistant**
- **Medical Assistant, RN or LPN**
- **Registered Nurses**
*Charge
Med/Surg
OB
Surgery*

We promote a Work-Life Balance

TOP 100 9 Out of 10 Employees Agree:
"I don't have to choose between my job and family!"

For additional information or to apply online, please visit our website or contact: Marilyn Olson • Phone: (406) 488-2571
mjolson@sidneyhealth.org • 216 14th Ave SW • Sidney, MT

Visit Our Website at: www.sidneyhealth.org

COMMERCIAL SPACE FOR RENT

Less than \$1/sq. ft. per month. 1 retail & 1office space. Located in downtown Sidney. Waterfall, carpeted throughout, security cameras, cell phone booster, wireless internet, in-house restaurant. Call Linda @ 406-489-1945.

SERVICES

PAINTING

Will paint houses, barns, quonsets, silos, grain bins, etc. References available. R&L Painting, 406-488-8244.

MONUMENTS

Azure & Son Monuments: Grave covers, markers, all colors & sizes, custom designs,

scenes, final dates, pictures. We sell monuments, no extra charge for lettering. Box 2, Froid, MT 59226, 406-766-2326 or 406-839-0910.

WELDING

Welding & repair work. No job is too small. Portable welder, reasonable rates. 701-444-2936.

COMPLETE SERVICE CENTER

The Roundup provides free Fax service at Meuchel Computer Services, Watford City, ND, for all news, photos & advertising copy. You may drop your Roundup payments at Meuchels.

WINDSHIELD REPLACEMENTS

Lowest price around. Quick service. Over 300 windshields in stock for cars, pickups & semis, reflect windshields are now \$120. Magrum Motors, 1820 2nd St. W., Williston. 701-572-0114.

FARM & RANCH

FOR SALE

J.D. 158 loader & 148 loader w/grapple. Farmhand F 11 loader parts, 8' snow buckets, one with grapple, plus cylinders. 406-963-2228.

WANTED

About 20 cow/calf pairs. Williston 701-875-4278.

MINERALS & SUPPLEMENTS

Complete line of minerals & supplements, Crystalx prottein & mineral tubs for cattle, horses & sheep. All types of liquid feed for livestock. Calving supplies. R&J Ag Supply 406-488-1953, 406-480-2006, 1-800-233-2499, Sidney, MT.

VERMEER HAYING EQUIPMENT

See us today for all your haying & feeding equipment, sweeps & farm oil. Anderson Vermeer Sales & Service. Open Mon.-Fri., 8 a.m.-5:30 p.m. 701-828-3358 or 701-828-3482 (after hrs.). Alexander, ND.

FOR SALE

2006 Ford Van, 3/4 ton, 1,000 lb. lift, full set of new tires, another full set of studded snow tires. Call 406-433-3306.

FOR SALE

'08 Ford 550, 15' flatbed, 6 speed, 4WD, 145,000 miles, new tires, Make an offer. '78 Kenworth 13 sp. Detroit, new tires, runs great, \$6,500 OBO. 701-565-2344.

MISCELLANEOUS

AIRCRAFT

Buying or selling. Call Barry at Sidney Air Service Inc. 406-480-2024.

RV FOR SALE

1999 HITCHHIKER PREMIER 5th Wheel 35.5 ft, 3 slides, new fridge, water heater, tires, batteries. Comes with 5 cu. ft freezer and more. In excellent condition. Owned by 1 person, non smoker. Call 406-250-5204.

HURLEY'S OILFIELD SERVICES

- Potable Water • Sewer System
 - Loaders • Communications
 - Backhoe • Trucking
 - Skid Houses • Porta Potties
- 406-742-5312
Fairview, MT

NEU CONSTRUCTION, INC.

- Oil Field Roads & Locations
 - Reclaim Work
 - Gravel & Scoria Hauling
- Fairview, MT
406-742-5549

LONG X BOTTLE SHOP

Drive Thru Mon-Sat: 10am-8pm Sun: 1-4:30pm
Walk In Mon-Sat: 8am-9pm Sun: 1-5pm
Hwy. 85 Watford City 701-444-3335
(Located in the Long X Visitor Center)

Sports Booster WEEKLY SCHEDULE

Track

Thurs, May 8

Watford City JH at Bowman, 4 pm
Watford City Varsity at NWC in Velva, 12 pm

Sat, May 10

Sidney at Miles City, 10 am
Fairview HS, Savage, Froid/Lake HS, Culbertson HS, Brockton HS, Bainville HS, R&L HS at Wolf Point Invite
Fairview JH, Froid/Lake Elem/JH, Culbertson Elem/JH, Brockton JH, Bainville 5-8, R&L 5-8 at Fairview Districts
Watford City Varsity at Dickinson Trinity, 10:30 am
Brockton JH at Glendive

Mon, May 12

Watford City Varsity at Velva, 3:30 pm

Tues, May 13

Watford City Varsity at Hazen, 3:30 pm
Watford City Varsity at Dickinson

Wed, May 14

Fairview HS, Savage, Froid/Lake HS, Culbertson HS, Bainville HS, R&L HS at Sidney District 2C

Golf

Wed, May 7

Bainville, Froid/Lake, R&L, Fairview at Scobey Invite

Fri, May 9

Bainville, Froid/Lake, R&L, Fairview at Plentywood

Kickball

Thurs, May 8

Watford City Kickball Grades 2-5, 3:45 pm

Tues, May 13

Watford City Kickball Grades 2-5, 3:45 pm

Baseball

Thurs, May 8

Williston at Watford City (Makeup)

Fri, May 9

Watford City at Watford City (Makeup)

Sat, May 10

Watford City at Dickinson, 1 pm

Tues, May 13

Watford City at Region Play-in

Softball

Thurs, May 8

Sidney at Glasgow, 3/5 pm

Sat, May 10

Blgs Central/Laurel at Sidney, 11 am

Tues, May 13

Sidney at Miles City, 3/5 pm

Support Your Favorite Team!

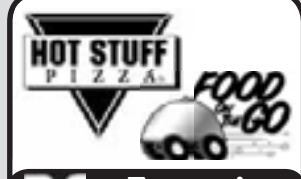
Be Sure To Thank The Sports Booster Schedule Sponsors On This Page



Family Dining!

Fairview
406-742-5180

Open at 4:30pm Turs-Fri
2pm Sat & Sun



Farmer's Union Oil Co.

501 6th Ave SE • Watford City
701-444-3639



Smarter. Better. Faster.

www.RTC.coop

Phone • Internet • TV

Kids, Earn \$\$\$ Join The Roundup Carrier Team!



\$100
*SIGNING BONUS!**

Plus Cold Weather Bonus During the Winter Months & Periodic Raises!

Routes Available In Many Sidney Neighborhoods! Call Erin at (406)433-3306 for details.

The Roundup

*Distributed over a 5 month period.

THE BUSINESS ROUNDUP

REACH 26,500 READERS IN THE ENTIRE MONDAK REGION

406-433-3306 OR 800-749-3306 ~ INFO@ROUNDUPWEB.COM

GO TO WWW.ROUNDUPWEB/DIRECTORY FOR DIRECT LINKS TO COMPANY WEBSITES & LOCATIONS

\$25⁰⁰/WK

NICK JONES REAL ESTATE



TRUCK ROUTE SOUTH, SIDNEY
OR CONTACT ONE OF OUR AGENTS:

JUSTIN JONES 406-480-9525 DENNIS WICK 406-480-1550 JERRIAN FRANZEN 406-478-3773 KRISTIN LARSON 406-480-5139 HOME: 798-3115

www.NICKJONESRE.COM

SLS, INC.
Oil Field & Industrial Construction

2265 S. Central Ave.
Sidney, MT 59270
Email: les@slservice.net
Phone: 406.433.6754
Fax: 406.433.6755

www.slserviceinc.com

Beagle

PROPERTIES INC.

View all our listings at
www.beagleproperties.com

DOORBUSTN

Portables & Septic Service, LLC

Blaine Rogers, Owner

PO Box 1003
Sidney, MT 59270

Office: (406) 433-7586
Fax: (406) 433-7598
Service: (406) 489-8815

www.doorbustnportablessepticsservice.com

SIDNEY WOODWORKER & LUMBER

1450 5th St SW • Sidney, MT

406-433-7767 • Fax: 406-433-7768 | M-F: 8 - 5:30pm • Sat: 8 - 3pm

SONDA'S solutions

Specializing in FR Clothing

OFFICE: 406-433-6757 • CELL: 406-697-7153
2221 S. CENTRAL AVENUE • SIDNEY, MT 59270
FAX: 406-433-6755 • WEBSITE: WWW.SONDASOLUTIONS.COM

MFCP MOTION & FLOW

CONTROL PRODUCTS, INC.

Fluid Connectors - Industrial Hose - Seals
Hydraulics - Pneumatics - Automation
Filtration - Racor - Instrumentation

406.433.1590
After Hours 406.428.3115
Fax 406.433.1589

SIDNEY, MT
205 10th Avenue SE
WWW.MFCPINC.COM

Brandon Ensrud
Journeyman Electrical Supervisor
Cell: (406) 480-4061
brandon.agri@gmail.com

Sax Electric

ELECTRICAL CONTRACTOR & SUPPLIER
Licensed in Montana & North Dakota

Office: (406) 488-8066
Fax: (406) 488-8067

1775 S. Central Ave.
Sidney, MT 59270

CUSTOMER SERVICE IS OUR #1 PRIORITY

Farm & Ranch Products & Construction Materials. New Steel, Aluminum & Stainless.

BORDER STEEL AND RECYCLING, INC.

Brady Smelser • Tim Mulholland • Kelly Moody • Bret Smelser • Ernie Gawryluk

Sidney 35002 CR 123 5000 CR 123
406-433-7737 1-855-810-2995

Glendive 2703 W. Towne St.
1-800-423-5219

Williston 13896 W. Front St.
1-800-820-5493

Plentywood Hwy 16 East
406-765-2624

B&B SALES & SERVICE

SIDNEY, MT
TRAILERS

• CARGO • FLATBED
• UTILITY • PARTS
• REPAIRS

Mark Brodhead
Trailer Sales

Cell: 406-480-7332
Office: 406-433-1888

34940 Highway 23
Sidney, MT 59270

YOUR COMPANY HERE

Coverage for all the things you care for.

TIFFANY STEFFAN
323 E Main Street,
SIDNEY, MT 59270
TSTEFFAN@FARMERSAGENT.COM

FARMERS INSURANCE

Call 406-433-1377 today for Auto, Home, Life and Business.

Kauffman Foundation Names Montana Top State for Entrepreneurs

Submitted by Mike Wessler

Governor Steve Bullock today highlighted a report from the Kauffman Foundation that shows that Montana continues to have the highest ranking for entrepreneurial activity of all 50 states, with 610 entrepreneurs for every 100,000 adults. That number represents an increase from the previous year's number of 530 entrepreneurs for every 100,000 adults.

"The entrepreneurial spirit of Montanans has been an important part of our state's success throughout the years, but has been especially important through the recession and

Lower Yellowstone Fishing Access Sites Open

By MT FWP

All Fishing Access Sites on the lower Yellowstone River between Glendive and the North Dakota border are again open to the public. "Recreationists and anglers should remain aware that sites are open but visible damage from ice flows exists and repairs and reconstruction are expected to be completed sometime late summer," said Cordell Perkins, R7 Fishing Access Site Manager. Perkins also stated, "Black Bridge Fishing Access Site is open to foot traffic only. That site suffered some of the heaviest damage." For site specific information please go to www.fwp.mt.gov or call the regional office at 406-234-0900.

recovery," Bullock said. "These entrepreneurs have helped to strengthen our state's economy and provide consistent job and wage growth. I want to make sure Montana continues to support this type of innovation and entrepreneurship."

The annual ranking was published by the Kauffman Index of Entrepreneurial Activity, a leading indicator of new business creation in the United States.

In its report, the Kauffman Foundation found that in 2013, while the Montana rate of business start-up had increased, the national business start-up rate had declined slightly – from 0.30 percent of American adults per month starting businesses in 2012, to 0.28 percent in 2013. The report found that entrepreneurial activity is generally the highest in western and southern states. Alaska, South Dakota, California, and Colorado round out the top five states for entrepreneurs.

In the recently released Main Street Montana Project business plan for the state, Bullock highlighted the importance of continuing to nurture emerging industries and encouraging innovation as one of the pillars for economic growth in the state.

The Kauffman Foundation's report is available at: http://www.kauffman.org/~media/kauffman_org/research%20reports%20and%20covers/2014/04/kiea_2014_report.pdf

A Radio That Will Fit Whatever You Drive! Starting at \$359



Call Larry Today At...
ADVANCED COMMUNICATIONS
CONGRATULATIONS TO THE TOP TEN!
Just North of McDonald's • Sidney, MT
406-433-1659 • Toll Free: 1-866-433-1659

CB AUCTION'S

ANNUAL SPRING CONSIGNMENT AUCTION

Lunch served by Kruger's Kitchen

Saturday, May 17, 2014 at 11:00 a.m. (MDT) Sharp!

Bowman County Fairgrounds just south of Main Street, Bowman, ND

CONSIGNMENTS INCLUDE:

Bowman County

1997 Ford Louisville Truck - w/16" Diamond Steel box, tandem duabs, 8.3 L Cummings, auto trans., 121,612 miles, looks really good

Bridge Plank
26 assorted 20' to 28'
75 assorted 8' to 14'
60 - Posts 6"x8"x6'
70 - 16" Diameter Piling - assorted 8' to 10'

Bowman County Sheriff Department

2005 Ford Expedition - 5.4 3V Triton, 126,160 miles, good tires

Darwin Wilke

1973 GMC 2-1/2 Ton Truck
4&2 transmission, 16" box & hoist, 8.25 X 20 tires

7-1/2 X 8' Snowmobile Trailer
Metal Shelves
Some Misc. Items

Robin Braaten

20' Drag
300 Wooden Posts
RAC-PAC Automatic Headgate

B. Bowman

Dutchman Fifth Wheel Camper - 12' slide out, canopy, very clean, queen bed, 2 bunk beds, hideabed, hitch on back bumper, spare tire

Husqvarna Push Mower - self-propelled w/bagger, 3 years old

IH 560 Diesel Tractor - new short block, good tires, 2 pt. & 3 pt., 540 PTO, 1 set hyd., super nice, F-11 Loader - snow bucket, grapple fork w/manure bucket, you'll like the unit - loader & tractor sold separately

New Utility Trailer - 5x8 w/ramp

1981 Ford Clubwagon Van - looks good, rebuilt engine

Lane Dingfelder

Windbreak Tin - about 100 sheets
25 Rolls Good, Used Barbed Wire
100 Wood Fence Posts

Ron Bowman

Livestock Equipment - all in good shape - you won't want to miss these items!

8' Red Rocket Gate
12' Red Rocket Gate
16' Brown Gate
14' Powder River Gate
4' Koffler Head Gate - no frame
6' Flat Aluminum Gate
8' Brown Gate
2 - 10' Powder River Corral Panels
2 - 14' Powder River Corral Panels
18' Powder River Corral Panel
2 - 7' Blue Koffler Chute Gates
8' Blue Koffler Chute Gate
8' Blue Koffler Chute Panel
5 - 8' Small Tube Green Panels
2 - 16' Blue Koffler Calf Pass Panels
Trim Chute wheel gate
Head Gate
Heating Box - Sled - Crate Box - Hook
Various Gate Hinges & Pins
5 Bags Sawdust Chips
Some Small Items

Clay Marton

JD 7700 Diesel Combine - 220 straight header pickup header, always shedded - will be nice!

Ken Schmit

Contents of Five Storage Units

Wayne Hughes

Business Opportunity
Material & Equipment to Build Screens - residential & commercial, easy to learn how to make - all equipment - includes new saw, frames, screen material & much more

Net Responsible for Accidents

Terms: Cash

C-B AUCTION SERVICE

Anything stated at sale takes precedence over any printed matter

Sale Conducted and Clerked by C-B Auction Service
BILL BOWMAN, Auctioneer, Lic. #92 • KAREN BOWMAN, Clerk, Lic. #34
701-523-1188 • cell: 701-206-0510

EXCELLENT SELECTION - GOOD USED ITEMS

Lots of Good Items & I'm Sure More To Come!!

BAKKEN BORN. CONTINENTAL BRED.

Russ Atkins grew up on a farm in Montana and learned the meaning of a hard day's work gathering wheat in the rolling hills where Lewis and Clark once explored. He followed his own pioneering spirit when he joined the Continental Resources team as Production Engineer in 1997. Four promotions, 150 new hires and 900 wells later, Russ's nose-to-the-grindstone work ethic has helped to make the Bakken home for Continental Resources for a quarter century.

If you're ready to discover a future full of possibilities like Russ, consider Continental Resources for the career opportunity of a lifetime.

WE'RE HIRING.
CLR.COM/CAREERS

Continental
RESOURCES

We're Your Single Wide Home Headquarters!

18' wide

3 bed/2 bath, hickory cabinets, 9' ceilings

\$69,995*

16' wide, 3 bed/2 bath, front kitchen

\$49,995*

16' wide, 3 bed/2 bath

\$50,995*

***Home Only Prices. Includes delivery.**

Stop In & See Our Large Selection of Single Wide Homes!

All Feature Large Master Baths & Walk-In Closets!

Available for Immediate Delivery

Other Floor Plans To Choose From

Iseman Homes
YOU'RE HOME, NOW.

M-W-Th: 9am-7pm • T-F: 9am - 6pm • Sat: 9am - 4pm
2308 West Front St. Williston, ND | 701-572-2590

Lunch Menus

Sidney School
Thurs., May 8:Belgian waffles, sausage links, hash browns, applesauce.
Fri., May 9: Chili, cinnamon roll, pears.
Mon., May 12: BBQ chicken sandwich,peach cups, peas.
Tues., May 13: PB & J sandwich, chicken noodle soup, carrot sticks, fruit.
Weds., May 14: Spaghetti, tossed salad, garlic toast, pears.

Fairview School
Thurs., May 8: Chicken broccoli rice hotdish, corn, fruit.
Fri., May 9: NO SCHOOL.
Mon., May 12: Biscuits & gravy, hash browns, egg, fruit.
Tues., May 13: Pizza hotdish, tossed salad, fruit.
Weds., May 14: Slushburger, chips, raw vegetables, fruit.

East Fairview
Thurs., May 8: Pork/veggie egg roll, fried rice, corn, pineapple.
Fri., May 9: Chicken strips, rice, green beans, pears.
Mon., May 12: Deli sandwich, corn chips./salsa, salad, apples.
Tues., May 13: Biscuits & gravy, carrots/cucumbers, fruit salad.
Weds., May 14: Chef salad, buttered noodles, roll, grapes.

Rau School
Thurs., May 8: Cook's choice.
Fri., May 9: Sandwich, chips, fruit, veggies.
Mon. May 12: Cook's choice.
Tues., May 13: Breakfast for lunch.
Weds., May 14: Fajitas, rice, salad, pudding.

Richey School
Thurs., May 8:Chicken fried steak, mashed potatoes/gravy, corn, fruit.
Fri.,May 9: Super nachos, apple, cake.
Mon., May 12: Chicken burger, pickles/tomato/onion, french fries, fruit.
Tues., May 13: Pizza pasta, bread, corn, fruit.
Weds., May 14: Chicken fajitas, spanish rice, mandarin oranges, brownie.

Savage School
Thurs., May 8: Tostados, refried beans, tropical fruit.
Fri., May 9: Turkey/ham wraps, veggie salad, apple-sauce.
Mon.,May 12: Chicken fajitas, lettuce salad, apples/oranges.
Tues.,May 13 : Italian bake, bread stick, peas/carrots, pears.
Weds.,May 14: Cook's choice.

Lambert School
Thurs., May 8: Super potato oles, fresh veggie, fruit.
Fri., May 9:Ham & turkey sub, fresh veggies, chips, broccoli salad, fruit.
Mon., May 12:Taco, fresh veggies, caramel roll, fruit.
Tues., May 13: Chicken patties, mashed potatoes, gravy, green bean, pears.
Weds., May 14: Grilled cheese, tomato soup, fruit.

Culbertson School
Thurs., May 8: Enchiladas, chips & salsa, pineapple chunks.
Fri., May 9: Grilled cheese, tomato soup, carrot & celery sticks, mandarin oranges.
Mon., May 12: Orange chicken, rice, peas, fruit cocktail.
Tues., May 13: Taco bowl Tuesday, pears.
Weds., May 14: NO SCHOOL.

Froid School
Thurs., May 8: Cooks choice.
Fri., May 9: Hamburger deluxe, wedges, salad bar, fruit.
Mon., May 12: Chicken alfredo sauce over noodles, carrots, fruit.
Tues., May 13: Pulled pork sandwich, baked beans, chips, salad bar.
Weds., May 14: Ham, cheesy potatoes, peas, salad bar, pudding dessert.

What Will Your Story BE?

Submitted by Richland County Injury Prevention Team

Leave your mark on this world in your own way....not on the highway. Buckle up each and every time and never text and drive. One crash may be one too many. Be prepared to do your part and keep your community safe no matter which road you take.
The Richland County Injury Prevention Team as a partner in "Partnership for Promise" would like to remind RICHLAND COUNTY GRADUATING SENIORS to continue to use the knowledge and skills they have acquired over the last 12 years as they continue on their journey

to independence. One of the promises the partnership works to instill in our youth is safe places... Not only does this pertain to shelters but our roadways as you travel to your destinations.
Your parents and those who love you have instilled values and ethics that not only keep you safe and healthy but your community safe and healthy. They have given you skills to help you succeed and move on to your next adventure. Remember all that you have learned....some mistakes aren't worth making and may not give you the opportunity to learn from them.
You have statements to make, changes to orches-

trate...be here to do it! Teen drivers die at 4 times the rate of adult drivers 25-69. Drivers under 21 have the highest rate of fatal crashes. The Death rate from motor vehicle crashes in Montana for 14-18 year olds is 50% higher than the national rate. You spent 12 years learning, participating and achieving...don't become a negative statistic... Make the choice to be a part of the positive change.
According to the Montana Office of Public Instruction, motor vehicle crashes remain the highest cause of death for teens ages 15-19. Youth are listening to the messages... speeding & alcohol-related fatalities involving teen drivers

are down yet vehicle crashes are still taking a toll on youth. The text can wait, the call can wait! By focusing on your surroundings and the road ahead you will arrive to tell your story.
2013 Montana Youth Risk Behavior Survey
Montana Office of Public Instruction
61.3 % of high school students talked on a cell phone while driving
55.8 % of high school students texted while driving
51.2% of high school students always wore a seat belt when driving
47.8% of high school students always wore a seat belt when riding in a car
24.5% of high school

students rode with a driver who had been drinking alcohol
12.6% of high school students drove when drinking alcohol
It's a choice you have the power to make. Make the one that will keep you safe and healthy and the opportunity to continue your story. There are many milestones waiting for you. Further Education, Career, Home, Family, Travels... you will make a difference in this world ~ make it a positive one.
CONGRATULATIONS AND SAFE TRAVELS...From the Partnership for Promiseand all their partners who are promoting safe healthy environments for our youth.

Spring Savings at MURPHY MOTORS!

We Purchase Cars & Trucks Outright too! Just ask for Rick!

4.2 YR. ATOO. PW. PL. TILT. SC. CHROME WHEELS. CREW CAB. STEEL. GREY/EBONY LEATHER. 30,502 MILES. 04015A	3.5YR ATOO. PW. PL. TILT. SC. AM/FM/CD. PSEATS. LEATHER. PSUNROOF. ALM WHEELS. SILVER/GRY LEATHER. 74,400 MILES. C5P58A	4YR. 5.3 YR. ATOO. PW. PL. TILT. SC. PSEATS. HTD SEATS. AM/FM/CD. NAV. PSUNROOF. DVD. ONYX BLACK/EBONY LEATHER. 77,899 MILES. U6A72B
\$38,995 2012 GMC SIERRA DENALI AWD	\$14,995 2007 TOYOTA AVALON TOURING	\$24,995 2007 GMC YUKON SLT-2
6.2L V8 ATOO. PW. PL. TILT. SC. AM/FM/CD. PSEATS. HTD SEATS. 2" GRILL GUARD. ASSIST STEPS. T COVER. CHROME WHEELS. SILVER/ TITANIUM LEATHER. 73,704 MILES. C6D8A	2.4L 4CYL ECO. ATOO. PW. PL. TILT. SC. PSEAT. A/C. ALL WHEELS. AM/FM/CD. SEDAN. WHITE/EBONY CLOTH. 18,610 MILES. U5729B	3.6 V6. ATOO. PW. PL. TILT. SC. AM/FM/CD. PSEAT. BLACK/EBONY CLOTH. 26,291 MILES. U6294A
\$29,995 2012 CHEVROLET LTZ EXT CAB	\$22,495 2013 CHEVEROLET MALBU ECO	\$17,995 2013 CHEVROLET IMPALA LT
5.3 V8. ATOO. PW. PL. TILT. SC. PSEAT. AM/FM/CD. AWD. ASSIST STEPS. WHITE/ EBONY LEATHER. 31,426 MILES. C5337A	6.6 DSL. ALLISON AT. PW. PL. TILT. SC. A/C. PSEATS. HTD SEATS. AM/FM/CD. RUN BRODS. GOOSENECK HITCH. FIRE RED/EBONY LEATHER. NAV. 65,600 MILES. 06078A	3.6 V6. ATOO. TOURING. PW. PL. TILT. SC. AM/FM/ X/CD. DVD. STOW-A-GO SEATING. CAPTAINS. WHITE/GRY LEATHER. 34,613 MILES. U6073A
\$30,995 2012 FORD F-150 CREW LARIAT	\$44,995 2012 GMC 2500 SLT CREW-LONG BOX	\$22,495 2013 CHRYSLER TOWNE & COUNTRY
4CYL. ATOO. PW. PL. TILT. SC. A/C. AM/FM/ CD. MEDIUM BLUE METALLIC/EBONY CLOTH. 32,913 MILES. U6055A	5.3YR. ATOO. PW. PL. TILT. SC. PSEATS. HTD SEATS. AM/FM/ XM CD. AXA. WHITE/ EBONY LEATHER. 104,811 MILES. C5593A	2.4 4CYL. ATOO. PW. PL. TILT. SC. AM/FM/CD. WHITE/EBONY CLOTH. 20,595 MILES.
\$15,995 2013 TOYOTA COROLLA	\$23,995 2009 CHEVROLET 1500 LTZ CREW	\$17,995 2013 CHRYSLER 200 TOUR SEDAN
3.6V6. ATOO. CXL. PW. PL. TILT. SC. PSEATS. A/C. AL WHEELS. BLUE/ TITANIUM LEATHER. 15,616 MILES. U5606A	4CYL. PW. PL. TILT. SC. AM/FM/CD. FIRE RED/ EBONY GREY CLOTH. 33,223 MILES. U4054A	XL 2 DOOR. 4.0 V6 ATOO. AXA. AM/FM/CASSETTE/ CD. CUSTOM WHEELS & TIRES. GREY METALLIC/ CLOTH SEAT. 540,187 MILES. U5775B.
\$23,995 2011 BUICK LACROSSE AWD	\$13,695 2012 TOYOTA YARIS 5 DOOR	\$10,995 2005 FORD RANGER EXT CAB

Murphy MOTORS

Mark Waggoner is "The Credit Doctor"

Credit Concerns? Apply online at www.NDcreditDR.com

26 YEARS OF SERVICE

SEE THESE SALES CONSULTANTS FOR QUALITY CAR BUYS!

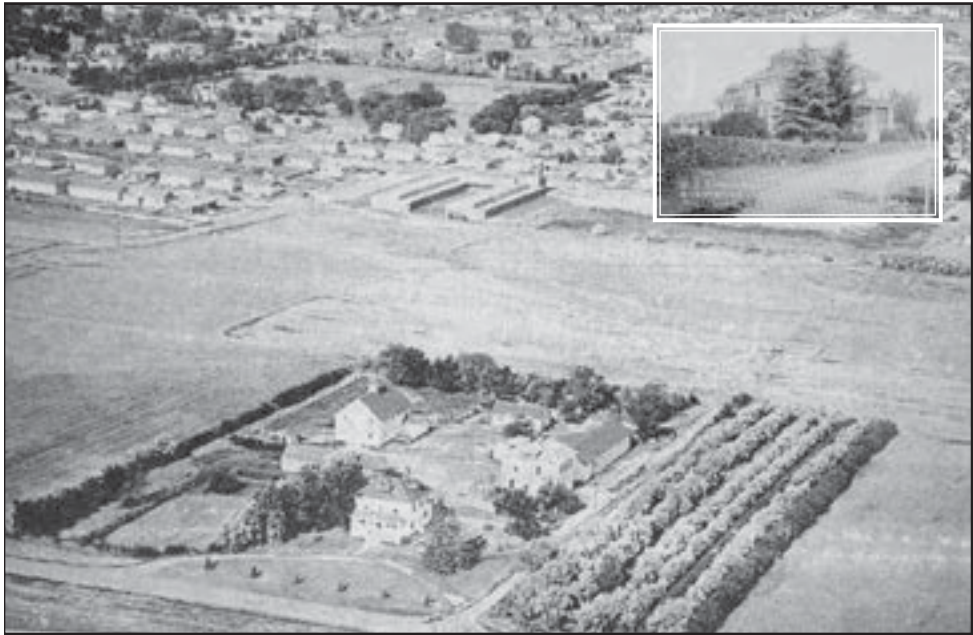
Phil Murphy Sales	Mark Waggoner Credit Doctor	Rick Mac Sales Manager	Sam Brauer Sales Manager	Kelly Burroughs Fleet Manager	Anthony Thompson Business Manager
Danly Falcon Fleet Sales	Larry Beavert Sales	Pauli Ajo Sales	Tom Tobey Sales	Bill Staines Sales	Jeremy Ramirez Sales

Se Habla Espanol

1801 2nd Ave. W. Williston, ND Call 1-800-888-2927 or 701-577-2927 • Hours: Mon. 8am-8pm; Tues.-Fri. 8am-6pm; Sat. 9am-5pm

www.murphymotors.com

History of the Williston Research Extension Center



The first aerial photo of WREC. Inset: The first farm house built in 1907-1908

By Tie Shank
Owned by North Dakota State University, the Williston Experiment Station, now known as the Williston Research Extension Center, was established by House Bill 240 on March 13, 1907.

It originally sat on 160 acres north-east of Williston along the Little Muddy Creek. In 1953 the legislature permitted relocation of the Station and the sale of 80 acres of the original 160 acres. The 80 acres retained by the State of North Dakota is now the site of Williston State College.

Money from the sale of the 80 acres was used to purchase 640 acres of land, build two dwellings, a machine shed, a seed house, a shop and a garage along with site improvements, such as roads and a water system. All of this was done in 1953 and 1954 for only \$175,000!

In 1985 the legislature permitted purchase of an additional 160 acres of land.

In 1989 the name changed from Williston Experiment Station to Williston Research Center, which was later amended to Williston Research Extension Center

(WREC). The WREC sits at 14120 Hwy 2 West in Williston.

In 2001, an additional 160 acres were purchased in the Nesson Valley and an irrigated research and development project was established. WREC research studies are conducted on crop variety evaluation, herbicide performance and other cultural management research, cropping systems and soil and water conservation practices. The main dryland crops are spring wheat and durum. Barley, oats, safflower, pea, lentil, chickpea, canola, flax, alfalfa and other alternative crops are also grown as cash crops or for livestock feed. The acreage is currently farmed by NDSU – WREC staff.

WREC research is intended to increase the producer's net profit, support crop diversification, and encourage more intensive cropping and irrigation development. Research on soil and crop management systems for sprinkler irrigation, on alternative irrigated high value and value-added crops and on western malting barley programs are conducted for the region. WREC also conducts variety development

research on safflower, winter wheat, and durum and variety evaluations in cooperation with NDSU Main Station scientists. WREC produces and supplies foundation seed to area farmers of new and old varieties adapted to the region.

Mission - The Williston Research Extension Center conducts research to increase agricultural productivity in the semi-arid region for north-western North Dakota while achieving a necessary balance between profitability and conservation of natural resources.

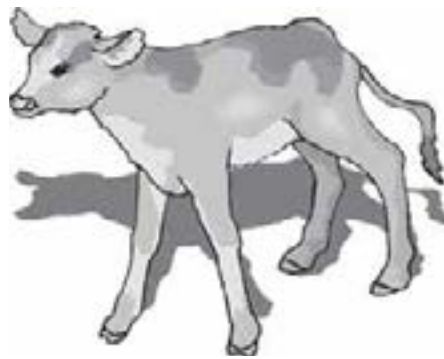
Research on soil and crop management systems for sprinkler irrigation and alternative irrigated high-value/value-added crop production at the Nesson Valley site are conducted in cooperation with the Montana State University Eastern Agricultural Research Center, USDA-ARS Northern Plains Agricultural Research Laboratory in Sidney, Montana, and NDSU and other university scientists.



WREC today.

Vaccines Now Available!

- **Branding Supplies**
- **Vaccines** *(preorders are suggested to ensure availability)*
- **De-wormers**
- **Fly Tags**
- **Implants**
- **And More!**



Don't forget about our wide variety of Purina Animal Nutrition!



Taylor Ag Services, Inc.

701-444-3772 | www.taylorag.com | Watford City, ND

Montana Newspaper Association/ Montana PBS to Sponsor U. S. House and Senate Debates

Submitted by Jim Rickman

The Montana Newspaper Association and Montana PBS have joined together to sponsor the first United States Senate and United States House of Representatives candidate debates of the political season.

The debates will be held in the Library Auditorium at Montana Tech in Butte on Saturday afternoon, June 14, 2014. The U. S. Senate debate will begin at 1:30 p.m., followed by the U. S. House debate at 3:30 p.m. The debates will be recorded and broadcast on MontanaPBS on Sunday, June 15, 2014: House at 5:00 p.m. and Senate at 6:30 p.m.

The debates are free and open to the public. Seating is limited.

REAL ESTATE, HOUSE & RANCH

AUCTION

SUNDAY, MAY 18, 2014 1:00P.M.

OWNERS: Dick & Wava O'Connor



FOR MORE INFORMATION:
Rick Kniepkamp 406-485-2548 or 406-939-1632
Lunch will be available



LOCATION: From Sidney, MT- Junction 16 & 200 take Highway 23 N for 6 miles, turn right on Highway 202 E toward Beach, ND for ½ mile

Owner have the right to accept or reject any and all bids.

LEGAL DESCRIPTION: 24.13+/- ACRES in Section 18, Township 22N, Range 60E. The Legal Description is too long to print.

HOUSE & BUILDING DESCRIPTION: 1500 sq ft house, 3-bedroom, 2 ½-baths, full basement, central air, propane heat, underground sprinklers, attached 2-car garage, 40x60 Pole Shed w/partition, a 10x16 granary.

A title commitment has been ordered and will be available, at their request, to prospective buyers for inspection prior to sale day. The above may or may not be the proper legal description; it was taken from the Richland County Tax Receipts.

TAXES: Taxes will be pro-rated from the day of closing.

TITLE INSURANCE: Standard owner's

title insurance will be provided by the seller through Richland County Title, 1050 S Central, Sidney, MT 406-433-8584

TERMS: Cash, 10% down sale day, the balance due at closing approximately 30 days from sale date at the office of Richland County Title, 1050 S Central, Sidney, MT 406-433-8584

BUYERS PREMIUM: A 2 % Buyers premium will be added to the winning bid price to arrive at the total contract price paid by the purchaser.

Your bid is considered acceptance of the terms of this auction. If you, the Buyer fails to close, the down payment is non-refundable. If the Sellers fail to close, 100% of the down payment will be returned. At this time, there is no known reason that the Sellers would not be able to close. All funds are held in the escrow account of Richland County Title, 1050 S Central, Sidney, MT 406-433-8584

All information is from sources deemed reliable, but is not guaranteed by the Sellers or the Auctioneers. Offering is subject to error, omission, and approval of purchase by owner. We urge independent verification of each and every item submitted to the satisfaction of any prospective buyer. It is every potential bidder/purchaser's sole responsibility to accomplish his or her due diligence in whatever manner he or she deems advisable. Announcements made sale day take precedence over any printed materials. The property sells "As is-Where is."

R-K Statewide Auction Service and its auctioneers are acting solely as auctioneers for the Sellers.

FOR MORE INFORMATION CONTACT:
R-K Auction Company
www.r-kauction.com
Rick Kniepkamp • (406)485-2548 or (406)939-1632 cell



TRACTOR, VEHICLES, TRAILERS & WAGON

•Ford 9030 8i-Directional Tractor w/bucket & grapple, 1724 hrs
•1967 Intl 1600 Truck, 16' box & hoist
•1987 Ford Supercab F150 XLT Lariat Pickup, 4-speed, 4x4, 54,000 miles
•1978 Chevy Scottsdale 20 Pickup, 4-speed, 4x4
•1993 CM Bumper-pull 15' Horse Trailer
•Rawhide 7'x21' Gooseneck Stock Trailer
•Antique Wagon

AUCTIONEER'S NOTE:

Dick and Wava have moved into Retirement Homes. This is a "must see" property and only 10 minutes from Sidney! There is a nice variety of items at this auction. Hope to see you SUNDAY, May 18, 2014!

Rick

All information is from sources deemed reliable, but is not guaranteed by the Sellers or the Auctioneers. Offering is subject to error, omission, and approval of purchase by owner. We urge independent verification of each and every item submitted to the satisfaction of any prospective buyer. It is every potential bidder/purchaser's sole responsibility to accomplish his or her due diligence in whatever manner he or she deems advisable. Announcements made sale day take precedence over any printed materials. The items sell "As is-Where is."

R-K Statewide Auction Service and its auctioneers are acting solely as auctioneers for the Sellers.



GUNS

•Winchester 30 30 Lever Action Rifle, model 94
•Winchester 22 mag RF Lever Action Rifle, model 255
•Winchester 12 gauge pump Shotgun, model 12
•Marlin 22 SL&LR Bolt action rifle, model 806

BOAT, AUGER, YARD, LIVESTOCK EQUIPMENT & SHOP

•6" SpeedKing Auger & Motor
•JD 110 Riding Lawn Mower
•2 Horse Bale Feeders
•(3) Saddles
•Halters, Bridles, Hackamore
•(20) 10' Portable Panels
•(3) pt Post Hole Digger
•Small Cement Mixer (no motor)
•Honda 6500 SX Generator
•LaSota Welder
•Acetylene Welder & Bottles
•Space Heater
•Industrial Air Compressor
•Bench Grinder
•Bench Vice
•300 gallon Fuel Tank
•Pickup Fuel Tank
•Drill, Many Wrenches
•Hammers, Chisels, Saws
•Many Aluminum Ladders
•Handy Man Jack
•Branding Pot
•Grease Guns
•Grass & Bit
•Traps, Gas Cans
•Wheel Barrow
•Pitch Forks, Shovels
•Sylvan Aluminum Boat

ANTIQUES

•(5) Wagon Wheels
•Wood Barrel
•Anvil
•Coggshall Saddle
•Spurs, Halmes
•Chaps, Horse Collar
•(2) Small Saddle Seats

•Buck Saw
•Antique Wrenches
•Antique Rocker
•Antique Bed Frame
•(2) Dressers w/mirrors
•Dresser, Trunk
•Phonograph, Records

HOUSEHOLD

•Couch
•Rocker/Recliner
•Rocking Chair
•(4) Wood Chairs
•Wood Desk & Chair
•End Tables
•Table & 4 Chairs (wood)
•China Hutch
•Montana Furniture Large Bedroom Set (queen headboard w/enclosed shelves, dresser w/mirror)
•Chest of Drawers
•Blonde Dresser
•Cedar Armoire
•Hospital Bed

•Pictures
•Book Shelf
•Lamps
•Many Vacuum Cleaners
•Tin Storage Cabinets
•Dell Computer (new)
•Many Books
•4-drawer Steel File Cabinet
•Pots & Pans
•Misc Kitchen Items
•BBQ
•Golf Clubs
•Large Electric Fireplace
•Eden Pure Heater
•Insight Reading Machine



RK
Rick Kniepkamp

Circle, Montana Statewide Auction (406) 485-2548

WE SELL & ADVERTISE ACROSS THE UNITED STATES

www.r-kauction.com

Rick Kniepkamp (406) 485-2548 or cell (406) 939-1632

Quality And Service Under One Roof!

**CARGO
FLATBED
UTILITY TRAILERS
DUMP • ATV
SNOWMOBILE
TRAILERS
TOOL BOXES
FULLY STOCKED
PARTS &
ACCESSORIES**

**FULL SERVICE
REPAIRS**



Mark Brodhead, Manager
406-480-7332



Jim Bell, Manager
406-480-7249



Structures To Suit Every Need!

**EXCAVATION TO
COMPLETION,
OR MATERIALS ONLY
DESIGN SERVICES
AVAILABLE**



Mobile Fabric Buildings

Bill Ackley
406-480-3358

Open M-F: 8am - 5:30pm • Sat: 9am - 1pm

34940 Hwy 23, Sidney | Office: 406-433-1888

South of Sidney at the blinking light

Mother's Day Buffet
9am - 2pm, Sunday, May 11
Serving Waffles, Sausage, Eggs,
Roast Beef, Fried Chicken,
Mashed Potatoes & Gravy
Full Salad Bar & Array of Desserts

Kountry Catering

Reservations Recommended
Catering At The Elks Lodge
310 2nd St. SE, Sidney
Call 406-433-5005 For Reservations

Olympic Wrestlers Coming To Watford City

By Mitch Greenwood
A trio of wrestlers will visit Watford City, all of them having many ties to the Olympics. The Wolves Wrestling team will be hosting their second annual Bootcamp Wrestling Camp from June 4-6 and camp director Dwight Griffin has lined up an all-star cast of clinicians to headline this event. Each day of the three-day camp, a different clinician will be featured.

Kicking off the camp will be one of the most decorated wrestlers in the history of the United States, Bruce Baumgartner. Baumgartner has medaled in four different Olympic games, winning two gold medals, a silver, and a bronze. He has also medaled nine separate times at the World Championships that are held in non-Olympic Years, yielding three gold medals, three silver medals, and three bronze medals. On top of his world accolades, he is a 16-time United States Champion. "When people talk about the greatest wrestlers in the history of the world, his name is pretty close to the top of that list," explained Mitch Greenwood, the Wolves head wrestling coach. "To have him coming to Watford City to teach our kids about wrestling and to share his stories is truly an honor! It's an honor to have all of these guys coming here."

While this will be Baumgartner's first trip to Watford City, the other two clinicians are making a return trip after being part of the first Bootcamp Wrestling Camp last summer. Day two

will feature another Olympic Gold Medalist, Steve Fraser. Fraser, a past two-time NCAA All-American for the Michigan Wolverines, was the 1984 Greco-Roman Olympic Champion. While many Americans had won Freestyle Olympic titles, Fraser was the first American ever to win gold in the Greco-Roman style. Fraser also won the 1984 US Open in Freestyle. He has been on the US Olympic Greco Roman Coaching Staff since 1995 and currently serves as the head coach for the Olympic Team. Also making a return trip to Watford City is Dan Russell. Russell was a four-time undefeated state champion in Oregon during his high school days. He followed that up with four straight NCAA Division 2 Championships while wrestling for Portland State. Russell also attended two Olympic Games as an Alternate on Team USA and was a World Champion in 1995. Russell has also served as a National Team coach for Team USA youth wrestling.

Last year, the Bootcamp Wrestling Camp featured just over 40 participants in grades

two through twelve from Watford City, Bowman, Stanley, Tioga, New Town, and Central Cass. Coach Greenwood and Camp Director Griffin are expecting an even larger turnout this year. "We have a lot of kids from last year who have already registered to come back again this year," stated Greenwood. "We also have a lot of interest from some new communities this year, including some out-of-state wrestlers and teams from Montana and South Dakota." Griffin, who has coached in the St. Louis, Missouri area for many years, found himself in the Watford City area through his work in the oil industry. Griffin has run camps out of St. Louis for many years and has had many other high-level clinicians such as 1996 Olympic Champion Kendall Cross who was in Watford City for last year's camp. He's also had legends Dan Gable, Rulon Gardner, Kevin Jackson, and Bobby Douglas involved in his camps. More information about the Bootcamp Wrestling Camps can be found at www.bootcampwrestling.com.

Are You Tired Of Paying More Than \$1,400 Per Month For Rent?



You can own this 4 bed/2 bath, 1140 Sq Ft home for approximately \$1,350 per month! (That includes lot rent) This home will be placed in Williston next week! This one won't last long! Please call 701-774-5310 or 701-570-9390 to secure this home!

Easy Financing Available!
Call J&J Homes For Details
3820 6th Ave. W. Williston - Behind Walmart
701-774-5310 www.HomesJJ.com



Mother's Day Week Of Specials
May 7 - 10

7 th	20% off Montana Silver
8 th	20% off Purses
9 th	20% off All Jeans
10 th	20% off Capris & Shorts

Meyers Department Store



Open Mon - Fri: 10am - 6pm • Saturday: 10am - 5pm
701-444-2906 • Toll Free: 1-877-842-2906
200 N. Main - Watford City

 Find us on Facebook

"We Have Something For Everyone"





The last day of last year's camp, all of the Watford City Wrestlers who attended pose with 1996 Olympic Champion Kendall Cross.



Watford City kids after a tough work-out session with 1984 Olympic Champion Steve Fraser.



“One Small Step For Ram.”

Back to Back Motor Trend Truck of the Year: 2014 Ram 1500

701-577-1111 1212 W 2nd St, Williston, ND

2013 2014
FIRST EVER BACK-TO-BACK CHAMPION

RAM

MOTOR TREND TRUCK OF THE YEAR

RYAN MOTORS