



The Roundup

PRSR STD
U.S.
POSTAGE
PAID
The Roundup

(406) 433-3306 or 1-800-749-3306
Fax (406) 433-4114
e-mail address:
info@roundupweb.com
www.roundupweb.com

Business Office:
Located at 111 West Main
Sidney, MT

Mailing Address:
P.O. Box 1207
Sidney, MT 59270

Wednesday, August 15, 2012

Volume 38 • Number 26

Lone Tree Gun Show



The Lone Tree Gun Show will take place this weekend, August 17-19 at the Richland County Fair Event Center in Sidney, MT. Gun and outdoor enthusiasts will be able to visit with 50 dealers from Montana, North Dakota, Wyoming, South Dakota and Minnesota. The air conditioned venue will be full with many familiar vendors as well as lots of new ones, increasing the number of tables from 144 last year to 170 this year. In addition to a huge selection of firearms, typically featured items include ammo, knives, scopes, reloading equipment and supplies, archery equipment, hunting apparel, coins, jewelry, and home décor. Kathy Beauchot will return this year with her popular hand made soap. There will also be a few "display only" tables for your enjoyment.

The Gun Show operates under the rules and regulations of the Weapons Collectors' Society of Montana and obeys all Federal, State and Local gun laws. 24 hour security is provided.

Be sure to purchase your tickets for the Gun Raffle. Only 350 tickets are sold, with first prize being a Weatherby Vanguard Sporter with your choice of 12 different calibers. Second prize is a pair of binoculars and third prize is a hunting knife. To purchase early, call Leann at 406-480-5594.

Organizers Brenda and Tim Larson and Leann and Jim Pelvit are looking forward to another exciting show, bringing vendors and shoppers from all over the region together to buy, sell, have fun and trade stories. This is Larsons' 21st year organizing the show and they still enjoy the camaraderie that goes with the event. Pelvits joined the fun over 10 years ago and also look forward to greeting vendors and the public who come back every year, as well as all the new ones.

Proceeds from the show go to local non-profit organizations. Last year, a pat trap disc thrower was purchased which is used by 4-H, Hunter Safety, Pheasants Forever and the Sidney Trap Club.

Admission is only \$3.00 per day. Children under 12 get in free. Full concessions are available all three days of the show. Hours are: Friday, August 17, 5 to 8 p.m.; Saturday, August 18, 9 am. to 6 p.m.; Sunday, August 19, 10 a.m. to 3 p.m.



Best of the West Ribfest Winners

Watford City's "Best of the West" Ribfest was held last Friday. The winning Ribfest team was MDU. Above: MDU team members (L-R) Marc Lewis, Scott Iverson, Jeremy Russell and Thomas Hoiland pose for their winning team photo. Go to www.roundupweb.com for more Ribfest pictures.

Sidney Chamber Appreciates Pre-Registration for Tractor Pull

As the Sidney Area Chamber of Commerce and Agriculture prepares for the annual Harvest Fest Tractor Pull on August 25th at the Richland County Fairgrounds they remind tractor and pickup contestants to call and preregister for this contest. Preregistration speeds up the weigh-in process which starts at 3:00 p.m. on the 25th. Gates to the arena will open at 5:00 p.m. with the contest to start at 6:00.

Along with tractor and pickup pulling is the ATV pull, which is new this year. ATV pullers should be at the fairgrounds to register at 3:00 p.m. also. Call the Chamber at (406)433-1916 to enter or receive more information.



Montana Health Officials Issue West Nile Virus Warning

Montana public health officials have reported the state's first human case of West Nile virus (WNV) in Custer County. Health officials at the Richland County Health Department and Montana Department of Public Health and Human Services (DPHHS) are cautioning people about the virus and how to minimize mosquito bites.

Since 2001 over 90 percent of past Montana cases have been reported in August and September. As of August 1, 2012, the Centers for Disease Control and Prevention (CDC) reports 241 WNV cases nation wide, including 4 deaths.

"The best way to prevent West Nile virus is to prevent mosquito bites," said Julie Brodhead RN "The more time you spend outdoors recreating or working, the higher chance you have of being bitten by an infected mosquito."

Removing mosquito breeding areas and preventing mosquito bites are two ways to help to prevent being exposed to West Nile virus. The Richland County Health De-

partment and DPHHS recommend these important prevention steps to take around your home and to protect yourself.

Eliminate Mosquito breeding areas:

Empty standing water from flower pots, buckets, and barrels.

Change the water in pet dishes and in bird baths daily. Drill holes in tire swings so water drains out.

Empty children's wading pools and store in a position to prevent water accumulation when they aren't being used.

If standing water cannot be removed, add mosquito-killing products labeled for elimination of mosquito larvae.

Prevent Mosquito bites:

Make sure you have screen protection on windows and doors to keep mosquitoes out.

Use insect repellent containing an EPA-registered active ingredient and follow the directions on the package.

Mosquito activity may increase at dusk and dawn. Use

repellent and wear long sleeves and pants at these times or stay in a mosquito protected area.

WNV infection develops in about 3 to 14 days after being bitten by an infected mosquito. About 80% of persons infected with WNV experience no symptoms. Up to 20% of persons develop a mild illness, called West Nile fever, which usually lasts a few days. For some, West Nile fever can last for several weeks. Symptoms include headache, muscle aches, and low grade fever that resolves without any treatment.

About 1 in 150 infected persons develop dangerous brain infections such as encephalitis or meningitis. Symptoms of these diseases might include headache, rash, high fever, stiff neck, mental confusion, muscle weakness, tremors, convulsions, coma and paralysis. Individuals who develop any of these symptoms should see their healthcare provider immediately.

Reduce, Reuse and Recycle with ROI

Reduce, reuse, and recycle. All of us have heard this phrase for years. Richland Opportunities, Inc., a private non-profit which supports adults with developmental disabilities, has taken recycling very seriously. Over the last 25 years, ROI has processed over 10 million pounds of cans, newspapers, and cardboard, thereby reducing stress on the city garbage crews and saving volume in the county landfill. This year ROI has seen a 28% increase in the amount of material recycled and has recycled over 686,300 pounds of cardboard, newspaper, magazines, aluminum cans, office paper, and plastic bottles and jars.

ROI's director, Cindy Eleson, stated, "The amount is amazing and is primarily due to the increase in cardboard." ROI collects cardboard from 61 businesses and makes 74 stops weekly. "Our ability to handle the increased cardboard volume is due to the new compacting garbage truck. We are grateful to the community and businesses for their support in raising the funds for the truck." ROI's recycling efforts are assisted by both the county and city, and more recently by businesses.

Many people believe that ROI makes money on the sale of recyclables. It does not. ROI has made a profit once in 25 years and ROI has subsidized the recycling program up to \$13,000 per year. Because of this loss, the City and County were approached for financial aid about 6 years ago. The benefits for the city include reducing the time to collect and compact cardboard, and recycling saves the county landfill. The \$12,000 donated by these two entities has allowed ROI to almost break even in its recycling program. Eleson explained that 2,000 pounds of cardboard sell for about \$70 and 2,000 pounds of newspaper sell for \$35. The amount

per ton does not include shipping costs and the processed material does not pay for the expenses incurred to recycle. However, the financial assistance by the city and county does keep ROI from having to cease the program. In the past few months, ROI has asked the businesses for a voluntary donation to the cardboard program. It costs over \$5 for every stop that ROI makes to pick up a businesses' cardboard. Cindy Eleson commented "Let's face it. If ROI adopted a business model, we would have been out of the recycling within two years of starting the program. ROI's board and people have committed to recycling, but we need the community's assistance. That is why the City and County were approached and without their help, we would have had to discontinue recycling. It is ROI's goal to produce our own income, and not be reliant on the city or the county. Thus we are asking for support from our cardboard customers. About one half of the businesses are now paying for the cost of their cardboard pick up. Since ROI does not make a profit on recycling, we have not been able to build our infrastructure. Most of the recycling is completed manually. Our people handle 13,250 pounds of material each week, and we need to do this in a safe manner."

Building infrastructure is a high priority, but is difficult when income is not generated. This month, ROI built a dock with the help of a PPL grant, the ROI Foundation and other contributors. The dock allows the employees to use carts for loading newspaper stacks instead of hand loading from the ground and using a step ladder for access into a trailer. With the increase in volume, ROI will need to automate as much as possible. The next goal according to Eleson is to get a horizontal baler. The price tag for a used horizontal baler is

about \$100,000 "This would allow ROI to process more material and allow us to expand the current list of recyclables."

Currently ROI has seven collection areas in the county. The sheds in Sidney are located at ShopKo (Pamida), IGA, Johnson's Hardware and Farm & Home. The community is invited to drop off newspaper and magazines, and aluminum cans in these sheds. These same items can be dropped off at collection sheds in Fairview on Loaf and Jug's property, in Savage at Valley Fuel and Supply and in Lambert at the school. On ROI's property, 1100 Silurian Lane, the community can drop off cardboard, newspapers and magazines, aluminum cans and PETE #1 bottles. This is the only drop where plastics are taken. PETE #1 is usually clear plastic like pop bottles and examples are dishwashing soap bottles, vegetable oil bottles and peanut butter jars. Eleson remarked that people are dropping off #2-7 plastic which includes milk jugs, laundry soap jugs and hair product bottles. "ROI does not recycle #2-7 plastic on a daily basis and these bottles and jars are only taken during Trashy Tuesdays along with office paper. Trashy Tuesday is the third Tuesday of the third month with the next event date of October 16th. ROI does not have the ability to take these extra items on a daily basis at this time. We keep making improvements to ensure that recycling options are added for the community's benefit. Recycling is one of the keys to saving both the city and county's infrastructure, but growth for recycling requires investment by all stakeholders." If you have questions about what ROI recycles, wish to donate to the program, or have ideas about recycling, please call 488-3341 and talk with Cindy Eleson.

Montana Make It With Wool!

The Montana Make It With Wool contest is coming up soon! The contest's objectives are: to promote the beauty and versatility of wool fabric and yarns, encourage personal creativity, recognize creative skills and develop life skills. Make plans now to enter this exciting contest. The District 5 contest will be held in Sidney, MT on Thursday, October 18. The contest is open to everyone living in District 5 and includes the categories: Pre-Teen - 12 and under, Juniors - 17-24, Adults age 25 and older, Made for Others (any age), Wearable Accessories- district & state level only (any age). The garments for Juniors, Seniors, Adults and Made for Others may enter in these categories: One-piece garment, Two-piece garment, and Ensemble. Pre-Teens may enter a dress, jumper, skirt, pants, shorts, vest, sweater, shirt/blouse, jacket or a combination. First place winners in the Junior, Senior, Adult and Made for Others category advance to the state competition held during the Montana Wool Growers convention on November 30 & December 1, 2012 at the Holiday Inn Grand in Billings MT. The Junior and Senior winners are eligible to attend the National Finals January 23 - 26, 2013 in San Antonio, Texas. Entry forms and fees are due by October 1. For an entry form or questions please contact Leslie McMillen at 406-569-2020.

BINGO Billiards & Darts

Selling New & Used: Complete Line of:

Pool Tables	Bingo Supplies
Pin Ball Machines	All Major Brand
Jukeboxes	Name Pool Cues
Video Arcades	Pool & Billiard Accessories
Foos Ball Tables	Dart Sets & Cases
All Reconditioned	Poker Chips, Cards & Dice

**10% off Pool Cues & Cases
Dart Sets & Cases**

With This Coupon Only • Expires 8-31-12

203-05 Main Street, Lower Level, Williston
Same Entrance As Veteran's Affairs & 1/2 Fashion Threads
572-6254 or 1-800-732-0962
Tuesday - Saturday 1:30 pm - 5:30 pm
Call for after or before hours appointments

TOP LINE ENGINEERING

CIVIL ENGINEERING
LAND SURVEYING
LAND PLANNING
SITE DEVELOPMENT
& ENTITLEMENTS

Arizona Office
4711 East Falcon Drive, Suite 334
Mesa, Arizona 85215
Phone: 480.969.5822

Montana & North Dakota Office
13633 Highway 200N
Sidney, Montana 59270
Phone: 701.570.2844

www.TopLineEngineering.com | Web: www.TopLineEngineering.com

Congratulations Fairview Community on your Blue Ribbon Seed Picture at the Richland County Fair



We're Proud Of You...Keep Up The Good Work!

NEU CONSTRUCTION, INC.

Fairview, MT 59221
Office: 406-742-5549

Don't get nickle & dimed for your online news and classifieds

RoundupWEB.COM

McKenzie County Area Food Pantry

Free food assistance for you and your family
All income eligible McKenzie County residents welcome!

No Referral necessary
minimal personal information requested
No ID's required

Tuesday, August 21
2 pm to 4 pm

Open the 1st Tuesday evening of each month from 5 pm to 7 pm and the 3rd Tuesday afternoon of each month

Located in the lower level of:
First Lutheran Church
212 2nd Avenue NW, in Watford City

Pantry includes new shipment of a wide variety of:
- frozen meats
- canned goods
- personal care items

For more information or to set up an appointment to visit the pantry call 701-444-3451.

Sidney Livestock Market Center Open For Business

Wednesday is "Sale Day" in Sidney. For many, many years Wednesday was the day to come to town, go to the livestock sale and then shop and conduct other business, before enjoying a great dinner and heading home. With the purchase of Yellowstone Livestock, Prewitt & Co. is hoping to bring those days back to Sidney.

The Montana Board of Livestock approved the pur-

chase August 1 and the new Sidney Livestock Market Center, LLC held its first sale August 8.

Tim and Kristin Larson will manage the Center, while Christy Albin will stay as office manager. Field man Roger Nygaard, as well as the crew at the yards have stayed on as well. Plans include hiring another field man. Superior Livestock sales will continue.

While there are no big

plans as yet, there are lots of ideas. "We want to run a good, honest, aggressive market center," co-owner Rod Prewitt emphasized. Tim Larson added, "We want it to be a competitive, fantastic market like it's always been." Kristin Larson explained that the main reason they decided to purchase the business was the fear of losing everything the livestock center brought to Sidney. "Everybody came to town on sale day, it was a

community day. There was commerce all over town with a lot of it caused by the livestock sale. We want to get the sales back up to where they used to be. We have the opportunity to have Ag at the forefront of the community again with a viable sale barn."

Ground has been broken at the livestock yard to house the new offices of Prewitt & Co. and separately, Sidney Livestock Market Center.

Larson will be visiting with farmers and ranchers in the area and welcomes calls concerning all the services Sidney Livestock Market Center has to offer. "We will try to help market your animals to the best of our ability," he stated. Call 406-482-3513 during the day, or call Tim any time at 406-480-2666.



(L-R) Tim Larson, Mike Yore and Rod Prewitt have opened the new Sidney Livestock Market Center.

Dinner Just Got A Lot Tastier!

Open for Dinner Tuesday-Saturday til 10p.m.



**Try Our BBQ Ribs
Cajun Chicken Pasta
Homemade Crème Brûlée**
Served 4:30 till close

**Fresh Homemade
Soups Daily!**

Hours: Sunday 6 a.m. - 2 p.m.
(Breakfast only)

Mexi Monday 5 a.m. - 3 p.m.
Tues. - Sat. • 5 a.m. - 10 p.m.

Sunny's
Family Restaurant

"It's Always Sunny at Sunny's!"
102 E. Main • Sidney • 406.433.1839

SUMMER CLEARANCE EVENT

CHRYSLER Jeep DODGE RAM

2012 Dodge Durango SXT

4 door, all wheel drive, 3.6-V6, automatic, AC, tilt, cruise, power windows, locks, 3rd row seating, U Connect w/Bluetooth



#4256

Retail.....	\$32,590
Chrysler Rebate.....	\$1,000*
Action Auto Discount.....	\$1,506
Sale Price.....	\$30,084

*must qualify for rebates

RAM DODGE CHRYSLER Jeep

www.actionautochryslerdodgejeep.com

ACTION AUTO

For your transportation needs, call:
433-2312 • 1-800-788-2312
220 East Main, Sidney, MT



Gary McPherson
Hm: 488-7759



Gary Schoopp
Cell: 489-2312



Kris Weltikal
Cell: 480-1830

Everything Electronic For Back To School!

We have what you need!



Laptops

Many models to choose from
Starting at **\$399⁹⁹**

Wireless Routers

as low as **\$19⁹⁹**



120 East Main St. • Village Square Mall • Sidney
406-433-4370

101 S. Merrill Ave., Glendive
406-377-3645

Mon.-Fri. 9 a.m. - 5:30 p.m. • Sat. 9 a.m. - 4 p.m.

Fantasy Football Teams Now Forming!

Draft Night is Aug. 31st



22 TVs

for all your sports action with BuzzTime Competitions

Complimentary Beverages, Wireless Internet & Smoke Shack



Open
8am-2am
Daily

& Casino

804 S. Central Ave • 406-433-4636

Call 433-4636
for takeout.

Gaming Members
Can Win Hundreds of Dollars for
Jackpot Drawings Every Day
in the spacious Private Casino!



WEDNESDAYS
LARGE PIZZA &
PAIL OF BEER \$19⁹⁹
FRIDAYS
18 WINGS &
PAIL OF BEER \$19⁹⁹

"Time Out"
4-6 p.m. Daily
Domestic Beers **\$1⁰⁰ Off**

**Opening for Full Time
Bartender**
at the Winners Pub
**Line Cooks, Bartenders,
Servers, Hosts & Bussers**
at the South 40

REAL ESTATE FINANCING
For Home Purchases & Refinancing
 Stop in today and see Janet Sergent in Sidney or Laurie Pearson in Culbertson.

Janet Sergent
 Real Estate Loan Officer

Laurie Pearson
 Culbertson Branch Mgr.

Richland
 FEDERAL CREDIT UNION

101 West Holly St. • Sidney, MT (406) 482-2704
 18 East 2nd St. • Culbertson, MT (406) 787-5890

NCUA

For all your Farm/Ranch, Recreational, Residential, and Commercial needs.

Alan Seigfried
Amanda Seigfried

Jim & Janice Knudsen 120 2nd St. N.E. • Sidney Mt. 59270
 Broker/Owners (O) 406-433-3010 • (C) 406-489-3010
 email: alans@midrivers.com
Website: www.missouririverrealty.com

Yellowstone Chiropractic Clinic

(406) 433-4757 222 2nd. Ave. SW
 1-866-433-4757 Sidney, MT 59270

Dr. Ryan Laqua
 Chiropractic Physician

• Sports Injuries • DOT Physicals
 • Personal Injuries & Pain Conditions

Thank You!

Although it seems so impersonal and very vague to say thank you to an entire community in one little note in the newspaper, after learning of Clara's leukemia diagnosis, we quickly realized that reaching out and thanking each individual who has taken time and energy to support our family is nearly impossible. We knew we lived in a fantastic community, but we have been overwhelmingly reminded of this during the past two months. Thank you to everyone who called, texted, emailed or checked in on us via Caring Bridge. If we didn't return your phone call or message, please know that it was received and greatly appreciated. Thank you to everyone who sent care packages, gifts and cards to us while in Rochester. The mail ladies in the hospital knew us on a first name basis and our doctor care teams chuckled each time they came to visit as our room kept filling up with more boxes and packages. Whenever Clara became restless or frustrated in the hospital, we let her open a new package which always redirected her thoughts into an excited feeling of what was she would find in the next box. The mail room at the hospital had to arrange a special delivery truck to transport our packages to the Ronald McDonald House after we checked out, and the mail room office manager said she has never had to do that in her fifteen years of employment there. Thank you to the people who visited us while staying at the Ronald McDonald House in Rochester. Our schedule was very unpredictable and completely dictated by doctor appointments, how Clara felt, and how able her body was to fight off any germs she encountered. Everyone who came to visit was so understanding of this and flexible to what she needed. Thank you to everyone who paid special attention to Amelia while she was still in North Dakota after we were flown to Rochester. Being away from her for almost two weeks was very difficult, but she had lots of great stories to tell of the many adventures she had been on with family and friends while we were away. Also, thank you to our neighbors who came to our house and simply took care of things without even having to be asked when we left on such short notice. Thank you to the many, many people who have put in their time, energy and resources to organize benefit activities for Clara's medical expenses. It absolutely never ceases to amaze us how individuals in our community, including the extremely diverse range of people from our very best friends, to people we have never even met, have hearts large enough to help out families in need time and time again. Each time we would receive a phone call from a benefit organizer or participant sharing what they would like to do next, or reporting in on how generous community members had been, we were flooded with emotions. It was, and continues to be completely amazing and overwhelming to know that so many people are pulling for us at home. Clara has the terrible misfortune of having leukemia, and does have a long road ahead of her. But when we take a second to step back and look at the entire picture of our situation, we quickly realize that Clara is a very lucky little girl due largely to the community in which we live. Thank you to our entire community for being so kind, generous, caring and uplifting. We appreciate it from the bottom of our hearts.

Beau, Heather, Amelia and Clara

Walking to Wellness Hydration & Healthy Eating

By Staci Miller

As the 4th Annual Walking to Wellness event approaches, part of the training is to be aware of what you put into your body.

The principal component in your body is water making up approximately 60% of your body weight. Every system in your body depends on water. While training for an event, it is especially important to stay hydrated. Drinking eight 8-ounce glasses of water a day is a good guideline. Remember to

stay hydrated every day. It is important to drink fluids throughout the day – not just before and after a workout.

Experts agree the key to healthy eating is the time-tested advice of balance, variety and moderation. Seasoned rubs are the secret to adding tons of flavor — without lots of fat — to grilled meat, chicken, seafood and more. Follow these ten tips to maintain healthy eating habits.

1. Eat a variety of nutrient-rich foods.
2. Enjoy plenty of whole grains, fruits and vegetables.
3. Maintain a healthy weight.
4. Eat moderate portions.
5. Eat regular meals.
6. Reduce, don't eliminate certain foods.
7. *Balance your food choices over time* - If you miss out on any food group one day, make up for it the next.
8. Know your diet pitfalls.
9. Make changes gradually.
10. Remember, foods are not good or bad.

To register or for more information for the 4th Annual Walking to Wellness event, call or stop by the Foundation for Community Care at 406-488-2273, 221 2nd Street NW, Sidney, MT. Get your shoes on and "Walk to Wellness"!!

Only Two More 'E-rase Your E-waste' Events Planned For 2012

The final summer "E-rase your E-waste" collection event is coming up Thursday, August 16th from 3-7 pm at the Richland County Shop in Sidney. The event is FREE and is the last of four mini-collections planned for the summer months as part of the 2012 E-rase your E-waste campaign.

However, the program still has its annual fall weekend collection event to go yet on Friday and Saturday, Sept. 7-8, so if you can't make it this Thursday, you'll have one last chance to clean your closets before winter gets here.

All collections are held at the county repair shop at 2140 W. Holly in Sidney, next to the Fairgrounds. Signs will be posted.

UNICOR is the e-cycler for all the collections, and all acceptable items can be recycled for FREE. More information on acceptable items is available at www.ars.usda.gov/npa/nparl/ewaste.

Volunteers will be available to help with loading and unloading, however, businesses, schools and other organizations with large amounts of e-waste to recycle are asked to make an appointment to drop off their items by calling Jackie Couture at 406-433-9422. Please leave a message.

Richard H. Engstrom, 92, Sidney, MT

Funeral services for Richard H. Engstrom were at 2 p.m. Monday, August 13, 2012 at the Bible Baptist Church with Pastor Michael Backus officiating. Interment with Military Honors provided by the VFW post #4099 of Sidney and the Montana Honor Guard was held in the Sidney Cemetery, Sidney, MT under the direction of Fulkerson Funeral Home of Sidney. Remembrances and condolences may be shared with the family at www.fulkersons.com.

On August 7, 2012, at the age of 92 and after a valiant 22-year battle with prostate cancer, Richard left the loving arms of his family and was welcomed into the loving arms of his Lord.

Darvin Ruggles, 85, Sidney, MT

Graveside services for Darvin Ruggles will be at 2 p.m. Thursday, August 16, 2012 in the Fairview Cemetery, Fairview, ND with Pastor Richard Eggar of the Church of Christ in Sidney officiating. Fulkerson Funeral Home of Sidney is in charge of arrangements. Remembrances and condolences may be shared with the family at www.fulkersons.com.

Darvin died on Saturday afternoon, August 11, 2012 at the Sidney Health Center Extended Care Facility.

STATISTICS

Lake Water Level Reports

	Fort Peck	Sakakawea
Current Elevation	2235.0	1836.6
Last Week's Elev.	2235.6	1836.3
One Year Ago	2236.1	1859.0
Release For Day (C.F.S.)	11,300	24,600

Watford City Weather Data

Source: North Dakota Agricultural Weather Network

Date	High	Low	Precip.
Aug 5	82	51	0.02
Aug 6	89	63	0.00
Aug 7	94	65	0.00
Aug. 8	87	62	0.00
Aug. 9	87	59	0.00
Aug. 10	82	65	0.00
Aug. 11	85	60	0.04

Sidney Weather Data

Source: MSU Eastern Agricultural Research Center

Date	High	Low	Precip.
Aug 5	89	48	0.00
Aug 6	95	52	0.00
Aug 7	85	58	0.01
Aug. 8	87	56	0.00
Aug. 9	89	57	0.00
Aug. 10	89	63	0.00
Aug. 11	76	60	0.00
Average YTD Precipitation			9.82
2012 YTD Precipitation			8.46

EVENTS

SEND US YOUR EVENTS!

THE ROUNDUP: PO Box 1207, 111 West Main, Sidney, MT 59270
 406-433-3306 Fax: 406-433-4114
 Email: classads@esidney.com

Richland County

Events in Sidney unless otherwise listed. MT Zone.

- Wed., Aug. 15**
7 p.m. — Gambler's Anonymous, Millers' Corner back room.
- Thurs., Aug. 16**
12 p.m.—Sidney Kiwanis-Elks Lodge, 123 3rd St. SW
12:45-1:45 p.m.—Senior Potluck-813 3rd St. NE
3-7 p.m.—Erase your Ewaste-Richland County Shop, 1240 W Holly.
5 p.m. — TOPS, Crestwood NW entrance, Weigh-ins 5-5:30 p.m., Meeting 5:30-6 p.m.
6:30 p.m — Pinochle, Moose Lodge- 101 3rd St. SE.
8 p.m. — NA meeting, Millers' Corner banquet room.
- Fri., Aug. 17**
7:45 a.m.—Farmers Market, RFCU parking lot-201 W. Holly St.
5-8p.m.—Lone Tree Gun Show-Richland County Event Center. \$3.00 admission, children under 12 free. Info: Leann Pelvit, 406-480-5594.
- Sat., Aug. 18**
9a.m.-6p.m.—Lone Tree Gun Show-Richland County Event Center
9 a.m. & 7 p.m. — AA meeting, Trinity Lutheran Church Education bldg., 214 S. Lincoln.
5p.m.—Ranch Sorting, Sidney Saddle Club. Info: Tabitha 406-478-4399.
- Sun., Aug. 19**
10a.m.-3p.m.—Lone Tree Gun Show-Richland County Event Center
7 p.m. — AA meeting, Trinity Lutheran Church Education bldg., 214 S. Lincoln.

Mon., Aug. 20
12 p.m. — AA meeting, Trinity Lutheran Church Education bldg., 214 S. Lincoln.

Tues., Aug. 21
1-6p.m.—Red Cross Blood Drive-St. Matthew's, 310 7th St SE. Appointments: 1-800-733-2767.
7 p.m. — AA meeting, Trinity Lutheran Church Education bldg.

McKenzie County

Events in Watford City unless otherwise listed. CT Zone.

- Wed., Aug. 15**
8 p.m.— Al-Anon, Sanford Room, McKenzie Co. Public Library.
- Thurs., Aug. 16**
8 p.m.— AA Group, Northern Pump & Compression. Call 770-3603 or 770-2675 for directions or ride.
- Friday, Aug. 17**
6-8 p.m.—Arnegard-Hamburgers in the Park-sponsored by Arnegard Lions Club. (Fundraiser)

AREA EVENTS

Saturday, Aug. 18
 31st Annual Encampment at Fort Buford
 Info:701-572-9034

2nd Annual Missouri River Catfish Clash, Williston, ND. Register by Aug. 17 at www.montanacats.com. Info: Call Steve at 406-489-1170

See all monthly events on our calendar at www.roundupweb.com.

Service Man's Daughter Dedicates Song to Father

By Linda Welch

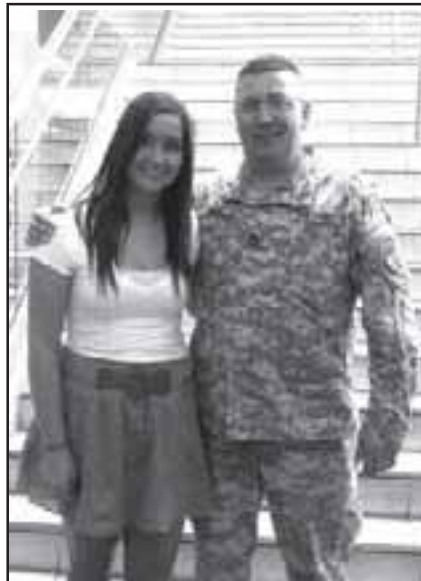
Alexis Fleener, 18, writes songs for her dad, Darren Linde. "It's one of the worst feelings, on the other hand it's one of the best feelings, knowing he's protecting everything we work for." Darren is stationed in Afghanistan (his second tour of duty) for the Army National Guard. Darren was offered a job as instructor at the Regional Army Institute two years ago, and a part-time job became a full-time lifestyle. "It's a commitment. He's gone not just for deployment, but months of training before he's deployed." The family recently moved to Devil's Lake, North Dakota from Sidney, Montana.

Military dads miss out on a lot- Darren wasn't there for Alexis' high school graduation in May of this year. Alexis moved to Illinois for college one week after graduating, and that made it a really tough time for mom Adrienne. Witnessing a milestone without one's spouse is one of the hardest things to do. Adrienne still has a daughter and a son living nearby in Devil's Lake. Another daughter lives in Fairview, Montana.

Darren's family includes parents Dwight and Lana Linde of Williston, ND and Dennis and Debbie Buxbaum of Sidney; and siblings Amanda Buxbaum Skogen of Sidney and Darcy Conckergood of Helena, MT.

The family went on a Mexico cruise in February 2012. They took lots of family with them, making memories to help them get by while Darren would be away.

Always a singer, Alexis started putting videos on YouTube in her junior year. She sang country, then country-pop, and now does whatever she likes. She wanted people to hear not just the song, but hear the story. Her love for her dad and pride in his work sounds out in every note. You can see Alexis' video at www.youtube.com/watch?v=0XvYUKFN2I or at www.roundupweb.com



Alexis Fleener with her dad Darren Linde.

Kids First! Carnival Looking For Interested Vendors

The Sidney Education Foundation, Inc., The Richland County Family Resource Center, and the Boys & Girls Club of Richland County have teamed together again this year to sponsor the third annual Kids First! Carnival this fall. All three groups focus on children, families, and education, forming a perfect partnership to bring a new and exciting activity for families in the Sidney area to enjoy.

The carnival will be held Saturday, September 15, 2012 from 10:00 a.m. to 3:00 p.m. at the Richland County Fairgrounds' Event Center. The groups are currently looking for community organizations to rent a booth at the carnival and host a children's game, or to provide a food booth. Booth rental will be \$20, and ticket sales will be reimbursed back to the organizations. This is a great opportunity to do a fundraiser, as well as taking part in a fun, safe and exciting community event for families!

For more information on booth rental or sponsorship of the event, contact Elaine Stedman at 480-5719 or elaine59270@yahoo.com. We are looking forward to working with you in this wonderful event for our community!

Henwood New Project Assistant at RED

Amber Henwood was hired as the Project Assistant for Richland Economic Development on August 13, 2012. Amber was born and raised in Miles City, Montana. She graduated with a secondary education degree. Amber's work experiences led her to Western Montana where she worked for Greenway Enterprises, a government contract agency, as well as the Montana After School Network, a state-wide network for after school programs.

Amber moved to the Sidney area in January 2011, mainly to complete her degree. Since she's from Miles City, and now residing in Eastern Montana again, she states that she feels it's like coming home.

Amber is excited to be working in the Richland Economic Development office, and very interested in being involved in the growth of the area.

Please feel free to call or stop by to meet Amber and welcome her.

In addition, it is with deep regret to inform our member-

ship that Michelle Kelly, our former Project Assistant, resigned her position with our office. Michelle and her husband, Jim, opened a new business venture called "Sidney Shuttle". Michelle's main focus now is the new business. Michelle has been an awesome employee, and we truly appreciate her talents. She will be greatly missed. We fully support her and Jim, and we wish them the best.



Amber Henwood

AirPacks System backpacks now in!

Clinically proven. Doctor recommended.



A properly fitted AirPacks pack enhances the body's natural ability to carry weight, reducing stress on the body up to 80% and lightening the effective load up to 50%



Yellowstone Chiropractic Clinic

(406) 433-4757
1-866-433-4757

222 2nd. Ave. SW
Sidney, MT 59270

The Right Protection You Need...
THE RIGHT PEOPLE TO INSURE IT!



Verna Baisch, CIC
Glendive
377-1014

YOUR FARM/RANCH INSURANCE EXPERTS...

Offering all lines of insurance including, farm/ranch, home, auto, crop, business & work comp.

Stockman Insurance

WWW.STOCKMANBANK.COM



HOT FOC INSURED - NOT A DEPOSIT ACCOUNT OR OTHER OBLIGATION - NOT GUARANTEED OR INSURED BY ANY DEPOSITORY INSTITUTION OR AFFILIATE. NOT INSURED BY ANY FEDERAL GOVERNMENT AGENCY, EXCEPT FOR FEDERAL FLOOD INSURANCE OR FEDERAL CROP INSURANCE. THIS AGENCY IS AN EQUAL OPPORTUNITY PROVIDER AND EMPLOYER.

FANTASY FOOTBALL **PLUS YARDAGE LEAGUE**

REGISTRATION NIGHT Friday, August 17th

Teams are available in both leagues. Teams must be claimed on Friday the 17th

DRAFT NIGHT Saturday, August 25th

FIRST DRAFT 6 pm followed by Second Draft followed by Yardage Draft



You're never a stranger at the

RANGER Lounge, Casino & Eatery

Open: Mon.-Sat. 8 a.m. - 2 a.m. • Sunday Noon-2 a.m.
110 South Central Avenue • Sidney • 482-4566

We Are Pleased to Have Purchased Jaycee Searer's Blue Ribbon Steer!



**McDonald's Sidney
Locally Owned
& Operated
406-433-1983**

A Little Bit Country Winter Wheat

**Warren Froelich
NDSU Extension Agent
Williams County**

Last year's wet conditions and high number of "prevent plant" acres spiked interest among wheat producers resulting in more winter wheat planted acres. Based on early reports this year's winter wheat yields are quite satisfactory. This is likely to serve as an encouragement to growers to plant winter wheat again this fall.

To assist growers in locating a seed source of winter wheat, the North Dakota State Seed Department recently released names of seed growers whose 2012 seed passed the initial field inspections. Besides the Williston Research Extension Center, area growers whose names appear in this statewide list include Lee and James Garaas, Grenora; Nevin Dahl and the Signalness farm, both of Watford City.

The complete list of growers can be found at our website www.ag.ndsu.edu/williamscountyextension.

Grasshoppers

Reports of high grasshopper populations are beginning to come in. Fortunately most of our small grain crops are at a maturity stage when we can expect little

damage to yields. The reports seem to indicate the grasshopper populations are limited to hot spots or localized areas.

As the small grain crops dry down and are harvested the grasshoppers will move to greener areas which need to be monitored. An economic level of adult grasshoppers is 21-40 per square yard in field margins and 8-14 per square yard in the interior of crops. The North Dakota Field Crop Insect Management Guide contains a list of registered insecticides for grasshoppers by specific crop.

Tree of the Week

This week I want to give some space and words on behalf of the European Mountain Ash. This is a small to medium-sized tree that is native to northern Europe and Asia. There are several species of Mountain Ash but the European (SorbusAucuparia) is the most widely planted.

The number of Mountain Ash is minimal when compared to green ash. Although Mountain Ash has some negatives, it can add some color to the home yard and be attractive to birds, especially after a hard fall frost.

Mountain Ash is a member of the Rose family thus

susceptible to fireblight. Sunscald of tree trunks can also be a problem. Over the years I have seen more Mountain Ash damaged by sunscald than fireblight.

Mountain Ash can grow 20-30 feet in height and have a crown width of 15 to 25 feet. It does require some additional water in most western North Dakota environments. I like this tree because of its creamy white flowers in the spring and bright orange to red color of clustered berry-like fruit in the fall. The fruit can be a bit messy which discourages some homeowners.

There are several cultivated varieties of Mountain Ash. Some have more of a columnar form while others are oval in shape.

Some of the related species include American Mountain Ash, Oakleaf Mountain Ash, and Showy Mountain Ash. The American species is alkaline pH sensitive. The Showy species is native to eastern North America and is also sensitive to alkaline pH. The Oakleaf species is a hybrid and has sufficient hardiness in North Dakota.

Building Department Reminders

As of July 9th, McKenzie County requires a building permit for any construction projects within the jurisdiction of McKenzie County.

All existing commercial and residential projects under construction prior to July 9th must also be registered with the McKenzie County Building Department by August 25, 2012. (There will be no charge for this registration). Builders may also request a Certificate of Occupancy for their ongoing projects at their option for an at cost fee.

Please contact the building department to discuss your plans with the code official before beginning construction if you are uncertain whether or not you need a permit. Any work that begins after July 9th that requires a permit will be subject to 200% permit fees and Stop Work orders until the permit requirements are met. Even if permits are not needed, the code official will answer code questions and may provide valuable advice. All work, regardless of permit requirements, must be completed in accordance with all applicable state and local codes.

The McKenzie County Building & Planning office is located in the McKenzie County Courthouse in Watford City on the second floor. The office is open from 8 a.m. to 4:30 p.m. each weekday. The office number is 701-444-3616 ext. 1045.

Comment on this story or share on Facebook at

Roundup
WEB.COM

We are pleased to have purchased Kate Reid's Market Hog & Dylan Reid's Market Hog



Dylan Reid with his Market Hog



Kate Reid with her Market Hog



Independence
BANK



www.ibyourbank.com
PO Box 188, Poplar, MT
406-768-3916



We're Proud to Support Richland County 4-H!



Taylor Searer with his Market Steer



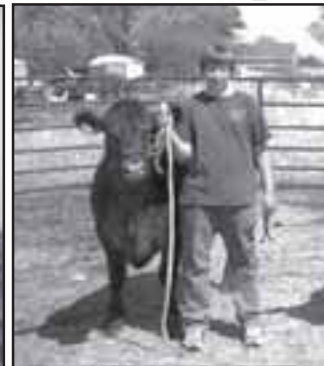
Rachel Prevost with her Market Steer



Alexis Dynneson with her Market Steer



Randy Lander with his Market Hog



Ryan Lander with his Market Steer

Exploration Drilling • Quilts & More

(406) 482-3356

Sidney, MT

(406) 482-3366

We are pleased to have purchased



Mary Voll's Market Steer



Sommer Reidle's Market Hog



Autumn Rehbein's Market Steer



William VanHook's Market Hog



Bridger Rice's Market Steer

HURLEY'S
OILFIELD SERVICES
406-742-5312 • Fairview, MT



Ft. Buford Hosts Special Weekend of Public Events

Fort Buford comes to life on Saturday, August 18, 2012, with living history and historical presentations. The Fort Buford site, located 22 miles southwest of Williston, is managed and maintained by the state's history agency, the State Historical Society of North Dakota.

Programs will be featured throughout the day. From 9 a.m. to 6 p.m., the Fort Buford Sixth Infantry Regiment Association of Williston will provide demonstrations on marching, a cannon drill, and history on the life of a frontier soldier in the late 1800s. Ann Marks of Jamestown will provide Dutch oven cooking demonstrations in the campground throughout the day. No food will be served to the public from these demonstrations.

At 3 p.m., Dale Marks of Jamestown, a member of the Twentieth Infantry, will present a program on small arms of the Civil War and the Indian Wars. Arch Ellwein will provide History Alive! Presentations portraying Vic Smith, champion buffalo hunter, at 11 a.m. and 2 p.m. on Saturday, Aug. 18 and

Sunday, Aug. 19, at 2 p.m. and 4 p.m. Ellwein is an advertising consultant and Williston-Sidney area actor and children's theater director. At the nearby Missouri-Yellowstone Confluence Interpretive Center, the Confluence Quilter will meet from 9 a.m. to 4 p.m. with a brown bag lunch.

On Sunday, Aug. 19, Bill Lowman, cowboy poet, will provide a presentation at 3 p.m. CDT at the Missouri-Yellowstone Confluence Interpretive Center. Lowman's pencil drawings are on display at the center throughout the month of August.

Fort Buford was established as a military post in 1866 to guard the trails west and serve as a major supply depot, functioning until 1895. When the fort was decommissioned in 1895, it included more than 100 buildings and structures. Today, in addition to the Field Officer's Quarters where Sitting Bull surrendered in 1881, only two other original buildings remain—the Officer-of-the-Day Building and the stone powder magazine. A nearby fort cemetery also still exists.

We are pleased to have purchased
Ali Merritt's Market Steer



The New Class of World Class AN AMERICAN REVOLUTION GMC
www.gemcitymotors.com
Gem City
MOTORS
703 S. Central, Sidney • 406-433-3120

Thank You
Dynneson Feed Lot
for purchasing my market hog!

Taylor Lange with her Market Hog

We are pleased to have purchased
Carly Candee's Red Ribbon Steer

BAGNELL (406) 480-9119 or (360) 581-9995
RV PARK SIDNEYRV.PARK.COM
Next to Pizza Hut & McDonald's • Sidney

We are pleased to have purchased
Jesse Staffanson's Market Steer

SIDNEY TAX SERVICE, INC

• DOUG LANG • CRAIG PRICE
• BILL ZIMMERMAN
115 2nd St. NE (406) 433-3131
Sidney, MT 59270 Fax (406) 433-1219

We're Proud to Support
Richland County 4-H!

Riley Lander

PARKA, Inc.
2860 W Holly St., Sidney, MT
(406) 433-4346

We are pleased to have purchased
Christian Prevost's Market Lamb

Northwest
FARM CREDIT SERVICES
406-433-3920 • 800-769-1040
www.farm-credit.com

We are please to
have purchased
Alex Young's Market Steer

Alex Young

We Are Pleased To Support 4-H by purchasing these animals at the Richland County Fair

Kyra Candee's Blue Ribbon Steer

Taylor Searer's Blue Ribbon Hog

Rachel Oliver's Grand Champion Lamb

BORDER
STEEL AND RECYCLING, INC.

Brady Smelser • Tim Mulholland • Kelly Moody • Bret Smelser • Ernie Gawryluk
Sidney Glendive Williston Plentywood
35002 CR 123 2703 W. Towne St. 13896 W. Front St. Hwy 16 East
406-433-7737 1-800-423-5219 1-800-820-5493 406-765-2624
1-855-810-2995

&
Kade Rindahl's Market Steer

Kade Rindahl

Witchell's
OIL FIELD SERVICE, INC.
ONE NATION UNDER GOD

Sidney Health Center Set to Host Another "Live it up!" Event for Local Women

Sidney Health Center will host its sixth "Live it up!" event for women on Monday, September 10 with a focus on wellness and empowerment. The program for the evening will be "Energize with Diva Dance," empowering women to find practical and fun ways to create a happier and healthier lifestyle.

Once again, the evening promises to be fun, educational and entertaining. The festivities will kick-off at the Richland County Fair Event Center with a vendor fair at 4:30 p.m. featuring various independent distributors offering goods ranging from home décor to jewelry to gourmet food prod-

ucts. A light menu including appetizers, finger foods and refreshments will be served beginning at 6:00 p.m. followed by a brief health message and an entertaining, interactive presentation by motivational guest speaker, Chris Linnares at 7:00 p.m.

International author, renowned Brazilian psychotherapist and successful Weight Loss Master Coach, Chris Linnares has quickly become a leading voice for women's wellness and empowerment. Linnares completed advanced studies in Cognitive Therapy at Harvard University and is the author of several books on women's empowerment, including the award-winning book and social project, "Beautiful Women of North Dakota." Founder of the Diva Connection Foundation and creator of the acclaimed Diva Dance, her pioneering work and inspiring life story has been featured in Marie Claire, Shape and Women's Health.

Diva Dance was created by Chris Linnares in her journey to discover a more natural way to overcome depression, grief and overweight battles after a dramatic change when she got married and left a successful career in the tropics of Brazil to move to the tundra of Fargo, North Dakota. To see a preview of what Diva Dance is all about, visit the website at www.divadanceonline.com.

To take part in this fun, educational program individuals must be 21 years of age. All "Live it up!" events are designed to empower women to live life to the fullest by encouraging

them to care for themselves and the ones they love. Tickets are available at Sidney Health Center's Caring Corner Gift Shop for \$20.00 per ticket prior to the event and \$25.00 at the door. Reserved tickets are also available for \$150 for six tickets through the Marketing and Communications Department. Call today to reserve your table at (406) 488-2101 or 488-2595.



Chris Linnares

Thank You!
1st Choice Collision Center
 for purchasing my market hog at the 4-H Livestock Sale!



Wes VanHook

Hurley's Oilfield Services
 for purchasing my market hog at the 4-H Livestock Sale!

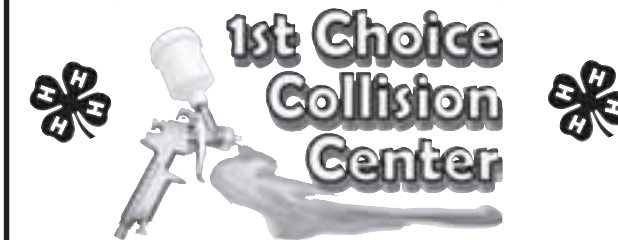


William VanHook III

We are pleased to have purchased
 Wes VanHook's Market Hog



We are pleased to have purchased
 Garrett Leland's Market Steer



406-433-2277 • 615 Cambrian Lane • Sidney, MT
 24 Hour Wrecker Service After Hours: 480-1175

Thank You!
Strauser Trucking
 for purchasing my market hog
 at the 4-H Livestock Sale!



Holly Colgan

Thank You!
Farm Equipment Sales
 for purchasing my market pig
 at the 4-H Livestock Sale!



Christopher Colgan

Thank You
 for purchasing our 4-H market animals

Randy Lander



Market Steer
 H2O Well Service



Randy Lander

Riley Lander



Market Steer
 Parka, Inc.



Riley Lander

Ryan Lander



Market Steer
 Quilts &
 More



Ryan Lander



Market Hog
 Quilts & More



Market Hog
 John Stockhill
 Jewelers



Market Hog
 Chaznline Construction

McKenzie Building Center, Inc.

Always Your Trusted Partner - Since 1934 - Watford City, ND - (701)-444-3665
 Lumber, Flooring, Appliances, Cabinets, Windows, Doors, and More!

COMMERCIAL SERVICE CENTER NOW OPEN

CONTRACTORS / COMMERCIAL CUSTOMERS / BAKKEN CONTRACTORS

ALL YOUR BUILDING NEEDS - WHOLESALE PRICES - FREE DELIVERY

STOP IN AND GET ACQUAINTED WITH NEW MANAGEMENT



RUSS ARCHER - PRESIDENT



STEVE SCHAEFFEL - MANAGING DIRECTOR
 BUSINESS DEVELOPMENT / OPERATIONS

BETTER THEN A CREDIT CARD!
 GET YOUR OWN CREDIT LINE!



0% INTEREST!
 APPLY TODAY!



SUBJECT TO CREDIT APPROVAL

MCKENZIE BUILDING CENTER BOOM TRUCK



FREE DELIVERY BY BOOM TRUCK*



PLYWOOD SALE

7/16" OSB
 ONLY \$11.95 EA

SHEETROCK SALE

5/8" 4'x12'
 ONLY \$12.95 EA

INSULATION SALE

R-11
 FROM 34¢ SQ. FT.

ALL YOUR BUILDING SUPPLY NEEDS ON SALE

LUMBER SALE

2" x 4" x 8'
 ONLY \$2.95 EA

PAINT SALE

FROM \$6.99 GAL

CINDER BLOCKS SALE

4" x 8" x 16"
 ONLY \$2.99 EA



STOCK UP AND SAVE - PICKUP OR DELIVERY

DOORS SALE

3" Pre-hung
 FROM \$89

POWER TOOLS SALE

Cordless Battery Powered
 FROM \$99

FREEZERS SALE

Whirlpool
 FROM \$239.99



ThermoTech

WOW!

SLIDING WINDOWS From \$99
 BAY WINDOWS From \$999
 PATIO DOORS From \$575

CUSTOM KITCHEN CABINET SALE



\$200 OFF
 \$2,000 PURCHASE CASH ONLY
 McKenzie Building Center, Inc. - Expires August 30th, 2012

\$1,000 OFF
 \$10,000 PURCHASE CASH ONLY
 McKenzie Building Center, Inc. - Expires August 30th, 2012

Phone: (701)-444-3665
 Fax: (701)-444-4001
 Highway 23 East
 1504 4th Ave NE
 Watford City, ND 58854



*BASED ON MINIMUM ORDER



Thanks From All of Us...



Richland County 4-Hers

Back row (L-R): Seth Indegard, Ty Handy, Jacob Rosaaen, Kelby Indegard, Wade McMillen, Jake Lunderby, Dylan Reid, Garrett Leland. **6th row (L-R):** Alexis Dynneson, Jaycee Searer, Hanna Jepsen, Clara Jepsen, Bridger Rice, Jalyssa Gorder, Cedar Lewis, Karley Leland, William VanHook, Wes VanHook, Riley Lander, Bryar Lange.

5th row (L-R): Christian Prevost, Jordan Skaley-Lange, Ryder Rice, Rachael Oliver, Jenna Baxter, Riley Kostelecky, Taryn Candee, Tucker Lien, Tanner Lien.

4th row (L-R): Tayler Lange, Mataya Coffman, Jaylen Baxter, Brielle Gorder, Rain Rehbein, Taylor Fink, Autumn Rehbein, Rachel Prevost, Taylor Schepens, Hazen Fink, Canyon Rehbein. **3rd row (L-R):** Garrett Reid, Seth Prevost, Chase Kilzer, Rita Wick, Kade Rindahl, Tyler Lien, Carley Candee, Elizabeth Hill, Clay Carpenter, Bailee Fink, Nettie Johnson. **2nd row (L-R):** Alexis Griggs, Ali Merritt, Abby Reidle, Somer Reidle, Lindsay Reid, Kallie Candee, Soda Rice, Kyle Topp, Sierra Osborne, Katherine Hill, Kolton Nevins, Trey Schepens, Kate Reid, Sam Casterline. **Front row (L-R):** Renee Granada, Ashton Handy, Brady Gorder, Dillon Lunderby, Taylor Searer, Jordan Baxter, Grace Dragseth, Anna Dragseth, Kyra Candee, CeCe Reid, Randy Lander, Myka Steinbeisser, Bonny Krogdahl, Alex Young, Jack Reid, Daryn Wolff. **Not Pictured:** John Helmuth, Jared Rosaaen, Jim Topp, Megan Demming, Becca Demming, Bladen Kindopp, Bode Demming, Gabe Granada, Dominica Granada.

To All of You!

4-H Livestock Buyers at the Richland County Fair

Exploration Drilling Inc
S&L Services
Wells Fargo
Border Steel & Recycling
Stockman Bank
H2O Well Drilling
Farm & Home Supply
Reynolds Market
Profrac Heating & Jeff Berger
Nortana Grain Co.
Keith Dynneson
Mitchells Oil Field Service
1st Choice Collision
Tri-County Implement
Quilts & More
Pacific Steel & Recycling
Franz Charolais
Town & Country Repair
Prewitt & Co.
Hi-Line Trucking
Posh Cabinetry & Design
LYREA
Melgard Construction
Hurleys Oil Field Service
Richland Federal Credit Union
Farm Credit Services
Lunderby Trucking

Parka, Inc.
J&L Fencing
Farmers Elevator-Brockton
Cenex Farmers Elevator
Bakken Oil
1st Bank
Robert Lange
Sidney Livestock Market Center
Sidney Red-E Mix
Gem City Motors
Sidney Tax Service
Petroleum Services-Pioneer Drilling
Gary & Laura Scheiber
Franz Construction
Rod & Joyce Prewitt
Oakland Construction
Sherman & Marlys Dynneson
Farm Equipment Sales-Culbertson
BXL
Hi Plains Vet Clinic
Veebaray
R&J Ag Supply
David McMillen
Land Tech
Lucky Buckle
Ebel Enterprises
MD Hose & Fittings

George Well CoPro
Betaseed
Bagnell RV
Wildcat Trucking
CTB Bearcat
Golden Eagle Trucking
Dynneson Feedlot
Ag Partners of Richey
John Stockhill Jewelers
Wildcat Trucking
McDonald's
ProFrac
Independence Bank-Poplar
Chaznline Construction
Best Western Golden Prairie Inn
Yellowstone Valley Concrete
American State Bank & Trust
Farmers Elevator-Richey
Vess Hurley
First International Bank
Bob Candee
T&S Contracting
Kringen Construction
Todd Hermanson Fencing
Prairie Electric
Sidney Rental
WellPro
Lake Family

Your Support Is Appreciated!

A special thanks to The Roundup and Ag Roundup for donating this thank you ad to assist 4-H.



Sidney Swimmers 1st Place at State Meet

The Sidney Tigershark swim team took 1st place at the Montana State Swim Meet in Columbia Falls. Go to www.roundupweb.com for more pictures. (Photos by Kathy Johnson)

Please Join Us & Celebrate
Vera Anderson's 90th Birthday!
 August 18 • 1-4pm
 Pella Lutheran Church
 Sidney, MT
 Lunch & cake will be served
 Please, no gifts.

Schwan's & March of Dimes Team Up for Fundraiser

The March of Dimes is partnering with Schwan's Fundraising for a fantastic event and opportunity for you to help!

They are excited to announce a Schwan's Truck Load Fundraiser to fund the fight against premature births and birth defects and YOU can help!

March of Dimes Montana Chapter & Schwan's Fundraiser sale takes place on August 25, 2012, in Sidney, Montana.

You can purchase your favorite Schwan's items online at www.schwansfundraising.com.

What are the perks?" Over 350 quality products to choose from-something to fit every eating occasion, flavor profile and nutritional need.

Schwan's donates 20% of total sales from the event to the March of Dimes Montana chapter.

Schwan's Gift Cards also qualify for the fundraiser! They can be ordered by visiting www.schwansfundraising.com/orderform.aspx or by calling 1-888-SCHWANS.

Simply place your order, and show up to pick it up on August 25th at Finnicum's

Furniture Lot-1051 S. Central Ave. It's that easy to help babies be born healthy and on time, every time.

For every online order (for products and gift cards) by August 22nd, your name goes into a drawing for a gift basket!

Be sure to use Campaign ID 40103 to confirm the March of Dimes gets credit for your order and you get entered for the gift basket drawing!

Thank you for helping to ensure stronger, healthier babies with the March of Dimes!

THE TAYLOR BY REDMAN HOMES **\$130,659**

28'x64' • 3 Bedroom, 2 Bath • 5/12 Pitched Roof
 Loaded with extras including designer kitchen with pantry!

Redman Homes
 YOU'RE HOME, NOW.

Hours: Mon-Thur • 9-7 ~ Fri • 9-6 ~ Sat • 9-4
 2308 W. Front St. • Williston, ND 58801
701-572-2590

Last New 2011 Ford F150 And Get Up To

\$2,000 Retail Customer Cash
\$1,000 FC Retail Bonus Customer Cash
\$1,000 Trade Assistance

OR

0% 60mo.
\$1,000 Trade Assistance

Plus
 From Eagle Country Ford Receive a **1 Year/15,000 Mile Maintenance Plan.**
 Ask sales person for details

Eagle Country Ford
 Experience the Eagle Country Difference!

Mon. - Fri. 8 a.m. - 5 p.m.
 Sat. 9 a.m. - 1 p.m.

215 East Main • Sidney, MT
 433-1810 or 1-800-482-1810

SIDNEY HEALTH CENTER
 Exceptional Care for Life

Live it up! ... a FUN Event for Women of All Ages!
 ...for Women of All Ages

MONDAY - SEPTEMBER 10
 Richland County Fair Event Center • Sidney, MT


Chris Linnares

International author, renowned Brazilian psychotherapist and successful Weight Loss Master Coach, Chris Linnares has quickly become a leading voice for women's wellness and empowerment. Diva Dance was created by Linnares in her journey to discover a more natural way to overcome depression, grief and overweight battles after a dramatic change when she got married and left a successful career in the tropics of Brazil to move to the tundra of Fargo, North Dakota.

Energize with Diva Dance

Tickets Available at Caring Corner Gift Shop
 TICKET PRICES: \$20.00 in Advance - \$25 at the Door
 Call 488-2101 for RESERVED SEATING: \$150 Table (6 tickets)

VENDOR FAIR Featuring Home Distributors 4:30 PM	SOCIAL HOUR Hors d'oeuvres & Beverages 6:00 PM	PROGRAM Guest Speaker: Chris Linnares 7:00 PM
--	---	--



On Your Way To The Fishing Hole? Need A Break? Stop In & See Us!

Pool League - Wednesdays • Poker - Mondays

Restaurant Open - Noon-9 p.m. • 7 days/week
Bar Open - Noon-2 a.m. • 7 days/week

HI-WAY LOUNGE & GRILL
701-828-3100 • Main Street • Alexander, ND



Featuring hard ice cream in a variety of flavors

In-Store Specials Every Week

Convenient Drive-up Window

LONG X BOTTLE SHOP

8 a.m.-9 p.m. Mon.-Sat.
1-5 p.m. Sun.



701-444-3335
Hwy. 85
Watford City, ND

(Located in the Long X Visitors Center)



Twist DRIVE IN

701-842-3595
Hwy. 85 W
Watford City, ND

Now Open Year-round
7 days a week 11 a.m.-9 p.m. (grill closes at 8:45 p.m.)

HOME OF THE FAMOUS TWIST BURGER!

Stop in & check out our Daily Specials!

- Shakes • Malts • Sundaes • Burgers
- Fries • Chicken • And Much More!

DINE IN • TAKE OUT

Red Solo Cup

T-Shirts Now Available!



Medium to 3x

SIDNEY LIQUOR STORE

Hours: Mon-Fri (9-6); Sat (9-5)
809 E. Main Sidney • 405-433-2862
Your only local retail liquor sales outlet

Salmon Anglers Asked to Look for Tag

Anglers who catch a tagged salmon are reminded to turn in the heads and report information to the North Dakota Game and Fish Department.

Anglers can identify a tagged salmon by looking at the adipose fin – a small fleshy lobe found on the back toward the tail. If the fin is missing it was likely removed by Game and Fish biologists and the salmon probably has a micro-tag embedded in its head. There is no external tag.

Micro-tags are inserted into a sample of young salmon before being stocked into Lake Sakakawea and the Missouri River. This microscopic tag is implanted near the snout, and contains a code that identifies stocking information.

Heads can be turned into Game and Fish, or local bait shops in Riverdale and Pick City. Anglers will be provided information about the fish when tags are extracted and read by biologists.

State Requirement for Transporting Geese Adjusted

North Dakota goose hunters should take note of an exception made to state identification requirements for transporting geese when processed by commercial processors who comply with state and federal requirements.

Robert Timian, State Game and Fish Department chief of enforcement, said hunters taking geese to commercial processors must follow the same procedure as before. The only change is commercial processors can now remove the identification component of the goose prior to reaching the hunter's legal residence.

"All federal requirements of tagging and record keeping for both the hunter and the processor remain the same," Timian said. "In addition, nothing changes for the person who takes geese home to clean."

This applies to both the early Canada goose and regular goose seasons. It does not apply for ducks. "The processors were in agreement with us to treat this as a pilot program on only geese and gauge how it works this year," Timian said. "We might expand it to other species in the future."

Processed geese are still subject to daily and possession limit regulations, and may be transported when accompanied by a copy of the record provided by the processor.

Prior to this year, one fully feathered wing or the fully feathered head of all waterfowl had to remain attached during transportation or shipment until it reached the hunter's legal residence or was processed for immediate consumption.



Jennifer Foss holds up her 33 inch Northern she caught at Rock Creek, while her husband Cory Foss holds their son Hazen to see who's bigger!



Kaila Forbes with her 41 inch Northern caught at Rock Creek.

Trenton Store Highway 1804

Open 7 Days a Week • 6:30am - 10pm

Your #1 Place Stop For

- ✓ A Quick Bite To Eat
- ✓ Use Wi-Fi
- ✓ Diesel & Gas
- ✓ Cold Beer
- ✓ General Groceries



Get Your Toys Ready For Summer!



701-774-BOAT (2628)
Hwy 2 West, Williston
former antiques shop

EXTREME MARINE
Your Marine and Motor Sport Headquarters

We Welcome Your Engagement and Wedding Announcements

We Will Publish Your Announcement, including a photo, **FREE** of Charge and in color whenever possible. Invitations will be charged for.

Send your announcements to **Box 1207, Sidney, MT**
email to info@roundupweb.com or stop by our office at 111 W. Main, Sidney

The Roundup

Make TJ's a stop on your way to and from the lake!

Full Menu

- Steaks • Hamburgers • Pizza
- Seafood • On/Off Sale Liquor • Drive-up Window • Full Bar • Big Screen TVs



Hwy. 85S
701-842-2771
Watford City, ND



IN ADDITION TO CARS, TRUCKS & FARM IMPLEMENTS

WE HAVE TIRES FOR

- Horse Trailers
- Motor Homes
- ATV's
- Garden Tractors
- Boat Trailers
- Golf Carts
- Flatbed Trailers
- Wheelbarrows
- Utility Trailers
- Tillers
- Campers
- More

If we don't have it, we can get it! We can also get rims.

Western Tire Co.

1601 SOUTH CENTRAL • SIDNEY, MONTANA
433-3858 • Open 7-5:30 M-F & 7-Noon Sat.

Enjoy the great outdoors this year!



Low Rate Secured Loans



We Finance The Fun Things In Life!



201 West Holly St. • Sidney, MT (406) 482-2704
18 East 2nd St. • Culbertson, MT (406) 787-5890

OUTDOORS



Shawn Fasching caught this 7.5 lb. walleye at Ft. Peck.



Jarod Fasching caught his first drummy at Ft. Peck.



Justice Winslow holds her first northern at Ft. Peck.

Unreal RC

The Ultimate in Remote Control Hobbies

Brushless Electric - Greater Speed and Reliability

GAS & ELECTRIC CARS, TRUCKS, PLANES, BOATS AND HELICOPTERS



701-577-1032

Located in Chaney's Total Auto

PROP SHOP

PROPELLER



SERVICE

Repair • Balance Pitch

Aluminum, Stainless Steel, Skeg Repair

Modern Machine WORKS

(701) 572-7741 • 1-800-319-7741
Williston, ND

Send us your outdoor photos!

email: info@roundupweb.com



Turn In Your Favorite Fishing Story And Get A

FREE Rod/Reel Combo

Submit your favorite fishing story and photos to The Roundup ...and, if we publish them, you will receive a free rod/reel combo.

Explore
RICHLAND COUNTY



Fish the Yellowstone River!

Watford City Softball Action



Taylor Ag Womens Softball team pictured with their 1st Place Trophy. Front Row: Kelli Taylor, Lauren Billing, Michaela Gumke, Patty Wolff, Kyla Wold, Liz Samuelson. Back Row: Lisa Samuelson, Whitney McDaniel, Courtney Taylor, Emily Peterson, Jada Helfrich, Angie Pelton and Leann Voll (Photos by Kathy Taylor)



Outlaws capture Mens City League Championship trophy. Back Row: Pat Berdahl, Wyatt Voll, Aaron Pelton, Seth Hilleren, Justin Voll and Danny Dwyer. Front Row: Stu McDaniel, Tommy Dwyer, Corey Samuelson and Jason Brew. (Photo by Leann Voll)

Taylor Ag team member, Patty Wolff, beats the throw to second base against the Cheetah Girls during the Women's City League Softball Tournament on Sunday in Watford City. The Taylor Ag Team went undefeated in the double elimination tournament to bring home the Championship trophy in a close game against S & S Motors.



Luke Taylor, LT Enterprises, brings in two RBIs on a base hit to right field during the Mens City League Softball Tournament on Sunday in Watford City. LT Enterprises defeated D & M's in two games to get into the championship game against Outlaws. Outlaws defeated LT Enterprises in the Championship game for first place in the double elimination tournament.





Roundup
Weekly Regional Newspaper Covering NE Montana & NW North Dakota
www.roundupweb.com

THE BUSINESS ROUNDUP

GOT A BUSINESS CARD? LET US HAND SOME OUT!
CALL FOR ALL THE DETAILS! 406.433.3306 OR 800.749.3306

GO TO
WWW.ROUNDUPWEB/DIRECTORY
FOR DIRECT LINKS TO
COMPANY WEBSITES
& LOCATIONS



McKenzie Building Center
Always Your Trusted Partner
McKenzieBuildingCenter.com

701.444.3665
888.842.3665
Fax: 701.444.4001
info@McKenzieBuildingCenter.com

P.O. Box 642
1504 4th Ave NE
Watford City, ND 58854

10% off Everything* in the Store!
*excluding firearms

Friday, August 17
Thru
Friday, August 24

THE TRADING POST

111 East Main • Sidney • 406.433.7676

Open: Mon-Fri • 10 am - 7 pm • Saturday • 10 am - 6

Now Taking
Appointments!



Quick Change Oil

We change SEMI and PICK-UP oil...FAST!

406-788-1914

FREE
shower for
Semi Oil Change

Customer Service is Our #1 Priority



BORDER STEEL AND RECYCLING, INC.

Farm & Ranch Products & Construction Materials. New Steel, Aluminum & Stainless.

Brady Smelser • Tim Mulholland • Kelly Moody • Bret Smelser • Ernie Gawryluk

Sidney 35002 CR 123 406-433-7737 1-855-810-2995	Glendive 2703 W. Towne St. 1-800-423-5219	Williston 13896 W. Front St. 1-800-820-5493	Plentywood Hwy 16 East 406-765-2624
--	---	---	---

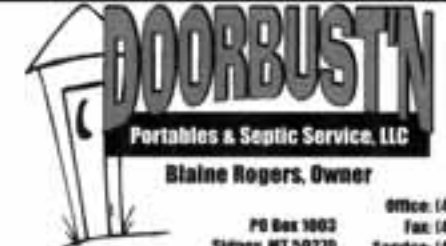


AGRI INDUSTRIES
Water Professionals
Underground Contractors

Ken Tyler
Utility Foreman
email: ktyler.agri@gmail.com

1-877-488-8066
Office: 406-488-8066
Fax: 406-488-8067

1775 S. Central Ave.
Sidney, MT 59270
www.agriindustries.com



DOORBUSTN
Portables & Septic Service, LLC

Blaine Rogers, Owner

PO Box 1803
Sidney, MT 59270
www.doorbustnportablesseptic.com

Office: (406) 433-7588
Fax: (406) 433-7588
Service: (406) 488-8975



MD HOSE & FITTING

Hours: 7 a.m. - 5 p.m. Mon. - Fri.
205 10th Ave. S. E. Sidney • Sidney Red-E-Mix West Building
P: (406) 433-1590 • After Hours: (406) 478-3116
mdhose@midrivers.com




DIXON
The Right Connection!

Sidney Chiropractic & Diet Center

In The Yellowstone Marketplace • Corner of Main & Central, Downtown Sidney

Dale Speiser, D.C. \$50⁰⁰ 1st Visit
Palmer Graduate

Call 406-973-9730 for your appointment



NICK JONES REAL ESTATE REALTOR®

TRUCK ROUTE SOUTH, SIDNEY
OR CONTACT ONE OF OUR AGENTS:

NICHOLAS J. JONES, DENNIS WICK, JUSTIN JONES, JERRIAN FRANKEN, KRISTIN LARSON
BROKER 406-480-1544 406-480-1350 406-480-9515 406-478-3773 406-480-5138
406-480-1544

www.NickJonesRE.com





S/L SERVICE, INC.
Oil Field & Industrial Construction

2265 S. Central Ave.
Sidney, MT 59270
Email: sls@slservice.net
Phone: 406.433.6754
Fax: 406.433.6755

www.slserviceinc.com



Beagle PROPERTIES INC.

View all our listings at
www.beagleproperties.com



SONDA'S solutions

Specializing in FR Clothing

OFFICE: 406-433-6757 • CELL: 406-697-7153
2221 S. CENTRAL AVENUE • SIDNEY, MT 59270
FAX: 406-433-6755 • WEBSITE:
WWW.SONDASOLUTIONS.COM

YOUR COMPANY
HERE



Roundup WEB.COM

NOW OPEN!!

Need a Private Mail Box?

Stop in for your private mail box rental or on line at
www.themailmasters.com.

We offer small, medium & large sizes. We also offer parcel package drop to receive packages.

B&J Distributors

Bryan Johnson 605-645-3283 "Supplying your clothing needs"
701-842-6441 • 204 N Main • Watford City, ND

PLUS!
FR Clothing
Now Available

Jim Bacon 605-641-2116

McKenzie Building Center Creates New Contractor and Commercial Customer Service Center Serving The Bakken

Free Delivery With Their New Boom Truck

McKenzie Building Center, Inc., of Watford City, ND, has created a brand new contractor and commercial customer service center to serve the Bakken area of North Dakota as well as Montana, as a full service material and supply service center.

"We have created a special commercial customer service center to specifically target and serve commercial clients, builders, developers and oil field contractors with their building supply needs. We have also opened up the new electrical and plumbing department with a large inventory of needed products," said Steve Schaeffel, Managing Director of Business Development/Operations.

Steve has over 30 years experience in the lumber/building industry, and is a



Boom Truck



Paint Department

Marine veteran. The Building Center has also added Bryan Stanford to their professional staff, another Marine veteran, as the new lumber yard foreman/manager, and he has greatly improved yard operations to better serve the multitude of commercial customers as well as do-it-yourselfers.

They are also offering free delivery to commercial accounts using their new boom delivery truck. The truck can offload up to 26,000 pounds of building materials with its crane arm and also deliver materials such as roofing shingles or sheetrock, right up to upper floors, and deliveries are possible anywhere in the area, even on short notice.

With the start of this new service center, deliveries are now more timely and accurate, and with the boom truck a lot easier to offload on job sites.

McKenzie Building Center has been a fixture in Watford City since 1934, and is taking great pride in offering an extensive inventory of everything necessary to build a home, such as lumber of every type, millwork, plywood, treated wood, cedar wood products, flooring, windows, metal roofing, roofing materials, and farm and ranch specialties of every type including appliances, floor coverings, carpeting and paint.

In addition to the above, the contractors and commercial clients can establish their own credit lines for materials purchases as needed to allow for greater ability to buy all materials at one location, especially now with the addition of the electrical and plumbing department to round out completely the entire home building and repair needs.

Additionally, the company announced the promotion to President of the company, Russ Archer, an experienced lumber and building industry veteran who has started to revamp



Russ Archer - President



Steve Schaeffel - Managing Director Business Development / Operations

and modernize operations to better serve the area as its major building materials supplier.

"We have added staff, we have added products and we have significantly improved our delivery capabilities with the new boom-crane truck," said Mr. Archer. "We look forward to expanding our contractor business significantly due to our expanded inventory and service capabilities," added Mr. Archer.

"McKenzie Building Center is also in the process of setting up for the Bakken contractors, oil companies and commercial accounts, a new credit purchase program that will provide these customers with specific credit lines for materials purchases of up to \$1 million, depending on their credit profile, and that should be set up shortly to add significantly to a customer's ability to buy merchandise from us on credit," added Mr. Archer.

WMA Camping Restrictions Spread to Southwest ND

Some wildlife management areas in southwestern North Dakota now have the same camping restrictions adopted earlier this spring on similar public lands along Lake Sakakawea.

The State Game and Fish Department has now included the following WMAs where overnight camping is prohibited on Tuesdays and Wednesdays, except holidays: North Lemmon Lake in Adams County; Bull Creek in Billings County; Alkali Creek and Spring Creek in Bowman County; Killdeer Mountains in Dunn County; Camels Hump Lake in Golden Valley County; Indian Creek in Hettinger County; Storm Creek in Morton County; and Cedar Lake and Speck Davis Pond in Slope County.

In April, the Game and Fish Department applied the same restrictions on the following WMAs along Lake Sakakawea: Audubon, Custer Mine, Deepwater Creek, deTrobriand, Douglas Creek and Wolf Creek in McLean County; and Beaver Creek and Hille in Mercer County.

In addition, camping is not allowed at all, including holidays, at the following WMAs: Antelope Creek, Big Oxbow, Lewis and Clark, Neu's Point, Ochs Point, Overlook, Sullivan and Tobacco Garden in McKenzie County; Van Hook in Mountrail County; and Hofflund and Trenton in Williams County.

Camping restrictions at all WMAs are posted at entry points.

Dan Goss invites you to another Evening Auction

SIDNEY REAL ESTATE AND PERSONAL PROPERTY

THURSDAY, AUGUST 23, 2012 AT 6:00 P.M.

Property Address: 2802 3rd Street NW, Sidney, Montana - Sale Location: ON THE PROPERTY

Directions: From the farthest north traffic light in Sidney take West Holly Street to 3rd Street (Approximately 2 blocks past Miller's Corner Convenience Store) take a left onto 3rd Street and continue on to the property. Watch for auction signs.

REAL ESTATE OFFERED AT 7:00 PM

REAL ESTATE TERMS: Cash. The high and accepted bidder will be required to close on or within 10 days of the date of the sale. If the bidder fails to close, 10% of the down payment will be forfeited. If the bidder fails to close, the seller will be able to file a claim against the bidder's earnest money. All information is for informational purposes only and is not guaranteed by the seller. The seller disclaims all responsibility for any omissions or errors. The seller disclaims all responsibility for any omissions or errors. The seller disclaims all responsibility for any omissions or errors.

LAND AUCTIONS, INC. 304 MT HWY 200 W - Circle 11, 59215 - www.montanalandauctions.com

PERSONAL PROPERTY AUCTION - STARTS AT 6:00 P.M.

- FARM EQUIPMENT**
 - 1985 John Deere 4WD tractor with loader
 - 1985 John Deere 2 row crop planter
 - 1985 John Deere 3 row corn planter
 - 1985 John Deere 12' row mower conditioner
 - 1985 John Deere 12' row mower conditioner
- FURNITURE & APPLIANCES**
 - 2005 Kenmore upright freezer
 - 2005 Kenmore refrigerator
 - 2005 Kenmore electric range
 - 2005 Kenmore electric oven
 - 2005 Kenmore electric stove
- SHOP SUPPLIES & TOOLS**
 - 1985 John Deere 12' row mower conditioner
 - 1985 John Deere 12' row mower conditioner
 - 1985 John Deere 12' row mower conditioner
- MISC. HOUSEHOLD**
 - 1985 John Deere 12' row mower conditioner
 - 1985 John Deere 12' row mower conditioner
 - 1985 John Deere 12' row mower conditioner
- QUILTING & CRAFT SUPPLIES**
 - 1985 John Deere 12' row mower conditioner
 - 1985 John Deere 12' row mower conditioner
 - 1985 John Deere 12' row mower conditioner
- CONSIGNMENTS**
 - 1985 John Deere 12' row mower conditioner
 - 1985 John Deere 12' row mower conditioner
 - 1985 John Deere 12' row mower conditioner
- AND MANY, MANY ITEMS TOO NUMEROUS TO MENTION!**

Montana Auction Company, Inc. 304 MT Hwy 200 W - Circle 11, Sidney, MT 59215

For photos & more information go to www.montanalandauctions.com

Small text at the bottom of the page, likely a disclaimer or additional contact information.

HELP WANTED

ADMINISTRATIVE ASSISTANT WANTED

The Roundup is looking for a full time Administrative Assistant to work Monday 8-5, Tuesday - Friday 9-5. MUST have computer skills to include: Microsoft Word, Internet and 10 key skills. Duties include answering phones, perform light cleaning and other duties as assigned. Wage negotiable DOE. Apply at Sidney Job Service.

COOKS & DISHWASHERS

Wage DOE. Apply in person at Cattle-Ac, 119 N. Central Ave., Sidney, MT.

CARRIERS WANTED

Need extra cash or want to get some exercise? We have carrier routes available in most parts of Sidney. Call 406-433-3306, or fill out application at The Roundup, 111 W. Main, Sidney.

DELIVERY/SHOP

Central Water is looking for a full-time Office Administrator. Wage DOE. Please inquire at Central Water Conditioning, 1521 S. Central Ave., Sidney, MT for application, or call 406-433-3735.

CLINIC POSITIONS

Clinic LPN/RN: Requires Mon-Fri, 8am-5pm. Full-time

position at RMC for split responsibilities: part-time **Social Services Director**, part-time **Quality Assurance Coordinator**. **CNA:** Full-time or part-time, days or nights. Starting wage at \$10.30. Benefits include health insurance, life insurance, extended illness bank, 401K and paid vacation. RMC is an equal opportunity employer. Contact Shawna Durocher at 406-787-6401.

LIBRARY DIRECTOR

Due to the upcoming retirement of our current director, the Sidney-Richland County Public Library Board of Trustees is accepting applications for the position of Library Director. The trustees seek a dynamic, visionary, innovative and experienced leader who will continue to develop and strengthen public library services in our community for our 21st Century patrons. For a more complete job de-

scription, qualifications and how to apply, go to: www.richland.org/spl or the Sidney Job Service.

WRITERS WANTED

The Roundup is looking for full- or part-time writers/editors/reporters. Salary DOE. Apply at Sidney Job Service.

HELP WANTED

Panini's Pizzeria is now hiring cooks and waitresses for their new restaurant in Yellowstone Marketplace. Contact 541-510-5348 or stop by and pick up an application.

DRIVER WANTED

Delivery driver for The Roundup. Must have valid driver's license, be able to lift at least 80 lbs. One day/week, sometimes two. Competitive pay. Pick up application at 111 West Main, Sidney, MT, or at the Sidney Job Service.

ADMIN ASSISTANT

Administrative Assistant wanted at Transystems. Position will require flexibility, computer skills and great customer service. Data entry, employee paperwork and manager support are just a few of the many tasks that are done daily. Excellent opportunity to start a new career. Will train. Wage DOE. Email your resume to: kari.franks@transystemsllc.com.

CLASS A DRIVERS

Transystems is now hiring Class A drivers to haul sugar beets in Sidney, MT. We have full-time and part-time positions available. Housing is available. Year-round opportunities if so desired. Apply online @ transystemsllc.com or call 406-433-5522.

EMPLOYMENT OPPORTUNITIES!

The South 40 Restaurant is seeking Experienced **Line Cooks, Servers, Bussers and Hosts.** Full or Part Time.

The South 40 Lounge and Winner's Pub are seeking **Full Time Bartenders.** Most Positions are day time, but Flexibility in scheduling is desirable.

All Positions are eligible for Vacation Pay. Full Time Positions are eligible for paid Health & Life insurance. Full Time Kitchen Positions are eligible for monthly Bonus Plan.

Apply for all positions with Ray or Kelly at the South 40, 207 2nd Ave. NW, Sidney. 406-433-4354

HELP WANTED

Full-time Elevator Operator. Full benefits, paid vacation, 401K with Company match. Must have basic computer skills, ability to work well with others, and a good work ethic and attitude. Some travel required. Wage DOE. Contact Les at Gavilon Grain, Fairview, MT. 406-747-5236. An EOE.

ACCOUNTANT/IT

Lower Yellowstone Rural Electric Association in Sidney, MT is seeking an Accountant/IT Specialist. Applicants must have an accounting degree. The successful candidate must have a thorough working knowledge of computer systems. Must have the ability to handle a variety of diverse tasks and organize work to meet deadlines. Must have proficient communication skills-both written and oral-commensurate with this position. Must be a problem solver, organized and future-oriented. Salary will be based on experience. Position open until filled. contact Lower Yellowstone Electric's office for an application: 406-488-1602. Mail application along with a resume to LYREA, PO Box 1047, Sidney, MT 59270.

HELP WANTED

Do you need a position where you get back more than you receive? Where you are told you look nice even on your worst days. ROI has full-time and part-time positions available for direct care professionals. Training is provided. FT includes health insurance, IRA, bonus, and personal time off with wage starting at \$9.85. PT includes IRA and

At Sidney Health Center, we promote a Work-Life Balance...

Sidney Health Center's most valuable resource is the **people** who serve our patients, residents and guests.

Join our team!

EMPLOYMENT OPPORTUNITIES

- Food Services
 - Cashier
 - Cook
 - Dietary Aide
- Information Systems Help Desk Tech
- The Lodge
 - Environmental Services/Resident Assistant
- Nursing Services
 - Acute Care RN
 - Emergency Room RN
 - Extended Care Night Nurses LPN/RN
 - Perioperative RN
- Duramed
 - Retail Services Technician

9 Out of 10 Employees Agree:
"I don't have to choose between my job and family!"

TOP 100

SIDNEY HEALTH CENTER
Exceptional Care for Life

For additional information or to apply online, please visit our website or contact:
Marilyn Olson - Phone: (406) 488-2571
mjolson@sidneyhealth.org
216 14th Ave SW - Sidney, MT

Visit Our Website at: www.sidneyhealth.org

Administrative Assistant Position Open

The Roundup is looking for a full time Administrative Assistant to work Monday 8-5, Tuesday - Friday 9-5. MUST have computer skills to include: Microsoft Word, Internet and 10 key skills. Duties include answering phones, perform light cleaning and other duties as assigned. Wage negotiable DOE. Apply at Sidney Job Service

Are you an exceptional individual who is ready for success and the opportunity to grow your career in hospitality? **Then we want to get to know you!**

The ALL NEW Microtel Inn & Suites is in search of new and future hospitality professionals who are prepared to provide industry-leading levels of customer service and award-winning overall guest experiences.

No experience? NO PROBLEM! We will train and equip you with the skills and tools you need to succeed.

- Access to top-tier operational support
- Exciting career advancement opportunities
- Competitive wages and benefits.

Full & Part-Time positions available...

- ...Part Time Breakfast Attendants
- ...Housekeeping

You can check out our other hotels at www.microtel.com and www.oasismgmt.com, and also email info@microtelsidney.com to submit your resume or request an application. Resumes and applications can also be faxed to 303.325.1010.

DRIVER WANTED

Delivery driver for The Roundup. Must have valid driver's license, be able to lift at least 80 lbs. One day/week, sometimes two. Competitive pay. Pick up application at 111 West Main, Sidney, MT, or at the Sidney Job Service.

Help Wanted

- **\$13.80/hour**
- **Bid jobs up to \$15.22/hour**
- **Opportunity for advancement to full time positions**
- **On the job training**
- **Overtime may be available**
- **Employee Referral Program**

Apply in person or request an application from:
Sidney Sugars Incorporated
35140 County Road 125 - Sidney, MT - 406-433-9320
Apply at Job Service Work Force Center
211 N Central Ave - Sidney, MT
www.sidneysugars.com

Sidney Sugars
INCORPORATED
Walk-ins are welcome!
Equal Opportunity Employer • Drug Free Workplace

Help Wanted

Sidney Sugars Incorporated has the following positions open:

- **Maintenance Electrician:** \$21.21 hour starting; \$25.18 and full time with proven competence
- **Electrical Instrumentation:** \$21.21 hour starting, \$25.18 and full time with proven competence
- **House Mechanic:** \$21.21 hour starting, \$24.32 and full time with proven competence
- **Instrument Person:** \$20.95 hour starting, \$25.18 and full time with proven competence
- **Boiler Operator:** Class 1 or 2 license \$25.18. Class 3 \$20.95 hr with willingness to learn.

Full time benefits are:

- Holiday, Vacation and sick pay
- Insurance for medical, dental and life
- Pension and 401 (k)

Apply in person or request an application from:
Sidney Sugars Incorporated,
35140 County Road 125, Sidney MT 59270
Email: ttaynor@crystalsugar.com
Phone: 406-433-9320 Fax: 406-433-9317

Sidney Sugars
INCORPORATED
Walk-ins are welcome!
Equal Opportunity Employer • Drug Free Workplace

bonus with wage starting at \$9.35. Variety of hours and shifts open. Call Tami 406-488-3341, or apply @ 1100 Silurian Lane, Sidney, MT.

GENERAL MAINT/LUBE

Action auto is looking for a full-time General maintenance/Lube tech with a positive attitude and good work ethics. Must have a mechanical aptitude and the ability to diagnose auto/tire service-type work and perform basic maintenance functions and basic brake services. Action Auto offers competitive compensation, paid vacation, sick leave, holidays, 401K, Profit Sharing, Health insurance with advancement opportunities in a team-oriented, high-volume work environment. Applicants must be 18 or older with a valid driver's license and insurable driving record. Call 406-433-2312 or send your resume with references to Action Auto, Attn: Service Dept. 220 E Main, Sidney, MT 59270.

REAL ESTATE

FOR SALE

Two bedroom, 1 bath home in Sidney, MT. Newly remodeled, new siding and roof. Detached garage. \$185,000. 406-488-7021.

FOR SALE

If you're looking for a home with lots of potential, take a look at this 2300 sq. ft. home, conveniently located in downtown Watford City. 2 lg. bedrooms, but more could be added in the unfinished basement. It needs some work, but priced right at

\$129,900.00. Call Karla @ 701-290-3560 for more info.

FOR SALE BY OWNER

ENORMOUS PRICE REDUCTION. Single family home or duplex. Well built. Newer furnace/AC. Move in ready. Sidney, MT. 406-489-1807 or 812-345-1557.

FOR SALE BY OWNER

Great Income Potential. 3 bedroom on the main level with an apartment in the basement. In a good, quiet location near hospital and school. Fenced backyard. Sidney, MT. Call 406-488-6338 to schedule an appointment for showing.

FOR SALE

For Sale in Richey, MT. Old grocery store on Main Street. I believe it can be fixed up for use, but will require serious effort. Asking \$5000. If interested, call Paul 701-570-0735.

LAND FOR SALE

Commercial and residential land available, two miles north of Arnegard, ND. Excellent location for travel to Watford City and Williston. Call 701-842-2168 or 701-570-8108.

FOR SALE

Two houses on two acres in Medicine Lake, MT. 5 bed, 2 bath, vaulted ceilings in both living rooms, bedrooms overlook living room, fireplace, solid oak throughout, completely remodeled and new in 2007, garages, shed, mature landscaping with large yard. Smaller house is 2 bedroom, 1 bath with recent up-

dates. Houses being sold together. Call 406-480-3044.

WATFORD CITY

Right south of Watford City, private setting. Wow! Spacious rural home with about 3/4 acre lot filled with trees. 3625 sq. ft., four very nice-sized bedrooms, two full baths. Patio leads off to a two-tier deck with hot tub that stays with the home. 28x40 extra garage on the property plus a 24x24 garage attached to the home. Upper level great room newly completed. Call Phyllis 701-290-6061. LaDuke & Assoc. R.E. PC/FI.

FOR SALE

Bakken Area, 3 bedroom, 2 bath home with 18x20 detached garage. \$199,000 OBO. Washer,

dryer, stove, fridge, microwave, extra heat basement pellet stove. Exterior maintenance-free. Serious inquiries only. Culbertson, MT. 406-690-7025.

FOR RENT

FURNISHED RENTALS
Glendive. Nightly or weekly, Cable TV, WiFi, weekly cleaning. RV spaces/ full hookups. Riverview & Whispering Trees Suites & RV. glendivemotelrental.com or call 406-253-0451 or 406-939-1720.

GLENDIVE AREA

4600 sq. ft. home, 8 bedroom, 3 bath, 1 level. Lots of parking. Meals & cleaning available if needed. For lease

to a company or group of individuals. Also **3+bedroom**, 2 bath, large newly remodeled basement. No smoking, no pets. Minimum 1 year lease. Call for an appointment to view. 406-377-5918.

FOR RENT

Camper spot for rent, all hookups. \$700/month. 406-776-2209. Leave message.

FOR RENT

One bedroom apartment in Sidney, MT. Fully furnished. \$900/month plus \$500 deposit. 406-488-7431 or 406-489-7431.

SERVICES

HOT SHOTTRUCKING

Haul Lass, LLC is now servicing the area. Delivering anywhere, anytime! Reliable, responsible & local! Give me a call at 406-480-0126 or 406-488-6613, email hoffhd@hotmail.com or fax 406-488-6107. Dianna Hoff, Hauler.

Xango Mangosteen Juice
The Carpenter's Storehaus
Your Local Bible Book Store
Sidney, MT
406-433-3355

ROUNDUP TRADER



2000 Winnebago Adventure 36'
Class A, M-37G, Ford V10/Banks, 16' slide, sleeps 6, microwave, flat screen tv, heat pump, 5kw gen, lots of storage.
\$35,500 obo
406-488-1833

ROUNDUP TRADER



2007 Chevrolet Suburban LT 4x4
115,000 miles (mostly HWY miles), Leather, DVD, Sunroof, Excellent Shape!
\$24,000 OBO
Call: 701-842-2477

Wheel Deals Arnegard Auto Sales

2008 Chevy Malibu	\$14,995
2001 Chrysler Sebring 4 door Sedan	\$4,500
1999 Dodge 1/2 ton 4x4, ext. cab	\$6,500
1984 24' Fifth Wheel Camper	\$3,495
2005 Chevy Crew Cab	\$15,995
2007 GMC Denali	\$29,995
1969 Olds Cutlass 2 door	\$9,995
2008 1 ton Dually Duramax	\$24,595
2005 Yukon XL Denali	\$15,995

701-586-3552 • Hwy. 85W • Arnegard, ND

Blue Water Drug Collections
Breath Alcohol Testing
Urine & Hair Test Collection
Mobile service or by appointment at
Yellowstone Chiropractic Clinic
222 2nd Ave SW • Sidney
406-489-1105 • Beth - 406-480-1183 • Marilyn
406-488-1153 • After Hours
bluewaterdrugcollections@gmail.com

The WATFORD HOTEL ***

JOB FAIR

Friday, August 17
10 a.m. to 6 p.m.
Watford City Motel
810 3rd Ave. SW
Watford City, ND

Hiring for the following positions:
Housekeeping • Front Desk
Bartender

Accepting applications & conducting interviews.

USDA Program Technician Vacancy FSA

Do you have office skills and/or a farm background? Are you looking for an exciting career? Consider working for the United States Department of Agriculture! The McKenzie County Farm Service Agency, Watford City, ND, is presently accepting applications for a Permanent Program Technician position. The application period will run from August 13, 2012 to August 27, 2012. Interested candidates must submit an application online at www.usajobs.gov. The application process is quick and easy. Just be sure to include all required information!

In addition to a fulfilling career, the selectee will be eligible for health and life insurance, annual (vacation) and sick leave, federal holidays, health care flexible spending and will be covered by a federal retirement system.

For more information, call Marcy at (701) 842-3628. The Federal Government is an Equal Opportunity Employer.

OPEN HOUSE



FANTASTIC AREA-NEAR PARK & MIDDLE SCHOOL
SUNDAY, AUGUST 19, 2012, FROM 2:00-4:00 P.M.
HOUSE LOCATION: 513 3RD AVE SW, SIDNEY, MT (WEST SIDE OF VETERANS MEMORIAL PARK)

HOUSE DESCRIPTION: 3370 sq ft Lot w/976 sq ft home & 840 sq ft basement, (2) bedroom, full bath & 1/2 bath, natural gas forced air heat, central air, 28x28 double car heated

RK Rick Knlepkamp
Statewide Auction (406) 485-2348
WE SELL & ADVERTISE ACROSS THE UNITED STATES
www.r-k-auction.com
Rick Knlepkamp (406) 485-2348 or call (406) 839-1832

OPEN HOUSE



1/4 MILE OFF THE HWY YET QUIET & TUCKED AWAY WITH GREAT VIEWS

SUNDAY, AUGUST 19, 2012 FROM 2:00-4:00 P.M.
HOUSE LOCATION: From Glendive, MT - Take Hwy 16N toward Sidney for 8.5 miles. Property starts on the right side of the road. Roads will be marked.

Built in 1994, 1568 sq ft house w/3 bedrooms, 2-baths, double car attached garage, 360 sq ft enclosed porch, central air, forced air gas heat, (stove, refrigerator, washer/dryer stay with the house), 25x31 shop/garage which has septic & electricity & has a mobile home hook-up close to the building

RK Rick Knlepkamp
Statewide Auction (406) 485-2348
WE SELL & ADVERTISE ACROSS THE UNITED STATES
www.r-k-auction.com
Rick Knlepkamp (406) 485-2348 or call (406) 839-1832

Save Time & Money with Great Communication!

Mobile Radios
• 25 to 110 watts
• 8 to 128 channels
• small, easy to use
Starting at \$359.00



Hand Helds
TK-2302
Hand Held
5 Watts w/ Scan



Nice selection of portables!
We can find a place to make it fit!
Call Larry today at...

ADVANCED COMMUNICATIONS
Just North of McDonald's • Sidney, MT
406-433-1659 or Toll Free 1-866-433-1659

REDUCED



LOTS OF POSSIBILITIES: Nicely maintained 8.283 irrigated acres, minutes from Sidney. Steel sided 40x56 shop, 30x48 pole barn with 10x48 attached overhang, 3 bdrm., 1 3/4 bath home with another 14x 48 manufactured building that could be used as an office or living quarters. \$399,900. www.missouririverrealty.com or call 406-433-3010.



WELDING

Welding and repair work. No job is too small. Portable welder, reasonable rates. 701-444-2936.

COMPLETE SERVICE CENTER

The Roundup provides free Fax service at Meuchel Computer Services, Watford City, ND, for all news, photos & advertising copy. **You may drop your Roundup payments at Meuchels.**

WINDSHIELD REPLACEMENTS

Lowest price around. Quick service. Over 300 windshields in stock for cars, pickups & semis. Magrum Motors, 1820 2nd St. W., Williston. 701-572-0114.

PAINTING

Will paint houses, barns, quonsets, silos, grain bins, etc. References available. R&L Painting, 406-488-8244.

MONUMENTS

Azure & Son Monuments: Grave covers, markers, all colors & sizes, custom designs, scenes, final dates, pictures. We sell monuments, no extra charge for lettering. Box 2, Froid, MT 59226, 406-766-2326 or 406-839-0910 (cell).

FARM & RANCH MINERALS & SUPPLEMENTS

Complete line of minerals & supplements. Protein & mineral tabs for cattle, horses & sheep. All types of liquid feed for livestock. Calving supplies. R&J Ag Supply 406-488-1953, 406-480-2006, 1-800-233-2499, Sidney, MT.

VERMEER HAYING EQUIPMENT

See us today for all your haying & feeding equipment, sweeps & farm oil. Anderson Vermeer Sales & Service. Open Mon.-Fri., 8 a.m.-5:30 p.m. 701-828-3358 or 701-828-3482 (after hrs.). Alexander, ND.

FOR SALE

Hesston 6450 self-propelled 14ft mower/conditioner. Field-ready. 701-694-3620.

SADDLES

Trail riding, roping, barrel racing, ranch work. Circle Y, Cactus, Colorado Saddlery. We have lots of saddles. Trade-ins welcome. Williston Saddlery, Hwy 2 West, 701-572-2267.

ROUGH LUMBER, POSTS

We stock rough lumber, wood posts, and rails. Williston Saddlery, Hwy 2 West, 701-572-2267.

FEEDING DEER?

We sell Purina "Quick Draw" Deer Blocks; deer love them. Williston Saddlery, Hwy 2 West, 701-572-2267.

FOR SALE

1270 Case tractor, 7500 hours. \$9,000. 406-776-2209. Leave message.

FOR SALE

1999 WIC Sugarbeet defoliator. Will do 8 or 9 rows, rear steer, in good shape. 406-489-0152.

VEHICLES

FOR SALE

Nice 1999 Ford 550 7.3 diesel. Eleven ft. box, crane, fuel tank, air compressor. \$15,000. 406-776-2209. Leave message.

FOR SALE

Two Fire-Red GMC pickups: 2005 SLE Extended-cab, 36,500 miles. \$19,000. 2011 Regular cab Work Truck, 6,700 miles, \$21,000. Both garaged and pampered. 406-482-8057.

FOR SALE

2008 F450 King Ranch, 35,000 miles, Air-ride, 5th wheel gooseneck hitch. Sunroof, CB, V-top, 5th wheel tool box. Excellent condition. Non-smoker. Will deliver. \$42,500. Dave 303-775-8023.

FOR SALE

2006 LTZ Suburban, 55,000 miles, \$24,000. 2006 Ford 4-door diesel pickup, 44,000 miles, \$28,000. 2007 Suzuki 4-wheeler, street legal, \$2,800. 406-482-3356.

RECREATIONAL VEHICLES

FOR SALE

Gas golf cart, \$1350. 406-489-7431.

FOR SALE

40ft. NuWa 4-Season 5th Wheel: New Furnace, New

Tires, New Awning, Generator Ready, Living Room Slide-Out, King Size Bed, Dining Room Table, Tons of Storage, Set Up in an RV Park in Sidney, MT. Available September 1st. \$8900 (720) 233-6029.

BEFORE THE DEPARTMENT OF REVENUE OF THE STATE OF MONTANA LIQUOR LICENSING

NOTICE OF APPLICATION FOR ISSUANCE OF ONE ORIGINAL (NEW) MONTANA ALL-ALCOHOLIC BEVERAGES LICENSE

On July 23, 2012, Colby John, Inc. - Sole Shareholder: Colby Hernandez, filed an application for the issuance of a license to be used at COLBY'S CASINO AND CARD ROOM, 4 US Highway 2, Bainville, Roosevelt County, Montana.

Protests against an application must be (1) made in writing, (2) mailed to the Department of Revenue, Liquor Licensing, PO Box 1712, Helena, Montana 59624-1712, and (3) received and date stamped by the Department no later than the 17th day of September, 2012. Protests will be accepted from residents of the county from which the application originates, residents of adjoining counties, or residents of adjoining counties in another state if the criteria in subsection 16-4-207 (4)(d), MCA, are met.

Each protestor is required to mail a separate letter of protest that contains in legible print, the protestor's full name, mailing address, and street address. Each letter must be signed by the protestor. Protest petitions bearing the names and signatures of more than one protestor will not be considered. Protest letters must provide the trade name, or applicant name associated with the license being protested for identification purposes. Protest letters must contain a clear statement of the writer's intent to protest the application. The grounds for protest of an application for a new license are limited to those set out in section 16-4-405, MCA for denial of a license, and public convenience and necessity as set forth in section 16-4-203, MCA.

Protest letters which do not provide the information described in this paragraph will not be considered valid protest letters. Only those grounds for protest raised in valid protest letters will be considered at hearing. An individual's testimony at hearing will be limited to the grounds for protest raised in that individual's valid protest letter. If the department receives a sufficient number of protests to require a hearing pursuant to section 16-4-207(4)(a), MCA, a hearing will be scheduled in Helena, Montana. If the department receives a sufficient number of protests to require a hearing pursuant to section 16-4-207(4)(b), MCA, to determine public convenience and necessity, a hearing will be held in the county in which the proposed premises is located. All qualified protestors will be notified of the time, date, and location of the hearing. Hearings are typically scheduled within 90 days following the protest deadline.

If a sufficient number of protests to require a hearing are not received and all licensing criteria have been satisfied, the department may issue the license without holding a hearing.

DATED: August 7, 2012
BY: Jessica Burbank
Compliance Specialist

BEFORE THE DEPARTMENT OF REVENUE OF THE STATE OF MONTANA LIQUOR LICENSING

NOTICE OF APPLICATION FOR TRANSFER OF OWNERSHIP AND LOCATION FOR MONTANA ALL-ALCOHOLIC BEVERAGES "FLOATER" LICENSE NO. 27-221-6606-001

On May 30, 2012, Mighty Mouse, Inc. - Sole Shareholder: Jack D. Vaira, filed an application for the transfer of a license to be used at GOLD RUSH CASINO & LIQUOR STORE, 504 South Ellery Avenue, Fairview, Richland County, Montana. This license was previously held at Jackrabbit Red's Casino, 12200 West Browns Gulch Road, Butte, Silver Bow County, Montana.

Protests against an application must be (1) made in writing, (2) mailed to the Department of Revenue, Liquor Licensing, PO Box 1712, Helena, Montana 59624-1712, and (3) received and date stamped by the Department no later than the 3rd day of September, 2012. Protests will be accepted from residents of the county from which the application originates, residents of adjoining Montana counties, or residents of adjoining counties in another state if the criteria in subsection (4)(d) are met.

Each protestor is required to mail a separate letter of protest that contains in legible print, the protestor's full name, mailing address, and street address. Each letter must be signed by the protestor. Protest petitions bearing the names and signatures of more than one protestor will not be considered. Protest letters must provide the license number, trade name, or applicant name associated with the license being protested for identification purposes. Protest letters must contain a clear statement of the writer's intent to protest the application. The grounds for protest of an application for a transfer of location are limited to those set out in section 16-4-405, MCA, for a denial of a license, and public convenience and necessity as set out in section 16-4-203, MCA. If the protested application is for a transfer of ownership not involving a transfer of location, the grounds for protest are limited to those set out in section 16-4-405, MCA. Protest letters which do not provide the information described in this paragraph will not be considered valid protest letters. Only those grounds for protest raised in valid protest letters will be considered at hearing. An individual's testimony will be limited to the grounds for protest raised in that individual's valid protest letter.

If the department receives a sufficient number of protests to require a hearing pursuant to section 16-4-207(4)(a), MCA, a hearing will be scheduled in Helena, Montana. If the department receives a sufficient number of protests to require a hearing pursuant to section 16-4-207(4)(b), MCA, to determine public convenience and necessity, a hearing will be held in the county in which the proposed premises is located. All qualified protestors will be notified of the time, date and location of the hearing. Hearings are typically scheduled within 90 days following the protest deadline.

If a sufficient number of protests to require a hearing are not received and all licensing criteria have been satisfied, the department may issue the license without holding a hearing.

DATED: July 24, 2012
BY: Jessica Burbank
Compliance Specialist

HEADQUARTERS FOR STOCKMEN

Williston Saddlery

14095 West Front Street - Williston, ND 58901
4 1/2 Miles West on Hwy. 2



• Trailers
• Saddles & Tack
• Complete Feed Line
• Livestock Equipment
• Animal Health Products

*"If ya wants it - we gets it.
If we ain't gets it - we can gets it.
If we can't gets it - ya don't really wants it!"*

We are like a good Horse -
We aim to please

TELEPHONE
(701) 572-2267

Skalsky Auto Sales

2009 Chevy Cobalt Tan	\$8,500.00
2008 Chrysler Town & Country Van LX	\$11,500.00
2008 Chrysler Sebring Gray	\$10,500.00
2009 Pontiac G5 Maroon	\$10,500.00
2009 Pontiac G5 GT White	\$12,500.00
2009 Chevy Malibu	\$13,500.00
2010 Dodge Avenger Silver	\$11,500.00
2009 Chevy Suburban White	\$22,500.00
2008 GMC Acadia AWD SLE	\$20,500.00
2010 Ford Fusion Maroon	\$11,500.00
2010 Honda Civic Sedan Silver	\$13,300.00
2010 Honda Accord Sedan Silver	\$13,300.00

Call Don 701-770-1949 or Call Gary at 701-770-7751
Located Airport Avis Parking Lot

Kilen Backhoe Service

- Sewers • Basements
- Water Pipelines

Marvin (406) 798-3601
Marlon (406) 489-1243
Kenny (406) 489-1426

Mini-Storage

STORAGE UNITS AVAILABLE

20X20 • 10X20
10X16 • 8X9

Sidney, MT
482-3799 or 482-2666

The Roundup

Reaching over 8,400 Households in Western North Dakota and Eastern Montana Every Week

Classified Ad Order Form (Please Print)

1	2	3	4	5
6	7	8	9	10
11	12	13	14	15
16	17	18	19	20
21	22	23	24	25
26	27	28	29	30 \$7.00
31 \$7.10	32 \$7.20	33 \$7.30	34 \$7.40	35 \$7.50 (etc.)

\$7.00 for 30 words or less; additional words 10¢ each

Number of words _____ x Number of Times _____ = Cost \$ _____

Payment Must Accompany Ad

Name _____

Mail To:
The Roundup
P.O. Box 1207, Sidney, MT 59270

FOR SALE

1941 Piper J-3 Cub, C-85 Continental, Super Cub gears, sealed struts. \$22,500. 406-482-8057.

FOR SALE

1986 Allegro class-A Motor Home, fully self-contained, as new inside. Air-conditioning, 2-way large refrigerator/freezer, microwave, sleeps 8 very comfortably. \$5,900. Fromberg, MT. 406-668-7400.

MISCELLANEOUS

FOR SALE

WAGON FOR SALE

Antique wooden wagon, not useable, good as a yard decoration. 406-480-3260.

FIRE RESISTANT

Fire resistant clothing available at The Other Place, Culbertson, MT. 406-787-5211.

FOR SALE

25' tall Windmill for decorative purposes, \$1000 OBO. 406-798-3314.

FOR SALE

Brand-new 15 ft. Canvas-only for electric awning. 406-489-4947 or 406-798-3848.

FURNITURE FOR SALE

1 dresser, \$35; 2 living room chairs, \$55 each; 2 lamps, \$30 each; dining room table with 6 chairs, \$175; 1 couch, \$400 each; love seat, \$375; glider rocker & foot rest, \$200; lazy boy recliner, \$350; coffee table, \$200, 1 end table, \$100; china hutch, \$150. All in good condition. 406-480-3260.

FOR SALE

Liquor license for beer & wine in Sidney, MT. This 1 of 6 quota licenses in Sidney is much more liberal than a regular "restaurant" beer & wine license. Can be used alone with minimal food service or in current restaurant. Panini's Pizzeria, 102 N. Central Ave., Sidney. 406-488-7431 or 406-489-7431.

WANTED

SIDNEY COMBAT CLUB

We train men & women for mixed martial arts competitions, self-defense and conditioning. Mon-Thurs. 7 pm. Kayla Mindt is now training for our Fall event. 34752 CR 119, 5 miles south of Sidney on Hwy 16. First two weeks free. \$50/month. For more info, call Barry 406-480-2024.

WANTED

Japanese swords and other related items. Will buy, sell, trade, repair, appraise. See David at the Lone Tree Gun Show, Sidney Fairgrounds. August 17-19 or call 406-482-3243 evenings. jswords@mcn.net.

GARAGE SALES

CHRISTENSEN FAMILY

2020 Crocus Dr., Sidney, MT. Five-party garage sale. Power & air tools, vacuums, electric boxes, desks, BBQ. Name-brand clothing; women's, men's, jr's. Lots of purses and shoes. New Avon products. Quality items at low prices. Fri, Aug 18, 4-8 pm, Sat Aug 19, 8am-2pm.

FREE

FREE TO GIVE AWAY

To a good home: 2 female box-trained kittens. Ten weeks old, mostly white. 406-488-3112.

CHEVY'S

LOVE IT OR RETURN IT

GUARANTEE*

2012 SILVERADO 1500 4WD EXTENDED CAB #C4390



MSRP \$33,115
*Total Confidence Price \$34,982
Rebate - \$2,000
*Trade In Allowance - \$1,000
Consumer Cash - \$100
*Bonus Cash Alternative - \$300

\$30,982



2012 TAHOE LTZ #C4336



MSRP \$34,710
*Total Confidence Price \$34,204
Rebate - \$1,250
*Bonus Cash Alternative - \$300

\$54,458

2012 SILVERADO 3500 4WD WT WITH KNAPHEIDE BOX #C4702



MSRP \$41,911
*Total Confidence Price \$42,229
Rebate - \$2,000
*Bonus Cash Alternative - \$300

\$39,729

2012 SILVERADO 1500 4WD CREW CAB #C4376



MSRP \$38,715
*Total Confidence Price \$36,538
Rebate - \$2,500
*Consumer Cash - \$500
*Trade In Allowance - \$1,000
*Bonus Cash Alternative - \$300

\$32,008

2012 SILVERADO 1500 4WD CREW CAB #C4367



MSRP \$38,510
*Total Confidence Price \$37,290
Rebate - \$2,500
*Bonus Cash Alternative - \$300
Trade Allowance - \$1,000
Consumer Cash - \$500

\$32,736

2012 SILVERADO 1500 4WD CREW CAB #C4382



MSRP \$37,825
*Total Confidence Price \$35,815
Rebate - \$2,500
Consumer Cash - \$500
*Trade In Allowance - \$1,000
*Bonus Cash Alternative - \$300

\$31,315

2012 SILVERADO 1500 4WD CREW CAB LTZ #C4352



MSRP \$40,520
*Total Confidence Price \$42,738
Rebate - \$2,500
*Trade In Allowance - \$1,000
*Bonus Cash Alternative - \$300
Consumer Cash - \$500

\$38,239

2012 SILVERADO 1500 4WD CREW CAB #C4387



MSRP \$38,195
*Total Confidence Price \$35,709
Rebate - \$2,500
*Trade In Allowance - \$1,000
*Bonus Cash Alternative - \$300

\$31,709

2012 SILVERADO 1500 4WD REG CAB #C4564



MSRP \$34,470
*Total Confidence Price \$32,521
Rebate - \$1,500
*Trade In Allowance - \$1,000
*Bonus Cash Alternative - \$300

\$29,521

2012 SILVERADO 1500 4WD EXTENDED CAB #C4291



MSRP \$33,770
*Total Confidence Price \$33,769
Rebate - \$2,500
*Trade In Allowance - \$1,000
*Bonus Cash Alternative - \$300
Consumer Cash - \$500

\$29,269

2012 TAHOE 4WD LTZ #C4493



MSRP \$40,205
*Total Confidence Price \$38,648
Rebate - \$1,250
*Bonus Cash Alternative - \$300

\$54,898

2012 SONIC LT #C4362



MSRP \$17,980
*Total Confidence Price \$17,349
*Bonus Cash Alternative - \$300

\$17,049

35 MPG HWY!

2012 SILVERADO 2500 4WD CREW LONG BOX #C4735



MSRP \$39,621
*Total Confidence Price \$37,711
Rebate - \$2,000
*Bonus Cash Alternative - \$300

\$35,211

2012 SILVERADO 1500 4WD CREW LTZ #C4442



MSRP \$46,744
*Total Confidence Price \$44,808
Rebate - \$2,500
*Trade In Allowance - \$1,000
*Bonus Cash Alternative - \$300

\$40,008

* Includes all applicable discounts and rebates. Must trade in a 1999 or newer vehicle. Bonus Cash alternative in lieu of Love It or Return It Guarantee



SEE THESE SALES CONSULTANTS FOR QUALITY CAR BUYS!



1801 2nd Ave. W. Williston, ND
Call 1-800-888-2927 or 701-577-2927
Hours: Mon. 8am-8pm ; Tues.-Fri. 8am-6pm; Sat. 9am-5pm



www.murphymotors.com

Let Us Put You In A New Home Today!
Turn key-we can do it all! Land/Home packages available

Birch \$59,743 3820 6th Ave W • Williston 701-774-5310
pkylecampbell@hotmail.com

New Recruits Needed For Ambulance Service

The Richland County Ambulance Service is looking for compassionate, hard-working, dynamic individuals to become members of its life-saving service. An Emergency Medical Technician (EMT) training class will start in early September and will last for 3 months.

The self-paced course includes online and classroom participation. The course also offers on hands-on skills stations that work to develop teamwork skills and prepare students for real life emergency situations. "We set up stations where the trainees have to come in and assess the situation, treat and stabilize the patient, and prepare them for transport to the hospital for additional care," said Josh King, Director of the Richland County Ambulance Service. "We try to be as hands on as possible."

EMTs are an essential part of the healthcare system and vital to patient care. The chances of patient survival in a medical emergency situation increases in direct correlation to the speed with which care is administered. Richland County is fortunate to have ambulance services spread throughout the county with ambulances located in Fairview, Lambert, Savage and two in Sidney, and to have more than fifty dedicated volunteers from all four communities. More trained EMTs in a community results in faster response times in emergency situations.

"Our EMS system relies heavily on the continued support of Richland County communities for supplying volunteers," stated King. "Due to heightened call volume, we are seeking people with the desire to be in the midst of a fast-paced and rewarding



The Richland County Ambulance Service is looking for compassionate, hard-working, dynamic individuals to become members of its life-saving service. An Emergency Medical Technician (EMT) training class will start in early September and will last for 3 months.

opportunity that has a visible impact on our community."

The on-call schedule for Fairview, Lambert and Savage is accommodating to personal schedules. EMTs that are available when the call comes in are the ones who will respond. "This schedule is more convenient for the EMTs, but we need a lot of EMTs in each area in order to make it work," stated King.

Melissa Sanders of Sidney has always wanted to be an EMT. "I took the class not realizing that Richland County was in need of EMT volunteers. As we got more

in depth in the class, it became apparent why it was necessary to have so many volunteers," stated Sanders. "We live in a rural community and rely heavily on volunteer EMTs. Some of our volunteers have been with us a long time and are looking to retire. We need another group of individuals to step up and take their place. Other communities around Richland County are seeing their volunteer base decline drastically for that same reason. We don't want that to happen here."

People of all ages and backgrounds are encour-

aged to sign up for the upcoming course. The current EMTs make themselves available to help mentor and answer questions that the trainees may have, and King tries to make the class schedule flexible if necessary. "We have an open door policy and really want everyone to succeed. The better training that they receive, the stronger our service will be," stated King.

Individuals interested in this annual EMT training should call the Richland County Ambulance Service at (406) 488-2180 to apply. The next scheduled session is slated for Fall 2013.

85

Come help the family of **Elizabeth Hatter** Celebrate her 85th Birthday with an open house and softball game on **Saturday, August 18 from 2pm to 7** at the home of Dave & Crystal Hatter. Potluck Supper at 6pm Meat & Buns Will Be Provided

Please Bring Lawn Chairs No Gifts Please.

Basin Heating & Cooling

- Air Conditioning
- Furnaces, Heat Pumps
- Radiant Heat, Boilers
- Free Estimates
- 24 Hour Service
- RV Air Conditioning

Commercial & Residential HVAC
"High Quality, Low Prices"
701-570-7581
basinheating@yahoo.com
www.basinheating.com

Sidney Leadership Committee Seeks Applicants

The Sidney area has many things to offer the community members, whether you are new to the area, or a longtime resident. Year after year, participants in the Sidney Area Chamber of Commerce and Agriculture's Leadership

Class learn about the businesses, agriculture, tourism and recreation, health and human services, education, energy and local government in our area. This class offers a unique and interesting view into the many different facets of our town and area, and is a great opportunity to meet new people.

The Leadership Task Force is currently recruiting participants for next year's class, which will start in September. Planning is already underway for the different Issue Days, with this year's class shaping up to be a great success. Typically, businesses will sponsor one of their employees to attend the class, which is a two-year

commitment. The participants need to attend 7 Issue Days, 3 Skills Development seminars, the annual Chamber Banquet, a school board meeting, a city council meeting, Leadership Class graduation, and a candidates forum should it be an election year. The second year of commitment will allow the participant to plan an issue day of their own for the next class.

This class is a great opportunity for community members to get involved. If you are interested in taking this class, or would like one of your employees to participate in the program, call the Sidney Area Chamber of Commerce and Agriculture at (406) 433-1916.

Hurry Event Ends Soon!

Get a Free Boxspring with purchase of any iComfort® Sleep System
*Flat boxspring only. August 2 - Sept. 9, 2012

FREE BOXSPRING EVENT

OR SAVE UP TO \$400 on a Serta Motion Perfect® Foundation

25 year warranty
IN-HOME 120 DAY RISK FREE TRIAL

JOHNSON HARDWARE & FURNITURE
since 1915

406-433-1402 • 111 S. Central Ave., Sidney, Mont. • www.johnsonhardwareandfurniture.com
Hours: Mon.-Fri. 8 a.m.-5:30 p.m. • Sat. 8 a.m.-5 p.m.

The EASE OF WOOD post-frame. The STRENGTH OF STEEL trusses.

Take Advantage Of Our 7 Year ZERO-INTEREST-LOAN or SAVE UP TO 21% On a CASH Payment!!!!

RESIDENTIAL	AGRICULTURE	COMMERCIAL	SIZE	MONTHLY PAYMENT
			24'x36'x12'	\$173*
			30'x48'x12'	\$205*
			36'x48'x14'	\$288*
			42'x60'x14'	\$350*
			60'x64'x18'	\$545*

*Prices include installation, 1 entry door and 1 garage door. Prices are subject to change. Prices are subject to site specifics and location. 7 Year ZIL is subject to credit approval. Loans are non-secured and require a 10 minute phone interview. Payments may vary.

MONTANA POST FRAME

THUNDERBOLT, MT 101 9th St. Suite C 406-284-0065
SIDNEY, MT 111 2nd Ave SW 406-318-2276

WWW.MONTANAPOSTFRAME.COM