

The Roundup

PRSRT STD
U.S.
POSTAGE
PAID
The Roundup

(406) 433-3306 or 1-800-749-3306
Fax (406) 433-4114
e-mail address:
info@roundupweb.com
www.roundupweb.com

Business Office:
Located at 111 West Main
Sidney, MT

Mailing Address:
P.O. Box 1207
Sidney, MT 59270

PRSRT STD
ECRWSS
U.S. POSTAGE
PAID
EDDM RETAIL

Local
Postal Customer

Wednesday, January 20, 2016

Volume 41 • Number 49

Sidney Chamber Banquet Award Winners



The Sidney Area Chamber of Commerce and Agriculture held their Annual Banquet on Monday, January 18th at the Elks Lodge. From left to right, Vanessa Pooch was received the Agriculture Award, Leslie Messer accepted the Making A Difference Award on behalf of Richland Economic Development, Electricland owners Raleigh and Deb Peck received the Horizon Award, Svyenna Meldahl received the Educator of the Year Award, and Lola Herbert and Dave Moore received the Sunrise Spirit Award. Not pictured are Trisha Klempel who received the Entrepreneur's Award and Kevin Roth who accepted the Partners in Progress Award on behalf of Sidney Sugars. (Photo by Meagan Dotson)

USDA & Montana State University Extension Announce Farm Bill Meetings

Submitted by USDA Farm Service

USDA Farm Service Agency (FSA) and Montana State University (MSU) Extension today announced seven Farm Bill informational meetings in communities across Montana.

USDA and MSU Extension are conducting the meetings to inform Montana producers about important changes to the Noninsured Crop Disaster Assistance Program (NAP) authorized by the Agricultural Act of 2014 (2014 Farm Bill). NAP coverage provides financial assistance to producers of noninsurable crops when low yields, loss of inventory or prevented planting occurs due to natural disasters. The next NAP sales closing date in Montana is March 15, 2016 for spring-seeded 2016 NAP crops.

These meetings will focus on the improved NAP program, administered by local FSA offices across Montana. MSU Extension will explain the online NAP Farm Bill Decision Tool that is available to assist current and prospective NAP producers.

The decision tool can be accessed at <http://fsa.usapas.com/NAP.aspx>.

Producers are invited to attend any of the seven scheduled meetings. These meetings are free and open to the public. Please RSVP with your local FSA office or to Jennifer Cole at 406.587.6786 or jennifer.cole@mt.usda.gov no later than Feb. 3.

NAP Meeting Schedule

Feb. 8, Billings, 5 p.m. to 7 p.m., Residence Marriot (956 S. 25th St. W)

Feb. 19, Sidney, 10 a.m. to noon, Richland County Extension Office (1499 N. Central Ave.)

For more information, including a printable schedule, visit MSU Extension's Farm Bill website at <http://www.montana.edu/farmbill> and Montana FSA's website at www.fsa.usda.gov/mt.

Persons with disabilities who require accommodations to attend or participate in a meeting should contact Jennifer Cole on 406.587.6786, or Federal Relay Service at 1-800.877.8339, and jennifer.cole@mt.usda.gov by Feb. 3.

Public Scoping Meeting Scheduled For Intake Diversion Dam Fish Passage Project In Montana

Submitted by Tiffany Vanosdall

The U.S. Army Corps of Engineers and Bureau of Reclamation will hold a public meeting on Thur., Jan. 21, 2016 from 6 - 8 p.m. at the Dawson County High School Auditorium, 900 N. Merrill Ave., Glendive, MT. to gather input on the development of an Environmental Impact Statement (EIS) for the Intake Diversion Dam fish passage project.

The meeting, which will be an open house format with no formal presentation, will provide the public with information about possible options to improve fish passage at the Intake Diversion Dam and identify impacts to the environment. Staff from the Corps and Reclamation will be available to discuss options being considered for further analysis. The public is encouraged to provide comments on the scope of the issues and alternatives to be considered in the EIS. Comments may be submitted by mail to: U.S. Army Corps of Engineers Omaha District; Attn: CENWOPMAA; 1616 Capitol Avenue, Omaha, Nebraska 68102 or emailed to cenwoplanning@usace.army.mil. Comments must be postmarked or received by Feb. 17, 2016.

The meeting facility is accessible to people with disabilities. People needing special assistance to attend or participate should contact the U.S. Army Corps of Engineers at the address or email provided above. To allow sufficient time to process special requests, please contact Tiffany Vanosdall no later than one week before the public scoping open house. The public scoping meeting date or location may change based on inclement weather or exceptional circumstances. If the meeting date or location is changed, the Corps and Reclamation will issue a press release and post it on the web at www.usbr.gov/gp/mtao/loweryellowstone and www.nwo.usace.army.mil to announce the updated meeting details. For more information about the project, visit <http://www.usbr.gov/gp/mtao/loweryellowstone>.

Benefit Dinner For Parker Dahl Jan. 30

Submitted by Tara Johnson,
Manager Waterhole #3, Fairview, MT

Parker Dahl is a 23 year old local who is suffering from an Increased Inter-Cranial pressure with no known cause.

A benefit will be held on January 30th, Waterhole #3, 5:00 p.m. for help with medical bills. At the event BBQ pork, salad, baked beans and dessert will be served for a Free Will Donation. There will also be a silent auction and a live auction at 8:00 p.m. with live music to follow until midnight.

Parker was diagnosed with this condition at the age of 16. It is a very rare condition and his doctors have been baffled as to the cause. "Uncharted waters" is the term they keep using.

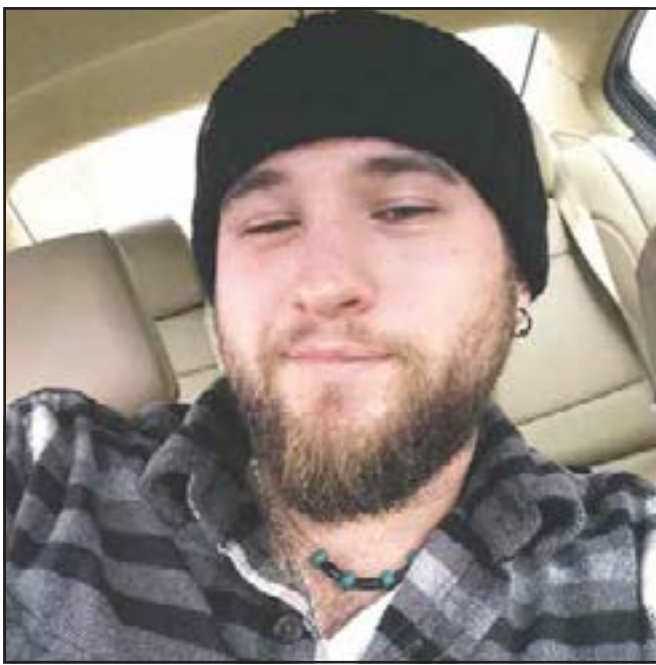
Parker was recently admitted to the ICU in Virginia as his illness took a turn for the worse.

If there are any questions please contact Tara Johnson or Angie Dietrich at 406-480-4018.

Thank you for your time and efforts in helping us raise money for Parker and his family. The medical bills alone are thousands.

Go Fund Me account link: gofundme.com/a9yghyeh

Contact: Angie Dietrich 406-480-4018 for questions or donations.



Parker Dahl

Public Comment Sought on Navratil Channel Migration Easement

Submitted by Erin O'Connor

Montana Fish, Wildlife & Parks (MDFWP) invites the public to comment on a proposal to fund the purchase of a perpetual channel migration easement on 89.5 acres in Richland County along the Yellowstone River near Sidney, MT. A channel migration easement (CME) is a conservation easement that includes land bordering a stream or river where the Landowner agrees not to riprap or otherwise stabilize the river bank, thereby allowing the river's natural erosive processes to continue.

Montana Aquatic Resources Services (MARS), after entering into an agreement with MDFWP, located willing landowners, Gerald and Maryellen Navratil. The purpose of the Navratil CME is to preserve and protect the conservation and agricultural values of the land, particularly the habitats provided for fish and wildlife species, and to prevent armoring of the river bank within the easement area, in perpetuity. MARS sought a third party to hold the easement; Montana Land Reliance (MLR) agreed to hold the channel migration easement.

Formal public participation will begin with the availability of a Draft Environmental Assessment (EA) for public review for a three-week comment period. The EA can be viewed on the MDFWP website at: <http://fwp.mt.gov/news/publicNotices/> or is available upon request from the MDFWP Region 7 office.

A public hearing will be held at the MSU Richland County Extension Building, 1499 N. Central Ave, in Sidney, MT on Jan. 27 at 7 p.m.

Public comments will be accepted until Jan. 29, 2016. Written comments can be submitted online, emailed to mibackes@mt.gov, Attn: Navratil Channel Migration Easement Proposal, or mailed to the address below:

Montana Fish, Wildlife & Parks
P.O. Box 1630, Miles City, MT 59301
Attn: Navratil Channel Migration Easement Proposal

MNAXLP



Dan Cayko

New Detailing Business in Fairview, MT

Submitted by Sheridan Martin

DMC Detailing owned by Dan and Monica Cayko opened January 4th, 2016. The new business will feature services such as interior and exterior cleaning and even headlight restoration. "We are very excited to open the business," said Dan Cayko, "I have always been very passionate about cleaning and we have a shop right at home run to our business."

Dan Cayko was recently working in the oil field but later sold his company; he has opened the detailing business to stay active in his community and to be involved with something he has always enjoyed doing. Cayko went to school in Pittsburgh, PA, where he took part in many hands-on classes and earned his Craftsmen Certificate. "Since school, I have read many books, watched and listened to CDs and learned much more about the business on my own. I have the right tools and know the right tools to use for the right job."

DMC Detailing is taking appointments now and can be found at 205 Jennison Drive, Fairview, MT. Citizens can call and schedule an appointment at 406-480-5665 or 406-489-3280.



REAL ESTATE FINANCING
For Home Purchases & Refinancing
Stop in today and see Janet Sergent in Sidney



Richland
FEDERAL CREDIT UNION



Yellowstone Chiropractic Clinic
(406)-433-4757 222 2nd. Ave. SW
1-866-433-4757 Sidney, MT 59270



Dr. Ryan Laqua
Chiropractic Physician &
Certified Medical Examiner

COOKS ON MAIN
Registry Service

- Online access to gift list
- Online purchasing from the list
- 24/7 Toll-Free customer service
- Trained store staff to assist you

.....

Creating a Registry

- Contact the store to make an appointment (preferred but not required)
- Work with a trained Registry Specialist to customize a list

.....

Key Categories

- Bakeware - Cookware
- Cutlery - Gadgets
- Linens - Small Electrics



COOKS ON MAIN
for the everyday chef

Hours: Mon - Sat: 9am - 6pm
224 Main Street • Williston, ND | 701-572-2665

AREA RECOVERY GROUPS

MONDAYS:
12 p.m. — AA Group Trinity Lutheran Church Ed. bldg., 214 S. Lincoln Ave, Sidney.
1 p.m. - 3 p.m. — Grief Reovery Support group at First Lutheran Church, Watford City.
6 p.m. — Al-Anon,Trinity Lutheran Church Ed. bldg., 214 S. Lincoln Ave, Sidney.
7 p.m. — Fairview Alive and Kicking at Faith Alliance Church, 704 S. Western Ave.
8 p.m.— AA Group, Northern Pump & Compression, Watford City. Call 770-3603 or 770-2675 for directions or ride.

TUESDAYS:
7 p.m. — AA Group Trinity Lutheran Church Ed. bldg., 214 S. Lincoln Ave, Sidney.

WEDNESDAYS:
8 p.m.— Al-Anon, Sanford Room, McKenzie Co. Public Library, Watford City.

THURSDAYS:
7 p.m. — NA meeting, MonDak Trucking office Bldg., 725 W. Holly, Sidney.
8 p.m.— AA Group, Northern Pump & Compression, Watford City. Call 770-3603 or 770-2675 for directions or ride.

FRIDAYS:
12 p.m. — AA,Trinity Lutheran Church Ed. bldg., 214 S. Lincoln Ave, Sidney.
12 p.m. - 1 p.m. - AA meeting, basement of Wilmington Lutheran Church, Arnegard.
6:30 - 7:30 p.m.- 5 Stones faith based recovery meeting, Sidney Nazarene, 606 9th St. SW, Back door is open.
7 p.m. — Path to recovery at Faith Alliance Church, 704 S. Western Ave.
8 p.m. — AA meetings, Trinity Lutheran Church Ed. Bldg, Sidney.

SATURDAYS:
7 p.m. — AA 24 hour group, Northern Pump & Compression, Watford City. Call 770-3603 or 770-2675 for directions or ride.
9 a.m. & 7 p.m. — AA Group Trinity Lutheran Church Education bldg., 214 S. Lincoln Ave, Sidney.

SUNDAYS:
7 p.m. — AA Group Trinity Lutheran Church Ed. bldg., 214 S. Lincoln Ave, Sidney.

STATISTICS

LAKE WATER LEVEL REPORT
Sakakawea

Current Elevation.....	1839.6
Last Week's Elev.	1840.0
One Year Ago	1840.0
Release For Day (C.F.S.)	15000

SIDNEY WEATHER DATA
Source: MSU Eastern Agricultural Research Center

Date	High	Low	Precip.
Jan. 04.....	31	40.00
Jan. 05.....	23	80.00
Jan. 06.....	28	140.06
Jan. 07.....	23	170.00
Jan. 08.....	17	40.00
Jan. 09.....	5	-140.00
Jan. 10.....	23	-140.00
Total YTD Precipitation.....		0.06

OBITUARIES

Marilyn Lorenz, 76, Sidney, MT

Funeral services for Marilyn Lorenz, 76, of Sidney were at 11 a.m., Fri., Jan. 15, 2016 at the Community Presbyterian Church in Fairview, MT with Pastor Bob Meehan officiating. Cremation followed services under the direction of the Fulkerson-Stevenson Funeral Home. Remembrances, condolences and pictures may be shared with the family at www.fulkersons.com. Marilyn died on Sun., Jan. 10, 2016 at the Sidney Health Center Extended Care Facility.

Stella Scheetz, 80, Sidney, MT

Funeral services for Stella Scheetz, age 80, of Sidney, MT were held at 10 a.m., Mon., Jan. 18, 2016 at the Ebenezer Congregational Church in Sidney. Pastor David Meehan officiated with burial in the Sidney Cemetery under the direction of Fulkerson-Stevenson Funeral home. Remembrances, condolences and pictures may be shared with the family at www.fulkersons.com. Stella died Tues., Jan. 12, 2016, in Billings, MT.

Kenneth “Ken” Fitzgerald, 74, Sidney, MT

Memorial service for Ken Fitzgerald, 74, of Sidney, MT was held at 3 p.m., Fri., Jan. 15, 2016 at the Fulkerson-Stevenson Memorial Chapel with Pastor Nell Lindorff of First Lutheran Church of Savage. Cremation has taken place under the direction of Fulkerson-Stevenson Funeral Home. Remembrances, pictures and condolences may be shared with the family at www.fulkersons.com. Kenneth died on Sat., Jan. 9, 2016 at Sidney Health Center.

Ready For Our Annual Winter-Time Break?

Submitted by Brandon Thoency

Join us at the 38th Annual GATE (Glendive Agri-Trade Expo) Fri. and Sat. Feb.12 & 13 at the EPEC in Glendive. Vendors are scheduled to come from a multi-state area to bring the newest and best products of interest to the agricultural and building community. Bring your neighbors and friends to this always enjoyable tradeshow. KXGN and Northern AgNetwork will be on hand for live broadcast. Friday's lineup includes Rangeland & Cropland weed seminars from 10 a.m. to 5p.m. and will qualify for applicator points. A Saturday seminar will feature family financial planning from 1 – 3 p.m. The ever popular gun raffle prizes this year are: Grand Prize: Weatherby Vanguard Deluxe 30-06 Walnut Monte Carlo Style Stock with Burris Eliminator III 4-16X0mm Scope 1st Prize: Ruger 77/17 Hornet 24" Hewavy Barrel SS/LEU VX-2 Rifle scope 4-12X40mm Silver 2nd Prize: BPX Medallion Bottom Ejection 12 Gauge Shotgun Once again, enjoy great food provided both days by the excellent cooks of the Gateway Cowbells. Note, that there will not be a dinner with entertainer and dance this year and the focus will be solely on the tradeshow and seminars. Please contact any GATE member or contact 406-987-3777 with any questions or for more information. There are still limited vendor opportunities available so join us as we continue a great tradition of hosting this exceptional agricultural tradeshow.

Cowboy Poet Bob Petermann At MonDak Heritage Center

Submitted by Kim Simmonds

The MonDak Heritage Center will host Cowboy Poet Bob Petermann on Sat., Jan. 23 at 1 p.m. The concert is free and open to the public. Bob Petermann hails from Wibaux County, where he was raised on his family's ranch and still resides today. His family entertained themselves with country and gospel music, and his older brother, Ernie, taught Bob to play the guitar when Bob was eight years old. Bob now has a repertoire of nearly 200 cowboy classics, country tunes, gospel standards and songs he has written himself, and has performed for people around the world, from campfires to venues across the West. Petermann also has three recordings to his credit. His most recent disc is "Dance in the Round Corral," and features art of local artist Trish Stevenson. He thinks of his style of cowboy music as purist, and wants to keep the traditions of the rancher and cowboy poet alive. On display during the concert will be New Works by the Blue Buffalo Artists. The group displays a wide range of styles including traditional, historic western scenes, sensitive portraits, colorful rodeo and beautifully impressionistic landscapes. Local artists, including Stevenson, Afton Ray Rossol and Rhonda Whited, are part of the exhibit, and all works will be available for purchase after the show. Tickets to see Cowboy Poet Bob Petermann are completely free and no reservations are necessary. The MonDak Heritage Center is located at 120 3rd Avenue SE in Sidney. If you have any questions, please call the museum at 406-433-3500 or email us at mdhc@richland.org. For more information please contact Kim at the MonDak Heritage Center, mdhc@richland.org.



Bob Petermann

EVENTS

SEND US YOUR EVENTS!
THE ROUNDUP: PO Box 1207
111 West Main • Sidney, MT 59270
406-433-3306 • Fax: 406-433-4114 • Email: classads@esidney.com

RICHLAND COUNTY

Events in Sidney unless otherwise listed. MT Zone.
Wed., Jan. 20
2:30 - 4:30 p.m. - After School Enrichment. Ages 6 and up. \$50 for six weeks. MonDak Heritage Center. 406-433-3500.
5 - 10 p.m. - Community Pint Night- Meadowlark Public House. \$1 for every pint sold will go to support a community organization.
7 p.m. - Wood Burning class. Learn basics of wood burning with us. \$25. MonDak Heritage Center. 406-433-3500.
Thur., Jan. 21
12 p.m. - Conjugate meal at the Savage Senior Center.
7 p.m. - Ceramic cowboy Boot Painting Class. Paint a cowboy boot with us. \$20. All ages welcome. MonDak Heritage Center. 406-433-3500.
Fri., Jan. 22
10:30 a.m. - Storytime. 0-5 yrs. Richland County Library.
11:30 a.m. Richland County Red Hatters will be meeting at the Country Club for lunch. RSVP with Sylvia at 406-798-3882 or Margaret at 406-488-4613 before Jan. 20.
Sat., Jan. 23
1 p.m. - Cowboy Poet Bob Petermann at the MonDak Heritage Center. The event is free and open to the public. Refreshments will be served.
Tue., Jan. 26
12 - 4 p.m. - Walk in Tuesdays. Come in anytime with your little one and we will create a snowman spoon rest out of wet clay. We will do all artwork for you, no appointment necessary.
3:30 p.m. - Lego Club. Richland County Library.
4:30 p.m. - Lego League. Richland County Library.
Wed., Jan. 27
2:30 - 4:30p.m. - After School Enrichment. Ages 6 and up. \$50 for six weeks. MonDak Heritage Center. 406-433-3500.
7 p.m. - Montana Fish, Wildlife & Parks invites the public to comment on a proposal to fund the purchase of a perpetual channel migration easement on 89.5 acres in Richland County along the Yellowstone River near Sidney. A Public hearing will be held at the MSU Richland Co. Extension Building, 1499 N. Central Ave.
7 p.m. - Wine Glass Painting Class. Come and see what our most popular class is about. \$15. MonDak Heritage Center.
Tue., Jan. 28
6 p.m. - MonDak Writer's Group. All skill levels accepted. Free MonDak Heritage Center.
Fri., Jan. 29
9 a.m. - 12 p.m. - Senior commodities will be distributed at the back door of the Nutter Building located at 123 W. Main. Message phone is 406-433-4353.
10:30 a.m. - Storytime. 0-5 yrs. Richland County Library.
6 p.m. - Sidney Sportsman's Night Out at the Richland County Fairgrounds. Sponsored by Ducks Unlimited. For tickets or more info call Stacey at 406-489-2004.
Sat., Jan.30
5 p.m. - 12 a.m. - Parker Dahl Freewill Donation Dinner at Waterhole #3 in Fairview, MT.
6 p.m. - Richland County Republican Central Committee Lincoln-Reagan Dinner. Social with hors d'oeuvres at 6 p.m. Dinner at 6:30 p.m. Everyone welcome. Speakers are local and state Republican Candidates. Steak dinner, live & silent auction. Tickets \$35 presale, \$40 at the door, Students \$25. Richland County Fairgrounds. For more info call 406-480-4575 or 406-480-2953.
Sun., Jan. 31
2 p.m. - Downtown Abbey Tea Party. Come celebrate the final season at the MonDak Heritage Center. This event will include commemorative photographs, delicious treats and tea, games and crafts. Wear your hat to participate in our hat contest, with prizes going to the most historically accurate, people's choice and most creative. Space is limited so contact 406-433-3500 to reserve your seats. \$15 for members & \$20 for non-members.
Mon., Feb. 1
5 p.m. - 7 p.m. - In-Person Soccer Registration at the Eastern Ag Research Center/4-H Extension Office Building. The cost is \$45 per player and must be 5 years old by April 1, 2016 up through grade 12. You can also register online at www.midrivers.com/~sidsoccer/, and you can mail registration to Sidney Soccer Association, P.O. Box 604, Sidney, MT, 59270.

WILLIAMS COUNTY

Events in Williston unless otherwise listed. CT Zone.
Wed., Jan. 20
5 p.m. - Mission Improvable at Williston State College. An audience-involved, on the spot comedy act.
7 p.m. - Williston Camera Club at James Memorial Art Center. All levels of experience are welcome.
Fri., Jan. 22
6 p.m. - Williston Chamber Annual Banquet. Located at the Grand Williston Hotel & Conference Center. VIP Reception @6 p.m. Dinner @ 7 p.m. \$65 for members and \$85 for non-members.
Mon., Jan. 25
9:30 a.m. - Baby Time. This is a 30 minute program geared for infants from birth to 24 mo. We read board books, sing songs, act out finger plays and engage in social play. Located at the Williston Community Library.
Thur., Jan. 28
5 - 7 p.m. - Winter Wine Mixer and University Commons Grand Opening. Come enjoy complimentary wine tastings, gourmet meat and cheese platters, a grilled appetizer bar and fully stocked Viennese dessert table.

McKENZIE COUNTY

Events in Watford City unless otherwise listed. CT Zone.
Mon., Jan. 25
12:30 pm - 2:30 pm -Stepping On. A community based 7 wk program to be held at Outlaws Bar & Grill in Watford City. Sessions will follow at Outlaws. Pre-reg. requested prior to attending. Please contact McKenzie Cty Ext. office @ 701-444 3451.

DAWSON COUNTY

Events in Glendive unless otherswise listed. MT Zone
Wed., Jan. 20
12 - 1 p.m. - Lunch and Learn at the Glendive Public Library Community Room. Cherie LeBlanc, Executive Director of the Eastern MT CASA GAL, Court Appointed Special Advocate, Guardian Ad Litem, will speak as to how they are providing Montana's children with a voice, a hope and a future so they can thrive in safe, permanent homes. Tea and coffee provided bring your own lunch.
Thur., Jan. 21
6 - 8 p.m. - U.S. Army Corps of Engineers and Bureau of Reclamation will hold a public meeting at the Dawson Co. High School Auditorium located at 900 N. Merrill Ave, Glendive, MT. This meeting is to gather input on the development of an Environmental Impact Statement for the Intake Diversion Dam fish passage project.

Artist Mia DeLode at the MonDak Heritage Center

Submitted by Trish Stevenson
Mia DeLode is a fourth generation rancher from central Montana. Born and bred to be part of the rural west, she is an accomplished painter, sculptor, and writer of the culture, animals, people and the humor that is unique to western living. Her paintings appear in many shows and her writing has been featured in Crazy Woman Creek published by Mariner Books, a three part anthology of western women. She was given special recognition by the Montana Great Falls Historical Museum for her work titled '1890's First Responders' featuring the last working team of fire horses in the United States. Her oil paintings are bold in color and texture using thin glazes, heavy brushstrokes and palette knife. Mia's paintings evoke the emotion of the time and place and her outlook is best in her own words.
"My Grandmother supplied me with a never ending source of art supplies by the time I was old enough to hold a paintbrush. I never thought to ask why. My teachers in



school were forever frustrated with papers turned in with the margin overflowing with drawings of horses, sheep and cows. They kindly did not try very hard to discourage this. I was lucky. Night skies cluttered with stars, open range, dutch ovens, neighborhood brandings, cowboy coffee, clear water, firm handshakes, working livestock, useful horses and the list is endless of all the parts that make the whole of this wonderful western life. I don't take it for granted. I know I was born to a great way of life and believe the world would be a better place if everyone

could live this way. That isn't very practical so I'd like to share what I can. Things are changing; some things for the better but lose something in the process. I feel a need to capture this, the beauty, the isolation, the spirit and, well, everything. So I had better get with it."
Mia's paintings are included in the Blue Buffalo Artists exhibit currently on display at the MonDak Heritage Center through February 13, 2016. There will be a live performance by cowboy poet and singer, Bob Petermann this Saturday, January 23 at 1 pm.

Insurance For New Biofuel Crop Now Available

Carinata Producers Need to Make Insurance Decisions Soon

Submitted by USDA
USDA's Risk Management Agency today announced that producers in Montana, North Dakota, and South Dakota can insure Carinata by written agreement under the canola and rapeseed insurance plans. Producers must submit a written agreement request to their insurance company by the March 15 sales closing date.
Crop insurance provides protection against a loss in production due to natural perils, such as drought or excessive moisture. A written agreement is a document designed to provide crop insurance for insurable crops

when coverage or rates are unavailable, or to modify existing terms and conditions in the crop insurance policy.
Carinata, a semi-arid plant, is an inedible oilseed sharing characteristics of both mustard and canola and is intended for the biofuel market. The common name for the crop is "Ethiopian Mustard." Carinata is a rotational crop option that can be used to produce jet fuel and protein meal for livestock.
A list of frequently asked questions about insuring Carinata is available on the Billings Regional Office website under the Underwriting Guidelines section.

Eric Bashore, Billings Regional Office director, reminds producers to contact their crop insurance agent for more information on Carinata coverage options. Crop insurance is sold and delivered solely through private crop insurance agents. A list of crop insurance agents is available at all USDA Service Centers and online at the RMA Agent Locator. Producers can use the RMA Cost Estimator to get a premium amount estimate of their insurance needs online. Learn more about crop insurance and the modern farm safety net at www.rma.usda.gov.

MNAXLP

Sidney Adult Education Classes Winter/Spring 2016

Adult Education Classes for Winter/Spring 2016
Please call Sidney High School (433-2330) to register or for more information.

Mondays, Starting January 13th
Latin Dance - Instructor: Kristin Norgaard (480-2746)

Location	Room	Time	Fee
SHS	SHS Commons	5:30 - 6:30pm	\$20

Tuesdays, Starting January 19th
Sewing Serger Class - Instructor: Lucy Lovec (480-1593)

Location	Room	Time	Fee
SHS	SHS Commons	6:30 - 9pm	\$30

Tuesdays, Starting January 26th
Intro to Welding & Metal - Instructor: Ted Fulgam

Location	Room	Time	Fee
SHS	507	7 - 9pm	\$30

Wednesdays, Starting January 13th
Men's Volleyball - Instructor: Dennis Marker

Location	Room	Time	Fee
SHS	Gym	7 - 9pm	\$20

Wednesdays, Starting January 13th
Women's Volleyball - Instructor: Amber Ryckman (701-390-3436)

Location	Room	Time	Fee
West Side	Gym	7 - 9pm	\$20

Wednesdays, Starting January 13th
Winter Frolic - Instructor: Deb Bradley (482-3366)

Location	Room	Time	Fee
Quilts & More	NA	10am	\$20+Supplies

Wednesdays, Starting January 13th
Latin Dance - Instructor: Kristin Norgaard (480-2746)

Location	Room	Time	Fee
SHS	SHS Commons	5:30 - 6:30pm	\$20

Thursdays, Starting January 26th
Intro to Welding & Metal - Instructor: Ted Fulgam

Location	Room	Time	Fee
SHS	507	7 - 9pm	\$30

Anyone interested in teaching a class may contact Sidney High School. Check the Sidney Public School website for more information (click on "Resources"):
<http://sidney.k12.mt.us>

Make Us Your **PARTY** HEADQUARTERS

- Birthdays
- Anniversaries
- Business Meetings
- Bridal Showers
- Baby Showers
- & Any Special Event

2 Private Rooms Available
Powerpoint, Audio & Visual Presentation Capabilities
BOOK YOUR SPECIAL OCCASION TODAY!
For bookings and inquiries call Joel 406-489-3163

520 N. Central Ave.
Sidney, Montana
406-433-3300

SHARE THE **Love**

SUNDAY, FEBRUARY 14

Shop Early For Your Valentine!

STUFFED ANIMALS • CANDY • CARDS • AND MORE!

Barrett Pharmacy & Variety

145 Main • Watford City, ND • 701-842-3311



MONTANA'S OWN

With nearly 600 of Montana's very own employees, Blue Cross and Blue Shield of Montana is one of the most loyal employers in town. Since 1940, we've been here when our boys came home from the war, when you first got married, when you had your first baby and when you went through a family health crisis. We've always been here for you. And we pledge we're not going anywhere. We're Montana's own Real Montanans helping you when you need it most. Through it all.

Learn More or Enroll Today
bcbsmt.com | 1.800.447.7828

A division of Health Care Service Corporation, a Mutual Legal Reserve Company, an Independent Licensee of Blue Cross and Blue Shield Association.

SIDNEY DENTAL

(Formerly Dr. Christensen's Office)

1405 4th ST SW, Suite 4 • Sidney, MT

Sidney Dental is now accepting new patients! Drs. Cole, Ferrara and Christensen are excited to provide Sidney and the surrounding area in all aspects of dentistry:

Implants, fillings, crowns and bridges, dentures, root canals, extractions and Invisalign Orthodontics.

So if you have a tooth that is bothering you or if it is simply just time for an exam and cleaning, Sidney Dental can help!

Call Sidney Dental at 482-2666 today to make an appointment.

Office Hours are Monday-Friday 8am - 5pm

Jesse Cole D.D.S. | Curt Christensen D.M.D. | Franco Ferrara D.D.S.

Sidney Sportsman's Night Out

Friday, January 29, 2016

Richland County Fairgrounds, 2118 West Holly St • Sidney, MT

Tickets:

\$30 - Single | \$50 - Couple

\$700 - Corporate Table

Corporate Tables - Get 8 Seats & Meals Plus a Special DU Over & Under 12-Gauge Shotgun



For tickets, call Stacey at 406-489-2004 or go to www.ducks.org/montana/events

INVENTORY REDUCTION SALE

Make	Description	Sale Price
'91 Buick.....	Regal, 4-Door, White	\$1,500
'95 Cadillac.....	Denville, 4-Door, Gold	\$3,000
'97 Cadillac.....	Catera, 4-Door, Brown	\$2,500
'99 Cadillac.....	Sedan Deville, 4-Door, 77K.....	\$5,000
'04 Cadillac.....	Denville, 4-Door, Maroon.....	\$5,500
'94 Chevy	Suburban, 4x4, Diesel, Blk/Tan	\$7,000
'95 Chevy	1/2 Ton, 4x4, Ext. Cab, Green	\$4,000
'95 Chevy	1/2 Ton, Reg. Cab w/Snowplow	\$6,500
'96 Chevy	1/2 Ton, 2 WD, Ext. Cab, White	\$2,500
'97 Chevy	Cavalier, 2 Door, White	\$2,000
'98 Chevy	1/2 Ton, 4x4, Ext. Cab, White	\$4,500
'00 Chevy	Impala LS, 4 Door, Red	\$4,000
'01 Chevy	Suburban, 4x4, 4 Door, Green	\$7,000
'03 Chevy	Impala, 4 Door, Beige	\$3,500
'04 Chevy	Impala, 4 Door, Red	\$6,000
'06 Chevy	Impala, 4 Door, White.....	\$8,000
'07 Chevy	Silverado, 4x4, Crew Cab.....	\$15,000
'07 Chevy	1/2 Ton, 4x4, Crew Cab, Red.....	\$17,500
'08 Chevy	Impala, 4 Door, Red	\$9,000
'84 Ford	E350, Cube Van, White.....	\$2,500
'89 Dodge.....	Dakota Reg. Cab, Maroon/Silver	\$1,500
'02 Dodge.....	Dakota, 4x4, Crew Cab, Silver	\$7,500
'03 Dodge.....	Stratus, 2 Door, Burgundy.....	\$4,500
'12 Dodge.....	Grand Caravan, 56K.....	\$18,000
'93 Ford	1/2 Ton, 4x4, Reg. Cab, Maroon	\$2,500
'93 Ford.....	1/2 Ton, 4x4, Ext. Cab, Red	\$3,500
'95 Ford	1/2 Ton, 4x4, Ext. Cab, Blue/Silver.....	\$3,000
'96 Ford	1/2 Ton, 4x4, Crew Cab, Red.....	\$5,500
'97 Ford	1/2 Ton, 4x4, Super Cab, White	\$6,700
'98 Ford	Expedition, 4x4, Black.....	\$3,000
'00 Ford	1/2 Ton, 4x4, Super Cab, White	\$3,500
'01 Ford	Escape, 4x4, 4 Door, Red	\$4,500
'01 Ford.....	Focus LX, 4 Door, Black	\$3,500
'01 Ford	1/2 Ton, 4x4, Crew Cab, Blue	\$6,000
'03 Ford	Explorer, 4x4, Silver.....	\$4,000
'04 Ford	Ranger, 2 WD, Reg. Cab.....	\$4,000
'05 GMC	1/2 Ton Sierra, Crew Cab.....	\$15,000
'00 Honda.....	Accord EX, 4 Door, Gold	\$3,000
'99 Jeep	Grand Cherokee, 4x4, Black.....	\$5,000
'04 Jeep	Grand Cherokee, 4x4, Black.....	\$8,000
'99 Toyota	Camry LE, 4 Door, Burgundy.....	\$4,000



1820 2nd St. W. • Williston, ND | 701-572-0114

Downton Abbey Tea Party At MonDak Heritage Center

Submitted by Kim Simmonds

Downton Abbey Tea Party at the MonDak Heritage Center, Sun., Jan. 31, 2016. You are cordially invited to the MonDak Heritage Center in Sidney for a Downton Abbey Tea Party! The event will begin at 2 p.m. and costs \$15 for members and \$20 for non-members.

The event will include a commemorative photograph, tea, sweet and savory refreshments, a lesson in etiquette, games, crafts and trivia. Period dress is encouraged! You can also wear your favorite period appropriate hat for your chance to win a prize for Most Historically Accurate, Most Creative and People's Choice.

Reservations are required and tickets are limited. To purchase your tickets, you can contact the MonDak Heritage Center by calling us at 406-433-3500, emailing us at mdhc@richland.org or by visiting us at 120 3rd Avenue SE in Sidney.

For more information please contact Kim at the MonDak Heritage Center, mdhc@richland.org.

Roosevelt Memorial Healthcare Foundation Scholarships Now Available

By Jaimee Green

The Roosevelt Memorial Healthcare Foundation welcomes scholarship applications for 2016! For area students interested in pursuing a career in healthcare, RMHF is currently offering two, \$500 scholarships to graduating students from the Culbertson, Froid and Bainville School Districts.

Students must be attending, or planning on attending a two, or four year accredited college or university. The scholarship is also available to current college or graduate students in the healthcare field of study who are seeking higher education.

The RMHF Scholarship Committee is now accepting applications until the March 15, 2016 deadline.

Applications will be available through the high school counselor's offices and at the front desk at RMC. Applications can also be emailed to interested students.

"One of the greatest challenges for healthcare organizations in frontier America is recruiting professional staff that will come here and want to stay. Ideally, through these scholarship opportunities, we hope our local youth will someday want to return home and use their professional talents in our area," said Jennifer Kessner, CFO for RMC. "However, the scholarships are a great way for us to assist local students with achieving their educational goals, wherever their professions take them," she added.

Since the program began in 2010, a total of \$4,000 has been given in scholarships.

"The generosity of our donors allows the Foundation to invest in the future of healthcare. It's the Foundation's way of giving back to the community through educational support of the next generation of healthcare professionals," said Audrey Stromberg, Administrator for RMC.

For more information, contact Jaimee Green at (406) 787-6476, or email jgreen@roomsmem.org for an application.

Applications should be mailed to: RMHF Scholarships Program, P.O. Box 419, Culbertson MT., 59218

The RMHF Foundation is a non-profit 501(c) 3 corporation with the mission of enhancing and securing the future of quality healthcare for the region.

MNAXLP

Experts From The MSU Extension Service Have Identified Glyphosate-Resistant Conyza Canadensis, Also Known As Marestalk Or Horseweed, In Northeast MT

Submitted by Fabian Menalled

Experts from the Montana State University Extension Service have identified glyphosate-resistant Conyza Canadensis, also known as marestalk or horseweed, in northeast Montana. The discovery is concerning given how easily this species can disperse in the wind.

According to Timothy Fine, Extension agent in Richland County, and Fabian Menalled, MSU professor and Extension specialist in cropland weeds, marestalk with up to a five-fold increase in resistance to glyphosate, the active ingredient of Roundup and other herbicides, has recently been confirmed in Richland County.

Marestalk is an annual plant native to North America. As a winter or summer species, marestalk emerges in fall or early spring, but it also can germinate in midsummer if growing conditions are adequate. In general, marestalk plants start to bolt in April and May, begin to flower in July, set and disperse seed from August to October and then die. Marestalk plants can produce up to 200,000 seeds that are transported by wind, providing for effective spread of herbicide-resistant populations. Reports indicate that marestalk seeds can easily travel more than 100 miles in a single flight with moderate wind speeds.

As a native to temperate regions, marestalk plants can be found throughout southern Canada, the United States and tropical America. In Montana, marestalk have mostly been reported in Richland, Valley and Phillips counties, where it colonizes croplands, disturbed meadows grasslands and roadsides.

In recent years, due to the spread of herbicide resistance, marestalk has become a challenging weed to manage in reduced-till and non-till cropping systems. In the U.S., glyphosate resistance in marestalk was first confirmed in 2000 in Delaware. Since then glyphosate resistant marestalk has been documented in more than one-third of the continental U.S. In all cases, the evolution of glyphosate resistance in marestalk occurred in row crop systems, including cases of multiple herbicide resistance. This is, however, the first confirmation of glyphosate resistant marestalk in Montana.

Herbicide resistance is defined by the Weed Science Society of America as "the inherited ability of a plant to survive and reproduce following exposure to a dose of herbicide normally lethal to the wild type." The full distribution of herbicide-resistant marestalk genetics in Montana and the mechanisms driving this resistance are still unknown. Whether glyphosate resistance evolved in Montana or it moved from other states, its selection and spread has occurred due to an over-reliance on glyphosate and the failure to develop effective integrated weed management programs.

MSU Extension offers a MontGuide, "Preventing and Managing Herbicide-Resistant Weeds in Montana," which is available free at county Extension offices or online at <http://www.ipm.montana.edu/cropweeds/>. The website www.weedscience.org, from the International Society of Weed Scientists, is also an excellent resource for information on herbicide-resistant weeds.

Questions on preventing or managing herbicide-resistant weeds may be directed to a local Extension office or Fabian Menalled, the MSU Extension crop weed specialist, at (406) 994-4783, or menalled@montana.edu.

Lincoln-Reagan Day Dinner

Sponsored by the Republican Central Committee

Saturday, January 30

Richland County Fair & Event Center

Everyone welcome. Speakers are local and state republican candidates

- **6:00 p.m. Social**
Hors d'oeuvres
- **6:30 p.m. Dinner**
Steak Dinner
Auction: Live and silent auction items, including a rifle

Advanced Tickets: \$35 • At the door: \$40 • Students: \$25

For tickets call Bill Rehbein **406.480.4575** or Ben Johnson **406.480.2953**

County Agent Update

By Danielle Steinhoff

Maternal Breed Indexes

NDSU Extension Beef Specialist, Kris Ringwall, recently wrote an article about Maternal Breed Indexes. The article was featured in North Dakota State Universities BeefTalk: Visit Your Breed Association Website for Maternal Breed Indexes. Ringwall states that the hidden treasures for beef producers are the various breed association websites. These websites help ranchers understand the performance of cattle available within each breed. One newer addition to sire (male) summaries is a selection index, which is available from several breed associations. This index allows cattle producers to select bulls based on multiple traits through the single expected progeny difference (EPD) value. North Dakota State University Extension Service has an information publication out called; Understanding Expected Progeny Differences for Genetic Improvement in Commercial Beef Herds. You can get to that article by going to the following site <https://www.ag.ndsu.edu/pubs/ansci/beef/as1770.pdf> or contacting the Williams County Extension office at 577-4595.

The bull registration numbers are the keys to opening the doors to a lot of information and provide a simple approach to review these available selection indexes within a breed. The indexes help

group various traits, establish a relative importance for each trait and present the answer as a single EPD value for a particular bull for that particular trait. The index should correlate with your herd production or financial goals and combine performance records with economic weights, then generate a selection index value. As with all EPD values, without producer goals and objectives, consistent and repeated selection criteria will not be achieved. Producers need to research the various indexes available and make sure that the selection end point matches their herd goals.

This might sound like it is a challenge for those that have never used EPD values before but they do work. Below is an example that is noted in the publication:

The American Angus Association Weaned Calf Value (\$W), an index value expressed in dollars per head, is the expected average difference in future progeny performance for preweaning merit. The \$W index includes revenue and cost adjustments associated with differences in birth weight, weaning direct growth, maternal milk and mature cow size.

Ringwall wants to make sure producers know that indexes are great tools, provided the producer has a long-term objective and bulls are selected to meet that objective over time. The article from North Dakota State Universities BeefTalk can be found at the following site <https://www.ag.ndsu.edu/news/columns/beef/btalk/beef-talk-visit-your-breed-association-website-for-maternal-breed-indexes>.

MNAXLP

MT Pork Producers Council Annual Meeting On Jan. 21, Coinciding With MAGIE Ag Expo

Submitted by MT Pork Producers Council

Montana Pork Producers Council (MPPC) invites Montana pork producers to attend the annual meeting January 21, 2016, at the Mansfield Civic Center in Great Falls. By design, the event coincides with the MAGIE Ag Expo for producer convenience. The theme is "Leading with Integrity" focusing on the subjects of marketing & contracts, as well as animal and human safety.

John Uecker of USDA's Packers and Stockyards Program will provide guidance to producers negotiating contract terms with their packers, in regards to the program's regulations and rules for prompt payment. This workshop will serve as a tool for understanding the laws guiding the purchase of live hogs, including considerations for verbal contracts and time of ownership transfer.

Dr. Marty Zaluski, Montana State Veterinarian will cover animal health updates pertinent for in-state farms as well as provide an overview of recent Department of Livestock changes, including the selection of a new Executive Officer.

Dr. Steve Larson of the National Pork Board will be presenting key information regarding new antibiotics directives and how they will affect the administration of these

medications within the barns. His presentation will include new educational materials for livestock producers as they make the shift to comply as the regulations take effect. Also included in the seminar is a walk-through of the 2015 Salmonella outbreak, highlighting background information and response by Pork Checkoff, as well as affected State Councils.

Registration and tradeshow begins at 8:30 am on Thursday, January 21. Educational sessions begin at 9:45 am. Other highlights include updates from the National Pork Board, the announcement of state winners in the Symbol of Excellence youth

carcass contest and Montana Ag Safety Program's workshop. The MPPC membership will elect officers and directors and review industry issues late Thursday afternoon in a general meeting. A social will follow with an evening meal served featuring Montana products.

Registration for this event can be accomplished by calling the MPPC office at (406) 557-2982 or via email at mt-pork@midrivers.com. Cost of attendance is \$20 per person, with includes lunch and dinner. Meals may also be purchased separately at \$5 and \$15, respectively.

Johanna Lepel Named To Dean's List At Bob Jones University

Submitted by Randy Page

Johanna Lepel, a Freshman Health Sciences major of Sidney, was among approximately 890 Bob Jones University students named to the Fall 2015 Dean's List. The Dean's List recognizes students who earn a 3.00-3.74 GPA.

Located in Greenville, South Carolina, Bob Jones University is a biblically faithful, Christian liberal arts university focused on educating the whole person to reflect and serve Christ. BJU offers a unique blend of rigorous academic programs, discipleship, and character and leadership development. We are committed to the truth of Scripture and to pursuing excellence in all we do.

BJU provides over 100 undergraduate and graduate programs in religion, education, fine arts and communication, arts and science, and business. BJU has nearly 3,000 students from nearly every state and more than 40 countries.

January BLOWOUT SALE!



2006 Ford F150
FX4 with snow
plow, stk# 6147
\$23,395

DISCOUNTS UP TO \$2,000!

HUGE PRICE REDUCTIONS ON THESE USED UNITS

2011 Ford F150 Raptor, stk# 6065	\$41,495
2012 Chevy 500 LTZ, stk# 8399	\$26,995
2012 Ford Focus Hatchback, stk# 6106	\$13,595
2013 Ford F150 Lariat, stk# 6128	\$35,195
2010 Ford Taurus Limited, stk# 6134	\$17,195
2013 Ford F150 Platinum, stk# 6142	\$37,995
2013 Ford F150 Lariat, stk# 6144	\$41,495
2012 Ford F150 XLT, stk# 6155	\$28,675
2012 Ford Focus SE Sedan, stk# 6162	\$12,495
2013 Ford F350 King Ranch, stk# 6173	\$48,195
2014 Ford Edge SEL AWD, stk# 6175	\$28,195



"Experience the Eagle Country Difference!"

215 East Main • Sidney, MT

433-1810 • 1-800-482-1810 | eaglecountryfordsales.com

USED EQUIPMENT SALE!

Skid Steers • Wheel Loaders
Backhoes • Light Towers • Pumps
Scissorlifts • Boomlifts • Forklifts
Portable Generators (3kW-125kW)

**ALL UNITS AT SPECIAL
END-OF-THE-YEAR PRICING!**
WARRANTY & FINANCING AVAILABLE.



Ken Jacquot, Territory Sales Manager
701-339-0616 • kjacquot@ur.com
5083 Bennett Industrial Drive • Williston, ND
unitedrentals.com

8th Anniversary Celebration Saturday, Jan. 30 • 1 pm

Win Up To
\$800
On Plinko!

Food

Other
Giveaways!



The Oasis

414 S. Ellery Ave.
Located next to the Waterhole #3
Fairview, MT • 406-742-5324

PRAIRIE HILLS Gelbvieh

ANNUAL BULL SALE

40 PUREBRED BULLS - 10 SELECT FEMALES

FEBRUARY 13, 2016 | 1:00 P.M. AT THE RANCH
NORTH OF DICKINSON, NORTH DAKOTA



**PHG CROWN
ROYAL C57**

DOB: 3/6/15 | Purebred
BW: 83 | Adj. WW: 790
Sire: DTKF Sucker Punch
Dam: PHG Z70
MGS: PHG Womanizer W24



**PHG
PAYCHECK C24**

10 PAYDAY
HALF-BROTHERS
LIKE THIS WILL SELL!
AVERAGE WEANING
WEIGHT OF 829!

PRAIRIE HILLS Gelbvieh

GALEN SICKLER: 701-225-9212
KLINT SICKLER: 701-483-5250 or 701-260-1853 Cell



VISIT OUR WEBSITE FOR SALE PREVIEW INFORMATION

WWW.PRAIRIEHILLSGELBVIEH.COM



The Roundup Classifieds

Reach Over 21,000 Readers Each Week In Eastern Montana & Western North Dakota And Always On The Internet at roundupweb.com
(Paypal required for online purchases)

Add a photo to your classy online! (additional charge)

Now Taking Credit Cards!
(5% charge added to all transactions)

Get Up To 30 Words For Just \$9.25 • Deadline: Monday noon

HELP WANTED

PT KITCHEN HELP

The Eagles Club, Watford City, is looking for part time kitchen help. Stop in 1 mi. south Hwy. 85S for an application.

CARRIERS NEEDED

Need extra cash or want to get some exercise while getting paid? We have carrier routes available in most parts of

Sidney. 406-433-3306 or fill out application at The Roundup, 111 W. Main, Sidney.

DRIVER WANTED

Delivery driver for the Roundup, \$14/hr. Must have valid driver's license, be able

to lift at least 80 lbs. One day/week. Pick up application at 111 W. Main, Sidney, MT, or at the Sidney Job Service.

REAL ESTATE COMMERCIAL/RETAIL PROPERTY FOR SALE OR LEASE)

5 ACRE COMMERCIAL LOTS FOR SALE
Conveniently located between Williston & Watford City, right off Hwy. 85. Graded recently. Perfect for a new shop or business! Lots have rural water, power, RTC & electric right at the road. Hwy. 85, S. on 140th Ave. 77 NW, 1/4 mile on right. 406-471-4049.

FOR RENT

RETAIL/OFFICE SPACE

Downtown Sidney, in the Yellowstone Marketplace building. In-house restaurant, all utilities pd., free wi-fi, cellphone booster, \$750/mo. Call Linda at 406-489-1945.

FOR RENT

For rent in Watford City, ND. Mobile home lots, RV spaces & truck parking. Call for pricing. 701-842-3357.

FARM & RANCH

CUSTOM HAY GRINDING
Fodder & Sons, Inc. custom hay grinding. Call Steven Vinnedge or Parker Hesper, 406-781-1197.

SIDNEY FEEDS

Sweet Pro Premium feed supplements for cattle & horses, Hefty Seed Co., south of Sidney. 406-488-4338.

MINERALS & SUPPLEMENTS

Complete line of minerals & supplements, Crystalx protein & mineral tubs for cattle, horses & sheep. All types of liquid feed for livestock. Calving supplies. R&J Ag Supply 406-488-1953, 406-480-2006, 1-800-233-2499, Sidney, MT.

VERMEER HAYING EQUIPMENT

See us today for all your haying & feeding equipment, sweeps & farm oil. Anderson Vermeer Sales & Service. Open Mon.-Fri., 8 a.m.-5:30 p.m. 701-828-3358 or 701-828-3482 (after

hrs.). Alexander.

FOR SALE

Hay for sale. Can deliver any amount. 701-677-5696.

SERVICES

WINDSHIELD REPLACEMENTS

Lowest price around. Quick service. Over 300 windshields in stock for cars pickups & semis. Magrum Motors, 1820 2nd St. W., Williston, 701-572-0114.

TABLES & CHAIRS FOR RENT

Parties, weddings, get togethers. Ultimate Showdown Assoc. located at Hefty Seed Co. South of Sidney, has tables & chairs for rent. Will deliver. Call 406-488-4338.

WELDING

Welding & repair work. No job is too small. Portable welder, reasonable rates. 701-444-2936.

BUSINESS OPPORTUNITY

FOR LEASE

The Sidney Elks Lodge is looking for a catering company to lease their kitchen. For more information, please call 406-480-9052.

FOR SALE

FOR SALE

Wirehaired Pointing Griffon pups. Both parents are hunters & registered. Born 12/8 & ready to go 2/1. 4m & 4f, liver & white color. Tails docked & dew claws removed. \$500. Call or text 406-939-5337.

DRIVER WANTED

Delivery driver for The Roundup, \$14 per hour. Must have valid driver's license, be able to lift at least 80lbs. One day/week.

Pick up application at 111 W. Main, Sidney, MT, or at the Sidney Job Service.



Sidney Health Center's most valuable resource is the people who serve our patients, residents and guests. Join our team!

Certified Nurses Assistant

Extended Care
Nursery
Surgery

Environmental Services

Housekeeper

Hospital Patient Account Rep.

Lodge Resident Assistant On Call

Registration & Charge Entry Clerk

Night Shift

Reimbursement Account Rep.

We promote a Work-Life Balance



For additional information or to apply online, please visit our website or contact: Marilyn Olson • Phone: (406) 488-2571
mjolson@sidneyhealth.org • 216 14th Ave SW • Sidney, MT

Visit Our Website at: www.sidneyhealth.org

NOW SERVING SIDNEY!



Pickup & Drop-offs in Sidney at

MICRÔTEL

INN & SUITES
BY WYNDHAM

406-482-9011
1500 S Central Behind McDonalds

Watford City Available At
Meyer's Department Store
701-444-2906
200 N Main • Watford City, ND

Alterations Are Available
Welders Jeans\$9
Welders Shirts\$6
Starched Dress Shirts... \$4⁵⁵
Starched Jeans \$8⁵⁰

1129 2nd Avenue West
Williston, ND 58801
701-572-3734
Mon-Fri: 8am - 6pm • Sat: 9am - 3pm

Seed For Sale

DURUM

REG. JOPPA
REG. CARPIO
CERT.
LEBSOCK
CERT. ALKABO
CERT. TIOGA
BARLEY
CERT.
TRADITION

OATS

COMMON
MORTON
FLAX
COMMON
YORK
GREEN PEAS
CERT. VIPER
RED LENTIL
CDC MAXIM CL

SOME VARIETIES ARE LIMITED.

Signalness Farms
Larry: 701-770-2500
Jason: 701-770-0926
Watford City, ND



Do you have news or photos you would like in The Roundup?

Richland **Meagan Dotson**
County 406-478-0517

Roosevelt... **Sheridan Martin**
County 406-529-4031

McKenzie.....**Kathy Taylor**
County 701-842-6188

THE BUSINESS ROUNDUP

REACH 26,500 READERS IN THE ENTIRE MONDAK REGION
406-433-3306 OR 800-749-3306 ~ info@roundupweb.com

GO TO WWW.ROUNDUPWEB/DIRECTORY FOR DIRECT LINKS TO COMPANY WEBSITES & LOCATIONS

\$25⁰⁰/WK

NICK JONES REAL ESTATE



TRUCK ROUTE SOUTH, SIDNEY
OR CONTACT ONE OF OUR AGENTS:

JUSTIN JONES
406-480-9525

DENNIS WICK
406-480-1550

JERRIAN FRANZEN
406-478-3773

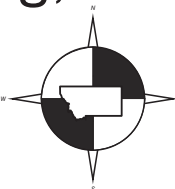
KRISTIN LARSON
406-480-5139
HOME: 798-3115

WWW.NICKJONESRE.COM

BIG SKY Surveying, PC.

Joseph L. Kauffman, 12211 PLS

- Subdivisions
- Land Use Consulting
- Topographic Survey
- Family Transfers
- Boundary Adjustments
- Construction Surveying
- Environmental Consulting
- F.E.M.A. Flood Plain Mapping



PO Box 170 • Sidney, MT 59270 | 406-488-9452 • 406-250-9452 | 215 S Cental Ave • Sidney, MT

AUDIO KLIMAX

- Full Sound Systems
- Standard & Custom Stereos
- DVD Players • Amps & Subs • LED Lights
- Car Remote Start & Alarms

WE'LL COME TO YOU!
(WITHIN 150 MILES)
CALL CORY AT 406-478-1301 FOR DETAILS • SIDNEY, MT

MARTINI STEEL & SEAMLESS RAIN HANDLING

Serving The Region For 50 Years!

- Seamless Rain Gutters
- Siding & Roofing
- Soffit & Fascia
- Maintenance-Free Decks



Office: 406-798-3828 • Tom: 406-480-9078 • Dan: 406-291-0437

DOORBUSTN

Portables & Septic Service, LLC
Blaine Rogers, Owner

PO Box 1003
Sidney, MT 59270

Office: (406) 433-7586
Fax: (406) 433-7598
Service: (406) 489-9815

www.doorbustnportablessepticsevice.com

Coverage for all the things you care for.

TIFFANY STEFFAN
323 E Main Street,
SIDNEY, MT 59270
TSTEFFAN@FARMERSAGENT.COM



Call 406-433-1377 today for Auto, Home, Life and Business.

HOSE ASSEMBLIES WHILE YOU WAIT

MFCP MOTION & FLOW
CONTROL PRODUCTS, INC.
Fluid Connectors • Industrial Hose • Seals
Hydraulics • Pneumatics • Automation
Filtration • Racer • Instrumentation

406.433.1590
After Hours 406.478.3116
Fax 406.433.1589

SIDNEY, MT
205 2nd Ave NE
WWW.MFCPCINC.COM



For all your Farm/Ranch, Recreational, Residential, and Commercial needs.



Alan Seigfreid
Amanda Seigfreid

Jim & Janice Knudsen 120 2nd St. N.E. • Sidney Mt. 59270
Broker/Owners (A) 406-433-3010 • (C) 406-489-3010

email: alans@midrivers.com

Website: www.missouririverrealty.com



Office: 406-433-6757
Fax: 406-433-6755
Mon-Fri: 8am - 6pm
Closed: Sat & Sun
2221 S. Central Avenue
Sidney, MT 59270

Steve Kober

Master Plumber

Plumbing Division
Licensed in MT & ND

Toll Free: 1-877-488-8066
Office: 1-406-488-8066
Fax: 1-406-488-8067
stevek.agri@gmail.com



1775 S CENTRAL AVE • SIDNEY, MT 59270 | WWW.AGRIINDUSTRIES.COM



2265 S. Central Ave.
Sidney, MT 59270
Email: las@sls-services.net
Phone: 406.433.6754
Fax: 406.433.6755



www.slserviceinc.com

Customer Service is Our #1 Priority



Farm & Ranch Products & Construction Materials. New Steel, Aluminum & Stainless.

Brady Smelser • Tim Mulholland • Kelly Moody • Bret Smelser • Ernie Gawryluk
Sidney Williston
35002 CR 123 2703 W. Towne St. 13896 W. Front St. Plentywood
406-433-7737 1-800-423-5219 1-800-820-5493 406-765-2624
1-855-810-2995

Watford City Hockey Action



Watford City's Fox Dodds takes a shot on goal against the Grafton/Park River Goalie in Saturday's game. The Oilers fell to the Spoilers in overtime 4-3



Watford City's Tianna Dwyer breaks up one of Dickinson's offensive attempts in Sunday's 14U Game. The Lady Oilers tied with Dickinson 2-2.



Watford City's Evan Tepsa helps out goalie Kyle Carlson as he makes a save against Williston in Sunday's game against Williston. The Oilers defeated Williston 3-0



Watford City's Eric Hellandsaas skates through Mayport's defense and scores for the Oilers in Friday's night match up on their home ice. Mayport defeated the Oilers in overtime 4-3.



Watford City's Termites took to the ice on Saturday with some in-house competition. Payton Tschetter (black) and Cotton Maxwell (Red) race for the puck.



Young Oiler skaters, Gavin Wirtz and Isiah Castenada, fight for control of the puck in Saturday's in-house Mite game. (Photos by Kathy Taylor)

Soul Therapy Seminars Scheduled

Submitted by Crystal Rasmussen

Area women will have two opportunities to join Licensed Soul Therapist Crystal Rasmussen for a free three hour gathering of women, exploring how to connect to true authentic expression. Sharing your core truth and living your purpose is deeply pleasurable and incredibly satisfying. Most women are blocked from accessing core power and true awareness of self. Soul Therapy is an evolutionary embodiment of exploring your humanness from the SOUL level.

During this time you will be asked powerful questions that will lead you into greater awareness of who you are, why you get stuck, what your soul wants to communicate to you, how to manifest your dreams and how to love yourself. If you have ever wanted to tap into your unlimited potential and be happy in the flow of life with less stress, now is the time to do so.

The free Soul Therapy Introduction in Sidney on Saturday, January 23 will be held at the Wingate by Wyndham motel from 1-4 p.m. The free Soul Therapy Introduction scheduled for Sunday, January 31 in Williston will be held at the Microtel Inn and Suites from 1-4 p.m. An RSVP for the three hour gathering would be appreciated but is not necessary.

For those women who desire to further explore what Soul Therapy has to offer, Crystal invites you to join her for a powerful two day Soul Therapy Seminar, scheduled for February 13 and 14 in Williston. The two day gathering, will assist you in awakening your authentic self and will give you a direct hands-on experience to honor, trust and know yourself from an honest, loving and compassionate space. Understand who you are authentically and discover your true calling and desires.

You will be given invaluable insight to who you are, why you are not manifesting what you desire, and how to plunge into the vast inner wealth that resides within you. Through a supportive environment with other women, you will become consciously



SOUL THERAPY SCHOOL®

aware of what stops you from experiencing wholeness in an empowering and liberating environment.

Soul Therapy Seminars are designed to show you how to remove the barriers that stop you from experiencing and loving a fully expressed, evolutionary life!

For more information or to RSVP for one of the seminars phone Crystal at 406-489-0445 or email crystal@soultherapy-school.com.

CATTLEMEN'S CHOICE SALE

FEBRUARY 1, 2016

1 pm MST • At the Pelton Ranch • Halliday, ND
Selling Hereford, Angus & Red Angus Bulls



CKP Lego 5012 AHA Reg # P43616185
Sire: H WR Lego 3076 ET



RAC Class Act 5348 AAA Reg # 18118197
Sire: BC Classic 385-7

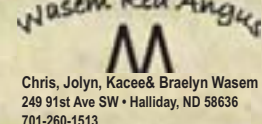
Also Selling a Select Group of Open Commercial Black, Red & Baldie Heifers



WSM Redemption 518C
RAAA Reg # 3492355
Sire: Brown JYJ Redemption Y1334



Shawn Reiss
229 97th Ave SW • Dunn Center, ND 58626
701-590-3422

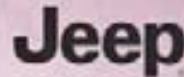


Chris, Jolyn, Kacee & Braelyn Wasem
249 91st Ave SW • Halliday, ND 58636
701-260-1513



Craig Pelton
40 93rd Ave
Halliday, ND 58636
701-260-0058

2015 Inventory Reduction Sale



2015 DODGE DART LIMITED

MSRP \$25,814
RYAN DISCOUNT \$608
REBATES \$3,000

Buy For \$22,206



ONLY 2 LEFT IN STOCK

#22987, 22965

2015 JEEP GRAND CHEROKEE OVERLAND

MSRP \$55,265
RYAN DISCOUNT \$311
REBATES \$1,000

Buy For \$51,154



#22364

2015 JEEP WRANGLER UNLIMITED SAHARA

-WALDOCH PACKAGE
MAJOR SAVINGS!!



ONLY 1 LEFT IN STOCK

2015 RAM 1500 QUAD V6

MSRP \$37,834
RYAN DISCOUNT \$2,907
REBATES \$2,000

Buy For \$32,927



ONLY 3 LEFT IN STOCK

#23144, 23106, 23101

2015 RAM 2500 LARAMIE

MSRP \$57,029
RYAN DISCOUNT \$6,202
REBATES \$3,000

Buy For \$47,827



#22990

2015 RAM 2500 LARAMIE

MSRP \$57,429
RYAN DISCOUNT \$6,312
REBATES \$3,000

Buy For \$48,117



ONLY FOUR LEFT!

#22916, 23141, 29201, 23205

2015 JEEP GRAND CHEROKEE LIMITED

MSRP \$47,795
RYAN DISCOUNT \$2,512
REBATES \$1,000

Buy For \$44,283



#23083, 22978

2015 JEEP GRAND CHEROKEE

MSRP \$59,275
RYAN DISCOUNT \$3,391
REBATES \$1,000

Buy For \$54,884



#22765

2015 RAM 1500 ST TRADESMAN

MSRP \$41,939
RYAN DISCOUNT \$3,784
REBATES \$2,500

Buy For \$35,655



#23224, 23185, 22951, 22950, 22942, 22924

2015 RAM 2500 ST CREW CAB

MSRP \$53,669
RYAN DISCOUNT \$6,587
REBATES \$3,000

Buy For \$44,082



#22570

2015 RAM 2500 SLT

MSRP \$49,754
RYAN DISCOUNT \$5,313
REBATES \$3,000

Buy For \$41,441



#23152, 23130

2015 RAM 3500 ST

MSRP \$54,284
RYAN DISCOUNT \$5,942
REBATES \$3,000

Buy For \$45,342



#22417, 23078

BEST Deals Of The Year!



1212 W 2nd St, Williston, ND • (701) 577-1111 • 1-800-568-5160
www.ryanmotors.net

Prices and savings based on in stock vehicles. Rebates may change without notice.
Prices and promotions good till 1/30/16 and while supplies last.

2016 Sidney Soccer Registration



Online Registration starts now!

Print form online at www.midrivers.com/~sidsoccer/

In Person Registration: Feb 1st

5-7 pm at the Eastern Ag Research Center/

4-H Extension Office Building

Recreation: \$45 per player

(Must be 5 yrs. old by April 1, 2016 up through 12th grade)

There will be a \$15 late fee for all registrations received after Feb. 8.

Registration must be postmarked by Monday, Feb. 22.
No registration will be accepted without payment!

Please mail registration to:

Sidney Soccer Association
PO Box 604
Sidney MT 59270

Lunch Menus

Sidney School
Thurs., Jan. 21: Spaghetti, tossed salad, cheesy breadstick, banana.

Fri., Jan. 22: Hot dog, chips, carrot sticks, peaches.

Mon., Jan. 25: French bread pizza, tossed salad, fresh fruit.

Tues., Jan 26: Chicken taco, salad, pears.

Wed., Jan. 27: Tater tot casserole, green beans, strawberry, banana sauce, dinner roll.

Savage School
Thurs., Jan. 21: Tostados.

Fri., Jan. 22: Hot dogs.

Mon., Jan. 25: Macaroni hot dish.

Tues., Jan 26: Chicken a la king.

Wed., Jan. 27: Beef fritters.

Rau School
Thurs., Jan. 21: Hot dog, baked beans, fruit.

Fri., Jan. 22: Taco salad, corn bread, fruit salad.

Mon., Jan. 25: Goulash, green beans, peaches, roll.

Tues., Jan 26: Chicken quesadilla, salad, oranges.

Wed., Jan. 27: Cook's choice.

Froid School
Thurs., Jan. 21: Chicken fajitas, chips & cheese, taco bar, fruit, milk.

Fri., Jan. 22: Corn dogs, french fries, peas & carrots, salad bar, fruit, milk.

Mon., Jan. 25: Tater tot casserole, fresh rolls, apricots, salad bar, milk.

Tues., Jan 26: Ham, scalloped potatoes, peas, salad bar, fruit, milk.

Wed., Jan. 27: Hamburger gravy over potatoes, green beans, pumpkin bars, salad bar, milk.

Bainville School
Thurs., Jan. 21: Cheeseburgers, french fries, cheesecake.

Fri., Jan. 22: Sub sandwich, chips, celery sticks, fruit.

Mon., Jan. 25: Beef strips, gems, veggies, fruit.

Tues., Jan 26: BBQ chicken legs, corn, strawberries.

Wed., Jan. 27: Sweet-n-sour pork, stir fry veggies, rice, pineapple.

Culbertson School
Thurs., Jan. 21: Chicken tenders, potato wedges, mixed veggies, fruit, milk.

Fri., Jan. 22: Lasagna, bread sticks, salad, fruit, milk.

Mon., Jan. 25: Hamburger stew, bread and butter, fruit, milk.

Tues., Jan 26: Pasta alfredo with chicken, tomato salad, fruit, milk.

Wed., Jan. 27: Turkey, corn, scalloped potatoes, fruit, milk.

Richey School
Thurs., Jan. 21: Lasagna, dinner roll, mixed veggies, pineapple, milk.

Fri., Jan. 22: Cheeseburger, fries, broccoli, mandarin oranges, milk.

Mon., Jan. 25: Pulled pork sandwich, applesauce, green beans, milk.

Tues., Jan 26: Green bean casserole, dinner roll, pineapple, milk.

Wed., Jan. 27: Chicken parm, corn, peaches, milk.

Lambert School
Thurs., Jan. 21: Corn dogs, potato wedges, fruit, milk.

Fri., Jan. 22: Hamburger gravy, mashed potatoes, green beans, buns, peaches, milk.

Mon., Jan. 25: Chicken nuggets, gems, cookie, milk.

Tues., Jan 26: Italian dunkers, peas, pears, milk.

Wed., Jan. 27: Tater tot hotdish, salad, buns, mandarin oranges, milk.

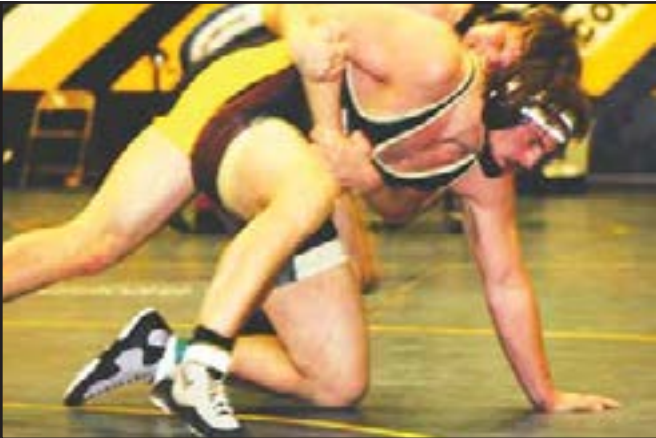
Fairview School
Thurs., Jan. 21: Walking taco, beef, lettuce, cheese, tomatoes, chips, breadsticks, fresh fruit, milk.

Fri., Jan. 22: No school.

Mon., Jan. 25: Hot dogs, cheesy potatoes, fresh fruit, beans, milk.

Tues., Jan 26: Spaghetti, garlic toast, green beans, peaches, milk.

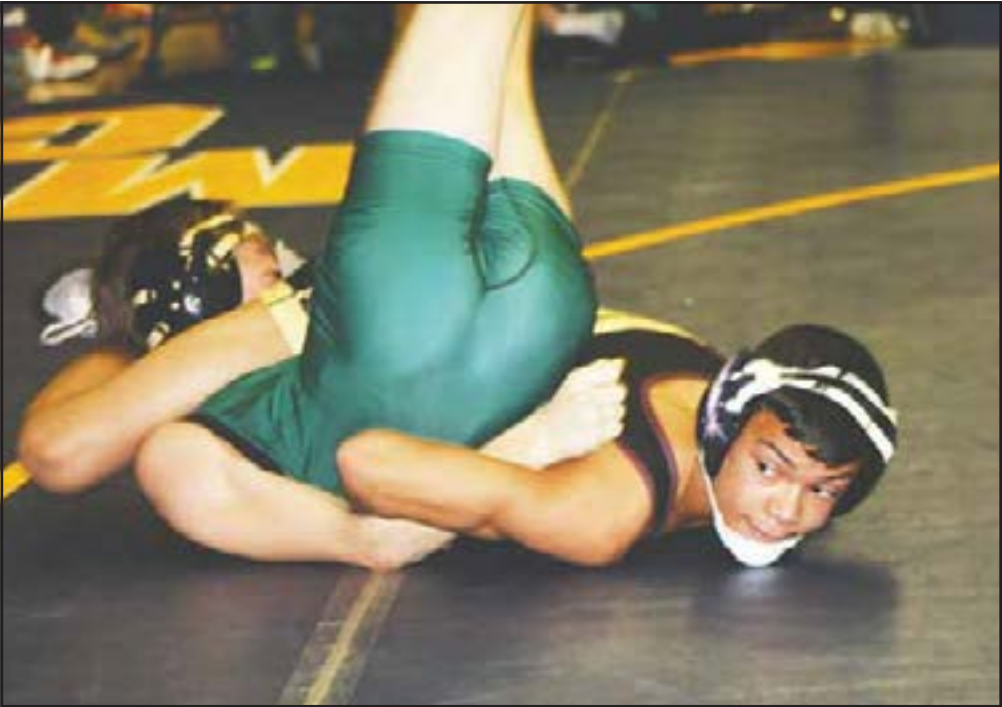
Wed., Jan. 27: Meatloaf, potatoes, cream corn, mandarin oranges, milk.



Hunter Severson works for an escape in the championship match. Severson fell to Colbey Steeke of Hettinger, ND. (Photos by Lisa Gorder)

Cowboy Meet Results

The Sidney High School Wrestling Team Competed at the Cowboy Inviational Wrestling meet last weekend. The team placed 12th and individual placers are as follows:
Brady Gorder placed 8th, Christian Dean placed 5th, Hunter Severson placed 2nd and Jace Winter placed 4th.



Christian Dean gets a pin against Jared Rohlf (Colstrip) in 2:48.

HUGE PRICE REDUCTIONS ON THESE VEHICLES



2016 Buick *Lacorose AWD*



Leather 1SI, 3.6V6, 6spd Auto, A/c, PW, PL, Pseats HTD/cooled Seats
P. Skylight Moonroof, Luxury, Driver Confidence Pkg, Ultra Pkg, Champagne Silver Met/Saogria -Ebony, Accents Leather, B7515

MSRP = \$47,415

SAVE \$7,584⁸⁴ Special = \$39,830¹⁰

2015 GMC *1500 Sierra*

GMC



SLE 5'8" Box Crew 5.3 V8, 6spd ATOD, A/c, PW, PL, P Seat, HTD Seats
AM/FM/XM/CD, SLE Value PKG onyx Black/Dark Ash Cloth, G7043

MSRP = \$47,700

SAVE \$7,632³³ Special = \$40,067

New 2015 Buick *Regal*



FWD, 2.0 Turbo 4cyl, 6 speed Auto Power Sunroof, PW, PL, P Seats, HTD special A/C, AM/FM/XM/CD NAV Intellilink ONYX Black/EBony Autostart, B7122

MSRP = \$33,010

SAVE \$6,532 Special = \$26,478

2016 Buick *Verano FWD*



2.4L DOHC, 6 speed Automatic, A/C, Tilt, SC, PW, PL, P. Sunroof
AM/FM/XM/CD 7" Touch Radio, Autostart, Park Assist
Dark Sapphire Blue Met/Cashmere, B7442

MSRP = \$26,795

SAVE \$5,101⁵⁴ Special = \$21,603⁴⁶

Note: Special prices include all incentives except GM card earnings if applicable. Special prices are net net. Ask your sales person for details.
Limited time offer



We have a huge selection of vehicles to fit everyone's budget



SEE THESE SALES CONSULTANTS FOR QUALITY CAR BUYS!

Pat Murphy Dealer	Wayne Rodvold General Manager	Rick Moe Sales Manager	Kelly Blomberg Fleet Manager	Anthony Thompson Business Manager	Colt Treffry Social Media Consultant	Dusty Falcon CREDIT Dr
Greg Bowles Sales	Thomas Graham Sales	A.K. Kabir Sales	Tim Sorensen Sales	Lori Christopherson Sales	Cori Fenske Sales	Jimmy Ramirez Sales
						Miguel Quezada Sales

Se Habla Espanol

1801 2nd Ave. W. Williston, ND Call 1-800-888-2927 or 701-577-2927 • Hours: MON.-FRI. 8am to 6pm; SAT. 9am-5pm

www.murphymotors.com

The Gifts From The Heart Committee Would Like To Thank You All

Submitted by Jakkie Waller

As we blow into the New Year of 2016, we have record numbers to announce for the Gifts From The Heart program! 2015 was the largest effort for Richland County providing 424 children with Christmas gifts, assisting 162 families. This includes 135 families receiving Food Baskets.

Sometimes we do not realize that it takes a village from start to finish to round out Christmas in a little county. It all starts with a bunch of big hearts and the Masonic Temple's gracious donation for the use of their building. Then, starting in November, a few elves put up trees at local businesses, decorating them with tags, designed by Elk River Printing, for customers to choose so they can purchase gifts for children in need. Both local newspapers do write ups & photos as we progress through the season. County wide churches announce in their bulletins the need for monetary donations. County wide Financial Institutions start a Mitten Drive. As November zips by there is a whirlwind of enormous donations. Just a quick list of behind the scenes local businesses involved: KB Bubbles donates the use of several rugs, Jaycees donates food staples for a complete Christmas dinner plus this year a \$1,500.00 check as well, Hurley Enterprises donates the Ham and Turkeys for the Food Baskets, Stockman Bank donates the reusable grocery bags as the Food Baskets, the Westside school, staff and students included, have a week long Food Drive, Fairview School K-12 have a week long Food Drive, all three Edward Jones offices and the local chapter of ABATE, each, have a month long Toy Drive and Fairview Fire Department have a Food & Gift Drive. During all of this, there are monetary & gift donations being collected from personal to local businesses to entire church congregations. There are several local businesses that have gift drives or monetary donations from their employees, as well. We even have a local Cub Scout Pack #187 that donates toys purchased with their own money!

The Gifts from The Heart, or Christmas Coalition, as some of us call it by its nickname, was started over 20 years ago by the kindness of a few people's hearts. Today it is much larger in capacity, as it has grown with the county and its needs. The recorded numbers from 1997 were 92 families and 189 children, with no Food Baskets. This program would not be so awesome without the assistance of the above mentioned, nor without the several groups who sort all the food and toys, such as Sidney High Schools BPA, CCR and KEY Club, Fairview Catholic Youth Group, Fairview Student Council and Sidney Jr. High Builder's Club. These kids put in a lot of time and effort the second week of December. There are also quite a few people who come in the week of to donate their time to sort, sort, sort!

The second Saturday of December is the big day, with tables of unwrapped gifts overflowing and bags of food stacked, all from the generosity of a village! From 7:00 a.m. to 2:00 p.m. we assist each family in selecting gifts, books, family games, coats, mittens and hats for their children. Each family receives a very full Food Basket also. To participate in this program there are two rules: the shopper must reside in Richland County and the children being shopped for must live in the shopper's home. Other than that just show up!

Gifts From The Heart is a local program with local volunteers who provide Christmas gifts and food to local families donated by local businesses and local people. If there is anything left over the items are donated back into the community such as: infant blankets

and clothing are donated to the Sunrise Clinic; jump ropes, balls or any sport items are donated to the Boys and Girls Club; puzzles are donated to Crestwood; movies and games are donated to Sidney Library; socks, hats and mittens are donated to the Richland County Shelter and both the Sidney and Fairview Food Banks get donated to prior to the big day after the food bags are heaping full. Generally there is not much leftover, but we try to give back to the community that is so generous to our efforts in providing a Christmas to those in need.

Thank you to each and every person, business and club that gives to this endeavor! If we failed to mention you, we sincerely apologize, but truly appreciate you!

Happy New Year,
Gifts From The Heart Committee

Boys and Girls Club Donor Recognition For Dec. 2015

Submitted by Michelle Seadeek

ABATE Of Montana Lower Yellowstone Chapter ,Dawn Guenzi, Erin Anderson, Ms. Marlys Anvik, Lance Averett, Jeana Barnhart, Melyssa/Randal Bauer, Jolene Baxter, Dr. Brett Bennion, Libby & Randy Berndt, Sara Berndt, Melissa Boyer, Jason Brothen, Carolyn Buxbaum, Harold & Kay Carda, JoAnne & Elmer Christensen, Larry Christensen, Nadine Dietrich, Doorbust'n Portables & Septic Service - Blaine Rogers & Devra Goulart, Sherman Dynneson, Eagle Oil Field Services - Daniel Moore, Mickyla Eide, Erin Ellingson, Peter Erickson, Kimberly Erickson, Tim Fine, Ray Franz, Delores Frison, Elda Gabrielson , Anonymous, Kristine Gifford, Florence Green, Jan Haaland, Melissa Halvorson, Rachel Hampton-Cape, Wilbur W. & Elaine L Hill, Karla Hunter, Russell & Enid Huotari, Henry Jaskot, Jerome Kessler, M.D., Kenyon Johnson, Scott Johnson, Annette Joslin, Verna Kemmis, Knapp Oil Corporation - David Knapp, Karson Kostelecky, Peter Kringen, Mandy Kutzler, Jamie Larson, Shaina Lessor, Stanley M. Lindblom, Veronica Lopez, Shirley Maltese, James Miller, Leo D. Miller, Sandra Miller, Mike Mohl, Anonymous, Netzer Law Firm - Don Netzer, Nuverra Environmental Solutions, Dorothy Paladichuk, Steve & June Paladichuk, Barbara Jean Pepos, PJs Auto Glass - Robyn Johnson, Mark Pritschet, Doug & Tamara Quilling, Robert Rasco, Kerry A. Rasmussen, Reese and Ray's IGA - Emily Hoff, Theodore Reitz, Reynolds Market, Richland Federal Credit Union, Family Trust Ritter, Blaine Rogers, Devra Goulart, Diane Savage, Seitz Insurance Agency - Margaret Seitz, Lauren Shipman, Sidney Sugars, Kenny Simonsen, SM Energy - Jan Tabbert, Smith, Lange and Halley, P.C., Harold Sorensen, State of Montana, Joe Steinbeisser, Jr., Stockman Bank, Svarre Foundation, Shirley Taylor, RonTaylor, Bertha Trudell, Sheri Utgaard, Kenny Vannatta Jr., Jerry Watson, Washington State Boys and Girls Club, Corey Wheeler, Women Of The Moose- Cathy Johnson, Terri Zadow, Dennis & Phyllis Washington Foundation, Amber Langley, Olson Family Foundation, John L. Olson, Anonymous.

UNION GATEWAY AGENCY

*Your Insurance Team
Independently
Representing:*

UGA

BlueCross BlueShield of Montana

Aflac

vsp
Vision care for life

~Life
~Health
~Medicare Supplement
~Medicare Part D
~Group Health
~Vision
~Dental
~Long Term Care

309 2nd St NW
Sidney MT 59270
phone 406-488-4366
fax 406-630-4433

©2011 Vision Service Plan. All rights reserved. VSP and Vision care for life are registered trademarks of Vision Service Plan.

www.uniongatewayinsurance.com

Super Saving Sale

Modulars starting at \$65 per sq. ft.



LOCK IN SALE PRICE, TAKE DELIVERY LATER!
• **WOW!!** Beautiful 2200 Sq. Ft. Modular with all the bells & whistles.

• 1600 sq. ft. modular, 3 bedroom, 2 bath, 6" walls, glamour bath, low-e windows, upgraded cabinets. **ONLY \$113,900**

NEW HOMES of the FUTURE 406-248-1100
www.newhomesthefuture.com

7239 South Frontage Rd., Billings, Montana 59101

Energy Roundup

Williams New API President

Incoming MonDak API President Terry Williams, (left) presents Jim Fehlauer past president, a plaque for his years of service for the organization. Jim was the API president from 2008 through 2015. The MonDak API meets the third Tuesday of each month. Contact Terry Williams for more information. (Photo Courtesy by Lisa Gorder)



API chapters promote fellowship and professional development of their members through the exchange of operational experience, operations oriented meeting programs, and a variety of educational, industry service and community service projects.

These efforts promote a professional and civic minded industry image in chapter communities. The chapters are non-commercial, non-discriminatory, and do not endorse or financially support political parties or candidates. To avoid inadvertent conflicts, the chapters do not independently develop or promote positions on public issues, but often provide forums for discussion of such issues.

S SERVICES, INC.
Oil Field & Industrial Construction

Phone: 406-433-6754
Fax: 406-433-6755

www.slserviceinc.com

2265 S. Central Ave. Sidney, MT 59270
Email: les@slservices.net

Customer Service is Our #1 Priority

BORDER STEEL AND RECYCLING, INC.

Construction Materials • New Steel • Aluminum & Stainless

Brady Smelser	Tim Mulholland	Kelly Moody	Bret Smelser	Ernie Gawryluk	Ken Syme
Sidney	Glendive	Williston	Plentywood		
35002 CR 123	2703 W. Towne St.	13896 W. Front St.	Hwy 16 East		
406-433-7737	1-800-423-5219	1-800-820-5493	406-765-2624		
1-855-810-2995					

Recruiting? We Can Help!



The Roundup

406-433-3306 | info@roundupweb.com

Count on **Tractor & Equipment Co. and T&E The Cat Rental Store**, for all your equipment buying and rental needs. From concrete saws to heavy construction equipment, we offer products from Cat® and other leading brands to meet most jobsite needs.

Lindsay Smith
406-696-0714

T & E CAT Rental

SONDA'S Solutions

Specializing in

FR CLOTHING & EMBROIDERY

406-433-6757 • Fax: 406-433-6755 | Mon-Fri: 6am - 6pm
Closed: Sat & Sun | 2221 S. Central Avenue • Sidney, MT 59270

CHAZNLINE CONSTRUCTION
406-798-7700 • SIDNEY, MT

Oilfield & Pipeline Construction

Phone: 406-798-7700
Fax: 406-798-7710

13524 Hwy 16 • PO Box 215 • Sidney, MT 59270

The Newly Opened Wingate Hotel Provides A Luxury Stay And State-Of-The-Art Amenities

By Meagan Dotson

The Wingate Hotel by Wyndham opened November 17, 2015 at 1500 South Central Ave in Sidney, offering a number of upscale amenities for those looking for a luxurious stay. After opening the Microtel, also by Wyndham, owners began to hear from the community that there was a need for an upscale hotel that would attract upper-economy based clientele such as business executives. This launched the first of three feasibility studies to determine whether or not an upscale property that offered extensive amenities would thrive in the area. "We wanted to be sure that with the changing economy that the need for the property continued to exist," explained Managing Partner Steve Sparks.

With all three studies concluding there was a need, plans began to make the Wingate a reality.

The hotel, with its contemporary design and state-of-the-art features, has a total of seventy-five spacious rooms including

single king beds, double queen beds, and suites; all rooms have a workspace with wireless Internet as well as a hard-wire port and the hotel is ADA compliant. Guests have access to wireless communications throughout the property with a higher bandwidth, a fitness area, spa, guest laundry services, on-site parking, excellent customer service, and a gourmet complimentary breakfast, which offers more than sixty breakfast choices. There is a boardroom and meeting rooms available with moveable walls allowing for anywhere from fifteen to fifty people, depending on the set up.

"Without question the market has changed over the last year," commented Sparks. "The market is more competitive and demand is down which affects occupancy and rates, but we are confident that staying at the Wingate will be a new experience for consumers. This property has raised the bar for hotels in Eastern Montana."

The Wingate is currently offering an Introductory Manager Special, which is 50% off the rack rate, or a second night's stay for free. To take advantage of this great offer, bookings must be made directly with the hotel rather than online and the special is subject to availability. For more information, or to book your own exemplary stay, contact the Wingate at 406-433-3100.

Rooms feature a disk & comfortable chair.



A spacious double room.



The Wingate lobby.



DMC
DETAILING

COMPLETE INTERIOR & EXTERIOR DETAILING
LICENSED & CERTIFIED
CALL FOR AN APPOINTMENT

Open Monday-Friday: 8am - 5pm
Dan: 406-480-5665 • Monica: 406-489-3280 | 205 Jenison Drive • Fairview, MT

COLD WEATHER SALE!

All*
Fall & Winter Clothing
40% off

*Excluding Snow Camo





Mon-Sat: 9am - 6pm • Sun: 10am - 4pm
440 N Central Ave • Sidney, MT
Shops at Fox Run • 406-433-1800



Mon-Sat: 8:30am - 5:30pm
214 S Central Ave • Sidney, MT
406-433-1823



WINGATE
BY WYNDHAM

50% off first night
Or your 2nd night FREE

Offer valid through
phone direct
reservations to the hotel.

433-3100
Available on stays
Now thru 01.31.16

Offer Expires 01-31-2016

DPHHS Encourages Participation In National Drug & Alcohol Facts Week

Submitted by DPHHS

The Montana Department of Public Health and Human Services is encouraging Montana teens to participate in next week's National Drug and Alcohol Facts Week (NDAFW).

Teenagers have joined forces with other teens and scientists across the nation as part of a week-long health observance, organized at the federal level by the National Institute on Drug Abuse and the National Institute on Alcohol Abuse and Alcoholism. The event takes place January 25 through Sunday, January 31.

According to Vicki Turner of the DPHHS Prevention Resource Center, NDAFW caters to the inquisitive minds of teens by giving them a space (virtual or physical) to ask questions about drugs and alcohol and to get scientific answers from experts.

About a third of high school seniors across the country report using an illicit drug sometime in the past year, and more than 10 percent report non-medical use of a narcotic painkiller. While drugs can put a teenager's health and life in jeopardy, many teens are not aware of the risks. "Even for those teens who do not abuse drugs, many have friends or family who do, and they are often looking for ways to help them," Turner said.

In Montana, alcohol remains the number one drug of abuse for youth. The Montana Prevention Needs Assessment (PNA) revealed that 51 percent of 12th graders had used alcohol within the past month, and 23 percent of 12th graders had used marijuana within the last 30 days.

Each of these figures had increased from the previous PNA report. In addition, the PNA covers narcotic prescription drugs, such as Vicodin, OxyContin, Percocet and Codeine, where it was found that 0.8 percent, 3.4 percent, and 3.9 percent of 8th, 10th, and 12th graders respectively had used drugs such as these without a physician's orders in the last 30 days. "We want teens to have the opportunity to learn what science has taught us about drug abuse, alcohol, and addiction," Turner said. "There are so many myths about drugs and alcohol cluttering our popular culture. NDAFW is for teens to get honest answers about drugs so they can make good, informed decisions for themselves and share accurate information with friends."

The website hosts interactive activities, videos and a blog teaching guide. Additionally, there are publications available for download, promotional resources and drug-specific toolkits. People can take the National Drug and Alcohol IQ Challenge or see the latest news and highlights as well as download statistics and infographics.

The annual online live chat held between teens and NIDA scientists is scheduled for January 26th and people may log on now to register for the chat or to register and plan an event.

MNAXLP