



# The Roundup

PRSR STD  
U.S.  
POSTAGE  
PAID  
The Roundup

(406) 433-3306 or 1-800-749-3306  
Fax (406) 433-4114  
e-mail address:  
roundup@esidney.com

Business Office:  
Located at 111 West Main  
Sidney, MT

Mailing Address:  
P.O. Box 1207  
Sidney, MT 59270

Wednesday, February 1, 2012

Volume 37 • Number 50

## Bakken Bock On Tap For Bakken Brew Fest

By Lois Kerr

The Sidney Area Chamber of Commerce and Agriculture will host a new event this year, the Bakken Brew Fest, scheduled for Saturday, March 10 at the Richland

County Fair Event Center. Activities include sampling a variety of specialty brews, and this year one of the featured beers will be Bakken Bock, a unique microbrew dark lager beer produced by

Bayern Brewery, Missoula, and developed specifically with the MonDak region and its Bakken oil resources in mind.

The idea for a specialty brew designed for our region

originated with local businessman Randy Olson, Blue Rock Products and Distributing, Sidney. Olson had a dream and the opportunity arose this past fall to realize his vision. "I've always been a fan of dark beer, and I've thought for a long time that we should have a beer that speaks about what is going on here," Olson remarks. "The beer needed to be tied to the oil boom and it needed to be a dark beer, symbolizing oil. I also thought the name 'Bakken Bock' had a nice ring to it and would fit such a beer."

He adds, "One day Ron Messmer, our beer manager, happened to be on the phone with Bayern Brewery, Missoula. He asked me if I wanted to present them with my idea, and of course, I did."

Olson spoke with Bayern's German brewmaster Jurgen Knoeller. Knoeller agreed to develop a specialty dark beer tailored for the MonDak. Three months later, the finished quality product hit the market. "I had this conversation with Jurgen in October and he had it ready by mid-January," Olson remarks. "Jurgen brewed a dark dopplebock that, in his words, 'is smooth and does not have the rough bite or aftertaste of other dark beers such as stouts or porters. It is a treat after a hard day in the oilfields'."

Olson also points out that Knoeller brewed this beer in strict accordance to the Reinheitsgebot or German Law of Purity.

Olson not only had the idea for this dark lager; he also had a specific label in mind, and Bayern incorporated his ideas and created a label that epitomizes our region. "I wanted some basics on the label, like a pump jack, blue sky, the Badlands and cattle, because that's what we have here," Olson comments. "I wanted this beer to convey what the Bakken is all about. I sent Knoeller's graphic designer my ideas, I proofed the artwork that Chontos Design

drew up, and the rest is history."

At the present time, Bakken Bock is available only in eastern Montana and Billings. This microbrew will be a featured beer at the Bakken Brew Fest, and Olson invites people to try this delicious brew. "This lager is smooth and even people who think they don't like dark beer will like this," Olson confidently predicts. "Bakken Bock is an incredible, awesome beer. I encourage people to look for it at local stores and restaurants, and to give it a try. We at Blue Rock are so thankful that Bayern stepped up to the plate and brewed such a fantastic beer."



## 59<sup>th</sup> National Hard Spring Wheat Show Set For Feb 6-8

By Lois Kerr

This year's 59<sup>th</sup> Annual National Hard Spring Wheat Show will once again offer an outstanding informative event that will provide important, timely information to area Ag producers. This year's educational portion of the show, scheduled for Feb. 7-8 at the Williston Airport International Inn, will offer attendees information and updates on a wide variety of topics, including market information, precision farming, soil health and ecology, cropping practices, and best management practices. People who attend this year's show will have the opportunity to hear three keynote speakers: nationally renowned speaker Danny Klinefelter, James Hoorman and Mike Krueger.

## Man Arrested In Connection With Roadside Body

By Jaimee Green

The body of a man found near Bainville has been identified and one man is in custody.

Charles Bowman Bowen, 46, Florida, has been arrested and charged with negligent homicide for the death of Brian Doyle, 49, also of Florida. Doyle's death was discovered after a call was placed on Jan. 20, to the Roosevelt County Dispatch Center reporting that a male body had been dis-

covered in a ditch off U.S. Highway 2.

Area law enforcement spent several days processing the scene and transported the body to the forensics office for an autopsy.

The Roosevelt County Sheriff's Department, Coroner's Office, Montana Highway Patrol and the Montana Department of Criminal Investigations have worked collaboratively since the investigation began.

Following the investigation it was determined that Doyle died after being ran over by a motor vehicle.

On Jan. 27, an arrest warrant from the 15<sup>th</sup> Judicial District Court of Montana was issued charging Bowen with negligent homicide. He is currently being held in the Williams County Detention Center pending extradition back to Montana.

He is being held on a \$100,000 bond.

Until several weeks ago, Doyle had worked for an oil field maintenance company in North Dakota.

"Area law enforcement are working together to keep people safe. We don't want people to panic or over react. It's unfortunate but when you have an influx of people coming into an area this is one of the issues that have to be dealt with. There is a strong presence of law enforcement and we will deal with these issues," said Freedom Crawford, Roosevelt County Sheriff.



Charles Bowman Bowen

## NEMLMOA Regular Meeting

The next meeting of the Northeast Montana Land and Mineral Owners Association will be held on Tuesday, Feb. 7 in Sidney at the Richland County Extension Office, 1499 North Central Ave.

The meeting will begin at 2 p.m.  
The public is welcome to attend.

## Adult Hunter Safety Sign Ups Feb. 1

Due to recent inquiries there will be an adult hunter safety course offered that will meet the requirements of those individuals interested in obtaining concealed weapons permits.

Sign up is Feb. 1 in the Sidney Library basement at 7 p.m. The class schedule will be set at that time contingent on the number of applicants.

If you have any questions please contact Greg Mohr 433-2815 (day) 488-1166 (evening) or Ron Sorenson 488-7664 (evening).

## Authorities Repeat Request In Search For Missing Teacher

Authorities are repeating a request for landowners in eastern Montana and western North Dakota to search their properties for signs of missing Sidney teacher and alleged kidnapping victim Sherry Arnold.

Arnold disappeared Jan. 7 from Sidney and is presumed dead. Her body has not been recovered.

The FBI is asking property owners to check for disturbed soil and matted grass on vacant farmsteads or along shelter belts, which are lines of trees that protect farmland from wind. The agency says Arnold's body may be buried in a shelter belt with mature or rotted trees.

Two men charged in Montana with aggravated kidnapping in the case are being held in Williston. Extradition hearings are scheduled for Feb. 14.

The men, Lester Waters Jr., 47, and Michael Spell, 22, both of Parachute, CO, have been in the Williams County jail in Williston since Jan. 13 and are fighting extradition to Montana. They face charges of aggravated kidnapping, which carries a maximum sentence of death in that state.

According to court records, the two men left western Colorado less than two days before Arnold disappeared. Both have criminal records.

Property owners are advised not to put themselves at risk. Property owners who discover something unusual are asked not to disturb the site and are asked to call 701-774-9191.



# Einer & Izzetta Jensen



were married  
**Feb. 21, 1942**  
They are celebrating  
**70 years**  
together!

If you wish to send greetings,  
their address is:  
Mr & Mrs. Einer Jensen  
10936 E. Apache Trail Sp. 63  
Apache Junction, AZ 85120



## Jaci's Special!

Crest Chadwick 2280 sq. ft.

**\$143,306**



• 32x76 • 4 Bedrooms/3 Bath • Living Room  
• Family Room • Utility Room On End • Jack & Jill Bedrooms

**Iseman Homes** 2308 W. Front St. • Williston, ND 58801  
Since 1920 **701-572-2590**



# Montana Agate Museum & Sales Gallery

## Grand Opening

Wednesday-Saturday  
Feb. 1-4

**Demonstrations**  
**Register to Win Cut Stone**



**Say "I love you" with jewelry**

**Yellowstone & AGATE SILVER** **20% off**  
storewide now thru Valentine's Day

# BETANIA

## Ristorante Italiano

### Make Reservations Now For Valentine's Day

All businesses In the Yellowstone Marketplace Downtown Sidney 433-7799

# Sidney Small Business Owner Fred Lake Announces Run for State Senate

## Lake lays out a vision of responsible growth, job creation and quality education

Fred Lake has announced his candidacy for the State Senate District 19 seat currently held by Sen. Don Steinbeisser. The Senate District includes portions of Richland, Dawson and Wibaux counties.

"I want to make sure Eastern Montana's growth continues in a responsible way, and ensure that our communities remain viable," said Lake. "The growth we're experiencing in Eastern Montana should not be boom and bust. In the legislature, I will help create diversified business opportunities and jobs, so that our young people will have the opportunity to stay within the region."

Fred currently operates the M&M Cafe in Sidney for his parents, Martin and Marilyn Lake, and has two sons, Vaun and Weston.

"As a small business owner, I understand the importance of a well-educated workforce," continued Lake. "That's why I will work with local educators to increase and further develop the educational opportunities within the region."

Lake is active in the community as a member of Richland Economic Development, as well as the Sidney Area Chamber of Commerce and Agriculture, where he serves as chairman of the Sports and Recreation committee. He is also chairman of the community action group for housing in Richland County.

"I will work together with both sides of the aisle to keep the Oil Revenue Funds utilized in the impacted regions of Montana," added Lake. "Montana has had a variety of natural resource development throughout the state and a precedent is already in place to determine how that money is distributed. The oil revenue from Eastern Montana should stay in our communities to develop our infrastructure for the long term."

Fred was born in Sidney and raised on a farm south of Lambert. He graduated from Lambert High School and Montana State University. While at MSU, he was commissioned an Air Force Officer through the Reserve Officer Training Corp (ROTC)



**Fred Lake**  
and stationed at Buckley AFB in Aurora, CO. Capt. Lake became an instructor at the Air Force Undergraduate Space Training facility, Vandenberg AFB, California. He earned a Master's Degree in Telecommunications Management while working for Qwest Communications through Webster University. Fred will be campaigning throughout the year leading up to the election. He hopes to meet with most of the voters in the district face-to-face in the coming months. Any comments, questions or support can be sent to Fred Lake for State Senate Campaign, PO Box 120, Lambert, MT 59243 or FredLake4Senate@yahoo.com.

## Rau School Students Of The Quarter

Each quarter, Rau Elementary School chooses a student or students who best demonstrate the qualities we value.

This quarter, Rau School has chosen three exemplary students. A.J. Fox, son of Jamison and Lisa Fox; Christopher Olson, son of Andy

and Vanessa Olson; and Benjamin Stevens, son of Bart and Sharon Stevens.

A.J., Chris and Ben are attributed with having a positive attitude, setting a good example, and working up to their potential. They are honest, polite and respectful to their peers and the school

staff. Their excellent work habits, helpfulness and cheerful attitudes are an asset to our classroom and school. We are pleased to present them with this award. Keep up the good work!



Ben Stevens



Chris Olson



A.J. Fox

## Spring Hunter Safety Schedule

Sign-up for the spring 2012 hunter safety class is Wednesday, Feb. 1 at 6 p.m. in the Sidney Library basement.

All students 12 years of age or older or that will turn 12 years old during the coming hunting season may sign up. A parent or legal guardian must accompany the student at the sign-up as both the student and parent or guardian have to sign the application. Textbooks will be handed out with homework assignments to be done prior to the first class. Please bring a pen to the sign-up. The class schedule is Feb. 6-9 from 6-9 p.m. with the test and graduation on Feb. 10.

Due to problems in the past there will be no early or late sign-ups. If you have any questions please contact Greg Mohr, 433-2815 (day) and 488-1166 (evening); Ron Sorenson, 488-7664 (evening); Tom Lorenz, 482-2536.

## Sidney Chamber Announces 2011 Award Winners

The Sidney Area Chamber of Commerce and Agriculture had a great gathering for their first banquet in the Richland County Fairgrounds Event Center. After a prime rib dinner by Leroy's Catering, and reports by the Chamber leadership, Rocky Erickson, Northern News Network sports broadcaster, entertained with stories on unique Montana athletes.

The evening then concluded with Chamber awards. Receiving awards were: Agriculture award, sponsored by Ag Roundup, to Richland County Commissioners; Educator of the Year, sponsored by DTF Educational Consulting to Yvonne Gebhardt, Sidney High School; Entrepreneur award, sponsored by Richland Federal Credit Union, to Sunny's Family Restaurant; Horizon award, sponsored by Sidney Health Center, to Rau DeSigns; and The Sunrise Spirit award, sponsored by Sidney Herald, to B&B Builders.

Outgoing President David Seitz received the Past-President's plaque sponsored by Sidney Country Club. Leading the Chamber in 2012 is Cami Skinner, Wells Fargo Bank.





**Pamper Her This Valentine's Day**

**Package of 2 Treatments \$95<sup>00</sup>**  
**Package of 3 Treatments \$150<sup>00</sup>**  
**Call for Details**

**Gift Certificates**  
*for any product or service*

• Body Wraps • Facials  
 • Jane Iredale Mineral Makeup  
 • Massage by Kim Schlothauer



*An English Touch By Janet Cook*

www.anenglishtouch.com • 205 N. Central • Sidney, MT • 406-433-1430

## Foundation For Community Care Board Of Directors Helps To Ensure Quality Health Care

By Staci Miller

It takes the dedication of 17 local volunteers to lead the Foundation for Community Care; we are pleased to welcome Jeff Aisenbrey, Lorilee Norby and Brian Milne as our newest board of directors. Larry Tveit Jr. (chair), Richard Iversen (vice-chair), Dwight Thiessen (treasurer), Libby Berndt, Margaret Bradley, John Dynneson, Yvette Lien, Michael McCollum, David

McMillen, David Seitz, Mildred Shields, Larry Simonsen, Jim Steinbeisser and Mark Tombre comprise the other volunteer members of the board.

The continuance of quality healthcare in Richland County and the surrounding area is the heart of the Foundation for Community Care. As a not for profit, 501(c)(3) organization, 100% of all donations stay right here at home!

The Foundation for Community Care offers those who care about our community a way to make a difference to the future of health care by making tax deductible contributions of cash, stocks, bonds, real estate and life insurance or by including the Foundation in your will or trust. In 2011, \$236,713.98 was granted to area organizations for health care resources. Your donations help students pursuing an education in a health care

related field through the scholarship program as well as helping patients of Sidney Health Center offset travel expenses while dealing with medical emergencies. The Foundation for Community Care manages more than 19 specific departments where gifts can be designated, the most recent being Phase II of the Cancer Care Center.

Our Community – Our Health – Our Future relies on volunteerism. Thank you to the past and present board of directors for your dedication to the future of healthcare in our community.



**COOKS ON MAIN**  
*for the everyday chef*

**Warm Up!**

**15% off All Warm Beverages!**

**Bulk Coffee**

**Mulling Spices**

**Hot Chocolate**

**Apple Cider Mixes**

**Excludes All K-Cups**

**Open Monday - Saturday**  
**9:00 a.m.-6:00 p.m.**  
**224 Main Street • Williston ND**  
**701-572-COOK (2665) • (F) 701-572-2666**

## Wiggin Joins Stockman Bank As Loan Officer

Stasia Wiggin has recently joined Stockman Bank as a loan officer. Her responsibilities include developing and managing new and existing commercial and consumer loan relationships, as well as assisting clients with their lending needs.

Wiggin brings over 10 years of banking experience to the position, which includes indirect banking, credit analysis, real estate lending, consumer lending and loan processing.

Born and raised in the Flathead Valley, Wiggin is a 1998 graduate of Flathead High School. In 2002, she graduated from Montana State University with a Bach-

elor of Science degree in marketing, and in 2005, she graduated with a second Bachelor of Science degree in finance with a minor in economics. In her spare time, Wiggin enjoys skiing, tennis, scrabble and being a loyal Bobcat fan.

"We are very excited about the addition of Stasia to our office. Her education in finance and previous banking experience will be a great asset to our branch," comments Garth Kallevig, president of Stockman Bank, Sidney.

Stockman Bank, a Montana owned and operated company, was established in 1953 by Miles City rancher

and businessman Wm. Nefsy. There are 24 full-service locations statewide. To learn more visit [www.stockmanbank.com](http://www.stockmanbank.com).



Stasia Wiggin

## Introducing Our Karaoke Competition!!

Every Friday night beginning Jan. 6 • 9 p.m.



Top singer each night wins \$100. Top winners invited to come back to win 3 days & 3 nights in Las Vegas (airfare included)

## HI-WAY LOUNGE & GRILL

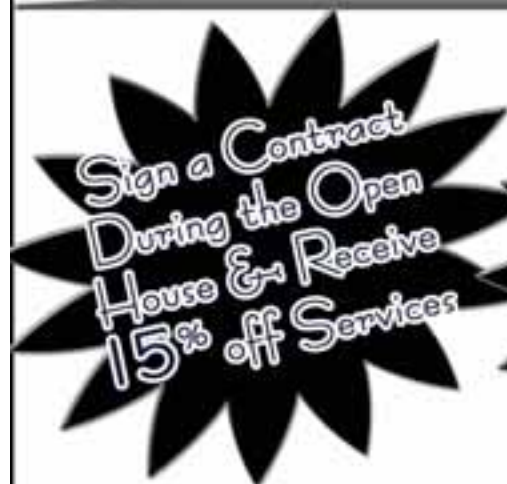
701-828-3100 • Main Street • Alexander, ND

## Grand Opening

Wednesday - Saturday • February 1-4

In The Yellowstone Marketplace

Door Prizes • Refreshments • Hors D'Oeuvres



**Custom Compliance & Consulting**

Open Mon-Fri • 8-5  
 102 N Central Ave • Pod 7 • Sidney, MT  
 Contact Marilyn or Melissa  
 406-433-8230 • 406-433-8231

**BIG SKY EMBROIDERY POST**

406.433.7679 • 102 W. Central Ave. • Sidney  
 Hours: Mon.-Fri. • 10 a.m. - 5 p.m.

## POKER

## TOURNAMENT

**Saturday, February 4, 2012**

**Registration - 10:30 am MST**

**Tournament Begins - 11:00 am MST**

**GRASSY BUTTE**

**COMMUNITY HALL**

**\$100 Buy In ~ \$30 Registration Fee**

**FREE LUNCH ~ FREE BEER**

**Fireman's Fun Night to Follow!**

**Drawings for Cash Prizes ~ Live Games**





**REAL ESTATE FINANCING**  
**For Home Purchases & Refinancing**  
Stop in today and see Janet Sergent in Sidney or Laurie Pearson in Culbertson.

**Janet Sergent**  
Real Estate  
Loan Officer



**Laurie Pearson**  
Culbertson  
Branch Mgr.



**Richland**  
FEDERAL CREDIT UNION

201 West Holly St. • Sidney, MT (406) 482-2704  
18 East 2nd St. • Culbertson, MT (406) 787-5890

**NCUA**


www.richlandfcu.com

**For all your Farm/Ranch, Recreational, Residential, and Commercial needs.**

**Alan Seigfreid**  
**Amanda Seigfreid**


Jim & Janice Knudsen 120 2<sup>nd</sup> St. N.E. • Sidney Mt. 59270  
Broker/Owners (O) 406-433-3010 • (C) 406-489-3010  
email: [alans@midrivers.com](mailto:alans@midrivers.com)  
**Website: [www.missouririverrealty.com](http://www.missouririverrealty.com)**





**Yellowstone Chiropractic Clinic**  
(406) 433-4757 222 2nd. Ave. SW  
1-866-433-4757 Sidney, MT 59270

**Dr Ryan Laqua**  
Chiropractic Physician



• Sports Injuries • DOT Physicals  
• Personal Injuries & Pain Conditions



**Security Cameras**  
Indoor/Outdoor • Residential/Commercial/Rural

**Protect your property!**  
BitsNpcs offers top quality cameras and a variety of packages from basic to watching your cameras live on the internet or your cell phone.  
Call 406-989-1206  
now to schedule your onsite consultation

**Thank You...**

The family of Jackie Dropps would like to thank all those who have been involved in her care these past few years. Thank you so much to Pastor Neil Lindorff for all your visits & prayers and the wonderful service, also to the ladies of Peoples Congregational Church for the wonderful luncheon. Words cannot express how much all of the prayers, phone calls, visits, food & flowers meant to us. We would also like to thank Fulkerson Funeral Home for all their compassion & caring ways.

Sincerely,  
The Family of Jackie Dropps

**The Roundup**

*and*

**AG ROUNDUP**

are available in Williston at

- Hedderich's
- Simonson's
- Scenic Sports & Liquor
- Herman Oil Convenience Store
- M & H Convenience Store

**Pick up your FREE copy today!**

# Barley Updates On Feb. 14 In Conrad, Feb. 23 In Sidney

MSU News Service Montana State University Extension is sponsoring two regional barley update meetings. They will be held on Tuesday, Feb. 14, at the Pondera Shooting Sports Club in Conrad and on Thursday, Feb. 23, at the Northern Plains Ag Research Conference Center in Sidney.

Organized by Montana State University Extension and the Institute of Barley and Malt Sciences, the workshops will feature speakers from Montana State University, North Dakota State University, the USDA Risk Management Agency, the National Barley Growers Association, the Northern Broadcasting News System and the malting and brewing industry. Topics will include barley variety updates, insurance information, dryland and irrigated insect pest and disease control, barley storage and drying, and emerging barley issues.

The Conrad workshop begins at 9:30 a.m., with registration at 9 a.m. The Sidney

workshop begins at 10 a.m., with registration at 9:30 a.m.

Sponsors include the American Malting Barley Association, Inc., Anheuser-Busch, Inc., Cargill Malt, Control Crop Consulting, the Institute of Barley and Malt Sciences, Malteurop North America, Inc., MillerCoors, Montana State University Extension, Montana Wheat and Barley Committee, Montana Grain Growers Association, North Dakota Barley Council, North Dakota Grain Growers Association, North Dakota State University Extension, Rahr Malting Company.

Lunch and a social hour are free, but pre-registration is requested. To pre-register, contact Dan Picard 4 0 6 - 2 7 1 - 4 0 5 4 , [dpicard@montana.edu](mailto:dpicard@montana.edu) for the Conrad workshop or Tim Fine 406-433-1206, [tfine@montana.edu](mailto:tfine@montana.edu) for the Sidney workshop. You may also contact Karen Hertsgaard 701-231-5384, [karen.hertsgaard@ndsu.edu](mailto:karen.hertsgaard@ndsu.edu) to register for either workshop.

## Marshall Irigoin, 85, Brockton, MT

Mass of the Christian Burial for Marshall Irigoin, 85, Brockton, MT, is at 10 a.m. Wednesday, Feb. 1, 2012, at St. Matthew's Catholic Church, Sidney, with Father Jim O'Neil as presider.

Wake services were at 6 p.m., Tuesday evening, Jan. 31, 2012, at the Fulkerson Memorial Chapel.

Interment is in the Sidney Cemetery, Sidney, MT under the direction of the Fulkerson Funeral Home, Sidney.

Remembrances and condolences may be shared with the family at [www.fulkersons.com](http://www.fulkersons.com).

Marshall died on Saturday evening, Jan. 28, 2012, at the Sidney Health Center Extended Care Facility.

## Robert "Bud" Atchison, 92, Sidney, MT

Funeral services for Robert "Bud" Atchison, 92, Sidney, MT, are at 2 p.m., Thursday, Feb. 2, 2012, at the Fulkerson Memorial Chapel with Pastor George Karres, Pella Lutheran Church, Sidney, officiating.

Interment will be in the Sidney Cemetery, Sidney, under the direction of the Fulkerson Funeral Home, Sidney.

Remembrances and condolences may be shared with the family at [www.fulkersons.com](http://www.fulkersons.com).

Bud died on Friday, Jan. 27, 2012, at the Sidney Health Center Extended Care Facility.

*Save The Date!*

**Kaila Foss**  
Daughter of Jerry & Judy Foss, Sidney

**&**

**Ryan Forbes**  
Son of Jim & Therese Forbes, Sidney

**&**

Lynette & Reynum Johnston, Watford City

Invite you to their wedding

**Saturday, February 18 • 5:30 p.m.**  
**Richland County Event Center**  
Reception & Dance to Follow



# STATISTICS

## Lake Water Level Reports

	Fort Peck	Sakakawea
Current Elevation .....	2234.8	1838.3
Last Week's Elev. ....	2235.1	1839.1
One Year Ago .....	2235.2	1840.0
Release For Day (C.F.S.) .....	13,000	22,000

## Watford City Weather Data

Source: North Dakota Agricultural Weather Network

Date	High	Low	Precip.
Jan. 23 .....	29	3	-0-
Jan. 24 .....	35	1	-0-
Jan. 25 .....	37	20	-0-
Jan. 26 .....	51	28	.01
Jan. 27 .....	43	24	.01
Jan. 28 .....	32	19	-0-
Jan. 29 .....	30	10	-0-

## Sidney Weather Data

Source: MSU Eastern Agricultural Research Center

Date	High	Low	Precip.
Jan. 23 .....	33	1	-0-
Jan. 24 .....	39	18	-0-
Jan. 25 .....	52	19	-0-
Jan. 26 .....	49	25	-0-
Jan. 27 .....	44	26	-0-
Jan. 28 .....	33	18	-0-
Jan. 29 .....	49	10	-0-
Average YTD Precipitation .....			.35
2012 YTD Precipitation .....			.10

## SEND US YOUR EVENTS!

THE ROUNDUP: PO Box 1207, 111 West Main, Sidney, MT 59270  
406-433-3306, Fax: 406-433-4114  
Email: [classads@esidney.com](mailto:classads@esidney.com)

## Richland County

Events in Sidney unless otherwise listed. MT Zone.

**Wed., Feb. 1**  
**Noon** — American Beef Battalion Fundraiser, Sidney Livestock.  
**6 p.m.** — Spring 2012 Hunter Safety Class sign-up, Sidney Library basement.  
**7 p.m.** — Gambler's Anonymous, Millers' Corner back room.  
**7 p.m.** — Adult Hunter Safety Course Sign-up, Sidney Library basement.

**Thurs., Feb. 2**  
**5 p.m.** — TOPS, Crestwood NW entrance, Weigh-ins 5-5:30 p.m., meeting 5:30-6 p.m.  
**6:30 p.m.** — Pinochle, Moose Lodge.  
**8 p.m.** — NA meeting, Millers' Corner banquet room.

**Sat., Feb. 4**  
**9 a.m. & 7 p.m.** — AA meeting, Trinity Lutheran Church Education bldg., 214 S. Lincoln.

**Sun., Feb. 5**  
**7 p.m.** — AA meeting, Trinity Lutheran Church Education bldg., 214 S. Lincoln.

**Mon., Feb. 6**  
**12 p.m.** — AA meeting, Trinity Lutheran Church education bldg., 214 S. Lincoln.  
**6:45 p.m.** — Bingo, St. Matthew's Parish Center multi purpose room.

**Tues., Feb. 7**  
**2 p.m.** — NEMLMOA (Northeast MT Land & Mineral Owners Association), Richland County Extension Office.  
**7 p.m.** — AA meeting, Trinity Lutheran Church education bldg.

## McKenzie County

Events in Watford City unless otherwise listed. CST Zone.

**Wed., Feb. 1**  
**8 p.m.** — Al-Anon, Sanford Room, McKenzie Co. Public Library.

**Thurs., Feb. 2**  
**Noon-1 p.m.** — Active Parenting Now, Courthouse.  
**8 p.m.** — AA Group, Northern Pump & Compression. Call 770-3603 or 770-2675 for directions or ride.

**Mon., Feb. 6**  
**6-9 p.m.** — Active Parenting for Step Families, Courthouse.

**Tues., Feb. 7**  
**5-7 p.m.** — McKenzie Co. Food Pantry, First Lutheran Church.

See all monthly events at a glance on our online calendar [w.roundupweb.com](http://w.roundupweb.com).

**Millers' Corner**  
Convenience Store, Deli & Catering



**Lunch Plate Specials**  
Petite Plate \$5.25  
Regular Plate \$6.95

**Wednesday February 1**  
**Oriental Beef Stir Fry**

**Thursday February 2**  
**Beef Enchilada & TexMex Rice**

**Friday February 3**  
**BBQ Ribs & Scalloped Potatoes**

**Monday February 6**  
**Sloppy Joe Bistro Mac & Cheese**

**Tuesday February 7**  
**German Meatballs Potatoes & Gravy**

**Grill is On Til 6 p.m. Mon.-Fri.**

406-433-4041  
2201 West Holly, Sidney



# Open House Held For Bergman

On Friday, Jan. 28 the Eastern Agricultural Research Center (EARC) staff held an open house for Dr. Jerry Bergman, who has retired from the Montana State University system to accept the position as NDSU Williston Research and Extension Center director. Bergman served 38 years as agronomist, plant breeder and director of the EARC, Sidney. The EARC staff held a luncheon for staff and former staff, and then opened the doors to the public to come and wish Bergman well in his new venture.

During his tenure here in Montana, Bergman has proven himself a true advocate for agriculture. He has worked tirelessly to promote agriculture and ag research in the MonDak and his extraordinary vision has allowed him to look ahead into the coming years to project and plan for future needs within the ag community.

His efforts as an agronomist and plant breeder have provided 14 new varieties of safflower for regional growers, the development of high oleic and high linoleic safflower oils, and new markets for safflower and safflower products. His vision for a new facility for the EARC and the Extension service also materialized this year.

To thank him in a small way for his efforts, the EARC staff presented Bergman with a metal sign. The Richland Economic Development Board also presented Bergman with a plaque to honor and thank him for his 15 years of service on

the Richland Economic Development Board.

Although he is now working for North Dakota, Bergman plans to continue his efforts to increase funding for ag research centers in Montana and he intends to continue to work for the expansion of ag research in the MonDak region.



As a token of appreciation for all he has done, during the luncheon in Bergman's honor EARC staff members Mary Schaff and Becky Garza presented Bonnie and Jerry Bergman with a metal sign.

# Martineau Joins Halvorson For Representative Campaign; Accepts Treasurer's Duties

The Halvorson for Representative Campaign has announced that long-time Sidney resident Paul R. Martineau has agreed to take on the duties of campaign treasurer.

The announcement was made by David Halvorson, who seeks election to the Montana Legislature from House District 37.

Speaking of his campaign treasurer, the Republican

candidate said, "Paul will be a great asset to the campaign. Anyone acquainted with him knows that he is a hard worker, that he has a keen mind and a unique wit, and that he is a steadfast friend. Most important to the election campaign, whenever Paul takes on a task, he does it with attention to detail. He is meticulous and thorough."

Martineau said of Halvorson, "Since 1995, David has gained a great deal of experience as a member of the legislative staff. The legislature employed him in various capacities during eight regular sessions and one special session. David has established working relationships with members of the Montana House and Senate. He knows the people and he knows the process. This will enable him to 'hit the ground running' when Legislature convenes next year in Helena. Don't be surprised if he is chosen for a leadership position during his freshman term."

After making his intention to run for office known in December 2011, Halvorson made it official on Jan. 12. That was the first day the Montana Secretary of State accepted candidate filings for the 2012 election cycle. He completed the form and paid the filing fee that morning. His name will appear on the June 5<sup>th</sup> Republican primary ballot.

Halvorson is a Sidney native. He has a record of community service, both as a local radio broadcaster and in various volunteer organizations.

The Halvorson for Representative Campaign can be contacted by telephone at 406-482-2568, by writing to PO Box 1629, Sidney, MT 59270 or by email at dphalvorson4hd37@gmail.com.

# Fundraiser Set For All American Beef Battalion Feb. 1

By Lois Kerr

The MonDak Area Stockgrowers Association, in cooperation with the Yellowstone Livestock Company, 720 10<sup>th</sup> Ave. SE, Sidney, will host a fundraising event for the All American Beef Battalion, an organization dedicated to supporting our troops fighting the global war on terror. The fundraiser, scheduled for noon on Wednesday, Feb. 1 at the Yellowstone Livestock, will consist of auctioning off a calf to the highest bidder, then auctioning off that calf again and again and again for as many times as needed until everyone present who wishes to donate to the cause will have had ample opportunity to do so.

For more information, you may call Dynneson at 406-489-1994, or 406-798-3661. You may also visit the web site at [www.steaksfortroops.com](http://www.steaksfortroops.com).

♥♥

Valentine's Day

SPECIALS

Tuesday., Feb. 14

Prime Rib or  
Charbroiled Herb Shrimp  
with dessert

Reservations Recommended!

M&M Cafe

Restaurant • Catering • Special Events

Open: Mon.-Sat. 5 a.m.-9 p.m., Sun. 5 a.m.-8 p.m.

1721 S. Central Ave. • Sidney

406-433-1714

Sweet Special!

All Jewelry 1/2 Price

Feb. 1 thru 14

We need to make room for  
our new spring arrivals!

Gift Certificates for Services  
& Products May Be  
Ordered By Phone

Call ahead for your  
Private Jewelry Showing

Body Bliss  
MASSAGE

Cammi Seader

Certified Integrative Reflexologist  
•NCTMB •LMT •AAS Degree

406-433-BODY (26379)

Super Bowl Specials!

Jack Daniels

10% off

Bud Light

24 pk. cans \$21<sup>00</sup> + tax

LONG X BOTTLE SHOP

9 a.m.-9 p.m.  
Mon-Sat  
1-5 p.m. Sun

701-444-3335  
Hwy. 85  
Watford City, ND

(Located in the Long X Trading Post)

Join Us for our  
Super Bowl Party  
Sunday, Feb. 4

We will be  
serving  
FREE FOOD  
from 3 p.m. til gone!  
PLUS Door  
Prizes!

CITY BAR

701-444-4287  
117 Main St. • Watford City, ND

Black & White  
Diamonds  
For Valentines Day

Earrings \$299

Necklace \$299

Necklace \$349

Necklace \$199

Ring \$379

RITTER BROTHERS  
DIAMOND CUTTERS

319 Main Street • Williston, ND • 701-572-2051

22 Plasma TVs  
for NBA League Pass!  
Sounddog Speakers  
right at your table!

WEDNESDAYS  
LARGE PIZZA &  
PAIL OF BEER \$19<sup>99</sup>

FRIDAYS  
18 WINGS &  
PAIL OF BEER \$19<sup>99</sup>

We will be holding our  
Annual Private Super Bowl Party  
for those lucky people who won  
invites throughout the season

QUICK STADIUM FOODS  
AVAILABLE TIL CLOSE  
EVERY NIGHT!

The Casino will be Open to the Public with  
New Vegas  
Line Games!

"Time Out" \$1<sup>00</sup> off  
4-6 p.m.  
Daily All Beers

Winners  
PUB  
SPORTS  
BAR

Open  
8am-2am  
Daily

& Casino  
804 S. Central Ave

Free Snacks  
After Eagle Basketball Friday & Saturday!



HAVE A  
SUPERTIME  
WITH US

Drink  
Specials!

Beer  
Specials!

Special Prizes to be  
given away!  
(Must be present to win.)

PRIZES!

FOOD!

D& M's Office

701-842-6132 • 115 Main • Watford City, ND

McKenzie County Area

Food Pantry

Free food assistance for you and your family

All income eligible McKenzie County residents welcome!

No Referral necessary  
minimal personal information requested  
No ID's required

February 7, 2012  
5 pm to 7 pm

Open the 1st Tuesday evening of each  
month and the 3rd Tuesday afternoon of  
each month from 2 pm to 4 pm

Located in the lower level of  
First Lutheran Church, 212 2nd Avenue  
NW, in Watford City

For more information or to set up an appoint-  
ment to visit the pantry call 701-444-3451.

Pantry includes  
new shipment of a  
wide variety of:  
• frozen meats  
• canned goods  
• personal care  
items!

TOP  
100  
CRITICAL ACCESS HOSPITAL

Live Life Well in 2012

Thursday  
March 15

Community  
HEALTH FAIR

Stop by Richland County Fair Event  
Center between 8:00 AM - 4:00 PM  
to get **FREE** health screenings  
and visit more than 40 community  
booths on various health topics!

SATURDAY  
Walk-In Clinic

OPEN 9AM- 12Noon

Suite 104

No Advance  
Appointments

PHONE:  
488-2510  
TO REGISTER

Childbirth Class  
Schedule:  
9:00 AM - 4:00 PM  
Sidney Health Center  
Classroom

February • May  
August • November

SIDNEY  
HEALTH  
CENTER

Exceptional Care for Life

216 14th Ave SW • Sidney, MT  
Phone 406.488.2100

Saturday  
February 4

Childbirth Class

Childbirth instructors, Lisa Verschoot,  
RN and Joyce Schulz, RN will take you  
through the childbirth process answering  
any questions and help to prepare you for  
the best birth experience possible. Please  
call the Clinic Receptionist at 488-2510  
to reserve your spot. The class is free of  
charge; however, donations up to \$25 are  
gladly accepted to cover expenses.

Visit us online: [www.sidneyhealth.org](http://www.sidneyhealth.org)

Upcoming Events • Newborns • News • Online Bill Pay & More

# Dr. Dirt

## Photographs & Memories

By Jerome Kessler

It has been 40 years since singer and songwriter Jim Croce died in an airplane crash. His music inspired me in the 1970s; and some of his words have recently come back to haunt me. "Photographs and memories," Croce sings, "Christmas cards you sent to me . . . all that I have are these to remember you."

I've been doing a lot of reminiscing lately. That's because I recently put together a "best of" DVD of our family videotapes. Working on this compilation has been a bitter-sweet experience. On Christmas Eve we looked at a tape I made some 20 years ago, when the kids were all preschoolers. The boys were cute beyond belief. (See pictures.) My sons are all in college now. They were more interested in seeing what they looked like in 1991 than they were in opening presents. Perhaps they have grown out of the need to celebrate Christmas in a merely commercial manner.

My sons are not boys anymore. They are young adults. Someday they will be independent, but the fact of the matter is that my sons still need me to help them with car maintenance, college financing, grad school applications, etc. True independence should be their goal, but for now that is just a light at the end of the tunnel. And that's how it is with families: We rush through the all too busy childhood years; we tolerate the teenage years; we try our best to help our kids get through the college years; and then we gradually morph into the grandparent phase of life.

Many of you have seen your children get married. You have experienced the joy of your kids having children of their own. Becoming a grandparent is no longer a dreaded phase in life. I look forward to those future happenings. My sons are delayed in this regard, however. That's okay. I want them to finish their schooling and get a decent job before they take on the added responsibility of becoming a spouse and parent.

It's been fun to look back at how things were. Twenty years have passed in the blink of an eye. Another twenty years will pass before we know it. Someday these too will be "the good old days". We'll look at our photographs with fond memories. Some of us, however, will no longer be around to reminisce. There will be empty seats at our dinner tables. As Jim Croce's song puts it, we will be glad to have our memorabilia . . .

"Photographs and memories, all the love you gave to me, somehow it just can't be true, that's all I've left of you."

I end this week's column with a bit of philosophy. Enjoy your memories. Do not regret the past – nor foolishly try to relive it. Cherish your loved ones. It's a sad fact that they won't always be with us. Anticipate the future with optimism. Make plans but don't be disappointed if they don't come to

fruition. It is up to us to make the effort, after all, but we must leave the results up to God. And let's make the most of each day, so that this time in our lives is something that we can forever relish.

\*\*\*  
"Yesterday is but a dream; tomorrow is only a vision; but today, well lived, makes every yesterday a dream of happiness, and every tomorrow a vision of hope. Look well, therefore, to this day, for it is life, the very life of life." (a Sanskrit Proverb)

Kessler family, 1991

Kessler boys with Grandma, 1993

Coffee with Mom, 2008

Homes and Lots  
Available Now  
In Sidney, Fairview & Watford City

BEDROOM 2

BATH 2

BEDROOM 1

UTILITY

KITCHEN

BEDROOM 3

BATH 1

LIVING ROOM

Tape & Texture • Appliances  
\$84,900

Single & Double Wide Homes  
At Competitive Prices!

Contact Kerry, Scott or Jill  
Hathaway Homes  
OF NORTH DAKOTA  
1506 2nd St. W., Williston • 701-572-1526



# Come Visit Our New Showroom!



**FULL SERVICE PARTS DEPARTMENT!**



**SUBZERO SOLUTIONS RV**  
MADE FOR THE AREA!

Home of Sub Zero Solutions  
321 Gate Ave. • Williston, ND • 701.572.2250  
coatesrvnorthdakota.com

**CLOSEOUT ON ALL TRUE NORTH® ICE LODGES!**  
SEVERAL MODELS IN STOCK



**COATESRV**  
SINCE 1938  
**WILLISTON**

# MonDak Pulse Production Day In Wolf Point Feb. 15

By Shelley Mills, Valley County Extension Agent

Montana State University Extension and North Dakota State University are collaborating to present MonDak Pulse Day on Feb. 15 at the Elks Club, Wolf Point. More than 12 years ago, Extension personnel in both Montana and North Dakota saw a need to address agronomic questions related to the rising amount of pulse production (peas, chickpeas and lentils) being done in Western North Dakota and Eastern Montana. Today this area, known as the MonDak area, produces 88% of the peas, 86% of lentils and 18% of chickpeas grown in the United States. The annual MonDak Pulse Day is the result of that shared effort. The workshop strives to bring together producers, researchers and industry in an atmosphere of collaboration and commonality. Montana is proud to be hosting the 12th occurrence of this highly successful program. Registration begins at 8:30 a.m. (MST) at the Elks Club, Wolf Point. Lunch, sponsored by Northern Pulse Growers and educational materials are included in the \$20 fee. Three private applicator credits and five commercial/governmental credits in the Dealer, Demonstration and Research, Ag Plant Pest, Right of Way, Regulatory Weed and Aerial categories, are being offered for attending the program.

The meeting begins with the top three challenges in pulse production. Brian Jenks, NDSU North Central Research Extension Center (NCREC) weed scientist, will start off the program with a discussion of pulse production's number one challenge- weed management; followed by the number two challenge - disease issues and management presented by Michael Wunsch, NDSU plant pathologist, at the Carrington Research Center. Pulse productions third challenge; pest problems will be presented by Dr. Daniel Waldstein, NDSU Area Extension crop protection specialist.

Learn how pulse production improves wheat yields, soil health and a producer's bottom line in the afternoon. Dr. Perry Miller, MSU Land Resources and Environmental Sciences professor, will discuss the long term value of pulses in rotation with wheat. Soil biology and the importance of soil quality will be presented by Dr. Catherine Zabinski, MSU Land Resources and Environmental Sciences associate professor. Dr. Brian Jenks steps up to the podium again and offers a discussion of desiccation research and restrictions. Shannon Berndt, executive director, or Kaye Effertz, Northern Pulse Growers Association marketing director, will provide an industry update and Leta Campbell will be speaking live from India via Skype where she will be attending the India Pulse Conclave. She will talk about Pulse Check-Off dollars and how they help to breathe life into the pulse industry— from farm to table.

Please join us for this valuable day of learning, connecting and networking. For more information please contact Ann Ronning, MSU Roosevelt County Extension ag agent: aronning@montana.edu 406-787-5312; Keith Brown, NDSU Extension agent in Divide County: Keith.Brown@ndsu.edu 701-965-6501; or Shelley Mills, MSU Valley County ag agent: smills@montana.edu 406-228-6241.

The U.S. Department of Agriculture (USDA), Montana State University and the Montana State University Extension Service prohibit discrimination in all of their programs and activities on the basis of race, color, national origin, gender, religion, age, disability, political beliefs, sexual orientation, and marital and family status. Issued in furtherance of cooperative extension work in agriculture and home economics, acts of May 8 and June 30, 1914, in cooperation with the U.S. Department of Agriculture, Douglas L. Steele, Vice Provost and Director, Extension Service, Montana State University, Bozeman, MT 59717.

**We Are Moving!**  
Look for us at our new location  
111 East Main  
Starting February 21st!  
**THE TRADING POST**  
406.433.7676

Antiques • Collectibles • Pawn • Guns • Gently Used Items

## Rauschendorfer Construction

**For All Your Steel Building Needs**



**406-433-7767 • 406-489-1880**

**NOW SUPPLYING FRAMING AND ALUMINUM MATERIALS FOR SALTWATER AND TREATER BUILDINGS**

# Peace of Mind...



**From Your Local Source For Security Systems & Installations**



**Stop in & visit with the experts today!**



**Business & Home Systems Designed To Suit Your Needs.**

- Security Cameras
- Recorders • Alarm Systems
- Temperature & Water Alerts with Voice Dialer
- Internet Access to Your Computer or Wireless Device



120 East Main St. • Village Square Mall • Sidney 406-433-4370

101 S. Merrill Ave., Glendive 406-377-3645

Mon.-Fri. 9 a.m. - 5:30 p.m. • Sat. 9 a.m. - 4 p.m.

## Liven Up Your Super Bowl Party!



**Chicken McBites**



**Limited Time Only**

**Shareable**



**i'm lovin' it**

Locally owned and operated  
Sidney • 433-1983



Do you spend money you don't have?  
Do you have a lot of unsecured debt?  
Do you have gambling issues?  
Do you have emotional pain around  
spending & money issues?

**Life Recovery Group**  
Overspenders, Gamblers & Debtors  
A 12-Step Fellowship  
Sidney Lutheran Bretheran Church  
Monday Evenings • 6:30-8 p.m.  
For information email: [sidneymt.life.recovery@gmail.com](mailto:sidneymt.life.recovery@gmail.com)



**Specializing In**

- Microdermabrasion
- Facials • Waxing
- Body Wraps
- Body Scrubs
- Eminence Organic Skin Cream
- Afterglow Mineral Makeup

**Nikki Carda Esthetician**

**Trendz Salon**

**Hours**  
Thurs. - Sat. • 9 a.m. - 6 p.m.  
Other days and times by appointment

118 S. Central • Sidney  
406-433-2714

# Construction To Begin This Spring On Phase II Of The Cancer Care Center

Sidney Health Center and the Foundation for Community Care are pleased to announce construction of Phase II of the Cancer Care Center will begin later this spring.

“A large anonymous donation is making our dreams come true for Phase II of the Cancer Care Center,” reported Staci Miller, Foundation’s executive director.

Although ongoing events and private donations continue to be accepted for the Cancer Care Center, administrators at Sidney Health Center said the significant donation made it possible to start the bidding process for Phase II and begin construction.

“We are very appreciative of the community’s support and excited to bring our cancer care services into one

convenient location within the next year,” stated Rick Haraldson, CEO.

Phase II involves renovating Suite 103 in the clinic and building a private entrance to the Cancer Care Center. Upon completion of the project, all outpatient cancer care services will be centralized, enhancing and streamlining patient care for those going through treatment. The renovation includes adding four chemotherapy and IV therapy infusion rooms with a centralized nursing station as well as providing designated clinic space for the visiting medical oncologist.

Currently, the medical oncology department is located in the ER area which utilizes one of the ER bays as well as an office/treatment room to administer chemotherapy and IV therapies.

“We can hardly wait to see this project to completion. Our chemotherapy and IV therapy patients will see the benefits first hand from improved privacy to personalized care,” stated Judy Carda, RN, Cancer Care manager. “Plus, the new infusion rooms will have windows, which I think our patients are most excited about especially for those with longer sessions.”

Funds continue to be raised to meet the \$1.4 million goal. In fact, the Foundation will be hosting an antique auction at the Richland County Fair Event Center in Sidney on April 21. The event is entitled “Braving Cancer

with Hope and Antiques” and is a collaborative effort with the Good Cents Store, which is an outreach service of Sidney Health Center. All proceeds will benefit Phase II of the Cancer Care Center.

To date, nearly 1,000 generous people have made gifts specifically to the Cancer Care Center with funds raised through grants, brick sales, community events, annual events and private donations. Commemorative naming opportunities are still available through donations to the Foundation for Community Care.

To donate to the Cancer Care Center fund, send your gift to the Foundation for Community Care, 221 2nd St NW, Sidney, MT 59270 or call 406-488-2273.



**Watford City Wrestling**

Watford City’s Clay Jorgenson, 160#, wrestles his opponent into a pin at the East-West Wrestling Tournament held in New Salem. (Photo by Frank Fish) See this story on [www.roundupweb.com](http://www.roundupweb.com) for more pictures and results from the East-West Tournament in New Salem on Jan. 27.

## NOTICE OF SPECIAL ELECTION FOR CHAIRMAN-AT-LARGE TO FINISH TERM EXPIRING APRIL 2013

**ELECTION TO BE HELD MARCH 7, 2012**  
**POLLS WILL BE OPEN 10 A.M. TO 7 P.M. LOCAL TIME**

**POLLING PLACES:**

- |              |                                     |
|--------------|-------------------------------------|
| DISTRICT I   | WILLIAMS COUNTY COURTHOUSE          |
| DISTRICT II  | TRENTON INDIAN SERVICE AREA-TRENTON |
| DISTRICT III | TBA                                 |

• This election is being held in accordance with Article II, Section 9 of the By-Laws of Trenton Indian Service Area which states:  
Vacancies: If a vacancy occurs through forfeiture, removal , death, or resignation, the TISA Board shall declare such vacancy and appoint a replacement to serve until the next regularly scheduled election if the remaining term is less than one (1) year. If the term remaining is more than one year, an election shall be held in that district, or in the case of a vacancy for the office of Chairperson, the election shall be at large.

**DEADLINES PURSUANT TO THE CODE:**

- ☐ Deadline for filing a Notice of Intent is February 6, 2012. This must be RECEIVED in the Election Board post office box by 5:00 p.m. on February 6, 2012 to be timely filed.
- ☐ Deadline for requesting absentee ballots will be February 24, 2012. This is being done to give “...the voter sufficient time to permit the voter to execute and return it [the absentee ballot] on or before the date of the election.” TISA Election Code, Chapter 2, Section C, Paragraph 4, amended by Resolution #TMBC2363-03-03 on 03/08/03.
- ☐ Deadline for candidates to submit a list of their watchers to the Election Board is February 24, 2012. This will ensure a fair and orderly election.

**NEW CHANGES:**

- ☐ Absentee ballots will be counted on the day of election.
- ☐ All ballots for Chairperson-at-large will be the SAME color.
- ☐ There will be no filing fee (the Election Board could not verify the valid passage of this section of the Election Code).
- ☐ The counting of the ballots will be held in the TISA Boardroom after all polls close. The Election Board, Administrative Counsel and Candidate watchers will be present. The public will be invited for the certification of the Election after the counting.
- ☐ The current Election Code, along with changes proposed by the Election Board will be presented to the TISA Board of Directors AFTER this election. Any proposed changes will be published for 30-day public comment.
- ☐ Contact Cheryl Donovan @ 774.0461 for Notice of Intent Form

**Closeout Special!**



**One 2011 F250 CC Diesel**  
• at ECFs Cost • Rebates • ECF Discount • Trade In Assistance

RCC.....	<b>\$45,845</b>
FCRBCC.....	<b>-\$3,500</b>
Trade Assist.....	<b>-\$1,000*</b>
ECF Cash.....	<b>-\$1,000*</b>
	<b>-\$2,250</b>
<b>*Must finance with Ford Credit OAC. Must have a trade in 1995 or newer</b>	
<b>\$38,095</b>	



**Eagle Country**  
*Experience the Eagle Country Difference!*

**Mon. - Fri. 8 a.m. - 5 p.m.**  
**Sat. 9 a.m. - 1 p.m.**

**215 East Main • Sidney, MT**  
**433-1810 or 1-800-482-1810**





Pizza Makers

St. Matthew's Catholic Church kids and parents make pizzas in the St. Matthew's school gym on Sunday, Jan. 29 to help pay for Youth Group Activities. They made and sold approximately 600 pizzas. (Photo by Jerry Kessler)



Oilers Hockey

Above: Taylor Dwyer, Watford City Oilers, helps out goalie Cheyenne Boots by clearing the puck out of the crease against Glasgow on Sunday in Watford City. The Lady Oilers defeated Glasgow 4-2. (Photo by Kathy Taylor)

Double Block

Right: Watford City's Shawn Fulwider and Michael Schulz team up for a double block against Blake Harstad, Stanley. The Wolves defeated Stanley 67-51. (Photo by Kathy Taylor)



Factory Closeout! Brand New!



1,100 sq. ft. • All Electric • Deliverable within 100 mile radius of Sidney, MT

**\$44,500**  
inc. Delivery & Setup

Call 402-429-0620  
for information & viewing



Crown Tree Homes  
Sidney and Williston

WHETHER IT IS VERY SIMPLE, OR  
ELEGANTLY SOPHISTICATED,  
A LASTING MEMORIAL REPRESENTS A LIFE  
THAT HAS TOUCHED US



Contact us now so we can help you find a monument  
or grave marker to dedicate to your loved one.



Fulkerson Funeral Home  
*It's All About Saying Goodbye*

315 Second St. NW Sidney, MT 59270 406.488.2805

www.fulkersons.com • email: ffh@fulkersons.com



“SUPER”  
RECLINER SALE

Save <sup>UP TO</sup> 45%  
on all (in stock)  
Recliners



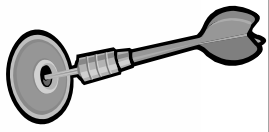
Be an “armchair  
quarterback” in comfort!

**FINNICUM'S** Shop Both Locations  
www.finnicumsfurniture.com **Furniture** Sidney, MT  
Culbertson, MT

Ranger Lounge  
Big Game



**DART**



**Tournament!**

Sunday Feb. 5

Sign Up: 12 Noon • Start Time: 1p.m. • \$10 Entry Fee

Blind Draw • 301-Cricket-301 • 51 Rule

*Wear your team apparel, if you don't have any, come anyway!*

**RANGER**  
**LOUNGE**  
**& CASINO**  
**& EATERY**

**Sidney's Original  
Sports Bar**




**Ranger is adding  
\$5 per player**

110 S. Central • Sidney, MT  
406-482-4566



**Mitchell's Oilfield Service Inc.**  
*Oilfield Construction*  
Maintenance • Trucking • Cranes  
Located 2 miles south of Sidney on Hwy 16  
Sidney, MT • 406-433-4927  
Baker, MT • 406-778-3221  
Glendive, MT • 406-345-3221  
Watford City • 701-842-4927  
Bowman, ND • 701-523-3040  
Killdeer, ND • 701-764-5528

  
**Sidney Sugars**  
INCORPORATED  
**Sidney Montana**

**Shop Us for...**  
• Furniture  
• Bedding  
• Appliances  
*Finnicum's*  
1051 S Central • Sidney, MT  
406-433-5373

  
809 EAST MAIN  
SIDNEY, MT  
406-433-3400

**SIDNEY TAX SERVICE, INC.**  
Computer Accounting  
Tax Returns • Payroll  
**DOUG LANG**  
**BILL ZIMMERMAN**  
**CRAIG PRICE**  
115 2ND ST NE • SIDNEY, MT  
406-433-3131

 **CHMS, P.C.**  
**CERTIFIED PUBLIC ACCOUNTANTS**  
Audits, Estate Planning, Business Consulting, Estate Tax, Income Tax  
P.O. Box 1067  
104 Second Avenue SW  
Sidney, MT  
406-433-2092  
FAX 406-433-2095

# Good Luck Sidney Eagle



## Sidney High School Wrestling Squad 2011-12

Back (L-R) Morgan Kohntopp, Gresh Jones, Lane Schafer, Cody Johnson, Lake Taylor, Spencer Brost, Jace Buxbaum, Cole Nesper, Body Rooks, Ethan Graves.  
Front (L-R) Gene Speldrich, Josh Alexander, Allen Neuleib, Joe Barsotti, Dace Fisher, Jory Stevens, Trevor Tracy, Aaron Galvon, Josh Romero.

  
**Frontier**  
Heating • Refrigeration  
Air Conditioning  
Sales/Service/Installation  
**Sidney, MT**  
**406-488-4657**

Don't Forget...  
• Softshell Saturday  
• Taco Tuesday  
• Taco Bravo Thurs-  
  
**TACO JOHN'S**  
724 S Central Ave  
Sidney, MT  
406-433-2295

  
**Eagle Country**  
SIDNEY, MT  
Experience the Eagle Country Difference!  
Mon-Fri. Hours: 8 - 5 p.m.  
Sat. Hours: 9 - 1 p.m.  
215 East. Main St. • Sidney  
1(800)482-1810 • 433-1810


  
**GURNEY ELECTRIC Inc.** Sidney, MT  
406-482-3204  
\*Electrical Supplies & Equipment  
\*Decorative Lighting  
\*Electrical Service

**"Dig 'er Done!"**  
  
**GORDER TRENCHING**  
• Trenching for new and existing Home Waterlines  
• Your local Montana Fiberglass Stock Tank Dealers  
**Specializing in Farm & Ranch Waterline and Water Tank installation**  
Shane & Lisa Gorder  
482-9672  
11685 CR350 • Sidney

  
It's All About Saying Goodbye  
**Fulkerson**  
**Funeral Home**  
315 Second St. NW  
Sidney, MT 59270  
406-488-2805  
email: ffh@fulkersons.com  
www.fulkersons.com

  
**SIDNEY Liquor STORE**  
Open:  
Mon.-Fri. 9 a.m. - 6 p.m.  
Sat. 9 a.m. - 5 p.m.  
The only local retail liquor store.  
809 E Main St, Sidney, MT  
406-433-2862

  
**Reese & Ray's IGA**  
203 2nd St. NW • Sidney  
406-482-3737

  
**Richland Pump & Supply**  
(406) 488-8706  
David Williams  
Cell (406) 489-8706  
Scott Ramus  
Cell (406) 489-8707  
1511 S Central Ave • Sidney

  
**M&M Cafe**  
Restaurant Special Events Catering  
Schools-We can work within your budget.  
All buses & fans call ahead for later hours!  
Open  
Mon.-Sat. 5 a.m.-9 p.m.  
Sunday 5 a.m.-8 p.m.  
1721 S. Central Ave. • Sidney  
**406-433-1714**

  
**Olson Plumbing & Heating**  
PO Box 375 • Sidney, MT  
**482-4027**

  
**Screen Play**  
Screen Printing & More  
Erin and Ty Graves  
2405 West Holly St. • 433-2400  
screenplay@midrivers.com



**Melby Construction**  
Gutters • Fascia • Soffit  
• Siding • Shingles  
A family business  
protecting and improving  
your family home.

**Creative Curbing**  
Guy Melby Phone:  
1-406-488-6624

  
**BLUE ROCK PRODUCTS CO.**  
501 9th Ave NE, Sidney  
406-433-3403

*C & L Chariot*  
Charlie & Loretta  
Dowse  
**Call to book  
your trips!**  
Sidney, MT  
**406-488-4015**  
**406-489-3464**

  
Water Trucks • Frac Tank Heaters  
• Winch Trucks • Vac Trucks  
Frac Tank Rental • Hot Oil Trucks  
Office  
406-433-4346  
Tim Partin 406-489-4988 Sean Latka 406-489-1650

  
**i'm lovin' it**  
**Sidney, MT**  
**406-433-1983**

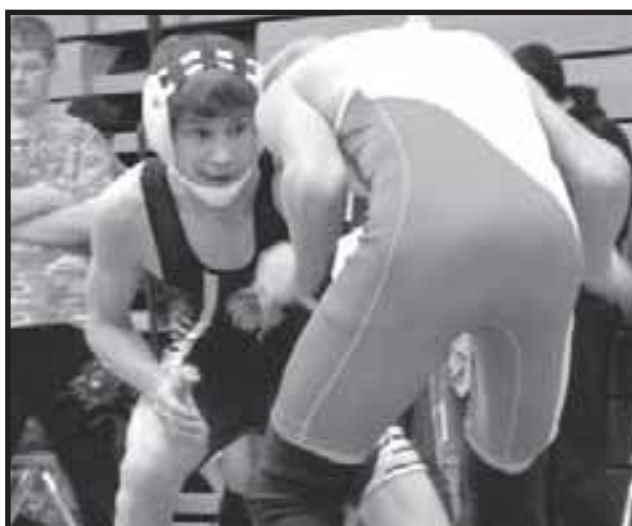
**East-Mont Enterprises Inc.**  
• Candy  
• Paper Goods  
• Cleaning Supplies  
• More!  
608 E. Main • Sidney  
Wholesale Distributors  
**406-433-2910**

# Wrestlers At Divisionals

## Class A Eastern Divisional Wrestling Tournament

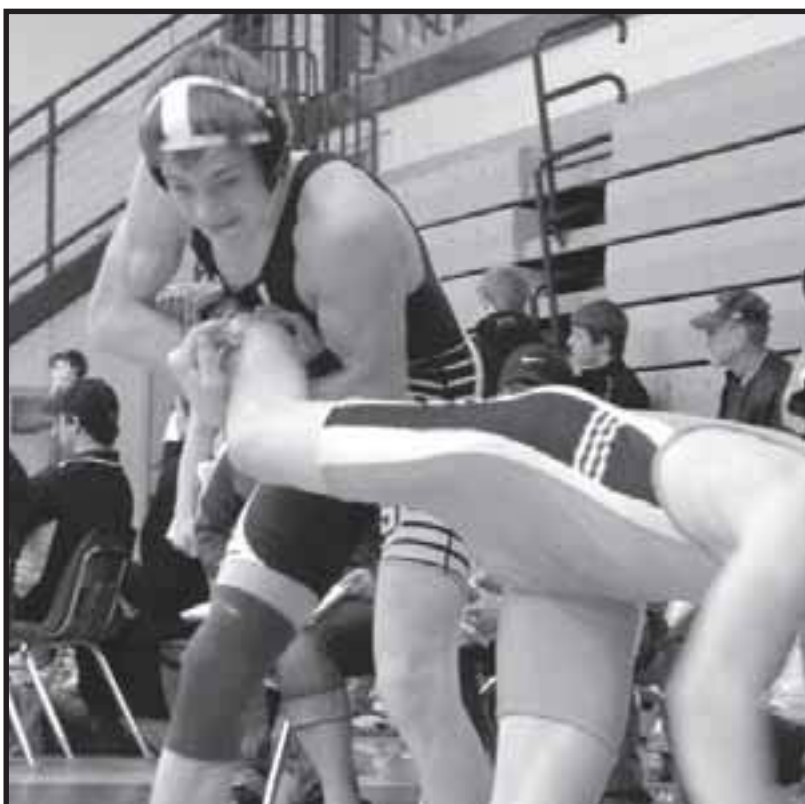
**Miles City High School**  
**Saturday Feb. 4, 2012**

**10 a.m. First Round • 12:30 p.m. Semis • 6 p.m. Finals**



  
904 East Main, Sidney, MT  
406-482-1303  
800-949-1303

**Sunny's**  
"It's Always Sunny at Sunny's!"  
**Family Restaurant**  
102 E. Main • Sidney  
406-433-1839  
Hours: 6 a.m. - 3 p.m. Mon. - Sat.  
6 a.m. - 2 p.m. Sun. • Breakfast only



  
Call Us For Delivery  
433-1971  
Sidney, MT

**THE DEPOT**  
Casino  
POKER KENO  
**HAS PIZZAZZ**  
Hwy. 16 S • 406-433-4650  
Sidney, MT  
• WE DELIVER •

  
**Regal Eagle**  
Casino & Lounge  
900 1/2 South Central • Sidney, MT  
Behind The Lone Tree Inn • 433-3245

**ELK RIVER PRINTING**  
Your 1-stop  
Full-Service Print Shop  
ALL COMMERCIAL PRINTING  
Full color Marketing Materials  
Color Copies • B&W Copies  
Laminating • Specialty Papers  
Card Stock  
**433-4375 Sidney MT**

  
**Winners PUB SPORTS BAR**  
Fridays - 18 wings &  
a pail of beer for \$19.99  
804 S. Central Ave.  
Sidney, MT 59270  
406-433-4636

**ACTION AUTO**  
  
406-433-2312  
1-800-788-2312  
220 E Main  
Sidney, MT



**PREBUILT HOMES**  
BUILT IN SMALL TOWN USA &  
MOVED TO YOUR TOWN ASAP!

For more information contact:  
Toby Romo at 406-769-2094  
romocarpentry.com

HOMES BY  BAINVILLE, MT

  
**NEU**  
CONSTRUCTION, INC.

Oil Field Roads & Locations  
• Reclaim Work  
• Gravel & Scoria Hauling

Fairview, MT  
406-742-5549

**LONG X BOTTLE SHOP**

In-store specials every week. Check out our hard ice cream!

8 a.m.-9 p.m. Hwy. 85, Watford City  
Mon.-Sat. 701-444-3335  
1-5 p.m. Sun.  
(Located in Long X Visitors Center)

**TAYLOR**  
**Ag Service**

Kent Taylor, Owner  
Watford City, ND  
701-444-3772  
Licensed in ND & MT

  
**RTC**  
Smarter. Better. Faster.

[www.RTC.coop](http://www.RTC.coop)  
VOICE • DATA • VIDEO

**HURLEY'S OILFIELD SERVICES**

• Potable Water • Sewer System  
• Loaders • Communications  
• Backhoe • Trucking  
• Skid Houses • Porta Potties

406-742-5312  
Fairview, MT

# Sports Booster

## WEEKLY SCHEDULE

### Basketball

Thursday, Feb. 2  
Savage vs Trinity Christian at Wiliston, Girls at 6 p.m., Boys at 7:30 p.m.  
Sidney vs Glendive at Sidney, Girls at 7:30 p.m.  
Watford City vs Beulah at Beulah, Boys, 6:15 p.m.

Friday, Feb. 3  
Culbertson vs Circle at Culbertson, Girls at 6 p.m., Boys at 7:30 p.m.  
Fairview vs R&L at Richey, Girls at 6 p.m., Boys at 7:30 p.m.  
Froid/Lake vs Bainville at Froid, Girls at 6 p.m., Boys at 7:30 p.m.  
Savage vs Brockton at Savage, Girls at 6 p.m., Boys at 7:30 p.m.  
Sidney vs Plentywood, Girls at Plentywood at 7:30, Boys at Sidney at 7:30 p.m.  
Watford City vs Dickinson Trinity at Watford City, Boys at 7:30 p.m.

Saturday, Feb. 4  
Bainville vs Fairview at Bainville, Girls at 6 p.m., Boys at 7:30 p.m.  
Culbertson vs Froid/Lake at Culbertson, Girls at 6 p.m., Boys at 7:30 p.m.  
R&L vs Brockton at Brockton, Girls at 6 p.m., Boys at 7:30 p.m.  
Savage vs Westby/Grenora at Savage, Girls at 6 p.m., Boys at 7:30 p.m.  
Sidney vs Glendive at Glendive, Boys at 7:30 p.m.  
Watford City vs Heart River at Watford City, Girls at 4 p.m.

Sunday, Feb. 5  
Brockton vs Lambert/Richey at Brockton, Girls at 6 p.m., Boys at 7:30 p.m.

Monday, Feb. 6  
Watford City vs Ray at Watford City, Boys, 6:15 p.m.

Tuesday, Feb. 7  
Watford City vs Hazen at Watford City, Girls at 7:30 p.m.

### Wrestling

Friday, Feb. 3  
Watford City vs New Salem at New Salem

Saturday, Feb. 4  
Sidney at Divisionals at Miles City, First Round, 10 a.m.; Semis, 12:30 p.m.; Finals, 6 p.m.

### Hockey

Friday, Feb. 3  
Sidney Girls U19 vs Miles City at Sidney, 7 p.m.

Saturday, Feb. 4  
Sidney Mites/Termite's Cross Ice Games, 8-10 a.m.  
Sidney Jr Gold vs Langdon at Langdon, 5 p.m.  
Watford City Bantam vs Hazen at Hazen, 2 p.m.  
Watford City Girls vs Bottineau at Bottineau, 1:30 p.m.

Sunday, Feb. 5  
Sidney Girls U19 vs Glasgow at Glasgow, 2 p.m.  
Sidney Girls 12U vs Glasgow at Glasgow, 10 a.m.  
Sidney Peewee vs Watford City at Sidney, 2 p.m.  
Sidney Jr Gold vs Mayport at Mayport, 11 a.m.  
Watford City Peewee vs Sidney at Watford City, 2 p.m.

### Gymnastics

Saturday & Sunday, Feb. 4&5  
Sidney at Lup Memorial, Minot, ND

# Support Your Favorite Team

Be Sure To Thank The Sports Booster Schedule Sponsors On This Page

  
**M&M Cafe**

All buses and fans call ahead for later hours!

1721 S. Central Ave. Sidney  
406-433-1714

  
**Dragon Wheel**  
Café & BBQ

Hours:  
6 a.m. - 7 p.m.  
Mon. - Sat.  
6 a.m. - 2 p.m. Sun.

Fairview, MT  
742-5200

  
**Retail Eagle**

**Casino & Lounge**  
Behind The Lone Tree Inn In Sidney

Happy Hours 4-6 Weekdays  
50¢ Off All Drinks

  
**POWDER KEG**

Family Dining

Fairview  
406-742-5180

Open at 4:30 p.m. Tues.-Fri.  
2 p.m. Sat. & Sun.

  
**HOT STUFF PIZZA**

  
**FOOD ON THE GO**

  
**Farmers Union Oil Co.**

101 S Main • Watford City  
701-444-3639

**We Support All The Area Teams!**

  
**FIRST NATIONAL BANK & TRUST**

Member FDIC

Main St. • Alexander • 701-828-3338  
100 N Main • Watford City • 701-642-2381

## 2012 Winter Grazing Seminar Feb. 16-17 Conrad

Attention cattle ranchers - don't miss this event! This year's Winter Grazing Seminar will feature some of the top names in the agriculture industry. Come see Fred Provenza, Marni Thompson, Chris Christens, Marsha Goetting and Patsy Houghton in Conrad.

The first day of the seminar will feature Dr. Fred Provenza, Utah State University professor emeritus, with a very interesting presentation on grazing animal behavior. This information can be used to assist and improve grazing management on any ranch. The next speakers will be Marni Thompson, Natural Resources Conservation Service Resource conservationist, and Chris Christiaens, Farmers Union. Thompson and Christiaens will share their experience on a successful Cows Eat Weeds project in Pondera County. The original Cows Eat Weeds design was developed by Kathy Voth who used studies from Dr. Provenza and it's all about animal behavior.

The first day will conclude with a steak banquet emceed by DNRC's Ray Beck and featuring entertainment from the Ringling 5.

The second day of the seminar will begin with Dr. Marsha Goetting, Montana State University agriculture economics professor. Goetting gives a hands-on, real-life presentation on ag-

riculture estate planning. This is something for every Montana ranch family. The final speaker of the day will be Dr. Patsy Houghton, Heartland Cattle Company, McCook, NB. Houghton is the pioneer of the now common terminology of "professional heifer development". Along with heifer development and calf weaning, she is actively involved with cattle health, nutrition and reproduction research at her facilities. The event will conclude with a question and answer panel with all of the speakers at the seminar.

The 2012 Montana Winter Grazing Seminar is hosted by a partnership of the Toole, Glacier, Liberty and Pondera County Conservation Districts, in cooperation

with the Governor's Rangeland Resources Executive Committee (RREC) and the Montana Dept. of Natural Resources and Conservation (DNRC).

Registration for the seminar begins at 10 a.m. on Thursday. Registration fees include meals during the event (lunch and dinner Feb. 16, breakfast and lunch Feb. 17), all speakers and entertainment for \$45 prior to Feb. 3 and \$50 thereafter. For more information, contact Kody Farkell, Pondera County Conservation District administrator at kody.farkell@mt.nacdn.net 406-278-7611 x101 or Heidi Crum, Rangeland Resources Program state coordinator at hcrum@mt.gov 406-444-6619.

## Tickets Now On Sale For "You Can't Take It With You"

Entertainment, Inc.'s "You Can't Take It With You" tickets are now available for evening performances Feb. 2-4 and 6.

Performances are at 7:30 p.m. CST. There will also be a Sunday, Feb. 5 matinee only at 2:30 p.m. CST. You may call the box office at 701-577-3179 or go online to [www.entertainmentinc.org](http://www.entertainmentinc.org).

"You Can't Take It with You" is a comedic play in three acts which originally opened at the Booth Theater on Dec. 14, 1936, and played for 837 performances. The play won the 1937 Pulitzer Prize for Drama. In 1938, it was made into a film by Frank Capra "Mr. Deeds Goes to Town, Mr. Smith Goes to Washington" and starred Jean Arthur and James Stewart.

**2 AUCTIONS ONE DAY**

**Saturday, Feb. 4th 11 a.m. Preview 9 a.m.**  
Richland County Fair Grounds Exhibit Hall 101 & 102 Sidney, MT

**Tom VanHale Construction Hysham, MT**

(DeWalt, Milwaukee, Makita Power Tools Drills, Saws, Angle Grinders Plus More), Wilton Welding Clamps, Irwin Vise Grips, Wobble Light Fan Cooled Portable Work Light, IR Air Tools, Reed Pipe Wrench, Proto Wrench, Estwing Hammers, Wright Breaker Bar, S.K. Breaker Bar, Large Pry Bars, Floor Jacks, Bar Clamps, 4 Ton Come Along, Chain Hoist, 6pc Jumbo Wrench Set, Needle Nose Pliers, Sledge Hammers, Chain Load Binders, Mallets, Box Lots of Miscellaneous Tools Drill Bits Wrenches Sockets Plus More, Craftsman Air Compressor, PLS Laser Level, Dewalt 9.6-18v Rotary Laser W/DW06 Construction Tripod, Ladders, Hand Tools, Plus Many Items We Were Unable To List Due To Time Constraint.



1994 Jant 400 Trailer 30,000 GVW Triple Axle With Removable Sides  
1998 Chevy Silverado 1/4 Ton 4x4 Short Box  
1980 Winnebago Chieftan  
120 Single Axle Utility Trailer No Title

1995 Timber Wolf 200 Cargo Trailer  
2009 Utility 180 Trailer Double Axle



**Kober Saddlery**

Over 15 New Saddles, Custom Built For Kober Saddlery. All New Saddles Built on Wade, Association & Semi Quarter Rawhide Covered Trees 5 year Warranty on Trees. Several New Barrel Racers and Youth Saddles. Horse Tack Items Include Billy Cook, MacPherson Leather Halters Mini to Large Horse Size, MacPherson Cow & Calf Show Halters, Pack Saddle Panniers, 100% Wool Blankets, Saddle Pads, Leather Pouches, Nylon Halters, Clippers, Headstalls, Reins, Latigos, Cinches, Saddle Bags, Breast Collars, 3 Tier Saddle Stands, Silver Bits & Spurs, Lariats, Lead Ropes, Lunge Lines and Much More.



See Complete List & Pictures @ [www.nationalauctionusa.com](http://www.nationalauctionusa.com)

AUCTIONEER: VERN SEAL (406) 671-4520  
TERMS: CASH, GOOD CHECK, MASTERCARD, VISA, 10% BUYER PREMIUM PLUS ADDITIONS



# The Roundup Classifieds

Reach Over 21,000 Readers Each Week  
 In Eastern Montana & Western North Dakota  
 And Always On The Internet at  
 roundupweb.com

(Paypal required for online purchases)

\$7up to30 Words

Classy Deadline: Noon Monday

Add a photo  
 to your classy  
 online!

## HELP WANTED

### JANITOR WANTED!!

Looking for full or part-time help. Duties include sweeping, mopping, dusting, vacuuming, deep cleaning & other duties as requested. Wages are negotiable. Apply at Sidney Cleaners and Laundry, 121 2nd Ave NE, Sidney. 406-433-1405.

### ADMINISTRATIVE ASSISTANT

If you love to meet the public, answer questions, work hard & have fun this Administrative Assistant position with the Sidney Area Chamber of Commerce & Agriculture is for you. Computer proficiency in Quickbooks, Word, Publisher & Excel preferred. Experience in Dreamweaver a +. Contact the Sidney Job Service to apply. Salary DOE.

### AD REPRESENTATIVE

Be a part of the most effective media outlet in the MonDak/Bakken region. The Roundup newspaper is looking for an enthusiastic, go-getter that doesn't mind having an unlimited earning potential. Represent a successful regional newspaper in western North Dakota that has been a mainstay of the MonDak/Bakken area for 30 years! Employee will service existing accounts with some work to gain new business. Commission and salary options are available with the possibility to earn more than an oilfield job. Send resume

and applications to The Roundup, PO Box 1207, Sidney, MT 59270 or apply at local job service.

### HELP WANTED

Full & part time cooks & bartenders, Hi-Way Lounge, Alexander, 701-828-3100.

### HELP WANTED

In store help wanted. McKenzie Building Center, Watford City. 701-444-3665.

### CARRIERS WANTED

Need extra cash or want to get some exercise? We have carrier routes available in most parts of Sidney. New motor route just opened. Call Linda to apply or fill out application at The Roundup.

### HELP WANTED

Now hiring Floor Hands, Derrick Hands & Operators in the oil fields of ND for MBI Energy Services, a veteran oilfield service company. For an application please visit www.mbienergyservices.com or 701-575-8242.

## FOR RENT

### FOR RENT

2 bdrm. house, Lambert. Needs good cleaning & some handyman work. Will trade cleaning & work for some rent. 406-774-3453 leave message.

### FOR RENT

Office space, 1050 S. Central Ave. Call Harvey, 406-433-6143 or 406-480-2367.

## SERVICES

### CARPENTRY SERVICES

Carpenter, Remodels, New Construction. Free Estimates. Patrick W. Baxter, Fairview`. 406-489-2836

### MECHANICAL SERVICES

Most repairs, minor & major, on cars & pickups. Call Bryan 406-478-4073.

### COMPANIES

Need a place to conduct your business? We can accommodate your needs. Great Sidney location near Hwy. 16. 406-488-4338 for more info.

### HOT SHOT TRUCKING

Haul Lass, LLC is now servicing the area. Delivering anywhere, anytime! Reliable, responsible & local! Give me a call at 406-480-0126 or 406-488-6613, email hoffhd@hotmail.com or fax 406-488-6107. Dianna Hoff, Hauler.

### WELDING

Welding & repair work. No job is too small. Portable welder, reasonable rates. 701-444-2936.

### COMPLETE SERVICE CENTER

The Roundup provides free faxservice at Meuchel Compter Services, Watford City, for all news, photos & advertising copy. **You may drop your Roundup payments at Meuchels.**

## FARM & RANCH

### FOR SALE

SD 7720 combine, w/head, SD 7720 combine, 80' Blumhardt sprayer. 406-798-3881 or 406-480-1083.

### PIGS FOR SALE

4-H pigs, weaner pigs, butcher pigs. 406-774-3453 leave message.

### HAY FOR SALE

Alfalfa hay round bales. 406-433-8946 or 406-489-0130.

### WANTED

Laying hens. 406-768-3398 day or 406-448-2593 evening.

### VERMEER HAYING EQUIPMENT

See us today for all your haying & feeding equipment, sweeps & Farm Oil. Anderson Vermeer Sales & Service. Open Mon.-Fri., 8 a.m.-5:30 p.m. 701-828-3358 or 701-828-3482 after hrs., Alexander.

## MISCELLANEOUS FOR SALE

### DRESS FOR SALE

Brand new size 22 wedding dress. White w/red detailing. Matching veil & tiara. Girls' size 6 matching flower girl dress. Bought in '07 & both have never been worn & have never touched the ground. Purchased for over \$1,000, asking \$600 OBO for everything. Call Erin 406-480-3834.

### OVEN FOR SALE

Hobart commercial double deck convection oven, double deep fryer, 6' commercial hood, exhaust & 5 suppressant system. Call Russ at 406-489-7431.

### FOR SALE

Hunter electronic wheel balancer, DSP9002DGM. Hunter tire mount & dismount machine, TC3250. Both are

Xango Mangosteen Juice

The Carpenter's Storehaus

Your Local Bille Book Store

Sidney, MT

406-433-3355

## WANTED

### ANTLERSTO BUY

Deer or elk antlers, brown or white. Sheds, racks or mounts. Toll free 1-866-245-9139 or 406-951-0671.

## TRUCKS

Off lease pickups, utility trucks, SUV's. Wholesale. www.glendivesales.com 800-726-6763

Check us out weekly with...

Roundup

Monthly with...

Golden Roundup

Or take advantage of all our publications every day at...

Roundup WEB.COM



## Beautiful, Completely Upgraded Private Chalet

Located east of Miles City, MT, in the Pine Hills Ranchettes. 2,200 sq. ft. of redwood wrap-around deck to enjoy the breathtaking panaramic view.

Call Integrity Realty at 406-234-8100 or go to www.realestatemilescity.com to see more pictures.

## --Public Notice--

Nortana Grain Co. in Lambert MT. is seeking bids for the demolition and removal of the Nortana grain elevator, annex, scale room, attached feed shed and offices located in Lambert beginning in 2012. All services in the current facility will be discontinued in 2012. Please contact the general manager, Tondel Beery at 406-774-3331 or cell 480-3535 for details. No services plan to be interrupted.

All services will continue but moved to the new office/shop building in January of 2012. Parallel to the demolition, a new state of the art portable seed cleaner, modern grain handling equipment, and a feed shed will replace the facility.

norTana GRAIN CO.

406-774-3331

406-433-3014

LAMBERT-SIDNEY

THE PROPERTY GROUP  
 Mini-Storage



STORAGE UNITS AVAILABLE

20X20 • 10X20

10X16 • 8X9

Sidney, MT

482-3799 or 482-2666

# The Roundup

Reaching over 8,400 Households in Western North Dakota

and Eastern Montana Every Week

Classified Ad Order Form (Please Print)

1	2	3	4	5
6	7	8	9	10
11	12	13	14	15
16	17	18	19	20
21	22	23	24	25
26	27	28	29	30 \$7.00
31 \$7.10	32 \$7.20	33 \$7.30	34 \$7.40	35 \$7.50 (etc.)

\$7.00 for 30 words or less; additional words

10¢ each

Number of words x Number of Times = Cost \$

Name

Payment Must Accompany Ad

Mail To:

The Roundup

P.O. Box 1207, Sidney, MT 59270



# 2012 Ft Union Fellowship At Ft Union Trading Post National Historic Site

The Friends of Fort Union Trading Post and the National Park Service are offering a \$1,000 Fort Union Fellowship for 2012. This annual fellowship is intended to support a qualified researcher wishing to explore and produce an article or monograph on an aspect of Fort Union trading post history, broadly defined. The fellowship is open to all applicants, students are encouraged to apply.

Fort Union Trading Post National Historic Site commemorates a brief period of peaceful coexistence between Northern Plains Indians and Euro-Americans at the most important fur trading post on the Upper Missouri from 1828-1867. Here the Assiniboine, Crow, Blackfeet, among others, traded buffalo robes and other furs for trade goods such as cloth, guns, blankets, knives, kettles and beads.

Recipient of the award must be in residence at Fort Union, North Dakota, for a minimum of one week in 2012, preferably during the summer. A brief, written report on research completed must be received within two weeks of departure, the recipient forecasting the intended publication expected from his research.

- Criteria for selection include:
1. Suitability of the Fort Union library, archival, or museum collections to the proposed research.
  2. Applicant's experience and training.
  3. Potential for the project to make a significant contribution to scholarship on Fort Union.
  4. Potential for the project to result in an article or book

## Stella Ash, 89, Sidney, MT

Funeral service for Stella Ash, 89, Sidney, MT is at 2 p.m., Wednesday, Feb. 1, 2012 at Lonsdale United Methodist Church with Pastor Vicki Waddington officiating.

Cremation will follow the services. Remembrances and condolences may be shared with the family at [www.fulkersons.com](http://www.fulkersons.com). Stella died on Monday, Jan. 30, 2012 at the Sidney Health Center Extended Care Facility.

### Employment Opportunity

Richland Federal Credit Union is looking for a career minded individual to fill the position of a loan secretary. Prospective applicant should have experience with Excel and Word, good organizational skills and understanding of agriculture. Applications are available at the Sidney Job Service. EOE.





**SIDNEY HEALTH CENTER**  
*Exceptional Care for Life*

Sidney Health Center is accepting applications for the following positions:

- RN Operating Room Supervisor
- Clinic Patient Account Rep.
- Retail Food Services Cook
- RN Case Manager
- Admissions Clerk
- C.N.A. ECF

For additional information or to apply online, please visit our website at:  
**[www.sidneyhealth.org](http://www.sidneyhealth.org)**

- or contact -

**Marilyn Olson**  
216 14th Ave SW • Sidney, MT 59270  
Phone: (406) 488-2571  
[mjolson@sidneyhealth.org](mailto:mjolson@sidneyhealth.org)



publication.

Applicants need not be professional historians or archaeologists, but must evidence experience as well as ability in historical research. Evaluation of applications will weigh academic training, previous publications, and the extent to which the recipient will examine new topics or offer new interpretations.

Applicants should submit a project proposal not exceeding four double-spaced pages, referencing applicability of the Fort Union Trading Post collections. Included should be a resume listing previous publications, if any; and the names, affiliations, and telephone numbers of three references capable of commenting on the applicant's research skills and experiences.

## Fairview 'Grass Farmer' To Discuss Grazing Innovations At ARS BrownBagger

Fairview area rancher, educator and self-defined "grass farmer" Wayne Berry, will share insights into his holistic management approach to ranching on Friday, Feb. 3, as part of the USDA-ARS Northern Plains Agricultural Research Laboratory's (NPARK) 2012 BrownBagger seminar series. The one-hour session begins at noon and is open to the public.

Wayne's talk is entitled "What I've learned since 1955" and describes the many tools and strategies he's experimented with over the past five decades to accomplish his and his family's goals of enjoying life, while ensuring that their ranch stays profitable and the land remains healthy and sustainable. An innovator, Wayne has experimented with a wide variety of tools and strategies over the years to convert his original traditional farming and ranching operation to a holistic, self-sustaining "grass farm" livestock operation. Over the years, Wayne has initiated a successful study with the Natural Resources and Conservation Service to test the adaptation and performance of warm season grasses in Montana to extend the "green period" in his dryland pasture. He's also developed a bale grazing system that allows him to keep cattle out on pasture through the winter months while at the same time fertilizing the soil for the following spring. Wayne's innovations earned him a teaching post at Williston State College, where for several years he taught a holistic management course. Although now retired from teaching, Wayne still readily shares his knowledge and experience with others, and will do so again this coming Friday at NPARK. Please join us for this fascinating discussion in the second of our 2012 Friday BrownBagger seminars. The lab is located at 1500 N. Central Ave., Sidney. All presentations begin at noon. For more information, contact Beth Redlin at 406-433-9427.

## Chocolate Tickets On Sale

It isn't too late to get your tickets for Celebrating Chocolate—but it will be soon. The event is Saturday, February 4th. Doors open at 7pm.

Tickets are \$20 for MonDak members, \$25 for non-members. Join at the time of purchase to take advantage of the reduced ticket price. If you can't make it by the museum during business hours, we'll be happy to take your ticket order over the phone at 433-3500.

Celebrating Chocolate is a wonderful event, this year featuring the music of Charlie Denison, a silent auction and of course, lots of chocolate.

Proceeds for this event bring live performing arts to Sidney in 2012. Along with chocolate and live music, we will have savory treats, wine, stout and ice cold milk.



**SONDA'S solutions**  
Specializing in FR Clothing

**Specializing In**

- **FR Clothing** • **Embroidery**

Office: 406-433-6757 • Cell: 406-697-7153  
2221 S. Central Avenue • Sidney, MT 59270  
Fax: 406-433-6755 • Website: [www.sondassolutions.com](http://www.sondassolutions.com)



**Arnegard Auto Sales**

2007 Pontiac Gran Prix, GXP, V-8 .....	\$15,995
2009 Honda Fit .....	\$15,995
2004 Chevy 2500, crew cab .....	\$14,495
2006 Volkswagon Jetta TDI ....	\$10,995
2004 Pontiac Grand Prix .....	\$8,995
2005 Ford 500, AWD .....	\$8,495
2003 Ford Crown Victoria .....	\$6,995
2000 Chevy S-10, ext. cab, 4x4 .....	\$4,995
1998 Dodge Dakota, 4x4 .....	\$4,995
2001 Buick Century .....	\$3,495

701-586-3552 • Hwy. 85W • Arnegard, ND

Applications must be postmarked no later than Feb. 29, 2012, and be sent to:

Fort Union Fellowship Committee Fort Union Trading Post NHS, 15550 HWY 1804 Williston, North Dakota 58801. For additional information contact Loren Yellow Bird, Chair, Fort Union Fellowship Committee, 701-572-9083 or [Loren\\_Yellow\\_Bird@nps.gov](mailto:Loren_Yellow_Bird@nps.gov).

Announcement of the award will be made no later than March 31, 2012.

## Eagles Speech and Drama Team Competes At State

The Sidney Eagles High School Speech and Drama headed to Polson last Wednesday to compete in the Class A State Competition. The top 24 competitors in each category went head to head in three rounds on Friday and two more on Saturday. Then the field was cut to 16 for semi finals, with the top 8 competing in the Finals. The Eagles had six students make it to finals. The Speech Medalists for Extemporaneous Speaking-Kalen Hance, 3<sup>rd</sup>; Memorized Public Address-Tori Hill, 5<sup>th</sup>; Drama Medalists for Classical Duo-Ciara Parks and Taylor Fay, 4<sup>th</sup>; Humorous Solo-Carl Redman, 5<sup>th</sup>; Serious Solo-Taylor Fay, 4<sup>th</sup>; bringing to the end of a fabulous season. The team accomplished 1<sup>st</sup>-Drama Sweeps CCDHS Invitational; 1<sup>st</sup>-Drama Sweeps Sidney Invitational; 1<sup>st</sup>-Speech Sweeps Plentywood Invitational; 1<sup>st</sup>-Drama Sweeps Plentywood Invitational; 1<sup>st</sup>-Drama Sweeps Glasgow Invitational. Congratulations to the entire team for a WONDERFUL Season.

### ROUNDUP TRADER



**2004 Yukon XL**  
137k mi., 4 wheel drive, leather interior, DVD, remote start, good tires, maroon.

**\$9,900**  
Call 406-489-2612

**PLACE YOUR PHOTO HERE!!**

**Only \$15/wk**  
Email: [classads@esidney.com](mailto:classads@esidney.com)

**SY Soren**  
New! AgriPro's Highest Return Per Acre

**Kelby**  
High Protein and Complete Agronomics

**Jenna**  
The Yielder with Protein

**Reeder**  
Good Yields and Protein Under Wide Ranging Conditions

**SY Tyra**  
New! AgriPro's Sootly Tolerant Variety

**Brennan**  
Balanced With High Yield and Protein

**SY605 CL**  
High Yield CLEARFIELD® Spring Wheat

**Trapeze Yellow Pea**

**SKOV SEED**  
New High Yielding Variety with Good Height and Standability

**Randy Skov | Fairview, MT**  
406-747-5217 Home | 406-489-0165 Cell

*Call Today!*

**AgriPro**



# Lunch Menus

**Richey Schools**  
Wed., Feb. 1: Super salad bar.  
Thurs., Feb. 2: Taco salad, pretzels w/cheese, pineapple.  
Fri., Feb. 3: Chicken ala king, noodles, bread.

**Sidney School**  
Wed., Feb. 1: Super nachos, corn, strawberry cups, milk.  
Thurs., Feb. 2: Ravioli, vegetable, pulled pork, applesauce, milk.  
Fri., Feb. 3: Chili, cinnamon rolls, carrot sticks, pineapple, milk.  
Mon., Feb. 6: Chicken burger, cheesy potatoes, fruit cocktail, milk.  
Tues., Feb. 7: Tater-tot hot dish, mixed veggies, pears, dinner roll, milk.

**Rau School**  
Wed., Feb. 1: Chicken pot pie, cottage cheese, green beans, fruit salad.  
Thurs., Feb. 2: Cheeseburger, fries, veggies, mandarin oranges.  
Fri., Feb. 3: Soup/Salad, fruit, bread.  
Mon., Feb. 6: Hot Dogs, scalloped potatoes, green beans, peaches.  
Tues., Feb. 7: Super Nachos, salad, fruited Jell-o.

**E. Fairview School**  
Wed., Feb. 1: Meatballs w/gravy, mashed potatoes, peas, mandarin oranges, bun.  
Thurs., Feb. 2: PBJ sandwich, chicken noodle soup, carrots, apples.  
Fri., Feb. 3: Chicken nuggets, noodles, green beans, oranges, bun.  
Mon., Feb. 6: Chicken casserole over biscuits, lettuce salad, green beans, Jello/pears, biscuit.  
Tues., Feb. 7: Goulash, corn, oranges, cookie, bun.

**Fairview School**  
Wed., Feb. 1: Hot chicken sandwich, mashed potatoes, green beans, Jello, bread.  
Thurs., Feb. 2: Taco hot dish, chips & salsa, carrots, pudding.  
Fri., Feb. 3: 'Super Bowl Lunch'  
Mon., Feb. 6: Enchilada casserole, tossed salad, corn, fruit.  
Tues., Feb. 7: Slushburgers, potato, pasta salad, fruit.

**Culbertson School**  
Wed., Feb. 1: Potato Cowboy dish, pears, cookie.  
Thurs., Feb. 2: Pizza pockets, green beans, apple crisp w/topping.  
Fri., Feb. 3: Tomato soup, grilled cheese, apple, carrot sticks.  
Mon., Feb. 6: Nachos, lettuce, pears.  
Tues., Feb. 7: Hamburger & fries, apricots.

**Bainville School**  
Wed., Feb. 1: Chicken fried steak, hash browns, gravy.  
Thurs., Feb. 2: Chuckwagon corn, Spanish rice, peaches.  
Fri., Feb. 3: Italian dunkers, green beans, pineapple.  
Mon., Feb. 6: Chicken noodle hotdish, mixed vegetables, peaches.  
Tues., Feb. 7: Popcorn chicken, mashed potato bowls, cookies.

**Lambert School**  
Wed., Feb. 1: Cheeseburger casserole, green beans, applesauce, buns, milk.  
Thurs., Feb. 2: Chili, cheese & crackers, buns, milk.  
Fri., Feb. 3: Chicken patty, mashed potatoes, gravy, green beans, pears, milk.  
Mon., Feb. 6: Scalloped potatoes, ham, corn, buns, cake, milk.  
Tues., Feb. 7: Goulash, green beans, bread, apricots, milk.

**Froid School**  
Wed., Feb. 1: Roast turkey, mashed potatoes w/gravy, buttered corn, pumpkin bars, bun.  
Thurs., Feb. 2: Goulash, relishes, cheese stix, fruit, buns.  
Fri., Feb. 3: Potato soup, sub sandwiches, apple wedges, carrot stix.  
Mon., Feb. 6: Taco salad, cinnamon rolls, peaches.  
Tues., Feb. 7: Chicken pot pie, fruit jello, biscuits.

**Savage School**  
Wed., Feb. 1: Hot ham & cheese, French fries, apricots.  
Thurs., Feb. 2: Fish patty, mac-n-cheese, applesauce, green beans.  
Fri., Feb. 3: Taco hot dish, green beans, applesauce.  
Mon., Feb. 6: Spaghetti wiener casserole, peas, fruit cocktail, bread.  
Tues., Feb. 7: Baked chicken, mashed potatoes, corn, pineapple, bread.

# Everyday Savings

**CERTIFIED PRE-OWNED**  
CHEVROLET BUICK GMC  
No Worries.™

Introducing Owner Care: a pre-owned vehicle benefits package that raises our already-great coverage exclusive 2-year/30,000 Mile¹ Standard CPO Maintenance plan, which includes oil changes, tire rotation, (MPV)². We also give you the added security of a 12-Month/12,000-Mile³ Bumper-to-Bumper Warranty Limited Warranty. Plus you get 24/7 roadside assistance with courtesy transportation during the Power Day/150-Mile Customer Satisfaction Guarantee. Owner Care is No Worries™ on a whole new level.

¹Whichever comes first. See participating dealer for details. ²Motor Fleet Vehicle Inspection. A complete inspection by a qualified technician. Third-party inspection services on equipment, and time. ³Whichever comes first. See state of purchase. See participating dealer for limited warranty details. ⁴Whichever comes first. See state of purchase. See participating dealer for limited warranty details.



**2010 Chevy Cobalt**  
#U3835A 31,000 Miles  
**\$15,995**  
\$239.43\* per mo./60 mo.



**2010 Chevy Malibu**  
#U3837A 32,000 Miles  
**\$18,995**  
\$284.38\* per mo./60 mo.



**2010 Chevy Equinox AWD**  
#U4002A 38,000 Miles  
**\$26,995**  
\$404.09\* per mo./60 mo.



**2009 Chevy Traverse AWD**  
#U4003A 35,000 Miles  
**\$26,995**  
\$404.09\* per mo./60 mo.



**2010 Buick Enclave CXL AWD**  
#G3566B 22,000 Miles  
**\$36,995**  
\$553.78\* per mo./60 mo.



**2009 Chevy Malibu**  
#G3721A 17,000 Miles  
**\$20,995**  
\$314.28\* per mo./60 mo.



**2008 Buick Lucerne CXL**  
#B3508A 15,000 Miles  
**\$20,995**  
\$314.28\* per mo./60 mo.



**2010 Chevy Impala**  
#U4004A 34,000 Miles  
**\$18,995**  
\$284.34\* per mo./60 mo.



**2011 Ford Escape**  
#C3930A 6,000 Miles  
**\$27,995**  
\$419.06\* PER MO./60 MOS.



**2010 Honda CR-V AWD**  
#C3654A 24,000 Miles  
**\$23,995**  
\$359.18\* PER MO./60 MOS.



**2009 Toyota Avalon**  
#G3532A 18,000 Miles  
**\$26,995**  
\$404.09\* PER MO./60 MOS.



**2008 Chevy Suburban**  
#C343A 73,000 Miles  
**\$28,995**  
\$530.52\* PER MO./48 MOS.



**2010 Chevy Camaro 2LT V6**  
#K3476A 6,300 Miles  
**\$27,995**  
\$419.06\* PER MO./60 MOS.



**2008 Buick Lucerne CX**  
#B3685A 54,000 Miles  
**\$15,995**  
\$292.66\* PER MO./48 MOS.



**2005 Pontiac G6 V6**  
#G3791A 41,000 Miles  
**\$13,995**  
\$256.06\* PER MO./48 MOS.



**2009 Pontiac Vibe**  
#U4147B 40,000 Miles  
**\$16,995**  
\$254.40\* PER MO./60 MOS.



**2007 Dodge Caliber**  
#C3668B 38,000 Miles  
**\$13,995**  
\$256.06\* PER MO./48 MOS.



**2011 Cadillac SRX AWD**  
#G4122A 23,000 Miles  
**\$41,995**  
\$628.62\* PER MO./60 MOS.



**2010 Chevy 2500 Ext. Cab LTZ**  
#U3585A 14,000 Miles  
**\$37,995**  
\$568.75\* PER MO./60 MOS.



**2005 Buick LaCrosse CXL**  
#U4170A 72,000 Miles  
**\$10,995**  
\$262.24\* PER MO./36 MOS.



**2010 Ford Edge AWD**  
#B4011A 10,000 Miles  
**\$30,995**  
\$463.97\* PER MO./60 MOS.



**2010 GMC 2500 Crew Cab LTZ**  
#C3563A 49,000 Miles  
**\$36,995**  
\$553.78\* PER MO./60 MOS.



**2009 Honda Fit**  
#G3995A 36,000 Miles  
**\$17,995**  
\$269.37\* PER MO./60 MOS.



**2008 Cadillac CTS AWD**  
#G4319A 19,000 Miles  
**\$29,995**  
\$449.00\* PER MO./60 MOS.



**2007 Chrysler Sebring**  
#C4067A 54,000 Miles  
**\$13,995**  
\$256.06\* PER MO./48 MOS.



**2008 Dodge Avenger SXT**  
#G3505B 46,000 Miles  
**\$15,995**  
\$239.43\* PER MO./60 MOS.



**2011 Chevy 3500 Express**  
15 Passenger Van #U4051A 17,000 Miles  
**\$30,995**  
\$456.10\* PER MO./48 MOS.



**2007 Chevy HHR**  
#C4153A 40,000 Miles  
**\$14,995**  
\$274.36\* PER MO./48 MOS.



1801 2nd Ave. W. Williston, ND  
Call 1-800-888-2927 or 701-577-2927  
Hours: Mon. 8am-8pm Tues.-Fri. 8am-6pm Sat. 9am-5pm

SEE THESE SALES CONSULTANTS FOR QUALITY CAR BUYS!



Pat Murphy Owner Wayne Redford Sales Manager Don Egge Sales Manager Dale Doherty Business Manager Bob Topp Sales Lorne Ray Fleet Manager



Patti Ray Sales John Harty Sales Larry Bennett Sales Justin Davidson Sales Lori Agoston Sales

www.murphymotors.com



