



# The Roundup

PRSR STD  
U.S.  
POSTAGE  
PAID  
The Roundup

(406) 433-3306 or 1-800-749-3306  
Fax (406) 433-4114  
e-mail address:  
roundup@esidney.com

Business Office:  
Located at 111 West Main  
Sidney, MT

Mailing Address:  
P.O. Box 1207  
Sidney, MT 59270

Wednesday, January 11, 2012

Volume 37 • Number 47

## Bergman Retires From MSU/EARC To Accept Position With WREC

By Lois Kerr

After serving 38 years as agronomist, plant breeder and director of the Montana State University's Eastern Agricultural Research Center (EARC) in Sidney, Dr. Jerry Bergman has retired from the MSU university system effective Dec. 31, 2011. Bergman has accepted a permanent position with the Williston Research Extension Center (WREC) as director of the facility, a position he has held on a part time basis for the past 18 years. Bergman began his duties with WREC on Jan. 1, 2012 and will oversee dryland and irrigated crop research and the pure seed production.

Bergman made the switch to the Williston center for a variety of reasons, with the principal reasons pertaining to budget issues and size of the respective centers. "I decided to take this step and the big factor is budgets," Bergman remarks. "The budget for WREC is \$1.6 million, while the budget for the EARC is \$423,000. Unlike the EARC, which has had no funding for capital equipment and no funding for seasonal workers, Williston has money for equipment and has funding to hire seasonal help."

He continues, "The WREC also has 160 acres of irrigated land at Nesson Valley and 800 acres of dryland at the research center. We also will lease an additional 500 acres of dryland with a high water table. The EARC in Sidney has 110 irrigated acres and 40 acres of dryland. With the larger budget and more land at the Williston center, possibilities for expanded research at the WREC are much higher."

The WREC currently tests 22 different dryland and irrigated crops. Bergman plans to increase cropping system research, along with value added and high value crop research.

Bergman praises the North Dakota legislature with its vision for agriculture. "Statewide, North Dakota appreciates agriculture and supports ag research," he remarks. "North Dakota is a strong supporter of agriculture and makes a larger investment in agriculture and agricultural growth than does Montana."

Bergman will leave his safflower research behind, but he hopes MSU continues



Jerry Bergman

to grow and develop what he has established in safflower breeding and development. Bergman also plans to continue the cooperative effort between the EARC and the WREC. "The three independent research programs we had at the EARC were safflower, sugarbeets and durum," Bergman states. "We cooperated with the WREC as Williston tested durum, winter wheat, and early generation safflower for the EARC, and at the EARC we tested early generation malt barley and corn under irrigation to help develop improved irrigated malt barley and corn for the MonDak. My hope is that all the research will continue, and I will do everything I can to strengthen and continue this cooperation, not only with the EARC but also with the USDA/ARS Northern Plains Agricultural Research Lab in Sidney. I also hope we can continue to share resources to avoid duplication and to get the best use we can from staff, facilities and equipment. My view is that whatever advances can be made at any of our agricultural research centers benefits and en-

hances the MonDak region." He adds, "I would have preferred to continue the formal cooperative relationship

between MSU and NDSU that we had going for the past 18 years, but that is not an option."

## Watford City Chamber & Economic Development Corp. Annual Meeting Scheduled For Jan. 11

The Watford City Area Chamber of Commerce and Watford City Economic Development Corporation will hold their annual meeting Wednesday, Jan. 11 at Outlaws' banquet room.

A no-host social starts at 5:30 p.m. followed by dinner at 6:30 p.m.

The featured speaker will be Kostas Voutsas, MBA, MSHR/OD, Dickinson State University assistant business professor.

With creativity, humor and real life stories, Voutsas reaches everyone in his audience as he dynamically explores secrets to successful communication when dealing with generational and cultural differences in today's workforce.

Whether working with your colleagues or customers, this keynote will have valuable information that will empower you to break the barriers and prevent unnecessary biases, conflict, stereotyping, and misunderstandings.

Travel with Voutsas to the U.S., China, Mexico, Russia, Australia, Canada and throughout the world and explore strategies to making cultural diversity work. Discover his secrets to managing generational differences. And please, share these secrets with the world!

Voutsas has been teaching Management and Human Resource courses for over 15 years. He is Dickinson State University's (DSU) professor of business in the Bismarck location. He is also an author, a corporate trainer and keynote motivational speaker.

Bergman appreciates the support he has received from the Sidney area and from area ag businesses and interests. "I greatly appreciate my 38 years at the EARC and all the support I've received from ag producers, Richland Economic Development and the community," Bergman concludes. "I also appreciate the strong support from Sidney Sugars and the

MonDak Sugarbeet Growers. They have been outstanding. It is amazing the support the EARC received from them for research. The Montana Wheat and Barley Commission also has strongly supported ag research by providing grants, and safflower companies have also been very good to us."

Bergman will relocate to Williston in the near future.

## Search Continues For Missing Sidney Teacher

Sherry Arnold has been missing since early Saturday, January 7, 2012. She was last seen running on East Holly Street in Sidney, Montana; wearing a blue hooded sweatshirt, red tear-away pants with blue stripes, black mittens & a headband, at approximately 6:40 a.m.

Sherry is 5'10", weighs 140 lbs., has short brown hair, brown eyes and has an athletic build.

Please call the Sidney Law Enforcement at 406-433-2210 or the F.B.I. at 406-433-4026 with any information. If no answer, please leave a message.

Local officials were not available for comment at press time.



Sherry Arnold



Kostas Voutsas, MBA  
MSHR/OD

journals. He also serves as a consultant conducting individualized training/professional development seminars.

His book "Secrets to Making Diversity Work" explores gender, cultural and generational differences in today's workforce. He also writes business articles for the City Magazine. He has a Master of Science degree in Human Resources and Organizational Development and a MBA in General Business.

Tickets for the event are \$25 per person. You may RSVP to the Chamber office by Jan. 9, call Mary at 701-580-1493 or email [wcchamber@ruggedwest.com](mailto:wcchamber@ruggedwest.com).



# Local Artist’s Piece Displayed In Natural History Museum

**By Jaimee Green**  
For one local woman the inspiration to take a still photograph is derived from everywhere and at times, seemingly from nowhere. It can be conjured up from the way the light hits an old abandoned barn or from the way frost gathers on a stumpy head of echinacea. It could be mustered from the way a greasy country mouse looks while running across a dusty floor or from the more obvious and awe inspiring fog rolling over the Missouri River. Capturing these images is a talent and passion Kitty Kolden, an aspiring artist from Wolf Point, indulges in daily.

Lately, that passion and talent is taking her places she never imagined. Several weeks ago, Kolden was notified she was selected as one of the artists hand picked out of 200 photographers and nearly 1,000 images to have her photograph entitled, “Poetry in Motion”, displayed in the San Diego Natural History Museum from early January through May. This designation comes after some coaxing from her friends and family to submit some of her work into the prestigious “Best of Nature” contest. She submitted a total of nine photographs and her piece depicting a snowy battle between

two pheasants was selected. The unique photograph was captured in Kolden’s backyard and was taken as a series of some 500 photographs of the pheasants fighting and eventually battling out of sight. Currently, the Pheasants Forever Journal is looking over some of her work and may be selecting one of her photographs for use as their front cover in an upcoming edition if the image quality meets their standards. When Kolden took the photograph selected to hang in the Natural History Museum, she used a Nikon D-50 but has since upgraded to a Nikon D-90.

“Having a piece selected is a huge honor that took me by surprise. I think it is so rewarding to be able to share this part of me with people because I truly love capturing the world as I see it through my lens,” said Kolden. While Kolden has been avidly taking photographs for several years, it wasn’t until last September that she placed her art in a show in Billings with Sunrise Studio Art Gallery. At the urging of her friend Lance Johnson, gallery co-owner, she contracted to do the show with them through October. “Lance offered me the insight and courage to think big about what I want to accomplish with my photography,” Kolden said.

To get the technical aspects set up in her home, she relied on her husband, Jim, who she proclaims to be the stronger half when it comes to tackling technology. “It isn’t his dream to be a professional artist but he knows it’s mine and he has always supported me in every way he can,” she said. Kolden takes her inspiration from everywhere she travels and originally that was how she began taking pictures and showing them to people. Through her “Kolden Report” she keeps a travel log about places she and her husband visited and sends them off to friends and relatives through an email.

Today, the Kolden Report is read by over 300 recipients in five countries including the U.S., Spain, China, Norway and Denmark. As the report has developed she has included less text and more photographs to help keep her life private but her photography out in the public eye. “I can envision a picture in just about anything. I’ve gotten to work before and taken a picture of a gorgeous sunrise or a bat hanging from the wall of a building. They are documentations of my travels. The one comment I hear repeatedly from people is that we may be looking at the exact same thing but I see it and capture it very differently. Photography for me has always been, the more I look, the more I see with respect to my subject matter,” Kolden stated.

Currently, Kolden is employed at Northeast Montana Health Services. Kolden gets great joy from her photography, but like many artists, she admits she isn’t always in the mood to take pictures. So, if the inspiration isn’t there, she doesn’t attempt to force it. Typically, she takes pictures every day. Many of them she captures in her own backyard. Living out in the country has given her a perfect landscape for creating her pieces. She says Northeast Montana is one of the most uniquely beautiful places she has ever seen and the rugged landscape makes it very easy for her to find subject matter outside to capture. She only photographs people when the opportunity

presents itself and typically only photographs landscapes and wildlife. “I enjoy the spontaneity of a picture. For me it is much harder working with artificial lighting and the fact that you have to make the shot happen when people are the subject. You have to work much harder with that kind of lighting but with nature and natural light everything just seems to fall into place,” Kolden said. She recently published a book on the flooding that took place last spring in Northeast Montana near the Missouri and Milk rivers. Her book titled, “2011, The Year of Water in Northeast Montana” captures the flood through her photography and offers text describing the images.

She is in the process of getting a website developed from her portfolio and hopes to continue pursuing local shows and bazaars. She just finished a show with ArtSpot, Glasgow, and participated in the Wolf Point Optimists’ Bazaar. Professing to be someone who loves variety she enjoys many hobbies including, cooking, reading, knitting, crocheting, traveling,

going to auctions and combining the early morning streets for a good yard sale. She also enjoys visiting schools in hopes of motivating youth to pick up a camera and capture the world through their eyes. “My house looks like a frame shop exploded. There is crafting stuff, cases of glass, stacks of frames, piles of mats and all sorts of stuff out that I am working on. My husband has always been very supportive of everything I do and as long as he has a place where he can set his coffee cup, he is happy,” she said. Kolden will be traveling to California for the opening reception taking place at the Ordovery Gallery in the Natural History Museum and hopes to make some professional connections that will help her reach her goal of becoming a recognized and professional photographer. “The way I see it is that you can always dream, so why not dream big,” Kolden questioned? For more information on Kolden’s artwork or to purchase her book on the flooding, contact bird@midrivers.com or call 406-525-3357.



Kitty Kolden was recently notified that her photograph titled “Poetry in Motion” would be displayed in the San Diego Natural History Museum in California. The photo in the center is the artwork selected for display.



Nikki Carda, esthetician, recently started work at Trendz, Sidney.

## Trendz In Sidney Has New Esthetician

Nikki Carda has recently started working at Trendz, Sidney. Nikki has been an esthetician for six years. Services she offers include facials, microderm abrasion, body wraps, body scrubs, full body waxing and make up. She also offers a skin care line Eminence Organic Skincream and a makeup line called Afterglow. Nikki will be available Thursday-Saturday from 9 a.m.-6 p.m. and other times by appointment. Nikki is married to Derek Carda and they have a two-year-old daughter, Rhylee. Trendz is located at 118 S. Central Ave., Sidney. Nikki can be reached at 406-433-2714.



## Kaila Foss and Ryan Forbes Foss-Forbes Announce Engagement

Kaila Foss, daughter of Jerry and Judy Foss, Sidney, and Ryan Forbes, son of Jim and Therese Forbes, Sidney, and Lynette and Reyburn Johnston, Watford City, wish to announce their engagement. A Feb. 18 wedding is being planned at the Richland County Fairgrounds Event Center.

JANUARY

CLEARANCE

SALE

All Merchandise

Discounted 50-75% Off

Infant Sweat Outfits (pink & blue) (6 mos.-4T)	\$3-\$12
Toddler Sweatshirts (camo & gray/navy) (2T-4T)	\$12
Adult Sweatshirts & T-shirts (Small-5XL)	\$3 <sup>50</sup> -\$20
Jackets & Sweaters	\$3 <sup>75</sup> -\$21 <sup>50</sup>
Junior Tops	\$5-\$21 <sup>25</sup>
Jeans	\$11 <sup>25</sup>
Jogging Suits	\$8 <sup>75</sup>
Leggings	\$6-\$7
Jewelry	\$3-\$4 <sup>50</sup>
Purses	\$10-\$18
Plus Tops	\$6 <sup>50</sup> -\$19

OPEN:

10 a.m.-5 p.m. Mon-Sat

LKfashions

406-433-7799  
102 N. Central Ave.  
Sidney, MT



# TRASHY TUESDAYS Paper & Plastics Recycling Drive January 17

The Recycling Advisory Committee is proud to announce that another plastic and paper drive, known as Trashy Tuesdays, will occur. The drive will be held on Tuesday, Jan. 17 from 3-7 p.m. at Richland County Public Works, 2140 W. Holly St. by the fairgrounds. The community has recycled about 1000 lbs. of office paper, and approximately 900 lbs. of plastics through the use of Trashy Tuesdays. Trashy Tuesdays had their start through the work of the VISTA program and began in earnest in April 2011. The Recycling Advisory Committee was formed in June from volunteers in the community who are committed to ensuring that recycling advances in Richland County. Committee members include Kent Simonis, George Biebl, Russ Huotari, Jackie Couture, Linette and Greg Miller, Jeff Hintz, Cindy Eleson, Darci Haraldson, Randy Olson, Leah Norby, Gary Schaff and Emily Schaff as a representative of FFA.

At the upcoming Trashy Tuesday, the materials to be accepted are plastic bottles and office paper. All plastic bottles have the "chasing arrow" sign on the bottom and inside that sign is a number. At this event, all bottles with the numbers 1-

6 will be accepted. Examples of plastic bottles include water, pop, milk jugs and laundry detergent, dish soap and hair product bottles. As long as the container has a threaded neck which is smaller than the base, it can be taken to the drive. The committee asks that all jugs and bottles be washed out and the lids removed for sanitation purposes. All paper products including junk mail can be recycled with the exception of manila envelopes, cardstock, and bright neon paper. Catalogs and telephone books also cannot be accepted. Community members will sort their own plastics and office paper into labeled bins at this event.

Trashy Tuesdays are scheduled the 3<sup>rd</sup> Tuesday of every 3<sup>rd</sup> month of the year from 3-7 p.m. and a full year of recycling drives is planned in Sidney. Start collecting today for Trashy Tuesday for the coming drive on the 17<sup>th</sup> and continue collecting! The 2012 Trashy Tuesday events are scheduled as follows: April 17, July 19 and Oct. 16. If you are interested in joining the Recycling Advisory Board or would like more information on recycling drives please contact Cindy at 406-488-3341, extension 4 or roi@midrivers.com. Bring your recyclables to Jan. 17 Trashy Tuesday and "toss it our way".

COME CHECK OUT  
OUR ANNUAL  
WINTER SALE!

Up To  
**50% off**  
select merchandise for  
men, women & children!

**Creekside Clothiers**

1555 S. Central • (across from McDonalds) • Sidney • 406-433-3025

## Rocky Erickson To Address Sidney Chamber Banquet

The Sidney Area Chamber of Commerce and Agriculture will have Rocky Erickson, Northern News Network sports director, as their guest speaker for the Chamber's annual banquet on Jan. 23. The banquet will be held at the Richland County Fair Event Center in the Yellowstone Room. A no-host social will be at 6 p.m. with the prime rib dinner at 6:30 p.m.

Rocky Erickson grew up on his family's wheat farm in Vida. He attended high school in Wolf Point and graduated from Liberty University, Lynchburg, VA.

As news operations director of the Northern Broadcasting System he provides a network of over 80 radio stations with news and sports programming. Rocky's daily "Montana Sports" program is heard on over 40 radio stations! He is also an eight-time winner of the "Montana Sportscaster of the Year award" from the National Sportscasters and Sportswriters Association.

He is also the voice of Billings West High football and basketball and Rocky Mountain College football.

Everyone attending is encouraged to put on their favorite team apparel as the Chamber's theme is "Team-Up for 2012". Any business or group is invited to decorate a "Terrific Team" table for the evening as well.

Also highlighting the evening will be reports from the new and past president and executive director. The evening

will culminate with the Chamber award presentations.

Tickets are \$35 each until Jan. 18, and \$40 up to the banquet. Contact the Chamber at 406-433-1916 for tickets or further information.



Rocky Erickson, Northern News Network sports director.

**It's A Get Acquainted Party**

**Friday, Jan. 13**  
Serving  
Sloppy Joes & Hot Dogs  
1-3 p.m.

**Spencer's Art**

102 N Central Ave.  
(in the Yellowstone Marketplace)  
• Sidney, MT • 406-478-0906

## Factory Closeout! Brand New!



1,100 sq. ft. • All Electric • Deliverable within 100 mile radius of Sidney, MT

**\$44,500**  
inc. Delivery & Setup

Call 402-429-0620  
for information & viewing



Crown Tree Homes  
Sidney and Williston

## All You Can Eat Snow Crab Is Back Every Friday Night!

Prime Rib Sandwich On Special Every Day at Noon  
And Includes our Famous Soup & Salad Bar!

**New Line Games with 7's, Bells & Cherries**  
**Bonus Spins For Jackpots In Our Spacious Casino!**

**Celebrate Your Special Occasion With a Fishbowl & Sing Karaoke Every Wednesday, Friday & Saturday Night at 9pm!**

Kids have a varied menu & can now register to win a 23" TV with built in DVD player!



**Restaurant Lounge & Casino**  
207 2nd Ave. N.W., Sidney  
Located across from IGA in Sidney!  
**Jam Session Sundays at 5pm!**  
*Bring Your Instrument!*



**Wednesdays**  
**Large Pizza &**  
**Pail of Beer \$19<sup>99</sup>**

**Fridays**  
**18 Wings &**  
**Pail of Beer \$19<sup>99</sup>**

**Quick Stadium Foods**  
available till close every night!

**22 Plasma TVs for all the**  
**Football Playoffs & NBA League Pass!**  
**Sounddog Speakers right at your table!**



**BuzzTime Trivia Competitions &**  
**Foosball for your entertainment!**

**New Vegas Line Games!**  
**MATCH UP CHERRIES & DOLLARS!**  
**BONUS ROUNDS TO WIN PLENTY OF CASH IN OUR SPACIOUS CASINO!**

**\$1<sup>00</sup> Off**  
**All Beers**  
**"Time Out"**  
**4-6 p.m. Daily**



**& Casino**  
804 S. Central Ave



For all your Farm/Ranch,  
Recreational, Residential,  
and Commercial needs.



**Alan  
Seigfreid**  
**Amanda  
Seigfreid**

Jim & Janice Knudsen 120 2<sup>nd</sup> St. N.E. • Sidney Mt. 59270  
Broker/Owners (O) 406-433-3010 • (C) 406-489-3010  
email: [alans@midrivers.com](mailto:alans@midrivers.com)  
**Website: [www.missouririverrealty.com](http://www.missouririverrealty.com)**



**Yellowstone Chiropractic Clinic**  
(406) 433-4757 222 2nd. Ave. SW  
1-866-433-4757 Sidney, MT 59270



**Dr Ryan Laqua**  
Chiropractic Physician

• Sports Injuries • DOT Physicals

• Personal Injuries & Pain Conditions

Now Showing

**Tues. - Thurs., Jan. 10-12**  
New Years Eve @ 7:30 p.m.

**Fri. - Thurs., Jan. 13-19**  
Alvin The Chipmunks: Chipwrecked  
@ 7:30 p.m. & 1 p.m. Sat.

**Centre Theatre**  
Call Our Hotline for updates • 406-480-6684 (MOVI) • Sidney

Adults: \$6  
Students: \$5  
Matinee \$4

**BINGO, BILLIARDS  
& DART SUPPLIES**

**Inventory Reduction  
Sale On Now!**

25%  
Off

Buy Now While  
Selection Is Best

Pool Cues  
Pool Cases  
Pool Accessories  
Dart Sets & Cases

**203-05 Main Street, Lower Level, Williston**  
Same Entrance As Veteran's Affairs & J's Fashion Threads  
572-6254 or 1-800-732-0962  
Thursday - Saturday 1:30 pm - 5:30 pm  
Call for after or before hours appointments  
**We Recover, Repair & Recondition All Pool Tables!**  
Locally Owned & Operated by Chuck Joseph

**Program Technician**

**Vacancy**

Do you have office skills and/or a farm background? Are you looking for an exciting career? Consider working for the United States Department of Agriculture! The McKenzie County Farm Service Agency, Watford City, ND, is presently accepting applications for a Permanent Program Technician position. The application period will run from Jan. 10, 2012 to Jan. 24, 2012. Interested candidates must submit an application online at [www.usajobs.gov](http://www.usajobs.gov). The application process is quick and easy. Just be sure to include all required information!

In addition to a fulfilling career, the selectee will be eligible for health and life insurance, annual (vacation) and sick leave, federal holidays, health care flexible spending and will be covered by a federal retirement system.

For more information, call Marcy at  
701-842-3628.

The Federal Government is an Equal Opportunity Employer.

## Anna Marynik, 88, Wibaux, MT

Funeral services for Anna Marynik, 88 of Wibaux, MT were at 10 a.m., Thursday, January 5, 2012, at the Carpenter's Church in Sidney, MT, with Pastor Gloria Buxbaum officiating. Interment was held in the Sidney Cemetery under the direction of Fulkerson Funeral Home of Sidney. Remembrances and condolences may be shared with the family at [www.fulkersons.com](http://www.fulkersons.com).

Anna died Saturday, December 31, 2011 at the Wibaux County Nursing Home.

## Jerene "Jackie" Dropps, 75, Savage, MT

Funeral services for Jerene "Jackie" Dropps, Savage, MT, will be at 2 p.m. Wed., Jan. 11, 2012 at Peoples Congregational Church, Sidney, with Pastor Neil Lindorff officiating. Cremation will follow the service under the direction of Fulkerson Funeral Home, Sidney.

Remembrances and condolences may be shared with the family at [ww.fulkersons.com](http://ww.fulkersons.com).

Jackie died Friday, Jan. 6, 2012 at the Sidney Health Center Extended Care Facility.

## Julia Marker, 94, Sidney, MT

Funeral services for Julia Marker, Sidney, MT, are at 10 a.m., Thursday, Jan. 12, 2012, at Ebenezer Congregational Church, Sidney, with Pastor David Meehan officiating.

Interment will be in the Sidney Cemetery under the direction of Fulkerson Funeral Home, Sidney.

Remembrances and condolences may be shared with the family at [www.fulkersons.com](http://www.fulkersons.com).

Julia passed away Friday, Jan. 6, 2012, at the Sidney Health Center Extended Care Facility.

## Ermajean Dennis, 92, Sidney, MT

Mass of the Christian Burial for Ermajean Dennis, 92, Sidney, MT was at 10 a.m., Friday, Jan. 6, 2012 at St. Matthew's Catholic Church with Father Ned Shinnick presiding.

Wake services were at 6 p.m., Thursday, Jan. 5, 2012 at Fulkerson Memorial Chapel.

Interment was held in the Richland Memorial Park Cemetery under the direction of Fulkerson Funeral Home, Sidney.

Remembrances and condolences may be shared with the family at [www.fulkersons.com](http://www.fulkersons.com).

Ermajean died on Friday, Dec. 30, 2011 at the Sidney Health Center Extended Care Facility.

## Jody Verhasselt, 47, Sidney, MT

Funeral services for Jody Verhasselt, 47, Sidney, MT were at 2 p.m., Thursday, Jan. 5, 2012, at Pella Lutheran Church, Sidney, with Pastor George Karres officiating. Cremation followed the services under the direction of the Fulkerson Funeral Home, Sidney, MT.

Remembrances and condolences may be shared with the family at [www.fulkersons.com](http://www.fulkersons.com). In lieu of flowers memorials may be made to: Sidney Fire Foundation or a charity of one's choice.

Jody died on Saturday, Dec. 31, 2012 due to an avalanche while riding his snowmobile.

# STATISTICS

Lake Water Level Reports			
	Fort Peck	Sakakawea	
Current Elevation.....	2236.03	1839.2	
Last Week's Elev. ....	2236.6	1840.9	
One Year Ago .....	2235.6	1841.1	
Release For Day (C.F.S.) .....	12,000	23,000	

Watford City Weather Data			
Source: North Dakota Agricultural Weather Network			
Date	High	Low	Precip.
Jan. 2 .....	27	5	0.00
Jan. 3 .....	35	5	0.00
Jan. 4 .....	50	29	0.00
Jan. 5 .....	53	34	0.00
Jan. 6 .....	60	32	0.00
Jan. 7 .....	41	17	0.00
Jan. 8 .....	38	16	0.00

Sidney Weather Data			
Source: MSU Eastern Agricultural Research Center			
Date	High	Low	Precip.
Jan. 2 .....	38	5	0.00
Jan. 3 .....	51	28	0.00
Jan. 4 .....	56	28	0.00
Jan. 5 .....	61	39	0.00
Jan. 6 .....	51	31	0.00
Jan. 7 .....	38	14	0.00
Jan. 8 .....	38	16	0.00
Average YTD Precipitation .....			0.23
2012 YTD Precipitation .....			0.00

## Dora Rozell, 94, Sidney, MT

Funeral services for Dora Rozell, 94, Sidney, MT, are at 10 a.m. Wednesday, Jan. 11, 2012, at Lonsdale United Methodist Church, Sidney, with Pastor Vicki Waddington officiating.

Interment will be in the Sidney Cemetery under the direction of Fulkerson Funeral Home, Sidney.

Remembrances and condolences may be shared with the family at [www.fulkersons.com](http://www.fulkersons.com).

Dora passed away Saturday, Jan. 7, 2012, at the Sidney Health Center Extended Care Facility.

# 4-H News

**Lambert Hi-Liters Hold Meetings**  
The Lambert Hi-Liters held their third and fourth meetings of the 4-H year on Dec. 11, 2011 at 1 p.m. and Jan. 8, 2012 at 2 p.m. at the Fox Lake Senior Center, Lambert. Roll call was naming your favorite animal and choosing Coke or Pepsi.

We discussed the basketball court project, steer weigh-in, Junior Leaders winter party, project meetings, beef and cheese stick sales and ReCLab.

For new business, we discussed the upcoming county speech and demonstration day, Ag Days livestock judging contest, shooting sports, horse workshop. We also had a leader agree to pick up the club's project materials for distribution to members.

Following the December meeting, Zach did a demonstration on his iPod Touch. We exchanged Christmas gifts then watched movies, and had hot dogs and s'mores for our party.

Following the January meeting, Rita did a speech on different horse disciplines and Sarah did an illustrated talk on Mustang Markings.

Our next meeting is Feb. 12, 2012 at 2 p.m. at Fox Lake Senior Center.

# EVENTS

**SEND US YOUR EVENTS!**  
THE ROUNDUP: PO Box 1207, 111 West Main,  
Sidney, MT 59270  
406-433-3306, Fax: 406-433-4114  
Email: [classads@esidney.com](mailto:classads@esidney.com)

**Richland County**  
Events in Sidney unless otherwise listed. MT Zone.

**Wed., Jan. 11**  
7 p.m. — Gambler's Anonymous, Millers' Corner back room.

**Thurs., Jan. 12**  
5 p.m. — TOPS, Crestwood NW entrance, Weigh-ins 5-5:30 p.m., meeting 5:30-6 p.m.  
6:30 p.m. — Pinochle, Moose Lodge.  
8 p.m. — NA meeting, Millers' Corner banquet room.

**Sat., Jan. 14**  
9 a.m. & 7 p.m.— AA meeting, Trinity Lutheran Church Education bldg., 214 S. Lincoln.

**Sun., Jan. 15**  
10:30 a.m.-1 p.m. — Knights of Columbus Brunch, St. Matthew's multipurpose room. Pancakes & ham, turkey casserole, coffee & juice.  
7 p.m. — AA meeting, Trinity Lutheran Church Education bldg., 214 S. Lincoln.

**Mon., Jan. 16**  
12 p.m. — AA meeting, Trinity Lutheran Church education bldg., 214 S. Lincoln.  
6:45 p.m. — Bingo, St. Matthew's Parish Center multi purpose room.

**Tues., Jan. 17**  
7 p.m. — AA meeting, Trinity Lutheran Church education bldg.  
9 a.m.-12 p.m. — Commodities Distribution, 123 W. Main(Nutter Bldg), west door where the ramp is located.  
3-7 p.m. — Trashy Tuesday, 2140 W. Holly St. across from the fairgrounds.

**McKenzie County**  
Events in Watford City unless otherwise listed. CST Zone.

**Wed., Jan. 11**  
8 p.m. — Al-Anon, Sanford Room, McKenzie Co. Public Library.  
5:30 p.m. — Watford City Area Chamber of Commerce & Economic Development Corporation Annual Meeting, Outlaws' banquet room.

**Thurs., Jan. 12**  
8 p.m. — AA Group, Northern Pump & Compression. Call 770-3603 or 770-2675 for directions or ride.  
9-11 a.m. — MOPS (Mothers of Preschoolers), Wesleyan Church.

**Fri., Jan. 13**  
8 p.m. — Al-Anon, Sanford Room, McKenzie Co. Public Library.

**Tues., Jan. 17**  
1-4 p.m. — Dining With Diabetes, Courthouse Meeting Room.  
2-4 p.m. — McKenzie Co. Food Pantry, First Lutheran Church.  
4-6 p.m. & 6:30-8:30 p.m.— Livestock Judging Workout, Courthouse

See all monthly events at a glance on our online calendar [w.roundupweb.com](http://w.roundupweb.com).

Roundup  
WEB.COM





# Spencer's Arts Opens In Yellowstone Marketplace

Don Spencer, a self-taught free hand artist, from Tooele, UT, along with this family moved to Sidney in October. With 21 years experience he has moved into the Yellowstone Marketplace, 102 N Central Ave., Sidney.

**Pictured left: (L-R) Chantel, Makaylia and Don Spencer**

After having his former office burglarized he set out to start over and ended up in Sidney.

His artwork includes designing logos, air brush, tattoos, painting derby cars, urns, saws, memorial sleds and engraving custom made jewelry boxes.

"My slogan is 'Thoughts are my creations', Spencer says. "The bigger the challenge the more fun I have with it."

"I love doing raffles and anything to help out kids in the area," he states.

His wife, Chantel, also helps out in the studio and

designs business cards, etc.

You may call 406-478-0906 for appointments or visit them at [www.spencersarts.com](http://www.spencersarts.com) for more of their specialties.

A "Get Acquainted" Party is set for Friday, Jan. 13 from 1-3 p.m. in Yellowstone Marketplace.

## Learn The Computer Basics & Earn College Credit!

Do you wish you knew more about computers? Maybe you'd like to send e-mails to your family, but you don't know how to set up an account. With more information moving online every day (did you know you can get almost every tax form the IRS publishes online?), everyone should have a good grasp of the computer basics: how to get started, send an e-mail, use Microsoft Office, browse the web, back up your data and troubleshoot basic problems. You could go online to learn how to do any of those things, but that doesn't work for everyone, so the Sidney-Richland County Library and Dawson Community College will be offering a half-credit course in Computer Basics 101. This "Tech Tuesday" class will last eight hours and meet four times, Jan. 24, 26, 31 and Feb. 2 at 6:30 p.m. Anyone is welcome to attend, and the course is free. But if you want to receive credit from DCC, you must pay a credit registration fee.

Space for this course is limited, so please call the Library at 433-1917 to reserve a spot. If you want to receive credit from Dawson Community College, or if you have any questions about how the credit might apply to a program or continuing education requirements, please contact Mary Ann Vester at 406-377-9409 or [online@dawson.edu](mailto:online@dawson.edu).

Students will work together using the library's laptop lab to learn the basics from a live instructor, and then submit their homework online through UniversalClass. UniversalClass is a collection of 500+ free online courses, available to any patron of the Library covering topics from computers to art to nutrition, and this course will guide you through using UniversalClass to interact with your professor, read lessons and submit assignments online. We will start with the basics of computer hardware, and progress to setting up an e-mail account, creating a document in Microsoft Word, and learning how to navigate websites to get and send information. By the end of the course, everyone should be ready to take more advanced courses through UniversalClass, and use a computer for basics like sending e-mail, saving and backing up files, and getting things done online (from shopping to income

taxes to registering for Facebook). Everyone will earn 1 Continuing Education Unit through UniversalClass, and you can opt to receive credit through Dawson to put toward a degree or continuing education requirements. You do not have to have your own computer, but you will need a library card (which is free to anyone living in Richland County), and you must attend all four sessions to receive DCC credit. The

first class is Jan. 24, so please reserve a space as soon as possible if you would like to attend. If you have any questions, you can contact the Library at 433-1917 or Dawson Community College at 406-377-9409 or [online@dawson.edu](mailto:online@dawson.edu). You can also find more information about this and other Tech Tuesday programs at the Library website - <http://www.richland.org/spl>, and we're also on Facebook!



### Watford City Girls Basketball

Watford City's Sadie Kieson puts up two points against New Town. The Wolves fell to the Eagles 49-59. (Photo by Kathy Taylor)

**HDHP PREMIER**  
**HEALTHLINK**

<b>Deductible/OOP</b>	<b>\$5950</b>
<b>Coinurance</b>	<b>100%</b>
<b>Max Out Of Pocket</b>	<b>\$5950</b>

**Rates Start At:**

**3 Other Options Available**

Rates Valid Through 03/31/2012

Age	Individual Rates
0-5	61.72
6-10	49.37
11-14	52.33
15-18	58.62
19-24	107.01
25-29	114.75
30-34	122.48
35-39	136.66
40-44	150.86
45-49	180.50
50-54	206.29
55-59	237.24
60+	273.34

**Call For Details:**

**Blinda Larsen**

**BlueCross BlueShield of Montana**  
Live Smart. Live Healthy.  
Registered marks of Blue Cross and Blue Shield Association, an association of Independent Blue Cross and Blue Shield Plans. LIVE SMART LIVE HEALTHY is a registered trademark of Blue Cross and Blue Shield of Montana, an independent licensee of Blue Cross and Blue Shield Association.

**Jeana Barnhart**

**Union Gateway Incorporated**  
202 3rd Ave. NW • Sidney  
**488-4366**  
[www.uniongatewayinsurance.com](http://www.uniongatewayinsurance.com)  
Agent is independent of Blue Cross and Blue Shield of Montana, and offers its products only in the state of Montana.

## Introducing Our Karaoke Competition!!

Every Friday night beginning Jan. 6 • 9 p.m.



Top singer each night wins \$100. Top winners invited to come back to win 3 days & 3 nights in Las Vegas (airfare included)

## HI-WAY LOUNGE & GRILL

701-828-3100 • Main Street • Alexander, ND

## Sidney Adult Education Classes Winter Quarter 2012

Classes offered, please call the Sidney High School (433-2330) for details and to register, although registration is also the first night of class.

Mondays & Thursdays, starting Jan. 9  
English as a Second Language - Instructor: Peggy Strupp

Location	Room	Time	Fee
SHS		5:30-7 p.m.	\$30

Mondays & Thursdays, starting Jan. 9  
Introductory Spanish - Instructor: Kim Rojas

Location	Room	Time	Fee
SHS		7-8:30 p.m.	\$30

Tuesdays, starting Jan. 10  
Beading Class - Instructor: Dianne Etzel

Location	Room	Time	Fee
SHS	Commons	6-9 p.m.	\$20

Tuesdays, starting Jan. 10  
Postcards With Pizzazz - Instructor: Quilts & More (482-3366)

Location	Room	Time	Fee
Quilts & More		5:30 p.m.	\$20+\$10 Craft Supply Fee

Wednesdays, starting Jan. 11  
Square Dancing - Instructor: Gene Sondeno

Location	Room	Time	Fee
SHS	Band Room	7-9 p.m.	\$20

Wednesdays, starting Jan. 11  
Finish IT - Instructor: Quilts & More (482-3366)

Location	Room	Time	Fee
Quilts & More		10 a.m.	\$20

Wednesdays, starting Jan. 11  
Men's Volleyball - Instructor: Dennis Marker

Location	Room	Time	Fee
SHS	Gym	7-9 p.m.	\$20

Thursdays, starting Jan 12  
Culinary Education - Instructor: Greg Mohr

Location	Room	Time	Fee
SHS	106	6-8 p.m.	\$30

Thursdays, starting Jan. 12  
Small Engine Repair & Maintenance - Instructor: Gary Schaff

Location	Room	Time	Fee
SHS	507	7 p.m.	\$30

Thursdays, starting Jan. 12  
Horticulture & Landscaping - Instructor: Gary Schaff

Location	Room	Time	Fee
SHS	507	7 p.m.	\$20

Thursdays, starting Jan. 12  
Introduction to Welding & Metal Projects- Instructor: Gary Schaff

Location	Room	Time	Fee
SHS	507	7 p.m.	\$30

**Check the Sidney Public School website for more information:**  
**<http://sidney.k12.mt.us>**  
**Click on Resources.**



# Trenton Railport Progressing

By Jodi McPherson

A large multi-user rail terminal in Trenton, ND, which began construction early 2011, is noticeably progressing. The Bakken Petroleum Hub can easily be seen at Marley Crossing near Trenton on Highway 1804.

The terminal, to be known as Trenton Railport, being served by the Burlington Northern Sante Fe Railway, was designed to bring large-scale rail service to the Bakken Formation with oilfield-related materials such as tubular, frac sand and other strategic materials. This includes the capability to load and ship unit trains of crude oil.

Railways are looking to be a great way for transporting crude oil and other oil related products such as fracturing sand. New rail projects can be seen developing all over the region to serve the increased oil production industry.

The 270-acre site on which the Trenton Railport is being built was secured by Savage Companies in cooperation with Yellowstone Ethanol, LLC. The facilities include rail infrastructure, open space for oil field materials storage, and receiving capability for frac sand and other materials.

Local officials have greatly supported the project, which has employed more than 150 people in various capacities during construction of the terminal and has used local contractors wherever possible. Once operational, Trenton Railport employment on a steady basis is expected to be between 40 and 60 people.

The Bakken Petroleum Hub will be managed by Savage's Railway & Industry Solutions Group, which oversees more than 50 specialty rail services and transloading terminals throughout the U.S.



A large multi-user rail terminal in Trenton, ND, which began construction early 2011, is noticeably progressing. The Bakken Petroleum Hub can easily be seen at Marley Crossing near Trenton on Highway 1804.

Savage provides services to electric power generation, coal mining, oil refining, chemical and Class I railroad customers. It owns and/or operates large terminals for coal, petroleum coke, sulphur, chemicals and other commodities; system-based transportation such as truck, rail, barge and vessel. Savage moves over 50 million tons annually of coal,

coke, waste coal, waste ash and sulphur; and also provides on-site operations and management services for large power plants and oil refiners.

The Trenton Railport is slated to be operational by the second quarter of this year.

## Professional Boxing Returns To Williston Jan. 28

For the first time in almost 20 years professional boxing returns to the city of Williston, Saturday, Jan. 28. Williston State College will host BoomtownUSA Boxing promotions.

The six fight card fea-

tures Joey Abell (27-5 26Kos) and Dave Peterson (12-0 7KOs).

Doors open at 6 p.m. with the first fight to start promptly at 7 p.m.

Ringside VIP tables are available. Reward your em-

ployees, clients and rub elbows with your future customers.

General admission is \$30 (\$20 with student ID) and reserved seating is \$50

For all ticket requests, call 701-609-0433.

## Sidney Health Center Welcomes First Baby Of 2012

Providence Mary Grimmet was the first baby born at Sidney Health Center in 2012. Liza and Larry Grimmet Jr., Sidney, welcomed their baby girl on Jan. 2 at 7:23 a.m. She weighed 8 lbs. 13.5 oz. and measured 20.5 inches long. Providence joins two brothers, Zeke and Carter, and two sisters, Faith and Joy.

For being the first baby

born at Sidney Health Center in 2012, Providence and her parents received a gift basket full of baby items valued at more than \$200 from the Sidney Health Center Volunteers and a \$100 savings bond from Sidney Health Center.

Although Providence was the first baby born in 2012, 2011 was a busy year for the obstetric department.

In the past year, 125 babies were delivered at Sidney Health Center averaging 10 babies per month. Sixty-nine of the babies were girls while 56 were boys.

The Sidney Health Center obstetric and newborn units feature Labor, Delivery, Recovery, Postpartum (LDRP) rooms. These rooms are equipped with jacuzzi tubs and Hill-Rom birthing beds. During labor, options for pain medication are offered. A trained and experienced OB and Nursery Staff is available 24 hours a day.

The obstetric department also offers a One-Day Childbirth Class four times per year. The next childbirth class will be held Saturday, Feb. 4 in Sidney Health Center's classroom from 9 a.m.-4 p.m. Instructors, Lisa Verschoot, RN, and Joyce Schulz, RN, will review the following topics: relaxation, anatomy and physiology of childbirth, types of delivery, anesthesia, breast feeding and child care. The session is free of charge; however, donations up to \$25 are gladly accepted to cover expenses.

For more information about the Sidney Health Center obstetric department, please call 406-488-2146 or visit us online at [www.sidneyhealth.org](http://www.sidneyhealth.org).



Liza Grimmet with newborn Providence Mary Grimmet.

## Nourish Your Skin Lesson Offered

By Marcia Hellandsaas  
NDSU Extension Agent  
McKenzie/Dunn Counties

Do you want to have beautiful skin, minimize wrinkles and look your best as long as possible? Our skin can undergo a lot of stress and taking good care of it is important to putting our "best self" forward as we age.

"Nourish Your Skin" is a new lesson for adults that will be offered at 2 p.m. on Friday, Jan. 20 at the McKenzie

County Courthouse meeting room, Watford City.

This session is research-based and will be taught by McKenzie County Extension Agent Marcia Hellandsaas. The program will help participants learn about various factors that damage skin or decrease the skin's natural barriers. Tips to help foster good skin through nutrition, hygiene and protective measures will be shared. Skin cancer risk factors and

how to perform skin self-checks to detect suspicious skin spots will also be part of the lesson.

Taste tasting and facials will be shared.

Pre-registration is requested prior to attending this free program. Please contact the McKenzie County Extension Office at 444-3451 or e-mail Marcia at [marcia.hellandsaas@ndsu.edu](mailto:marcia.hellandsaas@ndsu.edu) by Wednesday, Jan. 18 if you would like to attend.

**Test Drive One Of These 3 Great Vehicles & Have Lunch On Us\*!**

**Rock In The New Year With A New Vehicle From Eagle Ford!**





**2008 F150 Crew Cab**  
81,815 miles, Arizona Beige

**Only \$19,495**

Stk# 5769



**2007 Ford Expedition Eddie Bauer Edition**  
83,500 miles

**Only \$22,495**

Stk# 5788



**2010 Ford Taurus SEL**  
20,417 miles

**Only \$22,495**

Stk# 5715



**Eagle Country Ford**  
SIDNEY, MT  
Experience the Eagle Country Difference!

\*Receive a voucher for a free lunch.

**215 E. Main • Sidney, MT**  
**406-433-1810**  
**800-482-1810**



# Office Of Surface Mining, Bureau Of Land Management Schedules Meeting With Stakeholders On Proposed Consolidation Jan. 23 In Billings

The Office of Surface Mining Reclamation and Enforcement (OSM) and the Bureau of Land Management (BLM) will hold a series of meetings around the country soliciting input on the proposed consolidation of OSM within BLM.

The outreach is part of an effort directed by Secretary of the Interior Ken Salazar to gather input from stakeholders on the proposal to combine the strengths of both bureaus to continue Interior's efforts to improve government. This is consistent with the Secretary's plan to not move forward with a potential consolidation without full coordination and input of employees, members of Congress, states, tribes, industry, representatives of communities affected by coal production and other interested parties.

These meetings will include discussions on how best to maintain OSM's status as an independent bureau with regulatory responsibilities under the Surface Mining Control and Reclamation Act, while exploring ways to integrate some administrative functions of both entities. A meeting will be held Monday, Jan. 23 at the BLM Montana State Office, 5001 Southgate Dr., Billings, from 8:30-11:30 a.m.

Secretary Salazar has directed the directors of OSM and BLM and other Interior officials to report by Feb. 15 on the consultations with the bureaus' employees, Congressional committees, and interested parties, such as tribes, state regulatory officials, industry, and representatives of communities affected by coal mining. For stakeholders who are unable to

attend the meetings in person, Interior has set up a website to accept comments from the public. For more information or to submit comments, visit <http://www.doi.gov/bureaus/blm-osm/consolidation.cfm>.

For instant updates on OSM, follow OSM on Twitter at [www.twitter.com/OSMRE](http://www.twitter.com/OSMRE) or visit the OSM home page at [www.osmre.gov](http://www.osmre.gov). To see more on BLM, visit [www.blm.gov](http://www.blm.gov).

The Office of Surface Mining Reclamation and Enforcement carries out the requirements of the Surface Mining Control and Reclamation Act of 1977 in cooperation with states and tribes. OSM's objectives are to ensure that coal mining activities are conducted in a manner that protects citizens and the environment during mining, to ensure that the land is restored to beneficial use after mining, and to mitigate the effects of past mining by aggressively pursuing reclamation of abandoned coal mines.

The BLM manages more land – over 245 million acres – more than any other Federal agency. This land, known as the National System of Public Lands, is primarily located in 12 western states, including Alaska. The Bureau, with a budget of about \$1 billion, also administers 700 million acres of sub-surface mineral estate throughout the Nation. The BLM's multiple-use mission is to sustain the health and productivity of the public lands for the use and enjoyment of present and future generations. The Bureau accomplishes this by managing such activities as outdoor recreation, livestock graz-

ing, mineral development and energy production, and by conserving natural, historical, cultural, and other resources on public lands.

McKenzie County Area

## Food Pantry

Free food assistance for you and your family

All income eligible McKenzie County residents welcome!

No Referral necessary  
Minimal personal information requested  
No ID's required

**January 17, 2012**  
**2 pm to 4 pm**  
Open the afternoon of the 3rd Tuesday of each month!

Also open the 1st Tuesday evening of each month from 5 pm to 7 pm

**Located in the lower level of**  
**First Lutheran Church in Watford City**  
**212 2nd Ave NW**

For more information or to set up an appointment to visit the pantry call  
**701-444-3451**

**Pantry includes a wide variety of:**

- frozen meats
- canned goods
- personal care items



## Northeastern Arts Network Proudly Presents “The String Jumpers” Thursday, Jan. 12

The Northeastern Arts Network will be presenting “The String Jumpers” concert Thursday, Jan. 12 at the Sidney Middle School Auditorium at 7 p.m. The concert is part of their Big Sky Concert series.

The String Jumpers are a collection of jazz and acoustic musicians from Bozeman. The band came together with a common affinity for swing and early jazz, believing that the first half of the 20th century was one of the greatest eras of songwriting and genre-creation ever. Their members include accomplished jazz veterans and hot young acoustic musicians, with their modus operandi to have fun and enjoy each others' company.

Veteran musicians include Craig Hall on upright bass and hollow body electric, Krista Barnett singing pure, authentic interpretations, and Adam Greenberg holding down percussion

with great flair and precision. Younger musicians include Ian Fleming, a student at MSU, playing leads on his Beourgeois guitar, and James Schlender belying his age (he was 15 when he started this project) with violin solos that help define the band. Doug Schlender, James' father, fills it out with rhythm guitar on a super-fine Weber arch top.

Don't miss this exhilarating performance of classics from the swing and big band eras along with new compositions performed with violin, guitar, mandolin, bass,

drums and pure vocals.

Tickets prices at the door: adults \$15, senior \$13, and students \$10. For additional concert information contact Candy Markwald 406-488-4155, Jill Hill 406-488-3845, or Karen Boehler 406-433-4375.

The Big Sky Series is made possible in part by the Montana Performing Arts Consortium Presenter Development Program which is supported by grants from the National Endowment for the Arts, Montana Arts Council and legislative grant from Montana's Cultural Trust.



String Jumpers

Be The First To View This New Arrival!

\$123,153

Delivered & Set Up In Montana



4 Bedroom/2 Bathroom • Living Room • Activity Room • Office  
Stainless Steel Appliances • Drywall Throughout • Approx. 2100 sq.ft.

**Iseman Homes**  
Since 1920

2308 W. Front St. • Williston, ND 58801  
**701-572-2590**

**KEY INGREDIENTS**  
*America by Food*

### Key Ingredients:

## America by Food

### A Smithsonian Exhibit

at the Pioneer Museum of McKenzie County

**Today-January 22, 2012**  
**10 am - 6 pm**

*Key Ingredients: America by Food explores the connections between Americans and the foods they produce and present at table – a provocative and thoughtful look at the historical, regional, and social traditions that merge in everyday meals and celebrations.*

**Read & Discuss!**  
Join us as we discuss Barbara Kingsolver's  
**“Animal, Vegetable, Miracle”**  
Facilitated by **Dean Hulse**  
North Dakota Humanities Scholar and author of the book “Westhope: Life as a Former Farmboy”  
**Wednesday, January 18, 2012 @ 7 pm**  
Pioneer Museum of McKenzie County

**Jan Dodge**  
Pioneer Museum of McKenzie County in Watford City, ND  
701-444-5804 [jdodge@co.mckenzie.nd.us](mailto:jdodge@co.mckenzie.nd.us) [tourism.mckenziecounty.net](http://tourism.mckenziecounty.net)  
Museum on Main Street is a collaboration between the Smithsonian Institution and the North Dakota Humanities Council.







Jon Redlin Dana Jonsson Wade Whitman

Call Today for all Your  
AG LENDING NEEDS

Sidney, Montana: 433-8600

**Stockman Bank**  
MONTANA BANKING. PURE & SIMPLE.  
[WWW.STOCKMANBANK.COM](http://WWW.STOCKMANBANK.COM)

© 2011 Stockman Bank Member FDIC



# Food & Fellowship

**By Jerome Kessler**  
There is something unique going on in Sidney, MT this winter. The Interfaith Outreach Ministry is sponsoring a community-wide effort to provide food and fellowship from Jan. 5 through March 31. Soup and bread will be served from 6-8 p.m. Mondays through Fridays. Hal Campbell, who came up with the idea, says that “the main goal of the program is to reach out to the newest members of our community.” The location of the meals will rotate between different churches and charities.

Les Anderson, the pastor of Assembly of God Church, supported Campbell’s idea, and has sponsored several meetings of local church representa-

tives to get this program off the ground. Assembly of God has been serving Wednesday evening meals in December – which has been a “trial run” to prove that the idea was feasible. The following churches have January meals scheduled: Faith Alliance, Latter Day Saints, Lonsdale Methodist, Lutheran Brotherhood, Pella Lutheran, Saint Matthews Catholic Church, Shepherd of the Valley Lutheran, and Trinity Lutheran Churches. The Boys’ and Girls’ Club will also sponsor a night. It is anticipated that other churches and charities will sponsor meals in the future.

“This is not a handout,” Campbell says; “it is reaching out [to the newest members of our community] with

a hand of friendship.” Many of these newcomers in our community are living in campers and RVs. This could be a long, cold, and miserable winter for them. These nightly meals are also an opportunity for *everyone* to avoid cabin fever. The respective churches may, in fact, want to use their designated night to invite their own membership to “a night out” to dine and congregate.

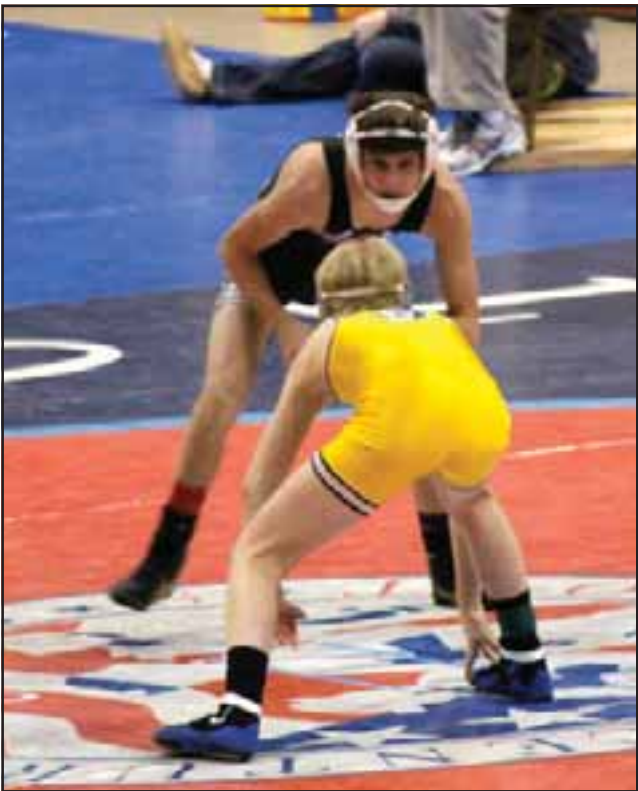
There is no charge for these meals. This program is being generously supported by oil companies and local businesses. An appreciation banner (honoring specific contributors) is being prepared. If you would like to contribute to this cause you may write a check to Assembly Of God Interfaith Out-

reach Ministry.

Nobody knows for sure how many “camper people” will come for these meals. Newcomers should be reassured, however, that these gatherings will not include any preaching or proselytizing.

This program is an opportunity for the different Christian churches in town to focus on their similarities. It embraces the Christian theme of wanting to serve others. It is, in some ways, an experimental program; it is hoped that it will be successful, and will pave the way for other shared ventures in the future.

The schedule of where the meals will be held accompanies this article. There will also be a variety of public service announcements on the radio, local TV stations, and newspapers. Everyone is invited to support this winter warm meal program. If you have any questions (or want to help out) you can call Assembly of God (433-2550) or any of the respective church offices for details.



**Sidney Wrestling**  
Gresh Jones, Sidney, is shown in his championship match against Tommy Walton, Fargo North. Jones won the match 10-6 at the Bismarck Rotary Wrestling Tournament last weekend. (Photo by Kari Jones)

## Order Pizzas Now For Super Bowl Weekend!

Colder weather is arriving here in the county! Do you want to bring back memories of the hot summer days at the county fair? You are in luck if you said yes!

The St. Matthew’s Youth Groups will be taking orders for pizzas! If you had the chance to eat at the pizza booth during the fair then you’ll know why your mouth is watering!! You may order 12-inch size cheese, pepperoni or Canadian bacon pizzas. Cost is \$8 per pizza. Payment is requested at the time the order is placed. Please make checks payable to St. Matthew’s Ministry Fund.

Pizza orders will be taken by youth until Sunday, Jan. 22. Pizzas will be made fresh & sealed – ready for you to pick up on Sunday, Jan. 29 from 10:30 a.m.–12 noon at the St. Matthew’s Parish Center, 310 7th St. SE, Sidney. Pizzas will be ready to take home and bake or freeze for later!

Put your order in with a youth from the church now or call Stacie Olson at the St. Matthew’s Parish Center 433-2510 or on her cell phone 480-0170. This may be the best way to get a taste of summer as you begin the New Year!

## Military News

**Cassidy E. Damm**  
Air Force Airman 1st Class Cassidy E. Damm graduated from basic military training at Lackland Air Force Base, San Antonio, TX.

The airman completed an intensive, eight-week program that included training in military discipline and studies, Air Force core values, physical fitness and basic warfare principles and skills.

Airmen who complete basic training earn four credits toward an associate in applied science degree through the Community College of the Air Force.

Damm is the grandson of Bonnie Damm, CR 129, Sidney.

He is a 2009 graduate of Sidney High School. He earned an associate degree in 2011 from Dawson Community College, Glendive.

## Jore Of Musik To Present January Violin/ Fiddle Concert Jan. 15

The Jore Haus Of Musik will present their violin/fiddle students in concert at the Missouri-Yellowstone Confluence Interpretive Center Sunday, Jan. 15 at 2 p.m. CST.

The concert is free and open to the public. Refreshments will be served. The Confluence Center is located 23 miles SW of Williston on Hwy. 1804.

Come enjoy the view of the Confluence of the Yellowstone and Missouri Rivers while being entertained by these talented students from the area towns. The site also offers two museum quality rooms of local history to enjoy. The Lincoln and the Constitution traveling exhibit from the Smithsonian is on site for viewing.

Check out the specials and new merchandise in the gift shop on site.

For more information contact Kerry at 701-572-9034.

MONTH of JANUARY						
Sunday	Monday	Tuesday	Wednesday	Thursday	Friday	Saturday
1	2	3	4	5	6	7
8	9	10	11	12	13	14
15	16	17	18	19	20	21
22	23	24	25	26	27	28
29	30	31				

Meal schedule

Comment on stories and “Like” them on Facebook at

Everything Roundup on the web

JOHNSON HARDWARE & FURNITURE'S FAMOUS JANUARY CLEARANCE SALE

all furniture all mattresses all appliances

SAVE ALL MONTH LONG sale starts Jan. 3

42" TV Console \$317.77

50" TV Console \$357.77

60" TV Console \$427.77

La-Z-Boy Reclining Sofa \$1,177.77

La-Z-Boy Recliners \$299.99

King Bed with storage \$877.77

Queen Bed \$777.77

5 Piece Dining Set \$567.77

Sofa Sectional \$1,277.77

FREE Financing O.A.C.

More than 35 dining sets in stock.

More than 25 bedroom suites in stock. Includes dresser, mirror, chest, nightstand, queen size headboard, footboard and rails.

Save up to 60% off dining sets!

JOHNSON HARDWARE & FURNITURE since 1915

Johnson's got it!



HELP WANTED

PART-TIME ADMINISTRATIVE ASSISTANT

The City of Alexander has a job opening for a part-time City Administrative Assistant. Applications are available at the city office or send a resume to the City of Alexander. Applicant must be able to multi-task, people oriented, have computer background & will be required to do general office duties. There will be random drug testing. Contact the city at 701-828-3461 or e-mail your response to cityofalexander@ruggedwest.com.

JANITOR WANTED!!

Looking for full or part-time help. Duties include sweeping, mopping, dusting, vacuuming, deep cleaning & other duties as requested. Wages are negotiable. Apply at Sidney Cleaners and

Laundry, 121 2nd Ave NE, Sidney. 406-433-1405.

ADMINISTRATIVE ASSISTANT

If you love to meet the public, answer questions, work hard & have fun this Administrative Assistant position with the Sidney Area Chamber of Commerce & Agriculture is for you. Computer proficiency in Quickbooks, Word, Publisher & Excel preferred. Experience in Dreamweaver a +. Contact the Sidney Job Service to apply. Salary DOE.

AD REPRESENTATIVE

Be a part of the most effective media outlet in the MonDak/Bakken region. The Roundup newspaper is looking for an enthusiastic, go-getter that doesn't mind having an unlimited earning potential. Represent a successful regional newspaper in western North Dakota that has

been a mainstay of the MonDak/Bakken area for 30 years! Employee will service existing accounts with some work to gain new business. Commission and salary options are available with the possibility to earn more than an oilfield job. Send resume and applications to The Roundup, PO Box 1207, Sidney, MT 59270 or apply at local job service.

RN/LPN

Trenton Community Clinic is seeking a full-time Licensed Practical Nurse (LPN) or Registered Nurse (RN) with a current ND license (or able to obtain) & current CPR certification. Must be proficient with HIPAA guidelines & patient confidentiality, assessing patient health problems & needs, develop & implement nursing care plans. Must be proficient in maintaining accurate & detailed reports & medical

records. May also advise patients on health maintenance & disease prevention or provide case management. Must consult & coordinate with all other health care team members. Must have valid driver's license & be willing to travel. Hours are M-F, 8 a.m.-4:30 p.m. Job announcement closes on Jan. 15, 2012. For more information or to apply, send cover letter & resume to Cheryl Donovan, CEO Tribal Health, PO Box 210, Trenton, ND 58853 or email to cdonoven@nccray.net

HELP WANTED

Full & part time cooks & bartenders, Hi-Way Lounge, Alexander, 701-828-3100.

HELP WANTED

In store help wanted. McKenzie Building Center, Watford City. 701-444-3665.

CARRIERS WANTED

Need extra cash or want to get some exercise? We have carrier routes available in most parts of Sidney. New motor route just opened. Call Linda to apply or fill out application at The Roundup.

BUSINESS OPPORTUNITY

START YOUR OWN BUSINESS-RETAIL OR OFFICE

Retail & office space is now available in Yellowstone Marketplace, Sidney's new downtown mall. Modern mall units are located in historic building in the heart of downtown at Main St. & Central Ave. Call Russ Wells, 406-489-7431.

FOR RENT

FOR SALE/RENT

14x70 trailer. Option to rent lot it sits on. 406-798-3620 or 406-489-3627.

RV SPACE

RV space available in year round park. Wi-Fi & cable included! Call Today! 406-253-0451.

FURNISHED STUDIOS

Fully furnished studio apartments! Wi-Fi & cable included! \$350/wk. Call Today! 406-253-0451.



Your local Bible Book Store. If we don't have it, we'll order it for you.

119 So. Central Sidney, MT

**406-433-3355**  
www.carpentersstorehaus.com  
www.gloriasdiscovery.com



**DON'T GET CAUGHT OUT IN THE COLD!**

- RV MAINTENANCE, REPAIR & WINTERIZING
- 24 HR. ON CALL TECHNICIAN
- AVAILABLE 7 DAYS A WEEK
- DISCOUNTS FOR SENIORS & MILITARY

**CALL BRANDON WEBB**  
**406-939-4789**

ADMINISTRATION ASSISTANT/RECEPTIONIST HELP WANTED

The Roundup has an immediate opening for a full time administration assistant/receptionist Monday-Friday. Experience with Pagemaker, Microsoft Word & Excel programs a plus. Will be answering phone, waiting on customers, some book keeping work and entering classified ads. Friendly family working environment. Wages depend on experience and education. If interested, apply at the Sidney Job Service and take necessary basic tests.


Lost Dog - REWARD



“Shredder”  
Blond Pomeranian  
Chihuahua  
1ft. high • 1 ft. long  
2 Year Old Male  
\$200 Reward  
Call 489-0100

**--Public Notice--**

Nortana Grain Co. in Lambert MT. is seeking bids for the demolition and removal of the Nortana grain elevator, annex, scale room, attached feed shed and offices located in Lambert beginning in 2012. All services in the current facility will be discontinued in 2012. Please contact the general manager, Tondel Beery at 406-774-3331 or cell 480-3535 for details. No services plan to be interrupted. All services will continue but moved to the new office/shop building in January of 2012. Parallel to the demolition, a new state of the art portable seed cleaner, modern grain handling equipment, and a feed shed will replace the facility.



**406-774-3331**  
**406-433-3014**

**LAMBERT-SIDNEY**



**SIDNEY HEALTH CENTER**  
*Exceptional Care for Life*

Sidney Health Center is accepting applications for the following positions:

- Activities Aide
- Resident Assistant Lodge
- Transcriptionist
- Physical Therapy Assistant ECF
- Registered Nurse
- Surgical Technologist

For additional information or to apply online, please visit our website at:  
**www.sidneyhealth.org**

- or contact -

**Marilyn Olson**  
216 14th Ave SW • Sidney, MT 59270  
Phone: (406) 488-2571  
mjolson@sidneyhealth.org



**HELP WANTED**

**Netzer Law Office is seeking a part-time legal secretary/legal assistant for 20 hours per week. Applicants should be computer knowledgeable and familiar with word processing. Interviews will be scheduled based upon an applicants resume and writing sample in a type written cover letter turned in to Netzer Law Office. Salary DOE.**

**S&S Motors**

*\*See the CLEARANCE tag specials!\**

2010 Ford F250 Lariat, 5k mi., crew/short .....	\$39,995
2011 Chevy Traverse LTZ, black, DVD, 24k mi.	\$38,995
2010 Ford F250 Lariat, FX4, red, 33k mi. ....	\$37,995
2011 Ford F350, white, flatbed, 37k mi. ....	\$37,995
2008 Chevy Tahoe LTZ, maroon, DVD, sunroof, 44k mi. .	\$36,995
2009 Chevy Suburban LTZ, gray, DVD, 57k mi. ..	\$36,995
2009 Ford F150 Platinum, silver, 36k mi. ....	\$35,995
2011 GMC Acadia, red, htd. leather, 26k mi. ....	\$35,995
2009 Dodge Ram 3500, diesel, long box, 55k mi. ..	\$34,995
2010 Chevy Suburban LT, maroon, htd. leather, DVD, 40k mi. ....	\$34,995
2011 Ford Edge Ltd., black, htd. leather, 22k mi.	\$33,995
2011 Dodge Ram, Laramie, red, Nav., sunroof, 18k mi.	\$33,995
2011 Ford F150 XLT. red, 6k mi., crew .....	\$32,995
2009 Ford F250 XLT, white, 42k mi. ....	\$29,995
2010 Ford Edge Ltd., gray, htd. leather, 35k mi.	\$29,995
2008 Buick Enclave CXL, blue, DVD, 48k mi. .	\$29,995
2009 Chevy Silverado 1500, gray, 24k mi. ....	\$28,995
2011 Ford Edge SEL, blue, 33k mi. ....	\$27,995
2008 Ford F150 Lariat, white, 55k mi. ....	\$26,995
2008 Ford F150 XLT, red 32k mi., crew .....	\$26,995
2007 Chevy Silverado 1500 LTZ, red, 56k mi.	\$26,995
2011 Ford Escape Ltd., red, htd. leather, 27k mi. ....	\$25,995
2008 Ford F550, white, 88k mi. ....	\$23,995
2008 Ford F550, white, 78k mi. ....	\$23,995
2007 Chevy Tahoe, silver, 97k mi. ....	\$22,995
2011 Ford Escape XLT, gray, 38k mi. ....	\$21,995
2008 Subaru Legacy, 52k mi., AWD .....	\$14,995*
2006 Cadillac DTS, silver, htd. leather, 81k mi. ..	\$14,995
2006 Ford Mustang, convertible, blue, leather, 76k mi. ..	\$10,995
2005 Buick LeSabre, light blue, 95k mi. ....	\$8,995
2005 Dodge Grand Caravan, blue, DVD .....	\$7,995*
2002 Buick Park Avenue, silver, 99k mi. ....	\$7,995
2001 Mazda Tribute, black, manual, 117k mi. ....	\$5,995
2002 Pontiac Bonneville SE, tan, 165k mi. ....	\$4,995
2004 Ford Freestar, silver, 132k mi. ....	\$4,995
1994 Dodge Ram 1500, gray, 122k mi. ....	\$3,995

**www.sandsmotorsinc.com**

444-2341 or Toll Free - 800-584-9205 • Watford City, ND

**Save Time & Money with Great Communication!**

**Mobile Radios**

- 25 to 110 watts
- 8 to 128 channels
- small, easy to use

**Starting at \$359.00**



**Hand Helds**



**TK-2302**  
Hand Held  
5 Watts w/ Scan



*Nice selection of portables!*

**We can find a place to make it fit!**  
Call Larry today at....  
Just North of McDonald's • Sidney, MT  
406-433-1659 or Toll Free 1-866-433-1659





**PREBUILT HOMES**  
BUILT IN SMALL TOWN USA &  
MOVED TO YOUR TOWN ASAP!

For more information contact:  
**Toby Romo** at 406-769-2094  
[romocarpentry.com](http://romocarpentry.com)

HOMES BY  BAINVILLE, MT

**NEU CONSTRUCTION, INC.**

Oil Field Roads & Locations  
• Reclaim Work  
• Gravel & Scoria Hauling

Fairview, MT  
**406-742-5549**

**LONG X BOTTLE SHOP**

In-store specials every week. Check out our hard ice cream!

8 a.m.-9 p.m. Mon.-Sat. Hwy. 85, Watford City  
1-5 p.m. Sun. 701-444-3335  
(Located in Long X Visitors Center)

**TAYLOR Ag Service**

Kent Taylor, Owner  
Watford City, ND  
701-444-3772  
Licensed in ND & MT

**RTC**  
Smarter. Better. Faster.

[www.RTC.coop](http://www.RTC.coop)  
VOICE • DATA • VIDEO

**HURLEY'S OILFIELD SERVICES**

• Potable Water • Sewer System  
• Loaders • Communications  
• Backhoe • Trucking  
• Skid Houses • Porta Potties

406-742-5312  
Fairview, MT

# Sports Booster WEEKLY SCHEDULE

## Basketball

**Thursday, Jan. 12**  
Watford City Boys vs Mandaree at Mandaree, 7 p.m.

**Friday, Jan. 13**  
Culbertson vs R&L at Lambert, Girls at 6 p.m., Boys at 7:30  
Fairview vs Circle at Circle, Girls at 6 p.m., Boys at 7:30  
Froid/Lake vs Westby/Grenora at Westby, Girls at 6 p.m., Boys at 7:30  
Savage vs Brockton at Brockton, Girls at 6 p.m., Boys at 7:30  
Sidney vs Laurel, Girls at Laurel, 7:30 p.m., Boys at Sidney, 7:30 p.m.  
Watford City vs North Shore Plaza at North Shore, Girls at 7:15 p.m.

**Saturday, Jan. 14**  
Bainville Boys at Williston State College, 7:30 p.m.  
Culbertson vs Froid/Lake at Med Lake, Girls at 6 p.m., Boys at 7:30  
Fairview vs R&L at Fairview, Girls at 6 p.m., Boys at 7:30  
Sidney vs Billings Central, Girls at Billings, 4 p.m., Boys at Sidney, 4 p.m.  
Watford City vs Divide County at Williston State College, Boys at 7:45 p.m.

**Tuesday, Jan. 17**  
Froid/Lake vs Plentywood at Med Lake, Girls at 6 p.m., Boys at 7:30  
Sidney vs Williston at Sidney, Girls at 6:30 p.m.  
Watford City vs Mandaree at Watford City, Girls at 7:15

## Speech & Drama

**Saturday, Jan. 14**  
Sidney at Laurel

## Wrestling

**Friday & Saturday, Jan. 13 & 14**  
Sidney at Cowboy Tourney

**Saturday, Jan. 14**  
Watford City at Beulah Tourney

**Tuesday, Jan. 17**  
Sidney at Miles City, 4 p.m.

## Hockey

**Friday, Jan. 13**  
Sidney Peewee vs Crosby at Crosby, 4 p.m.  
Sidney Bantam vs Williston at Williston, 7 p.m.  
Watford City Jr Gold vs Mayport at Watford City, 8 p.m.  
Watford City Girls vs Bismarck at Watford City, 6:30 p.m.

**Friday - Sunday, Jan. 13&15**  
Sidney Girls 12U at Mandan Jam at Dickinson

**Saturday, Jan. 14**  
Sidney Mites/Termites Cross Ice Games at Sidney, 8 a.m.  
Sidney Squirts vs Williston Orange at Williston, 11 a.m.  
Sidney Bantam vs Minot Wolves at Sidney, 1 p.m.  
Sidney Jr Gold vs Mayport at Sidney, 7 p.m.  
Watford City Peewee vs Williston at Watford City, 1 p.m.  
Watford City Bantam vs Minot Maroon at Minot, 2:30 p.m.  
Watford City Jr Gold vs Langdon at Watford City, 5 p.m.  
Watford City Girls vs Bottineau at Watford City, 3 p.m.

**Sunday, Jan. 15**  
Sidney Peewee vs Williston at Williston, 1 p.m.  
Sidney Bantam vs Minot Wolves at Sidney, 3 p.m.  
Sidney Jr Gold vs Langdon at Sidney, 11 a.m.  
Watford City Bantam vs Minot Gold at Minot, 1:15 p.m.

## Gymnastics

**Friday & Saturday, Jan. 13&14**  
Sidney vs Bozeman Blizzard at Bozeman

# Support Your Favorite Team

**M&M Cafe**

All buses and fans call ahead for later hours!

1721 S. Central Ave. Sidney  
**406-433-1714**

**Dragon Wheel Cafe & BBQ**

Hours:  
6 a.m. - 7 p.m. Mon. - Sat.  
6 a.m. - 2 p.m. Sun.

Fairview, MT  
742-5200

Be Sure To Thank  
The Sports Booster  
Schedule Sponsors  
On This Page

**POWDER KEG**

Family Dining

Fairview  
406-742-5180

Open at 4:30 p.m. Tues.-Fri.  
2 p.m. Sat. & Sun.

**HOT STUFF PIZZA**

**FOOD ON THE GO**

**Farmers Union Oil Co.**  
101 S Main • Watford City  
701-444-3639

We Support All The Area Teams!

Member FDIC

Main St. • Alexander • 701-828-3338  
100 N Main • Watford City • 701-842-2381

**FOR RENT**  
Office space, 1050 S. Central Ave. Call Harvey, 406-433-6143 or 406-480-2367.

**SERVICES**  
**PAMPERED CHEF**  
Heather Giese, Independent Consultant for The Pampered Chef, 406-769-2225 or visit [www.pamperedchef.biz/heathergiese](http://www.pamperedchef.biz/heathergiese).

**MECHANICAL SERVICES**  
Most repairs, minor & major, on cars & pickups. Call Bryan 406-478-4073.

**COMPANIES**  
Need a place to conduct your business? We can accommodate your needs. Great Sidney location near Hwy. 16. 406-488-4338 for more info.

**HOT SHOTTRUCKING**  
Haul Lass, LLC is now servicing the area. Delivering anywhere, anytime! Reliable, responsible & local! Give me a call at 406-480-0126 or 406-488-6613, email

[hoffhd@hotmail.com](mailto:hoffhd@hotmail.com) or fax 406-488-6107. Dianna Hoff, Hauler.

**AZURE MONUMENTS**  
Grave covers, markers, all colors & sizes, custom designs, scenes, final dates, pictures. We sell monuments, no extra charge for lettering. 406-766-2326. Box 2, Froid, MT 59226 or 863-494-0136, 406-790-0338.

**WELDING**  
Welding & repair work. No job is too small. Portable welder, reasonable rates. 701-444-2936.

**FARM & RANCH FOR SALE**  
Alfalfa hay round bales for sale. 406-433-8946 or 406-489-0130.

**FOR SALE**  
'06, Flexicoil 67XL sprayer, 90 ft. 1500 gals. w/wind screens & 2 sets of tires, 14.9x46 24.5x32. Asking \$30,000. 406-583-7558.

**FOR SALE**  
'09 Harsh 470 Mixer feed wagon w/scale, exc. cond. 701-828-3507. Milt Madison Alexander.

**Employment Opportunity**

Richland Federal Credit Union is looking for a career minded individual to fill the position of a loan secretary. Prospective applicant should have experience with Excel and Word, good organizational skills and understanding of agriculture. Applications are available at the Sidney Job Service. EOE.



**SY Soren**  
New! AgriPro's Highest Return Per Acre

**Kelby**  
High Protein and Complete Agronomics

**Jenna**  
The Yielder with Protein

**Reeder**  
Good Yields and Protein Under Wide Ranging Conditions

**SY Tyra**  
New! AgriPro's Sootly Tolerant Variety

**Brennan**  
Balanced With High Yield and Protein

**SY605 CL**  
High Yield CLEARFIELD® Spring Wheat

**Trapeze Yellow Pea**  
New High Yielding Variety with Good Height and Standability

**SKOV SEED**  
Randy Skov | Fairview, MT  
406-747-5217 Home | 406-489-0165 Cell

Call Today! **AgriPro**

**VERMEER HAYING EQUIPMENT**  
See us today for all your haying & feeding equipment, sweeps & Farm Oil. Anderson Vermeer Sales & Service. Open Mon.-Fri., 8 a.m.-5:30 p.m. 701-828-3358 or 701-828-3482 after hrs., Alexander.

**MISCELLANEOUS FOR SALE**  
**FOR SALE**  
Brand new size 22 wedding dress. White w/red detailing. Matching veil & tiara. Girls' size 6 matching flower girl dress. Bought in '07 & both have never been worn & have never touched the ground. Purchased for over \$1,000, asking \$600 OBO for everything. Call Erin 406-480-3834.

**FOR SALE**  
Hobart commercial double deck convection oven, double deep fryer, 6' commercial hood, exhaust & 5 suppressant system. Call Russ at 406-489-7431.

**FOR SALE**  
Welder wire feed 250 amp. w/cart (century), \$1000. 406-489-0064.

**FOR SALE**  
18ft. trailer 3500 lb. axles spare tire loading ramps \$2900. 406-489-0064.

**VEHICLES FOR SALE**  
**GOODTRUCK**  
'97 Ford F-250, 7.3 turbo diesel, automatic, 4WD, long box, crew cab, great cond.! \$7,500. 406-752-5250.

**HEMI**  
'07 Dodge Durango, automatic, under 59k mi., V-8 hemi, great cond.!, \$15,900. 406-752-5250.

**FOR SALE**  
'05 Honda Accord, 2 dr., charcoal, 75k mi, car starter, satellite radio, AC. 406-489-2231, leave message if no answer.

**TRUCKS**  
Off lease pickups, utility trucks, SUV's. Wholesale.  
[www.glendivesales.com](http://www.glendivesales.com)  
800-726-6763

**Earn Some Extra Cash**  
From Now Intil Mid-February &  
**Pay Off Those Christmas Bills!**

Sidney Sugars Incorporated is accepting applications for campaign factory positions. The jobs are available until all beets and juice are processed, about mid-February.

**\$13.31/hour**  
**Bid jobs \$14.67/hour and higher**  
**Opportunity for advancement to full time positions**  
**On the job training**  
**Overtime may be available**  
**Employee Referral Program**

Apply in person or request an application from Sidney Sugars Incorporated - 35140 County Road 125 - Sidney, MT 59270. Phone: 406-433-9320.

 **Sidney Sugars**  
INCORPORATED

Walk-ins are welcome!  
Equal Opportunity Employer  
Drug Free Workplace



**WANTED**  
**WANTED**  
Handmade products for the Country Outlet in the Yellowstone Marketplace Mall. Accepting any artwork or crafts. Contact Russ Wells, 406-489-7431.

**WANTED TO BUY**  
Deer or elk antlers, brown or white. Sheds, racks or mounts. Toll free 1-866-245-9139 or 406-951-0671.

**Lunch Menus**  
**Richey Schools**  
**Wed., Jan. 11:** Super salad bar.  
**Thurs., Jan. 12:** Hamburgers, fries, fruit cocktail.  
**Fri., Jan. 13:** Pizza bar & salad bar.  
**Mon., Jan. 16:** Chicken nuggets, gems, peas, oranges.  
**Tues., Jan. 17:** Chili, hot dogs, peaches.

**Sidney School**  
**Wed., Jan. 11:** Corn dogs, potato smiles, jello, mixed fruit.  
**Thurs., Jan. 12:** Pork roast, potatoes w/gravy, dinner rolls, peach cups.  
**Fri., Jan. 13:** Chicken quesada's, spanish rice, pineapple tidbits.  
**Mon., Jan. 16:** Burritos, potato rounds, apricots.  
**Tues., Jan. 17:** Chicken tenders, potatoes w/gravy, diced carrots, pull aparts, mixed fruit.

**Rau School**  
**Wed., Jan. 11:** Teacher pick day.  
**Thurs., Jan. 12:** Pizza subs, salad, fruit, pudding.  
**Fri., Jan. 13:** Soup, cheese bread, fruit.  
**Mon., Jan. 16:** Chicken Alfredo, green beans, mixed fruit, bread, milk.  
**Tues., Jan. 17:** Sloppy joes, gems, carrots, fruit.

**E. Fairview School**  
**Wed., Jan. 11:** Chicken burger, potato wedges, lettuce salad, peaches.  
**Thurs., Jan. 12:** French bread pizza, lettuce salad, fresh veggies, jello/fruit.  
**Fri., Jan. 13:** Chili, fresh veggies, apples or oranges, corn, bread.  
**Mon., Jan. 16:** Chicken nuggets, lo-mein noodles, corn, strawberry cups, bun.  
**Tues., Jan. 17:** Taco pasta bake, lettuce, salad, apples, bun.

**Fairview School**  
**Wed., Jan. 11:** Cheeseburger, potato, green beans, fruit.  
**Thurs., Jan. 12:** Super salad bar.  
**Fri., Jan. 13:** Burrito, nachos, fruit, cookie.  
**Mon., Jan. 16:** Lasagna, tossed salad, fruit, breadstick.  
**Tues., Jan. 17:** Chicken broccoli, rice casserole, creamed corn, fruit, bun.

**Culbertson School**  
**Wed., Jan. 11:** Chicken, au gratin potatoes, mandarin oranges.  
**Thurs., Jan. 12:** Pizza, corn, peaches.  
**Fri., Jan. 13:** Tomato soup, turkey croissant, oranges, cookies.  
**Mon., Jan. 16:** NO SCHOOL  
**Tues., Jan. 17:** Hot dogs, chips, peas, grapes.

**Bainville School**  
**Wed., Jan. 11:** Chili, cheese sticks, bread sticks.  
**Thurs., Jan. 12:** BBQ meatballs, baby bakers, veggie & fruit.  
**Fri., Jan. 13:** Grilled cheese, tomato soup.  
**Mon., Jan. 16:** Chocolate chip pan-cakes, grilled chicken on a bun, rice pilaf, 5-way veggies.  
**Tues., Jan. 17:** Stew, cheesy breadsticks, fruit.

**Lambert School**  
**Wed., Jan. 11:** Polish sausage, fries, corn, applesauce.  
**Thurs., Jan. 12:** Tacos, fresh veggies, fruit.  
**Fri., Jan. 13:** Soup, sandwich, fruit.  
**Mon., Jan. 16:** Chicken fajitas, fresh veggies, cake.  
**Tues., Jan. 17:** Grilled cheese, tomato soup, crackers, apples.

**Froid School**  
**Wed., Jan. 11:** Meat loaf, au gratin potatoes, green beans, buns.  
**Thurs., Jan. 12:** Chicken & rice, fruit jello, biscuits.  
**Fri., Jan. 13:** Beef stew, pears, corn bread, brownies.  
**Mon., Jan. 16:** NO SCHOOL  
**Tues., Jan. 17:** Lasagna, lettuce salad, bananas, texas toast.

# THE SAVINGS JUST GOT BIGGER

\$\$\$\$\$\$\$\$\$\$\$\$

BIGGER

\$\$\$\$\$\$\$\$\$\$\$\$

83

2011'S REMAINING

\* Includes all applicable discounts and rebates. Includes trade allowance rebate. Trade must be 1999 or newer, includes owner loyalty. Must own 1999 or newer GM vehicle. Need not trade it in.





1801 2nd Ave. W.  
Williston, ND  
Call 1-800-888-2927 or 701-577-2927  
Hours:  
Mon. 8am-8pm  
Tues.-Fri. 8am-6pm  
Sat. 9am-5pm

MURPHY MOTORS INC.

25 YEARS

1987-2012

SEE THESE SALES CONSULTANTS FOR QUALITY CAR BUYS!



Pat Murphy

Dealer

Wayne Radford

Sales Manager

Don Egge

Sales Manager

Dale Doherty

Business Manager

Bob Tapp

Sales



Patti App

Sales

John Hasky

Sales

Larry Stewart

Sales

Justin Courbass

Sales

Lori Agelino

Sales

www.murphymotors.com

2011 SILVERADO  
3500 2WD  
CHASSIS/CAB

MSRP \$37,070  
\*MURPHY'S PRICE \$30,036



#C3263

SAVE \$7,034

2011 SILVERADO  
1500 4WD CREW  
LTZ

MSRP \$44,895  
\*MURPHY'S PRICE \$36,169



#C3934

SAVE \$8,726

2011 TAHOE  
4WD LT

MSRP \$50,055  
\*MURPHY'S PRICE \$42,938



#C3788

SAVE \$7,117

2011 SILVERADO  
1500 4WD EXT CAB  
LT

MSRP \$35,585  
\*MURPHY'S PRICE \$27,389



#C3422

SAVE \$8,196

2011 SILVERADO  
2500 4WD LTZ CREW  
DURAMAX

MSRP \$56,330  
\*MURPHY'S PRICE \$49,988



#C4023

SAVE \$6,342

2011 SILVERADO  
2500 4WD EXT CAB  
LT

MSRP \$41,760  
\*MURPHY'S PRICE \$34,418



#C3777

SAVE \$7,342

2011 SILVERADO  
3500 SRW 4WD  
REG CAB

MSRP \$37,180  
\*MURPHY'S PRICE \$30,086



#C3675

SAVE \$7,094

2011 SILVERADO  
3500 4WD CREW CAB  
LT DUALY/DURAMAX

MSRP \$54,305  
\*MURPHY'S PRICE \$45,488



#C3375

SAVE \$8,817

2011 SILVERADO  
3500 SRW 4WD  
EXT CAB

MSRP \$41,760  
\*MURPHY'S PRICE \$34,302



#C3895

SAVE \$7,458

2011 TRAVERSE  
AWD 2LT

MSRP \$39,970  
\*MURPHY'S PRICE \$35,724



#C3993

SAVE \$4,246

2011 SIERRA  
1500 4WD CREW  
SLT

MSRP \$43,695  
\*MURPHY'S PRICE \$34,894



#C3541

SAVE \$8,801

2011 YUKON  
4WD SLT

MSRP \$53,395  
\*MURPHY'S PRICE \$45,710



#G3532

SAVE \$7,685

2011 SIERRA  
1500 4WD  
EXT CAB

MSRP \$36,370  
\*MURPHY'S PRICE \$27,932



#G3719

SAVE \$8,439

2011 ACADIA AWD  
SLT 2

MSRP \$47,885  
\*MURPHY'S PRICE \$42,844



#G3457

SAVE \$5,041





Termite Attack

Watford City Oilers’ Termites attack the puck as they show off their hockey skills during a zam break at the Jr. Gold game in Watford City on Sunday. (Photos by Kathy Taylor)

Celebrating Chocolate Tickets Now On Sale

Tickets are now on sale for “Celebrating Chocolate”, which will be held Saturday, Feb. 4 at the MonDak Heritage Center, 120 3<sup>rd</sup> Ave. SE, Sidney.

Tickets are \$20 for MonDak members and \$25

for non-members. Join at the time of purchase to take advantage of the reduced ticket price.

“Celebrating Chocolate” is an event featuring the music of Charlie Denison, a silent auction and of course,

lots of chocolate.

Proceeds from this event bring live performing arts to Sidney.

Along with chocolate and live music there will be savory treats, wine, stout and ice cold milk.



Bantam Hockey

Watford City Bantam hockey players celebrate after the overtime goal by Jonathan Dunn in Friday night’s game against Sidney. The Oilers scored 4 minutes into the 10-minute overtime for a 5-4 win over the Rangers. (Photo by Kathy Taylor)



Watford City Oiler’s Dalton Wright fights for position in front of the net in Sunday’s game against the Fargo Flames. The Oilers were defeated by the Flames 7-4. Next action for the Oilers is Friday Jan. 13 against the Mayport Ice Dawgs and Langdon Blades on Saturday, Jan. 14.

Shepherd Of The Valley Lutheran Church Schedules Chili & Corn Bread Meal Sunday

Shepherd of the Valley Lutheran Church, Sidney, will be holding a Chili and Corn Bread Meal, Sunday, Jan.15 at the church at 211 E. Holly St. from 4:30-6:30 p.m.

A Family Game Night will follow the meal. The church is sending a team of nine people to Bangladesh with the Jesus Film Project in February and the proceeds will go to help fund the trip.

Everyone is invited.

MonDak

Days

& Trade Show

Trade Show Hours:

Thu: Noon to 6:00 pm

Fri: 9 am - 3 pm

A sampling of our 40 plus Trade Show vendors!

Advanced Communications

BI Vetmedica

Tri-County Implement

Safe Money Solutions

Action Auto / Eagle Country Ford

Pulse USA/Safflower Tech

Summa Equipment Inc.

DES / Stockman Bank

Sidney Job Service / BestSel Mktg

Richland County Farm Bureau

Federation / Pepsi

Lewis Cattle Oilers

United Pulse

Montana Farmers Union

Trendler Enterprises

BHC / Northwest Farm Credit

Sidney Chamber / State Grain Lab

Norborna/CHS / Mon-Kota

Anderson Veterinary Sales

Betaseed Inc.

Gutter Topper of N. Dakota

Crop Production Services

Corbin Distributing

David Halvorson

Tri County Implement

Agri-Industries

R & J Ag Supply

USDA/ARS NPA&L

Mass. River Irrigation

Accelerated Genetics

FTC Company (Helly Seeds)

Exclusive Home Products LLC

MT Dept. of Labor & Industry

JOIN US!

2012

January 12 - 13

The Event Center

Richland County Fairgrounds, Sidney, MT

THURSDAY, JAN. 12

(Break Sponsor: Farm Bureau Federation)

8:00 - 11:00: HOME, GARDEN, FAMILY PROGRAM

8:00 De-Clutter and De-Stress – Ways to get organized and stay that way

Judy Johnson, Richland County Extension Agent

8:45 Tidying up your tax drawers. Margaret Bradley, H&R Block

9:15 Hoophouses and High Tunnels: Extending the Season of Plenty.

Bruce Smith, Dawson County Extension Agent

10:00 Planning – The “P” Word Can Be Simple and Easy.

Edwin Haugen, Financial Associate, Thrivent Financial

11:00 The true carbon footprint of beef production.

Dr. Judith Capper, Asst. Prof. of Dairy Science, Washington State University

Noon Lunch Break / Trade Show Opens

1:00 Factors Affecting Cow Herd Efficiency. Dr. Andy Roberts, USDA-ARS, Ft. Keogh

2:00 Increasing sheep production. Larry Pilster, American Sheep Industry

3:00 Impact of oil wells on livestock production in the MonDak region.

Dr. Michelle Mostrom and Dr. Jon Ayers, North Dakota State University

4:00 Dry Redwater Rural Water Authority update

5:00 Social (sponsored by Prewitt & Company and First Bank)

6:00 Banquet at Event Center: Beef dinner followed by Trent Loos

FRIDAY, JAN. 13

(Break Sponsor: Crop Production Services)

7:00 - 9:00 Chamber Breakfast

8:00 - 3:00 Ag in the Classroom (at Sidney High School - Sponsored by Tri-County Implement)

9:00 - 10:30 WATER ISSUES: What happened at the Ft. Peck Dam in 2011?

Darrin McMurray, Army Corps of Engineers

Permits needed to work on or near perennial streams.

Cathy Jueaus or Shannon Johnson, Army Corps of Engineers

The 310 permitting process. Laurie Zeller, MT DNR, Conservation Districts Bureau

10:30 Precision agriculture practices that you should be using on your farm.

Jeff Nesbit, Precision Ag Partners

11:30 Making equipment more efficient. Lawrence Papworth, Alberta Agriculture and Rural Development Ag Tech

12:30 Lunch Break

2:00 Properly setting up your beet harvester. Sidney Sugars

banquet speaker

TRENT LOOS

Advocate for Agriculture

Thursday, Jan. 12

Event Center

Banquet at 6:00 pm

Tickets - \$30.00 ea.

Available at:

– Stockman Bank

– Richland Co. Extension Office

Our Event Sponsor

Stockman Bank

Trent is a 6th generation farmer and passionate advocate for agriculture on the radio, the Internet, in print and as a public speaker. He will discuss food production issues at this year's Ag Days Banquet.

Ag Days Sponsor

Boehringer Ingelheim

For more info on Ag Days events, contact Tim Fine at 406-433-1206 or look us up on the web at: [www.mondakagdays.com](http://www.mondakagdays.com)

Moving Sale

• 16' Trailer

• Kitchen Table & Chairs (Light colored wood)

• Coffee Table • Wood Bench

• End Tables • Various Dressers

• King Size Bed w/Memory Foam Mattress

• Twin Size Bed w/3 Drawers

• Space Heaters

• Portable AC units/Dehumidifiers

• Kids Computer Desk w/Chair

• Outdoor Glass Table w/4 Chairs

• Gas Grill • Lawn Mower

• Misc. Power Tools

• Couch • Sofa

• (2) Double Bookshelves, Matching

• Canon Printer/Copier/Scanner

• Lamps

• 5 DVD Player w/Surround Sound System

• Entertainment Center

• Garage Shelving System (Heavy Duty Plastic)

• Filing Cabinet

• Gym System (Bench Press, Free Weights, etc.)

• La-Z-Boy Recliner

• Wheelbarrow • Large Pet Kennel

• Many Area Rugs

Call 702-415-5348

Items located in Sidney, MT