

The Roundup

PRSRT STD
U.S.
POSTAGE
PAID
The Roundup

(406) 433-3306 or 1-800-749-3306
Fax (406) 433-4114
e-mail address:
info@roundupweb.com
www.roundupweb.com

Business Office:
Located at 111 West Main
Sidney, MT

Mailing Address:
P.O. Box 1207
Sidney, MT 59270

PRSRT STD
ECRWSS
U.S. POSTAGE
PAID
EDDM RETAIL

Local
Postal Customer

Wednesday, July 29, 2015

Volume 41 • Number 24

Richland County Members Participate At Montana 4-H Congress

Submitted by Josie Evenson

Eight 4-H members proudly represented Richland County at Montana 4-H Congress from July 7th to 10th. Montana 4-H Congress provides youth from across the state an opportunity to come together on the Montana State University campus in Bozeman and participate in an event like no other. Congress offers both youth and adults a venue in which to learn, be challenged, and most of all, have a great time with their peers. Montana 4-Hers have been attending an event like Congress for over 77 years. Congress has become an important tradition for many 4-H members across the state. The eight members that represented Richland County were: John Carpenter, Brady Gorder, John Helmuth, Jake Kunda, Tess Ler, Taylor Schepens, Taylor Searer and Kyle Topp. Carpenter, Gorder, Helmuth, Ler, Schepens and Searer all represented Richland County 4-H as ambassadors. Helmuth competed in the Livestock judging and received 5th place in the state contest. Tess Ler and Kyle Topp both competed in the Demonstrations and Illustrated Talks contest. Topp received a blue for her Illustrated Talk on Buck Brannaman and Ler took 2nd place over all with her Demonstration titled "Decoratively Delicious." Taylor Schepens and John Carpenter represented Richland County in the Quilting Contest. Schepens received 4th place and Carpenter was named the state contest winner. With this honor, she won a trip to National 4-H Congress in Atlanta Georgia this fall.

Congress Participants from Richland County. Back Row from left to right: Taylor Searer, Jake Kunda, John Helmuth. Front row: Taylor Schepens, John Carpenter, Tess Ler and Kyle Topp. Not pictured Brady Gorder



Sidney Sports Physicals Aug. 10-11

Dr. Michael Fink and Dr. Ryan Laqua will be conducting sports physicals on Monday, Aug. 10th and Tuesday, Aug. 11th from 5-8 p.m. at the Sidney High School wrestling room (entrance at rear of the school). The cost will be \$25 per physical. All student/athletes intending to participate in Sidney Public Schools sponsored athletic activities MUST have a current MHSA physical form on file to be permitted to engage in any activity. This is the only time this service will be offered by the SPS this academic year. All proceeds from the physicals by Dr. Fink and Dr. Laqua will be donated back into the SPS Athletic Fund.

Sidney High School fall season schedule, 1st practice for golf is Thursday, Aug. 13 and football, cross country and volleyball Friday, Aug. 14.

Sidney Middle School fall season schedule, fall sports parent meeting is Monday, Aug. 17, 6:00 pm in the Sidney Middle School Auditorium. 7/8 grade football and volleyball 1st practice is Wednesday, Aug. 19. Any questions contact the Sidney High School Activities Office at 406-433-2330.

Sidney ARS Plans Plant, Insect ID Station At Fair

By Beth Redlin

Wondering just what kind of bug that is? Or that funny looking plant? Concerned that you may have unwanted weeds or insect pests encroaching on your garden or field? Bring your samples to the Richland County Fair and get them identified.

Insect and plant specialists with the USDA Agricultural Research Service's Northern Plains Agricultural Research Laboratory (NPARL) in Sidney MT, will be on hand Friday evening of the fair to help identify plant or insect samples brought in by interested fairgoers. The plant and insect identification station will be held at the NPARRL fair booth located at the front of the Agricultural Building from 6-8 pm on Friday, August 7.

Interested persons are encouraged to bring their plant and insect samples for identification at that time, although they can also drop off samples throughout the four-day fair for analysis. Insect samples are best brought in plastic or glass jars or containers while plant samples can be brought in plastic or paper bags (paper is best for moist samples). It's also best to have a sample of the whole plant, including roots and flowers wherever possible, to speed identification.

To further speed identification, forms asking for additional information on where a particular plant or insect was collected, along with surrounding habitat and other details, will be available, both at the booth during the fair and ahead of time at the NPARRL website (www.ars.usda.gov/pa/nparrl). As noted above, persons unable to participate on Friday can bring in samples earlier and drop them at the NPARRL booth for analysis. You will be asked to provide a phone number or email address so that we can contact you with the results. We will do the same for those samples researchers are unable to fully identify on Friday.

For more information, contact Beth Redlin at 406-433-9427 or 406-433-2020 or by email at beth.redlin@ars.usda.gov.



Johren Carpenter with her first place quilt.

Boys & Girls Club Backpack Program



The Boys & Girls Club of Richland County has partnered with IGA to help with the Backpack Program for the 2015-16 school year. We will be sending home sacks of easily-prepared food items on the last day of each school week to provide nourishment over the weekend for kids who may be depending upon the school lunch program for meals. Reese & Ray's IGA has

set up a donation table in their store with two configurations of food. Shoppers at IGA may add the cost of a bag of food to their grocery bill at checkout to support this project. Monetary donations can also be sent to Boys & Girls Club, PO Box 416, Sidney, MT 59270. Any questions can also be directed to the Club at 433-6763 or e.stedman@richlandbgc.org.



Janet Sergent
Real Estate
Loan Officer
NMLS ID# 525727

REAL ESTATE FINANCING
For Home Purchases & Refinancing
Stop in today and see Janet Sergent in Sidney



Richland
FEDERAL CREDIT UNION

www.richlandfcu.com
201 West Holly St. • Sidney, MT (406) 482-2704
18 East 2nd St. Culbertson, MT (406) 787-5890



Yellowstone Chiropractic Clinic
(406)-433-4757 222 2nd. Ave. SW
1-866-433-4757 Sidney, MT 59270



Dr. Ryan Laqua
Chiropractic Physician &
Certified Medical Examiner

• Sports Injuries • DOT Physicals
• Personal Injuries & Pain Conditions



Richland County 4-H

would like to thank XTO Energy Inc. for sponsoring:

- The trip to Montana 4-H Congress
- The Richland County Jr. Trip
- Richland County 4-H Showmanship Clinic and Jackpot
- Tri County Sewing Camp
- Best of Fair awards at the Richland County Fair and Rodeo

Help Celebrate

Steve & Pat Wick's
★★★★★★

40th Wedding Anniversary
Saturday, August 1st
Girard Hall - 7pm
Dance To Live Music
(By Shotgun Creek)



No Gifts Please

AREA RECOVERY GROUPS

MONDAYS:
12 p.m. — AA Group Trinity Lutheran Church Ed. bldg., 214 S. Lincoln Ave, Sidney.
1 p.m. - 3 p.m. — Grief Recovery Support group at Glory of the Lord Family Ministries, Watford City.
6 p.m. — Al-Anon, Trinity Lutheran Church Ed. bldg., 214 S. Lincoln Ave, Sidney.
7 p.m. — Fairview Alive and Kicking at Faith Alliance Church, 704 S. Western Ave.
8 p.m. — AA Group, Northern Pump & Compression, Watford City. Call 770-3603 or 770-2675 for directions or ride.

TUESDAYS:
7 p.m. — AA Group Trinity Lutheran Church Ed. bldg., 214 S. Lincoln Ave, Sidney.

WEDNESDAYS:
5:00 p.m. — Sober Life Young People's NAAA 12- step recovery group, 25 yr. old & younger, Trinity Lutheran Church Ed. bldg., 214 S. Lincoln Ave, Sidney.
8 p.m. — Al-Anon, Sanford Room, McKenzie Co. Public Library, Watford City.

THURSDAYS:
7 p.m. — NA meeting, MonDak Trucking office Bldg., 725 W. Holly, Sidney.
8 p.m. — AA Group, Northern Pump & Compression, Watford City. Call 770-3603 or 770-2675 for directions or ride.

FRIDAYS:
12 p.m. — AA, Trinity Lutheran Church Ed. bldg., 214 S. Lincoln Ave, Sidney.
12 p.m. - 1 p.m. - AA meeting, basement of Wilmington Lutheran Church, Arnegard.
6:30 - 7:30 p.m.- 5 Stones faith based recovery meeting, Sidney Nazarene, 606 9th St. SW, Back door is open.
7 p.m. — Fairview Alive and Kicking at Faith Alliance Church, 704 S. Western Ave.
8 p.m. — AA meetings, Trinity Lutheran Church Ed. Bldg, Sidney.

SATURDAYS:
7 p.m. — AA 24 hour group, Northern Pump & Compression, Watford City. Call 770-3603 or 770-2675 for directions or ride.
9 a.m. & 7 p.m. — AA Group Trinity Lutheran Church Education bldg., 214 S. Lincoln Ave, Sidney.

SUNDAYS:
7 p.m. — AA Group Trinity Lutheran Church Ed. bldg., 214 S. Lincoln Ave, Sidney.

STATISTICS

LAKE WATER LEVEL REPORT
Sakakawea

Current Elevation.....	1844.5
Last Week's Elev.	1844.7
One Year Ago	1846.5
Release For Day (C.F.S.)	21,000

SIDNEY WEATHER DATA
Source: MSU Eastern Agricultural Research Center

Date	High	Low	Precip.
July 20	83	53	0.00
July 21	92	58	0.01
July 22	95	61	0.00
July 23	82	62	0.00
July 24	89	53	0.00
July 25	92	54	0.02
July 26	92	58	0.00
Total YTD Precipitation	7.85		

Elsie Gedrose, 85,
Sidney, MT

Mass of the Christian Burial will be celebrated for Elsie M. Gedrose, age 85, of Sidney, at 10 am, Wednesday, July 29, 2015 at St. Matthew's Catholic Church in Sidney, MT. Burial will be in the Richland Memorial Park Cemetery under the direction of Fulkerson-Stevenson Funeral Home of Sidney, MT. Remembrances, condolences and pictures may be shared with the family at www.fulkersons.com.

Elsie died Friday, July 24, 2015 at the Sidney Health Center in Sidney, MT.

Steven Cayko, 78,
Williston, ND

Mass of the Christian Burial will be celebrated for Steven D. Cayko, 78, of Williston, at 10 am, Wednesday, July 29, 2015, at St. Joseph Catholic Church in Williston with Father Joseph Evinger as presider. Interment will be at 2 pm, (CDT) in the Fairview Cemetery, Fairview, ND under the direction of the Fulkerson-Stevenson Funeral Home of Williston. Remembrances, condolences and pictures may be shared with the family at www.fulkersons.com.

Steven died on Friday afternoon, July 24, 2015, at his home surrounded by his family.

State Historical Society of North Dakota Makes \$30,000 in Grants Available

BISMARCK - The State Historical Society of North Dakota is now accepting applications for the North Dakota Museum Assessment Program (NDMAP). This program is part of the Cultural Heritage Grant Program and awards grants to local and regional North Dakota museums, providing the opportunity to do an in-depth review of their organization, develop long-range plans, and complete a project. Applications are due by Friday, August 28, 2015. To apply for an NDMAP grant, the museum must be organized to operate on a permanent basis for educational and historical purposes and care for historical objects and materials. The museum's objects and materials must be available to the public through regular exhibits or programs in the facility that it owns and operates. Also, the museum must have at least one professional staff member or the full time equivalent whether paid or unpaid whose responsibilities relate solely to the museum's services and operations. The museum must be open on a regular basis with established hours and schedules. Preference will be given to the museum organized as the official county museum, but other eligible museums are encouraged to apply. The grant guidelines and application forms are available at history.nd.gov or by request. For more information contact Grants and Contracts Officer Amy Munson at 701.328.3573 or email at amunson@nd.gov

Sidney Run Club is hosting the 1st Annual Four Freedom Run/Walk August 8th

Submitted by Amanda Piatte

Walk or Run for this Patriotic Event Run The World- Sidney Run Club is hosting the 1st Annual Four Freedom Run/Walk. Please note, registration is open until start of the event. Proceeds from this event are going to the Flags of Honor program here in Sidney, remembering heroes who served for us. We invite everyone to dress up in his or her best red, white, and blue attire. Prize for best dressed, age group awards, and lots of door prizes! This event also offers chip timing! Signup online at RunSignUp.com, cost is \$30 and the website is set up for donations as well. This 4 mile event will start and end at Healthworks and is open to all ages. It's during the fair on Saturday, August 8th. Packet pick-up and day-of-registration starts at 7:45am with the event starting at 9am.

History Alive! featuring A.T. Packard at Chateau de Mores State Historic Site

MEDORA - A.T. Packard, the editor of Medora's 1880s newspaper, Bad Lands Cow Boy, will appear at the Chateau de Mores State Historic Site, Medora, the weekend of August 8-9. Portrayed by Donald Ehli in the popular History Alive! program, A.T. Packard will discuss his life as the editor of the newspaper from 1884-86. The free performances of A.T. Packard will be on the veranda of the Chateau at 10:30 a.m., 1:30 p.m., and 3:30 p.m. (MT).

Ehli holds Bachelor of Arts and Bachelor of Science degrees in theatre arts from Dickinson State University, and has worked at the Chateau de Mores site since 2001. He is an abstractor with the Dickinson Guaranty and Title Company, and an adjunct lecturer in communications at Dickinson State University. Ehli has acted in and directed numerous productions at Dickinson State University and community theatre in Dickinson.

The State Historical Society of North Dakota sponsors the History Alive! program to explore the lives and times of decades gone by. Begun in 1988, the unique program combines the theater arts with history. The character monologues, about 20 minutes in length, are based on original letters, diaries and other documents, many from the archives of the State Historical Society of North Dakota.

For more information, contact the Chateau de Mores State Historic Site at 701.623.4355 or the State Historical Society of North Dakota at 701.328.2666 or visit the agency's web site at <http://www.history.nd.gov>.

The Roundup Auto Trader

Only \$17 A Week!

If you run it for 2 weeks & it doesn't sell, we'll run it for 2 more weeks..... **FREE!**

1998 GL 1500 SE Honda Goldwing
Excellent condition,
48,000 miles
Call:
406-489-3238



\$5,000

Want to place an ad in the Auto trader?
classads@esidney.com • (406) 433-3306 for details

EVENTS
SEND US YOUR EVENTS!
THE ROUNDUP: PO Box 1207
111 West Main • Sidney, MT 59270
406-433-3306 • Fax: 406-433-4114 • Email: classads@esidney.com

RICHLAND COUNTY
Events in Sidney unless otherwise listed. MT Zone.

July 29th & 30th (evenings)
Richland County Health Assessment – Volunteers will be walking door to door with a short survey. They will be wearing a bright green t-shirt. You may be asked to participate, if so please be courteous. Thank you for your time. If you have any questions please contact the Richland County Health Dept. at 433-2207.

Fri., July 31st
2:00 - 3:00 pm – Giant bubbles in the park at Veteran's Memorial Park in Sidney. Presented by Richland County Health Department Parents as Teachers program. RCHD will provide all the supplies. Event is free and open to all children of Richland County. For more info call Cristin Henson at 406-433-2207.

August 1st & 2nd
Lone Tree Archers 3-D Shoot
Aug. 1st - 8 am till 6 pm
Aug. 2nd - 8 am till 2 pm – The archery range is located about 8 miles east of Sidney, cross Yellowstone River Bridge on Hwy 23, then left onto CR 122. Lunch will be available both days. Shooting fees: Adult \$15/day (\$25 both days), Student \$10/day (\$15 both), Children under 12 free with paid adult, Family \$30/day (\$45 both). Lots of fun for all ages. Call Nancy at 406-488-5128 for more info.

Sun., August 2nd
3:00 pm – Eastern Montana Bible Camp Songfest! All ages are welcome! The song services are at 3 pm and 7 pm with a potluck at 5 pm. A freewill offering will be taken for current projects at EMBC.

RICHLAND COUNTY FAIR & RODEO
AUGUST 5TH - 8TH

August 5th, 7:30 pm – Entertainment by Tigirlily, free admission.

August 6th & 7th, 7:30 pm – PRCA Rodeo. Thursday night is Military Appreciation Night and Friday night is Tough Enough to Wear Pink Night.

August 8th, 7:30 pm – Martina McBride headlines with special guest Love and Theft.

SPORTS PHYSICALS
Mon., Aug. 10 & Tues., Aug. 11th, 5:00 pm - 8:00 pm
Dr. Michael Fink & Dr. Ryan Laqua will be conducting sports physicals at the **Sidney High School wrestling room (rear entrance)** from 5 pm till 8 pm. The cost will be \$25 per physical. All student/athletes intending to participate in Sidney Public Schools sponsored athletic activities MUST have a current MHSA physical form on file to be permitted to engage in any activity. This is the only time this service will be offered by the SPS this academic year. All proceeds from these physicals will be donated back into the SPS Athletic Fund.

GOLDEN VALLEY COUNTY
Sat., August 1st
Home On The Range Champions Ride
Saddle Bronc Match
Home on the Range Arena, in Sentinel Butte, ND. Take I-94, exit 7. Call 701-872-3745, email: www.hotrnd.com.

McKENZIE COUNTY
Events in Watford City unless otherwise listed. CT Zone.
The McKenzie County Food Pantry is open:
1st Tuesday of each month from 5 pm- 7 pm; 3rd Tuesday of each month from 2 pm - 4 pm at First Lutheran Church.
Every Thursday from 12 pm - 2 pm there is food distribution at First Presbyterian Church.

Fri., August 7th
Best of the West Ribfest - Entertainment features Jessie Veeder & the Outlaw Sippin' Gang, Medora's Burning Hills Singers, and Lonesome Willy. All are welcome to come enjoy some ribs with fixings, street vendors, concessions, and classic car and truck show.

WILLIAMS COUNTY
Events in Williston unless otherwise listed. CT Zone.

Sun., August 16th
11:00 am - 5:00 pm – Cowboy poetry & music at the Missouri-Yellowstone Confluence Intrepretive Center.

Thurs., August 20th
7:00 pm – "Forty Years a Fur Trader on the Upper Missouri," by Charles Larpenteur. History Book Club at the Missouri-Yellowstone Confluence Interpretive Center.

August 22nd & 23rd
11: 00 am & 2:00 pm - History Alive! – "Sgt. John Ordway," *Lewis & Clark Expedition 1st Sgt., by Arch Ellwein.* Missouri-Yellowstone Conference Interpretive Center.

View all monthly events on our calendar at:
www.roundupweb.com

Old Dominion Opens Expanded Montana Service Center In Sidney

New Facility Serves Booming Oil Industry And Agriculture In Two-State Region

SIDNEY, Mont. — Old Dominion Freight Line, Inc. today opens its newest service center offering premium services to the majority of oil and agriculture industries in the Montana-Dakota region.

The new Sidney Service Center, located at 775 25th Street S.E., Sidney, MT 59270, replaces a smaller facility at 209 14th St. S.E. The Thomasville, N.C.-based less-than-truckload (LTL) carrier, which is more than 80 years old, has operated in the former facility since 2008.

“Sidney is located right in the middle of the oil boom and the local economy is directly tied to the oil industry,” said Craig Hansen, service center manager for Old Dominion in Sidney. “This will be one of the more advanced service centers of any LTL carrier within a 200-mile radius. The community views our new service center as Old Dominion’s commitment to Sidney. We are proud to be part of the area’s economic growth.”

The state-of-the-art facility, located on an eight-acre site, has 24 doors and features LED lighting throughout the new center.

The Sidney Service Center serves a number of cities in the area, including Williston, Watford City, Stanley, Tioga and Newtown in North Dakota, and Fairview, Sidney, Culberson, Plentywood and Scobey in Montana.

For more information about Old Dominion, visit www.odfl.com or call (800) 432-6335.

About Old Dominion Freight Line, Inc.

Old Dominion Freight Line, Inc. (NASDAQ: ODFL) is a leading, less-than-truckload (“LTL”), union-free company providing premium service to all its customers. OD offers regional, inter-regional and national LTL service. In addition to its core LTL services, the company offers its customers a broad range of logistics services including ground and air expedited transportation, supply chain consulting, transportation management, truckload brokerage, container delivery and warehousing. In addition, Old Dominion offers a consumer product for household moving: OD Household Services. Through strategic partnerships, the Company also offers international freight forwarding services throughout the world. Old Dominion’s claims ratio and

on-time record are among the best in the industry. Establishing one of the strongest industry safety records, OD prides itself on its commitment to not only driver training but many other safety components. For more than 80 years, Old Dominion has been helping the world keep promises.

Recently, Old Dominion was recognized with the following acknowledgements for company leadership in the industry:

Forbes magazine named Old Dominion as one of America’s 100 Most Trustworthy Companies for the third consecutive year and as one of America’s Best Employers.

NASSTRAC honored the company as 2015 Carrier of the Year for the third consecutive year.

SupplyChainBrain named ODFL in its 2015 “100 Great Supply Chain Partners” listing.

Inbound Logistics named the company to its 75 Green Supply Chain Partners (G75) List for the fifth consecutive year.

For the 5th consecutive year, Logistics Management honored OD with the Quest for Quality Award.

Mastio & Company ranked Old Dominion as No. 1 National LTL carrier for the fifth consecutive year.

CIO magazine recognized Old Dominion for IT Excellence with the CIO 100 Award for the fifth consecutive year.



Caring Corner Gift Shop

HUGE LOBBY SALE

JULY 29-31, 2015

FEATURING 50-75% OFF
Home Decor, Christmas, Clothing & Shoes

CARING CORNER GIFT SHOP
A Community Service of
SIDNEY HEALTH CENTER

Wednesday - Friday
9AM - 5PM

Located at Sidney Health Center • 216 14th Ave SW • Sidney, MT • Phone: 488-2122

BACKPACK FOOD PROGRAM



Feed A Kid, Feed Their Mind!
The Backpack Food Program is designed to ensure that children who are in need of proper nutrition, receive healthy snacks and meals and is dedicated to providing these children food during times when the Club or school is not in session or when they are otherwise unable to provide this for themselves.

Healthy Snacks

Healthy Kids

Healthy Minds

BUY A BAG NOW!

(Available at Reese & Ray's IGA)

BOYS & GIRLS CLUB OF RICHLAND COUNTY
200 3rd Ave. SE
PO Box 416
Sidney, MT 59270
Club: 406-433-6763
www.richlandbgc.org
FB: Boys & Girls Club of Richland County

 Boys & Girls Club of Richland County


★ ★ ★ **COME SEE US AT THE FAIR!** ★ ★ ★

Structures To Fit Every Need!

Excavation To Completion, Or Materials Only
DESIGN SERVICES AVAILABLE!



Jim Bell, Manager: 406-480-7249
Mon-Fri: 8am - 5:30pm • Sat: 9am - 1pm | 406-433-1888 | 34940 Hwy 23 • Sidney, MT
www.bbsteelbuilding.com • email: bbmetalbuildings@midrivers.com




Take Time to CHECK YOUR HEALTH!

There are generally no symptoms of high blood pressure, so you usually don't feel it. In fact, nearly one-third of people who have hypertension don't know it. The only way to find out if you have high blood pressure is to get your blood pressure checked on a regular basis.

FREE Blood Pressure and Blood Sugar Checks in the Ag Building


All 4 Days of the Richland County Fair

Fair Booth Hours: Noon - 8:00 PM



SIDNEY HEALTH CENTER
Exceptional Care for Life

216 14th Ave SW • Sidney, MT
Phone: (406) 488-2100
www.sidneyhealth.org

 Find us on Facebook

« PROFESSIONAL BULL RIDERS »»

FIRE fighter's Challenge

Aug 8th, 2015
Watford City, ND
6:00 pm est
McKenzie County Fairgrounds



TOURING PRO DIVISION

SADDLE UP
Advanced Tickets Available:
SADDLE UP WESTERN WEAR
\$18 – adults
\$12 – kids 12 and under
Gate Tickets:
\$20 – adults
\$15 – kids 12 and under

Part of the proceeds donated to Keene Volunteer Fire Dept.

Concessions & Beer Gardens

Stock provided by: Bailey Pro Rodeo

FEATURING:
“Buck Wild,” Guns and Donuts, and several other World Finals Bulls

Sponsors:
McKenzie County Fair Kirkland Inc. F and T Rodeo Saddle Up Western Wear
First International Bank Schantzen Welding IWS Welding
Cenex of Watford City

For More Info call: (701) 400-4534



Cots Donated To Local Red Cross



Unreal RC

The Ultimate in Remote Control Hobbies

Brushless Electric -
Greater Speed and Reliability

**GAS & ELECTRIC CARS, TRUCKS,
PLANES, BOATS AND HELICOPTERS**

701-577-1032
Located In
Chaney's Total Auto

UNION GATEWAY AGENCY

Your Insurance Team
Independently
Representing:

UGA

~Life
~Health
~Medicare Supplement
~Medicare Part D
~Group Health
~Vision
~Dental
~Long Term Care

309 2nd St NW
Sidney MT 59270
phone 406-488-4366
fax 406-630-4433

**BlueCross BlueShield
of Montana**

Aflac

vsp
Vision care for life

©2011 Vision Service Plan. All rights reserved. VSP and Vision care for life are registered trademarks of Vision Service Plan.

www.uniongatewayinsurance.com

Now Seeing Patients in FAIRVIEW, MT

Monday - Thursday: 8:30 AM - 5:00 PM
Friday: 8:30 AM - Noon



JACQUELYN FREE, FNP

Jacquelyn Free is a Board Certified Family Nurse Practitioner who has been working in the area since 2008. Jacquelyn, who is a Fairview native, is taking her practice back home and expanding the clinic hours at the MonDak Family Clinic to better serve the community where she grew up. She provides care for the whole family including DOT physicals, sports physicals, wellness visits, acute and chronic type visits as well as aesthetics. To schedule an appointment with Jacquelyn Free, FNP, please call the MonDak Family Clinic at 406-742-5261.

MONDAK FAMILY CLINIC

An Outreach Service of
SIDNEY HEALTH CENTER

304 S Ellery Ave • Fairview, MT • 406-742-5261

WE COVER THE ENTIRE MONDAK AREA!

No Job Is Too Big or Too Small!

LET US HANDLE ALL YOUR HOME REMODELING!

- Door Repair • Window Installation & Repair
- Custom Glass Replacement
- Any Size Insulated Double Pane Glass
- Custom Shower Doors & Mirrors
- Roof Repair, Painting, Vinyl Siding & Mirrored Walls
- Leaky Windows & Doors



Glass

WATFORD

701-300-0908

"A Better Community Glass & Door Company!"

WWW.WATFORDGLASSANDDOOR.COM

Submitted by Julie Brodhead, MT ARC

Montana American Red Cross local Disaster Action Team (DAT) leader, Mary Anderson, is pictured here on July 13, 2015 receiving a delivery of 10 cots from Dave Garland, Sidney Sugar's General Manager. The 10 cots, all of a "tall person" size, were an in-kind donation from the company and were greatly appreciated. Other Red Cross volunteers, Eldean Flynn, Lana Watson, and Lynn & Kelly Sloan, were on hand to assist with setting up the cots and then getting them into storage. Red Cross DAT members meet on the second Monday of each month at 5:30 PM at the Nutter Building, and the meeting is open to the public. Call 1-800-272-6668 to make a donation by phone or go to redcross.org/montana to make an online donation

Roundup WEB.COM

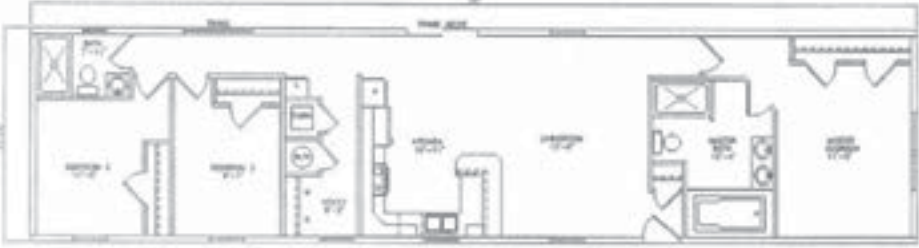
Everything
Roundup on
the web.

MNAXLP

Buy Today... Move In Tomorrow!

- Perfect for your family! This 18'x76' home gives you luxury and affordability in one! See for yourself:
- 1317 square feet!
- 3 Bedroom 2 Bathroom
- 9ft Sidewalls
- Tray ceiling in living room
- Cement board siding
- Breakfast bar
- Patio door
- Entry Closet
- Deluxe master bath
- Transom windows
- Move in Ready!
- This is truly the Cadillac of single section homes!

Magnolia Homes MH-111



Price Reduced
only \$84,995

Move In Ready Homes • Manufactured Home Lots Available
Land & Homes For Sale • RV Spots Available

ISEMAN HOMES WHEATLAND HILLS SUBDIVISION

1026 Juniper ST. • Culbertson, MT | (406) 551-5187 | Mon: 9am-7pm • Tues-Thurs: 9am-6pm • Fri: 9am-5:30pm • Sat: 9am-4pm



Ribfest 2015 Set For Aug. 7 In Watford City

AUTO HAIL REPAIR

BLACKWOOD ESTATES

RESIDENTIAL SUBDIVISION

Beautiful New
Subdivision!

Williston, ND

We specialize in
first time
homebuyers!

Here's what we offer you:

- Extremely low down payments
- Free pre-approvals
- 3 & 4 bedroom homes
- Fully applianced kitchens
- One + and 2 acre lots
- Attached 2 or 3 car garages
- FHA, VA, USDA & conventional loans
- Turn-key

Amenities:

- Five minutes from Walmart
- School bus service
- Park with water feature
- Great views!

For pricing & inventory, give us a call today!

701-264-8022

For housing purchases outside of
Blackwood Estates, please call 701-847-7047

5464 Matthew, Satinwood Model

\$2133 per month!



GAC Financing \$323,400 on FHA loan, includes closing costs

3.5% Down payment required, 4% Fixed 30 yr.

\$222/mo. \$1000 Principal & Interest, \$554.86/mo. one

Estimated Taxes, Insurance, & Private Mortgage Insurance \$589.51 mo.

Premier Home Mortgage, Inc., Cody Work, NMLS #173843

Get pre-approved online!



Largest display of homes!



blackwoodestates.com

Watford City Homes Inc.

877-839-3949

Inventory Blow Out sale. All Homes Must Go.

Watford City
Main Street
4th
12th Street
Watford City
Homes Inc.

\$37,900

\$45,900 Delivered

16 x 80 3 and 4 Bedroom Homes.
2 X 6 wall's R-38 Ceiling, R-19 Walls,
R-21 Floors

\$39,900

1504 4th Ave. NE Watford City, ND

WatfordCityHomes.info

County Agent Update

By Danielle Steinhoff
Elm Trees

The Elm tree is North Dakotas state tree, but lately we have noticed some of them disappearing. With the worry and finding of Dutch Elm Disease (DED) in North Dakota, there has been research done to create a resistant variety. There are no trees that are immune to DED but six varieties that are shown to be able to withstand a present of DED. The state of North Dakota, along with the surrounding states, have trained arborists on how to identify infected trees quickly and what to do to properly dispose of it. This disease actually came over from Asia, therefore the elm trees in Asia have developed some genetic resistance to it. When this disease came over to the United States, it wiped out large populations

because our trees had never been exposed. The University of Wisconsin and the Morton Arboretum in Chicago have incorporated the resistant genes of the Asian elms to the American elms, they have released one of the six varieties that will be listed below.

It is believed that less than 1 out of every 100,000 American elms are genetically resistant to DED, those are quite small odds. The elm trees in your yard, and also the six I will list below, keep them growing vigorously. Keeping them well watered, adding fertilizer when needed and training young trees, by cutting the weak narrow branches will help them grow the strongest and healthiest they could be. The varieties listed below all have dark green foliage, grow fast and have an arching vase-like habit.

- American elm (Ulmus americana)

- 'Jefferson' Very Tall (65' H x 50'W) Zone 4, sterile seeds
 - Prairie Expedition- North Dakota variety, well suited for prairies, Large (55'HW) Zone 2 hardiness
 - St. Croix- Metro Minnesota, Mammoth size (60-75' H x 70-90'W)
 - Japanese Elm (Ulmus japonica)
 - 'Discovery' Manitoba, sturdy, small. (35-40' HW) Slower growth (compared to others) Drought tolerant. Resists leaf beetles
 - Japanese elm hybrids (Ulmus japonica complex)
 - 'Cathedral' Wisconsin origin, very fast growing, must prune, drought tolerate (50' HW)
 - Triumph- Chicago origin, zone 4, very fast growing, sturdy, urban tolerance, (60' x 40' W)
- This information was from the North Dakota State University Yard and Garden Report.

ROOSEVELT COUNTY FAIR

July 30-August 1, 2015

Welcome to the Roosevelt County Fair!

QUALITY SERVICE

CARING PEOPLE

Roosevelt Medical Center

Clinic: 787-6400 • Hospital: 787-6401 | Culbertson, MT

rooseveltmedical.org
Visit us on Facebook!



Culbertson, MT

ROOSEVELT COUNTY FAIR

GROW IT. SEW IT. SHOW IT.

THURSDAY • JULY 30

8.30AM- Horse Judging

5.00PM- Free Corn Feed

FFA Alumni BBQ

Afternoon entertainment provided by the Midway Band

FRIDAY • JULY 31 COOPERATIVE DAY

9.00AM- Livestock Judging

1.00PM- Small Animal Judging

5.00PM- Free meal
sponsored by Culbertson Chamber

6.00PM- 4-H/FFA Livestock Auction

8.00PM- Entertainment with Tigirlily

SATURDAY • AUGUST 1

9.30AM- Livestock Showmanship

1.00PM- Rib Cook-off

1.30PM- Money in the Straw

5.30PM- Ranch Rodeo Calcutta-
Culbertson Saddle Club Hwy 16N

6.00PM- Ranch Rodeo

Children's Entertainment Daily 10am-7pm

Finnicum's

Hardware • Furniture
Appliances • Giftware
Culbertson, MT • 406-787-5213

The Other Place

Family Clothing & Dry Goods
Culbertson, MT • 406-787-5211

Froid Grocery llc.

107 Main • Froid, MT
406-766-2413

Culbertson Pharmacy

Open Mon-Sat 9-5
115 Broadway
Culbertson, MT
406-787-5313
Keith Brisben
Pharmacist

Sidney Sugars

REESE & RAY'S

203 2nd St. NW • Sidney
406-482-3737

RFM
Richland Farm Mutual

Homeowners • Farmowners
Property Coverage
Personal & Farm Liability
ID Theft Recovery

Sidney, MT
406-488-4898
rfmins@midrivers.com

SMOKEY'S
BAR & CASINO

Bainville, MT
406-769-2871

- Landline
- Wireless
- Broadband
- Long Distance
- Nemont.TV
- Business Phone Systems

800.636.8680 • www.nemont.net

Homestead Elevator

Homestead, Froid
406-963-2343

THE DEPOT
Casino
POKER KENO

HAS PIZZAZZ

PIZZA & FINE FOODS

• WE DELIVER •

Hwy. 16 S, Sidney, MT • 406-433-4650

Fulkerson
Funeral Home

315 Second St. NW
Sidney, MT 59270
406-488-2805
email: ffh@fulkersons.com
www.fulkersons.com

WOOD GROUP PSN

Mitchell's is a great place to work! • www.mitchellsoilfield.com

www.richlandfcu.com

Richland
FEDERAL CREDIT UNION

Sidney & Roosevelt County
Office In Culbertson

FARM & HOME
SUPPLY

809 East Main
Sidney, MT
406-433-3400

The Roundup Classifieds

Reach Over 21,000 Readers Each Week In Eastern Montana & Western North Dakota And Always On The Internet at roundupweb.com

(Paypal required for online purchases)

Add a photo to your classy online! (additional charge)

Now Taking Credit Cards!
(5% charge added to all transactions)

Get Up To 30 Words For Just \$9.25 • Deadline: Monday noon

HELP WANTED
PART TIME KITCHEN HELP
The Eagles Club in Watford City is looking for part time kitchen help. Stop in 1 mi south Hwy 85S for an application.

WRITER/EDITOR/REPORTER
The Roundup is looking for a full-time writer/editor/reporter. Salary DOE. Apply at the Sidney Job Service.

CARRIERS NEEDED
Need extra cash or want to get some exercise while getting paid? We have carrier routes available in most parts of Sidney. Call 406-433-3306, or fill out application at The Roundup, 111 W. Main, Sidney.

BARTENDERS WANTED
Enjoy a private club atmosphere. Bartenders needed at the Elks Lodge,

Sidney, MT. Call 406-480-9052.

BUS BID
HORSE CREEK SCHOOL
Horse Creek School board is accepting bids on their bus route for the 2015/2016 school year. The route is approximately 58 miles. All interested parties may place their bid in a sealed envelope and mail it to the following address: Horse Creek School, 1812 Horse Creek Road, Cartwright, ND 58838. Please write the words 'Bus Bid' on the outside of the envelope. All bids must be in by Friday, August 7, 2015. Horse Creek School Board reserves the right to accept or reject any or all bids. If you have any questions you may call John Winter at 701-481-6706.

REAL ESTATE
COMMERCIAL/RETAIL
PROPERTY FOR SALE OR LEASE

Prime commercial retail property for sale or lease. Great parking, excellent location, loading dock with additional warehouse storage. Call for details. 406-480-4405 or 406-478-0000.

5 ACRE COMMERCIAL LOTS FOR SALE
Conveniently located between Williston & Watford City, right off Hwy 85. Graded recently. Perfect for a new shop, or business! Lots have rural water, power, RTC, & electric right at the road. Hwy 85, S. on 140th Ave NW, 1/4 mile on right. 406-471-4049.

FOR RENT
FOR RENT
House in Savage. 1,400/month plus utilities. All appliances, air conditioning. No pets, no

smoking. Call 406-776-2209. Leave message.

FOR RENT IN SAVAGE
Finished 24x36 garage sitting on a 40x120 lot for rent. Perfect for a mobile home or a camper. \$900/month plus MDU. Call 406-776-2209 or 406-480-1626.

CAMPER SPOTS IN SAVAGE
Camper spots for rent in Savage. Water, sewer, electricity. \$575/month. No pets! Call 406-776-2209 leave message, or 406-480-1626.

RETAIL/OFFICE SPACE FOR RENT
Downtown Sidney, Montana in the Yellowstone Marketplace building. In-house restaurant, all utilities paid, free wi-fi, cellphone booster, \$750/month. Call Marci at 701-770-1904.

HOME FOR RENT
3 bedroom 2 bath, 16x76 home, with 12x20 shed, in Fairview email schmartsolutions@gmail.com or call 488-6183.

FOR SALE
ALPENLITE 5TH WHEEL
AlpenLite 5th wheel for sale. 32', 2 slides, new tires & batteries. Never lived in.

SALES PROFESSIONAL NEEDED

Qualifications:

Strong verbal communication skills, Ability to excel and contribute to a team environment, Possess great phone skills, Possess strong customer relation skills, Must be reliable, dependable, honest and ethical, Strong organizational and time management skills, Professional demeanor and appearance, General understanding of the retail environment. Please contact Dan at Iseman Homes. (701) 572-2590

Administrative Assistant Wanted

The Roundup is looking for a full-time Administrative Assistant to work Monday: 8am - 5pm, Tuesday - Friday: 9am - 5pm. Basic computer skills a plus. Will be answering multi-line phone, waiting on customers, some book keeping & entering classified ads. Benefits include: paid holidays, optional health care & one week paid vacation after one year. Apply at the Sidney Job Service.

BOOKKEEPER WANTED

Full time bookkeeper for The Roundup. Knowledge of Microsoft word, Quickbooks for Mac, Photoshop, etc. is a plus. One weeks paid vacation after one year. Email publisher@sidney.com or send resume to PO Box 1207, Sidney, MT 59270. Call us at 406-433-3306 for more info.



The Roundup
PO Box 1207
Sidney, MT 59270

111 West Main • Sidney, MT | 406-433-3306 • 1-800-749-3306

SAVAGE SCHOOL OPEN POSITIONS

Savage School is looking for an Assistant Custodian to start immediately for the 2015-2016 school year. Duties will include cleaning and assisting head custodian in the upkeep of Savage School. Position will work mostly after school hours. Position is open until filled.

If you are interested, please send a letter of interest, a resume and two to three letters of reference to Superintendent Lynne Peterson at PO Box 110, Savage MT 59262 or email to superintendent@savagepublicschool.com

Savage School is looking to fill a Secretary position to begin immediately. Duties will include meal monitoring, student information, attendance, grades, using Powerschool and Powerteacher computer programs and assisting the superintendent. Please send a letter of interest, a resume and 2 to 3 letters of reference to Savage School, PO Box 110, Savage MT, 59262 or to savageof@savagepublicschool.com. Position is open until filled.



EMPLOYMENT OPPORTUNITIES

Sidney Health Center's most valuable resource is the people who serve our patients, residents and guests. Join our team!

- Admissions Receptionist
- Certified Surgical Scrub Technician
- Clinic Receptionist
- Environmental Services
Housekeeper
- Food Services
Cook
Utility Worker
- Lodge
Cook
Dietary Aide

We promote a Work-Life Balance

STOP 9 Out of 10 Employees Agree:
"I don't have to choose between my job and family!"

For additional information or to apply online, please visit our website or contact: Marilyn Olson • Phone: (406) 488-2571
mjolson@sidneyhealth.org • 216 14th Ave SW • Sidney, MT

Visit Our Website at: www.sidneyhealth.org

THE BUSINESS ROUNDUP

REACH 26,500 READERS IN THE ENTIRE MONDAK REGION
406-433-3306 OR 800-749-3306 ~ info@roundupweb.com

GO TO WWW.ROUNDUPWEB/DIRECTORY FOR DIRECT LINKS TO COMPANY WEBSITES & LOCATIONS

\$25⁰⁰/WK

Beagle
PROPERTIES INC.
View all our listings at
www.beagleproperties.com

NICK JONES REAL ESTATE REALTOR
TRUCK ROUTE SOUTH, SIDNEY
OR CONTACT ONE OF OUR AGENTS:

JUSTIN JONES 406-480-9525	DENNIS WICK 406-480-1550	JENNIFER FRANKE 406-478-3773	KRISTIN LARSON 406-480-5139 Home: 798-3115
------------------------------	-----------------------------	---------------------------------	--

WWW.NICKJONESRE.COM

For all your Farm/Ranch, Recreational, Residential, and Commercial needs.

MISSOURI RIVER REALTY

Alan Seigfreid
Amanda Seigfreid

Jim & Janice Knudsen 120 2nd St. N.E. • Sidney Mt. 59270
Broker/Owners (O) 406-433-3010 • (C) 406-489-3010
email: alans@midrivers.com

Website: www.missouririverrealty.com

DOORBUSTN
Portables & Septic Service, LLC
Blaine Rogers, Owner

PO Box 1003 Sidney, MT 59270 Office: (406) 433-7586 Fax: (406) 433-7596 Service: (406) 489-9915

www.doorbustnportablessepticsevice.com

Steve Kober Master Plumber Plumbing Division Licensed in MT & ND

Toll Free: 1-877-488-8066
Office: 1-406-488-8066
Fax: 1-406-488-8067
stevek.agri@gmail.com

AGRI INDUSTRIES

1775 S CENTRAL AVE • SIDNEY, MT 59270 | WWW.AGRIINDUSTRIES.COM

HOSE ASSEMBLIES WHILE YOU WAIT

MFCP MOTION & FLOW CONTROL PRODUCTS, INC.

Fluid Connectors - Industrial Hose - Seals
Hydraulics - Pneumatics - Automation
Filtration - Racor - Instrumentation

Parker Store

406.433.1590 Sidney, MT 205 2nd Ave NE
After Hours 406.478.3119 Fax 406.433.1589 WWW.MFCPPINC.COM

Coverage for all the things you care for.

TIFFANY STEFFAN
323 E Main Street, Sidney, MT 59270
TSTEFFAN@FARMERSAGENT.COM

FARMERS INSURANCE

Call 406-433-1377 today for Auto, Home, Life and Business.

Customer Service is Our #1 Priority

BORDER

STEEL AND RECYCLING, INC.

Brady Smelser • Tim Mulholland • Kelly Moody • Bret Smelser • Ernie Gawryluk

Sidney 35002 CR 123 406-433-7737 1-855-810-2995	Glendive 2703 W. Towne St. 1-800-423-5219	Williston 13896 W. Front St. 1-800-820-5493	Plentywood Hwy 16 East 406-765-2624
--	---	---	---

SONDA'S

FR CLOTHING & EMBROIDERY

Office: 406-433-6757
Fax: 406-433-6755
Mon-Fri: 6am - 6pm
Closed: Sat & Sun
2221 S. Central Avenue
Sidney, MT 59270

SLS SERVICES, INC.
Oil Field & Industrial Construction

2265 S. Central Ave. Sidney, MT 59270
Email: ls@slservices.net
Phone: 406.433.6754 Fax: 406.433.6755

www.slserviceinc.com

TRADING POST

111 E. MAIN STREET • SIDNEY, MT. 59270
CONSIGNMENT • ANTIQUES
GUNS • TOOLS • PAWN
1-406-433-7676
ASK FOR JERRY OR JOANNA

MARTINI STEEL & SEAMLESS RAIN HANDLING
Serving The Region For 50 Years!

- Seamless Rain Gutters
- Siding & Roofing
- Soffit & Fascia
- Maintenance-Free Decks

Office: 406-798-3828 • Tom: 406-480-9078 • Dan: 406-291-0437

\$15,000 OBO. 406-480-5000, leave message.

BOAT FOR SALE
Lund boat for sale. 18ft, 1984 Tyee wih 115hp with 10 horse kicker. After 6pm, call 406-776-2408 if interested.

AUTO
'95 LINCOLN CONTINENTAL
1995 Lincoln Continental - needs alternator but runs great. Blue book at \$2,500 but asking \$2,000. 100,000 original miles. Call 406-480-2448.

2009 YAMAHA 1900 RAIDER
For sale- Yamaha 2009 1900 Raider motorcycle. 900 miles, like new. Custom pipes, windshield, luggage rack, back rest. \$8,000. Call 406-480-1977.

1997 CHEVY PICKUP
For sale - red & grey, 1997 Chevy pickup. 3/4 ton, 350 motor, runs good. 186,000 miles, 4-wheel drive, automatic. \$5,600 OBO. Call 406-776-2209, leave message please.

2010 CAMARO LT
Beautiful, 2010 Camaro LT for sale. Grey in color, 25,000 miles, very clean, always garaged. Asking \$26,000 OBO. Call 406-776-2209, leave message.

FARM & RANCH
CUSTOM HAY GRINDING
Fodder & Sons, Inc. custom hay grinding. Call Steven Vinnedge or Parker Hesper, 406-781-1197.

SIDNEY FEEDS
Sweet Pro Premium feed supplements for cattle & horses. Located at Hefty Seed Co., south of Sidney. Call 406-488-4338.

MINERALS & SUPPLEMENTS
Complete line of minerals & supplements, Crystalx protein & mineral tubs for cattle,

horses & sheep. All types of liquid feed for livestock. Calving supplies. R&J Ag Supply 406-488-1953, 406-480-2006, 1-800-233-2499, Sidney, MT.


VERMEER HAYING EQUIPMENT
See us today for all your haying & feeding equipment, sweeps & farm oil. Anderson Vermeer Sales & Service. Open Mon.-Fri, 8 a.m.-5:30 p.m. 701-828-3358 or 701-828-3482 (after hrs.). Alexander, ND.

SERVICES
R&L PAINTING
Will paint houses, barns, quonsets, silos, grain bins, etc. References available. R&L Painting, call 406-488-8244 or 406-480-4055.

WINDSHIELD REPLACEMENTS
Lowest price around. Quick service. Over 300 windshields in stock for cars pickups & semis. Magrum Motors, 1820 2nd St. W., Williston, 701-572-0114.

WELDING
Welding & repair work. No job is too small. Portable welder, reasonable rates. 701-444-2936.


YARD SALE
SAT., AUG. 1ST & SUN., AUG 2ND
822 2ND AVE SE SIDNEY
8:30 am. Lots of pretty framed pictures under glass. Figurines, clothes, and much more misc!



HEADQUARTERS FOR STOCKMEN
Williston Saddlery
14096 West Front Street – Williston, ND
4½ Miles West on Hwy 2

- Saddles – New & Used
- Tack & Riding Supplies
- Team Roping Items • Montana Silver Jewelry
- Purina Horse Feeds – Purina 4-H Show Feeds

“If ya wants it – we gots it.
If we ain’t gots it – we can gets it.
If we can’t gets it – ya don’t really wants it!”



*We are like a good Horse –
We aim to please*

TELEPHONE
701-572-2267

Gifts, Total Equine, Pet
Foods, Ropes & Tack!





J & S FEEDS
More than just a Feed Store...

jsfeeds@midrivers.com

P: 1-406-377-2180
F: 1-406-377-2181

1000 N MERRILL GLENDIVE, MT 59330

LET'S MAKE A

WE BUY VEHICLES OUTRIGHT TOO!

ASK FOR RICK



 <p>2004 ALLEGRA SERIES M-40TSP RV BUS NEW 400HP CUMMINS DIESEL A/C, 15,000 BTU DUCTED CENTRAL A/C, MICROWAVE, SIDE BY SIDE REFRIGERATOR, AIA ASST. SUSP, 2 LCD TV'S, SAT SYSTEM, DIESEL GENERATOR, CO, NAV, 3 SLIDERS, 60,618 MILES.</p> <p>\$104,995</p>	 <p>2006 CHEVROLET 1500 CREW LT2 BUCKETS, 271, 5.3 V8 ATOD, A/C, PW, PL, PSEAT, TILT, SC, 4X4, AM/FM/CD, NERFS, TCOVER, WHITE/PEWTER CLOTH, 96,842 MILES. U7160B</p> <p>\$17,995</p>	 <p>2012 GMC 2500 SLT CREW H4 6.0 GAS ATOD PW, PL, TILT, SC, A/C, AM/FM/XM/CD HTD SEATS, P SEATS, GRILL GUARD, NERFS BLACK EBONY G69831 40,898 MILES</p> <p>\$39,995</p>	 <p>2014 NISSAN ALTIMA S 2.5L 4CYL, ATO, CVT, PW, PL, TILT, SC, A/C, AM/FM/CD, RED METALLIC/EBONY CLOTH. U7042A. 37,925 MILES</p> <p>\$17,495</p>	 <p>SOLD 2011 DODGE RAM 3500 DUALY FLATBED BIGHORN, 6.7 CUMMINS DSL, ATOD, A/C, PW, PL, TILT, SC, AM/FM/CD, 4X4, RED METALLIC/GREY CLOTH. 171,698 MILES. G7163A</p> <p>\$23,995</p>
 <p>2014 HYUNDAI TUCSON AWD, SE, A/C, 2.4L, 4CYL, AUTO, PW, PL, TILT, SC, AM/FM/CD, SILVER/EBONY INTERIOR. 24,461 MILES. U6998A</p> <p>\$22,995</p>	 <p>2011 FORD EXPEDITION XLT 5.4 V8, ATOD, PW, PL, TILT, SC, SC, A/C, PSUNROOF, HTD/ COOLED SEATS, AL WHEELS, WHITE/GOLD, TAN LEATHER, 38,104 MILES. U7196A</p> <p>\$27,995</p>	 <p>2007 CHEVROLET 3500 G62, RW LONGBOX, CLASSIC DURAMAX, ATOD, ALLISON LIT3, PW, PL, PSEATS, TILT, SC, AM/FM/CD, GOSSENK HITCH, LAST OF THE DURAMAX TWO ALL CHASSIS ADDED. ONLY 71,632 MILES! U7170A</p> <p>\$29,995</p>	 <p>2013 CORVETTE CONVERTIBLE 60TH ANNIVERSARY 42, 6SPEED MANUAL, 258 PKG, CHROME WHEELS, PW, PL, A/C, TILT, SC, AM/FM/XM/NAV, POWER ROOF, CRYSTAL RED TINT COAT/EBONY LEATHER. 6,285 MILES. C7192A</p> <p>\$65,995</p>	 <p>2014 GMC 1500 CREW SLT 5.3L V8, ATOD, PW, PL, TILT, SC, A/C, PSEATS, HEATED SEATS, PSUNROOF, WIND, AL WHEELS, ASSIST STEPS, SILVER/EBONY LEATHER. 13,548 MILES. G7140A</p> <p>\$40,995</p>
 <p>2013 GMC 1500 SIERRA DENALI 6.2V8, ATOD, A/C, PW, PL, P SEATS HTD/COOLED SEATS AM/FM/XM, CD P SUNROOF, DVD, T COVER, ASST STEPS SILVER/EBONY LTHR G6979A 39,656 MILES</p> <p>\$41,995</p>	 <p>2015 MAZDA CX5 TOURING AWD, 2.5L 4CYL, ATO, A/C, PW, PL, TILT, SC, AM/FM/CD, GREY METALLIC/EBONY CLOTH. 27,281 MILES. U7186A</p> <p>\$23,595</p>	 <p>2011 BUICK ENCLAVE AWD CXL-1, 3.6 V6, ATOD, PW, PL, TILT, SC, A/C, AUTOSTART, AL WHEELS, PSUNROOF, AM/FM/XM/CD, BOSE CARBON BLACK METALLIC/EBONY LEATHER. 93,360 MILES. B6903A</p> <p>\$22,495</p>	 <p>2011 CHEVROLET 2500 LTZ CREW 6.6 DIESEL ALLISON AOD, 4X4, A/C, PW, PL, PSEATS, TILT, SC, PSUNROOF, AM/FM/XM/CD, GM ASSIST STEPS, 2" RAIL GUARD, SPRAY LINER, GOSSENK HITCH, TAUPE GREY METALLIC/EBONY LEATHER. 90,425 MILES. U7101C</p> <p>\$36,995</p>	 <p>2014 CHEVROLET IMPALA LTD LT 3.6 V6, ATOD, PW, PL, TILT, SC, PSEAT, A/C, AM/FM/XM/CD, MED RED METALLIC/EBONY CLOTH. 28,009 MILES. U7115A</p> <p>\$17,295</p>
 <p>SOLD 1998 GMC 1/2 TON EXT CAB 3000R, 4X4, 5.0 V8, ATOD, PW, PL, TILT, SC, CD, NEW TIRES, TOPPER, WHITE/GREY CLOTH, AL WHEELS, ONLY 47,763 MILES! G6274A</p> <p>\$7,995</p>	 <p>2015 CHRYSLER 200 C 2.4L 4CYL, ATOD, PW, PL, TILT, SC, A/C, LEATHER BLACK/ EBONY. 20,968 MILES. U7181A</p> <p>\$21,995</p>	 <p>2014 FORD F550 CREW XL UTILITY BED, 6.7L DIESEL ATOD, PW, PL, A/C, CRUISE, 4X4, AM/FM/CD, WHITE/GREY INTERIOR, 15,995 MILES. G7117A</p> <p>\$45,995</p>	 <p>2012 GMC 1500 SIERRA CREW SLT, ALL TERRAIN PKG, 5.3 V8, ATOD, A/C, PW, PL, PSEATS, TILT, SC, AM/FM/XM/CD, FIRE RED/EBONY LEATHER. C8097A. 38,283 MILES.</p> <p>\$33,995</p>	 <p>2013 CHEVROLET 2500 LTZ CREW 6.6 DURAMAX ALLISON, ATOD, A/C, PW, PL, TILT, SC, PSEATS, HTD SEATS, CUSTOM CHROME WHEELS, LIFTED, SPRAY LINER, SILVER/EBONY LEATHER. 38,455 MILES. C7100A</p> <p>\$49,995</p>
 <p>2013 DODGE DART SXT SXT, 2.0 4CYL, ATO, PW, PL, TILT, SC, A/C, AM/FM/CD, WHITE/EBONY INTERIOR. 18,317 MILES. U7006A</p> <p>\$15,575</p>	 <p>SOLD 2006 DODGE DAKOTA SLT 4WD, 4.7 V8, ATOD, A/C, TILT, PW, PL, AM/FM/CD, SILVER/ EBONY CLOTH. 86,327 MILES. G67191</p> <p>\$12,995</p>	 <p>2014 CHEVROLET IMPALA LIMITED 3.6 V6 ATOD, PW, PL, TILT, SC, A/C, PSEAT, PSUNROOF, AL WHEELS, AM/FM/XM/CD, WHITE/EBONY, 18,959 MILES. U7117A</p> <p>\$17,995</p>	 <p>2009 CADILLAC DTS PERFORMANCE PLATINUM 4.6 V8, ATOD, PW, PL, PSEATS, PSUNROOF, AM/FM/XM/NAV, CHROME WHEELS, NEW TIRES, ONYX BLACK/EBONY LEATHER. 37,179 MILES. C6879B</p> <p>\$22,995</p>	 <p>2015 BUICK ENCLAVE AWD LEATHER, 3.6 V6, ATOD, A/C, PW, PL, TILT, SC, P SEATS, 7 PASS, AL WHEELS, DEEP BLUE MET/EBONY LEATHER 12,271 MILES. U7038A</p> <p>\$39,995</p>



MURPHY MOTORS

CHEVROLET GMC BUSINESS ELITE

Mark Waggoner is "The Credit Doctor"

TAX TIME IS CAR TIME
YOUR JOB IS YOUR CREDIT
www.NDcreditDR.com

MURPHY MOTORS INC.
26 YEARS
1987-2013



SEE THESE SALES CONSULTANTS FOR QUALITY CAR BUYS!



Pat Murphy
Dealer



Mark Waggoner
Credit Doctor



Ben Bivens
New Car Manager



Kelly Blomberg
Fleet Manager



Anthony Thompson
Business Manager



Miguel Gonzalez
Sales



Rick Moe
Sales Manager



Dusty Falcon
Fleet Sales



Greg Bowles
Sales



Colt Treffry
Sales



A.J. Kalir
Sales



Jimmy Ramirez
Sales

Se Habla Español

1801 2nd Ave W Williston, ND Call 1-800-888-2927 or 701-577-2927 • HOURS: Service & Parts: Mon 8am-6pm; Tues-Fri 8am-6pm; Sat 9am-5pm • SALES: Mon-Fri 8am-6pm; Sat 9am-5pm

www.murphymotors.com

XNLY220206

Bakken Mobile Veterinary Service

Dr. Vince Stenson
Complete small animal care
8 am - 4 pm

Sidney:
Tues, Aug 4, 25
Tractor Supply Co.

Culbertson:
Wed, July 29, Aug 5, 12, 19
County Ext. Bldg on Main Street

Stops Available In **Fairview & Bainville** By Request

Call for Appointment
(701) - 609 - 3705

Mini-Storage

STORAGE UNITS AVAILABLE
20X20 • 10X20
10X16 • 8X9
Sidney, MT
482-3799 or 482-2666

Check us out weekly with...

Roundup

Monthly with...

Golden Roundup

Or take advantage of all our publications every day at...

Roundup
WEB.COM

Is your Farm & Ranch business Roundup Ready

See Us Today
We make good business better!

The Roundup
call us at:
406-433-3306
email us at:
email@esidney.com

The second year's focus is hands-on. The participants

For more information about Sidney Leadership, please contact Marissa Eberling at the Sidney Area Chamber of Commerce office, 433-1916 or stop by their office at 909 S. Central Avenue in Sidney. Applications are due no later than August 17th.



Anderson has worked in Information Technology for over 30 years with the last 15 years in health care.

WELCOME TO THE 5TH ANNUAL

Best of the West

ANTIQUE CAR

AND

TRUCK SHOW

Friday, August 7 • Noon - 7pm
Main Street • Watford City, ND
(In conjunction with Best of the West Ribfest)

GREAT FOOD • VENDORS • CHILDREN'S PLAY AREA • LIVE ENTERTAINMENT

Classes Include:

- Best in Truck
- Best Engine
- Best Ford
- Best Modern Muscle
- Best Paint
- People & Kid's Choice
- Best Mopar
- Best GM
- Best Pre-War



Judging begins at 4pm (CDT). Award Presentation at 5pm (CDT)
Dash Plaques to the first 25 entries! Pre-registered entrants guaranteed dash plaque!

REGISTRATION

Vehicle Registration Fee \$10 payable to the Best of the West Ribfest
Pre-Register by August 1st
Watford City Chamber of Commerce. PO Box 458, Watford City, ND 58854

NAME: _____ PHONE: _____
ADDRESS: _____ EMAIL: _____
CAR/TRUCK MAKE, YEAR & MODEL: _____

In consideration of the right to participate in this event, I agree that the sponsors of the organizations affiliated with the Best of the West Antique Car & Truck Show and Best of the West Ribfest are not responsible for accidents, injuries, losses or claims that may arise. **SIGNED:** _____

QUESTIONS:

Robin Greenhagen: 701-354-8241 or robin@bluelube.net
Or Watford City Chamber of Commerce: 701-570-5084 or wcchamber@ruggedwest.com
www.watfordcityribfest.net

Fred Osvoild Farm Auction

**Lunch will
be served.**

FOR SALE INFO:
Fred Osvoild
(701) 641-8540

Sale Location:

From Noonan, ND:
Go 4 miles South and 1 mile
East. Follow signs.

Tues., Aug. 4, 2015

**Guns sell at 1:00 p.m.
Large equipment at 1:30 p.m.**

11 a.m.

**Rural
Noonan,
ND**

Tractors

Case IH 9380, 4400 hours
875 Versatile w/ 14' Leon dozer
875 Versatile
835 Versatile, complete overhaul,
few hous on engine.
560 Farmall gas
5020 John Deere

Trucks, Semis, Trailers

1994 Peterbuilt, 3406, 10 speed
1980 GMC General, 855, 9 speed
1974 IH 1700 loadstar, tag
1991 Chevy 1 ton, 6.2 diesel, 2WD,
service box
1986 Chevy 3/4 ton, 350, 2WD, Auto
42' Timte Superhopper trailer
28' Freuhauf panel trailer w/ 2 -
1600 gallon tanks and mixing
cone
Several older pickups and trucks

Field Equipment

40' Ezee-On Air Seeder, 7550 series
II w/ 3000 series tank
90' Summers sprayer
Leon Reel Rock Picker
Woods BW 1260 mower

Harvest and Grain Equipment

R72 Gleaner combine w/ 36'
honeybee header
1480 IH combine w/ 30' header
and pickup header
72' Sakundiak PTO auger
6" x 33' Sakundiak auger
w/ motor

7" x 41' Westfield auger w/ motor
Several older parts combines

Tools

220 Volt wire welder
Press
HD band saw
Lots of shop tools and hand tools

Guns

Remington Mohawk Nylon - 21
Auto
Mossberg bolt action - 308
Remington 760 Game Master -
30-06
Mossberg Ducks Unlimited - 12
gauge
SKS yugo - 7.62x39
Ithaca 37R - 12 gauge
Marlin Glen Field - 22 bolt
Swiss straight pull - 7.55x55
Turkish Mauser - 8MM
High standard double nine - 22
pistol
Ruger double action nine - 22
pistol
Mossberg bolt action -
20 gauge
Mosin Nagant bolt action -
7.62x54

HAUGLAND'S ACTION AUCTION

12520 104th St. NW -- Ambrose, ND 58833
Phone 701-965-6234 -- FAX: 701-965-5234

No sale is too big, too
small, too near, or too far!

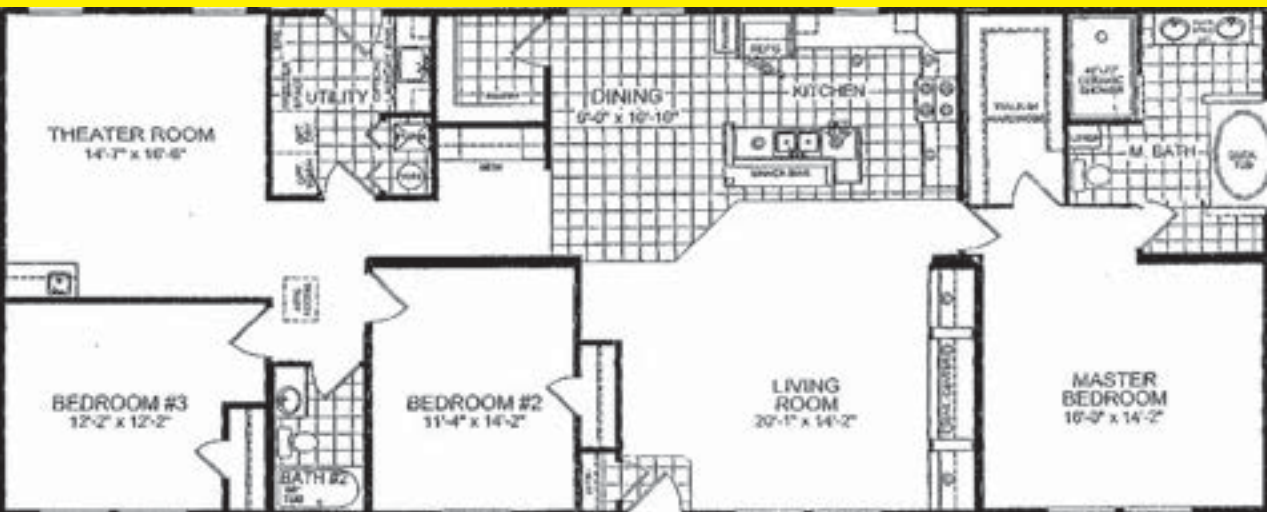
■ Butch Haugland, #211
Auctioneer
■ Drew Haugland, #730
Auctioneer
■ Amber Haugland, #693
Auctioneer
■ Diane Haugland, #236
Clerk

Not responsible for accidents. Those attending sale do so at their own risk.

www.hauglandauctions.com

COME SEE THE APOLLO!

2184 Sq Ft of luxury! A theater room and serenity master bath are included along with many other OUTSTANDING features!




Many Other Homes Are On Display At Our Williston Location!

Iseman Homes

YOU'RE HOME, NOW.

Mon: 9am - 7pm • Tues-Thurs: 9am-6pm
Fri: 9am - 5:30pm • Sat: 9am - 4pm
2308 West Front St. Williston, ND | 701-572-2590



Reducing Texting & Driving

By: Richland County Injury Prevention Team

Following Texting & Driving presentations in local high schools and for the public Janae Moore's Family loaned Janae's pickup to the Injury Prevention Team to bring continued awareness to the dangers of Texting & Driving.

The pickup has been present at each high school in Richland County and several other locations. With support of many local businesses and private land owners the pickup has been seen by many. It was placed at the Extension Office during the Public Presentation, similar to the ones done for our local high schools. From a location on Highway 16 just past Sioux Pass the pickup was placed on Highway 200 for Memorial weekend, those traveling to Fort Peck were reminded to drive undistracted. The community has been reminded not to 'text & drive' by signage placed on the pickup. It was then placed in Savage during the Catfish Tournament and all-school reunion, Lambert's Fourth of July Celebration and Fairview's Old Timers Festival and all-school reunion. It will be parked at Lower Yellowstone and then following the Richland County Fair the pickup will be out past the MDU Bridge.

The pickup that Janae was driving is a stark reminder to drive undistracted. She was on her way to Fort Peck when the distraction of texting took her eyes off the road and diminished the ability to react when the pickup wandered off the road. The pickup rolled several times before coming to rest in a field several yards from the black top.

The Richland County Injury Prevention Team, the Moore Family, Montana Highway Patrol, and Richland County EMS ask that you drive undistracted 100% of the time. Set expectations for yourself and others, don't text and drive and don't allow others to text and drive. One time could be devastating to you and the ones you love.

For more information or how to make a difference in your community please contact Mary Sundheim, Injury Prevention Specialist at the Richland County Health Department. 406-433-2207.

RoundupWEB.COM

Roosevelt County Fair

GROW IT. SEW IT. SHOW IT.

THURSDAY • JULY 30

8.30AM- Horse Judging
5.00PM- Free Corn Feed
FFA Alumni BBQ
Afternoon entertainment provided by the Midway Band

FRIDAY • JULY 31 COOPERATIVE DAY

9.00AM- Livestock Judging
1.00PM- Small Animal Judging
5.00PM- Free meal
6.00PM- 4-H/FFA Livestock Auction
8.00PM- Entertainment with Tigirlily

Children's Entertainment Daily 10am-7pm

SATURDAY • AUGUST 1

9.30AM- Livestock Showmanship
1.00PM- Rib Cook-off
1.30PM- Money in the Straw
5.30PM- Ranch Rodeo Calcutta-
Colbertson Saddle Club Hwy 16N
6.00PM- Ranch Rodeo

★★★★★

2015 DODGE DART SXT

#22793

\$18,977 ~~\$287⁸³~~ **AOC**

★★★★★

2015 DODGE DART LIMITED

#22940


\$24,028 ~~\$364⁴⁴~~ **AOC**

SUMMER CLEARANCE EVENT

CHRYSLER DODGE Jeep RAM

Ryan MOTORS

SELLING ALL 2015 DARTS AT LOW PRICES!



Tax, title, license & doc fee extra. 72 months 2.9%, \$0 down.

701-577-1111 | 1212 W 2nd St. Williston, ND

2015 RICHLAND COUNTY FAIR BOOTH

*Special
Section*

**“Building
Memories One
Fair At A Time”**

August 5 - 8

**The
Roundup**

We Are Overstocked!

Great Selection of New '15s, '16s & Pre-owned!

Take up to \$8,500 off NEW GMC & Chevy Trucks*
Come in during the fair & cool off with a HOT DEAL!

We Are Professional Grade.

FIND NEW ROADS

**0% Interest on
Select Models!***

**Many Cars,
Trucks & SUVs to
Choose From!**

**2016's Already
In Stock!**



Gem City
MOTORS



703 S. Central, Sidney | 406-433-3120

*See Dealer for Details

www.gemcitymotors.com

Enjoy The Richland County Fair & Rodeo!



HURLEY'S OILFIELD SERVICES

- Porta Potties • Potable Water • Sewer Systems • Loaders • Communications
- Backhoe • Trucking • Skid Houses

Dispatch: 701-844-1234 | Fairview, MT

Crestwood Inn

Come Join the Good Life



Crestwood Inn is a HUD subsidized housing complex for those 62 & older or disabled. We provide a welcoming environment that helps you feel at home in your spacious one-bedroom apartment. Being close to downtown, you are never far from your loved ones, shopping, or town events. Don't drive? Not a problem! Richland County Transportation comes right to the front door.



Please feel free to contact our Onsite Manager with any questions or concerns:
406-433-3721 or crestwd@midrivers.com

Our Service Coordinator is available to Crestwood Inn residents (& the public) to help with connecting them to programs that help keep them independent.

Call 406-433-4681 for assistance.



Office: Mon-Thurs: 7am - 5pm
410 3rd Ave. SW • Sidney, MT 59270

Welcome To The Richland County Fair & Rodeo!

The Showcase Window of Agriculture Achievement in Eastern Montana and Western North Dakota

Please plan to join us at the 2015 Richland County Fair & Rodeo, August 5-8! We hope you plan to attend & enjoy the fun-filled days & nights!

Entertainment throughout the day includes the many commercial, agriculture, school, and 4-H exhibits, food booths & carnival by North Star Amusements. You won't want to miss all the daily free act entertainment. Remember to purchase your tickets for the PRCA Rodeos held Thursday, August 6 and Friday, August 7 at 7:30 p.m. presented by Brookman Rodeo, LLC. Thursday night's rodeo performance is "Military Appreciation Night" and Friday night's rodeo performance is "Tough Enough to Wear Pink Night." \$3 will be donated by our sponsors for every person wearing pink, and all proceeds will benefit the Richland County Health Department Cancer Coalition. This year's concert includes Grammy winner Martina McBride with special guest Love and Theft on Saturday, August 8 at 7:30 p.m.

We would also like to thank all of the Mon-Dak area residents, businesses, and the sponsors for your continued support.

There is so much to see & do, make sure to join us August 5-8 at the 2015 Richland County Fair & Rodeo!

"Building Memories One Fair At A Time"

Sincerely,
Jamie Larson
Manager, RC F&R

Fair Savings From



FR CLOTHING & EMBROIDERY



15% off

All Fire Resistant Clothing In Stock!
August 3rd - 7th

M-F: 6am - 6pm • Sat: 8am - 5pm
2221 S. Central, Sidney • 406-433-6757

Enjoy The Richland County Fair & Rodeo

One Store...Two Locations

Home Design Center 111 S. Central Ave. 433-1402 <ul style="list-style-type: none">• Furniture• Appliances• Housewares• Toys	Hardware Center 114 W. Nain 488-1909 <ul style="list-style-type: none">• Hardware• Sporting Goods• Firearms • Lawn & Garden
--	---

100TH ANNIVERSARY. 100

JOHNSON

HARDWARE & FURNITURE
— since 1915 —

Mon-Fri: 8am - 5:30pm • Sat: 8am - 4pm
WWW.JOHNSONHARDWAREANDFURNITURE.COM

Martina McBride With Special Guest Love & Theft In Concert Saturday, August 8th

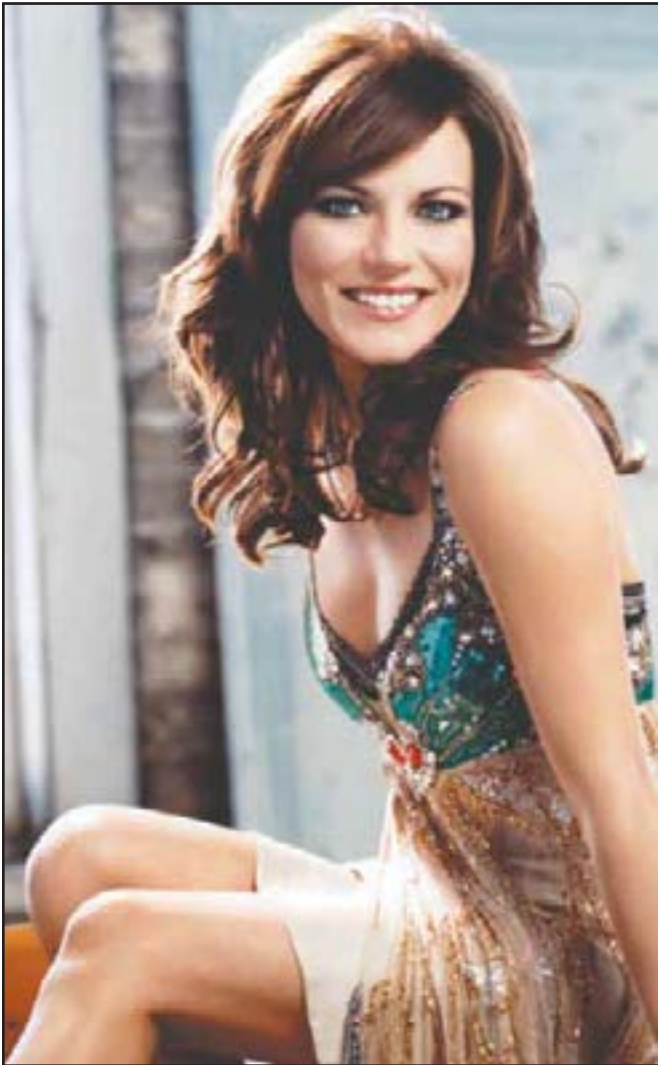
By Meagan Dotson
Martina McBride with special guest Love and Theft will be in concert Saturday, August 8th at 7:30 pm. The highly anticipated event will be held during the Richland County Fair and Rodeo August 5-8 in Sidney, MT.

The chart topping singer songwriter has won Female Vocalist of the year by the Country Music Association four times and has won Top Female Vocalist by the Academy of Country Music three times. McBride is a fourteen time Grammy Award nominee and is well known for songs such as Wild Angels, Independence Day, My Baby Loves Me, and This One's for the Girls.

The Fair Board had determined prior to the 2014 Richland County Fair and Rodeo that McBride would be headlining this year; the singer is scheduled to perform in Billings, MT and Helena, MT as well as in Saskatchewan, Canada around the same time.

Love and Theft will be opening Saturday night. The duo Stephen Barker-Liles and Eric Gunderson have been Academy of Country Music, Country Music Association, and Country Music Television nominees and are known for such hits as Angel Eyes and Runaway. Love and Theft have released three albums: World Wide Open, Love and Theft, and Whiskey on my Breath. The band has also released their version of Wrong Baby Wrong which was originally recorded in 2009 by McBride.

Tickets for the concert are on sale at the Fair Office located at 2118 West Holly Street in Sidney. Packages are \$68 and include one concert ticket, a ticket to each night of the rodeo, and one admission button. General admission pre-sale tickets are \$45 dollars prior to July 31st and \$50 if purchased the week of the fair so hurry in to get your tickets today.



Martina McBride



Love & Theft

Enjoy the Richland County Fair & Rodeo!

- Fresh Meat, Produce & Bakery
- Ice Cold Beverages
- Western Union • Lottery
- Full Service Deli/Coffee Shop
- Floral Shop • Movies
- Special Orders Always Welcome (Call 482-3737)

REESE & RAY'S IGA

Open 8am - 10pm Daily | 203 2nd St. NW • Sidney, MT • 406-482-3737 | www.reeseandraysiga.com

Dine In Air Conditioned Comfort... Then Enjoy The Fair!

Try Our Yummy Belgian Waffles!
--- Breakfast & Lunch ---
Specials Daily
--- Homemade BBQ ---

Sunny's
Family Restaurant
"It's Always Sunny at Sunny's!"

102 E. Main • Sidney, MT • 406-433-1839
Mon Sat: 5am - 3pm • Fri & Sat: Midnight - 5am • Sun: 5am - 2pm Breakfast Only

elna Sewing Machines
SWISS DESIGN

Come See Us At Our Booth & Try One Out!
We Will Have "Fair" Prices!

Four Winds Quilting • Billings
Sunshine Studio • Sidney

For info, call Deb Bradley at 406-489-5111

Come And See Us At THE FAIR!

Pink Fashions For The Rodeo
Summer Apparel For Men & Women
Accessories & Footwear

CHECK OUT OUR DOWNTOWN STORE
Fantastic Bargains On The Sidewalk
★ ★ ★ ★ ★ ★ ★ ★ ★ ★ ★ ★ ★ ★ ★ ★
August 7th & 8th, A Portion of ALL Sales Will Go To Lois Kalberer To Help With Medical Expenses

JZ Fashion & Coffee Boutique
113 E. Main ST – Sidney, MT – 406-433-5050

Take Time to CHECK YOUR HEALTH!

There are generally no symptoms of high blood pressure, so you usually don't feel it. In fact, nearly one-third of people who have hypertension don't know it. The only way to find out if you have high blood pressure is to get your blood pressure checked on a regular basis.

FREE Blood Pressure and Blood Sugar Checks in the Ag Building

All 4 Days of the Richland County Fair
Fair Booth Hours: Noon - 8:00 PM

SIDNEY HEALTH CENTER
Exceptional Care for Life


216 14th Ave SW • Sidney, MT
Phone: (406) 488-2100
www.sidneyhealth.org


Find us on Facebook

Come & See The Ford Display At The Fair!

Cars • Trucks • SUVs

**Featuring
The Ford
Street Team!**





“Experience the Eagle Country Difference!”
215 East Main • Sidney, MT | 433-1810 or 1-800-482-1810 | eaglecountryfordsales.com



**TURN
YOUR
TRASH
INTO
“CASH”**

Sidney
406-433-1301
MT & ND
Toll Free
1-800-548-6364

Tell us you want a
“FAIR” Price
for your cans and get
35¢ PER POUND
*any quantity**
AUGUST 3RD - 7TH



PACIFIC
STEEL & RECYCLING..

Monday - Friday 8 a.m. - 5 p.m.
*Excludes all other offers

Open Class Exhibits Invite Everyone To Get Involved



Each year Penny Verhasselt tries something new and different with her quilting, as you can see from two previously entered quilts she has sewn.





**WOOD GROUP
PSN** “This is a Great Place to Work!”

Safety & Assurance Relationships Social Responsibility People Innovation Financial Responsibility Integrity



Take A Ride
At The Richland County
Fair & Rodeo!



**Proud Sponsor of
TOUGH ENOUGH
TO WEAR
PINK?**
Sponsored by WRANGLER®

Wood Group PSN is a global provider of pre-operations, hook up & commissioning, operations & maintenance, engineering, construction, project management, training and decommissioning services to the energy industry. Employing over 29,000 people in more than 40 countries, Wood Group PSN offers high integrity, brownfield services that support customers to optimise performance, maintain production, reduce operating costs and provide integrity assurance.

To learn more, please visit
www.woodgroup.com



**WOOD GROUP
PSN**



**BIG TRACTOR PERFORMANCE.
MID-SIZE VERSATILITY.**

Case IH Maxxum Series tractors combine efficient power with operator convenience to make loader and hay work more productive with 90 to 120 PTO horsepower. Case IH Puma Series tractors offer big tractor performance with mid-size versatility. Ranging from 105 to 195 PTO hp with CVT transmissions, they have the horsepower to handle both livestock and row crop tasks in mixed farm operations. Plus the new Case IH SCR engine technology brings a new level of fuel efficiency to your operation.

SEE US TODAY!



TRI-COUNTY IMPLEMENT, INC.
2429 W HOLLY STREET
SIDNEY, MT 592709213
406-488-4400



Stop By Our New & Improved Electric Land!



Check Out The New Exciting Line-Up
of Electronics & Accessories!

ELECTRICLAND

Enjoy The Richland County Fair & Rodeo!

NEW BRANDS

NEW PRODUCTS

NEW SERVICES

410 N. Central, Shops at Fox Run • Sidney, MT | 406-433-4370 | Mon-Fri: 9am - 6pm | Sat: 9am - 5pm

By Meagan Dotson

With the Richland County Fair fast approaching, there are many things to look forward to: the rodeo, carnival, concert and other entertainment, and, of course, the fair entries that peak people's interests, filling booths and lining walls and shelves. While many exhibits are entered by schools and 4-H members, Open Class entries are for anyone who takes independent interest.

There are a number of categories for all ages and while some work on projects specifically for the fair, there are plenty of people who take something they have already made for fun or function.

Teresa Nollmeyer has been entering in the fair almost every year since 1972. As a child, she became involved through 4-H and as an adult she still enjoys exhibiting.

"The exhibits are something that make the fair interesting," she commented.

Nollmeyer has entered in a variety of categories over the years, however canned goods seem to be her nitch as it is something that she does throughout the year and sets aside the canned goods she wants to enter as she goes. She discusses the satisfaction that comes with the finished product and the feeling of efficiency.

"I would encourage people to get involved in entering in the fair. Find what's going on in your life right now...canning is a good fit for me because it's something I'm doing anyway. I've met a lot of people I wouldn't have otherwise met because I've been involved," she commented. "It is nice to know what others think about what you're doing."

Penny Verhasselt also got involved as a child through 4-H, and as an adult, has been entering in Open Class for about 10 years.

"I got involved because I was influenced by my friends. I remember saying 'I am never going to cut big pieces of material into small pieces and then sew them back together to make a big piece of material again!' But I was wrong," she laughed. "My friend Donnette Dopp got me and a group of friends into quilting and then encouraged us to enter in the fair. It's all her fault."

Over the years, Verhasselt has entered in canning, baking, and photography, but quilting is her go-to. Eventually she 'corrupted' her mom, Mildred Delaney, and her sisters, getting them to participate as well. Her husband Terry Verhasselt has also entered in the woodworking category in the past. Penny Verhasselt discusses how having projects judged not only showcases current talents, but also shows progression in skill from year to year.

When asked why she would encourage others to get involved, she replied, "You are supporting the community with

your display. If we don't contribute, there won't be enough interest to continue and it will become a lost art. I don't want to see that happen."

Both Verhasselt and Delaney agree that if participation wanes, a valuable aspect of the fair will be lost.

"Even if people don't think it is 'good enough', if you made it, enter it. Try it; every time you do you will get a little bit better. Enter what you can and display the rest because you are showcasing your craft and giving ideas to the people that stop to look."

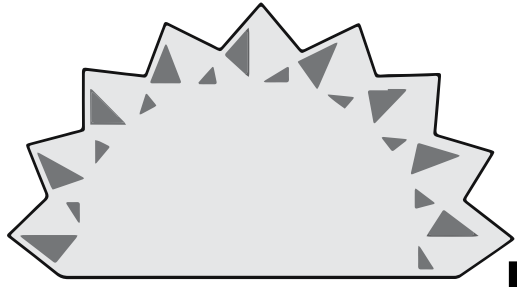
While we are fortunate here in Richland County to have a lot of interest and participation in our fair, it is always a good time to encourage others to become involved. While ribbons and winnings are incentive, someone might just find the satisfaction of being involved enough to keep them entering year after year.

Pre entry is required and entry sheets will be accepted any time before Sunday, August 2nd at the Richland County Fairgrounds. For more information, contact the Richland County Fair and Rodeo at 406-433-2801.



The first quilt that Penny Verhasselt ever entered in the fair she made for her husband Terry.

ENJOY THE FAIR & RODEO!



FRONTIER

Heating • Refrigeration • Air Conditioning
SIDNEY, MT | 488-4657

Enjoy The Richland County Fair & Rodeo!

We Have Fair Buttons! ★ ★ ★ ★ ★ ★ ★ ★

Come & See Us For
All Your Agricultural,
Commercial or
Personal Banking
Needs!



Merchants Bank

Big enough to serve you | Small enough to know you

216 S. Ellery Ave. • Fairview, MT | 406-742-5203 | Mon-Fri: 9am - 4pm

Welcome To The Richland County Fair!

After Enjoying The Fair, Stop By & Have Some Fun!

Happy Hour
Mon-Fri: 5-6pm

.....
\$2 Domestic Beers
\$2 Well Drinks

You're never a stranger at the

RANGER

Lounge, Casino & Eatery

Open: Mon-Sun 10 am - 2 am
110 South Central Avenue • Sidney • 482-4566

It's Wrangler Days During The Fair



e Western Original®

Boys' & Men's Jeans | Western Shirts

\$5.00 off | **25% off**

Sale Runs August 5th - 8th

FARM & HOME

SUPPLY

Mon - Fri: 8am - 5:30pm • Saturday: 8am - 5pm
809 East Main • Sidney, MT | 406-433-3400



Mid-Rivers Telephone Cooperative, Inc. building in Sidney, MT.
Join the area Cooperatives for free rootbeer floats on Thursday, Aug. 6 at the Richland County Fair.

Mid-Rivers Telephone Cooperative to Help Serve Free Rootbeer Floats as Part of Co-op Day Thurs., Aug. 6 at the Richland County Fair

Submitted by Nicole Senner, Member Services Coordinator

Mid-Rivers Telephone Cooperative was formed in 1952, and currently is celebrating its 63rd year serving its members. Operating in Eastern and Central Montana, Mid-Rivers is the largest landmass telephone cooperative in the continental United States. It services an area encompassing 30,000 square miles over a 21-county area of Montana and three counties in North Dakota.

As your cooperative, Mid-Rivers provides a variety of services beyond the basic telecommunications services. Higher Education Scholarships are available annually to high school seniors and continuing college students to aid in their efforts of obtaining an education beyond High School. Mid-Rivers offers rural economic development assistance, including free grant writing, to communities in the Mid-Rivers Service area to assist local governments, schools and non-prof-

its. Mid-Rivers has proven that the Cooperative business model is highly effective for providing high-cost services in rural areas.

In this cooperative, the needs of customers remain the top priority, and Mid-Rivers maintains the goal of providing the best telecommunications services available to members at affordable prices. Mid-Rivers has implemented several exciting improvements lately while continuing to offer excellent customer service and telecommunications services.

One of the most recent changes Mid-Rivers has implemented is to update and significantly reduce prices on cellular plans. Mid-Rivers recently dropped the price on cellular voice and data plans while increasing the amount of monthly data customers receive. These plan changes, along with the implementation in recent years of NATION-WIDE voice, messaging and 4G LTE data services and the latest cellular devices, make Mid-Rivers Cellular a viable

choice for meeting all your mobile communications needs.

In addition to lowering the price on cellular plans, Mid-Rivers has done away with the requirement for two-year cellular contracts. Customers are now able to purchase any cellular phone, including the latest smartphones such as the Samsung Galaxy S@6 edge and Galaxy S@6, with \$0 down on approved credit.

Mid-Rivers has also made improvements to high-speed Internet services, now offering Internet download speeds up to 50 Mbps to residential customers in the Sidney and Fairview communities. Internet applications have changed drastically over the last few years, so if you have not recently upgraded your Internet plan, now is a good time to contact Mid-Rivers and learn what speeds may be available to you.

We are Mid-Rivers Telephone Cooperative, Inc., YOUR Community Partner!

Co-op Day at the Fair

Don't Miss Richland County's Fair & Free Floats Thursday By Richland County's Cooperatives!

Fixed Rate Secured Loans
Starting At 1.75% APR
On Approved Credit. No origination fees.



Serving our members for 76 years and counting.

Richland
FEDERAL CREDIT UNION
www.richlandfcu.com



201 West Holly St. • Sidney, MT
(406) 482-2704
18 East 2nd St. • Culbertson, MT
(406) 787-5890

Pay \$0 Down

and Upgrade your Phone!

Stop By The Office During The Fair To Learn About Our New Plans!



Mid-Rivers
COMMUNICATIONS
204 N. Central Ave., Sidney, MT
433-6782 • www.midrivers.com

The cost of your device is billed in 24 equal installments with zero interest on your monthly statement. Upgrade requires current device to be paid off in full. Requires credit check, and upfront deposit on device(s) may be required based on customer's credit history. Applies to all cellular phones & devices. Existing agreements remain valid through the life of the contract.

We hope to see you at Co-op Days & 4-H Livestock Auction at the:

Richland County Fair & Rodeo

"Building Memories One Fair At A Time!"

Homeowners • Farmowners • Property Coverage
Personal & Farm Liability • ID Theft Recovery

LaDean Edam • Savage
Carol Fatzinger • Poplar
Becky Reidle • Sidney



Richland Farm Mutual Insurance Company **406-488-4898**
216 S Central Ave, Suite B • Sidney, MT

For Taylor Searer, 4-H Involvement Will Be A Life-Long Interest



By Meagan Dotson
Taylor Searer, a 2015 graduate of Sidney High School, is in his eleventh year of 4-H and his fourth year as an Ambassador, or representative of the 4-H program in Richland County. He is entering hogs, steers, and goats to be judged at his final Richland County Fair 4-H judging and showing.

Searer will be showing one of his two steers, which he began working with over the 2014-2015 winter and one of his three hogs that he got in February of this year. Wednesday August 5th from 10:00 am until 2:00 pm livestock exhibits will be entered and market beef will weigh in and from 3:00 pm until 4:00 pm hogs, sheep, and goats will weigh in. Beginning at 8:30 am on Thursday August 6th swine, sheep, dairy and breeding beef, and goats will be judged and market beef will be judged at 5:00 pm. Friday August 7th 4-H Junior and Senior showmanship will start at 8:00 am

and the 4-H livestock sale will be held at 5:00 pm in the 4-H arena. Two percent of all sales will go to the 4-H program and the rest of the money is profit for the 4-H member, after deducting the cost of expenses.

Searer explains the responsibility and work that goes into raising and showing animals including proper feeding to get the animal to the ideal weight for their frame, or 'finishing', making sure they have access to clean water, cool conditions particularly for the hogs, and working with them for showmanship purposes. He also talks about knowing his limitations, determining how many animals he could care for without overwhelming himself. But, 4-H isn't just about raising and showing livestock. Searer also has painting, drawing, and wood working projects, what are considered indoor projects that are being entered in the fair; 4-H requires members to have at least one indoor project entered in addition

to any livestock entries and with countless projects for all interests, there is certainly something for everyone.

As a Richland County Ambassador, Searer has attended Fall Training which is only for 4-H Ambassadors, where they learn leadership skills, Rec Lab, and Congress.

"I find that 4-H is fun and enjoyable. Being an Ambassador I've gotten to meet a lot of people throughout the state," said Searer and adds, "The friends that I've made in 4-H are lifelong friends."

Though this will be Searer's last year entering 4-H projects in the Richland County Fair, he plans on volunteering and being available to help out when he can.

"4-H doesn't just end; you can always be involved. My dad has been involved in 4-H his whole life pretty much and he got his kids involved and when I have kids they will be involved too. All the work pays off in the end," he noted.



Taylor Searer with his steer at the 2014 Richland County Fair and Rodeo.

Enjoy Co-op Day at the Fair!



Rob Breuer
Branch Manager



Penny Brown
Financial Specialist



Northwest
FARM CREDIT SERVICES

406-433-3920 • 800-769-1040 | www.northwestfcs.com

Welcome to the Richland County Fair & Rodeo

Stop by for a free root beer float during Co-op Day at the fair starting at 4 p.m. Thursday, August 6th



Member-Owned Cooperative Serving Richland County Since 1937

LYREC

LOWER YELLOWSTONE RURAL ELECTRIC COOPERATIVE

Your Touchstone Energy Cooperative



3200 W. Holly • Sidney, MT | 406-488-1602 • www.lyrec.com



415 9th Ave NE • Sidney, MT 59270
406-433-3014 • Fax: 406-433-3018

PO Box 177 • Lambert, MT 59243
406-774-3331 • Fax: 406-774-3332

Sweley Location: 1123 10th Ave SE • Sidney, MT | 406-433-2508

Local Farmer-Owned Cooperative Since 1938

Lambert

406-774-3331 | 101 1st Ave. SW

- Grain Elevator • Service Station
- Custom Applications • 24 hr Fuel
- Propane Truck • Trailer Repairs
- Fertilizer • Chemical
- Full Drive-thru Truck Bay
- Truck Lounge & Shower

Sidney

406-433-3014 | 425 9th Ave. NE

- Grain Terminal • Specialty Crops
- Custom Hauling • Livestock Feed
- Bulk Fuel & Propane Delivery • Roller Mix



THE
LODGE
Managed by
SIDNEY HEALTH CENTER

Community pride is a way of life for some of us... Fair time reminds of us of our community. At The Lodge, residents live independently, like they always have, yet have opportunities to stay involved in the community.

Senior Living at its Best • Come Home to The Lodge!

1015 7th Ave SW • Sidney, Montana
Phone: 406-488-4682 • www.lodgeatlonetree.org

Enjoy All The Fair Has To Offer!

Check out the community seed pictures in the Agricultural Building...



They're awesome!



Fairview, MT 59221
Office: 406-742-5549



See The **THE DODGE BOYS**
At The Richland County Fair!



RAM



JEEP



CHRYSLER

ACTION
AUTO



GARY MCPHERSON
Hm: 488-7759



GARY SCHLOPP
Cell: 489-2912



JON NELSON
Cell: 206-669-5285

433-2312 • 1-800-788-2312
www.actionautochryslerdodgejeep.com
220 East Main, Sidney, MT



2015 RICH. CO. FAIR SCHEDULE

WEDNESDAY:

6:00 am - Agriculture Building opens to accept Floriculture exhibits
8:00 am - Judging: Agriculture, Horticulture, & Floriculture exhibits
8:30 am - Judging: 4-H Horse Classes and Showmanship
10:00 am - 2:00 pm - All 4-H Livestock exhibits entered weighing of 4-H Market Beef
10:00 am - Fair Office opens
11:00 am - Event Center opens

Throughout the Day:

- North Star Amusements Carnival at 4pm The Market Place, Exhibits, Displays, etc.
- Jeff Martin~ The Blond Curly-Haired Magician; (Inside the Old Commercial Building & Strolling)
- 2:00 pm to 2:30 pm**
- 4:00 pm to 6:00 pm-strolling**
- 7:30 pm to 8:00 pm**
- Lloyd & Willy (Free Act Stage)
- 1:00 pm to 2:00 pm**
- 4:30 pm to 5:30 pm**
- 6:30 pm to 7:30 pm**

1:00 pm - Flag Raising Ceremony in the Oval
3:00 - 4:00 pm - Weighing: 4-H Hogs, Sheep, & Goats
4:00 pm - Judging: 4-H Poultry
6:00 pm - Judging: 4-H Dogs, Cats, Rabbits
7:00 pm - Small Animal Round Robin
7:30 pm - Tigirlily (Free concert)
10:00 pm - Agriculture Building closes
Event Center closes
11:00 pm - Fair Office closes

THURSDAY: CO-OP DAY

8:30 am - Judging: 4-H Livestock Judging (Swine, Sheep, Dairy, Breeding Beef, Goat)
10:00 am - Fair Office opens
11:00 am - Agriculture Building opens
Event Center opens

Throughout the Day:

- North Star Amusements Carnival at 1 pm The Market Place, Exhibits, Displays, etc.
- Jeff Martin-The Blond Curly-Haired Magician (Inside Old Commercial Building)
- 2:00 pm to 2:30 pm**
- 4:00 pm to 6:00 pm (strolling)**
- 7:30 pm to 8:00 pm**
- Lloyd and Willy (Free Act Stage)
- 1:00 pm to 2:00 pm**
- 4:30 pm to 5:30 pm**
- 6:30 pm to 7:30 pm**
- Freckle Farm Petting Zoo
- 1:00 pm to 8:00 pm**
- The Chicken Rider (Strolling)
- 12:30 pm to 1:00 pm**
- 4:00 pm to 4:30 pm**
- 5:30 pm to 6:00 pm**
- 7:00 pm to 7:30 pm**

4:00 pm - gone - Free Root Beer Floats in the Sponsor Tent for Co-Op Day
5:00 pm - Judging: 4-H Market Beef
7:30 pm - PRCA Rodeo presented by Brookman Rodeo, LLC- Military Appreciation Night . After the Rodeo - Beer Garden Entertainment: "Relics" (formerly Spectrum)
10:00 pm - Agriculture Building closes
Event Center closes
11:00 pm - Fair Office closes

FRIDAY:

8:00 am - 4-H Showmanship (Sr./Jr.)
10:00 am - Fair Office opens
11:00 am - Agriculture Building opens
Event Center opens Large Animal Round Robin (Sr./Jr.)

Throughout the Day:

- North Star Amusements Carnival at 1pm, The Market Place, Exhibits, Displays, etc.
- Jeff Martin-The Blond Curly-Haired Magician (Inside Old Commercial Building)
- 2:00 pm to 2:30 pm**
- 4:00 pm to 6:00 pm (strolling)**
- 7:30 pm to 8:00 pm**
- Lloyd & Willy (Free Act Stage)
- 1:00 pm to 2:00 pm**
- 4:30 pm to 5:30 pm**
- 6:30 pm to 7:30 pm**
- Freckle Farm Petting Zoo
- 1:00 pm to 8:00 pm**
- The Chicken Rider (Strolling)
- 12:30 pm to 1:00 pm**
- 4:00 pm to 4:30 pm**
- 5:30 pm to 6:00 pm**
- 7:00 pm to 7:30 pm**

4:00 pm - Trophy & Awards Presentation (4-H Arena)
5:00 pm - 4-H Livestock Sale (4-H Arena)
7:30 pm - PRCA Rodeo presented by Brookman Rodeo, LLC. Tough Enough to Wear Pink Night. After the Rodeo - Beer Garden Entertainment: Dan Hunthausen and the Train Wrecks
10:00 pm - Agriculture Building closes
Event Center closes
11:00 pm - Fair Office closes
SATURDAY: ONEOK ROCKIES MID-STREAM DAY
Serving FREE Watermelon
10:00 am - 4-H Member & Alumni Obstacle Course
10:00 am - Fair Office opens
11:00 am - Agriculture Building opens
Event Center opens

Throughout the Day:

- North Star Amusement Carnivals at 12:00 pm (Noon) The Market Place, Exhibits, Displays, etc.
- Jeff Martin~ The Blond Curly-Haired Magician; (Inside the Old Commercial Building & Strolling)
- 2:00 pm to 2:30 pm**
- 4:00 pm to 6:00 pm-strolling**
- 7:30 pm to 8:00 pm**
- Lloyd & Willy (Free Act Stage)
- 1:00 pm to 2:00 pm**
- 4:30 pm to 5:30 pm**
- 6:30 pm to 7:30 pm**
- Freckle Farm Petting Zoo
- 1:00 pm to 8:00 pm**
- The Chicken Rider (Strolling)
- 12:30 pm to 1:00 pm**
- 4:00 pm to 4:30 pm**
- 5:30 pm to 6:00 pm**
- 7:00 pm to 7:30 pm**

7:30 pm - Martina McBride with special guest Love and Theft. After the Concert - Beer Garden Entertainment: Dan Hunthausen and the Train Wrecks
9:30 pm - Event Center closes Agriculture Building closes
12:00 am - Fair Office closes



ENJOY THE
RICHLAND COUNTY FAIR!

Crop
Production
Services



Fairview



Now Handling:
• Water Tanks & Parts
• Side By Side & 4-Wheeler Sprayers
Plus All Your Crop Herbicide & Insecticide Needs!

Greg Breuer

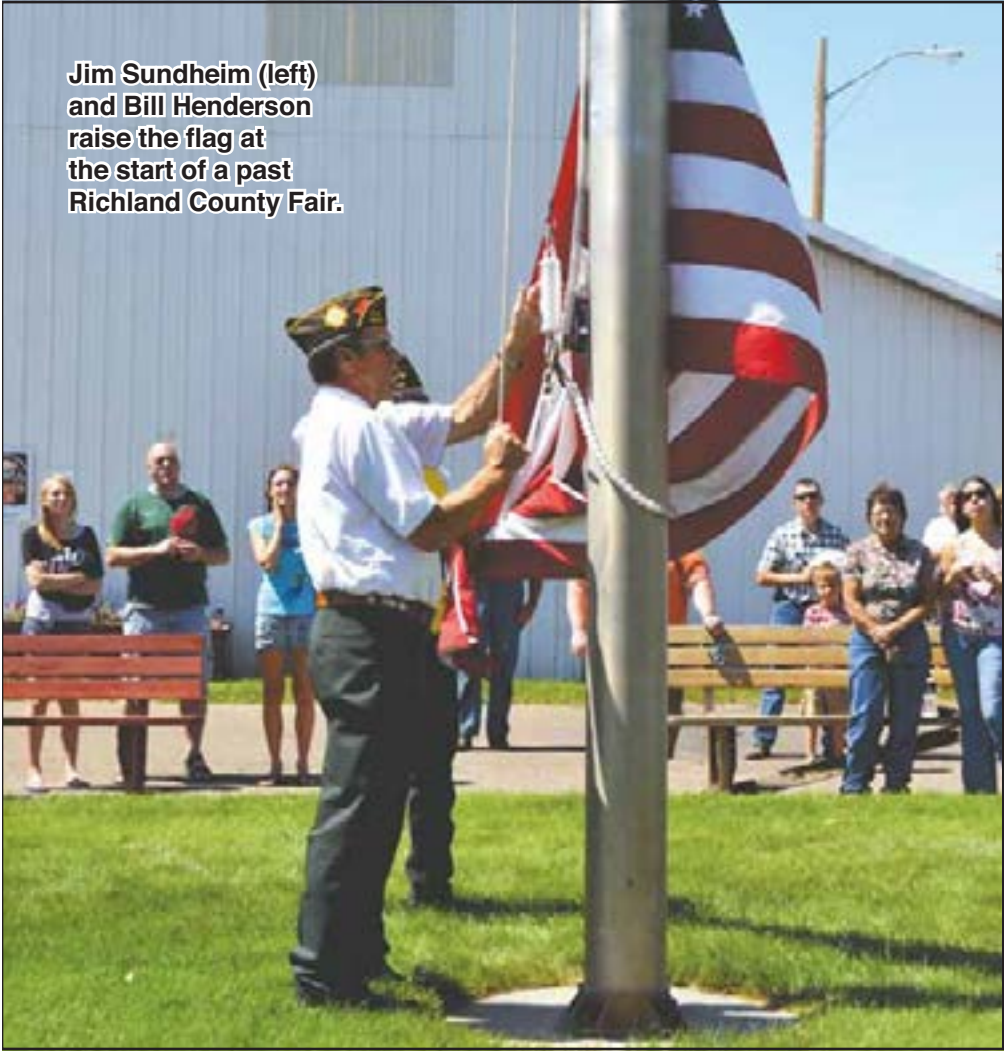
Cell: 406-489-3429 • Office: 406-742-8800

ENJOY THE RICHLAND COUNTY FAIR & RODEO

Good luck to all the exhibitors and 4-Hers



Jim Sundheim (left) and Bill Henderson raise the flag at the start of a past Richland County Fair.



Flag Ceremony Opens Richland County Fair

Military Appreciation Day Set For Thursday

Montana sees a large proportion of its sons and daughters sign up for tours of duty with various branches of the military. These men and women unselfishly protect our way of life and ensure that citizens continue to enjoy the many freedoms this country of-

fers. To honor and salute those in past and present service to our country, the Richland County Fair will hold a military flag raising ceremony on Wednesday, Aug. 5 at 1 p.m. at the Oval to kick off fair festivities. The Fair Board has also designated Thursday, Aug. 6,

as Military Appreciation Day at the fair.

During the Rodeo on Thursday, Aug. 6. Military Appreciation Night will recognize and pay tribute to area servicemen and women.

Harvey Senn
CLTC®, LUTCF, FIC
Financial Associate
Office: 406-433-6143

Ron Gebhardt
CLTC®, FIC
Financial Associate
Office: 406-433-5287

1050 S. Central Ave.
Sidney, MT 59270
Toll-free: 877-433-6143

THRIVENT FINANCIAL®
Connecting faith & finances for good.®

BE PART OF
THE THRIVENT STORY

Thrivent is a membership organization of Christians ... We help members be wise with money ... And live generously. The result is stronger members, families and communities.

+ **+** **+** **=**

WORLD'S MOST ETHICAL COMPANIES®
www.ETHISPHERE.COM

Thrivent Financial was named one of the "World's Most Ethical Companies" by Ethisphere Institute 2012-2015.

Let's start a new conversation about money.

Appleton, Wisconsin • Minneapolis, Minnesota
Thrivent.com • 800-847-4836

28304 N8-14

We Have All Your Fair, Reunion & Picnic Supplies!

WHOLESALE PRICES!

East-Mont Enterprises Inc.

Pop • Chips • Water • Nacho Cheese
Coffee • Salsa • Candy • Plates
Napkins • Cups • Cutlery

Popcorn Popper & Cotton Candy Machine for Rent
Sno-Kone Machine

608 E. Main | Sidney, MT | 406-433-2910
Locally Owned | Special Orders Welcome

Nutt-N Better Ice Cream Shop

Closed Wed-Sat for the Fair

Novelties • Indoor & Outdoor Seating

Blue Bunny Hard Ice Cream

212 2nd St SE | Sidney, MT | 406-433-4232
Come See Us Sunday, August 9th

Make Some Memories! August 5th - 8th



Richland County Commissioners

Loren Young | Shane Gorder | Duane Mitchell

The Berka Family’s Venture West Finds Them As One Of The Newest Fixtures At The Richland County Fair

IN-THE-FIELD
FARM TIRE
SERVICE



We're
ready
to
serve
you!

WESTERN TIRE CO.
1601 SOUTH CENTRAL • SIDNEY, MONTANA
433-3858 • Open 7-5:30 M-F & 7-Noon Sat.

Come See Us At The Fair!



TRAERER
Excellent Selection of Traeger
Grills & Accessories In Stock!
**CHECK OUT OUR
FAIR SPECIALS!**

Over 150 Trailers
15 Truck-Bed Sizes
Concrete Form Rental

B&B
SALES & SERVICE
TRAILERS
SIDNEY, MT

YANAMA
GOLF CARTS

Used Golf
Carts In
Stock!

Mark Brodhead | Manager • 406- 480-7332 (Cell)
34940 Hwy 23, south of Sidney by the Flashing light
Office: 406-433-1888 | Open M-F: 8am - 5pm • Sat: 9am - 1pm
www.bbsalesandservice.com



Tyler Berka (left) and her dad Pat Berka (right) selling kettle corn and Italian ice at an out of town event.

By Meagan Dotson
Pat and Allison Berka bought the Women of the Moose booth at the Richland County Fairgrounds in 2013, making them and their vending business, Burly's Kettle Corn and Italian Ice, one of the newest fixtures of the fair.

The Berkas began their vending venture six years ago after the economy in Colorado went into a tailspin; Pat Berka, not being one to sit around and wait, began brainstorming with his wife Allison, son Camden, now 17, daughter, now 13, and some family friends. They decided to try selling kettle corn as it is easy to transport and spent one Fourth of July trying different recipes out on willing friends. The family sold their house and began an adventure, moving into their camper heading west, selling kettle corn, and looking for the right place to settle down... and had a lot of fun doing it. The Berkas lived in Hood River, Oregon for two years with vending being their primary source of income until, at the suggestion of a friend, Pat Berka decided to move to Sidney and work in the oil field and his family followed suit in 2011 once they were sure that the MonDak area was the right place for them to be.

Vending is now something fun the Berkas do as a family. During their three and a half month season they sell kettle corn and Italian ice at five to eight events such as Homefest in Watford City, ND, the Fourth of July Celebration

in Lambert, MT and, of course, the Richland County Fair.

Before buying the WOM booth, they rented a space underneath the grandstands which presented some challenges as they had to pop all the corn at home and bring it with them; the booth provides them with plenty of space for popping and half of the booth is seating where people can get in out of the hot sun. The booth is also in a great location, between the Richland Ranger Hockey Booth and the Lonsdale United Methodist booth.



For the Berkas, Sidney is the right place for them as they like small towns with a sense of community and the family is happy to continue the business and spend time together while doing it.

Burly's Kettle Corn and Italian Ice have customers who seek them and their delicious products out at regular events, so for anyone who hasn't had the opportunity to become a fan, be sure to stop by and check them out at the Richland County Fair, Wednesday August 5th through Saturday August 8th; for more information contact Pat Berka at 978-846-3597.

We Still Do Business the Old-Fashioned Way...

...We Look You in the Eye and Shake Your Hand.

We also pay attention to details & market your cattle to their very best ability.
Your product is produced with integrity, let us market it that way.



PREWITT & COMPANY, LLC

756 10th Ave SE • Sidney, MT 59270
406.482.5251 • www.prewittandco.com

Rod Prewitt 406.480.2777 Tim Larson 406.480.2666 Mike Yore 406.480.2888

SLMC
SIDNEY LIVESTOCK MARKET CENTER

720 10th Ave SE • Sidney, MT 59270
406-482-3513 • www.sidneylivestock.com

Christy Albin-Office 406-482-3513 Tim Larson 406-480-2666

WORKING HARD
TO BUILD A
COMPETITIVE
MARKETPLACE
FOR YOUR
LIVESTOCK.

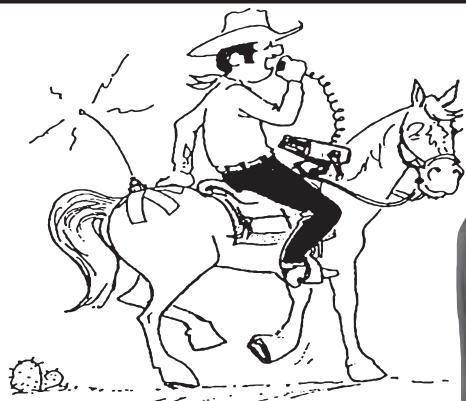
Enjoy The Richland County Fair!



**We Will Be Closed
August 3rd - 10th**
So our employees can enjoy the fair

Fairview, MT
406-742-5180

Your Ability To Communicate Starts Here!



Keeping in Touch

ADVANCED
COMMUNICATIONS

Come See Us at the Office and then Enjoy the Fair!

WE CAN KEEP YOUR COMMUNICATIONS CLEAR STARTING WITH:

- Great Line of Kenwood 2-Way Radios
- Long Range Communications To Cover Your Area
- SPOT For Your 911 Protection
- Pagers To Keep In Touch
- Globalstar Satelite Phones • FREE Phone (call for details)



Call Larry Today at: 406-433-1659 • Toll Free: 1-800-433-1659 | Just North of McDonald's • Sidney, MT

2015 Fair Food Booths & Menus

Asian Garden – Chicken Chow Mein, Ribs, Egg Rolls, Chicken Fried Rice, Bubble Tea, Pepsi products

Boy Scout Troop #141 - Cotton Candy, Popcorn, Hot Dogs, Nachos, Pop, Lemonade, Iced Tea

Burly's Kettle Corn - Italian Ice, Kettle Corn

Dippin Dots - Dippin Dots Ice Cream, Bottled Water, Pop

Mini Brewster - Mini Donuts, Coffee, Espresso Coffees, Lattes, Water, Lemonade, Ice Tea

Honolulu Ice & Bean - Shaved Ice

Lonsdale UMC – Hamburgers, Hot dogs, Pies, Ice Cream, Pop

Montana Big Sky BBQ - BBQ Beef Sandwich, BBQ Sausage, BBQ Pork Sandwich, BBQ Chicken Sandwich, BBQ Rib plate, BBQ Chicken Kabob, BBQ Pork Kabob, BBQ Sausage Kabob, BBQ Nachos, BBQ Beans, Cole Slaw, Chips & Salsa, Ice Tea, Lemonade, Pop, Energy Drink, Chocolate, Caramel, Pecan Brownie

Pella Lutheran - Hamburgers, Cheeseburgers, Hotdogs, Grilled Cheese Sandwiches, BBQ Beef, Baked Beans, Pie and Ice Cream, Pop, Bottled Water, Coffee, Pepsi Float, Iced Tea

R.C. 4-H Council – Cattlemen (BBQ brisket, fried onions), Hamburger, Cheese-

burger, Double Burger, Barn Burner (burger, jalapeno, pepperjack, fried onions), Farmer (burger, mushrooms, fried onions, cheese), Meatpacker (burger, BBQ brisket, fried onions), Hot Dog, Cluckin' Chicken (chicken fajita, flatbread, fried onions, cheese, lettuce), French Fries, Cowboy Fries (brisket, nachocheese, fried onions, jalapenos), Cowboy Corn (bacon wrapped corn on the cob), Chips, Lil' Wrangler Fried Pickles, Pie, Ice Cream, PB&J Frozen Yogurt, Cinnamon/Carmel Rolls, Coffee, Hot Chocolate, Water, Pop, Iced Tea, Lemonade. Breakfast: Hotcakes, Eggs, Toast, Sausage, Bacon, Biscuits/Gravy, Breakfast Sandwich (biscuit, sausage, cheese, egg), Hashbrowns

Richland Hockey - Fleisch Kuechle, Cheeseburger, Hamburger, Texas Toast Bacon Cheeseburger, Hot Dog, Grilled Cheese Sandwich, Nachos, Chili Cheese Nachos, Deep Fried Twinkies, French Fries, Ranger Fries, Chili Cheese Fries, Hand-Dipped Ice Cream Bars, Pop, Water

Sharon's Deli & Catering – Indian Taco, Super Nachos, Chicken Strips, Mini Corn-dogs, Frybread, Fries, Cheesy or Chili Fries, Super Dog, Hot Dog, Polish Dog, Pop, Water, Lemonade, Iced Tea

Sidney Baseball – Hamburger, Cheeseburger, Baseball Burger, French Fries,

Grilled Cheese, Grilled Ham & Cheese, Shrimp, Ice Cream, Coolers, Lemonade, Tea, Coffee, Pop,

Sons of Norway - Norske, Vikings, Hot Dogs, Water, Coffee, Iced Tea, Pop, Lemonade

St. Matthews Church - Pizza by the Slice (1/4 Pizza), Pop, Water, Lemonade

The Main Link - Homemade Bratwursts, German Dogs, Cheddar Dogs, Polish Dogs, Prairie Fire, Hot Dogs, Iced Tea, Pop, Lemonade, Water

Vitt's Viddles - Hot Dog, Polish Dog, Taco in a Bag, Nachos, Ham & Cheese Sandwich, Roast Beef Sandwich, Cookies, Bars, Chips, Pickles, Pop, Water

Woody Eats & Treats - Bloomin' Onions, Funnel Cakes, Deep Fried Oreos, Deep Fried Snickers, Chicken Strips, Corn Dogs, Shrimp, Fries, Water, Lemonade, Pop

Wrestling Boosters – Pulled Pork Sandwiches, Pulled Pork Nachos, Pizza Sticks, Whistling Pig (deep fat fried hotdog wrapped in bacon), Gems, Fudge Bars, Eagle Special: Gems with Pulled Pork, Pop, Lemonade, Iced Tea

Yadon's Yummies - Nachos, Super Nachos, Corn-dogs, Hotdogs, Popcorn Chicken, Shaved Ice, Fresh Squeezed Lemonade, Pop



Building or Remodeling?

Mid Continent constructs beautiful cabinetry for the home. We specialize in product styling that is aligned with updated home fashion. FREE in-house computer design.

Enjoy The Richland County Fair & Rodeo!

PROBuild

Mon.-Fri. 7:00 am - 5:00 pm

Sat 8:00 am - 1:00 pm

www.probuild.com

100 14th Street SE, Sidney • 406-433-2012

Welcome To The County Fair & Rodeo!

See Us For All Your Car, Truck & Farm Tires



On the farm service!



LEE'S
TIRE AND SERVICE CENTER



349 22nd Ave
NW, Sidney
406-488-6636
1-800-967-3795

Enjoy the Richland Co. Fair

We Are Your Oil-Field Supply Headquarters

- Balon Ball Valves
- Gates, Hydraulic Hoses & Belts
- Tubing Anchors
- Line Pipe
- Tubing
- Fittings
- Down Hole Sucker Rod Pumps



1511 South Central Ave • Sidney, MT
406-488-8706 • Fax: 406-488-8708
rpands@midrivers.com

8221 62nd St. NW • Stanley, ND (Old Hwy 2)
701-628-8706

By Meagan Dotson

At the 2015 North Dakota Music Awards, Tigrilily was awarded Best Original Band, Best Song, Best Video, Best Stage Show, and the U Rock Award, which is given in recognition of artists who give back. They are looking forward to their upcoming performances and are thankful for all those who come out to support them. For more information, visit www.tigrilily.com.

COME SEE US AT THE FAIR!

Structures To Fit Every Need!

Excavation To Completion, Or Materials Only

DESIGN SERVICES AVAILABLE!

INDEPENDENT AUTHORIZED BUILDER



A Division of Chief Industries, Inc.

The builder's choice in metal building solutions.









Grain/Industrial Division

GRAIN STORAGE AVAILABLE



FABRIC BUILDING AVAILABLE

Jim Bell, Manager: 406-480-7249


Mon-Fri: 8am - 5:30pm • Sat: 9am - 1pm | 406-433-1888

34940 Hwy 23 • Sidney, MT (South of Sidney at the Flashing Light)

WESTERN APPAREL
SADDLE UP
ON MAIN STREET
SIDNEY - MT

**FEATURING
BOOTS BY**

Tommy Lama
BOOTS



YES, WE ARE OPEN!
COME CHECK US OUT
THERE'S NOT JUST ONE WESTERN STORE IN TOWN

703 EAST MAIN
SIDNEY, MT

406-433-2629 • SADDLEUPTACK@HOTMAIL.COM

Bring in this ad for 15% off all non-sale items

WELCOME TO THE FAIR!
Stop By, Cool Off & Check
Out All We Have To Offer!
HIGH CALIBER SPORTS

Mon-Sat: 9am - 6pm • Sun: 10am - 4pm
440 N Central Ave • Sidney, MT
Shops at Fox Run • 406-433-1800