



The Roundup

PRSR STD
U.S.
POSTAGE
PAID
The Roundup

(406) 433-3306 or 1-800-749-3306
Fax (406) 433-4114
e-mail address:
info@roundupweb.com
www.roundupweb.com

Business Office:
Located at 111 West Main
Sidney, MT

Mailing Address:
P.O. Box 1207
Sidney, MT 59270

Wednesday, May 15, 2013

Volume 39 • Number 13

Snowbirds to Fly May 22

By Ashley Harris

The Canadian Snowbirds will fly over Sidney again Wednesday, May 22. The aircraft demonstration team will arrive at the Sidney/Richland County Airport at approximately noon. There will be a "meet and greet" event at the airport that evening, with the free performance beginning at 6p.m.

The Snowbirds began back in 1971, following the 'Golden Centennaires' who flew formations for Canada's centennial year four years prior. After a few years, they were made an official unit of the Canadian Forces.

The Snowbirds fly basic pilot-training aircraft, which can reach speeds of 470 miles an hour. All members of the Snowbirds are personnel of the Canadian Forces who have accumulated many years of military experience. They are selected based on their skill and experience and go through a rigorous series of try-outs to check their proficiency in formation flying. With a third of the pilots rotating out through a three year period, the team trains the new members in.

The Snowbirds fly approximately 70 shows a year at 50 different locations across North America. This causes the unit to be traveling for six months out of the year. In those six months, they will return to their home base about four times for a couple days in order to do maintenance.

In order to get the Snowbirds at a venue, applications must be put in two years in advance. This makes this scheduled appearance in Sidney almost unheard of. For more information on the Canadian Snowbirds please go to their website at: www.snowbirds.dnd.ca.

2013 Town & Country June 22

By Dianne Swanson

Plans are being finalized for the annual Town & Country Festival which will take place in Sidney Saturday, June 22. The full day of events starts off at 7 a.m. with registration for the Sidney Healthworks Fun Run. The run begins at 8:00 a.m. at Sidney Health Center.

Businesses and individuals are encouraged to enter a float in the parade that morning. The parade will begin in the Reynolds Market parking lot and travel north on Central Avenue to 2nd Street NW. Please call the Chamber to register your entry.

Main Street will be the site for a free noon meal, vendors and fun for all ages. Any group wishing to have a booth is encouraged to call the Sidney Chamber office. Merchants are also encouraged to participate with sidewalk sales.

Richland Opportunities will have a silent auction basket sale in the Village Square Mall from 10:00 a.m. to 2:00 p.m.

A 3 on 3 basketball tournament organized by the Chamber's Sports and Rec committee will also take place at the Sidney Middle School courts with Sidney Lady Eagle coach Jace Sullivan as Chairman.

The afternoon events include the Neal Hermanson Memorial Rodeo at the fairgrounds, which begins at 2:00 p.m.

Kick up your heels after the rodeo to the music of "Those Guys" in the beer garden at the fairgrounds.

In conjunction with the Town & Country Festival, the MonDak Heritage Center will host "I Do", a cultural history of Montana weddings. The "wedding reception" starts at 2 p.m. with a presentation by Martha Kohl, historian from the Montana Historical Society, sponsored by Humanities Montana. Tickets are on sale now at \$25 for members and \$30 for non-members.

Arnegard Centennial Celebration Planned

Finished in 1915, the Arnegard Public School building is one of the historic buildings still standing in town. It now houses the Old School Bed & Breakfast.



By Ashley Harris

Along with their traditional 4th of July events the City of Arnegard will celebrate its Centennial this year with special events planned through the 7th.

Starting out the celebration on the 4th of July will be the traditional parade, games and Beef BBQ at noon, which is sponsored by the George Fleck family this year. An evening of fireworks will finish off the day.

The festivities continue with registration Friday, July 5th at 10 am followed by time for class reunions and socializing from 1pm to 6pm. Wrapping up the first evening will be 'Hamburgers in the Park' served by the Arnegard Lions Club and a dance in the park with music by the 'Falcon Brothers' out of Trenton.

Saturday is a day full of events and festivities. In honor of the centennial, there will be a parade at 11am with lunch

available from the Arnegard 4-H Club from noon until 3pm. The afternoon will be full of class reunions, socializing and kids' games at the ballpark. Visitors will enjoy the memorabilia at Wilmington Church and the Old School B&B. Starting at 6pm there will be a banquet, which the committee requests you RSVP for. Wrapping up the evening, the 'Falcon Brothers' will again provide live music from 8pm to midnight.

The celebration will continue into Sunday, with 'Breakfast in the Park' served by the Arnegard Booster Club from 8am until 1pm. A non-denominational church service at Wilmington Church at 11am, followed by a farewell gathering will complete the festivities.

The centennial celebration will give those who are associated with Arnegard, whether past, present or even the future, a chance to meet up and celebrate the city's past.

Ribfest 2013 Set For Aug. 9 in Watford City

Submitted by Jessie Scofield

The Ribfest 2013 Planning Committee has set Friday, August 9th for this year's event on Main Street, Watford City.

Concessions and the Street Fair will start at 10 a.m. and the rib contest will take place at 5 p.m.

A \$1,000 prize will be awarded for the team with the

best ribs. Second place will receive \$500 and there will be a \$250 prize for booth showmanship. The public will also get a chance to vote for their favorite ribs and the winning team will receive Ribfest T-shirts and the coveted "People's Choice" award.

The day will be filled with live music from local talent Jessie Veeder, Lonesome Willy, Getting' Outta Dodge and Jeff Meyer. Other

events include inflatable kids' games, train rides, a dunk tank and a children's "Show-down" at noon where prizes will be awarded for the best western wear.

The public will also enjoy the Classic Car Show and a few friendly rounds of Bingo during the day. There will be street vendors and several ping pong drops that will offer special deals from Main Street businesses and the night will end with a street dance featuring the national touring band "Smokehouse" on Main Street at 8 p.m.

"This event has quickly become a huge success and it gets bigger and better each year,"

said Janel Lee, committee member. "It's a great way to unwind, engage in friendly competition and celebrate the best things about summer and our community."

The Best of the West Ribfest is limited to 20 teams. If you're interested in registering a team, sign up by June 1st to receive \$50 off your registration. Teams, food and craft vendors and Classic Car Show participants may register online at www.watfordcityribfest.net.

Ribfest is also looking for sponsors. If you are interested or have questions contact the Watford City Chamber of Commerce at 701-580-1493 or wcchamber@ruggedwest.com for more information.

Space is limited for this exciting event, so make your plans today!



Lawrence Speldrich Jr.

Fugitive Captured

From the Richland County Sheriff's Office, acting on information developed during the investigation of Lawrence Speldrich Jr.'s escape.

Officers of the Sidney Police Department were able to apprehend Speldrich at approximately 10 p.m. Wednesday night. He was located in an alley behind a local business in northwestern Sidney, MT. He was arrested without incident and incarcerated at the Richland County Jail. The Richland County Sheriff's Office wants to thank all of the agencies that assisted in searching for Mr. Speldrich and those who provided information leading to his arrest.



Unreal RC

The Ultimate in Remote Control Hobbies

Brushless Electric -
Greater Speed and Reliability

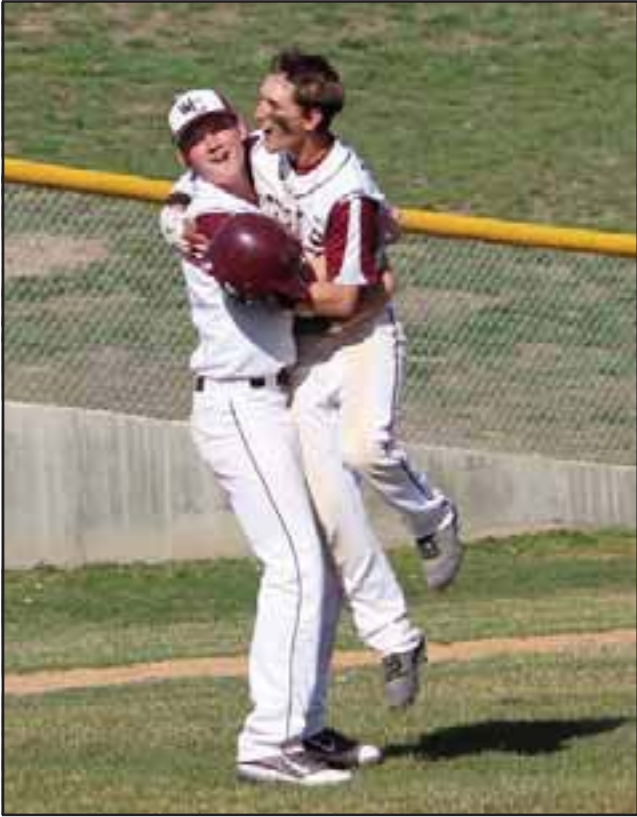
**GAS & ELECTRIC CARS, TRUCKS,
PLANES, BOATS AND HELICOPTERS**

701-577-1032
Located In
Chaney's Total Auto



Watford City Wolves
Baseball Team

Back row: Quayde Shores, Nate Egeberg, Dewey Purcell, Mitchell Liebel, Andrew Sampsel, Tyler Bates, Brice Brenno, Dakota Neether, Davis Zubke, Brandon Alex, Brandon Roff & Coach Justin Johnsrud. Front: Jackson Voll, Ross Boudreaux, Devyn Marquardt, Tyler Krabbenhoft, Keegan Thompson, Brandon Taylor, Dustin Kleppen, Josh Rockeman, Nick Wright, Tim Peterson & bat boy Judd Johnsrud.



Wolves Secure First Seed
at Regionals

Brandon Taylor and Dakota Neether Celebrate after Taylor hit a walk off double bringing in the winning run in the bottom of the 7th against Lewis & Clark on Tuesday. The Wolves secured a first place seed for the Region Tournament on their home field beginning Monday, May 20 at noon. (Photos by Kathy Taylor)

"Summer's Finally Here"

Sales Event

Now Through
Saturday, June 1

Your Headquarters For:

- Salem • Sandpiper • Cedar Creek
- XLR and More!

Over 50
Pre-Owned Units
On Sale Now!



Shop Local

Bring Us Your Best Deal, And If We Can't Meet It
Or Beat It, We'll Give You A \$100⁰⁰ Store Gift Card

A SAMPLE OF FANTASTIC SAVINGS

| | |
|----------------------------|---------------|
| New 2013 Aviator | Only \$64,995 |
| New 2012 Trilogy | Only \$69,995 |
| Used 2010 Cyclone | Only \$49,995 |
| Used 2008 Jayco 235B | Only \$9,995 |

We Take All Trades!



Family Owned Since 1938
321 Gate Ave. • Williston, ND • 701-572-2250
coatesrvnorthdakota.com

Bring In This Ad
to receive a

\$300⁰⁰

Parts Card

with purchase of a new or
used camper





MOVING POST FRAME FORWARD

Zero-Interest-Loans Available



Specializing in custom
post frame buildings for
residential, agriculture, or
commercial applications



www.mtpostframe.com

Call today for a free quote on your customized building:
Townsend: 406-266-9966 Sidney: 406-202-3093

McKenzie County To Take Part in Vision West ND Planning Session

Submitted by Andrea Boe

McKenzie County leaders and residents will get a chance to take part in strategic planning sessions as part of the Vision West ND project on May 20-21. The Vision West ND project, which covers the nineteen oil and gas producing counties in western North Dakota, officially kicked off its first Planning Session in Watford City in February 2012 and made its rounds to approximately 20 other communities and counties to conduct similar planning sessions.

The McKenzie County Planning Session will take place within a two-day time period. A steering committee of approximately two to three leaders from incorporated cities (Watford City, Alexander, and Arnegard), unincorporated communities (Cartwright, Charbonneau, Grassy Butte, Keene, and Rawson), Mandaree, Four Bears Village, and 16 organized townships is being assembled to take part in the Planning Session. This two day strategic planning session will cover everything from identifying the strategies most likely to succeed in the City to selection of the strategies and drafting a plan. The residents of McKenzie County will be invited to participate in the Planning Session process through a Town Hall public meeting process. The Town Hall public meeting will be held Monday May 20th from 7:00-9:00pm (CDT) at the

McKenzie County Courthouse Meeting Room located at 201 5th St. NW Watford City, ND. Citizens can carry on the conversation even after the planning session by going online at <http://ideas.visionwestnd.com> to share their ideas and comments.

Through this process, the primary goals of the project are to assist communities and counties in the western region of North Dakota in addressing immediate, short-term needs to meet growth management challenges and establish a diversified economy in the future through the development of local and regional strategic plans. The resulting plan will set the stage for economic diversification based on the strength of the oil and agriculture industries and will incorporate and support livability and environmental objectives which speak to the social issues of the region.

The Vision West ND project is funded through the U.S. Department of Housing and Urban Development Regional Substantiality Planning Grant and the ND Energy Development Infrastructure and Impact Grant Fund programs as well as in-kind contributions. For more information about the project and Express Plan Weeks, visit www.VisionWestND.com.

District II Drug & Alcohol Program to Hold Reward and Reminder Educational Program

Submitted by Nicole Hackley

Reward and Reminder is an educational program of merchant surveys conducted to remind tobacco merchants and their employees of the state laws regarding the sale of tobacco products to minors. In this program, clerks are either rewarded with the opportunity to participate in a quarterly \$100.00 gift certificate drawing or reminded of Montana's tobacco laws. Surveys are conducted by local agencies as contracted by the HELP Committee in Havre, Montana. As part of their substance abuse prevention efforts, District II Drug and Alcohol Program undertakes this task. Surveys are conducted three times annually; once in winter, spring, and summer.

As per Montana Code Annotated 16-11-309, The Department of Public Health and Human Services shall conduct inspections of persons selling tobacco products to determine compliance (with tobacco laws). These surveys are conducted by a trained adult accompanying a trained minor, ages 15 to 17. The minor attempts to purchase a tobacco product, while the adult witnesses and reports the inspection transaction.

Reward and Reminder checks are different than official State inspections. These are non-punitive surveys, which means that if a clerk is to make an illegal sale of tobacco to a

minor, there are no fines, fees, and the tobacco license is not suspended. The clerk receives a reminder card that details the Montana Code on illegal tobacco sales to minors. These surveys serve just as a reminder, before the official state checks take place. During the official state inspections, fines are as follows: first through fourth violations-\$25 education fee payable by the clerk, fifth violation-\$25 education fee payable by the clerk and \$500 fee payable by the owner, sixth violation-\$25 education fee payable by the clerk and owner's tobacco license is suspended for three months, and seventh violation-\$25 education fee payable by the clerk and owner's tobacco license is suspended for one year.

Conducting tobacco compliance checks helps Montana maintain above an 80% compliance rate.

District II Drug and Alcohol Program is happy to report that all establishments in Richland County that were surveyed in the most recent round of inspections successfully passed their Reward and Reminder checks. This is very important in helping reduce youth access to tobacco, and shows the strong commitment by the community to help protect our youth. Join us in congratulating all of these establishments in staying compliant with the law when refusing the sale of tobacco products to underage customers.



Yellowstone Chiropractic Clinic

(406) 433-4757 222 2nd. Ave. SW
1-866-433-4757 Sidney, MT 59270



Dr. Ryan Laqua
Chiropractic Physician

- Sports Injuries • DOT Physicals
- Personal Injuries & Pain Conditions



SIDNEY HEALTH CENTER

invites you to

Childbirth Class
Saturday, May 18th

Childbirth Instructors, Joyce Schulz, RN and Katharine King, RN will take you through the childbirth process answering any questions and help to prepare you for the best birth experience possible. Please call the Clinic Receptionist at 488-2510 to reserve your spot. The class is free of charge; however, donations up to \$25 are gladly accepted to cover expenses.

Childbirth Class Schedule:

9:00 AM - 4:00 PM

Sidney Health Center Classroom

PHONE:
488-2510
TO REGISTER

February • May
August • November



SIDNEY
HEALTH
CENTER
Exceptional Care for Life

216 14TH AVE SW
SIDNEY, MT
PHONE: 406-488-2510
WWW.SIDNEYHEALTH.ORG

Final Weeks To Save

40-75% off SIDNEY STORE ONLY
storewide EXCLUDING MATTRESSES AND APPLIANCES



Our Sidney Store
has been sold. It all
has to go and YOU
get the SAVINGS!

Send Them Off To College With:

Inexpensive Dressers • Desks • Lamps



Cash & Carry Only or Delivery Charges Apply • Limited To Stock On Hand • No Returns

FINNICUM'S
Furniture

1051 S. Central Ave.
Sidney • 406-433-5373

NATIONAL NURSING HOME WEEK • MAY 12 - 18



THE 2013 THEME FOR NATIONAL NURSING HOME WEEK IS:

“Team Care”



SIDNEY
HEALTH
CENTER
EXTENDED CARE

At Sidney Health Center Extended Care, we take care of the elderly and learn from their personal journeys. Get to know our community through the people who raised their families in the MonDak region.

Join our team... It's a journey worth exploring!

104 14th Ave. NW • Sidney, MT • 406-488-2300 • www.sidneyhealth.org

For all your Farm/Ranch,
Recreational, Residential,
and Commercial needs.



Alan
Seigfreid

Amanda
Seigfreid


Jim & Janice Knudsen 120 2nd St. N.E. • Sidney Mt. 59270
Broker/Owners (O) 406-433-3010 • (C) 406-489-3010
email: alans@midrivers.com
Website: www.missouririverrealty.com




Assisted Living
Facility



Studios and one bedroom
apartments available for seniors!
Call or click at:
406-228-2208 • www.prairieridgevillage.com




Benefit
For
Doris Olson



To help defray ongoing medical expenses, there will be a Free Will Donation, Roast Beef Dinner, Silent Auction & ⁵⁰/₅₀ Drawing on Friday, May 17th, from 5pm to 8pm at the Sidney Elks Lodge.
Doris is the wife of Tom Olson who is employed at Helena Chemical.

Sidney Elks Lodge
123 3rd St SW



STATISTICS

Lake Water Level Report

| | Sakakawea | Fort Peck |
|-------------------------------|-------------|-----------|
| Current Elevation..... | 1827.8..... | 2222.5 |
| Last Week's Elev. | 1828.2..... | 2222.6 |
| One Year Ago..... | 1835.6..... | 2236.25 |
| Release For Day (C.F.S.)..... | 20,500..... | 8,000 |

Watford City Weather Data

| Source: North Dakota Agricultural Weather Network | | | |
|---|----------|----------|---------|
| Date | High | Low | Precip. |
| May 6 | 73 | 38 | 0.00 |
| May 7 | 78 | 42 | 0.00 |
| May 8 | 62 | 43 | 0.00 |
| May 9 | 63 | 32 | 0.00 |
| May 10 | 65 | 39 | 0.00 |
| May 11 | 59 | 27 | 0.00 |

Sidney Weather Data

| Source: MSU Eastern Agricultural Research Center | | | |
|--|----------|----------|---------|
| Date | High | Low | Precip. |
| May 6 | 76 | 34 | 0.00 |
| May 7 | 80 | 37 | 0.00 |
| May 8 | 66 | 45 | 0.00 |
| May 9 | 69 | 39 | 0.00 |
| May 10 | 64 | 39 | 0.00 |
| May 11 | 62 | 27 | 0.00 |
| May 12 | 84 | 36 | 0.00 |
| Average YTD Precipitation..... | | | 3.05 |

General CRP Signup Starts Soon

Submitted by ND Game & Fish Dept.

Producers interested in submitting bids to enroll land in Conservation Reserve Program acres have from May 20 through June 14. Applications received during the CRP signup period will be ranked against others according to the Environmental Benefit Index.

Kevin Kading, North Dakota Game and Fish Department private land section leader, said there are some EBI factors that producers can influence. "Game and Fish Department private land biologists and other conservation partners such as Ducks Unlimited and Pheasants Forever can help producers find the best possible combination of factors that will positively influence their EBI score, which may increase their likelihood of being accepted into the program," Kading said.

Game and Fish offers cost-share assistance and additional incentives if producers enroll their CRP into the department's Private Land Open To Sportsmen program to allow walk-in access for hunting.

"New to the PLOTS program this year is Game and Fish will make arrangements with contractors to assist producers with land preparation, grass seeding and CRP management," Kading said. This service is offered for producers who enroll CRP in PLOTS in Dickey, Ransom, Sargent, LaMoure, Burleigh, Emmons, McLean, Sheridan, Stark, Hettinger and Adams counties.

Producers should contact the county Farm Service Agency office for more information about the general signup and opportunities with PLOTS. A series of short videos with tips and advice on how producers can maximize their CRP offer, and information about PLOTS cost-share and grass seeding assistance can also be found on the Game and Fish website, gf.nd.gov.

Fairview Community Garage Sale to be Held June 15

The Fairview Community Garage Sale will be held Saturday, June 15. Anyone who wishes to be included on the list of sales is asked to call Joan Eldridge at 701-744-5346. It promises to be a busy day in Fairview with the unveiling of the 2013 Old Timers Reunion button taking place that day as well.

McKenzie Co. Town Hall May 20

McKenzie County is holding a Town Hall Public Meeting, May 20, 7 p.m. (CDT) at the McKenzie County Courthouse Meeting Room, 201 5th St. N.W., Watford City, to review and discuss local strategies for economic and community development. This public meeting is part of a larger Planning Session itinerary for the Vision West ND (regional project) in which a local steering committee of community and community leaders will:

Identify the most viable strategies; seek broad input on desired projects and initiatives; identify existing and desired capacity to implement the plan and begin the process to assign action steps to people and organizations.

"I Do" A Cultural History of Montana Weddings at MHC

You are invited to a "wedding reception" at the MonDak Heritage Center, June 22 at 2 p.m., with a presentation by Martha Kohl, historian from the Montana Historical Society, sponsored by Humanities Montana. Tickets go on sale May 15. Cost is \$25/members and \$30/non-members.

Sons of Norway Events Correction

Sons of Norway will hold their May general meeting on Tuesday, May 14 at 7 p.m. at the Lodge home, 714 East Main Street. Sons of Norway invites you to celebrate Syttende Mai, Norwegian Independence Day, Friday, May 17. Our guest chef Brenda Dahl will be preparing an awesome traditional Norwegian smorgasbord. Food will be served at 6 p.m., followed by a special program. Come to the Lodge home, 714 East Main Street. Wear your bunad (traditional costume) or red, white and blue to celebrate!

EVENTS

SEND US YOUR EVENTS!

THE ROUNDUP: PO Box 1207, 111 West Main, Sidney, MT 59270
406-433-3306 Fax: 406-433-4114
Email: classads@esidney.com

Richland County

Events in Sidney unless otherwise listed. MT Zone.

Thurs., May 16

12 p.m.— Savage Senior Center will host a meal.

12:45 - 1:45 p.m. — Sidney Senior Citizen Center will be having a potluck lunch and cards. For more info. call 406-433-8077.

5 p.m. — TOPS, Crestwood NW entrance, Weigh-ins 5-5:30 p.m., Meeting 5:30-6 p.m.

7 p.m. — Interfaith Community Outreach will host a Coffee Hour at the LDS Church, 1215 5th St SW.

8 p.m. — NA meeting, Millers' Corner banquet room.

Fri., May 17

11:30 a.m. — Sidney Senior Citizen Center will be hosting a meal. For more info call 406-433-8077.

6 p.m. — Sons of Norway Norwegian Independence Day at the Lodge home, 714 East Main St.

Sat., May 18

9 a.m. & 7p.m. — AA Group Trinity Lutheran Church Education bldg.

10 a.m. — Gamblers Anonymous at Millers' Corner.

Sun., May 19

1 p.m. — Savage Senior Center will be hosting cards, coffee, and potluck at 1pm.

6:45 p.m.— Early Bird Bingo at the Moose Lodge regular bingo at 7 p.m.

7 p.m. — AA Group Trinity Lutheran Church Education bldg.

Mon., May 20

11:30 a.m. — Sidney Senior Citizen Center will be hosting a meal. For more info call 406-433-8077.

Noon — AA Group Trinity Lutheran Church Education bldg.

6:30p.m.— Sidney Moose Lodge Pinochle games.

Tues., May 21

7 p.m. — AA Group Trinity Lutheran Church Education bldg.

11 a.m.-6 p.m. — "Fill the Truck" event, Reese & Ray's IGA parking lot.

Wed., May 22

11 a.m.-6 p.m. — "Fill the Truck" event, Reynolds/Shopko parking lot.

6 p.m. - 8p.m. — Interfaith Community Outreach will host a free meal and get acquainted at the Assembly of God Church, 414 E. Main St.

McKENZIE COUNTY

Events in Watford City unless otherwise listed. CT Zone.

Wed., May 15

8 p.m.— Al-Anon, Sanford Room, McKenzie Co. Public Library.

5 p.m. - 7 p.m. — Wine tasting at The Watford, 810 3rd Ave. S.W., \$10/ticket.

Thurs., May 16

8 p.m.— AA Group, Northern Pump & Compression. Call 770-3603 or 770-2675 for directions or ride.

Fri., May 17

9 a.m.-6 p.m.— Quilting at the Missouri-Yellowstone Confluence Interpretive Center.

Sat., May 18

9 a.m.-6 p.m.— Quilting at the Missouri-Yellowstone Confluence Interpretive Center.

11 a.m.-2 p.m.— History ALive at the Missouri-Yellowstone Confluence Interpretive Center, Arch Ellwein portraying Captain Grant Marsh.

12 p.m.— Flag Raising Ceremony at Ft. Buford with the 6th Infantry.

1p.m.— Raising of the Flags at the Masonic Site Yellowstone 88 next to Ft. Buford.

Sun., May 19

3p.m.— Book signing & poetry reading at the Missouri-Yellowstone Confluence Interpretive Center.

Mon., May 20

7p.m.— McKenzie County Town Hall Public Meeting at the McKenzie County Courthouse Meeting Room, 201 5th St. N.W., Watford City.

Mon., May 21

11:30 a.m.— Watford City Chamber of Commerce, Lunch & Learn for lodging providers and purchasers at Outlaws Bar & Grill. RSVP to Laura at 701-570-5084.

1:30 p.m.-3 p.m.— Watford City Chamber of Commerce, Lunch & Learn, North Dakota Sales & Use Tax at Outlaws Bar & Grill. RSVP to Laura at 701-570-5084.

OTHER SURROUNDING COUNTIES

Tues., May 21

7 p.m.— NEMLMOA Meeting at the Community Center in Froid, MT.

View all monthly events on our calendar at www.roundupweb.com.



1212 W. 2nd St, Williston
WWW.DRIVERYAN.COM

2013 Dodge Grand Caravan SE



#19343

\$19,343



701-577-1111

Price includes all rebates. Customer must qualify for all rebates. See Dealer for details.

7th Annual Early Bird Golf Scramble Set to Tee Off This Weekend

Submitted by Mike Mohl

The 7th Annual Early Bird Golf Scramble is off and running even before the date of the event. This year it is set for May 18th at the Sidney Country Club. Already many area businesses and individuals have committed to making a difference in our communities by golfing for the Sunrise Women's Clinic. The Early Bird Golf Scramble has come to be known as a first class tournament that makes a difference in our world and this year is no exception. Sunrise Women's Clinic is a nonprofit medical clinic offering early pregnancy confirmation and options education to clients in the MonDak region.

This year features the Cenex Farmer's Elevator Chip Shot Contest. The grand prize is a Sony Bravia 42" LCD Flat Screen TV valued at \$650. Corporate Cup participants will be given a complimentary attempt to chip a ball into a designated floating landing area on one of the SCC Course ponds to move on to the next round of the chip-off. Those participants not on a Corporate Cup team can purchase two attempts for \$15 or 4 attempts for \$20. Additional attempts for

Corporate Cup participants can be purchased as well. The chip-off to determine the winner will be conducted following the Mitchell Oil Field Services Award Dinner.

The Corporate Cup continues to be a huge success. The Corporate Cup is a scramble within the scramble. Corporate Sponsors that donate at least \$500 receive a 4 person team into the Corporate Cup. This year the following businesses have already joined in the Corporate Cup action: Mitchell's Oil Field Services, Cenex Farmer's Elevator, B&B Builders, Faith Alliance Church, Jones Construction, Sidney Abstract, Ameriprise Financial, Corland Construction, Border Steel, Custom Fence, Farm Bureau Financial Services, Pro Tire, R&J Oilfield Service, Red Fab Inc, Richland Pump & Supply, Sidney Assembly of God Church and Sidney Health Center.

The Mitchell's Oil Field Services Awards Dinner will immediately follow play. Participants will receive commemorative drinking glasses and a great meal. Awards will be handed out for the various hole prize competitions that will be held on each hole. The Scramble champions and randomly drawn 2nd and 3rd place teams will be awarded. The Corporate Cup

champions will also be revealed. Participants must be present to win the hole prizes.

This year participants in the Scramble will be golfing to support the Sunrise Women's Clinic. Sunrise provides early pregnancy verification with ultrasound performed by a trained Nurse Sonographer. Often the pregnancy is unplanned and the woman is not sure of her options. A caring Client Advocate listens to her concerns and questions, providing education on fetal development, pregnancy, parenting, adoption and abortion. Clients are encouraged to use a Decision Guide to weigh the pros and cons of each choice that is being considered and to identify the short and long term impacts of each option.

Under the direction of their Medical Director Dr. George Scordalakes, the Nurses make referrals for prenatal appointments and provide prenatal vitamins. Clients can earn a free baby Starter Kit and car seat by meeting with a volunteer Client Advocate for pregnancy or parenting education, as well as shop in the Baby Boutique for new or like-new baby clothes, blankets and diapers.

Averaging 6 appointments each week, over half the clients are seen for pregnancy tests, ultrasounds and options education. Sunrise Women's Clinic is a 501(c)(3) Christian organization. They are pro-life and do not provide nor refer for abortion.

To register, simply pick up a brochure at the Sidney Country Club or call the tournament chairperson, Sean Dodds at 406-489-1497.

MDT Proposes a Resurfacing Project for Montana Route 16 in Sidney-Richland Co.

Submitted by Lori Ryan

The Montana Department of Transportation (MDT) would like to notify the public and seek comments on a proposal to resurface about 1.4 miles of Holly Street, Highway 16 in Sidney. The project begins at the intersection with Central Avenue N., at reference marker 38.1 and extends west for approximately 1.4 miles ending at the intersection with 22nd Street N.W. and Airport Road (at reference marker 36.7).

Proposed work includes milling the existing surface, applying new overlay and finishing with a seal & cover (chip seal), upgraded pavement markings, signage, ADA upgrades and bridge deck treatment.

The project is tentatively scheduled for construction in the summer of 2015, or sooner, depending on completion of all project activities and availability of funding. No new Right-of-Way or utility relocations will be needed.

For more information, please contact Glendive District Administrator Shane Mintz at 406-345-8212 or Project De-

sign Engineer Jim Frank at 406-345-8214. For the hearing impaired, the TTY number is 406-444-7696 or 1-800-335-7592, or call the Montana Relay at 711. Members of the public may submit written comments to the Montana Department of Transportation Glendive office at P.O. Box 890, Glendive, MT 59930-0890, or online at www.mdt.mt.gov/mdt/comment_form.shtml.

Please note that your comments are for project CN 7946000. Alternative accessible formats of this information will be provided upon request.

Williston Saddlery

BIG SADDLE SALE

May 9 - 24

- Barrel Racing
- Roping • Ranch
- Trail Ride

Sale Prices on Quality Brand Saddles

10% OFF ALL TACK

LET'S RIDE!

5 Miles West on Highway 2
14096 West Front Street • Williston, ND

701-572-2267





COOKS ON MAIN

for the everyday chef

Wusthof Skills Course

- Friday, May 31 at 6pm CT
- Cost is \$45⁰⁰ per person
- Space is Very Limited

Call To Reserve Your Spot Today!



Open Mon - Sat: 9am - 6pm
224 Main Street • Williston, ND
701-572-COOK (2665) • (F) 701-572-2666



JOIN OUR
BIRTHDAY CLUB

...and get your Annual Health Screen
for a reduced rate during
your birthday month.

**Join Sidney Health Center's
Birthday Club**

Sign-up at the Sidney Health Center admission desk anytime during the month of May to have your blood tested for a reduced fee of \$35 (plus \$28 for a P.S.A. test) during your birthday month!

If you are already receiving a Birthday Club postcard, you do not need to sign up again.



SIDNEY HEALTH CENTER
Exceptional Care for Life

216 14th Ave SW • Sidney, MT
Phone: (406) 488-2100
www.sidneyhealth.org



BINGO

Billiards & Darts

Locally Owned & Operated by the Joseph Family

20%
off

Bingo Daubers
Pool Cues, Table Parts & Accessories
Darts & Accessories
Games • Playing Cards
Poker Chips

Selling Used:

Pool Tables
Juke Boxes
Dart Boards



203-05 Main Street, Lower Level, Williston
572-6254 or 1-800-732-0962 • Open Tues - Sat 1 pm - 5 pm



J&S FEEDS

1000 N. MERRILL • GLENDIVE

Happy Spring!



COME IN FOR
ALL YOUR
BRANDING NEEDS.
CALL AHEAD, WE
CAN HAVE IT READY!

Fly Mineral Is In

- Purina • Vaccines
- Crystalyx •Linn Panels
- Horse Tack
- QLF(Quality Liquid Feed)
- Animal Health
- Western Accessories
- Montana Silversmith

Most things can
be sent overnight!

(406) 377-2180
Mon-Fri: 8 - 5 • Sat: 8 - 12
“Animals Make Better People, Purina Makes Better Animals”

New Irrigation District Law Passes/ Lower Yellowstone Irrigation Project Supported Legislation

Submitted by Ric Holden

As a sign of large bi-partisan support between Democrats and Republicans, the Montana legislature has endorsed Senate Bill 252, sponsored by Senator Matt Rosendale, R-Glendive. Montana Governor Steve Bullock has now added his support for the bill by allowing the bill to become law this week. Earlier in the session the State Senate approved the bill 45 to 2 and a few weeks later the house added their approval with a final vote tally of 74 to 21.

The Rosendale bill addressed three main points important to irrigation election law. First, the new law recognizes that everyone who owns and is taxed on irrigated land deserves the right to vote on water taxes. Secondly, the bill now gives landowners one vote for each acre of irrigated land that they own. This includes small landowners that pay water taxes in housing districts located within the irrigation district boundaries. Lastly, the voting procedure has been clarified and easy to understand, doing away with the complicated proportional voting rules that had been in statute for many years.

Former State Senator and current Farm Bureau member, Ric Holden, linked up with Senator Matt Rosendale to draft the new law. Holden said, “Senator Rosendale was very good to work with, he listened to the irrigation districts’ concerns and then took action to move the proposed bill forward.” Holden noted that he provided the Senator with a proposed plan in writing, that could serve as a working blueprint for the legislation, that included projected costs, bill language and support for the legislation from around the state.

Senate Bill 252 received a wide range of support from the County Clerk & Records Association, Montana agriculture groups as well as several irrigation districts state wide. At the hearing in Helena, the County Clerk & Records Association stated that “we love this bill” based on the clarity the bill provides to local county election officials in implementing the law. Irrigation election law procedures have been difficult to administer as urban sprawl moved housing development out into the farming areas of Montana.

Based on the statewide support for the bill in the committee hearings Holden said, “Senator Rosendale has been a real friend to irrigation projects across the state.”

Family Fun at the MonDak Heritage Center

The MonDak Heritage Center is hosting its second Family Fun Day on Saturday, May 18 from 1 to 4 p.m. Jenny Baker, outreach coordinator, is excited about the event. “We had over 160 people last time and had such a great time that we wanted to do it again,” she said. The 18th is Armed Forces Day and that will be the theme of the day. Operation Gratitude will encourage children to color a picture or write a letter which will then be sent by Baker to members of the Armed Forces who are deployed. There will also be four art stations set up with different activities plus fun activities downstairs, including a scavenger hunt. “The kids love the scavenger hunt, and they see so much more when they are actually looking for things,” Baker stated. There will also be a story hour, snacks and lots of fun. The entire event is free.

Volunteers are still needed that day. If you can spare a few hours to soak up the joy and excitement of a bunch of children, please call the Heritage Center at 433-3500.

9th Annual Children’s Fishing Derby

The 9th Annual Children's Fishing Derby will be held Saturday, June 8, 2013, at the Watford City Fishing Pond and Nature Park; 9 a.m. to 11:30 a.m. All children ages 12 & under and their families are welcome to attend. The derby is free of charge and includes lunch to be served around 11 a.m. Each child will also receive a participation prize. For more information, call Sharon Prestangen at 701-842-2393.

**Don’t get
nickle & dimed
for your
online news &
classifieds**

**Roundup
WEB.COM**

CROWN TREE HOMES LLC

MODULAR & MANUFACTURED HOMES

Licensed General Contractor - Excavation to Completion





Add Garage
or Basement to
any Home

SPECIAL PRICE

\$168,900

1,508 Sq. Ft. - 3 Bedroom, 2 Bath

- ✓ Includes Unit
- ✓ Includes Full Concrete Basement
- ✓ Includes Excavation, Digout & Back Fill
- ✓ Includes Set & Finish
- ✓ Includes Delivery
- ✓ Includes Basement Stairs

Excavation to Completion Home Plans

Building
Complete Homes
from Excavation
to Finish

▪ **SAVE** ▪

Let us do all the work from
Excavation to Completion.
We will bid your favorite
plan with no cost to you!

MODEL HOME OPEN HOUSE
SAT, MAY 18TH & SUN, MAY 19TH
12:00 pm - 4:00 pm

Williston

Hwy. 1804

Go East of Williston on
1804 to 133rd Ave NW,
turn South.

★ 5040 133rd Ave NW
Williston, ND

SPECIAL PRICE

\$184,900

2,027 Sq. Ft. - 4 Bedroom, 2½ Bath

- ✓ Includes Unit
- ✓ Includes Full Concrete Basement
- ✓ Includes Excavation, Digout & Back Fill
- ✓ Includes Set & Finish
- ✓ Includes Delivery
- ✓ Includes Basement Stairs

Excavation to Completion Home Plans

nsieler@gmail.com

402-429-0620

Sidney’s Town Clean Up Week Scheduled for May 19-25

Submitted by Cami Skinner

The City of Sidney and Sidney Area Chamber of Commerce and Agriculture are partnering to host Clean Sweep, a week dedicated to cleaning up and beautifying the Sunrise City.

Businesses, families, individuals, groups and organizations are encouraged to set aside time the week of May 19-25 to help spruce up Sidney. Large trash bags, donated by the City of Sidney, are available at the Chamber or City Hall for those assisting in the cleanup effort.

As an added incentive to families, the City of Sidney is donating a Family Swimming Pass to the Sidney Pool. In order to be eligible for the contest, families must post a photo to the Chamber’s Facebook page showing their family cleaning up. At the conclusion of the week, a drawing for the pool pass will be conducted.

“We encourage people to take pride in our community and participate in the clean up efforts. Sidney has always been known for being a well-kept community, and with a summer full of events and activities, we want to make sure Sidney looks bright and beautiful to our visitors,” commented Wade VanEvery, Chamber Executive Director.

For suggested sites to clean or for further information, please contact the Sidney Area Chamber of Commerce and Agriculture at 406-433-1916 or City Hall at 406-433-2809.

Watford City Chamber of Commerce Presents: Lunch & Learn, North Dakota Lodging Sales & Use Tax

This luncheon for lodging providers and purchasers will be held Tuesday, May 21 at 11:30 a.m. at the Outlaws Bar & Grill Banquet Room in Watford City, North Dakota. Topics being covered are Types of Lodging Facilities, Taxability and Construction and Setup Issues. Lunch is \$12. Please R.S.V.P. to Laura at 701-570-5084 by Monday, May 20.

Millers’ Corner
Convenience Store, Deli & Catering

We Cater
to your suitable location

**Breakfast
Brunch | Lunch
Dinner**

Family Gatherings

Reunions

Weddings

Business Meetings

Conferences

Holiday Parties

406-433-4041
2201 West Holly, Sidney

Fill the Truck May 21

Four local agencies have teamed up to conduct a “Fill the Truck” event Tuesday, May 21 in the Reese & Ray’s IGA parking lot and Wednesday, May 22 at the Reynolds/Shopko parking lot from 11 a.m. to 6 p.m. each day. The Richland County Food Bank, the Salvation Army, ROI, Inc. and Richland County Coalition Against Domestic Violence are all experiencing increased demands on their services due

to the growth in our community. Each organization has provided an essential items list. These are items they could and do use on a daily basis. Pick up a list from the volunteers at the big yellow truck and help “Fill The Truck”.

Sidney Salvation Army
Kitchen items such as dishes, silverware, pots and pans.
Disposable diapers
Gas Cards

ROI, Inc.
Canned goods
Boxed goods such as cereal and mac & cheese
Seasoning packets
Cleaning supplies
Baking supplies
Gas Cards
Richland County Coalition Against Domestic Violence
Food items
Personal care items
Linens
Night Clothing
Pre-paid cell phones and minutes
Pots and pans
Paper and cleaning products

Richland County Food Bank
Canned (15oz) fruit, vegetables, beans, spaghetti
Tuna
Pasta and rice (1#pack-ages)
Dry laundry soap
Shampoo
Each entity appreciates the support shown by the community. “We are very blessed by the support of the community. They’ve been very good to us and we are not ungrateful,” Candy Markwald of the Richland County Food Bank stated. All the agencies just need a little more help.

Sidney Public Schools Activities Program

The Sidney Public Schools would like to invite all interested community members, parents and guardians of all current and future Sidney Public Schools athletes to an open forum meeting at the Sidney High School Gymnasium on Tuesday, May 21st. Topics will include:

Summer Schedule for 2013 with weight rooms, open gyms and camp dates; High School and Middle School Schedules for 2013-2014; Sidney Public Schools program changes and expectations for the 2013-2014 season(s); Community/parent/guardian/participant input into the Sidney Public Schools Programs.

Coaches from the Sidney Public Schools Programs will be available before and after the meeting. This meeting is being held to help the community become aware of what opportunities are being offered by the Sidney Public Schools to increase the competitiveness of our athletic teams, and to allow the community to offer comment on their expectations for our programs.

Any questions or concerns, please contact the Sidney High School Activities Office at 406-433-2330.

Welcome Home Party for the 818th EN CO SAPPER

Please join the Williston Area Chamber of Commerce Military Affairs Committee in welcoming our soldiers of the 818 EN CO SAPPER home on Saturday, May 18, 2013 at the Raymond Family Community Center. Cost is \$10 for Adults & Teens (13+); Children under 12 and Veterans are FREE. Dinner is at 5:30 p.m. with a program at 7:30 p.m.; Beer Garden opens at 8:30 p.m. – ID required. Kid Rocked Performance at 8:30 p.m.; Hells Bells Performance at 10:30 p.m. Tickets are available for purchase at Economart, the Chamber Office (10 Main St.) & at the door.

Phone and Internet Discounts Available to CenturyLink Customers

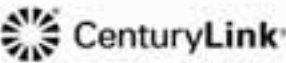
The Montana Public Service Commission designated CenturyLink as an Eligible Telecommunications Carrier within its service area for universal service purposes. CenturyLink’s basic local service rates for residential voice lines are \$14.73 per month and business services are \$30.00 per month. Specific rates will be provided upon request.

CenturyLink participates in a government benefit program (Lifeline) to make residential telephone service more affordable to eligible low-income individuals and families. Eligible customers are those that meet eligibility standards as defined by the FCC and state commissions. Residents who live on federally recognized Tribal Lands may qualify for additional Tribal benefits if they participate in certain additional federal eligibility programs. The Lifeline discount is available for only one telephone per household, which can be either a wireline or wireless telephone. A household is defined for the purposes of the Lifeline program as any individual or group of individuals who live together at the same address and share income and expenses. Lifeline service is not transferable, and only eligible consumers may enroll in the program. Consumers who willfully make false statements in order to obtain Lifeline telephone service can be punished by fine or imprisonment and can be barred from the program.

Lifeline eligible subscribers may also qualify for reliable home high-speed Internet service up to 1.5Mbps for \$9.95* per month for the first 12 months of service. Further details are available at centurylink.com/internetbasics.

If you live in a CenturyLink service area, please call 1-855-954-6546 or visit centurylink.com/lifeline with questions or to request an application for the Lifeline program.

***CenturyLink Internet Basics Program** – Residential customers only who qualify based on meeting income level or program participation eligibility requirements, and requires remaining eligible for the entire offer period. First bill will include charges for the first full month of service billed in advance, prorated charges for service from the date of installation to bill date, and one-time charges and fees described above. Qualifying customers may keep this program for a maximum of 60 months after service activation provided customer still qualifies during that time. Listed High-Speed Internet rate of \$9.95/mo. applies for first 12 months of service (after which the rate reverts to \$14.95/mo. for the next 48 months of service), and requires a 12-month term agreement. Customer must either lease a modem/router from CenturyLink for an additional monthly charge or independently purchase a modem/router, and a one-time High-Speed Internet activation fee applies. A one-time professional installation charge (if selected by customer) and a one-time shipping and handling fee applies to customer’s modem/router. **General** – Services not available everywhere. CenturyLink may change or cancel services or substitute similar services at its sole discretion without notice. Offer, plans, and stated rates are subject to change and may vary by service area. Deposit may be required. Additional restrictions apply. **Terms and Conditions** – All products and services listed are governed by tariffs, terms of service, or terms and conditions posted at centurylink.com. **Taxes, Fees, and Surcharges** – Applicable taxes, fees, and surcharges include a carrier Universal Service charge, carrier cost recovery surcharges, state and local fees that vary by area and certain in-state surcharges. Cost recovery fees are not taxes or government-required charges for use. Taxes, fees, and surcharges apply based on standard monthly, not promotional, rates.



Just Arrived
TUSCANY **FTX**
In “Green Gem”



**Black Ops
Also In Stock**

**Talk to Peggy, Jackson
or Keith To Schedule
Your Test Drive!**

Available Now!

2013 F150 Lariat FTX by *TUSCANY*
Factory Demo, 3,000 miles
Save \$1000's



Mon. - Fri. 8 a.m. - 5 p.m.
Sat. 9 a.m. - 1 p.m.

215 East Main • Sidney, MT
433-1810 or 1-800-482-1810

HURLEY'S

OILFIELD SERVICES

- Potable Water • Sewer System
- Loaders • Communications
- Backhoe • Trucking
- Skid Houses • Porta Potties

406-742-5312
Fairview, MT



Oil Field Roads & Locations

- Reclaim Work
- Gravel & Scoria Hauling

Fairview, MT
406-742-5549

LONG X BOTTLE SHOP



In-store specials every week.

Check out our hard ice cream!

8 a.m.-9 p.m.
Mon.-Sat.
1-5 p.m. Sun.

Hwy. 85, Watford City
701-444-3335
(Located in Long X Visitors Center)

Sports Booster

WEEKLY SCHEDULE

Track

Wednesday, May 15
R&L HS at Sidney

Saturday, May 18
Sidney at Laurel, East A Divisional,
9 am
Watford City at Northwest Region in
Watford

Baseball

Thursday, May 16
Tournament Play-in Games in
Watford City

Mon & Tues, May 20 & 21
Region Tournament in Watford
City

Softball

Fri & Sat, May 17 & 18
Sidney at Laurel
Watford City at Bottineau Region
Tournament



Casino & Lounge

Behind The Lone Tree Inn In Sidney

Happy Hours 4-6 Weekdays
50¢ Off All Drinks



Family Dining

Fairview
406-742-5180

Open at 4:30 p.m. Tues.-Fri.
2 p.m. Sat. & Sun.




Farmers Union
Oil Co.
101 S Main • Watford City
701-444-3639



Smarter. Better. Faster.

www.RTC.coop

VOICE • DATA • VIDEO

Thrivent Financial Moves Up Seven Spots to 325 on FORTUNE 500 List

Submitted by Kristin Weltikol

For the 19th consecutive year, Thrivent Financial for Lutherans was again named to FORTUNE magazine's FORTUNE 500 list. The organization now occupies the 325 spot on the annual ranking. The organization climbed seven spots from last year's position of 332, based on annual revenues, to become the 325th largest company in the United States. The ranking was based on Thrivent Financial's 2012 revenue of \$8 billion. In addition, FORTUNE magazine listed Thrivent Financial as the sixth largest mutual life/health insurance organization in the United States and the 17th largest company headquartered in Minnesota.

"Our FORTUNE 500 ranking is just one sign of our ongoing strength and stability," said Randy Boushek, chief financial officer of Thrivent Financial. "It is an affirmation of our commitment to success and the value we are able to provide our members."

Thrivent Financial is represented in the local area by Harvey Senn at 1050 S. Central Ave., Sidney, MT Phone Number 406-433-6143. And Ron Gebhardt at 1050 S. Central Ave., Sidney, MT 406-433-5287.

About Thrivent Financial for Lutherans

Thrivent Financial for Lutherans is a faith-based, Fortune 500 financial services membership organization helping its nearly 2.5 million members to be wise with money and to live generous lives. Thrivent Financial and its affiliates offer a broad range of financial prod-

ucts and services. As a not-for-profit organization, Thrivent Financial joins with its members to create and support national outreach programs and activities that help congregations, schools, charitable organizations and individuals in need. For more information, visit Thrivent.com. Also, you can find us on Facebook and Twitter.

Insurance products issued or offered by Thrivent Financial for Lutherans, Appleton, WI. Not all products are available in all states. Securities and investment

advisory services are offered through Thrivent Investment Management Inc., 625 Fourth Ave. S., Minneapolis, MN 55415, 800-847-4836, a FINRA and SIPC member and a wholly owned subsidiary of Thrivent Financial for Lutherans. Thrivent Financial representatives are registered representatives of Thrivent Investment Management Inc. They are also licensed insurance agents/producers of Thrivent Financial. For additional important disclosure information, please visit Thrivent.com/disclosures.

Camping Restrictions on Some WMAs

Submitted by North Dakota Game & Fish Department

The North Dakota Game & Fish Department will continue to implement camping restrictions established last year on some wildlife management areas in western North Dakota along Lake Sakakawea.

Effective immediately, overnight camping is prohibited on the following WMAs: Antelope Creek, Lewis & Clark, Big Oxbow, Ochs Point, Neu's Point, Overlook, Sullivan and Tobacco Garden in McKenzie County; Van Hook in Mountrail County; Hofflund and Trenton in Williams County.

In addition, the following WMAs are closed to camping on Tuesdays and Wednesdays, but open to camping Thursday-Monday: North Lemmon Lake in Adams County; Bull Creek in Billings County; Alkali Creek and Spring Creek in Bowman County; Smishek Lake and Short Creek Dam in Burke County; Harris M. Baukol in Divide County; Killdeer Mountains in Dunn County; Camels Hump Lake in Golden Valley County; Indian Creek in Hettinger County; Audubon, Custer Mine, Deepwater Creek, deTrobriand, Douglas Creek, and Wolf Creek in McLean County; Beaver Creek and Hille in Mercer County; Storm Creek in Morton County; Cedar Lake and Speck Davis Pond in Slope County; and McGregor Dam in Williams County.

On those WMAs where camping is allowed Thursday through Monday, all equipment must be removed on Tuesday and Wednesdays when camping is not allowed.

The rules ensure these areas are available for hunters and anglers. Camping restrictions at all WMAs are posted at entry points.

RoundupWEB.COM

THE BUSINESS ROUNDUP
 REACH **26,500** READERS IN THE ENTIRE MONDAK REGION
406-433-3306 OR **800-749-3306** ~ **INFO@ROUNDUPWEB.COM**
 GO TO WWW.ROUNDUPWEB/DIRECTORY FOR DIRECT LINKS TO COMPANY WEBSITES & LOCATIONS **\$25⁰⁰/WK**

NICK JONES
REAL ESTATE

REALTOR®


TRUCK ROUTE SOUTH, SIDNEY
OR CONTACT ONE OF OUR AGENTS:

NICHOLAS J. JONES • DENNIS WICK • JUSTIN JONES • JERRIAN FRANZEN • KRISTIN LARSON
BROKER 408-480-1330 408-480-9525 408-478-3773 408-480-5139
408-480-1544 RMC 798-3115

www.NickJonesRE.com

Beagle
PROPERTIES INC.

View all our listings at
www.beagleproperties.com

 **DOORBUST'N**
Portables & Septic Service, LLC
Blaine Rogers, Owner

PG Box 1803
Sidney, NY 13827

Office: (406) 433-7586
Fax: (406) 433-7586
Service: (406) 489-0915

www.doorbustnportablessepticsservice.com



MD
HOSE & FITTING

Hours: 7 a.m. - 5 p.m. Mon. - Fri.
205 10th Ave. S. E. Sidney • Sidney Red-E-Mix West Building
P: (406) 433-1590 • After Hours: (406) 478-3116
mdhose@midrivers.com

 **SONDA'S**
solutions

Specializing in FR Clothing

OFFICE: 406-433-6757 • CELL: 406-697-7153
2221 S. CENTRAL AVENUE • SIDNEY, MT 59270
FAX: 406-433-6755 • WEBSITE:
WWW.SONDASSOLUTIONS.COM

RV Depot

RV Parts & Mobile RV Repair
including in stock

• water heaters • furnaces • air conditioners • special orders available

Mon-Sat: Check for hours.

701-842-2306 • 305 S. Main • Watford City, ND

 **AGRI**
INDUSTRIES
Water Professionals
Underground Contractors

1-877-488-8066
Office: 406-488-8066
Fax: 406-488-8067

Bill Borchert & Lane Boyce
Licensed Water Well Drillers
email: bill@agriindustries.com

1775 S. Central Ave.
Sidney, MT 59270
www.agriindustries.com

Customer Service is Our #1 Priority

***Farm & Ranch Products &
Construction Materials. New
Steel, Auminum & Stainless.***

Brady Smelser • Tim Mulholland • Kelly Moody • Bret Smelser • Ernie Gawryluk

| | | | |
|-----------------------|-----------------------|-----------------------|---------------------|
| Sidney | Glendive | Williston | Plentywood |
| 35002 CR 123 | 2703 W. Towne St. | 13896 W. Front St. | Hwy 16 East |
| 406-433-7737 | 1-800-423-5219 | 1-800-820-5493 | 406-765-2624 |
| 1-855-810-2995 | | | |

Injury Prevention Team & Blue Rock Distribute “Thumb Rings”

Submitted by Richland County Injury Prevention Team

The Richland County Injury Prevention Team was supported by Blue Rock Companies this spring in conjunction with their 100 year celebration and their efforts in bringing awareness to the dangers of Texting & Driving. Blue Rock Companies purchased “thumb rings” for every high school student in Richland County. The Richland County Injury Prevention Team developed a “visor card” to attach the “thumb rings” that provided alternatives to texting while driving and a “Teen Driver Brochure”.

Park your phone, drive your car; find your app, these apps prevent use of cell phones while driving; designate a texter, let a passenger do your texting while you do the driving.

Did you know: The choice to use a cell phone while driving, even hands-free, is estimated in several studies to increase your chance of a crash by 400-500 percent? When you take 5 seconds to respond to a text at 55 mph you just took your eyes off the road and covered 100 yards? Motor vehicle crashes are the #1 killer of 16-20 year olds?

Buckle up & Phone down
Mary Friesz, Injury Prevention Specialist did a short presentation and distributed the items at the Fairview High School to the freshman and sophomores. The administration distributed them to the junior & seniors. Kathy Helmuth, RCHD and a member of the Injury Prevention Team & Suzanne Wright,

RCHD did a presentation at the Lambert High School to both Jr. High & High Schools Students and their parents. The Student Council at Sidney High School was presented with the items and they brought awareness through their daily announcements and handing the items out to all high school students. Savage High School was presented with the items and distributed them.

Thank you to Blue Rock Companies and our local high schools for bringing awareness and education to our community and making it a safer place for all of us.

The Richland County Injury Prevention Team will continue to work at bringing awareness and education to the public on the dangers of Distracted Driving through articles, their webpage on the new Richland County website and on the RCHD Facebook page. The team is also available for safety meetings and other group meetings and have presentations prepared for, Safe Driving, Winter Driving, DUI Awareness & Personal Safety Awareness... but are also flexible to your needs and the needs of the community.

Watch for more information on their upcoming quarterly meeting in July. The team will be showing “Cops n Docs”, the documentary the DUI Task Force developed and aired over MidRivers in March. They will also be presenting “Certificates of Appreciation” to those who showed support this past year. The team will also share this years Fiscal End of Year Report and the upcoming

Fiscal Year's Work Plan. If you are interested in making a difference in your community please contact Mary Friesz,

Injury Prevention Specialist at the Richland County Health Department, 406-433-2207.

FWP Offers Program Related to CRP Enrollment

Submitted by MT FWP

Sign up time is here for the popular Open Fields for Game Bird Hunters program.

Open Fields for Game Bird Hunters is a voluntary program that pays landowners an add-on payment for lands enrolled in the federal Conservation Reserve Program. Open Fields is aimed at conserving Montana's productive game bird habitats enrolled in CRP—and at providing additional public hunting access for upland game bird hunting.

Counties eligible for program participation are: Cascade, Chouteau, Daniels, Dawson, Fallon, Fergus, Glacier, McCone, Pondera, Prairie, Richland, Roosevelt, Sheridan, Teton, Toole, Valley, and Wibaux. The program is available for new or existing CRP-enrolled lands that have a minimum of three years left on the contract.

Watford City Pick Up the Patch June 1

Pick up the Patch is a community-wide effort to clean up debris left behind once the winter snow melts in the Watford City and surrounding areas. It's a great opportunity for people and businesses to come together and show their community support and a great opportunity to meet your neighbors.

This year's 'Pick up the Patch' will begin on Saturday, June 1st and continue throughout the week to enable those people or businesses that are unable to help on a weekend but are willing to help, do so.

The Civic Center in Watford City will be the check in spot on Saturday morning. Here you will be able to obtain supplies such as: water, maps, gloves, garbage bags and a vest. It'll also be a great place to meet with your team and coordinate your efforts. Families with children are welcome to help out but will be assigned to the parks, walking paths, schools, fishing ponds, etc.

Lunch will be provided to all volunteers on Saturday from 12:30 – 2:00pm and dinner from 4:00pm – 6:00pm.

If you are interested in helping 'Pick up the Patch' please contact Laura Sanford at 701-570-5084 or Justin Smith at 701-570-0456.



Save Time & Money With Great Communication!

Mobile Radios

- 25 to 110 watts
- 8 to 128 channels
- small, easy to use

Starting at \$359⁰⁰



Hand Helds

TK-2302
Hand Held
5 Watts w/ scan

Authorized KENWOOD Dealer

Call Larry today at...

ADVANCED COMMUNICATIONS

Just North of McDonald's • Sidney, MT
406-433-1659 or Toll Free 1-866-433-1659

May Is Beef Month


Register At These Businesses Through May 31 to Win 1 of 2 \$50 Beef Bundles



- *Finnicums Furniture*
- *The Other Place, Culbertson*
- *Electricland*
- *Harmon's Agates*
- *Reynolds*
- *Reese & Ray's IGA*
- *Lower Yellowstone REA*
- *Johnson Hardware & Furniture*
- *Richland Farm Mutual*


Real Estate & Moving Auction

Saturday, May 25 • 10am



From Sidney, MT - Take Highway 16S from the Caution Light toward Glendive for 3.5 miles. (Located on the west side of the Highway)

Section 25, Township 22N, Range 58E, LOT 2B Fox Creek Estate. 2.26 +/- Acres, 1680 sq ft house, 3 bed, 2 bath (1 with jet tub), 3 bed downstairs, 1 bath, family room, game room & laundry room, attached garage with insulated automatic overhead doors, 24x36 shop/garage with insulated walls & automatic overhead door



RK Rick Knipkamp Statewide Auction
Circle, Montana (406) 485-2548
WE SELL & ADVERTISE ACROSS THE UNITED STATES
www.rkauction.com
Rick Knipkamp (406) 485-2548 or cell (406) 939-1632

MSU-EARC Excess Property For Sale

IHC-403 Combine
Allis Chalmers D12 with Sickle Mower
IHC Cub Loboy Tractor
BST Plug Transplanter – Model BTS-6 603
1986 Chevrolet 1T Dually – 103,000 mi.
Lockwood 6030-4500 Potato Harvester
JD 3 Bottom Spinner plow
JD 4 Bottom Spinner plow
Alloway Beet Defoliator – 6 row, 2 drum
1990 Chevrolet Scottsdale Suburban – 202,800 mi.
For more information and to submit an offer, please contact:

MSU-Eastern Ag Research Center
1501 N Central Ave
Sidney, MT 59270
406-433-2208
406-433-7336 Fax



MONTANA STATE UNIVERSITY
MONTANA AGRICULTURAL EXPERIMENT STATION
Eastern Ag Research Center

203 2nd St. NW • Sidney
406-482-3737

**425 E. Main St.
Sidney, MT
(406) 433-5617**

900 1/2 South Central • Sidney, MT
Behind The Lone Tree Inn • 433-3245

2429 W. Holly St.
406-488-4400

501 9th Ave NE, Sidney
406-433-3403

• WE DELIVER •

123 N. Central Ave.
Sidney, MT 59270
(406) 433-3920
1-800-769-1040
www.northwestfcs.com

809 EAST MAIN
SIDNEY, MT
406-433-3400

Sidney Sugars
INCORPORATED
Sidney Montana

756 10th Ave SE
406-482-5251

**Heating • Refrigeration
Air Conditioning**
Sales/Service/Installation
Sidney, MT
406-488-4657

315 Second St. NW
Sidney, MT 59270
406-488-2805
email: ffh@fulkersons.com
www.fulkersons.com

215 East. Main St. • Sidney
1(800)482-1810 • 433-1810

Sidney, MT
406-433-1983

406-433-3025


Reinke
 MORE RIGHT THAN RAIN

PO Box 375 • Sidney, MT
482-4027

High School Students To Be Recognized At Academic Social

By Emily Schaff

Two separate events will take place to honor and recognize Sidney High School students for their educational efforts during the Academic Honors Social.

Freshman through seniors who maintained a 3.5 GPA for three straight quarters will be recognized as a Lion Academic Scholar by the Sidney Lions Club. Students who are Lions Scholars have received an invitation to attend so they can be recognized for their tremendous accomplishment. They will receive an award from the Lions Club, but don't have to worry about being inducted.

Current sophomores and juniors who have filled out the Student Activity Information form and have been selected by the National Honor Society Advisory Council will be inducted into NHS during a ceremony following the Lions Scholar recognition. These sophomore and junior students were eligible to apply to become a member of NHS and turned in their information forms to be considered. The students selected have been notified and will be inducted during the social. Brief presentations by NHS officers and out-going seniors will take place prior to the induction ceremonies. NHS induction practice for current and incoming members is scheduled to take place in the Sidney High School multipurpose room Wednesday, May 15 at 7:30 a.m.

The social is to take place Thursday, May 16 at 7 p.m. in the multipurpose room. The entrance is located on the east side of the gym where the double doors are located. All those invited for both events are encouraged to attend. Pie and ice cream will be served.



Sidney Public Schools Baby Boom

Whether there is something in the water at all the Sidney Public Schools or not, these Sidney School staff members are insuring their jobs for the future. Pictured here are all the staff members who had a baby within this school year.

Left to Right are Liz Kleinke, High School Business Teacher, with her son Toby Robert who was born September 21, 2012; Melissa DeBruycker, High School Special Education Teacher, with her daughter Natalie Rose who was born January 19, 2013; Stacey Collins, High School counselor, with her son Aiden Leo who was born January 31, 2013; Sara Romo, 2nd Grade Teacher, with her daughter Lauryn Lyn who was born February 11, 2013; Beth Thompson, 2nd Grade Teacher, with her son Marshal Lewis who was born February 28th, 2013; Nicole Simonsen, 1st Grade Teacher, with her son Jorgen Michael who was born March 16, 2013; Katrina Johnson, Kin. & 5th Grade Special Education Teacher, with her son Kamden Ray who was born March 21, 2013; Shay Witt, High School Special Education Paraprofessional, with her daughter Hadley Rebecca who was born April 9, 2013; Teresa Stedman, High School Attendance Clerk, with her daughter Bryndi Laine who was born April 15, 2013. Not pictured is Sylvia Basnaw, West Side Special Education Paraprofessional, whose daughter Samantha Rose was born March 20, 2013.



Switch today!

Business Checking MADE SIMPLE...

| | |
|---|--|
|  Essential Business Checking | No minimum balance No service charge 1,000 FREE items per statement cycle* |
|  Business Investment Checking | Earn interest Minimum balance required 1,000 FREE items per statement cycle* |

Plus, these **CONVENIENT** services:
eBiz/eBank, eStatements, eMobile, Sweeps,
VISA® business check card, VISA® business credit card,
24-hour TeleBank, Advantage Plus**

Sidney, Montana: 433-8600



Stockman Bank
MONTANA BANKING. PURE & SIMPLE.™
WWW.STOCKMANBANK.COM

All accounts have a \$100 minimum opening deposit. *\$0.25/item if over 1,000 items.
**Advantage Plus for client's employees with direct deposit.

© 2013 Stockman Bank

Member FDIC

Join Us In Celebrating

36 Years Of Business In Sidney!

Fri & Sat, May 17 & 18



Heather & Ray

Register To Win
One Of Ten
\$36 Gift Cards

Kids
Register To Win
A Boy's or Girl's Bike

Random Prizes & Great Jackpots In The Casino

Breakfast Available
8 - 11:30am Daily
Try Our Scramblers!



Fantastic Soup & Salad Bar

Wednesday is Ladies Night
\$2⁰⁰ Off Martinis And Blender Drinks
For The Ladies From 8pm - 11pm



South 40
Restaurant, Lounge & Casino
Just a short walk from the Holiday Inn Express!
207 2nd Ave. NW • Sidney, MT
(406) 433-4999 or 433-4338



KARAOKE
Every
Wed, Fri &
Sat
At 9 pm

Fishbowl Friday!

\$1 off 5pm to Midnight



NOW OPEN

• DOT Physicals

• Sports Physicals

• Drug & Alcohol Testing

• Sports & Work Injury Treatment

FINK FAMILY

Chiropractic

Call for an appointment • 433-BACK (2225)

8 a.m. - 6 p.m. • Monday - Friday

Saturdays by Appointment Only

Michael Fink, DC

120 E. Main Street • Village Square Mall • Sidney, MT

www.finkfamilychiropractic.com

Mother’s Day Court

Right: On Mother’s Day Court Mother Cabrini #1766 Junior Catholic Daughters in Sidney hosted a Tea for their mothers and other relatives. Serving a variety of fruits, desserts, cheese and crackers along with a chocolate fountain, punch and teas, the girls entertained singing and playing piano solos. Leaders, Lynette Farr and Kathy Bidegaray have shared their love of church with the young ladies aged 6 to 18 for twenty years. The afternoon concluded with a power point presentation featuring the Juniors serving the church and community during the past year. (Photo by Janet Martineau)



With God...

ALL THINGS ARE POSSIBLE!!

Healing For:

Body and Mind

Restoration Of:

Relationships and Finances

Freedom From:

Habits and Bondages

"All Things Are Possible Ministries" is a...

Full Gospel - Spirit Filled - Word of Faith Church

Meeting in Sidney since September 2010 at 814 6th NE

(We meet in the Church of God Building)

Services: Wednesday 7:00 PM

Sunday 10:30 AM

Pastors Pat and Jan McWilliams

Phone: 406-478-9101

Website: ATAPMinistries.com



Sidney Middle School Track

The Sidney Middle School track team held a meet at home last weekend. Left: Tori Hill runs anchor in the 4x4 relay. Above: John Beyer runs his leg of the 4x1 relay. (Photos by Kari Jones)

SIDNEY HEALTH CENTER

Exceptional Care for Life

In Recognition of Hospital and Nursing Home Week

May 12-18, 2013

Our Mission is to help those we serve achieve their highest level of health and well-being.

Sidney Health Center was recently named a TOP 100 Critical Access Hospital in America by the National Rural Health Association for the second year in a row! Thanks to ALL STAFF for their contribution in helping Sidney Health Center become a top-rated facility!

A Little Bit Country Poplars Not Popular

Submitted by Warren
Frölich, NDSU Extension
Agent, Williams County

Spring is here and new homeowners are very enthused about beautifying their new home with trees, shrubs and a lawn. Developing a home landscape plan can be fun but requires a lot of hard labor and patience as plants, especially trees, grow to maturity.

When it comes to trees for new home yards and farmsteads we tend to prefer those that grow fast. Years ago, we looked to the Siberian Elm to fulfill growth expectations. Many were planted in field shelterbelts, around farmsteads and homes. It took about 20 years to realize this tree does not live very long. Although it has some drought tolerance, its life span is reduced when little moisture is received. Those who planted this tree also found it was susceptible to attacks of certain insects and very susceptible to phenoxy herbicides like 2,4-D and canker.

After we learned Siberian Elm was not the tree we thought it should be, we turned to the hybrid poplars for that fast growth. Indeed, it did grow very well for about 10 years but we learned most will be dead before they reach 20 years of age. Upon moving to our new home 20+ years ago, we had planted many northwest poplar trees, occasionally giving them supplemental water.

As the trees approached 15-20 feet their leaves began to turn color and drop prematurely. By late August many were devoid of leaves. Attempts were made to provide water but we could not keep up. Today, just a few remain but they too are struggling. By the end of the summer I expect only two of the original 24 trees will be around to experience next winter.

Besides the high water requirement, hybrid poplars are often attacked by gall mites, cytospora canker, stem decay and wetwood.

When folks ask for my thoughts or suggestions on

fast growing trees, hybrid poplars usually become part of the discussion. Obviously they are not popular with me. However, they do have a place in situations where other longer-living trees that have lower water requirements can be planted nearby and the property owner is prepared to move the declining poplars as they reach 10-20 years of age.

The Extension Service of North Dakota State University has published a neat handbook "Trees and Shrubs for Northern Great Plains Landscapes". It contains pictures, descriptions, etc. of the major species of trees and shrubs to consider for planting in the Northern Great Plains. Although, it is not intended to be an all-inclusive text, the publication includes information on 102 species plus cultivars and varieties. Hard copies can be purchased at the office now located at 302 East Broadway, known as Broadway Commons. Cost of the publication is \$10.

Be Watchful of Alfalfa

Last spring many alfalfa fields were hit hard by alfalfa weevils which severely reduce yields. No one knows if they will be a menace this year. However, we do know they actively feed when there

are 430 to 595 degree days (DD) using a base of 48°F.

With this spring being so cold, the growing degree threshold will be later than normal. It is recommended to begin looking (scouting) around 300 DD. As of May 7, the North Dakota Agriculture Weather Networks (NDAWN) calculated 62-67 DD for the Sidney/Williston area. In the Tioga region, there were only 24DD. Growing degree days are calculated by subtracting the base temperature (48°F) from the daily average of the high and low temperature. So, a day with a high temperature of 76°F and a low of 46°F would have 13 DD (76+46=122/2=61-48=13).

It will be awhile before we reach 300 DD. It is possible we could reach this level by June 1. The accumulated degree days can be monitored at the NDAWN website: <http://ndawn.ndsu.nodak.edu/index.html>. There is also a link to NDAWN on our website, go to applications, then insect degree days, then to maps. Be sure to select base temperature of 48°F. Alfalfa weevils can wipe out a field of alfalfa in just a short period. So, it is important to scout the field and be ready to apply an insecticide well before damage is seen from the road.



Catholic Daughters

In Billings at St. Bernard's May 3-5 the Montana Catholic Daughters of the Americas met for their State Convention. Plans are being made to host the National CDA Convention in July 2014 also in Billings. Pictured are Local Court Officers and in the front row, left to right are: Mary Smith Immediate Past State Regent; Karen Durow State Secretary; Kelly Ihde, First State Vice Regent; Carol Schaff State Regent Elect; Olga Samaniego, Second Vice National Regent; Marilyn Harkins, Second State Vice Regent; and Mary Ella Smith, Proxy for State Treasurer Jo Ann Harper. (Photo submitted by Paul Martineau)

Why Rent When You Can Buy For Less ??



Pulse 700 \$49,900



Elite 303 \$59,900



Pulse 732 \$79,900



Elite 405 \$99,900

Land/Home Packages & Turn Key Financing
Missouri Meadows, 1 Acre Lots in Williston
Easy Financing, Let us do it all for you!
3820 6th Ave. W, Williston - Next to Walmart Tire Center

701-774-5310



Plant Paradise

Linda Casey

*Many unique items
this year with
Lower Prices!*

Buy 2 Perennials, Get 1 Free!

*Trees and Shrubs • Perennials
Annual Flowers and Vegetables*

Gift Certificates Available for any Occasion or Amount

Mon - Sat: 9am - 6pm • Sun: 1pm - 6pm
406-798-3378 • 34514 Hwy 200, Sidney, Towards Lambert

Gifts Your Grad Will Love!

Apple
iPad

Kindle Fire
Mini

Beats by
Dr. Dre
Headphones

Sol
Republic
Headphones

ELECTRICLAND

 **RadioShack**

Hours: Weekdays 9:00am-5:30pm • Saturdays 9:00am-4:00pm
120 E. Main, Sidney, Village Square Mall • 433-4370
101 S. Merrill Ave., Glendive • 406-377-3645

Ready to Drink Margaritas

• Strawberrylime

• Grapefruit Tangerine

• Wild Berry

• Mango

• Strawberry

• Classic Lime

• **New Classic Lime Light**

• Golden (made with Grand Marnier)

• Ultimate (made with 1800 tequila)



SIDNEY
Liquor
STORE

Hours: Mon-Fri (9-6); Sat (9-5)

809 E. Main Sidney • 406-433-2862

Your only local retail liquor sales outlet

OUTDOORS

Lucas Cayko, of Williston, ND, had some luck on Tuesday, May 7th, which was a catch and release day for North Dakota paddlefishing, and landed this nice size paddlefish. (Photo submitted by Justin Fisketjon)



Explore





Paddlefishing at
Richland Park

Stop in & see us before you head out to the fishin' hole!



Serving
Breakfast All
Day!

OPEN 7 DAYS A WEEK • 6 A.M.-10 P.M.

Little Missouri Grille

701-444-6315 • Hwy. 85 W • Watford City, ND



Duane Kummer holds up these two nice sized Northern Pike that he reeled in at Tobacco Gardens this past weekend. (Photo submitted by Kari Kummer)

POLARIS

XP

SALES EVENT

FIND YOUR RIDE TODAY!

REBATES UP TO

\$1000*

PLUS

FINANCING AS LOW AS

2.99%**



Offers good on new and unregistered units purchased between 3/1/13-5/31/13. *On select models. See your dealer for details. **Rates as low as 2.99% for 36 months. Offers only available at participating Polaris® dealers. Approval, and any rates and terms provided, are based on credit worthiness. Other financing offers are available. Applies to the purchase of all new ATV, RANGER, and RZR models made on the Polaris Incentive Program from 3/1/13-5/31/13. Fixed APR of 2.99%, 4.99%, or 5.99% will be assigned based on credit approval criteria. An example of monthly payments required on a 36-month term at 2.99% is \$29.08 per \$1,000 financed. An example of monthly payments required on a 36-month term at 5.99% APR is \$32.76 per \$1,000 financed. See participating retailers for complete details and conditions. Warning: The Polaris, RANGER and RZR are not intended for on-road use. Driver must be at least 16 years old with a valid driver's license to operate. Passengers must be at least 12 years old and tall enough to grasp the hand holds and plant feet firmly on the floor. All SUV drivers should take a safety training course. Contact NHTSA at www.nhtsa.org or (888) 258-2560 for additional information. Drivers and passengers should always wear helmets, eye protection, protective clothing, and seat belts. Always use roll-overs. Be particularly careful on difficult terrain. Never drive on public roads or paved surfaces. Never engage in stunt driving, and avoid excessive speeds and sharp turns. Riding and alcohol/drugs don't mix. Check local laws before riding on trails. ATVs can be hazardous to operate. Polaris adult models are for riders 18 and older. For your safety, always wear a helmet, eye protection and protective clothing, and be sure to take a safety training course. For safety and training information in the U.S., call the SVA at (800) 687-3987. You may also contact your Polaris dealer or call Polaris at (800) 343-3764. ©2013 Polaris Industries Inc.



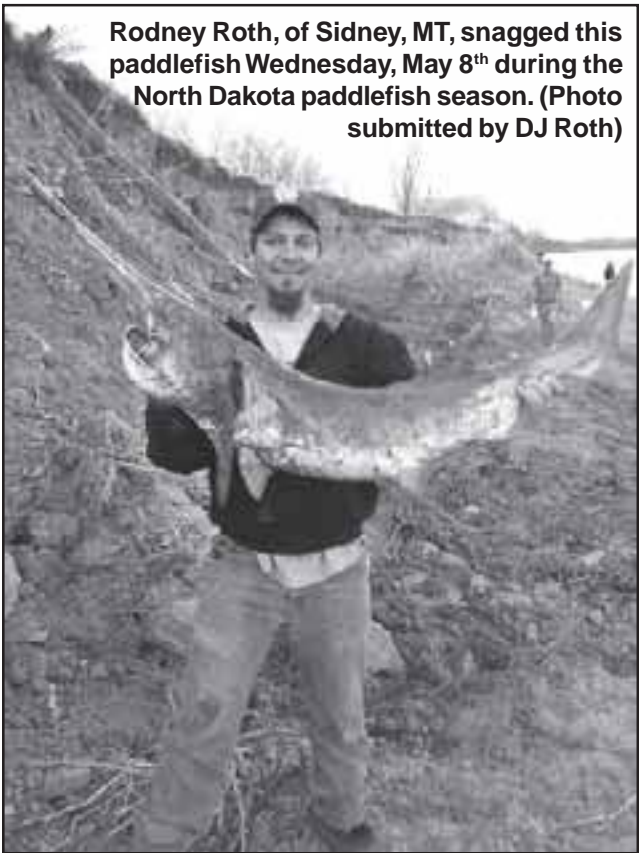
Steve Harris Jr., of Sidney, MT, with a paddlefish he snagged in North Dakota Sunday, May 5th during catch and release. (Photo submitted by Ashley Harris)

Vandals Need To Think Twice

Vandals need to think twice before committing a crime on a public site managed by Montana Fish, Wildlife & Parks.

Anyone convicted of vandalism on FWP managed sites, including fishing access sites and wildlife management areas, may lose their hunting, fishing and trapping privileges for two years. The vandalism law also carries a fine of up to \$1,000, and six months in jail. FWP officials said that criminal trespass on FWP properties may also result in the loss of hunting, fishing and trapping privileges.

Report crimes in Montana's fishing access sites, WMAs or other FWP sites by calling 1-800-TIP-MONT (1-800-847-6668). TIP-MONT callers can remain anonymous and may be eligible for a reward of up to \$1,000 upon conviction of those responsible for the crimes. TIP-MONT also takes calls reporting vandalism on public lands managed by other agencies.



Rodney Roth, of Sidney, MT, snagged this paddlefish Wednesday, May 8th during the North Dakota paddlefish season. (Photo submitted by DJ Roth)



Grady Nelson, 7 years old from Sidney, MT, with a nice size catfish. (Photo submitted by Lori Nelson)

2013 Fishing Season Opens May 18

Montana's 2013 general fishing season opens May 18. Montana's general fishing season opens on the third Saturday of May, while fishing on the state's lakes and reservoirs is generally open year round. Montana's general fishing season closes Nov. 30.

To prepare for the 2013 fishing season, pick up the state fishing regulations at FWP offices, license providers, or FWP's 2013 Fishing Regulations web page at fwp.mt.gov.

LONG X BOTTLE SHOP



Located In the Long X Visitors' Center

Mon-Sat: 9am - 9pm
701-444-3335
Watford City, ND



In-Store Specials Every Week

Make TJ's a stop on your way to and from the lake!

Full Menu

- Steaks • Hamburgers • Pizza
- Seafood • On/Off Sale Liquor • Drive-up Window • Full Bar • Big Screen TVs



Hwy. 85S
701-842-2771
Watford City, ND

Send us your outdoor photos!



email:
info@roundupweb.com

PROP SHOP

PROPELLER



SERVICE

Repair • Balance Pitch

Aluminum, Stainless Steel, Skeg Repair

Modern Machine WORKS

(701) 572-7741 • 1-800-319-7741
Williston, ND

We Carry All Your Recreational Needs!

- Fishing Tackle • Bait
- Coolers • Ice
- Beer & Pop
- Snack Food
- Fishing & Hunting Licenses



FARM & HOME SUPPLY

809 EAST MAIN • SIDNEY, MT • 406-433-3400

5th Annual NE Montana MONSTER CAT ROUND-UP



Tournament:
July 13th, Sidney, MT
Calcutta: July 12th, 7pm at Ranger Lounge

\$60 ENTRY FEE PER TWO-MAN TEAM

Go to www.montanacats.com
or talk to Steve at High Caliber Sports in Sidney for entry and rules.





IN ADDITION TO CARS, TRUCKS & FARM IMPLEMENTS

WE HAVE TIRES FOR

- Horse Trailers
- ATV's
- Boat Trailers
- Flatbed Trailers
- Utility Trailers
- Campers

- Motor Homes
- Garden Tractors
- Golf Carts
- Wheelbarrows
- Tillers
- More

If we don't have it, we can get it! We can also get rims.

Western Tire Co.

1601 SOUTH CENTRAL • SIDNEY, MONTANA
433-3858 • Open 7-5:30 M-F & 7-Noon Sat.

See Us Before You Go!

Montana Paddlefishing Starts May 15

- **Fishing Supplies**
Paddlefish
Walleye
Catfish & more!
Lake. River
Bow Fishing
Supplies
- **Live Bait**



WE'VE ALSO GOT:
Archery Supplies • Paintball Guns & Supplies
• Rifles • Shotguns • Pistols
Hard-To-Get Ammo

AR-15s as low as \$899⁹⁹



214 S. Central Ave., Sidney • 406-433-1800
M - F: 9am - 6pm • Sat: 9am - 4pm

Culbertson High School Graduation • May 18 at 3 p.m.



Landon Bidegaray



Benoni Bighorn



Johnathon Brown



Faith Buck Elk



Sam Casterline



Annette Chopper



Tawni DeMarrias



Jessie Dreikosen



Haillie Finnicum



Nathan Hackley



Ty Handy



Lindsey Herness



Tori Kirkaldie



Justin Larsen



Fabian Munoz



Katherine Reid



Samantha
Schneekloth



Lane Sherman



Shelby Weeks



Donald Weinberger



Evan Willcoxon

Lambert High School Graduation • May 18 at 3 p.m.



Jason Evans



Bailee Fink



Alexis Johnson



Cameron Johnson



Claire Kennedy



Taylor Mindt



Tristan Mullin



Jared Rosaaen



Jessica Williams

Bainville Graduation • May 18 • 5 p.m.



Kathryn Heen



Jaclyn Horob



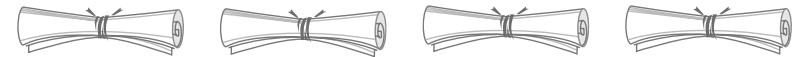
Torey Kragness



Drue Nelson



Katorina Pippenger





2013 Graduation

**Balloons • Personalized Napkins & Banners
• Popcorn • Decorations • Tableware • Gifts**
(Balloon & Popcorn preorders guaranteed before walk-ins -- walk-ins welcome)

Maroon, White, Royal Blue, Orange, Black, Green, Purple & Gold

25 - 50% off
Graduation
Decorations

**Annual
Color
Tableware
15% off**


May Madness Hours
Mondays 12-5
Tuesday-Friday 10-6
Saturdays 9-5

PARTY CENTRAL
& Main Street
POPCORN FACTORY
105 E. Main • 406-433-4FUN


**Popcorn flavors
in YOUR color**



| | | |
|--|--|--|
| Elk River Printing Sidney, MT • 406-433-4375 | | |
| Lower Yellowstone REA Sidney, MT • 406-488-1602 | | |
| North Star Auto Body & Glass Sidney, MT • 406-433-2255 | | |
| Finnicum's Hardware & Furniture Culbertson, MT 406-787-5213 | | |
| Lambert Historical Society & Fox Lake Senior Citizens Center, Lambert, MT • 406-774-3439 | Nemont discover us www.nemont.net • 800-636-6680 | Richland Federal Credit Union Sidney, MT 406-482-2704 & Culbertson, MT |
| CQ Bar & Grill Lambert, MT • 406-774-3421 | Pepsi Blue Rock Products Co. Sidney, MT • 406-433-3403 | Sidney Sugars Incorporated Sidney, MT • 406-433-3301 |
| Town & Country Repair Lambert, MT • 406-774-3475 | Roosevelt Medical Center Culbertson, MT • 406-787-6281 | Culbertson Pharmacy Culbertson, MT • 406-787-5313 |



Dmetri Ross



Brett Sheehan

Fairview High School Graduation • May 18 at 3 p.m.



Scott Andreasen



Lexi Cayko



Jered Dahl



Jordan Dahle



Seth Flynn



Cole Grimsrud



Aubrey Herron



Devin Johnson



Jacob Kilen



Logan Kjos



Masyn Klose



Kyle Lawhead



Garrett Norby



Kenzi Norman



Mitchel Otterstetter



Riley Reynolds



Brittany Schneider



Brock Schriver



Jonathan Shaide



Cody Shelmerdine



Kyle Shelmerdine



Cole Skorpil



Jace Taylor



Morgan Taylor



Cody Vitt



Rita Wick



Savage High School Graduation • May 18 at 1 p.m.



Wyatt Hagler



Lawrence Hergenrider



Shanae Prevost



Zach Tunnell



Pavlina Zahradnickova

Froid High School Graduation
May 18 at 1 p.m.

| | | |
|--|--|--|
| Sidney Sugars Incorporated Sidney, MT • 406-433-3301 | IIS Services, Inc. Fairview, MT 406-742-3630 | Lower Yellowstone REA Sidney, MT • 406-488-1602 |
| Mondak Family Clinic & Pharmacy an outreach of Sidney Health Center Fairview, MT • 406-742-5621 | Valley Garage, Inc. Savage, MT • 406-776-2237 | Western Bank of Wolf Point Wolf Point, MT • 406-653-5500 |
| Mitchell's Oilfield Service WoodGroup PSN • mitchelloilfield.com | Elk River Printing Sidney, MT • 406-433-4375 | The Oasis Greenhouse Fairview, MT • 406-744-5752 |
| Kilen Backhoe Fairview, MT • 406-798-3601 | Mon-Kota Fertilizer Fairview, MT • 701-844-5300 | Interstate Industrial Fairview, MT • 701-744-9051 |
| Double Barrel Saloon & Casino Fairview, MT • 406-742-8110 | Quinnell Electric Savage, MT • 406-776-2331 | The Savage Mine Savage, MT • 406-798-3651 |
| Pioneer Brand Products Savage, MT • 406-776-2400 | Hurley's Oilfield Services Fairview, MT • 406-742-5312 | Richland Federal Credit Union Sidney, MT 406-482-2704 & Culbertson, MT |
| Super Valu Fairview, MT • 406-742-5441 | Craig's Meat Processing Savage, MT • 406-776-2447 | Miller's Garbage Service, Inc. Savage, MT • 406-776-2334 |
| Roosevelt Medical Center Culbertson, MT • 406-787-6281 | Waterhole #3 Fairview, MT • 406-742-5224 | Powder Keg Fairview, MT • 406-742-5180 |
| Froid Grocery LLC Froid, MT • 406-766-2413 | Merchants Bank Fairview, MT • 406-742-5203 | W.L. Neu Construction, Inc. Fairview, MT • 406-742-5549 |
| Pepsi Blue Rock Products Co. Sidney, MT • 406-433-3403 | Bar JV Angus Fairview, MT • 406-798-3653 | Korner Motel Fairview, MT • 406-742-5259 |



Timothy Bouchard



Joseph Khol



Robert Kjelshus



Audrie McBride



Sarek Starks

Sidney High School Graduation • May 26 at 2 p.m.



Jesse Abelseth



Marcos Aguilar



Heidi Anderson



Courtney Anderson



Abby Balcer



Ethan Bassett



Katelyn Berry



Amy Bieber



Ashley Bjork



Molly Brodhead



Spencer Brost



Justin Brown



Jade Brunsvold



Nattanit Buaban



Ryan Buckles



Casey Burgess



Jace Buxbaum



Paige Buxbaum



Abbe Byer



Taimea Byre



Margret Carda



Carlie Carpenter



Colleen Crosby



Dain Earwood



Teresa Eggar



Dailyn Finnicum



Tim Francis



Victoria Getchell



Ruben Gomez



Jalyssa Gorder



Kalen Hance



Abigail Haraldson



Amanda Heinle



Amanda Herbst



Olivia Hintz

| | | |
|--|--|--|
| Gorder Trenching Sidney, MT • 406-482-9672 | Sidney Tax Service, Inc. Sidney, MT • 406-433-3131 | Farmers Union Insurance Cathy Hintz Sidney, MT • 406-488-8326 |
| Chad's Furniture Sidney, MT • 406-433-1005 | Taco Johns Sidney, MT • 406-433-2295 | Tri County Implement Sidney, MT • 406-488-4400 |
| East-Mont Enterprises Sidney, MT • 406-433-2910 | Richland Pump & Supply Sidney, MT • 406-488-8706 | Lower Yellowstone REA Sidney, MT • 406-488-1602 |
| Sidney Sugars Incorporated Sidney, MT • 406-433-3301 | Seitz Insurance Sidney, MT • 406-433-1411 | Gurney Electric Inc. Sidney, MT • 406-482-3204 |
| Pepsi Blue Rock Products Co. Sidney, MT • 406-433-3403 | Finnicum's Sidney, MT • 406-433-5373 | Footers Sidney, MT • 406-433-7827 |
| Frontier Sidney, MT • 406-488-4657 | Beagle Properties Sidney, MT • 406-482-4480 | Action Auto Sidney, MT • 406-433-2312 |



Joshua Holley



Maci Holst

Sidney High School Graduation • May 26 at 2 p.m.



Lane Hurst



Kristopher Iversen



Alec Johnson



Matt Johnson



Vickie Johnson



Daulton King



Sara Klein



Matthew Lang



Matthew LaPan



Jade Larson



Whitney Leuenberger



Matthew Litten



Michaela Lofthus



Lacey Lorenz



Jake Lunderby



Lane Lyseng



Heather McDonald



Brandon Miller



Heidi Miller



Ryan Miller



Alexis Mindt



Mikayla Minow



Sicily Mitchell



Colton Moran



Cole Nesper



Travis Obergfell



Keziah Olsen



Jason Papineau



Austin Papka



Jamie Pelvit



Chris Perez



Ryder Peterson



LaShell Rieger



Amy Schaffer



Cody Schroeder



Kiara Shaver



Cody Sissel



Kyle Smith



Jesse Staffanson



Krista Steinbeisser



Tyler Stevens



Chelsea Strasheim

| | | | | |
|---|--|--|--|--|
|  | | PJ's Auto Glass & Radiator Sidney, MT • 406-798-3686 | Planet Hair Sidney, MT • 406-433-4508 | Reynolds Market Sidney, MT • 406-433-2305 |
| Gem City Motors Motors Sidney, MT • 406-433-3120 | Reese & Ray's IGA Sidney, MT • 406-482-3737 | Melby Construction Sidney, MT 406-488-6624 | Sidney Body Shop Sidney, MT • 406-433-2948 | Olson Plumbing & Heating Sidney, MT 406-482-4027 |
| Regal Eagle Bar & Casino Sidney, MT, 406-433-3245 | Sidney Liquor Store Sidney, MT • 406-433-2862 | John Stockhill Jewelers Sidney, MT • 406-433-2702 | Farm & Home Sidney, MT • 406-433-3400 | Elk River Printing Sidney, MT • 406-433-4375 |
| B & J Heating, Inc. Sidney, MT • 406-482-4744 | C & L Chariot Sidney, MT • 406-488-4015 | Eagle Country Ford Sidney, MT • 406-433-1810 | The Roundup Sidney, MT • 406-433-3306 | McDonald's Sidney, MT • 406-433-1983 |
| Richland Federal Credit Union Sidney, MT 406-482-2704 & Culbertson, MT | Fulkerson Funeral Home Sidney, MT • 406-488-2805 | Hedahl's Auto Plus Sidney, MT • 406-482-3304 | The Depot Casino Sidney, MT • 406-433-4650 | B&B Builders Sidney, MT • 406-433-4401 |

Sidney High School Graduation • May 26 at 2 p.m.



Morgan Thiel



Dalton Thomas



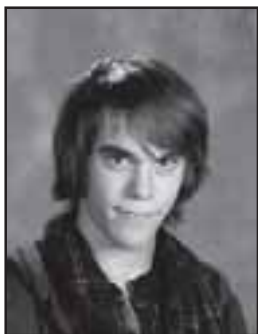
Taylor Tighe



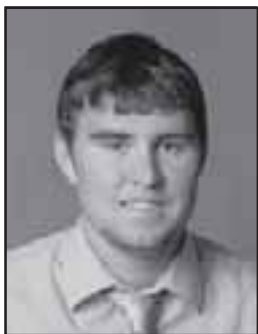
James Topp



Elise Torgerson



Zachary Uhing



Duran Vigesaa



Makenna Vissia



Amber Wentz



Molly Wilkinson



Mario Winsky



Jesse Wirth



Tommi Wise



Elizabeth Wraith



Mitchell Young



Jesse Ziler



Richey High School Graduation • May 18 at 5 p.m.



Taylor Brown



Shanna Olson



Kody Sodt



Tate Vaira



Taylor Vaira



Logan Verschoot



Lee Whiteman

Medicine Lake Graduation May 19 at 4 p.m.



Emerald Baxter



Bailey Berntson



Jynna Christensen



Emerson Engstrom



Skyler Ereth



Anthony Haase



Zach Halverson

| |
|--|
| Nemont discover us www.nemont.net • 800-636-6680 |
| Nortana Grain Co. Lambert, MT • 406-774-3331 |
| Milne Implement Co. Glendive, MT • 406-377-2533 |
| Lower Yellowstone REA Sidney, MT • 406-488-1602 |
| Farmers Elevator & Ag Center Richey, MT • 406-773-5758 |

| |
|---|
| Mitchell's Oilfield Service WoodGroup PSN • mitchellsoilfield.com |
| Sheridan Electric Medicine Lake, MT • 406-789-2231 |
| Daniels-Sheridan Federal CU Medicine Lake, MT • 406-789-2209 |
| Medicine Lake Ag Supply Medicine Lake, MT • 406-789-2524 |
| Stockman Insurance Richey, MT • 406-773-5521 |



Callie Hendrickson



Ashlin Johnson



Erin Kampen



Shayla Swallers

FOR RENT
Stick built house west of Arnegard. 3 bdrm., 2 baths, living room, dining room, kitchen, very nice; also, 2011 manufactured homes set up with water, sewer, electric, natural gas, phone, internet, cable & garbage, 16x80 homes with 3 bdrms., 2 baths, 1,280 sq. feet, good size yards, nice area and community for families, family workforce housing or company housing, homes completely furnished, including beds, furniture, appliances, utensils, etc. Located in Arnegard, easy access. Call 701-400-6075 or 701-730-5469.

SERVICES
WELDING
Welding & repair work. No job is too small. Portable welder, reasonable rates. 701-444-2936.

PAINTING
Will paint houses, barns, quonsets, silos, grain bins,

etc. References available. R&L Painting, 406-488-8244.

COMPLETE SERVICE CENTER
The Roundup provides free Fax service at Meuchel Computer Services, Watford City, ND, for all news, photos & advertising copy. You may drop your Roundup payments at Meuchels.

WINDSHIELD REPLACEMENTS
Lowest price around. Quick service. Over 300 windshields in stock for cars, pickups & semis, reflect windshields are now \$120. Magrum Motors, 1820 2nd St. W., Williston. 701-572-0114.

CONSTRUCTION/ BUILDING
Innovative Builders, new homes, additions, remodels; all phases of construction. Professional, courteous, quality; serving the MonDak region since 1976. Call 541-401-8075.

FARM & RANCH MINERALS & SUPPLEMENTS
Complete line of minerals & supplements. Protein & mineral tabs for cattle, horses & sheep. All types of liquid feed for livestock. Calving supplies. R&J Ag Supply 406-488-1953, 406-480-2006, 1-800-233-2499, Sidney, MT.

VERMEER HAYING EQUIPMENT
See us today for all your haying & feeding equipment, sweeps & farm oil. Anderson Vermeer Sales & Service. Open Mon.-Fri., 8 a.m.-5:30 p.m. 701-828-3358 or 701-828-3482 (after hrs.). Alexander, ND.

LOOKING FOR PASTURE TO RENT
Looking for pasture to rent to summer cow/calf pairs. Please call 406-774-3323.

MISCELLANEOUS FOR SALE
FIRE RESISTANT
Fire resistant clothing available at The Other Place, Culbertson, MT. Now 30% off. 406-787-5211.

SHEDS FOR SALE
\$3,000, 10x16, wood frame, metal outside, choice of door, on skids, will deliver or build on-site. Call 406-274-2512.

FOR SALE
Garbage barrels, \$5 each. Call 406-489-5626.

FOR SALE
1900s oak roll top desk, needs restoration, \$100. Partially restored vintage gas pump, \$500. Wood cabinet, 4 drawers, 4 shelves, 25"Wx74"Lx36", \$75. Call 406-482-2045.

BOXER PUPPIES FOR SALE
7 weeks, tails docked, dew claws removed, handled by kids from birth. Great family pets, call 406-914-3324.

WANTED
SIDNEY COMBAT CLUB
We train men & women for mixed martial arts competitions, self-defense and conditioning. Now meeting at Sidney Healthworks; Tues. 6:30- 8:30 p.m., Wed. 7:30-8:30 p.m., Thurs. 6:15- 7:15 p.m., Fri. 5:30- 7:30 p.m. \$35/ month. For more information, call Barry, 406-480-2024.

WANTED TO BUY
Scrap iron, scrap metal, batteries, junk vehicles, Call 406-488-1829 or 406-480-4213.

VEHICLES
FOR SALE
1980 blue Chevy pickup, 1/2 ton, 4WD, \$3,000 OBO; 2004 blue Chevy Cavalier, 4-door, brand new tires, \$5,000 OBO. Both run good, all prices are negotiable. Call 406-742-5816, please leave a message if no answer.

FOR SALE
1977 black GMC pickup, 1/2 ton, 4WD, automatic, 350 engine, runs good, \$3,000 OBO, will negotiate price. Call 406-488-3314, please leave a message if no answer.

2000 RIGHT HAND DRIVE POSTAL JEEP FOR SALE
Retired, 165,000 miles, recent work, 4WD, mail tray. Call 406-488-5837.

RECREATIONAL VEHICLES
MOTORHOME FOR SALE
1983 Pace Arrow, 33 1/2 ft., 2 airconditioners, sleeps 5, central vacuuming, some amenities included, \$4,800. Call 406-488-5837.

1984 LUND 5.5TYEE BOAT FOR SALE
Comes with Shorelander trailer, 115 HP Merc. plus 9.9 Mercury, has topper, \$4,500. Call 406-488-5837.

MOTORCYCLES
2002 HONDA GOLDWING M/C
Fully loaded, cruise, anti-lock brakes, new tires, 14,000 miles. First with \$9,500 cash takes it. Call 541-401-8075.

GIVE AWAY
GIVE AWAY
Piano, organ, stove and fridge. Call 701-842-2556 or 701-842-3259.

For Sale
FRANZ RANCH
Yearling Red Angus and Charolais Bulls
406-798-3675

Kilen Backhoe Service
• Sewers • Basements
• Water Pipelines

Marvin (406) 798-3601
Marlon (406) 489-1243
Kenny (406) 489-1426

Bakken Mobile Veterinary Service
Dr. Vince Stenson
Complete small animal care
8 am - 4 pm
Sidney:
Wed, May 15 & June 12
Yellowstone Valley Greenhouse
Culbertson:
Wed, May 22 & June 5
County Ext. Bldg on Main Street
Call for Appointment
(701) - 570 - 5510

The Roundup

Auto Trader

Only \$17 A Week!

If you run it for 2 weeks & it doesn't sell, we'll run it for 2 more weeks.....

FREE!

2008 Nissan Pathfinder SE

Hancock tires put on less than a year ago, backup camera, sunroof, 3rd row seating, Bose stereo, Excellent condition 71,500 miles.
Call (406) 581-8020



\$18,000

Lund 16 Ft Side Console Boat

50 H.P. Yahama oil inj motor w/power trim, 2 bank charger, fish finder, easy loader trailer.
Call 406-489-4279



\$2,900

Want to place an ad in the auto trader?

Email: classads@esidney.com • Call: (406) 433-3306 for details

SY Soren
New! AgriPro's Highest Return Per Acre

Kelby
High Protein and Complete Agronomics

Jenna
The Yielder with Protein

Reeder
Good Yields and Protein Under Wide Ranging Conditions

SY Tyra
New! AgriPro's Sweetly Tolerant Variety

Brennan
Balanced With High Yield and Protein

SY605 CL
High Yield CLEARFIELD® Spring Wheat

Trapeze Yellow Pea

SKOV SEED
New High Yielding Variety with Good Height and Standability

Randy Skov | Fairview, MT
406-747-5217 Home | 406-489-0165 Cell

Call Today!

AgriPro

S&S Motors

See the CLEARANCE tag specials!

| | |
|---|-----------|
| 2009 GMC Yukon XL Denali, red, 31k mi | \$44,995 |
| 2012 Chevy Suburban LT, black, dvd, 28k mi.... | \$39,995 |
| 2012 Ford F250 Lariat, maroon, 24k mi | \$39,995 |
| 2012 Jeep Grand Cherokee Limited, gray, dvd, nav, 26k mi | \$37,995 |
| 2012 Ford Explorer Limited, silver, sunroof, 32k mi..... | \$34,995* |
| 2012 GMC Acadia SLT, silver, 16k mi | \$34,995 |
| 2011 Ford F350 XLT, silver, 30k mi | \$33,995 |
| 2011 Ford F150 Lariat, white, 42k mi..... | \$33,995 |
| 2011 Ford F250 XLT, silver, 39k mi | \$32,995 |
| 2013 Ford Edge Limited, earth metallic, 23k mi.. | \$32,995 |
| 2010 Jeep Wrangler Rubicon, black, nav, 28k mi.. | \$32,995 |
| 2011 Ford F250 XLT, white, 47k mi..... | \$31,995 |
| 2011 Ford Edge Limited, black, 31k mi..... | \$29,995 |
| 2010 Chevy Silverado 1500 LTZ, red, 48k mi.. | \$29,995 |
| 2013 Ford Escape SEL, gray, 19k mi..... | \$27,995 |
| 2011 Jeep Grand Cherokee Laredo, gold 48k mi.. | \$25,995 |
| 2010 GMC Sierra 1500, silver, 35k mi | \$24,995 |
| 2011 Ford Escape Limited, red, 47k mi..... | \$21,995 |
| 2007 Chevy Tahoe LT, blue, DVD, nav, 98k mi..... | \$21,995* |
| 2008 Honda Ridgeline, black, 87k mi | \$20,995 |
| 2007 Toyota FJ Cruiser, blue, 93k mi | \$19,995 |
| 2011 Ford Escape XLT, white, 51k mi..... | \$18,995 |
| 2006 Ford Mustang, red, 67k mi..... | \$14,995 |
| 2008 Ford Taurus X SEL, silver, 89k mi..... | \$11,995 |
| 2006 Buick Lucerne CXL, white, 73k mi..... | \$11,995 |
| 2002 Ford F250 XLT, red, diesel, 174k mi..... | \$11,995 |
| 2000 Ford F350 XLT, Silver, Diesel, Manual, 225k mi.. | \$10,995 |
| 2005 Hyundai SantaFe, maroon, 64k mi | \$8,995 |
| 2006 Dodge Grand Caravan SE, green, 45k mi.... | \$8,995 |
| 2005 Pontiac G6, black, 85k mi..... | \$8,995 |
| 2003 Honda Accord EX, blue, 131k mi | \$7,995 |
| 2005 Ford Taurus SE, blue, 81k mi | \$6,995 |
| 2003 Buick Lesabre, white, 131k mi..... | \$4,995 |

www.sandsmotorsinc.com
444-2341 or Toll Free - 800-584-9205 • Watford City, ND

The Roundup

Reaching over 8,400 Households in Western North Dakota and Eastern Montana Every Week

Classified Ad Order Form (Please Print)

| | | | | |
|-----------|-----------|-----------|-----------|------------------|
| 1 | 2 | 3 | 4 | 5 |
| 6 | 7 | 8 | 9 | 10 |
| 11 | 12 | 13 | 14 | 15 |
| 16 | 17 | 18 | 19 | 20 |
| 21 | 22 | 23 | 24 | 25 |
| 26 | 27 | 28 | 29 | 30 \$7.00 |
| 31 \$7.10 | 32 \$7.20 | 33 \$7.30 | 34 \$7.40 | 35 \$7.50 (etc.) |

\$7.00 for 30 words or less; additional words 10¢ each

Number of words _____ x Number of Times _____ = Cost \$ _____

Payment Must Accompany Ad

Name _____

Mail To:
The Roundup
P.O. Box 1207, Sidney, MT 59270

Western

Mini-Storage

STORAGE
UNITS
AVAILABLE

20X20 • 10X20
10X16 • 8X9

Sidney, MT
482-3799 or 482-2666

Lunch
Menus

Sidney Schools
Thurs., May 16: French toast, sausage links, applesauce, hash browns.
Fri., May 17: Chicken drumstick, potatoes & gravy, mandarin oranges, strawberry shortcake.
Mon., May 20: Hot dogs, potato wedges, peach cobbler.
Tues., May 21: Hamburger gravy over mashed potatoes, green beans, apricots, hot roll.
Wed., May 22: Burritos, potato oles, mandarin oranges.

Richey School
Thurs., May 16: Fajitas, refried beans, veggies.
Fri., May 17: Hamburger gravy, potato, fruit, veggies.
Mon., May 20: Rib strips, mac & cheese, fruit.
Tues., May 21: Ham sandwich, chicken soup, carrots.
Wed., May 22: Cook's choice.

E. Fairview School
Thurs., May 16: Cook's choice.
Fri., May 17: Cook's choice.
Mon., May 20: Cook's choice.
Tues., May 21: Cook's choice.
Wed., May 22: Cook's choice.

Fairview School
Thurs., May 16: Hamburger stroganoff over noodles, corn, peaches, bread.
Fri., May 17: Hot dogs, chips, watermelon, raw vegetables.
Mon., May 20: Cook's choice.
Tues., May 21: Cook's choice.
Wed., May 22: Cook's choice.

Savage School
Thurs., May 16: Super nachos, green beans, mandarin oranges.
Fri., May 17: Spaghetti weiner casserole, corn/peas, bread, applesauce.
Mon., May 20: Sloppy joes, fries, celery/carrots, pears.
Tues., May 21: Beef steaks, mashed potatoes/gravy, carrots, peaches.
Wed., May 22: Cook's choice.

Lambert School
Thurs., May 16: Roast beef & swiss, chips, pudding.
Fri., May 17: Chicken patty, fries, corn, peaches.
Mon., May 20: Cook's choice, no salad bar.
Tues., May 21: Cook's choice, no salad bar.
Wed., May 22: Cook's choice, no salad bar.

Culbertson School
Thurs., May 16: Cook's choice.
Fri., May 17: Cook's choice.
Mon., May 20: Cook's choice.
Tues., May 21: Cook's choice.
Wed., May 22: Cook's choice.

Bainville School
Thurs., May 16: Italian dunkers, green beans, fruit.
Fri., May 17: Sack lunch.
Mon., May 20: Chicken strips, potatoes, bean medley, fruit.
Tues., May 21: Pizza & pineapple.
Wed., May 22: Picnic (weather permitting).

Rau School
Thurs., May 16: Cook's choice.
Fri., May 17: Sub sandwich, corn chips, celery/carrots, apricots.
Mon., May 20: Chicken drumsticks, potato/gravy, mixed veggies, peaches.
Tues., May 21: Burritos, rice, corn, mandarin oranges.
Wed., May 22: Comdogs, fries, fresh veggies, applesauce.



The drums are done boomin', the horns are done blowin' but not here at Murphy Motors!

2004 Buick Lesabre

Custom white/gray cloth, PW, PL, Pseat, TILT, SC, 3.8 V6 A/C, ATOD, all wheel, 104,184 miles. K5041C.



\$7,995

2004 Chrysler Crossfire

Chrysler's first sports car, red metallic/2 tone gray leather, PW, PL, TILT, SC V6 6-speed manual, brand new tires, all wheel, 18,689 miles. U51731.



\$13,995

2007 Cadillac DTS Sedan

Dark blue metallic/gray leather, all wheel, PW, PL, Pseat, TILT, SC, AM/FM/CD, automatic, A/C. 97,936 miles. C5161A.



\$11,995

2013 Suburban Legacy AWD Sedan

Blue metallic/ebony cloth, V6 automatic, PW, PL, TILT, SC, AM/FM/CD, all wheel. 11,439 miles. U5414A.



\$23,995

2012 Chrysler 200 LT

2.4 4cyl, auto/a/c, PW, PL, AM/FM/CD, gray metallic/ebony cloth. 25,861 miles. U4510A.



\$15,995

2012 Dodge Grand Caravan

Vacation time! V6, stow n' go, PW, PL, TILT, SC, AM/FM/CD, auto, a/c, white/ebony cloth, all wheel. 33,976 miles. U5411A.



\$19,995

2008 GMC Yukon Denali 2WD

White/cocoa cashmere leather, 6.2 V8, auto, a/c, PW, PL, TILT, SC, AM/FM/XM/CD, P. sunroof, DVD, 20" chrome wheels. 64,637 miles. C5224A.



\$31,995

2011 Jeep Patriot 4WD

Gray metallic/ebony cloth, PW, PL, TILT, SC, 4 cyl, auto, a/c, AM/FM/CD. 36,136 miles. U5398A.



\$18,495

2013 GMC Yukon XL SLT

Mocha steel metallic/ebony leather, 5.3 V8, auto, 4WD, PW, PL, Pseat, TILT, SC, A/C, mid leather, AM/FM/XM/CD. 26,052 miles. U5397A.



\$39,995

2012 Chevy Express G30

15-passenger van, PW, PL, A/C, TILT, SC, AM/FM/CD, all new rubber, white/ebony cloth. 37,028 miles. U5416A.



\$26,995

2011 Dodge Ram 2500

Rocky ridge lifted truck, 5.7 hemi, chrome wheel, auto OD, 4x4, A/C, PW, PL, Pseat, TILT, SC, leather 2-tone, P. sunroof, DVD, NAV. 6,963 miles. C5282A.



\$42,995

2011 Chevy Crew 1500 LTZ

Fire red/ebony leather, PW, PL, Pseat, TILT, SC, A/C auto 4x4, 6" assist steps, P. sunroof, DVD, NAV, Tcover, new tires. 62,379 miles. U5308A.



\$30,995

2000 Chevy 1500 4WD

ext. cab, fiberglass topper, V8 auto, PW, PL, Pseat, TILT, SC, A/C, tan/pewter, pewter cloth. 143,745 miles. G5236A.



\$10,995

2006 Ford F-150

2WD, long box, red metallic/gray cloth, V8 auto, A/C, extended cab. 28,804 miles. U5366A.



\$11,995

Credit Concerns? Apply online at www.NDcreditDR.com





SEE THESE SALES CONSULTANTS FOR QUALITY CAR BUYS!



Pat Murphy
Sales



Dale Dalling
Business Manager



Mark McGowan
Credit Doctor



Rick New
Sales Manager



Kelly Ramsey
Finance Manager



David Feltus
Field Sales



Larry Stewart
Sales



Phil Ay
Sales



Terry Lough
Sales



Tom Sney
Sales

1801 2nd Ave. W. Williston, ND Call
1-800-888-2927 or 701-577-2927
Hours: Mon. 8am-8pm ; Tues.-Fri.
8am-6pm; Sat. 9am-5pm



www.murphymotors.com

The second floor features a large living area with a fireplace and a large window, a dining area, a kitchen with a breakfast nook, and three bedrooms. The master bedroom includes a walk-in closet and a private bathroom. The other two bedrooms also have walk-in closets. The floor plan is shown in a simplified line-drawing style.

Cash Price \$50,995

Delivered, Blocks, Anchors, Skirting & Steps

2308 W Front St.

2308 West Front St. Williston • 701-572-2590
Mon, Wed, Thur: 9 - 7 • Tue & Fri: 9 - 6 • Sat: 9 - 4

**SIDNEY HEALTH CENTER
MEDICAL STAFF**



**Seeing Patients
Starting May 28**

Dr. Kessler provides primary care services to people of all ages, both acute and chronic problems, and is especially interested in helping people with ongoing health problems. He and his wife, Shelley, have lived in Sidney since 1986. To make an appointment with Dr. Kessler prior to May 28 you can call the clinic receptionist at 488-2510.



**SIDNEY
HEALTH
CENTER**

Exceptional Care for Life

Clinic Hours: Monday - Thursday 8:30AM - 4:30PM
Friday 8:30AM - 12:30PM

A mugshot of a middle-aged man with a shaved head and a serious expression. He is wearing a black V-neck shirt. The background is a white height chart with black horizontal lines and numbers. The numbers 50, 60, 70, 80, and 90 are visible on the left side of the chart. The man's head is positioned between the 60 and 70-inch marks.

Joe R. Blurton resides at Hwy 58 & 35th St NW., M Space Unit# 350, East Fairview, ND. Gross Sexual imposition. Convicted: April/2007. ND-Status: Registered, ND-Risk Level: Moderate



Robert W. Eaker resides at Watford City Man Camp - 925 24th Ave SW., #5, Watford City, ND. 3rd Degree Sexual Abuse of a Minor. Convicted: March/2013. WY-Register, WY-NonExp. ND-Status: Registered, ND-Risk Level: Undetermined.



Paul D. Walde resides at 12586 Zoe Road, Watford City, ND. Receipt of Child Pornography. Convicted: April/2003. NE-Register, NE-NonExp. ND-Status: Registered, ND-Risk Level: Undetermined.



William D. Priebe resides at 708 4th Ave NE., White Buffalo RV Camp Ground, Watford City, ND. Rape-3rd Degree. Convicted: February/1998. SD-Registered, SD-Lifetime. ND-Status: Registered, ND-Risk Level: Moderate.

Fort Union Extended Hours and Events

On Saturday, May 25, Fort Union will extend operating hours to 8 a.m.-6:30 p.m. (Central Time). These hours will be in effect from Memorial Weekend to the end of Labor Day on September 2, 2013. Fort Union's Trade House will be open every day during the summer hours with living history interpreters on site sharing the park story. The summer special event schedule is as follows:

June 13-16, Fort Union Rendezvous; Thursday 6/13, Kids Day; Saturday 6/15, Rendezvous Run; August 3-4, Indian Arts Showcase; August 31-September 2, Living History Weekend; Saturday 8/31, Last Bell Tours begin at 8 p.m. Central Time; September 21, Blacksmith Workshop.

Stop in at the visitor's center to get the latest updates on these events, or visit our website at www.nps.gov/fous or on Facebook, the site is free of charge.

Fort Union Trading Post is located 24 miles north of Sidney, Montana and 25 miles southwest of Williston, North Dakota, via highway 1804. While here, visitors are encouraged to tour the reconstructed fort, trade room and bourgeois house. Our visitor center hosts short video programs and an extensive bookstore.

For more information on Fort Union Trading Post National Historic Site, contact us at 701-572-9083.

From 1828-1867 Fort Union was the most important fur trading post on the Upper Missouri. Here, seven Northern Plains Indian Tribes, including the Assiniboiné, Crow, Blackfeet, Cree, Hidatsa, Mandan, Arikara, Lakota and Dakota, traded buffalo robes and other furs for goods such as cloth, guns, blankets and beads. This fort was a bastion of peaceful coexistence, annually trading over 25,000 buffalo robes and \$100,000 of merchandise.

