

The Roundup

PRSRT STD
U.S.
POSTAGE
PAID

The Roundup

(406) 433-3306
Fax (406) 433-4114
e-mail address:
info@roundupweb.com
www.roundupweb.com

Business Office:
Located at 111 West Main
Sidney, MT

Mailing Address:
P.O. Box 1207
Sidney, MT 59270

PRSRT STD
ECRWSS
U.S. POSTAGE
PAID
EDDM RETAIL

Local
Postal Customer

Wednesday, May 10, 2017

Volume 43 • Number 13

Richland Boys and Girls Club Members Give Book Reading at Sidney Library

By Joshua Smallwood

Some of the youngest creative members of the community demonstrated their talent at the Sidney-Richland County Library on April 4th. Seven Richland County Boys and Girls Club members were featured at a book reading of original, professionally published children's books each child had written for the WRiTE BRAiN book program. Parents, Boys and Girls Club staff and members of the community sat in attendance to watch each child read their book aloud and take questions afterward.

The children included Sienna Boehler (5th grade), Lucy Sommerfield (5th grade), Cara Henson (4th grade), Jordan and Joanna Skeens (4th and 2nd grade, respectively), Kalen Price (3rd grade) and Trevor Steiben (3rd grade). Janelle Buxbaum, Program Director for the Richland County Boys and Girls Club organized the event. The entire group of children also collaborated on a book entitled, The Journey of Benjamin Bear.

Cara Henson, who wrote The Adventures of Cheesy and Chris, a story about two mice having adventures in a supermarket, is in her first year at the Boys and Girls Club. Cara wants to grow up to be a veterinarian and said of the program, "It's very full of activities." When asked about her feelings upon becoming a published author she said, "I felt really happy and excited."

Kalen Price plans to write a sequel to his book Space Adventurers, a story about a team of heroes that must stop a villain who plans on destroying the Earth. "I felt happy with the experience of being a new author," said Kalen, who has been a Boys and Girls Club member for about a year and a half. "I want to be either a hockey player or a writer, or both."

Joanna Skeens wrote Mermaid Tail, a story about a mermaid who wants to learn how to draw. This is her third year in the program and she wants to grow up to help people in need, perhaps as a nurse. "It was amazing." She said of her experience of being published, "I felt like a big author."

The books all featured artwork which the children proudly displayed in a group photo after taking questions from the audience. Janelle Buxbaum stood by looking proudly at the children she works with on a daily basis. "It was the first year we did this program at the club," said Buxbaum, "We will continue to do it next year."

The MonDak Heritage Center Announces The Waterworks Art Museum Traveling Art Show

The MonDak Heritage Center announces the WaterWorks Art Museum Traveling Art Show. The Traveling Collection features works representative of the 38th Annual Juried Exhibit, "The Confluence," shown earlier this year at the WaterWorks Art Museum (WAM) in Miles City. The exhibit represents professional and amateur artworks from local, regional, and national artists. WAM staff selected 17 representative works from the original exhibit for inclusion in the 2017 Traveling Collection, which will tour eastern Montana until the end of 2017, with stops in Glendive, Sidney, Baker, Broadus, Colstrip, Forsyth, Hardin, and Jordan.

Stockman Bank of Miles City and the William & Lorene Nefsy Foundation co-sponsor the Juried Exhibit and the Traveling Collection tour, with additional support from the Montana Arts Council, the National Endowment for the Arts, and the Montana Cultural Trust. The show is on display Tuesday, May 2 through Saturday, May 27 at the MonDak Heritage Center. MDHC is open Tuesday-Friday from 10-4 and Saturday from 1-4. Admission is FREE. For more information call (406) 433-3500 or e-mail mdhc@richland.org.

Richland County Wildlife Exhibit By Leon Stevenson At The MDHC

The MonDak Heritage Center announces the Richland County Wildlife Exhibit by Leon Stevenson. The show features photographs of the insects, birds, mammals, and other wildlife that inhabit the region but often go unnoticed to the casual eye. A local retired machine shop owner and amateur photographer, Leon uses photography to highlight the diverse wildlife of the region, with a particular focus on area butterflies. The exhibit is on display from Tuesday, May 16 to Friday, June 30 at the MonDak Heritage Center, 120 3rd Ave SE, Sidney. MDHC is open Tuesday-Friday from 10-4 and Saturday from 1-4. Admission is FREE. Interested in showing your art? We love to hear from local amateur artists and artists-in-the-making. For more information call (406) 433-3500 or e-mail mdhc@richland.org.

MNAXLP

Arbor Day In The Parks



Mrs. Simonson's first-grade class with their tree Bronco.

Submitted by Stephanie Ridl

Two first grade classes, Mrs. Simonson and Mrs. Vine and two fifth grade classes Mrs. Shiffer and Mrs. Peters, learned about the largest trees in the world, tree safety, the importance of species diversity, proper planting and site selection.

Fifth graders calculated the value of eight different trees in Veterans Memorial Park and on Central Schools campus by using the tree calculator at treebenefits.com and hung tree tags on each of the examined trees. They were able to see how much each tree benefitted our community annually by the pounds of carbon that tree reduced, the gallons of storm water runoff it reduced and the number of kWh in electrical energy savings and the dollar figure that tree increases the property value. This info

was calculated by identifying the tree species and measuring the diameter of tree trunk at the height of 4.5 feet (DBH) These figures were quite shocking for a lot of them as it's something most people never think about. Trees have great value!

We planted 11 trees in our parks on Arbor Day and they were each a different species.

It's important to get kids involved as they are the next generation who will be looking after our trees. With the enthusiasm and hard work I saw from these students, I see a bright future for our urban forest. I want to thank the teachers and students who came out to celebrate Arbor Day and take part in Re-Treeing Sidney's parks!

Regional Columnist, Singer Celebrates The Release Of Her New Book



Statewide columnist to celebrate the release of her new book in Watford City, Thursday, May 11 from 6-8 pm at Door 204.

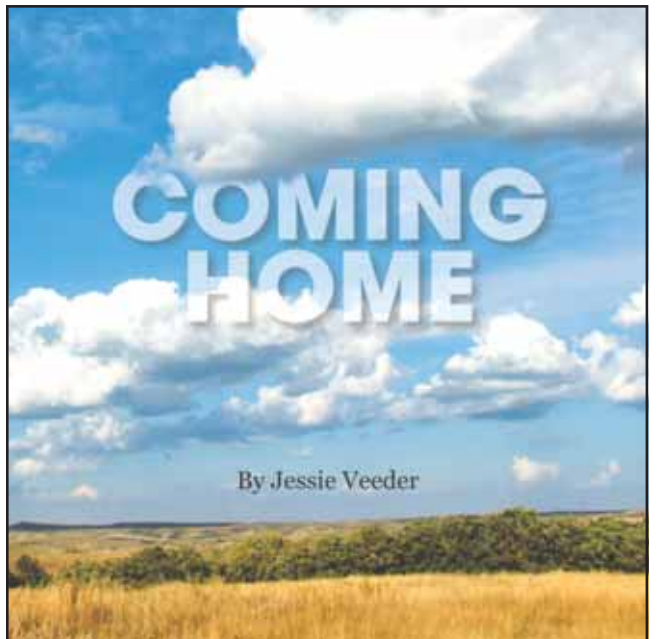
All are invited to stop in for this open house style event where Jessie Veeder will be selling and signing her book, "Coming Home."

Complimentary appetizers and refreshments will be served. Veeder is well-known across the state for her music, statewide newspaper column and popular blog, all written about her life on her family's ranch southeast of Watford City. Veeder's book "Coming Home" features select short stories, poetry, recipes and photography that she's created since she and her husband, Chad, moved back to the ranch in 2010.

Jessie's work is published weekly in the Fargo Forum, Minot Daily News, Bismarck Tribune, Dickinson Press, Williston Herald and McKenzie County Farmer. She also works as a writer for various statewide publications and magazines and is the editor of the new Dickinson Press publication, "Prairie Parent."

Jessie has been touring the country and region as a singer/songwriter and storyteller for over fifteen years, where her straight to the heart reflections prove that out here on the North Dakota plains, every story is dictated by the change of a season or a shift in the weather.

Find out more at www.jessieveedermusic.com



Veeder's new book entitled "Coming Home."



Janet Sergent
Real Estate
Loan Officer
NMLS ID# 525727

REAL ESTATE FINANCING
For Home Purchases & Refinancing
Stop in today and see Janet Sergent in Sidney



Richland
FEDERAL CREDIT UNION

www.richlandfcu.com
201 West Holly St. • Sidney, MT (406) 482-2704
18 East 2nd St. Culbertson, MT (406) 787-5890



Yellowstone Chiropractic Clinic
(406)-433-4757 222 2nd. Ave. SW
1-866-433-4757 Sidney, MT 59270



Dr. Ryan Laqua
Chiropractic Physician &
Certified Medical Examiner

• Sports Injuries • DOT Physicals
• Personal Injuries & Pain Conditions

Celebrating 45 years!
Treat Your Mom or Grad To The Powder Keg!
GIFT CARDS MAKE THE PERFECT GIFT!


Pizza Deals:
Get \$2 off Any Reg 16"
or \$1 off Econo 16"




SELECTED APPETIZER SPECIALS
50% off purchase of a 16" Pizza
25% off purchase of a 12" Pizza

PIZZA | BURGERS | BEER | AND MORE
Open Tues-Fri at 4:30pm • Sat-Sun at 2pm
Fairview, MT • 406-742-5180
FREE Ice Cream With All Purchases

UNION GATEWAY AGENCY
Your Insurance Team Independently Representing:



~Life
~Health
~Medicare Supplement
~Medicare Part D
~Group Health
~Vision
~Dental
~Long Term Care



Affac
vsp
Vision care for life

309 2nd St NW
Sidney MT 59270
phone 406-488-4366
fax 406-630-4433

©2011 Vision Service Plan. All rights reserved. VSP and Vision care for life are registered trademarks of Vision Service Plan.



MODEL DRIVE-IN CLEANERS
SCIENTIFIC "ODORLESS" CLEANING

Sidney Pickup & Delivery:
Mon & Thurs

Watford City Pickup & Delivery:
Wed & Sat



Big Sky Embroidery
Serving Sidney At
And Design
108 E Main | 406-433-7679
Mon-Fri: 10am - 5pm

DRY CLEANING | SHIRTS & JEANS STARCH | WELDERS STARCH
1129 2nd Ave W • Williston, ND | 701-572-3734
Mon-Fri: 8am - 6pm • Sat: 9am - 3pm • Sun: 12-3pm

We Welcome News & Sports Stories!

Fax To: 406-433-4114 • Call: 406-433-3306
Email To: info@roundupweb.com
Bring Stories To 111 W. Main • Sidney, MT



STATISTICS

LAKE WATER LEVEL REPORT
Sakakawea

Current Elevation.....	1841.6
Last Week's Elev.	1841.5
One Year Ago	1837.9
Release For Day (C.F.S.)	30,000

SIDNEY WEATHER DATA

Source: MSU Eastern Agricultural Research Center

Date	High	Low	Precip.
May 1.....	57.....	39.....	0.00
May 2.....	62.....	32.....	0.00
May 3.....	65.....	37.....	0.00
May 4.....	81.....	35.....	0.00
May 5.....	86.....	41.....	0.00
May 6.....	89.....	59.....	0.00
May 7.....	89.....	53.....	0.00
Total YTD Precipitation.....			1.36

John Frison, 89
Sidney, MT

Mass of the Christian Burial for John Frison, 89, of Sidney, MT is at 10 a.m., Wednesday, May 10 at St. Matthew's Catholic Church with Father Jim O'Neil presiding.
Wake services were held at 7 p.m., Tuesday, May 9 at Fulkerson-Stevenson Memorial Chapel.
Interment will be in Sidney Cemetery under the direction of Fulkerson-Stevenson Funeral Home.
Remembrances, pictures and condolences may be shared with the family at www.fulkersons.com.
John died on Thursday, May 4 at Sidney Health Center Extended Care facility.

Karolyn Harper, 67
Sidney, MT

Memorial service for Karolyn Harper, 67, of Sidney, MT was held at 10 a.m., Saturday, May 6 at Lonsdale United Methodist Church with Pastor Alton Hillesland officiating under the direction of Fulkerson-Stevenson Funeral Home of Sidney.
Remembrances, pictures and condolences may be shared with family at www.fulkersons.com.
Karolyn died on Thursday, April 27 at Sidney Health Center.

Sister And Brother
Lila Miller, 96. Sidney, MT
Andrew Miller, 92, Plains, MT

Graveside services for a sister and brother, Lila Miller, 96, of Sidney, MT and Andrew Miller, 92, of Plains, MT are at 2 p.m. Wednesday, May 10 at Sidney Cemetery, Sidney, MT with Pastor Joel Westby of Pella Lutheran Church officiating.
Fulkerson-Stevenson Funeral Home of Sidney, MT is entrusted with the arrangement.
Remembrances, condolences and pictures may be shared with the family at www.fulkersons.com.
Lila died on Friday, May 5 at Sidney Health Center Extended Care, Sidney, MT. Andrew died in March in Kalispell, MT.

Richland County
Baseball Sign-Ups

Baseball sign-ups for Richland County closes on Friday, May 19. If you are interested in registering your child to play baseball, call Jodi at 433-7679.
Legion coaches are needed for Richland County baseball. If interested, please contact Hunter at 406-581-5883.
Umpires are needed for legion games in Sidney. Please contact Nate at 480-7184 if you are interested.

2017 Eagle Wrestling Camps

The 30th annual Sidney, MT Eagle wrestling camps are coming up in June with Guy Melby and Brandon Eggum.
The Little Guy Camp, June 5-7, consists of beginners through the sixth grade. Check in 9 a.m.-3 p.m. at the Sidney High School all three days.
The Intensive Training Camp, June 4-9, check in at the Sidney High School, three times a day, times are to be determined. A great opportunity to train at an intensive training camp with teams going to the High School National Duals in Florida. Get more matches than in a regular season. This camp will push you to the next level. Report at 6 p.m., June 4.
Technique Camp, June 7-9, grades sixth-twelfth. This camp is for the more advanced wrestler. Graduates this spring cannot attend this camp. If you have someone younger, and feel they are mature enough for the older camp, go ahead and enroll them. There are two sessions per day and workouts are intensive. This camp will prepare a wrestler for the upcoming season. Check in at the Sidney High School 9 a.m.-3 p.m. all three days.

ServSafe Food Safety
Manager Courses Available

The Richland County Sanitarian is offering two sessions of the ServSafe Food Safety Manager Certification course on Thursday, June 8th, 2017, and Thursday, June 15th, 2017. Participants need only attend one day of the course. Courses will take place at the Sidney High School library computer lab from 8:30am to 5:00pm, and lunch will be provided.
The course will be a full eight-hour course with the online exam, and is open to anyone. Students are responsible for purchasing the course book and online exam test code and for opening an account with ServSafe in order to take the online exam.
Space is limited in each course. Register with Stephanie Ler at 406-433-2207 by May 26th, 2017.

MNAXLP

SAVE TIME & MONEY
WITH GREAT
COMMUNICATION!



Handhelds
TK-2402
Handheld 5 watts w/scan
\$289



Mobile Radios
Starting at **\$359.00**



Authorized KENWOOD Dealer

• 50 to 110 watts
• 16 to 127 channels
• small & easy to use

"Your communication headquarters"
Call Larry Today At...



ADVANCED COMMUNICATIONS
Mobile Radios • Satellite Telephones
Just North of McDonald's • Sidney, MT
406-433-1659 • Toll Free: 1-866-433-1659

EVENTS
SEND US YOUR EVENTS!
THE ROUNDUP: PO Box 1207
111 West Main • Sidney, MT 59270
406-433-3306 • Fax: 406-433-4114 • Email: classads@esidney.com

RICHLAND COUNTY
Events in Sidney unless otherwise listed. MT Zone.
Thurs., May 11
2 p.m. - **gOal! Performance** - West Side third graders will be performing gOal! West Side Gym.
Fri., May 12
11:30 a.m. - **Richland Red Hatters Lunch Meeting** - Sidney Country Club. RSVP by May 10. Call Nancy, 406-488-4689 or Margaret, 406-488-4613.
Sat., May 13
Stamp Out Hunger Letter Carriers' Food Drive - Put your non-perishable donation in a bag by your mailbox. We'll deliver to the local food bank. Or you can drop off non-perishable donations May 8-13 at the Sidney Post Office, Miller's Corner, IGA or Reynolds.
8 a.m. - 2 p.m. - **FCCLA Rummage Sale** - East Fairview School lunchroom. Proceeds go to Grace Dragseth fundraising for her trip to National FCCLA Convention in Nashville. You can donate items on May 12 from 12-6 p.m. at the same location.
9-11 a.m. - **Savage Rabies Clinic** - A convenient opportunity to protect your dogs and cats from rabies and distemper. Savage Fire Department, Savage, MT.
7-11 p.m. - **St. Matthew's Spring Fling** - Semi-formal dance, grades 6-8. \$8 per person. DJ music by Midnight Express, photos for \$1. St. Matthew's Parish Center, Sidney, MT. For more information call Colleen Haralson, 482-2680.
Mon., May 15
6 p.m. - **Fairview Old Timer's Reunion & Festival Committee Meeting** - St. Catherine's Catholic Church, Fairview, MT.
Tues., May 16
9 a.m. - 11 a.m. - **MOPS** - Mothers of 0-5 years old can come and connect, laugh, cry and embrace the journey of motherhood. Breakfast and childcare provided. Sidney Lutheran Brethren Church, 1100 Madison Lane, Sidney, MT. For more info contact Rachel Dasinger, 406-480-0924, sidneymops@hotmail.com.
4:30-7 p.m. - **Burgers In The Park BBQ** - Come help support the Sidney Eagle Wrestlers headed for the National Duals in Orlando, Florida June 11-18. Free will donation. Veterans Memorial Park. This event also occurs May 23 and 30.
Sat., June 3
12 p.m. - **Riding For A Reason Poker Run & Fundraiser** - 12 p.m., registration; 1 p.m., kickstands up. \$10 registration fee or \$20 includes meal, which is also available to the public. High and low hand prizes; silent auction. 8 p.m., street dance with live music by "Trial By Fire". Everyone welcome, bring your bike, car, pickup or anything that can travel on the highway on wheels and participate in a great event and have tons of fun. Pre-order your t-shirts by May 15. Call the Burns Creek Inn Bar & Grill in Savage, MT, 406-776-2323 or call or text Michelle, 406-489-2071 or Bryan, 406-489-5600 with a name, size and color (red, hot pink or gray). There will be some available at the time of the run.
Mon., June 5
8:30 a.m.-12 p.m. - **Shepherd of the Valley Lutheran Church Vacation Bible School "Kingdom of the Son"** - Ages 3-6th grade. This event continues through June 9. Register online at svlcsidney.org, call 406-433-7479 or at the church office, 211 E. Holly. A donation of \$30 per child is suggested.
Sat., June 10
9 a.m. - **Dan Miller Memorial Ride** - 9 a.m. sign up; 10 a.m. ride. There will be a poker run for those wishing to participate. This event starts and ends at the Waterhole #3 in Fairview. After the ride, family and friends can come for dinner, games, music, a silent auction and the sharing of memories. T-shirts will be available for purchase but sizes limited feel free to leave a post with your size to have one reserved. For more information call Tara at the Waterhole #3 in Fairview, MT, 406-742-5224 or Brent, 406-480-0065. An account has been set up at Merchants Bank in Fairview.

ROOSEVELT COUNTY
Events in Watford City unless otherwise listed. CT Zone
Fri., June 9
6-7 p.m. - **Frontier Days** - This event continues through June 11. Rodeos, a parade on Saturday, barn dance and concessions on the grounds. Contact Luke Anderson for more rodeo information, 406-787-5860. Rodeo Grounds, Culbertson, MT.

McKENZIE COUNTY
Events in Watford City unless otherwise listed. CT Zone
Fri., May 19
9 a.m. - **Museum Clean Up Day** - Community clean up day to help prepare the Lewis & Clark Trail Museum ready for the summer season. 102 Indiana Ave., Alexander, ND. 701-828-3595.
Thurs., May 25
6-7 p.m. - **Coffee & Conversation** - Open to anyone wanting a voice to improve the community. Conversation on underage drinking and prevention. Door 204, 204 Main St N, Watford City, ND.
Fri., May 26
7 p.m. - **Extreme Midget Wrestling** - Buy tickets at www.roughridercenter.com. Rough Rider Center, Watford City, ND. For more information call 701-842-3665.
Sat., June 3
9 a.m.-12 p.m. - **Children's Fishing Derby** - Open to children 13 years and under. 9 a.m., registration; 11:30 a.m., lunch served. Watford City Fishing Pond. Free event. For more information call Julia, 701-842-8508.

WILLIAMS COUNTY
Events in Williston unless otherwise listed. CT Zone.
Sat., May 13
10:30 a.m. - **Band Day 2017 Parade** - Amateur student marching bands from Williston and the surrounding area, floats and other parade entries that showcase local businesses, civic groups, teams and clubs. Williston, ND.
Thurs., May 18
7 p.m. - **Fort Buford History Book Club** - Join history buffs in a discussion of this month's selected book, "Tender Foot in Montana," by Frank Thompson. Free refreshments. Please call in advance, 701-572-9034. Missouri-Yellowstone Confluence Interpretive Center.
Sat., May 20
9 a.m. - **Walk MS** - With every step taken, every dollar raised, makes it much closer to ending multiple sclerosis forever. 9 a.m., check-in; 10 a.m., walk. Davidson Park, 11th Street and 9th Avenue West, Williston, ND. Register today, walkms.org, 855-372-1331.
9 a.m.-4 p.m. - **Confluence Quilters Monthly Meeting** - All experience levels invited and instruction provided. Bring your own lunch and unfinished projects. Missouri-Yellowstone Confluence Interpretive Center. 701-572-9034.
Mon., May 29
12 p.m. - **Williston Boys Baseball Golf Tournament** - Entry fee \$50 per player which includes green fees, 2 carts per team and a steak fry to follow the tournament. Williston Municipal Golf Course. To enter or for more information contact Larry Grondahl, 572-7897 or John Liffing, 572-4068.
1 p.m. - **Flag Raising Ceremony** - The 6th infantry will be at Fort Buford for the flag raising ceremony to open the summer season. The Missouri-Yellowstone Confluence Interpretive Center hours will be 9 a.m.-6 p.m. and Fort Buford hours will be 9:30 a.m.-5:30 p.m.

DAWSON COUNTY
Events in Glendive unless otherwise listed. MT Zone
Sat., May 13
All Day - **Glendive Community Garage Sale** - Don't miss out on the biggest garage sale day of the year. Glendive MT area. For more information call 406-365-4711.
9 a.m. - **Short Pine OHV Clean Up Day** - Meet at Short Pines parking area south of Glendive. 9 a.m., meeting, plans, etc.; 9:15 a.m., clean up; 12 p.m., lunch; 1:30 p.m., fun ride. Bring gloves, tools for picking up garbage, ATV, ATV trailers, camp chairs for lunch and riding gear.
Sun., May 14
11 a.m.-4 p.m. - **Taste of Spring, Spring Salad Openhouse** - Food, drinks and lots and lots of flowers. Fun, games, DIYs and great growing information throughout the day. 208 2nd Street East, Richey, MT.

Sunrise Child Care Association Celebrates Week of the Young Child



At the carnival on April 29th, we had prize drawings in three age categories. The winner of the 1-2 year old category was Conner Hackley, pictured with his Mom, Nicole and brother, Hunter.



The winner of the 3-4 year category was Jessica Entz, pictured with her Mom Caroline and sister Lilah.




Above: A basket of baby items was given to Carl, Lindsey & Ezekiel Dynneson.



Right: On May 1st, we had our final drawing for a basket of puzzles and that was won by Addalyn Hull, pictured with her Dad, Kevin.

The final event for the year will be Provider Appreciation Day on May 12, 2017. National Provider Day, also known as National Child Care Provider Day, is annually celebrated on the Friday before Mother's Day. It is a special day set aside to recognize child care providers, teachers and other educators of young children everywhere. Child care providers deserve a big "Thank you" for their dedication, commitment and compassion. (Photos submitted by Kathy Helmuth)

MNAXLP



ROB QUIST

FOR U.S. CONGRESS

With 80% of the Wealth in America controlled by 7% of Americans, there are enough millionaires in Congress. I am running as a voice for ALL Montanans.

"STAND WITH ME, MONTANA... AND I WILL STAND UP FOR You"

REMEMBER TO VOTE THURSDAY MAY 25, 2017

VOTE

PAID FOR BY ROB QUIST FOR MONTANA



OPEN HOUSE

• MAY 18, 2017 •

• 12PM - 4PM •

• GUIDED TOURS •



BURGERS • BRATS • DESSERT

3817 23rd Ave NE • Watford City, ND

For more info call MEC at 701.444.9288.

TREAT MOM THIS SUNDAY!


Brunch 11am - 2pm

Smoked Prime Rib

Chicken Cordon Bleu

Plus Our Full Menu

Try Our NEW Salad Bar!



520 N Central Ave • Sidney, MT

406-433-3300 | www.rodirongrill.com

2 EQUIPMENT AUCTIONS

TIMED ONLINE ONLY AUCTION

FRED SIELER ESTATE

Plevna, Montana

Timed Online Only Auction | Online Bidding Ends: Monday, May 22nd, 6 pm

Case IH 7120 Magnum Tractor • Kubota M125X Tractor AC D10 Tractor • JD 6600 Combine • 2015 F-250 Super Duty NH Haybine HS Series S • Hay buster 2650 Round Bale Processor • JD 2320 Swather • 2006 Featherlite STL gooseneck livestock trailer 6.8'x24' • 2007 Load Max 20'gooseneck Flatbed trailer w/ beaver tail and ramps • 2012 F350 Ford Super duty 4x4 pickup w/ KrogmanBaleHandler, 45,112.6miles • Spray Coupe • Shop-Misc. Items • Yamaha ATV • Livestock Equipment • Hay-Straw • Tillage Equipment Grain Handling • Grain Trucks Dan Sieler Personal Representative Telephone 406-868-0092



COMPLETE FARM DISPERSAL





ROSEBUD COUNTY & GUESTS

Timed Online Only Auction | Online Bidding Ends: Tuesday, May 23rd, 6 pm

2004 Ford F450 Super Duty 4 X 4 Ambulance, • 2001 F250 Super Duty 1993 Ford Ranger XLT • 1998 Chevy Cheyenne • 1992 Chevy Silverado Batco 1335 belt auger • Kawasaki 3010 Trans 4X4 side by side ,470 hours, one owner 1987 Lode Master cross gate gravel pup trailer Trailers • Implements • Lawn Equipment • Recreational Equipment • Cattle Guards • Heavy Duty Winches • 5th Wheel Hitch











SEE WEBSITE FOR MORE DESCRIPTIONS & PHOTOS! Bid Your Price Online Only At: www.kinseyauction.com 406.772.5812



A step in the right direction...

From construction to permanent financing, our real estate lenders find solutions that work for you!



Cheryl VanEvery
NMLS ID# 523475



Julia Hill
NMLS ID# 403732

Call or stop in today and let's get started!

APPLY ONLINE ANYTIME AT STOCKMANBANK.COM



Montana's Brand of Banking

301 West Holly Street
Sidney: 433-8600

stockmanbank.com
©2017 Stockman Bank | Member FDIC

GET GROWING!

Huge Selection of:

- Bedding Plants •
- Perennials •
- Shrubs •
- Trees •

Handy Andy's Nursery
Since 1952
Mon-Fri: 9am - 7pm
Sat: 9am - 6pm • Sun: 12-5pm
3515 West Front St
Williston, ND | 701-572-6083

COOKS ON MAIN
for the everyday chef

**This Mother's Day
GIVE THE GIFT OF COMFORT!**

SAVE 20%
ON ALL WELLNESSMATS
NOW THROUGH MAY 14TH

WELLNESSmats
A Healthy Way of Life

check us out at www.cooksonmain.com or visit us on facebook

Open Mon - Sat: 9am - 6pm
224 Main Street • Williston, ND
701-572-COOK (2665) • (F) 701-572-2666

RTC Sponsors Nelson For Youth Tour

Grace Nelson, a junior at Alexander High School, is attending the 2017 Foundation for Rural Service (FRS) Annual Youth Tour, June 3-7. Each year, in collaboration with National Telecommunications Cooperative Association member companies, FRS brings rural students from across the United States to Washington, D.C. for a four-day tour.

While in Washington, Grace will learn about the telecommunications industry, as well as the regulatory and legislative processes. She will visit the U.S. Capitol and the U.S. Department of Agriculture, and meet with industry leaders and members of Congress. Attendees will be given ample time to explore the Nation's Capital and its many attractions such as the Lincoln and Jefferson Memorials; the Korean, Vietnam and new World War II Memorials; Mount Vernon; home of George Washington; the Smithsonian Museums; and much more.

Every year RTC randomly selects a school within their serving area. In turn that school selects a high school junior to attend the expense-paid FRS Youth Tour. Alexander High School was drawn this year and Grace Nelson was selected. Grace tutors other students and helps in elementary classrooms. Grace is the football team manager and is the lead alto in the school choir.



Grace Nelson

Celebrating National Healthcare Week
May 7-13, 2017

Sidney Health Center's mission is to help those we serve achieve their highest level of health and well-being. Our employees and medical providers are guided by the organization's core values... Integrity, Compassion, Accountability, Respect, and Excellence. Simply stated, we are committed to the "I CARE" philosophy because we care about our patients, residents and guests through the services we offer.

- Aesthetic Medicine
 - Assisted Living
 - Audiology & Hearing Aid
 - Cardiopulmonary Rehab
 - Cancer Care Services including:
Radiation Therapy & Medical Oncology
 - Diabetes Education
 - Emergency Services
 - Extended Care
 - Fitness Center
 - Home & Community Based Services
 - Hospice
 - Nutrition Education
 - Obstetrics
 - Personal Care Services
- Pharmacy Services
Prescription, Medical Equipment & Supplies
 - Pulmonary Rehab
 - Radiology Services including:
Bone Densitometry Scan, CT Scan, Mammography, Nuclear Medicine, MRI and Ultrasound
 - Rehab Services including:
Occupational, Physical & Speech Therapy
 - Respiratory Therapy
 - Respite and Short Stay Accommodations
 - Sleep Center
 - Surgery
 - Visiting Nurse
 - Volunteer Opportunities
 - Walk-In Clinic
 - Wound Care



Hospital: 488-2100
Extended Care: 488-2300
Toll Free: 1-800-331-7575
Hospital • 216 14th Avenue SW • Sidney, MT
Extended Care • 104 14th Ave NW • Sidney, MT

Find us on **Facebook**
Visit us online:
www.sidneyhealth.org

Stamp Out Hunger
FOOD DRIVE
LETTER CARRIERS
FOOD DRIVE
SAT. MAY 13, 2017

The Sidney Post Office, IGA, Reynolds Market and Miller's Corners will be accepting donations for the food drive between May 8 - 13. All donations will remain in our local food bank.

Please Check The Expiration Dates! We Cannot Accept Any Donations That Are Expired.

THE BUSINESS ROUNDUP
REACH 26,500 READERS IN THE ENTIRE MONDAK REGION
406-433-3306 OR 800-749-3306 ~ info@roundupweb.com
GO TO WWW.ROUNDUPWEB/DIRECTORY FOR DIRECT LINKS TO COMPANY WEBSITES & LOCATIONS

\$25⁰⁰/WK

BIG SKY Surveying, PC.
Joseph L. Kauffman, 12211 PLS

- Subdivisions
- Land Use Consulting
- Topographic Survey
- Family Transfers
- Boundary Adjustments
- Construction Surveying
- Environmental Consulting
- F.E.M.A. Flood Plain Mapping

PO Box 170 • Sidney, MT 59270 | 406-488-9452 • 406-250-9452 | 215 S Cental Ave • Sidney, MT

KOLSTAD EYE CLINICS
SIDNEY MONTANA

FULL SERVICE
UPDATED EQUIPMENT • REASONABLE PRICES

Office Open Mon-Wed 9am - 5pm
Doctor Is In Every Monday. Walk-Ins Welcome On Mondays
1405 4th ST SW • Sidney, MT | 406-433-2705

HANDYMAN ZANE

Fix It or Build It, All Work Guaranteed Professional!

Finish Carpenter And **Always**
Licensed Contractor **Happy To Help!**
Remodels, Additions, Decks & Steps
701-580-6498 | zane_caldwell@yahoo.com

For all your Farm/Ranch, Recreational, Residential, and Commercial needs.

Alan Seigfreid
Amanda Seigfreid

Jim & Janice Knudsen 120 2nd St. N.E. • Sidney Mt. 59270
Broker/Owners (O) 406-433-3010 • (C) 406-489-3010
email: alans@midrivers.com
Website: www.missouririverrealty.com

HOSE ASSEMBLIES WHILE YOU WAIT

Fluid Connectors - Industrial Hose - Seals
Hydraulics - Pneumatics - Automation
Filtration - Racor - Instrumentation
Parker Store

406.433.1590
After Hours: 406.479.3116
Fax: 406.433.1589

SIDNEY, MT
205 2nd Ave NE
WWW.MFCPINC.COM

DOORBUSTN
Portables & Septic Service, LLC

Blaine Rogers, Owner

PO Box 1083
Sidney, MT 59270

Office: (406) 433-7586
Fax: (406) 433-7586
Service: (406) 488-9915

www.doorbustnportablessepticsevice.com

MARTINI STEEL & SEAMLESS RAIN HANDLING
Serving The Region For 50 Years!

- Seamless Rain Gutters
- Siding & Roofing
- Soffit & Fascia
- Maintenance-Free Decks

Office: 406-798-3828 • Tom: 406-480-9078 • Dan: 406-291-0437

Customer Service is Our #1 Priority

Farm & Ranch Products & Construction Materials. New Steel, Auminum & Stainless.

Brady Smelser • Tim Mulholland • Kelly Moody • Bret Smelser • Ernie Gawryluk

Sidney 35002 CR 123 406-433-7737 1-855-810-2995

Glendive 2703 W. Towne St. 1-800-423-5219

Williston 13896 W. Front St. 1-800-820-5493

Plentywood Hwy 16 East 406-765-2624

NICK JONES REAL ESTATE
REALTOR®

TRUCK ROUTE SOUTH, SIDNEY
OR CONTACT ONE OF OUR AGENTS:

JUSTIN JONES 406-480-9525 DENNIS WICK 406-480-1550 JERRIAN FRANZEN 406-478-3773 KRISTIN LARSON 406-480-5139 HOME: 798-3115

WWW.NICKJONESRE.COM

YOUR COMPANY HERE

Roundup
WEB.COM

Cody Fulton
Agricultural Engineer

Irrigation Design
Well Drilling & Well Service Manager
Water Professionals • Underground Contractors

Toll Free: 1-877-488-8066
Office: 1-406-488-8066
Cell: 1-701-770-5110
Fax: 1-406-488-8067
cody@h2oagri.com

1775 S CENTRAL AVE • SIDNEY, MT 59270 | WWW.AGRIINDUSTRIES.COM

Eastern C Divisional Track & Field Meet

Thursday, May 18th At The Wolf Point Track Field



Schedule of Events:

Track Events

10:00am	100 Meter Hurdles Trials	Girls
	110 Meter Hurdles Trials	Boys
10:30am	100 Meter Dash Trials	Girls
	100 Meter Dash Trials	Boys
10:50am	1600 Meter Run	Girls
	1600 Meter Run	Boys
11:20am	200 Meter Dash Trials	Girls
	200 Meter Dash Trials	Boys
11:50am	400 Meter Relay	Girls
	400 Meter Relay	Boys
12:20pm	400 Meter Dash	Girls
	400 Meter Dash	Boys
Lunch Break		
2:00pm	100 Meter Hurdles Finals	Girls
	110 Meter Hurdles Finals	Boys
2:20pm	800 Meter Run	Girls
	800 Meter Run	Boys
2:40pm	100 Meter Dash Finals	Girls
	100 Meter Dash Finals	Boys
3:00pm	300 Meter Hurdles	Girls
	300 Meter Hurdles	Boys
3:30pm	200 Meter Dash Finals	Girls
	200 Meter Dash Finals	Boys

3:50pm	3200 Meter Run	Girls
	3200 Meter Run	Boys
4:30pm	1600 Meter Relay	Girls
	1600 Meter Relay	Boys

Field Events

10:00am	Pole Vault	Girls
	Shot Put	Girls
	Javelin	Boys
	Long Jump	Boys
11:30am	Discus	Girls
	Triple Jump	Girls
	High Jump	Boys

Lunch Break

1:15pm	Javelin	Girls
	Long Jump	Girls
	Pole Vault	Boys
	Shot Put	Boys
2:45pm	High Jump	Girls
	Discus	Boys
	Triple Jump	Boys

TRIPLE
DISPOSAL
776-2500
SAVAGE, MT

Participating Teams: Lambert, Grenora, Froid/Med. Lake, Brockton, Culbertson, Bainville, Fairview, Savage & Circle.

MEDICINE LAKE AG SUPPLY MARATHON SEED CLEANING

Chris & Amy Ator

Owners

PO Box 245 • 220 Main Street
Medicine Lake, MT 59247
789-2524 • 789-2493
Toll Free 1-866-528-7733
Cell 765-7453
marathon@nemontel.net

POWDER KEG
EST. 1972
Family Dining
Open 4:30 pm Tue-Fri
2 pm Sat & Sun
Fairview • 406-742-5180

FORT PECK HOUSING AUTHORITY YOUTH ACTIVITIES PROGRAM

The FPHA Youth Activities Program works hard to promote healthy, safe, educational & recreational opportunities & activities for the youth of the Fort Peck Reservation. Visit our website at www.fphayouthrec.com

NEU'S SUPERVALU

- Grocery • Bakery
- Fresh Meat • Beer
- Ice • Snacks
- Full Service Deli

406-742-5441
303 S Ellery St • Fairview, MT

NORTANA GRAIN CO
LAMBERT • SIDNEY
LAMBERT, MONTANA
406-774-3331
SIDNEY, MONTANA
406-433-3014
406-433-2508

406-742-5224
Water Hole #3
Fairview, Montana
416 S. Ellery

LAMBERT HISTORICAL SOCIETY & FOX LAKE SENIOR CITIZENS CENTER
Lambert, MT
406-774-3439

DOUBLE BARREL SALOON & CASINO
Open 10am - 2am Daily
401 Ellery Avenue
Fairview, MT
406-742-8110
Steakhouse Hours:
Sun-Thurs: 5-9pm
Fri & Sat: 5-10pm

GOOD LUCK FAIRVIEW WARRIORS!
Call 742-5261 for Your Appointment Today!
MONDAK FAMILY CLINIC
An Outreach Service of
SIDNEY HEALTH CENTER
M-TH: 8:30am - 5pm
Fri: 8:30am-Noon
304 S Ellery Ave • Fairview, MT

TOWN & COUNTRY REPAIR
406-774-3475
Lambert, MT

Daniels-Sheridan
Federal Credit Union
Your savings federally insured to \$250,000.
National Credit Union Adm., a U.S. Govt. Agency
Serving Daniels, Sheridan & North Valley Counties
Scobey, MT
P.O. Box 1160 • 487-5391
Medicine Lake, MT
PO Box 267 • 789-2209

Prairie Electric
406-776-2474
prairieele@midrivers.com
Savage, MT

Millers Garbage Service
Savage, MT
406-776-2334

FINNICUM'S
Hardware
Furniture
Appliances
Giftware
Culbertson, MT • 406-787-5213

Good Luck!
From
THE SAVAGE MINE
PO Box 30 • Savage, MT
406-798-3651

CASE IH
County Implement
Sidney, Montana
406-688-4400
2429 W. Holly St.
406-488-4400

NEU CONSTRUCTION, INC.
Oil Field Roads & Locations
Reclaim Work
Gravel & Scoria Hauling
Fairview, MT
406-742-5549
neuconst@midrivers.com

Mon-Kota, Inc.
Fertilizer & Irrigation
Sales & Service
Reinke plus program
Platinum Plus Certified
Fairview, MT • 701-844-5300
Reinke
MORE RIGHT THAN RAIN

QUINNELL ELECTRIC
• Commercial
• Residential
• Remodels
• New Construction
Chuck Quinnell
406-776-2331

GOOD LUCK!
From the Fairview School Staff
FAIRVIEW WARRIORS

HURLEY'S OILFIELD SERVICES
• Potable Water • Sewer System
• Loaders • Communications
• Backhoe • Trucking
• Skid Houses • Porta Potties
Dispatch: 701-844-1234
Fairview, MT

THE OASIS GREENHOUSE
3½ miles north of Fairview on Hwy 58
701-744-5752
oasis@midrivers.com

All You Need In One Quick Stop!
B&S QUICK STOP
Brockton, MT • 786-3229

Craig's MEAT PROCESSING 776-2447
Savage, Montana
• custom meat processing
• curing & smoking
• sausage & Jerky
• wild game
Slaughter at the plant or your farm!

GRADUATION 2017

Culbertson High School Graduation • May 20th at 1:00 pm



Joseph Bawden



Elizabeth Cady



Michaela Cathey



Jonathan Hilde



Chase Kilzer



Macy Kirkaldie



Parker Laqua



Tessa Larsen



Charlee LeMay



Chantelle Lingle



Sierra Machart



Logan Nickoloff



Brayden Olson



Austin Pedersen



Emma Pederson



Skyler Tibbs



Havanah Wettlin



Kaitlyn Yuzicappi

Lambert High School Graduation • May 20th at 10:30 am



Emily Carda



Wyatt Cayer



Austyn Chacon



Abbigail Herman



Kelvin Hill



Raean Jessen



Colin Kennedy



Trent Lien



Rain Rehbein



Rachel Thompson



Seth Torgerson



Casey Watson

Bainville High School Graduation • May 20th at 1:00 pm



Brennen Brunelle



Mackenzie Butikofer



Jameson Egemo



Trustin Holcomb



Gracie Jorgenson



Alisia Lozano



Dylan Rabbe



Abby Reidle



Austin Romo



Elijah Romo



Jaden Smith



Med Lake High School Graduation • May 20th at 4:00 pm



Jacob Abar



Jordan Anderson



Christopher Balikian



Kyla Frary



Kaylee Rasmussen



Hurley's Oilfield Services
Fairview, MT • 701-844-1234

Tri County Implement
Sidney, MT • 406-488-4400

Interstate Engineering
www.interstateeng.com

CQ Bar & Grill
Lambert, MT • 406-774-3421

PJ's Auto Glass & Tint
Sidney, MT • 406-798-3686

Sidney Sugars Inc.
Sidney, MT • 406-433-3301

Pepsi-Cola of Sidney
406-433-3403

Gem City Motors
Sidney, MT • 406-433-3120

CHMS, P.C.
Sidney, MT • 406-433-2092

Roosevelt Medical Center
Culbertson, MT • 406-787-6400

Lower Yellowstone REC
Sidney, MT • 406-488-1602

Reynolds Market
Sidney, MT • 406-433-2305

Richland Pump & Supply
Sidney, MT • 406-488-8706

Elk River Printing
Sidney, MT • 406-433-4375

Richland Federal Credit Union
Sidney, MT • 406-482-2704
Culbertson • 406-787-5890

Nortana Grain
Lambert, MT • 406-774-3331

Town & Country Repair
Lambert, MT • 406-774-3475

Lambert Historical Society & Fox Lake Senior Center
Lambert, MT • 406-774-3439

The Roundup
Sidney, MT • 406-433-3306

Daniels-Sheridan FCU
Med Lake, MT • 406-789-2209

Medicine Lake Ag Supply
Med Lake, MT • 406-789-2524

Sheridan Electric
Med Lake, MT • 406-789-2231

GRADUATION 2017

Savage High School Graduation • May 13th at 1:00 pm



Lexi Joslin



Bryar Lange



Tucker Lien



Bailey Micheletto



Clay Sheehan



Dustin Wyckoff



Veronica Orcutt



Paige Robertson



Chantelle Strandlund



Anistyn Young

Froid High School Graduation May 20th at 7:00 pm



Coltin Danielson



Zach Engelke

Richey High School Graduation May 20th at 3:30 pm



Cierra Bireley



Sydney Brost



Seth Brown



April Kavanaugh



Tanner Schipman



Ellie Volbrecht

Fairview High School Graduation May 21st at 12:00 pm



Brett Andreasen



Jenna Bieber



Kacie Brodhead



Braden Burman



Taryn Candee



Kelly Danielson



Grace Dragseth



Justina Fugate



Patrick Hardy



Chandler Hunter



Martha Hurley



Micah Hurley



Parker Jensen



Emily Mocko



Chandler Norby



Lane O'Connor



Tylor Patten



Tanner Reynolds



Justice Root



Jordan Sayles



Courtney Seadeek



Emma Skov



Jonathan Tabbert



Zachary Tabbert

Hotel Albert Lounge & Casino
Fairview, MT • 406-742-5164

Gold Rush Casino & Liquor Store
Fairview, MT • 406-742-4653



Congratulations To All Of Our Seniors! - From The Fairview School Staff



PJ's Auto Glass & Tint
Sidney, MT • 406-798-3686

Elk River Printing
Sidney, MT • 406-433-4375

Sidney Sugars, Inc.
Sidney, MT • 406-433-3301

Richland Pump & Supply
Sidney, MT • 406-488-8706

Triple S Disposal
Savage, MT • 406-776-2500

Reynolds Market
Sidney, MT • 406-433-2305

Pepsi-Cola of Sidney
406-433-3403

Lower Yellowstone REC
Sidney, MT • 406-488-1602

Stockman Insurance
Richey, MT • 406-773-5521

Richland Federal Credit Union
Sidney, MT: 406-482-2704
Culbertson: 406-787-5890

Tri County Implement
Sidney, MT • 406-488-4400

Craig's Meat Processing
Savage, MT • 406-776-2447

Gem City Motors
Sidney, MT • 406-433-3120

Mon-Kota Fertilizer
Fairview, MT • 701-844-5300

Hurley's Oilfield Services
Fairview, MT • 701-844-1234

Waterhole #3
Fairview, MT • 406-742-5224

MonDak Family Clinic
Fairview, MT • 406-742-5621

Double Barrel Saloon & Casino
Fairview, MT • 406-742-8110

Interstate Engineering
www.interstateeng.com

Powder Keg
Fairview, MT • 406-742-5180

W.L. Neu Construction, Inc.
Fairview, MT • 406-742-5549

Korner Motel
Fairview, MT • 406-742-5259

Neu's Super Valu
Fairview, MT • 406-742-5441

The Oasis Greenhouse
Fairview, MT • 406-744-5752

Pioneer Brand Products
Savage, MT • 406-776-2400

Miller's Garbage Service
Savage, MT • 406-776-2334

Quinnell Electric
Savage, MT • 406-776-2331

The Savage Mine
Savage, MT • 406-798-3651

Prairie Electric
Savage, MT • 406-776-2474

The Roundup
Sidney, MT • 406-433-3306

GRADUATION 2017

Sidney High School Graduation • May 21st at 2:00 pm



Ian Aldrich



Garrett Basta



Jordan Baxter



Jace Benson



Alexia Berube



John Beyer



Shaelyn Bowlds



Justin Candee



Johren Carpenter



Casey Christian



Mateya Coffman



Doina Danu



Parker Dean



Nakieta Dietrich



Maddison DiFonzo



Laura Elmore



Bree Fischer



Michael Gangstad



Jorge Garcia



Kasey Gorder



Jacey Hammer



Andrew Hansen



Emily Hanson



Allyson Harris



Tessa Hill



Jazmine Hodge



Skylar Imhof



Jerren Jensen



Landan Jones



Trace Jones



Jared Jurgens



Gage Knight



Tayler Lange



Autumn Larson



Hayley Leamer



Garret Leland



Michael McGinnis



Dawson McGlothlin



Paige Metz



Taylor Miller



Sabryna Moe



Troy Monson



Brett Norby



Mclaryn O'Neil



Sierra Osborne



Logan Peterson



Shyan Phend



Atitaya Poka



Dyllon Popescu



Jacob Rogers



James Rohner



Joshua Rohrman



Laurel Sartin



Christine Schabert



Taylor Schepens



Cristian Seitz

Sidney Sugars Inc.
Sidney, MT • 406-433-3301

Tri County Implement
Sidney, MT • 406-488-4400

Elk River Printing
Sidney, MT • 406-433-4375

Reynolds Market
Sidney, MT • 406-433-2305

Richland Federal Credit Union
Sidney, MT • 406-482-2704 | Culbertson • 406-787-5890

East-Mont Enterprises
Sidney, MT • 406-433-2910

Taco Johns
Sidney, MT • 406-433-2295

Richland Pump & Supply
Sidney, MT • 406-488-8706

Pepsi-Cola of Sidney
406-433-3403

Lower Yellowstone REC
Sidney, MT • 406-488-1602

Gem City Motors
Sidney, MT • 406-433-3120

Interstate Engineering
www.interstateeng.com

Hedahl's Auto Value Parts Stores
Sidney, MT • 406-482-3304

The Roundup
Sidney, MT • 406-433-3306

IN STOCK NOW!

Check Out The “Ward”

28' x 68', 4 bedroom, 2 bathroom, lots of living space

\$108,995

plus setup & tax where applicable

Useman Homes

YOU'RE HOME, NOW.

Mon: 9am - 7pm • Tues-Thurs: 9am - 6pm

Fri: 9am - 5:30pm • Sat: 9am - 4pm

2308 West Front St. Williston, ND | 701-572-2590

FREE DELIVERY WITHIN 100 MILE RADIUS!

2308 W Front St.

SPRAY-EZ OF NORTH DAKOTA

OFFERING SPRAY FOAM INSULATION FOR:

• Residential

• Commercial

• RVs & Other Motor Homes

WE’LL SPRAY IT ALL!

Spray-EZ Foam Insulation Is Locally Owned • Reasonable Rates

Call Dean At: 701-799-3323 | Alexander, ND | Licensed & Insured

GRADUATION 2017

Sidney High School Graduation • May 21st at 2:00 pm

Lane Shields

Peachlyn Simons

Zach Sommerfeld

Brenley Steinbeisser

Jared Steinbeisser

Kirsten Strickland

Emily Swenson

Madison Thiessen

Michael Thompson

Mackenzey Tucker

Quinlyn Tuttle

Hanna Tyler

Jordan Tyler

Nick Ullman

Seth Ullman

Amanda Valnes

Cody Voss

Tanner Wacha

Tia Welzenbach

Adam Wentz

Jonathan Wenzel

Nathan Wick

Patrycja Wierzchalek

Megan Wiggins

Chantel Wilcoxon

Ashley Wilson

Kasey Young

Kayden Young

Screen Play

Sidney, MT • 406-433-2400

Rau Elementary School

Sidney, MT • 406-482-8725

B&J Heating Inc.

Sidney, MT • 406-482-4744

Fulkerson-Stevenson Funeral Home

Sidney, MT • 406-488-2805

Gurney Electric

Sidney, MT • 406-482-3204

Seitz Insurance

Sidney, MT • 406-433-1411

Brorson Elementary School

Sidney, MT • 406-798-3361

Hurley’s Oilfield Services

Fairview, MT • 701-844-1234

Farm & Home

Sidney, MT • 406-433-3400

The Depot Casino

Sidney, MT • 406-433-4650

PJ’s Auto Glass & Tint

Sidney, MT • 406-798-3686

Footers

Sidney, MT • 406-433-7827

Party Central

Sidney, MT • 406-433-4FUN

Bar JV Angus

Fairview, MT • 406-798-3653

S/L Services

Sidney, MT • 406-433-6754

Sonda’s Solutions

Sidney, MT • 406-433-6757

Olson Plumbing & Heating

Sidney, MT • 406-482-4027

Electricland

Sidney, MT • 406-433-4370

The Roundup Classifieds

Get Up To 30 Words For Just \$9.25 • Deadline: Monday noon

Reach Over 21,000 Readers Each Week In Eastern Montana & Western North Dakota And Always On The Internet at roundupweb.com
(Paypal required for online purchases)

Add a photo to your classy online! (additional charge)

Now Taking Credit Cards! (5% charge added to all transactions)

HELP WANTED
BARTENDERS WANTED
Enjoy a private club atmosphere. Bartenders needed at the Elks Lodge, Sidney. 406-433-2406.

3RD GRADE TEACHER
East Fairview School, 2017-2018 opening: 3rd Grade Teacher, ND certification required \$39,000+ DOE. Small class sizes, 4-day school week, free single insurance, housing available
Contact: Heidi Blake at 701-

844-5649 or email at heidi.blake@k12.nd.us. Mail resume and cover letter to 301 2nd Street South, Fairview, MT 59221.

CARRIERS NEEDED
Need extra cash or want to get some exercise while getting paid? We have carrier routes available in most parts of Sidney. 406-433-3306 or fill out application at The Roundup, 111 W. Main, Sidney.

FOR RENT
3 BEDROOM TOWNHOUSE
3 bedroom, 2 1/2 bath with attached garage, modern kitchen with appliances, Northview subdivision. Call 406-489-5195.

Seed For Sale

DURUM CERT. JOPPA CERT. ALKABO BARLEY CERT. TRADITION HAYBET HAY BARLEY	OATS MORTON GREEN PEAS CERT. VIPER RED LENTIL CERT. MAXIM
---	---

SOME VARIETIES ARE LIMITED.

Signalness Farms
Larry: 701-770-2500
Jason: 701-770-0926
Watford City, ND

FOR SALE

Yearling & 2-Year-Old Angus Bulls

BAR JV ANGUS

406-798-3398
406-798-3653 • 406-480-5676

RETAIL & OFFICE UNITS
Retail & office units available for lease. Util. inc. & free WiFi. Choose your space (s) from any of our 3 levels. 406-480-7279 or 406-489-1945. Inquire at 111 W. Main, Sidney.

APARTMENT IN SAVAGE
2 bedroom apartment in Savage, washer and dryer, \$425 a month plus utilities. For more information call 406-798-3673.

PUBLIC NOTICE

Submission of Tier II is required under section 312 of the Emergency Planning and Community Right-to-know Act (EPCRA). EPCRA establishes requirement for federal, state, and local governments, Indian tribes, and industry regarding emergency planning and "Community Right-to-know" reporting on hazardous and toxic chemicals. The Community Right-to-know provisions help increase public's knowledge and access to information on chemicals at individual facilities, their uses, and releases into the environment. Tier II reports may be inspected during normal business hours 8-5 M-F at the Richland County DES Office, 123 West Main, Sidney.

Publication date of May 10, 2017

MOBILE HOME
Fairview mobile home for rent. Call 701-570-9722.

FARM & RANCH
FOR SALE
4010 JD serial #21T56616, 2800 hours on rebuilt motor, needs a clutch. Mounted Farmhand 511 loader with bucket and grapple fork, hay basket with push off and manure fork. Tractor and loader are in rough condition. Motor starts and runs good. Uses no oil, \$6,500 or best offer. Must sell, 701-744-5729.

BLACK ANGUS BULLS FOR SALE
For sale by private treaty Black Angus bulls bred for calving ease. Call Lowell Stevenson, 406-687-3635.

FOR SALE
Yearling Polled Hereford bulls, 75-80 lbs. birth weights, easy fleshing, great disposition,

INSTALLED WINDSHIELDS
FOR MOST MAKES & MODELS
ONLY \$240

MAGRUM MOTORS
Williston, ND • 701-572-0114 • 701-770-6375

bred for calving ease, milk production, high maternal traits. Great cross on black cows. Keith Rockeman, Rockeman Polled Herefords, Grassy Butte, North Dakota. 701-863-7010. Raising Polled Herefords for 65 years.

NEED PASTURE TO RENT
Looking for summer pasture to rent. Please call 406-480-9634.

FOR SALE
Portable corral panel trailers. Continuous fence 5 bar or 6 bar 20 foot sections. Gates made out of 2" pipe. Corner post station braces. Call for more information, 701-770-2260.

SIDNEY FEEDS SALE
Sale on Sweet Pro feed supplements and Redmond Salt products. For the best for your cattle and horses, call 406-488-4338.

VERMEER HAYING EQUIPMENT
See us today for all your haying & feeding equipment, sweeps & farm oil. Anderson Vermeer Sales & Service. Open Mon.-Fri., 8 a.m-5:30

p.m. 701-828-3358 or 701-828-3482 (after hrs.). Alexander.

SERVICES
R&L PAINTING
Will paint houses, barns quonsets, silos, grain bins, etc References available. R& Painting, call 406-488-8244 c 406-480-4055.

ROUND OR RECTANGULAR TABLES & CHAIRS FOR RENT
Parties, weddings, ge together. Ultimate Showdow Assoc. Located at Hefty See Co. South of Sidney, has table & chairs for rent. Will delive Call 406-488-4338.

FOR SALE
PIZZA OVEN
2 deck commercial gas pizz oven, lge, free standing, \$2,000 406-480-7279.

VEHICLES FOR SALE
GMC SIERRAS
2011 GMC Sierra 2500, 4x4 extended cab, automati transmission, 110,000 mile approximately, \$10,000 2008 GMC Sierra 1500, 4x4 extended cab, 216,000 miles automatic, \$6,500. 406-489 5378.

WANTED
PONY OR DONKEY
Looking for a pony or donkey fo my grandkids to ride. Call Pa Browne, 701-744-5678.

SY Soren
New! AgriPro's Highest Return Per Acre

SY Ingmar
Latest AgriPro Release
Very High Protein PLUS
High Yield Potential

Richlea Lentils

Brennen
Balanced With High Yield & Protein

SY605 CL
High Yield CLEARFIELD* Spring Wheat

Trapeze Yellow Pea
New High Yielding Variety with Good Height & Standability

SKOV SEED

Randy Skov | Fairview, MT
406-747-5217 Home
406-489-0165 Cell

*CLEARFIELD and beyond are trademarks of BASF. ©2002 BASF Corporation. All rights reserved. Always read and follow label directions.

AgriPro

PVPA 1994—Unauthorized propagation prohibited. Plant variety protection granted or applied for Syngenta varieties.

Call For Varieties Not Listed

Call Today!

Gartner Denowh

ANGUS RANCH

50 Private Treaty Angus Bulls

Chad Denowh 406-798-3541 • Mick Denowh 406-798-3355

www.gdar-angus.com

The Roundup

AUTO TRADER

2003 HARLEY FAT BOY
16200 miles, very good condition, excellent ride, leather saddle bags, 2 up seat, pull cover

For Info, Call: 406-978-3013

\$8,000
OR BEST OFFER

ONLY \$17 A WEEK!
If you run it for two weeks & it doesn't sell, we'll run it for two more weeks **FREE!**
classads@esidney.com • (406) 433-3306 for details

HELP WANTED

Maintenance & Support Roles

Please inquire for details

Community Cleanup Day May 19 at 9am
Lewis & Clark Museum
102 Indiana Ave., Alexander, ND

For more information please visit us on Facebook

For inquiries and applications: lewisandclarknd@gmail.com or 701-828-3595

Maurice Luke Estate

REAL ESTATE & ANTIQUES AUCTION

SATURDAY, MAY 20, 2017 • 10:00 A.M.

Location: Glendive, MT | Dawson County Fairgrounds Parking Lot
For more info, call Jim at 406-377-5708. Lunch will be available.

 **Sells At Noon!**

- Antiques
- Musical Instruments & Watches
- Real Estate
- Tools & Misc
- Vehicles

RK Rick Kniepkamp

Circle, Montana **Statewide Auction** (406) 485-2548

WE SELL & ADVERTISE ACROSS THE UNITED STATES

www.r-kauction.com

Rick Kniepkamp (406) 485-2548 or cell (406) 939-1632

The Roundup Classifieds

Reaching over 10,889 Households in Western North Dakota and Eastern Montana Every Week

(Please Print)

(1) _____	(2) _____	(3) _____	(4) _____	(5) _____	(6) _____
(7) _____	(8) _____	(9) _____	(10) _____	(11) _____	(12) _____
(13) _____	(14) _____	(15) _____	(16) _____	(17) _____	(18) _____
(19) _____	(20) _____	(21) _____	(22) _____	(23) _____	(24) _____
(25) _____	(26) _____	(27) _____	(28) _____	(29) _____	(30) _____ (\$9.25)
(31) _____ (\$9.35)	(32) _____ (\$9.45)	(33) _____ (\$9.55)	(34) _____ (\$9.65)	(35) _____ (\$9.75)	(36) _____ (\$9.85) (etc)

\$9.25 for 30 words or less; 10¢ per additional word
Payment Must Accompany Ad

of words _____ x # of Times _____ = Cost \$ _____

Mail To: _____
The Roundup _____
PO Box 1207, Sidney, MT 59270

Lunch Menus!

Sidney School
Thurs., May 11: Spaghetti, tossed salad, cheesy bread, mandarin oranges.
Fri., May 12: Cheeseburger, french fries, fresh fruit.
Mon., May 15: Corn dog, tater tots, mandarin oranges.
Tues., May 16: Ham and cheese wrap, chicken noodle soup, fresh fruit.
Wed., May 17: Burritos, tossed salad, applesauce.
Savage School
Thurs., May 11: Seniors choice.
Fri., May 12: Pizza.
Mon., May 15: Cooks choice.
Tues., May 16: Chicken a la king.
Wed., May 17: Cooks choice.
Rau School
Thurs., May 11: Meatballs, mashed potatoes and gravy, corn on the cob, watermelon, apple crisp, ice cream.
Fri., May 12: Pizza, salad, fruit, brownie.
Mon., May 15: Italian dunkers, corn, pears.
Tues., May 16: Burrito, rice, salad, pineapple.
Wed., May 17: Macaroni and cheese, green beans, apple-sauce, muffin.
Froid School
Thurs., May 11: Taco salad, lettuce mix, taco bar, fruit, milk.
Fri., May 12: Sub sandwiches, three bean salad, chips, salad bar, fruit, milk.
Mon., May 15: Taco casserole, lettuce mix, salad bar, fruit, milk.
Tues., May 16: Stromboli, veggies, go-gurts, salad bar, fruit, milk.
Wed., May 17: Chicken alfredo, garlic bread, veggies, dessert, salad bar, fruit, milk.
Bainville School
Thurs., May 11: Cheese tortellini and meat sauce, veggies, fruit.
Fri., May 12: Grilled cheese, tomato soup, fruit.
Mon., May 15: Cooks choice.
Tues., May 16: Cooks choice.
Wed., May 17: Cooks choice.
Culbertson School
Thurs., May 11: Sloppy joes, tater tots, fruit, milk.
Fri., May 12: Taquitos, chips, salsa, rice and beans, fruit, milk.
Mon., May 15: Spaghetti, salad, fruit, milk.

Tues., May 16: Corn dogs, baked beans, fruit, milk.
Wed., May 17: Ham sliders, potato salad, fruit, milk.
Richey School
Thurs., May 11: Lasagna, garlic toast, green beans, pineapple, milk.
Fri., May 12: Chicken drummies, scalloped potatoes, corn, peach-es, milk.
Mon., May 15: Pork chop sand-wich, fries, pears, peas.
Tues., May 16: Pizza, lettuce sal-ad, mandarin oranges, jello, milk.
Wed., May 17: Corn dogs, mac-aroni and cheese, fruit cocktail, corn, vanilla pudding.
Lambert School
Thurs., May 11: Chicken fried steak, mashed potatoes, gravy, corn, buns, scotcharoo, milk.
Fri., May 12: Hamburgers, tots, fruit, caramel roll, milk.
Mon., May 15: Chicken nuggets, wedges, fruit, milk.
Tues., May 16: Chalupa, fresh veggies, cookie, fruit, milk.
Wed., May 17: Buffalo chicken bake, green beans, fruit, milk.
Fairview School
Wed., May 10: Chicken burgers, peas, pears, milk.
Thurs., May 11: Uncrustables, smiley fries, pineapple, dessert, milk.
Fri., May 12: No school.
Mon., May 15: Hamburgers, chips, peaches, milk.
Tues., May 16: Ham and scal-loped potatoes, green beans, fruit cocktail, dessert, milk.
Wed., May 17: Chef salads, mandarin oranges, garlic toast, milk.
Watford City School
Thurs., May 11: Pasta bake, garlic breadstick, green beans, fruit cocktail.
Fri., May 12: Grilled cheese, tomato soup, crackers, steamed broccoli, applesauce.
Mon., May 15: Chicken patty on a bun, sweet potato fries, steamed carrots, pears.
Tues., May 16: Meatballs with gravy over buttered noodles, corn, roll, peaches.
Wed., May 17: Chicken fajitas with toppings, potato rounds, apple slices, cake.

For Sale:

Yearling Angus Bulls.
Low birth weights,
good quality with
good dispositions.

701-580-2601 • 701-572-5179
Wahlstrom Angus | Alexander, ND

ICARE

Join our team! Job Opportunities

- Ambulance Director
- Anesthesia/Perioperative Technician
- Certified Scrub Technician
- Clinic RN or LPN
- Extended Care
- Food Services Cook
- Foundation Community Engagement Coordinator

- Information Systems Technician
- Laboratory Medical Technologist/Medical Laboratory Technician
- Maintenance Worker
- Pharmacy Retail Support Technician
- Registered Nurses
- Respiratory Therapist

 **SIDNEY HEALTH CENTER**
Exceptional Care for Life

 **TOP 100**

BENEFITS: Health insurance • Generous paid leave • Competitive pen-sion plan • Flexible spending accounts • Voluntary dental, vision, critical illness and accident insurance • Life and AD & D Insurance • Hospital and Fitness Facility Discounts

For additional information or to apply online, please visit our website or contact:
Human Resources • Phone: (406) 488-2571 • HR@sidneyhealth.org
216 14th Ave SW • Sidney, Montana

Visit Our Website at: www.sidneyhealth.org

FIREMEN'S ANNUAL BREAKFAST

- Free Will Donation | Rides & Fun For The Kids | Come Support Our Firemen! -

Sunday, May 21 • 6 am - 1 pm • Sidney Fire Hall

Serving sausage, french toast, scrambled eggs, juice & coffee

This will be the last breakfast at the current Fire Hall.



Past Presidents Honored

Past presidents of the Sidney Kiwanis Club were honored last Thursday. Pictured are, back row, L to R, Randy Johnson, Tom Halvorsen, Gary Schoepp, Chuck Lowman, Alton Hillesland, Leif Anderson, David Seitz and Nick Lonski. Front row, L to R, Bill Vander Weele, Cheryl Moran, Sharon Rau, Dianne Swanson and special guest Montana District governor Bob Keene. (Photo submitted)

Montana P.E.O. Chapters Plan State Convention In Sidney

The P.E.O. chapters of Montana are planning their 2017 state convention in Sidney, Montana on June 9-11. Lois Frank, past state president of P.E.O. and a resident of Sidney, is the chairman of this year's convention. P.E.O. chapters in Sidney, Miles City and Glendive are the official hostesses for this year's event.

The convention opens Friday afternoon with "A Time of Remembrance" to honor Montana members who have passed away in the previous year. On Saturday a luncheon will be held honoring those members who have been in P.E.O. for fifty years. Throughout the weekend, emphasis is placed on the scholarship projects, for which P.E.O. is known. State officers who will be presiding over the convention are Anne Marie Kloppel, President; Sharon Tandberg, Vice President; Beverly Wornom, Treasurer; Pauline "Sissy" Nygaard, Secretary; and Karen Leftwich, Organizer.

Montana P.E.O.s are proud to have Beth Ledbetter, President of International Chapter, as the keynote speaker for the weekend. Beth was born in Jacksboro, Texas. Her P.E.O. journey began 38 years ago in Chadron, Nebraska. In 1978, Beth, her husband Howard and their three sons moved to Johnson City, Tennessee. Beth attended East Tennessee State University as a nontraditional student to finish a B.A. degree. Shortly after graduating she opened N. Beth Ledbetter & Associates, a successful real estate appraisal business.

Beth was president of Tennessee State Chapter in 2000-2001 and served a six-year term on the board of the P.E.O. Program for Continuing Education (PCE) before being elected to the Executive Board of International Chapter in 2007. Beth says, "Becoming involved in P.E.O. has been a huge education for me and an opportunity to grow in so many ways. I believe in what I promised—that we all promised—to devote a due share of our interest and energy to the Sisterhood."

Lois Frank, convention chairman, has been actively engaged in and dedicated to P.E.O.'s values and projects for 48 years. Lois and her team would like to thank the many businesses, organizations and individuals across eastern Montana who have made gifts of support to this year's convention in Sidney.

About P.E.O. – There are over 3,650 members of P.E.O. in the state of Montana. They are part of a women's organization with almost a quarter million members in chapters in the United States and Canada. This Philanthropic Educational Organization has given over \$172 million in education loans, \$49 million in Program for Continuing Education grants to women who have had their education interrupted, \$34 million to international students, and \$21 million in scholar awards to those women who are pursuing the highest level of education in the United States and Canada. The newest scholarship program for young women entering post-secondary education has awarded over \$5 million.

MNAXLP

P.E.O. has provided financial assistance to over 99,000 women pursuing educational opportunities since 1907.

For more information please contact Carol Condon, convention publicity chairman, at 406-939-4053 or email her at ccondon@gmc.org.

CB AUCTION'S

ANNUAL SPRING CONSIGNMENT AUCTION

Lunch served by Kruger's Kitchen

Saturday, May 27, 2017 at 10:00 a.m. (MDT) Sharp!

Bowman County Fairgrounds just south of Main Street, Bowman, ND

Lowell Faris

Big Valley Calf Table L or R
16' WW Horse Trailer - top & middle gates
8x60 Westfield Auger - PTO
7x34 Allied Auger w/Honda gas engine
Pickup Box Trailer w/250 gal. tank
Toolbox
4800 Watt Welder Generator w/long cables

Lane Dingfelder

100 - Used Wood Posts
10 Rolls Barbwire - used
2 - Used 20.8x38 Tractor Tires
6-1/2 Diameter Tire - could be used for water tank
5 - 6.50x16 Pickup Tires

Ken Steiner

Steel Posts
Tin

Bowman County Surplus

10 - Used 14.00R24 Blade Tires
12 - Used 11R22.5 Trailer Tires
Used 11R24.5 Truck Tire
2 - Used 235/75R15 Tires
235/60R14 Tire
265/70R17 Tire & Rim
Used Air Ride Truck Seat
22 - Used Steel Fence Posts
Like New Pickup Box for 2004 Ford F-350
5 - Small Pallets, Misc. Parts
3 - Used Filing Cabinets
10 - Used Misc. Tires
2 - Rolls Fiberglass Insulation
Electric Saw
Running Boards
Gas Powered Onan Generator

Cal Klewin

12' Very Heavy Breaking Disk - 20" blades

Rick Braaten

JD 7700 Diesel Combine Hydro - 12' JD pickup head & 2' JD straight head, nice clean unit, valve in pump has been fixed

Paul Brooks

14' V Blade
12' JD Vibrashank
14' Tandem Disk - 17" blades
JD 4 Bottom Plow & Packer
14-18' IH Field Cultivator 45 w/drag, 2 bar, small disk, no wheels
1000 gal. Vacuum Tank
Hesston M30 Stack Mover - small 8'x16'
Brand New Tube for Auger - 6"x26'

CONSIGNMENTS INCLUDE:



Case 5100 Grass Seeding Drill



Koffler Creep Feeders



JD 7610 w/JD 740 Loader w/grapple - very good



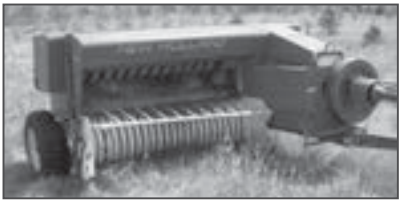
IH 5288 w/DuAl 1359 Model 3065 Bucket & Grapple - very good



Cattle Chute



JD 7700 Diesel Combine



NH 277 Baler



IH Field Cultivator

Les Paulson
2 Bottom 3 Pt. Plow
Small 3 Pt. Tree Cultivator
8' JD Snow Bucket
Grass Planter
Various Size Hopper Tanks
About 20 Pressure Treated 10" Round Posts - 4 - 6"dx40'+ long
Some Heavy Planks
Around 7 Pieces 2-3/4"x40'+ Oil Well Pipe
2 - 5"x20' Round Pipe
6 - 8" x 21' Pipe
Few Small Pieces
20 - 10"+ Gate Posts - pressure treated, used
Other Misc. Lumber
Plus More Surprises at Sale Date

Paul Peters

Older Tandem Chevy Truck w/good HD hoist box & sides, 427 engine - parts only

Bob White

Some Goodies

Craig Egeland

Case 5100 Grass Seeding Drill - 6" spacing
Cattle Squeeze Chute - no head gate, steel floor, looks good
2 - Koffler Creep Feeders w/hardware
28' Flatbed Titan - 2002
20 Some 4x6-1/2 Steel Panels w/gates

Green

21' Header for 6550 Swather
Swather Transport
1983 Shasta 5th Wheel - 33'

Pat Getz

NH 277 Baler

Stuart Paulson

Cattle Guard

Ryan Jacobson

Hobart 250 Wire Welder
Water pump

Mike Hawk

JD 740 Loader w/grapple
IH 5288 DuAl 1359 Model 305 Bucket & Grapple
Cattle Chute w/self catching headgate

EXCELLENT SELECTION - GOOD USED ITEMS

LOTS OF AFFORDABLE ITEMS

Not Responsible for Accidents
Terms: Cash

C-B AUCTION SERVICE

Anything stated at sale takes precedence over any printed matter.
Sale Conducted and Clerked by C-B Auction Service
BILL BOWMAN, Auctioneer, Lic. #92 - JOLYN WASEM, Clerk, Lic. #688
701-523-3188 • cell: 701-206-0510

MORE CONSIGNMENTS BY SALE DAY

A2Z PRINTING • BOWMAN, ND • 701-523-4656 • 888-768-4656

Mother's Day Brunch

At "The Fringe"

9am - 2pm • Sunday, May 14

Carved Prime Rib, Lunch Buffet, Breakfast Buffet, Salad Bar, Fresh Fruit, And Assorted Desserts

Sidney Country Club

2250 West Holly • Sidney, MT | 406-433-7460

Adults.....

Seniors 55 & Older.....

Kids 4-12.....

3 & Under.....

\$20⁹⁵

\$17⁹⁵

\$12⁹⁵

FREE

Happy Mothers Day!

Sidney Track Team Competes in Miles City

The Sidney track team competed in Miles City last Saturday. Left: Michael McGinnis jumps to a first place finish in the long jump. Go to roundupweb.com for more photos. (Photo by Kari Jones)

DEAN'S

BACKHOE SERVICES

All Bobcat Backhoe Work!

WILL TRAVEL ANYWHERE!

Rock & Dirt Work

Landscape & Roto-Tilling • Rural Water

Basements • Driveways • Sewers

Locally Owned • Reasonable Rates

Call Dean At: 701-799-3323 | Alexander, ND | Licensed & Insured

Musser Bros.

AUCTION

TIMED ONLINE ONLY

BID NOW -- MBAUCTION.COM

ENDS: May 16 • 1:00 PM

34802 Cty Rd 122 • Sidney, MT (S end of Big Horn Vac yard)

BY ORDER OF U.S. BANKRUPTCY COURT

SEMI'S, TRAILERS, SHOP & OFFICE EQT

07 IHC 9900; Cmns ISX-500 hp, 13 spd, wet kit

07 Peterbilt 379; Cmns ISX 7037-475 hp, 18 spd

06 KW W900B; Cat C15, 10 spd, 3 axle, 4500 gal Beal tank, Sells w/92 Beal tank trailer 31' 7400 gal

06 KW W900; Cat C15-475 hp, 13 spd, 3rd axle, wet kit

02 Peterbilt 379; Cat C15-475 hp, 13 spd, 3rd axle, wet kit

07 Peterbilt 379; Cmns ISX 7037-475 hp, 18 spd

00 Peterbilt 379; Cat 2WS 3406E-475 hp, 18 spd, 3rd axle, wet kit

98 Peterbilt 379; Cat 3406-475 hp, 18 spd, 3rd axle, wet kit

96 Peterbilt 379; Parts truck, Cat 3406-550 hp, 3rd axle, Thermo-flox hydr syst

02 Chev 1500 P/U, HD; crew, 4x4, 6.0

98 Chev 3500 P/U; Bad motor, dsl, 4x4, 9' Knapheide bed, air compressor/gen

13 Tremcar Tanker; 46', 3 axle, 10,500 gal

14 PJ Dump; 14'

14 PJ Flatbed; 23', 17' tilt

05 Haulmark Enclosed; 20', t/a, bp

98 Com'l Structure Office Trailer; 56'x12'

79 Fruehauf Tanker; TAG-F2ESF9200, 38', 9200 gal

78 Beal Tanker; 42', 9500 gal

75 Timpete Tank Pup; 22', 4400 gal

SALVAGE UNITS: 75 Trailmobile Tanker; 39', 9000 gal; 84 Spartan Tank Pup; 22', 5450 gal; 85 Clough Tank Pup; 22'5, 5400 gal

79 Fruehauf Tanker; TAG-F2ESF9200, 38', 9200 gal

78 Beal Tanker; 42', 9500 gal

75 Timpete Tank Pup; 22', 4400 gal

SALVAGE UNITS: 75 Trailmobile Tanker; 39', 9000 gal; 84 Spartan Tank Pup; 22', 5450 gal; 85 Clough Tank Pup; 22'5, 5400 gal

79 Fruehauf Tanker; TAG-F2ESF9200, 38', 9200 gal

78 Beal Tanker; 42', 9500 gal

75 Timpete Tank Pup; 22', 4400 gal

SALVAGE UNITS: 75 Trailmobile Tanker; 39', 9000 gal; 84 Spartan Tank Pup; 22', 5450 gal; 85 Clough Tank Pup; 22'5, 5400 gal

79 Fruehauf Tanker; TAG-F2ESF9200, 38', 9200 gal

78 Beal Tanker; 42', 9500 gal

75 Timpete Tank Pup; 22', 4400 gal

SALVAGE UNITS: 75 Trailmobile Tanker; 39', 9000 gal; 84 Spartan Tank Pup; 22', 5450 gal; 85 Clough Tank Pup; 22'5, 5400 gal

79 Fruehauf Tanker; TAG-F2ESF9200, 38', 9200 gal

78 Beal Tanker; 42', 9500 gal

75 Timpete Tank Pup; 22', 4400 gal

SALVAGE UNITS: 75 Trailmobile Tanker; 39', 9000 gal; 84 Spartan Tank Pup; 22', 5450 gal; 85 Clough Tank Pup; 22'5, 5400 gal

79 Fruehauf Tanker; TAG-F2ESF9200, 38', 9200 gal

78 Beal Tanker; 42', 9500 gal

75 Timpete Tank Pup; 22', 4400 gal

SALVAGE UNITS: 75 Trailmobile Tanker; 39', 9000 gal; 84 Spartan Tank Pup; 22', 5450 gal; 85 Clough Tank Pup; 22'5, 5400 gal

79 Fruehauf Tanker; TAG-F2ESF9200, 38', 9200 gal

78 Beal Tanker; 42', 9500 gal

75 Timpete Tank Pup; 22', 4400 gal

SALVAGE UNITS: 75 Trailmobile Tanker; 39', 9000 gal; 84 Spartan Tank Pup; 22', 5450 gal; 85 Clough Tank Pup; 22'5, 5400 gal

79 Fruehauf Tanker; TAG-F2ESF9200, 38', 9200 gal

78 Beal Tanker; 42', 9500 gal

75 Timpete Tank Pup; 22', 4400 gal

SALVAGE UNITS: 75 Trailmobile Tanker; 39', 9000 gal; 84 Spartan Tank Pup; 22', 5450 gal; 85 Clough Tank Pup; 22'5, 5400 gal

79 Fruehauf Tanker; TAG-F2ESF9200, 38', 9200 gal

78 Beal Tanker; 42', 9500 gal

75 Timpete Tank Pup; 22', 4400 gal

SALVAGE UNITS: 75 Trailmobile Tanker; 39', 9000 gal; 84 Spartan Tank Pup; 22', 5450 gal; 85 Clough Tank Pup; 22'5, 5400 gal

79 Fruehauf Tanker; TAG-F2ESF9200, 38', 9200 gal

78 Beal Tanker; 42', 9500 gal

75 Timpete Tank Pup; 22', 4400 gal

SALVAGE UNITS: 75 Trailmobile Tanker; 39', 9000 gal; 84 Spartan Tank Pup; 22', 5450 gal; 85 Clough Tank Pup; 22'5, 5400 gal

79 Fruehauf Tanker; TAG-F2ESF9200, 38', 9200 gal

78 Beal Tanker; 42', 9500 gal

75 Timpete Tank Pup; 22', 4400 gal

SALVAGE UNITS: 75 Trailmobile Tanker; 39', 9000 gal; 84 Spartan Tank Pup; 22', 5450 gal; 85 Clough Tank Pup; 22'5, 5400 gal

79 Fruehauf Tanker; TAG-F2ESF9200, 38', 9200 gal

78 Beal Tanker; 42', 9500 gal

75 Timpete Tank Pup; 22', 4400 gal

SALVAGE UNITS: 75 Trailmobile Tanker; 39', 9000 gal; 84 Spartan Tank Pup; 22', 5450 gal; 85 Clough Tank Pup; 22'5, 5400 gal

79 Fruehauf Tanker; TAG-F2ESF9200, 38', 9200 gal

78 Beal Tanker; 42', 9500 gal

75 Timpete Tank Pup; 22', 4400 gal

SALVAGE UNITS: 75 Trailmobile Tanker; 39', 9000 gal; 84 Spartan Tank Pup; 22', 5450 gal; 85 Clough Tank Pup; 22'5, 5400 gal

79 Fruehauf Tanker; TAG-F2ESF9200, 38', 9200 gal

78 Beal Tanker; 42', 9500 gal

75 Timpete Tank Pup; 22', 4400 gal

SALVAGE UNITS: 75 Trailmobile Tanker; 39', 9000 gal; 84 Spartan Tank Pup; 22', 5450 gal; 85 Clough Tank Pup; 22'5, 5400 gal

79 Fruehauf Tanker; TAG-F2ESF9200, 38', 9200 gal

78 Beal Tanker; 42', 9500 gal

75 Timpete Tank Pup; 22', 4400 gal

SALVAGE UNITS: 75 Trailmobile Tanker; 39', 9000 gal; 84 Spartan Tank Pup; 22', 5450 gal; 85 Clough Tank Pup; 22'5, 5400 gal

79 Fruehauf Tanker; TAG-F2ESF9200, 38', 9200 gal

78 Beal Tanker; 42', 9500 gal

75 Timpete Tank Pup; 22', 4400 gal

SALVAGE UNITS: 75 Trailmobile Tanker; 39', 9000 gal; 84 Spartan Tank Pup; 22', 5450 gal; 85 Clough Tank Pup; 22'5, 5400 gal

79 Fruehauf Tanker; TAG-F2ESF9200, 38', 9200 gal

78 Beal Tanker; 42', 9500 gal

75 Timpete Tank Pup; 22', 4400 gal

SALVAGE UNITS: 75 Trailmobile Tanker; 39', 9000 gal; 84 Spartan Tank Pup; 22', 5450 gal; 85 Clough Tank Pup; 22'5, 5400 gal

79 Fruehauf Tanker; TAG-F2ESF9200, 38', 9200 gal

78 Beal Tanker; 42', 9500 gal

75 Timpete Tank Pup; 22', 4400 gal

SALVAGE UNITS: 75 Trailmobile Tanker; 39', 9000 gal; 84 Spartan Tank Pup; 22', 5450 gal; 85 Clough Tank Pup; 22'5, 5400 gal

79 Fruehauf Tanker; TAG-F2ESF9200, 38', 9200 gal

78 Beal Tanker; 42', 9500 gal

75 Timpete Tank Pup; 22', 4400 gal

SALVAGE UNITS: 75 Trailmobile Tanker; 39', 9000 gal; 84 Spartan Tank Pup; 22', 5450 gal; 85 Clough Tank Pup; 22'5, 5400 gal

79 Fruehauf Tanker; TAG-F2ESF9200, 38', 9200 gal

78 Beal Tanker; 42', 9500 gal

75 Timpete Tank Pup; 22', 4400 gal

SALVAGE UNITS: 75 Trailmobile Tanker; 39', 9000 gal; 84 Spartan Tank Pup; 22', 5450 gal; 85 Clough Tank Pup; 22'5, 5400 gal

79 Fruehauf Tanker; TAG-F2ESF9200, 38', 9200 gal

78 Beal Tanker; 42', 9500 gal

75 Timpete Tank Pup; 22', 4400 gal

SALVAGE UNITS: 75 Trailmobile Tanker; 39', 9000 gal; 84 Spartan Tank Pup; 22', 5450 gal; 85 Clough Tank Pup; 22'5, 5400 gal

79 Fruehauf Tanker; TAG-F2ESF9200, 38', 9200 gal

78 Beal Tanker; 42', 9500 gal

75 Timpete Tank Pup; 22', 4400 gal

SALVAGE UNITS: 75 Trailmobile Tanker; 39', 9000 gal; 84 Spartan Tank Pup; 22', 5450 gal; 85 Clough Tank Pup; 22'5, 5400 gal

79 Fruehauf Tanker; TAG-F2ESF9200, 38', 9200 gal

78 Beal Tanker; 42', 9500 gal

75 Timpete Tank Pup; 22', 4400 gal

SALVAGE UNITS: 75 Trailmobile Tanker; 39', 9000 gal; 84 Spartan Tank Pup; 22', 5450 gal; 85 Clough Tank Pup; 22'5, 5400 gal

79 Fruehauf Tanker; TAG-F2ESF9200, 38', 9200 gal

78 Beal Tanker; 42', 9500 gal

75 Timpete Tank Pup; 22', 4400 gal

SALVAGE UNITS: 75 Trailmobile Tanker; 39', 9000 gal; 84 Spartan Tank Pup; 22', 5450 gal; 85 Clough Tank Pup; 22'5, 5400 gal

79 Fruehauf Tanker; TAG-F2ESF9200, 38', 9200 gal

78 Beal Tanker; 42', 9500 gal

75 Timpete Tank Pup; 22', 4400 gal

SALVAGE UNITS: 75 Trailmobile Tanker; 39', 9000 gal; 84 Spartan Tank Pup; 22', 5450 gal; 85 Clough Tank Pup; 22'5, 5400 gal

79 Fruehauf Tanker; TAG-F2ESF9200, 38', 9200 gal

78 Beal Tanker; 42', 9500 gal

75 Timpete Tank Pup; 22', 4400 gal

SALVAGE UNITS: 75 Trailmobile Tanker; 39', 9000 gal; 84 Spartan Tank Pup; 22', 5450 gal; 85 Clough Tank Pup; 22'5, 5400 gal

79 Fruehauf Tanker; TAG-F2ESF9200, 38', 9200 gal

78 Beal Tanker; 42', 9500 gal

75 Timpete Tank Pup; 22', 4400 gal

SALVAGE UNITS: 75 Trailmobile Tanker; 39', 9000 gal; 84 Spartan Tank Pup; 22', 5450 gal; 85 Clough Tank Pup; 22'5, 5400 gal

79 Fruehauf Tanker; TAG-F2ESF9200, 38', 9200 gal

78 Beal Tanker; 42', 9500 gal

75 Timpete Tank Pup; 22', 4400 gal

SALVAGE UNITS: 75 Trailmobile Tanker; 39', 9000 gal; 84 Spartan Tank Pup; 22', 5450 gal; 85 Clough Tank Pup; 22'5, 5400 gal

79 Fruehauf Tanker; TAG-F2ESF9200, 38', 9200 gal

78 Beal Tanker; 42', 9500 gal

75 Timpete Tank Pup; 22', 4400 gal

SALVAGE UNITS: 75 Trailmobile Tanker; 39', 9000 gal; 84 Spartan Tank Pup; 22', 5450 gal; 85 Clough Tank Pup; 22'5, 5400 gal

79 Fruehauf Tanker; TAG-F2ESF9200, 38', 9200 gal

78 Beal Tanker; 42', 9500 gal

75 Timpete Tank Pup; 22', 4400 gal

SALVAGE UNITS: 75 Trailmobile Tanker; 39', 9000 gal; 84 Spartan Tank Pup; 22', 5450 gal; 85 Clough Tank Pup; 22'5, 5400 gal

79 Fruehauf Tanker; TAG-F2ESF9200, 38', 9200 gal

78 Beal Tanker; 42', 9500 gal

75 Timpete Tank Pup; 22', 4400 gal

SALVAGE UNITS: 75 Trailmobile Tanker; 39', 9000 gal; 84 Spartan Tank Pup; 22', 5450 gal; 85 Clough Tank Pup; 22'5, 5400 gal

79 Fruehauf Tanker; TAG-F2ESF9200, 38', 9200 gal

78 Beal Tanker; 42', 9500 gal

75 Timpete Tank Pup; 22', 4400 gal

SALVAGE UNITS: 75 Trailmobile Tanker; 39', 9000 gal; 84 Spartan Tank Pup; 22', 5450 gal; 85 Clough Tank Pup; 22'5, 5400 gal

79 Fruehauf Tanker; TAG-F2ESF9200, 38', 9200 gal

78 Beal Tanker; 42', 9500 gal

75 Timpete Tank Pup; 22', 4400 gal

SALVAGE UNITS: 75 Trailmobile Tanker; 39', 9000 gal; 84 Spartan Tank Pup; 22', 5450 gal; 85 Clough Tank Pup; 22'5, 5400 gal

79 Fruehauf Tanker; TAG-F2ESF9200, 38', 9200 gal

78 Beal Tanker; 42', 9500 gal

75 Timpete Tank Pup; 22', 4400 gal

SALVAGE UNITS: 75 Trailmobile Tanker; 39', 9000 gal; 84 Spartan Tank Pup; 22', 5450 gal; 85 Clough Tank Pup; 22'5, 5400 gal

79 Fruehauf Tanker; TAG-F2ESF9200, 38', 9200 gal

78 Beal Tanker; 42', 9500 gal

75 Timpete Tank Pup; 22', 4400 gal

SALVAGE UNITS: 75 Trailmobile Tanker; 39', 9000 gal; 84 Spartan Tank Pup; 22', 5450 gal; 85 Clough Tank Pup; 22'5, 5400 gal

79 Fruehauf Tanker; TAG-F2ESF9200, 38', 9200 gal

78 Beal Tanker; 42', 9500 gal

75 Timpete Tank Pup; 22', 4400 gal

SALVAGE UNITS: 75 Trailmobile Tanker; 39', 9000 gal; 84 Spartan Tank Pup; 22', 5450 gal; 85 Clough Tank Pup; 22'5, 5400 gal

79 Fruehauf Tanker; TAG-F2ESF9200, 38', 9200 gal

78 Beal Tanker; 42', 9500 gal

75 Timpete Tank Pup; 22', 4400 gal

SALVAGE UNITS: 75 Trailmobile Tanker; 39', 9000 gal; 84 Spartan Tank Pup; 22', 5450 gal; 85 Clough Tank Pup; 22'5, 5400 gal

79 Fruehauf Tanker; TAG-F2ESF9200, 38', 9200 gal

78 Beal Tanker; 42', 9500 gal

75 Timpete Tank Pup; 22', 4400 gal

SALVAGE UNITS: 75 Trailmobile Tanker; 39', 9000 gal; 84 Spartan Tank Pup; 22', 5450 gal; 85 Clough Tank Pup; 22'5, 5400 gal

79 Fruehauf Tanker; TAG-F2ESF9200, 38', 9200 gal

78 Beal Tanker; 42', 9500 gal

75 Timpete Tank Pup; 22', 4400 gal

SALVAGE UNITS: 75 Trailmobile Tanker; 39', 9000 gal; 84 Spartan Tank Pup; 22', 5450 gal; 85 Clough Tank Pup; 22'5, 5400 gal

79 Fruehauf Tanker; TAG-F2ESF9200, 38', 9200 gal

78 Beal Tanker; 42', 9500 gal

75 Timpete Tank Pup; 22', 4400 gal

SALVAGE UNITS: 75 Trailmobile Tanker; 39', 9000 gal; 84 Spartan Tank Pup; 22', 5450 gal; 85 Clough Tank Pup; 22'5, 5400 gal

79 Fruehauf Tanker; TAG-F2ESF9200, 38', 9200 gal

78 Beal Tanker; 42', 9500 gal

75 Timpete Tank Pup; 22', 4400 gal

SALVAGE UNITS: 75 Trailmobile Tanker; 39', 9000 gal; 84 Spartan Tank Pup; 22', 5450 gal; 85 Clough Tank Pup; 22'5, 5400 gal

79 Fruehauf Tanker; TAG-F2ESF9200, 38', 9200 gal

78 Beal Tanker; 42', 9500 gal

75 Timpete Tank Pup; 22', 4400 gal

SALVAGE UNITS: 75 Trailmobile Tanker; 39', 9000 gal; 84 Spartan Tank Pup; 22', 5450 gal; 85 Clough Tank Pup; 22'5, 5400 gal

79 Fruehauf Tanker; TAG-F2ESF9200, 38', 9200 gal

78 Beal Tanker; 42', 9500 gal

75 Timpete Tank Pup; 22', 4400 gal

SALVAGE UNITS: 75 Trailmobile Tanker; 39', 9000 gal; 84 Spartan Tank Pup; 22', 5450 gal; 85 Clough Tank Pup; 22'5, 5400 gal

79 Fruehauf Tanker; TAG-F2ESF9200, 38', 9200 gal

78 Beal Tanker; 42', 9500 gal

75 Timpete Tank Pup; 22', 4400 gal