

The Roundup

Phone (406) 433-3306
Fax (406) 433-4114
E-mail address:
info@roundupweb.com
www.roundupweb.com

Business Office:
Located at 111 West Main
Sidney, MT

Mailing Address:
P.O. Box 1207
Sidney, MT 59270

PRSR STD
U.S.
POSTAGE
PAID
The Roundup

ECRWSS
Postal Customer

Wednesday, December 5, 2018

Volume 44 • Number 43

THE ROUNDUP'S CHRISTMAS WISH BOOK

*Look inside this issue on
pages 5 & 6 for featured gift
items from local businesses!*

Long X Arts Foundation and Pioneer Museum to host Holiday Food, Wine and Art Event

The McKenzie County Long X Arts Foundation and the Pioneer Museum of McKenzie County is excited to host the 2nd Annual Holiday Food, Wine and Art Event, Saturday, December 8 from 6:30-9:00 p.m. at the Rough Rider Center in Watford City.

Grab a friend and enjoy Pride of Dakota food and wine samplings from the Pioneer Museum while professional artist Jessica Newman (from Sidney's MonDak Heritage Center) guides you through the steps to make your own glass holiday ornament.

The event will take place after the Rough Rider Center's Christmas Fest in the main concourse where guests will enjoy the décor of donated Christmas trees for the festival's fundraiser.

Fee is \$35 per person, which includes ornament and food and wine samplings. Additional supplies and ornament construction can be purchased the day of the event if you'd like.

Register online at longxarts.com/holiday-food-wine-and-art.html or call Jessie at 701-770-8659.

Rough Rider Center Christmas Fest Dec. 8

On December 8th, visit the Rough Rider Center for their Christmas Fest from 12 to 5 p.m. CST. The event is family oriented and Christmas focused. A vendor show will be set up on the lower concourse, with a special "Maker's Corner", for those local artists and vendors who make their own products. Pictures with Santa will be available, with photos available for purchase. Kids can craft their letter to Santa, and deliver it to the big, on-site mailbox. Other activities include bounce houses in the fieldhouse, and swimming and skating. Skate rentals are \$4. Concessions will be open, and crafts for kids will be available. There will be a snowman and Christmas tree auction, decorated and donated by local businesses and groups. Half of the proceeds will be donated to the Food Pantry to make Christmas meal boxes for families in need. The auction will run from 2:00 to 4:30 p.m., with winners announced at 4:45 p.m. To donate a tree or snowman, or to setup a vendor table, contact Elise at 701-842-3665 extension 1132. Entrance to the event is \$20 per family, grandparents not included, or \$5 per person for families of less than 4.

Time to Order Trees

Richland County Conservation District is currently accepting tree orders for spring 2019 delivery. If you are interested in planting a wind break, shelterbelt or living snow fence contact the local conservation district for assistance. Order forms are available from the conservation office. The district has a wide variety of trees available and various sizes also. Call Julie at 433-2103 x3001 to receive an order form or to place an order.

Gifts From The Heart Distribution Dec. 8

The Richland County Christmas Coalition is pleased to announce that the annual "Gifts from the Heart" gift distribution for those in need is scheduled for December 8, 2018. The event will once again be held at the Masonic Temple (on Main, across from the Courthouse) in Sidney. The hours for the distribution will be from 7 a.m. until 1 p.m. and recipients will be allowed to choose gifts for a child that resides full time in their home and is under the age of 18. Recipients must be residents of Richland County.

The Gifts from the Heart program also provides food bags along with gift distribution. The goal is to provide every family with all the ingredients to make Christmas Dinner too!

Now is the time to begin keeping an eye out for gifts to donate. Many good buys can be found locally and Christmas will be here before we know it. Unwrapped toy donations can be dropped off at any local Edward Jones offices. Hats & mittens can be donated at any Richland County financial institution. Money donations can be taken to Stockman Bank or contact Jakkie Waller for pick up.

If you or your group would like to assist in setting up, food sorting or being shopper assistants, please call or text Jakkie at 406-480-9117.

Please remember, we ask that children DO NOT accompany the parent or guardian during the shopping experience.

Whoppers Come To Sidney!



Burger King, Sidney's newest business is now open for business at 416 N. Central at the Shops at Fox Run from 6 a.m. to 11 p.m. daily.

Sidney was chosen for their newest restaurant because of the excellent location on Highway 200. There are also plans for expansion into Williston. Burger King is based out of Ogden, Utah and is owned by Dave Harper, Meridian Restaurants Unlimited, LC. Harper's mission is "LOVE, positively impact peoples lives everyday".

Director of Operations, Jen Dirk from Mandan, ND has been here every week since the building's construction began. She runs all Burger Kings in North Dakota and 15 in Minnesota. Dirk has been with the company 25 years. Stacy Leidy, District Manager of the stores between Sidney, MT and Aberdeen, SD, has also been here and will oversee the operations of this store. Our motto is "Go The Extra S.M.I.L.E. (Simple Moments Impact Lives Everyday)" stated Dirk. The company uses this motto to keep up morale and provide great service.

The general manager of the Sidney restaurant, Jen Stauffer, with two assistant managers Michelle Judd and Brenda Jones, had week-long training sessions in Dickinson and Bismarck. 55 employees are ready to serve up Burger King's famous food but they are looking to hire more.

Burger King recently donated cookies and coffee to the Polar Plunge, held on Nov. 23. The Polar Plunge is a fundraising event to benefit Montana Special Olympics. One of their managers has a child who is in Montana Special Olympics. They plan to continue to contribute to more fundraisers in the future.



Pictured are Jen Dirk, director of operations; Jen Stauffer, general manager; and Stacy Leidy, district manager of Burger King in Sidney.

The new Sidney restaurant has many modern conveniences to enhance the customers experience including two self-order kiosks to make ordering and paying easy. Customers can keep their devices charged at the many USB ports at each table. For the younger customers, there is a large play land with equipment for the kids to enjoy. For customers of all ages, there is an interactive projection area featuring many games.

Burger King is planning a grand opening in the coming weeks which will feature a bike giveaway for kids. To enter the contest, children can turn in a colored page with what they liked best about their visit. In addition, they plan to have face painting and give away decorated Burger King crowns. Be sure to look in future editions of The Roundup for all the grand opening details.

Alexander Resident Creates Unique Agate Art

By Jaymi Loobey

Sandra LaRoque has always loved rock hounding, especially for Montana Moss Agates. Before his death, in 1983, Sandra's grandfather, Ervin Bottke, would make jewelry and belt buckles occasionally with cut and polished stone agate slabs from his rock hounding trips. Sandra calls this lapidary slabbing. She followed in her grandfather's footsteps and now sells her own agate creations. She does not make jewelry and belt buckles but her lampshades and sun catchers are just as beautiful. For about ten years, now, Sandra has been slabbing and polishing agates. "I made my first lampshade in 2007. My creative ideas grew from there," Sandra said. "It takes a lot of patience, many hours and a lot of time."

According to Sandra, Montana Moss agates are found in the Yellowstone River basin. They were formed millions of years ago by volcanic activity. Sandra says "Most people don't know what agates are but can understand when I say petrified wood." Agates are actually agatized logs and limbs from the sequoia trees that covered the land back then, just like petrified wood only to the point of becoming an agate. That would be a hardness of 7 to 8, while diamond is a hardness

of 10. There are also different grades of agate. They can have a low, medium or high grade with high being that they have more wood grain bands and they have more of what is called a scenery in them. After slabbing/cutting the agate in a lapidary rock saw that has a diamond tipped blade, Sandra puts the cut agate through four weeks of tumbling in four different grits of silicon carbide. Each batch gets rinsed and tumbled between a slightly rough grit and a fine polish grit until smooth and shiny. Sandra said, "To most people, an agate on the river bank looks like another



One of Sandra's trout suncatchers. (Photo by Sandra LaRoque)

rock. To collectors, we see that they aren't just a rock." More information on what an agate is can be found at <https://agate-montana.com/p/what-is-agate>. Sandra sells her pieces mainly through FB at this time or by others who have seen a piece someone bought. Her window sun catchers hearts and crosses sell for \$100. Her trout and walleye pieces go for \$275 and her lamps sell for between \$500 to \$3,000 depending on the size. She also does lamp shades with antlers incorporated into them and lighted fireplace mantelpieces.

Sandra was born in Williston, North Dakota. She grew up in Missoula, Montana and moved back to her grandparents' (Ervin and Jeanette Bottke) farm in Alexander, North Dakota in 1999. Her son, Payden LaRoque, is a junior at Alexander High School and helps hunt for agate too. Her parents, Gary and Margaret LaRoque, grew up in Alexander as well and graduated from Alexander High School when the Lewis & Clark Trail Museum was the school. Sandra LaRoque does not have a gallery yet for her pieces but her business, Rare Rock Agate Shop, has a Facebook page. A list and photos of her pieces for sale can be found at www.facebook.com/MontanaAgateInLight/. People who are interested in ordering a piece can connect with her on Facebook, call or text her at 701-770-1264. MNAXLP



Sandra LaRoque is an agate artist in Alexander, North Dakota. (Photo by Sandra LaRoque)



Pickup And Delivery Dates:
Sidney: Wednesday Only
Watford City: Wednesday & Saturday

Serving Watford City At Meyer's Department Store
200 N Main • 701-444-2906 | Mon-Fri: 10am - 6pm • Sat: 10am - 5pm
Serving Sidney At Big Sky Embroidery And Design
108 E Main • 406-433-7679 | Mon-Fri: 10am - 5pm

DRY CLEANING | SHIRTS & JEANS STARCH | WELDERS STARCH
1129 2nd Ave W • Williston, ND | 701-572-3734 | www.willistondrycleaners.com
Mon-Fri: 8am - 6pm • Sat: 9am - 3pm

Check Our Facebook For Weekly Menu or Changes

Book Your Holiday Parties Now!
Sunday Breakfast Buffet 8am-1pm



Kat's Kitchen
123 3rd St SW • Sidney, MT
406-630-2608 • Check Us Out On



Register to win a
\$2500
gift card
To be given away each day through December 23rd



Pizza • Burgers • Beer • And More
Free Ice Cream!
Fairview, MT • 406-742-5180
Open Tues-Fri at 4:30 pm • Sat & Sun at 2 pm

We believe every child deserves a successful future!



We can help you start or expand a high quality child care and education program

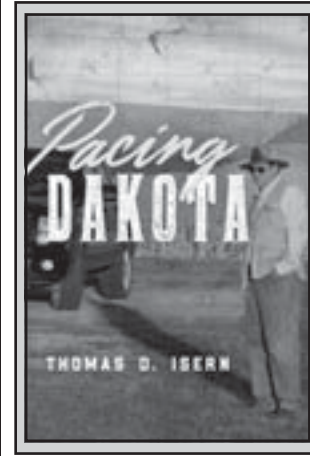
Contact Family Connections today!



STARS to Quality
FamilyConnectionsMT.org

BOOKTALK
AND
SIGNING
Thurs, Dec 6th • 3-7pm

Booktalk with reading and song at 4pm and 6pm
Book for sale at the Gift Shop!
Pride of Dakota Refreshments served!



New from NDSU Press,
PACING DAKOTA
by Thomas D. Isern
Pacing Dakota speaks with the voices of a historian, an outdoorsman, a culinarian, a Lutheran, and a farmboy. Thomas prowls churches, finds artifacts, and gathers stories from Williston to Wahpeton and beyond in an effort to speak for a generation born and raised on the Great Plains of North America.



PIONEER MUSEUM
of McKenzie County
100 2nd Ave, Watford City, ND • Open 10am – 5pm

STATISTICS

LAKE WATER LEVEL REPORT
Sakakawea
Current Elevation.....1840.2
Last Week's Elev.....1840.9
One Year Ago.....1841.4
Release For Day (C.F.S.).....25,000

SIDNEY WEATHER DATA
Source: MSU Eastern Agricultural Research Center

Date	High	Low	Precip.
November 26.....	25.....	21.....	0.00
November 27.....	36.....	21.....	0.20
November 28.....	46.....	30.....	0.00
November 29.....	44.....	27.....	0.00
November 30.....	38.....	23.....	0.00
December 1.....	37.....	29.....	0.00
December 2.....	31.....	23.....	0.00
Total YTD Precipitation.....		14.88	

OBITUARIES

Steve Chris Ler, 67 Savage, MT

Funeral services for Steve Ler, 67, of Savage, MT were held at 10 a.m., Saturday, December 1 at First Lutheran Church in Savage, MT. Visitation was Friday, November 30 from 12-5 p.m. at Fulkerson-Stevenson Memorial Chapel in Sidney, MT and one hour prior to the funeral. Burial took place in Riverview Cemetery in Savage, MT. Fulkerson-Stevenson Funeral Home has been entrusted with the arrangements. Remembrances, pictures and condolences may be shared with the family at www.fulkersons.com.



Steve Chris Ler

Steve Chris Ler, was born October 15, 1951 in Sidney, Montana to Melvin and Vera Ler. He grew up and attended school in Savage, where he played sports and became an avid hunter and fisherman. In 1971, Steve joined the Army's Field Artillery (13B), where he served in Korea. He left the service with an honorable discharge. On August 9, 1975, he married Joann at St. Anthony's in Laurel, MT. They made their home in Savage, MT. After a 41-year career with The Savage Coal Mine, he retired.

Steve enjoyed most in life, going to all the sporting events his children participated in. Sometimes he would relive the recorded events in his basement years later. His hobbies included hunting, fishing, talking to friends, and taking his grandchildren for side-by-side rides.

Steve died at home, November 26 from natural causes. Steve is survived by: his wife, Joann Ler, Savage, MT; his son Bradley (Kelly) Ler, Pearland, TX and their children Kenzie, Miley and Brekken; daughter Christa (Paul) Lowery, Lockwood, MT and their children, Cadence and Padraic; daughter Jolyn Ler, Savage, MT and children Soulin, Liam and Aydin; son Braden Ler, Dickinson, ND and soon-to-come Baby Girl Ler; sister Mitzie (Bill) Haney, Billings, MT; and many nieces and nephews. Steve is preceded in death by his parents, Melvin and Vera Ler; his father and mother-in-law, Harold and Mary Fink.

James “Jim” Dishon, 65 Mesquite, NV formerly of Sidney, MT

Funeral services for James “Jim” Dishon, 65, of Mesquite, ND formerly of Sidney, MT were held at 2 p.m. Friday, November 30 at People's Congregational Church in Sidney with Pastor Neil Lindorff officiating.

Interment was at the Sidney Cemetery, Sidney, MT under the care of Fulkerson-Stevenson Funeral Home of Sidney. Remembrances, condolences and pictures may be shared with the family at www.fulkersons.com.

James “Jim” went to be with the Lord on Friday, November 23. Jim passed away doing what he loved near Mesquite, NV with his son, Trevor and wife, Donna by his side.

Ryland Christensen, 13 Sidney, MT

Funeral services for Ryland Christensen of Sidney, MT were held at 2 p.m., Saturday, December 1 at Shepherd of the Valley Lutheran Church in Sidney, MT.

Family service was Friday, November 30 at 5 p.m. at Shepherd of the Valley Lutheran Church in Sidney.

Fulkerson-Stevenson Funeral Home has been entrusted with the arrangements.

Remembrances, pictures and condolences may be shared with the family at www.fulkersons.com.

Ryland passed away Tuesday, November 27 at his home.

Chamber Christmas Cash Giveaway Rescheduled to December 21

The Sidney Area Chamber of Commerce and Agriculture congratulates the winners of the 2018 Christmas Cash Giveaway. Six local individuals won \$250 and \$500 prizes in Chamber Bucks on December 1 at noon during the live drawing at Reynolds, on Power 95 and the Chamber Facebook page. We thank ONEOK for sponsoring the Christmas Cash Giveaway and the Parade of Lights.

The Chamber was not able to finish the live drawing because the live radio feed ended, meaning people listening at home could no longer hear the drawing. As part of the Official Rules, Section 2, Eligibility, the Chamber has the discretion to terminate or suspend the contest at any time for any reason without notice. The Trade Promotion Committee of the Sidney Chamber will hold a special Christmas Cash Giveaway to award the \$1,000 in Chamber Bucks to a lucky member of the community. Please come to the Chamber between 8 a.m. and 4 p.m., Monday through Friday until December 21 at noon and fill out a special Christmas Cash ticket with your name and phone number to enter the Giveaway. We will draw one \$1,000 winner at 4 p.m. on Friday, December 21 live on the Chamber Facebook page and call the winner via phone after the drawing. You must be 18 or older to enter, one entry per person, no purchase necessary. All federal, state, and local laws and regulations apply.

Thank you for choosing to “Shop Sidney First” and supporting our Sidney businesses.

If you have any questions, please contact Chamber Staff, Madina McGlothorn or Susan Joy at 406-433-1916, info.chamber@sidneymt.com, or at 909 South Central Avenue in Sidney anytime between 8 a.m. and 4 p.m., Monday-Friday. Thank you Reynolds for hosting the Christmas Cash Giveaway, Power 95.1 for broadcasting, and ONEOK for sponsoring the Christmas Cash Giveaway.

Corrections

On page one of the November 28, 2018 edition of The Roundup the cutline under photo with the headline “Live Nativity” should be changed from the 18th annual parade of lights to the 19th annual parade of lights.

On page 1 of the November 28, 2018 edition of The Roundup in the story “Get Your Tan on With Good to Glow” the phone number should have been 406-478-0517.

MNAXLP

EVENTS
SEND US YOUR EVENTS!
THE ROUNDUP: PO Box 1207
111 West Main • Sidney, MT 59270
406-433-3306 • Fax: 406-433-4114 • Email: classads@esidney.com

RICHLAND COUNTY
Events in Sidney unless otherwise listed. MT Zone.
Wed., Dec. 5
10 a.m. - 4 p.m. - **The Falcon's Eye Nature Photographs** - This event will continue through Dec. 29. **Bandits & Heroes Poets & Saints** - Popular art of the northeast of Brazil. This event will continue through Jan. 7. **28th Annual Miniature Art Show** This event will continue through Jan. 12. Viewing is free and open to the public. MonDak Heritage Center, 120 3rd St. SE, Sidney, 406-433-3500. Tuesday-Friday, 10 a.m.-4 p.m.; Saturdays, 1-4 p.m.
4-5 p.m. - **Teen Craft Club** - Fun crafts and activities for the teens and preteen age range. Sidney-Richland County Library, 406-433-1917.
Thurs., Dec. 6
6 p.m. - **Bingo** - Sidney Moose Lodge. This event occurs every Thursday.
Fri., Dec. 7
10:30 a.m. - **Storytime** - Ages 2-5, finger plays, stories (bears) and crafts. Sidney-Richland County Library, 406-433-1917.
Sat., Dec. 8
7 a.m.-1 p.m. - **Gifts From The Heart Distribution** - Richland County residents with children (ages 0-18) who feel they are in need may participate. Masonic Temple (on Main Street, Sidney, MT across from the courthouse). Financial donations can be given at Stockman Bank. New and unwrapped items may be dropped off at the Masonic Temple Dec. 7 from 12-6 p.m.
9 a.m. - 4 p.m. - **Jingle & Mingle Craft & Vendor Show** - Over 40 crafts and vendors; food and bake sale, Santa from 11 a.m. to 4 p.m. Richland County Event Center, Sidney, MT.
Mon., Dec. 10
10:30 a.m.-11 a.m. - **Tales For Tots** - Come join us for early childhood games, book and crafts. Sidney-Richland County Library, 406-433-1917.
Thurs., Dec. 13
11:30 a.m. - **Richland Red Hatters Christmas Lunch** - Sidney Country Club. RSVP by Dec. 12. Call Sylvia, 798-3882 or Margaret, 488-4613.
Fri., Dec. 14
7 p.m. - **Sonido Brasil At The MonDak** - The band will blend Brazilian musical performances with discussions on the history of the Brazilian music. Free to attend, limited seating. MonDak Heritage Center, 120 3rd St. SE, Sidney, MT. For more information call 406-433-3500 or visit mondakheritagecenter.org.
Sat., Dec. 15
2-4 p.m. - **Santa Is Coming** - Come and visit and have your picture taken with Santa and Mrs. Clause. Join in some fun activities. Free event. Sidney Church of the Nazarene, 606 9th St. SW, Sidney, MT.
Mon., Dec. 17
7-8 p.m. - **Sidney City Council Meeting** - If a resident has a matter to discuss with City Council, contact City Hall to be put on the agenda. Public welcome. City Hall, 115 2nd St. SE, Sidney, MT. For more information call 406-433-2809.

McKENZIE COUNTY
Events in Watford City unless otherwise listed. CT Zone
Fri., Dec. 7
10:30 a.m. - **Tater Tot Time with Miss Sandy & Miss Val: Snowman/Winter** - For moms and their children ages infant to 4 years of age. Pioneer Museum of McKenzie County, 100 2nd Ave. SW, Watford City, ND. This event will also occur Dec. 14, Christmas Party; Jan. 4, New Year's Resolution and Jan. 18, Winter.
Sat., Dec. 8
10 a.m.-12 p.m. - **Decorate Pinecone Ornaments** - Free event, participants will be able to take home their ornaments. McKenzie County Public Library. Reserve your seat by calling 701-444-3785.
12-5 p.m. - **Christmas Fest** - Vendor show, pictures with Santa, letters to Santa, skating, inflatables, swimming, Christmas crafts for kids, concessions, Christmas tree and snowman auction. Rough Rider Center, Watford City, ND. For more information call 701-842-3665.
Mon., Dec. 10
Watford City Police Foundation Blue Santa Annual Christmas Fundraiser Deadline - Make donations to Watford City Police Foundation, PO Box 277, Watford City, ND 58854 or First International Bank & Trust.
Thurs., Dec. 13
11:30 a.m. - **Special Holiday Storytime** - Join us at the McKenzie County Public Library, Watford City, ND for a fun, magic and holiday-filled storytime. Free event for all ages. The stories are geared toward children between preschool and 2nd grade.
6 p.m. - **Johnson Corner Christian Academy Soup Supper & Sweets Auction** - Free will soup supper, live auction begins 7 p.m. Rough Rider Center, Watford City.

WILLIAMS COUNTY
Events in Williston unless otherwise listed. CT Zone.
Wed., Dec. 5 - Thurs. Dec. 20
Dress The Christmas Tree - Help the Missouri-Yellowstone Confluence Interpretive Center get their Christmas tree ready for the holiday by making a special “traditional” ornament to put on the tree. A special prize will be awarded. Ornaments must be submitted no later than Dec. 20. For more information call 701-572-9034 or email shsbuford@nd.gov.
Wed., Dec. 5 - Tues., Dec. 31
5:30-9:30 p.m. - **Holiday Lights Drive** - This event will continue through Dec. 31. Enjoy thousands of holiday lights in over 60 displays every evening. Entry fee \$5 per car. Spring Lake Park, Williston, ND. For more information call 701-774-9041.
Fri., Dec. 7, 4-8 p.m. & Sat., Dec. 8, 10 a.m.-2 p.m.
Christmas Stroll - Downtown Williston.
Sun., Dec. 9
1-5 p.m. - **Christmas At The Confluence** - The Lisenbees, 1:15 p.m.; Sidney Brass, 2 p.m.; Greg Hager, 3 p.m. Bring the kids to see Santa. Refreshments, everyone welcome. Missouri-Yellowstone Confluence Interpretive Center. 701-572-9034.
Mon., Dec. 10
5-7 p.m. - **Birth Place Grand Opening** - Entire community welcome. Refreshments, appetizers, tours of the birth place on the second floor, guest speakers and special commemorative items. The entire community is welcome to join in the celebration! CHI St. Alexius Health Williston, ND.
Fri., Dec. 14
9 a.m.-4 p.m. - **Confluence Quilters Monthly Meeting** - All experience levels invited and instruction provided. Bring your own lunch and unfinished projects. This event continues on Dec. 15. Missouri-Yellowstone Confluence Interpretive Center. 701-572-9034.
Thurs., Dec. 20
7 p.m. - **Confluence History Book Club** - Join history buffs in a discussion of this month's selected book. Free refreshments. Please call in advance, 701-572-9034. Missouri-Yellowstone Confluence Interpretive Center.

DAWSON COUNTY
Events in Glendive unless otherwise listed. MT Zone
Thurs., Dec. 6
6-8:15 p.m. - **Monthly Trivia Night** - Entry fee \$10 per team. Up to 7 teams of 4 can compete. Cross Country Brewing, Glendive, MT. The Friends of the Library will receive a \$1 from the sale of every pint of beer and the entry fees collected. Preregister your team by 5:45 p.m. by calling 406-377-2739 or 406-939-4634.
Fri., Dec. 7
10 a.m.-2 p.m. - **Christmas Bazaar & Luncheon** - United Methodist Church, 206 W. Towne St., Glendive, MT. For more information call 406-377-5678.
Sat., Dec. 15, 9 a.m.-6 p.m. & Sun., Dec. 16, 10 a.m.-4 p.m.
“Last Chance Gift Show” - Stop by to get your last minute Christmas shopping done. Food will be served. Santa coming Dec. 16, 12-4 p.m. Moose Lodge, Glendive, MT. For more information call Barb Polette, 406-377-3602.
Wed., Dec. 19
12-1 p.m. - **Lunch ‘n’ Learn “Ringing In The Holidays With A Cappella Harmony”** - Join the Red Top Singers, as they sing in the season with four-part a cappella harmony. Tea and coffee will be provided, bring your own lunch. Glendive Public Library Community Room. For more information visit <http://tinyurl.com/prgkapr>.

Christmas at the Confluence This Sunday

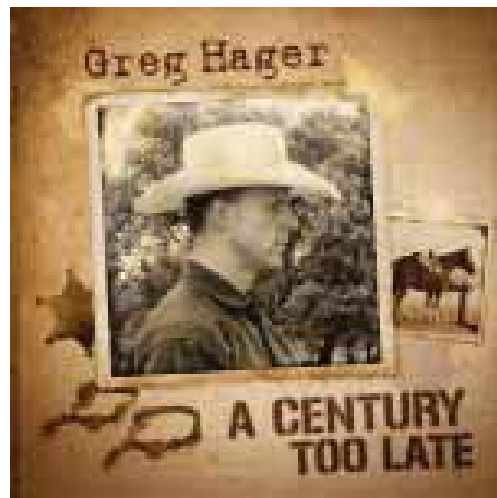
Spend a delightful afternoon at one of the prettiest spots in the area as the Missouri Yellowstone Confluence Center hosts its annual Christmas get together Sunday, December 9 from 1 to 5 p.m. CST.

Enjoy refreshments, crafts and a visit with Santa plus some great music. Entertainment starts at 1:15 p.m. with the Lisenbee family, followed by Sunrise Brass at 2.

Greg Hager, Pro Cowboy Entertainer of the Year from North Dakota, is the featured entertainment, beginning at 3 p.m. Hager, from rural Valley City, ND is a well known western artist who composes original music that he says "Makes heart and mind connections to encourage, challenge and entertain." In his lengthy singing career, he has become known as a performer who is real and relatable, valuing country roots and recognizing opportunities to make a difference in the world through music. From haunting melodies and thoughtful lyrics to memories of happy days, the music is both a romantic and real perspective of western life.

Hager has released seven CDs of his original music. Visit www.greghager.com for more information or to purchase a CD.

The Entertainer of the Year Award is presented annually to the individual or group who showed the most overall success in the music industry during the prior calendar year.



Make HIS Christmas Special!

CINCH

- Jackets • Shirts up to 3XLT
- Jeans up to 40" waist & 37" inseam
- Vests • Pullovers

American HAT COMPANY, INC.

Dress & Casual Clothing by *Tommy Bahama*

SAXX UNDERWEAR CO.

STONEWALL KITCHEN

sts RANCH

POWDER RIVER OUTFITTERS

PANHANDLE

ARIAT

for all mankind

And More!

Gift Baskets For Men

Free Gift Wrap • Gift Cards Fit Everyone • Big Bucks Welcome

113 E. Main ST • Sidney, MT

406-433-5050

Holiday Hours:
Mon-Sat: 8am - 6ish pm • Sun: 1-4pm

JZ Fashion & Coffee Boutique

CITY BREW

YEAR-END CLOSEOUT

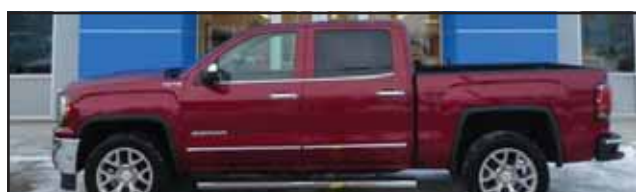
ON ALL NEW 2018 & 2019 VEHICLES!
 "UNBELIEVABLE PRICES ON ALL MAKES & MODELS"



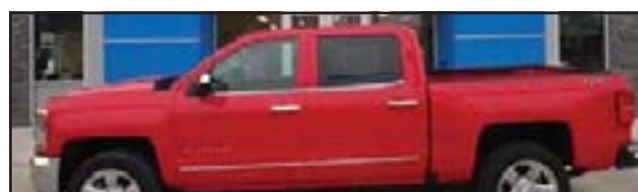
2018 GMC Sierra 1500 Elevation Edition | stk# 293801
 MSRP\$51,290
 Incentives & Discounts.....-\$11,132
Sale \$40,158*



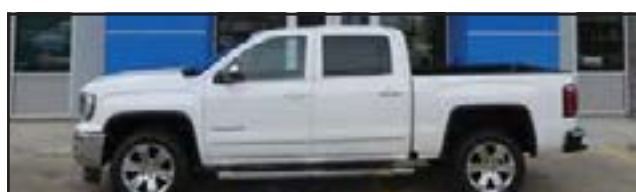
2018 Chevy Silverado 1500 | stk# 525626
 MSRP\$49,555
 Incentives & Discounts.....-\$11,486
Sale \$38,069*



2018 GMC Sierra 1500 Premium Package | stk# 569455
 MSRP\$53,635
 Incentives & Discounts.....-\$10,733
Sale \$42,902*



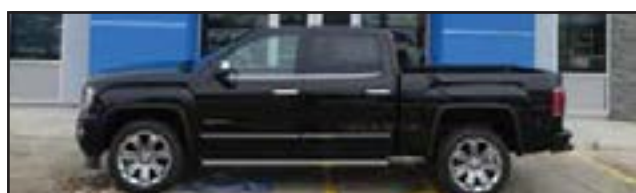
2018 Chevy Silverado 1500 | stk# 385573
 MSRP\$54,910
 Incentives & Discounts.....-\$12,065
Sale \$42,845*



2018 GMC Sierra 1500 Premium Plus Package | stk# 613392
 MSRP\$55,810
 Incentives & Discounts.....-\$10,928
Sale \$44,882*



2019 Chevy Equinox | stk# 187860
 MSRP\$32,835
 Incentives & Discounts.....-\$5,288
Sale \$27,547*



2018 GMC Sierra 1500 Denali Ultimate | stk# 609446
 MSRP\$64,570
 Incentives & Discounts.....-\$11,527
Sale \$53,043*



2018 Chevy Tahoe Premier | stk# 182045
 MSRP\$75,280
 Incentives & Discounts.....-\$10,926
Sale \$64,354*



2019 Buick Enclave Avenir | stk# 189289
 MSRP\$59,840
 Incentives & Discounts.....-\$6,386
Sale \$54,454*



2019 Chevy Corvette Z06 | stk# 602548
 MSRP\$103,635
 Incentives & Discounts.....-\$7,037
Sale \$96,598*



Gem City MOTORS

*See Dealer For Details

703 S. CENTRAL • SIDNEY, MT | WWW.GEMCITYMOTORS.COM | 406-433-3120



The project is in the preliminary design phase and is expected to be ready for construction by 2022.

10% off

Interior Work

(for bids finalized by the end of 2018)



• Pools • Hot Tubs • Garage Floors • Basements
• Rec & Show Rooms • Entrances • Foyers

CONCRETE TRANSFORMATION | 406-488-1733

Cracked, uneven, pitted, damaged, or just ugly? We can cover it!

Jingle & Mingle
Craft & Vendor Show
Sat, Dec 8th • 9am - 4pm

Over 40 Crafts/Vendors
Food & Bake Sale provided by Brodie Gorder Memorial
& Santa will be visiting from 11am - 1pm

Richland County Fair & Rodeo Event Center

12.08.2018
ROUGH RIDER CENTER

Christmas
FEST

VENDOR SHOW | PICTURES WITH SANTA
LETTERS TO SANTA | SKATING
INFLATABLES | SWIMMING
CHRISTMAS CRAFTS FOR KIDS
CONCESSIONS

CHRISTMAS TREE & SNOWMAN AUCTION



12-5PM, AUCTION IS FROM 2-4:30PM
WINNERS ANNOUNCED AT 4:45PM
\$20 PER FAMILY | \$5 PER PERSON
LOCATION: ROUGH RIDER CENTER
CALL 701-842-3665 FOR MORE INFO



REAL CHRISTMAS TREES


Artificial Trees Available Too • Ornaments • Lights & Bulbs • Lawn Decorations • Gift Wrap



We're Your Hometown Toro Dealer



**Check Out All Of Our
In-Store Specials For
Everyone On Your
Christmas Shopping List!**



**WATFORD CITY
LUMBER, INC.**

1504 4th Ave NE • Watford City, ND | www.acehardware.com



Monday - Friday:
7am - 7pm
Saturday: 8am - 5pm
Sunday: 12-5pm

THE ROUNDUP'S CHRISTMAS WISH BOOK

Hoover Carpet Cleaner
(Pictured left) Badlands Hardware
104 N. Main, Watford City
701-842-3321

Stockings
(Pictured right) Barrett Pharmacy
104 N. Main, Watford City
701-842-3321

2019 Chevy Corvette Z06
Gem City Motors
703 S. Central, Sidney
406-433-3120

Holiday Decor
Available at Johnson Hardware & Furniture
111 S. Central Ave., Sidney
406-433-1402

Antique Lamps
Larry Lynne Antiques
10 W. Broadway, Williston
701-572-3586

Under Armour Base Layers
Available at High Caliber Sports & C4 Athletics, 440 N. Central Ave., Sidney
406-433-1800

HOLIDAY COUPON SPECIAL

Bring in or mention this coupon when you spend \$50 or more and get:

\$5.00 off

Offer ends Dec 31, 2018

JACK & JILL.

701-842-2369
104 3rd Ave NE • Watford City, ND

OPEN ENROLLMENT 2018

If you need health insurance the time to enroll is coming up!

November 1st- December 15th!

Open enrollment is the time to get a new policy or make changes to your current policy without restrictions.

Please call to make an appointment to review the new plans and options for 2019.

UGA UNION GATEWAY AGENCY, INC.
309 2nd St NW, Sidney MT 59270
Phone: (406) 488-4366

BlueCross BlueShield of Montana

PacificSource

WILLISTON, ND HOLIDAY STROLL

FRI, DEC 7, 4-8PM & SAT, DEC 8, 10AM - 2PM

- Downtown Shopping
- Pictures with Santa
- Outdoor Smores
- Live Nativity Scene Every Hour By "Our Redeemers"
- Kids' Activities
- Strolling Carolers
- Ice Sculptures
- Deals, Specials & Giveaways
- Horse & Carriage Rides

A Distinct Variety For All Your Gifting Needs!

20% off

Entire Store
Fri, Dec 7, 4-8pm & Sat, Dec 8, 10am - 2pm
Serving Roughneck Coffee!

little muddy Gifts

Mon-Sat: 10am - 6pm • Sun: 1-5pm
4 West Broadway • Williston, ND | 701-713-4435

Stroll in and find that Perfect Antique for that Special Person on your list!

4-8pm Fri, Dec 7
10am - 2pm Sat, Dec 8

Register To Win
25% off
Any Single Purchase Thru December 31 With This Ad

Hot Cider & Goodies

Gift Certificates • Lay-Aways • Gift Wrapping

Larry Lynne Antiques
10 West Broadway • Williston | 701-572-3586

BOOK SIGNINGS!

FEATURING TWO GREAT ND AUTHORS
FRIDAY, DECEMBER 7TH • 4-8PM

Pacing Dakota
By Thomas D. Isern

Pickles The Dog
By Kat Socks

Warm up in our coffee bar during the stroll!

We give personal attention to special orders!
Holiday Hours: Mon-Fri: 10am-8pm • Sat: 10am-5:30pm • Sun: 1-5pm

Books On Broadway
12½ W. Broadway, Williston, ND | 701-572-1433 • Fax: 701-572-9657
Email us at bksbdwy@nemontel.net

Holiday Stroll

Free Cookie Decorating For Kids 12 & under
Fri, Dec 7 • 4pm Until Gone

Le Creuset Event

Fri & Sat Only
Exclusive In-Store Specials!

COOKS ON MAIN
for the everyday chef

Mon-Fri: 10am - 8pm • Sat: 9am - 6pm • Sun: 1-5pm
701-572-2665 | 224 Main St • Williston, ND | www.cooksmain.com

Stroll On In For The Perfect Gifts!

Bulova, Citizen & Obaku Watches **25% off**

Seiko & Pulsar Watches **50% off**

Rhythm of Love
Powered by her Heartbeat
starting at \$120

Solitaire Diamond Ring
1 Carat \$2,999

Diamond Studs
starting at \$149

1/4 ctw.... \$149
1/2 ctw.... \$499
3/4 ctw.... \$799
1 ctw..... \$999

Two-Stone Jewelry
starting at \$99

All Departments **20-50% off**

RITTER BROTHERS DIAMOND CUTTERS
www.ritterbrothers.com • Downtown Williston, ND
Mon-Fri: 10am - 6pm • Sat: 10am - 4pm | 572-2051 • 800-201-2051

Cooper & Thief Gift Packs

\$26⁸⁹

Perfect For The Holidays!



• Ice • Liquor • Wine • Pop • And More!

Mon-Thurs: 9am - 9pm • Fri: 9am - 10pm • Sat: 10am - 10pm
Highway 85 • Watford City (Long X Visitor's Center) | 701-444-3335



Get Them The Right Tools For The Job This Christmas



Houseware, Cookware, Cleaning Supplies, Tool Boxes, Tool Sets & Power Tools For The Garage & Kitchen In Stock & Special Order

BADLANDS HARDWARE

701-842-3321 • 104 N Main • Watford City, ND
Mon-Fri: 8am - 7pm • Sat: 9am - 6pm • Sun: 12-5pm



Dear Santa,
Please buy our gifts at
High Caliber Sports 'cause...

- ✓ Mom wants a Montana Silversmiths Necklace
- ✓ Dad wants a Remington Shotgun
- ✓ Bobby wants a Basketball & a Hockey Stick
- ✓ Susie wants an Under Armour Hoodie & Leggings
- ✓ Grandma wants Columbia Mittens
- ✓ Grandpa wants a Columbia Flannel Shirt
- ✓ Auntie wants some Huckleberry Syrup
- ✓ Uncle wants an Ice Fishing Rod & Reel

PS: They also have gift cards, free gift wrap & they accept Big Bucks!



440 N Central Ave • Sidney, MT • Shops at Fox Run | 406-433-1800
Mon-Sat: 9am - 6pm • Sun: 10am - 4pm

THE BIG TIRE EVENT

NOW THROUGH DECEMBER 31



\$70 Rebate Offer on select brand tires when a set of four is purchased. Additional \$70 Ford Service or Quick Lane Credit Card Rebate Offer when the entire purchase is on the card.

Low Price Tire Guarantee on all tires we sell. Up to 30 days after sale, we beat any valid competitor's pricing.

UP TO \$140⁰⁰ OFF

“THE WORKS” OIL CHANGE
\$39.95/Gas \$104/Ford Diesel

Eagle Country Ford

“Experience the Eagle Country Difference!”

215 East Main • Sidney, MT | 433-1810 or 1-800-482-1810 | eaglecountryfordsales.com

Check Out Our **WeatherTech®** Floor Liners in the parts Dept
Great Christmas Gift!



Toro Snowblowers

(Pictured left) Watford City Lumber Ace Hardware
1504 4th Ave NE, Watford City
701-444-3665



Custom Rims

Available at Western Tire
1601 S Central Ave, Sidney, 406-433-2358



Long X Growler

Long X Bottle Shop
100 2nd St SW, Watford City, 701-444-3335

Rolling Tool Box Stool

(Pictured right) Available at Farmer's Union Oil Co.
501 6th Ave SE, Watford City, 701-444-3639





Custom Treat Trays

Available at Jack & Jill
104 3rd Ave NE, Watford City, 701-842-2369



boma Earrings

Larsen Service Drug, Inc,
244 Main St N, Watford City
701-444-2410



Christmas Popcorn Bouquets

Available at Party Central
105 E Main St., Sidney, 406-433-4386



Waterford Crystal Giftware

(Pictured right) Ritter Brothers Diamond Cutters,
319 Main Street, Williston
701-572-2051



Homemade Pies

Available at Hometown Homemade
512 N Main St, Watford City
701-570-7911



ElectriSteer

Available at Tri-County Implement Inc.
2429 W. Holly St., Sidney,
406-488-4400

One Of A Kind Photos


(Pictured right) Yellowstone Marketplace
102 N. Central Ave., Sidney
406-489-7431





Rocky Mountain Outfitters Sweaters

Available at Barrett Pharmacy & Variety, 145 Main St N, Watford City
701-842-3311



Calendars Including Carl Larsson

Available at Books on Broadway, 12 1/2 West Broadway, Williston
701-572-1433



Custom Sports Apparel

(Pictured left) Available at Sonda's Solutions
2221 S Central, Sidney,
406-433-6757



Mud Pie Kid's Wear

Available at J's Fashion & Coffee Boutique
113 E. Main Street, Sidney
406-433-5050



little miss matched Doll & Socks

(Pictured left) Available at Beaver Creek Creations
228 Main St N, Watford City
701-495-2480

The Roundup Classifieds

Reach Over 21,000 Readers Each Week In Eastern Montana & Western North Dakota And Always On The Internet at roundupweb.com
(Paypal required for online purchases)

Add a photo to your classy online! (additional charge)

Now Taking Credit Cards! (5% charge added to all transactions)

Get Up To 30 Words For Just \$9.25 • Deadline: Monday noon

HELP WANTED
COOK & BARMAID
Competitive wages. Stop in or call, Hi-Way Lounge, Alexander, ND; 701-828-3100.

DENTAL HYGIENIST
Healthy Smiles Dental is looking for an energetic and motivated hygienist to join our team. Please drop off resume at 203 2nd Ave. SW, Sidney or email drthiessen@midrivers.com.

CARRIERS NEEDED
Need extra cash or want to get some exercise while getting paid? We have carrier routes available in several

parts of Sidney. 406-433-3306 or fill out application at The Roundup, 111 W. Main, Sidney.

FOR RENT
SMALL BUSINESS LOCATIONS
Downtown Sidney, \$500/mo., all utilities pd. Some rentals as low as \$200/mo. Four retail spaces available on main floor, 2 office spaces upstairs & 2 office spaces downstairs. Can be remodeled suit to fit. Measure approximately 400 sq. ft. Some spaces already designed to expand to additional spaces. It's

a great deal! Yellowstone Marketplace, 102 N Central Ave., Sidney. 406-489-1945 ask for Linda.

RV SPOTS FOR RENT
RV spots available in Lee's Trailer Court, Sidney, MT. \$550 per month includes water, sewer, garbage and electricity. 406-488-6636.

SERVICES
WELDING
Welding & repair work. No job is too small. Portable welder, reasonable rates. 701-444-2936.

AIRCRAFT BUYING, SELLING AND APPRAISALS
Aircraft buying, selling and appraisals! Call Sidney Air Service, Inc for sales and

acquisitions! Call 406-480-2024, ask for Barry.

PILOT SERVICE
You buy it we fly it. Single engine, multi engine, turbine. Aircraft management service also available. Call 406-480-2024, ask for Barry.

ROUND OR RECTANGULAR TABLES & CHAIRS FOR RENT
Parties, weddings, get-togethers. Ultimate Showdown Assoc. Located at Hefty Seed Co. South of Sidney, has tables & chairs for rent. Will deliver. Call 406-488-4338.

REAL ESTATE
THREE NEW ZERO STEP HOMES FOR SALE
The Best Price/Quality in the Bakken. No association, own

your lot and home, 2,000 sq. ft. per unit. \$274,000. Rauschendorfer Construction, 406-489-1880.

FARM & RANCH FOR SALE
Big round straw bales, 200 durum straw; 200 spring wheat straw. Can deliver. 701-770-0671.

FOR SALE
Bearcat 1260 grinder mixer with bale table and scale, needs gear box below mixing tank. Make offer. 406-963-2228.

REDMOND SALT, EQUILIX, EQUIPRIDE
Redmond natural salt in 50 lb. bags or 44 lb. blocks are in. Also for the best in horse products, Equilix in tubs and Equipride in bags and pails. Sidney Feeds. 406-480-2024 Barry; 406-480-0379 Joyce. Stoney Butte Feeds, Brockway; 406-485-2537 or 406-853-3551 Paul.

FOR SALE
Portable corral panel trailers. Continuous fence 5 bar or 6 bar 20 foot sections. Gates made out of 2" pipe. Corner post station braces. Call for more information, 701-770-2260.

VEHICLE FOR SALE
2002 CHEVY TAHOE
In good condition, has third row seat, 228,000 miles. Asking \$3,250. 406-742-8195.

FOR SALE
USED BOOKS
Hard cover books. Political, health, self help, religion, biographies, Readers Digest Select Editions, novels by famous authors & cookbooks, 50¢ each. Yellowstone Marketplace, 102 N Central Ave., Sidney.

WANTED
VACUUM CLEANER REPAIR PERSON
Hoover, Shark mainly. Contact Linda, 406-489-1945.

Lunch Menus!

Sidney School
Thurs., Dec. 6: Chicken nuggets, potatoes, gravy, pears, gelatin.
Fri., Dec. 7: Chili, cinnamon roll, apple juice.
Mon., Dec. 10: Hamburger gravy over potatoes, green beans, pears, dinner roll.
Tues., Dec. 11: Chicken fajitas hotdish, banana..
Wed., Dec. 12: Chicken fried steak, potatoes, gravy, corn, mandarin oranges.

Savage School
Thurs., Dec. 6: Hamburgers.
Fri., Dec. 7: No school.
Mon., Dec. 10: Sloppy joes.
Tues., Dec. 11: Christmas dinner.
Wed., Dec. 12: Taco tubs.

Rau School
Thurs., Dec. 6: Spaghettios with franks, green beans, peaches.
Fri., Dec. 7: Cheeseburger, soup, veggies, strawberries.
Mon., Dec. 10: Pork chops, potatoes, gravy, mixed veggies, fruit, bread.
Tues., Dec. 11: Lasagna, salad, pineapple, garlic toast.
Wed., Dec. 12: Chicken burger, tater tots, green beans, mandarin oranges.

Froid School
Thurs., Dec. 6: Pizza pasta, garlic bread, veggies, fruit.
Fri., Dec. 7: Fish patty on a bun, chips, veggies, fruit.
Mon., Dec. 10: Chili with shredded cheese, cornbread, fruit.
Tues., Dec. 11: Potato soup, ham sandwiches, veggies, fruit.
Wed., Dec. 12: Cheeseburger pie, smiley potatoes, veggies, fruit, dessert.

Bainville School
Thurs., Dec. 6: Meatball sub, chips, broccoli normandy, mixed berries.
Fri., Dec. 7: Chicken noodle soup, cheesy breadsticks, applesauce.
Mon., Dec. 10: Orange chicken, egg rolls, rice, stir fry veggies, pineapple.
Tues., Dec. 11: Italian chicken hotdish, garlic toast, carrots and celery, pears.
Wed., Dec. 12: BBQ pork riblets, tater tots, coleslaw, tropical fruit.

Richey School
Wed., Dec. 5: Cheeseburgers, peas, peaches, scotcharoos.
Thurs., Dec. 6: Chicken parmesan, fruit cocktail, carrots.
Fri., Dec. 7: Egg rolls, stir fry veggies, pears, fortune cookie.
Mon., Dec. 10: Super nachos, fresh veggies, pineapple.
Tues., Dec. 11: Hot dogs, macaroni and cheese, corn, mandarin

oranges.
Wed., Dec. 12: Chili, cinnamon rolls, applesauce.

Culbertson School
Wed., Dec. 5: Chicken drumsticks, mashed potatoes, gravy, fruit.
Thurs., Dec. 6: Pizza, salad, fruit.
Fri., Dec. 7: Chicken sandwich, smiley potatoes, fruit.
Mon., Dec. 10: Cheeseburger, tater tots, fruit.
Tues., Dec. 11: Macaroni and cheese, celery and carrot sticks, fruit.
Wed., Dec. 12: Corn dogs, baked beans, fruit.

Lambert School
Wed., Dec. 5: Hamburgers, tots, fresh veggies, fruit.
Thurs., Dec. 6: Chicken parmesan, rice, veggies, fruit.
Fri., Dec. 7: French dip, baked potato, creamed corn, apple crisp.
Mon., Dec. 10: Buffalo chicken bake, green beans, fruit.
Tues., Dec. 11: American hotdish, salad, fruit.
Wed., Dec. 12: Christmas dinner, ham, baked potato, corn, cherry cheese cake, buns.

Fairview School
Thurs., Dec. 6: Pork rib sandwiches, chips, baked beans, fruit, dessert.
Fri., Dec. 7: No school.
Mon., Dec. 10: Chicken tenders, tater tots, veggies, fruit.
Tues., Dec. 11: Sub sandwiches, chips, veggies, fruit, dessert.
Wed., Dec. 12: Personal pizzas, salad with ranch, fruit.

Watford City School
Thurs., Dec. 6: Meatballs with gravy, mashed potatoes, rolls, peas.
Fri., Dec. 7: Pepperoni hot pocket, corn, banana pudding.
Mon., Dec. 10: BBQ chicken, twice baked potato, scooby doo crackers, caribbean blend veggies.
Tues., Dec. 11: Chicken fajitas with all the fixings, vegetable blend, melon.
Wed., Dec. 12: Chicken noodle soup, cheesy breadstick, sliced pears.

Alexander School
Thurs., Dec. 6: Popcorn chicken bowl, mashed potatoes, corn.
Fri., Dec. 7: No school.
Mon., Dec. 10: Lasagna roll up, green beans, garlic breadsticks.
Tues., Dec. 11: Mini corn dog, chips with cheese.
Wed., Dec. 12: Finger steaks or chicken strips, mashed potatoes, carrots.

For Sale



2017 Custom Schults 16x76 manufactured home south of Richey, MT

3 bed/2 bath, Cemplank siding, max. insulation, high wind shingles, Magnum permanent foundation system, drywall, moisture/sound barrier, water softener, large shower, walk-in closet, upgraded kitchen cabinets, large island with stainless double sink, total electric home, deck & handicap ramp. Comes with like new shipping container & must be moved.
For more information: 406-979-5020 or garyguns68gp@gmail.com.

ICARE

Join our team! Job Opportunities

Admissions Receptionist	Extended Care continued
Ambulance Driver	Licensed Practical Nurse
Cancer Care Coordinator	Registered Nurse
Clinic RN or LPN	Foundation Fundraising Assistant
Dining Services	Lodge
Food Service Worker II	Food Service Worker Per Diem
Cook Per Diem	Lead Food Service Supervisor
Utility Dishwasher Worker	Resident Assistant
Environmental Services	Patient Accounts Representative
Housekeeper	Perioperative RN
ECF Housekeeper	Registered Radiologic Technologist
Laundry Worker	Senior Executive
Extended Care	Information Systems
Certified Nurse Assistant	Human Resources
Director of Nursing	

SIDNEY HEALTH CENTER
Exceptional Care for Life

TOP 100

BENEFITS: Health insurance • Generous paid leave • Competitive pension plan • Flexible spending accounts • Voluntary dental, vision, critical illness and accident insurance • Life and AD & D Insurance • Hospital and Fitness Facility Discounts

For additional information or to apply online, please visit our website or contact:
Human Resources • Phone: (406) 488-2571 • HR@sidneyhealth.org
216 14th Ave SW • Sidney, Montana

Visit Our Website at: www.sidneyhealth.org

NOW SELLING NEW AND USED TIRES
offering light mechanics as well

MAGNUM MOTORS
Williston, ND • 701-572-0114 • 770-6375

INSTALLED WINDSHIELDS FOR MOST MAKES AND MODELS

MAGNUM MOTORS
Williston, ND • 701-572-0114 • 701-770-6375

WE WANT YOUR FURNITURE OR HOUSEHOLD ITEMS
(that are in good shape)

AND WE'LL HAUL THEM TOO!

Tables, chairs, nightstands, lamps, patio furniture, parlor chairs, couches, loveseats, easy chairs, beds, cribs, end tables, small & large appliances, high chairs, toys for toddlers, bikes (all sizes), lamps, wall decor & more!



We can pick up or bring to our
"Used Furniture Thrift Store"
Inside the Yellowstone Marketplace
102 N Cental Ave • Sidney, MT • 406-489-7431

The Roundup AUTO TRADER

YOUR VEHICLE HERE!
Give some details about your vehicle. Is it gently used, or basically new?



For Info, Call: 123-456-7890
\$12,345 OR BEST OFFER

ONLY \$17 A WEEK!
If you run it for two weeks & it doesn't sell, we'll run it for two more weeks **FREE!**
classesads@esidney.com • (406) 433-3306 for details

THE BUSINESS ROUNDUP
REACH 26,500 READERS IN THE ENTIRE MONDAK REGION
406-433-3306 OR 800-749-3306 ~ info@roundupweb.com

GO TO WWW.ROUNDUPWEB/DIRECTORY FOR DIRECT LINKS TO COMPANY WEBSITES & LOCATIONS

\$25⁰⁰/WK

TIMBER AUTO BODY

COMPLETE AUTO BODY • SAND BLASTING WINDSHIELDS • ROCK CHIPS • FIBERGLASS • INTERNAL COATING
From compact cars to big rig vehicles, bring it in! We'll work on it!

2004 12th St SE • Watford City, ND • PO Box 592 • 701-444-2834

DOORBUSTN
Portables & Septic Service, LLC

Office: (406) 433-7586
Fax: (406) 433-7596
Service: (406) 489-0915 • Troubleshooting

PO Box 1003 / 34980 Hwy 23, Sidney, MT

- Portable Toilet Rentals
- Septic Pumping & Installation
- Jetting Frozen Sewer Lines
- Pump Repair & Replacement
- Snake Jobs
- Camera-Locate Sewer Lines
- Pipe Burst Sewer Lines (eliminates digging up entire yard)
- Troubleshooting

Signs OF SIDNEY

Signs • Banners Vehicle Lettering Vinyl Letters Location Signs Decals
with High Tack Option

224 6th St. SW, Sidney • 406-433-2476 • signsofsidney@midrivers.com

Customer Service is Our #1 Priority

BORDER STEEL AND RECYCLING, INC.

Farm & Ranch, Oil Field & Construction Materials, Fencing Supplies, New Steel, Pipe, Aluminum & Stainless

Sidney: 35002 CR 123 • 406-433-7737
Glendive: 2703 W. Towne St. • 406-377-4398
Plentywood: Hwy 16 East • 406-765-2624

Williston: 13896 W. Front St. • 701-572-5493
Miles City: 12 Peggy Lane • 406-874-7428

HOSE ASSEMBLIES WHILE YOU WAIT

MFCP MOTION & FLOW CONTROL PRODUCTS, INC.

Fluid Connectors - Industrial Hose - Seals
Hydraulics - Pneumatics - Automation
Filtration - Racor - Instrumentation

Parker Store

406.433.1590
After Hours 406.478.3116
Fax 406.433.1589

SIDNEY, MT
205 2nd Ave NE
WWW.MFCPPINC.COM

SAFETY

NICK JONES REAL ESTATE REALTOR'

TRUCK ROUTE SOUTH, SIDNEY
OR CONTACT ONE OF OUR AGENTS:

JUSTIN JONES 406-480-9525
DENNIS WICK 406-480-1550
JERRIAN FRANZEN 406-478-3773
KRISTIN LARSON 406-480-5139 HOME: 798-3115

WWW.NICKJONESRE.COM

Lions Club Donates Bench and Plaque to Veterans Memorial Park in Sidney



Parks and recreation director Stephanie Ridl (left) with Lions Club member George Biebl.

The Sidney Lions Club donated a bench and plaque at Veterans Memorial Park as part of the “Take Part in the Park” project. The club also issued a challenge to other clubs, businesses and organizations to contribute part or all of the funds needed to purchase a bench.

Arranged in front of the pavilion, the new benches are anchored in concrete and provide excellent viewing of activities on the stage. Parks and recreation director Stephanie Ridl stated that 17 more benches need to be funded, since more are able to fit than previously anticipated. Although the full cost of a bench with plaque is \$1150, any dollar amount is welcome, and your donation is tax deductible. \$40,000 has been raised so far which Ridl says is “pretty awesome!” She said that it has been about a 50/50 split between businesses and memorials from family and friends.

Visit City Hall, 115 2nd St., S.E., Sidney for more information or to donate.

Greytak Calendars Available Now

The popular Don Greytak calendars are available now at area financial institutions, just in time for Christmas giving.

Calendars are \$15 each, with all proceeds going to benefit Montana 4-H youth. Included in each calendar are three raffle tickets for a chance to win a leather bound book of almost 30 years of Greytak calendars.

GLOW

powered by

JAFRA

ROYAL JELLY

Mention this ad & receive

10% off

Diana Youngquist - Independent Skin Care Consultant
Home: 406-798-7754 • Cell: 406-489-3368 | diayoung@outlook.com

Good To Glow

— Mobile Spray Tanning —

Meagan Dotson | 406-478-0517

At Temple Tattoo Gallery
(108 S Central • Sidney, MT)

Or In Your Home

LIVE POKER NIGHTLY

Starting 5pm at the

RODIRON

406-433-3300

520 N. Central Ave • Sidney, MT

EXCELLENT SERVICE WHILE YOU PLAY!

SAVE \$20

On A \$100 Buy-In

Must present this coupon. Limit 1 per person, per night.

BOUQUETS FOR ALL HOLIDAYS

Open Mondays 'Til Christmas



406-433-4386
www.partycentralandpopcorn.com
Tues - Thurs: 11am - 5pm
Fri: 10am - 5:30pm • Sat: 10am - 3pm
105 East Main • Sidney, MT

Save On Gift Bouquets!
A Price To Fit Your Budget

\$250 Large Bouquets
\$150 Small Bouquets

Many Selections To Choose From!
FREE delivery in Sidney City Limits.

- Elegant holiday tableware
- Pre-order popcorn balls
- Treat size popcorn bags
- Caramel popcorn
- Candied holiday flavors
- Savory popcorn flavors

White Elephant Gifts!

SHIPPING NOW
Business Gift Packages Available
Order Treat Size Popcorn Bags

Christmas Toys For All Ages!

Prices Range From \$4 to \$600,000

Big or Small!

TRI-COUNTY IMPLEMENT, INC.
2429 W HOLLY STREET • SIDNEY, MT 592709213
406-488-4400 | tri-cnty.com

All rights reserved. Case IH is a registered trademark of CNH America LLC.

Check Out The Yellowstone Marketplace This Holiday Season

“Sidney’s Most Interesting Hometown Mall”

Hats & Handmade Scarves
\$4⁰⁰ each

Hundreds of Holiday Ornaments
Priced as low as **\$1**

Digital Art by local artisans
1/2 Price

Agate & Silver Jewelry
Starting at **\$8**

FUDGE & ICE CREAM
Free Sample Tasting!

Get a 1/2 pound box of fudge for just **\$10⁹⁹**

Antiques Galore!

We Accept Credit Cards

YELLOWSTONE Marketplace 102 N Central Ave • Downtown Sidney
Mon-Sat: Noon - 6pm | 406-489-1945

families and businesses like you. Your generosity will be recognized in several different ways as listed on the next page. Thank you in advance for your consideration of making a tax-deductible donation in any amount.



On Wednesday, Nov. 28 the Rau Elementary School was presented with two checks each for \$2,500, one from Stockman Bank and the other from the Dayton Foundation to go towards purchasing new playground equipment. Back row (L-R) Garth Kallevig, Stockman Bank; and Rau School PTO members and students, Sarah Foss, Aubree Whiteman, Hannah Whiteman, Amy Stordahl, Kree McNally, Stacey McNally and Jerrian Franzen; middle, Ella Whiteman, Sofia Dicken-Dietrich, Addison Foss, Hazen Foss, Jacob Stordahl, Cye Franzen. Front: Brynlee McNally.



Dash away to Billings.

'Tis the season to connect with family and friends on a fast flight from Northeastern Montana to Billings and beyond. Enjoy the holidays, and the ride.

\$29*
from each way



Havre

Glasgow

Wolf Point

Sidney

Glendive

Billings



Cape Air
Enjoy the ride.

capeair.com 800-CAPE-AIR

*Including all taxes and fees. Fares are subject to availability and other conditions. Fares may change without notice, and are not guaranteed until ticketed.

I'll Be Home For The Holidays



GLOBALSTAR
SATELLITE PHONE



SPOT GEN3®
GPS MESSENGER



SPOT TRACE®
THEFT-ALERT, TRACKING, ASSET RECOVERY



**ADVANCED
COMMUNICATIONS**

SAVED BY
spot



Globalstar

Just North of McDonald's • Sidney, MT
406-433-1659 • Toll Free: 1-866-433-1659

CHECK OUT OUR GREAT GIFT IDEAS!



Toys, Games & Puzzles!

- Candles & Diffusers
- Fragrances
- Russell Stover • Gift Cards
- Huge Assortment of Decor
- Greeting Cards • Jewelry
- Toys • Furniture • Men's Gifts
- Protein Drinks & Supplements
- Women's Apparel & Accessories



HUGE Assortment Of Unique Gifts!

Barrett Pharmacy & Variety

145 Main • Watford City, ND • 701-842-3311

SHOP SIDNEY

Winners Shop In Sidney
Win a \$50 Gift Certificate
 Each Week 'Til Christmas
 Register At The Sidney Firms Listed On This Page

The Lucky Winners Are:
 Week 1 Stacy Potts
 Week 2 ... Katalin Cammilleri
 Week 3
 Week 4
 Week 5
 Week 6
CONGRATULATIONS!

But Wait... There's More
Get a 0% Big Bucks Loan
of \$500 - \$1000
Big Bucks Welcome At These Stores:

		
Miller's Corner	Pelfer's General Store	Path
		
Sidney Eye Care	John Stockhill Jewelers	Reynolds Market
		
J'z Fashlons	Eagle Country Ford	Trl-County Implement
		
High Callber Sports & C4 Athletics	Reese & Ray's IGA	1st Choice Collision Center

Open A Montana Medical Savings Account Before Dec. 31 And Save About \$242 On Your 2018 Montana Income Taxes

Have you had any medical expenses in the year 2018 that weren't covered by your health insurance policy, a flexible spending account (FSA), or your Federal Health Care Savings Account (HSA)? If so, you can still open a Montana Medical Care Savings Account (MSA) by Dec. 31 and cover those expenses. If you deposit up to \$3,500, (the maximum in 2018) you can reduce your Montana adjusted gross income by that amount. For individuals who have a taxable income above \$17,900, this will result in a net savings of about \$242.

This is really a good deal for Montanans! Thank your legislators. Yet, in past years only 1.4 percent of Montanans have taken advantage of this opportunity. When I ask why, many explain that they were told they were ineligible because they don't have a high deductible health insurance policy. WRONG. You do not have to be in a high deductible health insurance plan to be eligible for an MSA. And, unlike an HSA, you are still eligible to contribute to an MSA when you are age 65 years or older. Others say they have never heard of a Montana MSA. Believe it or not these accounts have been around since 1997.

The income tax advantage of depositing into a Montana MSA does not apply to your federal income taxes and should not be confused with the Federal Health Savings Accounts (HSAs) or Federal Flexible Spending Plans (FSAs).

If you do not use any of the money deposited in your MSA during the year it was deposited, it remains in the account and earns interest that is free from Montana income taxation. The money in the MSA then can be used for eligible medical care expenses in future years.

If you have already paid your 2018 medical bills either by check, cash, or credit/debit card, you can still add up those eligible expenses, make a deposit by December 31 and reimburse yourself from the MSA account on the same day for eligible expenses paid January through December.

The key word is paid. You can reimburse yourself for paid eligible medical expenses by the end of 2018. But if you haven't yet paid those bills because your health insurance company hasn't sorted out what it will pay and what you still owe, you still can reimburse yourself for those unpaid eligible expenses

during 2019 when you pay them.

The amount you can use to reduce your Montana income is the total deposited, not the amount used for medical expenses during the tax year. For example, if you deposited \$3,500 in an MSA but only used \$500 for eligible medical expenses during 2018, you still get to reduce your income by \$3,500. The remaining \$3,000 is available for paying medical expenses in future years.

You can use your MSA funds to pay medical expenses not only for yourself, but also your spouse, parents, dependents and anyone else. Let me repeat that last part...you can use your MSA fund to pay for eligible medical expenses of ANYONE... your best friend, a colleague who needs the money, anyone except your dog. Again, thank your legislators for this provision passed in 2017.

Your MSA can also be used as a legacy. Some Montanans have put money in their MSAs every year, but have not used it because they are saving the funds for long term care expenses. Others plan to use their MSA as a legacy for their children and grandchildren. You can place a payable on death (POD) designation on your MSA, identifying who you want to receive the money after your death. Your spouse, parents and kids can then use the money for their own eligible medical expenses without Montana income tax consequences.

During this season of giving, parents and grandparents may want to gift money to their adult children and adult grandchildren for an MSA. Whatever amount is gifted and deposited in an MSA can be taken off the adult children and grandchildren's income. The adult grandkids get the tax break, but not the grandparents.

An MSU Extension MontGuide will help you decide if you would benefit from a Montana medical care savings account. The publication (MontGuide 199817 HR) can be downloaded free <http://msuextension.org/publications/FamilyFinancialManagement/MT199817HR.pdf>

A copy can also be obtained from your local County or Reservation Extension office or by emailing goetting@montana.edu.

Marsha A. Goetting is the MSU Extension Family Economics Specialist in Bozeman. She deposited \$3,500 for her MSA in November and will withdraw over \$1,000 for eligible medical expenses that weren't covered by her FSA or health insurance policy.

GET YOUR ORDERS IN NOW FOR
CHRISTMAS

Desserts, Pies,
Cookies, Breads, &
Other Baked Goods!

Hometown Homemade, LLC

512 N Main St • Watford City, ND | 701-570-7911 | hometownhomemade@gmail.com

TOYS, TOYS FOR GIRLS & BOYS!

We have a great selection of Melissa & Doug toys!

Wooden Project Workbench

Luke & Lucy Twin Baby Doll Set

Beaver Creek Creations
228 N Main ST • Watford City, ND | 701-495-2480
Mon-Fri: 10am - 5:30pm • Sat: 10am - 4pm
www.facebook.com/beavercreekcreations

Christmas Roundup!

New Jewelry Sets
Bracelets
Earrings
Watches

Great Western Christmas Ideas!

- Montana Silversmiths • Tack • Elk Skin Gloves
- Stampede & Sagebrush Cologne For Men
- Western Horseman Books
- Weatherproof Warm Horse Blankets
- Headstalls, Breast Collars, Hay Nets

All Saddles On Sale:
Barrel Race, Team Rope, Trail Ride & Youth
• Gift Certificates • Free Gift Wrap

We are like a good Horse
We aim to please

Williston Saddlery

4½ miles west on Hwy 2 • Williston, ND | 701-572-2267

Richland County Health Department Achieves National Accreditation

Sidney, Montana — The Richland County Health Department announced today that it has achieved national accreditation through the Public Health Accreditation Board (PHAB). The national accreditation program works to improve and protect the health of the public by advancing and ultimately transforming the quality and performance of the nation's state, local, Tribal, and territorial public health departments. The Richland County Health Department is one of fewer than 200 health departments that have thus far achieved accreditation through PHAB since the organization launched in 2011.

"We are excited to be one of the smallest health departments in the country to be accredited. The department staff dedicated 3 years to achieving this honor not only for our department but the entire county", said Judy LaPan, Department Administrator. By achieving accreditation, "Richland County Health Department is demonstrating increased accountability and credibility to the public, funders, elected officials and partner organizations with which we work."

The national accreditation program, jointly supported by the Centers for Disease Control and Prevention and the Robert Wood Johnson Foundation, sets standards against which the nation's nearly 3,000 governmental public health departments can continuously improve the quality of their services and performance. To receive accreditation, a health department must undergo a rigorous, multi-faceted, peer-reviewed assessment process to ensure it meets or exceeds a set of quality standards and measures.

The Richland County Health Department has worked tirelessly for 3 years to ensure the systems, policies and programs were in place to best meet the health needs of our community. This included working through the Communities in Action process to develop the Community Health Assessment and the County Strategic Plan, and working with various stakeholders and community members, as well as our staff and coalition members.

Additionally, the department developed a comprehensive management system that provides a structure for measuring our performance in all aspects of the public health services we provide. A quality improvement process was included to ensure that the department maintains a high standard in the services provided. "By continuing to improve our services and performance, we can be sure we are meeting the public health needs of those we serve as effectively as possible. The bottom line is that we have the capacity, along with our partners, to create an environment where all residents of Richland County can be healthy and enjoy the highest quality of life."

"The Richland County Health Department joins the growing ranks of accredited health departments in a strong commitment to their public health mission," said PHAB President and CEO Kaye Bender, PhD, RN, FAAN. "The peer-review process provides valuable feedback to inform health departments of their strengths and areas for improvement, so that they can better protect and promote the health of the people they serve in their communities. Residents of a community served by a nationally accredited health department can be assured that their health department has demonstrated the capacity to protect and promote the health of that community."

The Richland County Health Department joins Missoula, Gallatin, Lewis and Clark, Cascade, Yellowstone and Flathead Counties in becoming accredited.



Could you use some help feeding your family?

The *Special Supplemental Nutrition Program for Women, Infants and Children* is a public health program designed to help families with young children. WIC provides:

- good food to feed your children
- tips to help your family eat well and stay healthy
- breastfeeding support

You may qualify for WIC if you are:

- Pregnant
- Breastfeeding
- Less than Six Months Post Partum
- Recovering From A Pregnancy Loss That Occurred In The Last Six Months
- A Parent/Guardian Of A Child Less Than Five Years Old

Family Size	Annual Income	Monthly Income
1	\$22,459	\$1,872
2	30,451	2,538
3	38,443	3,204
4	46,435	3,870

CALL 406/433-2207

Montana WIC
WIC is an equal opportunity provider.

TIRE & WHEEL PACKAGE

10% off

Through December 31st

TOYO TIRES **Hankook** **Firestone**

CUSTOM WHEELS BY THESE AND MORE!

WRX **FUEL** **DROP STARS** **ti5**

We Do More Than Just Tires: Brakes • Shocks • Struts • Alignments

WESTERN TIRE

Straight Talk • Honest Service • Fair Prices
1601 S Central • Sidney, Montana | 406-433-3858
Monday - Friday: 7am - 5:30pm • Saturday: 7am - 12pm



Yellowstone Chiropractic Clinic

(406)-433-4757 222 2nd. Ave. SW
1-866-433-4757 Sidney, MT 59270

Dr. Ryan Laqua
Chiropractic Physician &
Certified Medical Examiner



• Sports Injuries • DOT Physicals
• Personal Injuries & Pain Conditions

Upcoming Programs At The Confluence Interpretive Center

WILLISTON, N.D. – The public is invited to these upcoming events at the Missouri-Yellowstone Confluence Interpretive Center (MYCIC) near Williston. All events are free and open to the public. All times are Central Time.

Dec. 9: Christmas at the Confluence, 1-5 p.m. Local artists will begin performing at 1:30 p.m., and featured artist Greg Hager will perform at 3 p.m. Visitors can create their own craft projects with the provided materials, and refreshments will be served. Free will donation.

Dec.14-15: Confluence Quilters, 9 a.m.-4 p.m. Join the Confluence Quilters at their monthly meeting. All experience levels invited and instruction provided.

Dec. 20: Confluence History Book Club, 7 p.m. Join his-

tory buffs in a discussion of this month’s selected book. Free refreshments.

Dec. 24-25: Closed.

For more information, contact Kerry Finsaas or Debbie Crossland at 701-572-9034. The Missouri-Yellowstone Confluence Interpretive Center is part of Fort Buford State Historic Site managed by the State Historical Society of North Dakota. Missouri-Yellowstone Confluence Interpretive Center hours: Wednesday-Saturday, 9 a.m.-4 p.m.; Sunday, 1-5 p.m. CT. Fort Buford is closed for the winter.

For more information about additional upcoming programs of the State Historical Society of North Dakota, go to history.nd.gov/events.



SHARING MONEY IS OVERRATED.

Protect Your Debit Card With CardProtect.

CardProtect is a suite of services powered in part by CardVale®.



Instantly lock and unlock your debit card



Set and remove spending limits



Confirm or deny a transaction via a two-way text alert.



Limit transactions to a certain area using your phone’s GPS



Security alerts when suspicious activity is detected



CARDPROTECT

Montana’s Brand of Banking

CardVale® is a registered trademark of Fiserv, Inc. Member FDIC | Equal Housing Lender

THE PERFECT CHRISTMAS GIFTS!

DeWalt • Milwaukee • Skil • Black & Decker • Performance Tool



Power Tools, Hand Tools, Tool Chests, And More!



• Die Cast Toys • TY Animals • Sleds • Russell Stover Chocolates

• Snow Shovels • Hand Plows • Portable Heaters

• Thermoses • Cookware • Household Appliances

• Men & Women’s Outerwear

• Boots • Flashlights

• Large Selection of Tools

• Countertop Kitchen Appliances



Farmers Union Oil Co.
of Watford City, ND

501 6th Ave SE • Watford City, ND
5am - 10pm Daily • 701-444-3639





COMMITMENT. CARE. SERVICE.

The Good Shepherd Home offers this and more!

We are welcoming new residents to our brand new state-of-the-art facility in Watford City, ND. We have both private and couples rooms available that are equipped with many amenities for your comfort, including:

- Private, handicap accessible bathrooms.
- Television and cable.
- Fully furnished with 48-inch wide hi/low beds, dresser, armoire, nightstand, end tables and chairs.
- Individual thermostat control for individual comfort.

Residents can gather in one of three community rooms to socialize. Each community room features a gas fireplace and plenty of seating for family and friends. Residents can also take advantage of kitchenettes available for their own use, or enjoy meals from the state-of-the-art kitchen in the community dining room. The residence also has an outdoor courtyard with seating. There is also a tub room with a walk-in spa bathtub and towel warmers for leisure, rest and relaxation.

Call Sarah Skarda at 701.444.2331 for more information.

709 4th Ave NE, Watford City, ND • 701-444-2331 • McKenzieHealth.com



We Make Christmas Personal!

Order Your Embroidery & Vinyl Early For Christmas Gifting!

- Spirit Wear For All Richland County Sports
Scarves, Hats, Socks, Gloves & More
- Baby Wear
- Gift Bags
- Backpacks
- Can Coolers
- Oilfield Clothing Of All Kinds



Check Out Our Christmas Specials!

Mon - Fri: 6am - 6pm
Sat: 8am - 1pm

2221 S. Central, Sidney
406-433-6757

