

# The Roundup

Phone (406) 433-3306  
Fax (406) 433-4114  
E-mail address:  
info@roundupweb.com  
www.roundupweb.com

Business Office:  
Located at 111 West Main  
Sidney, MT

Mailing Address:  
P.O. Box 1207  
Sidney, MT 59270

PRSRT STD  
U.S.  
POSTAGE  
PAID  
The Roundup  
  
ECRWSS  
Postal Customer

Wednesday, November 13, 2019

Volume 45 • Number 40

## Watford City Christmas Events Approaching

By Anna Dragseth

Christmas time is approaching and so are Christmas events in Watford City. This year there will be a Parade of Lights, a Magical Medora Christmas Show, Christmas Fest, and a Vintage Ceramic Christmas Tree Class.

On Friday, November 29, Watford City's annual Parade of Lights will start on Main Street at 6:30 p.m. and wrap up around 8 p.m. with a fireworks show. There will also be an art show from 5 to 9 p.m. in the Gallery of First International Bank, a Christmas tree lighting, and a free ornament-making activity for kids to participate in.

The Watford City Chamber of Commerce is looking for local businesses and nonprofit organizations to decorate and enter floats for the Parade of Lights; for more information, you can contact the Watford City Chamber of Commerce at 701-570-5084.

On Wednesday, December 4, The Magical Medora Christmas event will take place at the Watford City High School at 7:30 p.m. The event is a family-friendly Holiday Show put on by five legendary Medora performers. This traveling holiday favorite from Medora will feature Badlands stars of the past and present and will deliver some of the season's best Christmas music and Christmas story to entertain attendees of all ages. To attend, you must buy a ticket which is \$30 per adult and free for anyone under the age of six years old.

On Saturday, December 7, The Rough Rider Center's Annual Christmas Fest will begin at 11 a.m. and wrap up around 4 p.m. At this event, there will be a Christmas Tree Auction, vendor show, pictures with Santa (12 to 3 p.m.), Letters to Santa activity, open skate and swim, bouncy houses, Christmas crafts for kids, and concessions. There is a \$5 charge per person to attend, and children two years and younger are free. Vendors interested in reserving a table for the vendor show can contact Shelly at shellyh@roughridercenter.com.

On Friday, December 13, at the Rough Rider Center, there will be a Vintage Ceramic Christmas Tree Class starting at 7 p.m. Jessica from the MonDak Heritage Center will be teaching the class and guiding attendees through the steps on how to create a unique ceramic Christmas tree. The fee to participate is \$65 per person. If you have any questions, you can contact Jessie at 701-770-8659.

## Fairview FFA Selling Wreaths, Memorial Boxes



Decorate your home or business beautifully this year and support a hard-working bunch of students. Fairview FFA students are again selling Christmas wreaths, either round or drop, plus memorial boxes which will all be ready in plenty of time for Christmas.

Wreaths are \$20. Memorial boxes are \$30 for a 16" or \$50 for a 32" box. If you purchased a box last year, return it in good condition for a \$10 credit towards your purchase. You even have choices of ribbon colors; red, blue, gold or silver.

Deadline to order is November 30. Visit the FFA booth at the Bazaar this Sunday or contact any of the FFA kids: Allyson Young, Ashley Karst, Becca Deming, Brady Buxbaum, Danielle Berry, Emily Sundheim, Gunnar Cayko, Hannah Sundheim, Jeremy McKay, Kenneth Olson, Kevin Lopez, Lauren Kjos or Rory Cozzens. Or call Vanessa Pooch, FFA advisor at 320-424-1480.

## Christmas Cash, Big Bucks, Sidney

The Christmas Cash campaign presented by ONEOK and the Big Bucks promotion started Friday, November 1, for shoppers in Sidney this holiday season.

Christmas Cash promotes "Shop Sidney First", by rewarding local shoppers with one red ticket for every \$20 spent at a participating Chamber business. Christmas Cash runs through the month of November. People can turn in their receipts at the Chamber office until 4 p.m. on December 6.

"Double ticket Saturday" will take place on Saturday, November 30, where shoppers will receive a double amount of tickets for their purchases. For example, a purchase of \$20 will result in receiving two tickets.

Chamber staff will host a live drawing of the red tickets for up to \$3,000 in Chamber Bucks on December 7, from 1-3 p.m. Attend in person, listen to Power 95 radio, or watch on the Sidney Chamber Facebook page to follow the live drawing.

Big Bucks holiday loans will be available at Richland Federal Credit Union, Yellowstone Bank and Stockman Bank for a fee of only \$15. Qualified applicants receive an interest-free loan for nine months for up to \$1,000. Participants can spend Big Bucks through December 24.

The Small Town Christmas including the Parade of Lights, presented by ONEOK, should be bigger than ever when Richland County kicks off the holiday season on Friday, November 29.

## INSIDE THIS ISSUE

***Fairview Bridge Lighting on pages 4A & 5A, Golden Roundup on page 7A***



## Hospice Is About Adding Quality To Life



**Jim Stoner and his wife Maxine with Jill Carpenter, Director of Visiting Nurse Services and Hospice at Sidney Health Center.**

November is National Hospice and Palliative Care Month, recognizing the professional team of caregivers who provide support to patients and their families despite a life-limiting illness. At Sidney Health Center, the Hospice team is comprised of a medical director, registered nurses, certified nurse assistants (CNA), social worker, chaplain, dietitian, pharmacists, and rehabilitation services including physical, occupational and speech therapists as well as community volunteers.

In the last three months, Sidney Health Center Hospice has served eleven patients including 215 in-home visits from the team of nurses, CNAs, social worker, chaplain, and family nurse practitioner – Jacqueline Free.

Among those receiving in-home care, is James Stoner, who suffers from Chronic Progressive Lung Disease (COPD) and emphysema. He and his wife, Maxine, are thankful for the services provided through Hospice. "It gives me a better route to medical information and managing my disease," states Jim.

As a previous Hospice volunteer, Maxine was aware of the services provided through the program and she had other family members who had utilized Hospice in other areas of the country. "Jim asked to go on Hospice several months ago as he got frustrated with constant doctoring and ER visits," stated Maxine. "Hospice offers a peace of mind for us as we have an on-call team at our disposal when his condition changes."

"Hospice is really about learning to live with being sick and accepting it," stressed Jim. "They keep a close eye on my status

and adjust the medication as needed. I have notes from the nurses and a binder with lots of information to better understand what I'm facing."

The nurse stops by their home once a week to monitor any changes related to medication or disease progression, ensuring that Jim is pain-free and comfortable. Hospice nurses must have critical thinking skills and be able to rapidly access a situation, and respond accordingly with a plan of action to restore comfort to the patients and their families. The nurses are available 24/7 and involved in the day-to-day care activities including symptom management, teaching medication administration to family members, and wound care as needed.

"Most patients are reluctant to receive Hospice care because they feel like they are giving up," states Jill Carpenter, Director of Visiting Nurse Services and Hospice at Sidney Health Center. "Hospice is really about making the most out of the life you have left by minimizing pain and keeping you comfortable."

The Hospice team meets every two weeks to review their patient care plans. The team provides not only symptom control and pain management, but also emotional and spiritual care to patients and their families. This high-quality care enables patients and families to focus on living as fully as possible despite a life-limiting diagnosis.

To learn more about Hospice and Palliative Care at Sidney Health Center, visit our website at <https://www.sidneyhealth.org/Services/Hospice> or by calling their office at 406-488-2138.

## The "I" In "Kind"



Richland Federal Credit Union, Culbertson branch, is displaying the letters K, N and D to help the Culbertson School JMG (Jobs for Montana Graduates) Program promote being the "I" in "Kind."

The public is encouraged to stop in at 18 2nd Street East in Culbertson and sign the letters to show their pledge to kindness towards others.

The anti-bullying program focuses on outward kindness rather than just being against bullying.

**Pictured left is Credit Union Member, Emma Pederson, making her pledge to be kind.**





**Pickup And Delivery Dates:**  
**Sidney:** Wednesday Only  
**Watford City:** Tues, Thurs & Sat

**Serving Watford City At Meyer's Department Store**  
200 N Main • 701-444-2906 | Mon-Fri: 10am - 6pm • Sat: 10am - 5pm

**Serving Sidney At Big Sky Embroidery And Design**  
108 E Main • 406-433-7679 | Mon-Fri: 10am - 5pm

**DRY CLEANING | SHIRTS & JEANS STARCH | WELDERS STARCH**

1129 2nd Ave W • Williston, ND | 701-572-3734 | [www.willistondrycleaners.com](http://www.willistondrycleaners.com)  
Mon-Fri: 8am - 6pm • Sat: 9am - 3pm



**Yellowstone Chiropractic Clinic**  
(406)-433-4757 222 2nd. Ave. SW  
1-866-433-4757 Sidney, MT 59270



**Dr. Ryan Laqua**  
Chiropractic Physician &  
Certified Medical Examiner

• Sports Injuries • DOT Physicals  
• Personal Injuries & Pain Conditions

**EAST FAIRVIEW SCHOOL**

**TURKEY BINGO!**

**THURSDAY, NOVEMBER 21ST • 7PM IN THE GYM**



**Bingo prizes include  
20 turkeys, bucket  
bonanza and lots  
of door prizes from  
local businesses.**

**Free will donation chili supper will also be served 5-6pm**

*Thank you for your continued support. It is very much appreciated.*

**Thank You**

We would like to extend a special thank you to all of our friends & relatives for all their words of sympathy & prayers during Russ's illness & death.

We would also like to thank pastor David Meehan for his participation in our family service, the nurses at Sidney Health Center & Cancer Care Center, Drs. Karanjai, Kessler, Vance, Pedersen & Kiehl & social workers Kay Johnson & Karen Truax for their special care.

– Linda Wells, Sheri Ressler, Kristi Kuylen,  
Jody Wells & families

**AREA RECOVERY GROUPS**

**MONDAYS:**  
**12 p.m.** — AA Monday Noon Group, Matthew House Office, 416 2nd St. NW, Sidney, MT.  
**1 p.m. - 3 p.m.** — Grief Reovery Support group at First Lutheran Church in the music room, Watford City.  
**6 p.m.** — Al-Anon Family Group Meeting, Trinity Lutheran Church Ed. bldg., 214 S. Lincoln Ave., Sidney.  
**8 p.m.** — AA Group, Northern Pump & Compression, Watford City. Call 770-3603 or 770-2675 for directions or ride. Hotline/Info 701-609-8663.

**TUESDAYS:**  
**7 p.m.** — AA Welcome Home Group, Sunny's Family Restaurant, 102 E. Main St., Sidney, MT, Central Avenue Entrance.  
**7 p.m.** — 24-hour Women's AA group meeting, Northern Pump & Compression, Watford City. Hotline/Info 701-609-8663.

**THURSDAYS:**  
**7:30 p.m.** — Al-Anon Meeting, Presbyterian Church, 316 4th Ave. NE, Watford City, ND.  
**8 p.m.** — AA Group, Northern Pump & Compression, Watford City. Call 770-3603 or 770-2675 for directions or ride. Hotline/Info 701-609-8663.

**FRIDAYS:**  
**6:30 - 7:30 p.m.** - 5 Stones - Faith Based Recovery meeting, Sidney First Church of the Nazarene, 606 9th St. SW, Back door is open.  
**8 p.m.** — AA Welcome Home Group, Sunny's Family Restaurant, 102 E. Main St., Sidney, MT, Central Avenue Entrance.

**SATURDAYS:**  
**7 p.m.** — AA Welcome Home Group, Sunny's Family Restaurant, 102 E. Main St., Sidney, MT, Central Avenue Entrance.  
**7 p.m.** — AA 24 group meeting, Northern Pump & Compression, Watford City. Hotline/Info 701-609-8663.

**SUNDAYS:**  
**7 p.m.** — AA Welcome Home Group, Sunny's Family Restaurant, 102 E. Main St., Sidney, MT, Central Avenue Entrance.

# OBITUARIES

## Marleen Skorpil, 78 Benson, AZ formerly of Cartwright, ND

Marleen passed away unexpectedly on October 15 after traveling to her winter home in Benson, Arizona. Dennis, her husband of 60 years, was by her side.

Marleen was born on April 2, 1941 to Frieda (Beyl) and Henry Dschaak, the middle child of 11 children.

Marleen attended high school at Fairview, Montana and married Dennis Skorpil on February 14, 1959. They made their home north of Cartwright and more recently, in Benson, AZ.

She was a delightful, intelligent lady with style and class. Regardless of the time of day, she would always be dressed for company. She loved playing Jeopardy and amazingly always seemed to know the questions to the answers. She would spend hours reading the encyclopedia, and more recently, reading Wiki on her cell phone.

She was a seamstress in her younger years, designing her own clothes and making doll dresses for her little sisters. Most recently, her talents were revealed in her scenic oil paintings.

Marleen was a breast cancer survivor of over 20 years. She loved her friends and family, enjoyed golfing, and especially loved dressing up as a dance hall girl with her friends in Benson, then dancing with them in Tombstone. Their picture is featured in one of the saloons there!

She is survived by her husband Dennis, son Kelly (Amber) Skorpil, grandchildren Alex (Tiffany) Walikonis, Ashley (Jory) Stevens, and Cole (Audrie) Skorpil, 2 younger sisters, 2 younger brothers, and multiple nieces and nephews.

She was preceded in death by her parents, her mother and father in law, 3 older sisters, 2 older brothers, 1 younger sister, her infant son (Randy), and her son Kenny.

Memorial Service for Marleen will be announced in the spring.

Memorial donations can be made to the American Breast Cancer Foundation.



Marleen Skorpil

## Jack H. Sorensen, 68 Ecuador, South America formerly of the Brorson Community

Memorial services for Jack H. Sorensen, 68, of Ecuador, South America formerly of the Brorson Community were held at 10 a.m., Saturday, November 9 at Fulkerson-Stevenson Memorial Chapel in Sidney with Pastor Nell Lindorff of the Peoples Congregational Church officiating.

Interment was in the Brorson Cemetery, under the care of Fulkerson-Stevenson Funeral Home of Sidney.

Jack passed away on Monday, October 14 in Ecuador, South America.

## McKenzie County Heritage Assoc. Meeting, Nov. 13, Watford City

To the members of the McKenzie County Heritage Association we will having our annual meeting on Wednesday, November 13, 7 p.m. at Pioneer Museum, 100 2nd Ave SW, Watford City.

## 2019 Annual Christmas Cookie Walk, Nov. 23, Sidney

The Lonsdale United Methodist Church and The Boys & Girls Club of the MonDak will be hosting the 2019 Annual Christmas Cookie Walk on Saturday, November 23 from 8-10 a.m. at 205 3rd Ave. SE, Sidney.

A filled box of Christmas themed cookies is \$20 each. The baked goods will be as marked. There will be a free Christmas Cookie decorating station for the kids.

For more information check them out on facebook @LonsdaleUMC or @bgcrc.

## Ag Producers Invited To Attend ARC/PLC Meeting In November


USDA Farm Service Agency (FSA) is hosting a local Farm Bill meeting on November 18, 2019 at 9:00 a.m. at the Richland County Extension Office located at 1499 N. Central Avenue in Sidney. The meeting is free and open to the public.

Meeting attendees will learn about FSA's Agricultural Risk Coverage (ARC) and Price Loss Coverage (PLC) programs authorized by the 2014 and 2018 Farm Bills. Learning more about ARC and PLC is important for producers who must make a decision about ARC or PLC election and enrollment options.

For more information about the meeting, please contact the local FSA office at (406) 433-2103, ext. 2. Persons with disabilities who require accommodations to attend or participate in this meeting should contact County Executive Director Tammy Lyseng at (406) 433-2103, ext. 2 or Federal Relay Service at 1-800-877-8339 by November 15, 2019.

## Signup For The Roundup

The Roundup offers free weekly mail delivery in Sidney, MT. If you have a Sidney mailing address and currently do not receive The Roundup newspaper at home (and would like to) sign up today! Stop by 111 West Main, call 406-433-3306 or send your name and address to us at either [classads@esidney.com](mailto:classads@esidney.com) or PO Box 1207, Sidney, MT 59270.



**SEND US YOUR EVENTS!**  
THE ROUNDUP: PO Box 1207  
111 West Main • Sidney, MT 59270  
406-433-3306 • Fax: 406-433-4114 • Email: [classads@esidney.com](mailto:classads@esidney.com)

**RICHLAND COUNTY**  
**Events in Sidney unless otherwise listed. MT Zone.**

**Wed., Nov. 13**  
10 a.m.-4 p.m. - **Laura Grace Barrett: State of Grace** - This event continues through Jan. 4, 2020. - **Beau Theige's Guitars** - This event continues through Jan. 12, 2020. Viewing is free and open to the public. MonDak Heritage Center, Sidney, 406-433-3500. Tuesday-Friday, 10 a.m.-4 p.m.; Saturdays, 1-4 p.m.

**Thurs., Nov. 14**  
12-1 p.m. - **Sidney Kiwanis Club Meeting** - Elks Lodge, 123 3rd St. SW.

**Sat., Nov. 16**  
9 a.m. - **Maximizing Alternate Feeds Farm Field Day** - Featuring guest speakers, Tim Fine and Evan Knutson. Meet at Wingate in Sidney at 9 a.m. Farm tour stops are Darrel Minow's and Lunderby's. Lunch provided. For more information call Hayley or Rachael, 406-488-1953.  
10 a.m.-4 p.m. - **Open Studio Saturdays** - Pricing ranges from \$10 to \$65 with all supplies included. For more information visit <http://mondakheritagecenter.org/events/open-studio-saturdays/>. MonDak Heritage Center, 120 3rd St. SE, Sidney, 406-433-3500.

12-2 p.m. - **Bryce Bennett, Montana Secretary of State Candidate Meet and Greet** - Rod Iron Grill meeting room.

**Sun., Nov. 17**  
Following worship - **Sidney Church of Christ Free Fellowship Thanksgiving Dinner** - Bible class, 10 a.m., worship, 11 a.m., 905 4th St. SW, Sidney.  
10 a.m.-8 p.m. - **Holiday Bazaar Craft Show & Fairview Lighting of Bridge** - Bazaar 10 a.m.-3 p.m., Fairview High School. Lighting of the Bridge Celebration starts at 5 p.m. at Sundheim Park. Fireworks at 7 p.m.

**Mon., Nov. 18**  
9 a.m. - **ARC/PLC Farm Bill Meeting** - Free and open to the public. Learn about FSA's Agricultural Risk Coverage and Price Loss Coverage programs authorized by the 2014 and 2018 Farm Bills. Richland County Extension Office, 1499 N. Central Ave., Sidney.  
6:30 p.m. - **Sidney City Council Meeting** - Public welcome. City Hall, 115 2nd St. SE, Sidney, MT. For more information call 406-433-2809.

**Tues., Nov. 19**  
11:30 a.m. - **Richland Red Hatters Lunch Meeting** - Sidney Country Club. RSVP by Nov. 17, call Sylvia, 798-3882 or Margaret, 488-4613.  
5:30 p.m. - **Board of Directors of Learning Volunteers for Adults-Richland County Meeting** - Regular board meeting to follow at 6:30 p.m. Sidney-Richland Library basement. Guest speaker, Kris Gifford.

**Thurs., Nov. 21**  
8-9 a.m. - **Chamber Board of Directors Meeting** - The meeting is open to the public. Sidney Chamber Office, 909 S. Central Ave.  
7 p.m. - **East Fairview School Turkey Bingo** - Free will donation chili supper will also be served 5-6 p.m. East Fairview School gym.

**Fri., Nov. 22**  
9 a.m. - 12 p.m. - **Senior Commodity Distribution** - Back door of the Nutter building, 123 W. Main, Sidney. For more information call 433-4353.

**Sat., Nov. 23**  
8-10 a.m. - **2019 Annual Christmas Cookie Walk** - Public event by Lonsdale United Methodist Church and Boys & Girls Clubs of the MonDak Richland Unit. 205 3rd Ave. SE, Sidney. Box of Christmas themed cookies \$20. Baked goods as marked, free Christmas cookie decorating station for kids.

**Sun., Nov. 24**  
5 p.m. - **Thanksgiving Service** - Lonsdale United Methodist Church, Sidney.

**Thurs., Nov. 28**  
2 p.m. - **Thanksgiving Dinner** - Free dinner, everyone welcome, Sidney Church of the Nazarene, 606 9th St. SW, Sidney. Help is always welcome, for more information call Pastor Evans, 406-488-1956 or Becky, 406-480-5634.

**Fri., Nov. 29**  
**It's A Small Town Christmas** - A Sidney Area Chamber of Commerce & Agriculture Event. - **8-10 a.m. - Breakfast with Santa** - Boys & Girls Club. - **9-11 a.m. - Cookies with Santa** - Reese & Ray's IGA. - **11 a.m.-2 p.m. - Reynolds Chili Cookoff** - Sign up at Reynolds Market customer service desk or send a message to Reynolds Market-Sidney Facebook page. Old fire hall. Prizes awarded - **1 p.m. - Polar Plunge** - Behind City Hall. - **2 p.m. - Movie with Santa** - Centre Theatre. - **2-4 p.m. - Parade of Trees** - Viewing from 2-3:30 p.m., auction 3:30 p.m. Boys & Girls Club. - **3 p.m. - Petting Zoo** - Restorx - **5:30 p.m. - Reynolds S'mores Stroll Stop** - Lot across from Restorx, while supplies last. - **6:30 p.m. - Parade of Lights** - Starts at Western Choice/Cenex parking lot along Central Ave. N to Reese & Rays IGA. - **Lower Yellowstone Chapter of Abate 25th Annual Toy Drive** - In front of Johnson Hardware in Sidney during Christmas Stroll selling sloppy joes, chips, hot cocoa and hot cider and homemade baked goods. If you donate a toy you can have the meal for free. There will be a drop off box for toys in Johnson Hardware and Furniture.

**McKENZIE COUNTY**  
**Events in Watford City unless otherwise listed. CT Zone**

**Wed., Nov. 13**  
10 a.m.-12 p.m. - **Art and Play by Long X Arts Foundation** - Make art while your kids play on the playground. Preregistration not necessary but helpful. Drop-ins welcome. \$5 recommended donation to Long X Arts Foundation. Rough Rider Center, Watford City, ND. For more information contact Jessie, 701-770-8659 or [longxart@gmail.com](mailto:longxart@gmail.com).  
7 p.m. - **McKenzie County Heritage Association Annual Meeting** - Pioneer Museum, 100 2nd Ave., SW, Watford City.

**Fri., Nov. 15**  
6:30 - 12 p.m. - **Alexander Public School Foundation Fall Harvest Night Out** - Dinner, auctions, live music, dancing. Alexander Fire Hall, Alexander, ND.  
7 p.m. - **Taylor Mason Concert** - Comedian, ventriloquist and musician. Watford City High School Theater Auditorium. For more information contact Jessie Scofield, 701-770-8659 or [longxart@gmail.com](mailto:longxart@gmail.com) or visit [longxarts.com/concert-series.html](http://longxarts.com/concert-series.html).

**Tues., Nov. 19**  
5 p.m. - **Turkey Bingo Time** - Supper, 5 p.m.; bingo, 6:30 p.m., Watford City Intermediate School.

**Sun., Nov. 24**  
12-2:30 p.m. - **Sons of Norway Lutefisk and Meatball Supper** - Watford City Civic Center, 213 2nd St. NE, Watford City.

**WILLIAMS COUNTY**  
**Events in Williston unless otherwise listed. CT Zone.**

**Fri., Nov. 15**  
9 a.m.-4 p.m. - **Confluence Sewing & Quilting** - Learn to create interchangeable placemats. Bring your own lunch. This event continues on Nov. 16. Missouri-Yellowstone Confluence Interpretive Center. 701-572-9034.

**Sun., Nov. 17**  
3 p.m. - **Sunrise Brass Concert at the Confluence** - Free admission. Missouri-Yellowstone Confluence Interpretive Center. 701-572-9034.

**Wed., Nov. 20**  
8:30 a.m.-2:30 p.m. - **Career Expo** - Teach high school students about your career. Williston High School Gym, Williston, ND. For more information call 701-572-0967.


**Thurs., Nov. 21**  
7 p.m. - **Confluence History Book Club** - Discuss this month's selected book "Pioneer Doctor: The Story of a Woman's Work" by Mari Grana. Free refreshments. Missouri-Yellowstone Confluence Interpretive Center. 701-572-9034.

**Fri., Nov. 29**  
6 p.m. - **25th Anniversary Holiday Lights Parade** - Silver Bells theme. Main Street, Williston, ND.

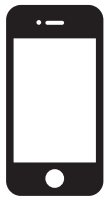
**DAWSON COUNTY**  
**Events in Glendive unless otherwise listed. MT Zone**

**Sat., Nov. 16**  
7-8:30 p.m. - **Glendive for Bennett: Meet & Greet** - Sen. Bryce Bennett, Candidate for Secretary of State will talk about his plan to make our democracy accountable to the people of Montana. 306 Lyndale St., Glendive, MT.

**Thurs., Nov. 28**  
8 a.m. - **Turkey Trot for 5K or 10K Run** - Registration 8 a.m.; race starts 9 a.m. at the EPEC, Glendive. Blue Devils fundraiser with a portion of the proceeds donated to the Dawson County Food Bank.



**MOBILE FRIENDLY**













Have Fun In  
Fairview This Weekend!

**TRI-COUNTY IMPLEMENT**

Sidney, MT • 2429 W. Holly • 406-488-4400 • 1-800-624-6540  
Visit our web site at tri-cnty.com

# Bridge to the Holidays

## Sunday, November 17th



### WELCOME TO THE HOLIDAYS!

Join us for cider, coffee & homemade goodies every Friday in December

Donations of non-expired canned goods for the Fairview Food Bank as well as hats & mittens for "Gifts From The Heart" are welcome



**m Merchants Bank**

Big enough to serve you | Small enough to know you

216 S. Ellery Ave. • Fairview, MT | 406-742-5203 | Mon-Fri: 9am - 4pm

### Enjoy The Bazaar & Lighting of the Fairview Bridge!



**Eagle Country Ford**

"Experience the Eagle Country Difference!"

215 East Main • Sidney, MT | 433-1810 or 1-800-482-1810 | eaglecountryfordsales.com



Enjoy the weekend and an ice cold Pepsi!



**BLUE ROCK PRODUCTS**

SIDNEY MT

### Enjoy All The Festivities This Sunday!

Pizza  
Burgers  
Beer  
And More  
Free Ice Cream With Purchase



**Powder Keg PIZZA**

47 Years

www.powderkegpizza.com

Fairview, MT • 406-742-5180  
Open Tues-Fri at 4:30 pm • Sat & Sun at 2 pm

### Season's Greetings



**Miller's Garbage Service**

406-776-2334 • Savage

### Merry Christmas!

FROM ALL OF US AT

**NEU'S SUPERVALU**

• Grocery • Bakery • Fresh Meat • Beer  
• Ice • Snacks • Full Service Deli

406-742-5441 | 303 S Ellery St • Fairview, MT

### THE SEASON'S BEST TO ALL!



**GOLD RUSH**

CASINO & LIQUOR STORE

504 South Ellery • Fairview, MT • Lounge: 742-4653 • Open 10am - 2am Daily

### Enjoy The Fairview Lighting of the Bridge This Weekend!

**SIDNEY AUTO SUPPLY**

AUTO PARTS • HEAVY DUTY TRUCK PARTS • TOOLS & EQUIPMENT

**INAPA AUTO & TRUCK PARTS**

809 E Main St • Sidney, MT | 406-433-6430  
Mon-Fri: 7:30am - 5:30pm • Sat: 7:30am - 2pm



**Merry Christmas!**

### HURLEY'S OILFIELD SERVICES

• Porta Potties • Potable Water  
• Sewer System • Loaders  
• Communications • Backhoe  
• Trucking • Skid Houses

**Fairview, MT**

**Dispatch: 701-844-1234**

## Stockman Bank

COME OUT AND ENJOY THE LIGHTING OF THE BRIDGE!



Sunday, November 17, 5:00pm-8:00pm  
Fireworks at Fairview Bridge at 7:00pm

Montana's Brand of Banking

Member FDIC | Equal Housing Lender



# Bridge Lighting

5-8pm • Fireworks 7pm

*Santa Will Be There!*

Chili & Hotdogs by FCCLA

Craft Bazaar • 10am - 3pm

FHS Cafeteria & Commons Area

Lots of home crafted items, demonstrations, delicious food items, upcycled treasures, community booths & the FCCLA Coffee Cart



## Builders FirstSource

ProBuild, LLC

Enjoy the Craft Bazaar & Lighting of the Bridge!

Great Gift Ideas For The DIY Person On Your List  
Mon - Fri: 7am - 5pm • Sat: 8am - 1pm  
100 14th Street SE • Sidney, MT | 406-433-2012 | www.bldr.com

Enjoy The Lighting of the Bridge

Unique Gift Ideas for the Grandpa Who Has Everything!  
Jerky • Pork Rinds • Pickled Eggs  
Pork Hocks • Specialty Candies  
And Candy Canes For Everyone

**East-Mont Enterprises Inc.**  
CANDY • PAPER GOODS • CLEANING SUPPLIES & MORE!  
608 E. Main • Sidney, MT | Wholesale Distributors | 406-433-2910

**ENJOY THE BRIDGE LIGHTING!**



1601 S Central • Sidney, MT  
433-3858 | Mon-Fri: 7am - 5:30pm

*Happy Holidays!*

*from Jim & Rebecca Miller*



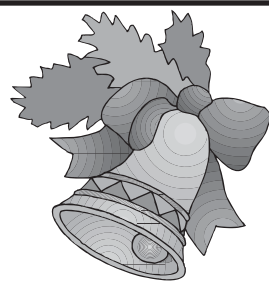
776-2500  
**SAVAGE, MT**

*Happy Holidays*  
From All Of Us At:



419 S. Ellery • Fairview, MT | 406-742-5164

ENJOY ALL THE EVENTS IN FAIRVIEW THIS SUNDAY!



**LYREC**

LOWER YELLOWSTONE RURAL ELECTRIC COOPERATIVE

Your Touchstone Energy Cooperative

3200 W. Holly • Sidney, MT | 406-488-1602 • www.lyrec.com



Shari Twigg, MD

Welcome to Fairview for Silver Bells  
Wishing you and yours a very Merry Christmas and Healthy New Year in 2020!

**ADVANCED AESTHETICS**  
A Service of SIDNEY HEALTH CENTER

**HOURS**  
Monday: 9 AM - 5 PM  
Tuesday: 10 AM - 7 PM  
Wednesday: 10 AM - 7 PM  
Thursday: 9 AM - 5 PM

304 S Ellery, Suite 2 • Fairview, MT • Phone: 406-742-5256



Jacquelyn Free, FNP

Welcome to Fairview for Silver Bells!  
Wishing you and yours a very Merry Christmas and Healthy New Year in 2020!

**MONDAK FAMILY CLINIC**

An Outreach Service of SIDNEY HEALTH CENTER

**HOURS**  
Monday - Thursday: 8:30 AM - 5:00 PM  
Friday: 8:30 AM - Noon

304 S Ellery • Fairview, MT • Phone: 406-742-5261

*Happy Holidays!*



416 S. Ellery, Fairview  
406-742-5224

Welcome to Fairview's Silver Bells

Everyone at MonKota Fertilizer & Irrigation would like to wish you a Merry Christmas and Thank You for your business.



**Mon-Kota, Inc.**  
Fertilizer & Irrigation

Sales & Service  
Fairview, MT • 701-844-5300

Stop In For Great Food & Fun!

**Festival of Trees**

Sat, Nov 30th • 5pm  
Live & Silent Auction of Trees & Wreaths  
Free Hors d'oeuvres 6-8pm

**Steakhouse Hours:**

Sun-Thurs: 5-9pm • Fri & Sat: 5-10pm • Prime Rib Every Fri & Sat!

Weekday Happy Hour From 5-7pm!



**LIVE POKER NIGHTLY!**

401 ELLERY AVE  
FAIRVIEW, MT  
406-742-8110

Welcome To The Holidays!

Enjoy All The Festivities Sunday!



**NEU CONSTRUCTION, INC.**

Fairview, MT 59221  
Office: 406-742-5549

**HAPPY HOLIDAYS!**



horizonresources  
Solutions for your success.

Fairview, MT | 701.844.5775



UNION GATEWAY AGENCY

Your Insurance Team  
Independently  
Representing:

UGA

~Life  
~Health  
~Medicare Supplement  
~Medicare Part D  
~Group Health  
~Vision  
~Dental  
~Long Term Care

202 3rd Ave NW  
Sidney MT 59270  
phone 406-488-4366  
fax 406-630-4433

BlueCross BlueShield  
of Montana

Aflac

PacificSource  
HEALTH PLANS

www.uniongatewayinsurance.com

# Montana Public Schools To Have Access To Additional Funding Flexibility And Efficiencies For Staff

MUST Multidistrict Cooperative to support schools in funding employee health benefits

Helena - Montana Unified School Trust (MUST), is excited to be able to offer Montana's public schools additional flexibility and efficiencies in their funding of employee health benefits. Public schools now have the option to participate in the MUST Multidistrict Agreement to support services and activities for the funding and operations related to their employee health benefits. "My focus at MUST has been to ensure we are responsive to our membership and to look for options to meet their needs. The Multidistrict Agreement allows MUST to help our public schools utilize available means to fund employee benefits," said Andrew Holmlund, CEO of Montana School Services Foundation (MSSF). As a retired superintendent, "I believe support of our public schools and staff is essential in providing an excellent education for our youth. With one focus, we at MUST are proud to partner with our public schools for finding solutions aimed at

tackling their challenges," Mr. Holmlund shared. **About Montana Unified School Trust** MUST, as a member-governed, self-funded health insurance program, has been serving Montana's public schools and their employees since 1987. Based in Helena, MSSF administers the trust sponsored by Montana Federation of Public Employees (MFPE), Montana School Board Association (MTSBA), and School Administrators of Montana (SAM). MUST is also endorsed by Montana Rural Education Association (MREA) and Montana Association of School Business Officials (MASBO). MUST serves school districts across the state by providing benefits to over 7,700 covered members. MUST's website is [www.mustbenefits.org](http://www.mustbenefits.org).

## LVA Annual Meeting Announcement Nov. 19, Sidney

The Board of Directors of Learning Volunteers for Adults-Richland County will hold its annual meeting on Tuesday, November 19 at 5:30 p.m., with the regular board meeting to follow at 6:30 p.m. at the Sidney/Richland library basement This meeting is being held to: re-elect members whose terms have expired and the transaction of such other business as properly may come before it. Guest speaker is Kris Gifford.

## Producers Reminded Of New Livestock Loss Payment Requirements

Helena, Mont. – Montana's Livestock Loss Board pays livestock owners for verified livestock losses due to wolves, grizzly bears and mountain lions. SB 133 was passed during Montana's 2019 legislative session and requires a livestock owner to be current on their per-capita fees in order to receive a payment from the State for their loss. A portion of the text of SB133 bill is as follows:

(b) Before the board may issue a reimbursement for losses to a livestock producer eligible for coverage for losses, the department of revenue shall certify that the livestock producer has paid per capita fees as required by 15-24-921. Except for a tribal member or tribal entity participating in an authorized agreement pursuant to 2-15-3113, a livestock producer may not receive a reimbursement for losses until the producer has paid any delinquent per-capita fees. Anyone owning livestock is annually required to pay per-capita fees. While not all livestock are covered for loss, there is still a requirement to pay fees on cattle, sheep, goats, horses, mules, swine, poultry, bees, llamas, alpacas, bison, domestic ungulates, ostriches, rheas and emus. Per-capita fees help fund the Department of Livestock activities such as monitoring animal health, preventing and investigating livestock theft and managing predators.

Montana's Department of Revenue collects per-capita fees for the Department of Livestock. If you have not paid your fees, contact them at 406-444-6900 or visit their website at: <https://mtrevenue.gov/%20property-types/livestock/>.

More information on per-capita fees can also be found on the Department of Livestock's website at: <http://liv.mt.gov/Centralized-Services/Per-Capita-Fees> or by calling 406-444-4993.

If you suspect your livestock loss is due to wolves, grizzly bears or mountain lions, call USDA Wildlife Services at 406-657-6464 to request an investigation. The Livestock Loss Board can only pay claims for confirmed or probable death loss verified by USDA Wildlife Services.

The mission of the DOL is to control and eradicate animal diseases, prevent the transmission of animal diseases to humans, and to protect the livestock industry from theft and predatory animals. For more information on the department, visit [www.liv.mt.gov](http://www.liv.mt.gov).

## Richey Public Schools Honor Roll

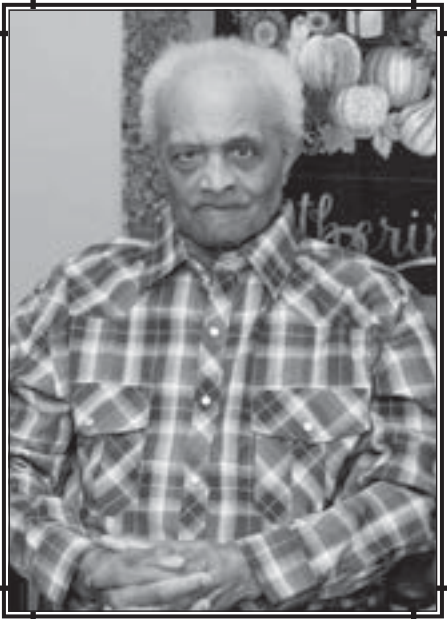
**"A" Honor Roll**  
6th Grade: Lina Smith; Jacqueline Barnhart.  
7th Grade: Kally Strohm; Erin Kelly.  
8th Grade: Ryan Eggert; Kiera Strohm.  
9th Grade: Joshua Sponheim.  
10th Grade: Ella Robbins; Shawna Eggert; Jaylyn Klempel.  
11th Grade: Nicholas Ellerton; Laurel Sponheim; Isabelle Fatzinger; Caleb Senner; Samuel Smith; Toby Clinton.  
12th Grade: Chance Senner; Peyton Sodt; Kodi Bireley; Inesa Tonoyan.

**"B" Honor Roll**  
5th Grade: Jade Robbins; Jolee Klempel.  
6th Grade: Adilyn Elverud.  
7th Grade: Mason Hagwood; Austin Veverka.  
8th Grade: Taylor Goosen.  
9th Grade: Mataya Veverka; Nathan Senner; Matthew Ellerton.  
10th Grade: Jacob Smith.  
11th Grade: Jayden Goosen; Wyatt Robbins; Micah Buller.  
12th Grade: Neale Kelly.

## Lambert School 1st Quarter Honor Roll, 2019/20

Lambert School supports two honor roll awards. Students maintaining a 4.0 – 3.5 will earn an "A" honor roll status. Students with a 4.0 are indicated with an "\*\*". "B" honor roll status is for students earning a 3.0 – 3.49

**"A" Honor Roll 3.5-4.0**  
Jr. High: Gracie Gonsioroski, Brie Mullin, Lauren Prevost\*, ShaeLyn Williams and Jayla Huft  
High School: Royce Candee, Colter Carda, Gabe Gonsioroski, Sarah Helmuth, Courtney Herman, Alyssa Hill\*, Lauren Krenning\*, Blake Lien, Mason Mavity, Tekle Mamatsahvili, Aigerim Tolekova, Makyya Beyer, Paige Carda, Grady Gonsioroski\*, Amira Kasymova, Nick Engesser and Courtney Hofman.  
**"B" Honor Roll 3.0-3.49**  
Jr. High: Austin Lien, Halley Mullin and Rafhael Barcana  
High School: Ethan Pust, Hunter Watson, Blaine Frisbie, Amber Pflughoft, Dalya Hasan, Brett Mullin, Morgan Candee, Piper Carter, Tiegen Cundiff, and Layne Herman.



COME JOIN US FOR A  
**BIRTHDAY  
OPEN HOUSE**

HONORING:  
**BILLIE DAVIS**  
**"SNOBALL"**

**SIDNEY HEALTH CENTER**  
EXTENDED CARE

Celebration hosted by Sidney Health Center Extended Care staff & residents.

**THURSDAY | NOV. 14**  
**1:00 PM - 3:00 PM**  
**SADIE'S**  
Sidney Livestock Market Center | 720 10th Ave SE

**IT'S TURKEY BINGO TIME!**  
**Tues, Nov 19th**  
Watford City Intermediate School

4-H Soup & Sandwich  
Supper ..... 5pm  
Bingo..... 6:30pm

**COME FOR SUPPER, STAY FOR THE TURKEYS**



**1/2 PRICE SALE**  
**2 DAYS ONLY! FRI & SAT, NOV 15 & 16**  
**IN "THE GARAGE"**

**Come Check Out All The New Items Including Bracelets & Clip Earrings, Western Decor & More!**

**YELLOWSTONE Marketplace**

Good Used Furniture • Artwork • Antiques • Used Books • Jewelry • Ice Cream

We Accept Credit Cards  
102 N Central Ave • Downtown Sidney  
Mon-Sat: Noon - 6pm | 406-489-1945



**Christmas Sale!**

<b>Beef Sticks</b>	
30-35 per box .....	<b>\$22</b>
<b>Cheese Sticks</b>	
24 per box individually wrapped.....	<b>\$12</b>
<b>Smokey Snack Sticks</b>	
16 oz, 11-12 per package.....	<b>\$14</b>
<b>NEW Cheese Lover's Box</b>	
Assorted Cheese.....	<b>\$15</b>
<b>NEW Beef Jerky</b>	
6 oz .....	<b>\$15</b>

**Support your 4-H program by planning now to place an order when a member contacts you or call 406-433-1206**

.....  
By popular request, Richland County 4-H Clubs will be taking orders through Nov. 15th for the same great tasting beef & cheese sticks offered during our Spring Citrus Sale. These will make great gifts for those hard-to-buy-for on your Christmas list!

**Deliveries will be made the week of December 2nd**

**2019 Blowout CLEARANCE SALE**

**Modulars, Manufactured & Singlewides!**  
**No need to order, these homes are ready to go!**



**BILLINGS • 3800 Pierce Parkway • 406-655-8000 • www.piercehome.com**  
**GREAT FALLS • 5200 10th. Ave. South • 406-453-8117 • www.piercehome.com**



# Golden Roundup

## Always A Season Late

By Lois Stephens

It seems my husband and I always decide to begin a project at the wrong time of year. We purchase snow shovels in April, barbecues in November, and sleds after the snow melts, a new self-propelled four-wheel drive push lawn mower when the grass has withered in the fall, and the list goes on. Whatever we do, we end up waiting months before we get to use our new item.

This September we pulled our usual “let’s do it now when it’s too late to take advantage of it this season” stunt. We decided to treat ourselves to a small greenhouse. This wasn’t a spur of the moment decision, as I have debated the benefits of a greenhouse ever since we moved to our little cabin on the mountain. This summer when a late June hailstorm stripped the potatoes, knocked the stuffing out of the zucchini, and totally demoralized the cucumber plants, I decided now was the time. (Yes, I know, this resembles locking the barn door after the cow has wandered off, but as I say, this seems to be our modus operandi.)

I had it all planned. A greenhouse would protect my warm season crops, such as the tomatoes, cucumbers, zucchini, and winter squash, all of which need heat and a longer growing season. These vegetables would enjoy an early start, grow all summer long in a naturally heated, well-lighted environment, would not have to struggle with cool mountain nights and slow-to-warm-up mornings, and they would have protection from the elements, like unwanted hail, late frosts, strong winds, and other unpredictable weather occurrences. I’d grow my potatoes, onions, and carrots outside in the small garden plot, but the tender, delectable veggies would have it made, living the easy life within a protected place. We might even get a harvest with the help of a greenhouse.

I researched greenhouse kits before I spent my money. I knew I wanted twin wall polycarbonate for the entire greenhouse, not just the roof, and after some investigation, I found what I thought I wanted. Better yet, the greenhouse came as a snap-together kit, so I figured, how hard would this be? It ought to go together in a snap, so to speak.

Before the greenhouse kit arrived, we had to construct some sort of foundation. My husband and I used railroad ties that we dug into the earth, then leveled and squared them, and secured them firmly in place. I figured, in my naivete, that preparing the foundation would prove the most difficult part of the project. After all, the kit snapped together so how tough could it be to erect this small 6x8 foot structure?

The greenhouse arrived in two large boxes and one smaller box. We opened the boxes, sorted the parts and the hardware, and turned our attention to the directions. The instructions turned out to be mostly illustrations, with very few written directions whatsoever. We rolled up our sleeves and began.

I should have known this would take longer than expected when we had to put the first side of the foundation pieces together twice. With no written directions, we had to guess whether the smaller sections went between the larger ones or did the two larger sections go between the smaller ones. Of course, we guessed wrong the first time, realized the side was too long, and had to take it apart. After carefully counting the number of pieces of each

length, sorting them by size, and then snapping them together we achieved the proper length and width for our structure. So good, we got the foundation set, squared, and bolted to our railroad ties.

The greenhouse is designed with a hip roof, or gambrel roof structure, with straight walls, then two symmetrical slopes on both sides that form the roof. The walls went up easily, with the frames connecting to one another like I had pictured, and the polycarbonate slipping into place with no difficulties. I figured we’d finish the project that day.

However, the further we proceeded, the more difficulties we encountered getting parts to snap into place, aligning the walls with the sloped roof portions, and most importantly interpreting the illustrations.

The hardest part proved to be the roof. Have you ever seen that optical illusion composed of boxes that when looking at it one way the white portion appears to be the top, but looking at it from a different angle the white portion becomes the bottom? Well suffice it to say, some of the illustrations acted like stunning optical illusions. Looking at a picture the first time, it appeared that the ridged side of the piece in question ought to be on top, so that is how we put the vent frame together. However, it did not fit, so on closer inspection we decided the ridged part really belonged on the bottom. Considering we never put a greenhouse together before, I guess we did OK, but I hate to mention how many times we had to take a particular

piece apart and reconfigure it the opposite way before it fit in its proper place.

Needless to say, it took us two days to put together a 6x8 snap and grow greenhouse. Tempers occasionally flared as we two old people got frustrated, particularly on day two when we had had enough of puzzles and illusions and interpreting illustrations. We persevered without coming to blows, however, and now we actually have a standing structure that so far has withstood wind and weather. At least we got it together before the snow arrived, but of course now I have to look at it standing empty for the next six months before I can see how well it works. Ah well, at least we have it in place, ready for spring and a new growing season.

I wonder what we will decide to purchase in April that we need for the winter months?

**CHOOSE HOME INITIATIVE**  
Help keep veterans healthy and independent

Are you age 55 or older and have some spare time, like to help others and want to earn some tax-free money? Volunteers are needed to support and assist Veterans. Become a Senior Companion, it's easy to apply simply call Action for Eastern Montana at 406-433-4967 or 866-433-4967

**NETZER LAW OFFICE, PC**

**Estate Planning And Real Estate**

Licensed in Montana and North Dakota  
1060 S. Central Ave. Ste. 2, Sidney, MT  
406-433-5511 • netzer@midrivers.com

**In order to spend the Thanksgiving Holiday with friends & family, we will be closed on Thanksgiving Day and closing at noon on Friday, November 29th.**

**The Roundup**  
406-433-3306  
111 West Main • Sidney, MT

*It's All About Saying Goodbye*

**FULKERSON STEVENSON FUNERAL HOME**

**315 2nd St NW**  
Sidney, MT • 406-488-2805

**Watford City: 701-842-2490**  
**Williston: 701-572-6329**  
**Tioga: 701-664-2122**

*Remembrances & condolences may be shared with family at:*  
**www.fulkersons.com**

**Crestwood Inn**  
410 3rd Ave. S.W. • Sidney • 433-3721  
crestwd@midrivers.com TTY711

**“Retirement Living At It’s Best”**

Large 1 bed apartments • Individual climate control  
• Close to downtown • Transportation available  
Activities • Noon meals • Support Services  
Security cameras

**Come Home To Crestwood!**

**OPEN ENROLLMENT 2019**

*If you need health insurance the time to enroll is coming up!*

**November 1st– December 15th!**

**Open enrollment is the time to get a new policy or make changes to your current policy *without* restrictions.**

**Please call to make an appointment to review the new pricing and options for 2020.**

202 3rd Ave St NW,  
Sidney MT 59270  
Phone: (406) 488-4366  
Fax: (406) 630-4433

**Why should I visit an orthopedic specialist for my joint pain?**

So I can travel to Arizona with my golf buddies  
Duke depends on me for his daily walk  
Someone has to chase the grandkids at the park  
Because together we're healthier

Life is too short to live with hip, knee, or shoulder pain. Especially when there is something you can do about it. The sooner you make the decision to get relief, the sooner you can get back to the things you enjoy.

Providing more orthopedic services than ever before!

For more information about orthopedic services visit our website: [CHISIAlexiusHealth.org/Williston](http://CHISIAlexiusHealth.org/Williston)

Dr. Mai | Dr. Smith | Dr. Brown

**CHI St. Alexius Health**  
Williston Medical Center  
Orthopedic Clinic  
701.774.7080





Lambert School’s Veterans’ Day Program

Lambert School held a program in honor of Veterans Day. Pictured are staff members singing patriotic songs. (Photos submitted by Nicole Simonsen, Lambert School Principal)

Devaniet Photography

[www.devaniet.wixsite.com/photography](http://www.devaniet.wixsite.com/photography)  
208-270-9539 • devtolzmann@gmail.com

devaniet

devaniet\_photography

Happy Thanksgiving

From:

The Roundup

In order to spend the Thanksgiving Holiday with friends & family, we will be closed on Thanksgiving Day & closing at noon on Friday, November 29.

111 West Main • Sidney, MT • 406-433-3306

All Because Of You

With your donations to Energy Share last year, you helped 2,885 Montana families who were facing energy emergencies. Causes of these emergencies included unexpected expenses, deaths in the family, non-working or unsafe heating systems, illnesses or injuries, domestic abuse situations, and loss of employment or reduced wages.

None of us are immune to these roadblocks in life. According to a GOBankingRates 2019 survey, 57% of Americans have less than \$1,000 in savings. That is not much to get a household through rough times. Such is the case for the types of situations with which Energy Share helps.

Do you remember how severe last winter was? A combination of vehicle breakdown, plumbing/sewer issues, high heating bills, and the water heater going out made it impossible for a couple with two children to stay current with their home energy bill. At a point of desperation, they applied for and received help through Energy Share and were able to keep their heat on.

Energy Share partners with the ten Human Resource Development Councils (HRDCs) around the state to deliver services. Each HRDC works with a local volunteer Energy Share Committee to review applications on a case-by-case basis. Depending on the community, Local Committee representation can be from electric cooperatives, utility companies, propane ven-

dors, other social services or job training organizations, churches, and senior citizen or low-income advocates. The HRDCs and Local Committees are the heartbeat of Energy Share.

If you or someone you know needs help with their home energy bill, please call Action for Eastern Montana in Glendive at 1-800-227-0703 (<https://aemt.org/>) or Energy Share at 1-888-779-7589 (<https://www.energysharemt.com/how-to-apply/>). They will also tell you about another energy assistance program called LIEAP, which might be an even better resource depending on your situation.

Energy Share relies on donations to carry out its primary purpose of helping Montanans who are facing energy emergencies. One hundred percent of private donations are used to help someone in need. If you would like to be involved this way, please visit <https://www.energysharemt.com/donate-now/> or look for a pledge card/donation envelope in your November utility bill. You can also mail a check to Energy Share of Montana, PO Box 5959, Helena, MT 59604-5959.

Tony Flynn, Energy Share Board President and NorthWestern Energy representative on the Board, strongly supports Energy Share. “Energy Share has helped so many Montanans over the years who were facing such rough times. Please help share the warmth and if you can, send a gift to Energy Share today.”

The Lower Yellowstone Chapter Of A.B.A.T.E. Seeks Toy Donations Or Cash Donations For 25th Annual Toy Drive

The Lower Yellowstone Chapter of A.B.A.T.E. (American Bikers Aiming Toward Education) is a nonprofit organization in Montana that promotes motorcycle education, safety and awareness. Our organization is involved in various community activities across Montana. These include motorcycle safety courses, annual children’s motorcycle safety poster contest, annual bike show, and involvement with many other nonprofit organizations in Eastern Montana.

Because the Lower Yellowstone Chapter is the largest in the state, our chapter splits into two counties, Richland and Dawson counties, for our annual toy drives. In Richland County we have worked closely with Christmas Coalition for 20 years; gathering, buying, and donating toys for Gifts From The Heart. Last year, in our community, we distributed gifts to 411 children among 151 families. Our chapter collects most of the toys and monetary donations from area companies, businesses, and individuals.

This continued support is what keeps our toy drive going.

We are looking for a tax-deductible contribution that will make a difference in a child’s life at Christmas. There are many ways to donate. Buy a gift from or drop it off at Johnson Hardware & Furniture during the Christmas Stroll on November 29. We will be selling sloppy joes, hot cocoa, hot apple cider and baked goods. Most of the ingredients and supplies are generously donated to us by Johnson Hardware & Furniture as a fundraiser for our toy drive. When you donate a gift during the stroll you will get a free meal! Monetary donations can be mailed directly to Stockman Bank-ABATE, 301 W Holly St., Sidney, MT 59270 or Maria Hodge, PO Box 62, Crane, MT 59217. Arrangements can be made to pick up toys by calling Maria Hodge at 406-480-3597.

We thank you for your continued support in this worthwhile endeavor during the Christmas Holiday.

KIDS EARN \$\$\$

JOIN THE ROUNDUP CARRIER TEAM

\$100

SIGNING BONUS!

(Distributed over a 5 month period)

PLUS COLD WEATHER BONUS DURING THE WINTER MONTHS & PERIODIC RAISES!

The Roundup

111 West Main • Sidney, MT | 406-433-3306

THE BUSINESS ROUNDUP

REACH 26,500 READERS IN THE ENTIRE MONDAK REGION

406-433-3306 OR 800-749-3306 ~ INFO@ROUNDUPWEB.COM

GO TO WWW.ROUNDUPWEB/DIRECTORY FOR DIRECT LINKS TO COMPANY WEBSITES & LOCATIONS

\$25<sup>00</sup>/WK

Signs OF SIDNEY

Signs • Banners Vehicle Lettering Vinyl Letters Location Signs Decals with High Tack Option

224 6th St. SW, Sidney • 406-433-2476 • [signsofsidney@midrivers.com](mailto:signsofsidney@midrivers.com)

DOORBUST'N

Portables & Septic Service, LLC

Office: (406) 433-7586 Fax: (406) 433-7596 Service: (406) 489-0915

PO Box 1003 / 34980 Hwy 23, Sidney, MT

- Portable Toilet Rentals
- Septic Pumping & Installation
- Jetting Frozen Sewer Lines
- Pump Repair & Replacement
- Snake Jobs
- Camera-Locate Sewer Lines
- Pipe Burst Sewer Lines (eliminates digging up entire yard)
- Troubleshooting

NICK JONES REAL ESTATE REALTOR®

TRUCK ROUTE SOUTH, SIDNEY OR CONTACT ONE OF OUR AGENTS:

JUSTIN JONES 406-480-9525 DENNIS WICK 406-480-1550 JERRIK FRANKEN 406-479-3773 KRISTIN LARSON 406-480-5130 HOME: 798-3115

[WWW.NICKJONESRE.COM](http://WWW.NICKJONESRE.COM)

Customer Service is Our #1 Priority

BORDER STEEL AND RECYCLING, INC.

Farm & Ranch, Oil Field & Construction Materials, Fencing Supplies, New Steel, Pipe, Aluminum & Stainless

Sidney: 35002 CR 123 • 406-433-7737 Williston: 13896 W. Front St. • 701-572-5493 Glendive: 2703 W. Towne St. • 406-377-4398 Miles City: 12 Peggy Lane • 406-874-7428 Plentywood: Hwy 16 East • 406-765-2624

HOSE ASSEMBLIES WHILE YOU WAIT

MFCP MOTION & FLOW CONTROL PRODUCTS, INC.

Fluid Connectors • Industrial Hose • Seals Hydraulics • Pneumatics • Automation Filtration • Racor • Instrumentation

406.433.1590 203 10th Avenue SE SIDNEY, MT 59701 After Hours: 406-475-3116 WWW.MFCPPINC.COM

SIDNEY WOODWORKER & LUMBER

House & Garage Packages, Medallion Cabinetry, All Styles Floor Covering, Plumbing Supplies, Anderson Windows, Trim & Millwork & Pole Barn Packages

WE DO AFFORDABLE HOMES BEST!

1420 5th St SW • Sidney, MT [www.sidneywood.com](http://www.sidneywood.com) 406-433-7767 • 406-489-1880 M-F: 8am - 5pm • Sa: 9am - 1pm

YOUR COMPANY HERE

Network • Automation • Smart Home • AV Solutions

ELECTRICLAND

225 2nd Ave NE • Sidney, MT | Mon - Fri: 9am - 5pm | 406-433-4370

YOUR COMPANY HERE



# How To Get Your Deer Or Elk Tested For CWD In Region 7, Montana

Are you hunting in Montana Fish, Wildlife & Parks Region 7 this season and want to have your deer or elk tested for Chronic Wasting Disease?

CWD has not yet been detected in Southeastern Montana's Region 7, but FWP anticipates finding it due to proximity to CWD cases in other states and provinces. This season, FWP will provide free testing services to anyone hunting deer, elk and moose anywhere in Montana. It takes about three weeks to get results online.

CWD sampling is still voluntary in Region 7, but FWP has sampling goals that will help the agency determine how prevalent the disease is across the state. This research will guide future management and prevention efforts.

There have been no cases of CWD transferring to humans, but the Centers for Disease Control and Prevention recommends against eating the meat of an infected animal.

If you would like to have your animal tested, here's what you can do:

Visit a CWD check station Saturday through Monday

If you are hunting near Ashland, Hysham or Ekalaka on Saturday, Sunday or Monday through December 1, visit a CWD check station in one of these areas. Stations will be open on Saturdays and Sundays from 10 a.m.-sunset, and on Mondays from 8 a.m.-noon. Bring the animal's head and four inches of neck meat to the station. Technicians there will remove the retropharyngeal lymph nodes from the throat area, collect information on harvest location and submit the sample for testing. Each hunter is given a unique ID number, and he or she can check results online at fwp.mt.gov in about three weeks. If the sample comes back positive for CWD, FWP will contact that hunter directly.

Hunters are reminded that they must stop at all check

stations that they pass, even if they have not harvested any animals.

If you are in the Broadus area, technicians will be available to collect samples at the FWP office in Broadus on Tuesdays from 10 a.m. to sunset.

Bring the animal's head to a regional FWP office

Bring the animal's head to a regional FWP office Monday through Friday from 8 a.m.-5 p.m. In Region 7, the headquarters is in Miles City. You will be asked to provide information including the township, range and section where the animal was harvested so that FWP can track surveillance efforts and follow up in the event of a CWD-positive sample. Results should be available online in about three weeks.

Collect and submit the sample yourself

Hunters also may collect

the sample themselves and send it directly to the FWP lab in Bozeman. Videos and instructions for how to do that are online at fwp.mt.gov/cwd. Again, it takes about three weeks to view results online. Hunters must cover shipping costs, but FWP will pay for sample results.

Priority Sampling Areas and CWD Management Zones

FWP will accept samples from all over Montana, but research efforts are focused on Priority Sampling Areas. Region 7's Priority Sampling Area covers the southern portions of Hunting Districts 702, 704 and 705. If you harvest an animal inside this area, FWP encourages you to have it tested for CWD. Check stations at Ashland, Hysham and Ekalaka are located within or near the Priority Sampling Area.

CWD Management Zones

Continued on page 12A.

## Hospital Receives Grant For Immunization Program, Williston

Williston, ND – The Alliance for Continuing Education in Health Professionals and Pfizer have generously chosen CHI St. Alexius Health Williston as recipients of the Improving Pneumococcal Immunizations in Immunocompromised Patients grant. This grant will allow us to implement a pneumococcal vaccination program in our Leonard P. Nelson Cancer Center in alignment with our mission, vision, and goals. At CHI St. Alexius Health Williston we are continuously striving to champion wellness in our community and this program is an extension of that continuous strive for excellence.

The goal of the program is to increase immunization rates by giving patients the opportunity to receive the pneumococcal vaccination during pre-existing appointments as opposed to having to create a separate appointment. Pneumonia continues to be the ninth leading cause of death in the state and here in Williston we still see around ten cases every month. Especially given our rural health status, an additional appointment for patients can mean the difference between receiving care and not. By making it easier for patients to receive the vaccine when convenient for them and providing education surrounding the vaccine we hope to increase immunization rates leading to a healthier patient population and community.

# SHOP SIDNEY

Winners Shop In Sidney  
**NO SALES TAX!**



**Win a \$50 Gift Certificate**

Each Week 'Til Christmas  
Register At The Sidney Firms Listed On This Page

*But Wait...There's More*  
**Get a 0% Big Bucks Loan of \$500 - \$1000**

**Big Bucks Welcome At These Stores:**

**Sunny's**

**Meraki Boutique & Emersyn Lane**

**Sidney Eye Care**

**Winner's Pub**

**Path**

**J's Fashions**

**John Stockhill Jewelers**

**Reynolds Market**

**High Caliber Sports & C4 Athletics**

**Eagle Country Ford**

**Tri-County Implement**

**MT Bare Cave**

**Reese & Ray's IGA**

**1st Choice Collision Center**

**SIDNEY LIVESTOCK MARKET CENTER**  
*Working Hard To Build A Competitive Marketplace For Your Livestock*

**Nov. 13th & 20th Feeder Specials**  
**Expecting 3,000+ Feeders Each Sale With Many Groups Over 200 Head**

**BRED HEIFERS & STOCK COW SALE**  
**Nov. 23rd • 11am (MDT)**

**BRED HEIFERS**  
**Poplar MT:** 250 Red Angus Bred Heifers, 1000#s, Start Calving March 1st for 60 Days, Bred to LBW Lorenzen, Ludvigson & Midland Bull Test Red Angus Bulls, Originated off 2 Ranches  
**Sidney MT:** 135 Red Angus Bred Heifers, 80 Al'd to Leland Red Angus Bulls, The Rest Bull Bred, March 20th Calving, 2 Rnds of Shots, All Natural.  
**Sidney MT:** 90 Black Angus Bred Heifers, 1000#s, All off 1 Ranch & 1 Brand, Bred to Gartner Denowh & Hansen Angus LBW Bulls, Start Calving April 1st for 2 Cycles.  
**Sidney MT:** 60 Black Bred Heifers, Bred Black, Al'd on June 26th, 2019, Gartner Denowh Bull, Calving April 10th  
**Wolf Point MT:** 110 Black Angus, Bred Heifers, Bobcat Sired Heifers, Bred to LBW Bobcat Heifer Bull, Calving March 27th - April 17th

**BRED COWS**  
**Lambert MT:** 118 Bred Cows, **Complete Dispersion**, Black Angus Bred Red, Calving End of March  
**Sidney MT:** 80 Head of 3 Year Old Black Angus Bred Cows, Bred Black, Calving April 1st  
**Poplar MT:** 40 Red Angus 3 & 4 Year Old Bred Cows, Bred Red Angus  
**Sidney MT:** 60 Mixed Age Bred Cows, Bred Blk Angus Calving April 1 - April 14, Bred Blk  
**Froid MT:** 35 Running Age Red Angus Bred Cows, Bred to Sandhill Red Angus Bulls, Calving March 20th for 50 Days  
**Froid MT:** 40 Red Angus Short Term Bred Cows.  
**Crosby ND:** 48 Bred Cows, 1/2 Short Term & 1/2 Bred Heifers to 10 Year Olds, Mostly Blk, Heifers are bred to Salers & the Rest Bred to Blk Bulls, Calving Mid May to Mid July  
**Wolf Point MT:** 35 Bred Cows, Mixed Ages, May through July Calving  
**Sidney MT:** 17 Mixed Age Bred Cows, Black Angus Calving in June, Bred Black  
**Sidney MT:** 18 Black Angus Mixed Age Bred Cows Calving in April, Bred Black  
**Sidney MT:** 27 Black Angus Short Term Bred Cows Calving In April  
**Crosby MT:** 27 Bred 9-12 Year Old F-1 Black Baldies, Start Calving April 15

**Tim Larson:** 406-480-2666 ..... **Dustin Cymbaluk:** 701-220-0813  
**Terry Moe:** 701-580-2426 ..... **Christy Albin:** Office Manager  
**406-482-3513 | www.sidneylivestock.com | ylc@midrivers.com**



# The Roundup Classifieds

Reach Over 21,000 Readers Each Week In Eastern Montana & Western North Dakota And Always On The Internet at [roundupweb.com](http://roundupweb.com)  
(Paypal required for online purchases)

Add a photo to your classy online! (additional charge)

Now Taking Credit Cards! (5% charge added to all transactions)

Get Up To 30 Words For Just \$9.25 • Deadline: Monday noon

**HELP WANTED**  
**PART-TIME BARTENDER**  
**NEEDED SIDNEY**

3 to 4 shifts a week, must be able to work day or night shifts and Saturdays. Starting pay \$9 an hour. Stop in at the VFW, 124 2nd Ave. NE, Sidney, fill out an application and ask for Betty.

**HANDYMAN**  
Handyman wanted for wide range of maintenance and repair. 406-489-5195.

**PART TIME DRIVER**  
**WANTED**

Part time Delivery Driver for The Roundup to drive to Dickinson, ND once a week to pick up newspapers and complete delivery stops in Watford City, ND and Sidney, MT. Average 10-12 hours per week. Must be able to lift up to 80 pounds. Must have a valid operator's driver's license, no CDL required, must have a clean driving record. Apply

by submitting a completed generic application and proof of driving record (MVR) to Job Service in Sidney.

**START YOUR REWARDING CAREER TODAY!**

The Roundup is looking for an Advertising Sales Consultant. Must be motivated and a self-starter. Reliable vehicle necessary. Full-time with excellent income potential. Sales experience a plus, but not required. Apply at Sidney Job Service.

**DENTAL HYGIENIST**  
Healthy Smiles Dental is looking for an energetic and motivated hygienist to join our team. Please drop off resume at 203 2nd Ave. SW, Sidney or email [drthiessen@midrivers.com](mailto:drthiessen@midrivers.com).

**CARRIERS NEEDED**  
Need extra cash or want to get some exercise while getting paid? We have carrier

routes available in several parts of Sidney. 406-433-3306 or fill out application at The Roundup, 111 W. Main, Sidney.

**FOR RENT**  
**HOME FOR RENT SIDNEY**  
3 bedroom, 2 bath, appliances included, washer and dryer, with 2 sheds. Available now. 406-488-6183.

**MANUFACTURED HOME, WATFORD CITY, ND**  
Large 1876 square foot manufactured home for rent. Unfurnished, 3 bedroom, 2 very large, 1 small; 2 baths, kitchen with appliances; dining, laundry, living and family rooms. You pay all utilities, water furnished. Lots of parking, very quiet neighborhood in Watford City, ND. Six month lease, \$1,000 deposit paid in 3 months. \$1,750 per month. Pets

allowed. References required. Available December 2. 701-300-4975.

**HOME FOR RENT**  
3,000 square foot home for rent in nice neighborhood. 3 bedroom, 2 1/2 bath, 1 car garage. No pets, no smoking, rental history required, \$1,800 a month, 1 year lease. Call Barry 406-480-2024.

**APARTMENT**  
2 bedroom, 1 bath, pet friendly, \$625. 406-489-5195.

**HANGERS FOR RENT**  
**HANGERS FOR SALE**  
Hangers available at the Sidney Airport. Call 1-406-480-2024 Text for faster response.

**FARM & RANCH**  
**HAY FOR SALE**  
Round alfalfa bales. Dale Tjelde, Cartwright, ND, 701-744-5871.

**BANJO FITTINGS, HOSE & SPRAYER PARTS**

Hefty Seed Company located south of Sidney has Banjo Fittings, hose and sprayer parts for area farmers & ranchers. Call 406-488-4338, store or 406-973-4338, Phil.

**SALT AND HORSE SUPPLEMENTS, EQUILIX, EQUIPRIDE**  
Redmond Natural Salt in 50 lb. bags or 44 lb. blocks. **Ask about the benefits of feeding garlic salt all winter long.** Equilix, Equipride, for the best in horse products, Equilix in tubs and Equipride in bags and pails. Sidney Feeds. 406-480-2024 Barry; 406-973-4338 Phil. Stoney Butte Feeds, Brockway; 406-485-2537 or 406-853-3551 Paul.

**SERVICES**  
**AIRCRAFT BUYING, SELLING AND APPRAISALS**  
Aircraft buying, selling and appraisals! Call Sidney Air Service, Inc for sales and acquisitions! Call 406-480-2024, ask for Barry.

**ROUND OR RECTANGULAR TABLES & CHAIRS FOR RENT**  
Parties, weddings, get-togethers. Ultimate Showdown Assoc. Located at Hefty Seed Co. South of Sidney, has tables & chairs for rent. Will deliver. Call 406-488-4338.

**REAL ESTATE**  
**HOUSE FOR SALE SIDNEY**  
2 bedroom, 1 3/4 bath, one level living, 400+ square feet, gas heat, shop, 2 carports, garden space in fenced yard, gas heat, near hospital, \$169,500. 406-488-6426 or 406-489-2392.

**FOR SALE: THREE NEW ZERO STEP HOMES IN SIDNEY**  
The Best Price/Quality in the Bakken. No association, own your lot and home, 2,000 sq. ft. per unit. \$265,000. Rauschendorfer Construction, 406-489-1880.

**FOR SALE**  
**SIGHTHOUNDS**  
Two 2-year-old female Sighthounds "like Greyhounds". Call 406-798-4969, leave a message.

**HANGERS FOR SALE**  
Hangers available at the Sidney Airport. Call 1-406-480-2024 text for faster response.


**BUSINESS OPPORTUNITY**  
**FOR LEASE IN SIDNEY**  
Full scale restaurant for lease January 1, 2020. Can accommodate any type of menu. Excellent downtown Sidney location. For more information call 406-489-1945.

**NOW SELLING NEW AND USED TIRES**  
*offering light mechanics as well*  
**MAGNUM MOTORS**  
Williston, ND • 701-572-0114 • 770-6375


**INSTALLED WINDSHIELDS FOR MOST MAKES AND MODELS**  
**MAGNUM MOTORS**  
Williston, ND • 701-572-0114 • 701-770-6375

*Start Your Rewarding Career Today!*  
**ADVERTISING SALES CONSULTANT**  
Must be motivated and a self-starter. Reliable vehicle necessary. Full-time with excellent income potential. Sales experience a plus, but not required. Apply at the Sidney Job Service.  
 111 West Main • Sidney, MT 406-433-3306 [www.roundupweb.com](http://www.roundupweb.com)

**WANTED!**  
Your good used couches, large appliances, kitchen tables & chairs.  
**Call 406-489-7431**  
**YELLOWSTONE Marketplace**  
102 N Central Ave • Downtown Sidney | Mon-Sat: Noon - 6pm

Inspired to CARE  
  
**Join our team! Job Opportunities**

Ambulance EMT	Housekeeping Housekeeper Laundry Attendant
Cancer Care Radiation Therapist Medical Assistant or LPN	Laboratory Compliance Coordinator Medical Laboratory Scientist/ Medical Laboratory Technician
Clinic RN, LPN or MA	Lodge Resident Assistant
Dining Services Cook Food Service Worker II Dishwasher/Utility Worker	Personal Assistance Aide
Extended Care Certified Nurse Assistant Director of Nursing Licensed Practical Nurse Registered Nurse	Registered Nurse Emergency Room Med Surg Surgery & Out Patient Surgery
Health Information Management Director	Revenue Cycle Director
	Social Services Director
	Surgery Certified Surgical Technician Sterile Processing Technician

 **SIDNEY HEALTH CENTER**  
*Exceptional Care for Life*

For additional information or to apply online, visit our website or contact: Human Resources at (406) 488-2571 [HR@sidneyhealth.org](mailto:HR@sidneyhealth.org) 216 14th Ave SW • Sidney, MT

**BENEFITS:** Health insurance • Generous paid leave • Competitive pension plan • Flexible spending accounts • Voluntary dental, vision, critical illness and accident insurance • Life and AD & D Insurance • Hospital and Fitness Facility Discounts

**Visit Our Website at: [www.sidneyhealth.org](http://www.sidneyhealth.org)**

**POSITIONS AVAILABLE AT RICHLAND COUNTY SHERIFF'S OFFICE**

**Detention Officer - Adult**  
**Salary: \$16.6 | Apply at Sidney Job Service**  
Full-time position available for individuals with good people skills and an interest in law enforcement. This position also requires some computer skills, communication skills, a current drivers license and a high school diploma or equivalent. Detention staff must attend and complete the MT Law Enforcement Academy, Detention Officer basic training course, paid for the by the employer within the first year of hire. *Benefits include: health insurance, HRA of \$1200/year, retirement, vacation, sick leave and holiday pay.*

**Communications Officer - Dispatcher**  
**Salary: \$16.6 | Apply at Sidney Job Service**  
Full-time communications officer/dispatcher position. Must have good verbal and written communication skills and skills in operating computer systems. Will also be required within first year of employment to attend a public safety communicator course at the MT Law Enforcement Academy. *Benefits include: health insurance, HRA of \$1200/year, retirement, vacation, sick leave and holiday pay.*

**The Roundup Classifieds**

Reaching over 10,889 Households in Western North Dakota and Eastern Montana Every Week

(Please Print)

(1) _____	(2) _____	(3) _____	(4) _____	(5) _____	(6) _____
(7) _____	(8) _____	(9) _____	(10) _____	(11) _____	(12) _____
(13) _____	(14) _____	(15) _____	(16) _____	(17) _____	(18) _____
(19) _____	(20) _____	(21) _____	(22) _____	(23) _____	(24) _____
(25) _____	(26) _____	(27) _____	(28) _____	(29) _____	(30) _____ (\$9.25)
(31) _____ (\$9.35)	(32) _____ (\$9.45)	(33) _____ (\$9.55)	(34) _____ (\$9.65)	(35) _____ (\$9.75)	(36) _____ (\$9.85) (etc)

**\$9.25 for 30 words or less; 10¢ per additional word**  
**Payment Must Accompany Ad**

# of words \_\_\_\_\_ x # of Times \_\_\_\_\_ = Cost \$ \_\_\_\_\_

**Mail To:** The Roundup PO Box 1207, Sidney, MT 59270  
Name \_\_\_\_\_

**Lunch Menus!**

**Sidney Schools**  
**Thurs., Nov. 14:** Super nachos, tots, banana.  
**Fri., Nov. 15:** Toasted cheese, tomato soup, peaches.  
**Mon., Nov. 18:** Chicken drumstick, potatoes and gravy, applesauce, dinner roll.  
**Tues., Nov. 19:** Burritos, tossed salad, peaches.  
**Wed., Nov. 20:** Biscuits and gravy, hash brown, orange juice.

**Savage School**  
**Thurs., Nov. 14:** Chili.  
**Fri., Nov. 15:** No school.  
**Mon., Nov. 18:** Ham and cheese.  
**Tues., Nov. 19:** Turkey dinner.  
**Wed., Nov. 20:** BBQ beef.

**Rau School**  
**Thurs., Nov. 14:** Chicken alfredo, mixed veggies, jello with fruit, garlic toast.  
**Fri., Nov. 15:** Biscuits and gravy, scrambled eggs, applesauce.  
**Mon., Nov. 18:** Burrito, spanish rice, apple.  
**Tues., Nov. 19:** Beef stroganoff, peas and carrots, pears.  
**Wed., Nov. 20:** Turkey dinner, potatoes, gravy, corn, mandarin oranges, pumpkin bars.

**Froid School**  
**Thurs., Nov. 14:** Taco salad, refried beans, lettuce mix, taco bar, fruit.  
**Fri., Nov. 15:** Fish patty on a bun, rice pilaf, veggies, fruit.  
**Mon., Nov. 18:** Scrambled egg bake, biscuits, go-gurts, fruit.  
**Tues., Nov. 19:** Cheeseburger soup, soft pretzel, veggies, fruit.  
**Wed., Nov. 20:** Salisbury steak, mashed potatoes, gravy, buns, veggies, dessert.

**Bainville School**  
**Thurs., Nov. 14:** Ham and cheese sliders, veggie sticks, applesauce.  
**Fri., Nov. 15:** Natalie Stokke Day! Spaghetti, breadsticks, strawberries, dirt cake.  
**Mon., Nov. 18:** Hot dog macaroni and cheese, broccoli, applesauce.  
**Tues., Nov. 19:** Shelby Hollanda Day! Tater tot hotdish, cantaloupe, chocolate ice cream.  
**Wed., Nov. 20:** Potato soup with ham and bacon, dinner roll, apple.

**Richey School**  
**Thurs., Nov. 14:** Turkey melt, carrots, pineapple, scotcha-

roos.  
**Fri., Nov. 15:** No school.  
**Mon., Nov. 18:** Sloppy joes, chips, mixed veggies, pineapple, cookie.  
**Tues., Nov. 19:** Fish sticks, gems, mixed veggies, fruit cocktail.  
**Wed., Nov. 20:** Cheesy chicken and rice, apricots.

**Culbertson School**  
**Thurs., Nov. 14:** Corn dogs, corn, pears.  
**Fri., Nov. 15:** Hot ham and cheese sandwich, carrots, criss cross fries.  
**Mon., Nov. 18:** Sub sandwiches, chips, pineapple.  
**Tues., Nov. 19:** Orange chicken, rice, mandarin oranges.  
**Wed., Nov. 20:** Hamburgers, peaches, fries.

**Lambert School**  
**Thurs., Nov. 14:** Chicken a la king, salad, fruit.  
**Fri., Nov. 15:** Pizza hotdish, buns, green beans, fruit.  
**Mon., Nov. 18:** Chili, cheese, crackers, buns, fruit.  
**Tues., Nov. 19:** Baked potato bar, fruit.  
**Wed., Nov. 20:** Fish sandwich, tots, fruit.

**Fairview School**  
**Thurs., Nov. 14:** Scalloped potatoes with ham, veggies, fruit, buns.  
**Fri., Nov. 15:** No school.  
**Mon., Nov. 18:** Corn dogs, chips, veggies, fruit.  
**Tues., Nov. 19:** Quesadillas, spanish rice, fruit.  
**Wed., Nov. 20:** Pizza, salad, fruit.

**Watford City School**  
**Thurs., Nov. 14:** Biscuits and gravy, hash browns.  
**Fri., Nov. 15:** Pepperoni and cheese pizza stick.  
**Mon., Nov. 18:** Chicken nuggets, twice baked potatoes.  
**Tues., Nov. 19:** Enchiladas with queso cheese and sauce.  
**Wed., Nov. 20:** Sloppy joes, fries.

**Alexander School**  
**Thurs., Nov. 14:** Build your own burger bar, fries.  
**Fri., Nov. 15:** Scalloped potatoes and ham, carrots, breadstick.  
**Mon., Nov. 18:** Chicken burger, fries.  
**Tues., Nov. 19:** Chili, cheesy breadstick.  
**Wed., Nov. 20:** Spaghetti or alfredo, green beans, garlic toast.



# Sidney Drama Places 1st In Class A Sweeps! Poplar Meet

Submitted by Christy Pierce

Speech, Drama & Debate travelled to Poplar this past weekend, coming home victorious. Twelve competitors loaded the bus at 6:30 a.m. tired and not sure which end was up, some of the kids used the bus time to go over the piece that they were going to use in the competition, others slept, but there were a few, who like myself stopped and got coffee before loading up on the bus so we were awake and ready to pump the team up. The meet was small but competitive, especially since it was only the second meet of the season. Since the meet was small Public Forum Debate and Extemporaneous speaking were not offered, so three of our competitors had to find different events to compete in. Sam Stephenson who usually competes in Public Forum placed 4th and Lorraine Coronato placed 1st

in Lincoln Douglas Debate. Brandon Smith usually competes in Public Forum but placed 2nd and Colten Dahl usually competes in Extemporaneous Speaking but placed 5th in Impromptu Speaking. Chloe Go placed 1st in Informative Speaking, bringing home the 1st place Trophy for Speech & Debate!!

The Drama Team had success also, Dramatic Soloist Daniel Schneider placed 2nd and Madi Brost placed 4th. Humorous Soloist Kodi Schulz placed 1st. Humorous Duo Josie Yockim & Kaileigh Laroche placed 1st, Classical Theatre Isaac Quiroz & Noah Kyhl placed 1st. Bringing home another trophy for the Drama Team! This upcoming Saturday the team heads to Dawson County High School!!



Pictured are back row, Brandon Smith, Sam Stephenson, Madi Brost, Noah Kyhl, Josie Yockim, Kaileigh Laroche, Kodi Schulz and Chloe Go; front Isaac Quiroz, Lorraine Coronato, Daniel Schneider and Colten Dahl. (Photo by Christy Pierce)

## GIVE THANKS WITH NEW THANKSGIVING DECOR



## Barrett Pharmacy & Variety

145 Main • Watford City, ND • 701-842-3311 • [www.barrettpharmacy.com](http://www.barrettpharmacy.com)

## EMPLOYEE PRICING **PLUS**

— AT THE —

## BLACK FRIDAY

SALES EVENT

## ON NOW AT RYAN MOTORS!

Just some samples of Fantastic Savings on select\* Dodge, Chrysler & Ram Vehicles:



### 2019 DODGE DURANGO

SAVE UP TO **\$9,704** IN TOTAL VALUE

### 2019 RAM 1500

**\$10,799 BELOW MSRP**

Plus \$500 Chrysler Capital Bonus Cash  
Plus \$1,000 Conquest Bonus Cash



### 2019 DODGE GRAND CARAVAN

MSRP: \$27,040

**STARTING AT \$25,667**

0% APR 36 Months OAC Plus up to \$2,000 Cash Allowance

### 2019 JEEP GRAND CHEROKEE

**0% APR 36 Months OAC Plus up to \$2,750 Cash Allowance**



\*See dealer for details. Excludes Jeep Wrangler, ProMaster, Challenger, Charger & Gladiator

## 1st Annual Cheer For Children Now Through December 5th



Ryan Motors is partnering with Williams County Foster Care Services to fill 2 truck beds with gifts for local foster care children newborn to age 18.

- Gift cards from local Williston businesses
- New, unwrapped gifts
- No clothing please

Bring your gifts to the dealership during regular business hours and help make sure every child can wake up to gifts Christmas morning!

# Ryan

MOTORS

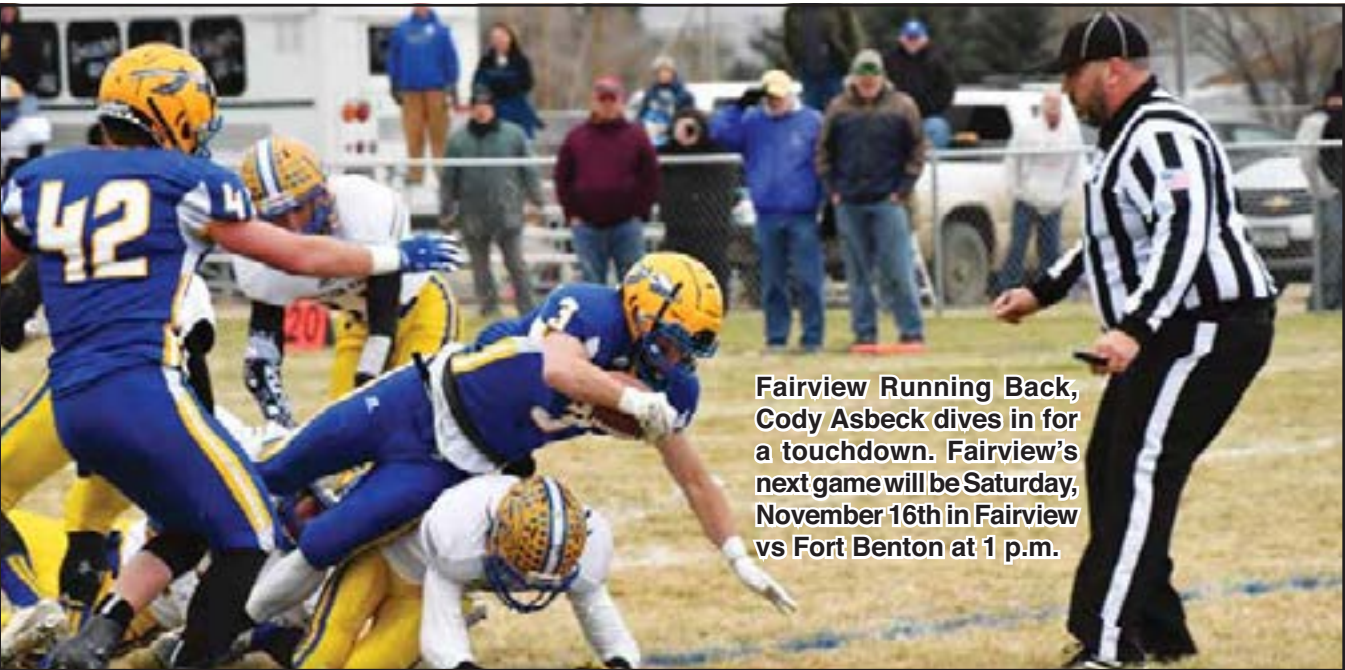
"Where Dreams Are Delivered 4 Wheels At A Time"



1212 W 2nd St • Williston, ND | 701-577-1111 • 1-800-568-5160 | [www.ryanchryslerdodgejeep.net](http://www.ryanchryslerdodgejeep.net)



## Fairview Warriors Win Second Round Football Playoff Game 66-6 Against Thompson Falls



Fairview Running Back, Cody Asbeck dives in for a touchdown. Fairview's next game will be Saturday, November 16th in Fairview vs Fort Benton at 1 p.m.



Fairview Running Back (left), Brady Buxbaum runs the ball into the end zone for a touchdown.

## Deer Or Elk Tested For CWD...

Continued from page 9A.

are areas where CWD is known or suspected to be present. Whole heads, carcasses, brains and spinal columns of animals harvested within those zones cannot be taken out of them, to prevent the spread of CWD. The Southern CWD Management Zone includes HD 704 south of Hwy 212, HDs 502 and 510, that portion of HD 520 east of Hwy 212, that portion of HD 575 north and east of Hwy 78, that portion of HD 590 south of Interstate 90, plus the communities of Billings, Broadus, and others on the defined boundaries.

The following carcass parts CAN be removed from a CWD Management Zone:

- Meat that is cut and wrapped or meat that is boned out
- Quarters or other portions of meat with no part of the spinal column or head attached
- Hides with no heads attached
- Skull plates or antlers with no meat or tissue attached
- Skulls that have been boiled and cleaned to remove flesh and tissue
- Upper canine teeth
- Head, partial body or whole-body mounts prepared by a taxidermist

Evidence of the animal's sex does not have to be attached to any part of the carcass but cannot be destroyed and should accompany the animal from field to point of processing.

FWP recommends taking simple precautions when field dressing deer, particularly in CWD Management Zones:

- Wear rubber gloves and eye protection when field dressing your deer.
- Minimize the handling of brain and spinal tissues.
- Wash hands and instruments thoroughly after field dressing is completed.

• Avoid processing and consuming brain, spinal cord, eyes, spleen, tonsils and lymph nodes of harvested animals. (Normal field dressing coupled with boning out a carcass will essentially remove these parts.)

Carcass dumping is illegal, unsightly

Hunters are strongly encouraged to dispose of hides, bones and trimmings at approved landfills in the area they hunt or to leave the spinal column at the kill site (with landowner permission if on private land.) If they bring the whole head to a check station or FWP office for sampling, FWP will dispose of the head. FWP strongly discourages dumping of carcasses or parts near roadways and other areas where hunters do not have permission. It is unsightly and illegal, and if the animal has CWD, the carcass can transmit the disease for at least two years.

For more information on CWD, visit the FWP website at [fwp.mt.gov/cwd](http://fwp.mt.gov/cwd).

**Start Your Rewarding Career Today!**

# AD SALES CONSULTANT

Must be motivated and a self-starter. Reliable vehicle necessary.

Full-time with excellent income potential. Sales experience a plus, but not required.

**Apply at the Sidney Job Service.**

**The Roundup**

111 West Main • Sidney, MT  
406-433-3306



## Roundup WEB.COM

MOBILE FRIENDLY

### Winter Classes Open For Registration

For details and to register, visit [www.handyandynursery.com](http://www.handyandynursery.com) or our Facebook page

Nov 16	Modern Brass Wreath
Nov 19, 21 & 23	Holiday Outdoor Pots
Nov 30	Sven The Gnome
Dec 3, 5 & 7	Christmas Wreath
Dec 10	Christmas Swag
Dec 21	Christmas Centerpiece

*Holiday Decor Is Here!*

Trees & Greens  
Arrive Nov 18th

Monday - Friday: 9am - 6pm  
Saturday: 9am - 5pm  
3515 West Front St  
Williston, ND | 701-572-6083

**Handy Andy's**  
Since 1952 Nursery

# Dash away to Billings.

'Tis the season to connect with family and friends on a fast flight from Northeastern Montana to Billings and beyond. Enjoy the holidays, and the ride.



Havre  
Glasgow  
Wolf Point  
Sidney  
Glendive  
Billings

from **\$29** each way



**Cape Air**  
Enjoy the ride.

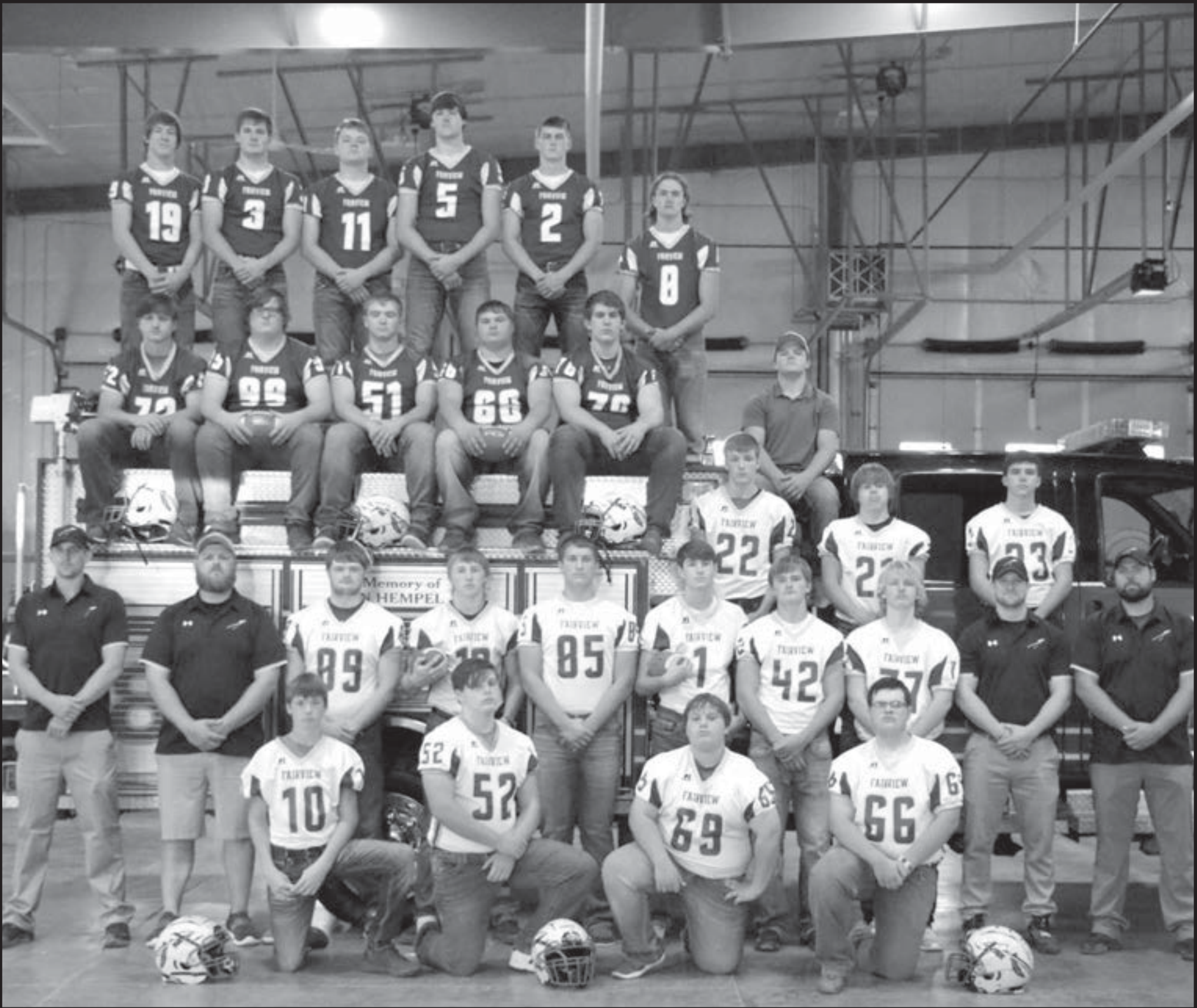
[capeair.com](http://capeair.com) 800-CAPE-AIR

\*Including all taxes and fees. Fares are subject to availability and other conditions. Fares may change without notice, and are not guaranteed until ticketed.



# FAIRVIEW WARRIORS VS FORT BENTON SEMI-FINAL FOOTBALL PLAYOFFS

Saturday, Nov. 16 • 1 pm • Fairview High School



## Fairview Football

**Left to right:** Alex Schriver, Cody Asbeck, Gabe Schipman, Braiden Taylor, Jesse Selting, Josh Herron, Tom Neu, Will Smies, Ethan Neu, Hunter Whitmus, Dylan Elletson, Lak Klokner, Jace Vitt, Steve Rice, Martin Manuel, Coach Greg Taylor, Coach Keith Bieber, Paul Hardy, Brady Buxbaum, Hunter Sharbono, Kanyon Taylor, Easton Hopes, Dylan Lorenz, Coach Josh Taylor, Coach Levi Seitz, Jace Buxbaum, Riley Bushnell, Walker Whitmus, Jack Smies

**406-742-5224**

**Water Hole #3**

Fairview, Montana

416 S. Ellery

Good Luck All Area Teams!

**TRIPLE**

**DISPOSAL**

776-2500

SAVAGE, MT

Jim & Rebecca Miller

**HURLEY'S**

OILFIELD SERVICES

- Potable Water • Sewer System
- Loaders • Communications
- Backhoe • Trucking
- Skid Houses • Porta Potties

Dispatch: 701-844-1234

Fairview, MT

**Gem City Motors**

BUICK CHEVROLET GMC

2019 GMC SIERRA 1500

UP TO \$11,000 OFF

703 S. Central • Sidney

**406-433-3120**

www.gemcitymotors.com

**Miller's**

Garbage Service

Savage, MT

**406-776-2334**

**NEU'S SUPERVALU**

- Grocery • Bakery
- Fresh Meat • Beer
- Ice • Snacks
- Full Service Deli

406-742-5441

303 S Ellery St • Fairview, MT

**pepsi**

Pepsi-Cola of Sidney

406-433-3403

**Case Implement**

2429 W. Holly St.

**406-488-4400**

GOOD LUCK FAIRVIEW WARRIORS!

Call 742-5261 for Your Appointment Today!

**MONDAK FAMILY CLINIC**

601 S. Ellery Ave • Fairview, MT

M-TH: 8:30am - 5pm  
Fri: 8:30am-Noon

**NEU CONSTRUCTION, INC.**

- Oil Field Roads & Locations
- Reclaim Work
- Gravel & Scoria Hauling

Fairview, MT

**406-742-5549**

neuconst@midrivers.com

**Merchants Bank**

Open 9am - 4pm  
Monday - Friday

Box 465 • Fairview, MT

406-742-5203

**FDIC**

**Sidney Sugars**

**Mon-Kota, Inc.**

Fertilizer & Irrigation Sales & Service

**Reinke plus program**

Fairview, MT • 701-844-5300

**Reinke**

MORE RIGHT THAN RAIN

Open 9am - 9pm Daily

**Parlee GOLF**

Call Ahead For Tee Times

**Private Parties Welcome**

205 Jennison Drive

Fairview, MT

406-742-3630

**DOORBUSTN**

Portables & Septic Service, LLC

- Portable Toilet Rentals
- Septic Pumping & Installation

- Jetting Frozen Sewer Lines
- Pump Repair & Replacement • Snake Jobs
- Camera-Locate Sewer Lines
- Pipe Burst Sewer Lines • Troubleshooting

Office: 406-433-7586 • Fax: 406-433-7596

Service: 406-489-0915

PO Box 1003 / 34980 Hwy 23, Sidney, MT

**HOTEL ALBERT**

Lounge & Casino

419 S. Ellery

Fairview, MT

406-742-5164

**Powder Keg PIZZA**

Family Dining

Open 4:30 pm Tue-Fri

2 pm Sat & Sun

Fairview • 406-742-5180

**DOUBLE BARREL SALOON & CASINO**

Open 10am - 2am Daily

401 Ellery Avenue

Fairview, MT

406-742-8110

**Steakhouse Hours:**

Sun-Thurs: 5-9pm

Fri & Sat: 5-10pm

**Builders FirstSource**

ProBuild, LLC

100 14th Street SE

Sidney, MT

406-433-2012 • www.bldr.com

M-F: 7am - 5pm • Sat: 8am - 1pm

**Richland Pump & Supply**

(406) 488-8706

David Williams

Cell (406) 489-8706

Scott Ramus

Cell (406) 489-8707

1511 S Central Ave • Sidney

**PLAY TO WIN!**

From the Fairview School Board, Administration & Staff

**FAIRVIEW WARRIORS**

**GOLD RUSH CASINO**

504 South Ellery

Fairview, MT

Lounge: 742-4653 • Office: 742-4654

Open From 10am - 2am

**The Roundup**

A DARN GOOD LITTLE NEWSPAPER!

Sidney, Montana

406-433-3306



# Public Auto Auction

[WillistonAuto.com](http://WillistonAuto.com)

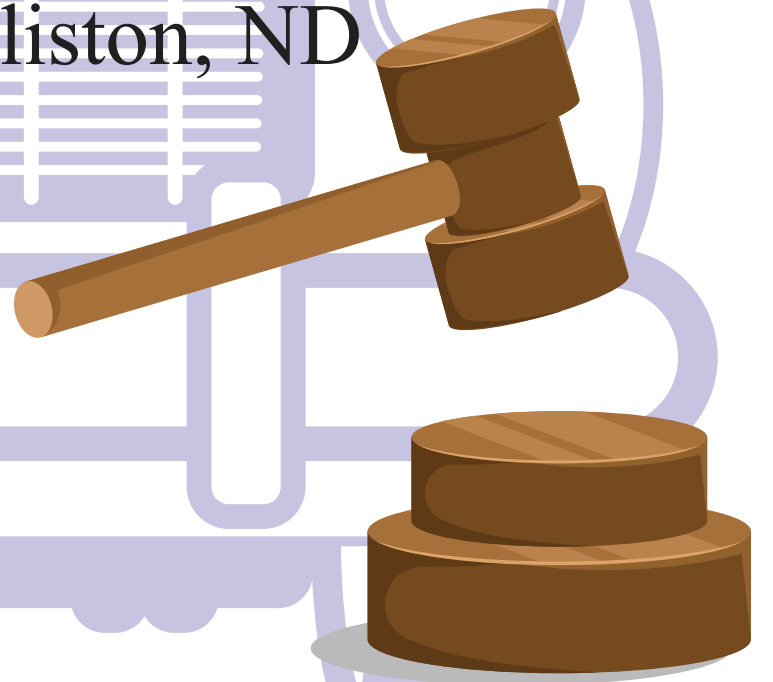
3409 2nd Ave. West Williston, ND

Contact Our Auction Coordinator

Email: [auction@willistonauto.com](mailto:auction@willistonauto.com)

Ph: 1.701.577.1020 Ext 4

1.701.713.5716



## Indoors

### At Our Lifted Truck Location

3904 2nd Ave W • Williston, ND

(Across from Walmart)

701-577-1020 or 701-713-5716

## Sat, Dec 7 • 1pm

**Cutoff is Wed, Dec 4 at 5pm**

**Preview from now until sale time**

- Your vehicles will be previewed at auction site
- We do all state & federal legal paperwork
- Safe & secure
- \$200 sale fee, 1% Auctioneer fee (no cost if your item doesn't sell)

Sale Conducted by  
**Stevens  
Auctioneer  
Services**  
Williston, ND

## WillistonAuto.com



CHEVROLET



BUICK

