

# The Roundup

PRSRT STD

U.S.  
POSTAGE  
PAID

The Roundup

(406) 433-3306 or 1-800-749-3306  
Fax (406) 433-4114  
e-mail address:  
info@roundupweb.com  
www.roundupweb.com

Business Office:  
Located at 111 West Main  
Sidney, MT

Mailing Address:  
P.O. Box 1207  
Sidney, MT 59270

Wednesday, September 10, 2014

Volume 40 • Number 30



Strong winds caused damage to RVs and a mobile home at Tobacco Gardens Resort near Watford City last Wednesday. The National Weather Service in Bismarck reported that three RVs sustained significant damage with one that was toppled. There were no injuries reported. An emergency management storm survey determined high winds approaching 70 mph caused the damage.



## Wind Wreaks Havoc at Tobacco Gardens Resort

## 3<sup>rd</sup> Annual Parade of Homes September 28



By Dianne Swanson

The 3<sup>rd</sup> Annual Parade of Homes will take place from 10 am to 4 pm, Sunday, September 28 with homes ranging from contemporary to western log. This fundraiser for the Boys and Girls Club of Richland County has become the premiere opportunity to view a wide variety of homes, get some fantastic building and remodeling ideas and become acquainted with local contractors and their talents.

Organizer Brenda Larson of Creative Solutions is delighted with the selection of homes this year. "We have a condo, split levels, and a multiple story home," she said. Every home has special features such as fabulous custom artwork on the walls, a bedroom featuring car racing, a log stair rail, massive fireplaces, custom tiled showers, beautiful glassware and art, an amazing arched bridge connecting two sections, outdoor wraparound decks, and much more. Both urban and rural homes are included in the tour.

Larson wished to thank all the homeowners who have graciously agreed to open their homes for this special event. The homeowners are: Andrea & Dick Davidson, Shanna & Steve Lunderby, Cindy Mead, Sharon Rau, Jackie and Jerry Schlenz and Fran & Sam Syth.

The Parade of Homes is a self-guided tour. Participants may start at any home, at any time.

Tickets are available now for \$15 each. Purchase yours at TriFecta Home Center, 1051 S. Central Ave., Sidney, 406-433-9898; Creative Solutions, 109 3<sup>rd</sup> Ave. NE, Sidney, 406-488-1461; The Sidney Herald, 310 2<sup>nd</sup> Ave. NE, Sidney, 406-433-2403; Boys and Girls Club of Richland County, 200 3<sup>rd</sup> Ave., SE, Sidney, 406-433-6763, president Marissa Schoepp, 406-433-1810.

Tickets will also be available for \$20 at Creative Solutions the day of the show beginning at 9am. A book featuring the homes, a map, and rules and regulations for the tour are included in the ticket price. Tickets will be punched at each home and entered into a prize drawing at the end.

Larson has been in the building business in Sidney her entire life and is pleased to promote local businesses while raising funds to help the Boys and Girls Club build a new home. Anyone wishing to advertise in the tour book may call her at 406-488-1461 by September 12.

## Walking to Wellness

The sixth annual Walking to Wellness will have an exciting new addition to this year's event. This year teams are welcome to participate. Teams will utilize the same course as the individual participants. Each team member can walk or run their assigned "leg" of the race. The whole team can share the final victory lap.

Patti Iverson, who organized the first Walking to Wellness event explained, "This event has always been about promoting fitness at every level of experience. This event stands apart because we encourage both running and walking. It is not competitive. The addition of a team relay is a perfect fit for us".

The relay will utilize the same course as the individual participants who are walking or running. One "lap" on the course is approximately 5 km, or 3.1 miles. Teams can divide the course up in any way they want. If you want each person to walk or run ¼, ½ or a full lap...volunteers will help to station your team at the necessary checkpoints. Teams can choose to complete a 5k, 10k or ½ marathon.

## Sidney Health Center "Live it up!" Event for Local Women Sept. 15

Submitted by Toni Zieske

Sidney Health Center will host its annual "Live it up!" event for women on Monday, September 15 with a focus on stress relief and laughter. The program for the evening will be "Help! My Life is a Game of Twister!"

Once again, the evening promises to be fun, educational and entertaining. The festivities will kick off at the Richland County Fair Event Center with a vendor fair at 4:30 p.m. featuring various independent distributors offering goods ranging from home décor to jewelry to gourmet food products. A light menu including appetizers, finger foods and refreshments will be served beginning at 5:30 p.m. followed by an entertaining, motivational presentation by guest speaker, Mary Pierce at 7:00 p.m.

Mary Pierce is a funny motivational speaker from Wisconsin who tickles the funny bone as she touches hearts, offering wit and wisdom to community audiences at women's health and wellness events across the country. She offers an entertaining and positive motivational message, inviting audiences to laugh along and learn with her multi-media presentation filled with comic relief, practical teaching, and a powerful message of hope and encouragement.

In her keynote presentation, Pierce takes a hilarious look at the Twister game of life. Audience members will learn practical tools for untwisting themselves, gaining new perspective and finding greater peace.

To take part in this fun, educational program individuals must be at least 21 years of age. All "Live it up!" events are designed to empower women to live life to the fullest by encouraging them to care for themselves and the ones they love.

Tickets are available at Sidney Health Center's Caring Corner Gift Shop for \$20.00 per ticket prior to the event and \$25.00 at the door. Reserved tickets are also available for \$150 for six tickets through the Marketing and Communications Department. Call today to reserve your table at (406) 488-2595 or 488-2101.

## Adds a Team Relay

5k walk/run (3.1 miles)  
10k walk/run (6.2 miles)  
Half Marathon (13.1 miles)

### Event Details

The event will be held on Saturday, September 20. Registration begins at 7 a.m. and the relay starts at 8 a.m. Break stations with water and a light snack will also be available throughout the course. Volunteers will be on hand throughout the course to answer questions or provide any needed assistance.

### Registration

Stop by the Foundation for Community Care office at 2212nd Street NW. You can pre-print your forms online at [www.foundationforcommunitycare.org](http://www.foundationforcommunitycare.org) if you choose.

Registration is \$25 per person - \$20 per person for a team of 4 or more. Registration includes at-shirt and swag bag. All funds raised from the event will benefit the Foundation for Community Care and the Boys & Girls Club of Richland County.



For all your Farm/Ranch,  
Recreational, Residential,  
and Commercial needs.

Jim & Janice Knudsen  
Broker/Owners  
email: [alans@midrivers.com](mailto:alans@midrivers.com)  
Website: [www.missouririverrealty.com](http://www.missouririverrealty.com)



Alan  
Seigfreid  
Amanda  
Seigfreid

120 2<sup>nd</sup> St. N.E. • Sidney Mt. 59270  
(O) 406-433-3010 • (C) 406-489-3010

# Unreal RC

The Ultimate in Remote Control Hobbies

Brushless Electric -  
Greater Speed and Reliability

**GAS & ELECTRIC CARS, TRUCKS,  
PLANES, BOATS AND HELICOPTERS**

**701-577-1032**

Located In  
**Chaney's Total Auto**





# Appliances

imagination at work®



Fridges • Stoves • Washers  
& Dryers • And More!



**Main Appliance**

**Appliances Sales Center**

Mon-Fri: 10am - 6pm | 406-433-1823 | 214 S. Central Ave • Sidney, MT

# A Radio That Will Fit Whatever You Drive!

## Starting at \$359




Call Larry Today At... 

# ADVANCED COMMUNICATIONS

Just North of McDonald's • Sidney, MT  
406-433-1659 • Toll Free: 1-866-433-1659

# STATISTICS



## LAKE WATER LEVEL REPORT

	Sakakawea	Fort Peck
Current Elevation.....	1845.2	2232.2
Last Week's Elev. ....	1845.0	2229.7
One Year Ago .....	1834.7	2239
Release For Day (C.F.S.) .....	28,000	6,400

## SIDNEY WEATHER DATA

Source: MSU Eastern Agricultural Research Center

Date	High	Low	Precip.
Sept. 1 .....	74	46	0.01
Sept. 2 .....	78	49	0.00
Sept. 3 .....	80	45	0.00
Sept. 4 .....	64	44	0.00
Sept. 5 .....	76	41	0.00
Sept. 6 .....	82	43	0.00
Sept. 7 .....	88	43	0.00
Average YTD Precipitation .....			1.24

# OBITUARIES

## Ricky Loftis, 64, Sidney, MT

Funeral services for Ricky Loftis, 64, of Sidney, MT were at 2 p.m., Saturday, September 6, 2014 at Fulkerson Memorial Chapel in Sidney, MT with Pastor Richard Evans officiating. Remembrances, condolences and pictures may be shared with the family at [www.fulkersons.com](http://www.fulkersons.com)

Ricky died on Monday, September 1, 2014 at the Sidney Health Center Extended Care.

## Producers Reminded of Important September 30<sup>th</sup> Non-Insured Crop Disaster Assistance Program Deadline

**Submitted by Kayleen Peters**

Montana agricultural producers who have not yet purchased their 2015 Non-Insured Crop Disaster Assistance Program Coverage for all Perennial Forage, Grazing, and Fall-Seeded Crops are reminded that the September 30<sup>th</sup> deadline is fast approaching. To purchase your 2015 NAP Coverage, please contact your local county FSA office right away.

MNAXLP

## Upcoming IVN Session in Watford City for Parents Becoming a Love & Logic Parent Series

**By Marcia Hellandsaas**  
**NDSU Extension Agent, McKenzie County**

Is being a parent draining your energy? Parents of tots to teens use these Love & Logic strategies to energize. Reduce the nagging and complaining from your children, promote thinking and responsibility, and give consequences with empathy. Put a laugh back into your parenting in this six- week IVN series!

Become a Love & Logic parent starts on Wednesday, September 10 and continues for five more Wednesdays: Sept 17, 24 and October 1, 8 and 15 at the McKenzie County Extension Service at 205 6<sup>th</sup> Street NW (located behind the Courthouse in the Rural Water/Economic Development Building) in Watford City from 6:30 to 8:00 pm CT.

Participants MUST register by calling the McKenzie County Extension Office at 701-444-3451 or emailing: [marcia.hellandsaas@ndsu.edu](mailto:marcia.hellandsaas@ndsu.edu). Pre-registrations are requested by Monday, September 8.

This program is provided through funding from the ND Department of Human Services – Children and Family Services.

## Kids First! Carnival Looking for Interested Vendors

**Submitted by Missy Smies**

The Richland County Family Resource Center is sponsoring the fifth annual Kids First! Carnival this fall. The Family Resource Center focuses on children, families, and education, bringing an exciting activity for families in the Sidney area to enjoy.

The carnival will be held Saturday, September 27, 2014 from 10:00 a.m. to 2:00 p.m. at the Richland County Fair Event Center. The groups are currently looking for community organizations to rent a booth for the carnival. We are looking for face painters, food vendors, carnival games and bounce castles. Booth rental will be \$20, and ticket sales will be reimbursed back to the organizations. This is a great opportunity to do a fundraiser, as well as taking part in a fun, safe and exciting community event for families!

For more information on booth rental or sponsorship of the event, contact Missy Smies at 433-4097 or [missysmies@outlook.com](mailto:missysmies@outlook.com). We are looking forward to working with you on this wonderful event for our community!

## Chip Carving and Genealogy Classes Sept. 28 & 29

An example of Norwegian carving done by Hans Stoken of Lewistown.



**Submitted by Charlotte Anvik**

Have you ever wanted to learn how to trace your family tree? Now is your chance! Sidney Sons of Norway Lodge is sponsoring a Genealogy Class and a Chip Carving Class on September 28 and 29. Teachers from Helena, MT will be teaching these classes, and the public is invited to attend. All tools and materials will be provided for the carving. Cost is \$15.00 per person. Registration is needed by September 15. Space is limited, so register early to assure a place. Cost for the genealogy class is \$5.00 per person. For more information and to register for either class, call Charlotte Anvik at 406-488-6522 or Sig Rudie at 406-747-5726.

# EVENTS

SEND US YOUR EVENTS!  
THE ROUNDUP: PO Box 1207  
111 West Main • Sidney, MT 59270  
406-433-3306 • Fax: 406-433-4114 • Email: [classads@esidney.com](mailto:classads@esidney.com)

## Richland County

Events in Sidney unless otherwise listed. MT Zone.

**Tues., Sept. 9**  
**7 p.m.** - Business meeting, 714 East Main, all Sons of Norway members are welcome.

**Wed., Sept. 10**  
**1 p.m.** - AARP Smart Driving Course Sidney, MT. Allen H. Peterson, Instructor, DC. Church of Christ at 905 4th ST SW in Sidney, MT. To register you need to call or stop at Church of Christ office with your AARP card, if you are a member and cost of \$15.00, and your Drivers License card to have one or both photo'd for getting registered. The non-member fee is \$20.00. Limit to 30 people. If you have any questions or want to register with me send or e-mail to: Allen H. Peterson, Instructor/trainer, 406 787 5373 e-mail [ahp-emp@nemont.net](mailto:ahp-emp@nemont.net) PO Box 263 Culbertson, Mt. 59218.

**Fri., Sept. 12**  
**9 a.m - 12 p.m.** - Senior Commodities will be distributed at the back door of the Nutter Building 123 W., Main. Message phone is 406-433-4353.  
**11:30 a.m.** — Sidney Senior Citizen Center will be hosting a meal. For more info call 406-433-8077.  
**6:30 p.m.** – 5 stone drug and alcohol recovery meeting, Sidney Church of Nazarene, 606 9th ST. SW, back door is open.

**Sat., Sept. 13**  
**7:30 a.m. - Noon** - Richland County Farmer's Market. Richland County extension parking lot (1499 N Central Ave, Sidney)

**Sun., Sept. 14**  
**1:30 p.m.** - The annual meeting of the MonDak Historical and Art Society. The annual meeting is when you find out what is happening in the upcoming year, recap of last year and vote for new members of the Board of Directors.

**Mon., Sept. 15**  
**11:30 a.m.** — Sidney Senior Citizen Center will be hosting a meal. For more info call 406-433-8077.

**Mon., Sept. 15**  
**4:30 p.m.** - Live It Up and laugh with Mary Pierce at the Richland County Fair Event Center as she takes a hilarious look at the Twister Game of Life. You'll learn practical tools for untwisting yourself, gaining a new perspective and finding greater peace. Tickets available at the Caring Corner Gift Shop. Ticket prices: \$20 in advance, \$25 at the door. Call 488-2595 for reserved seating: \$150 a table (6 tickets).

**Sat., Sept. 27**  
**10 a.m. - 2 p.m.** - Kids First Carnival! Looking for interested vendors. Richland County Fair Event Center. The groups are currently looking for community organizations to rent a booth for the event. Also, face painters, food vendors, carnival games and bounce castles. Booth rental will be \$20, and ticket sales will be reimbursed back to the organizations. For more information on booth rental or sponsorship of the event, contact Missy Smies at 406-433-4097 or [missysmies@outlook.com](mailto:missysmies@outlook.com).

**Sun - Mon., Sept. 28 - 29**  
Chip Carving and Genealogy Classes. Teachers from Helena, MT will be teaching these classes, and the public is invited to attend. All tools and materials will be provided for the carving. Cost is \$15.00 per person. Registration is needed by September 15. Space is limited, so register early to assure a place. Cost for the genealogy class is \$5.00 per person. For more information and to register for either class, call Charlotte Anvik at 488-6522 or Sig Rudie at 747-5726.

## McKENZIE COUNTY

Events in Watford City unless otherwise listed. CT Zone.

**Tues., Sept. 9**  
**7 p. m.** - Pinochle will be held in Watford City at the Senior Citizens Center every first and third Tuesdays until spring. Any further questions please call Maddline at 701-570-4394.

**Thurs., Sept 11**  
**10 a.m. - 2 p.m.** - Tervita Blue Buttes Open House. The Chamber will do a ribbon cutting at noon. Tervita Blue Buttes Landfill is located at 2953 108th Ave NW in Keene. More info is on the events page of the Chamber website.

**Thurs., Sept. 11**  
**7 p.m.** - History Book Club at the Confluence "38 Nooses" book for discussion.

**Thurs., Sept. 11**  
**12 p.m. - 2 p.m.** – McKenzie Co. Food Pantry, lower level of the First Lutheran Church, 212 2nd Ave. NW, Watford City, Cash Wise food giveaway, for more info or to set up an appt. call 701-444-3451 or [www.mcfoodpantry.com](http://www.mcfoodpantry.com).  
**7 p.m.**– Pinochle, Watford City Senior Center, 205 5th St. NW, for more info call 842-3760.

**Sun., Sept. 14**  
**3 p.m.** - Flag Lowering Ceremondy at Ft. Buford with the 6th Infantry.

**Mon., Sept. 15**  
**4 p.m.** - Wine on the Nine Social and Golf Scramble at Fox Hills. Cost is \$50 and includes: 9 holes of golf, cart rental, food and drinks.

**Tues., Sept. 16**  
**5 - 7 p.m** – McKenzie Co. Food Pantry open, First Lutheran Church, 212 2nd Ave. NW, Watford City. For more info call 701-444-3451.

## OTHER SURROUNDING COUNTIES

Events at the Confluence unless otherwise listed are CT Zone.

**Wed., Sept. 17**  
**Noon** - Please join Glendive Friends of the Library, for our September Lunch 'n' Learn. We will have "Growing A Passion Into A Business". Katelynn Eslick from Sugar Plum Jewelry will talk about how she has developed a business from her passion for making jewelry.

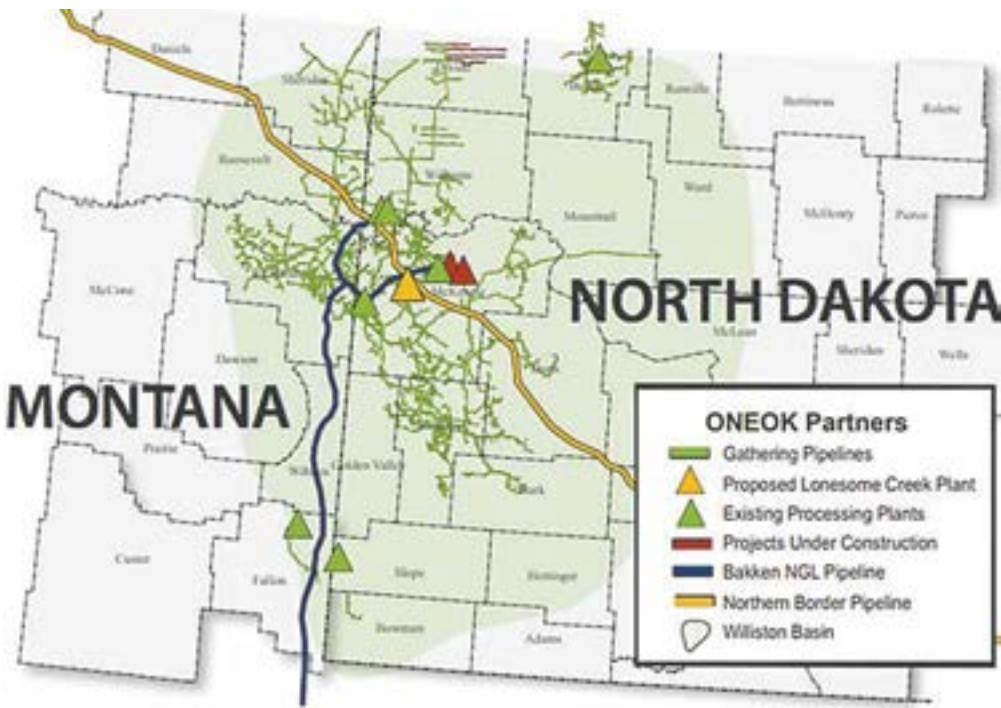
## Notice

MNAXLP

View all monthly events on our calendar at: [www.roundupweb.com](http://www.roundupweb.com)



# ONEOK Partners Completes Garden Creek II Natural Gas Processing Facility



**By Tie Shank**  
In a press release on August 26, 2014, ONEOK announced that its 100-million cubic feet per day (MMcf/d) natural gas processing facility in eastern McKenzie County in North Dakota – the Garden Creek II plant – is now operational.

ONEOK Partners is the largest independent operator of natural gas gathering and processing facilities in the Williston Basin, with a natural gas gathering system of more than 6,500 miles and more than 3 million acres where production is dedicated to its systems.

Terry K. Spencer, president and chief executive officer of ONEOK Partners stated, “ONEOK Partners’ Williston Basin natural gas processing capacity now exceeds 500

MMcf/d – five times more than our processing capacity in the region was in 2010 – and we expect that number to grow to more than 600 MMcf/d during the fourth quarter of this year, when the Garden Creek III plant is completed. Increased natural gas processing also will lead to a reduction of natural gas flaring in North Dakota.”

The partnership’s Williston Basin natural gas processing capacity is expected to increase to approximately 1.1 billion cubic feet per day (Bcf/d) by the third quarter 2016 following the completion of additional natural gas infrastructure in the region, including:

1. The Garden Creek III plant – which is expected to be completed in the third quarter

2014.

2. The Lonesome Creek plant – which is expected to be completed in the fourth quarter 2015.

3. The Demicks Lake plant – which is expected to be completed in the third quarter 2016.

The construction of additional natural gas compression to take advantage of additional natural gas processing capacity as a result of better than expected plant performance – which is expected to be completed in the fourth quarter 2015.

Spencer adds, “Pending board approval, we expect to announce additional Williston Basin natural gas processing capacity by the end of this year.”

## Upper Cut Salon Opens in Sidney

**By Meagan Dotson**  
The Upper Cut Salon located at 345 22<sup>nd</sup> Ave NW in Sidney, opened its doors to clients August 18<sup>th</sup>. Owner, stylist and nail and lash tech. Courtney McIntyre reports that even though the business has only been open a short time, they’ve been extremely busy.

Briana Wilcoxon, Mandi Heinle, Britta Torgerson and McIntyre provide a range of services including cuts, color, styling, manicures, and eyelash extensions. Tammy Kunda, certified out of Williston State College, is also taking appointments as the salon’s massage therapist.

“The best part about my job is when I flip the chair around and I see that twinkle in

their eyes. I like making people feel beautiful,” said McIntyre. When she saw an opportunity to start her own business she moved forward.

“I felt like there was a definite need for another salon,” said the Sidney native. “There were a lot of nail techs that had nowhere to go because other salons were already full.”

With the support of her family, McIntyre, who graduated from the Bold Beauty Academy in Billings, MT, awaited a four-month renovation before the space was ready to open. Hair products available for purchase are Indie, AG, It’s a 10 and Bed Head and they also sell body jewelry.

Just across the street from Millers’ Corner, the sa-



Courtney McIntyre

lon is open from 10am-5pm Monday through Friday and by appointment on Saturdays. Walk-ins are welcome. To schedule an appointment, they can be contacted via Facebook at Upper Cut Hair and Nails.

## Mix It Up!

**Steak Night : Fri, Sept. 12**  
**Mexican Fiesta: Fri, Sept. 19**  
Serving 6-10pm  
Everyone Welcome!



Catering At The Elks Lodge  
123 3rd St. SW, Sidney  
Call 406-433-5005 For Reservations

**Roundup**  
**WEB.COM**  
Everything  
Roundup on  
the web.

## New Homes Available!

**Serving the region for 90 years!**

- Providing full service construction including site work.
- 2, 3 & 4 bedroom models available.
- Garages, driveways, sidewalks, & patios.
- Attic & basement models available.
- Land/home packages available in Williston.

**For more information on our premium quality homes, give us a call today!**

**ND Sales 701-847-7047**  
**MT Sales 888-710-0642**

**piercehome.com**



**POP** on over, the **FAMILY FUN** begins behind the magenta pink door!

**PARTY CENTRAL**

**Look Who's 30!**  
Celebrate With Us!

**Store Specials Sept. 9<sup>th</sup> – Sept. 12<sup>th</sup>**

- Over The Hill (30s – 60s)
- Ages To Celebrate ( 13 – 100)
- Tableware • Gag Gifts
- Balloons • Banners & More!

**OPEN TUES-FRI: 10AM - 5:30PM • SAT: 9AM - 4PM (CLOSED SEPT 13)**

**105 East Main Street • Sidney, MT | 406-433-4FUN | www.partycentralandgifts.com**

Like Us On facebook

**SIDNEY HEALTH CENTER**  
Exceptional Care for Life

**Live It Up!**  
...for Women of All Ages

**Monday, September 15**

**HELP! MY LIFE IS A GAME OF TWISTER**

**Keynote Speaker MARY PIERCE**

**PROGRAM SPEAKER:**  
Mary Pierce  
7:00 PM

**VENDOR FAIR**  
Featuring Home Distributors  
4:30 PM

**SOCIAL TIME**  
Hors d'oeuvres & Beverages  
5:30 PM

**Tickets Available at Caring Corner Gift Shop**

**TICKET PRICES:** \$20.00 in Advance • \$25 at the Door  
Call 488-2595 for RESERVED SEATING: \$150 Table (6 tickets)

**RICHLAND COUNTY FAIR EVENT CENTER • SIDNEY, MT**

**SIDNEY HEALTH CENTER HOSPICE**

**Camp Mend a Heart**  
For kids who have suffered a loss

**A Bereavement Day Camp for kids ages 6-18 years old**  
**Saturday, September 13, 2014**  
**From 8:30 AM to 4:00 PM**  
**Church of Christ**  
**905 4th St. SW • Sidney, MT**

The annual Children's Mend-a-Heart Day Camp is set for Saturday, September 13 at the Church of Christ in Sidney. The day camp will focus on bereavement and is intended for children, ages 6-18, who have experienced a loss. There will be crafts, activities, lunch and fun. The camp is free of charge. Please call the Sidney Health Center Hospice office at 488-2138 to register by Thursday, September 11.

**SIDNEY HEALTH CENTER HOSPICE**  
PHONE: 406-488-2138



# IT'S FOOTBALL SEASON!

**12 New TVs**  
**NFL Network & Redzone**

**Pick The Pros**  
Pick Em' Best All Season  
Win \$500 - Free To Play

Late Nite Menu Fridays & Saturdays • 10pm - 12:30am

## Stadium Food

**Only Available Sundays • Noon - 10pm**

- Nathan's Hot Dogs**  
World Famous .....\$2
- Nathan's Chili-Dogs**  
World Famous, topped with homemade chili & minced onions .....\$2<sup>50</sup>
- Nathan's Chili-Cheese Dogs**  
World famous, topped with homemade chili, nacho cheese & minced onions .....\$3
- Stadium Nachos**  
Fresh fried chips, topped with taco meat, nacho cheese, onions, tomatoes, black olives, sour cream & salsa.....\$4
- Wings (Bone-In)**  
Asian, Buffalo, Naked or Teriyaki .....\$1 each
- Slammers**  
Mini-Cheeseburgers.....\$2 each
- Chili Cheese Fries**  
Crispy French Fries, topped with homemade chili & nacho cheese.....\$3
- Cheese Fries**  
Crispy French fries, topped with nacho cheese .....\$2<sup>50</sup>
- French Fries**  
Crispy French fries .....\$1<sup>50</sup>

## Stadium Beverage Specials

**Only Available Sundays • Noon - Close**

- "Montana Made" Micro-Brew Pitchers.....\$14**  
Jack's 90 Scottish Ale, Red Lodge, MT  
Helio Heffe, Red Lodge, MT  
Red Headed IPA, Beaver Creek, Wibaux, MT  
Octoberfest, Red Lodge, MT
- Domestic Pitchers.....\$10**  
Bud-Lite or Landshark
- Bloody Mary'.....\$3**
- Caesar's .....\$4**
- Mimosa .....\$7**
- "Garfield's" (house-made chelada beer).....\$3**
- A&W Rootbeer Float.....\$3**
- Please Enjoy Yourself & Drink Responsibly!**

**Cattle·ac**



**www.cattleac.com**  
**406-433-7174 • Sidney, MT**  
**Casino • Steak House • Bar**



## Wolf Pup Daycare Holds Bubble Dash Fundraiser



Participants in the first ever "Bubble Dash" in Watford City, dashed through the bubbly tents to raise money for the new Wolf Pup Daycare on Sept. 6. There were over 100 Dashers that participated and they raised \$1934.96 for the new Wolf Pup Daycare. They are hoping to make it an annual event. (Photos by Kathy Taylor)



## MT Pork Producers Council Offers PEDv Disease Update Seminar in Sept.

Submitted by Randy Schmoldt

Montana Pork Producers Council (MPPC) is offering a Porcine Epidemic Diarrhea Virus (PEDv) Disease and Update Seminar for producers in September. The program begins with a luncheon at 12:30pm, September 16<sup>th</sup> in Great Falls at the Best Western Heritage Inn's Convention Area. The seminar provides a timely educational update on the destructive porcine disease prior to the colder weather environment that contributes to a higher number of cases nationally. Program partners include the Montana Department of Livestock and Prairie Livestock Supply. Primary presenters include Dr. Steven Dudley of Prairie Livestock Supply and staff members of the Montana Department of Livestock. "After MPPC provided similar update sessions in June, Montana's producers requested a second dose of disease education to help them keep up with new developments later in the summer. This meeting is for those that attended the June meetings as well as those completely new to the subject," says Anne Miller, Executive Director. "Our goal is to protect farms of all sizes from this virus by supplying producers with solid, current information." The seminar, including lunch, is free to all involved in pork production. Please contact the MPPC office to register for the program by Friday, September 12. MPPC's phone number is (406) 557-2982 and email is mtpork@midrivers.com. MNAXLP



**SOLD**

1,532 sq ft, 3 bed/2 bath, stone accent over range, entertainment center

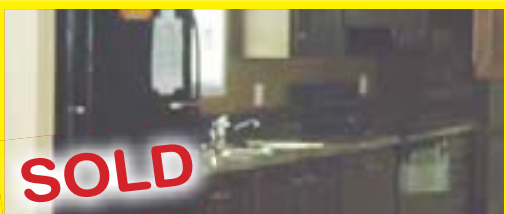
**\$89,995**



**SOLD**

2,040 sq ft, 3 bed/2 bath, 5/12 roof, huge master suite, upgraded throughout.

**\$152,643**



**SOLD**

1,240 sq ft, 3 bed/2 bath, chocolate cabinets throughout.

**\$50,995**



**New Arrival.** 1,140 sq ft, 3 bed/2 bath, antique look, white washed cabinets.

**\$49,995**



**New Arrival.** 1,140 sq ft, 16x76, 3 bed/2 bath, Cherry colored cabinets, Large kitchen dining area

**\$68,926**



**SOLD**

1,836 sq ft, 4 bed/2 bath, granite counter tops, kitchen with pantry.

**\$96,995**



**SOLD**

2,280 sq ft, 3/4 bed/2 bath, gorgeous kitchen rock accent, hickory cabinets throughout.

**\$139,995**



RV Model Cabin smart board siding, 7/12 roof, full-sized appliances, loft.

**\$52,995**



1,100 sq ft 3 bed/2 bath, front porch, all appliances, pantry

**\$67,995**



**SOLD**

2,280 sq ft, 4 bed/2 bath, beautiful kitchen rock accent, Jack & Jill bedrooms, master glamour bath and master retreat

**\$139,995**

### Two-Man Housing

Two private rooms, baths, kitchenettes and entries

**\$35,000**



**Come Take A Look At Our Excellent Selection & Order Yours Today!**

**Iseman Homes**  
YOU'RE HOME. NOW.

Mon-Wed-Thurs: 9am-7pm  
Tues & Fri: 9am - 6pm • Sat: 9am - 4pm  
2308 West Front St. Williston, ND | 701-572-2590



\*Price includes delivery within 100 miles, block & level.



# MFU Convention: Save the Date & Register Online

**Submitted by Sandy Courtnage**  
Montana Farmers Union (MFU) will celebrate its 99th year with its annual meeting and convention on September 23-25. The event will be held at the Heritage Inn in Great Falls, MT.  
“The convention theme, ‘MFU: The Face of Agriculture’ reflects our diverse membership,” said MFU President Alan Merrill. “Convention goers will enjoy a broad collection of speakers and workshop topics as well as debate MFU policy and enjoy some great entertainment.”  
A detailed agenda is posted on the MFU website. Some convention highlights include:

**Friday, October 24**  
M. Andy Junkin, author of ‘Farming with Family Ain’t Always Easy,’ will talk about how farm and ranch families deal (or don’t deal) with transition and change. Improving HOW families make decisions together is crucial. All registered participants will receive a copy of Mr. Junkin’s audio book for future reference. Highlights of past Junkin presentations are available on YouTube.  
MFU Women in Ag Calendar – The first edition of the MFU Women in Ag Calendar will debut. Meet the ladies involved in the project and learn about their roles in their operations. Calendars will be available for purchase and proceeds will support women’s educational programming.  
Terry Whiteside, Whiteside & Associates, will provide the latest rail transportation updates for all convention goers.  
Dr. Jeff Bader, Director of MSU Extension, Montana State University, will keynote the Farmers Union Insurance luncheon.  
**Saturday, October 25**  
MFU policy discussions continue and officer elections take place.  
Jeff & Katie Bangs, Farmers Union Enterprises Leadership couple, share their experiences of the past year.  
MT Lieutenant Governor Angela McLean keynotes the Education Luncheon.

**Workshops:**  
Ron de Yong, Director of MT Department of Agriculture, will share Past Accomplishments & Future Endeavors.  
Dr. Nate Bickford, University of Great Falls and Mike Dal-

ton, Sunburst Unlimited, will discuss their individual work in expanding local food availability and beginning farmer opportunities through community gardening and aquaculture growing experiments.  
Bill Evans, Director of the Chouteau County FSA, will discuss the Nuts & Bolts of the Farm Bill.  
Hertha Lund, Lund Law, will present a White Paper on Fracking in Montana, and Melissa Hornbein, attorney for the Dept. of Natural Resources & Conservation, will relate the latest information about water compacts in the state.  
Roger Johnson, National Farmers Union president, keynotes the MFU members banquet that will feature Montana grown and raised food.  
In addition to the extensive educational opportunities offered by the convention, MFU youth will be recognized for their leadership development throughout the year, a carnival and silent auction will benefit MFU educational programs and scholarships, and the Ringling 5 will top off Saturday evening.  
Editor’s Note: Discussions with Congressional candidates are ongoing concerning U.S. House and U.S. Senate debates to be cosponsored with the Great Falls Tribune. Details will be announced as they emerge.  
For almost 100 years MFU has worked for strong family farms & farmer co-operatives, has presented the organization’s policies to lawmakers and has provided education for all ages.

# Deer Season for Young Hunters Opens Sept. 19

**Submitted by ND Game & Fish**  
Friday, Sept. 19 at noon signals the start of a nine-and-a-half-day deer hunting season for youth ages 12-15.  
Licensed residents ages 12 and 13, and 11-year-olds who turn age 12 in 2014, are allowed to hunt statewide, but only for antlerless white-tailed deer. Resident deer gun hunters age 14 or 15, and 13-year-olds who turn age 14 in 2014, with a “youth season” license, can hunt statewide for any deer, except antlerless mule deer in units 3B1, 3B2, 4A, 4B, 4C, 4D, 4E and 4F. In addition, a special license is required to hunt antlered mule deer in those same units.  
After opening day, hunting hours are one-half hour before sunrise to one-half hour after sunset. Solid daylight fluorescent orange vests or coats, and hats are required for all young hunters and their adult mentors.  
Each youth deer hunter must be under direct supervision of an adult while in the field.  
In addition to the deer license, hunters must possess a general game and habitat license and hunting certificate.  
The youth deer season closes Sunday, Sept. 28.  
**Youth Waterfowl Weekend is Sept. 20-21**  
North Dakota’s two-day youth waterfowl season is Sept. 20-21. Legally licensed resident and nonresident youth waterfowl hunters age 15 and younger may hunt ducks, geese, coots and mer-

gansers statewide.  
The daily bag limit and species restrictions for the youth season are the same as for regular duck and goose seasons. Exception: the additional two blue-winged teal allowed during the first 16 days of the regular season are not allowed during the youth season.  
Resident and qualifying nonresident youth waterfowl hunters must possess a general game and habitat license and a fishing, hunting and furbearer certificate. Nonresidents from states that do not provide a reciprocal licensing agreement for North Dakota residents must purchase the entire nonresident waterfowl license package.  
In addition, all youth hunters must be Harvest Information Program certified, and youth ages 12 and older need to have passed a certified hunter education course. Hunters age 15 and younger do not need a federal duck stamp.  
Hunters who purchase a license through the North Dakota Game and Fish Department can easily get HIP certified. Otherwise, hunters must call 888-634-4798, or log on to the Game and Fish website at gf.nd.gov, and record the HIP number on their fishing, hunting and furbearer certificate.  
Shooting hours for the youth waterfowl season are one-half hour before sunrise to sunset. An adult of at least 18 years of age must accompany the resident youth hunter into

the field, and a licensed adult is required to accompany a nonresident youth hunter. The two-day weekend hunt does not count against a nonresident adult hunter’s 14-day regular season waterfowl dates.  
**Youth Waterfowl Trailer Available**  
The North Dakota Game and Fish Department and Ducks Unlimited co-sponsor a trailer full of waterfowl hunting gear that is available to families with young hunters.  
Purchased by the Game and Fish Department’s Encouraging Tomorrow’s Hunters Grant Program, the trailer is designed for families who don’t have the appropriate gear for their young hunters to hunt waterfowl. The equipment is donated by Avery Outdoors.  
Use of the trailer is free, and it is equipped with goose and duck decoys for field hunting, and two bags of floating duck decoys and marsh seats for hunting a wetland.  
For more information, or to reserve equipment, contact the Ducks Unlimited office in Bismarck at 701-355-3500.

**Ever thought about trying *THRIVE*?**

The new Derma Fusion Technology by Le-Vel Thrive can help you lose weight, energize your day, help with digestion & boost your mental clarity. It’s also gluten free!



**If you’re ready to change your life for the better, contact Angela Ekblad at:**  
aekblad\_1@hotmail.com  
or call: 701-570-3853

*More info at:*  
<http://www.camdylan.le-vel.com>

## Missouri Meadows Open House

Sunday, Sept. 14<sup>th</sup> • 11am - 6pm

**“Stop Throwing Your Money Away On Rent”**



County Rd. 9	55th Street NW	<h2>Win A 70" TV!</h2> <p>FREE Burgers &amp; Pop From 11am - 2pm</p>
	<b>Missouri Meadows</b> Just 4 miles east of Walmart	

**Missouri Meadows – Own a 1-acre lot & a new modular home in a beautiful, quiet new subdivision**

3820 6th Ave. W, Williston - Behind Walmart  
701-570-9390 • 701-774-5310 | [www.HomesJJI.com](http://www.HomesJJI.com)



## Join Us Monday

## Nights for Football at the Waterhole #3



**\$8 Pitchers of Beer**

**Free Slush Burgers!**

**Bring your own mug & receive 1<sup>st</sup> tap beer filled free!**

406-742-5224

**Water Hole #3**

Fairview, Montana

## ENJOY THE FALL HUNTING SEASONS!

**Archery.....Now Open!**

**Mountain Grouse...Now Open!**

**Big Game**

**Antelope..... Opens Oct. 11**

**Deer & Elk..... Opens Oct. 25**

**Upland Game Bird**

**Pheasant..... Opens Oct. 11**



**ALL YOUR FAVORITE BRANDS & MORE!**

MISSION Benelli Franchi Remington

**HIGH CALIBER SPORTS**

Mon-Sat: 9am - 6pm  
406-433-1800  
Shops at Fox Run  
440 N Central Ave • Sidney, MT

# The sears Quality You Love... Right Here In Sidney!

sears hometown store will open september 12 at 10am



## Incredible Selection on the Floor!

- Over 50 Washers & Dryers
- Over 25 Refrigerators (Including the Kenmore Grab n’ Go)
- Ranges
- Dishwashers
- Microwaves
- Freezers

**Located Conveniently In:**

*TriFecta Home Center*

**1051 S. Central Ave • Sidney, MT | Mon-Sat: 10am - 6:30pm**  
**406-433-9898 • Fax: 406-433-9896 [TriFectaHomeCenter@live.com](mailto:TriFectaHomeCenter@live.com)**





# Café Villarreal

214 S Ellery Ave • Fairview, MT  
406-742-5307

Sun: Closed  
Mon-Thur: 5am - 9pm  
Fri & Sat: 5am - 5pm • 10pm - 4am  
Serving Mexican & American Food

# Deming 2 Time Lamb Champ

**By Meagan Dotson**  
At 12 years old, Becca Deming shows a work ethic and sense of responsibility beyond her years. At this year's Richland County Fair she won Grand Champion Market Lamb for the second year in a row along with Grand Champion Breeder Lamb, Grand Champion Junior Lamb Showman and Grand Champion Junior Over-all Showman. This year Deming was up against approximately 17 other market lambs and plans on attending the Northern International Livestock Expo (NILE) held in Billings MT in October which is a much larger competition.

Deming explains that judges look specifically at the loin, butt, and hind saddle areas on a market lamb. If these areas are too small it

means the lamb is not ready for market, however if these areas are too big the lamb is over-finished. She speaks with knowledge and certainty as she explains what she's learned over the past four years in the Richland Rascals 4H Club.

"I give all my credit to Caitlin Klaboe and Kevin Frasier, a family friend and Ag teacher in Oklahoma," Deming says.

Klaboe Livestock out of Miles City, MT is where the Demings have gotten all of their lambs.

"The knowledge she (Caitlin Klaboe) gives to the children is worth more than the lambs are," says Kelly Deming, Becca Deming's mom.

Becca Deming explains that the work that goes into raising a lamb begins long before the animal is ever brought home. Having the proper space and equipment is just the beginning. A lamb stand is needed to get the lambs ready for the show which is called "fitting". In late March or early April the family makes the trip to Miles City where a lamb is picked out and brought home. Once home the lamb is given a few days to settle in. Feedings are morning and night and must be monitored to safeguard against choking

and it is a rule in the Deming household that animals are fed before people as people have access to the fridge and the pantry and the animals don't.

Humanizing the lambs is time spent talking to them, rubbing them and just letting them get used to people. They must be walked on a halter and as they get older and stronger they are run behind a 4 wheeler at a jogging pace to build their leg muscles. Both training them to walk on a halter and humanizing them are essential to showing them in competitions.

"My favorite part is getting to show the lambs. Getting a lamb is like getting a puppy and selling them is like losing your dog," admits Becca Deming.

However she understands that it is all part of the process and this year James, one of her two lambs, has been bought by Border Steel, who agreed to let her keep James until after NILE in October. Both animals will be entered, James as a heavy weight market lamb.

The Demings opened up their property to in-town families that wouldn't be able to participate in 4H otherwise. They keep the animals of three to four other families and get to witness the dedication of the

kids who faithfully show up to care for and work with their 4H animals.

"The kids are self-sufficient when it comes to the animals and it's been a great opportunity. They have learned responsibility with adult supervision," notes Kelly Deming.

Becca Deming also showed hogs, beef, her dog Roxie, and has shown horses in the past. She may get the chance to show her beef nationally and is one of only three kids in Richland County who led their own steers to weigh-ins, a testament to her commitment. In 2013 she won Grand Champion Market Lamb, Reserve Feeder Lamb and Grand Peewee Showman. The Demings would like to especially thank Restorx for purchasing her 2013 lamb shown at the NILE competition in 2013; their support for her expanding as a showman has been greatly appreciated. While she admits it takes time and things don't always go your way, she adds that it's been a lot of fun because she has friends around working just as hard and having just as much fun. Friendships have been a big part of her 4H experience this year and she is looking forward to another year of raising and showing animals.

## HIGH PLAINS AUCTION & APPRAISAL CONDUCTING THE

# ~ ROY BERQUIST & CONSIGNORS ~

# AUCTION

## SUNDAY, SEPTEMBER 21, 2014 • 12:15 PM

3752 HWY 1806 West, Watford City, ND 58854. From Watford City, east to Hwy 1806, then North 10 miles; watch for signs. For information call Roy - 701-842-3029.

**AUCTIONEER'S NOTE:** Firearms will sell at 3:00 pm; vehicles and tractors will sell just prior to firearms.

### VEHICLES • TRAILER • TRACTORS

- 1999 Chevrolet half ton pickup, new tires & brakes, 161,300 mi.
- 1971 Chevrolet Monte Carlo, 350 engine, 54,600 miles
- 1947 International KB 6, runs good, good hoist, box needs attention
- Truck box wagon with good hoist
- 1970 Oliver 1555 w/ F-11 Farmhand loader- grapple, sweep rake, dirt bucket; new rear tires & chains
- Ford 9N w/ Sherman transmission, new rear tires & implements to be sold separately - cultivator, disk, 2 plows & grass seeder
- 2 Go Carts

### FIREARMS

- Remington Model 14, 35 caliber w/open & peep sights, SN 102143
- Remington Model 141, 35 caliber w/open sights, SN 73381
- Remington 30 caliber, open sights, SN C-1483
- Remington Model 760 Game Master, 30/06 caliber, SN 319171
- Remington Model 700 BDL, 338 caliber, never been shot, 1969 RMEF, #16 of 100
- Winchester Model 70, Featherweight, 257 Roberts, never been shot, SN 35CZY10422
- Winchester Model 94, 32 caliber, SN 1509844
- Winchester Model 94, 30/30 caliber, SN 5075153
- Remington Model 12-22, SN 749142
- Remington 22 caliber, SN 732
- Mossberg 20 gauge, 2 3/4" or 3", SN P-434262
- Colt Dakota Territory 1861-1869 in case, never been fired or cocked, SN 486DT
- Liberty gun safe, 24 guns with shelving, Model CA29, SN 1320580

### EQUIPMENT • SHOP • YARD

- Husvama riding mower w/bagger, 48" deck
- 7500 diesel generator w/ welder (NEW)
- Gas operated, 8 hour power generator
- Versatile grain auger, 45', PTO drive
- Honda mud pump, 3 inch
- Steel posts, 110 count, used
- Assorted old hand tools
- 20' Tow rope
- Iron rack
- TV
- Set of work horse harness, 22" collars and set of fly nets
- Several antique hand tools and old implement seats
- Corner style, two piece oak computer desk

### GUEST CONSIGNOR DOUG JOHNSRUD 701-770-4614

- Winchester Model 70, 223 WSSM, stainless bull barrel, SN G72524159
- Winchester Model 70, 223 WSSM, SN G2534893
- Winchester Model 70, 270 WSM, bull barrel, SN G3019382
- Ruger 270 WSM, SN 791-30865
- Marlin 243, Camo w/ Barasco Scope, SN 91920724
- Marlin 270, Walnut, SN 91795631
- Marlin 243, black synthetic w/ 3x9 scope, SN 91907181
- Oak gun cabinet
- Kawasaki 4 wheeler, low miles
- Ariens roto-tiller (nice)
- (3) Wayne sump pumps (used); (3) Wayne sump pumps (new)
- 153 New pointed wood posts, 3 1/2"-5" x 6"
- 50 Treated corner posts, 7'
- Electric & solar fence chargers
- Two and a half rolls of poly electric fence wire (new)
- Used electric fence wire on rollers; new & used post clips for electric fence
- Heavy duty airless paint sprayer (new)
- Splicing tool and splicers for barbed wire fence (new)
- 3 Battery chargers, air compressor
- John Deere pressure washer
- Head gate, self catch, like new
- Shop made calf warmer
- Electric chicken plucker
- 4" Submersible well pump (works well)
- Welding table w/ vise
- Shaver hydraulic post pounder
- John Deere, 3 point posthole digger
- Pump jack w/ new arms
- Picnic table
- Assortment of old carpenter tools & old hand tools

### GUEST CONSIGNOR LEE STEVENS

- 12 Volt winch
- John Deere #80 2 wheel trailer w/ dump box
- Propane tank, 100 LBS, full
- Rigid radial arm saw

### HIGH PLAINS AUCTION

Williston Bottineau

**We Sell - We Clerk - We Advertise**  
WILLISTON, NORTH DAKOTA

Lee Halvorson #549  
Williston, ND (701) 774-2923  
auctioneer@highplainsauction.com  
www.highplainsauction.com

Orville Mjelstad Sales Manager  
Arnegard, ND (701) 586-3731

Jim Borseth #668  
Williston, ND (701) 572-5480

High Plains Clerking #398  
Auction Cell: 570-3073

**LUNCH WILL BE SERVED**

TERMS: Cash or Check. Identification Required. All Sales Final. Everything sold "As is, Where is." Not Responsible for Accidents.

# CUSTOM HOMES ON YOUR LAND

## MODULAR HOMES FROM EXCAVATION TO COMPLETION

Licensed General Contractor Rus Inc. – We travel to ND, MT, SD & WY

**OPEN HOUSE**  
SEPT. 13 & 14



**OPEN HOUSE**  
SEPT. 13 & 14



### SPECIAL PRICE

## \$183,900

1,387 Sq. Ft. – 3 Bedroom, 2 Bath

- Includes Unit
- Includes Concrete Basement
- Includes Excavation, Digout & Back Fill
- Includes Set & Finish
- Includes Delivery
- Includes Basement Stairs
- Includes Kitchen Appliances Per Plan
- Includes Inside Plumbing

### Excavation to Completion Home Plans

### – SAVE –

Let us do all the work from Excavation to Completion. We will bid your favorite plan with no cost to you!

#### MODEL HOME OPEN HOUSE

SAT, SEPT 13TH & SUN, SEPT 14TH  
12:00 PM - 4:00 PM



### SPECIAL PRICE

## \$193,900

1,856 Sq. Ft. – 4 Bedroom, 2 Bath

- Includes Unit
- Includes Concrete Basement
- Includes Excavation, Digout & Back Fill
- Includes Set & Finish
- Includes Delivery
- Includes Basement Stairs
- Includes Kitchen Appliances Per Plan
- Includes Outside Electrical Disconnect

### Excavation to Completion Home Plans

## 701-572-9354 | LHEATH.AK@GMAIL.COM



# The Roundup Classifieds

Reach Over 21,000 Readers Each Week In Eastern Montana & Western North Dakota And Always On The Internet at [roundupweb.com](http://roundupweb.com)  
(Paypal required for online purchases)

Add a photo  
to your classy online!  
(additional charge)

Now Taking  
Credit Cards!  
(5% charge added  
to all transactions)

Get Up To 30 Words For Just \$9 • Deadline: Monday

## HELP WANTED ADMINISTRATIVE ASSISTANT

The Roundup is looking for a full time Administrative Assistant to work Monday 8-5, Tuesday - Friday 9-5. Basic computer skills a plus. Will be answering multi-line phone, waiting on customers, and entering classified ads. Benefits include; paid holidays, health care, one week paid vacation after one year. Apply at the Sidney Job Service. \$500 signing bonus after completing a three month trial period.

**CARRIERS WANTED**  
Need extra cash or want to get some exercise while getting paid? We have carrier routes available in most parts of Sidney. Call 406-433-3306, or fill out application at The Roundup, 111 W. Main, Sidney.

**WANTED SERVERS & KITCHEN STAFF**  
Wage DOE. Apply in person at Cattle-Ac, 119 N. Central Ave., Sidney, MT.

**HELP WANTED**  
The City of Arnegard, located in McKenzie County in Western North Dakota, in the heart of the Williston Basin and the ongoing Bakken shale play, seeks a Public Works Maintenance Worker. The Public Works Maintenance Worker performs general maintenance, construction work, and Operates equipment in the upkeep of the City wastewater collection system and streets. The Maintenance Worker is a

first line in delivery of Sewer and Street services to the public and as such must foster good community relations. Minimum Qualifications: High school diploma or GED equivalent. Six months to one year of experience in a related field. Necessary Knowledge, Skills and Abilities: Skill to operate certain tools and equipment. Knowledge of wastewater collection systems, general knowledge of street and grounds maintenance. Special Requirements: Must have a valid North Dakota driver's license, with the ability to obtain a CDL license with endorsements. This is a full-time position, (40) hours per week, with a competitive benefits package. Starting wage is DOQ. Contact Mayor Jeffrey Kindel, Arnegard City Hall at 701-586-3453 to request a City job application package. Complete City job application, along with optional cover letter and resume, should be mailed to the Public Works Search, City of Arnegard, Post Office Box 488, Arnegard, ND 58835.

**POSITION AVAILABLE**  
Local oilfield construction company is looking for an experienced construction manager in Western North Dakota. For further inquiry please call our office at 701-675-2630. Qualified applicants please send resume with references to [ashley@geconstructionllc.com](mailto:ashley@geconstructionllc.com).

**HELP WANTED**  
Full time position for a Loan Clerk/Loan Officer with loan documentation experience to work in our Watford City/ New Town offices. Duties include preparing loan documents, lien perfection, loan file organization, insurance tracking, taking loan applications, performing loan closings, etc. Must possess excellent verbal and written communication skills, be able to handle a variety of situations and work in a professional office environment. Salary is commensurate on experience and we offer a competitive benefit package for full time employees. Send application or resume to Dakota West Credit Union, Attn: Sue Keller, PO Box 1496, Watford City, ND 58854, email: [susand@dakotawestcu.org](mailto:susand@dakotawestcu.org) or call 1-800-411-7590.

**HELP WANTED**  
Full time position for a Paralegal with loan documentation experience or a Loan Processor with experience in documenting and processing loans to work in our Watford City office. Duties include preparing loan documents, lien perfection, loan file organization, and insurance tracking. Must possess excellent verbal and written communication skills, be able to handle a variety of situations and work in a professional office environment. Salary is commensurate on experience and we offer a competitive benefit package for full time employees. Send

application or resume to Dakota West Credit Union, Attn: Sue Keller, PO Box 1496, Watford City, ND 58854, email: [susand@dakotawestcu.org](mailto:susand@dakotawestcu.org) or call 1-800-411-7590. EOE.

**REAL ESTATE  
FOR SALE OR LEASE**  
Heated, airconditioned, finished 70'x100' building. 80'x200' cold storage building on approximately 4 acres. 406-489-1880.

**5 ACRE COMMERCIAL LOTS FOR SALE**  
Conveniently located between Williston & Watford City, right off Hwy 85. Graded recently. Perfect for a new shop, or business! Lots have rural water, power, RTC, & electric right at the road. Hwy 85, S. on 140th Ave NW, 1/4 mile on right. 406-471-4049.

**FOR SALE**  
In Sidney, MT: New 1680 sq. ft, 3 bedroom, 1 3/4 bath home under construction on 8614 sq.ft lot on private street. Features include: Energy efficient construction, 9 ft. walls, central air, master suite, large kitchen with island, utility/laundry room, backyard deck, landscaped front yard, attached 2 car garage. Budget allowance for buyer's choice of appliances, flooring, cabinetry. \$325,000. Call 406-488-4495 for appointment.

**HOUSE FOR SALE**  
3 bedroom, 1 3/4 bath. Dutch colonial with detached car garage. 12x12 storage shed and underground sprinklers. 316 8th St SE. Sidney. 406-480-2459.

**FOR RENT  
CAMPER SPOTS**  
Camper spots available in Savage, MT. Water, sewer, electricity. \$575/month. No pets. 406-776-2209 or 406-480-1626 leave message.

**RETAIL SPACE FOR RENT**  
Located in downtown Sidney, carpeted throughout, security cameras, cell phone booster, wireless internet, in-house restaurant, \$750/mo. Call Linda 406-489-1945 or Melissa 360-708-8170.

**SERVICES  
PAINTING**  
Will paint houses, barns, quonsets, silos, grain bins, etc. References available. R&L Painting, 406-488-8244.

## Administrative Assistant Wanted \$400 Signing Bonus\*

The Roundup is looking for a full-time Administrative Assistant to work Monday: 8am - 5pm, Tuesday - Friday: 9am - 5pm. Basic computer skills a plus. Will be answering multi-line phone, waiting on customers, some book keeping & entering classified ads. Benefits include: paid holidays, optional health care & one week paid vacation after one year. Apply at the Sidney Job Service.  
*\*After completing a three month trial period. Compensation based on experience.*

## HELP WANTED

Now hiring Class A CDL/Equipment Operator. 100% Employee owned. Competitive wages & benefits.  
35023 County Road 123-Powerplant Rd. Sidney, MT - 800-548-6364 • 406-433-1301 Fax: 406-433-1308  
[dale-gambrel@pacific-steel.com](mailto:dale-gambrel@pacific-steel.com)

**Direct Support Positions Available**

**Full-time:** Group home positions available for evenings & weekend hours. Starting wage is \$11.75 with paid **Health Insurance, PTO & Retirement Savings**. Overnight starting wage is \$12.75

**Part-time:** Group home positions available for evenings & weekends with a variety of hours. Starting wage is \$11.75 with **Retirement Savings**. Overnight starting wage is \$12.25

*If interested or want more information, please contact Tami at 1100 Silurian Lane, Sidney, MT | 488-3341 ext. #2*

**Hefty SEED COMPANY**

**Agronomist Position Available Immediately**

Hefty Seed Company has as agronomy position open now at the Sidney location. Work for an outstanding company and a leader in the field!

**For more information, call Hefty Seed Company, Sidney at : 406-488-4338 (HEFT)**

**CANDLEWOOD SUITES**

**Now Hiring All Positions & Enthusiastic Personalities!**

Starting at \$13 per hour/Wage DOE  
Great Team Members & Fun Atmosphere  
Stop in & fill out an application at Candlewood Suites.

201 6th St NW Sidney, MT 59270  
Office: 406-482-9692 • Fax: 406-433-8802  
Email: [sidneycwsales@pacificinns.com](mailto:sidneycwsales@pacificinns.com)

**SIDNEY HEALTH CENTER**  
Exceptional Care for Life

**EMPLOYMENT OPPORTUNITIES**

Sidney Health Center's most valuable resource is the people who serve our patients, residents and guests. Join our team!

- **Certified Nurses Assistants**
- **Clinic Pharmacy Cashier**  
DME Sales
- **Engineering Maintenance Worker**
- **Environmental Services**
- **Food Services**  
Cook  
Supervisor  
Utility Worker
- **Laboratory**  
Medical Technologist/Medical Lab Technician  
Phlebotomist

**We promote a Work-Life Balance**

**TOP 100** 9 out of 10 Employees Agree: "I don't have to choose between my job and family!"

For additional information or to apply online, please visit our website or contact: Marilyn Olson • Phone: (406) 488-2571  
[mjolson@sidneyhealth.org](mailto:mjolson@sidneyhealth.org) • 216 14th Ave SW • Sidney, MT

Visit Our Website at: [www.sidneyhealth.org](http://www.sidneyhealth.org)

## HELP WANTED

Energize your career & build your future! Join the Montana-Dakota Utilities team!  
**Position: Service Technician – Electric/Natural Gas**  
**Location: Sidney, MT**

**Major Responsibilities:**

- Performs all duties required to operate & maintain electric & gas distribution systems
- Responds to emergencies, scheduled & unscheduled overtime, after hour calls & customer complaints
- Subject to on-call rotation & extended service hours

**Minimum Qualifications:**

- High school education with vocational training or lineworker certification, or equivalent work experience
- Strong mechanical aptitude, troubleshooting skills, knowledge of electrical schematics & the ability to work independently
- Possess or be able to acquire a valid commercial motor vehicle driver's license

Montana-Dakota Utilities Co. is an Equal Opportunity Affirmative Action Employer. All qualified applicants will receive consideration for employment without regard to race, color, religion, sex, national origin, disability, or protected Veteran status.

Montana-Dakota Utilities Co • A Division of MDU Resources Group, Inc

**MP** Must be legally authorized to work in the United States, no sponsorships considered. Subject to pre-employment drug testing & background checks.  
Apply online & check our other vacancies currently open with the MDU Resources Group, Inc. on our website: [jobs.mdu.com](http://jobs.mdu.com)

## The Roundup Classifieds

Reaching over 10,659 Households in Western North Dakota and Eastern Montana Every Week

(Please Print)

1	2	3	4	5	6
7	8	9	10	11	12
13	14	15	16	17	18
19	20	21	22	23	24
25	26	27	28	29	30
31	\$9.10	32	\$9.20	33	\$9.30
34	\$9.40	35	\$9.50	36	\$9.60 (etc.)

**\$9.00 for 30 words or less; 10¢ per additional word**  
**Payment Must Accompany Ad**

Number of words \_\_\_\_\_ x Number of Times \_\_\_\_\_ = Cost \$ \_\_\_\_\_

**Mail To:**  
The Roundup  
PO Box 1207, Sidney, MT 59270

Name \_\_\_\_\_



**WELDING**  
Welding & repair work. No job is too small. Portable welder, reasonable rates. 701-444-2936.

**FARM & RANCH**  
**FOR SALE**  
Decade Winter Wheat seed. Registered and Certificate available. Phone: 701-842-3907.

**AIRCRAFT FOR SALE:**  
**1981 Hughes 269C TTAf 3132:** TSMOH 845, 3 new M/R blades, Component times on request, big fuel and much more. ~~\$157,000~~ **\$147,000**  
**Call Barry at Sidney Air Service: 406-480-2024**

HEADQUARTERS FOR STOCKMEN  
*Williston Saddlery*  
14095 West Front Street - Williston, ND 58801  
4 1/4 Miles West on Hwy. 2

 • Trailers  
• Saddles & Tack  
• Complete Feed Line  
• Livestock Equipment  
• Animal Health Products

*"If ya wants it - we gets it.  
If we ain't gets it - we can gets it.  
If we can't gets it - ya don't really wants it!"*

*We are like a good Horse -  
We aim to please*

**TELEPHONE**  
(701) 572-2267

**A RAM 1500 EXCLUSIVE!**

**MOTOR TREND TRUCK OF THE YEAR**  
★ RAM 1500 ★  
2013 2014  
★ FIRST EVER BACK-TO-BACK CHAMPION ★

 #4624

**2014 RAM 1500 CREW CAB**  
SLT pkg, 8-speed automatic, air conditioning, tilt, cruise, power windows, power seats, power locks, remote start, anti-spin differential, 4 wheel drive, 3.0 - V6 Eco Diesel Engine.

**MSRP..... \$48,075**  
**Action Auto Discount..... -\$2,596**  
**Chrysler Rebate..... -\$2,500**  
**You Pay.... **\$42,979**\***

\*Includes 5 year/100,000 miles powertrain warranty. Doesn't include doc fees & sales tax. Must qualify for all rebates.

  
**ACTION AUTO**  
433-2312 • 1-800-788-2312  
www.actionautochryslerdodgejeep.com  
220 East Main, Sidney, MT

 Gary McPherson  
Hm: 488-7799

 Gary Schoepp  
Cell: 489-2912

 Jon Nelson  
Cell: 208-669-9285

**THE BUSINESS ROUNDUP**  
REACH 26,500 READERS IN THE ENTIRE MONDAK REGION  
**406-433-3306 OR 800-749-3306 ~ INFO@ROUNDUPWEB.COM**

GO TO WWW.ROUNDUPWEB/DIRECTORY FOR DIRECT LINKS TO COMPANY WEBSITES & LOCATIONS **\$25<sup>00</sup>/WK**

 **SONDA'S solutions**  
Specializing in FR Clothing  
OFFICE: 406-433-6757 • CELL: 406-697-7153  
2221 S. CENTRAL AVENUE • SIDNEY, MT 59270  
FAX: 406-433-6755 • WEBSITE: WWW.SONDASOLUTIONS.COM

Coverage for all the things you care for.

**TIFFANY STEFFAN**  
323 E Main Street,  
SIDNEY, MT 59270  
TSTEFFAN@FARMERSAGENT.COM

 **FARMERS INSURANCE**

Call 406-433-1377 today for Auto, Home, Life and Business.

**SIDNEY WOODWORKER & LUMBER**  
1450 5th St SW • Sidney, MT  
406-433-7767 • Fax: 406-433-7768 | M-F: 8 - 5:30pm • Sat: 8 - 3pm

**YOUR COMPANY HERE**

**MINERALS & SUPPLEMENTS**  
Complete line of minerals & supplements, Crystalx protein & mineral tubs for cattle, horses & sheep. All types of liquid feed for livestock. Calving supplies. R&J Ag Supply 406-488-1953, 406-480-2006, 1-800-233-2499, Sidney, MT.

**FOR SALE**  
John Deere 8820 Titan II Combine. Excellent condition. Also JD 535 Round Baler with bale kicker. Excellent condition. Call 701-694-3620.

**FOR SALE**  
966 Int. Diesel Tractor, cab, 3 point, 4 hydraulics. Runs good. Call for more info. 406-773-5549.

**VERMEER HAYING EQUIPMENT**  
See us today for all your haying & feeding equipment, sweeps & farm oil. Anderson

Vermeer Sales & Service.  
Open Mon.-Fri., 8 a.m.-5:30 p.m. 701-828-3358 or 701-828-3482 (after hrs.). Alexander, ND.

**MISCELLANEOUS AIRCRAFT**  
Buying or selling. Call Barry at Sidney Air Service Inc. 406-480-2024.

**FOR SALE**  
Oak kitchen cabinets plus appliances. 406-774-3462.

**THRIVE**  
Thrive!!! Energy, Weight loss, Mental Clarity, Digestive support and much more! 701-570-3835 or email aekblad\_1@hotmail.com.

**The Roundup Auto Trader**  
**Only \$17 A Week!**  
If you run it for 2 weeks & it doesn't sell, we'll run it for 2 more weeks..... **FREE!**

**2008 Jeep Liberty Limited**  
Well maintained, in good condition, clean interior, no smoking or pet damage. 167,000 miles.  
Call 406-480-2343

 **\$7,000 or best offer**

**2011 Amity Beet Harvester**  
6 row, 24" spacing, excellent shape, stored inside since new.  
Call 406-489-6499 for more information and pricing details.



**2007 Sterling Actera**  
330 MB, 10 speed, low mileage, new 22 foot box & hoist, unit in excellent condition.  
Call 701-693-2833

 **\$49,500**

**Want to place an ad in the Auto trader?**  
classads@esidney.com • (406) 433-3306 for details

**MAJOR RARE COIN AUCTION & SEMINAR**  
3 p.m. Sunday, Sept. 14, 2014. 2051 W. Burdick Expy. Minot, ND. High grade & UDMPL Morgan's CC \$'s, 19th century proof coins, high grade slabbed coins, fractional gold and silver trade tokens, major mint errors, modern proof coins, bullion. Raw coins & door prizes!! Items for all budgets. Once in a lifetime opportunity! For more info, email lang@alliancecom.net or call 605-772-5264. To see the full lot list and to remote bid, go to http://www.tsfooster-sales.com/auktion. See us the Minot Coin Club & Collectable Show. Sept. 13, 9 a.m. - 5 p.m. & 14, 9 a.m. - 2:30 p.m.

Sleep Inn & Suites 2400 10th St. SW, Dakota Square, Minot, ND. Youth under age 17 get a free collectable coin! Live bidders must have state/military picture I.D. We accept major credit/debit cards & cash or personal checks with conditions.

**FOR SALE**  
Pair of micro-fiber swivel rockers with foot stools. Tan, like new, \$200 for the pair. 16 in. boys spider man bike with training wheels. \$30. 406-478-3605.

**GUN SHOW**  
**GLENDIVE GUN SHOW**  
E.P.E.C. Bldg. 313 S. Merrill. Sept. 19 - 21. Show hours are from Friday, 4 p.m. to 9 p.m., Saturday 9 a.m. - 6 p.m., and Sunday 9 a.m. - 3 p.m. Questions or reservations, call Ernie at 406-377-3969.

**VEHICLES**  
**FOR SALE**  
1988 International 8300 Triple axel truck with 20 ft grain box and cummins engine. Excellent condition. 701-694-3620.

**FOR SALE**  
1984 Corvette. Burnt orange - sharp! Very good condition. \$23,000 in restoration including new paint, new interior, new stabilizer bars, tires. Will sacrifice for \$14,000. 406-489-1880.

**MISC.**  
**WANTED**  
Looking for class Ct. motorhome, around 30' in good condition. Preferably DuraMax. 406-489-1097.

**RUMAGE SALE**  
**THE BIG ONE**  
Rummage sale "The Big One" is coming to Watford City, First Lutheran Women's sale is Thursday, Sept. 18th, 3 - 8pm Fri., Sept. 19th, 9am - 3pm. Sloppy joes and homemade pies. \$1.00 bag sale 1-3pm at Civic Center & Veterans Building.

 **Mini-Storage**

 **STORAGE UNITS AVAILABLE**

20X20 • 10X20  
10X16 • 8X9

Sidney, MT  
482-3799 or 482-2666

**TRADING POST**  
111 E. MAIN STREET • SIDNEY, MT. 59270  
CONSIGNMENT • ANTIQUES  
GUNS • TOOLS • PAWN  
1-406-433-7676  
ASK FOR JERRY OR JOANNA

**Customer Service is Our #1 Priority**

 **BORDER STEEL AND RECYCLING, INC.**

Brady Smelser • Tim Mulholland • Kelly Moody • Bret Smelser • Ernie Gawryluk

Sidney      Glendive      Williston      Plentywood  
35002 CR 123      2703 W. Towne St.      13896 W. Front St.      Hwy 16 East  
406-433-7737      1-800-423-5219      1-800-820-5493      406-765-2624  
1-855-810-2995

 **Beagle PROPERTIES INC.**  
View all our listings at [www.beagleproperties.com](http://www.beagleproperties.com)

 **DOORBUSTN**  
Portables & Septic Service, LLC  
Blaine Rogers, Owner

PO Box 1003      Office: (406) 433-7586  
Sidney, MT 59270      Fax: (406) 433-7596  
Service: (406) 489-0915

[www.doorbustnportablessepticsevice.com](http://www.doorbustnportablessepticsevice.com)

**NICK JONES REAL ESTATE** REALTOR®

TRUCK ROUTE SOUTH, SIDNEY  
OR CONTACT ONE OF OUR AGENTS:

JUSTIN JONES      DENNIS WICK      JERRIN FRASER      KRISTIN LARSON  
406-480-9525      406-480-1550      406-478-3773      406-480-5139  
Home: 798-3115

[WWW.NICKJONESRE.COM](http://WWW.NICKJONESRE.COM)

 **AGRI INDUSTRIES**  
Valley V PERFORMANCE PLUS DEALER  
1-877-488-8066  
Office: 406-488-8066  
Fax: 406-488-8067  
1775 S. Central Ave.  
Sidney, MT 59270  
[www.agriindustries.com](http://www.agriindustries.com)

**Ken Tyler**  
Utility Foreman  
email: [ktyler.agri@gmail.com](mailto:ktyler.agri@gmail.com)

 **SLS SERVICES, INC.**  
Oil Field & Industrial Construction

2265 S. Central Ave.  
Sidney, MT 59270  
Email: [les@slservices.net](mailto:les@slservices.net)  
Phone: 406.433.6754  
Fax: 406.433.6755

[www.slsserviceinc.com](http://www.slsserviceinc.com)

**HOSE ASSEMBLIES WHILE YOU WAIT**

 **MFCP MOTION & FLOW**  
CONTROL PRODUCTS, INC.

Fluid Connectors - Industrial Hose - Seals  
Hydraulics - Pneumatics - Automation  
Filtration - Racor - Instrumentation

 **Parker Store**

406.433.1590  
AM/FM HOURS 406.478.3118  
Fax: 406.433.1599

SIDNEY, MT  
205 10th Avenue SE  
[WWW.MFCPINC.COM](http://WWW.MFCPINC.COM)

 **SAFETY**



# Livestock Producers Urged to Enroll in Disaster Assistance Program by Oct. 1

Congressionally Mandated Payment Reductions to Take Effect at Beginning of New Fiscal Year. Ranchers Applying for LFP Support Who Have Scheduled Appointments by Sept. 30th Will not be Impacted



Yellowstone Chiropractic Clinic  
 (406)-433-4757 222 2nd. Ave. SW  
 1-866-433-4757 Sidney, MT 59270  
**Dr. Ryan Laqua**  
 Chiropractic Physician &  
 Certified Medical Examiner



• Sports Injuries • DOT Physicals  
 • Personal Injuries & Pain Conditions

Submitted by SDA Office of Communications

The U.S. Department of Agriculture (USDA) is encouraging producers who have suffered eligible disaster-related losses to act to secure assistance by Sept. 30, 2014, as congressionally mandated payment reductions will take place for producers who have not acted before that date. Livestock producers that have experienced grazing losses since October 2011 and may be eligible for benefits but have not yet contacted their local Farm Service Agency (FSA) office should do so as soon as possible.

The Budget Control Act passed by Congress in 2011 requires USDA to implement reductions of 7.3 percent to the Livestock Forage Disaster Program (LFP) in the new fiscal year, which begins Oct. 1, 2014. However, producers seeking LFP support who have scheduled appointments with their local FSA office before Oct. 1, even if the appointment occurs after Oct.1, will not see reductions in the amount of disaster relief they receive.

USDA is encouraging producers to register, request an appointment or begin a Livestock Forage Disaster Program application with their county FSA office before Oct. 1, 2014, to lock in the current zero percent sequestration rate. As an additional aid to qualified producers applying for LFP, the Farm Service's Agency has developed an online registration that enables farmers and ranchers to put their names on an electronic list before the deadline to avoid reductions in their disaster assistance. This is an alternative to visiting or contacting the county office. To place a name on the Livestock Forage Disaster Program list online, visit <http://www.fsa.usda.gov/disaster-register>This is an external link or third-party site outside of the United States Department of Agriculture (USDA) website.

Producers who already contacted the county office and have an appointment scheduled need do nothing more.

"In just four months since disaster assistance enrollments began, we've processed 240,000 applications to help farmers and ranchers who suffered losses," said Agriculture Secretary Tom Vilsack. "Eligible producers who have not yet contacted their local FSA office should stop by or call their local FSA office, or sign up online before Oct. 1 when congressionally mandated payment reductions take effect. This will ensure they receive as much financial assistance as possible."

The Livestock Indemnity Program, the Tree Assistance Program and the Noninsured Disaster Assistance Program Frost Freeze payments will also be cut by 7.3 percent on Oct. 1, 2014. Unlike the Livestock Forage Disaster Program, applications for these programs must be fully completed by Sept. 30. FSA offices will prioritize these applications, but as the full application process can take several days or more to complete, producers are encouraged to begin the application process as soon as possible.

The Livestock Forage Disaster Program compensates eligible livestock producers who suffered grazing losses due to drought or fire between Oct. 1, 2011 and Dec. 31, 2014. Eligible livestock includes alpacas, beef cattle, buffalo, beefalo, dairy cattle, deer, elk, emus, equine, goats, llamas, poultry, reindeer, sheep or swine that have been or would have been grazing the eligible grazing land or pastureland. Producers forced to liquidate their livestock may also be eligible for program benefits.

Additionally, the 2014 Farm Bill eliminated the risk management purchase requirement. Livestock producers are no longer required to purchase coverage under the federal crop insurance program or Noninsured Crop Disaster Assistance Program to be eligible for Livestock Forage Disaster Program assistance.

To learn more about USDA disaster relief program, producers can review the 2014 Farm Bill fact sheet at [www.fsa.usda.gov/farmbill](http://www.fsa.usda.gov/farmbill), the LFP program fact sheet, <http://go.usa.gov/5JTk>, or contact their local FSA office.

The Livestock Forage Disaster Program was made possible through the 2014 Farm Bill, which builds on historic economic gains in rural America over the past five years, while achieving meaningful reform and billions of dollars in savings for the taxpayer. Since enactment, USDA has made significant progress to implement each provision of this critical legislation, including providing disaster relief to farmers and ranchers; strengthening risk management tools; expanding access to rural credit; funding critical research; establishing innovative public-private conservation partnerships; developing new markets for rural-made products; and investing in infrastructure, housing and community facilities to help improve quality of life in rural America. For more information, visit [www.usda.gov/farmbill](http://www.usda.gov/farmbill).

USDA is an equal opportunity provider and employer. To file a complaint of discrimination, write: USDA, Office of the Assistant Secretary for Civil Rights, Office of Adjudication, 1400 Independence Ave., SW, Washington, DC 20250-9410 or call (866) 632-9992 (Toll-free Customer Service), (800) 877-8339 (Local or Federal relay), (866) 377-8642 (Relay voice users).

MNAXLP



Everything Roundup on the web.

# REMODEL SALE

Come check out our new look!

## Sept. 15<sup>th</sup> – 20<sup>th</sup>

FR Pants & Shirts .....

15% off

Redwing, Ariat & Muck Steel-Toed Boots ....

10% off

Wolverine Steel Toed Boots .....

35% off

*In Stock Items Only*





[www.sondassolutions.com](http://www.sondassolutions.com)  
 M-F: 6am - 6pm • Sat: 8am - 5pm | 2221 S. Central, Sidney | 406-433-6757

# We have LAND and HOMES



Model Homes available for immediate occupancy.



Rental Lots for singles and doubles now available.

Contact Us Today!

701-364-7120

Bakken-Homes.com





Williston , ND  
 Bismarck , ND

Dickinson, ND  
 Glendive, MT



## Lunch Menus

### Sidney School

**Thur., Sept. 11:** Chicken fried steak, potatoes & gravy, corn, pears and dinner roll.

**Fri., Sept. 12:** Deli sandwich, sun chips, raw veggies, peaches and a krispie treat.

**Mon., Sept. 15:** Pork roast, potatoes & gravy, vegetable, green beans and dinner roll.

**Tues., Sept. 16:** Super nachos, tator tots and fruit fluff.

**Wed., Sept. 17:** Sloppy joes, vegetable medley, baked beans and applesauce.

### Fairview School

**Thurs., Sept. 11:** Super salad bar & cookies.

**Fri., Sept. 12:** NO SCHOOL

**Mon., Sept. 15:** Tator tot hot dish, broccoli, pears & bun.

**Tues., Sept. 16:** French dip, chips, tossed salad and peaches.

**Wed., Sept. 17:** Fried chicken legs, mashed potatoes & gravy, cream corn, apple & buns.

### East Fairview School

**Thur., Sept. 11:** Chicken nuggets, baked beans, salad & mandarin oranges.

**Fri., Sept. 12:** NO SCHOOL

**Mon., Sept. 15:** Spring rolls, fried rice, salad & pineapple.

**Tues., Sept. 16:** BBQ pork on a bun, cole slaw, potato wedges & melon.

**Wed., Sept. 17:** Chicken gravy, mashed potatoes, green beans & pears

### Richey School

**Thurs., Sept. 11:** Beef strips, mashed potatoes, country gravy, peas and apple crisp.

**Fri., Sept. 12:** Chili, cheese slices, crackers/pickles, peaches and cinnamon rolls.

**Mon., Sept. 15:** Lasagna, bread stick, salad and apples.

**Tues., Sept. 16:** Tuna noodle western casserole, corn, mandarin oranges and bread.

**Wed., Sept. 17:** Meat pockets, fries, pineapple and a cookie.

### Savage School

**Thur., Sept. 11:** Burrito (bean&cheese), rice, salsa, olives, sour cream and grapes

**Fri., Sept. 12:** Chef salad, bread sticks, fruit salad, veggies and milk.

**Mon., Sept. 15:** Taco hot dish with beans and salsa, salad, applesauce and milk.

**Tues., Sept. 16:** Hamburger gravy with mashed potatoes, green beans/mixed veggies, whole grain bread, pears and milk.

**Wed., Sept. 17:** Hot ham & cheese, fries, baked beans, fruit cocktail and milk.

### Froid School

**Thur., Sept. 11:** Chicken chunks, smiley potatoes, salad bar, fruit, rolls and milk.

**Fri., Sept. 12:** Fishwiches, rice pilaf, salad bar, fruit and milk.

**Mon., Sept. 15:** Chicken alfredo, mixed veggies, salad bar, fruit, buns & milk.

**Tues., Sept. 16:** Sloppy joes, macaroni & potato salad, fruit, salad bar & milk.

**Wed., Sept. 17:** French dip sand. Potato wedges, salad bar, zucchini cake, fruit & milk.

### Rau School

**Thur., Sept. 11:** French dip, fries, veggies and mandarin oranges.

**Fri., Sept. 12:** Hobo stew, fruit and buns.

**Mon., Sept. 15:** BBQ chicken sandwich, cole slaw and apples.

**Tues., Sept. 16:** Mexican Lasagna, green beans and pears.

**Wed., Sept. 17:** Tator tot casserole, peas/carrots, peaches.

### Lambert School

**Thur., Sept. 11:** Beef strips, mashed potatoes, gravy, corn, buns & fruit.

**Fri., Sept. 12:** Slush burgers, green beans, strawberry shortcake.

**Mon., Sept. 15:** Super potato Ole, fresh veggies, fresh fruit.

**Tues., Sept. 16:** Chili, cheese crackers, buns, apples, carrots.

**Wed., Sept. 17:** Baked potato bar, fresh veggies, pudding.

Check us out weekly with...

The Roundup

Monthly with...

Golden Roundup

Or take advantage of all our publications every day at...

Roundup WEB.COM



**Watford City Homes**  
704-913-8338  
1504 4th Ave NE Watford City, ND 58854  
[www.HerDreamHome.com](http://www.HerDreamHome.com)  
Next to McKenzie Building Center

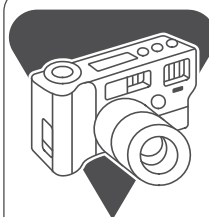
We have land for Singlewides in Watford City!!!!

Don't wait, they will not last long.

Homes Starting at \$29,900

- Singlewide Homes.
- Work Force Housing.
- Modular Homes.
- Financing Specialists.
- Manufactured Homes.
- Land Available.
- Low Down Payments

Roundup WEB.COM



The Roundup

Do you have news or photos from McKenzie County you would like in The Roundup?

CONTACT:

Kathy Taylor in Watford City  
701-842-6188

# We Purchase Vehicles Outright! Ask For Rick! MURPHY MOTORS

## 2011 BUICK ENCLAVE CXL



AWD, 3.6 V6, ATOD, PW, PL, TILT, SC, A/C, P SEATS, HTD SEATS, CD, XM, P MOON ROOF, CHROME WHEELS, GOLDMIST, EBONY LEATHER, U5737B, 87,081 MILES

**\$24,995**

## 2013 DODGE DART SXT



4 CYL, ATOD, A/C TILT, SC, PW, PL, AM/FM/CD, SILVER/EBONY CLOTH, U6461A, 25,976 MILES

**\$16,995**

## 2014 CHEVY SUBURBAN



5.3X8, ATOD, PW, PL, TILT, SC, PSEATS, A/C, WHITE/EBONY, U6459A, 24,423 MILES

**\$43,995**

## 2012 GMC ARCADIA SLT-1



AWD, 3.6 V6, ATOD, PW, PL, TILT, SC, A/C, P SEATS, HTD SEATS, ALL WHEELS, B-UP CAM, CD, XM, CARBON BLK MET, TITANIUM LTHR, U6426B, 35,071 MILES

**\$28,995**

## 2012 DODGE DURANGO CITADER



4 WD, A/C, PW, PL, TILT, SC, P SEATS, P SUNROOF, DVD, AM/FM/CD, CHROME WHEELS, DK CRIMSON MET, EBONY LEATHER, G6310B, 32,200 MILES

**\$34,995**

## 2012 GMC YUKON XL DENALI



6.2 V8, ATOD, PW, PL, TILT, SC, AWD, P SEATS, HTD SEATS, AM/FM/CD/NAV, P SUNROOF, DVD, CHROME WHEELS, WHITE DIAMOND, EBONY LTHR, U5776A, 70,089 MILES

**\$38,995**

## 2013 NISSAN ALTIMA S



4 CYL, ATOD, PW, PL, TILT, A/C, SC, AM/FM/CD, MED GRAY MET/EBONY CLOTH, U6463A, 29,809 MILES

**\$18,695**

## 2013 TOYOTA CAMRY SE



4 CYL, ATOD, PW, PL, TILT, A/C, SC, AM/FM/CD, DARK GRAY MET/EBONY CLOTH, U6464A, 34,388 MILES

**\$19,995**

## 2013 FIAT 500 2 DR COUPE



4 CYC, ATO, A/C, COOL CAR, MED BLUE MET, U6462A, 33,514 MILES

**\$12,995**

## 2004 PONTIAC GTO COUPE



5.7V8, ATOD, PW, PL, TILT, SC, AM/FM/CD, FIRE RED/EBONY G80 LIM SLIP DIFF, HOT CAR, 25,280 MILES, G6058A

**\$14,995**

## 2014 GMC AWD ACADIA SLT-1



3.6 V6, ATOD, PW, PL, P SEATS, TILT, SC, AM/FM/XM/CD, AL WHEELS, GRAY MET/EBONY LTHR, U6362A, 22,030 MILES

**\$37,995**

## 2010 TOYOTA TACOMA DBL CAB



4X4, 4.0 V6, ATOD, PW, PL, TILT, SC, AM/FM/CD, SILVER/GRAY CLOTH, U6357A, 82,763 MILES

**\$21,995**

## 2011 CHEVROLET 1500 EXT CAB LTZ



5.3 V8, ATOD, A/C, PW, PL, TILT, SC, AM/FM/XM/CD, POWER/HTD SEATS, AL WHEELS, SILVER/EBONY LTHR, G6144A, 112,426 MILES

**\$18,995**

## 2012 GMC SIERRA DENALI



6.2 V8, ATOD, A/C, TILT, SC, P SEATS, HTD/COOLED SEATS, 20 CHROME WHEELS, ASSIST STEPS, AM/FM/XM/NAV/CD BOSE, DVD, T COVER, BOX RAILS, SUMMIT WHITE/COCOA LTHR, G6141A, 36,811 MILES

**\$38,995**

## 2012 DODGE LARAMIE LONG HORN



ATOD, 4X4, PW, PL, TILT, SC, AM/FM/CD, DVD, SUNROOF, WHITE/GOLD, SADDLE LTHR, G6424A, 69,234 MILES

**\$46,995**

## 2012 DODGE RAM 3500



SGL WHEEL LONG BOX LARAMIE, 4X4, 6.7L DIESEL, ATOD, PW, PL, TILT, SC, PSEATS, P SUNROOF, RUN BOARDS, BK CRIMSON MET, EBONY LTHR, C5653B, 52,751 MILES

**\$44,995**

## 2014 CADILLAC SRX



AWD, PREMIUM PKG, WHITE DIAMOND/SATIN LEATHER, P SUNROOF, LOADED, 5,289 MILES. C6488A.

**\$45,995**

## 2013 CHEVY 15 PASS EXPRESS



3500 EXT VAN, V8-ATOD, PW, PL, TILT, SC, KEYLESS ENTRY, SIDE SWING OUT DOORS W/ WINDOWS, WHITE/PEWTER, U5992A, 16,873 MILES

**\$23,995**

## 2014 FORD ESCAPE



AWD, 4CYL, ATOD, A/C, PW, PL, TILT, SC, P,MOON ROOF, AL WHEELS, CD, SILVER, EBONY/GREY CLOTH, 22,250 MILES. U6616A

**\$24,995**

## 2013 CHEVROLET EQUINOX LT2



AWD, 4CYL, ATOD, PW, PL, TILT, SC, P,SEAT, P,SUNROOF, AM/FM/XM/CD, ONYX BLACK/EBONY CLOTH, 31,377. U6614A.

**\$24,995**

## 2013 CHEVROLET CRUZE LT



4CYL, ATOD, PW, PL, TILT, SC, AM/FM/CD, AL WHEELS, ORANGE/EBONY INTERIOR, 29,657 MILES. U6570A

**\$15,995**

## 2014 FORD FOCUS ST



HATCHBACK 4CYL, 6SPEED MAN, PW, PL, TILT, SC, AM/FM/CD, 7,937 MILES. C5915A

**\$20,995**

## 2013 HYUNDAI TUCSON



AWD, AT, A/C, TILT, SC, AM/FM/CD, AL WHEELS, BLACK/EBONY CLOTH, 31,077 MILES. U6618A

**\$21,495**

## 2012 CHEVROLET CAMARO SS



CONVERTIBLE, 6.2 V8, ATOD, P ROOF, PW, PL, TILT, SC, AM/FM/XM/CD, VIC RED/EBONY INTERIOR, 8,648 MILES. G6118B

**\$29,995**

## 2006 CHEVROLET CORVETTE Z06 COUPE



7.0 V8 LINGENFELTER UPGRADE TO 620 HP, ATOD, PW, PL, TILT, SC, AM/FM/CD, BUILT IN RADAR DETECTOR, VELOCITY YELLOW/EBONY TITANIUM LEATHER, 12,000 MILES. C5578A

**\$49,995**



Mark Waggoner is "The Credit Doctor"

Credit Concerns?  
Apply online at  
[www.NDcreditDR.com](http://www.NDcreditDR.com)

MURPHY MOTORS INC.  
**26**  
YEARS  
1987-2013



SEE THESE SALES CONSULTANTS FOR QUALITY CAR BUYS!



Se Habla Espanol

1801 2nd Ave. W. Williston, ND Call 1-800-888-2927 or 701-577-2927 •Hours: Mon. 8am-8pm ; Tues.-Fri. 8am-6pm; Sat. 9am-5pm

[www.murphymotors.com](http://www.murphymotors.com)



SAVE — ON — S M O K E S

East side of  
Millers' Corner • Sidney, MT

\$29<sup>95</sup> for 200 Smokes

Freshly Rolled In Just 8 Minutes

Now Open

10am - 6pm Daily!

# Viniard Joins Watford City Veterinary Clinic Staff



**By Meagan Dotson**

The Watford City Veterinary Clinic welcomed Dr. Megan Viniard as their third veterinarian July 1, 2014. After graduating from Ohio State Veterinarian School earlier this year, she, her husband Jeff, and their Great Dane Zebulon were looking for a new and exciting opportunity.

"My husband and I wanted to take an adventure and wanted to start a new chapter of our lives by moving west," Viniard explains. "I always knew that I wanted to be a vet in a rural area, I just didn't know where."

According to Viniard, Watford City has been great, offering plenty of friendly and welcoming people with the small town feel that she appreciates. She enjoys being an active part of the community recognizing that the local vets are an important part of the town.

She always knew that she wanted to work with animals and FFA and 4H only fueled her interest, but she really became involved with livestock through 4H projects. Viniard liked the idea of being a part of agriculture by ensuring an animal's welfare and being involved in the production of safe food. Having a general practice allows her to operate as the first line of defense for her patients.

The Watford City Veterinary Clinic, originally founded in 1967 by Dr. Robert Nelson, has always had a strong cattle practice but recently has seen its small animal practice growing. Viniard is dedicated to not only an animal's physical well-being, but is very intrigued by animal behavior and the bond between people and their pets. Being involved with a therapeutic riding center as an undergraduate, she recognizes the importance of pets and the improved quality of life they can bring. Helping families have good pet interaction is an important part of her work.

Not only does Viniard get to experience the excitement that the oil boom has brought to the area, but she also gets to witness the expansion of the clinic itself. A new building is in the works south of town and will provide a much larger facility. Though she believes

the clinic would have grown regardless, she has no doubts that the influx of people has expedited the expansion.

Viniard's ability to treat both large and small animals makes her a great addition to the Watford City Veterinarian Clinic. They are located at 104 17<sup>th</sup> Ave NE, Watford City, ND 58854 and are open Monday-Friday from 8am-5pm and Saturdays 9am-12pm with an on-call vet 24/7. They can be reached at 701-842-4VET (4838) or online at [www.vetexperts.com](http://www.vetexperts.com).

# MANAGER SPECIAL

2011 Ford F150 CC

Harley Davidson 6.2 V-8, leather, navigation, sun roof, Sony stereo, powerfold running boards, loaded, black. 33,386 miles.

NADA Retail: \$40,950 • Eagle Ford Retail: \$39,995

For a limited time:

\$37,295

Trades Welcome!

Eagle Country Ford

"Experience the Eagle Country Difference!"

215 East Main • Sidney, MT | 433-1810 or 1-800-482-1810 | [eaglecountryfordsales.com](http://eaglecountryfordsales.com)

Book Your

Harvest & Holiday Parties

• Great Food • Great Fun | Large & Small Groups Welcome!

Catering At The Elks Lodge

123 3rd St. SW, Sidney

Call 406-433-5005 For Reservations

406-433-2406 • 123 3rd St. SW

Sidney, MT

Elks Lodge # 1782 • Open at 1pm Daily

Super Saving Sale

Modulars starting at \$60 per sq. ft.

LOCK IN SALE PRICE, TAKE DELIVERY LATER!

• WOW!! Triplewide 2790 sq. ft. with all the bells & whistles.

• 1600 sq. ft. modular, 3 bedroom, 2 bath, 6" walls, glamour bath, low-e windows, upgraded cabinets. ONLY \$103,900

SAVE \$1000's

NEW HOMES of the FUTURE

406-248-1100

[www.newhomesofthefuture.com](http://www.newhomesofthefuture.com)

7239 South Frontage Rd., Billings, Montana 59101

MID-RIVERS

LOCATION: Circle, MT - Mid-Rivers Headquarters, 904 C Avenue

OWNER: Mid-Rivers Telephone Cooperative, Inc. FOR MORE INFORMATION: Vickie (406) 485-3301

FREE BRATWURST LUNCH COMPLIMENTS OF MID-RIVERS

SATURDAY, SEPTEMBER 20, 2014 • 10:30 A.M.

(Immediately Following The Parade)

COMPUTERS, OFFICE EQUIPMENT & MISC

\*Hard drives have been removed from all laptops

(6) GATEWAY MONITORS

(7) PLANAR MONITORS

(6) HP MONITORS

DELL MONITOR W/ STAND

ACER MONITOR

(23) LENOVO LAPTOP\*

DELL LATITUDE D510 LAPTOP\*

GATEWAY LAPTOP\*

(2) HP 9050 B&W PRINTER W/ STACKER

D-390 DIGITAL CAMERA

D-390 DIGITAL CAMERA

KODAK EASY SHARE C340 CAMERA W/ CASE

BLACK TV STAND

(2) LEGAL 4 DRAWER FILE CABINET

LETTER 4 DRAWER FILE CABINET

LETTER 2 DRAWER FILE CABINET

ACCO FILE CABINET

SMALL WOOD TABLE

SMALL WOOD CABINET

WOOD TABLES

TAN METAL DESK W/ WOOD TOP

BLACK METAL DESK W WOOD TOP

WOOD GRAIN DESK

SOLID WOOD DESK

SMALL WOODEN BOOKSHELF

(7) OFFICE CHAIRS VARIOUS COLOR

10 FOOT MICROWAVE ANTENNA

RED/GRAY TELEPHONE BOOTH

(2) BLUE/GRAY PEDESTAL TELEPHONE BOOTH

INDOOR OAK TELEPHONE WALL MOUNT UNIT

VEHICLES & PICK-UP BOXES

2005 FORD FREESTAR FWD, AUTOMATIC, A/C TILT, CRUISE, AM/FM/CD, PW/PL, 3.9 V6, 114K

2006 CHEVY IMPALA, FWD, AUTOMATIC, A/C, TILT, PW/PL/PM, DRIVER PWR SEAT, AM/FM/CD, 3.5 V6, 148K

2007 CHEVY TRAILBLAZER 4X4, AUTOMATIC, A/C, TILT, CRUISE, AM/FM/CD, PW/PL, 4.2V6, 138K

2005 CHEVY TRAILBLAZER 4X4, AUTOMATIC, A/C, TILT, CRUISE, AM/FM/CD, PW/PL, 4.2 V6, 125K

2008 FORD 1/2T REG CAB 4X4, AUTOMATIC, AC, TILT, CRUISE, AM/FM, 4.6 V8, 140K

2009 FOR 3/4T EXT CAB 4X4, AUTOMATIC, A/C, TILT, CRUISE, AM/FM, 5.4 V8, 132K

2006 CHEVY 3/4T EXT CAB 4X4 W/TOPPER, AUTOMATIC, A/C, TILT, CRUISE, AM/FM, 6.0 V8, 137K

2009 FORD 3/4T EXT CAB 4X4 W/TOPPER, AUTOMATIC, A/C, TILT, AM/FM, 5.4 V8, 118K

2004 GMC 3/4T EXT CAB 4X4 W/LINEBODY, AUTOMATIC, A/C, TILT, AM/FM, 6.0 V8, 130K

2005 GMC 3/4T EXTCAB 4X4 W/LINEBODY, AUTOMATIC, A/C, TILT, AM/FM, 6.0 V8, 135K

2005 CHEVY 3/4T EXT CAB 4X4 W/LINEBODY, AUTOMATIC, A/C, TILT, AM/FM, 6.0 V8, 133K

2006 CHEVY 3/4T EXT CAB 4X4 W/LINEBODY, AUTOMATIC, A/C, TILT, AM/FM, 6.0 V8, 109K

1995 CHEVY 1T 4X4 W/BUCKET LIFT & LINEBODY, AUTOMATIC, AC, AM/FM, 454 V8, 125K

1982 CHEVY DIGGER W/C130 MAN BASKET, AIR SEATS/BRAKES, 5 SPEED W/HILO, 8.2 DETROIT DIESEL V8, 52K

(1) 1995 SEMI-TRUCK SLEEPER UNIT(FITS A KENWORTH T800)

(4) 2015 FORD PICK-UP BOX

AUCTIONEER'S NOTE:

Mid-Rivers has a very high standard of keeping their vehicles serviced. If you are looking for a good pickup for your farm or ranch and a vehicle that is in great shape and ready to drive, don't miss this sale! This will be a short sale starting after the parade on Town & Country Day. See you on the 20th!

Rick

Rick Kniepkamp

Statewide Auction

WE SELL & ADVERTISE ACROSS THE UNITED STATES

Circle, Montana [www.r-kauction.com](http://www.r-kauction.com) (406) 485-2548

Rick Kniepkamp (406) 485-2548 or cell (406) 939-1632


TELEPHONE

All information is from sources deemed reliable, but is not guaranteed by the Seller or the Auctioneers. Offering is subject to error, omission, and approval of purchase by owner. We urge independent verification of each and every item submitted to the satisfaction of any prospective buyer. It is every potential bidder/purchaser's sole responsibility to accomplish his or her due diligence in whatever manner he or she deems advisable. Announcements made sale day take precedence over any printed materials. The property sells "As-is-Where is." RK Statewide Auction Service and its auctioneers are acting solely as auctioneers for the seller.



20%  
OFF

In-Stock Carpet & Vinyl



JOHNSON

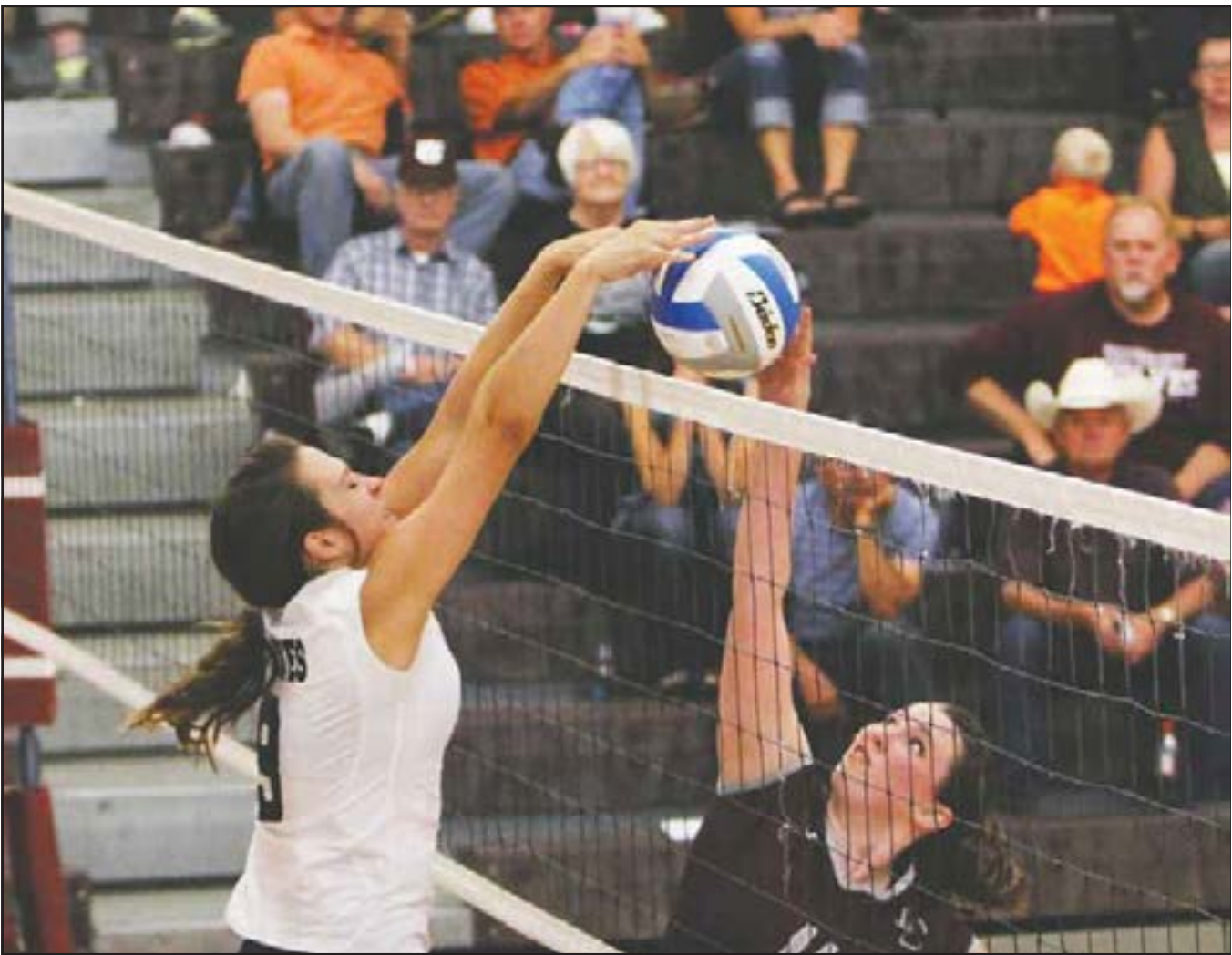
HARDWARE & FURNITURE

— since 1915 —

Hours: Mon.-Fri. 8 a.m.-5:30 p.m. • Sat. 8 a.m.-5 p.m.

406-433-1402 • 111 S. Central Ave., Sidney, MT

www.johnsonhardwareandfurniture.com



Battle at the Net

Watford City's Katie Mogen wins the battle at the net against Divide County. The Wolves defeated Divide County 25-22, 25-21, and 25-16 in Tuesdays match up. The Lady Wolves also defeated Kildeer 3-0 on Thursday. (Photo by Kathy Taylor)

Hail Loss Claims Closing Date Approaching

Last Day to File Hail Loss is October 1, 2014  
Submitted by Jayson O'Neill  
Montana Department of Agriculture

Public Information Specialist/Special Projects Helena, Mont. – After record hail crop damage and claims last year, the 2014 season has been below average in reported damage so far this year. The last day for producers with state hail insurance to file a hail loss claim is October 1, 2014.

"This year has been fairly quiet compared to last year. We've had a few events around the state, but to date we are below average. The department wants to remind producers that if they experienced any hail damage and have coverage through the state, they should get their claim in as soon as possible," said Walt Anseth, Rural Development Section Supervisor with the Montana Department of Agriculture.

As of September 1 with the possibility of more hail this season, there have been 321 claims filed with the department, down from 1,046 last year. Average losses for the state hail insurance program the last ten years total 539 claims with a 74% loss ratio, while this year's loss ratio to date is 45%.

"It's important for producers to remember that it is not the responsibility of your private carrier to inform the department of their hail loss. Hail loss claims need to be filed with the department by October 1, 2014," said Anseth.

Claim forms are available at [www.hail.mt.gov](http://www.hail.mt.gov) or by calling (406) 444-2402 or toll free at (844) 515-1571 to talk to a representative. If producers have already submitted a loss claim, the claim has been or will be processed soon.

The Montana State Hail Insurance Program was created in 1917 to provide basic hail insurance coverage on any crop grown in Montana. The program is directed by a five-member board consisting of the department director, insurance commissioner, and three other members appointed by the Governor.

The Montana Department of Agriculture's mission is to protect producers and consumers, and to enhance and develop agriculture and allied industries. For more information on the department, visit [www.agr.mt.gov](http://www.agr.mt.gov). MNAXLP

Homes & RV Lots Available!

Land For Sale • City Utilities • Paved Roads



Escape the hustle & bustle!



WHEATLAND HILLS

SUBDIVISION

1026 Juniper ST. • Culbertson, MT | (406) 551-5187 | Mon, Wed & Thurs: 9am - 7pm • Tues & Friday: 9am - 6pm

2014 Ram 1500



On Display:  
World's Best Truck.

Get Your Ram On!

Ryan

MOTORS

701-577-1111 1212 W 2nd St, Williston, ND



RAM