

The Roundup

PRSRT STD
U.S.
POSTAGE
PAID

The Roundup

(406) 433-3306
Fax (406) 433-4114
e-mail address:
info@roundupweb.com
www.roundupweb.com

Business Office:
Located at 111 West Main
Sidney, MT

Mailing Address:
P.O. Box 1207
Sidney, MT 59270

PRSRT STD
ECRWSS
U.S. POSTAGE
PAID
EDDM RETAIL

Local
Postal Customer

Wednesday, May 17, 2017

Volume 43 • Number 14

Trump Jr. Stumps For Gianforte in Eastern MT



Greg Gianforte addresses his supporters at the rally held in Sidney. Inset: Donald Trump, Jr. gives his endorsement of Greg Gianforte.

By Joshua Smallwood

A rally was held in Sidney on Thursday May 11th for the campaign of Greg Gianforte, the Republican nominee running for Montana's House seat in the May 25th special election. The seat, vacated after Incumbent Representative Ryan Zinke took the appointment of the United States Secretary of the Interior, necessitated the special election which Montana Governor Steve Bullock called for within 100 days of Zinke vacating the seat. Present at the rally were Chris Cox, executive member of the National Rifle Association and Donald Trump, Jr.

At the Richland County Event Center an enthusiastic crowd of Gianforte and Trump supporters waited outside in a brief, light rain at 2:00 in the afternoon, most wearing Gianforte stickers as they waited to enter the event center. Once inside, the air was buzzing with excitement as the crowd waited for the speeches to begin.

Gianforte began his speech with vigor and good humor, calling his opponent Rob Quist, "Nancy Pelosi in a cowboy hat."

Included in Gianforte's platform is senatorial term limits. "I don't think our forefathers ever envisioned career politicians and that's why I'm for term limits." Speaking upon the current state of D.C., Gianforte said, "I've seen the good, the bad and the ugly in Washington, and the bad far outweighs the good."

Upon the subject of the Second Amendment, Gianforte disagrees with his opponent Rob Quist. Gianforte quoted Quist as explaining that Montanans should "register our guns like we register our cars." Cox said, "When you talk about registering guns you're doing it for one of two reasons – to tax 'em or take 'em."

Cox explained that Gianforte has an A rating in the NRA, and upon Quist's rating, he said, "It takes a lot of effort to get an F rating in the National Rifle Association, but he earned it."

Gianforte extolled the virtues of protecting public lands, but also warned against "environmental extremists who are extinguishing our way of life." Gianforte is also campaigning on

states' rights, limited Federal government, strong military and borders, and lower taxes.

When asked whether Gianforte would work with the Democrats, he explained that he would, and gave an example of doing so previously. He spoke about working with both Democrat and Republican county commissioners in Paradise Valley when he came out against opening a mine in the area.

Donald Trump, Jr. stepped up to speak in front of a rapt audience when Gianforte finished speaking

"It's great to come to Eastern Montana because I know this is Trump country." He said to rousing applause. Trump explained that he visits Montana for the hunting and fishing. About Gianforte, Trump said, "He reminds me a lot of my father." He explained that both Trump, Sr. and Gianforte are both businessmen newly stepping into politics. About the Republican nominee, he cited his history of creating jobs and his future role if elected. "There are many families, households depending on his success."

On the subject of the Democrats, he explained his feelings that they are complacent. "They didn't learn anything from this last election cycle." However, Trump was optimistic about the future of the Republican party, but gave a challenge to the people when he stated, "We need more people who have the guts to step away from an easy life. Greg is willing to jump into the swamp and help my father do what needs to be done." He encouraged the audience to do the same, "with common sense and a work ethic, something that is lacking in D.C...Let's win this thing and let's show D.C. we mean business."

Gianforte is continuing the Trump method of campaigning at the grassroots. He has driven thousands of miles back and forth across the state and has visited every county in the state over the past 18 months. If elected, Gianforte will be Montana's sole Representative of the Montana's at-large congressional district. It is the nation's largest congressional district with a population of over one million constituents.

Alexander Public School Holds Technology Showcase, May 8

By Joshua Smallwood

On Monday, May 8th, Alexander Public School held a STEM & Technology Showcase from 6-8 PM. Represented were students from K-12 who built projects that demonstrated their knowledge of engineering and technology. Parents could tour the gymnasium, moving from exhibit to exhibit, starting with the youngest students who had learned basic elements of science and technology, where the exhibition extended to the upper classmen who were demonstrating 3-D printing, computer programming and robots both remote-controlled and robots that achieved mobility using sensors.

This exhibition is a product of a program that the school has instituted, called Project Lead the Way (PLTW). This includes STEM courses (Science, technology, engineering and mathematics) and Project Based Learning. The showcase was held to "demonstrate the knowledge and skills our students have gained through these initiatives."

One group of students won five awards for the 2015-16 North Dakota Championship Tournament in the FIRST Tech Challenge, a "robotics competition that allows students to compete head-to-head using a sports model."

Beginning two years ago, the programming is taught to students from kindergarten to 12th grade. Cathy White, Stem



Fourth grader
Paige Delaney
demonstrates
an incline.

and Robotics Program coach, said of the program, "math and science scores have increased exponentially. It's fantastic to see."

Long-time Sidney Eagles Coach Awarded

By Stephanie Ler

With more than thirty years on the books, and over 400 match wins and eight state titles, longtime Sidney Eagles wrestling coach Guy Melby was recognized as the AAU Outstanding Contributor in early May.

The Outstanding Contributor award is given to a coach, officer or committee member engaged in the activities of the AAU, the Amateur Athletic Union.

Melby is currently a District Officer and Folkstyle Chairman for the Montana AAU, and one of four coaches of the Sidney

Wrestling Club. Melby's been an integral player in bringing teams of students to Middle School Nationals in Des Moines, Iowa, and to the Disney Duals in Orlando, Florida, as well as overseas to Australia and Paris. He has also helped organize and coach wrestlers at various clinics and camps.

In all, Melby has accompanied thousands of Montana students to showcase their wrestling talents across the country, with many more in the future. Melby has certainly proved himself as an outstanding contributor to wrestling in Montana.



Guy Melby (Photo submitted)

Richland County Ladies Night On The Range June 13

The Natural Resources Conservation Service along with the Richland County Conservation District will be hosting an afternoon event for agricultural women in the area on Tuesday, June 13.

Kami Kilwine, NRCS area range conservationist from Miles City, Montana will lead a short "pasture walk" to learn about plant communities, grazing management systems, and noxious weed control. Bring your walking shoes and be ready to learn the local plants, proper grazing utilization levels, and how to monitor grasslands on your farm or ranch.

Bridgette Featherston from Culbertson, Montana will talk about farm and ranch photography. She'll bring knowledge from her farm/ranch upbringing as well as her agro-ecology and photography degrees to help you capture farm memories as well as monitor your rangeland. Bring your camera!

Kristen Larson, President of the Montana Beef Council and member of the Operating Committee for the National Beef Checkoff will be on hand to visit about the beef industry. She will present information about the national beef checkoff, beef nutrition, and general advocacy for the beef industry.

The event starts at 3:30 pm on Tuesday June 13 and ends with a meal at 6:00. It will be located at Richard and Connie Iversen's farm approximately 25 miles northwest of Sidney. The address is 13749 County Rd 332. From Highway 201, travel North on County Road 332 for 1 1/2 miles. Their place sits adjacent to the county road and will be the first house you come to on the left. Families are encouraged to attend and child care will be provided. Men are welcome but will be doing the dishes!

There is no charge to attend. Please RSVP to Julie Goss at the Richland County Conservation District (406-433-2103 ext 101) by Friday, June 9 to let her know for meal planning and child care. Transportation will be available for those who may need assistance walking.

So ladies, please join us for an afternoon of learning about your valuable rangeland resource and enjoy some good food and fellowship. We hope to see you there.

USDA is an equal opportunity employer and provider.

The MonDak Heritage Center Announces the MonDak Historical & Art Society 50th Birthday Party

The MonDak Heritage Center announces the MonDak Historical & Art Society's 50th Birthday Party Friday, May 26, 2017, 10:00 a.m. to 6:00 p.m.

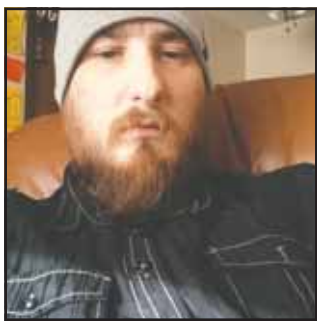
Join MDHC as they celebrate the 50th birthday of the MonDak Historical & Art Society, our founding organization, on Friday, May 26 from 10:00 a.m. to 6:00 p.m. at the MonDak Heritage Center, 120 3rd Ave SE, Sidney. Featuring birthday cake thanks to Reynold's Market, family-friendly Design-Your-Own Birthday Hats through our art program, photographs and stories about local arts and history preservation, door prizes, and more! FREE to the public and a great way to start the Memorial Day weekend. For more information call (406) 433-3500 or e-mail mdhc@richland.org.

Daniel Bowring Benefit May 22

Daniel was born with one kidney and it has since started failing landing him with a diagnosis of ESRD (end stage renal disease). In 2012 he got sick and ended up in the hospital and had to start dialysis. His kidney function is at 7% now. We are asking for any donations possible to help with his medical expenses, as he needs to take monthly trips to Bismarck, back and forth to the doctor. He has two wonderful children and a wife who are his world.

There will be a benefit in Daniel's honor 6-9 p.m., Monday, May 22, Moose Lodge in Sidney, to help raise funds. The benefit will include a silent auction, 50/50 raffle and a free will donation sloppy joes feed. If you are unable to make the benefit but would still like to donate an account has been set up in his name at Stockman Bank. Please let Stockman Bank know it's for the Daniel Bowring benefit when donating. The goal is to raise \$15,000.

For more information you can contact, Angela, 406-478-7122 or Beckka, 406-480-7388.



Daniel Bowring

MNAXLP

CONGRATULATIONS ZACH!

Check Out Our
May Specials

on Pizzas & Appetizers

EST. 1972

POWDER KEG

45 Years!

FAMILY DINING

PIZZA | BURGERS | BEER | AND MORE

Open Tues-Fri at 4:30pm • Sat-Sun at 2pm

Fairview, MT • 406-742-5180

FREE Ice Cream With All Purchases



Zachary Tabbert

Family Dining

PIZZA | BURGERS | BEER | AND MORE

Open Tues-Fri at 4:30pm • Sat-Sun at 2pm

Fairview, MT • 406-742-5180

FREE Ice Cream With All Purchases

This week
at the Club...

Summer Activities!

BOYS' AND GIRLS' CLUB
OF RICHLAND COUNTY



Wednesday, May 17

• Lego Day - Build a Bug Contest

Thursday, May 18

• Spider web Painting

Friday, May 19

• "Ants" or "Bee Movie" showing

Monday, May 22

• Shapes of Summer Crafting

Tuesday, May 23

• Scavenger Hunt

Wednesday, May 24

• Thank Your Teacher Day

Thursday, May 25

• Beach Volleyball

Friday, May 26

• BBQ & Talent Show

MODEL DRIVE-IN CLEANERS

SCIENTIFIC "ODORLESS" CLEANING

Sidney Pickup & Delivery:
Mon & Thurs

Watford City Pickup & Delivery:
Wed & Sat



Serving Watford City At

Meyer's Department Store

200 N Main | 701-444-2906

Mon-Fri: 10am - 6pm • Sat: 10am - 5pm

Serving Sidney At

Big Sky Embroidery And Design

108 E Main | 406-433-7679

Mon-Fri: 10am - 5pm

DRY CLEANING | SHIRTS & JEANS STARCH | WELDERS STARCH

1129 2nd Ave W • Williston, ND | 701-572-3734

Mon-Fri: 8am - 6pm • Sat: 9am - 3pm • Sun: 12-3pm

AREA RECOVERY GROUPS

MONDAYS:
12 p.m. — AA Monday Noon Group, Trinity Lutheran Church Ed. bldg., 214 S. Lincoln Ave, Sidney.
1 p.m. - 3 p.m. — Grief Reovery Support group at First Lutheran Church in the music room, Watford City.
6 p.m. — Al-Anon Family Group Meeting, Trinity Lutheran Church Ed. bldg., 214 S. Lincoln Ave, Sidney.
7 p.m. — Fairview Alive and Kicking at Fairview Alliance Church, 704 S. Western Ave.
8 p.m. — AA Group, Northern Pump & Compression, Watford City. Call 770-3603 or 770-2675 for directions or ride. Hotline/Info 701-609-8663.
TUESDAYS:
6:30 p.m. — Clebrate Recovery, Sidney Assembly of God Church, 414 East Main, Sidney.
7 p.m. — AA Welcome Home Group, Trinity Lutheran Church Ed. bldg., 214 S. Lincoln Ave, Sidney.
7 p.m. — 24-hour AA group meeting, Northern Pump & Compression, Watford City. Hotline/Info 701-609-8663.
WEDNESDAYS:
7 p.m. — NA meeting, MonDak Office, 725 W. Holly, Sidney.
THURSDAYS:
7 p.m. — NA meeting, MonDak Office, 725 W. Holly, Sidney.
7:30 p.m. — Al-Anon Meeting, Presbyterian Church, 316 4th Ave. NE, Watford City, ND.
8 p.m. — AA Group, Northern Pump & Compression, Watford City. Call 770-3603 or 770-2675 for directions or ride. Hotline/Info 701-609-8663.
FRIDAYS:
12 p.m. — AA Friday Noon Edition of Monday Noon Group, Trinity Lutheran Church Ed. bldg., 214 S. Lincoln Ave, Sidney.
12 p.m. - 1 p.m. - AA meeting, basement of Wilmington Lutheran Church, Arnegard.
6:30 - 7:30 p.m.- 5 Stones - Faith Based Recovery meeting, Sidney First Church of the Nazarene, 606 9th St. SW, Back door is open.
7 p.m. — Fairview Alive and Kicking Group, Fairview Alliance Church, 704 S. Western Ave.
8 p.m. — AA Welcome Home Group, Trinity Lutheran Church Ed. Bldg, 214 S. Lincoln, Ave., Sidney.
SATURDAYS:
9 a.m. & 7 p.m. — AA Welcome Home Group, Trinity Lutheran Church Education bldg., 214 S. Lincoln Ave, Sidney.
7 p.m. — AA 24 group meeting, Northern Pump & Compression, Watford City. Hotline/Info 701-609-8663.
SUNDAYS:
3 p.m. - Straight The Path Group of NA, Trinity Lutheran Church Ed. Bldg, 214 S. Lincoln, Ave., Sidney.
7 p.m. — NA meeting, MonDak Office, 725 W. Holly, Sidney.
7 p.m. — AA Welcome Home Group Trinity Lutheran Church Ed. bldg., 214 S. Lincoln Ave, Sidney.

STATISTICS

LAKE WATER LEVEL REPORT

Sakakawea

Current Elevation.....1842.0

Last Week's Elev.1841.6

One Year Ago1838.3

Release For Day (C.F.S.)35,000

SIDNEY WEATHER DATA

Source: MSU Eastern Agricultural Research Center

Date	High	Low	Precip.
May 8.....	65.....	42.....	0.00
May 9.....	70.....	34.....	0.00
May 10.....	70.....	37.....	0.00
May 11.....	80.....	53.....	0.00
May 12.....	86.....	44.....	0.00
May 13.....	80.....	52.....	0.00
May 14.....	69.....	46.....	0.13
Total YTD Precipitation.....			1.49

OBITUARIES

Shelly Rosaaen, 69

Sidney, MT

Funeral services for Shelly Rosaaen, 69, of Sidney, MT, were held at 10 a.m., Tuesday, May 16 at Pella Lutheran Church in Sidney with Pastor Joel Westby officiating.

Internment was in Sidney Cemetery, Sidney, MT, under the direction of Fulkerson-Stevenson Funeral Home of Sidney. Remembrances, condolences and pictures may be shared with the family at www.fulkersons.com.

Visitation was held on Monday, May 15 from 10 a.m. to 6 p.m. at the funeral home and one hour before service at the church.

Shelly died on Thursday morning, May 11 at her home surrounded by her family.

The MonDak Heritage Center announces the Third Annual Burgers, Brews, & Blues!

The MonDak Heritage Center announces the Third Annual Burgers, Brews, & Blues! Saturday, June 17, 2017, at 6:30 p.m. at the MonDak Heritage Center, 120 3rd Ave SE, Sidney, MT.

The MonDak Heritage Center presents the Third Annual Burgers, Brews, & Blues! Featuring the blues stylings of The Shuffle Bums from Livingston, Montana. Plus, grilled burgers for herbivores and carnivores alike with your favorite toppings, desserts and sides, and all the makings of a Great Summer Get-Together, including locally-crafted beer from Meadowlark Brewing Company. Doors open at 6:30 p.m. with music starting 7-7:30 p.m. It all happens at the MonDak Heritage Center, 120 3rd Ave SE, Sidney. Tickets are \$40/person or \$30 for MDHC Members. To purchase tickets, stop by the MonDak Heritage Center or call (406) 433-3500. Or order tickets online at mondakheritagecenter.org. Must be 21 or older to attend. Sponsored by Meadowlark Brewing Company, Wheat Montana Bakery & Deli, Candlewood Suites, Beagle Properties, Reynold's Market, and Reese & Ray's IGA. For more information call (406) 433-3500 or e-mail mdhc@richland.org.

Richland County Taxpayers Reminder

The Richland County Treasurer would like to remind taxpayers that the SECOND payment of 2016 REAL PROPERTY taxes are due by 5 p.m. on Wednesday, May 31, 2017. Payments and payment coupons may be mailed or brought to the Richland County Treasurer, 201 West Main, Sidney, MT 59270. Office hours are 8 a.m. — 5 p.m., Monday-Friday. For your convenience, payment drop boxes are located in the Courthouse lobby and in the alley behind the Courthouse. Any payments postmarked, dropped in the drop boxes or brought to the Treasurer's office after 5 p.m. on May 31, 2017 will be assessed penalty and interest charges according to MCA 15-16-101. Please call 433-1707 with any questions.

Burgers In The Park Tuesdays in May

The Sidney Eagle Wrestling club presents burgers in the park BBQ from 4:30-7 p.m. on Tuesdays, May 16, 23 and 30. The Sidney Eagle Wrestlers will be grilling burgers at Veterans Memorial Park in Sidney, MT. The cost for this is a free will donation.

This will help support the Sidney Eagle Wrestlers headed for the National Duals in Orlando, Florida, June 11-18, 2017.

Richland County Baseball Sign-Ups

Baseball sign-ups for Richland County closes on Friday, May 19. If you are interested in registering your child to play baseball, call Jodi at 433-7679.

Legion coaches are needed for Richland County baseball. If interested, please contact Hunter at 406-581-5883.

Umpires are needed for legion games in Sidney. Please contact Nate at 480-7184 if you are interested.

2017 Eagle Wrestling Camps

The 30th annual Sidney, MT Eagle wrestling camps are coming up in June with Guy Melby and Brandon Eggum.

The Little Guy Camp, June 5-7, consists of beginners through the sixth grade. Check in 9 a.m.-3 p.m. at the Sidney High School all three days.

The Intensive Training Camp, June 4-9, check in at the Sidney High School, three times a day, times are to be determined. A great opportunity to train at an intensive training camp with teams going to the High School National Duals in Florida. Get more matches than in a regular season. This camp will push you to the next level. Report at 6 p.m., June 4.

Technique Camp, June 7-9, grades sixth-twelfth. This camp is for the more advanced wrestler. Graduates this spring cannot attend this camp. If you have someone younger, and feel they are mature enough for the older camp, go ahead and enroll them. There are two sessions per day and workouts are intensive. This camp will prepare a wrestler for the upcoming season. Check in at the Sidney High School 9 a.m.-3 p.m. all three days.

ServSafe Food Safety Manager Courses Available

The Richland County Sanitarian is offering two sessions of the ServSafe Food Safety Manager Certification course on Thursday, June 8th, 2017, and Thursday, June 15th, 2017. Participants need only attend one day of the course. Courses will take place at the Sidney High School library computer lab from 8:30am to 5:00pm, and lunch will be provided.

The course will be a full eight-hour course with the online exam, and is open to anyone. Students are responsible for purchasing the course book and online exam test code and for opening an account with ServSafe in order to take the online exam.

Space is limited in each course. Register with Stephanie Ler at 406-433-2207 by May 26th, 2017.

MNAXLP

EVENTS

SEND US YOUR EVENTS!

THE ROUNDUP: PO Box 1207

111 West Main • Sidney, MT 59270

406-433-3306 • Fax: 406-433-4114 • Email: classads@esidney.com

RICHLAND COUNTY

Events in Sidney unless otherwise listed. MT Zone.

Wed., May 17

10 a.m.-4 p.m. - **Waterworks Art Museum Traveling Art Show** - Featuring artwork from the 38th Annual Juried Exhibit The Confluence, which represents professional and amateur work from local, regional and national artists from Montana, Idaho, Arizona, Virginia, Washington and Connecticut. This event continues through May 27. MonDak Heritage Center, Sidney, MT. Hours, Tuesday-Friday, 10 a.m.-4 p.m. and Saturday, 1-4 p.m. 406-433-3500.

Mon., May 22

6-9 p.m. - **Daniel Bowring Benefit** - Silent auction, 50/50 raffle, free will donation sloppy joe feed. Moose Lodge, Sidney, MT. There is an account set up in Daniel's name at Stockman Bank in Sidney if you would like to donate and are unable to attend the benefit. For more information call Angela, 406-478-7122 or Beckka, 406-480-7388.

Tues., May 23

4:30-7 p.m. - **Burgers In The Park BBQ** - Come help support the Sidney Eagle Wrestlers headed for the National Duals in Orlando, Florida June 11-18. Free will donation. Veterans Memorial Park. This event also occurs May 30.

Wed., May 31

5 p.m. - **Second Payment of the 2016 Real Property Taxes Due** - Payments and payment coupons may be mailed or brought to the Richland County Treasurer, 201 West Main, Sidney, MT, hours 8 a.m.-5 p.m., Monday-Friday. Payment drop boxes located in the Courthouse lobby and in the alley behind the Courthouse.

Sat., June 3

12 p.m. - **Riding For A Reason Poker Run & Fundraiser** - 12 p.m., registration; 1 p.m., kickstands up. \$10 registration fee or \$20 includes meal, which is also available to the public. High and low hand prizes; silent auction. 8 p.m., street dance with live music by "Trial By Fire". Everyone welcome, bring your bike, car, pickup or anything that can travel on the highway on wheels and participate in a great event and have tons of fun. Burns Creek Inn Bar & Grill, Savage, MT, 406-776-2323.

Mon., June 5

8:30 a.m.-12 p.m. - **Shepherd of the Valley Lutheran Church Vacation Bible School "Kingdom of the Son"** - Ages 3-6th grade. This event continues through June 9. Register online at svcsidney.org, call 406-433-7479 or at the church office, 211 E. Holly. A donation of \$30 per child is suggested.

9 a.m.-12 p.m. - **Summer Camp** - This event continues through June 8. Features original lesson plans, learning creative terms, techniques and processes, outside play when appropriate, daily snack time, Art Walk and reception following camp completion. Cost \$50 per child or \$45 per child for MDHC members. Call 406-433-3500 to enroll or sign up online: <https://squareup.com/store/mondakmuseum/item/summer-camp>. MonDak Heritage Center, 120 3rd Ave. SE, Sidney, MT, 406-433-3500.

Sat., June 10

9 a.m. - **Dan Miller Memorial Ride** - 9 a.m. sign up; 10 a.m. ride. There will be a poker run for those wishing to participate. This event starts and ends at the Waterhole #3 in Fairview. After the ride, family and friends can come for dinner, games, music, a silent auction and the sharing of memories. T-shirts will be available for purchase but sizes limited feel free to leave a post with your size to have one reserved. For more information call Tara at the Waterhole #3 in Fairview, MT, 406-742-5224 or Brent, 406-480-0065. An account has been set up at Merchants Bank in Fairview.

1 p.m. - **Neal Hermanson Ranch Rodeo** - Richland County Fairgrounds, Sidney, MT.

ROOSEVELT COUNTY

Events in Culbertson unless otherwise listed. CT Zone

Tues., May 23

7 p.m. - **Northeast Montana Land and Mineral Owners Association Meeting** - Anyone with oil and gas related questions is encouraged to attend. The meeting is open to the public. Community Center, Froid, MT.

Fri., June 9

Frontier Days - This event continues through June 11. Rodeos, a parade on Saturday, barn dance and concessions on the grounds. Contact Luke Anderson for more rodeo information, 406-787-5860. Rodeo Grounds, Culbertson, MT.

McKENZIE COUNTY

Events in Watford City unless otherwise listed. CT Zone

Fri., May 19

9 a.m. - **Community Clean Up Day** - Community clean up day to help get the Lewis & Clark Trail Museum ready for the summer season. 102 Indiana Ave., Alexander, ND. 701-828-3595.

Thurs., May 25

6-7 p.m. - **Coffee & Conversation** - Open to anyone wanting a voice to improve the community. Conversation on underage drinking and prevention. Door 204, 204 Main St N, Watford City, ND.

Fri., May 26

7 p.m. - **Extreme Midget Wrestling** - Buy tickets at www.roughridercenter.com. Rough Rider Center, Watford City, ND. For more information call 701-842-3665.

Sat., June 3

9 a.m.-12 p.m. - **Children's Fishing Derby** - Open to children 13 years and under. 9 a.m., registration; 11:30 a.m., lunch served. Watford City Fishing Pond. Free event. For more information call Julia, 701-842-8508.

WILLIAMS COUNTY

Events in Williston unless otherwise listed. CT Zone.

Thurs., May 18

7 p.m. - **Fort Buford History Book Club** - Join history buffs in a discussion of this month's selected book, "Tender Foot in Montana," by Frank Thompson. Free refreshments. Please call in advance, 701-572-9034. Missouri-Yellowstone Confluence Interpretive Center.

Sat., May 20

7:30 a.m. - **2017 Community Sale** - Concessions open, 7:30 a.m.; rummage and silent auction opens, 8 a.m.; live auction starts, 10 a.m. Raymond Family Community Center., Williston, ND. For more information basinunitiedway@hotmail.com or call 701-609-6259 to leave a message.

9 a.m. - **Walk MS** - With every step taken, every dollar raised, makes it much closer to ending multiple sclerosis forever. 9 a.m., check-in; 10 a.m., walk. Davidson Park, 11th Street and 9th Avenue West, Williston, ND. Register today, walkms.org, 855-372-1331.

9 a.m.-4 p.m. - **Confuence Quilters Monthly Meeting** - All experience levels invited and instruction provided. Bring your own lunch and unfinished projects. Missouri-Yellowstone Confluence Interpretive Center. 701-572-9034.

Mon., May 29

12 p.m. - **Williston Boys Baseball Golf Tournament** - Entry fee \$50 per player which includes green fees, 2 carts per team and a steak fry to follow the tournament. Williston Municipal Golf Course. To enter or for more information contact Larry Grondahl, 572-7897 or John Liffbrig, 572-4068.

1 p.m. - **Flag Raising Ceremony** - The 6th infantry will be at Fort Buford for the flag raising ceremony to open the summer season. The Missouri-Yellowstone Confluence Interpretive Center hours will be 9 a.m.-6 p.m. and Fort Buford hours will be 9:30 a.m.-5:30 p.m.

DAWSON COUNTY

Events in Glendive unless otherwise listed. MT Zone

Sat., June 10

8 a.m.-2 p.m. - **Buzzard Day 2017** - Celebrating Makoshika Park. Yoga, running, guided hikes, scavenger hunt, disc golf tournament, treasure hunt, Ladonna's dance at the amphitheater, vendors selling food and drinks. Makoshika State Park, 1301 Snyder Ave., Glendive, MT. Participants for the fun run can register online or Friday evening, June 9, last minute registration 9 a.m., June 10.

10 a.m. - **Glendive Cancer Support Group** - Survivors and caregivers welcome. GMC Canary Center, 202 Prospect Dr., Glendive, MT. 406-377-4639.

Summer Events on Maah Daah Hey Trail

By Stephanie Ler

The 97 miles of the Maah Daah Hey trail span from the north end of the US Forest Service CCC Campground, 20 miles south of Watford City, to Sully Creek State Park, south of Medora. The trail, named for the Mandan Indian phrase, which means “an area that has or will be around for a long time”, takes its visitors through the picturesque rolling prairies, jagged badlands, and winding rivers, and offers potential sightings of golden eagles, elk, and wild horses, among an array of other wildlife.

The Trail boasts eight trail segments, and ten over-night campsites, many with RV access and running water. Horseback riders, hikers and bicyclists share the trail, and trails are closed to motorized vehicles. The trail crosses the Little Missouri at the Elkhorn Crossing, and the Sully Crossing, so be prepared with weather information when visiting these segments.

Though the trails are open year-round, it is during the summer season that most rugged outdoor adventurers plan their visits. The Trails will host a number of exciting events during the 2017 season.

The first event this season, the Badlands Gravel Battle, is a bike race across up to 120 miles of the scoria-laden gravel roads throughout the Maah Daah Hey Trails. Beginning at Theodore Roosevelt National Park in Medora, participants may opt for the Little Loop, at 44 miles, the Short Loop, at 77 miles, or the Full Loop, a full 120 miles of single-track biking through the rugged backcountry. Aid stations are available at regular intervals, and the course is fully marked. Food and drinks are available at the finish line, and an award ceremony will award top finishers and outstanding performers. Pre-registration and a small fee are required. Registration is open until May 26th with the race on Sunday, May 28.

For a full-body experience, try the first annual Bull Moose Mudder on Saturday, June 10th. This Badlands obstacle course mud run starts with a pistol shot at 1PM at the Medora Family Fun Center at the entrance to the Medora Campground. The race is a three-mile loop with three categories of participants; a shorter run just for fun, a longer run for more competition, and an endurance category, where participants complete as many competitive laps as they can in 3 hours. The course itself includes an array of challenges, from lifting, carrying, navigating natural obstacles, river crossings, hill climbing and a man-made obstacle course.



Photo from www.experienceland.org

There is also a Kid's Fun Run following the awards ceremony, where children of all ages are allowed to complete obstacles with parental supervision. Registration and a small fee are required for participants. Registration deadline is Friday, June 9th.

For the most extreme adventurer, try the Maah Daah Hey 100, a competitive bike race challenge that spans the full length of the Maah Daah Hey single track trail. A shot gun start is at 6AM sharp on Saturday, August 5th at the CCC Campground. Aid stations and bail-out points are available at regular intervals throughout the race, but this race is not for the faint of heart. Shorter races, ranging from 13 miles to 75 miles are also available, and participants may choose to complete the race as a relay team. Registration is open online until August 1st, and fee submission is required.

If running is your forte rather than biking, try the Maah Daah Hey Trail Run on Saturday, July 9th. The race begins at the CCC Campground and ends at the Family Fun Center in Medora. Various distances are available, ranging from a 5K to half and full marathon lengths, all the way to the full 106 miles. Aid and bail out stations are available. Registration and fees are required to be submitted by July 28th.

All registration fees for these events go to the Save the Maah Daah Hey non-profit organization to upkeep the trails. For more information about these events or to register, visit www.experienceland.org. For additional visitor information about the Maah Daah Hey Trails, visit www.mdhta.com.

GET GROWING!

Huge Selection of:

- Bedding Plants •
- Perennials •
- Shrubs •
- Trees •

Mon-Fri: 9am - 7pm
Sat: 9am - 6pm • Sun: 12-5pm
3515 West Front St
Williston, ND | 701-572-6083

Dan Miller Memorial Ride June 17-11

The Dan Miller Memorial Ride will take place June 17 – June 11. Sign up will begin at 9:00 a.m. at The Waterhole #3. We plan to begin the ride by 17:00. This will be a poker run for those wishing to participate. First stop will be the Cattle-Ac in Sidney, followed by the CQ Bar in Lambert, the Stage-coach in Culbertson and Smokies in Bainville. Last stop will be back in Fairview at the Waterhole #3. Families and friends are encouraged to join us after the ride for dinner, games, music, a silent auction and the sharing of memories.



Dan Miller

T-shirts will also be available for purchase but sizes may be limited so feel free to leave a post with your size to have one reserved. (Price still to be determined) We also plan to have memorial bracelets for sale before, during and after the ride. More info on where to purchase those and when they will be available will be posted on the Dan Miller Memorial Ride Facebook page. The funds will be going to help Dan's family. For questions or donations call Tara at the Waterhole at (406)742-5224 or Brent at (406)480-0065. An account has also been set up at Merchants Bank in Fairview under the Daniel Miller Memorial Fund. Thank you all for your support! Let's ride for Dan!

Bieber Graduates With Honors



Amy Bieber

On May 6, 2017, Amy Bieber graduated from MSU Billings with a Bachelor of Science degree in Business Administration: Accounting emphasis and a minor in Finance. She maintained a 3.99 GPA, graduating Magna Cum Laude and as an Honors Graduate. She was also named one of MSUB's Outstanding Undergraduates of 2017 and was awarded the Montana Society of CPAs Medallion for Outstanding Accounting Senior.

OPEN HOUSE

• MAY 18, 2017 •

• 12PM - 4PM •

• GUIDED TOURS •

BURGERS • BRATS • DESSERT

3817 23rd Ave NE • Watford City, ND

For more info call MEC at 701.444.9288.

5th ANNIVERSARY SALE

THURS-SUN, MAY 18-21

FIRST 25 CUSTOMERS EACH DAY POP A BALLOON TO RECEIVE AN ADDITIONAL 5-50% OFF THEIR PURCHASE!

FREE HOTDOGS SAT, MAY 20 11:30 TIL GONE **REGISTER FOR PRIZES! DRAWING HELD SUN, MAY 21 AT 4PM**

REFRESHMENTS EACH DAY!

HUGE SAVINGS THROUGHOUT THE STORE!

FACTORY REPS IN THE STORE EACH DAY:

- ATN • Alps • Springfield Army • Weatherby
- Hornady • Vortex • Montana Silversmiths
- Benelli • Lowrance • And More!

CHECK OUT THESE SALES!

Columbia Sportswear	20% off
Grizzly Drinkware	\$5 ⁰⁰ off
Grizzly Coolers	\$20 ⁰⁰ off
All In Stock Fishing Rods, Reels & Rod/Reel Combos	20% off
Allen soft sided Gun Cases	20% off
All In Stock Knives	20% off
All In Stock Safes	30% off
Stack On 36 Gun Safe	Reg. \$1399, Now \$599
All Firearms On Sale	Up To \$100 ⁰⁰ off

One Location To Serve You Better!

440 N Central Ave • Shops at Fox Run
Sidney, MT

406-433-1800 | Mon-Sat: 9am - 6pm • Sun: 10am - 4pm

Only in Montana... only at Stockman Bank

FREE online features:

- eMobile • eBank • ePay • eStatements
- Free VISA® Check Card (our convenient debit card)

Switch to Stockman 406 checking today – Montana is unique and your banking should be too!

Montana's Brand of Banking

\$100 minimum opening deposit with no minimum balance/service charge.

301 West Holly Street
Sidney: 433-8600

stockmanbank.com
©2017 Stockman Bank | Member FDIC

Golden Roundup

Roughing It, 21st Century Style

NETZER LAW OFFICE, PC

Estate Planning And Real Estate

Licensed in Montana and North Dakota
1060 S. Central Ave. Ste. 2, Sidney, MT
406-433-5511 • netzer@midrivers.com

By Lois Stephens

We learned in school about the hardships those who settled the west endured: no running water, leaky, drafty shacks made from sod or tar paper, working from dawn to dusk to clear the land and get the crops in, sickness, cold, shortage of food; the list goes on. Our idea of roughing it today can't in any way compare with roughing it one hundred years ago.

My husband and I are currently roughing it 21st century style. We just sold our home. We needed to sell our house in order to purchase the cabin we intend to live in by summer's end. The cabin, currently under construction off site, will likely arrive here ready for habitation by the

first part of July.

In the interim, we have set up camp on our property, making use of two different structures in the process. Our 12x16 building serves as an office and sleeping quarters, and we utilize as our kitchen area a small corner of a 12x28 shop. We do have a wood stove AND a barbecue for cooking, already a huge step ahead of those who first settled the region. Plus we have electricity which means we can make use of a microwave, crock pot, and any other electric device of our choosing. Although we have no indoor plumbing of any sort, a spring with potable water bubbles on the property, we collect rain in barrels for dishes and washing, and we rented a porta potty for use when nature calls.

We do have a place to shower off site, and I have invested in one of those solar shower kits. I am itching to try it, but the weather needs to cooperate first, as it proves difficult to heat water with a solar setup if the sun refuses to shine. So with all this in place, what more could we ask for?

The week before we closed on our house and moved up to our dream property, my husband delighted in telling people we would be homeless in a week. Hah, homeless indeed! We have a better, more spacious living space than a goodly portion of the rest of the world. It may be small, somewhat cramped at times, but it works, we have very few complaints, and most importantly this feels like home. We do look forward to the arrival of our cabin, but we are roughing it quite well in the meantime. Two small buildings work better than a camper and provide us with all we require.

We figured out already that most of the belongings we have in storage we really don't need. Two thirds of what we own sits in a conex sea container as we await the arrival of the cabin. We miss practically nothing in that storage unit. It truly amazes me how little a person actually needs to get by comfortably.

We have encountered a few small issues, all easily fixable at this point in time. For instance, on these chilly spring mornings, using the porta potty can deliver quite a jolt to the system when bare warm flesh meets hard cold plastic. However, we discovered an easy fix. The porta potty has a split seat, not a solid round one. We sacrificed an old pair of thick tube socks and slid one sock over each side of the split seat. Now we have a (somewhat) cushioned warm seat in our throne room so the temperature outside can do as it pleases, we can sit in comfort. Those socks work beautifully.


Our second issue involved a dog, no counter space, and a plate of roast beef. We cook either on the barbecue or on the wood stove, and we employ a tea cart which stands barely two and a half feet tall as a counter top for our utensils and other paraphernalia we use to prepare a meal. When I arrive home from work, I always take our big Doberman who weighs eighty pounds and who can quite easily lay her head on the tea cart if she so desires, for a walk. While I take Ruby for a little jaunt, my husband prepares dinner.


This particular evening I arrived home, my husband was in the process of preparing a meal, so I left with Ruby for our after work walk. Ruby runs free, so she always roams several yards or more in front of me. We took a short walk, then headed back home as I felt famished and figured that a good meal of leftover roast beef awaited my return.

I arrived back at the shop, a minute or so behind Ruby. We always leave the door slightly ajar so Ruby can come and go as she pleases, so naturally Ruby had already entered the shop. I walked in behind her to discover a spatula on the floor, a few stray grease spots splattered hither and yon, the plate that held the nicely sliced roast beef distressingly empty, and Ruby licking her chops in a vain attempt to appear guiltless and to disguise the

Continued on next page.


“The highest use of capital is **not** to make **more money** but to make money to **do more** for the **betterment** of life.”—Henry Ford



**Crestwood Inn**
410 3rd Ave. S.W. • Sidney • 433-3721
crestwd@midrivers.com

“Retirement Living At It’s Best”

Large 1 bed apartments • Individual climate control
• Close to downtown • Transportation available
Activities • Noon meals • Support Services
Security cameras



Come Home To Crestwood!

why should I consider the Leonard P. Nelson Cancer Center?

I won't have to go far for treatment

because I love waking up to the sounds of my own family

it's not just the people in white coats who help me cope

because together we're healthier



Receive leading-edge treatment and care closer to the ones you love. With your courage and our care, we can work together to help you find and receive the most advanced treatment possible. Schedule an appointment today by calling 701.774.7464.

**CHI St. Alexius Health**
Imagine better health.™

1301 15th Avenue West
Williston, ND 58801
CHIStAlexiusHealth.org

Williston Medical Center

It's All About Saying Goodbye

FULKERSON STEVENSON FUNERAL HOME

315 2nd St NW
Sidney, MT • 406-488-2805

Watford City: 701-842-2490
Williston: 701-572-6329
Tioga: 701-664-2122

Remembrances & condolences may be shared with family at:
www.fulkersons.com

FIREMEN'S ANNUAL BREAKFAST

- Free Will Donation | Rides & Fun For The Kids | Come Support Our Firemen! -

Sunday, May 21 • 6 am - 1 pm • Sidney Fire Hall

Serving sausage, french toast, scrambled eggs, juice & coffee

This will be the last breakfast at the current Fire Hall.



Student Exhibit Documents Social, Cultural Perspectives On The Yellowstone River

Who owns a river? That is the question that Dr. Bruce Wendt's junior history class at Billings West High School attempted to answer last spring. Their research and project became an exhibit at the Western Heritage Center entitled, "Who Owns the Yellowstone?" With help from the Montana Department of Natural Resources and Conservation (DNRC), that exhibit will be traveling to public libraries along the river from late March through mid-June.

Each year, one of Dr. Wendt's classes creates a project that becomes an exhibit at the Western Heritage Center in Billings. The students used Dr. Susan Gilbertz' "The Yellowstone Cultural

Inventory—2006" for this project. Dr. Gilbertz, a Professor of Geography at MSU-Billings, originally interviewed 300 people who lived or worked near the Yellowstone River as a part of a project for the Yellowstone River Conservation District Council.

The students designed short videos and 10 posters that reflect opinions and thoughts from the interviews. "Projects such as this challenge students to research, reflect, and then create images for an audience they will never meet," said Dr. Wendt. The exhibit includes facts about the Yellowstone River, emotional connections to the river, ecology, historic use, threats to the river, challenges along the river, governance, and how to preserve Montana's unique water heritage.

This traveling exhibit provides visitors an opportunity to see

and hear water users' thoughts and ideas from agricultural, residential, recreational and civic perspectives. When reflecting on what she had learned creating the exhibit, Haley Heitz, one of the student creators, said, "I learned that the Yellowstone isn't owned by anyone but still has a lot of ownership, which makes a fuzzy line."

"This project is a unique opportunity for high school students to explore challenging topics from many different perspectives. The issues surrounding the Yellowstone River are very complex, but the students addressed the challenge head-on and developed a really dynamic, professional exhibit," said Kevin Kooistra, Executive Director of the Western Heritage Center. "We're pleased that additional communities will have access to this informative display as a result of this partnership with the DNRC and the regional libraries."

The exhibit will be at the Richland County Library, at 121 3rd Avenue NW, From May 20 - June 1, 2017. The library is open Mondays through Saturdays.

Roughing It...

Continued from previous page.

demise of the beef.

It transpired that my husband, not expecting us back quite so quickly, had left the meat on the tea cart while he ambled across the property to take advantage of the cushioning the tube socks provided. While he answered nature's call, oblivious to the fact that our dinner lay in grave peril, Ruby and I returned home, our greedy dog helped herself to delicious roast beef without even asking, and two disgruntled old people ate cottage cheese for supper.

We learned that lesson well. We now place all edibles well out of reach of lurking dogs.

To date, roughing it in this century and in this country has proved easy. We still have internet and cell phones, and most of the modern conveniences. We have experienced a few minor issues but we've figured out how to make life easier, and we find that this life suits us very well. If this lifestyle inches us towards our goal of living on the mountainside in our own little cabin, what an easy way with very minor inconveniences we have to put up with in order to make our dream come true.

One last thought: When we face a small setback of some sort, I tell my husband to think of this as a great adventure. He looks at me and snarls, "This will be our LAST great adventure."

RoundupWEB.COM

Everything Roundup on the web.

MNAXLP

ROB QUIST
FOR U.S. CONGRESS

With 80% of the Wealth in America controlled by 7% of Americans, there are enough millionaires in Congress.

I am running as a voice for ALL Montanans.

"STAND WITH ME, MONTANA... AND I WILL STAND UP FOR *You*"

REMEMBER TO VOTE
THURSDAY
MAY 25, 2017

PAID FOR BY ROB QUIST FOR MONTANA

VOTE

OPEN HOUSE FOR HOUSE & REAL ESTATE AUCTION

(+/-1.33 Acres) Sun, May 21, 2-4pm • 13374 Highway 200, Fairview, MT



PROPERTY & AUCTION LOCATION: From Fairview, MT- Take Highway 200 W towards Sidney for 1 mile. **LEGAL DESCRIPTION:** Section 18, Township 24 N, Range 60 E, #86 Parcel N/A 1.33 acres in SENE PER COS #86. The full legal description is too long to print. **HOUSE DESCRIPTION:** 1232 sq. ft. house, 2-bedrooms, 1-full bath, finished full basement w/many rooms and ¾ bath. Attached 3-car garage, 6' chain link fence in back yard. Terry and Kathy Gaffield have decided to sell their real estate and house. This house had been well taken care of and is in excellent shape. The property is just a mile from Fairview and has 1.33 acres along Highway 200. There are five apple trees and three fruit bushes.

ACTUAL SALE SATURDAY JUNE 10, 2017 10:00 A.M. HOUSE WILL SELL AT NOON



Circle, Montana **Statewide Auction** (406) 485-2548

WE SELL & ADVERTISE ACROSS THE UNITED STATES

www.r-kauction.com

Rick Kniepkamp (406) 485-2548 or cell (406) 939-1632

DRIVE AND DISCOVER



2016 CHRYSLER 200S ALL WHEEL DRIVE



stock #2642-A

All wheel drive, 3.6-v6, comfort group, navigation and sound group & hyper black aluminum wheels

MSRP..... \$35,575
Rebate -\$5,336
Action Auto Discounts..... -\$3,244

SALE \$26,995

2017 JEEP RENEGADE SPORT 4X4



stock #4855-A

Remote start, 5.0 Uconnect® & backup camera

MSRP..... \$25,160
Rebate -\$4,000
Action Auto Discounts..... -\$1,502

SALE \$19,658

Must qualify for all rebates.

ACTION AUTO

Our Website Is Open 24/7



GARY MCPHERSON
Hm: 488-7759



GARY SCHOEPP
Cell: 489-2312



JON NELSON
Cell: 206-669-5285

433-2312 • 1-800-788-2312
www.actionautochryslerdodgejeep.com
220 East Main, Sidney, MT



Richland County Fair & Rodeo

"Load 'Em Up & Head to the Richland County Fair & Rodeo!"

August 2-5, 2017

PRESALE TICKETS AVAILABLE

(Tickets Available At The Fair Office & Online)

BEGINNING MAY 23 • 8:30 AM

Package Deal \$68: 1 Concert Ticket, 1 Admission Button, 1 Thurs Rodeo Ticket & 1 Fri Rodeo Ticket

In Concert

Sat, Aug 5th • 7:30 pm



TRACE ADKINS

Carnival
PayOnePrice
Passes \$20

Concert Tickets

Presale:

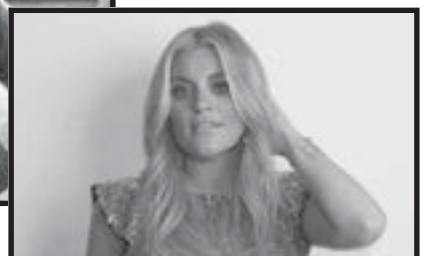
General: \$45 • Reserved: \$50

During Fair Week:

(If Available)

General: \$50 • Reserved: \$55

With Special Guest
Lauren Alaina



PRCA Rodeo | Brookman Rodeo LLC
Thurs & Fri, August 3rd & 4th
7:30 pm each night

406-433-2801

www.richlandcountyfairandrodeo.org

Interested In Rejuvenating Your Pastures?

By Trisha Feiring, District Conservationist, Beach Field Office

Do you have a pasture(s) that is not performing? This sounds like some of the pasture around our ranch or some old CRP acres that are now in permanent pasture with water. So what do we do? You need to come and hear the great speaker we have coming to the open the gate workshop- rejuvenating soils, pastures, and profits in Wibaux, MT.

Greg and Jan Judy of Clark, Missouri run a grazing operation on 1620 acres of leased/owned land. Greg and Jan went from being nearly bankrupt in 1999 to paying off a 200 acre farm and house in three years with custom grazing on leased land and are completely debt free today. Today they own 4 farms and lease 12 additional farms. Greg is convinced the best way to get a poor pasture that is sod bound, with the lack of diversity, to perform is to employ high density grazing to jump start the soil life into a productive pasture.

The livestock they use in their planned grazing operation include grass genetic cow/calf, bred heifers, bulls and stockers along with a flock of hair sheep.

Greg wrote a book in 2001, entitled "no risk ranching, custom grazing on leased land", which gives a complete breakdown on the methods they used to build their operation from scratch. In 2008 Greg wrote a second book "comeback farms, rejuvenat-

ing soils, pastures and profits with livestock grazing management". Greg's newest book covers the methods they use with holistic high density grazing, multi-species grazing, grass finishing animals, and eliminating costly input.

Greg has given numerous talks and schools all over the United States, New Zealand and Canada teaching the benefits of planned grazing, leasing land and multi-species grazing and custom grazing. The Judy's website is: www.greenpasturefarms.net

Now, do you want to increase soil structure, improve the land and make a profit? Yes, then make sure to mark your calendar because Mr. Greg Judy will be speaking on June 22, 2017 at 1pm at the Wibaux exhibit hall and this will include an indoor and outdoor session. For more information and to get a registration form please contact the Wibaux conservation district or NRCS at 406-796-2211 EXT 3 or the Golden Valley soil conservation district or NRCS at 701-872-4551 ext3.



Financing for whatever moves you.

Michele Herres, Agent
State Farm Agent
216 S Central Avenue Suite B
Sidney, MT 59270
Bus: 406-488-2400

2.54%
AS LOW AS

From cars to trucks and motorcycles to RVs, let State Farm Bank® finance or refinance all your vehicles. **Bank with a good neighbor®.** **CALL ME TODAY FOR MORE INFORMATION ON OUR COMPETITIVE RATES.**

State Farm Bank™

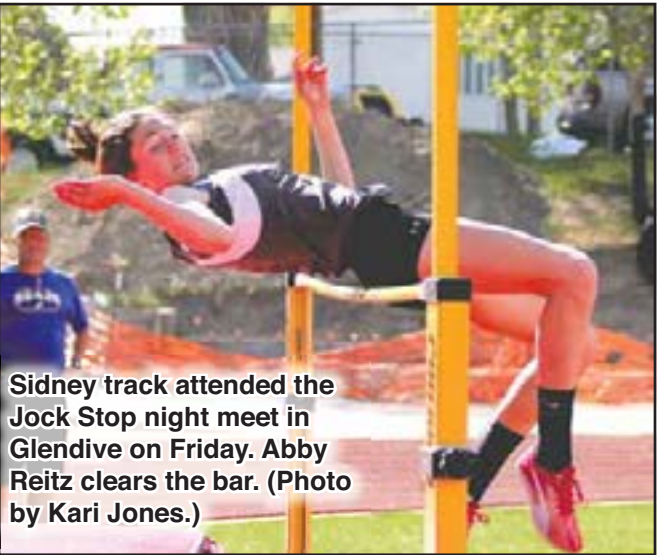
*Annual Percentage Rate (APR) as of 11/20/13. Subject to credit approval and other requirements. The rate you receive may be higher. Advertised rates are subject to change at the Bank's discretion. Some products and services may not be available in all service areas.

P096010.1

State Farm Bank, F.S.B.
Bloomington, IL

LENDER MEMBER FDIC

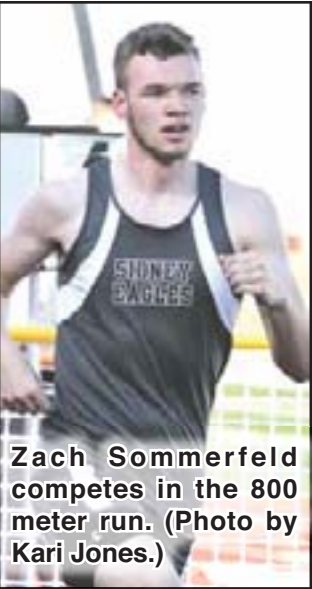
Sidney Track Team Competes at Glendive Jock Stop Invitational



Sidney track attended the Jock Stop night meet in Glendive on Friday. Abby Reitz clears the bar. (Photo by Kari Jones.)



Katlyn Keithley (above) and Connor Fink (below) compete at the Glendive Jock Stop Invitational last Friday where Sidney took first place. The Eagles travel to Belgrade this weekend to compete at the Divisional Meet. (Photo by Kathy Johnson.)



Zach Sommerfeld competes in the 800 meter run. (Photo by Kari Jones.)



Breanna Frank rounds the first corner of the 400 meter dash. (Photo by Kari Jones.)



Trace Jones hands off to Michel McGinnis. The relay team of Jones, McGinnis, Alec Lovegren and Dawson McGlothlin broke the Sidney school record with a time of 43.10. (Photo by Kari Jones.)

SPRAY-EZ OF NORTH DAKOTA

OFFERING SPRAY FOAM INSULATION FOR:

- Residential
- Commercial
- RVs & Other Motor Homes

WE'LL SPRAY IT ALL!

Spray-EZ Foam Insulation Is Locally Owned • Reasonable Rates
Call Dean At: 701-799-3323 | Alexander, ND | Licensed & Insured

DEAN'S BACKHOE SERVICES

All Bobcat Backhoe Work!

WILL TRAVEL ANYWHERE!

Rock & Dirt Work
Landscape & Roto-Tilling • Rural Water
Basements • Driveways • Sewers

Locally Owned • Reasonable Rates
Call Dean At: 701-799-3323 | Alexander, ND | Licensed & Insured

The world awaits. (You don't.)

Next time you travel, hop on one of our fast, daily flights to Billings Logan International for easy connections to wherever you're going. And enjoy the ride.

\$49*
from each way

Havre

Glasgow

Wolf Point

Sidney

Glendive

Billings

capeair.com 800-CAPE-AIR

*Including all taxes and fees. Fares are subject to availability and other conditions. Fares may change without notice, and are not guaranteed until ticketed.

The Roundup Classifieds

Reach Over 21,000 Readers Each Week In Eastern Montana & Western North Dakota And Always On The Internet at roundupweb.com
(Paypal required for online purchases)

Add a photo to your classy online! (additional charge)

Now Taking Credit Cards! (5% charge added to all transactions)

Get Up To 30 Words For Just \$9.25 • Deadline: Monday noon

**HELP WANTED
SEVERAL POSITIONS**

Produce clerk, meat wrapper, deli manager, bakery manager, deli/frozen clerk. Apply in person, Reese & Ray's IGA, Sidney; or mail, 203 2nd St. NW, Sidney, MT, 59270.

BARTENDERS WANTED

Enjoy a private club atmosphere. Bartenders needed at the Elks Lodge, Sidney. 406-433-2406.

CARRIERS NEEDED

Need extra cash or want to get some exercise while getting paid? We have carrier routes available in most parts of Sidney. 406-433-3306 or fill out

application at The Roundup, 111 W. Main, Sidney.

**FOR RENT
3 BEDROOM HOME,
SIDNEY, MT**

Open kitchen and living room, 2 bedrooms, 2 bathrooms; basement, family room, 1 bedroom, 1 bathroom. Double car garage, screened in porch, large fenced in yard, located in very nice neighborhood. \$1,500/month. 406-488-1990.

3 BEDROOM HOME

3 bedroom, 2 bath home, all appliances included, central air. Call 406-488-6183, leave a message.

3 BEDROOM TOWNHOUSE
3 bedroom, 2 1/2 bath with attached garage, modern kitchen with appliances, Northview subdivision. Call 406-489-5195.

APARTMENT IN SAVAGE
2 bedroom apartment in Savage, washer and dryer, \$425 a month plus utilities. For more information call 406-798-3673.

RETAIL & OFFICE UNITS

Retail & office units available for lease. Util. inc. & free WiFi. Choose your space (s) from any of our 3 levels. 406-480-7279 or 406-489-1945. Inquire at 111 W. Main, Sidney.

**FARM & RANCH
FOR SALE**

4010 JD serial #21T56616, 2800 hours on rebuilt motor, needs a clutch. Mounted Farmhand 511 loader with bucket and grapple fork, hay basket with push off and manure fork. Tractor and loader are in rough condition. Motor starts and runs good. Uses no oil, \$6,500 or best offer. Must sell, 701-744-5729.

**BLACK ANGUS BULLS
FOR SALE**

For sale by private treaty Black Angus bulls bred for calving ease. Call Lowell Stevenson, 406-687-3635.

**INSTALLED
WINDSHIELDS
FOR MOST MAKES & MODELS
ONLY \$240**
MAGNUM MOTORS
Williston, ND • 701-572-0114 • 701-770-6375

FOR SALE

Yearling Polled Hereford bulls, 75-80 lbs. birth weights, easy fleshing, great disposition, bred for calving ease, milk production, high maternal traits. Great cross on black cows. Keith Rockeman, Rockeman Polled Herefords, Grassy Butte, North Dakota. 701-863-7010. Raising Polled Herefords for 65 years.

FOR SALE

Portable corral panel trailers. Continuous fence 5 bar or 6 bar 20 foot sections. Gates made out of 2" pipe. Corner post station braces. Call for more information, 701-770-2260.

SIDNEY FEEDS SALE

Sale on Sweet Pro feed supplements and Redmond Salt products. For the best for your cattle and horses, call 406-488-4338.

**VERMEER HAYING
EQUIPMENT**

See us today for all your haying & feeding equipment, sweeps & farm oil. Anderson Vermeer Sales & Service. Open Mon.-Fri., 8 a.m.-5:30 p.m. 701-828-3358 or 701-828-3482 (after hrs.). Alexander.

SERVICES

WELDING

Welding & repair work. No job is too small. Portable welder, reasonable rates. 701-444-2936.

**NOW SELLING
NEW & USED TIRES**
offering light mechanics as well
MAGNUM MOTORS
Williston, ND • 701-572-0114 • 770-6375

Gartner Denowh
ANGUS RANCH
50 Private Treaty Angus Bulls
Chad Denowh 406-798-3541 • Mick Denowh 406-798-3355
www.gdar-angus.com

The Roundup
AUTO TRADER
2003 HARLEY FAT BOY
16200 miles, very good condition, excellent ride, leather saddle bags, 2 up seat, pull cover

For Info, Call: 406-978-3013
**\$8,000
OR BEST OFFER**
ONLY \$17 A WEEK!
If you run it for two weeks & it doesn't sell, we'll run it for two more weeks **FREE!**
classesads@esidney.com • (406) 433-3306 for details

R&L PAINTING

Will paint houses, barns, quonsets, silos, grain bins, etc. References available. R&L Painting, call 406-488-8244 or 406-480-4055.

**ROUND OR
RECTANGULAR TABLES &
CHAIRS FOR RENT**

Parties, weddings, get together. Ultimate Showdown Assoc. Located at Hefty Seed Co. South of Sidney, has tables & chairs for rent. Will deliver. Call 406-488-4338.

**FOR SALE
FIFTH WHEEL RV**

34 ft, 2009 Prairie Schooner, model P34FLR, made by Gulf Stream, locally owned, used very little, excellent condition, half price of new, king bed, 2 TVs, 4 slides, surround sound, electric jacks, electric awning, central vac, extreme weather insulation package. Call 701-842-2556.

PIZZA OVEN

2 deck commercial gas pizza oven, lge, free standing, \$2,000. 406-480-7279.

WANTED

PONY OR DONKEY

Looking for a pony or donkey for my grandkids to ride. Call Pat Browne, 701-744-5678.

CARRIERS NEEDED

Need extra cash or want to get some exercise while getting paid? We have carrier routes available in most parts of Sidney. 406-433-3306 or fill out application at The Roundup, 111 W. Main, Sidney.



QUALITY
PREPOTENT
**YEARLING
ANGUS
BULLS**
DR Angus
(701) 565-2377

FOR SALE
**Yearling &
2-Year-Old
Angus Bulls**
BAR JV ANGUS
406-798-3398
406-798-3653 • 406-480-5676

Is your Farm &
Ranch business
Roundup Ready
See Us Today
We make good
business better!
The Roundup
406-433-3306
info@roundupweb.com

ICARE
Join our team! **Job Opportunities**

- Ambulance Director
- Anesthesia/Perioperative Technician
- Certified Nurse Assistant - Nursery
- Certified Scrub Technician
- Clinic RN or LPN Float
- Dining Services Cook
- Extended Care
- Certified Nurses Assistants
- LPN
- RN
- Information Systems Technician
- Project Lead
- Laboratory Medical Technologist/Medical Laboratory Technician
- Pharmacy Retail Support Technician
- Registered Nurses
- Acute Care
- CCU
- OB
- Surgery
- Respiratory Therapist

SIDNEY HEALTH CENTER
Exceptional Care for Life

TOP 100

BENEFITS: Health insurance • Generous paid leave • Competitive pension plan • Flexible spending accounts • Voluntary dental, vision, critical illness and accident insurance • Life and AD & D Insurance • Hospital and Fitness Facility Discounts

For additional information or to apply online, please visit our website or contact:
Human Resources • Phone: (406) 488-2571 • HR@sidneyhealth.org
216 14th Ave SW • Sidney, Montana

Visit Our Website at: www.sidneyhealth.org

*Seed
For Sale*

DURUM CERT. JOPPA CERT. ALKABO BARLEY CERT. TRADITION HAYBET HAY BARLEY	OATS MORTON GREEN PEAS CERT. VIPER RED LENTIL CERT. MAXIM
---	---

**SOME VARIETIES
ARE LIMITED.**

Signalness Farms
Larry: 701-770-2500
Jason: 701-770-0926
Watford City, ND

Check us out weekly
with...
Roundup

Monthly with...
Golden Roundup

Or take advantage of
all our publications
every day at...
**Roundup
WEB.COM**

SY Soren New! AgriPro's Highest Return Per Acre	Brennen Balanced With High Yield & Protein
SY Ingmar Latest AgriPro Release Very High Protein PLUS High Yield Potential	SY605 CL High Yield CLEARFIELD® Spring Wheat
Richlea Lentils	Trapeze Yellow Pea New High Yielding Variety with Good Height & Standability
SKOV SEED Randy Skov Fairview, MT 406-747-5217 Home 406-489-0165 Cell	Call For Varieties Not Listed

Call Today!
AgriPro
*CLEARFIELD and beyond are trademarks of BASF. ©2002 BASF Corporation. All rights reserved. Always read and follow label directions. PVP 1994—Unauthorized propagation prohibited. Plant variety protection granted or applied for Syngenta varieties.

The Roundup Classifieds

Reaching over 11,079 Households in Western North Dakota and Eastern Montana Every Week

(Please Print)

1	2	3	4	5	6
7	8	9	10	11	12
13	14	15	16	17	18
19	20	21	22	23	24
25	26	27	28	29	30
31	\$9.35	32	\$9.45	33	\$9.55
34	\$9.65	35	\$9.75	36	\$9.85 (etc.)

**\$9.25 for 30 words or less; 10¢ per additional word
Payment Must Accompany Ad**

Number of words _____ x Number of Times _____ = Cost \$ _____

Mail To:
The Roundup
PO Box 1207, Sidney, MT 59270

Name _____

MEMORIAL DAY

Deadlines for our Wednesday, May 31 issue of The Roundup are:
10am Thursday, May 25 for display ads & 10am Friday, May 26 for classified ads & news.

**We Will Be Closed
Monday, May 29th.
Have A Safe And
Happy Weekend!**

The Roundup
111 W. Main, Sidney
406-433-3306

Red Cross Offers Flooding Preparation Tips

With flooding already occurring in many Montana counties, the American Red Cross of Montana has a few tips to help residents prepare.

- How to Prepare
- Here's how to be Red Cross Ready:
- Know the difference:
 - o Flood/Flash Flood Watch—Flooding or flash flooding is possible in your area.
 - o Flood/Flash Flood Warning—Flooding or flash flooding is already occurring or will occur soon in your area.
 - Download the Emergency App for iPhone >> or for Android >> or go to <http://www.redcross.org/get-help/prepare-for-emergencies/mobile-apps>
 - Assemble an emergency preparedness kit.
 - Create a household evacuation plan that includes your pets.
 - Stay informed about your community's risk and response plans.
 - Educate your family about how to use the Safe and Well website.
 - Protecting Your Family
 - Talk with your family about what to do if a flood watch or warning is issued. Discussing floods ahead of time helps reduce fear, especially for younger children.
 - Ensure that every member of your family carries a Safe and Well wallet card.
 - Make sure you have access to NOAA radio broadcasts:
 - o Find an online NOAA radio station
 - o Search for a NOAA radio app in the Apple Store or Google Play
 - o Purchase a battery-powered or hand-crank NOAA radio in the Red Cross Store
 - Find out if you are located in a floodplain, which is considered a Special Flood Hazard Area. If so, you are still eligible for flood insurance. Check with your city or county government (start with the Building or Planning Department) to review the Flood Insurance Rate Maps, published by the Federal Emergency Management Agency (FEMA).
 - Find out if local streams or rivers flood easily.
 - Keep insurance policies, documents, and other valuables in a safe-deposit box. You may need quick, easy access to these documents. Keep them in a safe place less likely to be damaged during a flood. Take pictures on a phone and keep copies of important documents and files on a flashdrive that you can carry with you on your house or car keys.
 - Protecting Your Pets & Animals
 - Prepare a pet emergency kit for your companion animals.
 - Ensure that any outbuildings, pastures, or corrals are protected in the same way as your home.
 - If installing or changing fence lines, consider placing them in such a way that your animals are able to move to higher ground in the event of flooding.
 - Protecting Your Home
 - When flooding is imminent:
 - Use sand bags when flooding is expected:
 - o It takes two people about one hour to fill and place 100 sandbags, creating a wall one foot high and 20 feet long.
 - o Make sure you have enough sand, burlap or plastic bags, shovels, strong helpers, and time to place them properly.
 - o If a flood is expected, some communities will offer free sandbags to residents. Be sure to watch or listen to the news so you can access these resources.
 - When preparing for future flooding:
 - If you live in a floodplain, elevate and reinforce your home to make damage less likely during a flood.
 - Check with a professional to:
 - o Raise your furnace, water heater, and electric panel to floors that are less likely to be flooded. An undamaged water heater may be your best source of fresh water after a flood.
 - o Install check valves in plumbing to prevent floodwater from backing up into the drains of your home. (As a last resort, when floods threaten, use large corks or stoppers to plug showers, tubs, or basins.)
 - o Construct barriers such as levees, berms, and flood walls to stop floodwater from entering the building (if permitted by local building codes).
 - o Seal walls in basements with waterproofing compounds to avoid seepage through cracks.
 - Remember: standard homeowners insurance doesn't cover flooding but flood insurance does. Get information at www.FloodSmart.gov.
 - MAKE A DONATION To help the people affected by disasters, please make a donation to support American Red Cross Disaster Relief. Your gift enables the Red Cross to provide shelter, food, emotional support and other assistance in response to disasters. To donate, please go to www.redcross.org/montana or call 1-800-272-6668. Contributions may also be sent to American Red Cross of Montana, 1300 28th Street South, Great Falls, MT 59405.
 - VOLUNTEER People who are interested in ongoing or longer-term volunteer opportunities can visit www.redcross.org/montana and click on "Volunteer" to start their application. Training is free and open to the public. A background check will be performed on all applicants.
 - About the American Red Cross:

The American Red Cross shelters, feeds and provides emotional support to victims of disasters; supplies about 40 percent of the nation's blood; teaches skills that save lives; provides international humanitarian aid; and supports military members and their families. The Red Cross is a not-for-profit organization that depends on volunteers and the generosity of the American public to perform its mission. For more information, please visit redcross.org or visit us on Twitter at @RedCross.

Experience Eastern Montana Bible Camp

By Dee Jorgensen

There is something magical about a summer camp experience. Each and every camp in the world is different. Not merely because of geography or location, but because of the traditions and people who have touched the camp. Every camp has hidden treasures of history and traditions that give it character and identity.

Camp is an independent experience that shapes one's character and life — a controlled, safe environment where children and youth are able to make their own decisions about simple things (what activity they want to do, how many s'mores they want to make, or what clothes they are going to wear) and about important things (who they will hang out with . . . who will be their friends).

Camps give kids a chance to practice being the best they can be. They experience a place designed to create happy memories and encourage self-expression. They have the opportunity to climb towers, swim, go off the jungle swing, shoot an arrow, and even experience the success of winning the big game! It stays with them forever. Kids will learn from a full range of emotions and human experiences including homesickness, friendship, disagreements, team work, frustrations, jubilant success, and more.

If you've been to camp, you're not surprised to hear about the benefits of summer camp. Experiencing life at camp yourself as a child, you know the profound positive effects that still matter to you as an adult, and you also know that you want the same thing for your own kids.

Eastern Montana Bible camp has all of this to offer and it is literally in our back yards. Located between Lambert and Richey, EMBC is offering camps for all ages this summer. Teen camp kicks off on June 5th -10th for kids entering 9-12th grade. Junior High Camp June 12th-17 for kids entering 7-8th grade. Following with Junior camp for kids entering 5th and 6th grade, June 19th-23rd and Pioneer camp for kids entering 3rd -4th grade June 26th-30th. Children entering K-2 grade can attend Little Bugs Day camp July 11th and a parent may attend to accompany a child. A motor cycle trip is planned for July 13-16 and Family camp is available July 28th-30th. A lady's retreat is scheduled in September and a Men's retreat next March.

Parents please let your children experience something magical at summer camp and bring home treasures of friendships, memories, and good times at Eastern Montana Bible Camp. For more information or to register please see our web page at www.embcamp.org or call Larry at 406-583-7573.

MNAXLP

Williston Downtowners Seek Artists For Mural Project

The Williston Downtowners Association is teaming up with downtown building owners to place art in the alleyways. If you are interested in putting your art on one of these buildings please submit 2-5 examples of your work by May 29 to the Williston Downtowners Association. The goal is to have ten murals in the downtown alleyways by June 17.

For questions, email willistondowntowners@gmail.com or call/text 7015809343.

Watford City Job Fair June 14; Registration Open to Employers

The Williston Spring 2017 Job Fair attracted more than 1,000 job seekers and 60 employers. North Dakota Job Service is partnering with the Watford City Area Chamber of Commerce, McKenzie County Job Development Authority and Williston Regional Economic Development to bring an all industry Job Fair to Watford City June 14. The job fair is open to all employers and all positions. The deadline for businesses to register for the job fair is June 7 (unless the job fair sells out earlier). The Job fair will be held from 3-7 p.m. at the Rough Rider Center in Watford City.



Yellowstone Chiropractic Clinic
(406)-433-4757 222 2nd. Ave. SW
1-866-433-4757 Sidney, MT 59270

Dr. Ryan Laqua
Chiropractic Physician &
Certified Medical Examiner



• Sports Injuries • DOT Physicals
• Personal Injuries & Pain Conditions



~Life
~Health
~Medicare Supplement
~Medicare Part D
~Group Health
~Vision
~Dental
~Long Term Care

BlueCross BlueShield of Montana

Aflac

vsp
Vision care for life

UNION GATEWAY AGENCY

*Your Insurance Team
Independently
Representing:*

309 2nd St NW
Sidney MT 59270
phone 406-488-4366
fax 406-630-4433

©2011 Vision Service Plan. All rights reserved. VSP and Vision care for life are registered trademarks of Vision Service Plan.

www.uniongatewayinsurance.com

ALFRED KRON ESTATE REAL ESTATE & CONTRACTOR SUPPLY

AUCTION

SATURDAY, MAY 27, 2017 • 9:00 AM
2814 W TOWNE STREET • GLENDIVE, MT



- Generators, Tools • Antiques, Shop
- Doors, Lumber, Windows, Tile • Other Misc Items

• Equipment, Trailers & Vehicles

- Case 580C diesel backhoe w/frontend loader, 4114 hours
- Ditchwitch 1010 w/Wisconsin engine
- Bobcat 610 skid steer w/bucket
- Industrial air compressor, Ford engine, electric start, mounted on trailer, 1719 hours
- 16' car trailer
- 1974 GMC truck, 4 & 2 transmission, 15' box & hoist
- 1994 extended cab Chevy pickup, 4x4 V8, auto

For more info & showings on parcel 1: Rita Stortz of MT East Realty: 406-939-0659 or Rick Kniepkamp: 406-485-2548 (Parcels 2&3) - Lunch will be available.



Circle, Montana

RK

Rick Kniepkamp

Statewide Auction (406) 485-2548

WE SELL & ADVERTISE ACROSS THE UNITED STATES

www.r-kauction.com

Rick Kniepkamp (406) 485-2548 or cell (406) 939-1632



Statewide Auction

Auctioneer's Note: Alfred was a well-known contractor/carpenter in the Glendive community for 57 years. The real estate is in prime location in Glendive with very attractive buildings. These buildings could be used for storage, a business or rentals. There is a wide variety of items at this sale with some being new. This is a sale you will not want to miss! Hope to see you May 27th! -Rick

MAKE YOUR NEIGHBORS HAPPY!

JOIN OUR CARRIER TEAM

\$100
SIGNING BONUS!
(Distributed over a 5 month period)

PLUS COLD WEATHER BONUS DURING THE WINTER MONTHS & PERIODIC RAISES!



111 West Main • Sidney, MT | 406-433-3306 • 1-800-749-3306

Enjoy the great outdoors this year!

Low Rate Secured Loans

We Finance The Fun Things In Life!

Richland
FEDERAL CREDIT UNION

201 West Holly St. • Sidney, MT (406) 482-2704
18 East 2nd St. • Culbertson, MT (406) 787-5890



We Carry All Your Recreational Needs!

- Fishing Tackle & Bait
- Coolers • Ice
- Beer & Pop
- Snack Food
- Fishing & Hunting Licenses

FARM & HOME
SUPPLY

809 East Main • Sidney, MT | 406-433-3400



PROP SHOP

PROPELLER SERVICE
REPAIR • BALANCE • PITCH




Modern Machine WORKS


Aluminum
Stainless Steel
Skeg Repair

701-572-7741 • 1-800-319-7741 | Williston, ND

Explore

RICHLAND COUNTY





PADDLEFISHING ON THE YELLOWSTONE RIVER

Turn In Your Favorite Fishing Story And Get A



FREE

Rod/Reel Combo

Submit your favorite fishing story and photos to The Roundup...and if we publish them, you will receive a free rod/reel combo!

OUTDOORS

Surge In Yellowstone May Coincide With Paddlefish Opener



FWP Region 7 Fish Biologist Caleb Bollman eases a paddlefish back into the river while a seasonal fisheries staffer looks on. Paddlefish are expected to start arriving in larger numbers as the Yellowstone River rises at Intake Dam this week.

By MT FWP

A surge of water is heading downstream, just in time for the opening of paddlefish season on the Yellowstone River Monday. That's according to Mike Backes, fisheries manager for Fish, Wildlife & Parks Region 7.

"There's a pulse of water that's projected to peak Tuesday or Wednesday" at Intake Fishing Access Site near Glendive, Backes said.

Increasing river flows tend to stimulate paddlefish migrations and concentrate fish below the Intake Dam area as they are attempting to swim upstream to spawn. It also increases chances for harvest, making Intake a real hot spot for anglers.

Monday's opening day is limited to catch-and-release paddlefishing at Intake only, Backes noted. The first harvest day is Tuesday, May 16. Harvest days are Tuesday, Wednesday, Friday and Saturday, while catch-and-release days are Sunday, Monday and Thursday. Paddlefishing hours are 6 a.m. to 9 p.m. The harvest season ends June 30, or sooner if officials anticipate

the harvest cap of 1,000 fish will be approached.

Based on North Dakota's paddlefish season – which ended on Saturday after four harvest days – and the expected rise in the Yellowstone, Backes anticipates that Montana's paddlefish season also could wrap up quickly.

In Montana, anglers may harvest one paddlefish per season. Monday marks the season opener from the Bighorn River to Intake Dam, downstream of Intake to the North Dakota line, and from Fort Peck Dam to North Dakota. The section from Fort Peck Dam to Fort Benton opened May 1. The Fort Peck Dredge Cuts season, open to bow and arrow harvest only, starts July 1. Anglers are encouraged to review the paddlefish regulations for requirements specific to each area.

Anglers are reminded that anyone harvesting a paddlefish anywhere in the state is required to report it within 48 hours of the catch. Harvest can be reported at Intake or by phone at 1-844-668-5932 or 406-444-5604. A paddlefish hotline has been set up to give periodic updates on harvest. That number is 853-1616.

Kids Fishing Day Held May 11



The MonDak Chapter of Walleyes Unlimited held their annual Kids Fishing Day May 11 for Sidney area 5th graders at Gartside Dam. Lily Jones poses with the perch she landed.



Anders Lassey and Hattie Brothen display a northern pike they hooked. (Photos submitted)



Tristyan Brost is all smiles after catching this perch.



Isaiha Martinez shows off his bass he caught.



LONG X
LIQUOR STORE



New Specials Every Week!

Ice • Liquor • Wine • Pop

Mon-Thurs: 9am - 9pm • Fri-Sat: 9am - 10pm • Sun: 1-6pm
Highway 85 • Watford City (Long X Visitor's Center) | 701-444-3335

IN ADDITION TO CARS, TRUCKS & FARM IMPLEMENTS

WE HAVE TIRES FOR

Firestone TOYO TIRES

- Horse Trailers
- ATV's
- Boat Trailers
- Flatbed Trailers
- Utility Trailers
- Campers

- Motor Homes
- Garden Tractors
- Golf Carts
- Wheelbarrows
- Tillers
- More

If we don't have it, we can get it! We can also get rims.

WESTERN TIRE

1601 South Central Sidney, Montana 433-3858
Open 7-5:30 M-F