

# The Roundup

PRSRT STD  
U.S.  
POSTAGE  
PAID  
The Roundup

(406) 433-3306 or 1-800-749-3306  
Fax (406) 433-4114  
e-mail address:  
info@roundupweb.com  
www.roundupweb.com

Business Office:  
Located at 111 West Main  
Sidney, MT

Mailing Address:  
P.O. Box 1207  
Sidney, MT 59270

PRSRT STD  
ECRWSS  
U.S. POSTAGE  
PAID  
EDDM RETAIL

Local  
Postal Customer

Wednesday, October 1, 2014

Volume 40 • Number 33

## Fairview Homecoming



One of the grade school floats in the Fairview Homecoming parade on Friday titled "Hang em out to Dry."



### Fairview King and Queen

Fairview held their homecoming last week. Monte Cayko was crowned king and Faith Vitt was crowned queen. (Photo by Melissa Gackle.)

Right: A subcommittee on the Efficiency and Effectiveness of Federal Programs was held at the Richland County Fair Event Center Friday morning. Senator Jon Tester helmed the proceedings as Chairman and invited many witnesses to testify about their specific field of interest regarding the change in the area since the boom started and what sort of impact we are experiencing now. (Photos by Suzie Schieffer)

## "The Bakken: Examining Efforts To Address Law Enforcement, Infrastructure, and Economic Development Needs"



Left: Senator Jon Tester listens intently during testimony at the hearing on Friday.



## "The Elm Coulee Oil Field: Birthplace of the Bakken Oil Boom" Geo-marker Placed During Ceremony Friday

Lt. Governor Angela Mclean, presents Geo Marker to the City of Sidney this past Friday. Mayor Rick Norby and the Director of Montana Department of Transportation, Mike Tooley, were also present. The Geological Program was started in 2006 by then 1<sup>st</sup> Lady Schweitzer and 8 years later we now have 50 markers in Montana. This program has since been picked up by 1<sup>st</sup> lady Bullock with Sidney being the first of 8 more planned geo-sites throughout Montana. The ceremony was held at the Sidney Chamber of Commerce. These Geo-Markers explain which minerals and resources are located in this area. Pictured above is Lt. Governor Angela Mclean with Rau Elementary students (Photo by Suzie Schieffer)

## Candidates' Forum at Girard Hall

Girard Homemakers will host a candidates' forum on Monday, October 13 at 7 pm at Girard Hall. All local, state and national candidates have been invited. Ballot issues will also be discussed.

Girard Hall is located 6 miles west of the junction of Hwy 16 and Hwy 201.

Come prepared to ask questions and enjoy a piece of homemade pie.

## LYREA Holding Food & Coat Drive

In the spirit of Co-op Month, Lower Yellowstone REC is holding its annual Food and Coat Drive. Please help those in need by bringing coats, hats, mittens or gloves and non-perishable food items to LYREC at 3200 W. Holly, Sidney. Cash donations are also welcome. Please remember to check expiration dates on food items. Any expired food items must be thrown away.

## Upcoming Workshop in Watford City for Parents, Becoming a Love & Logic Parent Series

By Marcia Hellandsaas  
NDSU Extension Agent,  
McKenzie County

Is being a parent draining your energy? Parents of tots to teens use these Love & Logic strategies to energize, reduce the nagging and complaining from your children, promote thinking and responsibility, and give consequences with empathy. Put a laugh back into your parenting in this four-week series!

Become a Love & Logic parent will be held on Tuesdays and Thursdays, from 5:30 pm to 8:00 pm (CT) on October 7, 9, 14 and 16 at the McKenzie County Extension Service at 205 6<sup>th</sup> Street NW (located behind the Courthouse in the Rural Water/Economic Development Building) in Watford City. The classes will be free of charge and include a workbook and lite meal.

Participants MUST register by calling the McKenzie County Extension Office at 701-444-3451 or emailing: marcia.hellandsaas@ndsu.edu. Pre-registrations are requested by Friday, October 3.

This program is provided through funding from the ND Department of Human Services – Children and Family Services.

## ND Agricultural Producers Invited to Attend Important Farm Bill Meetings

Submitted by Dan Janes

USDA North Dakota Farm Service Agency (FSA) is partnering with the North Dakota State University Extension Service to host a series of informational meetings to discuss the Agricultural Risk Coverage (ARC) and Price Loss Coverage (PLC) programs authorized by the Agricultural Act of 2014.

The 2014 Farm Bill authorizes three program election options: PLC, ARC-County (ARC-CO) and ARC-Individual (ARC-IC). Producers must make a one-time decision to retain or reallocate crop bases, to retain or update program payment yields and select the type of coverage (price protection, county revenue protection, and/or individual revenue protection) for the 2014-18 crop years.

The informational meetings will explain the program election, base allocation and yield update process.

Meetings will be held in the following locations:

October 9, 8am-10am, Williston, Williston Research Extension Center, 14120 Highway 2

The meetings are free and open to the general public.

"Farm owners and operators have a lot of decisions to make for these new programs and we want to make sure everyone has as much information as possible before making enrollment choices," said Aaron Krauter, North Dakota FSA State Executive Director. "All interested producers, regardless of operation size, should join us to learn more about these new programs."

For more information about the meetings, please contact your local FSA office. MNAXLP



**Janet Sergent**  
Real Estate  
Loan Officer  
NMLS ID# 525727

**REAL ESTATE FINANCING**  
For Home Purchases & Refinancing  
Stop in today and see Janet Sergent in Sidney



**Richland**  
FEDERAL CREDIT UNION

www.richlandfcu.com  
201 West Holly St. • Sidney, MT (406) 482-2704  
18 East 2nd St. Culbertson, MT (406) 787-5890

**For all your Farm/Ranch, Recreational, Residential, and Commercial needs.**



**Alan Seigfreid**  
**Amanda Seigfreid**

**Jim & Janice Knudsen** 120 2nd St. N.E. • Sidney Mt. 59270  
**Broker/Owners** (O) 406-433-3010 • (C) 406-489-3010  
email: [alans@midrivers.com](mailto:alans@midrivers.com)  
**Website: [www.missouririverrealty.com](http://www.missouririverrealty.com)**



**Yellowstone Chiropractic Clinic**  
(406)-433-4757 222 2nd. Ave. SW  
1-866-433-4757 Sidney, MT 59270



**Dr. Ryan Laqua**  
Chiropractic Physician &  
Certified Medical Examiner

• Sports Injuries • DOT Physicals  
• Personal Injuries & Pain Conditions



**Appliances**  
imagination at work®



**Fridges, Stoves, Washers, Dryers & More!**



**Main Appliance**

**Appliances Sales Center**  
Mon-Fri: 10am - 6pm | 406-433-1823 | 214 S. Central Ave • Sidney, MT

**Unreal RC**  
The Ultimate in Remote Control Hobbies

*Brushless Electric - Greater Speed and Reliability*

**GAS & ELECTRIC CARS, TRUCKS, PLANES, BOATS AND HELICOPTERS**



**701-577-1032**  
Located In  
**Chaney's Total Auto**

**AREA RECOVERY GROUPS**

**MONDAYS:**  
**Noon** — AA Group Trinity Lutheran Church Ed. bldg., 214 S. Lincoln Ave, Sidney.  
**1 - 3 p.m.** — Grief Recovery Support Group in First Lutheran Church, Fellowship Room, Watford City.  
**6 p.m.** — Al-Anon, Trinity Lutheran Church Ed. bldg., 214 S. Lincoln Ave, Sidney.  
**7 p.m.** — Fairview Alive and Kicking at Fairview Alliance Church, 704 S. Western Ave.  
**8 p.m.** — AA Group, Northern Pump & Compression, Watford City. Call 770-3603 or 770-2675 for directions or ride.

**TUESDAYS:**  
**7 p.m.** — AA Group Trinity Lutheran Church Ed. bldg., 214 S. Lincoln Ave, Sidney.

**WEDNESDAYS:**  
**5:00 p.m.** — Sober Life Young People's NAAA 12- step recovery group, 25 yr. old & younger, Trinity Lutheran Church Ed. bldg., 214 S. Lincoln Ave, Sidney.  
**8 p.m.** — Al-Anon, Sanford Room, McKenzie Co. Public Library, Watford City.

**THURSDAYS:**  
**7 p.m.** — NA meeting, MonDak Trucking office Bldg., 725 W. Holly, Sidney.  
**8 p.m.** — AA Group, Northern Pump & Compression, Watford City. Call 770-3603 or 770-2675 for directions or ride.

**FRIDAYS:**  
**6:30 - 7:30 p.m.** - 5 Stones faith based recovery meeting, Sidney Nazarene, 606 9th St. SW, Back door is open.  
**7 p.m.** — **Watford City area Celebrate Recovery.** Assembly of God, 2117 S. Main. For help call Robert 417-296-2809 or Stephanie 417-296-2810.  
**8 p.m.** — AA meetings, Trinity Lutheran Church Ed. Bldg, Sidney.

**SATURDAYS:**  
**7P.M.** — AA 24 hour group, Northern Pump & Compression, Watford City. Call 770-3603 or 770-2675 for directions or ride.  
**9 a.m. & 7 p.m.** — AA Group Trinity Lutheran Church Education bldg., 214 S. Lincoln Ave, Sidney.

**SUNDAYS:**  
**7 p.m.** — AA Group Trinity Lutheran Church Ed. bldg., 214 S. Lincoln Ave, Sidney

**STATISTICS**

**LAKE WATER LEVEL REPORT**

	Sakakawea	Fort Peck
Current Elevation.....	1844.3	2232.6
Last Week's Elev. ....	1844.6	2232.5
One Year Ago .....	1833.9	2224.3
Release For Day (C.F.S.) .....	24,000	14,492

**SIDNEY WEATHER DATA**

Source: MSU Eastern Agricultural Research Center

Date	High	Low	Precip.
Sept. 22 .....	86	37	0.00
Sept. 23 .....	88	45	0.00
Sept. 24 .....	91	50	0.00
Sept. 25 .....	97	51	0.00
Sept. 26 .....	94	55	0.00
Sept. 27 .....	73	52	0.00
Sept. 28 .....	54	48	0.00
Average YTD Precipitation .....			1.24

# OBITUARIES

**Audrey Lorenz, 85, Sidney, MT**

Funeral services for Audrey Lorenz, 85, of Sidney, MT, were at 11:00 a.m., Friday, September 26, 2014 at Ebenezer Congregational Church, Sidney, MT, with Pastor David Meehan officiating. Interment of cremains will be in Sidney Cemetery, Sidney, MT., at a later date. Remembrances, condolences and pictures may be shared with the family at [www.fulkersons.com](http://www.fulkersons.com).  
Audrey died on Tuesday morning, September 23, 2014 at the Sidney Health Center Extended Care.

**Martha Swanson, 94, Sidney, MT**

Celebration of Life for Martha Swanson, 94, Sidney, MT will be at 2:00 p.m., Friday, October 3, 2014 at Zion Lutheran Church in Fairview, MT with Pastor Roberta Pierce officiating. Interment of cremains will be in Fairview Cemetery, Fairview, ND. Remembrances, condolences and pictures may be shared with the family at [www.fulkersons.com](http://www.fulkersons.com).  
Martha slipped away swiftly and painlessly in the morning hours of Sunday, September 7, 2014 at the Sidney Health Center Extended Care.

**Wilma “Kitty” Corneliusen, 76, Sidney, MT formerly of Terry, MT**

Graveside services for Wilma “Kitty” Corneliusen, 76, of Sidney, MT, formerly of Terry, MT were at 3:00 p.m., Friday, September 26, 2014 at Prairie County Cemetery in Terry, MT. Remembrances, condolences and pictures may be shared with the family at [www.fulkersons.com](http://www.fulkersons.com).  
Kitty died on Tuesday morning, September 16, 2014 at the Sidney Health Center Extended Care Facility in Sidney, MT.

## MSUB News Release: Summer 2014 Dean’s List Announced

**By Aaron Clingsmith, MSU University Relations**  
Billings undergraduate students excelled academically during the 2014 summer session and have been named to the Dean’s List.  
The Dean’s List is an honor roll of undergraduate students who earn 12 or more credits which are not of a Pass/No Pass nature and who earn a grade point average of 3.50 or better. A comprehensive list of all honorees can be found at [www.msubillings.edu/deanslist](http://www.msubillings.edu/deanslist).  
\*Asterisk (\*) = 4.00 GPA\*\*\*  
**Sidney:** Kaja Anderson, Amy Bieber\*  
**Wolf Point:** Sierra Hentges\*

## Tester: New Resources for MT Ranchers Affected by Wolves

**Submitted by Dan Malessa**  
Senator Jon Tester today announced that new resources are headed to Montana to prevent livestock loss caused by wolves.  
The funds come from a U.S. Fish and Wildlife initiative created by Tester’s bipartisan Wolf Livestock Loss Mitigation Act. The 2009 law boosts Montana’s state-run livestock loss fund, which repays Montana ranchers the full market value of animals killed by wolves and helps ranchers prevent future wolf attacks through non-lethal means.  
“Wolves are part of Montana’s landscape, but we can’t afford to have them threatening our ranching industry and the jobs that come with it,” said Tester, a member of the influential Senate Interior Appropriations Subcommittee, which oversees funding for the Fish and Wildlife Service. “I’m glad to see this collaborative bill paying dividends for Montana’s hard-working producers.”  
The state of Montana will receive \$150,000. Grants are being distributed to eight other states, including neighboring Idaho and Wyoming.  
The Fish and Wildlife initiative provides funding to states and tribes, with federal share of the cost not exceeding 50 percent.

## Walsh releases federal report on train congestion, calls for Congressional Action

**Submitted by Andrea Helling**  
Senator calls for investment in Montana’s transportation infrastructure to increase safety, ease congestion  
Senator John Walsh today released a federal report that chronicles the growth of rail traffic and its impact on local communities.  
Walsh in March commissioned the report from the Government Accounting Office (GAO). After Walsh called for the report, the GAO sent researchers across the country, including to Billings, Glendive, and Williston, ND, to assess recent rail traffic trends, particularly those patterns associated with the oil boom in the Bakken.  
The report calls for Congressional attention to federal infrastructure investments related to congestion relief as major freight lines often go through city centers and can pose a challenge to public safety.  
“This report shows we have a lot of work ahead of us to protect local communities as freight traffic increases on Montana roads and railways,” Walsh said. “That means keeping up with the pace of good jobs created in the Bakken by adopting policies to relieve freight congestion. I’m committed to working with my colleagues and willing partners in the rail industry to pass a strong, long-term highway bill that prioritizes public and private investment in rail and road infrastructure.”  
The Department of Transportation expects freight traffic to rise 51% in tonnage from 2007 to 2040, in part due to limited oil pipeline capacity.  
The GAO’s full report is available at <http://www.gao.gov/products/GAO-14-740>

# Heavy Rain Impacts 2014 Durum Crop

**By Meagan Dotson**  
According to Joyce Eckhoff, head of the MSU Eastern Agricultural Research Center, the 2014 durum crop is expected to produce a high yield but lower quality than previous years. The spring durum, Divide, was the most common variety grown this year and due to heavy moisture in April and May, many crops were planted late, if at all. It was the rain early in the season that contributed to the high yield; however rain on the already mature crop late in the season is to blame for the lower quality. Harvest was also delayed because of the precipitation in August and September.  
Durum, which is used to make pasta, is an important crop to the region because it offers variety, giving farmers an option in what they choose to grow. Durum often sells at a higher price than spring wheat which can make it appealing to farmers. Most of the durum produced in the United States is grown in north-eastern Montana and northwestern North Dakota, with North Dakota being the top producer.  
Eckhoff explains that a few years ago the price of durum was high because of limited global supply, and therefore many farmers opted to plant it. This caused a surplus and ultimately drove the price down. Because of the lower price and the wet spring, fewer crops were planted in 2014. Crops in France and Italy have also suffered because of wet conditions and this could potentially drive the price up.  
The outcome remains to be seen as one report predicted that durum that was unaffected by rain would sell in the \$8 to \$9 range. However durum that suffered the effects of the wet weather- lower test weight, discoloration and low falling numbers- would only sell in the \$6 to \$8 range. As of September 17, it was estimated that 29% of durum had been harvested in Montana and 20% in North Dakota.

## St. Matthew’s Church Fall Dinner October 19

Sunday, October 19, 2014, 11AM – 2PM. Turkey and dressing with all the trimmings including pie. Adults & Children 11-17:\$10.00 Children 10 & younger: \$5.00.  
St. Matthew’s Parish Center is located at 310 7<sup>th</sup> Street SE Sidney, MT. Please come & share a community meal.

**EVENTS**  
SEND US YOUR EVENTS!  
THE ROUNDUP: PO Box 1207  
111 West Main • Sidney, MT 59270  
406-433-3306 • Fax: 406-433-4114 • Email: [classads@esidney.com](mailto:classads@esidney.com)

**Richland County**  
Events in Sidney unless otherwise listed. MT Zone.

**Wed., Oct. 1**  
**12 p.m. - 1 p.m.** - Parents Cafe, Panini’s Pizzeria, lunch provided.

**Thurs., Oct. 2**  
**7 p.m.** - Andy Hackbarth & Wayward Tambourine at MonDak Heritage Center. Tickets available at the door.

**Fri., Oct. 3**  
**11:30 a.m.** — Sidney Senior Citizen Center will be hosting a meal. For more info call 406-433-8077.  
**2:30 p.m.** — Sidney Homecoming parade  
**6:30 p.m.** — 5 stone drug and alcohol recovery meeting, Sidney Church of Nazarene, 606 9th ST. SW, back door is open.

**Sat., Oct. 4**  
**7:30 a.m. - Noon** - Richland County Farmer’s Market. Richland County extension parking lot (1499 N Central Ave, Sidney)  
**7 p.m.** - Oktoberfest featuring Andy Hackbarth & Wayward Tambourine, MonDak Heritage Center.

**Mon., Oct. 13**  
**7 p.m.** - Candidates Forum at Girard Hall, 6 miles west of the junction of Hwy 16 & 201. Sponsored by Girard Homemakers. All local, state and national candidates have been invited.

**Sun., Oct. 19**  
**11 a.m. - 3 p.m.** - St. Matthews, Sidney, Fall Dinner.

**McKENZIE COUNTY**  
Events in Watford City unless otherwise listed. CT Zone.

**Tues., Sept. 30**  
**5 - 7 p.m** — McKenzie Co. Food Pantry open, First Lutheran Church, 212 2nd Ave. NW, Watford City. For more info call 701-444-3451.  
**7 p. m.** - Pinochle will be held in Watford City at the Senior Citizens Center every first and third Tuesdays until spring. Any further questions please call Maddline at 701-570-4394.

**Thurs., Oct. 2**  
**12 p.m. - 2 p.m.** — McKenzie Co. Food Pantry, lower level of the First Lutheran Church, 212 2nd Ave. NW, Watford City, Cash Wise food giveaway, for more info or to set up an appt. call 701-444-3451 or [www.mcfoodpantry.com](http://www.mcfoodpantry.com).  
**7 p.m.**— Pinochle, Watford City Senior Center, 205 5th St. NW, for more info call 842-3760.

**OTHER SURROUNDING COUNTIES**  
Events at the Confluence unless otherwise listed are CT Zone.

**Notice**  
MNAXLP

**View all monthly events on our calendar at:**  
**[www.roundupweb.com](http://www.roundupweb.com)**

# Andy Hackbarth & Wayward Tambourine to Perform in Sidney October 2nd



By Jill Hill, President  
Northeastern Arts Network

The Northeastern Arts Network proudly presents in concert Andy Hackbarth & Wayward Tambourine on Thursday, October 2nd. Contemporary folk ensemble with award-winning singer/songwriter Andy Hackbarth, this group creates music bearing the stamp of the contemporary West. These highly acclaimed road warriors have set themselves apart with a mix of intricately-arranged original songs, one-of-a-kind renditions of popular cover tunes and virtuosic guitar selections with an upbeat show that

continues to “wow” audiences of all ages.

Not only does Andy Hackbarth join the choice few indie artists who preserve the folk ethic of acoustic instrumentation, but he also manages to create a cohesive album while weaving together seemingly disparate musical traditions such as 19th century Spanish Romanticism, jazz standards, the classical masters and contemporary indie rock. A native of Colorado’s Rocky Mountains, Andy grew up hiking the back country alongside his family’s llamas. (They carried his guitars!) Early on, he played songs by Jim Croce and Gordon Lightfoot around the campfire but quickly made room for the works of Tarrega, Granados or whatever classical composers he happened to be studying at the Aspen Music Festival and School. Recognized as a classical guitar virtuoso in his early 20s, Andy sought to pursue new musical interests, in particular, writing his own songs. So, he relocated to Nashville, Tennessee until his songwriting was on par with his mastery of the guitar. “You don’t realize how much you have to learn until you move to Nashville,” he

says. “Truly great songs are so rare, and it’s an incredible feeling to know that you’ve written a song in which every word counts—one that forces everyone who hears it to stop, really listen, and look at the world in a completely different way.” Achieving this very effect, Treadmill Horses represents Andy Hackbarth’s fourth album and contains seven carefully selected songs whose lyrics are as poetic as the arrangements are precise and beautiful.

This concert will be held at the MonDak Heritage Center at 7:00 p.m. Season tickets can be purchased at the door: adults \$45, senior \$40, and students \$35. Tickets can also be purchased at the door. For additional concert information contact Candy Markwald 406-488-4155, Jill Hill 406-489-4304, or Karen Boehler 406-433-4375.

The Big Sky Series is made possible in part by through grant support from Montana’s Cultural Trust, Montana Arts Council, National Endowment for the Arts, the Montana Performing Arts Consortium and the Western States Arts Federation (WE-STAF).

## Parents Café Oct. 1

The Parents Café will be discussing bullying and cyber bullying on Wednesday, October 1, 2014 at Panini’s Pizzeria, 102 N. Central, Sidney 12pm to 1pm, lunch will be provided. Guest speaker Dr. Daniel Farr, Superintendent of Sidney Public Schools will be joining. For more information please contact Missy, Nicole or Vicky at 406-433-4097.

Have you ever **WONDERED...**

Where did I come from?

Where am I going?

What is my purpose?

Where will I spend eternity?

**THE BIBLE HAS THE ANSWERS**

**COMMUNITY BIBLE STUDY**  
Wednesdays at 8:00 P.M.  
Little Missouri Inn and Suites Conf Cntr  
109 9th St SE (Hwy 85 S), Watford City, ND  
701-730-5557

**Fall Open House**

**Enjoy Our Store Specials**  
**Celebrating Our 3rd Anniversary on October 8th**

**Check Out Our Fall Styles!**

**Refreshments Will Be Served!**

**Meyers Department Store**  
M-F: 10am - 6pm Sat: 10am - 5pm | 701-444-2906 • 200 N Main, Watford City, ND

**The Li'l Wrangler Youth Rodeo Series** would like to extend a big **THANK YOU** to all of our sponsors who make this rodeo a success! Your gift is very appreciated!

**Li'l Wrangler Youth Rodeo Series**

1st International Bank	M&K Hot Shot & Trucking
4 Fires Enterprises • 5 Star Foam	McKenna Forsberg Voll & Givov PC
Action Auto • Alexander School	McKenzie Electric Coop
American Casing & Equipment	Miller Insulation
American Legion Post #29 & #37	Mitchell's Oilfield Service, Inc. Wood
Anderson Refrigeration Heating & A/C	Group PSN
Astro-Chem Lab, Inc.	Nabors Drilling
Badlands Power Fuels	Northern Pump & Compression
Barrett Pharmacy & Variety	Paul Myers
Big Sky Siding & Windows	Petroleum Experience, Inc.
Cattle Ac • Cheetah Services, Inc.	Petroleum Services, Inc.
Curtis & Jennifer Sorenson	Plant Paradise Greenhouse
Dakota West Credit Union	Prairie Electric
Daren & Erin Ellingson	Prairie Petro-Chem of America LLP
David & Katie Tschetter	Prewitt & Co. LLC • Pro Auto Body
Don & Judy Maston • Donna Maston	Red River Supply
Donny Pittsley	RestorX of Montana, Inc.
Dr. Tony Fisher Orthodontist	Rick & Mindy Sigvaldsen
Ed & Connie Sundby • Equibrand	Rod & Leah Cross
Farmer's Union Insurance	Ron & Adell Pedersen
Hall Trucking • Heggen Equipment	RTC • S&K Stack Testing, Inc.
Hepper Ranch • Horizon Resources	S&S Motors • Saddle Up
Hoss Rentals, Inc.	Shawn & Kathy Mavity
J.J. & Tana Hovde	Signalness Farms • SSG
Jay & Sarah Lewis	Taylor Ag Services
Jerome Trucking	Tim & Kristin Larson
Jess Ann & Mark Knutson	Tim & Lisa Nelson • Weatherford
Judy's Mini Donuts	Wild Bison Travel Center
Leanin Pole Arena	Williston Saddlery
Leppell Welding • Lund Oil	Wise Services, Inc.

**Newest Arrival!**

**3 Bedroom, 2 Bath, 1404 Sq. Ft. Large Eat-In Kitchen With Breakfast Bar. Includes Optimal Deluxe Bathroom, Nice Sized Bedrooms, Large Utility Room, Entrance Coat Closet & Antique White-Washed Cabinets Throughout.**

**\$76,995**  
Includes Delivery Within 100 Miles, Block & Anchored

**Useman Homes**  
YOU'RE HOME, NOW.

Mon-Wed-Thurs: 9am-7pm  
Tues & Fri: 9am - 6pm • Sat: 9am - 4pm  
2308 West Front St. Williston, ND | 701-572-2590

2308 W Front St.

Free Estimates & Professional Installation

**SIDNEY PAINT & GLASS**

611 South Cenral Ave  
Sidney, MT • 482-5032

**FARM & HOME SUPPLY**

809 East Main  
Sidney, MT  
406-433-3400

**B&B SALES & SERVICE**  
SIDNEY, MT  
TRAILERS

• CARGO • FLATBED  
• UTILITY • PARTS • REPAIRS

Yamaha Golf Carts | Traeger Grills  
Cell: 406-480-7332  
Office: 406-433-1888  
34940 Hwy 23 • Sidney, MT

**SIDNEY Liquor STORE**

Open:  
Mon-Fri: 9am - 6pm  
Sat: 9am - 5pm  
The only local retail liquor store.

436 N Central • Sidney, MT  
Shops at Fox Run  
406-433-2862

**pepsi**

**BLUE ROCK PRODUCTS CO.**  
501 9th Ave NE, Sidney  
406-433-3403

**Hedahl's Auto Plus**

115 2nd Ave SE  
Sidney, MT  
406-482-3304  
1-800-962-7068



# SIDNEY EAGLES

## Homecoming Week

**Tues-Sat, Sept 30 - Oct 3**

## Homecoming Events

**Tuesday** - Pajama Day: Dress up in pajamas.  
**Wednesday** - Sports Team Day: Support your favorite sports team!  
**Thursday** - Disney Day: Dress up like your favorite Disney character.  
**Friday** - Eagle Friday: Wear Maroon & White. Football against Billings Central at 7 pm



### Sidney Royalty

**Back (L-R):** Malorie Cvancara, Tessa Dahl, Hailey Steinbeisser, Taylor Thiessen. **Front (L-R):** Brady Bell, Ethan Graves, Gresh Jones, Tyler Quilling, Logan Thiel. **Not pictured:** Kortney Mayer.



### Volleyball

**Volleyball: Coach Jennifer DiFonzo**  
**Back (L-R):** Logan Peterson, Paige Metz, Danielle Steinley, Maddison DiFonzo, Mattie Steinley, Autumn Larson, Madison Thiessen.  
**Middle (L-R):** Megan Wiggins, Lindsey Minow, Aubrey Kessel, Mateya Coffman.  
**Front (L-R):** Malorie Cvancara, Jordan Baxter, Hailey Steinbeisser. **Front laying:** Tenna Cooley.

**Gem City Motors**  
**GMC**  
EXPERIENCE THE NEW BUICK  
FIND NEW ROADS

703 S. Central • Sidney  
**406-433-3120**  
www.gemcitymotors.com

It's All About Saying Goodbye

**Fulkerson**

**Funeral Home**  
315 Second St. NW  
Sidney, MT 59270  
406-488-2805  
email: ffh@fulkersons.com  
www.fulkersons.com

**Don't Forget...**  
• Softshell Saturday  
• Taco Tuesday  
• Taco Bravo Thursday

**TACO JOHN'S**

724 S. Central Ave  
Sidney, MT  
406-433-2295

**KB's Bubbles Coin Laundry & Wash 'N Fold Service**

Mending Services  
ATM • Wi-Fi  
Open 24 Hours  
406-433-9274  
115 9th Ave. NE, Sidney  
(one block north of Farm & Home on the truck route)

**John Steinhilber JEWELERS**  
"The House of Diamonds"

116 S. Central Ave  
Sidney, MT  
406-433-2702

**ScreenPlay**  
Screen Printing & More

Mon-Thurs: 9-12 & 1-5  
Closed Friday  
2405 West Holly St.  
406-433-2400  
screenplay@midrivers.com

**PARTY CENTRAL Main Street POPCORN FACTORY**

Spirit Accessories In Burgandy, Royal Blue, Orange, Red, Black, White & Yellow!  
Hair Extensions • Hats • Ponytail Headbands • Masks • Beads • Face Makeup • Body Paint • Moustaches • Eyelashes & More!

Find Us On Facebook! | 433-4FUN(4386) • 105 E. Main, Sidney



# WOOD GROUP PSN

**WE SALUTE ALL AREA TEAMS!**

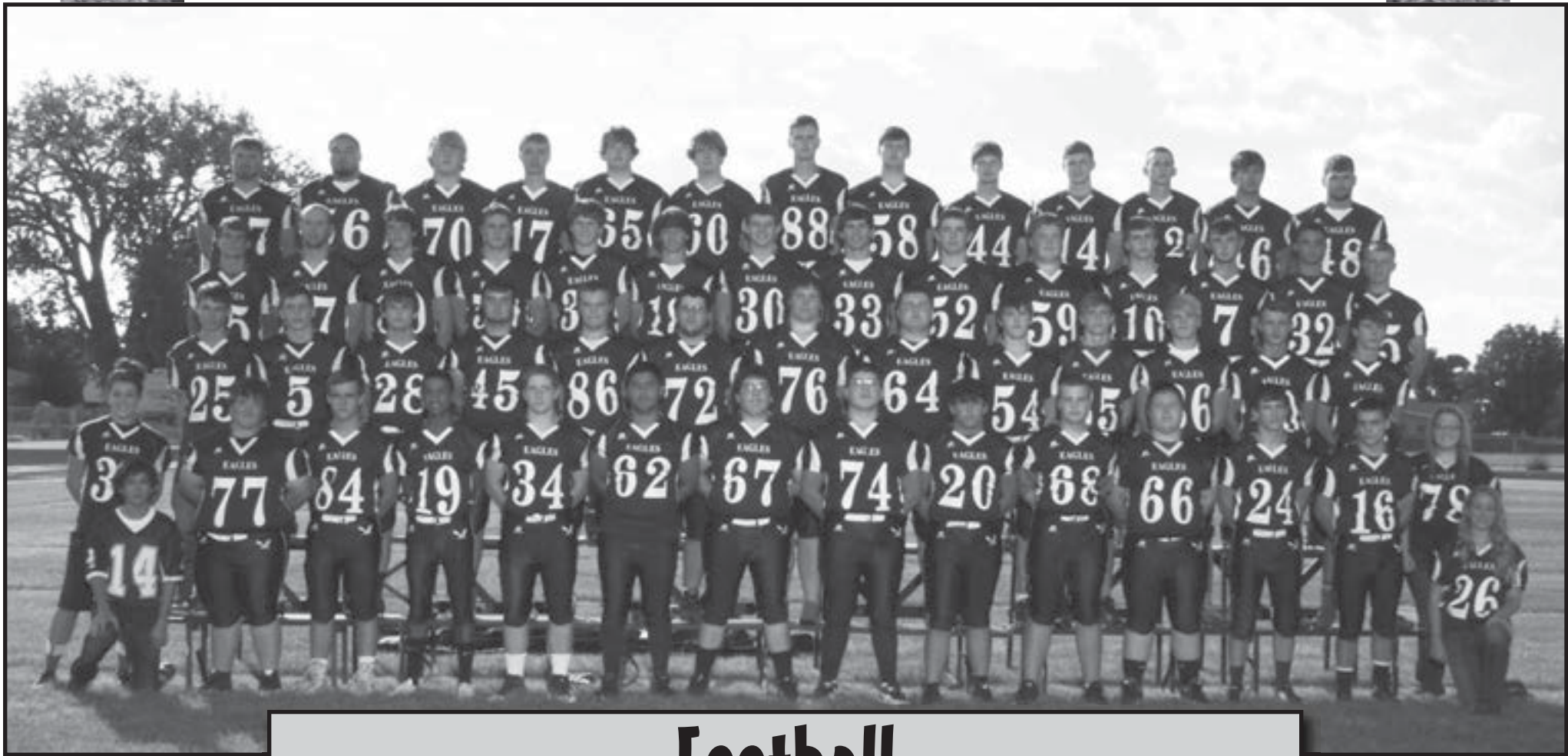
**ELKHORN**  
A WOOD GROUP COMPANY

**itchell's**  
OIL FIELD SERVICE, INC.

**SK & S**  
OILFIELD SERVICES INC.

**MEESTERS WELDING, LLC**

**One Nation Under God! • www.woodgroup-psn.com**



# Football

## ELK RIVER PRINTING

Your 1-Stop Full-Service Print Shop  
ALL COMMERCIAL PRINTING  
Full Color Marketing Materials  
Color Copies • B&W Copies  
Lamination • Specialty Papers  
Card Stock  
433-4375 • Sidney, MT

## Reynolds MARKET

1151 S. Central • Sidney, MT  
Open Daily 6am - 10pm  
Grocery 433-2305  
reynoldsmarket.com

## Good Luck!



406-480-5570  
406-433-2504

## Brorson Elementary School

406-798-3361  
12917 Cnty Rd 344  
Hwy 200

## East-Mont Enterprises Inc.

Candy • Paper Goods  
Cleaning Supplies & More!  
608 E. Main • Sidney  
Wholesale Distributors  
406-433-2910

## INTERSTATE ENGINEERING

Professionals you need,  
people you trust.  
425 East Main  
Sidney, MT  
406.433.5617  
www.interstateeng.com

## "Dig 'er Done!" GORDER TRENCHING

• Trenching for new and existing Home Waterlines  
• Your local Montana Fiberglass Stock Tank Dealers  
Specializing in Farm & Ranch Waterline and Water Tank installation  
Shane & Lisa Gorder  
482-9672  
11685 CR350 • Sidney

SIDNEY EAGLE FOOTBALL 2014											
#	PLAYER	POSITIO N	GRAD E	HEIG HT	WE IGH T	#	PLAYER	POSITIO N	GRAD E	HEIG HT	WEIGH T
5	Dawson McGlothlin	WR/DB	10	5'9"	150	48	Marcus Lovegren	RB/LB	11	6'0"	210
7	Tel Hermanson	QB/LB	11	6'0"	168	50	Garret Leland	RB/LB	10	5'10"	195
1	Quinn McGlothlin	QB/WR / CB	11	6'0"	165	52	Brenley Steinbeisser	OL/LB	10	6'0"	215
1	Trace Jones	WR/DB	10	5'9"	135	54	Hunter Nice	OL/DL	11	5'9"	165
1	Michael McGinnis	WR/DB	10	6'4"	175	56	Cristian Gomez	OL/DL	12	6'2"	290
4	Gresh Jones	QB/DB	12	5'9"	140	57	Hunter Severson	OL/LB	11	6'0"	234
1	Ethan Graves	WR/DB	12	5'5"	152	58	Dylan Patterson	OL/DL	10	6'3"	250
6	Dyllon Popescu	WR/DE	10	6'0"	155	59	Travis Rogers	OL/DL	10	5'11"	317
1	Brett Norby	QB/DB	10	6'	140	60	John Haraldson	OL/DE	12	6'3'	230
8	Ian Aldrich	WR/DB /K	10	5'10"	125	62	Juan Orozco	OL/DL	10	5'10"	225
9	Nick Larson	RB/ LB	11	5'8"	203	64	Matt Dey	OL/DL	11	5'10'	255
2	Ryan Chatterton	RB/DB	11	5'7"	150	65	James Haraldson	OL/DL	11	6'2"	222
2	Jonathan Wenzel	WR/DB	10	5'10"	130	66	Anthony Johnson	OL/DL	11	5'7"	245
2	Bridger Coffman	RB/DB	11	5'10"	160	67	Brad Renders	OL/DL	12	5'9"	235
8	Chris Gartner	RB/DE	11	6'0"	182	68	Justin Candee	OL/DL	10	5'8"	186
3	Parker Dean	RB/LB	10	5'10"	154	70	Nathan Anderson	OL/DL	12	6'3"	254
2	Logan Thiel	RB/DB	12	6'	175	74	Diego Chaidez	OL/DL	10	5'10"	220
3	Steven Adams	RB/LB	10	5'8"	185	75	Casey Christensen	OL/DL	11	5'7"	160
3	Cody Johnson	WR/DB /K	12	5'10"	174	76	Tristin Fahnnow	OL/DL	11	6'2"	299
6	Mason Thiel	WR/DB	11	6'0"	161	77	Kolton Nevins	OL/DL	11	5'5"	255
8	Nate Wick	WR/DB	10	5'10"	148	80	Tyler Quilling	WR/DB	12	6'0"	153
4	John Beyer	OL/DE	10	6'0"	164	84	Chris Wick	WR/DB	11	5'7"	159
2	Kory Halvorson	TE/DE	12	6'2"	205	85	Jared Steinbeisser	OL/DE	10	5'10"	147
4	Trent Schilling	RB/LB	11	5'10	212	86	Jace Benson	TE/LB	10	5'11"	164
4	Kyle Mueller	TE/LB	11	6'0"	195	88	Cy Hintz	WR/DB	11	6'5"	160
6	Larren Foust	RB/DE	11	5'11"	180						
4											
7											

**Head Coach:** Roger Merritt  
**Assistant Coaches:** Guy Melby, Steve O'Toole, Chad Quilling, Ron Winegar, Carl Dynnesen

## Sidney Body Shop



- Collision Repair
- Glass Replacement

Owners: Kirby & Kelly Feldman  
406-433-2948  
1301 S Central Ave • Sidney

## GOOD LUCK SIDNEY EAGLE FOOTBALL!

## Jones Construction Service Inc.

406-433-2987  
Proud parents & grandparents of Gresh & Trace Jones



Call your local agent  
**Cathy Hintz**  
406-488-8326  
2405 W. Holly St. • Sidney

## REAL ESTATE IS OUR BUSINESS!

406-482-4480 • 1-888-482-4480  
Fax: 406-482-5836  
120 2nd Ave. SW • Sidney, MT  
Mon-Fri: 9am - 5pm  
Sat & Sun By Appointment  
beagleproperties.com



## ACTION AUTO



406-433-2312  
1-800-788-2312  
220 E Main  
Sidney, MT

## INTERSTATE ENGINEERING

Professionals you need,  
people you trust.  
425 East Main  
Sidney, MT  
406.433.5617  
www.interstateeng.com

## Eagle Country Ford

Experience the Eagle Country Difference!  
Mon-Fri: 8am - 5pm  
Sat: 9am - 1pm  
215 East Main St • Sidney  
1(800)482-1810 • 433-1810

## HURLEY'S OILFIELD SERVICES

- Potable Water • Sewer System
  - Loaders • Communications
  - Backhoe • Trucking
  - Skid Houses • Porta Potties
- Dispatch: 701-844-1234  
Fairview, MT



406-433-6754  
Fax: 406-433-6755  
2265 S. Central Ave • Sidney  
les@slservices.net  
www.slserviceinc.com



Mon-Sat: 9am - 6pm  
Shops at Fox Run  
Sidney, MT  
406-433-1800



Think of the Possibilities  
Sidney, MT • 482-4401

## "Dig 'er Done!" GORDER TRENCHING

• Trenching for new and existing Home Waterlines  
• Your local Montana Fiberglass Stock Tank Dealers  
Specializing in Farm & Ranch Waterline and Water Tank installation  
Shane & Lisa Gorder  
482-9672  
11685 CR350 • Sidney

## FRONTIER Heating • Refrigeration • Air Conditioning

SIDNEY, MT  
488-4657  
Sales • Service • Installation  
TRANE

## B&J Heating, Inc. Heating - A/C - Refrigeration

"Relax, It's Rheem."  
406-482-4744  
607 2nd St SE  
Sidney, MT  
24 Hour Service



616 S. Central  
Sidney, MT  
406-433-7827  
Open 10am Daily

## APPETIZER SPECIALS DURING FOOTBALL ON SUN, MON & THURS

Our Prime Rib is roasted nightly – Always with our Soup & Salad Bar



Restaurant,  
Lounge & Casino  
207 2nd Ave. NW • Sidney, MT  
(406) 433-4999 or 433-4338

REESE & RAY'S

IGA

203 2nd St. NW • Sidney  
406-482-3737



Sidney Sugars

INCORPORATED

- Quality
- Everyday Low Prices
- Courteous Full Service

Chad's Furniture

SIDNEY, MONTANA

302 East Main  
Sidney, MT  
406-433-1005



CHMS, P.C.

CERTIFIED PUBLIC ACCOUNTANTS

Audits, Estate Planning, Business Consulting, Estate Tax, Income Tax

PO Box 1067  
104 Second Avenue SW  
Sidney, MT  
406-433-2092  
Fax: 406-433-2095



(406) 488-8706  
David Williams  
Cell (406) 489-8706  
Scott Ramus  
Cell (406) 489-8707  
1511 S Central Ave • Sidney



Office: 406-433-6757  
Cell: 406-697-7153  
Fax: 406-433-6755  
2221 S. Central Ave • Sidney  
www.sondassolutions.com

*"Customers are the jewels in our crown"*



406-433-7222  
222 S. Central, Sidney



Olson Plumbing & Heating

A family business protecting and improving your family home.

PO Box 375 • Sidney, MT  
482-4027


Melby Construction

Gutters • Fascia • Soffit • Siding • Shingles

A family business protecting and improving your family home.

Creative Curbing

Guy Melby Phone: 1-406-488-6624



Cheerleaders

**Roster:** Madelynn Brazeal, Mateya Coffman, Tessa Dahl, Tayler Fischer, Tayler Lange, Autumn Larson, Brianna Reid, Emily Swenson, Taylor Thiessen, Amanda Valnes, Chantel Wilcoxon, Katlyn Winter.



Golf

**Coaches** Jay Frank and Benji Berg.  
**Back (L-R):** Tierney Messner, Camden Berka, Peyton Beyerle, Brady Johnson, Christian Seitz, Holly Papineau.  
**Middle row (L-R):** Chase Morehouse, Luke Beenken, Andrew Hansen, Ben Broadhead.  
**Front (L-R):** Shaelyn Bowlds, Kaelyn Volk, Troy Pugh, Kortney Mayer, Torey Dahl.



Cross Country

**Coach** Jay Borseth  
**Back (L-R):** Scottlynn Anglesey, Skyler Tibbits, Zach Sommerfeld, Sean Lofthus, Blaine Nelson, Christina Anglesey, Tucker Heller.  
**Middle row (L-R):** Tess Ler, Janelle Brein, Brianna Lunderby, Johren Carpenter, Abby Reitz, Tessa Hill, Patrik Prince.  
**Front (L-R):** Everett Jensen, Will Steinbeisser, Kursti Wray, Jade Hennig.

THE DEPOT

Casino

POKER KENO

HAS PIZZAZZ

PIZZA & FINE FOODS

• WE DELIVER •

Hwy. 16 S, Sidney, MT • 406-433-4650




2429 W. Holly St.  
406-488-4400



FINK DENTAL CENTER

122 2nd Avenue S.E.  
Sidney, MT 59270  
406-433-4422



BUTLER & CHIEF STEEL BUILDINGS

Jim Bell | General Manager  
Cell: 406-480-7249  
Office: 406-433-1888  
Fax: 406-433-1889  
34940 Hwy 23 • Sidney, MT

www.richlandfcu.com



Sidney & Roosevelt County  
Office In Culbertson



Tile • Furniture  
Lighting • More!

Mon-Sat: 10am - 6:30pm  
Sun: 1pm - 5pm  
1051 S Central Ave • Sidney, MT  
406-433-9898  
Fax: 406-433-9896  
TriFectaHomeCenter@live.com



• Electrical Supplies & Equipment  
• Decorative Lighting  
• Electrical Service



Hair Tanning  
Nails Pedicures  
Jewelry & Accessories

406-488-1795  
109 4th St. SE • Sidney



SEITZ INSURANCE AGENCY

114 2nd Ave SE  
Sidney, MT  
406-433-1411

Rau Elementary School

406-482-1088  
12138 Cnty Rd 350  
Sidney, MT



804 S. Central Ave • 406-433-4636

WINGS & MUNCHERS FOLLOWING THE HOMECOMING GAME!

Meatball Subs Are Saturday's Specials For College Football!



We've Got NFL Sunday Ticket So You Won't Miss Your Favorite Game!

# October is Domestic Violence Awareness Month

By Lesley Thiessen, RN  
Richland County Family Planning

The topic of domestic violence has sprung to the forefront of American pop culture in recent weeks as a result of the Ray Rice video. Unfortunately, when the outrage of the American public fades and the public service announcements stop, 25% of all women will still experience domestic violence in their lifetime (CDC). Because 74% of all Americans personally know someone who is or has been a victim of domestic violence, we are obviously whispering about it (Allstate Foundation National Poll on Domestic Violence, 2006). We need to do more than whisper. We need to see domestic violence for what it is – violence....and it is NEVER okay.

Humans tend to gravitate to what is familiar – even if that familiarity is abuse. We have a responsibility to each generation to teach our young men and young women what a healthy relationship looks like. Anger should be discussed, and not expressed with violent words or actions. Unfortunately, 50% of men who frequently assault their wives also frequently abuse their children (evefoundation.org). Furthermore, studies suggest that between 3.3 and 10 million children witness some form of domestic violence annually (evenfoundation.org). These statistics are startling and it could be argued that up to 10 million children are being set up to become either victims or perpetrators of domestic violence.

Domestic violence is a cycle we can break.

Domestic violence tends to be a silent crime. Only about 55% of all incidents of domestic violence are reported (CDC). It's a crime of shame and guilt. Men and women who are victims of domestic violence are embarrassed and ashamed by their abuse. They protect their abuser and blame themselves for causing the abuse. The abuser is often extremely remorseful and promises to never do it again – until the next time. Unfortunately, more than 3 women and 1 man are “loved to death” by their intimate partners in this country every day (Bureau of Justice Statistics). Abuse is NEVER about love. Abuse is about power and control.

As the football season wears on and we get caught up with the hype of tailgating, team rivalries and office pools, let's not forget that for one moment as a nation of fans and athletes, regardless of color or tax bracket, we came together and said collectively, “WE WILL NOT TOLERATE VIOLENCE IN OUR HOUSE!”

If you or someone you know is the victim of domestic violence or for more information call Lesley at 433-2207 at Richland County Family Planning, The Domestic Abuse Hotline at 1-800-799-SAFE (7233) or go to the website www.thehotline.org .

It's time to be silent no more.

# MBCC Receives \$187,518 for the State Justice Statistics Program

By Tyson McLean

The Montana Statistical Analysis Center (SAC) at the Montana Board of Crime Control has received a \$187,518 grant from the U.S. Department of Justice Bureau of Justice Statistics. The grant will support research for two projects. One will continue to build on the state's 2010 crime victimization survey in order to better understand victimization trends while also focusing on victimization related to the increasing oil development in Northeastern Montana. The proposed study will provide much needed data on the current state facilities and services that are available to crime victims in Montana. The study will also provide data on drug-related crime victimization and public perceptions of fear of drug related crime. This data will also provide an opportunity to analyze Montana's Incident-Based data (compatible with the National Incident-Based Reporting System) to estimate how many more crimes occur that go unreported to law enforcement.

The second project will enhance and expand on work previously done in Montana regarding the management of jail populations in the state and the collection of data from/about that population. The development of a systematic data collection process will facilitate state and Federal level reporting requirements for data that are difficult to manage

at the present time.

The project will be completed as a partnership between Tyson McLean, M.A., Montana Statistical Analysis Center Director and The University of Montana Criminology researchers, Dusten Hollist, Ph.D, Associate Professor of Sociology, Jackson Bunch, Ph.D., Assistant Professor of Sociology, and Patrick McKay, M.A., Research Associate and Adjunct Professor at The University of Montana.

The Montana Board of Crime Control is the designated state agency that annually administers millions of grant dollars dedicated to preventing crime and making justice system improvements statewide. The 18-member board, appointed by Governor Steve Bullock, represents law enforcement, criminal and juvenile justice system stakeholders, tribal communities and citizens. Board members provide critical leadership, oversight and accountability of systems charged with promoting justice and public safety.

# Montana Candidates Forums Slated for October In Sidney

Submitted by LaVanchie Starkey

The Sidney Area Chamber of Commerce and Agriculture and the Richland County Farm Bureau invite Richland County residents to the Candidates Forum scheduled for 6:00 p.m. on October 23rd. It will be held at the MSU Extension conference room north of Sidney on Highway 200.

Invited locally are candidates for Richland County Sheriff, Richland County District Court Judge and House Districts 36 and 37. Each candidate has the opportunity to provide a short prepared message, followed by questions submitted by the audience. This is an excellent opportunity to discover how the candidates stand on local issues.

We are also excited to announce two debates scheduled in October.

Candidates for U.S. Senate, Montana House of Representatives Amanda Curtis and U.S. Representative Steve Daines have been invited to a debate on October 21<sup>st</sup>, both parties have accepted and will be present. The debate will be held at the Richland County Fair Event Center at 7:00 p.m. Questions from the audience will be submitted to a moderator and read to the candidates.

Candidates for U.S. House of Representatives, former State Senator Ryan Zinke and John Lewis, have been invited to a debate scheduled for October 20<sup>th</sup>, Zinke's campaign has confirmed. Again, the event will be held at the Richland County Fair Event Center at 7:00 p.m.

Both offer a prime opportunity to learn how each candidate will represent Eastern Montana in the U.S. Senate as well as in the U.S. Congress. Each U.S. candidate forum will also be carried live via radio and television.

Watch for further details to be released.

## We Are NOT Closing!

Accepting 0-12 Year Olds  
Before & After School  
Open Mon-Fri: 5:45am - 5:30pm



### Small World Daycare

623 N Central • Sidney, MT | 406-488-7337

## Super Saving Sale

Modulars starting at \$60 per sq. ft.



LOCK IN SALE PRICE, TAKE DELIVERY LATER!

• WOW!! Triplewide 2790 sq. ft. with all the bells & whistles.

SAVE \$1000's

• 1600 sq. ft. modular, 3 bedroom, 2 bath, 6" walls, glamour bath, low-e windows, upgraded cabinets. **ONLY \$103,900**

### NEW HOMES of the FUTURE

406-248-1100  
www.newhomesofthefuture.com

7239 South Frontage Rd., Billings, Montana 59101

## New Homes Available!

Serving the region for 90 years!

- Providing full service construction including site work.
- 2, 3 & 4 bedroom models available.
- Garages, driveways, sidewalks, & patios.
- Attic & basement models available.
- Land/home packages available in Williston.

**For more information on our premium quality homes, give us a call today!**

ND Sales 701-847-7047

MT Sales 888-710-0642



### PIERCE HOMES

piercehome.com

## Sidney Adult Education Classes Fall Quarter 2014

Adult Education Classes for Fall 2014

Please call Sidney High School (433-2330) to register or for more information.

**Mondays, Starting October 6<sup>th</sup>**  
**Latin Dance - Instructor: Kristin Norgaard (480-2746)**

Location	Room	Time	Fee
SHS	SHS Commons	5:30 - 6:30pm	\$20

**Tuesdays, Starting September 30<sup>th</sup>**  
**Beading Class - Instructor: Dianne Etzel (488-6487)**

Location	Room	Time	Fee
SHS	SHS Commons	6 - 9pm	\$20

**Wednesdays, Starting September 24<sup>th</sup>**  
**Men's Volleyball - Instructor: Dennis Marker**

Location	Room	Time	Fee
SHS	SHS Gym	7 - 9pm	\$20

**Wednesdays, Starting October 1<sup>st</sup>**  
**Tall Trim the Tree - Instructor: Deb Bradley (482-3366)**

Location	Room	Time	Fee
Quilts & More	NA	10am	\$20

**Thursdays, Starting September 18<sup>th</sup>**  
**Culinary Education - Instructor: Diane Savage**

Location	Room	Time	Fee
SHS	106	5pm	\$30

**Thursdays, Starting October 2<sup>nd</sup>**  
**Rag Time Quilt - Instructor: Deb Bradley (482-3366)**

Location	Room	Time	Fee
Quilts & More	NA	5:30pm	\$20

**Saturdays, Starting October 4<sup>th</sup>**  
**Stack & Wack Quilt - Instructor: Sarah McMillen**

Location	Room	Time	Fee
Quilts & More	NA	10am	\$20

Anyone interested in teaching a class may contact Sidney High School. Check the Sidney Public School website for more information (click on "Resources"):

**http://sidney.k12.mt.us**



## Fall Seasonal Coffee

Limited Time!

### PANACHE

YOUR NEIGHBORHOOD'S BEST COFFEE

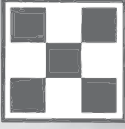
- Pumpkin Spice
- S'mores
- Jack Frost
- Holiday Roast



**Join Our Loyalty Program**  
**Buy 10lbs of coffee, get the 11th FREE**


Sales Associate Position Open! Call For Details.

Open Mon - Sat: 9am - 6pm  
224 Main Street • Williston, ND  
701-572-COOK (2665) • (F) 701-572-2666




**More Than Just  
A Feed Store...**

Purina Mills



**Purina,  
Hubbard, Pet Food,  
Gifts, Ropes & Tack**

**J & S Feeds**  
Glendive, MT



*"If you need it &  
we don't have it...  
...we'll do our  
best to get it!"*

1000 N Merrill • Glendive, MT | Mon-Fri: 8am - 5pm • Sat: 8am - Noon  
jsfeeds@midrivers.com | (P): 1-406-377-2180 • (F): 1-406-377-2181

# MAKE-A-WISH®

## Help Wishes Fly Into Fall

### Make-A-Wish® Seeking Air Miles

**By Stevie Moe**

Now that fall is officially here, frequent fliers with air miles from Delta, U.S. Airways and United are urged to donate their unused air miles from summer travel to Make-A-Wish. Those miles are turned into free flights for wish kids battling life-threatening medical conditions, and once donated, they never expire. Did you know?: 75% of wishes involve travel? There are an estimated 16 trillion frequent flier miles that go unused? The number of miles an individual can donate can range from a few thousand miles to millions?

To donate miles or for more information, call us at (877) 574-9474 or log onto [montana.wish.org](http://montana.wish.org). Make-A-Wish® Montana is a non-profit organization that grants wishes to children with life-threatening medical conditions to enrich the human experience with hope, strength and joy. The Foundation serves all 56 counties in Montana and granted its first wish in 1987. Since then, more than 400 wishes have come true with the help of more than 60 volunteers. For more information on how to refer children or to volunteer, please call Make-A-Wish at 1-877-574-9474 or visit its Web site at [montana.wish.org](http://montana.wish.org)



**We have land for  
Singlewides in  
Watford City!!!!**

**Don't wait, they  
will not last long.**

**Homes Starting  
at \$29,900**

**Watford City Homes**  
704-913-8338  
1504 4th Ave NE Watford City, ND 58854  
[www.HerDreamHome.com](http://www.HerDreamHome.com)  
Next to McKenzie Building Center

- Singlewide Homes.
- Work Force Housing.
- Modular Homes.
- Financing Specialists.
- Manufactured Homes.
- Land Available.
- Low Down Payments



## I Love WISHES

### Public Invited to Comment on Proposed Allocation Plan

**HURLEY'S OILFIELD SERVICES**

- Potable Water • Sewer System
- Loaders • Communications
- Backhoe • Trucking
- Skid Houses • Porta Potties

**406-742-5312**  
**Fairview, MT**

**NEU CONSTRUCTION, INC.**

- Oil Field Roads & Locations
- Reclaim Work
- Gravel & Scoria Hauling

**Fairview, MT**  
**406-742-5549**

**LONG X BOTTLE SHOP**

**Drive Thru**  
Mon-Sat: 10am-8pm  
Sun: 1-4:30pm

**Walk In**  
Mon-Sat: 8am-9pm  
Sun: 1-5pm

**Hwy. 85 Watford City**  
**701-444-3335**  
(Located in the Long X Visitor Center)

## Sports Booster WEEKLY SCHEDULE

### Volleyball

**Thurs. Oct 2**  
MonDak at Culbertson V/JV, 4 pm  
Froid/Lake V/JV/JH at Plentywood, 5:30 pm  
Parshall at Watford City V/JV, 7/6 pm

**Fri. Oct 3**  
Fairview at Bainville, TBA  
R&L V/JV/JH at Froid, 4 pm

**Sat. Oct 4**  
Fairview at R&L Invite, TBA  
Sidney JV1 at Dickinson Tourney, TBA  
Bainville at Lambert Invite, TBA  
R&L Varsity at Lambert Invite, TBA  
Culbertson Varsity at Lambert Invite, TBA  
Brockton V/JH at Opheim, 1 pm

**Mon. Oct 6**  
Williston at Sidney JV1/JV2/V, 4/5:30/7 pm  
Trinity Christian at Watford City V/JV, 7/6 pm

**Tues. Oct 7**  
Sidney JV1/Jv2/V at Glendive, 4:15/5:45/7:30 pm  
Hays/Lodgepole at Brockton Varsity, 5 pm  
Froid/Lake V/JV/JH at Grenora, 4 pm

### Cross Country

**Sat. Oct 4**  
Savage at Frazer, 2 pm  
Fairview Varsity Hays/Lodgepole, 1 pm  
Plentywood at Fairview JH, 10 am  
Glasgow at Sidney JV1/JV2, 2 pm  
Froid/Lake Varsity at Med Lake, 1 pm  
Froid/Lake JV at Terry, 1 pm

**Mon. Oct 6**  
Broadus at Fairview JV, 5:30 pm  
R&L JH at Savage, 4 pm  
Culbertson JV at Wibaux, 4:30 pm  
Watford City JV at Dickinson Trinity High, 5 pm

**Tues. Oct 7**  
Froid/Lake JV at Frazer, 4 pm

### Golf

**Fri & Sat. Oct 3 & 4**  
Sidney at Hamilton State, TBA

### Football

**Fri. Oct 3**  
Billings Central at Sidney, 7 pm  
Wibaux at Bainville, TBA  
R&L V/JH at Grenora, 7/4 pm  
Wibaux at Culbertson V/JH, 7/4 pm  
Bismarck St. Mary's at Watford City Varsity, 7 pm

### Support Your Favorite Team!

Be Sure To Thank The Sports Booster  
Schedule Sponsors On This Page



**Family Dining!**

**Fairview**  
**406-742-5180**

Open at 4:30pm Turs-Fri  
2pm Sat & Sun



**Farmer's Union Oil Co.**

501 6th Ave SE • Watford City  
701-444-3639



**Smarter. Better. Faster.**

**www.RTC.coop**

Phone • Internet • TV

**By Sarah Mudder, Communications Coordinator**  
**North Dakota Housing Finance Agency**

The North Dakota Housing Finance Agency (NDHFA) is inviting the public to comment on proposed changes to the State's Low Income Housing Tax Credit Program 2015 Qualified Allocation Plan during a public hearing to be held at 10:00 a.m. on Nov. 3, 2014, at NDHFA's Bismarck office, 2624 Vermont Ave.

Persons needing accommodation to attend the hearing should call (800) 292-8621 or (800) 366-6888 (TTY) by Oct. 30, 2014.

The Industrial Commission of North Dakota, consisting of Governor Jack Dalrymple, who serves as chairman, Agriculture Commissioner Doug Goehring and Attorney General Wayne Stenehjem, oversees the NDHFA.

**HIGH PLAINS AUCTION & APPRAISAL CONDUCTING THE**

**~ MERLE MEIERS ~**

## ESTATE AUCTION

**SATURDAY, OCTOBER 11, 2014 • 11:00 AM**  
**4734 - 119th Rd. NW, Epping, ND (Long Creek Cottage Sites)**  
**For Information - Call Nick Voller at 701-859-9774**



**VEHICLE • SHOP • TOOLS • MISC.**

- 1998 Dodge Dakota, 2WD, app. 51,000 miles (very good condition)
- Ladders - 3 extension & 3 step ladders
- Air compressor & portable air tank
- Hydraulic jacks
- Grease gun
- Tap & die set
- Shop vacuum
- (2) Electric winches, 400 LB, 12V and 120V
- Harmonic puller
- Work light
- Assorted carpenter's hand tools - saws, levels (one laser), saw horses, miter clamps, tile cutter
- Assorted mechanics hand tools - hammers, pliers, vise grips, socket sets, drill bits, wrenches
- Motion lights and smoke detectors
- Porta pump - 1450 gallons per hour
- Appliance mover
- Trailer hitch
- Impact driver
- Extension cords
- Propane torch; propane portable grill



**LAWN • GARDEN**

- Huskee lawn tractor w/ mower deck
- Utility trailer, 4x7
- Snow blowers, including a Honda snowblower
- Fertilizer spreader
- Thatcher rake
- Tank sprayers and hand sprayers
- Poulan grass trimmer, gas operated & electric grass trimmer
- Leaf bag holder
- Branch trimmers, electric and manual
- Craftsman lawn sweeper
- Electric chain saw



**DIE CAST COLLECTIBLES**

- Maisto 2002 Ford Thunderbird
- Maisto 1956 Ford Thunderbird
- Franklin Mint Rolls Royce Silver Ghost



**HOUSEHOLD • COLLECTIBLE ANTIQUES • INTERESTING**

- Antique Stereoscope viewer w/ pictures (excellent condition)
- Old clocks
- Old radios, table top and console
- Kerosene lamps
- Coca Cola "Drive In" clock
- Centennial belt buckles
- Grandfather clock and movements
- Train set
- Assorted hub caps
- Yard windmill (very nice)
- Assorted pictures, prints and picture frames
- (2) Curio cabinets
- Entertainment center, 3 books cases, file cabinet
- Metal shelf unit (3 shelves)
- Kitchen and bathroom tiles
- Upright freezer
- Woven rugs & floor mats
- Rocking chair and side chair
- Panasonic window air conditioner
- Stereo equipment, tapes, cassette players, speakers, DVD and VCR
- Vacuum cleaners
- Little Red wooden wagon
- Gardener's stool/car



**POWER TOOLS**

- Battery chargers
- (4) Circular saws
- Router and router table
- Power washer
- 6" Polishing sander & belt sander
- Compound miter saw
- (4) Electric drills
- Hammer drill; bench grinder w/ stand
- Tile saw
- 9" Tilling Arbor table saw



**GUEST CONSIGNORS**  
**REUBEN HILLSTAD & DAVE BREVIK**

- Huskee lawn tractor, 18.5 HP
- Snow blower, 5 HP
- (2) Sets of lawn/patio furniture

**HIGH PLAINS AUCTION**

Williston • Bottineau

**We Sell - We Clerk - We Advertise**  
WILLISTON, NORTH DAKOTA

Statements made sale day by Auctioneers take precedence over all previous printed materials.  
**TERMS:** Cash or Check. Identification Required. All Sales Final. Everything sold "As is, Where is." Not Responsible for Accidents.

**Lee Halvorson**  
#549  
Williston, ND  
(701) 774-2923  
[auctioneer@highplainsauction.com](mailto:auctioneer@highplainsauction.com)  
[www.farmersunionoilco.com/highplains](http://www.farmersunionoilco.com/highplains)

**Terry Moe**  
#1012  
Watford City, ND  
(701) 580-2426

High Plains Clerking #398  
Auction Call: 570-3073

**Jim Borseth**  
#868  
Williston, ND  
(701) 572-5480

**AMERICAN SOCIETY OF PROFESSIONAL AUCTIONEERS**

**LUNCH WILL BE SERVED**

# Fall Landscaping & Lawn Care

By Tim Fine  
MSU Extension Agent

Recent weather fluctuations have driven home the point for me that fall is definitely upon us which means that winter and those dreaded four-letter words, cold and snow, are soon to follow. However, we can hope that those two things are still more than a few weeks away and enjoy what is left of the fall season. One way to do just that is to start preparing for next spring in the yard and garden. To help you get a head-start, here are a couple of tips for fall garden maintenance and clean-up.

In the vegetable garden- fall is a great time to add some amendments. After your vegetables have finished producing, it is time to put the garden to bed for the winter. If your plants are not diseased, feel free to leave them on the surface of the garden and till them in. Or, you may choose to pull them up and add them to the compost pile, either option is perfectly acceptable. If you have access to some well-composted manure or have a compost pile of your own, you may consider adding some to the garden prior to doing your tillage. Or, you may choose to just add the compost and let it sit without doing any tillage. That is o.k. too but you will definitely want to till it in next spring. Another option that can help add amendments to garden soil is to start a "green manure" crop this fall. Planting something like winter rye, oats, or legumes like peas will not only help retain topsoil, but in the case of the legumes, can add nitrogen to your soil. The one drawback with the green manures is that, you have to incorporate them into the soil next spring and there is always the chance that they may re-grow and end up being weeds the following season.

In the lawn-The two best things that can be done this time of year to help your lawn survive the winter and be ready to grow next spring are fertilization and aeration. Not necessarily in that order. Fall fertilization with a slow-release nitrogen product will help to encourage root growth this fall so that next spring when it warms up, the grass will be ready to go. Aerating a lawn helps combat issues like compaction and allows for more air to get down to the root zone. Oxygen is one of the most important elements that roots need to thrive. A good, deep watering of the root zone never hurts either. And when you are ready to make that final mowing, you might want to consider actually lowering the mowing height from what you normally mow the lawn at. This is not to suggest that scalping the lawn is a good thing but if there is not as much re-growth before the snow falls, there is less chance for the development of snow mold next spring.

In landscape beds-As flowers start to fade, it is a good idea to start to trim back spindly stalks, get rid of dead flowers, and prune out any diseased or damaged flowering plants and shrub and tree branches. If you have some more tender plants, like roses for example, you may want to consider cutting them back to a manageable size and mulching over them to protect them over the winter. As a matter of fact, applying a fresh layer of mulch before the ground freezes helps not only to conserve soil moisture, but it also alleviates some of the issues associated with fluctuations in soil temperature.

Trees-As mentioned above, pruning can be done in the fall. Really, you should wait until the trees are dormant (have lost all of their leaves) so most people wait until early spring, when the temperatures are a little more conducive to being outside, but if there are a few nice days and the trees have reached dormancy, there is nothing saying that you have to wait. Probably of more importance, and especially for evergreen trees, is to give the root zone a really good deep soaking of water. This helps prevent desiccation over the

winter as winds and direct sunlight tend to zap moisture out of the trees. This deep watering should be held off until after the trees have gone dormant, so waiting until after leaves have fallen off of deciduous trees but before the ground freezes is a good practice. The cold, windy winter that we experienced in 2013 and early 2014 was not very kind to trees and landscape plants. Those factors coupled with a lack of snow cover caused many trees to die or severely delay leafing out. Then, this spring was wet and cold which created a perfect environment for many diseases to establish themselves in our landscape. Anything that you can do to help your tree(s) make it through the winter will be of great benefit next spring. Especially if this winter and next spring are similar to last year's. It's probably a good idea to wait until next spring to fertilize trees as well. Fertilizing now may actually encourage growth and not allow trees to properly "harden off" before winter.

Most people think of fall as a time to reap what you sew, sit back and wait for next spring to come; which is a perfectly acceptable practice as well. However, doing a few of these things may make next spring's chores a little bit easier. One thing that I should point out is that, when doing pruning, clipping, cutting etc... it is perfectly fine to add these clippings to a compost pile. However, if you are rouging out diseased branches and plants, they should be thrown in the garbage or burned. Many of our plant diseases are capable of over-wintering on plant material and unless the compost pile is closely monitored, it does not usually get warm enough to kill them.

As always, if you have any questions about the tips mentioned above, or if you want more detail about the whats and whys of the suggestions mentioned, feel free to give me a call at 433-1206 or send an email to timothy.fine@montana.edu.



## YOUR COMPANY LOGO CUSTOM EMBROIDERED ON ANYTHING...

**Hats, Shirts, Sweatshirts,  
Jackets & More!**

**FR or Not, it's your choice!**



As always, we have all your FR clothing

www.sondassolutions.com

M-F: 6am - 6pm • Sat: 8am - 5pm | 2221 S. Central, Sidney | 406-433-6757

## 4<sup>TH</sup> ANNUAL DART TOURNAMENT

Sponsored by Hi-Way Lounge

**Saturday, October 4<sup>th</sup>**

**Registration: 12pm • Starts at 2pm**

**1st 128 people to pre-register**

**More  
Added  
Cash  
For  
Prizes!**



**Cash Prizes  
Gifts • Dart Sets**

**Hi-Way Lounge & Grill**

**Main Street • Alexander, ND | 701-828-3100**

## HUNTING SEASON IS IN SIGHT

**Purchase Your Optics Now**

**To Get Your Rifle Ready For Hunting Season!**

**FREE MOUNT & BORE SIGHT!**

WITH PURCHASE OF A NEW SCOPE



NEW!  
**HUSKEMAW**  
LONG RANGE OPTICS

**ALL YOUR  
FAVORITE  
BRANDS!**

NEW!  
**SWAROVSKI**  
OPTIK

**NOW SELLING HUNTING BOOTS & APPAREL**



Mon-Sat: 9am - 6pm

406-433-1800

**Shops at Fox Run**

**440 N Central Ave • Sidney, MT**

# CUSTOM HOMES ON YOUR LAND

## MODULAR HOMES FROM EXCAVATION TO COMPLETION

Licensed General Contractor Rus Inc. – We travel to ND, MT, SD & WY

**OPEN HOUSE  
OCT. 4 & 5**



**SPECIAL PRICE  
\$183,900**

**1,387 Sq. Ft. – 3 Bedroom, 2 Bath**

- Includes Unit
- Includes Concrete Basement
- Includes Excavation, Digout & Back Fill
- Includes Set & Finish
- Includes Delivery
- Includes Basement Stairs
- Includes Kitchen Appliances Per Plan
- Includes Inside Plumbing

**Excavation to Completion  
Home Plans**

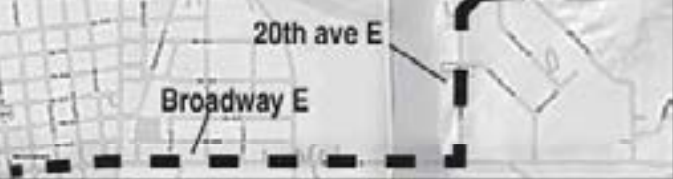
**– SAVE –**

Let us do all the work from Excavation to Completion.  
We will bid your favorite plan with no cost to you!

**MODEL HOME OPEN HOUSE  
SAT, OCT 4TH & SUN, OCT 5TH  
12:00 PM - 4:00 PM**

- Take Broadway E over river
- N. on 20th ave E
- Right on 11th St. E
- North On 134th Ave NW

★5231 134th Ave NW, Williston



**OPEN HOUSE  
OCT. 4 & 5**



**Add Garage  
or Basement to  
any Home**

**SPECIAL PRICE  
\$193,900**

**1,856 Sq. Ft. – 4 Bedroom, 2 Bath**

- Includes Unit
- Includes Concrete Basement
- Includes Excavation, Digout & Back Fill
- Includes Set & Finish
- Includes Delivery
- Includes Basement Stairs
- Includes Kitchen Appliances Per Plan
- Includes Outside Electrical Disconnect

**Excavation to Completion  
Home Plans**

**701-572-9354 | LHEATH.AK@GMAIL.COM**

# Watford City Wolves Homecoming

## Tuesday - Friday

### September 30<sup>th</sup> - October 3<sup>rd</sup>



**W**  
the **WATFORD**  
**HOTEL**  
★★★

810 3rd Avenue SW  
Watford City, ND, 58854  
701-842-6800  
www.thewatford.com

**Feedin' the Bakken**  
**TJ's PIZZA**  
& More  
Watford City, ND

Mon-Sat: 9am - 10pm • Sun: 4 - 9pm  
**701-842-2771**  
½ mile south on Hwy. 85

**LONG X BOTTLE**  
**SHOP**

Hwy. 85 Watford City  
701-444-3335  
Mon-Sat: 8am - 9pm  
Sunday: 1 - 5pm  
(Located in the Long X Visitor Center)

For all your application & crop  
protection chemical needs!

**TAYLOR**  
**Ag**  
**Service**

Kent Taylor, Owner  
Watford City, ND  
701-444-3772  
Licensed in ND & MT

**KIRKLAND**  
**INC.**

Watford City, ND  
Owners: Darrel & Leigh Ann Kirkland  
Mon-Fri: 8am - 5pm | 701-842-6379  
kirklandincwco@yahoo.com

**DC Farmer's**  
**Union Oil Co.**

**HOT STUFF**  
**PIZZA**

501 6th Ave SE  
Watford City, ND  
701-444-3639

**1 One**  
**Stop**

Hwy 85 W • Watford City, ND  
701-444-3122

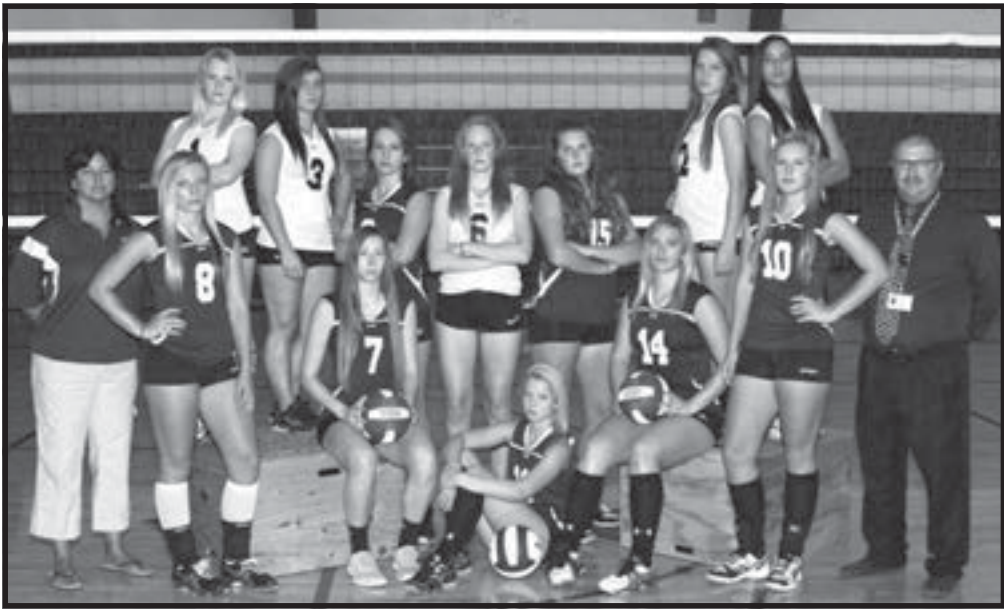
**Lund Oil Co.**  
Watford City, ND  
701-842-2805

**Northern**  
**States Fishing**  
**Tool Co., Inc.**

**Service & Rental Tools**  
Box 346 • Watford City, ND  
701-842-3350



**Back row (L-R):** McKenna Mayne, Alivia Olson, Alyssa Prichard, Kara Langerud, Addison Sundeen, Bailee Garmann.  
**Front row (L-R):** Trevor Alveshere, Dalton Wright, Keegan Thompson, Clay Jorgenson, Ted Ramage, Oliver Hermanson.



**Back row (L-R):** Addison Sundeen, Bailee Garmann, Katie Mogen, Emily Segneri, Mackenzie Sparby, Kara Langerud, Tarynn Jacobson.  
**Front row (L-R):** Asst. Coach Terrille Jacobson, Lea Arndt, Rikki Lindley, Brea Jore, Alli Mogen, Krystal Wold, Head Coach Brad Foss.



**Front Row (L-R):** Logan Fettig, Jonathan Dunn, Jaryn Homiston, Brenden Leaming, Justin Schwartzberger, Michael Neprash, Dalton Wright, Clay Jorgenson, Eric Leiseth, Bo Cook, David Kline.  
**2nd Row (L-R):** Eric Hellandsaas, Heath Chaffin, Cody Johnson, James Wahus, Beau Heiser, Daniel Marmon, Keegan Thompson, Derrike Hayden, Brandon Sandvik, Jacob Belland, Aaron Bigelow, Kyle Cook, Zach Wahus.  
**3rd Row (L-R):** Kye Bolken, Blake Bigelow, Rait Elliot, Anthony Cheney, Bridger Morken, Adrian Castanada, Brady Leiseth, Kason Hartel, Jarek Hogue, Jackson Voll, Tyler Krabenhof, Antonio Garcia.  
**4th row (L-R):** Austin Johnson, Carter Knutson, Hunter Neether, Carter Zenz, Tristan Hunt, Brett Skarda, Jackson Faller, Connor Dennis, Mikey Gorelik, Tyler Krabenhof.  
**Back Row:** Assistant Coaches Jerome Hoffman, Logan Suter, Eric Krogen, Mitch Greenwood, Head Coach Justin Johnsrud, Asst. Coaches Marshall Krebs, Pat Fitzgerald.



**Above Left: Girls (L-R):** Fabiola Lee-Morales, Emily Tarbox, Kara Langerud, Asha Smith, Addison Smith, Lea Arndt, Chelsea Cryer.  
**Above Right: Boys Front row (L-R):** Hunter DeFoe, Braedon Gumke, Michael Brown, Jack Gillespey, Lathan Smith, Raehs Puetz.  
**Back row (L-R):** Cauy Hartel, Osman Leon, Devin Schmitz, Trevor Alveshere, Dakota Garmann.



**Cross Country**

## Football

**RTC**

Smarter. Better. Faster.

www.RTC.coop  
Phone • Internet • TV

**Stop In For A**  
**Cold One!**

**D&M's Office**  
701-842-6132  
115 Main • Watford City, ND

**McKenzie County**  
**Tourism Bureau**

Long X Visitor's Center  
Watford City, ND  
701-444-5804  
www.4eyes.net

**OK TIRE STORES**

Mon-Fri: 7:30am - 5:30pm  
Sat: 7:30am - Noon  
**701-842-6654**

505 6th Ave SW  
Watford City

**McKenzie County Bank**  
Watford City, North Dakota

500 2nd Ave SW  
701-444-6411  
www.mckenziecountybank.com

**FDIC**

**Meyers Department Store**

**UHS**

"We Have Something For Everyone!"  
200 N Main  
Watford City  
701-444-2906

**Farmers Union**  
**INSURANCE**  
"You're Never Alone"

**Dennis Anderson**  
Representative  
701-444-3273  
229 N. Main  
Watford City, ND

**Delmar Rink**  
**Construction**

Keene, ND  
701-675-2700

**Richard Pump & Supply**

(406) 488-8706  
David Williams  
Cell (406) 489-8706  
Scott Ramus  
Cell (406) 489-8707  
1511 S Central Ave • Sidney

"Good Luck  
Wolves & Enjoy  
Homecoming!"

**TACO JOHN'S**  
109 6th Ave SE, #100 • Watford City, ND  
701-842-6505

**SADDLES & TACK**  
**SADDLE UP**  
WESTERN WEAR  
WATFORD CITY, ND

125 Main St. Lower Level  
Watford City, ND  
109 6th Ave SE • Watford City, ND  
www.saddleupsaddlesandtack.com  
701-842-2629

Agents with answers.

**Eric Mogen**  
Watford City  
444-6048

**Nodak Mutual Insurance Company**  
www.nodakmutual.com

**Pro**

**Auto Body**  
Corky & Marla Hayden  
405 7th St. NE  
Watford City, ND  
701-842-2797

**Dakota West**  
CREDIT UNION

329 N. Main • Watford City  
701-444-6484  
Toll Free: 800-411-7590

**S&S Motors**

- Pre-owned Vehicles
- Full Service Shop

701-444-2341  
WATFORD CITY, ND  
www.sandsmotorsinc.com

**McKenzie Electric**  
COOPERATIVE

908 4th Ave. NE  
Watford City, ND  
701-444-9288

# The Roundup Classifieds

Reach Over 21,000 Readers Each Week In Eastern Montana & Western North Dakota And Always On The Internet at [roundupweb.com](http://roundupweb.com)  
(Paypal required for online purchases)

Add a photo  
to your classy online!  
(additional charge)

Now Taking  
Credit Cards!  
(5% charge added  
to all transactions)

Get Up To 30 Words For Just \$9 • Deadline: Monday

## HELP WANTED ADMINISTRATIVE ASSISTANT/BOOKKEEPER

Qualifications: A local area Accounting Firm has an opening for an Administrative Assistant/Bookkeeper. Employer prefers someone that has experience working in an office setting and is proficient in the use of a computer and able to work with software programs such as Microsoft Word, Excel and Quick Books Pro. A qualified applicant must be able to maintain client confidentiality, be personable, organized, and able to work under pressure, able to take initiative to get work done with minimal supervision. Duties will include: greets and assist clients; perform notary duties; schedules appointments; answers multi-line phones, directs calls; assist in processing tax returns and other financial documents to insure that each is complete, in order and handled properly; maintains paper and electronic files of tax returns and other financial documents; help prepare client payrolls, payroll reports and bookkeeping; assists with verifying work performed for clients to insure accuracy and compliance with procedures on policies. Hours/Days: This is a full-time, permanent job with work hours of 8 AM to 5PM, Monday through Friday, with some overtime during the busy times of year such as tax season. Wages: Pay is negotiable depending on qualifications and experience. Fringe Benefits: Include a 401K Retirement Plan, Health Insurance, Life Insurance and Paid Time Off.

Referral Instructions: The employer is CHMS, PC. To apply for this position pick up an Application at CHMS, P.C. Sidney Office at 104 2nd Ave SW, Sidney, MT 59270. Application and a Resume should be turned in to the CHMS, P.C. Sidney Office at 104 2nd Ave SW, Sidney, MT 59270.

## GYMNASTICS COACH

Assistant coaching positions available at the Sidney Gymnastics Club. No gymnastics experience necessary. Must love working with the area youth. Fill out generic application from Job Service. To

set up and interview contact Jason or Kelly Deming. 406-742-3876.

## LIBRARY DIRECTOR

Public Library Director Job Opening, Sidney Montana The Sidney-Richland County Public Library Board of Trustees is accepting applications for the position of Library Director. A graduate degree in Library Science from an accredited university and five years of experience in a public library with management experience is preferred. Applicants must have a Bachelor's Degree in a related/ relevant field. A combination of education and experience may be considered. Salary DOE and qualifications. The Library offers a generous benefits package to include retirement, longevity, healthcare, vacation

and sick leave.

Submit a cover letter, resume, and contact information for three references to Sidney-Richland Public Library Board of Trustees, 121 Third Avenue N.W. Sidney, MT 59270 or by e-mail to: [sidney-publib@richland.org](mailto:sidney-publib@richland.org). Open until Filled.

## CARRIERS WANTED

Need extra cash or want to get some exercise while getting paid? We have carrier routes available in most parts of Sidney. Call 406-433-3306, or fill out application at The Roundup, 111 W. Main, Sidney.

## WANTED SERVERS & KITCHEN STAFF

Wage DOE. Apply in person at Cattle-Ac, 119 N. Central Ave., Sidney, MT.

## HELP WANTED

Full time position for a Paralegal with loan documentation experience or a Loan Processor with experience in documenting and processing loans to work in our Watford City office. Duties include preparing loan documents, lien perfection, loan file organization, and insurance tracking. Must possess excellent verbal and written communication skills, be able to handle a variety of situations and work in a professional office environment. Salary is commensurate on experience and we offer a competitive benefit package for full time employees. Send application or resume to Dakot West Credit Union, Attn: Sue Keller, PO Box 1496, Watford City, ND 58854, email: [susand@dakotawestcu.org](mailto:susand@dakotawestcu.org) or call 1-800-411-7590. EOE.

as a cafe, however would make good office, bakery, deli or cafe. Remodel to meet your needs. 701-580-0306 or 701-770-6308.

## LAND FOR SALE

3 acres 3 miles east of Watford City. Trees, driveway, power, propane. \$169,000. 218-820-5550.

## 4 BEDROOM COTTAGE ON 2 ACRES

A 3rd generation homestead ready for you to move in! This cozy cottage sits on 2 acres w/ mature trees, private patio & room for your toys. Detached garage plus 2 shops. Zoning is open. Contact Deb with Parker & Co. Real Estate Services for info. 406-591-4610 or [deb@debarker.com](mailto:deb@debarker.com).

## FOR SALE OR LEASE

Heated, airconditioned, finished 70'x100' building. 80'x200' cold storage building on approximately 4 acres. 406-489-1880.

## 5 ACRE COMMERCIAL LOTS FOR SALE

Conveniently located between Williston & Watford City, right off Hwy 85. Graded recently. Perfect for a new shop, or business! Lots have rural water, power, RTC, & electric right at the road. Hwy 85, S. on 140th Ave NW, 1/4 mile on right. 406-471-4049.

## HOUSE FOR SALE

3 bedroom, 1 3/4 bath. Dutch colonial with detached car garage. 12x12 storage shed and underground sprinklers. 316 8th St SE. Sidney. 406-480-2459.

# HELP WANTED

Now hiring Class A CDL/Equipment Operator. 100% Employee owned. Competitive wages & benefits.

35023 County Road 123-Powerplant Rd. Sidney, MT-800-548-6364 • 406-433-1301 Fax: 406-433-1308 [dale\\_gambrel@pacific-steel.com](mailto:dale_gambrel@pacific-steel.com)



# Crestwood Inn



1-Bedroom units available for low-income elderly/disabled 1 or 2-person family

410 3rd Ave. SW • Sidney, MT | 406-433-3721 or TTY 711

# COOKS NEEDED!

We Need Full & Part-time Cooks!!



Hi-Way Lounge  
Alexander, ND • 701-828-3100

# Mini-Storage



STORAGE UNITS AVAILABLE

20X20 • 10X20  
10X16 • 8X9

Sidney, MT  
482-3799 or 482-2666

# Earn Some Quick Cash!



During Harvest • 4-6 Hours Nightly • 2-3 Weeks



Sidney Sugars Incorporated  
is seeking workers for our  
Quality Lab

No Experience Necessary • Wage: \$13<sup>58</sup> hourly  
(time & a half on weekends)

Call Steve or Karen at Express Employment  
**701-330-4695**

Sidney Sugars Incorporated is an Equal Opportunity Employer & a Drug Free Workplace

## REAL ESTATE

### FOR SALE OR LEASE

24'x62' building in Alexander ND, for sale or long term lease. Building is currently configured

## Bakken Mobile Veterinary Service

Dr. Vince Stenson  
Complete small animal care  
8 am - 4 pm

### Sidney:

Th, Oct 16 | Tues, Oct 7 & 28  
Tractor Supply Co.

### Culbertson:

Wed, Oct 1, 8, 15, 22, 29  
County Ext. Bldg on Main Street

### Bainville:

Wed, Oct 15  
The Welcome Stop

### Fairview:

Wed, Oct 1, 29  
The Powder Keg

Call for Appointment  
(701) - 609 - 3705

# FRANZ CONSTRUCTION INC.

## Is Looking For:

- Truck drivers with current CDL
- Equipment operators
- Mechanics
- Welders

Benefits Available  
Wages DOE

Apply in person or  
Employment Office

1700 S. Central • Sidney, MT



# EMPLOYMENT OPPORTUNITIES

Sidney Health Center's most valuable resource is the people who serve our patients, residents and guests. Join our team!

- Administrative Asst. / Unit Secretary ECF
- Cardio Pulmonary Rehab Manager
- Clinic Pharmacy Cashier  
DME Sales
- Engineering Maintenance Worker
- Food Services  
Cook  
Supervisor  
Utility Worker
- Student Worker

We promote a Work-Life Balance



9 Out of 10 Employees Agree:  
"I don't have to choose between my job and family!"

For additional information or to apply online, please visit our website or contact: Marilyn Olson • Phone: (406) 488-2571  
[mjolson@sidneyhealth.org](mailto:mjolson@sidneyhealth.org) • 216 14th Ave SW • Sidney, MT

Visit Our Website at: [www.sidneyhealth.org](http://www.sidneyhealth.org)

# HELP WANTED

Are you looking for a fulfilling career with a large regional energy supplier? If so, MDU is looking for you!

**Position: Results Technician**

**Location: Sidney, MT**

## Major Responsibilities:

- Performs all duties associated with the maintenance, installations, and inspection of all electronic equipment, instrumentation and including water chemistry within a power plant facility

## MDU Offers:

- Competitive salary
- Eligible for Annual Incentive and Safety bonus plan
- 401(k) savings plan with employer match and retirement contribution
- Health, dental, vision and life insurance
- Tuition Reimbursement

**Apply Today at [jobs.mdu.com](http://jobs.mdu.com)!**

Montana-Dakota Utilities Co. is an Equal Opportunity Affirmative Action Employer. All qualified applicants will receive consideration for employment without regard to race, color, religion, sex, national origin, disability, or protected Veteran status.

**Montana-Dakota Utilities Co. • A Division of MDU Resources Group, Inc**



Must be legally authorized to work in the United States, no sponsorships considered. Subject to pre-employment drug testing & background checks.

Apply online & check our other vacancies currently open with the MDU Resources Group, Inc. on our website: [jobs.mdu.com](http://jobs.mdu.com)

**FOR RENT**  
**RETAIL SPACE FOR RENT**  
Located in downtown Sidney, carpeted throughout, security cameras, cell phone booster, wireless internet, in-house restaurant, \$500/mo. Call Linda 406-489-1945 or Melissa 360-708-8170.

**SERVICES**  
**CLEANING**  
Will clean houses, apartments, rental units, work force housing, business offices, anything you need cleaned, I can do. Weekly, bi-weekly times available. Will clean around your schedule. Shampoo carpets

**The Roundup**  
**Auto Trader**

**Only \$17 A Week!**  
If you run it for 2 weeks & it doesn't sell, we'll run it for 2 more weeks..... **FREE!**

**2005 Ford Ranger XL**  
4x4, 4.0, automatic, in very good condition.  
50,000 miles.  
Call 701-770-1622



**\$10,500**  
or best offer

**Want to place an ad in the Auto trader?**  
classads@esidney.com • (406) 433-3306 for details

**The Roundup**  
**Classifieds**

Reaching over 10,659 Households in Western North Dakota and Eastern Montana Every Week

(Please Print)

1	2	3	4	5	6
7	8	9	10	11	12
13	14	15	16	17	18
19	20	21	22	23	24
25	26	27	28	29	30
31	\$9.10	32	\$9.20	33	\$9.30
34	\$9.40	35	\$9.50	36	\$9.60 (etc.)

**\$9.00 for 30 words or less; 10¢ per additional word**  
**Payment Must Accompany Ad**

Number of words \_\_\_\_\_ x Number of Times \_\_\_\_\_ = Cost \$ \_\_\_\_\_

**Mail To:**  
The Roundup  
PO Box 1207, Sidney, MT 59270

**THE BUSINESS ROUNDUP**  
REACH **26,500** READERS IN THE ENTIRE MONDAK REGION  
**406-433-3306 OR 800-749-3306 ~ INFO@ROUNDUPWEB.COM**

GO TO [WWW.ROUNDUPWEB/DIRECTORY](http://WWW.ROUNDUPWEB/DIRECTORY) FOR DIRECT LINKS TO COMPANY WEBSITES & LOCATIONS

**\$25<sup>00</sup>/WK**



**Divine Health Solutions**  
REFLEXOLOGY  
**Vickie Arends**  
Williston, North Dakota  
**479-466-7356**  
Member of International Institute of Reflexology  
2eagles@midco.net | Licensed by the state of North Dakota

**TRADING POST**  
111 E. MAIN STREET • SIDNEY, MT. 59270  
CONSIGNMENT • ANTIQUES  
GUNS • TOOLS • PAWN  
1-406-433-7676  
ASK FOR JERRY OR JOANNA

**Beagle**  
PROPERTIES INC.  
View all our listings at  
[www.beagleproperties.com](http://www.beagleproperties.com)



**SONDA'S**  
**solutions**  
Specializing in FR Clothing  
OFFICE: 406-433-6757 • CELL: 406-697-7153  
2221 S. CENTRAL AVENUE • SIDNEY, MT 59270  
FAX: 406-433-6755 • WEBSITE:  
[WWW.SONDASOLUTIONS.COM](http://WWW.SONDASOLUTIONS.COM)

**Coverage for all the things you care for.**

**TIFFANY STEFFAN**  
323 E Main Street,  
SIDNEY, MT 59270  
TSTEFFAN@FARMERSAGENT.COM

**FARMERS**  
INSURANCE

Call 406-433-1377 today for Auto, Home, Life and Business.

**SIDNEY WOODWORKER & LUMBER**  
1450 5th St SW • Sidney, MT  
406-433-7767 • Fax: 406-433-7768 | M-F: 8 - 5:30pm • Sat: 8 - 3pm

& deep cleaning as well. 406-478-2373 or 406-488-1192 leave message. References available upon request.

**PAINTING**  
Will paint houses, barns, quonsets, silos, grain bins, etc. References available. R&L Painting, 406-488-8244.

**WELDING**  
Welding & repair work. No job is too small. Portable welder, reasonable rates. 701-444-2936.

**FARM & RANCH PUPPIES FOR SALE**  
Border Collie, Blue Heeler cross puppies out of working parents. Have had first shots, ready to go. Franz Ranch 406-798-3675 in Sidney, MT.

**MINERALS & SUPPLEMENTS**  
Complete line of minerals & supplements, Crystalx protein & mineral tubs for cattle, horses & sheep. All types of liquid feed for livestock. Calving supplies. R&J Ag Supply 406-488-1953, 406-480-2006, 1-800-233-2499, Sidney, MT.

**VERMEER HAYING EQUIPMENT**  
See us today for all your haying & feeding equipment, sweeps & farm oil. Anderson Vermeer Sales & Service. Open Mon.-Fri., 8 a.m.-5:30 p.m. 701-828-3358 or 701-

828-3482 (after hrs.). Alexander, ND.

**MISC. FOR SALE AIRCRAFT**  
Buying or selling. Call Barry at Sidney Air Service Inc. 406-480-2024.

**VEHICLES FORD SUPER DUTY**  
'05 Ford Super Duty 6.0L diesel for sale. 135,000 miles, new tires, fresh alignment,

B&W gooseneck hitch, EGR delete kit, bed liner, VERY good condition. \$12,000 OBO. 701-863-7010 leave message.

**FOR SALE**  
1984 Corvette. Burnt orange - sharp! Very good condition. \$23,000 in restoration including new paint, new interior, new stabilizer bars, tires. Will sacrifice for \$14,000. 406-489-1880.

**AIRCRAFT FOR SALE:**  
**1981 Hughes 269C TTAf 3132:** TSMOH 845, 3 new M/R blades, Component times on request, big fuel and much more. ~~\$157,000~~ **\$147,000**  
**Call Barry at Sidney Air Service: 406-480-2024**

**HEADQUARTERS FOR STOCKMEN**  
**Williston Saddlery**  
14096 West Front Street - Williston, ND 58501  
4 1/2 Miles West on Hwy. 2



- Trailers
- Saddles & Tack
- Complete Feed Line
- Livestock Equipment
- Animal Health Products



We are like a good Horse - We aim to please

TELEPHONE (701) 572-2267

**Kids, Earn \$\$\$**  
**Join The Roundup Carrier Team!**



**\$100**  
**SIGNING BONUS!\***  
**Plus Cold Weather Bonus During the Winter Months & Periodic Raises!**  
**Routes Available In Many Sidney Neighborhoods! Call Erin at (406)433-3306 for details.**

  
\*Distributed over a 5 month period.

**CUSTOMER SERVICE IS OUR #1 PRIORITY**  
**BORDER**  
STEEL AND RECYCLING, INC.  
Brady Smelser • Tim Mulholland • Kelly Moody • Bret Smelser • Ernie Gawryluk  
Sidney 35002 CR 123 406-433-7737 1-855-810-2995  
Glendive 2703 W. Towne St. 1-800-423-5219  
Williston 13896 W. Front St. 1-800-820-5493  
Plentywood Hwy 16 East 406-765-2624



**DOORBUST'N**  
Portables & Septic Service, LLC  
Blaine Rogers, Owner  
PO Box 1003 Sidney, MT 59270  
Office: (406) 433-7586 Fax: (406) 433-7596 Service: (406) 488-0915  
[www.doorbustnportablessepticsservice.com](http://www.doorbustnportablessepticsservice.com)

**NICK JONES REAL ESTATE**  
REALTOR®  
TRUCK ROUTE SOUTH, SIDNEY  
OR CONTACT ONE OF OUR AGENTS:  
Justin Jones 406-480-9525 Dennis Wick 406-480-1550  
Jermain Fawcett 406-478-3773 Kristin Larson 406-480-5139  
[WWW.NICKJONESRE.COM](http://WWW.NICKJONESRE.COM)



**AGRI INDUSTRIES**  
Ken Tyler  
Utility Foreman  
email: ktyler.agri@gmail.com



1-877-488-8066  
Office: 406-488-8066  
Fax: 406-488-8067  
1775 S. Central Ave.  
Sidney, MT 59270  
[www.agriindustries.com](http://www.agriindustries.com)



**SLS SERVICES, INC.**  
Oil Field & Industrial Construction  
2265 S. Central Ave.  
Sidney, MT 59270  
Email: [les@slsservices.net](mailto:les@slsservices.net)  
Phone: 406.433.6754 Fax: 406.433.6755  
[www.slsserviceinc.com](http://www.slsserviceinc.com)



**MFCP MOTION & FLOW**  
CONTROL PRODUCTS, INC.  
Fluid Connectors - Industrial Hose - Seals  
Hydraulics - Pneumatics - Automation  
Filtration - Racor - Instrumentation  
406.433.1590  
AMV Hours 406-478-3118 Fax 406-433-1599



SIDNEY, MT  
205 10th Avenue SE  
[WWW.MFCPINC.COM](http://WWW.MFCPINC.COM)

# Vo Ag Teacher Offers Hands-on Experience, Encourages Community Involvement



FFA Officers (L-R) Sierra Osborne, Reporter; Marcus Lovegren,VP; Chris Gartner, President; Garret Leland, Secretary; and Casey Christensen,Treasurer.

By Meagan Dotson

In January of 2014, Ted Fulgham made the switch from working in the oilfield to becoming the Vo Ag teacher at Sidney Senior High School. Having previously taught at Montana schools in Hardin for eight years, Lodge Grass for 3 years, and Joliet for two years, Fulgham is pleased to once again be working with students.

The Vo Ag department includes Animal, Equine and Livestock studies, as well as Agronomy and Welding. These programs teach basic skills for continued education or entering the workforce. For example, the welding class teaches the fundamentals of the trade so that a graduate would have the

knowledge to become a welder's helper in the oilfield.

"These classes give students an outlet. Kids need to have someplace where they can do something hands-on. This gives them an opportunity to show success in areas other than academics," Fulgham commented.

There are 45 students between the mechanics, agronomy, farm business and livestock judging teams. As of two years ago, the state of Montana now pays FFA dues and this year FFA has between 80 and 90 members.

In addition to FFA involvement, class sizes have also increased as students in these classes range from freshmen to seniors. Equine studies are an addition Fulgham introduced to the program. Community service is also a big part of hands on learning in the department and everyone in Fulgham's

classes are involved in volunteer work.

"If you are going to be in my classes," says Fulgham, "you will be involved with serving the community."

Over the summer FFA put on a petting zoo in the Tractor Supply Parking lot as a way to get people interested and involved. October 16<sup>th</sup> they will be helping with commodity boxes which are boxes filled with non-perishable food items distributed to elderly and low-income residents.

Upcoming events for the Vo Ag department include District Livestock Judging October 1<sup>st</sup> involving all districts from the Big Muddy region. Fulgham's students will also be participating in John Deere Ag Days in Bozeman, MT November 13, 14 and 15.

Fulgham adds that he is always open for ideas and input from the community. Anyone who would like to become involved is welcome to help out. He can be contacted at SHS at 406-433-2330.

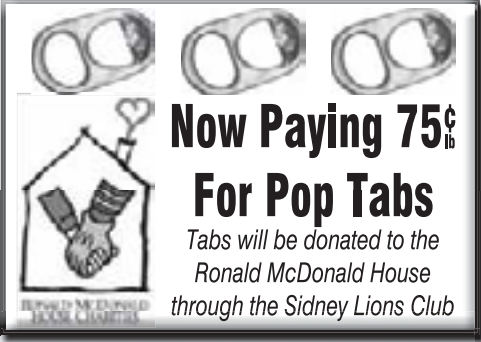


Randy Lander, shows his horse for an Equine Breed project in the Equine Science Class.

## WE ARE OVERSTOCKED!

50" x 16' Cattle Panels.....	\$19 <sup>95</sup> <sub>ea.</sub>
50" x 16' Combo Panels .....	\$29 <sup>95</sup> <sub>ea.</sub>
5" x 12' 1¾ Corral Panel.....	\$78 <sup>99</sup>
330' Rolls Field Fence:	
32" .....	\$119 <sup>99</sup>
39" .....	\$134 <sup>99</sup>
47" .....	\$154 <sup>99</sup>

Offers good while supplies last.



**PACIFIC**  
STEEL & RECYCLING™

Montana & North Dakota | Mon-Fri: 8am - 5pm  
35023 CR 123, Sidney | 406-433-1301 • 1-800-548-6364

## NEW FROM NASA'S EXPERIMENTAL TECHNOLOGIES DEPARTMENT:

**Ryan** MOTORS 701-577-1111 1212 W 2nd St, Williston, ND

# The 2014 Ram 1500!



Watford City  
6th Grade  
Football  
Action

Watford City's Austin Wood follows his blockers as he carries the ball for a first down in Saturday's 6th grade football game against Williston. Williston defeated Watford City in the 6th grade game 14-8. (Photo by Kathy Taylor)



MSU  
Graduate  
Joins Staff at  
High Plains  
Vet Clinic

Anna Downen has been working at the High Plains Veterinary Clinic in Sidney since May, 2014. Downen and her team competed and placed 2nd in the National Animal Science Competition in July. The 24 year old Columbia Falls native recently graduated from MSU- Bozeman with a BS in Animal Science with a focus on equine. While Anna is working at the front office she also gets to help with the animals that are brought in and hopes one day to become a Certified Veterinary Technician. (Photo by Susan Schieffer)

Lunch  
Menus

Sidney School

Thur., Oct. 2: Corn dogs, french fries, mandarin oranges.  
Fri., Oct. 3: Chili, cinnamon roll, pineapple tidbits.  
Mon., Oct. 6: Ravioli, garlic toast, tossed salad, pears.  
Tues., Oct. 7: Taco hot pocket, tossed salad, fruit fluff.  
Wed., Oct. 8: Tater tot hot dish, green beans, peaches, apple crisp.

Savage School

Thur., Oct. 2: Baked potato bar, broccoli, cheese, chili/taco meat, fruit cocktail.  
Fri., Oct. 3: Turkey noodle, carrots/corn, pineapple, whole grain buns.

Froid School

Thur., Oct. 2: Chili, elephant tracks, salad bar.  
Fri., Oct. 3: Polish dogs w/sauerkraut, baked beans, ruffle chips, salad bar, fruit.  
Mon., Oct. 6: Biscuits and gravy, southwestern scrambled eggs, mandarin oranges, breakfast bar.  
Tues., Oct. 7: Chicken noodle soup, egg sandwiches, pickle spears, salad bar.  
Wed., Oct. 8: Roast beef, mashed potatoes/gravy, green beans, salad bar, vanilla pudding.

Rau School

Thur., Oct. 2: Cook's Choice.  
Fri., Oct. 3: Soup, bread, fruit.  
Mon., Oct. 6: Chicken chalupa hotdish, veggies, fruit salad.  
Tues., Oct. 7: Taquitos, beans & rice, veggies, fruit.  
Wed., Oct. 8: Ham & potato hotdish, carrots, fruit.

Lambert School

Thur., Oct. 2: Polish sausage, cabbage, mixed fruit.  
Fri., Oct. 3: Ham & turkey subs, fresh veggies, chips, snicker salad.

Culbertson School

Thur., Oct. 2: Tater tot casserole, mandarin oranges.  
Fri., Oct. 3: Chicken wraps with lettuce, carrots and celery, pears.  
Mon., Oct. 6: Nachos with chips and cheese, kidney beans, tomato slice, grapes.  
Tues., Oct. 7: Pork chops, stuffing, peas, applesauce.  
Wed., Oct. 8: Hot pockets, coleslaw, broccoli and cauliflower, peaches.

Richey School

Thur., Oct. 2: Mac & cheese, baked beans, peas, pears.  
Fri., Oct. 3: Spaghetti, bread stick, green beans, pineapple.  
Mon., Oct. 6: Chicken strips, baked hash browns, applesauce.  
Tues., Oct. 7: Taco soup, dinner roll, apple crisp.  
Wed., Oct. 8: Super nachos, peaches, cake.

Fairview School

Thur., Oct. 2: Taco in a bag, raw veggies, mandarin oranges, dessert.

Fri., Oct. 3: NO SCHOOL

Bainville School

Thur., Oct. 2: Turkey & cheese wraps w/lettuce, peach halves.  
Fri., Oct. 3: Meatballs in Marinara, pasta, bread stick, fresh veggies, fruit cup.

# SAVE THOUSANDS ON OUR FULL LINEUP OF NEW GM VEHICLES

*Come visit with our friendly staff for details!*

SEE THESE SALES CONSULTANTS FOR QUALITY CAR BUYS!

Pat Murphy Dealer	Mark Waggoner Credit Doctor	Rick Moe Sales Manager	Ben Brewer New Car Manager	Kelly Blomberg Fleet Manager	Anthony Thompson Business Manager

Dorothy Falcon Fleet Sales	Tim Swenson Sales	Patti App Sales	Tom Torkley Sales	Jimmy Ramirez Sales

So Habla Espanol

Mark Waggoner is "The Credit Doctor"

Credit Concerns?  
Apply online at  
[www.NDcreditDR.com](http://www.NDcreditDR.com)

1801 2nd Ave. W. Williston, ND Call 1-800-888-2927 or 701-577-2927 •Hours: Mon. 8am-8pm ; Tues.-Fri. 8am-6pm; Sat. 9am-5pm

[www.murphymotors.com](http://www.murphymotors.com)

**By Warren Froelich  
NDSU Extension Agent  
Williams County**

**Terms and Conditions:** Cash or Good Check. All items sold "As is Where is", no warranties are expressed or implied by Montana Auction Company or the Sellers. Any and all statements made on sale day by Auctioneers and owners take precedence over any and all advertising. Information given is believed to be true and correct to the best of the owners knowledge. All potential buyers are urged to inspect items prior to bidding. All Sales are considered final. Buyers are responsible for purchased items once marked sold. Not Responsible for accidents.

# TIRED OF PAYING HIGH RENT?

You could own this new Modular Home with a payment about the same (or less) than your Rent Payment!



NEW 3 Bed, 2 Bath Modular Home, 1620 Sq. Ft., on a one-acre lot in Missouri Meadows for approximately \$2,000 monthly. Missouri Meadows is located just 4 miles east of Walmart in Williston. It is a beautiful, quiet country setting. A great place to live & raise a family!

Easy financing availble! Ready to move into!  
Call J&J Homes for details  
3820 6th Ave. W, Williston - Behind Walmart  
701-570-9390 • 701-774-5310 | www.HomesJJ.com



# ‘E-rase your E-waste’ Exceeds Collection Goal



So that’s why they call them computer towers!  
Just some of the more than 300 CPUs collected at this year’s E-rase your E-waste events. Altogether more than 44,000 pounds of outdated electronics were recycled in 2014, the 10<sup>th</sup> year of the local e-cycling program.

# GO WOLVES!

Good Luck At Homecoming • Oct 3<sup>rd</sup>





New Purses Arriving Daily!



Woodwick & Ribbonwick Candles!

## Barrett Pharmacy & Variety

145 Main • Watford City, ND | 701-842-3311



Everything Roundup on the web.

Submitted by Beth Redlin

The results are in and, once again, E-rase your E-waste organizers have exceeded the goal they set for their 2014 annual collection events.

“We wanted to celebrate our 10<sup>th</sup> anniversary by collecting enough e-waste to bring our 10-year total over 175 tons, and we did it with one and a half tons to spare,” Committee Chair Jackie Couture noted. “Altogether, we collected 44,118 pounds of e-waste this year through our May and September events. That’s a lot of potentially hazardous waste that is NOT going into our local landfill!”

Organizers reported that 144 individuals, businesses, schools and more brought in 12.6 tons of outdated electronic items for recycling to the group’s fall event on Sept 5-6. In May, another 112 individuals and businesses participated in the group’s spring collections in Sidney and Fairview, bringing in another 10 tons.

Among the items recycled at both events were: 249 computer monitors; 305 CPUs; 236 printers, 225 TVs, along with 77 phones, 69 laptops, 20 copiers 14 fax machines, 10 microwaves and innumerable keyboards, cameras and other small items. Miscellaneous scanners, smart boards, projectors, vcrrs, boom-boxes and even an organ were also collected, along with more than 553 pounds of batteries. The latter, along with the leaded glass contained in the TVs and computer monitors, meant that more than 6,000 pounds of potentially hazardous lead was kept out of the local landfill, Couture noted. In addition, nearly 11,700 pounds of plastic were also recycled under this year’s program.

While the bulk of participants in 2014 were Sidney and Richland County (MT) residents; several also traveled from as far away as Plentywood, Richey and Circle in Montana, and Williston and Watford City in North Dakota.

Yellowstone E-waste Solutions of Billings provided their e-cycling services free of charge at both spring and fall events, Couture noted, adding, “They do a wonderful job for us!”

The “E-rase your E-waste” effort in Sidney is coordinated by members of the Richland County Local Emergency Planning Committee (LEPC), Richland Opportunities Inc., and volunteers with other community organizations including the RSVP program. The Montana Department of Environmental Quality has also committed funds for advertising the 2014 event and the Richland County Public Works Department makes their facilities available for the collection event in Sidney.

“It’s a group effort every year,” Couture noted. “And we really appreciate everyone’s commitment to keeping our community healthy and safe.”

# To the editor:

The E-rase your E-waste committee would like to thank everyone who helped us reach our e-cycling goal earlier this month in celebration of our 10<sup>th</sup> year of providing e-cycling opportunities to the MonDak region.

Our goal was to reach 175 tons of e-waste collected for reuse or proper disposal over the past 10 years, and we made it with a ton and a half to spare! Thanks to the 144 individuals, businesses, agencies and organizations participating in our Sept. 5-6 event who brought in more than 24,800 pounds of e-waste for recycling to put us over the top!

Altogether, we collected a grand total of 44,118 pounds of e-waste at our May and September 2014 E-rase your E-waste events in Sidney and Fairview (May only). That’s more than 22 TONS of e-waste that DIDN’T go into our local landfill again this year! That e-waste included an estimated 11,185 pounds of plastics, 6,129 pounds of lead and 1.3 pounds of mercury.

Our thanks to everyone who made it possible: our participants, our volunteers, our local media, both print and broadcast, our sponsors and our e-cycler, Yellowstone Solutions Inc. of Billings, whose participation enables us to support a Montana business and still provide free e-cycling for our community.

The organizing committee also wants to extend our heartfelt appreciation to the Richland County Solid Waste and Disaster and Emergency Services departments for providing the space along with logistical and financial support for our 2014 events, and the Montana Department of Environmental Quality for providing promotional support. We’d also like to thank volunteers Deb Gilbert and newcomer Jessica Davies for their help with this year’s fall event.

Again, thanks to everyone for making our 10<sup>th</sup> year of e-cycling another big success!

The 2014 E-rase your E-waste Committee  
Jackie Couture, Chairperson

# RMC

## RIVERSIDE MARINE & CYCLE USED INVENTORY FALL AUCTION

**SATURDAY, OCTOBER 11TH, 2014 • 11:00 A.M.**  
**LOCATION:** Richland County Fairgrounds, Sidney, MT  
**OWNER:** RMC 406-232-3300 or 1-800-322-7817



### ATVs

- 2008 Arctic Cat 380 4x4, green
- 2012 Arctic Cat 700T, gray
- 2004 Honda Rubicon TRX500FA, red
- 2004 Honda Rubicon TRX500FA, red
- 2005 Honda Rancher AT TRX450FA, green
- 2006 Honda Rancher TRX420FPA, red
- 2008 Honda Rancher TRX420FPA, green
- 2007 Honda Rancher TRX420FPA, blue
- 2007 Honda Rancher TRX420FPA, red
- 2008 Honda Rancher TRX420FPA, red
- 2008 Honda Rubicon TRX500FA, red
- 2008 Honda Foreman TRX500FPA, white
- 2009 Honda Rancher TRX420FPA, white
- 2009 Honda Foreman TRX500FPA, red
- 2009 Honda Rancher TRX420FPA, red
- 2011 Honda Rancher TRX420FPA, green
- 2011 Honda Rancher TRX420FPA, red
- 2012 Honda Rancher TRX420FPA, green
- 2012 Honda Foreman TRX500FPA, green
- 2012 Honda Foreman TRX500FPA, green
- 2012 Honda Foreman TRX500FPA, red
- 2013 CF Moto CF800-2 800 X, Orange, 2-up
- 2005 Polaris Sportsman 700, gray
- 2006 Polaris Sportsman 800 H.O., red
- 2006 Polaris Sportsman 400, camo
- 2009 Polaris Sportsman 500 LE, red
- 2008 Polaris Sportsman 500, camo
- 2010 Polaris Sportsman 500 XP, camo
- 2011 Polaris Sportsman 500, red
- 2011 Polaris Sportsman 500, green
- 2011 Polaris Sportsman 800 XP, green, power steering
- 2013 Polaris Sportsman 500, red
- 2005 Suzuki Kingquad 700
- 2007 Suzuki Kingquad 500
- 2008 Suzuki Kingquad 500, white, power steering
- 2011 Suzuki Kingquad 500, yellow, power steering
- 2009 Yamaha Grizzly 700, camo, power steering
- 2009 Yamaha Grizzly 550, black, power steering
- 2010 Yamaha Grizzly 550, blue, power steering
- 2013 Yamaha Grizzly 550, green, power steering



### SIDE-BY-SIDES

- 2011 Honda Big Red MUV700, green
- 2012 Honda Big Red MUV700, red, full hard case, heat
- 2007 Kawasaki Mule 3010 Trax
- 2011 John Deere 825L, green, glass cab
- 2012 John Deere 825L, green, glass cab
- 2006 Polaris Ranger 500, green
- 2008 Polaris Ranger 500 XP, green
- 2009 Polaris Ranger 700 XP, red
- 2009 Polaris Ranger 700 XP, green
- 2009 Polaris Ranger 700 LE, red
- 2010 Polaris Ranger 800 XP, red, steel cab & heat
- 2010 Polaris Ranger 800 XP, red
- 2010 Polaris Ranger 800 XP, green
- 2010 Polaris Ranger 800 XP, blue
- 2010 Polaris Ranger 800 LE, XP, blue
- 2010 Polaris Ranger 800 LE, XP, orange
- 2010 Polaris Ranger 800 LE, XP, in red, power steering, steel cab & heat
- 2010 Polaris Ranger Crew 800, red, steel cab & heat
- 2011 Polaris Ranger 800 XP, red
- 2011 Polaris Ranger 800 LE, XP, black & red
- 2011 Polaris Ranger 800 LE, XP, black & white
- 2011 Polaris Ranger 800 LE, XP, blue
- 2011 Polaris Ranger 800 HD, green, power steering
- 2011 Polaris Ranger Crew 800, red
- 2012 Polaris Ranger 800, red, hard case & heat
- 2012 Polaris Ranger 800 XP, red
- 2012 Polaris Ranger 800 XP, red, gas steel cab & heat
- 2012 Polaris Ranger 800, green, steel cab & heat
- 2012 Polaris Ranger 800 XP, green
- 2012 Polaris Ranger 800 XP, red
- 2012 Polaris Ranger 800 XP, red
- 2012 Polaris Ranger 800 XP, green, power steering, steel cab & heat
- 2012 Polaris Ranger 800 XP, green, power steering, steel cab & heat
- 2012 Polaris Ranger 800 XP, red, power steering
- 2012 Polaris Ranger 800 XP, red, power steering
- 2012 Polaris Ranger 800 XP, gray, power steering
- 2012 Polaris Ranger 800 HD, green, power steering
- 2012 Polaris Ranger 800 HD, green, power steering
- 2013 Polaris Ranger 800 XP, green
- 2013 Polaris Ranger 800 LE, XP, in red, power steering, gas steel cab & heat
- 2012 Polaris Ranger 800 XP, red
- 2013 Polaris Ranger 800 XP, green
- 2013 Polaris Ranger 800 XP, in red, power steering
- 2011 Polaris 800 RZR S LE, red & white



### MOTORCYCLES

- 2006 Honda CRF250X, red
- 2007 Honda CRF250X, red



### QUADS

- 2006 Honda TRX450R, black
- 2006 Yamaha Raptor 700 SE, yellow



### SPECIAL NOTES FROM OWNERSHIP:

- Photos only bid on items you are prepared to pay for the day of the sale.
- All units have a 30 day in-house warranty unless otherwise stated.
- RMC is not responsible for moving owner's manuals or tool kits.
- There is a required \$50 processing fee for all sales.
- There is a 3% charge for credit card transactions.
- Owner's license number or tax ID number required for all sales.



### STATEWIDE AUCTION

WE SELL & ADVERTISE ACROSS THE UNITED STATES  
**www.r-kauction.com**  
Rick Kniepkamp (406) 485-2548 or call (406) 939-1632



### AUCTIONEER'S NOTE:

Matthew at Riverside Marine & Cycle will be holding his semi-annual ATV and Motorcycle Inventory Reduction Auction on October 11th, 2014. These machines have been run through the shop and are ready to be used. This sale will be held inside at the Richland County Fairgrounds in Sidney, MT. Purchase your ATV or Side-by-Side now! Hope to see you there! Rick

**THANK YOU FOR ATTENDING OUR AUCTION! BID WITH CONFIDENCE, ENJOY!**



### STATEWIDE AUCTION

WE SELL & ADVERTISE ACROSS THE UNITED STATES  
**www.r-kauction.com**  
Rick Kniepkamp (406) 485-2548 or call (406) 939-1632