

2017-2018

DISCOVERING THE MONDak



FREE

Please
Take One

Photo by Jessie Veeder Scofield

A Guide To Attractions, Events & The Rich Heritage Of The Montana-Dakota Territory

Sidney, MT ♦ Watford City, ND ♦ Williston, ND

— And Surrounding Communities —

We're Much More Than Just A Casino!

Hot Machines ♦ All Your Favorite Beverages ♦ Fun



10+
U-1 MACHINES!

- On & Off-Sale Beverages Available
- FREE Tap Beer & Well Drinks for Casino Patrons
- Full Bar & Cold, Cold Beer

WIN Up To \$800
on 20 Poker & Keno Machines!

- ★ Friendly Atmosphere & Service
- ★ Relaxed Lounge Area
- ★ ATM

"Customers are the jewels in our crown"

Open 8 a.m.-2 a.m., 7 days a week
222 S. Central, Sidney
(406) 433-7222 • Fax: 406-433-7221



Welcome To The MonDak!

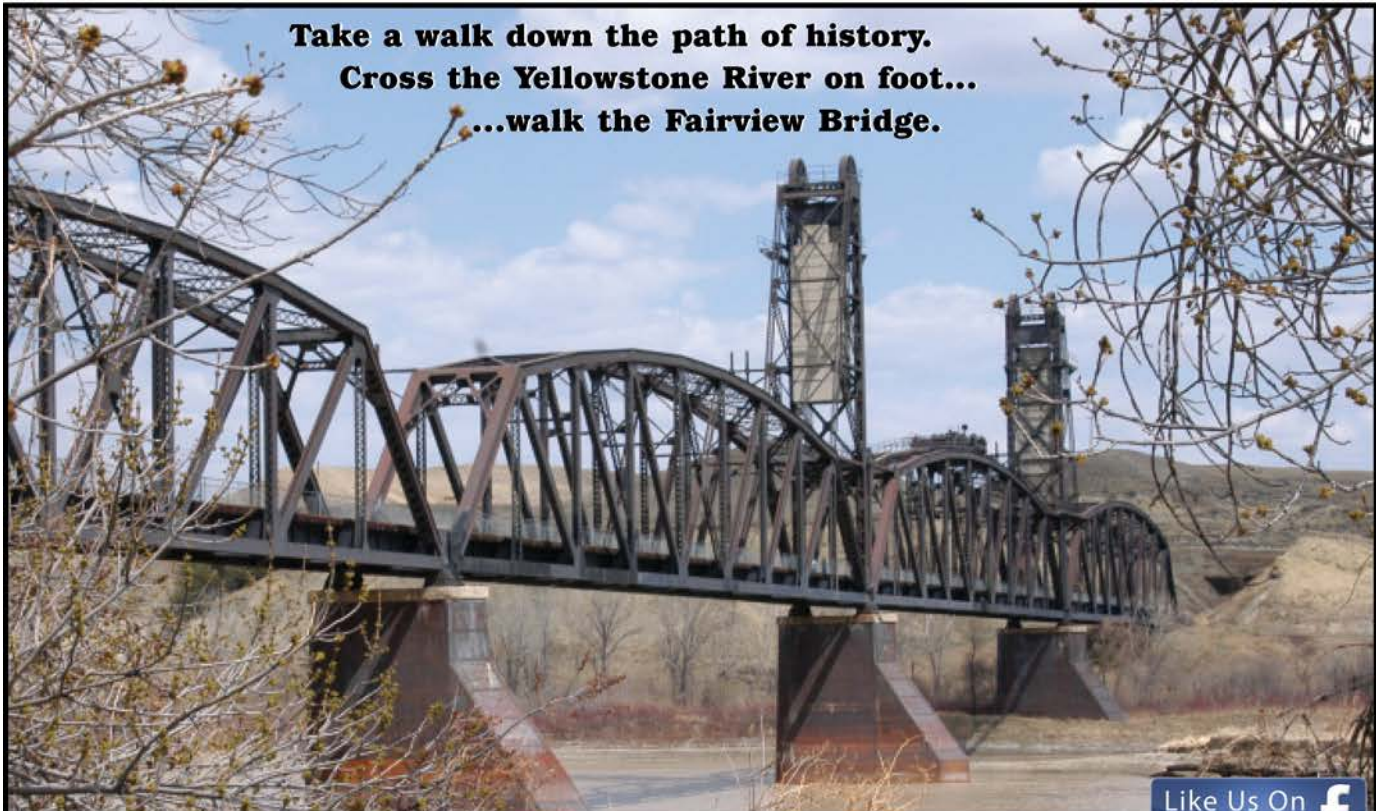
Table of Contents

<i>Alexander, ND</i>	60	<i>Lambert, MT</i>	41
<i>Bainville, MT</i>	31	<i>Maah Daah Hey Trail</i>	70
<i>Buelah, ND</i>	72	<i>Missouri-Yellowstone Confluence Interpretive Center</i>	37
<i>Culbertson, MT</i>	47, 48	<i>Makoshika State Park</i>	21
<i>Epping, ND</i>	57	<i>Richey, MT</i>	42
<i>Grassy Butte, ND</i>	71	<i>Savage, MT</i>	43-45
<i>Fairview, MT</i>	25-30	<i>Sidney, MT</i>	2-20, 22
<i>Fishing Access</i>	23	<i>Theodore Roosevelt National Park</i>	69
<i>Fort Buford</i>	38	<i>Trenton Lake</i>	39, 40
<i>Fort Union Trading Post</i>	36	<i>Watford City, ND</i>	62-68
<i>Hanks, ND</i>	34	<i>Williston, ND</i>	50-56, 58

The Roundup

111 West Main Street
 PO Box 1207 Sidney, MT 59270
www.roundupweb.com
 Office: 406-433-3306 • Fax: 406-433-4114
 Email: Info@roundupweb.com

**Take a walk down the path of history.
 Cross the Yellowstone River on foot...
 ...walk the Fairview Bridge.**



Sponsored by *Friends of the Fairview Bridge*



Welcome To Montana's Sunrise City!

Locals fondly call it the Sunrise City, as this is where the sun first greets Montana. The Sidney area sits alongside the Yellowstone and 14 river miles from the Yellowstone's meeting of the Missouri, it was named in 1888 for Sidney Walters, the young son of a local pioneer family. A beautiful community known for its agriculture and oil industries. It is the largest town in northeast Montana.

Sidney and the surrounding area boasts its beautiful landscape where the lush green prairies and rugged badlands meet. Along with agriculture, Sidney is host to the Elm Coulee Oil Field beginning oil production in 2001 and doubling Montana's oil output in a few short years.

Check out many of the exciting things you will find around the Sidney area: MonDak Heritage Center Museum, The Sidney Area Chamber of Commerce and Visitor Center, Harmon's Yellowstone Agate and Silver, Sidney Country Club, and plenty of lodging, meals, groceries and state of the art medical facilities.



Hair Hair Hair

Planet Hair
& Spa



406-433-4508
109 E Main • Sidney, MT



The Greatest Hair Styles On The Planet!

Hair Extensions • Customized Cosmetics • Fun, Trendy Gifts

Tina, Carla & Raquel..... **Stylists**

Britta.....**Nail Tech**

Rita.....**Massage Therapy**

MONTANA'S SUNRISE CITY

The City of Sidney WELCOMES YOU!

- Pool, Waterslide & Splash Deck
- Walking/Biking Paths
- Skatepark
- Tennis Courts
- 19 Parks To Relax In
- And More!



Come & Stay For The Day!



TREE CITY USA

Air Service

Essential To Eastern Montana



Cape Air Captain Andrew Paluch

Now in its 26th year, Cape Air is one of the largest regional airlines in the United States, annually flying over 686,000 passengers to destinations around the world including: New England, New York, the Caribbean, the Midwest, Montana, Florida, the Bahamas and Micronesia. In Montana, Cape Air operates five daily round trip flights to Billings from Sidney, and two daily flights from Glendive, Glasgow, Wolf Point and Havre. All flights are \$49 each way including taxes, fees and bags. The employee-owned company operates up to 550 flights per day system wide. Cape Air is a codeshare partner with United Airlines in the Caribbean

and American Airlines in the Midwest. In addition, Cape Air has ticket and baggage agreements with most major airlines. Cape Air's unique brand of customer service, MOCHA HAGoTDI,* has earned the airline several accolades, including "One of the Top Ten Small Airlines in the World" by Condé Nast Traveler. The airline has been recognized for outstanding philanthropy in the communities it serves and Cape Air Founder and CEO Dan Wolf was recipient of the Ernst & Young Entrepreneur of the Year™ Award.

* Make our Customers Happy and Have a Good Time Doing it!

Crestwood

Come Join the Good Life



Please feel free to contact our Onsite Manager with any questions or concerns: 406-433-3721 or crestwd@midrivers.com Our Support Service Coordinator is available to Crestwood residents and the public. Call 406-433-4681 for assistance.



Crestwood is a HUD subsidized housing complex for those 62 and older or disabled. We provide a welcoming environment that helps you feel at home in your spacious one bedroom apartment. Close to downtown, you are never far from your loved ones, shopping, or town events. Don't drive? Not a problem. Richland County Transportation comes right to the front door.

410 3rd Ave. SW • Sidney, MT 59270 | Office: Mon-Thurs: 7am - 3pm • Fri: 7am - 11am

Lone Tree Gun Show

A Popular Event For Over 25 Years

One of the most popular events in the MonDak, The Lone Tree Gun Show, will take place August 18-20, 2017 at the Richland County Event Center in Sidney. Hours for the show are 5-8 pm Friday; 9am – 6pm Saturday and 10am – 3pm Sunday. Admission is only \$5 per day with children 12 and under free when accompanied by an adult.

Co chairs Jim and Leann Pelvit and Tim and Brenda Larson offer a quality experience for vendors and attendees alike. The show is operated under the rules and regulations of the Weapons Collectors Society of Montana. All federal, state and local gun laws are obeyed.

The popular show features 160 tables with guns, ammo, coins, knives and sharpeners, antiques and collectibles, fishing gear and more. Each year a raffle is held with the grand prize this year a 204 Thompson Center Rifle with a 6 X 24 scope. Second place will win a hunting knife.

Proceeds from the event are distributed to local non-profit entities. Past recipients include 4-H Shooting Sports, Boys and Girls Club of Richland County, Sidney Trap Club, Salvation Army, Sidney Chamber of Commerce, Hunter Safety, the DUI Task Force and the Richland County Christmas Coalition.

For more information about the Lone Tree Gun show, please visit www.lonetreegunshow.com or call 406-480-5594.



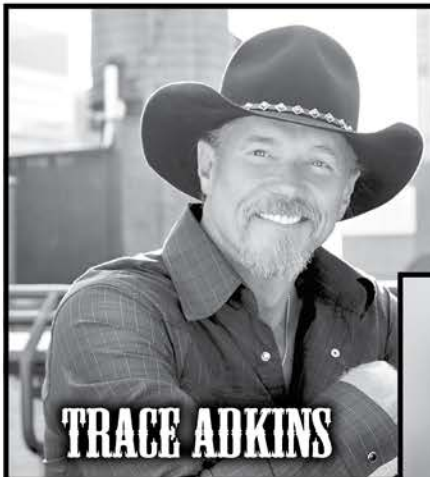
Richland County Fair & Rodeo

"Load 'Em Up & Head to the Richland County Fair & Rodeo!"

August 2-5, 2017

In Concert

Sat, Aug 5th • 7:30 pm



TRACE ADKINS

**See The Rodeo
Thurs & Fri
August 3rd & 4th**

**With Special Guest
Lauren Alaina**



ALL FOUR DAYS

- Carnival by North Star Amusements
- Free Shows Daily
- Many, Many Exhibits
- Tons of Delicious Food

For ticket information
call the fair office at
(406)433-2801 or go online
www.richlandcountyfairandrodeo.org



Friday, August 4th

**Military
Appreciation
Night
Thurs, August 3rd
Next Year's
Fair:
August 1-4**

The Fairgrounds & Event Center are available to rent, call or email for scheduling • www.richlandcountyfairandrodeo.org • jlaron@richland.org

The Show Window of Agricultural Achievement in Eastern Montana and Western North Dakota!

Stay With People Who Care



BEST WESTERN GOLDEN PRAIRIE INN & SUITES

Free High Speed Wireless • Hot Breakfast
Pool & Hot Tub • Fitness Room
Suites Available • Lounge Next Door

820 South Central Ave | Sidney, MT | 406-433-4560



Your Headquarters For: *Griz*  *NDSU* 
12 TAP BEERS! MOST UNIQUE SELECTION OF BEER IN EASTERN MT

TRY OUR BURGER OF THE WEEK!
OR TRY ONE OF OUR WEEKLY SPECIALS!

HAPPY HOUR
4-6PM
\$1 OFF DRAFTS
& 15% OFF APPETIZERS

HOME OF THE "JUICY LUCY"
• APPETIZERS
• SALADS • SANDWICHES
• BURGERS • KID'S MENU
POOL TABLES • DART MACHINE
FOOSBALL TABLES

Mon-Fri: 4-11pm • Sat: 4-11pm • Happy Hour: 4-6pm Nightly | Plenty of Parking in the Best Western Golden Prairie Lot or in the Gravel Lot Behind Super Pumper!



RICHLAND INN & SUITES

• Free High Speed Wireless • Pet Friendly
• Excellent Sundries Shop • Full Hot Breakfast Buffet
• Expanded Workout Facility • Business Center

1200 S. Central Ave | Sidney, MT | 406-433-6400



LONE TREE INN

• Free High Speed Wireless
• Pet Friendly • Lounge Next Door

900 S. Central Ave | Sidney, MT | 406-433-4520

Best Values In Sidney & Surrounding Areas!



The newest exhibit at the MonDak Heritage Center is the extensive Roger Johnson Family Western Antique Gun Collection.

The Hottest Fashions & Footwear

— For Men & Women —

Accessories, Colognes,
Gourmet Teas
& City Brew
Coffee

JZ
Fashion
& Coffee Boutique
113 E. Main ST • Sidney, MT
406-433-5050



MonDak Heritage Center

The Bakken region's premiere museum, the MonDak Heritage Center in Sidney, is the first stop for the community to learn about the past, enjoy the present and plan a future visit to take part in all that the museum has going on. There is always something happening at the MonDak!

The Center showcases thousands of historical artifacts in the Pioneer Town in the lower level of the museum. There, you can experience what life was like for the early settlers of Sidney and the surrounding area in 1910. In addition to a replica of Sidney National Bank and the United States Post Office in Dore, North Dakota, there is a townhouse outfitted with the latest technology of the era, a doctor and dentist office and a homestead shack.

For the art lover, the MonDak Heritage Center hosts a number of annual exhibits, as well as both regional and national traveling exhibits. Each year, the ever popular quilt show takes place in February, adding color, texture and amazing designs to the art galleries. A youth art show, exhibiting student art from the area in grades 7-12, takes place in the spring, and a miniature art show runs November through January. In addition, the permanent collection includes early works of Montana's native son and famed western artist, J.K. Ralston.

Genealogists will rejoice at the wonderful research facility at the MonDak Heritage Center. The Lillian Jensen Anderson History Research Library houses extensive archives, including newspapers, yearbooks and family heritage cards. Researchers can also make an appointment to receive assistance searching Ancestry.com.

As the cultural center of the region, the Center hosts "Music at the MonDak," which brings a variety of musical groups and types to the area. "Movies at the MonDak" allows the opportunity for documentaries and other films to be screened at the venue. Finally, the MonDak Heritage Center holds periodic arts and crafts classes and demonstrations, historical speakers, as well as annual fundraising events, including "Burgers, Brews and Blues" in June, Oktoberfest in October and "Celebrating Chocolate" in February.

Admission to the MonDak Heritage Center is always free, although donations are welcome and appreciated. Public hours are Monday through Friday from 10am to 4pm and Saturday from 1pm to 4pm. The museum is located at 120 3rd Avenue Southeast in Sidney.

To learn more, please call 406-433-3500 or visit the website at: www.themondak.org. You can also find them on Facebook at: www.facebook.com/mondakheritagecenter.



The MonDak Heritage Center has a little slice of the past created on the lower level of the building, giving visitors a peek at what life was like in the area way back when.

Great Electronics From All The Brands You Love!



verizonwireless
Authorized Agent

SONY

Control4
Better. Together.™



ELECTRICLAND

SONOS
THE WIRELESS HiFi SYSTEM



DIRECTV
SATELLITE TELEVISION



(((SiriusXM)))
SATELLITE RADIO



SAMSUNG



dish
NETWORK

Mon - Fri: 9am - 6pm • Sat: 9am - 5pm
410 N. Central, Shops at Fox Run, Sidney | 406-433-4370

The Richland County Fair & Rodeo, Aug. 2nd - 5th "Load'Em Up And Head to the Richland County Fair & Rodeo"

The Richland County Fair and Rodeo officially began in September of 1920 as a humble street fair and has grown to one of the biggest yearly events in the MonDak region. Growing to a large fair and rodeo grounds and event center, the Fair hosts more than 30,000 guests annually. This year the fair will be held from August 2nd through the 5th and is certain to be "fun for all ages".

This year Trace Adkins will be headlining at the fair with special guest Lauren Alaina on August 5th at 7:30 PM. Tickets will go on sale on May 23rd. Charlie Jenkins will be performing on Wednesday, August 2nd in a free concert at 7:30 PM. Other entertainments

will include wrestling duals featuring Team Sidney vs. Team Germany on August 2nd at the Old Commercial Building at 5:30. The PRCA Rodeo will be held on Thursday, August 3rd and Friday, August 4th at 7:30 PM presented by Brookman Rodeo, LLC. Thursday will be Military Appreciation Night and Friday will be Tough Enough to Wear Pink Night.

The North Star Amusements Carnival will open Wednesday, August 2nd at 5:00 PM, Thursday August 3rd at 2:00 PM, Friday August 4th at 2:00 PM and Saturday, August 5th at 1:00 PM. There will also be daily free acts and entertainment throughout the carnival.



Trace Adkins

DELI • BAKERY • FLORAL

REYNOLDS OWN SMOKED MEATS!
 Ribs • Chicken • Pulled Pork • Brisket
 Try the NEW BBQ Snack Sticks & Homemade Jerky





Reynolds
MARKET

Over 1,000 Bottles Of
Save 10% On 6 Or More Wine!

Over 400 Domestic & Craft
Beers! Pick a Six! Mix or Match

ATM & Money Gram Available! Shops at Fox Run • 404 N Central Ave • Sidney, MT | 6am - 10pm Daily | 406-433-2305 • www.ReynoldsMarket.com

Craft Brewers in the MonDak

By Joshua Smallwood

In the humid atmosphere of the Meadowlark brew house, Travis Peterson works among the large fermenters, spending many days at work from 6 in the morning to 11 at night. His Chief Brewing Officer, Tim Schnarrs, a talented brewer with a decade of experience, is studiously at work, hurrying constantly from area to area. Travis Peterson left his job as an engineer on the west coast to come back to his hometown of Sidney where he decided to pursue a passion that he held since high school - brewing. He knew what he wanted to do and although he didn't know perfectly how to go about it, he struck forward. He spoke to brewers who had been in the business for years. He took online programs, and learned about the various conferences in which one can learn about the finer points in the art of brewing. Once he found his in, he found that the brewing community is very close. "Breweries have a great camaraderie", says Peterson. "We are always looking to better ourselves." He purchased and renovated the building on Central Avenue and opened Meadowlark Brewery in 2014. Although he had learned quite a bit about brewing, he found a partnership with the Peltons - Aaron and Angie, who currently lease the public house portion of Meadowlark from Peterson. The Peltons own Stonehome Brewing in Watford City. While they had extensive knowledge of the restaurant business, they were greatly helped by the advice of Peterson in opening their brewery in Watford. The grand opening of the Stonehome Brewing Company was April 26th, after a year and a half of hard

work in getting started. Their head brewer is Kenny Driggers. Another area brewing company is Cross Country Brewing in Glendive operated by the Cross Family of which John and Eliot are the head brewers. Peterson is one of the biggest brewers in the area. He recently included in his equipment a centrifuge, the type of which few exist in Montana, and was very helpful in contacting most of the brewers that attended Brewfest in April of 2017. The sudden influx of these new breweries is certain to bring many connoisseurs to the area and enrich tourism.



Travis Peterson (left) and Chief Brewing Officer Tim Schnarr (right) at Brewfest 2017.

THE DEPOT
Casino
 POKER KENO
HAS PIZZAZZ
 PIZZA & FINE FOODS
 • WE DELIVER •
 Hwy. 16 S, Sidney, MT • 406-433-4650

Fishing Tackle & Bait
 Coolers • Ice • Beer & Pop
 Snack Food
 Fishing & Hunting Licenses
FARM & HOME
 SUPPLY
 809 East Main • Sidney, MT | 406-433-3400

Footers
 PIZZA • SUBS • SALADS
433-SUBS
 616 S. Central • Sidney, MT
 406-433-7827 | Open 10:30am Daily

xango
 Gloria Buxbaum
 Montana XanGo Lady
 For Your Better Health
 Cell: 406-480-9777
<https://www.youtube.com/watch?v=EZ7Ymq4YRBk>

Mucho Si
 Authentic Mexican Food
 Beer & Wine • Catering Available
 Mon-Thurs: 11am - 8pm • Fri & Sat: 11am - 9pm • Sun: 11am - 6pm
 East Main, Sidney, Next To The Roundup | 406-433-2212

GOODYEAR
LEE'S
 TIRE AND SERVICE CENTER
 349 22nd Ave NW • Sidney, MT | 406-488-6636 • 1-800-967-3795

Yellowstone Chiropractic Clinic
 DOT Physicals • Sports Injury Treatment
 Other Injuries & Pain Conditions
 Dr. Ryan Laqua, Chiropractic Physician
 406-433-4757 • 1-866-433-4757
 222 2nd Ave SW • Sidney, MT

Save On Smokes
 Noon - 5pm Daily!
\$29.95 per Carton
 Roll Your Own With Our Machine!
 In The Miller's Corner Building

SAL SERVICES, INC.
 WE REPAIR INDUSTRIAL CONSTRUCTION
ROUSTABOUT
 SIDNEY MONTANA
 406-433-6754
 Fax: 406-433-6755
 2265 S. Central Ave • Sidney

“Stay In Sidney!”

- Microtel Inn & Suites
(406-482-9011)
- Richland Inn & Suites
(406-433-6400)
- Lone Tree Inn
(406-433-4520)
- Best Western Golden
Prairie Inn & Suites
(406-433-4560)
- Wingate by Wyndham
(406-433-3100)
- Holiday Inn Express
& Suites (406-433-3200)
- Candlewood Suites
(406-482-9692)
- MainStay Suites
(406-488-1000)



Sidney, MT

TBID

Tourism Business Improvement District

www.sidneytbid.com

Sunrise Festival Of The Arts

Sidney, MT

As the sun rises on the second Saturday in July many industrious individuals can be seen hurriedly erecting canopies and hauling every description of merchandise into Sidney's Veterans Memorial Park. It is the annual Sunrise Festival of the Arts. For 26 years the scene has played out and will again on July 8. The event will run from 8 a.m. to 4 p.m.

The 2017 corporate sponsor is XTO Energy.

The goal of the Sunrise Festival is to connect artists, crafts persons and authors with potential customers. This years' featured artist is enthusiastic and pleased to be selected. Amanda "Mandy" Heimbuch of Glendive has attended the Sunrise Festival the past six years and has built up a faithful clientele. "It's one of my favorite shows!" she gushed.

She works in many mediums and her website states, "I have an addiction for anything that can be fixed, painted or repurposed into something beautiful to enjoy. I try to incorporate these things in my art, recycling scrap metal to make metal and clay garden sculptures, using scraps of paper to collage a background for my paintings or finding that treasure in the dumpster to use as a display shelf at a show.

The specialty of Country Girl Clay that makes Mandy's work standout are the bright colors. Her favorites are turquoise and combinations of red and teal. Country Girl Clay will provide a

striking yard art piece of her signature clay with metal and ceramic flowers that will be the Grand Prize in a drawing available to everyone who purchases a festival button.

Mandy will also offer a "paint your own pottery" class at the Sunrise Festival. To learn more about the 2017 Sunrise Festival of the Arts contact the Sidney Area Chamber of Commerce at 406-433-1916, visit the Chamber on the net

at www.sidneymt.com or refer to the Facebook page at [Facebook.com/sunrisefestival sidney](https://www.facebook.com/sunrisefestival_sidney).



Amanda "Mandy" Heimbuch

True community bank built on western values

- Local Decisions
- Friendly Staff
- Community-Oriented

For all your banking needs, from personal to business and ag to real estate, we're here to help. It's neighbors helping neighbors with service you can bank on.

Stockman Bank

Montana's Brand of Banking

Proudly serving the MonDak area!

Sidney, Montana: 433-8600

Bakken Brewfest

The Bakken Brewfest is the largest of three fundraisers that the Sidney Chamber of Commerce holds each year at the Event Center. Brewfest is an event where brewers from the Northwest region come to showcase their brews by offering the public a chance to sample different beers and ask questions of the brewers themselves. Blue Rock also provides microbrews, specialty beers that are produced on a mass scale. The event has live music, good food, a merchandise table as well as select sampling and food for those who purchase VIP tickets. Each guest receives a Bakken Brewfest glass for sampling. At the 2017 Brewfest nearly 100 brews were available and it was also the third year firkins, wooden containers full of beer, were tapped during the festivities. The firkin tapping is quickly becoming a favorite event of the evening. This was the sixth year the event has been held, originally started by Cami Skinner and David Seitz, it continues to be an anticipated yearly event. Volunteers turn out after receiving serve-safe certification provided at no cost to them through District II Drug and alcohol, and spend the evening pouring beer, answering questions, and helping with clean-up. The Merchandise table was available again this year, selling keg-style and hydro-flask growlers, as was the VIP room where a special

menu and select varieties of beers were offered to VIP ticket holders; the Photo Brewth, was on-site giving partakers a backdrop and fun props to pose and take pictures. Each year a portion of the proceeds are donated to a community project.



This is your welcome invitation to Sidney, Montana, where friendly people thrive on a long heritage of agriculture, oil and gas exploration, and visitor experiences. This place provides an authentically unspoiled and captivating Eastern Montana landscape as the perfect back drop for outdoor adventure, sporting events, festivals and fairs, or simply to find a slower pace from urban chaos. Come and find your sense of freedom in this frontier community.



Sidney Area Chamber of Commerce & Agriculture
 909 S. Central Ave • Sidney, MT | 406-433-1916 | www.sidneymt.com 

Montana's History

Highlighted by Geological Markers

By Tie Shank

In 2006, Montana's First lady Nancy Schweitzer began the Montana Department of Transportation Geological Roadsign program. That program came to an end a few years ago, but has since been reestablished by first lady Lisa Bullock and Lt. Gov. Angela McLean. The program was designed to educate people on the geological wonders and colorful history of Montana through roadside markers which depict stories through geology.

In September 2014 the Sidney Area Chamber of Commerce & Agriculture announced that Sidney had been selected as the recipient of Montana's newest Geological Marker. Entitled "The Elm Coulee Oil Field: Birthplace of the Bakken Oil Boom." The geo-marker was placed in front of the Sidney Chamber of Commerce building at 909 South Central Ave. in Sidney. Sidney Mayor Rick Norby and Director of Montana Department of Transportation, Mike Tooley were present for the geo-marker presentation by Lt. Governor Angela McLean.

The geo-marker explains the significance of the Williston Basin geologic structure, a "slightly irregular, bowl-shaped depression centered in North Dakota that slowly subsided over hundreds of millions of years. It served as a locus for sediment accumulation, and now has up to 16,000 feet of sedimentary rock in the deepest part of the basin." Within this basin lies the Elm Coulee Oil Field. The Elm Coulee was discovered in 2000, began oil production in 2001 and doubled Montana's oil production within a few years. It is said to be Bakken's richest oil field, covering approximately 750 square miles and expected to produce over 270 million barrels. Nearly 150 million barrels of oil had been extracted by 2013 from the Elm Coulee.

If you'd like to learn more about Montana's historic past through geology, stop by a Montana visitor center, chamber of commerce or government agency office and pick up the Montana's Roadside Geology brochure. The brochure is also available online at <http://www.mdt.mt.gov/travinfo/geomarkers.shtml>.

PARTY CENTRAL & Main Street POPCORN FACTORY

POP on over, the FAMILY FUN begins behind the magenta pink door!

PARTY SUPPLIES!

- GIFT-IN-A-BALLOON
- SCHOOL COLORS
- TABLEWARE IN ALL COLORS
- PARTY SUPPLIES
- BALLOONS
- TUXEDO RENTALS
- NOVELTIES & NOVELTY CANDY

GIFT PACKAGES!



WE SHIP IN TOWN NEXT DAY DELIVERIES!

FRESH MADE POPCORN!

<p>Caramel</p> <ul style="list-style-type: none"> • With peanuts • Salted Caramel • Puppy Chow • Cheesy Caramel • Green Apple & Caramel • Popcorn Balls • More! 	<p>Savory</p> <ul style="list-style-type: none"> • Theater • Cheese • Dill Pickle • Ranch • Bacon Cheddar • BBQ • Honey Mustard • Chipotle 	<ul style="list-style-type: none"> • Salt & Vinegar • Buffalo Wings • Spicy Taco • Pizza Parmesan • Sea Salt • Sour Cream Chive • Sour Cream Cheddar • Southwest Jalepeño • More! 	<p>Candied</p> <ul style="list-style-type: none"> • Fruity Confetti • Cinnamon • Huckleberry Vanilla • Bubble Gum • Cotton Candy • Blueberry & Banana • Monthly Specials • School Colors
---	---	--	---

FACEBOOK US AT PARTY CENTRAL & MAIN STREET POPCORN FACTORY

105 East Main Street • Sidney, MT | 406-433-4FUN | PARTYCENTRALANDPOPCORN.COM

NEW SERVICE

Cleaning Commercial & Custom Rugs

Dry & Wet Mop

Weekly, biweekly or monthly

Any Size!

We'll Pick Up & Deliver



KB'S BUBBLES COIN LAUNDRY & WASH 'N FOLD SERVICE

ATM • Mending Services • Wi-Fi • Open 24/7
Wash 'N Fold Open 7am - 6pm | 115 9th Ave. NE, Sidney
406-433-9274 or call Kelly at: 480-1562
(one block north of Farm & Home on the truck route)

Sidney Country Club

Sidney is home to the only 18 hole golf course in Northeastern Montana, and everyone is welcome to come and play! The course was started in 1929 as a 9 hole course, with volunteers providing the upkeep. The back nine was added in 2000, with a full maintenance team ensuring that the regulation course is in perfect condition. PGA professional Ryan Troxel and assistant Colleen Rau are available to teach lessons, and a fully stocked pro shop provides everything you might need. Kids from 5 to 18 years old are encouraged to take part in the Jr. golf program which runs all summer.

Memberships are available at Sidney Country Club. However, the general public is more than welcome. Green fees are \$32 for 9 holes and \$55 for 18. Carts and clubs are available to rent. Carts rent by the seat at \$10 for 9 holes and \$14 for 18. There is also a driving range, or relax and just hit a bucket of balls.

The club is open from 7 a.m. until dark through Labor Day, shorter hours during the fall, so there's ample opportunity for fun.

Whether you golf or not, the Sidney Country Club provides the perfect setting for lunch or dinner at The Fringe restaurant. The Fringe, offers weekday lunches from 11 a.m. – 2 p.m., unique pub style food Sun. – Thurs. afternoons, and adds fine dining with steaks, seafood, and a variety of different

dishes on the dinner menu Fri. & Sat., from 5 p.m. – 9 p.m. A kid's menu is also available. Crunched for time? Enjoy our lunch buffet offered on Tuesdays & Thursdays. You can also call ahead for take-out. A full bar, which opens at 9 a.m. daily, compliments the restaurant. Groups large and small can be accommodated with privacy, with offsite service also available. Reservations are not required but are strongly encouraged to ensure availability. The Fringe is also open, with limited hours, during the off season.


Sidney Country Club is located on 2250 West Holly ST, Sidney. Call the Pro Shop at 406-433-1894 or The Fringe at 406-433-7460. Check out our website, sidneycountryclub.com, for more information on the facilities or to scan the menu.



Open To The Public!

Welcome To The Only 18-Hole Golf Course In Northeastern Montana!

Beautiful Clubhouse & Facilities




The Fringe

Lunch & Dinner 7 Days A Week (Seasonal)

Outside Catering & Banquet Service

Fine & Casual Evening Dining

Burgers • Steaks • Seafood • Take-Out Orders Welcome!



Sidney Country Club

Golf Course Open Dusk To Dawn

- Golf Pro Shop
- PGA Professional On Staff
- Driving Range & Practice Facility
- Semi-Private Club Memberships Available
- Green Fee, Cart & Club Rentals Available

Call The Pro Shop For More Information | 2250 West Holly • Sidney, MT | 406-433-1894

Sidney's Parks And Recreation Offer Something For Everyone

By Meagan Dotson

Life under the Big Sky definitely lends itself to outdoor recreation, and the Sidney community provides a variety of outdoor recreation during the warmer months. The City of Sidney spent considerable time and energy upgrading Water tower, Quilling's, and Lalonde parks in 2015. Water tower Park received new bleachers, dugout benches, and a new fence, with plans for an eventual ADA compliant sidewalk. Additionally, funding was given through Public Works which provided new dugouts and the Girls Slow Pitch Softball League donated new bases.

Quilling's Park received new playground equipment including an agility based gym for ages two to twelve, new swings, two spring-ride surfers, and popular climbing wall called the Matterhorn. ADA compliant ground cover was also put in which makes the playground more accessible to wheelchairs and strollers and benches give parents and caregivers a place to sit near the playground. Other changes to be made include ADA compliant sidewalks and ramps. While there were lots of changes to the local park, some equipment remains the same such as the stagecoach, spring-ride horses, and small play gym.

Lalonde Park received new swings, a tenspin, and play gym, donated by the Kringen family in memory of Randy Kringen. Because of the Kringen family's generous donation, Lalonde Park is the first of Sidney's parks to be 100% ADA compliant. The city has potential plans to add benches and put in a 350' split rail fence,

which would separate the park from Holly Street.

The Take Part in Our Park fundraiser has raised enough money to cover the cost of an ADA compliant ramp up to the Anderson Pavilion amphitheater at Veteran's Memorial Park, with any additional funding going towards a handicapped accessible seating arrangement. The Take Part in Our Park fundraiser was initiated in preparation for Shakespeare in the Park, July 7th, the Billings Symphony Orchestra, July 8th, and the Sunrise festival of the Arts, July 9th.

Renovations at the South Meadow Softball Complex will take place this summer in preparation for Sidney hosting the 2017 State Softball Tournament. Some of the project goals include building new dugouts and installing new fencing.

In addition to Watertower Park, Lyndale and Moose parks also have baseball fields; other sports related amenities in Sidney parks include volleyball and basketball courts, horseshoe, and soccer accessibility. Tennis courts are located on 2nd Ave SE across the street from Niehenke Skate Park and next to the Arboretum.

Svarre Municipal Pool is another fixture of the community offering swimming lessons, open swim, adult swim, canoeing, lifeguard training, snorkeling, aqua aerobics when available, a splash deck, and waterslides. The pool is also equipped with an ADA compliant lift and approved steps; it is located on the corner of 7th Ave SW and 6th St SW in Sidney.



Park Plaza Motel

**For Reservations
Call 1-877-208-7092**

- Continental Breakfast
- Refrigerators
- Cable/HBO
- Wireless Internet
- Microwaves

601 S. Central Ave. • Sidney, MT
406-433-1520 • Fax: 406-433-5245



USE YOUR CREDIT CARD 24 HOURS A DAY!

MAJOR CREDIT CARDS WELCOME

GAS | OIL | BEER | POP | SNACKS

- FR Clothing
- Fishing Supplies & Bait
- Hardware
- Carhartt & Wrangler
- Lawn & Garden
- C-Store
- Houseware & Cleaning Supplies
- Montana Silversmiths Jewelry
- Oil & Other Auto Accessories



FARMERS ELEVATOR

1281 S Central • Sidney
Open 7 Days A Week!
406-433-1401

Boys & Girls Club Plays Vital Role In Richland County

By Joshua Smallwood

The Boys and Girls Club of Richland County offers a healthy, fun and educational opportunity for children from kindergarten through 12th grade to further continue teaching values while attending an entertaining after-school program. It is a safe place for children to learn and grow. It is managed and staffed by professional adults who are keen on helping children develop into positive role models themselves.

The Boys and Girls Club “offers daily activities of home-work help, arts and crafts, and gym. Also offered are high yield learning activities (hiding learning in fun) and Character Counts! program”.

The Boys and Girls Club is an organization that is over 150 years old and serves 4.2 million youth, is staffed by over 51,000 trained professionals in 4,000 clubs nationwide and in territories and military bases around the globe. In Richland County, the club has relocated around Central School in Sidney multiple times since 2005 and is currently in the process of raising funds for a new building. The Richland County club currently serves approximately 160 youth and has been growing yearly.

Membership is open to youth in Richland County for annual membership dues of \$75, \$125 for family memberships,

although no child is turned away due to inability to pay the dues. Fees for the after school program and related activities are \$10 per week plus another \$5 for any additional children.

During the fall and winter the club is primarily regulated to an after school program, but in the summer, the club offers various camps such as the “Discovery Camp” which is a program that involves field trips, learning about Richland County, photography classes, sports, breakfast, lunch and snacks and various other activities. The Discovery Camp is limited to 40 spots and has a fee of \$150 per child. Other camps include “Nature Camp”, “Creative Camp” and “STEM Camp”.

Richland County communities are amazing and generous supporters of the Club. Through balanced memberships, fee structures, private donations, fundraisers, foundation gifts, local and state grants, and the many volunteer hours spent, BGCRC will continue to grow and provide low cost facilities for any child wanting to attend. Club annual budget is \$600k and maintains debt free operation.

Boys & Girls Club of Richland County is an incorporated 501(c)3 in Montana. Donations to the Club may be tax-deductible. For more information, please visit www.richlandbgc.org or call 406-433-6763.



THE MONDAK HERITAGE CENTER

— SIDNEY, MONTANA —

“Where Art & History Meet”

- Experience cultural and musical events
- Enjoy art and history exhibits
- Learn creative skills in art classes
- Stroll through a historical eastern Montana town
- Shop in our unique gift shop showcasing local artists, jewelers and authors
- Conduct research in the Lillian Anderson Jensen library

Handicapped Accessible | Free Admission | Find Us On Facebook
120 3rd Ave SE • Sidney, MT | Tues-Fri: 10am - 4pm • Sat: 1-4pm
433-3500 | mdhc@richland.org • mondakheritagecenter.org

We're Everyone's “Home, Sweet Home”

- Full espresso bar
- Fresh baked goods
- Special orders
- Large dining area
- Events

**Check
Our Social
Media
For Daily
Deals!**

 /simplysb

 @simplymichaela



Simply
Scrumptious
CAFÉ & BAKERY

406-480-0507
141 7th St SW • Sidney, MT

Rodeo in the MonDak

Rodeo is a popular event in the MonDak region with local cowboys joining world class winners in the quest for the purse of the day.

Following is a list of rodeos you won't want to miss.

PBR Bull Riding: Friday & Saturday, June 2-3, Richland County Fairgrounds, Sidney, MT

Neil Hermanson Ranch Rodeo: Saturday, June 10, 1 p.m., Richland County Fairgrounds, Sidney, MT

Frontier Days Rodeo: 6:30 p.m. Friday, June 9 and 7p.m. Saturday, June 10, Saddle Club Arena, Culbertson, MT

Bakken Barrel Daze: Noon Saturday, June 17 and 10 a.m. Sunday, June 18, Sidney, MT

McKenzie County Fair & Rodeo: 6p.m., Saturday, July 8, Watford City, ND

Wild Horse Stampede: Thursday – Saturday, July 6-8, Wolf Point, MT

Sheridan Saddle Club PRCARodeo: Thursday & Friday, July 27 & 28, Plentywood, MT

Richland County Fair & Rodeo: Thursday & Friday, August 3 & 4, Sidney, MT

Dawson County Fair: Saturday, August 12, Glendive, MT NDRA Finals; September 29 & 30, Watford City, ND

Visit ndrodeo.com and montanaprorodeo.com for more listings and details.



Anna-Marie Balcer rides with the empty saddle horse during opening ceremonies of the Neal Hermanson Memorial Ranch Rodeo.

NICK JONES REAL ESTATE We Know The Mondak Country Well!

Serving Eastern Montana and Western North Dakota since 1973

Specializing In:

- Ranch Properties
- Commercial Properties
- Agricultural Properties
- Homes
- Investment Properties

Truck Route South, Sidney 406-433-4445
Or contact one of our agents at home:

Dennis Wick	406-480-1550
Kristin Larsen	406-480-5139
Justin Jones	406-480-9525
Jerrian Franzen	406-478-3773
Terran Hillesland.....	406-480-0129

www.NICKJONESRE.COM

C-Store, Deli, Catering & U-Haul

Exxon

- 24 Hr Pay-at-the-Pump (Gas & Diesel)
- Catering for all Events
- Check Cashing
- ATM Inside

U-HAUL AUTHORIZED DEALER

Miller's Corner

Mon-Sat: 5:15am - 10pm • Sun: 7am - 9pm • Deli: Mon-Fri: 5:15am - 5pm
2201 West Holly, Sidney | 406-433-4041



Sidney
Glasgow
Malta

The Big Sky Series is made possible in part by the Montana Performing Arts Consortium Presenter Development Program which is supported by grants from the National Endowment for the Arts, Montana Arts Council, and legislative grant from Montana's Cultural Trust, and the Western States Arts Federation.

2017-2018 RECIPROCITY PROGRAMS

We are pleased to introduce the reciprocity program, now between several regional concert organizations. Members may attend each others regular season programs at a cost of \$5.00 per concert with this season ticket. For these communities dates & venues, please visit the Great Falls Community Concert Website: greatfallscommunityconcert.com. Click on Reciprocity Program.

2017-2018 BIG SKY SERIES

**1 SEPTEMBER 18, 2017
MONTANA REPERTORY
THEATER**

**presents: "Raised in the Saddle"
The Phantasmagorical Journey of
a Future Rodeo Queen**

This comedy rolls across the Big Sky state via steam locomotive, following teenage cowgirl Alice Greenough as she encounters a who's-who list of famous Montanans. Alice will need that 'iron will' she's known for, because this train ride will prove every bit as exciting and challenging as sticking to the 1,200 pounds of buckin', snortin', and kickin' muscle that's waiting to greet her at her first rodeo competition!



**3 NOVEMBER 2, 2017
CASCADE QUARTET**

For over three decades, the Cascade Quartet has inspired audiences with their depth of sound and insightful interpretations. With an incredible level of artistry and an irresistible energy, the quartet draws in new and seasoned listeners through creative programming, informative and engaging interactions from the stage, education, and communicating a passion for music in all that they do.



**2 OCTOBER 5, 2017
TWIN KENNEDY**

Twin Kennedy, comprised of Canadian twin sisters Carli and Julie Kennedy, have been making music together since they could talk. Twin Kennedy is known for their sibling harmonies, high energy show and heartfelt songwriting. With Carli on guitar and vocals, and Julie on fiddle and vocals, these twins have been described as "Nothing Short of Awesome!"



**4 FEBRUARY 15, 2018
EAST WEST INTERNATIONAL
PROJECT**

From different parts of the world, each member's instrumental and vocal contribution derives from unique traditions, musical backgrounds, and talents. Exemplified throughout a variety of styles, such as classical/ jazz/ tango/ folk/ pop, these nuances are emoted beautifully and with finesse. Melody is buoyed with lush harmonies, and rhythm is awash with wide chordal counterpoint.



**5 MARCH 29, 2018
LAUREN SHEEHAN**

This "one-woman Americana jukebox" celebrates America with music from the 1850's through modern times. Lauren plays banjo and guitar to accompany her rich and powerful voice, singing blues, ballads, Stephen Foster, Hank Williams, bawdy and silly songs, as well as serious poetic and deeply humanistic ones. Lauren received a Portland Music Award for achievement in folk and has appeared on BBC, NPR with an inclusion into the Library of Congress.



Season tickets for the Big Sky Concert Series are available by contacting any NAN Board Member or the MonDak Heritage Center.

Season tickets: Adults \$50, Senior \$45, Students \$35 and Family \$100.

At the door prices: Adults \$15, Senior \$13, Student \$10.



Join us on Facebook - Northeastern Arts Network

Sidney Sugars Inc.

Vital To MonDak Economy

Sugar beets are those beautiful, leafy plants you see in the fields as you drive through the MonDak.

They remain a vital part of the local economy, with 32,500 acres contracted for the 2017 growing season. Sidney Sugars agricultural manager Duane Peters explained that is fewer acres than last year due to the high tonnage now being seen, and the factory only capable of processing a certain amount of beets in a timely manner.

2016 saw record tonnage again at 33.4 tons per acre and average sugar at 17.6, partly due to the 2" of rain the area received in September. Even though the factory ran great, with higher daily production, a couple of warm spells in January and February meant that not all the beets were processed.

Sidney Sugars will bring back early harvest for the first time since 2001 with digging beginning September 15 in all areas. The early harvest will provide a good indication of beet growth and sugar, while giving employees, particularly those on the pile grounds, experience before full harvest begins about October 1. The early start should provide an earlier finish with campaign.

New agriculturalist James Johnson is hard at work with Kathryn Cayko and Vanessa Pooch providing assistance to growers while ag mechanics Brent and Larry are busy repairing the sugarbeet pilers at all six receiving stations from Terry to Culbertson.

Some modifications are planned at the factory including adding pebble lime, which will help with slicing.

The ag department, and everyone at Sidney Sugars, is looking forward to a successful and safe growing year for all involved in agriculture.



WE HELP KEEP THE MONDAK GREEN!

Services Offered By Valley® at Your Local Valley Dealer:

- Valley Pivot Sales Installation Services & Parts
- Floating Irrigation Pumps Installation & Repair • Pipeline

VALLEY | PERFORMANCE PLUS DEALER

AGRI "WE CAN DO IT ALL! NO SUBS NEEDED."

INDUSTRIES www.agriindustries.com | Licensed in MT & ND

Sidney, MT	Williston, ND	Miles City, MT
1775 S. Central Ave.	3105 - 2nd St. W	2106 S. Haynes Ave.
406-488-8066	701-572-0767	406-234-2309

**WE CAN DO IT ALL!
NO SUBS NEEDED.**

Agri Industries Offers These Services:

- Valley Pivot Sales • Installation Services & Parts
- Floating Irrigation Pumps • Installation & Repair
- Electrical • Pipelines
- Water Well Drilling & Well Maintenance
- Plumbing • Trenching • Boring
- Directional Drilling • Heating & Cooling
- Full Parts Counter

Amana Heating & Air Conditioning
LASTS AND LASTS AND LASTS.

AGRI
INDUSTRIES

www.agriindustries.com | Licensed in MT & ND

Sidney, MT	Williston, ND	Miles City, MT
1775 S. Central Ave.	3105 - 2nd St. W	2106 S. Haynes Ave.
406-488-8066	701-572-0767	406-234-2309

Makoshika State Park

Glendive, MT



Makoshika State Park outside of Glendive is a sprawling, beautiful park in which there is both camping and hiking to be enjoyed. The park is also a hot spot of entertainment, especially in the summertime. Visitors can “picnic, go bike riding or hiking, or watch for wildlife. There’s also photography, archery and folf (Frisbee golf)”. Amenities include a visitor center, flush and valve toilets, grills and fire rings, interpretative displays, an archery range, and an outdoor amphitheater. Visitors are allowed to camp for 14 days within a 30-day period for a fee. The park is open year-round, and seasonal hours include: Memorial Day - Labor Day: 10:00am - 6:00pm Labor Day - Memorial Day: 9:00am - 5:00pm. Payment for any park fees can be made with cash, master card, personal check, travelers checks, and visa. Montana residents are allowed in any state park for free.

JOHNSON

HARDWARE & FURNITURE

— since 1915 — **Do It Best**

“PROUDLY SERVING OUR 102ND YEAR!”

Home Design Center
111 S. Central Ave.
433-1402

- Furniture
- Mattresses
- Appliances
- Gifts/Artwork
- Housewares
- Toys • Paint

Hardware Center
114 W. Main St.
488-1909

- Hardware •
- Plumbing •
- Tools • Electrical •
- Pet Supplies •
- Sporting Goods •
- Firearms •
- Lawn/Garden •
- Cleaning Supplies •

Mon-Fri: 8am - 5:30pm • Sat: 8am - 4pm
www.johnsonhardwareandfurniture.com

SUMMER FUN STARTS AT B&B!

- Pelican Coolers
- Grills & Accessories
- Golf Cars & More!



CannOnball
NEW CANNONBALL BALE BEDS!

See Us For All Your Trailer Sales, Parts & Service



Jenn Tiesen | Manager • 406-480-7332 (Cell)
34940 Hwy 23, south of Sidney by the Flashing light
Office: 406-433-1888

Summer Hours: M-F: 8am - 5pm • Sat: 9am - 1pm

www.bbsalesandservice.com

Sidney Health Center

Sidney Health Center is a not-for-profit community based medical center that has been serving people in the MonDak region for more than 100 years. The passion for caring is shared by the doctors, nurses, and several hundred employees and volunteers. This commitment to service excellence is guided by Sidney Health Center's mission, "to help those we serve achieve their highest level of health and well-being."

Located in the heart of Richland County, the attractive Eastern Montana campus includes an acute care (25-bed) hospital, clinic area, cancer care center, certified sleep center, retail pharmacy and an extended care facility offering a complete range of services from birth through end-of-life. These primary areas are complemented by several outpatient services including radiology, laboratory and rehab services to name a few.

In the last 10 years, Sidney Health Center has invested over \$20 million renovating the facility. These renovations have included the addition of a new inpatient/outpatient surgery department, expanding the intensive care unit as well as transitioning inpatient rooms from semi-private to private.

Additional improvements have included expanding the outpatient cancer care treatment services to include radiation therapy with the addition of a newly constructed vault and cancer care suite. The first of its kind in Montana, Sidney Health Center installed a TomoTherapy Hi-Art radiation therapy treatment system, which is one of the most advanced cancer treatment systems in the area. In 2012, Sidney Health Center's cancer care center was

completed with the addition of a private outside entrance and four chemotherapy/IV therapy infusion rooms allowing all outpatient cancer care services to be centralized in one location, enhancing and streamlining patient care for those going through treatment.

The clinic area is attached to the hospital for convenient access to the clinic pharmacy and outpatient services. Fifteen physicians and specialists are located on campus offering family medicine, internal medicine, pediatric care, radiation oncology, pathology and surgical services including general, orthopedic, podiatric, obstetrics/gynecology and ear/nose/throat. In addition, five mid-level providers, an audiologist and certified registered nurse anesthetists help round out the team. Several specialists visit on a regular basis to see patients in the following categories: cardiology, neurology, ophthalmology, medical oncology, and urology.

As mentioned, Sidney Health Center has a nursing home facility on campus. Extended Care is a not-for-profit long-term care health agency providing various levels of skilled nursing care for elderly and physically disabled residents. The facility offers skilled nursing, intermediate care, respite and short stays, rehabilitation, adult day service, and specialized dementia care. Extended Care's goal is to eliminate the three plagues of long-term care institutions: loneliness, helplessness, and boredom. The staff looks upon each person as unique and constantly strives to meet the needs of the body, mind, and spirit.

For a complete listing of services, upcoming events, and job openings at Sidney Health Center, please visit our website at www.sidneyhealth.org.

**Sidney Health Center is located at
216 14th Ave. SW in Sidney.**



Fishing Access

Montana Fishing Access

Missouri River

Culbertson Bridge Access: 3 mi SE of Culbertson off Hwy 16. Day use only, boat ramp, toilet, interpretive sign.

Lewis and Clark Fishing Access Site: 6 mi SE of Wolf Point off Hwy 13. Day use only, boat ramp, toilet, fishing, hiking, wildlife viewing, interpretive signs, historic bridge.

Snowden Bridge Access: 12 mi N of Fairview and about 1 mi W of the Missouri River bridge crossing. Fishing, camping, boat ramp, toilet.

Yellowstone River

Elk Island: 20 mi S of Sidney on Hwy 16, 1 mile north of Savage, east 2 miles on county road. Fishing, wildlife viewing, boating, photography. Newly developed site at the downstream end has gravel parking area, gravel boat ramp and vault latrine.

Seven Sisters: 11 mi S of Sidney off Hwy 16 near Crane. Fishing, campsite, agate hunting.

Sidney Bridge: 1.5 mi S of Sidney on Hwy 16, then 1.5 mi E on Hwy 23. Boating, fishing, toilet.

Richland Park: 5 mi N of Sidney on Hwy 16 then 2 mi E. Fishing, boating, swimming, hiking, biking, wildlife viewing. Camping with a pass or permit. BBQ grill, fire ring, picnic tables, restrooms, playground.

Sundheim Park: Located on ND 200 4 mi E of Fairview. Camping, fishing, boating, historic bridge.

Diamond Willow: 1.5 mi S of Sidney on Hwy 16, 2.5 mi E on Hwy 23, 7 mi NE on county road, 1 mi N on county road. Day use only, primitive site, hand launch, fishing, boating, wildlife viewing.

North Dakota Fishing Access

Williston Area

American Legion Park (Raums) – 4 mi W of Williston on Hwy 2, 6 mi S on Hwy 85, then 4 mi E.

Lewis And Clark State Park – 16 mi E of Williston on Hwy 1804, then 3 mi S.

Whitetail Bay (Lund's Landing) – 22 mi E of Williston on Hwy 1804.

Confluence Area – 1.5 mi S of Buford on Hwy 1804.

Lewis And Clark Bridge – 4 mi W of Williston on Hwy 2, 3 mi S on Hwy 85, on S side of Missouri River, and E side of Hwy 85. Blacktail Dam – 5 mi N, 5 mi W, 1 mi N of the junction of Hwy 2 & 85.

Cottonwood Lake – 1 mi E, .5 mi N of Alamo.

East Spring Lake Pond – N side of Williston.

Little Muddy River – E edge of Williston.

Tioga Dam – N side of Tioga.

Trenton Lake – S side of Trenton.

West Spring Lake Pond – N edge of Williston..

Watford City Area

Tobacco Garden Creek Bay – 2 mi E of Watford City on Hwy 23, then 25 mi N and E on Hwy 1806.

Arnegard Dam – .5 mi W, 3 mi N, 1.5 mi SW of Arnegard.

Leland Dam – 11 mi S, 8 mi W, 8 mi S, 2 mi SW, 1.5 mi E, 1 mi N of Alexander.

Sather Dam – 11 mi S, 8 mi W of Alexander.

Kent Pelton Memorial Nature Park – SE side of Watford City.

YOUR TOTAL OUTDOOR & TEAM SPORTS STORE!



- Hunting & Outdoor Gear
- Fishing Supplies & Licenses
- Archery Bows & Accessories
- Indoor Archery Range
- Firearms & Much More!

Baseball, Softball, Soccer & Hockey Equipment!

Clothing & Footwear For The Entire Family!

- Columbia • Brooks
- Under Armour
- Merrill • Hoey



MONTANA SILVERSMITHS



Tasty Souvenirs And Gifts!

Mon-Sat: 9am - 6pm • Sun: 10am - 4pm | 440 N Central Ave • Sidney, MT | Shops at Fox Run | 406-433-1800

Paddlefishing Is A Unique Attraction For Fishermen And Tourists Alike

By Meagan Dotson

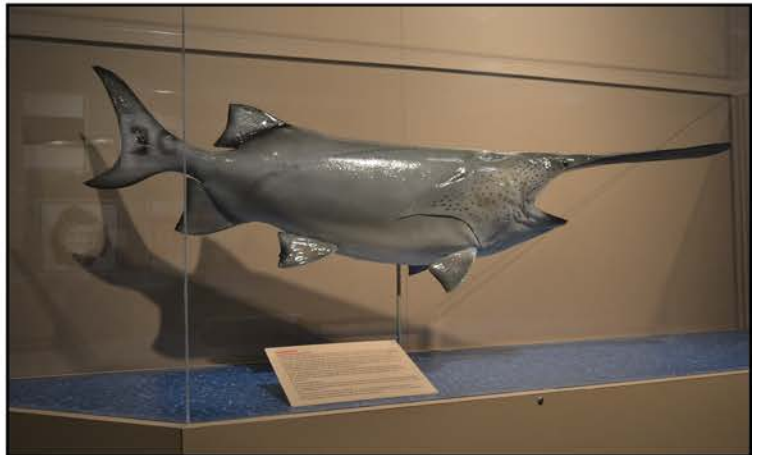
Paddlefishing is an interest that brings people to the area from all over the country as the waters here are ideal, providing the appropriate temperature, water flow, and clean gravel and cobble which make up the fish's habitat. The North American paddlefish, one of only two species in the world, are found in the Missouri, Mississippi, and Yellowstone drainage systems and are only present in twenty-two states.

Paddlefish have an average lifespan of about forty years, though some can live as long as sixty or more years. They are a smooth-skinned, cartilaginous fish, without teeth and have a long, flat snout or rostrum. This rostrum serves to help them find plankton to eat as well as being something of a rudder, assisting the fish through the water as its head and rostrum make up about a third of its body weight. The age of a paddlefish can be determined by its jawbone which has annual rings.

Paddlefishing season starts May 1 in North Dakota and May 15 in Montana. Paddlefish tag may be purchased with a fishing license. The season runs for about two weeks but no longer than June 1st;

each year the Fish and Game Department sets a limit on the number of paddlefish that are snagged and once that limit is reached, the season is over, stabilizing the population.

Montana fishermen can donate the roe and receive free cleaning through Yellowstone Caviar in Glendive. Stations are located at the Sidney Bridge and at Intake. Proceeds from the caviar sales are used for grants that enhance eastern Montana and the fishery.



Explore The Treasures Of Richland County!

Historical Attractions | Friendly Towns | Wide Open Spaces



Above: The brand new 4-H & School Exhibit building at the Richland County Fair Grounds.

Right: The Richland County Court House located in downtown Sidney, MT.



**Richland County Commissioners
Shane Gorder, Loren Young & Duane Mitchell**

Fairview Old Timers Reunion And Summer Festival July 14-16, 2017



For almost 70 years, the third Saturday in July has been set aside by current and former residents of Fairview to celebrate Old Timers Reunion and Summer Festival.

In addition to class reunions, the entire community shows up to enjoy the kiddie parade, a grand parade and a musical program in Sharbono Park. The annual car show highlights the best in the region.

Each year, an old timer, person or place, is honored on the Festival button and during Saturday's festivities. Free admission to the Missouri Yellowstone Confluence Center and Fort Buford is included with your button purchase.

Enjoy Hamburgers in the Park Friday evening and kids' open swim Friday and Saturday nights. A free concert by "High Country Cowboys" will be held Saturday night at East Fairview School and a non-denominational church service in Sharbono Park Sunday morning will wrap up the official festivities.

GREAT COMMUNICATION STARTS HERE!



Globalstar
Satellite Phones



Hand Held Radios



Mobile Radios



Keeping in Touch

Call Larry Today At...
ADVANCED COMMUNICATIONS

Authorized **KENWOOD** Dealer

"Your communication headquarters"

Mobile Radios • Satellite Telephones
Just North of McDonald's • Sidney, MT | 406-433-1659 • Toll Free: 1-866-433-1659

Stop By While You're In MonDak Country

PRIME RIB FRI & SAT!
SEAFOOD • BURGERS • STEAK • SOUP & SALAD BAR!

HAPPY HOUR: 5-7PM MON-FRI
LIVE POKER!



401 Ellery Ave • Fairview, MT
406-742-8110

Dining Room Hours:
Sun-Thurs: 5pm - 9pm
Fri: 5pm - 10pm • Sat: 4pm - 10pm
Saloon & Casino: 10am - 2am Daily

Kick Off the Holiday Season With Fireworks



Fairview Lighting of the Bridge

Fireworks will illuminate the historic Fairview Bridge at 7 pm on Saturday, November 11, 2017.

Sundheim Park is a wonderland of huge lighted ornaments beginning at 4 pm. A visit from Santa is a highlight, horse and wagon rides provide entertainment for young and old and live music warms up the night.

It's a great evening to enjoy a cup of steaming hot chocolate, mingle with friends and neighbors and be awed by the spectacular fireworks.



Elk River Printing *Commercial Printers*

424 2nd St NW - Sidney, Montana 59270 - 406-433-4375

Quality Offset & Digital Printing • Graphic Design • Oversize Printing
• ALL Oilfield and Office Printing •



*Welcome! Enjoy the Wealth of History
our Mon-Dak Territory has to Offer!*

celebrating

38 YEARS

1979 - 2017

elkriver@midrivers.com

Fairview Bridge

Located East of Fairview, MT



The Fairview Bridge, located 4 miles east of Fairview, MT, spans the Yellowstone River in North Dakota. Like the Snowden Bridge, it is also a vertical lift structure for rail and vehicular traffic. However the lift span cannot be moved. The only time the "lift" spans on the bridge were raised was in 1914 shortly after construction as part of a plan by the Great Northern Railroad for its never-completed Montana Eastern Railway. The bridge, unused since 1986, stretches 1,320 feet across the Yellowstone River and hangs about 100 feet above the water.

The bridge adjoins the only tunnel in North Dakota. Con-

struction crews built the 1,458-foot long Cartwright Tunnel in 1912 and 1913, doing the digging by hand. Horse and mule-drawn scrapers and blasting powder were used in building the approaches.

The bridge is a wonderful walk down the path of history, with a walking surface and fencing making the bridge safe and enjoyable. A ramp and parking area provide accessibility to everyone.

For more information visit the Fairview Chamber's website at <http://www.midrivers.com/~fairview/bridges.html>.



Food, Fun And Cash!

- **Food That Tastes Like Home**
Broasted Chicken, Burgers & More
- **7 Big Screen TVs**
- **Win Up to \$800 In Our Quiet Comfortable Casino**
(off sale available)

Easy To Find...Hard To Leave!

HOTEL ALBERT
Lounge & Casino
419 S. Ellery • Fairview, MT | 406-742-5164

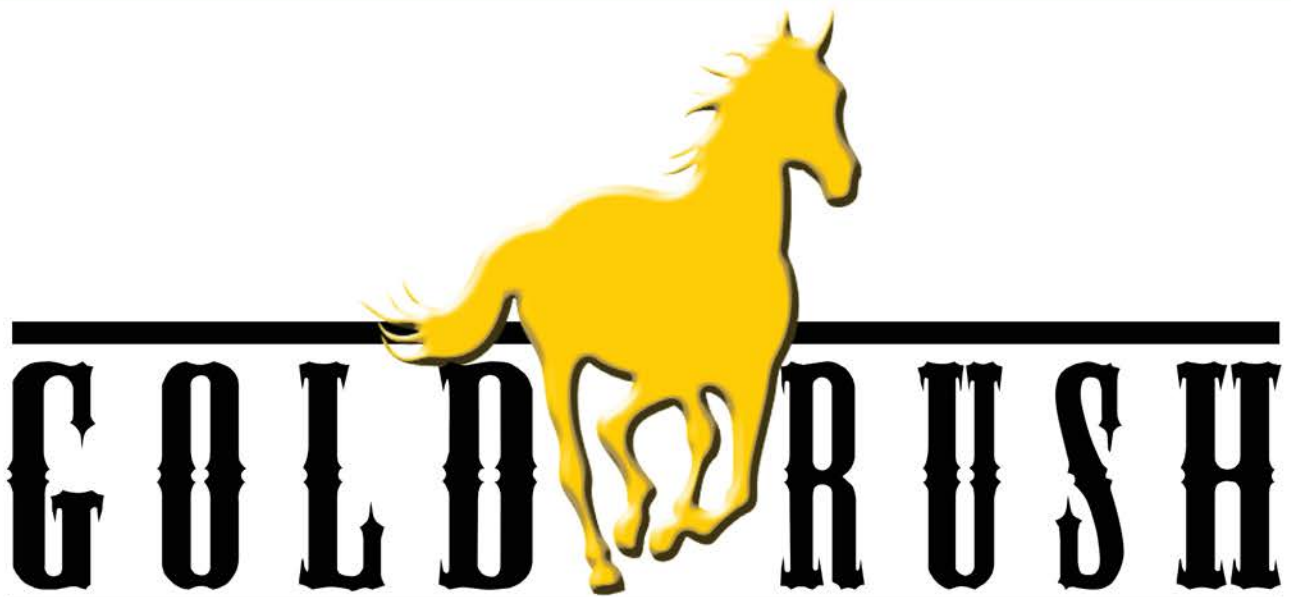
Snowden Bridge

Located North of Fairview, MT



The historic Snowden Bridge spans the Missouri River ten miles north of Fairview, MT. Used until 1986, it was likely the only bridge left in the country that accommodated both rail and vehicular traffic. It is also one of the few vertical-lift bridges in the country. This bridge differs from the common drawbridge in that an entire section will lift to allow riverboat traffic to pass under the bridge. 1935 was the last time people raised Snowden's nearly 300-foot span. This allowed passage for a freight boat carrying materials for Fort Peck Dam. Engineers designed the most unusual aspect of the bridge, the lift span, so counter weights and accompanying machinery could be moved to other sections of the bridge should the navigation channel shift.

Snowden has a sister bridge that spans the Yellowstone River near Fairview.



CASINO & LIQUOR STORE

504 South Ellery Fairview, MT | Lounge: 742-4653 • Office: 742-4654 | Open 10am - 2am Daily

Fairview...the Heart of the Yellowstone Valley.

Fairview Old Timers Reunion & Summer Festival - 3rd Weekend in July



Gazebo in Sharbono Park



Sundheim Park



Fairview is the Sugarbeet Capital of MT & ND



Fairview Pool & Splash Deck



Playground in Sharbono Park



One of the Floats During the Fairview Old Timers Festival



EST. 1972
POWDER KEG

Family Dining
Open Tue-Fri:
4:30pm
Sat & Sun: 2pm

Soft Ice Cream!
Pizza, Burgers & More

Fairview • 406-742-5180



406-742-5224

416 S.
Ellery, Fairview
406-742-5224

Fairview,
Montana

MONDAK
FAMILY CLINIC

An Outreach Service of
SIDNEY HEALTH CENTER

M-TH: 8:30am - 5pm • FRI: 8:30am - 12pm
742-5261 | 304 Ellery Ave • Fairview, MT



Merchants Bank

FDIC  **LENDER**

Mon-Fri: 9am - 4pm

216 S. Ellery Ave • Fairview, MT
406-742-5203

N.L. NEU 

CONSTRUCTION, INC.

Oil Field Roads & Locations
Reclaim Work • Gravel & Scoria Hauling

Fairview, MT
406-742-5549
neuconst@midrivers.com

HURLEY'S
OILFIELD SERVICES

- Potable Water • Sewer System • Loaders
- Communications • Backhoe • Trucking
- Skid Houses • Porta Potties

Dispatch: 701-844-1234 • Fairview, MT

Mon-Kota, Inc.
Fertilizer & Irrigation
Sales & Service

Fairview, MT • 701-844-5300



Reinke
MORE RIGHT THAN RAIN

Fairview Community Foundation

Fairview, MT

Fairview Montana, a small town with a colorful history, has undergone many changes in the many decades since its founding. Fairview Community Foundation is intent on exerting life into the town through fundraisers, events, and programs catering to youth. Their mission is to “enhance the quality of life within the Fairview, MT and Fairview, ND community and surrounding areas”.

The 2017 Sugar Valley Hoopfest will be held July 12-14 in Sharbono Park. Participants can register for the 3 on 3 Basketball Toussrnament (Street Ball) by visiting the Fairview Community Foundation website at fairviewcommunityfoundation.org Cost for the tournament is \$75 per team. Winners of each age division will receive champion shirts and have an option of riding on the Fairview Community Foundation float during Old Timer’s parade that Saturday at noon. For more information contact Laurie Schlothauer at 406-747-3539.



WELCOME TO FORD COUNTRY!

**WE DON'T MEET THE COMPETITION...
WE MAKE THE COMPETITION!**



Excellent Selection of New & Used Vehicles!

See Us For Sales & Service!



“Experience the Eagle Country Difference!”

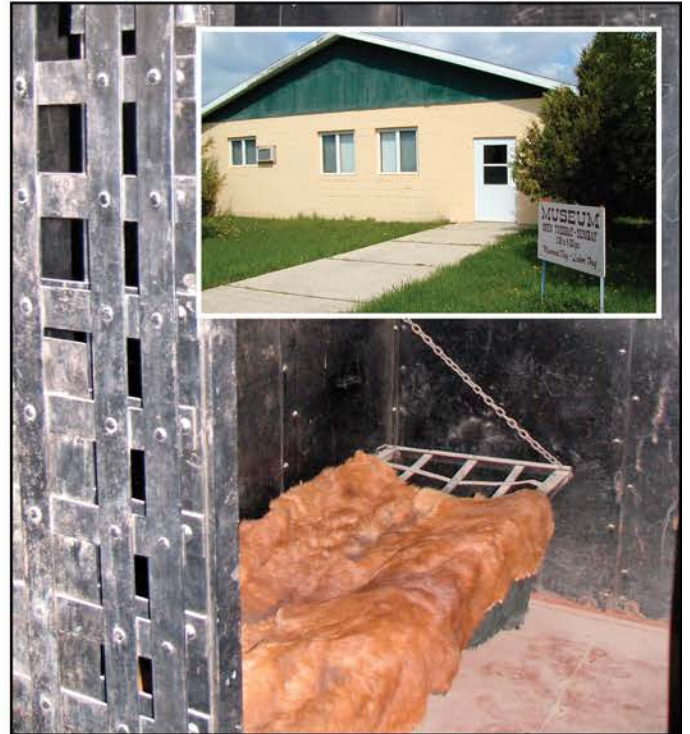
215 East Main • Sidney, MT | 433-1810 or 1-800-482-1810
eaglecountryfordsales.com

Pioneer Pride Museum

Bainville, MT

The Pioneer Pride Museum located in Bainville, MT has an open area that allows for easy viewing of each of the displays. The museum features rooms furnished in pioneer days style. Two of the featured attractions include the old jail cell from Bainville and a 1920s fire truck. The museum celebrates local history through annuals and various displays.

Pioneer Pride Museum is open from Memorial Day-Labor Day; Tuesday-Sunday from 1:30-4:30 p.m. Free will donations will be accepted. For more information call Rochelle at 406-769-3091.



Betty McGuire
- Broker -



Leif Anderson
- Broker/Owner -



Stasia Creek
- Sales Person -



Mary Martin
- Sales Person -

Buying? Selling? We've Got You Covered!

- Homes • Ranchettes
- Agricultural Land
- Investment Properties
- Commercial Properties
- Commercial & Residential Lots



REAL ESTATE IS OUR BUSINESS!

406-482-4480 • 1-888-482-4480 • Fax: 406-482-5836

120 2nd Ave. SW • Sidney, MT | Mon-Fri: 9am - 5pm

Saturday & Sunday By Appointment

www.beagleproperties.com • beagle@beagleproperties.com

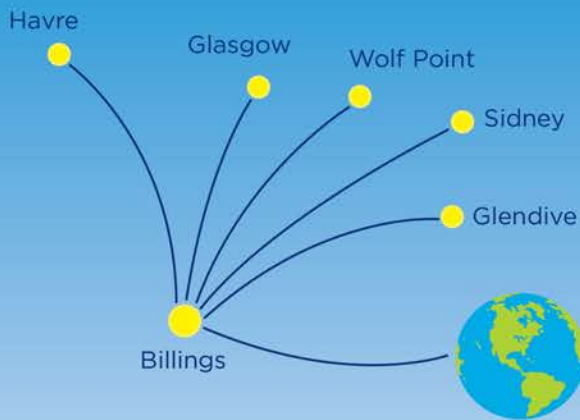
Beagle
PROPERTIES INC.

The world awaits. (You don't.)



Next time you travel, hop on one of our fast, daily flights to Billings Logan International for easy connections to wherever you're going. And enjoy the ride.

\$49^{*}
from each way



capeair.com 800-CAPE-AIR

*Including all taxes and fees. Fares are subject to availability and other conditions. Fares may change without notice, and are not guaranteed until ticketed.



**120 2nd Ave SE • Sidney, MT
406-433-4583**

- Mark Anthony Kuylen** Owner/Stylist
- Monica Reuter** Stylist/Pedicurist
- Hailee Moore** Stylist/Pedicurist
- Kimberly Lange** Stylist/Pedicurist
- Cynthia Vickers** Stylist/Pedicurist
- Sharon Carlson, LMT** Massage Therapy
- DeAnna Damm** Nail Technician

**WELLS
FARGO**

The Next Stage®

Sidney

101 2nd Avenue SW
(406) 433-2321



wellsfargo.com

© Wells Fargo Bank, N.A. All rights reserved. Member FDIC. AS-2866 8767

Meet Your Friends at the Elks Club!

Fun & Friendly Atmosphere

- Banquet Facilities
- Meeting Rooms
- Pool Table • Darts
- Poker & Keno Machines

*Become an Elks
Member & Enjoy
Family Fun!*

**Happy Hour & a Half
Mon-Fri: 5pm - 6:30pm**

Sidney Elks Lodge | BPOE #1782
123 3rd St. SW, Sidney
Open at 1pm Mon-Sat | 406-433-2406



FABULOUS FOOD FOR THE WHOLE FAMILY!

- **Sunday Breakfast Buffet 10am - 2pm**
Soup & Salad Bar Plus Lunch Menu Available
- **Saturday Steak Nights 5-9pm**
- **Catering On & Off-Site**

*Check Our Facebook Page For
Menus & Updates!*



Kat's Kitchen

123 3rd St SW • Sidney, MT
406-630-2608 • Check Us Out On 

Pioneer Trails Museum

Hanks, ND

The Pioneer Trails Museum in Hanks, ND is located in the former school building. A one-room country school was also moved onto the grounds, along with the depot from Zahl and a cook car from the threshing days. Visitors can also see antique machinery and vehicles, displayed in nearby Quonset.

In the old school house, which at one point had students from grades 1 through 12 in attendance, people can look down into what used to be a gym. The old gym now contains a homestead shack moved in from a few miles north. Visitors will also see an old general store from the

early 1900s. A special exhibit showcases a loom from Denmark used for

weaving rugs.

The museum is open every Sunday from 1-5pm from Memorial Day to Labor Day. There is no admission charge. However, individuals may purchase a year membership \$2 per person or \$5 for a family.



Pictured at left is the chapel. At right is the view to the old gym floor of the school.





Nutt- n Better Ice Cream Shop

212 2nd St S.E. • Sidney, MT
(406)433-4232

Featuring Blue Bunny hand-scooped ice cream & novelties

Open: June - August: 11:30 - 9pm Daily

East-Mont Enterprises Inc.

608 E. Main • Sidney, MT
Wholesale Distributors
406-433-2910
Locally owned & operated

**Candy • Paper Goods
Cleaning Supplies and More
Popcorn, Nachos, Sno-Cone
& Cotton Candy Machine
Rentals**





BLUE ROCK PRODUCTS

**ENJOY
A GOLD REFRESHING
TASTE
OF THE MONDAK!**



Choose Your Recipe

PICO GUACAMOLE

Pico de gallo, guacamole, creamy buttermilk ranch, white cheddar, lettuce

SWEET BBQ BACON

Sweet BBQ sauce, applewood smoked bacon, grilled & crispy onions, white cheddar

MAPLE BACON DIJON

Bacon with maple seasoning, dijon mustard, grilled onions, white cheddar & lettuce

Choose Your Protein

100% 1/4LB BEEF

or

BUTTERMILK CRISPY CHICKEN

or

ARTISAN GRILLED CHICKEN

Choose Your Bun

ARTISAN ROLL

or

SESAME SEED BUN

Make Yours A Meal!

ADD FRIES & A SOFT DRINK

SERVING BREAKFAST ALL DAY!



Open at 6am | 406-433-1983 | 1550 S Central • Sidney, MT

Fort Union Trading Post

Located 25 miles southwest of Williston, ND

Built near the confluence of the Yellowstone and Missouri Rivers between 1828 and 1867, Fort Union Trading Post was the center of the trading economy for the Northern Plains. During this time Fort Union traders co-existed civilly with Assiniboine, Crow, Cree, Ojibwa, Blackfeet and Hidatsa Indians. Indians traded furs and hides for iron tools, guns, blankets and other manufactured goods. The site is operated by the National Parks Service, which partially reconstructed the post to its current appearance. This historic site invites visitors to investigate life as it was in the mid-19th century.

Fort Union is situated 25 miles southwest of Williston, ND via Highway 1804 and 24 miles northeast of Sidney, MT via Highway 58.

Fort Union is open year-round. The hours from Memorial Day to Labor Day are 8 am until 6:30 pm CDT, while the hours for the rest year are 9 am until 5:30 pm CDT.

The site also offers special events free to the public as follows:

June 15-18 is the Fort Union Rendezvous, which is a 19th Century fur trade fair. This includes a variety of period arts, crafts and music.

August 5-6 is the Indian Arts Showcase, which provides demonstrations of traditional Northern Plains Indian accouterments, crafts and music.

September 2-4 is Living History Weekend, where re-enactors portray American Fur Company employees and American Indians of Fort Union Trading Post.

There is a Blacksmith Workshop in September (exact date to be determined), where participants can learn the basic techniques of blacksmithing.

For more information, please call 701-572-9083 or go to www.nps.gov/fous.



Builders FirstSource
(Formerly Pro-Build)

ONLY THE NAME HAS CHANGED
Same Great Products...Same Friendly,
Knowledgeable Service!

See Us For All Your Remodeling And Building Needs!

- Lumber • Kitchen Cabinets • Paint • Hardware • Plumbing
- Electrical • Flooring • Millwork • Computerized Kitchen Design
- Decking • Roofing • Power Tools




Builders FirstSource
ProBuild, LLC


100 14th Street SE • Sidney, MT
406-433-2012 • www.blr.com
M-F: 7am - 5pm • Sat: 8am - 1pm

While in the area visit
Fort Union & Fort Buford
We support these & other historical sites
on the Lewis & Clark Trail


Fort Union Trading Post



Fort Buford



Loyal Order of Moose
Williston Lodge No. 239
101 West 2nd Street
Williston, ND • 701-572-2342



Confluence Interpretive Center

Located ½ mile east of Fort Buford

The Missouri-Yellowstone Confluence Interpretive Center, which was an addition to the area in 2003, tells the story of the Confluence of two mighty rivers. The location of the building provides a similar view that Lewis and Clark would have enjoyed as they passed through in 1804 and 1806.

The permanent exhibit, "Trails, Tracks, Rivers & Roads", explores the geographic and geologic past of the area and the impact made by people arriving by all means of travel.

There is also a walking path which overlooks the Confluence. The path includes a telescope and several interpretive signs throughout.

Along with the exhibits, the Confluence Center also includes a meeting room, rotunda and an open plaza facing the Confluence. The meeting room is available for use during and after operating hours. Equipment is available at no charge, including a slide projector, overhead, screen, easel with white board, public address system and a coffee percolator. The rotunda and open plaza are available to groups after operating hours only. To rent or book a room for use, you can contact the Confluence Center at 701-572-9034.

The Confluence Interpretive Center also offers classes and events for the public to enjoy. The Confluence Quilters and the

Confluence Scrapbooking meet at the Interpretive center and welcome any level of quilter or scrap booker to join and learn. The History Book Club also meets at the Interpretive Center to discuss the book of the month, and the public is welcome to join at any time. Check out the Fort Buford State Historic Site/Missouri- Yellowstone Interpretive Center Facebook page for the many concerts and other activities that are held throughout the year. For more information call 701-572-9034.

Located just 22 miles southwest of Williston, the Missouri-Yellowstone Confluence Interpretive Center is open year-round. It is considered part of the Fort Buford State Historic Site, which is managed by the State Historical Society of North Dakota.

From Memorial Day weekend through Labor Day hours are 9 am – 6pm CDT daily. The remaining part of the year the Interpretive Center is open 9 am – 4 pm CDT Wed – Sat and Sunday from 1 – 5 pm CDT.

Admission is \$5 for an adult, \$2.50 for a child (ages 6-15), and children 5 and under are admitted free. The fee also covers admission to the Fort Buford State Historic Site, located ½ mile west of the Confluence Center.

GREAT FAMILY DINING • DOWNTOWN SIDNEY

- All Day Breakfast
- Famous Burgers
- Mexi Mondays



Sunny's
Family Restaurant
"It's Always Sunny at Sunny's!"

Monday - Saturday 5am - 3pm
 Friday & Saturday Midnight - 5am
 Sunday 5am - 2pm
 102 E. Main • Sidney, MT • 406-433-1839

Fort Buford

Located on Highways 1804 & 58, near Williston, ND

Fort Buford, which commanded the Missouri-Yellowstone confluence, served as a major link in the American military strategy of the 19th century. Established on June 13, 1866, the fort eventually housed six companies of infantry and cavalry. Units stationed at the post included the 6th Infantry, and the Black 10th Cavalry and 25th Infantry. African-American servicemen, called "buffalo soldiers", were stationed at Fort Buford from 1891 to 1895. These soldiers policed the international boundary, guarded railway construction crews and provided escorts for steamers and wagon trains. Area settlement in the 1890s ended Fort Buford's usefulness and it was abandoned in October of 1895.

Many famous frontier individuals are part of Fort Buford's history. Indian leaders detained as prisoners of war included Chief Joseph, Gall, Crow King and Sitting Bull. Yellowstone Kelly, a scout, and Colonel William B. Hazen were also residents of the Fort.

A major recent addition to Fort Buford is the reconstructed 1870s Army Barracks. A permanent exhibit has also been added in the field officers' quarters. Titled "Life By the Bugle" the exhibit features original artifacts from Ft. Buford that display the life of an officer and the women of the fort. The barracks

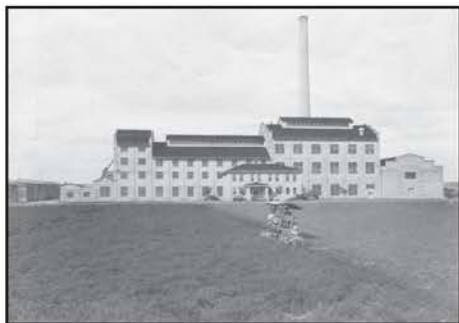
are furnished with historically accurate furnishings and artifacts.

Two original buildings, the powder magazine and the office of the guard building have been restored.

On May 17, 2014 a Masonic site was dedicated by Eureka Lodge #135 PHA F & AM and Yellowstone Lodge #88 AF & AM on the west side of Fort Buford. The building houses information on Masons including Lewis & Clark, U.S. presidents and Masons who were in the area in the 1880s. It is open to the general public. The Buffalo soldier horse statue created by metal artist Jim Dolan, was dedicated at the site in 2016.

In July, the 6th Infantry Reenactment Group holds an encampment at Fort Buford. A walking trail has been completed from Ft Buford to the Cemetery. Every October a Cemetery Walk is held to share the stories of those spirits that remain at the fort.

Fort Buford is located near Williston, ND on Highways 1804 & 58. The fort remains open from May 16 through September 15 from 9 am until 6 pm daily CDT. Admission price of \$5 for adults and \$2.50 for children, and free for children under 5 includes entrance to the Missouri-Yellowstone Confluence Interpretive Center. Bus and school group rates are available. For more information, contact 701-572-9034 or 701-328-2666.



Sugarbeets have been part of the history of the Lower Yellowstone Valley for 100 years. We're proud to have been involved for over 90 years. We look forward to the new frontiers in irrigation and agricultural innovations throughout the MonDak Area.



Sidney,
Montana

Sidney Sugars
INCORPORATED

There's a Treasure that awaits you at the



*260 Fun & Exciting
Slots Waiting to Pay You!*

Just 20 minutes NW of
Williston ND
1 mile west of Trenton ND

• 24/7 • ATM • Café • Beer • Check Cashing

1-701-572-2690



***Our New 22,000 sq. ft. Casino
will be OPEN July 2017!***

Over 400 Slots to enhance your gaming experience!



Plus you're just minutes away
from beautiful Trenton
Lake for fishing, swimming,
picnics, camping, and
water sports.



Is Lady Luck on your side?



Trenton Lake Recreation Area

Trenton, ND

By Joshua Smallwood



On a pleasant day, you can turn off on 145th Road NW in Trenton, North Dakota and follow a shady, tree-lined road. There, amidst the shade of the mighty trees you may even forget for a moment where you are, having left the highway traffic behind. It is almost as if you have driven into a Walt Whitman poem. The signs, however, will lead you to a sprawling expanse of greenery broken only by a pleasant dirt road and small groves of trees. Here you will see a welcoming sign that reads, "We Welcome You To Trenton Lake". You have reached Trenton Lake Recreation Area. Continue along and you will find a small ticket office - look beyond and you will see camper spaces, and beyond that, Lake Trenton.

Here you can fish or sit on the bank of the lake and picnic, or build a fire pit in one of the many shelters that dot the area. You can play basketball at the outdoor court, or if you have children, watch them play on the jungle gym. Other activities include volleyball, miniature golf, horseshoes, and a pavilion well-suited for company picnics or birthday parties.

During the camping season which runs from Memorial Day to Labor Day, amenities include RV sites with electricity, sewers, showers, tenting and outdoor restrooms.

For marine activities there is a boat ramp and a dock and plenty of room for fishing. Enjoy a day or a weekend at Trenton Lake Recreation Area for a lot of fun in practically your own backyard. For inquiries, please call (701) 572-8317.

The Finest Selection of:



Handmade Leather Goods & Native American Crafts, Bead Work & Jewelry!

Vape/E-Cigarettes & Accessories, Wholesale Cigarettes, Chewing Tobacco, Vape Juices, Hookah Pens & Cigars

We Also Have:

Pop • Ice Cream • Coffee
Hot Chocolate • Cappuccino
Sandwiches • Fresh Popcorn

And Don't Miss Our In-Store Specials!

Talon Smoke Shop

701-572-5110 • Hwy 1804 - 1 Mile West of Trenton, ND (Near Fort Union & Fort Buford)

MON-SAT: 10AM - 8PM CT

SUN: 12-6PM CT

Lambert Historical Society

Lambert, MT

With hard work and dedication, the citizens from the Lambert area opened the Lambert Museum in 1977. The museum's historical exhibits depict the town's early beginnings. It also honors former Montana Governor Donald Nutter, a Lambert native born in 1915.

The museum showcases the Lambert area's heritage through various memorabilia. The saddlery display includes a saddle from 1930 and a locally made harness dating back to 1917. Brands decorate the museum walls. The Early Media exhibit includes items from Lambert's original printing office. The museum also features Cheyenne Country, which displays authentic Native American-made items such as headdresses, necklaces and moccasins. Citizens are particularly proud of a piece of artwork created by local artist Pamela Cayer Drewry that depicts the Three Buttes, a nearby landmark. Visitors can also inspect a working antique weaving loom, used to create rugs.

The Historical Society also added the Burgess Garage, located across the street from the museum, to the displays. The garage features a Country Craft Store with a variety of items made by local artisans, a second-hand store and

many other exhibits from the museum including a dinosaur bone display, old-fashioned buggies and sleighs along with antique machinery. The Burgess Garage is a Montana Historical Site.

Members of the Society are taking pictures and cataloging every item in the museum and putting this information into a database. In the near future, museum officials will have the capability to print these pictures and information for people on request.

The museum is located in Lambert, MT, off Highway 200 and is open Tues. and Thurs. 10 am – 3 pm from May-ish to September. Free will donations are accepted.

For more information contact Rob Knotts at 406-774-3778 or Pat Torgerson at 701-774-3744



A Meilicke tabular calculator dates back to the early 1900s.

TAKE HOME A REAL SOUVENIR OF THE MONDAK!



Agriculture is Our #1 Industry!

• TOYS • BOOKS
• CLOTHING • TOOLS & MORE!



TRI-COUNTY IMPLEMENT

2429 W. Holly • Sidney, MT | 406-488-4400 • 1-800-624-6540 | Visit our web site at www.tri-cnty.com

Richey Historical Museum

Preserving The History Of A Small Town

A desire to preserve the heritage of the community, local culture and families established the Richey Historical Society in 1970. Focused on homesteading families of the area, the community's collection of items dating to the early twentieth century gradually expanded. The groups' hope of creating a local museum was realized in 1973 when the town of Richey purchased the museum's first building. The Richey Museum celebrated its grand opening on October 5, 1973. The Museum and Historical Society now consist of seven buildings and proudly display over 10,000 articles documenting the local history.

The museums expanse of items has all been donated by local families and businesses, including the five buildings added after the purchase of the main building. The outlying buildings include a homestead shack, a mercantile, the Lisk Creek School, the First National Bank of Richey, the Richey jailhouse and the most recent edition, an outhouse. Unique to the Richey museum are items and artifacts that once belonged to homesteaders of the area and businesses of the small community. Visitors to the museum can expect to find items ranging from a homestead kitchen complete with a coal cook stove, clothing from years gone by, the Richey Theater stage curtain and the printing press from the Richey Pilot.

Visitors travel to the Richey Museum from across the United States, coming to the museum to learn about their family history, and visit the area where their relatives lived. With all the local

items in the museum, visitors looking to make family connections are likely to find something that once belonged to relative. The small town museum preserves the local history and family history of the area.

The Richey Museum and Historical Society will be open Memorial Day thru Labor Day, Tuesdays and Thursdays from 1-4 p.m., or thru appointment by contacting Wanda Zuroff, 406-773-5825.



Specializing In Fire Resistant Clothing

- **FRC Shirts, Pants, Sweat-shirts, Jackets/Coats, Bibs/Coveralls & Extras**
- **Work Boots, Gloves, Socks**
- **Hard Hats**
- **H₂S Monitors**
- **Honda Generators & Pumps**
- **Custom Embroidery**



FR CLOTHING & BOOTS



Wrangler



JEANS, SHIRTS & BOOTS



Mon - Fri: 6am - 6pm • Sat: 8am - 1pm
2221 S. Central, Sidney • 406-433-6757

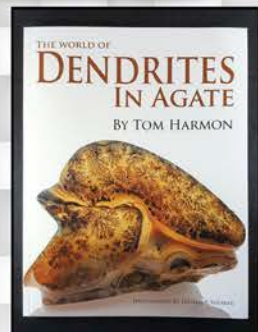
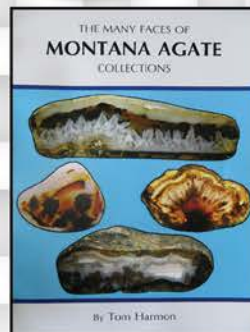
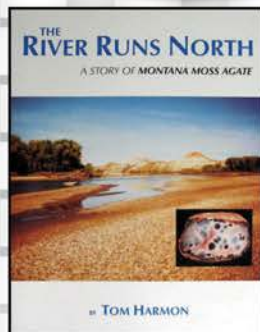
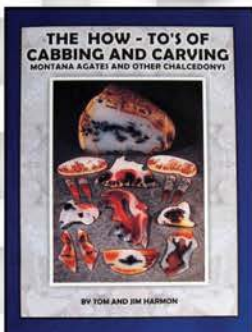
THE MONTANA AGATE MUSEUM & SALES GALLERY PRESENTS **GOD'S PAINTINGS IN STONE** *Featuring Coveted Agate & Silver Jewelry by the Harmon Family*



*And Painted Agates by
Local Artist Sami Lynn*

whitew3r3wolf.deviantart.com

www.facebook.com/whitew3r3wolfworkshop



HARMON'S AGATE & SILVER

MONTANA AGATE MUSEUM

BOTH LOCATED IN THE AGATE STOP | 10690 HWY 16 • SAVAGE, MT

Call For Open Dates Or To Make An Appointment

Tom & Cheryl Harmon: 406-798-3624 • 406-776-2373 | www.agatemontana.com • harmonsh@harmonsh.net

Montana Agate Museum

Savage, MT



Harmon's Agate & Silver, along with the Montana Agate Museum, displays the miracles of nature through these paintings in stone. Visitors and shoppers can see the glorious displays of Montana agates, purchase unique, hand crafted jewelry and local artwork.

Paintings on agate slabs and other artwork by Sami Couture as well as original artwork that depicts Clark's journey down the Yellowstone by local Savage artist Linda Conradsen, can be viewed at The Agate Stop in Savage. Visitors can purchase agates, jewelry, prints, books and many other items at the museum.

All of the Harmon's Agate & Silver products are available at the Agate Stop, 10690 Hwy 16 in Savage, MT. For more information call 406-798-2373 or visit www.agatemontana.com.



Tom Harmon amid his agate collection.

Savage Catfish Tournament

A Good Time For All

The 14th annual Savage Volunteer Fire Department Catfish Tournament will take place the weekend of June 9 & 10, 2017. There is a school organized fundraiser meal at 6pm on Friday evening followed by the Calcutta at 7pm. The tournament starts at 7am Saturday morning with a limit of 60 teams. If you would like to check out the festivities during the day on Saturday when fishermen are out you are welcome to stop by the Fire hall and visit with local fireman and community members or you can also stop down at the Elk Island fishing access where the weigh in station is located. At about 6pm Sat-

urday evening, the popular catfish feed begins at the fire hall, this is a free will donation with all the proceeds going to the fire department for much needed equipment.

This tournament is a catch and release therefore the catfish for the feed is purchased from a supplier.

The public is welcome to come to the meal and Calcutta on Friday night and the catfish feed on Saturday.



Montana Agate Hunting

By Meagan Dotson

Eastern Montana can offer some beautiful and breathtaking scenery: from rolling plains to wooded river bottoms all under an endless sky so it isn't surprising that many of the recreational activities of the area happen outdoors. Agate hunting is a pastime unique to the area and agate hunters, or rock-hounds, come from all over the country to see what they can find.

Agates are a beautiful stone unlike any other, that are formed where past volcanic activity has occurred; the silica in the lava is what eventually forms the rocks and agates in this area come into the Yellowstone River from the Big Horn, Tongue, and Powder Rivers. The Montana Moss Agate is specific to the Eastern and Central parts of the state and experts surmise that is because they have naturally moved to lower land due to the land shifting over millions of years and the natural flow of the rivers. The Montana Agate is unusual in that they can display all the qualities of every other type of agate in the world; there are approximately 200 types of agates world-wide. They are classified according to the patterns or 'pictures' that are found on the inside of the rock after it's been cut; these pictures are formed due to the inclusion of different types of minerals.

There are two to three weeks in the spring that agate hunters can start their season off with, but as the weather warms, the June rise occurs as ice melts and the rivers rise with mountain water. Water levels begin to recede about mid-July, exposing sand bars and river banks, which are optimum picking grounds. While the best picking is earlier in the season, the most comfortable time for this hobby is later in the summer and into the fall, September and October if the weather holds. Tom Harmon, owner of Harmon's Agate & Silver Shop & Museum, explains that this part of the state has a lot of flaxville gravel, which is where you're going to find agates, along with about thirty other types of rocks and so one must begin to train their eye to spot what they are looking for.

Agates have a rough outer crust that can be light or dark and have often been broken so that you can see a glimpse of what's inside. In this case, the rock can be rinsed and held up to the light; if the light comes shining through you can be sure you've found what you're looking for. Agates can develop a white crust on their exposed side if they have been exposed to the sun for long periods of time in creek beds and in summer fallow fields.

With fifty years of experience, Harmon explains that getting started as an agate hunter can be as involved as you'd like it to be. Simply starting off by walking the river bank with your eyes peeled and a bag to carry your findings



home is a great way to get started. Rock picks are handy and a good motor boat can get you to less populated areas that haven't been so picked over.

"Any place there is gravel there is a chance of finding agates," comments Harmon and adds that some good places to begin are Intake, Elk Island, Seven Sisters and access points which can be reached by boat from the MDU bridge. Permission from private land owners must be acquired prior to any agate hunting that isn't on public land.

Tumblers and saws can be purchased as individuals learn how to cut and polish the stones and agates make beautiful jewelry, wind chimes, chandeliers, and much more, many of them being quite interesting simply cut with a polished face, which is the inside of the agate. The price of agates is set by the pickers and diggers who are experienced in the field.

"Whatever you are willing to part with it for and whatever someone else is willing to pay is what it's worth," laughed Harmon who has an extensive collection of his own.

Harmon's Agate & Silver Shop & Museum is going 45 years strong and is located at 10690 Highway 16 in Savage, MT, and anyone who would like to learn more about becoming a rock-hound can find him there by calling for hours or to make an appointment. You can also visit them online at www.agatemontana.com. He has published four books about agate history, hunting, and polishing and cutting: *The River Runs North: A story of Montana Moss Agate*, *The How-To's of Cabbing and Carving: Montana Agates and Other Chalcedonys* (co-written with his son Jim Harmon), *The Many Faces of the Montana Agate*, and Harmon's newest book "The World of Dentrines In Agate". All four books are available for purchase at the shop and serve as extensive guides for those who are just getting started. The shop and museum also have what seems to be an un-ending variety of Montana Moss Agates, fashioned into wonderful works of art and available for purchase.



An antique Singer sewing machine in the Richey Museum folds into a table.

**SEE US FOR YOUR
INSURANCE NEEDS**
Multi-Peril * Crop/Hail
Stockman Insurance
Located at Stockman Bank in Richey • 773-5521

Craig's
MEAT
PROCESSING 776-2447
Savage, Montana
• custom meat processing • curing & smoking
• sausage & Jerky • wild game
Slaughter at the plant or your farm!

**LAMBERT HISTORICAL
SOCIETY & MUSEUM**
FOX LAKE SENIOR
CITIZENS CENTER
406-774-3439
Lambert, MT

**TOWN &
COUNTRY
REPAIR**
406-774-3475 • Lambert, MT

QUINNELL ELECTRIC
Chuck Quinnell • 406-776-2331
Commercial • Residential
Remodels • New Construction

Roosevelt County Events

Frontier Days June 9-11, 2017

For over four decades, Frontier Days has served up a heaping pile of western hospitality, featuring a weekend of rodeo, entertainment and a parade.

This year, the events take place June 9-11. When Culbertson plays host to the Saddle Club's Frontier Days. With the help of the Chamber of Commerce, two full days of western hospitality and fun includes rodeos in the Saddle Club's unique tiered rodeo grounds, a parade on Saturday, a barn dance, and concessions on the grounds. Contact Luke Anderson for rodeo information 406-787-5860.

Roosevelt County Fair August 9-12, 2017

Roosevelt County Fair is held in August in Culbertson. The Fair features entries from the county youth: 4-H, Scouts and area schools. Adults are also encouraged to enter their food, crafts, plants and flowers. Highlights of the fair include a 4-H and FFA livestock auction, fashion revue, Farmhand

Olympics, petting zoo, various vendors, and a fun run. The Chamber of Commerce and area businesses sponsor breakfast and a free noon meal on Friday and Saturday.

Culbertson Saddle Club Wagon Train September 2-4, 2017

For over a quarter of a century the Culbertson Saddle Club has sponsored the Labor Day Trail Ride and Wagon Train. For the real feel of the "Old West" folks bring their covered wagons or saddle horses to ride through Montana foothills imagining the working cowboy's way of life 100 years ago. The cost of the weekend includes great food, entertainment, and hay for the horses. The wagon train brings people from Montana, North & South Dakota, Idaho, California, West Virginia, Texas, Kentucky, Minnesota, and Alberta, Canada. Last year there were 21 wagons and 400 outriders, with some years up to 30 wagons.

Contact Ken Arneson for more information at 406-790-0600.

**GET A PRE-APPROVED
LOAN BEFORE YOU SHOP
FOR THAT NEW VEHICLE!**

As Low As **3.5%** At 60 Months*

Richland

FEDERAL CREDIT UNION

www.richlandfcu.com

201 West Holly St • Sidney, MT • 406-482-2704

18 East 2nd St • Culbertson • 406-787-5890

Richland Federal is a full-service Credit Union serving our member needs in Eastern Montana's Richland and Roosevelt Counties for 77 Years. 24 hour ATM at both branches



*subject to credit approval



The Culbertson Museum



A vintage wedding dress on display in the chapel exhibit.

By Joshua Smallwood

Have you wondered what it was like to step back in time to the days of the old west, when the land was really wild and pioneers braved life and limb to carve out a piece of land, where frontier doctors practiced medicine, the old schoolmarm taught her lessons in a one room schoolhouse and cowpunchers sat in front of an evening campfire, swapping stories? Come to the Culbertson Museum, where you can learn what life was like from the 1890s to the 1940s through a series of displays and artifacts that will make you feel as though you are right back there with the frontier legends.

In 2016 the museum celebrated its 25th anniversary, dedicating that time to “preserving the past for the future”. From the start of the museum, volunteers have dedicated their time in setting up rooms that display the feel of old Montana throughout the years. Inside the museum, displays depict early world living rooms and kitchens, school house, barber and beauty shops, a saloon, doctor’s office and pharmacy, while outside visitors can see inside a blacksmith’s shop, stagecoach and early world tractors.

It is a perfect trip for young people who are interested in learning a part of Montana history or for history enthusiasts in general. Open through September from 8 AM to 4 PM, the museum is located on Highway 2. There are no admission fees although donations are greatly appreciated. For more information call (406) 787-6320.

Culbertson Museum & Visitor's Information Available
Open 8am - 4pm, May 15 - September
“Preserving the past for the future.”
Free Admission
1 mile east of Culbertson on Hwy 2

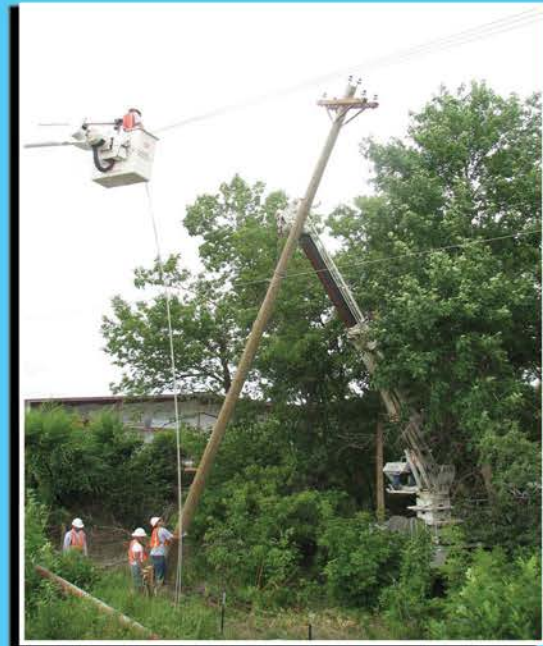
FINNICUM'S
Furniture
Fishing & Hunting Licenses
Sporting Goods • Furniture
Flooring • Appliances • And More!
122 Broadway • Culbertson
406-787-5213 | www.finnicums.com

REAs Are Part of MonDak History

Enjoy The Attractions & Activities
In Our Unique MonDak Region!



Setting a Pole Back Then



Setting a Pole Now

Your Touchstone Energy[®] Cooperative



McCone Electric Co-op Inc.
Circle, MT

Sheridan Electric
Medicine Lake, MT

McKenzie Electric Co-op Inc.
Wafford City, ND

Lower Yellowstone Rural Electric
Sidney, MT

Mountrail-Williams Electric Co-op
Williston, Stanley & NewTown, ND

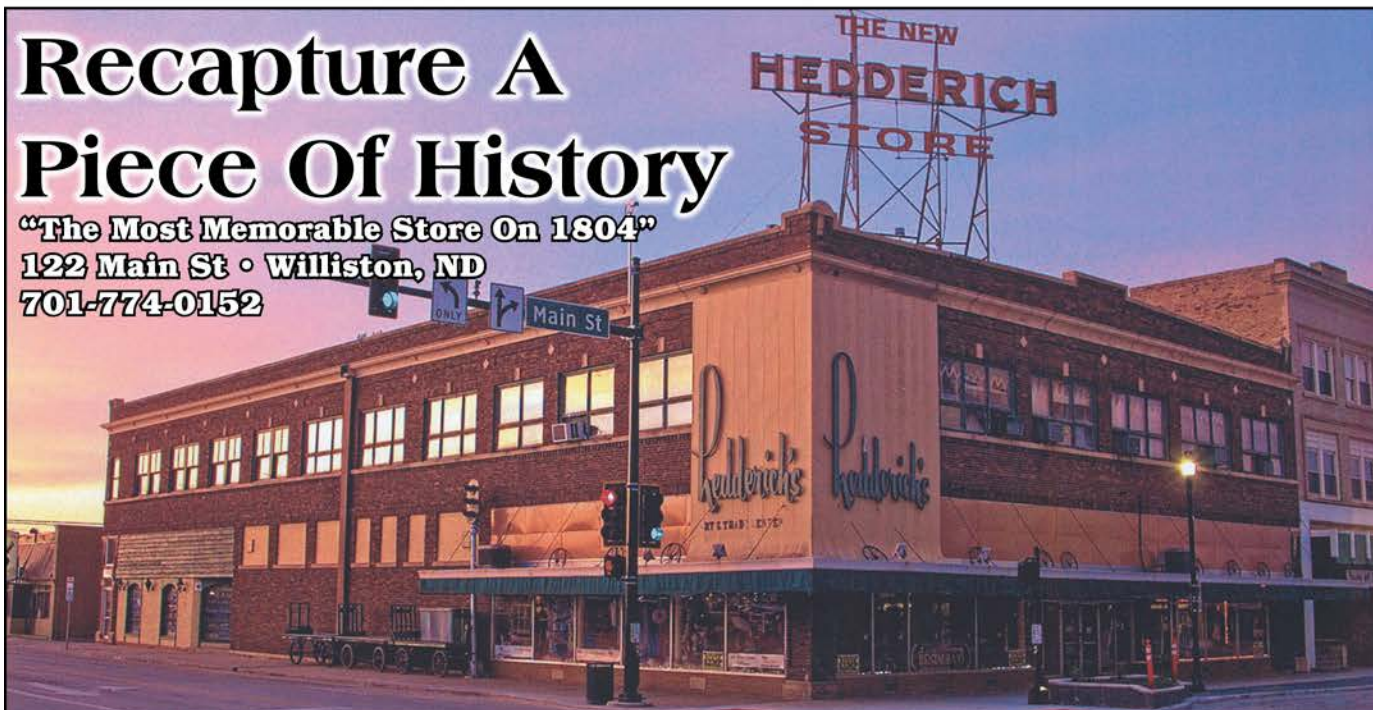
Hedderich's Museum Store

Recapture A Piece Of History

"The Most Memorable Store On 1804"

122 Main St • Williston, ND

701-774-0152



- Books • Antiques of the Plains • North Dakota Made Products • Lionel & Other Antique Trains
- Wine & Beer Making Supplies • Fantasy Collectibles & Knives • Vintage Military Clothing & Artifacts
- Reagle Beagle Gourmet Hot Dogs & Hamburgers • Old Fashioned Hand-Dipped Ice Cream

Hedderich's in downtown Williston combines the very old with the new to create a shopping experience like no other. Strolling through the store is an adventure, with museum quality pieces around every corner, mixed with unique new items for sale.

At the corner of Main Street and Second Avenue in downtown Williston, the Hedderich building was built in 1914 and served the area as a complete department store providing goods and supplies to the area's pioneers until 1980. From its closing until recently, it has housed a variety of local businesses and professional offices until owners Loye and Rose Ashton felt the need

to preserve the past while it's still present, therefore, the gradual transition to a museum store. They have a good start, but it will never be completed!

In August of 2016, the museum acquired a locally engineered and built 2/3 size replica of the iconic P-40 Warhawk, which was the bomber made famous by its deployment with Chennault's "Flying Tigers" used by the army to protect the Chinese "Burma road" from destruction by Japanese invaders of mainland China. The 26' X 26' "model" was made by flying enthusiast Morris Hayden (a captain in the civil air patrol) from plans for the original plane. The working model was powered by a General Motors all aluminum V-8 engine. The plane weighed 1,628 pounds as certified by the FAA Regional Fargo office and all official papers necessary to get a certificate of air worthiness have been carefully preserved. It was an object of interest to the public on display at Sloulin Airport in Williston for over 30 years until the family presented it to the museum for restoration and permanent display. It commands attention, being hung from the ceiling in the foyer.

Also new to the museum is a 1898 horse drawn funeral coach. This vintage bit of "Old West" history was used locally as recently as 2005 and was loaned to the museum by Everson-Coughlin Funeral Home of Williston. Inside the coach are numerous artifacts from the funerals of three of our assassinated presidents; Lincoln, McKinley and Kennedy.

The very old also includes the original 1917 IHC Fire Engine #2 from the Williston Volunteer Fire Department and a 1927 Dodge moonshine runner, complete with moll in the driver's seat, also an original from Williston. Thousands of artifacts, including



Williston, ND • 122 Main St.



household and military, keep the visitor anticipating the next view. Photo opportunities abound, but please ask before you shoot.

The Yellowstone Rock Company

Newly located in the lower level of the museum, visitors will be introduced to extreme regional history with specimens of Yellowstone agate and agatized wood with birth dates from 25,000 years to 25,000,000 years ago. Also featured with the many cut and polished stones is a complete selection of lapidary equipment and supplies for the serious hobbyist as well as related books and prospecting supplies.



Hedderich's has been a Lionel Train dealer for many years and the museum has nine operating train layouts in five different gauges, all powered by electricity from rooftop solar panels.

The "new" at Hedderich's includes the best selection of authentic Native American art and jewelry in the

region, a wide variety of purses, models of all kinds and hundreds of greeting cards for sale.

LEANIN' TREE

AN AMERICAN TRADITION SINCE 1949

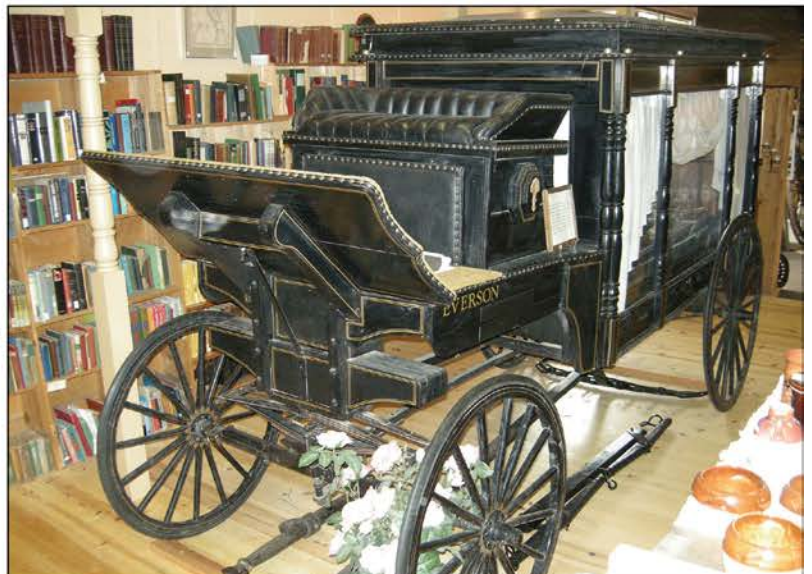
Hundreds of thousands of books line the shelves of the lower level, next to more interesting displays from the past. The store stocks beer and wine making supplies, with classes available.

Fill a flat rate USPS box with Pride of Dakota products, paired with an almanac from a particular year for

an authentic gift, or choose a variety for your own souvenir of North Dakota. Hedderich's is also the headquarters for the hottest sauces made and a huge variety of seasonings.

Begin, or end, your visit with lunch or a treat at the Regal Beagle which features mouthwatering gourmet hotdogs and hamburgers as well as old-fashioned hand dipped ice cream in 14 different flavors.

Hedderich's is located at 122 Main St., Williston, ND. They are open Wednesday through Friday from 10 am to 5:30 pm and Saturdays from 10 am to 5 pm. Call them at 701-774-0152.



Williston ARC

“Superior Parks, Facilities And Programs For All To Enjoy An Active Life”

By Tie Shank

In March 2014, the Williston Area Recreation Center (ARC) opened its new 236,117 sq. ft. facility at 822 18th St. East in Williston. The first year alone over 431,000 people took advantage of this remarkable new facility and everything it has to offer.

meeting rooms, a senior activity room, a teaching/catering kitchen, a waterpark, the wave, a surfing simulator, an instructional pool, a 50m Olympic sized pool, a golf simulator, racquetball courts, a walking track, circuit weights, cardio, free weights, a spinning room, group fitness, specialized training and personal training.

“The ARC is also expanding in programs for youth and



The new 236,117 sq. ft. Williston ARC facility



Water park

The ARC has tennis courts, a turf field, batting/pitching cages, basketball courts, track, an indoor playground, child sitting, teen lounge, birthday party rooms, a boardroom,

YOUR NEW HOME IS WAITING!

Exciting floor plans, extra features & various sizes!

On our lot or by order



Iseman Homes
YOU'RE HOME, NOW.

Mon: 9am - 7pm • Tues-Thurs: 9am - 6pm
Fri: 9am - 5:30pm • Sat: 9am - 4pm

2308 West Front St. Williston, ND | 701-572-2590

FREE DELIVERY WITHIN 100 MILE RADIUS!



Williston ARC

“Superior Parks, Facilities And Programs For All To Enjoy An Active Life”

adult enjoyment,” says Kelsie Brostuen, Marketing Coordinator for the ARC. “To list a few, we have added TRX in the Park, Fun Inclusive Teen Training, travel soccer, super hero camp, water volleyball, grass volleyball, wiffle ball, an indoor golf league, curling, and much more.”

The ARC also offers 40+ fitness classes each week!

The ARC is open from 6am-10pm Monday – Saturday and 1pm-9pm on Sundays. Guests can purchase a daily

pass or purchase a 6 month or 1 year membership. ARC offers discounted memberships for families.

Brostuen states, “We have greatly enjoyed watching people of all ages enjoy the brand new facility. Our mission statement is coming true more and more every day, “Superior parks, facilities, and programs for all to enjoy an active life.”



Basketball courts

Arnie's Motorcycle
 Kawasaki Motorcycles
 Polaris Rangers, ATVs & Snowmobiles
 503 2nd St. W., Williston, ND | 701-572-3382

MERCER COUNTY MUSEUM
 Join us in
 "Keeping History Alive"
 108 7th St. NE
 P.O. Box 1134
 Beulah, ND 58523
 (701) 873-5070

Larry Lynne Antiques
 10 West Broadway • Williston, ND 58801
 Quality antiques at affordable prices.
 A general line of furniture, glassware, pictures, etc.
 Mon-Sat: 11am - 5pm or by appointment
 701-572-3586 • 570-6003

It's All About Saying Goodbye
FULKERSON STEVENSON FUNERAL HOME
 406-488-2805
 315 Second St. NW • Sidney, MT
 ffh@fulkersons.com | www.fulkersons.com

Coca-Cola
of Williston
 Your Locally Owned & Operated
 Soft Drink Specialist | 701-572-6746

Castle Framing & Gifts
Artwork & Custom Framing
 309 Main Williston, ND 58801
 Open Mon - Sat: 9:30am - 5:30pm
 701-774-8142 | castleframing@nemont.net

Old Armory Building

Williston, ND

A true landmark in downtown Williston, the Old Armory Building is over 100 years old. Not only has it seen many exciting events, it's the only remaining building of five built just like it around North Dakota. Members of the community have donated countless hours of volunteerism as they worked to keep it alive and thriving.

Beginning its life as a home for the National Guard, Company E, it was designed by famed architect Robert Stacy-Judd of Minot. For the period of its military life it was used during World War II and the Korean War, retiring from service in 1957. In 1959, it became the Rec Center retiring from that duty in 1983 when the Raymond Family Community Center came to be. The building has been used for concerts, theater productions, weddings and other receptions and even funerals. Currently used by Entertainment Inc. and other productions, there is a state of the art sound system, installed in 2006. A 7-member board of directors, put in place by the Williston City Commission, governs the building.



Check out this large, much loved, castle like building known as The Old Armory, which resides comfortably at 320 1st Ave. E.

"Luxury For Less"

COCKTAIL LOUNGE & CASINO
FREE CONTINENTAL BREAKFAST

- 125 Units
- Ample Parking
- Jacuzzi Suite
- 24 Hr. Desk Service
- Cocktail Lounge
- Winter Plug-Ins
- Meeting Room
- 220 & 110 Volt
- Coin Operated Laundry
- Noon Check-Out
- Special Rooms
- Free Wireless Internet
- Handicap Accessible
- Fridge In Every Room
- Copy Machine

"LET US BE YOUR HOST TONIGHT"



For Reservations
Nationwide, Call:
1-800-761-4678

3801 2ND AVE. W
WILLISTON, ND
701-774-0041

Quick Professional CAR CARE



Windshields • Used Vehicles
New & Used Tires

MAGRUM
Motors
1820 2nd St. W. • Williston, ND | 701-572-0114

2017 Williston Downtowners Association Event Schedule



Crazy Days: Thursday, June 29

Summer Nights on Main: 5-9 p.m., Thursdays, June 29 to August 24

Farmers Market: 9 a.m.-noon, Saturdays, July 8 - October 14

Art & Wine Walk: 5-9 p.m., Thursday, September 21

Brewfest: 4-8 p.m., Saturday, September 30

Trail of Treats: Tuesday, October 31

Black Friday: November 24

Small Business Saturday: November 25

Holiday Stroll: Thursday, December 7

www.willistondowntown.com

Like us on Facebook: Williston Downtowners Association

Follow us on Twitter: @willistondt

Capture our Moments on Instagram: @willistondt





Believe in something better.

Specialty Care at Home

We're here when and where you need us. Our providers practice close to home so you don't need to drive far for quality care.

- Behavioral Health
- Cardiology
- Diabetes Education
- Ear, Nose & Throat
- Family Medicine Residency Clinic
- General Surgery
- Internal Medicine
- Interventional Pain Management
- Leonard P. Nelson Cancer Center
- MedQuest Home Medical
- Neurology
- OB/GYN & Midwifery Services
- Occupational Health
- Orthopedics
- Pediatric Clinic
- Plastic Surgery Clinic
- Podiatry
- Primary Care
- Rehab Services
- Sleep Lab
- Urology Clinic
- Women's Health Clinic

Call 701.572.7651 to make an appointment today.



Williston Medical Center

www.CHISTAlexiusHealth.org
Click on Williston



Buffalo Trails Museum

Epping, ND

You won't want to be in a rush when you visit the Buffalo Trails Museum located in Epping, ND. This seven-building complex features area history starting in prehistoric times and continuing through the homestead era. The museum highlights exhibits made by the first curator and founder, Elmer Halvorson. These fascinating displays include paintings, dioramas, and life-sized human figures posed in scenes from the past. Some of the favorite exhibits include a reconstructed Assiniboine village, a pioneer home scene, fossils and a diorama called an Indian Tree Burial.

Epping is also host to Buffalo Trails Day, July (8-9). A Saturday night Fireman's Dance beginning at 8 pm, July 8 (sponsored by the Epping Rural Fire District) kicks off the event, a Fireworks display will occur at dark. Sunday begins with breakfast from 8-10 am and Church services at 10:30 am. A parade will be held at 1pm. The celebration features a day full of family fun, Dark Acres Train rides, vendors, a silent auction, jumpy castle for kids and a car show. Concessions will be available by Elizabeth's Dance and Mississippi BBQ. The museum opens Saturday, June 4 and closes for the season on August 31. Hours of operation are Sat. 10 am – 4 pm and Sun. 12 – 4 pm. Admission is



One of the many works & exhibits featured at the Buffalo Trails Museum. Image courtesy of the Buffalo Trails Museum Facebook page.

\$5 per adult and \$3 per child. For more information visit their website at www.epping.govoffice.com or call 701-859-4361. Pictures and updates can also be found on the Buffalo Trails Museum Facebook page.



RITTER BROTHERS
DIAMOND CUTTERS

Downtown Williston, ND
701-572-2051 or Toll Free 800-201-2051
www.ritterbrothers.com

Hours: Mon - Friday 10 am to 6 pm
Saturday 10 am to 4 pm • Sunday Closed

Elegant by name, affordable by choice!



- Full In-House Repair Service
- Custom Design
- Watch Repair
- Diamond Jewelry

- Sterling Silver
- Color Stones
- Neckchains
- Mountings

- Wedding Bands
- In-Store Appraisals
- Knowledgeable Staff
- Friendly Atmosphere

James Memorial Art Center

Williston, ND

The former Williston city library, built in 1911, now serves the community as the James Memorial Art Center. The gallery displays monthly art exhibitions by local, regional and national artists.

Many events are held at the James. JMAC Art Fest - an outdoor festival featuring artists, vendors and entertainment - is held in the fall. Annual events include "Warm-up After Light-up" - kicking off the Christmas season with holiday decor, treats and entertainment - following the parade the day after Thanksgiving, and "Soups-on" - a luncheon featuring homemade soups and desserts.

The Center offers art classes for youth and adults in a wide selection of media throughout the year. The James also offers open studio nights every Wednesday from 5:30 pm - 8:00 pm. The studio is open to any adult who enjoys arts and crafts as a hobby or profession.

Gallery and office hours are Monday - Thursday 9 am to 2 pm, Friday 1 p.m. to 5 p.m. The gallery is open Sundays, September - April, 1 p.m. - 5 p.m., and closed Sundays May - August.

The James Memorial Art Center is listed on the National



Registry of Historic Places.

The Center is located at 621 1 Ave. W, Williston. It is handicap accessible and can be rented for private and public meetings, receptions, reunions or parties.

For more information call 701-774-3601 or visit www.thejamesmemorial.org.

While you are visiting the many unique museums in our area, check us out.



BOOKS ON BROADWAY
12½ W. Broadway, Williston, ND
701-572-1433 • Fax 701-572-9657
E-mail: bksbdwy@nemontel.net

Full-Line Bookstore

specializing in:

- Regional & Western History
- Children's Books
- Greeting Cards & Unique Gift Items
- Personal attention to Special Orders & Mail Orders

Dakota Soda & Coffee Company
Historic Soda Fountain/Coffee Bar

Mon: 10am - 7pm • Tues-Sat: 10am - 5:30pm



COOKS ON MAIN

for the everyday chef

- Cookware: Non-stick, Stainless Steel, Cast Iron or Enameled
- Bakeware
- Kitchen Gadgets
- Small Kitchen Appliances
- Textiles & Linens
- KitchenAid Stand Mixers
- Coffee • French Presses
- Coffee Makers
- Artisan Roasted Coffee from Portland Delivered Weekly!
- German & Asian Cutlery
- Wedding Registries
- Weekly Culinary Classes



NOW OFFERING CLASSES!

Open Mon - Sat: 9am - 6pm
224 Main Street • Williston, ND
701-572-COOK (2665) • (F) 701-572-2666

MonDak 4th Of July Celebrations

Arnegard 4th of July

The events will start Monday, July 3 at 9pm at the Jack Bazer Baseball Park on Ball Diamond RD, Arnegard, ND where there will be food, raffles, kids games and bouncy houses.

Games for all ages will start around 6 or 7pm, with a possibility of softball tournament, tug-of-war, or other group games.

On July 4th festivities will be traditional with a parade at 11am down Main Street and turning at 1st Street. All are welcome to join in the parade or set up along the route to view. Around noon the beef BBQ lunch will begin in Nelson Park in Arnegard and runs until the food is gone or everyone is fed. The lunch is a good-will donation and will include beef BBQ sandwiches, baked beans, pickles, ice cream, and beverages. The Arnegard Lions volunteer their time to serve the lunch and they also provide a tractor pull. The tractor pull generally starts around 2 or 3pm once the lunch has been cleaned up.

During the day there will be music and we are hoping to have a program to honor vets as well.

The fireworks will be at 11:30pm at the Baseball Park (a change from previous years where the fireworks were set off by Frontage RD in Arnegard.)

For more information go to the Booster Club Facebook page, www.facebook.com/Arnegardboosterclub.

Lambert 4th of July

Come to Lambert, MT for a 4th of July celebration to remember. The Lambert Fire Department will hold their annual fundraising BBQ, accepting freewill donations. There will be food vendors and kids' activities throughout the afternoon and at 1:30 pm the ever anticipated ping-pong ball airplane drop will happen. Kids can exchange their ping-pong balls for a can of pop, sponsored by Blue Rock and Bryan Prevost. Partakers can view special displays at the local museum, visit the Crafty Country Store, or stop by the Fox Lake Senior Center to relax and enjoy snacks and entertainment. The highlight of the event will begin at dusk when the Lambert Fire Department begins their fireworks show; the public is invited to set off their own fireworks, as well, sending Independence Day out with a bang.



Our nation's flag carried during the Arnegard 4th of July parade.



Don Pedro's Family Mexican Restaurant

Best Authentic Mexican Food In The Area!


Kids' Menu	Daily Lunch & Dinner Specials	American Food Too!
-------------------	--	---------------------------

Beer • Wine • Margaritas

Open 11am - 10pm Daily

2516 2nd Ave. W. • Williston, ND • 701-774-1151
 583 12th St. W. • Dickinson, ND • 701-483-1831

little muddy Gifts




A DISTINCT VARIETY FOR ALL YOUR GIFTING NEEDS!

4 West Broadway • Williston, ND | Mon-Sat: 10am-6pm

Lewis And Clark Trail Homesteaders Museum

Alexander, ND

Lewis and Clark opened up the west to the European explorers followed by the homesteaders who began coming to western North Dakota in the late 1800s and early 1900s. The Lewis and Clark Trail Museum, housed in the former school house which was built in 1914 in Alexander, ND offers a unique way to view the past, including the adventures of Lewis and Clark. Each classroom features a different aspect of our history, which the western North Dakota community members began creating in 1969.

Included in the displays are a country store, a Hall of

Fame with memorabilia of outstanding past residents and a reading room with historical materials. In the gymnasium, you will find a display of old restored tractors, machinery and cars. On the grounds of the museum you will find the old Boy Scout Cabin which houses old photos and maps of the area.

In recent years the museum added the Highland Lutheran Church building, which was moved in from 18 miles south of Alexander. Also on the grounds is an early day log cabin from the Madison Ranch which is south of town, completely furnished with relics of the past.

In the summer months they host a farmers market every Saturday in conjunction with hamburgers in the park. There is a car show planned for July 29. Ranger talks and music events will also take place. Check their Facebook page for updates.

The museum is open Memorial Day to Labor Day, Monday, Tuesday, Thursday, Friday & Saturday 10 am – 5 pm and Sunday 12 pm – 5 pm and is located at 102 Indiana Ave. East in Alexander, ND. Admission is free will donation. For more information call 701-828-3595 or go to www.lewisandclarktrailmuseum.com.



Your Complete
HARDWARE
Store

We've Got:

- Landscape Equipment
- BBQ Grills & Accessories
- Electrical & Plumbing

WE SPECIALIZE IN FRIENDLY SERVICE!

BADLANDS HARDWARE
701-842-3321 • 104 N Main • Watford City, ND
Mon-Fri: 8am - 7pm • Sat: 9am - 6pm • Sun: 12-5pm 

WATFORD ★ CITY ★

Your Adventure Awaits on the *New Frontier*

Muddy your bike tires on the Maah Daah Hey Trail then kick back with fine dining, cocktail bars, and rooms available at stunning new hotels.



Homefest

June 23 - June 24

A weekend filled with family, friends, food, music, activities and most of all, fun!

Arnegard's Family 4th

July 4

A real hometown celebration!

McKenzie County Fair

July 6 - July 8

Carnival, derby, rodeo and 4-H sales.

Watford Market at

McKenzie County Heritage Park

*Thursdays beginning July 21 into
September, 5-7pm*

Farmers & Crafters Market, Live Music, Food & more.

27th Annual Roughrider Rendezvous - 4 X 4 Rally

July 13 - July 16

Trails offered to suit everyone's taste.

Maah Daah Hey 100

August 5

The raddest race in the baddest place; the North Dakota Badlands.

Best of the West Ribfest

August 11

Ribs & fixings, live music and a Kid Zone.

Old Settlers Day-Alexander

August 30 - September 2

Barbecue, parade, arts & craft, dances, and a chili cook-off.

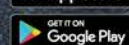
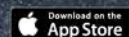
Heritage Days

September 16

Music, old-time demonstrations, food vendors and more.

VisitWatfordCity.com

Download our Visit Watford City app
and Discover the New Frontier.



McKenzie Co. Heritage Park

Watford City

Visitors can get a glimpse into life in McKenzie County during the late 1880s and early 1900s by visiting the McKenzie County Heritage Park, along Hwy 85 west of Watford City, ND.

The park is open from 10 am until 6 pm Thursday through Tuesday from Memorial Day weekend through Labor Day weekend. It is also open to groups by appointment.

The park demonstrates life on the prairie through an 1880s trapper's cabin, a homestead shack, a blacksmith shop, an early day one-room school and a typical prairie church. Newer to the park is the Ralph Koeser barn, an antique sawmill and the original Abstract & Title building from Shafer, which was built in the early 1900s. The old train depot which has been relocated to the park will eventually be fully restored to its original condition.

Also on the property is the law office of North Dakota's early governor, Gov. George F. Shafer. Shafer practiced law in the building about 1913 when it was located in Shafer, ND, which was the county seat at the time. Shafer was governor of North Dakota from 1928-1932.

The park also features a display of mammoth fossils

discovered 2 ½ miles northwest of Watford City, antique machinery and the 50 Years in the Saddle memorial that honors cowboys and their way of life.

Admission is free, but donations are accepted. Yearly and lifetime memberships are also available for \$25 and \$100 respectively.

The McKenzie County Heritage Park is also accepting volunteers to help maintain the park. For more details, please call 701-444-5804.

Heritage Park is filled with antique farm equipment and historic buildings.



EXPLORE THE HISTORY OF MCKENZIE COUNTY!

Visit Our Gift Shop And Have Some Ice Cream!



PIONEER MUSEUM

of McKenzie County

Located in the Long X Visitor Center • Watford City, ND
Mon-Sat: 10am - 6pm • Sun (Memorial Day - Labor Day): 1-5pm
FREE Admission | 701-444-2990 • museum@ruggedwest.com

Larsen Service Drug

Serving Watford City, New Town and the Surrounding Area



WE INVITE YOU TO RELAX WITH FAMILY & FRIENDS AT OUR OLD-FASHIONED SODA FOUNTAIN!

"You'll Be Glad You Stopped In"



Jewelry • Natural Health Products
Purses & Accessories North Dakota Products & Souvenirs
Home Decor • Kodak Picture Maker

244 N Main • Watford City | 701-444-2410
334 Main Street • New Town | 701-627-2410

Best of the West Ribfest

Street Fair & Car Show August 11



Main Street Watford City - A day filled with Ribs and all the Fixings, Street Vendors, Live Music, Concessions, Classic Car Show and Kid Zone Fun and Inflatables.

Be a VIP Guest!

Best Seats On The Street Under The Shade of The Tent From 4-8pm

VIP Ticket Includes: All ribs served to you under the shade of a tent, reserved seating, complimentary drinks and sides, and reserved seating at the Little Texas Concert.

10 a.m. - 8 p.m. - Street Fair

12 p.m. - 5 p.m. - Classic Car & Truck Show

12 p.m. - 8 p.m. - Jump 'n Fun inflatable Games

Free~Children must be accompanied by an adult

12 p.m. - 4 p.m. - Ping Pong Drop - Downtown businesses will be throwing out deals. Try and catch the savings!

12 p.m. to 4 p.m. - Rib Team Games

4 p.m. - Ribfest Judging

5 p.m. - RIBFEST OPENS & RIBS ARE SERVED!

**COME TRY THE UNIQUE
FLAVORS OF WATFORD CITY!**



Try Our Gourmet Sandwiches Plus Homemade Ice Cream & Sorbet



113 Main S. Watford City, ND | 701-842-3748

- Free Blood Pressure Checks
- Cowboy Up & Wildlife T-Shirts
- Western, Country & Contemporary Home Decor
- Magazines
- Best Seller Books
- Russell Stover Candy
- Prescription Service
- New Fabric Arrivals
- Souvenirs for All Ages
- Woodwick Candles
- Melissa & Doug Toys

Barrett Pharmacy & Variety

145 Main • Watford City, ND • 701-842-3311

Pioneer Museum Of McKenzie County

Watford City, ND

The Pioneer Museum of McKenzie County is a central focus of the Long X Trading Post, located on the corner of Hwy 85 South and West in Watford City. The museum is staffed from 10 am – 6 pm, Mon – Sat, year round. It is additionally open Sundays 1 pm to 5 pm from Memorial Day to Labor Day.

The museum, located on the upper and lower level of the center, has many exhibits that interpret life of the 19th and 20th century pioneers. It also displays a great history time line of McKenzie County.

Included in the displays are a homestead shack, a beauty parlor, schoolhouse, the Bannon Exhibit (the last lynching in North Dakota), Native American display, vintage clothing, pioneer quilting and sewing, religious artifacts, vintage bottles and crocks, early day store and business memorabilia, and antique furniture.

The lower levels of the museum feature exhibits on historic ranching and farming, as well as the oil exhibit room. The oil room displays photos and film footage of the first oil well in McKenzie County (the second producing oil well in North Dakota). There is a per scale drilling rig and work

over rig display relevant to today's standard of oil drilling/core samples, and a video film on the oil fracking procedure.

Another feature of the museum is the media center. The area is set aside to listen to CDs and DVDs of recorded family histories and veterans' stories. There is also a library of family and organization scrap books and history books to view.

The Pioneer Museum periodically features traveling exhibits and local exhibitors including quilting shows, art shows and photography shows.

The Pioneer Gift Shop is filled with jams, bread and soup mixes, yummy candies and Bison products, locally crafted items, books, as well as t-shirts and sweatshirts. Additionally for purchase are matted photos and photo cards of the local area, landscape and parks. A favorite activity for visitors at the gift shop is to indulge at the ice cream counter with a scoop of pure old fashioned delight!

Admission is free – admits you to life as it was in Watford City and McKenzie County. For more information contact the museum at 701-444-2990 or email at museum@ruggedwest.com.

"Friendliest Bar in Town"



- ★ Cold Beer
- ★ Darts
- ★ Pool
- ★ Pull Tabs

CITY BAR

Main St. • Watford City, ND • 701-444-4287

YOUR ONE STOP KID SHOP!



- Girls' Boutique Clothing • Melissa & Doug Toys •
- Tegu Magnetic Wooden Blocks •
- Toys & Gifts • And More! •

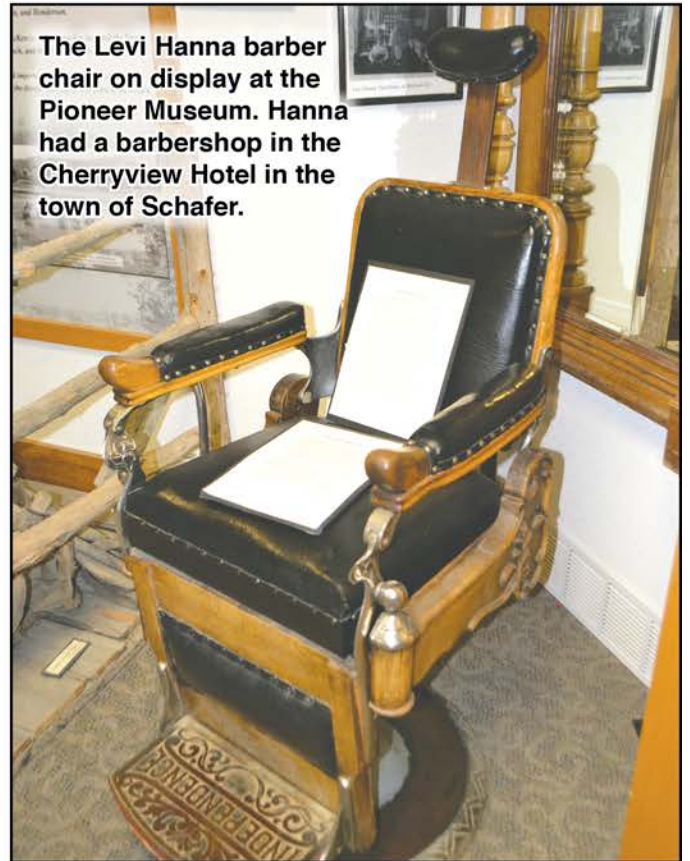


Beaver Creek Creations


228 N Main ST • Watford City, ND | 701-770-3776
www.facebook.com/beavercreekcreations



Vintage horse tack on display at Watford City's Pioneer Museum located in the Long X Visitor's Center.




The Levi Hanna barber chair on display at the Pioneer Museum. Hanna had a barbershop in the Cherryview Hotel in the town of Schafer.



CORNERSTONE BANK

Experts.
Right there
across the
table.



106 8th Ave SE, Watford City
701-444-6411

Visit www.cornerstonebanks.net for additional locations and more information.

Meyers Department Store

MDS

Something for Everyone

HOURS:
MON-FRI
10AM-6PM
SAT.
10AM-5PM

200 N MAIN ST
WATFORD CITY, ND
58854
701-444-2906

*Woman's, Men's, Junior's, Children's Clothing
Accessorie's, Shoe's & Big Name Brands!*

LIKE US ON FACEBOOK 
WWW.MEYERSDEPARTMENTSTORE.COM

 **COFFEE MAIL BOUTIQUE**

DOOR 204

*Coffee Art
Specialty
Boutique
Items
&
Gallery*

Mon.-Fri.
7:30am-6:00pm
Sat.
10:00am-5:00pm

204 N. Main St. Watford City, ND 701-842-6442

Tobacco Gardens Resort

Watford City, ND

Located near Watford City on Lake Sakakawea, Tobacco Gardens Resort offers many services year round.

With a completely rebuilt concession and restaurant, they can now serve more guests.

The resort offers their guests home cooked meals at the restaurant, while also providing picnic areas, c-store and a playground.

The resort offers 150 plus camping sites with electricity, 2 cabin rentals, modern bathrooms and shower, wireless internet, RV dumpsite and hookups with fresh water available.

For the fishing enthusiast, they also have a bait and tackle shop, a fish cleaning station and boat ramps.

Gas is available for purchase from the land and from the water.

Being open year round, they accommodate hunters, snowmobilers and other winter sports enthusiasts.

Also, the Lewis & Clark Building may be rented for family picnics or large gatherings.

"We want Tobacco Gardens to be like going to a neigh-

bor's house to visit with friends. Quiet, warm and cozy," stated owner Peggy.

Tobacco Gardens Resort is located 25 miles northeast of Watford City on Hwy 1806W. For further information or to make reservations call 701-842-4199 or 701-842-4240 or email them at tobaccogardens@ruggedwest.com.



Quiet Hours
11 PM - 7 AM

Tobacco Gardens
Resort & Marina

Overnight Campers
Check in at Concession

- Restaurant
- On/Off Sale
- Modern Restrooms
- Showers
- Fresh Water
- Cabin Rentals
- C-Store
- Bait/Tackle
- Gas
- Fish Cleaning Station
- RV Dump
- Boat Ramp



TOBACCO GARDENS RESORT & MARINA

701-842-4199 • Fax: 701-842-4240
tobaccogardens@ruggedwest.com
25 miles NE of Watford City on Hwy. 1806E



2017

Best of the West

RIBFEST

» WATFORD CITY NORTH DAKOTA «

FRIDAY, AUGUST 11, 2017

MAIN STREET - WATFORD CITY, ND

Free Concert With Three-Time Grammy Nominee "Little Texas"

Opening Act By World Class Johnny Cash Tribute Band "Church of Cash"

Do You Have The
BEST RIBS
IN THE WEST?

Enter Your Team For A
Chance To Win Prizes!
\$1,000 GRAND PRIZE

Ribs & Fixings
(Ribs Served at 5pm)

★
Street Vendors

★
**Classic Car &
Truck Show**

BE A VIP GUEST!

Best Seats On The Street Under The
Shade of The Tent From 4-8pm
VIP Ticket Includes: All ribs served to
you under the shade of a tent, reserved
seating, complimentary drinks and
sides, and reserved seating at the Little
Texas Concert.

For a complete schedule, to register a team, or purchase your VIP tickets, visit: watfordcityribfest.net or call 701-570-5084

Rough Rider Center

Watford City, ND

ROUGH RIDER
Center

**YOUR RECREATION
AND EVENTS
DESTINATION!**

- Rock Wall
- Movie Night
- Game Night
- Archery
- Power Skating
- Music & Sporting Events
- Full Aquatic Center With Waterslides
- Percs & Rec Café
- And MORE!

Check Our Website For
A Schedule Of Events

Summer Hours:

Mon-Sat: 8am - 8pm • Sun: 12-6pm

701-842-3665

2209 Wolves Den Parkway

Watford City ND

www.roughridercenter.com



By Joshua Smallwood

The Rough Rider Center in Watford City is a grand complex that is "at the intersection between heritage and growth". The complex holds a conference center, event arena, sports field, aquatic center and a hockey arena. The Rough Rider Center is open Monday through Saturday from 8 AM to 8 PM and Sunday from 12 PM to 6 PM. Membership fees are \$20 per month for adults aged 19 through 54, \$10 per month for youth and senior citizens. Daily open activity passes (including swimming) are \$7 per day for non-members.

Upcoming events include Extreme Midget Wrestling on May 26th from 7 to 9:30 PM. Tickets are \$20.00. Ringside seating is \$30.00 per ticket. The event center is looking for committees and clubs to bring more activities such as swim teams, ballroom dancing and safety classes to Watford. Exciting things to expect are open ice/pool time, agriculture and energy expos, computer and technology expos, safety expos, concerts, sporting events, pee-wee organizations and community outreach.

For more information please call (701) 842-3665.



Theodore Roosevelt Park

North Unit

View the colorful North Dakota Badlands with its sweeping vistas as one of the last remnants of wilderness in the Northern Great Plains.

Theodore Roosevelt National Park memorializes the 26th president for his enduring contributions to the conservation of our natural resources. There are 3 units of the park. The North Unit, which is located 15 miles south of Watford City, ND on US 85, is open all year long.

Visitors have a unique opportunity for wildlife viewing. In the park you will find open prairie, hardwood draws, bison, deer as well as other wildlife. The park also offers stunning views of the Little Missouri River as it runs through the park and a look into history which includes Theodore Roosevelt's life while living in North Dakota.

A visitor center offers exhibits and a film on the natural history of the park and about the park itself.


Juniper Campground is open all year and is available for tents and RVs. There are no hook-ups but a dump station is available during the summer months. Camping fees are charged all year.

Miles of hiking trails bisect the park, which offer a close



er look at the rugged badlands and the wildlife that call this home. Interpretive programs are offered most days throughout the summer and into the early fall. Please check at the visitor center for a current list.

For more information, please call the park at 701-842-2333.



TIMBER
AUTO BODY

20 YEARS OF COMBINED EXPERIENCE

**EVERYTHING
AUTO BODY**

**From Windshields & Rock Chips
To Sand Blasting & Fiberglass Work**

WE'LL DO IT ALL!

**We've also got a complete paint line & new paint booth.
Big rig or compact vehicle, bring it in! We'll work on it!**

**2004 12th St SE • Watford City, ND
PO Box 592 | 701-444-2834**

POLARIS

ARCTIC CAT
SHARE OUR PASSION™

KTM


509

OKLEY
MOTORFIST

**COLD WEATHER, WARM WEATHER,
FUN WEATHER!**

- SNOWMOBILES • ATVS
- SIDE-BY-SIDES

*Plus Full Service,
Maintenance
& Repair!*



GENERAL



TYDAK
MOTORSPORTS

701-444-3096

— 313 12th St SE • Watford City, ND (Across from the Airport) —

Maah Daah Hey Trail

The Badlands of ND

By Stephanie Ler

The 97 miles of the Maah Daah Hey trail span from the north end of the US Forest Service CCC Campground, 20 miles south of Watford City, to Sully Creek State Park, south of Medora. The trail, named for the Mandan Indian phrase, which means "an area that has or will be around for a long time", takes its visitors through the picturesque rolling prairies, jagged badlands, and winding rivers, and offers potential sightings of golden eagles, elk, and wild horses, among an array of other wildlife.

The Trail boasts eight trail segments, and ten overnight campsites, many with RV access and running water. Horseback riders, hikers and bicyclists share the trail, and trails are closed to motorized vehicles. The trail crosses the Little Missouri at the Elkhorn Crossing, and the Sully Crossing, so be prepared with weather information when visiting these segments.

Though the trails are open year-round, it is during the summer season that most rugged outdoor adventurers plan their visits. The Trails will host a number of exciting events during the 2017 season.

The first event this season, the Badlands Gravel Battle, is a bike race across up to 120 miles of the scoria-laden gravel roads throughout the Maah Daah Hey Trails. Beginning at Theodore Roosevelt National Park in Medora, participants may opt for the

Little Loop, at 44 miles, the Short Loop, at 77 miles, or the Full Loop, a full 120 miles of single-track biking through the rugged backcountry. Aid stations are available at regular intervals, and the course is fully marked. Food and drinks are available at the finish line, and an award ceremony will award top finishers and outstanding performers. Pre-registration and a small fee are required. Registration is open until May 26th with the race on Sunday, May 28.

For a full-body experience, try the first annual Bull Moose Mudder on Saturday, June 10th. This Badlands obstacle course mud run starts with a pistol shot at 1PM at the Medora Family Fun Center at the entrance to the Medora Campground. The race is a three-mile loop with three categories of participants; a shorter run just for fun, a longer run for more competition, and an endurance category, where participants complete as many competitive laps as they can in 3 hours. The course itself includes an array of challenges, from lifting, carrying, navigating natural obstacles, river crossings, hill climbing and a man-made obstacle course. There is also a Kid's Fun Run following the awards ceremony, where children of all ages are allowed to complete obstacles with parental supervision. Registration and a small fee are required for participants. Registration deadline is Friday, June 9th.

For the most extreme adventurer, try the Maah Daah Hey 100, a competitive bike race challenge that spans the full length of the Maah Daah Hey single track trail. A shot gun start is at 6AM sharp on Saturday, August 5th at the CCC Campground. Aid stations and bail-out points are available at regular intervals throughout the race, but this race is not for the faint of heart. Shorter races, ranging from 13 miles to 75 miles are also available, and participants may choose to complete the race as a relay team. Registration is open online until August 1st, and fee submission is required.

If running is your forte rather than biking, try the Maah Daah Hey Trail Run on Saturday, July 9th. The race begins at the CCC Campground and ends at the Family Fun Center in Medora. Various distances are available, ranging from a 5K to half and full marathon lengths, all the way to the full 106 miles. Aid and bail out stations are available. Registration and fees are required to be submitted by July 28th.

All registration fees for these events go to the Save the Maah Daah Hey non-profit organization to upkeep the trails. For more information about these events or to register, visit www.experienceland.org. For additional visitor information about the Maah Daah Hey Trails, visit www.mdhta.com.

Stop In For A Cold One! 
D&M's Office
701-842-6132
115 Main • Watford City, ND


LONG X LIQUOR STORE
Mon-Fri: 9am - 9pm • Sat: 10am - 9pm
Highway 85 • Watford City
(Long X Visitor's Center) | 701-444-3335

Charlie's Service
**Gas • Auto Repair
Wrecker Service**
701-586-3552
Hwy. 85 • Arnegard, ND

Now In One Building:
Meuchel
Computer Services
& Office Supplies
INTERNET CAFE
WITH ESPRESSO
& FRESH FRUIT SMOOTHIES!
701-842-4327


Movie & Tanning Salon
Discounted movies for sale
Tanning & Lotions
www.diskonnnect.com
701-842-3168
Mon-Sat: 9am - 7pm
313 N Main • Watford City, ND

Old Post Office Museum

Grassy Butte, ND



The Old Post Office Museum located in Grassy Butte, ND, was built in 1912 when construction materials were scarce. The structure, made of logs and sod, housed the Grassy Butte Post Office from 1914 to 1964. It now serves as a museum housing antiques and relics from the 1800s and early 1900s.

There is no charge for admission. The museum is open from 9 am – 4 pm on weekends through the month of June and every day from 9 am – 4 pm from July through Labor Day.

The Old Post Office Museum is located just off Hwy 85, south of the Theodore Roosevelt National Park North Unit.



The Watford Hotel
offers 77 guest
rooms & great
amenities.

**We also offer a FREE
hot breakfast & King
Whirlpool Suites!**

**Our Bar Is
OPEN TO
THE PUBLIC!**



701-842-6800 • www.TheWATFORD.COM

810 3RD AVENUE SW • WATFORD CITY, ND 58854

Outsider's

WATFORD CITY, ND

BAR & GRILL



**GREAT FOOD,
GREAT SERVICE!**

If You're Lucky, You'll Get Both
At The Same Time!

**Stop In After Working Or Playing
Full Bar & Full Menu**

Come & Check Us Out!

OPEN 7 DAYS A WEEK FROM 8AM - 1AM
905 3rd Ave SW (South of Watford Motel) • 701-842-2693

Mercer County Museum

Beulah, ND

What better place to take a walk through history than a visit to the Mercer County Historical Museum. A tour through this facility takes a visitor through the early settlement days when the Norwegian, Swedish, Irish and Germans from Russia settled into the area beginning in the 1870s.

In this 15,000 square foot facility, history buffs, genealogy enthusiasts and families looking for a relaxing afternoon of fun and entertainment, can find just what they need.

Founded in 1977, the museum contains three large rooms that take the viewer on a walk through history as they tour an old fashioned front parlor, an early day dental office, a one-room schoolhouse and an old time mercantile.

Family roots come alive in the numerous displays of early rodeo days, wedding apparel and military memorabilia beginning with World War I. Other displays include Native American artifacts and arrowheads, toys, area sports memorabilia, antique cars, tractors, wagons, other homestead items and much more.

The museum is a trip through history everyone is sure to enjoy!



Admission is free. (Free will donations accepted). Annual memberships can be purchased at any time.

The museum is open for tours Sundays from 1- 4 pm, Memorial Day through Labor Day, or by appointment at any time throughout the year by calling the toll free number (800) 441-2649 or 701-873-5070. Large or small groups are always welcome.

Your Total Convenience Center!

**Full Service Shop • Hardware • Clothing • Tires • Batteries
Gas & Diesel • C-Store Items • Ice**



Farmers Union Oil Co.

501 6th Ave SE • Watford City | Open 5am - 10pm Daily • 701-444-3639





Exceptional Care for Life

Sidney Health Center Medical Providers:

PRIMARY CARE

FAMILY MEDICINE

O. Pete Council, MD
Lisa Rosa-Ré, MD

INTERNAL MEDICINE

Rajohn Karanjai, MD
Jerome Kessler, MD

PEDIATRICIAN

George Scordalakes, MD

PRIMARY CARE

Jesse Belville, PA-C
Jacquelyn Free, FNP
Patti Iversen, FNP
Jessica Jeffries, PA-C
Bert Lepel, PA-C

SURGICAL SPECIALISTS

EAR-NOSE-THROAT

Head & Neck Surgery

Brett Bennion, MD

GENERAL SURGERY

Edward Bergin, MD
Kelly O'Neal, MD

OBSTETRICS/GYNECOLOGY

Lisa Ross, MD
Malua Tambi, MD
Wendy Wiltzen, FNP

ORTHOPEDIC SURGICAL

SERVICES

Jeffrey Gilles, MD
James Scott, MD
Janie Darby, FNP

PODIATRIC MEDICINE

Michael LaPan, DPM

CANCER CARE

RADIATION ONCOLOGY

Lyle Harrison, MD

CLINICAL SUPPORT SPECIALTIES

AUDIOLOGY & HEARING AID

Ashley Anderson, AuD

PATHOLOGY

John Andelin, MD

RADIOLOGY

Leszek Jaszczak, MD

AESTHETIC MEDICINE

Shari Twigg, MD



At Sidney Health Center, we offer a life time of services to the folks in the MonDak Region. We're a total health care facility that takes pride in knowing you and treating you throughout the various stages of life. You don't have to travel long distances for the latest in medical equipment and expert care. We have it all right here for you.

- Aesthetic Medicine
- Assisted Living
- Audiology & Hearing Aid
- Cardiopulmonary Rehab
- Cancer Care Services including:
Radiation Therapy & Medical Oncology
- Diabetes Education
- Emergency Services
- Extended Care
- Fitness Center
- Home & Community
Based Services
- Hospice
- Nutrition Education
- Obstetrics
- Personal Care Services
- Pharmacy Services
Prescription, Medical Equipment & Supplies
- Pulmonary Rehab
- Radiology Services including:
Bone Densitometry Scan, CT Scan,
Mammography, Nuclear Medicine, MRI and
Ultrasound
- Rehab Services including:
Occupational, Physical & Speech Therapy
- Respiratory Therapy
- Respite and Short Stay
Accommodations
- Sleep Center
- Surgery
- Visiting Nurse
- Volunteer Opportunities
- Walk-In Clinic
- Wound Care



Exceptional Care for Life

Visit us online:

www.sidneyhealth.org

Hospital: 488-2100

Extended Care: 488-2300

Toll Free: 1-800-331-7575

Hospital • 216 14th Avenue SW • Sidney, MT
Extended Care • 104 14th Ave NW • Sidney, MT



We Have The Best Competitive Offers Around!

Discounts Up To \$10,500*
On Select Units*

**Gem City Motors Is The Area's
Only Full-Service Dealership!**
We Offer Everything From Sales & Finance,
Service, Parts, Collision Repair, Glass Repair
& Replacement to 24-Hour Towing!



*See dealer for details
www.gemcitymotors.com



BUICK



CHEVROLET

Gem City
MOTORS



701 S. Central, Sidney | 406-433-3120 • Collision Center: 406-433-2729 • 24hr Towing: 406-480-2729